

# E-PLAN



# The Situation

- Facilities that use or handle hazardous materials must, by regulation, submit emergency response plans and hazardous materials inventories to State and Federal Agencies
- This information is virtually inaccessible to first responders
- This is unacceptable in the post 9/11 world



# The Challenge

- Provide critical facility information to emergency responders, planners, and security specialists
- Prevent unauthorized information access
- Work within existing regulatory structure



# **Workgroup Participants**

- **RRT6 Industry Work Group (IWG)**
- **States Tier II management agencies**
- **Municipal Fire Departments**
- **Emergency Response Contractors**
- **Response Planning Consultants**
- **U.S. Coast Guard**
- **U.S. DOT Office of Pipeline Safety**
- **NRT Preparedness Committee**
- **Universities – TAMUCC, UTD**



# System Specifications

## First Responders

Response critical information must be:

- **Clear and concise**
- **Consistently formatted**
- **Dependable**
- **Rapidly accessible**



# System Specifications

## Industry

- **Use existing plans and information**
- **Provide system security**
- **Allow flexible compliance options**
- **National consistency**



# **System Specifications**

## **Regulatory Agencies**

- **Facilitate regulatory reviews**
- **Interactive Tables of Contents or regulatory compliance matrices**
- **Preference for ICP format**
- **Allow submission options**
- **Integrate existing plans and systems**



# **Existing HazMat Information**

## **Primary Sources**

- Tier II
- Risk Management Plans & Databases
- Facility Response Plans / ICPs (One Plans)

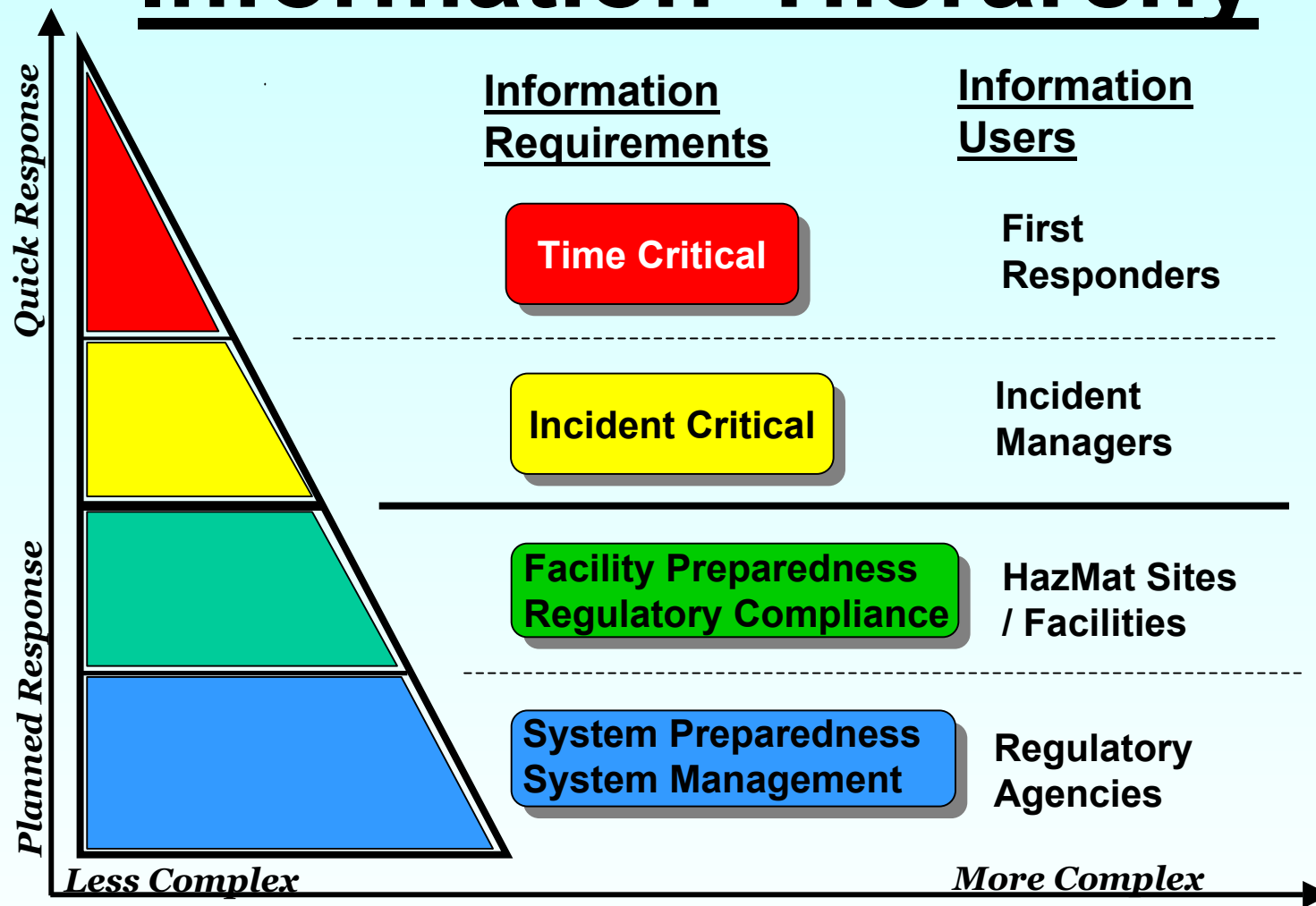
## **Additional Sources**

- DOT Emergency Response Guide
- MSDS / Chemical Profiles
- NFPA Diamond Codes
- Web Sites (eg. Cameo, Weather, USFA)
- Other (eg. Regional Plans, Pipeline Plans, etc.)



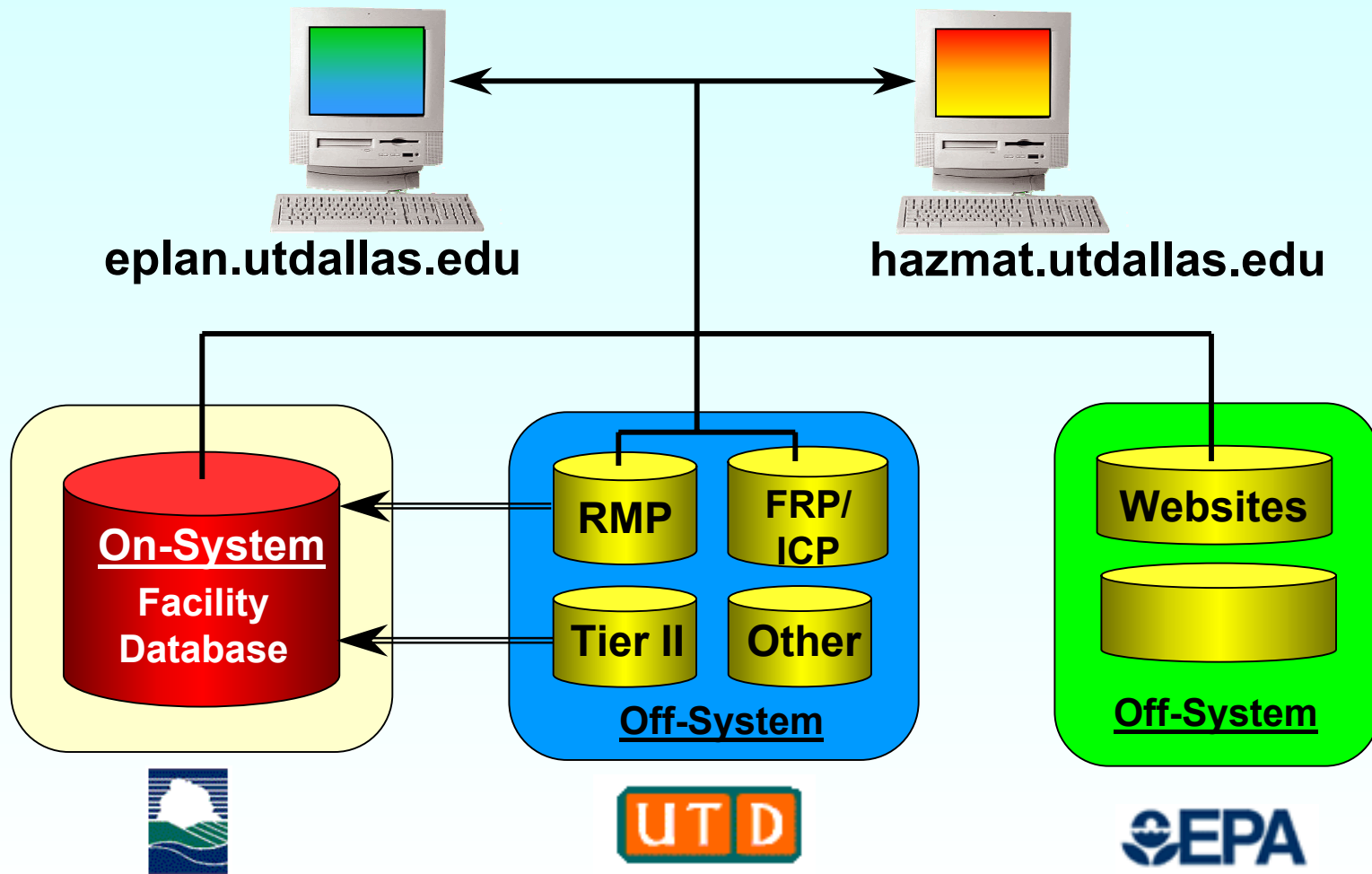


# Information Hierarchy



# E-PLAN

## Information Aggregation Sources





# Welcome To HazMat



**Disclaimer: This site is for demonstration purposes only. Information about facilities, contacts and chemicals is not real. Do not use this information for any purpose.**

## Hazardous Material Emergency Response Information

### To Perform a SEARCH:

1. Enter the full or partial **Facility Name** or **E-Plan ID** or **Address** of the Facility into the **Text Box**.
2. Click the **SUBMIT** button to display the required information.
3. Click **RESET** button to clear the Text Box.

- Home
- [Facility Search](#)
- [Contact Us](#)
- [Help](#)
  
- **Important Links :**
- [E-PLAN](#)
- [EPA Home](#)
- [Chemical Treatment](#)
- [US Fire Administration](#)
- [US National Response Team](#)
- [US EPA Region 6 Regional Response Team](#)

**HazMat** together with **E-PLAN** is a web-based system designed to simplify the procedure of filing and maintaining regulatory requirements and to provide information to emergency responders in the event of a hazardous material release.

HazMat provides general information about the Enterprise to help people handling emergencies. These people should have proper User/Password information.

This functionality is very important for Chemical and other industrial accidents, responders can find important information using Internet. This will help them coordinate faster with industry.

**Security** has been given utmost importance in the development of these systems as Enterprises will be reporting **CONFIDENTIAL** and **CRITICAL** information.

These are being developed using commonly available Internet tools and protocols. One of the key components of the E-PLAN system is the use of the Lightweight Directory Access Protocol (LDAP) as the repository for facility information. LDAP is an open-standard protocol for accessing information services. It allows information to be distributed across many systems.

Type any basic facility information: Location, Facility Name, etc...



- LOGOUT
- [Contact Us](#)
- [Help](#)
- **Important Links :**
- [E-PLAN](#)
- [EPA Home](#)
- [Chemical Treatment](#)
- [US Fire Administration](#)
- [US National Response Team](#)
- [US EPA Region 6 Regional Response Team](#)
- [US EPA Chemical Emergency Preparedness & Prevention Office](#)
- [US EPA CAMEO](#)
- [US EPA Envirofacts](#)

Click on the link to view the Particular Facility.

Facility Name	City	Phone	Zipcode
<a href="#">Honeywell International Inc., Geismar Plant</a>	Geismar	(973) 455-2000	70734
<a href="#">Honeywell International, Inc. Baton Rouge Plant</a>	Baton Rouge	(973) 455-2000	70805
<a href="#">Huntsman Corp- Aromatics &amp; Olefins</a>	Port Arthur	(409) 989-6526	77640
<a href="#">Sumitomo Sitix Silicon, Inc. Albuquerque Division</a>	Albuquerque	(505) 346-6300	87113

Identifies all facilities within scope of search, user simply selects facility.

**Emergency Contact Information (Primary)**

<b>Name</b>	CARL HUCKABY
<b>Title</b>	EMERGENCY RESPONSE SUPERVISOR
<b>Phone</b>	(281) 470-4901 (409) 723-3349
<b>24-Hr Phone</b>	(281) 470-4901 (409) 723-3349

This First Responder page details all basic Tier II information: contacts, chemical inventory, and simple facility layout. The fire diamond is a quick view of chemical properties for fire fighters. Chemical inventory links bring responders to more detailed chemical information.

**Chemical Inventory Information**

(Chemical Name)	Max. Qty.	UN/DOT#	NFPA Code & Diamond				MSDS	Profile
			H	F	R	S/N		
Flammable Gas	84,000,000 lbs.	CAS = 00-11-11	4	4	0	N	NA	NA
<a href="#">1-3-Butadiene</a>	2,100,000 lbs.	UN 1010 (CAS = 106-99-0)	2	4	2	N	<a href="#">MSDS</a>	<a href="#">Profile</a>
<a href="#">1-3-Pentadiene</a>	320,000 lbs.	UN 2461 (CAS = 504-60-9)	2	3	0	N	NA	NA
<a href="#">1-Butene</a>	460,000 lbs.	UN 1012 (CAS = 106-98-9)	1	4	0	N	<a href="#">MSDS</a>	<a href="#">Profile</a>
<a href="#">1-Pentene</a>	150,000 lbs.	UN 1108 (CAS = 109-67-1)	2	4	0	N	<a href="#">MSDS</a>	<a href="#">Profile</a>
<a href="#">Butane</a>	2,900,000 lbs.	UN 1011 (CAS = 106-97-8)	1	4	0	N	<a href="#">MSDS</a>	<a href="#">Profile</a>

- [E-PLAN](#)
- [EPA Home](#)
- [Chemical Treatment](#)
- [US Fire Administration](#)
- [US National Response](#)
- [Office](#)
- [US EPA CAMEO](#)
- [US EPA Envirofacts](#)
- [US EPA List of Hazardous Substances](#)
- [State Tier II Data](#)
- [DOT HazMat Placards](#)
- [Maps](#)
- [Weather](#)

EMERGENCY!

# GUIDE 116

## GASES - FLAMMABLE (UNSTABLE)

ERG2000

### POTENTIAL HAZARDS

#### FIRE OR EXPLOSION

- **EXTREMELY FLAMMABLE.**
- Will be easily ignited by heat, sparks or flames.
- Will form explosive mixtures with air.
- Silane will ignite spontaneously in air.
- Those substances designated with a "P" may polymerize explosively when heated or involved in a fire.
- Vapors from liquefied gas are initially heavier than air and spread along ground.
- Vapors may travel to source of ignition and flash back.
- Containers may explode when heated.
- Ruptured cylinders may rocket.

#### HEALTH

- Vapors may cause dizziness or asphyxiation without warning.
- Some may be toxic if inhaled at high concentrations.
- Contact with gas or liquefied gas may cause burns, severe injury and/or frostbite.
- Fire may produce irritating and/or toxic gases.

### PUBLIC SAFETY

- **CALL Emergency Response Telephone Number on Shipping Paper first. If Shipping Paper not available or no answer, refer to appropriate telephone number listed on the inside back cover.**
- Isolate spill or leak area immediately for at least 100 meters (330 feet) in all directions.
- Keep unauthorized personnel away.
- Stay upwind.

Many gases are heavier than air and will spread along ground and collect in low or confined

North American Emergency Response Guide is the standard guide used by all first responders in North America. MSDS sheets provide specifics about chemical properties from the actual manufacturer.

## MATERIAL SAFETY DATA SHEET

### SECTION 1 CHEMICAL PRODUCT AND COMPANY IDENTIFICATION

MATHESON TRI-GAS, INC.  
959 ROUTE 46 EAST  
PARSIPPANY, NEW JERSEY USA 07054-0624 OR  
530 WATSON STREET  
WHITBY, ONTARIO, CANADA L1N 5R9

EMERGENCY CONTACT:  
CHEMTREC 1-800-424-9300

INFORMATION CONTACT:  
(USA) 973-257-1100  
(WHITBY) 905-668-3570  
(EDMONTON) 780-471-4036

#### SUBSTANCE: 1-BUTENE

#### TRADE NAMES/SYNONYMS:

MTG MSDS 12; ALPHA-BUTYLENE; ETHYLETHYLENE; BUTYLENE; ALPHA-BUTENE; BUTENE-1; N-BUTENE; N-BUTYLENE; 1-BUTYLENE; UN 1012; C4H8; MAT25870

CHEMICAL FAMILY: hydrocarbons, aliphatic

CREATION DATE: Jan 24 1989

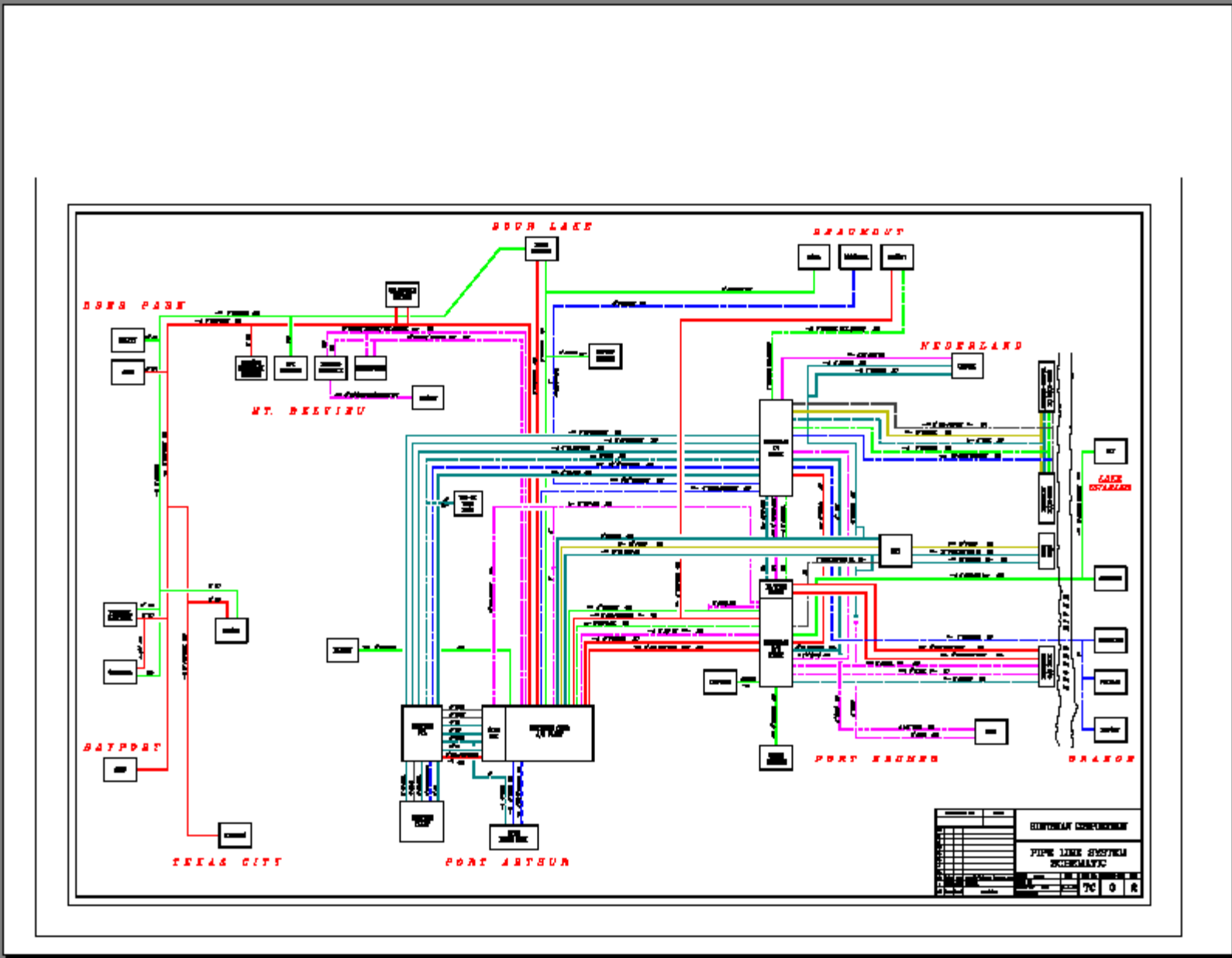
REVISION DATE: Mar 22 2001

### SECTION 2 COMPOSITION, INFORMATION ON INGREDIENTS

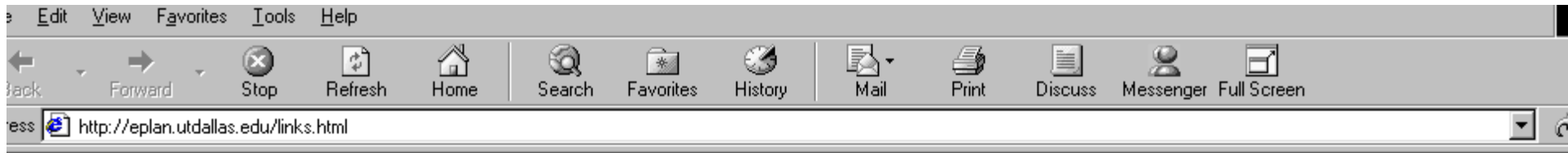
#### COMPONENT 1-BUTENE

E-plan also allows simple to complex facility diagrams to assist responders in size up during ER operations.

EMERGENCY!







### Important Links:

- [E-PLAN](#)
- [EPA Home](#)
- [Chemical Treatment](#)
- [US Fire Administration](#)
- [US National Response Team](#)
- [US EPA Region 6 Regional Response Team](#)
- [US EPA Chemical Emergency Preparedness & Prevention Office](#)
- [US EPA CAMEO](#)
- [US EPA Envirofacts](#)
- [US EPA List of Hazardous Substances](#)
- [State Tier II Data](#)
- [Maps](#)
- [Weather](#)

E-Plan continues to work with local fire departments to develop links vital to first responders and state agencies involved in emergency response operations.

# Project Progress

- **Project Initiated November 2000 at UTD with EPA/TNRCC Grant**
- **Development Team Assembled**
- **Concept Proven & Successful**
- **Designed & Developed a Working Prototype System**
- **Pilot Projects (Beta Sites) UNDERWAY**

