

Planning and Prevention Through Partnership

Western Lake Erie Area Contingency Plan Coastal/Inland

September 1998



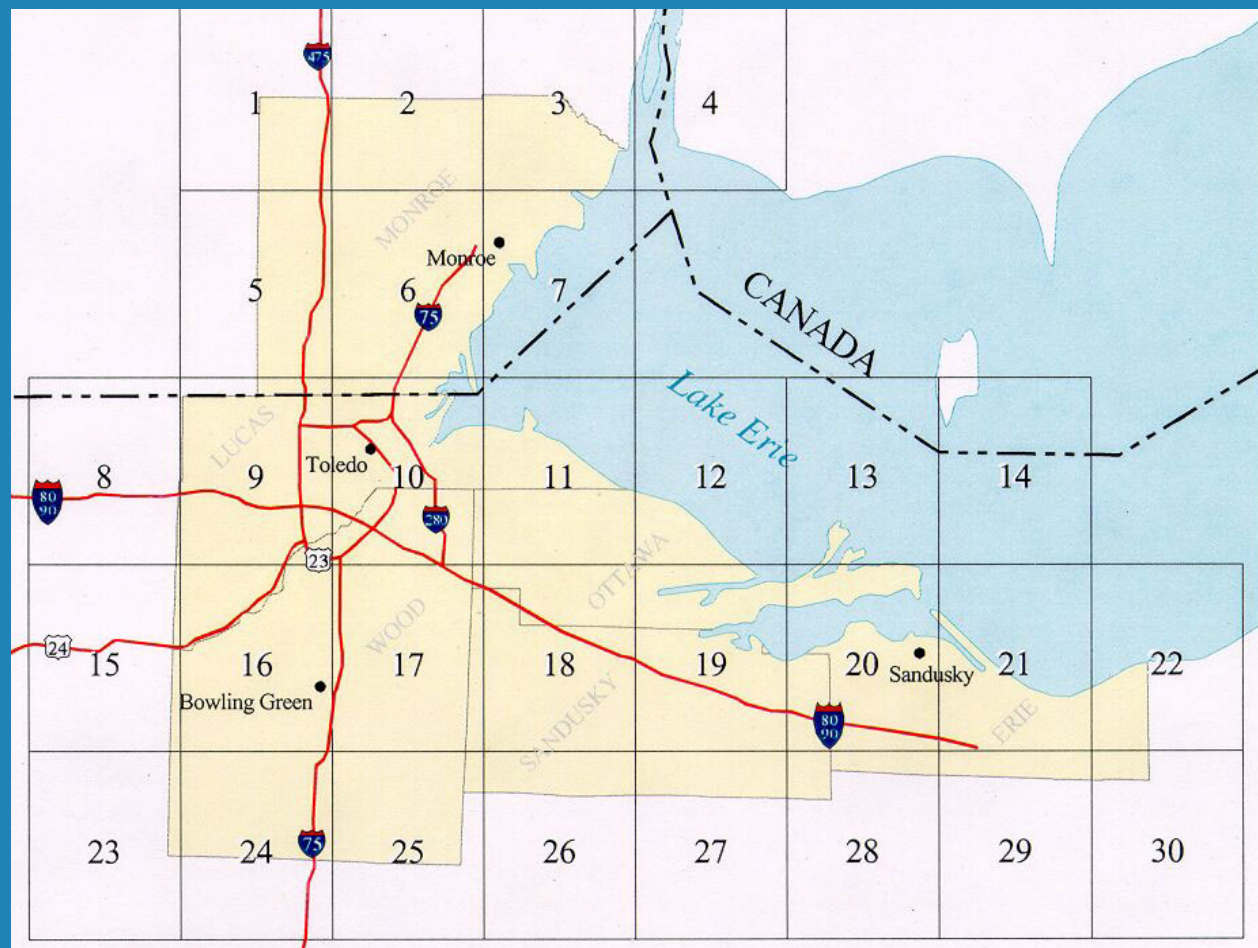
Lucas, Ottawa, Erie, Sandusky, and Wood
Counties, Ohio and Monroe County, Michigan

Western Lake Erie Area Committee

Area Planning Requirements

- Ω **(40 CFR 300) National Contingency Plan amended by the Clean Water Act and OPA 90 require Area Contingency Planning**
- Ω **Federal/State/Local On-Scene Coordinators and Stakeholders to develop an Area Contingency Plan to respond to oil & Hazmant**

WLE ACP Coverage Area



Old WLE Area Contingency Plan

- Ω Broken down by COTP zone/EPA zone**
- Ω Counties divided-multiple Federal ACP's**
- Ω Sensitive areas divided (environmental, economical, etc)**
- Ω Nearby (but out of zone) resources not included in ACP's-LEPC's left out of loop**
- Ω Redundant meeting requirements**

“One County-In” Plan

- Ω **Includes county LEPC planning/personnel**
- Ω **Better coverage of connected ecosystems for response**
- Ω **Large area covered-one county, one plan**
- Ω **“All” stake-holders meet to coordinate planning issues at the same meeting**
- Ω **Pooled resources with common goals**

Private Source Spill



Commercial Source



Commercial Spill Source



Commercial Source



Mystery Spills



Maumee River Mystery Spill

- Ω 1 in 500-year rain storms led to extreme flooding in Toledo metropolitan area the week of 30 July – 03 August 2000.
- Ω A heavy sheen was discovered in the Maumee River the morning of 03 August—the day before the “Toledo Rib-Off”
- Ω Multiple agencies responding

Maumee River Mystery Spill

0007-48-2900 Wayne/Moore properties

OSC Gerber 08/03 925 hours

Oil sheenn upst. of Tug Karen Andrie dnst. of CSO in Maumee River. (photos from deck of barge)



Maumee River Mystery Spill

0007-48-2900 Wayne/Moore properties

OSC Gerber 08/03 925 hours

Oil sheenn upst. of Tug Karen Andrie dnst. of CSO in Maumee River. (photos from deck of barge)



Maumee River Mystery Spill



Maumee River Mystery Spill

0007-48-2900 Wayne/Moore properties
OSC Gerber 08/03 951 hours
Oil collecting along bank in International Park.



Maumee River Mystery Spill

∩ Numerous agencies responded:

∩ MSO Toledo

Station Toledo

∩ OEPA

TMAA

∩ US EPA

Toledo Fire

∩ Toledo PD

∩ Toledo Environmental Services

Maumee River Mystery Spill



Maumee River Mystery Spill

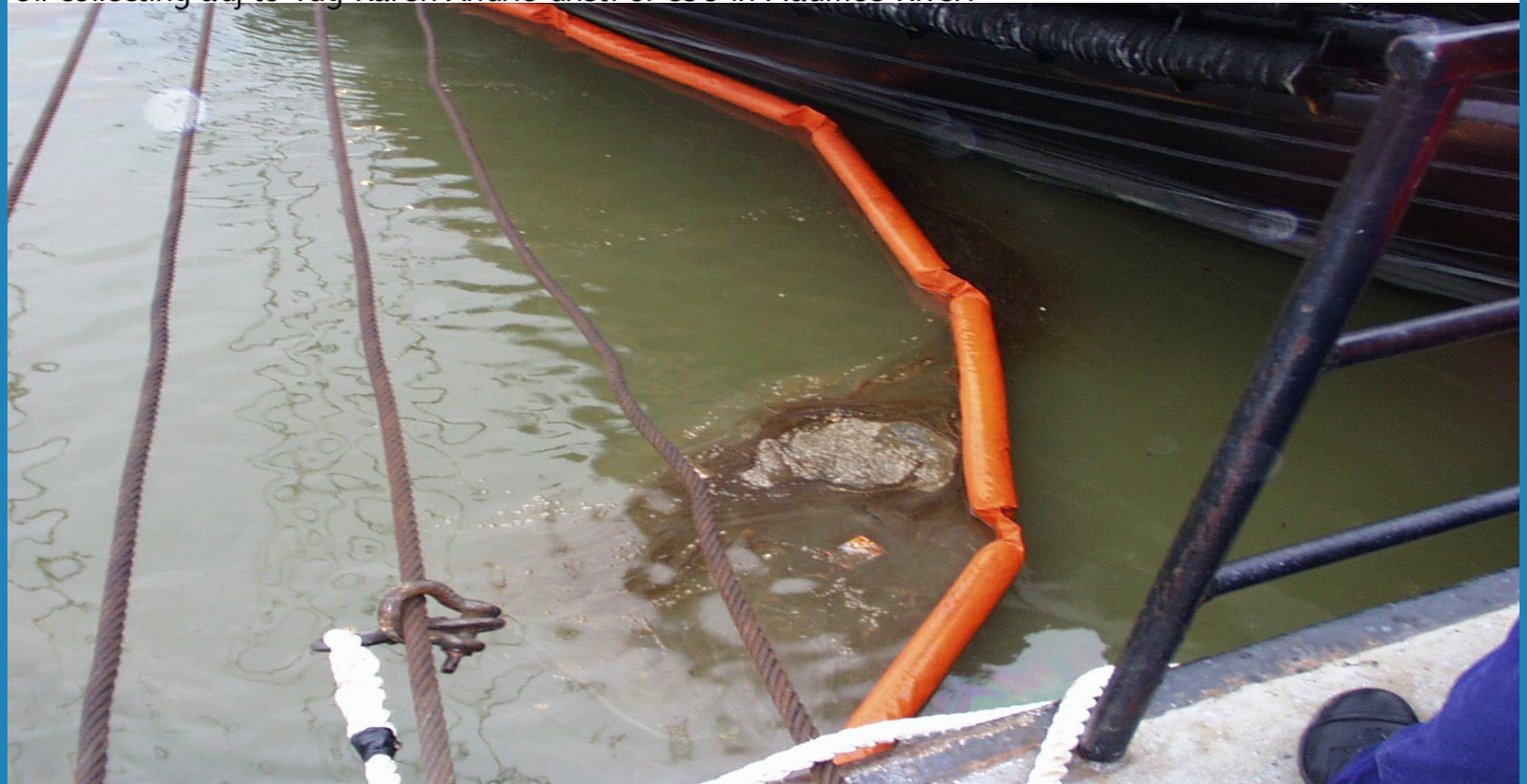


Maumee River Mystery Spill

0007-48-2900 Wayne/Moore properties

OSC Gerber 08/03 925 hours

Oil collecting adj to Tug Karen Andrie dnst. of CSO in Maumee River.



OEPA/TES Investigations

- Ω Report of an unrelated incident on the west edge of Downtown.**
- Ω Samples taken from river and compared to historical samples taken from property.**
- Ω Reevaluated the possibility of a CSO in the area of spill in river.**
- Ω Original RP's no longer responsible.**
- Ω New investigation opened.**

Maumee River Mystery Spill

0007-48-2900 Wayne/Moore properties

OSC Gerber 07/31 1651 hours

Black oil in combined sewer catch basin in alley betwn Wayne & Moore property.



Maumee River Mystery Spill

0007-48-2900 Wayne/Moore properties

OSC Gerber 08/01 904 hours

Contaminated vegetation removal from Wayne Const. property north side of alley.



Maumee River Mystery Spill

0007-48-2900 Wayne/Moore properties

OJC Gerber 07/31 1633 hours

Black oil staining in loading dock area of Wayne property. Note water level mark after flooding.



Maumee River Mystery Spill

0007-48-2900 Wayne/Moore properties

OJC Gerber 07/31 1737 hours

Oil staining at the base of Moore's north side over head door.



Maumee River Mystery Spill

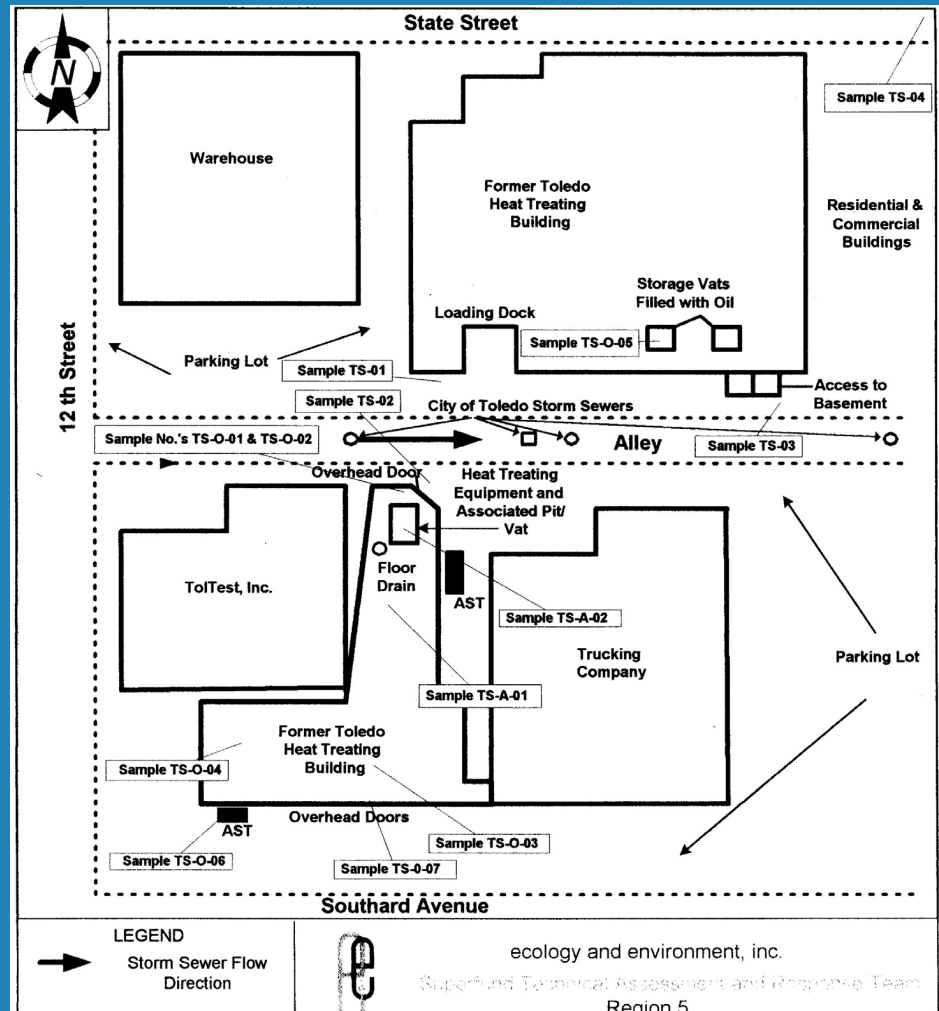
0007-48-2900 Wayne/Moore properties
OSC Gerber 07/31 1633 hours
Black oil in loading dock area of Wayne property.



U.S.EPA RESPONSE MEASURES

- Ω **U.S. EPA mobilizes an OSC, the START technical team and ERRS clean-up contractors**
- Ω **Stabilize the site**
- Ω **Containment of the source**
- Ω **Disposal of the waste**

Maumee River Mystery Spill



Maumee River Mystery Spill



Maumee River Mystery Spill



Maumee River Mystery Spill



Maumee River Mystery Spill



Maumee River Mystery Spill



Maumee River Mystery Spill



Maumee River Mystery Spill



Maumee River Mystery Spill

- Ω **USEPA/OEPA/TES conducted oversight of immediate removal of pooled material in both RP facilities.**
- Ω **First laboratory results indicated the potential for PCB containing material (follow-up results provided no PCB's).**

Lessons Learned

- ② **Unified Command concept worked extremely well for responding agencies**
- ② **Toledo Mutual Assistance Association can timely & very effectively respond**
- ② **Agencies close communication allowed for quick response, accurate sampling, identifying the source and removal of product, resulting in very favorable press coverage**

Importance of NPREP 2000

- Ω **First multi-agency response exercise in 3 years**
- Ω **First multi-area spill response in Lake Erie**
- Ω **Studying how to decrease impact to wildlife**
- Ω **Focus public attention to the importance of the Great Lakes and Western Lake Erie in particular**

Toledo Scenario

- Ω **Damaged barge spills 5,000 gallons of bunker oil into the Maumee River while entering Toledo Shipyard**
- Ω **MSO Toledo conducts notifications and activates it's Command Center**
- Ω **TMAA is notified and activated**
- Ω **Local USCG assets activated**
- Ω **Real-time scenario from zero-hour**

Toledo Response Players

- Ω **USCG MSO Toledo**
- Ω **Toledo Mutual Aide Association**
- Ω **NOAA SSC**
- Ω **USCG Atlantic Strike Team**
- Ω **U.S. EPA**
- Ω **City of Toledo Office of Environmental Services**
- Ω **OH EPA**
- Ω **US Navy Great Lakes Tracen**

TOLEDO MUTUAL AID ASSOCIATION



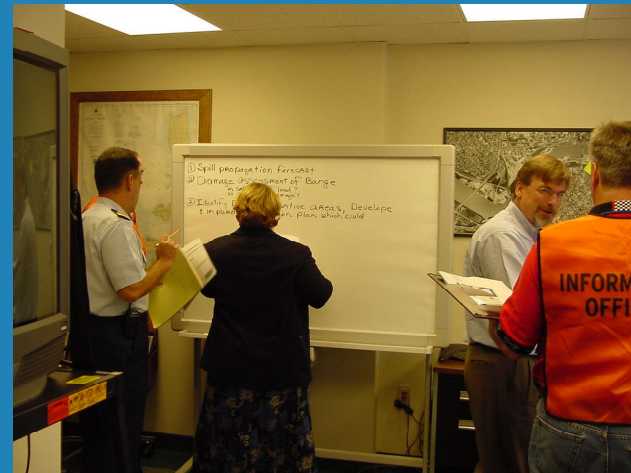
USCG VOSS SYSTEM



USCG STATION TOLEDO



TOLEDO UNIFIED COMMAND



TOLEDO ICS PLANNING MEETINGS

