



U.S. Department
of Transportation

Federal Aviation
Administration

Advisory Circular

Subject: AIRFIELD PAVEMENT SURFACE
EVALUATION AND RATING MANUALS

Date: 7/12/04
Initiated by: AAS-100

AC No: 150/5320-17
Change:

1. PURPOSE. This Advisory Circular (AC) provides guidance on understanding and rating the surface condition of flexible and rigid airfield pavements. It describes types and causes of distress and provides a simple system to visually rate pavement condition on a scale ranging from excellent to failed.

2. BACKGROUND. The Federal Aviation Administration (FAA) evaluated options for improving the quality of information available to the Agency on airfield pavement conditions in response to Section 160 of the Wendall H. Ford Aviation Investment and Reform Act for the 21st Century (P.L. 106-181). The evaluation resulted in selecting an existing inexpensive pavement condition rating system to adapt for use on airfield pavements. The rating system is modeled after the University of Wisconsin's Pavement Surface Evaluation and Rating System (PASER). The rating system is meant as a source of information for rating pavements under the airport safety data program. The manuals will also assist airport managers in understanding the surface condition of airfield pavements.

These manuals were produced for the FAA by Engineering Professional Development, College of Engineering, University of Wisconsin-Madison.

3. APPLICATION. The FAA recommends the information and procedures contained in the manuals for use by airport staff and consultants directly or in combination with additional testing and data collection in a more comprehensive pavement maintenance management system.

DAVID L. BENNETT
Director, Office of Airport Safety and Standards

The information in this AC is not intended to decide the need or timeliness for pavement rehabilitation projects. These decisions should be determined as a result of more technical investigations that may include a detailed pavement condition index (PCI) study.

The manuals will help provide a degree of uniformity to field observations made by individuals collecting data for the Airport Master Record (FAA Form 5010). The data element description for Surface Type/Condition (Data Element 33 of the National Airspace System Resources database) has been revised to incorporate information from this AC.

The manual for asphalt airfield pavements is included in this AC as Appendix 1. The manual for concrete airfield pavements is included as Appendix 2.

4. RELATED READING MATERIAL. AC 150/5380-6, *Guidelines and Procedures for Maintenance of Airport Pavements*, and AC 150/5380-8, *Handbook for Identification of Alkali-Silica Reactivity in Airfield Pavements* provide additional guidance and technical information for identifying distresses in airfield pavements.

5. ONLINE AVAILABILITY. To view and download this AC, visit the FAA Web site at <http://www.faa.gov/arp/150acs.cfm>.

**APPENDIX 1--ASPHALT AIRFIELD PAVEMENT
SURFACE EVALUATION AND RATING MANUAL**

Pavement Surface Evaluation and Rating

PASER

Asphalt Airfield Pavements

Manual



RATING
5



RATING
3



RATING
1



Contents

Introduction	2
Evaluating pavement condition	3
Surface defects	4
Surface deformation	5
Cracks	7
Patches and potholes	12
Rating pavement surface condition	14
Rating system	14
Rating 5 — Excellent	15
Rating 4 — Good	16
Rating 3 — Fair	18
Rating 2 — Poor	20
Rating 1 — Failed	22
Practical advice on rating airfield pavements	23
Airfield Pavement Inventory	<i>inside back cover</i>

This manual is intended to assist airfield managers in understanding and rating the surface condition of asphalt pavement. It describes types and causes of defects and provides a simple system to visually rate pavement condition.

Produced for the Federal Aviation Administration by
Engineering Professional Development, College of Engineering,
University of Wisconsin-Madison.

Pavement Surface Evaluation and Rating

PASER Asphalt Airfield Pavements Manual

Donald Walker, P.E., University of Wisconsin–Madison, *author*

Lynn Entine, Entine & Associates, *editor*

Susan Kummer, Artifax, *designer*



PASER — Pavement Surface Evaluation and Rating

Asphalt Airfield Pavements

An airport manager's goal is to use available funds to provide a safe and economical pavement surface—no simple task. It requires balancing priorities and making difficult decisions in order to manage pavements. General aviation airfield pavements are often managed informally, based on the staff's judgment and experience. While this process is both important and functional, using a slightly more formalized technique can make it easier to manage pavements effectively.

Experience has shown that there are three especially useful steps in managing pavements:

- 1) Inventory all pavements.
- 2) Periodically evaluate the condition of all pavements.
- 3) Use the condition evaluations to set priorities for projects and evaluate alternative treatments.

A comprehensive pavement management system involves collecting data and assessing several pavement characteristics: roughness, surface distress (condition), surface skid characteristics, drainage, and structure (pavement strength and deflection). Planners can combine this condition data with economic analysis, to develop short-range and long-range plans for a variety of budget levels. However, general aviation agencies may lack the resources for such a full-scale system.

Since surface condition is the most vital element in any pavement management system, managers may use the simplified rating system presented in this manual on asphalt airfield pavements to evaluate their asphalt pavements. A PASER manual for concrete airfield pavements is also available (see references, page 24).

Evaluating pavement condition

PASER uses visual inspection to evaluate pavement surface conditions. The key to a useful evaluation is identifying different types of pavement distress and linking them to a cause. Understanding the cause for current conditions is important in selecting an appropriate maintenance or rehabilitation technique.

There are four major categories of common asphalt pavement surface distress:

Surface defects

Raveling, flushing, polishing.

Surface deformation

Rutting, distortion — rippling and shoving, settling, frost heave.

Cracks

Thermal, reflection, slippage, joint/edge, block, and alligator cracks.

Patches and potholes

Deterioration has two general causes: environmental due to weathering and aging, and structural caused by repeated traffic loadings.

Obviously, most pavement deterioration results from both environmental and structural causes. However, it is important to try to distinguish between the two in order to select the most effective rehabilitation techniques.

The rate at which pavement deteriorates depends on its environment, traffic loading conditions, original construction quality, and interim maintenance procedures. Poor quality materials or poor construction procedures can significantly reduce the life of a pavement. As a result, two pavements constructed at the same time may have significantly different lives, or certain portions of a pavement may deteriorate more rapidly than others. On the other hand, timely and effective maintenance can extend a pavement's life. Crack sealing and surface treatments (such as slurry seal) can reduce the effect of moisture in aging of asphalt pavement.

With all of these variables, it is easy to see why pavements deteriorate at various rates and why we find them in various stages of disrepair. Recognizing defects and understanding their causes helps us rate pavement condition and select cost-effective repairs. The pavement defects shown on the following pages provide a background for this process.

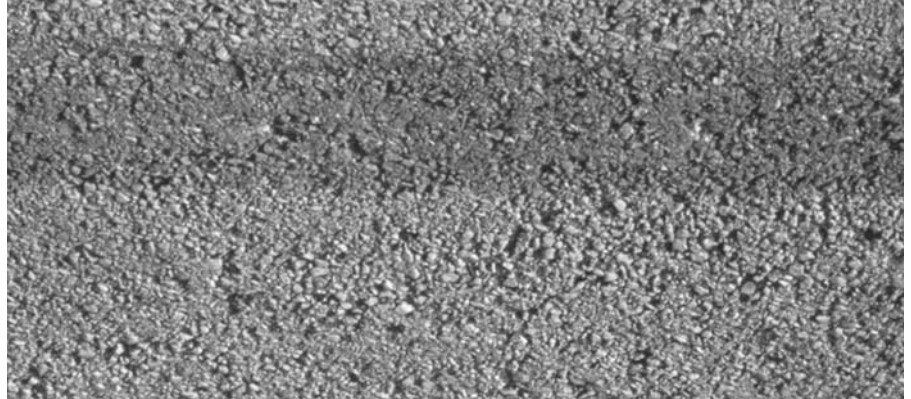
Periodic inspection is necessary to provide current and useful evaluation data. It is recommended that PASER ratings be updated every year.

4 EVALUATION — Surface Defects

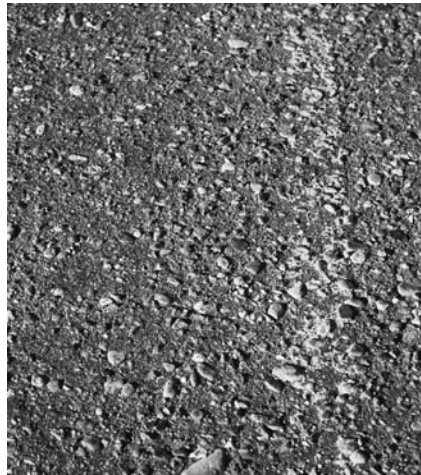
SURFACE DEFECTS

Raveling

Raveling is progressive loss of pavement material from the surface downward, caused by: stripping of the bituminous film from the aggregate, asphalt hardening due to aging, poor compaction especially in cold weather construction, or insufficient asphalt content. Slight to moderate raveling has loss of fines. Severe raveling has loss of coarse aggregate. Debris from raveling may damage aircraft. Protect pavement surfaces from the environment with a surface treatment or an overlay if additional strength is required.



▲ Slight raveling. Small aggregate particles have worn away exposing tops of large aggregate.



◀ Moderate to severe raveling. Erosion further exposes large aggregate.

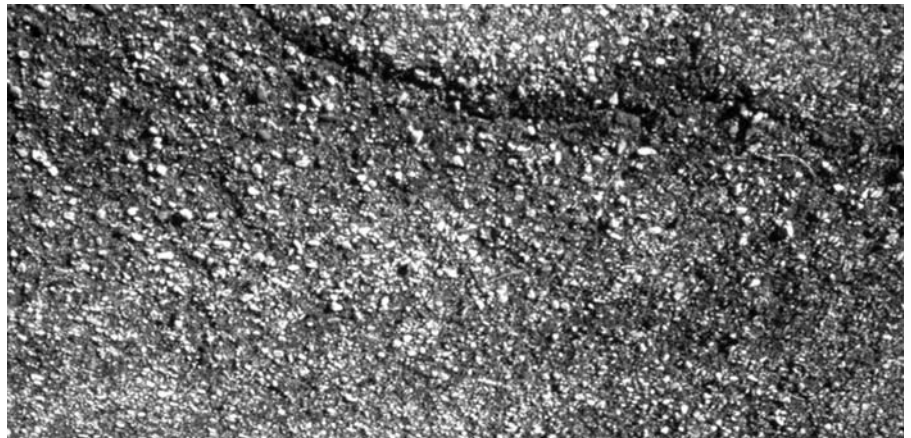
▼ Severe raveling and loss of surface material.

Polishing

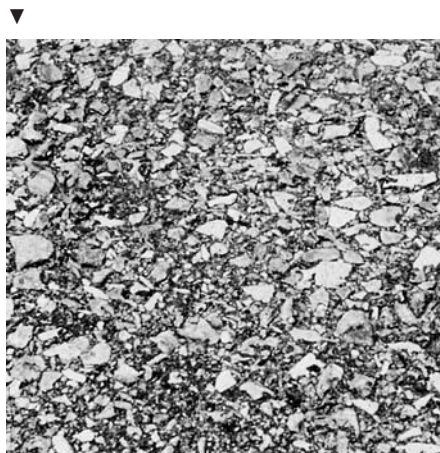
Polishing is a smooth slippery surface caused by traffic wearing off sharp edges of aggregates. Pavement grooves may also be worn away. Repair with surface treatment or thin bituminous overlay using skid-resistant aggregate.

Flushing

Flushing is excess asphalt on the surface caused by a poor initial asphalt mix design or by paving or sealcoating over a flushed surface. Repair by overlaying with properly designed asphalt mix or sealcoat.



Polished, worn aggregate needs repair.



◀ Flushing. Dark patches show where asphalt has worked to surface.

SURFACE DEFORMATION

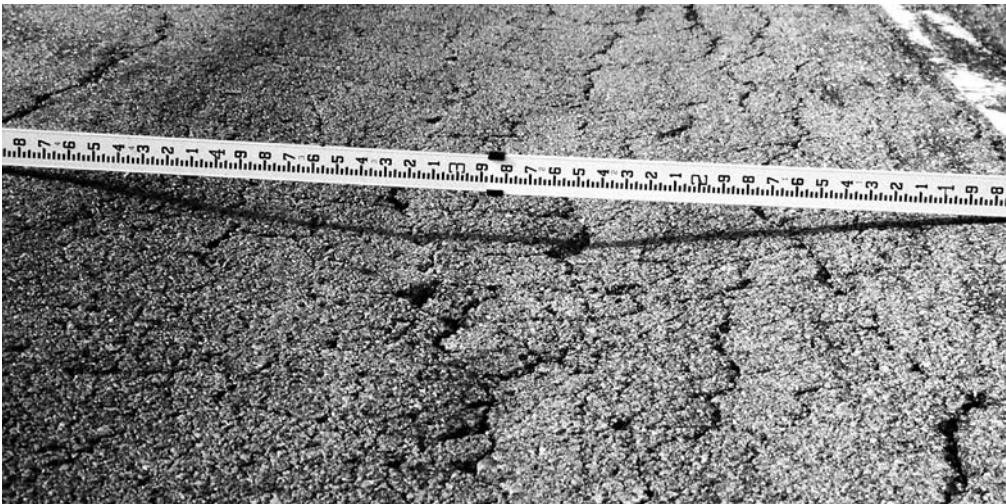
Rutting

Rutting is displacement of material, creating channels in wheelpaths. It is caused by traffic compaction or displacement of unstable material. Severe rutting (over 2") may be caused by base or subgrade consolidation. Repair minor rutting with microsurfacing or overlays. Severe rutting requires milling the old surface or reconstructing the pavement before resurfacing. Base or subgrade improvement may be necessary if rutting is related to poor base or subgrade conditions.



▲ Even slight rutting is evident after a rain.

◀ Severe rutting over 2" caused by poor mix design.



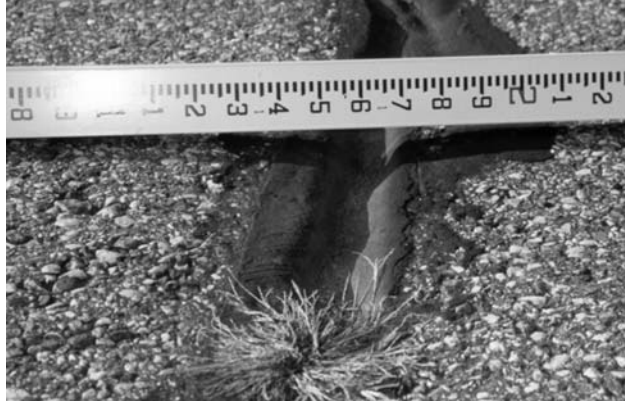
◀ Severe rutting caused by poor base or subgrade.

6 EVALUATION — Surface Deformation

Distortion

Shoving or rippling is the displacement of surfacing material. It can develop when the asphalt mixture is unstable because of poor quality aggregate or improper mix design. Repair by milling smooth and overlaying with stable asphalt mix.

Other pavement distortions may be caused by settling, frost heave, etc. Patching may provide temporary repair. Permanent correction involves removal of unsuitable subgrade material and reconstruction.



◀ Minor settlement over sealed crack.

Heavy traffic has shoved pavement into washboard ripples and bumps.



Significant settlement (over 2") and cracking adjacent to sealed crack.



▲ Severe settling from utility trench.



▲ Frost heave damage from spring break-up.

◀ Severe settlement of patch.

CRACKS

Thermal cracks

Thermal cracks are often regularly spaced. The cause is movement due to temperature changes and hardening of the asphalt with aging.

Thermal cracks will initially be widely spaced (several hundred feet apart). Additional cracking will occur with aging until they are closely spaced (within several feet). These usually begin as hairline or very narrow cracks; with aging they widen. If not properly sealed and maintained, secondary or multiple cracks develop parallel to the initial crack. The crack edges can further deteriorate by raveling and eroding the adjacent pavement.

Help prevent water intrusion and damage by sealing cracks as soon as they appear. Routing and cleaning the crack will improve the performance of crack sealant.

Differential thermal stress can also cause cracking. Pavement marking paint and sealcoats using materials with significantly different thermal



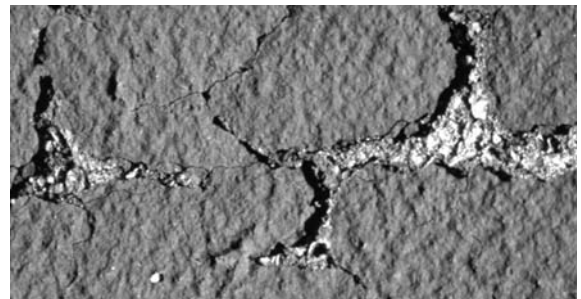
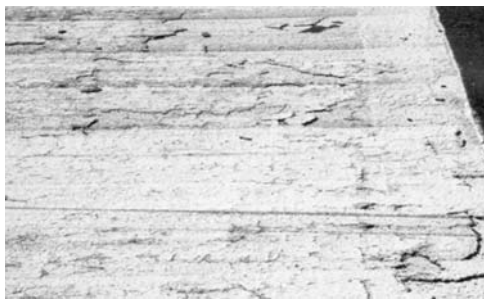
▲ Widely spaced, well-sealed cracks.

▲ Sealed cracks, some closely spaced.

◀ Failed sealant.

Pavement marking may cause thermal stress and lead to surface cracking.

Severe thermal cracking in coal tar sealant.



▲ Tight cracks less than 1/4" in width.



▲ Open crack – 1/2" or more in width.



▲ Water enters unsealed cracks softening pavement and causing secondary cracks.



▲ Pavement ravel and erodes along open cracks causing deterioration.

8 EVALUATION — Cracks

properties can create surface cracking.

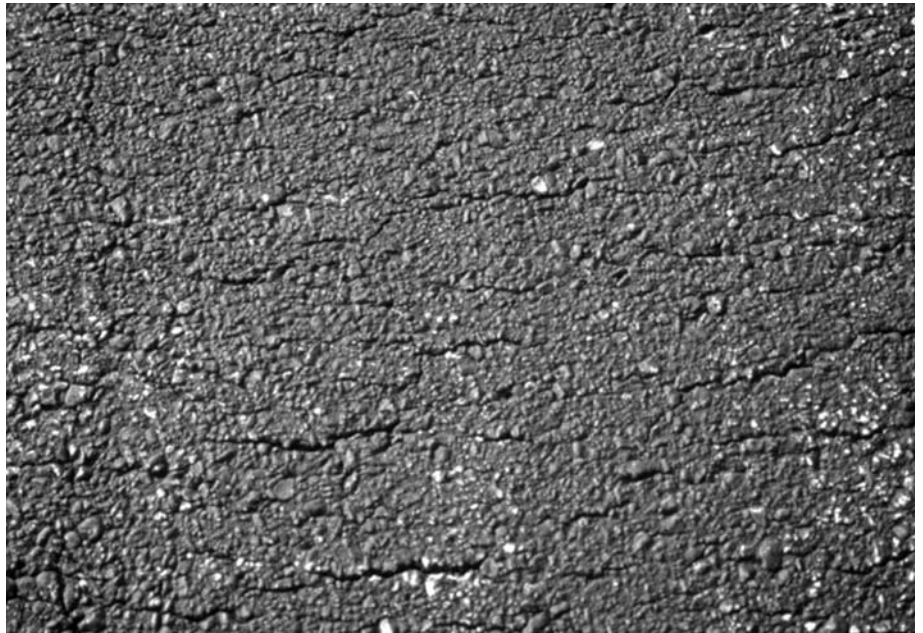
Reflection cracks

Cracks in overlays reflect the crack pattern in the pavement underneath. They are caused by movement in the underlying pavement due to temperature change. This movement creates very large stress in the overlay. Therefore, they are difficult to prevent and correct.

►
Cracks
reflected
through
bituminous
overlay.



►
Hairline cracks
reflected through
sealcoat.

***Slippage cracks***

Crescent or rounded cracks caused by slippage between an overlay and an underlying pavement. Slippage is most likely to occur at locations where traffic is stopping and starting. Repair by removing the top surface and resurfacing using a tack coat.



▲ Loss of bond between pavement layers allows traffic to break loose pieces of surface.



Paving joint and edge cracks

Paving joint cracks are caused by inadequate bonding and poor compaction of the joint during construction. They may also be caused by reflection of poor joints in the underlying pavement. Cracks within one foot of the edge are caused by insufficient shoulder support, poor drainage, or frost action. Cracks usually start as hairline or very narrow, widening and eroding with age. Without crack filling, they can ravel, develop multiple cracks, and become wide enough to require patching.

Sealing cracks will help reduce moisture penetration and prevent further subgrade weakening.



▲ Paving joints. Slight crack on joint near center. Open joint on right side.

◀ Partially open 1/4" paving joint.



◀ First stage of wheelpath cracking caused by heavy traffic loads.

▶ Severe cracking and edge distress.



◀ Edge cracking in asphalt along concrete slab.



10 EVALUATION — Cracks

Block cracks

Block cracking is interconnected cracks forming large blocks. Cracks usually intersect at nearly right angles. Blocks may range from one foot to approximately 10' or more across. The closer spacing indicates more advanced aging caused by shrinking and hardening of the asphalt over time. Apply surface treatments during early stages to reduce weathering of the asphalt caused by exposure to the sun, moisture and freezing. Overlay or reconstruction is required in the advanced stages.



▶ Right angle cracking forms blocks.



▶ Large blocks with open cracks filled with grass.



▶ Small blocks with open cracks.



Alligator cracks

Interconnected cracks forming small pieces ranging in size from about 1" to 6". This is caused by failure of the entire pavement due to traffic loading (fatigue) and usually due to inadequate base or subgrade support. Repair by excavating and replacing failed subgrade base and surface. Large areas require reconstruction. Improvements in drainage may often be required.



Alligator crack pattern. Tight cracks and one patch.



Alligator cracking near pavement edge.



Alligator cracking and pothole.

12 EVALUATION — Patches and Potholes

PATCHES AND POTHoles

Patches

Original surface repaired with new asphalt patch material. Indicates a pavement defect or utility excavation which has been repaired. Patches with cracking, settlement or distortions indicate underlying causes remain. Repair or reconstruction are required when extensive patching shows distress.



▲
Typical repair of utility excavation. Patch in good condition.

▶
Patched area in poor condition.

▼
Overlay repair with edge raveling and cracks.





Potholes

Holes and loss of pavement material are caused by traffic loading, fatigue and inadequate strength. Often combined with poor drainage, this can create dangerous pavement debris. Repair by excavating or rebuilding localized potholes. Reconstruction required for extensive defects.



▲
Shallow
pothole.

◀
Large pothole
and dangerous
loose debris.

Complete
pavement
failure.



Rating pavement surface condition

With an understanding of surface distress, you can evaluate and rate asphalt pavement surfaces. The rating scale ranges from **5–excellent** condition to **1–failed**. Most pavements will deteriorate through the phases listed in the rating scale. The time it takes to go from excellent condition (5) to complete failure (1) depends largely on the quality of original construction, age, and the amount of heavy traffic loading.

Once significant deterioration begins, it is common to see pavement decline rapidly. This is usually due to a combination of loading and the effects of additional moisture. As a pavement ages and additional cracking develops, more moisture can enter the pavement and accelerate the rate of deterioration.

Look at the photographs which follow and become familiar with the descriptions of the individual rating categories. To evaluate an individual pavement segment, first determine its general condition. Is it relatively new, toward the top end of the scale? In very poor condition and at the bottom of the scale? Or somewhere in between? Next, think generally about the appropriate maintenance method. Use the outlined rating categories.

Finally, review the individual pavement distress and select the appropriate surface rating. A given pavement will likely **not** have all of the types of distress listed for any particular rating. It may have only one or two types.

In addition to indicating the surface condition of a pavement, a given rating also includes a recommendation for needed maintenance or repair. This feature of the rating system facilitates its use and enhances its value as a tool in ongoing airfield pavement maintenance.

Rating 5 – Excellent

No maintenance required

Rating 4 – Good

Minor routine maintenance, crack sealing

Rating 3 – Fair

Preservative treatments, crack sealing and surface treatment

Rating 2 – Poor

Structural improvement and leveling (patching then overlay)

Rating 1 – Failed

Reconstruction

Rating system

Surface rating	Visible distress*	General condition/treatment measures
5 Excellent	None, or initial thermal cracks, all narrow (less than 1/8")	New pavement less than 5 years old. No maintenance or isolated crack sealing required.
4 Good	Additional thermal cracking. Cracks generally spaced more than 50' apart. Less than 10% of cracks and joints need sealing. Minimal or slight raveling. No distortion. Patches in good condition.	Recent sealcoat or pavement over 5 years old. Seal open cracks or joints and replace sealant where needed.
3 Fair	Moderate raveling. Thermal cracks and joints generally spaced less than 50' apart. Crack sealing or repair of sealant needed on 10%-25% of cracks or joints. Edge cracks along 10% or less of pavement edges. Block crack pattern with cracks 6'-10' apart. Isolated alligator cracking and poor patches. Minor distortion or crack settlement less than 1".	Seal open cracks and joints. Replace failed sealant. Apply new surface treatment or thin overlay. Minor patching and joint repair.
2 Poor	Frequent thermal cracks. Wide cracks and joints with raveling in cracks. Deterioration along more than 25% of cracks. Edge cracks on up to 25% of pavement edges. Block cracks spaced 5' apart or less. Alligator cracking or poor patches cover up to 20% of surface area. Distortion or settlement 1"-2".	Needs significant crack sealing plus patching and repair on up to 25% of pavement surface. Overlay entire area with structural overlay.
1 Failed	Widespread, severe cracking with raveling and deterioration. Alligator cracking and potholes over 20% of the area. Distortion over 2".	Condition may be limiting service. Needs reconstruction.

* A given pavement segment may only have one or two types of distress rather than all of the types listed for a particular rating.



RATING 5

**EXCELLENT —
No maintenance
required or isolated
crack sealing.**

New pavement less than 5 years old. No visible distress or initial thermal cracks, all less than 1/8".

◀
**New
pavement.**

**Recent overlay.
Sealed joint.**
▼



16 Rating pavement surface condition

RATING 4

**GOOD —
Seal open cracks or joints.**

Recent sealcoat or pavement over 5 years old. Additional thermal cracking. Cracks spaced 10'-20' apart. Open cracks and joints need sealing on less than 10% of cracks. No distortion and patches in good condition.

►
Recent sealcoat.

Cracks sealed.
No distortion.
Slight raveling.
▼



►
Pavement more than 5 years old. No patches or distortion. Schedule routing and sealing for isolated open joints.





◀ Cracks widely spaced and sealed.

▼ Joints would benefit from sealing.



▲ Old sealant is leaking. Needs replacement at isolated locations.



18 Rating pavement surface condition

RATING 3

FAIR —

Seal open cracks and joints. Apply new surface treatment or thin overlay. Minor patching and joint repair.

Moderate raveling. Thermal cracks and joints, generally spaced less than 50' apart. Crack sealing or repair of sealant needed on 10%-25% of cracks or joints. Edge cracks along 10% or less of pavement edges. Block crack pattern with block cracks 6'-10' apart. Isolated alligator cracking and poor patches. Minor distortion or crack settlement less than 1".



▲ Thermal cracks less than 10' apart. Slight raveling.



▶ Several patches in good condition.

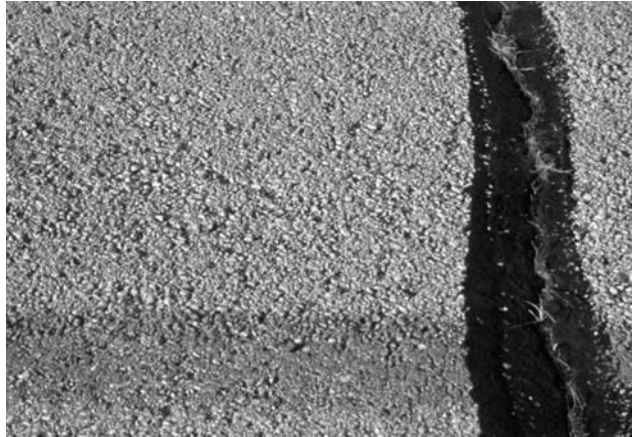
▼ Worn sealcoat needs new surface treatment.

▼ Open cracks need sealing.





◀ Moderate raveling.
Joint needs sealing.



◀ Moderate raveling.
Needs surface treatment soon.



◀ Pavement settlement at crack less than 1" deep.



◀ Joint sealant needs replacement at several locations. Follow with new surface treatment on apron.



◀ Edge cracking at several locations.

20 Rating pavement surface condition

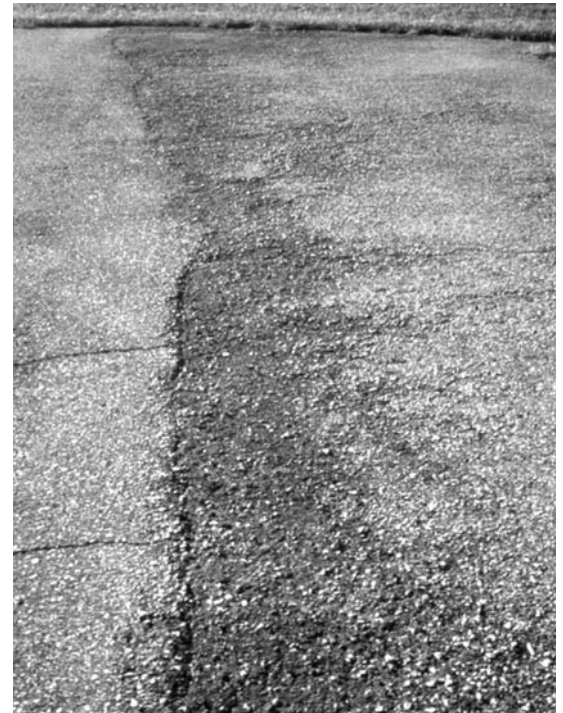
RATING 2

POOR —
Needs significant crack sealing plus patching and repair on up to 25% of pavement surface. Use structural overlay over entire area.

Frequent thermal cracks. Wide cracks and joints with raveling in cracks. Deterioration along more than 25% of cracks. Edge cracks on up to 25% of pavement edges. Block cracks spaced 5' apart or less. Alligator cracking or poor patches cover up to 20% of surface area. Distortion or settlement 1"-2".

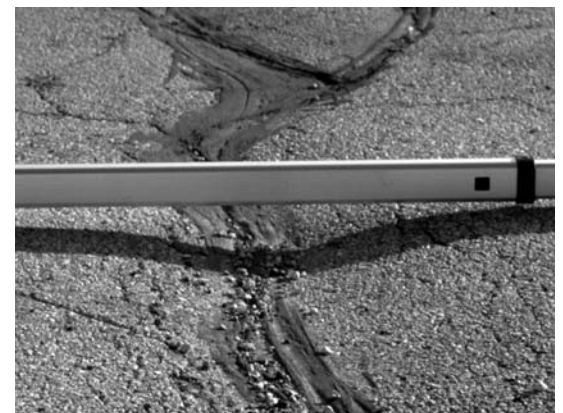


▲ Wide cracks with no sealant.



▶ Severe raveling.

▶ Multiple cracks open and deteriorated
▶ Numerous cracks with settlement over 1".
▶▶



▲ Block cracking with cracks less than 5' apart.

▶ Patch in poor condition.





◀ Needs overlay.



◀ Edge cracking on up to 25% of the pavement.



◀ More than 25% of crack sealant needs replacement. Minor settlement over cracking.

▼ Sealant repair needed on more than 25% of cracks.

▼ Repair broken pavement and apply overlay.



22 Rating pavement surface condition

RATING 1

FAILED —
Condition may be limiting service. Needs reconstruction.

Widespread, severe cracking with raveling and deterioration. Alligator cracking and potholes over 20% of the area. Distortion over 2"

Over 25% alligator cracking.



▲ Extensive alligator cracking. Poor patches.

▲ Severe cracking and deterioration.



▲ Failed patch. Settlement over 2".

▶ Extensive failed pavement and debris.



Practical advice on rating airfield pavements

Inventory and field inspection

Most airport owners routinely observe pavement conditions as a part of their normal work. However, an actual inspection means looking at the entire system as a whole and preparing a written summary of conditions. This inspection has many benefits over casual observations. It can be helpful to compare pavement features as a whole system so ratings and maintenance decisions can be more consistent.

An inspection also encourages a review of specific conditions important in pavement maintenance, such as drainage, adequate strength, and safety.

A simple written inventory is useful in making decisions where other people are involved. You do not have to trust your memory, and you can usually answer questions in more detail. Having a written record and objective information also improves your credibility with the funding agencies.

Finally, a written inventory is very useful in documenting changing pavement conditions. Without records over several years, it is difficult to know if conditions are improving, holding their own, or declining.

A sample inventory form is shown on the inside back cover. It is very helpful to collect background information on each feature. Pavement thickness, age, and major maintenance are examples of helpful information.

Annual budgets and long range planning are best done when based on actual needs as documented with a written inventory.

Pavement features

Inventory and pavement condition data are normally organized by dividing the pavements into segments or features.

A plan or aerial photo of the entire airfield is most helpful in identifying these individual features. Runways, taxiways and aprons should be considered as separate categories. Within each category, the pavement should be separated into features with similar construction. For example, pavements with different thickness, age, or type of construction should be rated separately.

A runway may be all one feature if conditions are similar. However, if parts of the runway have significantly different construction details or condition, then separate features will make the rating more logical and useful.

Each taxiway, can be considered a separate feature. You may combine several sections of taxiway if conditions are similar.

Apron areas can be separated into features according to the areas they serve. For example, aprons serving a terminal, hangers, tie-down area, or fueling area would be separate features. Areas in different conditions may also be separated into features.

Averaging and comparing sections

No pavement feature is entirely consistent. Also surfaces in one section may not have all of the types of distress listed for any particular rating. They may have only one or two types.

The objective is to rate the condition that represents the majority of the pavement feature. Small or isolated conditions should not influence the rating. It is useful to note these special conditions on the inventory form so this information can be used in planning specific improvement projects. For example, some spot repairs may be required.

Occasionally surface conditions vary

significantly within a feature. For example, short sections of good condition may be followed by sections of poor surface conditions. In these cases, it is best to rate the feature according to the worst conditions and note the variation on the form.

The overall purpose of condition rating is to be able to compare each feature relative to all the other features in your airport pavement system. On completion you should be able to look at any two pavement features and find that the better surface has a higher rating.

Assessing drainage conditions

Moisture and poor pavement drainage are significant factors in pavement deterioration. Some assessment of drainage conditions during pavement rating is highly recommended. While you should review drainage in detail at the project level, at this stage simply include an overview drainage evaluation at the same time as you evaluate surface condition.

Consider both pavement surface drainage and lateral drainage (ditches or storm sewers). Pavement should be able to quickly shed water off the surface. Ditches should be large and deep enough to drain the pavement and remove the surface water efficiently into adjacent waterways.

Look at the crown and check for low surface areas that permit ponding. Runways and taxiways should have approximately a 1.5% cross slope or crown across the pavement. Apron areas require positive drainage and often include storm drainage systems. Maintenance of the entire drainage system is critical. Ditches, subsurface drains and outlets should be inspected and cleaned regularly.

A pavement's ability to carry heavy traffic loads depends on both the pavement materials (asphalt surfacing and granular base) and the strength of the underlying soils. Most soils lose strength when they are very wet. Therefore, it is important to provide drainage to the top layer of the subgrade supporting the pavement structure.

Planning annual maintenance and repair budgets

We have found that relating a normal maintenance or rehabilitation procedure to the surface rating scheme helps managers use the rating system. However, an individual surface rating should not automatically dictate the final maintenance or rehabilitation

technique.

Consider future traffic projections, original construction, and pavement strength since these may dictate a more comprehensive rehabilitation than the rating suggests.

Summary

Using funds most efficiently requires good planning and accurate identification of appropriate rehabilitation projects. Assessing pavement conditions is an essential first step in this process. This asphalt pavement surface condition rating procedure has

proven effective in improving decision making and using funds more efficiently. It can be used directly by airport staff and consultants. It may be combined with additional testing and data collection in a more comprehensive pavement management system.

References

Concrete Aviation Airfields PASER Manual, 2003, Engineering Professional Development, College of Engineering, University of Wisconsin-Madison.

Guidelines and Procedures for Maintenance of Airport Pavements, 7/14/03, Federal Aviation Administration, Advisory Circular AC:150/5380-6A.

AIRFIELD PAVEMENT INVENTORY

Airfield _____ Condition survey date _____

Done by _____

Facility (runway, taxiway, apron) _____

Feature description _____

Feature location _____

Feature area _____

Construction date _____

Pavement type: Asphalt Concrete Layer thicknesses: _____

Maintenance history _____

PASER Rating (5 = Excellent, 4 = Good, 3 = Fair, 2 = Poor, 1 = Failed)

Comments on pavement and drainage conditions _____

Recommended maintenance _____

Recommended rehabilitation _____

PASER

Asphalt Airfield Pavements

**APPENDIX 2--CONCRETE AIRFIELD PAVEMENT
SURFACE EVALUATION AND RATING MANUAL**

Pavement Surface Evaluation and Rating

PASER

Concrete Airfield Pavements

Manual



RATING
5



RATING
3



RATING
1



Contents

Introduction	2
Evaluating pavement condition	3
Surface defects	4
Joints	6
Pavement cracks	7
Pavement distortion	10
Rating pavement surface condition	13
Rating system	13
Rating 5 — Excellent	14
Rating 4 — Good	14
Rating 3 — Fair	15
Rating 2 — Poor	16
Rating 1 — Failed	17
Practical advice on rating roads	19
Airfield Pavement Inventory	<i>inside back cover</i>

This manual is intended to assist airfield managers in understanding and rating the surface condition of rigid Portland Cement Concrete (PCC) pavements. It describes types and causes of distress and provides a simple system to visually rate pavement condition.

Produced for the Federal Aviation Administration by Engineering Professional Development, College of Engineering, University of Wisconsin-Madison.

Pavement Surface Evaluation and Rating

PASER Concrete Airfield Pavements Manual

Donald Walker, P.E., University of Wisconsin–Madison, *author*

Lynn Entine, Entine & Associates, *editor*

Susan Kummer, Artifax, *designer*



PASER — Pavement Surface Evaluation and Rating

Concrete Airfield Pavements

An airport manager's goal is to use available funds to provide a safe and economical pavement surface. This is no simple task. It requires balancing priorities and making difficult decisions in order to manage pavements. This manual offers useful information for planning maintenance and managing Portland Cement Concrete (PCC) pavements. It discusses common problems and typical repairs and includes a visual system for evaluating and rating PCC pavements.

General aviation airfield pavements are often managed informally, based on the staff's judgment and experience. While this process is both important and functional, using a slightly more formalized technique can make it easier to manage pavements effectively.

Experience has shown that there are three steps that are especially useful in managing airfield pavements:

- 1) Inventory all pavements.
- 2) Periodically evaluate the condition of all pavements.
- 3) Use the condition evaluations to set priorities for projects and evaluate alternative treatments.

A comprehensive pavement management system involves collecting data and assessing several pavement characteristics: roughness, surface distress (condition), surface skid characteristics, drainage, and structure (pavement strength and deflection). Planners can combine this condition data with economic analysis, to develop short-range and long-range plans for a variety of budget levels. However, general aviation agencies may lack the resources for such a full-scale system.

Since surface condition is the most vital element in any pavement management system, managers may use the simplified rating system presented in this Concrete Airfield Pavements PASER Manual to evaluate their pavements. A PASER Manual for asphalt airfield pavements is also available (see References, page 20).

Evaluating pavement condition

Rigid pavement performance

PCC pavements are either plain (non-reinforced) or reinforced concrete. Reinforcement is usually provided by steel wire mesh placed approximately at mid-slab depth. The reinforcement is intended to limit crack opening and movement in the concrete slab. Most airfield pavements are not reinforced.

Since concrete slabs need to move (expand and contract) with changes in temperature and during initial cure (drying and shrinkage), pavements are constructed with contraction joints. These are usually sawn into the pavement shortly after initial curing. This joint gives the slab a place to crack and makes a straight, well-formed groove to seal. Runways, taxiways and aprons (ramps) are sawn to create square slabs ranging from 15' to a maximum of 25'.

Isolation joints are occasionally provided. These are wider, full depth, and filled with a material to allow expansion. If used, they are placed adjacent to structures that cannot move with the pavement such as buildings, manholes, and other utility structures. These isolation joints are also used at pavement intersections and allow changes in joint patterns.

Rigid, PCC pavements carry traffic loadings differently than flexible pavements (asphalt). Concrete pavements are designed to act like a beam and use the bending strength of the slabs to carry the load. Therefore, load transfer across cracks and joints is important, especially on pavements with heavy traffic loading. Hairline and narrow cracks still have interlocked concrete aggregate and can effectively transfer loads. Because wide cracks and widely-spaced joints open up, they cannot transfer loads and must take

higher edge loads. These higher edge loads can cause further cracking and deterioration along the joint, or crack edges.

Many concrete pavements use joints that have load transfer dowels. These are smooth steel bars placed across the joint. They transfer traffic loads between adjacent concrete slabs while allowing the joint to open and close. These bars can rust and sometimes cause problems. The corrosion causes forces on the concrete which leads to spalling, cracking, and general joint deterioration. Epoxy coated dowels may be used to reduce corrosion.

Unsupported slab edges will deflect or bend under a load. If the supporting soil is saturated it can squirt up through joints or cracks when the slab bends. This is called *pumping*. Eventually the loss of supporting soil through pumping creates an empty space or void under the slab. The slabs may then crack further under loads and joints will deteriorate more.

Undoweled joints under heavy traffic may *fault*. This is when one slab edge is lower than the next slab. Faulting is more likely on pavements with most of the traffic in one direction. The downstream traffic slab will be lower than the upstream slab, creating a step. Faulting creates a rough pavement.

You can often detect pumping by the soil stains around pavement joints or cracks. The resulting voids can be grouted full or sub-sealed. Slabs can be leveled by slab jacking or mud jacking. Obviously, sealing cracks and joints and improving subsoil drainage will help reduce pumping, faulting, and joint failures.

PCC pavement conditions and defects

It is helpful to separate various conditions common to PCC pavements. These are described individually in some detail. We include causes for deterioration and common strategies for repair. Some defects are localized while others indicate that problems may develop throughout the pavement. It is important to distinguish between local and widespread defects. Assessing the conditions of actual pavements also involves looking for combinations of these individual defects.

There are four major categories of common PCC pavement surface distress and condition:

Surface defects

Polishing, map cracking, pop-outs, scaling, spalling.

Joints

Longitudinal and transverse joints.

Pavement cracks

Slab cracks, D-cracking, corner cracks, meander cracks, manhole and inlet cracking.

Pavement distortion

Pavement settlement or heave; blow ups; faulting; utility repairs, patches and potholes.

In reviewing the different defects it is important to consider both their severity and extent. Generally, conditions begin slowly and progressively become more serious. Slight defects may grow into moderate and then severe conditions. In addition, defects might initially be indicated only in a few isolated cases. Examples in the rating section will help identify how bad and how extensive a condition is.

4 EVALUATION — Surface Defects

SURFACE DEFECTS

Polishing

A worn or polished surface may develop from traffic wearing off the surface mortar and skid-resistant texture. An asphalt overlay or grinding the concrete surface can restore skid resistance.

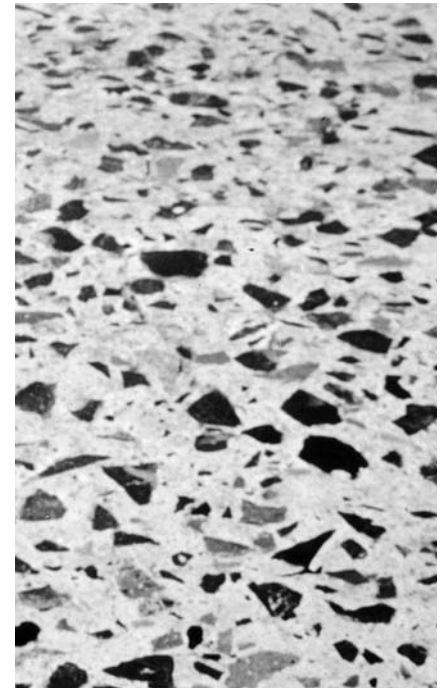
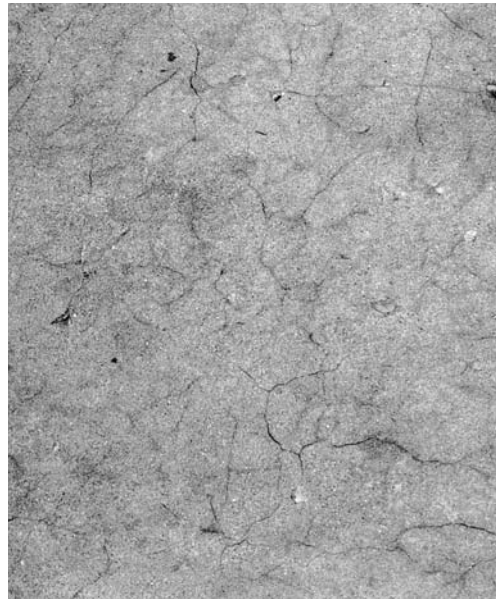
Map cracking

A pattern of fine cracks usually spaced within several inches is called map cracking. It usually develops into square or other geometrical patterns. Map cracking can be caused by improper cure or over-working the surface during finishing. It may also indicate a problem with the quality of the aggregate known as ASR (alkali-silica reactivity). If severe, cracks may spall or the surface may scale. Repair is usually limited to very severe conditions. An asphalt overlay or partial depth patching may then be necessary.

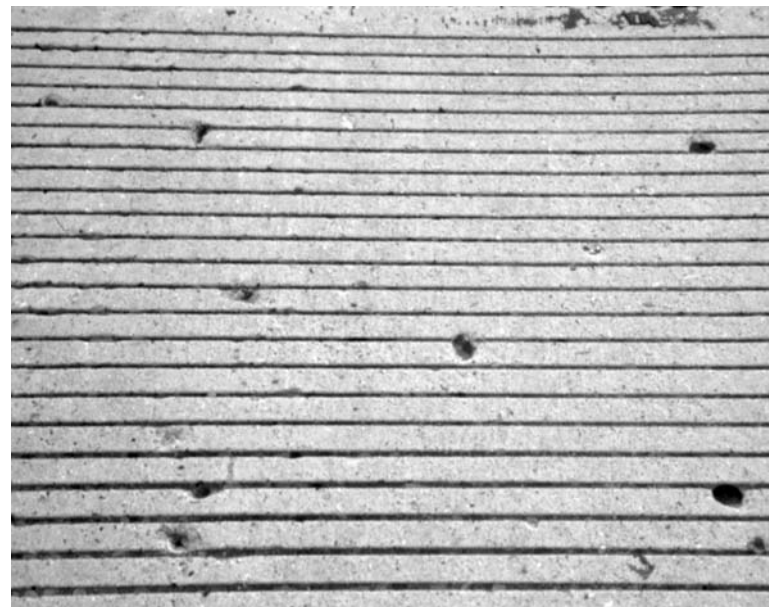
Pop-outs

Individual pieces of large aggregate may pop out of the surface. This is often caused by chert or other absorbent aggregates that deteriorate under freeze-thaw conditions. Pop-outs alone do not usually affect pavement serviceability. However, damage to aircraft from the debris may occur. For severe areas, a patch, overlay or slab replacement may be necessary.

Close-up of a polished pavement surface.



▲ Map cracking has hairline surface cracks, probably shallow in depth. May not cause any long-term performance problems.



► Several pop-outs in a new slab.

► Extensive pop-outs of large aggregate from surface.





▲ Slight scaling. Minor loss of surface mortar.



► Moderate surface scaling. Loss of mortar and fines starting to expose larger aggregate.



◀ Severe scaling. Some larger aggregate is loose.



◀ Small surface spall that has been patched.



◀ Spalling along a joint.

◀ Spall at crack. Creates dangerous debris.

Scaling

Scaling is surface deterioration that causes loss of fine aggregate and mortar. More extensive scaling can result in loss of large aggregate. The cause often is using concrete which has not been air-entrained, making the surface susceptible to freeze-thaw damage.

Scaling can occur as a general condition over a large area or be isolated to locations where poor quality concrete or improper finishing techniques caused loss of entrained air. In severe cases, deterioration can extend deep into the concrete. Debris from scaling can damage aircraft.

Grinding may remove poor quality surface concrete. Partial depth patching of isolated areas may also prolong the life of the pavement. Severe scaling may require slab replacement.

Spalling

Spalling is the loss of a piece of the concrete pavement from the surface or along the edges of cracks and joints. Cracking or freeze-thaw action may break the concrete loose, or spalling may be caused by poor quality materials. Spalling may be limited to small pieces in isolated areas or be quite deep and extensive. Large pieces of loose concrete can cause serious damage to aircraft.

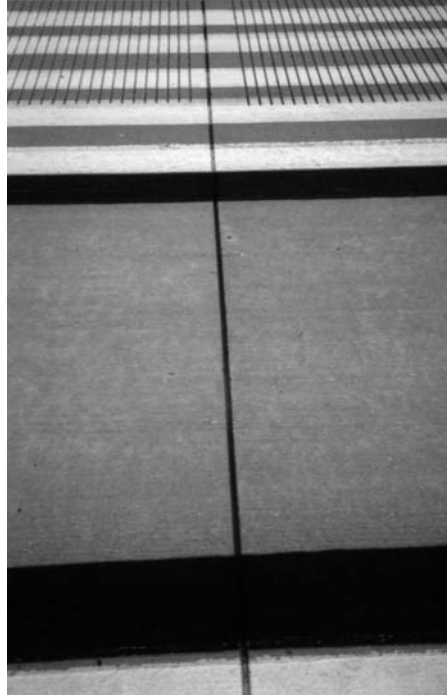
Repair will depend on the cause. Small spalled areas are often patched. Spalling at joints may require full depth joint repair or full slab replacement.

6 EVALUATION — Joints

JOINTS

Construction joints or sawn joints are narrow and usually well sealed. As pavements age and materials deteriorate, joints may open wider and deteriorate further. Cracks parallel to the initial joint may develop and accelerate into spalling or raveling. Settlement, instability, or pumping of subgrade soil can cause joints to fault. One common cause of cracks parallel to joints is waiting too long after the pour to saw the joint. Then, during initial cure the slab will crack near the sawn joint.

Maintaining a tight joint seal can prevent intrusion of water and debris and reduce freeze-thaw damage and pumping. Debris may accumulate in open joints which prevents normal joint movement. This will greatly accelerate joint deterioration. Severe joint deterioration may require full depth patching and joint replacement.



▲ New pavement with good joints.



▲ Joint sealant deterioration on apron. Slab is in good condition.

▶ Taxiway with spalled joint.



▲ Joint sealant in poor condition. Loss of bond to edge allows water into pavement.



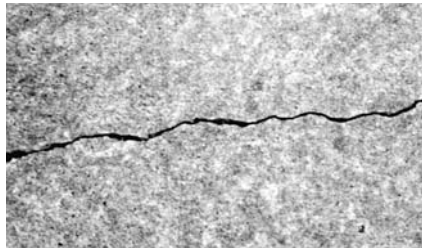
▲ Severe spalling along joint and crack. Creates debris.

PAVEMENT CRACKS

Slab cracks

Slab cracks divide the slab into 2 or more pieces. They can be caused by thermal stresses, poor subgrade support, or heavy loadings. They are sometimes related to slabs with joints spaced too widely. Slabs with a length-to-width ratio greater than 1.25 are more likely to develop mid-slab cracks.

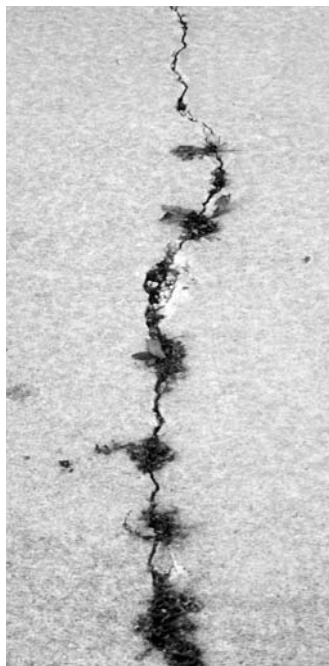
As with joints, these cracks may deteriorate further if not sealed well. Slabs can fault at cracks. Cracks can spall and develop additional parallel cracking. Severe deterioration may require patching individual cracks. Multiple transverse cracks in individual slabs indicate further deterioration. Extensive slab cracking indicates pavement failure and the need for complete replacement.



▲
**Hairline slab crack.
Tight with no spalling.**

◀
**Crack next to joint often
caused by late sawing. Crack
shows early signs of spalling.**

▼
**Slab crack with grass,
no sealant, and spalls
developing.**



◀◀
**Slab crack
with spalling
and debris.**

▼
**Multiple slab cracks
and broken pavement.
Replacement needed.**



◀
**Closely spaced, hair-line,
transverse cracks indicate slab
is broken and needs replacing.**



8 EVALUATION — Cracks

D-cracks

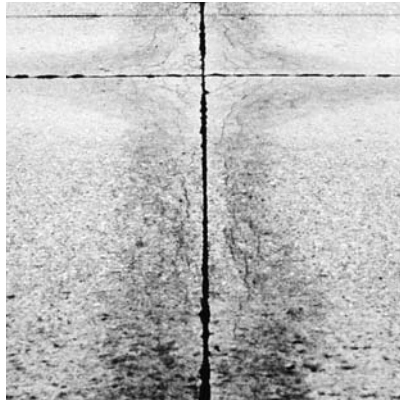
Occasionally, severe deterioration may develop from poor quality aggregate. So called D-cracks or disintegration cracking, develop when the aggregate is able to absorb moisture.

This causes the aggregate to break apart under freeze-thaw action which leads to deterioration. Usually, it starts at the bottom of the slab and moves upward.

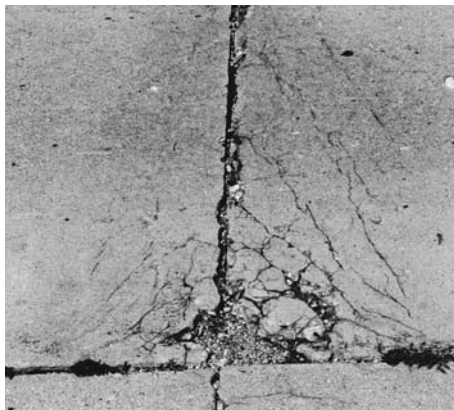
Fine cracking and a dark discoloration adjacent to the joint often indicate a D-cracking problem. Once this is visible on the surface the pavement material is usually severely deteriorated and complete replacement is required.

Joint or crack sealing helps slow D-cracking deterioration. This is a serious defect because it may indicate a material quality problem throughout the pavement. Milling and patching has proven successful as a short term repair.

Surface discoloration near joints and cracks indicates D-cracking and severe slab deterioration.



Multiple crack patterns adjacent to joints. Common D-cracking pattern.



Corner cracks

Diagonal cracks may develop near the corner of a concrete slab, forming a triangle with the joint. Usually these cracks are within a foot or two of the slab corner and are caused by insufficient soil support or concentrated stress due to temperature-related slab movement. The corner breaks under traffic loading. They may begin as hairline cracks.

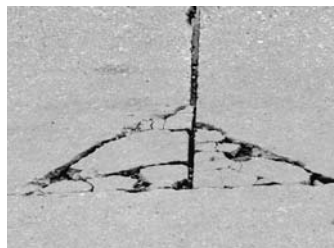
Some corner cracks extend the full depth of the slab while others start at the surface and angle down toward the joint. With further deterioration, more cracking develops, and eventually the entire broken area may come loose. This may be a localized failure, but it often indicates widespread maintenance problems.

Partial or full depth concrete patching or full depth joint replacement may be needed when corner cracking is extensive.

Corner cracking with slight spalling.



Corner cracking, severe spalling, and dangerous debris.



Corner cracking in all four slabs.





◀ **Meander crack caused by settlement. Lack of maintenance allows water to intrude and debris to collect in crack.**

Meander cracks

Some pavement cracks appear to wander randomly. They may cross a slab diagonally or meander in a random manner. Meander cracks may be caused by settlement due to unstable subsoil or drainage problems. Frost heave and spring thaw can also cause them. They are often local in nature and may not indicate general pavement problems.

Minor cracks may benefit from sealing to minimize water intrusion. Extensive or severe meander cracks may require replacing the slab, stabilizing the subsurface, or improving drainage.



◀ **Faulting and spalling of a meander crack.**

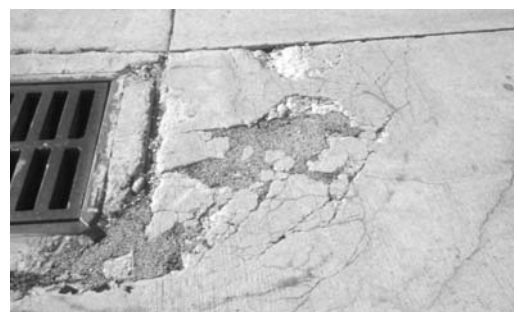
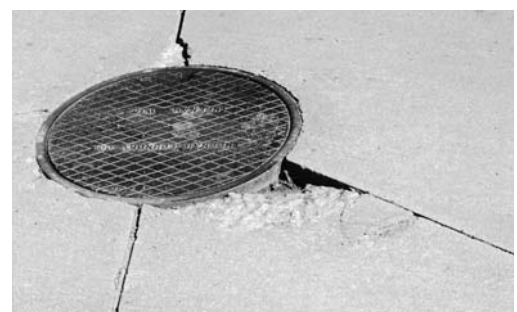
Manhole and inlet cracks

The pavement adjacent to a light can, manhole, or storm sewer inlet often cannot accommodate normal pavement movement due to frost heaving and temperature changes. Cracks and faulting may develop and the concrete slab may deteriorate further. These are often localized design defects that may not indicate a general pavement problem. Sealing and patching may slow the deterioration. Eventually full depth repairs may be required.



▲ **Slabs replaced next to inlet. Good joint design.**

▼ **Two spalls at manhole in a new pavement. Partial depth patching would be beneficial.**



▶ **Inlet with severe cracking and spalling. Full depth slab repair required.**

PAVEMENT DISTORTION

Pavement settling or heave

Unstable or poorly drained subgrade soils may cause pavements to settle after construction. Poorly compacted utility trenches may also settle. This may be a gentle swale or a fairly severe dip.

Frost-susceptible soils and high water tables can cause pavements to heave during the winter months. Extensive pavement cracking and loss of strength during the spring can result in severe deterioration. Improved drainage and stabilization of subgrade soils is usually necessary, along with pavement reconstruction.

Blowups

Concrete slabs may push up or be crushed at a joint. This is caused by expansion of the concrete where incompressible materials (sand, debris, etc.) have infiltrated into poorly sealed joints. As a result, there is no space to accommodate expansion. It is more common in older pavements with long joint spacing. Pavements that have aggregate susceptible to ASR may experience more frequent blowups. Pressure relief joints can be installed and blowup areas must be patched or reconstructed. Cleaning and sealing joints will help prevent blowups.

▼ **Pavement blowup in progress—concrete is crushed and slab buckled.**



▲ **Settlement caused meander crack with faulting.**

▼ **Extensive cracking and patching caused by settlement. Pavement was built on unstable sub-grade soils.**



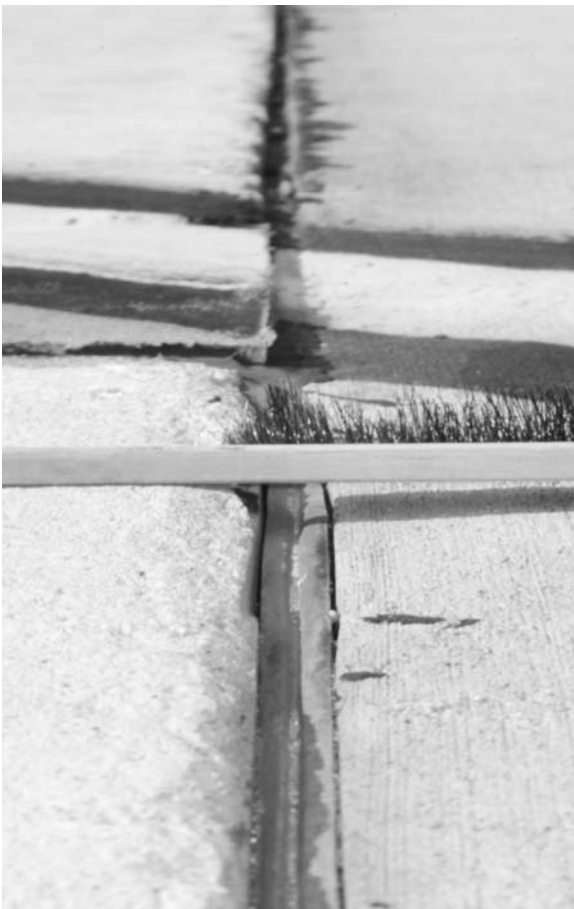
▲ **Internal pressure has partially raised slab at the joint. Complete replacement is required.**



Faulting

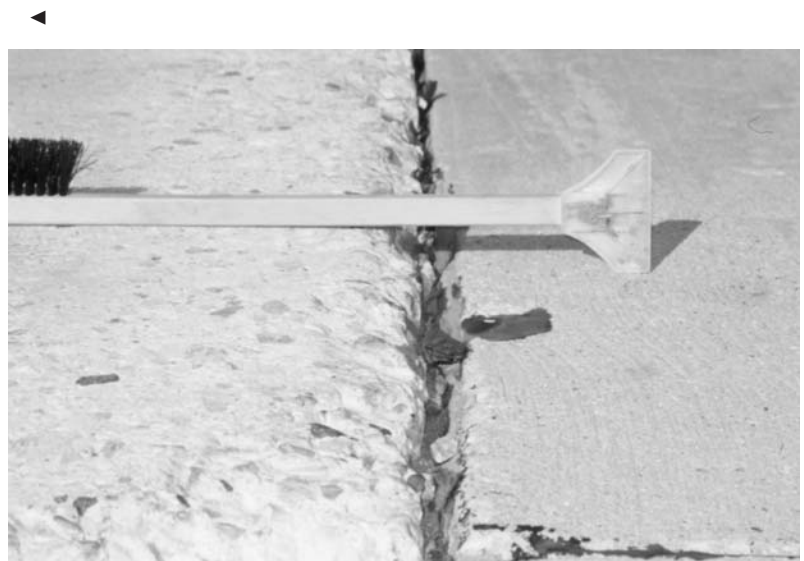
Joints and cracks may fault or develop a step between adjacent slabs. Faulting is caused by pumping of subgrade soils and creation of voids. Heavy traffic can rapidly accelerate faulting. Joints may fault due to settlement of an adjacent slab.

Faulting creates a rough pavement and may cause slab deterioration. Minor faulting can be corrected by surface grinding. Voids can be subsealed, or slabs can be mud jacked back to level position. Severe cases may need joint or slab replacement.



▲ **Faulting of joints. Aggravated by heavy traffic in one direction. Could improve surface by grinding.**

Severe joint fault.



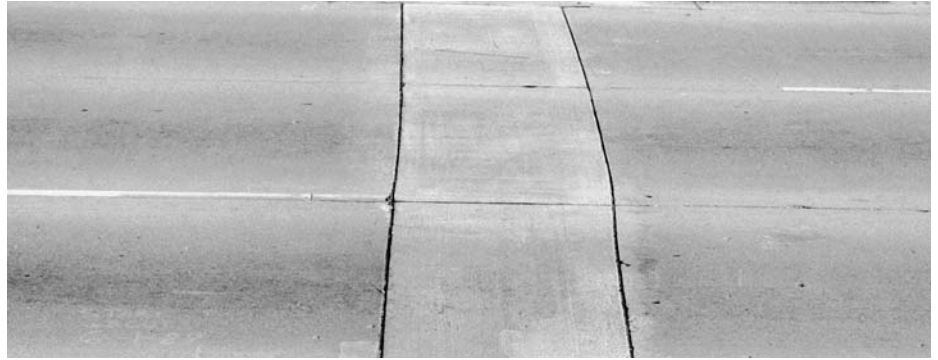
▶ **Severe joint fault and spalling.**

12 EVALUATION — Distortion

Utility repairs, patches and potholes

Slab replacement or repair of utilities will require cuts and slab patching. Patches from previous repairs may perform like original pavement or may show settlement, joint deterioration or distress.

Localized failures of materials or subgrade soil can cause individual potholes. Surface spalling or other material defects may develop into localized potholes. Full depth patching or slab replacement is usually required.



▲ Full depth joint repair. Very good condition.

▶ Joint repair with asphalt. Very good condition.



▶ Partial depth concrete patch to repair corner cracks. Good condition.



▼ Potholes caused by severe joint deterioration. Need repair.



▶ Asphalt patches. Poor (top) and fair (bottom) condition.



Rating pavement surface condition

Using your understanding of pavement conditions and distress, you can evaluate and rate airfield PCC pavements. The rating scale ranges from **5–excellent** condition to **1–very poor or failed**. Some pavements will deteriorate through the phases listed in the rating scale. The time it takes to go from an excellent (5) to failed condition (1) depends largely on the quality of the original construction, age, and the amount of heavy traffic loading.

Once significant deterioration begins, it is common to see pavements deteriorate rapidly. This is usually due to the combined effects of loading and additional moisture. As a pavement ages and additional cracks develop, more moisture can enter and accelerate the rate of deterioration.

Look at the photographs which follow and become familiar with the descriptions of the individual rating categories. To evaluate an individual pavement, first determine its general condition. Is it relatively new, toward the top end of the scale? In very poor condition and at the bottom of the scale? Or somewhere in between? Next, think generally about the appropriate maintenance method.

Finally, review the individual pavement condition and distress and select the appropriate pavement surface rating. Individual pavements may not have all of the types of distress listed for any particular rating. They may have only one or two types. Use the categories in the rating table below.

Each rating also includes a recommendation for needed maintenance or repair. This makes the rating system easier to use and enhances its value as a tool in ongoing airfield pavement maintenance.

Rating 5 – Excellent

No maintenance required.

Rating 4 – Good

Minor routine maintenance, crack or joint sealing.

Rating 3 – Fair

More crack or joint sealing. Isolated joint repairs or slab patching.

Rating 2 – Poor

Extensive crack or joint sealing. Repair severe joint deterioration. Partial and full-depth slab repairs.

Rating 1 – Failed

Reconstruction.

Rating system

Surface rating	Visible distress*	General condition/treatment measures
5 Excellent	None.	New pavement or recent major concrete rehabilitation. Like-new condition. Less than 5 years old. No maintenance required.
4 Good	Hairline or sealed cracks 1/8" wide or less. Map cracking. Pop-outs.	Concrete over 5 years old. Signs of wear. Minor spot repair of cracks or joint sealant.
3 Fair	Several slabs broken into two pieces by slab cracks. Corner cracking on several slabs, 1/4" wide with no spalling. Joint sealant mostly in good condition, less than 10% needing replacement. Several patches in fair to good condition. Map cracking or scaling on 10% or less of the surface area. Slight faulting, less than 1/4", in several locations.	First sign of significant slab cracking, corner cracking, scaling, or faulting. Several patches. Joint sealant repair required. Isolated repair of joint or patch.
2 Poor	Many slab cracks, some breaking the slab into three or more pieces. Cracks open 1/8" or cracks with spalling. D-cracks at several joints. Sealant failure over 10% of joints. Several patches in fair to poor condition with cracks in patch and uneven surface. Faulting 1/4" to 1/2" in several locations. Severe or extensive scaling.	Needs sealant replacement on more than 10% of cracks or joints. Partial depth or full depth joint repairs or patch replacement. Repair faulted joints. Replace or overlay slabs with severe scaling. Bonded or unbonded concrete overlay.
1 Failed	Many wide cracks with failed sealant and grass. Extensive crack and joint spalling. Slabs extensively cracked or shattered. Many corner breaks with spalling. D-cracks with spalling. Patches in poor condition with spalling. Numerous faults over 1/2".	Extensive full depth joint repairs or slab replacements. Extensive patching and complete overlay. Complete reconstruction.

* A given pavement segment may not have all of the types of distress listed for a particular rating. It may have only one or two types.

14 Rating pavement surface condition

RATING 5

**EXCELLENT —
No maintenance required**

Rating 5 is for new pavement or for recent major concrete rehabilitation. Like-new condition. Less than 5 years old. No maintenance required.

▶
New or like-new pavement condition.

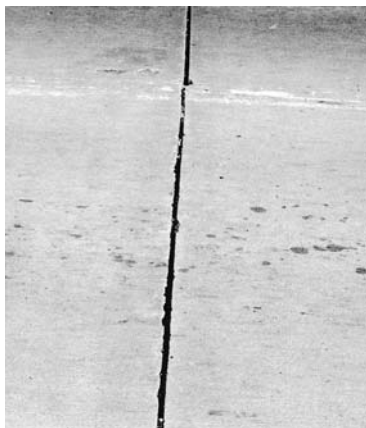


RATING 4

GOOD — Little or no maintenance required

Minor spot repair of cracks or joint sealing required. PCC pavement over 5 years old. Signs of wear: hairline or sealed cracks 1/8" wide or less, map cracking, pop-outs.

▶
Surface wear and pop-outs.



▲ **Partial loss of joint sealant.**



▲ **Map cracking, but pavement is sound.**

◀ **Isolated meander crack, tight and well sealed.**

RATING 3

FAIR — First sign of significant slab cracking, corner cracking, scaling, or faulting. Several patches. Joint sealant repair required. Isolated repair of joint or patch.

Several slabs broken into two pieces by slab cracks. Corner cracking on several slabs, 1/4" wide with no spalling. Joint sealant mostly in good condition, less than 10% needing replacement. Several patches in fair to good condition. Map cracking or scaling on 10% or less of the surface area. Slight faulting, less than 1/4", in several locations.



▲ Isolated spall at manhole.

◀ Moderate scaling.



▲ Crack breaks slab into two pieces. Well sealed.



◀ Crack breaks off large corner of slab.



▲ Severe scaling. Joint and sealant in fair condition.



◀ Crack parallel to joint. Open 1/4". No spalling.

16 Rating pavement surface condition

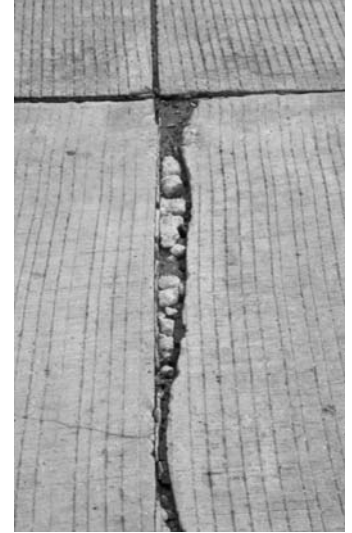
RATING 2

POOR —Cracks open 1/8", D-cracks at joints. Replace sealant, repair joints.

Many slab cracks, some breaking the slab into three or more pieces. Cracks open 1/8" or cracks with spalling. D-cracks at several joints. Sealant failure over 10% of joints. Several patches in fair to poor condition with cracks in patch and uneven surface. Faulting 1/4" to 1/2" in several locations. Severe or extensive scaling.



▲ **Open joints and cracks. Need sealant on more than 10% of joints.**



▶ **Open joint with spalling.**

▼ **Open cracks with edge spalling. Corner crack and broken corner piece.**



▶ **Corner cracks with spalling. Full depth patch required.**



▲ **Faulting of joints aggravated by heavy traffic in one direction.**



▲ **Full depth joint repair required.**



▲ **Concrete patch in poor condition.**

RATING 1

FAILED — Extensive repairs, overlay, or complete reconstruction necessary.

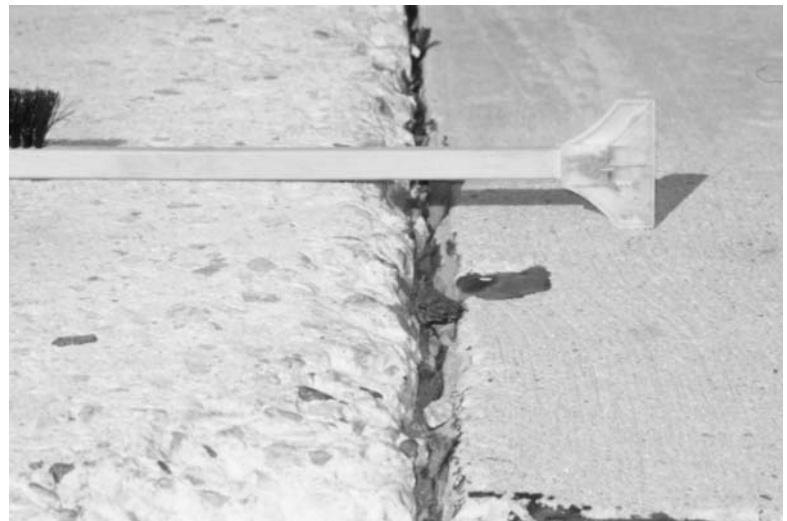
Many wide cracks with failed sealant and grass. Extensive crack and joint spalling. Slabs extensively cracked or shattered. Many corner breaks with spalling. D-cracks with spalling. Patches in poor condition with spalling. Numerous faults over 1/2". Extensive full depth joint repairs or slab replacements, extensive patching and complete overlay, or complete reconstruction needed.



▲ Multiple slab cracks, spalling and shattered slabs.

▲ Failed joint with severe spalling and pothole.

▼ Inlet with severe cracking and spalling. Full depth slab repair required.



▶ Severe joint fault and spalling.

18 Rating pavement surface condition

RATING 1

FAILED (continued)

▶
Closely spaced cracks and poor joint. Reconstruct.



▶
Severe deterioration. Requires reconstruction.



▶
Severe scaling over extensive areas. Reconstruction required.



Practical advice on rating airfield pavements

Inventory and field inspection

Most airport owners routinely observe pavement conditions as a part of their normal work. However, an actual inspection means looking at the entire system as a whole and preparing a written summary of conditions. This inspection has many benefits over casual observations. It can be helpful to compare pavement features, and ratings decisions are likely to be more consistent because the system is considered as a whole within a relatively short time.

An inspection also encourages a review of specific conditions important in pavement maintenance, such as drainage, adequate strength, and safety.

A simple written inventory is useful in making decisions where other people are involved. You do not have to trust your memory, and you can usually answer questions in more detail. Having a written record and objective information also improves your credibility with the funding agencies.

Finally, a written inventory is very useful in documenting changing pavement conditions. Without records over several years, it is more difficult to know if conditions are improving, holding their own, or declining.

A sample inventory form is shown on the inside back cover. It is very helpful to collect background information on each feature. Pavement thickness, age, and major maintenance are examples of helpful information.

Annual budgets and long range planning are best done when based on actual needs as documented with a written inventory.

Pavement features

Inventory and pavement condition data are normally organized by dividing the pavements into segments or features. A plan or aerial photo of the entire airfield is most helpful in identifying these

individual features. Runways, taxiways and aprons should be considered as separate categories. Within each category, the pavement should be separated into features with similar construction. For example, pavements with different thickness, age, or type of construction should be rated separately.

A runway may be all one feature if conditions are similar. However, if parts of the runway have significantly different construction details or condition, then separate features will make the rating more logical and useful.

Each taxiway, can be considered a separate feature. You may combine several sections of taxiway if conditions are similar.

Apron areas can be separated into features according to the areas they serve. For example, aprons serving a terminal, hangars, tie-down area, or fueling area would be separate features. Areas in different conditions may also be separated into features.

It is helpful to note the size of slabs or panels as well as the number of slabs in a feature. The overall area can be calculated and used to prepare maintenance or construction estimates.

Averaging and comparing sections

No pavement feature is entirely consistent. Also surfaces in one section may not have all of the types of distress listed for any particular rating. They may have only one or two types.

The objective is to rate the condition that represents the majority of the pavement feature. Small or isolated conditions should not influence the rating. It is useful to note these special conditions on the inventory form so this information can be used in planning specific improvement projects. For example, some spot repairs may be required.

Occasionally surface conditions vary significantly within a feature. For example, short sections of good condition may be followed by sections of poor surface conditions. In these cases, it is best to rate the feature according to the worst conditions and note the variation on the form.

The overall purpose of condition rating is to be able to compare each feature relative to all the other features in your airport pavement system. On completion you should be able to look at any two pavement features and find that the better surface has a higher rating.

Assessing drainage conditions

Moisture and poor pavement drainage are significant factors in pavement deterioration. Some assessment of drainage conditions during pavement rating is highly recommended. While you should review drainage in detail at the project level, at this stage simply include an overview drainage evaluation at the same time as you evaluate surface condition.

Consider both pavement surface drainage and lateral drainage (ditches or storm sewers). Pavement should be able to quickly shed water off the surface. Ditches should be large and deep enough to drain the pavement and remove the surface water efficiently into adjacent waterways.

Look at the crown and check for low surface areas that permit ponding. Runways and taxiways should have approximately a 1.5% cross slope or crown across the pavement. Apron areas require positive drainage and often include storm drainage systems. Maintenance of the entire drainage system is critical. Ditches, subsurface drains and outlets should be inspected

20 Practical advice on rating airfield pavements

and cleaned regularly.

A pavement's ability to carry heavy traffic loads depends on both the pavement materials (concrete slab and granular base) and the strength of the underlying soils. Most soils lose strength when they are very wet. Therefore, it is important to provide drainage to the top layer of the subgrade supporting the pavement structure.

Planning annual maintenance and repair budgets

We have found that relating a normal maintenance or rehabilitation procedure to the surface rating scheme helps

managers use the rating system.

However, an individual surface rating should not automatically dictate the final maintenance or rehabilitation technique.

Consider future traffic projections, original construction, and pavement strength since these may dictate a more comprehensive rehabilitation than the rating suggests.

Summary

Using funds most efficiently requires good planning and accurate identifi-

cation of appropriate rehabilitation projects. Assessing pavement conditions is an essential first step in this process. This pavement surface condition rating procedure has proven effective in improving decision making and using funds more efficiently. It can be used directly by airport staff and consultants or combined with additional testing and data collection in a more comprehensive pavement management system.

References

Asphalt Airfield Pavements PASER Manual, 2003, Engineering Professional Development, College of Engineering, University of Wisconsin-Madison.

Guidelines and Procedures for Maintenance of Airport Pavements, 7/14/03, Federal Aviation Administration, Advisory Circular AC:150/5380-6A.

AIRFIELD PAVEMENT INVENTORY

Airfield _____ Condition survey date _____

Done by _____

Facility (runway, taxiway, apron) _____

Feature description _____

Feature location _____

Feature area _____

Construction date _____

Pavement type: Asphalt Concrete Layer thicknesses: _____

Maintenance history _____

PASER Rating (5 = Excellent, 4 = Good, 3 = Fair, 2 = Poor, 1 = Failed)

Comments on pavement and drainage conditions _____

Recommended maintenance _____

Recommended rehabilitation _____

PASER

Concrete Airfields