

Transmission of material in this release is embargoed until
8:30 a.m. (EDT) Friday, November 4, 2011

USDL-11-1576

Technical information:

Household data: (202) 691-6378 • cpsinfo@bls.gov • www.bls.gov/cps

Establishment data: (202) 691-6555 • cesinfo@bls.gov • www.bls.gov/ces

Media contact: (202) 691-5902 • PressOffice@bls.gov

THE EMPLOYMENT SITUATION – OCTOBER 2011

Nonfarm payroll employment continued to trend up in October (+80,000), and the **unemployment rate** was little changed at 9.0 percent, the U.S. Bureau of Labor Statistics reported today. Employment in the private sector rose, with modest job growth continuing in professional and businesses services, leisure and hospitality, health care, and mining. Government employment continued to trend down.

Chart 1. Unemployment rate, seasonally adjusted, October 2009 – October 2011

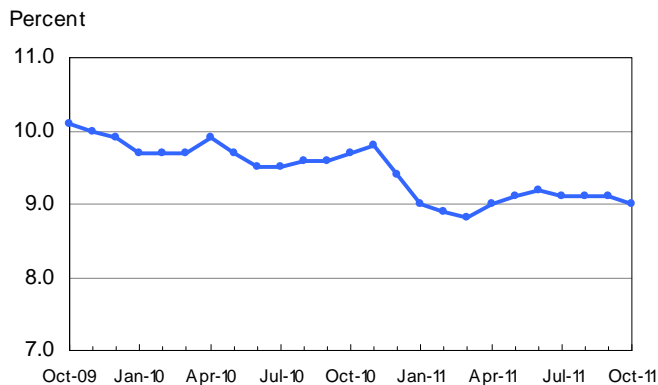
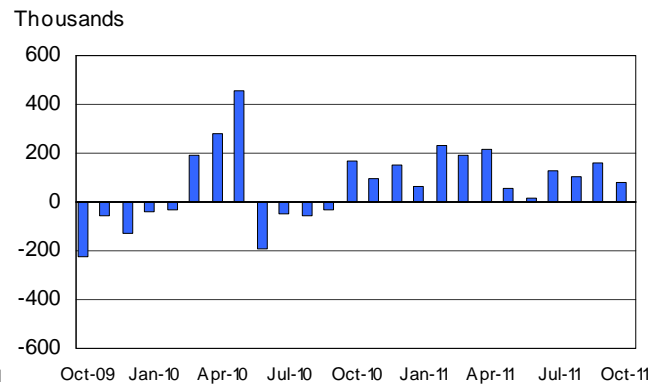


Chart 2. Nonfarm payroll employment over-the-month change, seasonally adjusted, October 2009 – October 2011



Household Survey Data

Both the number of **unemployed persons** (13.9 million) and the **unemployment rate** (9.0 percent) changed little over the month. The unemployment rate has remained in a narrow range from 9.0 to 9.2 percent since April. (See table A-1.)

Among the **major worker groups**, the unemployment rate declined for blacks (15.1 percent) in October, while the rates for adult men (8.8 percent), adult women (8.0 percent), teenagers (24.1 percent), whites (8.0 percent), and Hispanics (11.4 percent) showed little or no change. The jobless rate for Asians was 7.3 percent, not seasonally adjusted. (See tables A-1, A-2, and A-3.)

In October, the number of **long-term unemployed** (those jobless for 27 weeks and over) declined by 366,000 to 5.9 million, or 42.4 percent of total unemployment. (See table A-12.)

The **civilian labor force participation rate** remained at 64.2 percent in October, and the **employment-population ratio** was little changed at 58.4 percent. (See table A-1.)

The number of persons employed **part time for economic reasons** (sometimes referred to as involuntary part-time workers) decreased by 374,000 to 8.9 million in October. These individuals were working part time because their hours had been cut back or because they were unable to find a full-time job. (See table A-8.)

In October, 2.6 million persons were **marginally attached to the labor force**, about the same as a year earlier. (The data are not seasonally adjusted.) These individuals were not in the labor force, wanted and were available for work, and had looked for a job sometime in the prior 12 months. They were not counted as unemployed because they had not searched for work in the 4 weeks preceding the survey. (See table A-16.)

Among the marginally attached, there were 967,000 **discouraged workers** in October, a decrease of 252,000 from a year earlier. (The data are not seasonally adjusted.) Discouraged workers are persons not currently looking for work because they believe no jobs are available for them. The remaining 1.6 million persons marginally attached to the labor force in October had not searched for work in the 4 weeks preceding the survey for reasons such as school attendance or family responsibilities. (See table A-16.)

Establishment Survey Data

Total **nonfarm payroll employment** continued to trend up in October (+80,000). Over the past 12 months, payroll employment has increased by an average of 125,000 per month. In October, private-sector employment increased by 104,000, with continued job growth in professional and business services, leisure and hospitality, health care, and mining. Government employment continued to contract in October. (See table B-1.)

Employment in **professional and business services** continued to trend up in October (+32,000) and has grown by 562,000 over the past 12 months. Within the industry, there have been modest job gains in recent months in temporary help services and in management and technical consulting services.

Employment in **leisure and hospitality** edged up over the month (+22,000). Since a recent low point in January 2010, the industry has added 344,000 jobs.

Health care employment continued to expand in October 2011 (+12,000), following a gain of 45,000 in September. Offices of physicians added 8,000 jobs in October. Over the past 12 months, health care has added 313,000 jobs.

In October, **mining** employment continued to increase (+6,000); oil and gas extraction accounted for half of the increase. Since a recent low point in October 2009, mining employment has risen by 152,000.

Manufacturing employment changed little in October 2011 (+5,000) and has remained flat for 3 months. In October, a job gain in transportation equipment (+10,000) was partly offset by small losses in other manufacturing industries.

Within **retail trade**, employment increased in general merchandise stores (+10,000) and in motor vehicle and parts dealers (+6,000) in October. Retail trade has added 156,000 jobs over the past 12 months.

Construction employment declined by 20,000 in October, largely offsetting an increase of 27,000 in September; both over-the-month changes largely occurred in nonresidential construction. Employment in both residential and nonresidential construction has shown little net change in 2011.

Employment in other major private-sector industries, including **wholesale trade, transportation and warehousing, information, and financial activities**, changed little in October.

Government employment continued to trend down over the month (-24,000), with most of the October decline in the non-educational component of state government. Employment in both state government and local government has been trending down since the second half of 2008.

The **average workweek for all employees** on private nonfarm payrolls was unchanged at 34.3 hours in October. The manufacturing workweek rose by 0.2 hour to 40.5 hours, and factory overtime remained at 3.2 hours. The average workweek for **production and nonsupervisory employees** on private nonfarm payrolls edged up by 0.1 hour to 33.7 hours in October. (See tables B-2 and B-7.)

In October, **average hourly earnings for all employees** on private nonfarm payrolls increased by 5 cents, or 0.2 percent, to \$23.19. This increase followed a gain of 6 cents in September. Over the past 12 months, average hourly earnings have increased by 1.8 percent. In October, average hourly earnings of private-sector **production and nonsupervisory employees** increased by 3 cents, or 0.2 percent, to \$19.53. (See tables B-3 and B-8.)

The change in total nonfarm payroll employment for August was revised from +57,000 to +104,000, and the change for September was revised from +103,000 to +158,000.

The Employment Situation for November is scheduled to be released on Friday, December 2, 2011, at 8:30 a.m. (EST).

Administrative Changes to Household Survey

In January 2012, the Census Bureau, which conducts the household survey, will begin a year-long process of reorganizing its regional office structure. For more information on these Census Bureau changes, see www.census.gov/newsroom/pdf/General_QAs_FINAL2.pdf. Both the Census Bureau and the Bureau of Labor Statistics will monitor survey operations during the transition period. No impact on the employment and unemployment estimates from the survey is anticipated from this organizational change.

HOUSEHOLD DATA

Summary table A. Household data, seasonally adjusted

[Numbers in thousands]

Category	Oct. 2010	Aug. 2011	Sept. 2011	Oct. 2011	Change from: Sept. 2011- Oct. 2011
Employment status					
Civilian noninstitutional population.....	238,530	239,871	240,071	240,269	198
Civilian labor force.....	153,960	153,594	154,017	154,198	181
Participation rate.....	64.5	64.0	64.2	64.2	0.0
Employed.....	139,084	139,627	140,025	140,302	277
Employment-population ratio.....	58.3	58.2	58.3	58.4	0.1
Unemployed.....	14,876	13,967	13,992	13,897	-95
Unemployment rate.....	9.7	9.1	9.1	9.0	-0.1
Not in labor force.....	84,570	86,278	86,054	86,071	17
Unemployment rates					
Total, 16 years and over.....	9.7	9.1	9.1	9.0	-0.1
Adult men (20 years and over).....	9.7	8.9	8.8	8.8	0.0
Adult women (20 years and over).....	8.1	8.0	8.1	8.0	-0.1
Teenagers (16 to 19 years).....	27.1	25.4	24.6	24.1	-0.5
White.....	8.8	8.0	8.0	8.0	0.0
Black or African American.....	15.7	16.7	16.0	15.1	-0.9
Asian (not seasonally adjusted).....	7.1	7.1	7.8	7.3	-
Hispanic or Latino ethnicity.....	12.6	11.3	11.3	11.4	0.1
Total, 25 years and over.....	8.2	7.8	7.8	7.8	0.0
Less than a high school diploma.....	15.3	14.3	14.0	13.8	-0.2
High school graduates, no college.....	10.1	9.6	9.7	9.6	-0.1
Some college or associate degree.....	8.5	8.2	8.4	8.3	-0.1
Bachelor's degree and higher.....	4.7	4.3	4.2	4.4	0.2
Reason for unemployment					
Job losers and persons who completed temporary jobs.....	9,070	8,203	8,121	8,006	-115
Job leavers.....	854	963	967	1,072	105
Reentrants.....	3,498	3,532	3,504	3,400	-104
New entrants.....	1,278	1,241	1,327	1,293	-34
Duration of unemployment					
Less than 5 weeks.....	2,659	2,755	2,772	2,694	-78
5 to 14 weeks.....	3,427	3,050	2,904	3,250	346
15 to 26 weeks.....	2,500	2,239	2,086	2,048	-38
27 weeks and over.....	6,234	6,034	6,242	5,876	-366
Employed persons at work part time					
Part time for economic reasons.....	9,100	8,826	9,270	8,896	-374
Slack work or business conditions.....	6,174	5,833	5,963	5,901	-62
Could only find part-time work.....	2,564	2,736	2,852	2,631	-221
Part time for noneconomic reasons.....	18,230	18,208	18,308	18,392	84
Persons not in the labor force (not seasonally adjusted)					
Marginally attached to the labor force.....	2,602	2,575	2,511	2,555	-
Discouraged workers.....	1,219	977	1,037	967	-

- Over-the-month changes are not displayed for not seasonally adjusted data.

NOTE: Persons whose ethnicity is identified as Hispanic or Latino may be of any race. Detail for the seasonally adjusted data shown in this table will not necessarily add to totals because of the independent seasonal adjustment of the various series. Updated population controls are introduced annually with the release of January data.

ESTABLISHMENT DATA
Summary table B. Establishment data, seasonally adjusted

Category	Oct. 2010	Aug. 2011	Sept. 2011 ^P	Oct. 2011 ^P
EMPLOYMENT BY SELECTED INDUSTRY (Over-the-month change, in thousands)				
Total nonfarm.....	171	104	158	80
Total private.....	143	72	191	104
Goods-producing.....	1	-13	29	-10
Mining and logging.....	9	2	5	5
Construction.....	-2	-14	27	-20
Manufacturing.....	-6	-1	-3	5
Durable goods ¹	2	-5	2	11
Motor vehicles and parts.....	2.7	-4.8	2.0	6.2
Nondurable goods.....	-8	4	-5	-6
Private service-providing ¹	142	85	162	114
Wholesale trade.....	11.4	4.8	-6.0	8.1
Retail trade.....	26.3	2.5	13.3	17.8
Transportation and warehousing.....	3.8	6.7	2.5	9.4
Information.....	-4	-50	34	-5
Financial activities.....	1	6	-5	4
Professional and business services ¹	40	45	50	32
Temporary help services.....	27.2	22.6	21.1	15.0
Education and health services ¹	64	38	58	28
Health care and social assistance.....	38.9	32.3	46.1	16.3
Leisure and hospitality.....	-31	23	13	22
Other services.....	29	8	1	-2
Government.....	28	32	-33	-24
WOMEN AND PRODUCTION AND NONSUPERVISORY EMPLOYEES AS A PERCENT OF ALL EMPLOYEES ²				
Total nonfarm women employees.....	49.7	49.4	49.4	49.4
Total private women employees.....	48.2	47.9	47.9	47.9
Total private production and nonsupervisory employees.....	82.4	82.4	82.4	82.5
HOURS AND EARNINGS ALL EMPLOYEES				
Total private				
Average weekly hours.....	34.3	34.2	34.3	34.3
Average hourly earnings.....	\$ 22.77	\$ 23.08	\$ 23.14	\$ 23.19
Average weekly earnings.....	\$781.01	\$789.34	\$793.70	\$795.42
Index of aggregate weekly hours (2007=100) ³	92.6	93.6	94.1	94.2
Over-the-month percent change.....	0.4	-0.2	0.5	0.1
Index of aggregate weekly payrolls (2007=100) ⁴	100.5	103.0	103.8	104.1
Over-the-month percent change.....	0.7	-0.5	0.8	0.3
HOURS AND EARNINGS PRODUCTION AND NONSUPERVISORY EMPLOYEES				
Total private				
Average weekly hours.....	33.5	33.5	33.6	33.7
Average hourly earnings.....	\$ 19.23	\$ 19.47	\$ 19.50	\$ 19.53
Average weekly earnings.....	\$644.21	\$652.25	\$655.20	\$658.16
Index of aggregate weekly hours (2002=100) ³	99.4	100.8	101.3	101.7
Over-the-month percent change.....	0.2	-0.2	0.5	0.4
Index of aggregate weekly payrolls (2002=100) ⁴	127.7	131.1	132.0	132.7
Over-the-month percent change.....	0.6	-0.3	0.7	0.5
DIFFUSION INDEX (Over 1-month span) ⁵				
Total private.....	58.2	57.1	56.7	60.7
Manufacturing.....	45.1	49.4	50.0	51.9

1 Includes other industries, not shown separately.

2 Data relate to production employees in mining and logging and manufacturing, construction employees in construction, and nonsupervisory employees in the service-providing industries.

3 The indexes of aggregate weekly hours are calculated by dividing the current month's estimates of aggregate hours by the corresponding annual average aggregate hours.

4 The indexes of aggregate weekly payrolls are calculated by dividing the current month's estimates of aggregate weekly payrolls by the corresponding annual average aggregate weekly payrolls.

5 Figures are the percent of industries with employment increasing plus one-half of the industries with unchanged employment, where 50 percent indicates an equal balance between industries with increasing and decreasing employment.

Frequently Asked Questions about Employment and Unemployment Estimates

Why are there two monthly measures of employment?

The household survey and establishment survey both produce sample-based estimates of employment and both have strengths and limitations. The establishment survey employment series has a smaller margin of error on the measurement of month-to-month change than the household survey because of its much larger sample size. An over-the-month employment change of about 100,000 is statistically significant in the establishment survey, while the threshold for a statistically significant change in the household survey is about 400,000. However, the household survey has a more expansive scope than the establishment survey because it includes the self-employed, unpaid family workers, agricultural workers, and private household workers, who are excluded by the establishment survey. The household survey also provides estimates of employment for demographic groups.

Are undocumented immigrants counted in the surveys?

It is likely that both surveys include at least some undocumented immigrants. However, neither the establishment nor the household survey is designed to identify the legal status of workers. Therefore, it is not possible to determine how many are counted in either survey. The establishment survey does not collect data on the legal status of workers. The household survey does include questions which identify the foreign and native born, but it does not include questions about the legal status of the foreign born.

Why does the establishment survey have revisions?

The establishment survey revises published estimates to improve its data series by incorporating additional information that was not available at the time of the initial publication of the estimates. The establishment survey revises its initial monthly estimates twice, in the immediately succeeding 2 months, to incorporate additional sample receipts from respondents in the survey and recalculated seasonal adjustment factors. For more information on the monthly revisions, please visit www.bls.gov/ces/cesrevinfo.htm.

On an annual basis, the establishment survey incorporates a benchmark revision that re-anchors estimates to nearly complete employment counts available from unemployment insurance tax records. The benchmark helps to control for sampling and modeling errors in the estimates. For more information on the annual benchmark revision, please visit www.bls.gov/web/cesbmart.htm.

Does the establishment survey sample include small firms?

Yes; about 40 percent of the establishment survey sample is comprised of business establishments with fewer than 20 employees. The establishment survey sample is designed to maximize the reliability of the total nonfarm employment estimate; firms from all size classes and industries are appropriately sampled to achieve that goal.

Does the establishment survey account for employment from new businesses?

Yes; monthly establishment survey estimates include an adjustment to account for the net employment change generated by business births and deaths. The adjustment comes from an econometric model that forecasts the monthly net jobs impact of business births and deaths based on the actual past values of the net impact that can be observed with a lag from the Quarterly Census of Employment and Wages. The

establishment survey uses modeling rather than sampling for this purpose because the survey is not immediately able to bring new businesses into the sample. There is an unavoidable lag between the birth of a new firm and its appearance on the sampling frame and availability for selection. BLS adds new businesses to the survey twice a year.

Is the count of unemployed persons limited to just those people receiving unemployment insurance benefits?

No; the estimate of unemployment is based on a monthly sample survey of households. All persons who are without jobs and are actively seeking and available to work are included among the unemployed. (People on temporary layoff are included even if they do not actively seek work.) There is no requirement or question relating to unemployment insurance benefits in the monthly survey.

Does the official unemployment rate exclude people who have stopped looking for work?

Yes; however, there are separate estimates of persons outside the labor force who want a job, including those who have stopped looking because they believe no jobs are available (discouraged workers). In addition, alternative measures of labor underutilization (some of which include discouraged workers and other groups not officially counted as unemployed) are published each month in The Employment Situation news release.

How can unusually severe weather affect employment and hours estimates?

In the establishment survey, the reference period is the pay period that includes the 12th of the month. Unusually severe weather is more likely to have an impact on average weekly hours than on employment. Average weekly hours are estimated for paid time during the pay period, including pay for holidays, sick leave, or other time off. The impact of severe weather on hours estimates typically, but not always, results in a reduction in average weekly hours. For example, some employees may be off work for part of the pay period and not receive pay for the time missed, while some workers, such as those dealing with cleanup or repair, may work extra hours.

In order for severe weather conditions to reduce the estimate of payroll employment, employees have to be off work without pay for the entire pay period. About half of all employees in the payroll survey have a 2-week, semi-monthly, or monthly pay period. Employees who receive pay for any part of the pay period, even 1 hour, are counted in the payroll employment figures. It is not possible to quantify the effect of extreme weather on estimates of employment from the establishment survey.

In the household survey, the reference period is generally the calendar week that includes the 12th of the month. Persons who miss the entire week's work for weather-related events are counted as employed whether or not they are paid for the time off. The household survey collects data on the number of persons who usually work full time but had reduced hours, or had a job but were not at work the entire week, due to bad weather. Current and historical data are available on the household survey's most requested statistics page at <http://data.bls.gov/cgi-bin/surveymost?ln>.

Technical Note

This news release presents statistics from two major surveys, the Current Population Survey (household survey) and the Current Employment Statistics survey (establishment survey). The household survey provides information on the labor force, employment, and unemployment that appears in the "A" tables, marked HOUSEHOLD DATA. It is a sample survey of about 60,000 households conducted by the U.S. Census Bureau for the U.S. Bureau of Labor Statistics (BLS).

The establishment survey provides information on employment, hours, and earnings of employees on nonfarm payrolls; the data appear in the "B" tables, marked ESTABLISHMENT DATA. BLS collects these data each month from the payroll records of a sample of nonagricultural business establishments. The sample includes about 140,000 businesses and government agencies representing approximately 440,000 worksites and is drawn from a sampling frame of roughly 9 million unemployment insurance tax accounts. The active sample includes approximately one-third of all nonfarm payroll employees.

For both surveys, the data for a given month relate to a particular week or pay period. In the household survey, the reference period is generally the calendar week that contains the 12th day of the month. In the establishment survey, the reference period is the pay period including the 12th, which may or may not correspond directly to the calendar week.

Coverage, definitions, and differences between surveys

Household survey. The sample is selected to reflect the entire civilian noninstitutional population. Based on responses to a series of questions on work and job search activities, each person 16 years and over in a sample household is classified as employed, unemployed, or not in the labor force.

People are classified as *employed* if they did any work at all as paid employees during the reference week; worked in their own business, profession, or on their own farm; or worked without pay at least 15 hours in a family business or farm. People are also counted as employed if they were temporarily absent from their jobs because of illness, bad weather, vacation, labor-management disputes, or personal reasons.

People are classified as *unemployed* if they meet all of the following criteria: they had no employment during the reference week; they were available for work at that time; and they made specific efforts to find employment sometime during the 4-week period ending with the reference week. Persons laid off from a job and expecting recall need not be looking for work to be counted as unemployed. The unemployment data derived from the household survey in no way depend upon the eligibility for or receipt of unemployment insurance benefits.

The *civilian labor force* is the sum of employed and

unemployed persons. Those not classified as employed or unemployed are *not in the labor force*. The *unemployment rate* is the number unemployed as a percent of the labor force. The *labor force participation rate* is the labor force as a percent of the population, and the *employment-population ratio* is the employed as a percent of the population. Additional information about the household survey can be found at www.bls.gov/cps/documentation.htm.

Establishment survey. The sample establishments are drawn from private nonfarm businesses such as factories, offices, and stores, as well as from federal, state, and local government entities. *Employees on nonfarm payrolls* are those who received pay for any part of the reference pay period, including persons on paid leave. Persons are counted in each job they hold. *Hours and earnings* data are produced for the private sector for all employees and for production and nonsupervisory employees. *Production and nonsupervisory employees* are defined as production and related employees in manufacturing and mining and logging, construction workers in construction, and non-supervisory employees in private service-providing industries.

Industries are classified on the basis of an establishment's principal activity in accordance with the 2007 version of the North American Industry Classification System. Additional information about the establishment survey can be found at www.bls.gov/ces/#technical.

Differences in employment estimates. The numerous conceptual and methodological differences between the household and establishment surveys result in important distinctions in the employment estimates derived from the surveys. Among these are:

- The household survey includes agricultural workers, the self-employed, unpaid family workers, and private household workers among the employed. These groups are excluded from the establishment survey.
- The household survey includes people on unpaid leave among the employed. The establishment survey does not.
- The household survey is limited to workers 16 years of age and older. The establishment survey is not limited by age.
- The household survey has no duplication of individuals, because individuals are counted only once, even if they hold more than one job. In the establishment survey, employees working at more than one job and thus appearing on more than one payroll are counted separately for each appearance.

Seasonal adjustment

Over the course of a year, the size of the nation's labor force and the levels of employment and unemployment undergo regularly occurring fluctuations. These events may result from seasonal changes in weather, major holidays, and the opening and closing of schools. The effect of such seasonal variation can be very large.

Because these seasonal events follow a more or less regular pattern each year, their influence on the level of a series can be tempered by adjusting for regular seasonal variation. These adjustments make nonseasonal developments, such as declines in employment or increases in the participation of women in the labor force, easier to spot. For example, in the household survey, the large number of youth entering the labor force each June is likely to obscure any other changes that have taken place relative to May, making it difficult to determine if the level of economic activity has risen or declined. Similarly, in the establishment survey, payroll employment in education declines by about 20 percent at the end of the spring term and later rises with the start of the fall term, obscuring the underlying employment trends in the industry. Because seasonal employment changes at the end and beginning of the school year can be estimated, the statistics can be adjusted to make underlying employment patterns more discernable. The seasonally adjusted figures provide a more useful tool with which to analyze changes in month-to-month economic activity.

Many seasonally adjusted series are independently adjusted in both the household and establishment surveys. However, the adjusted series for many major estimates, such as total payroll employment, employment in most major sectors, total employment, and unemployment are computed by aggregating independently adjusted component series. For example, total unemployment is derived by summing the adjusted series for four major age-sex components; this differs from the unemployment estimate that would be obtained by directly adjusting the total or by combining the duration, reasons, or more detailed age categories.

For both the household and establishment surveys, a concurrent seasonal adjustment methodology is used in which new seasonal factors are calculated each month using all relevant data, up to and including the data for the current month. In the household survey, new seasonal factors are used to adjust only the current month's data. In the establishment survey, however, new seasonal factors are used each month to adjust the three most recent monthly estimates. The prior 2 months are routinely revised to incorporate additional sample reports and recalculated seasonal adjustment factors. In both surveys, 5-year revisions to historical data are made once a year.

Reliability of the estimates

Statistics based on the household and establishment surveys are subject to both sampling and nonsampling error. When a sample rather than the entire population is

surveyed, there is a chance that the sample estimates may differ from the "true" population values they represent. The exact difference, or *sampling error*, varies depending on the particular sample selected, and this variability is measured by the standard error of the estimate. There is about a 90-percent chance, or level of confidence, that an estimate based on a sample will differ by no more than 1.6 standard errors from the "true" population value because of sampling error. BLS analyses are generally conducted at the 90-percent level of confidence.

For example, the confidence interval for the monthly change in total nonfarm employment from the establishment survey is on the order of plus or minus 100,000. Suppose the estimate of nonfarm employment increases by 50,000 from one month to the next. The 90-percent confidence interval on the monthly change would range from -50,000 to +150,000 (50,000 +/- 100,000). These figures do not mean that the sample results are off by these magnitudes, but rather that there is about a 90-percent chance that the "true" over-the-month change lies within this interval. Since this range includes values of less than zero, we could not say with confidence that nonfarm employment had, in fact, increased that month. If, however, the reported nonfarm employment rise was 250,000, then all of the values within the 90-percent confidence interval would be greater than zero. In this case, it is likely (at least a 90-percent chance) that nonfarm employment had, in fact, risen that month. At an unemployment rate of around 5.5 percent, the 90-percent confidence interval for the monthly change in unemployment as measured by the household survey is about +/- 280,000, and for the monthly change in the unemployment rate it is about +/- 0.19 percentage point.

In general, estimates involving many individuals or establishments have lower standard errors (relative to the size of the estimate) than estimates which are based on a small number of observations. The precision of estimates also is improved when the data are cumulated over time, such as for quarterly and annual averages.

The household and establishment surveys are also affected by *nonsampling error*, which can occur for many reasons, including the failure to sample a segment of the population, inability to obtain information for all respondents in the sample, inability or unwillingness of respondents to provide correct information on a timely basis, mistakes made by respondents, and errors made in the collection or processing of the data.

For example, in the establishment survey, estimates for the most recent 2 months are based on incomplete returns; for this reason, these estimates are labeled preliminary in the tables. It is only after two successive revisions to a monthly estimate, when nearly all sample reports have been received, that the estimate is considered final.

Another major source of nonsampling error in the establishment survey is the inability to capture, on a timely basis, employment generated by new firms. To correct for this systematic underestimation of employment growth, an estimation procedure with two components is used to account for business births. The first component excludes

employment losses from business deaths from sample-based estimation in order to offset the missing employment gains from business births. This is incorporated into the sample-based estimation procedure by simply not reflecting sample units going out of business, but imputing to them the same employment trend as the other firms in the sample. This procedure accounts for most of the net birth/death employment.

The second component is an ARIMA time series model designed to estimate the residual net birth/death employment not accounted for by the imputation. The historical time series used to create and test the ARIMA model was derived from the unemployment insurance universe micro-level database, and reflects the actual residual net of births and deaths over the past 5 years.

The sample-based estimates from the establishment survey are adjusted once a year (on a lagged basis) to

universe counts of payroll employment obtained from administrative records of the unemployment insurance program. The difference between the March sample-based employment estimates and the March universe counts is known as a benchmark revision, and serves as a rough proxy for total survey error. The new benchmarks also incorporate changes in the classification of industries. Over the past decade, absolute benchmark revisions for total nonfarm employment have averaged 0.3 percent, with a range from -0.7 to 0.6 percent.

Other information

Information in this release will be made available to sensory impaired individuals upon request. Voice phone: (202) 691-5200; Federal Relay Service: (800) 877-8339.

HOUSEHOLD DATA

Table A-1. Employment status of the civilian population by sex and age

[Numbers in thousands]

Employment status, sex, and age	Not seasonally adjusted			Seasonally adjusted ¹					
	Oct. 2010	Sept. 2011	Oct. 2011	Oct. 2010	June 2011	July 2011	Aug. 2011	Sept. 2011	Oct. 2011
TOTAL									
Civilian noninstitutional population.....	238,530	240,071	240,269	238,530	239,489	239,671	239,871	240,071	240,269
Civilian labor force.....	153,652	154,022	154,088	153,960	153,421	153,228	153,594	154,017	154,198
Participation rate.....	64.4	64.2	64.1	64.5	64.1	63.9	64.0	64.2	64.2
Employed.....	139,749	140,502	140,987	139,084	139,334	139,296	139,627	140,025	140,302
Employment-population ratio.....	58.6	58.5	58.7	58.3	58.2	58.1	58.2	58.3	58.4
Unemployed.....	13,903	13,520	13,102	14,876	14,087	13,931	13,967	13,992	13,897
Unemployment rate.....	9.0	8.8	8.5	9.7	9.2	9.1	9.1	9.1	9.0
Not in labor force.....	84,878	86,049	86,181	84,570	86,069	86,443	86,278	86,054	86,071
Persons who currently want a job.....	5,867	5,929	5,969	6,279	6,537	6,575	6,493	6,241	6,403
Men, 16 years and over									
Civilian noninstitutional population.....	115,542	116,559	116,664	115,542	116,250	116,347	116,453	116,559	116,664
Civilian labor force.....	81,675	82,011	82,081	82,000	81,966	81,751	81,975	82,123	82,252
Participation rate.....	70.7	70.4	70.4	71.0	70.5	70.3	70.4	70.5	70.5
Employed.....	73,970	74,821	74,931	73,470	74,014	73,908	74,122	74,364	74,442
Employment-population ratio.....	64.0	64.2	64.2	63.6	63.7	63.5	63.6	63.8	63.8
Unemployed.....	7,705	7,189	7,151	8,530	7,952	7,844	7,853	7,758	7,809
Unemployment rate.....	9.4	8.8	8.7	10.4	9.7	9.6	9.6	9.4	9.5
Not in labor force.....	33,867	34,549	34,583	33,542	34,284	34,596	34,478	34,436	34,413
Men, 20 years and over									
Civilian noninstitutional population.....	107,007	107,994	108,104	107,007	107,668	107,773	107,884	107,994	108,104
Civilian labor force.....	78,859	79,224	79,329	79,016	79,104	78,906	79,043	79,227	79,349
Participation rate.....	73.7	73.4	73.4	73.8	73.5	73.2	73.3	73.4	73.4
Employed.....	71,960	72,796	72,924	71,365	71,937	71,836	72,015	72,276	72,336
Employment-population ratio.....	67.2	67.4	67.5	66.7	66.8	66.7	66.8	66.9	66.9
Unemployed.....	6,899	6,427	6,405	7,651	7,167	7,070	7,028	6,952	7,013
Unemployment rate.....	8.7	8.1	8.1	9.7	9.1	9.0	8.9	8.8	8.8
Not in labor force.....	28,147	28,771	28,776	27,991	28,564	28,867	28,841	28,767	28,756
Women, 16 years and over									
Civilian noninstitutional population.....	122,988	123,512	123,605	122,988	123,239	123,324	123,418	123,512	123,605
Civilian labor force.....	71,977	72,011	72,007	71,960	71,455	71,476	71,619	71,894	71,947
Participation rate.....	58.5	58.3	58.3	58.5	58.0	58.0	58.0	58.2	58.2
Employed.....	65,779	65,680	66,056	65,613	65,320	65,388	65,505	65,661	65,859
Employment-population ratio.....	53.5	53.2	53.4	53.3	53.0	53.0	53.1	53.2	53.3
Unemployed.....	6,198	6,331	5,951	6,346	6,134	6,088	6,114	6,233	6,087
Unemployment rate.....	8.6	8.8	8.3	8.8	8.6	8.5	8.5	8.7	8.5
Not in labor force.....	51,011	51,501	51,598	51,028	51,784	51,847	51,800	51,618	51,659
Women, 20 years and over									
Civilian noninstitutional population.....	114,704	115,338	115,437	114,704	115,045	115,138	115,238	115,338	115,437
Civilian labor force.....	69,131	69,266	69,208	69,018	68,618	68,666	68,771	69,019	69,060
Participation rate.....	60.3	60.1	60.0	60.2	59.6	59.6	59.7	59.8	59.8
Employed.....	63,645	63,529	63,837	63,400	63,098	63,216	63,300	63,398	63,569
Employment-population ratio.....	55.5	55.1	55.3	55.3	54.8	54.9	54.9	55.0	55.1
Unemployed.....	5,487	5,737	5,371	5,618	5,520	5,450	5,472	5,622	5,491
Unemployment rate.....	7.9	8.3	7.8	8.1	8.0	7.9	8.0	8.1	8.0
Not in labor force.....	45,573	46,072	46,229	45,687	46,427	46,472	46,467	46,318	46,377
Both sexes, 16 to 19 years									
Civilian noninstitutional population.....	16,819	16,739	16,728	16,819	16,776	16,760	16,749	16,739	16,728
Civilian labor force.....	5,661	5,532	5,552	5,927	5,698	5,656	5,779	5,770	5,790
Participation rate.....	33.7	33.1	33.2	35.2	34.0	33.7	34.5	34.5	34.6
Employed.....	4,144	4,177	4,226	4,319	4,299	4,244	4,312	4,352	4,397
Employment-population ratio.....	24.6	25.0	25.3	25.7	25.6	25.3	25.7	26.0	26.3
Unemployed.....	1,517	1,356	1,326	1,607	1,399	1,412	1,467	1,418	1,393
Unemployment rate.....	26.8	24.5	23.9	27.1	24.5	25.0	25.4	24.6	24.1
Not in labor force.....	11,158	11,206	11,176	10,893	11,078	11,104	10,970	10,969	10,938

¹ The population figures are not adjusted for seasonal variation; therefore, identical numbers appear in the unadjusted and seasonally adjusted columns.

NOTE: Updated population controls are introduced annually with the release of January data.

HOUSEHOLD DATA

Table A-2. Employment status of the civilian population by race, sex, and age

[Numbers in thousands]

Employment status, race, sex, and age	Not seasonally adjusted			Seasonally adjusted ¹					
	Oct. 2010	Sept. 2011	Oct. 2011	Oct. 2010	June 2011	July 2011	Aug. 2011	Sept. 2011	Oct. 2011
WHITE									
Civilian noninstitutional population.....	192,527	193,365	193,493	192,527	192,989	193,106	193,236	193,365	193,493
Civilian labor force.....	124,749	124,812	124,870	124,914	124,493	124,503	124,563	124,702	124,870
Participation rate.....	64.8	64.5	64.5	64.9	64.5	64.5	64.5	64.5	64.5
Employed.....	114,588	115,266	115,421	113,975	114,358	114,420	114,631	114,751	114,849
Employment-population ratio.....	59.5	59.6	59.7	59.2	59.3	59.3	59.3	59.3	59.4
Unemployed.....	10,161	9,545	9,449	10,940	10,135	10,083	9,932	9,951	10,021
Unemployment rate.....	8.1	7.6	7.6	8.8	8.1	8.1	8.0	8.0	8.0
Not in labor force.....	67,778	68,553	68,623	67,612	68,496	68,603	68,673	68,662	68,623
Men, 20 years and over									
Civilian labor force.....	65,066	65,290	65,315	65,215	65,203	65,099	65,105	65,269	65,333
Participation rate.....	74.1	73.9	73.9	74.3	74.0	73.8	73.7	73.9	73.9
Employed.....	59,872	60,648	60,608	59,425	59,943	59,929	60,108	60,235	60,187
Employment-population ratio.....	68.2	68.6	68.5	67.7	68.0	67.9	68.1	68.2	68.1
Unemployed.....	5,194	4,642	4,707	5,790	5,261	5,170	4,997	5,034	5,146
Unemployment rate.....	8.0	7.1	7.2	8.9	8.1	7.9	7.7	7.7	7.9
Women, 20 years and over									
Civilian labor force.....	55,076	54,949	54,952	54,846	54,633	54,696	54,655	54,706	54,727
Participation rate.....	59.9	59.6	59.6	59.7	59.4	59.4	59.3	59.3	59.3
Employed.....	51,185	51,002	51,217	50,835	50,775	50,866	50,826	50,795	50,899
Employment-population ratio.....	55.7	55.3	55.5	55.3	55.2	55.2	55.2	55.1	55.2
Unemployed.....	3,891	3,947	3,735	4,012	3,858	3,830	3,828	3,911	3,828
Unemployment rate.....	7.1	7.2	6.8	7.3	7.1	7.0	7.0	7.1	7.0
Both sexes, 16 to 19 years									
Civilian labor force.....	4,607	4,573	4,604	4,853	4,657	4,708	4,803	4,728	4,810
Participation rate.....	35.9	35.8	36.0	37.8	36.3	36.8	37.5	37.0	37.6
Employed.....	3,531	3,616	3,596	3,715	3,640	3,625	3,697	3,722	3,763
Employment-population ratio.....	27.5	28.3	28.1	29.0	28.4	28.3	28.9	29.1	29.4
Unemployed.....	1,076	956	1,008	1,138	1,017	1,083	1,106	1,006	1,047
Unemployment rate.....	23.4	20.9	21.9	23.4	21.8	23.0	23.0	21.3	21.8
BLACK OR AFRICAN AMERICAN									
Civilian noninstitutional population.....	28,831	29,193	29,228	28,831	29,093	29,123	29,158	29,193	29,228
Civilian labor force.....	17,913	18,051	18,047	17,946	17,733	17,582	17,930	18,103	18,052
Participation rate.....	62.1	61.8	61.7	62.2	61.0	60.4	61.5	62.0	61.8
Employed.....	15,199	15,186	15,471	15,127	14,855	14,786	14,941	15,209	15,332
Employment-population ratio.....	52.7	52.0	52.9	52.5	51.1	50.8	51.2	52.1	52.5
Unemployed.....	2,715	2,865	2,576	2,818	2,877	2,796	2,989	2,893	2,720
Unemployment rate.....	15.2	15.9	14.3	15.7	16.2	15.9	16.7	16.0	15.1
Not in labor force.....	10,918	11,142	11,181	10,885	11,360	11,541	11,229	11,091	11,176
Men, 20 years and over									
Civilian labor force.....	8,076	8,108	8,182	8,072	8,111	8,044	8,151	8,146	8,176
Participation rate.....	69.0	68.0	68.5	69.0	68.3	67.7	68.4	68.3	68.4
Employed.....	6,837	6,830	6,960	6,763	6,736	6,680	6,682	6,774	6,855
Employment-population ratio.....	58.5	57.3	58.3	57.8	56.7	56.2	56.1	56.8	57.4
Unemployed.....	1,239	1,279	1,221	1,309	1,375	1,364	1,469	1,372	1,321
Unemployment rate.....	15.3	15.8	14.9	16.2	17.0	17.0	18.0	16.8	16.2
Women, 20 years and over									
Civilian labor force.....	9,158	9,348	9,254	9,173	8,953	8,945	9,153	9,291	9,252
Participation rate.....	63.2	63.7	62.9	63.3	61.2	61.1	62.4	63.3	62.9
Employed.....	7,996	8,027	8,116	7,998	7,718	7,745	7,923	8,064	8,089
Employment-population ratio.....	55.2	54.7	55.2	55.2	52.8	52.9	54.0	54.9	55.0
Unemployed.....	1,162	1,320	1,138	1,176	1,235	1,200	1,230	1,227	1,164
Unemployment rate.....	12.7	14.1	12.3	12.8	13.8	13.4	13.4	13.2	12.6
Both sexes, 16 to 19 years									
Civilian labor force.....	680	595	611	700	669	594	626	665	624
Participation rate.....	25.7	23.1	23.7	26.5	25.8	22.9	24.2	25.8	24.2
Employed.....	365	329	394	366	402	361	335	371	388
Employment-population ratio.....	13.8	12.7	15.3	13.9	15.5	13.9	13.0	14.4	15.1
Unemployed.....	314	266	216	334	267	233	291	294	236
Unemployment rate.....	46.2	44.8	35.4	47.7	39.9	39.2	46.5	44.2	37.8
ASIAN									
Civilian noninstitutional population.....	11,306	11,523	11,614	-	-	-	-	-	-

See footnotes at end of table.

HOUSEHOLD DATA

Table A-2. Employment status of the civilian population by race, sex, and age — Continued

[Numbers in thousands]

Employment status, race, sex, and age	Not seasonally adjusted			Seasonally adjusted ¹					
	Oct. 2010	Sept. 2011	Oct. 2011	Oct. 2010	June 2011	July 2011	Aug. 2011	Sept. 2011	Oct. 2011
Civilian labor force.....	7,317	7,360	7,462	-	-	-	-	-	-
Participation rate.....	64.7	63.9	64.3	-	-	-	-	-	-
Employed.....	6,798	6,784	6,916	-	-	-	-	-	-
Employment-population ratio.....	60.1	58.9	59.6	-	-	-	-	-	-
Unemployed.....	519	577	546	-	-	-	-	-	-
Unemployment rate.....	7.1	7.8	7.3	-	-	-	-	-	-
Not in labor force.....	3,988	4,162	4,151	-	-	-	-	-	-

¹ The population figures are not adjusted for seasonal variation; therefore, identical numbers appear in the unadjusted and seasonally adjusted columns.

- Data not available.

NOTE: Estimates for the above race groups will not sum to totals shown in table A-1 because data are not presented for all races. Updated population controls are introduced annually with the release of January data.

HOUSEHOLD DATA

Table A-3. Employment status of the Hispanic or Latino population by sex and age

[Numbers in thousands]

Employment status, sex, and age	Not seasonally adjusted			Seasonally adjusted ¹					
	Oct. 2010	Sept. 2011	Oct. 2011	Oct. 2010	June 2011	July 2011	Aug. 2011	Sept. 2011	Oct. 2011
HISPANIC OR LATINO ETHNICITY									
Civilian noninstitutional population.....	34,014	34,640	34,724	34,014	34,391	34,470	34,555	34,640	34,724
Civilian labor force.....	22,784	23,058	23,313	22,814	22,816	22,741	22,917	22,993	23,259
Participation rate.....	67.0	66.6	67.1	67.1	66.3	66.0	66.3	66.4	67.0
Employed.....	20,051	20,569	20,757	19,936	20,164	20,171	20,332	20,389	20,600
Employment-population ratio.....	58.9	59.4	59.8	58.6	58.6	58.5	58.8	58.9	59.3
Unemployed.....	2,733	2,488	2,555	2,878	2,653	2,570	2,585	2,604	2,660
Unemployment rate.....	12.0	10.8	11.0	12.6	11.6	11.3	11.3	11.3	11.4
Not in labor force.....	11,230	11,582	11,412	11,201	11,574	11,728	11,638	11,647	11,465
Men, 20 years and over									
Civilian labor force.....	12,964	13,112	13,182	-	-	-	-	-	-
Participation rate.....	81.8	81.7	82.0	-	-	-	-	-	-
Employed.....	11,566	11,887	11,891	-	-	-	-	-	-
Employment-population ratio.....	73.0	74.1	73.9	-	-	-	-	-	-
Unemployed.....	1,398	1,225	1,291	-	-	-	-	-	-
Unemployment rate.....	10.8	9.3	9.8	-	-	-	-	-	-
Women, 20 years and over									
Civilian labor force.....	8,867	9,000	9,141	-	-	-	-	-	-
Participation rate.....	59.5	59.3	60.1	-	-	-	-	-	-
Employed.....	7,833	7,993	8,183	-	-	-	-	-	-
Employment-population ratio.....	52.5	52.7	53.8	-	-	-	-	-	-
Unemployed.....	1,034	1,007	958	-	-	-	-	-	-
Unemployment rate.....	11.7	11.2	10.5	-	-	-	-	-	-
Both sexes, 16 to 19 years									
Civilian labor force.....	953	946	990	-	-	-	-	-	-
Participation rate.....	29.3	27.7	28.9	-	-	-	-	-	-
Employed.....	651	689	683	-	-	-	-	-	-
Employment-population ratio.....	20.0	20.2	19.9	-	-	-	-	-	-
Unemployed.....	301	257	307	-	-	-	-	-	-
Unemployment rate.....	31.6	27.1	31.0	-	-	-	-	-	-

¹ The population figures are not adjusted for seasonal variation; therefore, identical numbers appear in the unadjusted and seasonally adjusted columns.

- Data not available.

NOTE: Persons whose ethnicity is identified as Hispanic or Latino may be of any race. Updated population controls are introduced annually with the release of January data.

HOUSEHOLD DATA

Table A-4. Employment status of the civilian population 25 years and over by educational attainment

[Numbers in thousands]

Educational attainment	Not seasonally adjusted			Seasonally adjusted					
	Oct. 2010	Sept. 2011	Oct. 2011	Oct. 2010	June 2011	July 2011	Aug. 2011	Sept. 2011	Oct. 2011
Less than a high school diploma									
Civilian labor force.....	11,519	11,840	11,570	11,800	11,392	11,704	11,664	11,738	11,768
Participation rate.....	45.9	46.9	46.6	47.0	45.0	46.9	46.7	46.5	47.4
Employed.....	9,908	10,303	10,105	9,995	9,768	9,952	10,002	10,092	10,141
Employment-population ratio.....	39.4	40.8	40.7	39.8	38.6	39.9	40.0	40.0	40.8
Unemployed.....	1,611	1,536	1,465	1,805	1,624	1,752	1,663	1,646	1,628
Unemployment rate.....	14.0	13.0	12.7	15.3	14.3	15.0	14.3	14.0	13.8
High school graduates, no college¹									
Civilian labor force.....	37,638	37,210	37,140	38,051	37,612	37,505	36,956	37,319	37,437
Participation rate.....	60.9	60.4	60.1	61.6	60.6	60.6	60.0	60.5	60.6
Employed.....	34,186	33,841	33,882	34,225	33,836	34,006	33,425	33,686	33,841
Employment-population ratio.....	55.3	54.9	54.8	55.4	54.5	54.9	54.3	54.7	54.8
Unemployed.....	3,452	3,369	3,258	3,826	3,775	3,499	3,531	3,632	3,596
Unemployment rate.....	9.2	9.1	8.8	10.1	10.0	9.3	9.6	9.7	9.6
Some college or associate degree									
Civilian labor force.....	37,445	37,172	37,114	37,120	36,786	36,686	37,013	37,164	36,895
Participation rate.....	70.6	69.5	69.4	70.0	69.8	68.9	69.2	69.5	69.0
Employed.....	34,417	34,072	34,119	33,972	33,708	33,657	33,975	34,031	33,826
Employment-population ratio.....	64.9	63.7	63.8	64.0	63.9	63.2	63.5	63.7	63.3
Unemployed.....	3,028	3,101	2,995	3,148	3,079	3,028	3,038	3,133	3,069
Unemployment rate.....	8.1	8.3	8.1	8.5	8.4	8.3	8.2	8.4	8.3
Bachelor's degree and higher²									
Civilian labor force.....	46,451	47,021	47,346	46,132	46,963	46,680	46,813	46,915	47,008
Participation rate.....	76.6	76.4	76.4	76.1	76.8	76.1	76.0	76.2	75.8
Employed.....	44,370	45,048	45,348	43,971	44,894	44,677	44,808	44,931	44,951
Employment-population ratio.....	73.2	73.2	73.1	72.6	73.4	72.9	72.7	73.0	72.5
Unemployed.....	2,081	1,973	1,998	2,161	2,069	2,003	2,005	1,985	2,058
Unemployment rate.....	4.5	4.2	4.2	4.7	4.4	4.3	4.3	4.2	4.4

1 Includes persons with a high school diploma or equivalent.

2 Includes persons with bachelor's, master's, professional, and doctoral degrees.

NOTE: Updated population controls are introduced annually with the release of January data.

HOUSEHOLD DATA

Table A-5. Employment status of the civilian population 18 years and over by veteran status, period of service, and sex, not seasonally adjusted

[Numbers in thousands]

Employment status, veteran status, and period of service	Total		Men		Women	
	Oct. 2010	Oct. 2011	Oct. 2010	Oct. 2011	Oct. 2010	Oct. 2011
VETERANS, 18 years and over						
Civilian noninstitutional population.....	21,896	21,496	20,105	19,692	1,791	1,804
Civilian labor force.....	11,609	11,209	10,517	10,082	1,092	1,128
Participation rate.....	53.0	52.1	52.3	51.2	61.0	62.5
Employed.....	10,646	10,350	9,640	9,308	1,007	1,042
Employment-population ratio.....	48.6	48.1	47.9	47.3	56.2	57.8
Unemployed.....	962	859	877	774	85	85
Unemployment rate.....	8.3	7.7	8.3	7.7	7.8	7.6
Not in labor force.....	10,287	10,287	9,588	9,610	699	676
Gulf War-era II veterans						
Civilian noninstitutional population.....	2,321	2,405	1,902	2,036	419	369
Civilian labor force.....	1,900	1,980	1,612	1,715	289	265
Participation rate.....	81.9	82.3	84.8	84.2	68.8	71.9
Employed.....	1,699	1,740	1,445	1,503	254	236
Employment-population ratio.....	73.2	72.3	76.0	73.8	60.7	64.1
Unemployed.....	201	240	167	211	34	29
Unemployment rate.....	10.6	12.1	10.4	12.3	11.9	10.9
Not in labor force.....	420	425	290	322	131	103
Gulf War-era I veterans						
Civilian noninstitutional population.....	2,816	2,941	2,401	2,469	415	472
Civilian labor force.....	2,448	2,489	2,127	2,127	321	361
Participation rate.....	86.9	84.6	88.6	86.2	77.3	76.5
Employed.....	2,265	2,343	1,973	2,004	292	339
Employment-population ratio.....	80.4	79.7	82.2	81.2	70.3	71.8
Unemployed.....	183	146	154	124	29	22
Unemployment rate.....	7.5	5.9	7.3	5.8	9.0	6.2
Not in labor force.....	368	453	274	342	94	111
World War II, Korean War, and Vietnam-era veterans						
Civilian noninstitutional population.....	10,900	10,279	10,544	9,955	356	324
Civilian labor force.....	3,947	3,329	3,835	3,239	112	90
Participation rate.....	36.2	32.4	36.4	32.5	31.3	27.8
Employed.....	3,608	3,088	3,503	3,005	105	83
Employment-population ratio.....	33.1	30.0	33.2	30.2	29.4	25.6
Unemployed.....	339	241	332	234	7	7
Unemployment rate.....	8.6	7.2	8.7	7.2	6.1	7.9
Not in labor force.....	6,953	6,951	6,708	6,716	244	234
Veterans of other service periods						
Civilian noninstitutional population.....	5,860	5,870	5,259	5,232	601	639
Civilian labor force.....	3,314	3,412	2,943	3,001	371	411
Participation rate.....	56.6	58.1	56.0	57.4	61.7	64.3
Employed.....	3,075	3,180	2,719	2,796	355	384
Employment-population ratio.....	52.5	54.2	51.7	53.4	59.2	60.1
Unemployed.....	239	232	223	205	15	27
Unemployment rate.....	7.2	6.8	7.6	6.8	4.2	6.6
Not in labor force.....	2,546	2,458	2,316	2,231	230	228
NONVETERANS, 18 years and over						
Civilian noninstitutional population.....	207,459	209,934	90,791	92,437	116,669	117,497
Civilian labor force.....	140,044	140,986	70,220	71,148	69,823	69,838
Participation rate.....	67.5	67.2	77.3	77.0	59.8	59.4
Employed.....	127,693	129,190	63,707	64,997	63,986	64,193
Employment-population ratio.....	61.6	61.5	70.2	70.3	54.8	54.6
Unemployed.....	12,350	11,796	6,513	6,151	5,837	5,645
Unemployment rate.....	8.8	8.4	9.3	8.6	8.4	8.1
Not in labor force.....	67,416	68,949	20,570	21,289	46,846	47,659

NOTE: Veterans served on active duty in the U.S. Armed Forces and were not on active duty at the time of the survey. Nonveterans never served on active duty in the U.S. Armed Forces. Veterans could have served anywhere in the world during these periods of service: Gulf War era II (September 2001-present), Gulf War era I (August 1990-August 2001), Vietnam era (August 1964-April 1975), Korean War (July 1950-January 1955), World War II (December 1941-December 1946), and other service periods (all other time periods). Veterans who served in more than one wartime period are classified only in the most recent one. Veterans who served during one of the selected wartime periods and another period are classified only in the wartime period. Updated population controls are introduced annually with the release of January data.

HOUSEHOLD DATA

Table A-6. Employment status of the civilian population by sex, age, and disability status, not seasonally adjusted

[Numbers in thousands]

Employment status, sex, and age	Persons with a disability		Persons with no disability	
	Oct. 2010	Oct. 2011	Oct. 2010	Oct. 2011
TOTAL, 16 years and over				
Civilian noninstitutional population.....	26,545	27,214	211,986	213,055
Civilian labor force.....	5,682	5,802	147,970	148,286
Participation rate.....	21.4	21.3	69.8	69.6
Employed.....	4,842	5,037	134,907	135,949
Employment-population ratio.....	18.2	18.5	63.6	63.8
Unemployed.....	840	765	13,063	12,337
Unemployment rate.....	14.8	13.2	8.8	8.3
Not in labor force.....	20,863	21,412	64,015	64,769
Men, 16 to 64 years				
Civilian labor force.....	2,643	2,649	75,282	75,325
Participation rate.....	36.1	34.9	82.4	82.4
Employed.....	2,204	2,262	68,269	68,806
Employment-population ratio.....	30.1	29.8	74.7	75.2
Unemployed.....	439	387	7,012	6,519
Unemployment rate.....	16.6	14.6	9.3	8.7
Not in labor force.....	4,668	4,938	16,080	16,114
Women, 16 to 64 years				
Civilian labor force.....	2,262	2,257	66,634	66,490
Participation rate.....	30.8	30.6	71.2	70.9
Employed.....	1,924	1,960	60,931	61,099
Employment-population ratio.....	26.2	26.6	65.1	65.1
Unemployed.....	337	297	5,703	5,391
Unemployment rate.....	14.9	13.2	8.6	8.1
Not in labor force.....	5,090	5,114	26,966	27,337
Both sexes, 65 years and over				
Civilian labor force.....	777	896	6,054	6,471
Participation rate.....	6.5	7.3	22.4	23.3
Employed.....	714	815	5,706	6,044
Employment-population ratio.....	6.0	6.7	21.1	21.7
Unemployed.....	64	80	348	427
Unemployment rate.....	8.2	9.0	5.8	6.6
Not in labor force.....	11,105	11,360	20,969	21,318

NOTE: A person with a disability has at least one of the following conditions: is deaf or has serious difficulty hearing; is blind or has serious difficulty seeing even when wearing glasses; has serious difficulty concentrating, remembering, or making decisions because of a physical, mental, or emotional condition; has serious difficulty walking or climbing stairs; has difficulty dressing or bathing; or has difficulty doing errands alone such as visiting a doctor's office or shopping because of a physical, mental, or emotional condition. Updated population controls are introduced annually with the release of January data.

HOUSEHOLD DATA

Table A-7. Employment status of the civilian population by nativity and sex, not seasonally adjusted

[Numbers in thousands]

Employment status and nativity	Total		Men		Women	
	Oct. 2010	Oct. 2011	Oct. 2010	Oct. 2011	Oct. 2010	Oct. 2011
Foreign born, 16 years and over						
Civilian noninstitutional population.....	36,341	37,001	18,122	18,378	18,219	18,624
Civilian labor force.....	24,530	24,849	14,387	14,532	10,143	10,317
Participation rate.....	67.5	67.2	79.4	79.1	55.7	55.4
Employed.....	22,281	22,648	13,083	13,303	9,198	9,345
Employment-population ratio.....	61.3	61.2	72.2	72.4	50.5	50.2
Unemployed.....	2,249	2,201	1,304	1,230	945	971
Unemployment rate.....	9.2	8.9	9.1	8.5	9.3	9.4
Not in labor force.....	11,811	12,152	3,734	3,845	8,077	8,307
Native born, 16 years and over						
Civilian noninstitutional population.....	202,189	203,268	97,421	98,287	104,769	104,981
Civilian labor force.....	129,122	129,239	67,288	67,549	61,834	61,690
Participation rate.....	63.9	63.6	69.1	68.7	59.0	58.8
Employed.....	117,468	118,338	60,887	61,628	56,581	56,711
Employment-population ratio.....	58.1	58.2	62.5	62.7	54.0	54.0
Unemployed.....	11,654	10,901	6,401	5,921	5,253	4,980
Unemployment rate.....	9.0	8.4	9.5	8.8	8.5	8.1
Not in labor force.....	73,067	74,029	30,133	30,738	42,935	43,291

NOTE: The foreign born are those residing in the United States who were not U.S. citizens at birth. That is, they were born outside the United States or one of its outlying areas such as Puerto Rico or Guam, to parents neither of whom was a U.S. citizen. The native born are persons who were born in the United States or one of its outlying areas such as Puerto Rico or Guam or who were born abroad of at least one parent who was a U.S. citizen. Updated population controls are introduced annually with the release of January data.

HOUSEHOLD DATA

Table A-8. Employed persons by class of worker and part-time status

[In thousands]

Category	Not seasonally adjusted			Seasonally adjusted					
	Oct. 2010	Sept. 2011	Oct. 2011	Oct. 2010	June 2011	July 2011	Aug. 2011	Sept. 2011	Oct. 2011
CLASS OF WORKER									
Agriculture and related industries.....	2,360	2,281	2,246	2,348	2,217	2,245	2,355	2,267	2,250
Wage and salary workers ¹	1,475	1,409	1,339	1,446	1,383	1,419	1,475	1,380	1,325
Self-employed workers, unincorporated.....	840	839	873	823	829	810	843	839	862
Unpaid family workers.....	45	33	34	-	-	-	-	-	-
Nonagricultural industries.....	137,389	138,221	138,740	136,797	137,035	136,837	137,146	137,840	138,137
Wage and salary workers ¹	128,487	129,756	130,189	127,852	128,437	128,393	128,552	129,606	129,565
Government.....	20,900	20,569	20,682	20,717	20,318	20,302	20,286	20,568	20,519
Private industries.....	107,587	109,187	109,507	107,100	108,209	108,070	108,275	108,742	108,980
Private households.....	562	756	771	-	-	-	-	-	-
Other industries.....	107,025	108,431	108,736	106,470	107,511	107,319	107,556	107,992	108,160
Self-employed workers, unincorporated.....	8,817	8,411	8,501	8,862	8,543	8,525	8,551	8,334	8,521
Unpaid family workers.....	85	55	50	-	-	-	-	-	-
PERSONS AT WORK PART TIME²									
All industries									
Part time for economic reasons ³	8,408	8,541	8,258	9,100	8,552	8,396	8,826	9,270	8,896
Slack work or business conditions.....	5,695	5,497	5,518	6,174	5,806	5,687	5,833	5,963	5,901
Could only find part-time work.....	2,442	2,766	2,488	2,564	2,401	2,517	2,736	2,852	2,631
Part time for noneconomic reasons ⁴	18,717	18,647	18,941	18,230	18,470	18,258	18,208	18,308	18,392
Nonagricultural industries									
Part time for economic reasons ³	8,279	8,423	8,151	8,991	8,400	8,218	8,670	9,112	8,784
Slack work or business conditions.....	5,619	5,410	5,444	6,108	5,704	5,569	5,732	5,864	5,829
Could only find part-time work.....	2,421	2,749	2,472	2,534	2,341	2,466	2,720	2,868	2,613
Part time for noneconomic reasons ⁴	18,302	18,249	18,543	17,848	18,151	17,880	17,813	17,877	17,985

1 Includes self-employed workers whose businesses are incorporated.

2 Refers to those who worked 1 to 34 hours during the survey reference week and excludes employed persons who were absent from their jobs for the entire week.

3 Refers to those who worked 1 to 34 hours during the reference week for an economic reason such as slack work or unfavorable business conditions, inability to find full-time work, or seasonal declines in demand.

4 Refers to persons who usually work part time for noneconomic reasons such as childcare problems, family or personal obligations, school or training, retirement or Social Security limits on earnings, and other reasons. This excludes persons who usually work full time but worked only 1 to 34 hours during the reference week for reasons such as vacations, holidays, illness, and bad weather.

- Data not available.

NOTE: Detail for the seasonally adjusted data shown in this table will not necessarily add to totals because of the independent seasonal adjustment of the various series. Updated population controls are introduced annually with the release of January data.

HOUSEHOLD DATA

Table A-9. Selected employment indicators

[Numbers in thousands]

Characteristic	Not seasonally adjusted			Seasonally adjusted					
	Oct. 2010	Sept. 2011	Oct. 2011	Oct. 2010	June 2011	July 2011	Aug. 2011	Sept. 2011	Oct. 2011
AGE AND SEX									
Total, 16 years and over.....	139,749	140,502	140,987	139,084	139,334	139,296	139,627	140,025	140,302
16 to 19 years.....	4,144	4,177	4,226	4,319	4,299	4,244	4,312	4,352	4,397
16 to 17 years.....	1,409	1,450	1,447	1,434	1,358	1,343	1,341	1,414	1,442
18 to 19 years.....	2,735	2,727	2,779	2,894	2,945	2,890	2,981	2,944	2,961
20 years and over.....	135,605	136,325	136,761	134,764	135,035	135,052	135,315	135,673	135,905
20 to 24 years.....	12,723	13,061	13,306	12,774	12,911	12,860	12,895	13,072	13,357
25 years and over.....	122,881	123,264	123,454	121,910	122,175	122,228	122,447	122,610	122,496
25 to 54 years.....	94,791	93,920	94,108	94,011	93,505	93,550	93,568	93,460	93,338
25 to 34 years.....	30,589	30,750	30,806	30,323	30,416	30,322	30,635	30,587	30,557
35 to 44 years.....	30,886	30,228	30,295	30,650	30,197	30,249	30,017	30,053	30,043
45 to 54 years.....	33,315	32,941	33,007	33,037	32,892	32,979	32,916	32,819	32,738
55 years and over.....	28,091	29,345	29,346	27,899	28,670	28,677	28,880	29,150	29,158
Men, 16 years and over.....	73,970	74,821	74,931	73,470	74,014	73,908	74,122	74,364	74,442
16 to 19 years.....	2,010	2,025	2,007	2,106	2,077	2,072	2,107	2,089	2,106
16 to 17 years.....	623	692	626	660	646	652	629	674	666
18 to 19 years.....	1,387	1,334	1,381	1,443	1,451	1,429	1,492	1,418	1,443
20 years and over.....	71,960	72,796	72,924	71,365	71,937	71,836	72,015	72,276	72,336
20 to 24 years.....	6,481	6,874	7,017	6,542	6,754	6,711	6,747	6,858	7,084
25 years and over.....	65,479	65,923	65,907	64,803	65,193	65,163	65,289	65,429	65,262
25 to 54 years.....	50,805	50,373	50,406	50,209	50,096	50,018	50,019	50,022	49,844
25 to 34 years.....	16,668	16,852	16,884	16,434	16,607	16,481	16,674	16,686	16,658
35 to 44 years.....	16,737	16,395	16,360	16,573	16,365	16,371	16,226	16,277	16,201
45 to 54 years.....	17,400	17,127	17,162	17,202	17,124	17,167	17,118	17,059	16,986
55 years and over.....	14,675	15,549	15,501	14,594	15,097	15,146	15,271	15,407	15,418
Women, 16 years and over.....	65,779	65,680	66,056	65,613	65,320	65,388	65,505	65,661	65,859
16 to 19 years.....	2,134	2,152	2,219	2,214	2,222	2,172	2,205	2,263	2,290
16 to 17 years.....	786	759	821	774	713	691	712	740	777
18 to 19 years.....	1,348	1,393	1,398	1,452	1,494	1,461	1,489	1,525	1,518
20 years and over.....	63,645	63,529	63,837	63,400	63,098	63,216	63,300	63,398	63,569
20 to 24 years.....	6,242	6,187	6,290	6,232	6,157	6,149	6,148	6,214	6,273
25 years and over.....	57,402	57,341	57,547	57,106	56,982	57,064	57,158	57,181	57,233
25 to 54 years.....	43,986	43,546	43,703	43,801	43,409	43,533	43,549	43,438	43,494
25 to 34 years.....	13,921	13,899	13,923	13,889	13,809	13,841	13,960	13,901	13,899
35 to 44 years.....	14,150	13,833	13,935	14,077	13,833	13,879	13,790	13,776	13,843
45 to 54 years.....	15,915	15,815	15,844	15,836	15,768	15,813	15,798	15,760	15,752
55 years and over.....	13,416	13,795	13,845	13,305	13,573	13,532	13,609	13,744	13,740
MARITAL STATUS									
Married men, spouse present.....	43,492	43,938	43,940	43,301	43,004	43,145	43,184	43,637	43,632
Married women, spouse present.....	34,642	34,095	34,401	34,553	33,676	33,734	33,845	34,052	34,239
Women who maintain families.....	8,959	9,173	9,101	-	-	-	-	-	-
FULL- OR PART-TIME STATUS									
Full-time workers ¹	112,342	112,980	113,456	111,585	111,907	111,859	112,330	112,357	112,778
Part-time workers ²	27,407	27,522	27,530	27,433	27,631	27,606	27,407	27,704	27,514
MULTIPLE JOBHOLDERS									
Total multiple jobholders.....	6,817	6,946	6,989	6,679	6,880	6,741	6,927	6,964	6,887
Percent of total employed.....	4.9	4.9	5.0	4.8	4.9	4.8	5.0	5.0	4.9
SELF-EMPLOYMENT									
Self-employed workers, incorporated.....	5,037	4,950	5,030	-	-	-	-	-	-
Self-employed workers, unincorporated.....	9,657	9,249	9,374	9,684	9,372	9,335	9,394	9,173	9,383

1 Employed full-time workers are persons who usually work 35 hours or more per week.

2 Employed part-time workers are persons who usually work less than 35 hours per week.

- Data not available.

NOTE: Detail for the seasonally adjusted data shown in this table will not necessarily add to totals because of the independent seasonal adjustment of the various series. Updated population controls are introduced annually with the release of January data.

HOUSEHOLD DATA

Table A-10. Selected unemployment indicators, seasonally adjusted

Characteristic	Number of unemployed persons (in thousands)			Unemployment rates					
	Oct. 2010	Sept. 2011	Oct. 2011	Oct. 2010	June 2011	July 2011	Aug. 2011	Sept. 2011	Oct. 2011
AGE AND SEX									
Total, 16 years and over.....	14,876	13,992	13,897	9.7	9.2	9.1	9.1	9.1	9.0
16 to 19 years.....	1,607	1,418	1,393	27.1	24.5	25.0	25.4	24.6	24.1
16 to 17 years.....	624	511	488	30.3	28.2	28.7	29.6	26.5	25.3
18 to 19 years.....	952	893	898	24.7	22.8	23.1	24.5	23.3	23.3
20 years and over.....	13,269	12,573	12,504	9.0	8.6	8.5	8.5	8.5	8.4
20 to 24 years.....	2,300	2,249	2,176	15.3	14.5	14.6	14.8	14.7	14.0
25 years and over.....	10,942	10,339	10,342	8.2	8.0	7.8	7.8	7.8	7.8
25 to 54 years.....	8,761	8,284	8,147	8.5	8.2	8.0	8.1	8.1	8.0
25 to 34 years.....	3,350	3,287	3,313	9.9	9.6	9.7	9.5	9.7	9.8
35 to 44 years.....	2,616	2,443	2,339	7.9	7.8	7.1	7.7	7.5	7.2
45 to 54 years.....	2,796	2,554	2,495	7.8	7.3	7.3	7.1	7.2	7.1
55 years and over.....	2,169	2,106	2,187	7.2	7.0	6.9	6.6	6.7	7.0
Men, 16 years and over.....	8,530	7,758	7,809	10.4	9.7	9.6	9.6	9.4	9.5
16 to 19 years.....	879	807	796	29.4	27.4	27.2	28.1	27.9	27.4
16 to 17 years.....	337	257	249	33.8	30.7	29.9	28.6	27.6	27.2
18 to 19 years.....	529	533	551	26.8	25.7	25.6	28.9	27.3	27.6
20 years and over.....	7,651	6,952	7,013	9.7	9.1	9.0	8.9	8.8	8.8
20 to 24 years.....	1,297	1,286	1,222	16.5	15.5	15.7	16.5	15.8	14.7
25 years and over.....	6,321	5,712	5,808	8.9	8.4	8.2	8.1	8.0	8.2
25 to 54 years.....	5,007	4,572	4,605	9.1	8.6	8.4	8.5	8.4	8.5
25 to 34 years.....	1,913	1,817	1,895	10.4	10.0	10.2	9.8	9.8	10.2
35 to 44 years.....	1,479	1,354	1,324	8.2	8.1	7.5	8.1	7.7	7.6
45 to 54 years.....	1,615	1,401	1,386	8.6	7.7	7.7	7.4	7.6	7.5
55 years and over.....	1,315	1,139	1,203	8.3	7.9	7.4	7.0	6.9	7.2
Women, 16 years and over.....	6,346	6,233	6,087	8.8	8.6	8.5	8.5	8.7	8.5
16 to 19 years.....	728	612	597	24.8	21.6	22.7	22.6	21.3	20.7
16 to 17 years.....	287	254	239	27.0	25.9	27.5	30.5	25.5	23.6
18 to 19 years.....	423	360	347	22.6	19.7	20.6	19.4	19.1	18.6
20 years and over.....	5,618	5,622	5,491	8.1	8.0	7.9	8.0	8.1	8.0
20 to 24 years.....	1,003	963	954	13.9	13.4	13.2	12.8	13.4	13.2
25 years and over.....	4,620	4,628	4,533	7.5	7.4	7.3	7.4	7.5	7.3
25 to 54 years.....	3,754	3,712	3,542	7.9	7.8	7.5	7.7	7.9	7.5
25 to 34 years.....	1,436	1,470	1,418	9.4	9.1	9.1	9.1	9.6	9.3
35 to 44 years.....	1,137	1,088	1,015	7.5	7.4	6.7	7.2	7.3	6.8
45 to 54 years.....	1,181	1,153	1,110	6.9	6.9	6.8	6.8	6.8	6.6
55 years and over ¹	846	978	970	5.9	6.3	7.3	7.1	6.6	6.5
MARITAL STATUS									
Married men, spouse present.....	3,225	2,738	2,707	6.9	6.2	6.1	5.9	5.9	5.8
Married women, spouse present.....	2,079	2,127	2,092	5.7	5.6	5.6	5.8	5.9	5.8
Women who maintain families ¹	1,267	1,294	1,275	12.4	12.8	12.1	11.9	12.4	12.3
FULL- OR PART-TIME STATUS									
Full-time workers ²	13,027	12,240	11,998	10.5	9.8	9.8	9.7	9.8	9.6
Part-time workers ³	1,854	1,774	1,892	6.3	6.7	6.1	6.5	6.0	6.4

1 Not seasonally adjusted.

2 Full-time workers are unemployed persons who have expressed a desire to work full time (35 hours or more per week) or are on layoff from full-time jobs.

3 Part-time workers are unemployed persons who have expressed a desire to work part time (less than 35 hours per week) or are on layoff from part-time jobs.

NOTE: Detail for the seasonally adjusted data shown in this table will not necessarily add to totals because of the independent seasonal adjustment of the various series. Updated population controls are introduced annually with the release of January data.

HOUSEHOLD DATA

Table A-11. Unemployed persons by reason for unemployment

[Numbers in thousands]

Reason	Not seasonally adjusted			Seasonally adjusted					
	Oct. 2010	Sept. 2011	Oct. 2011	Oct. 2010	June 2011	July 2011	Aug. 2011	Sept. 2011	Oct. 2011
NUMBER OF UNEMPLOYED									
Job losers and persons who completed temporary jobs.....	8,331	7,636	7,390	9,070	8,261	8,215	8,203	8,121	8,006
On temporary layoff.....	890	813	861	1,293	1,251	1,268	1,247	1,196	1,236
Not on temporary layoff.....	7,441	6,823	6,528	7,777	7,010	6,947	6,956	6,925	6,770
Permanent job losers.....	6,009	5,383	5,170	6,254	5,606	5,567	5,545	5,500	5,362
Persons who completed temporary jobs.....	1,432	1,440	1,359	1,523	1,405	1,380	1,411	1,426	1,409
Job leavers.....	876	1,064	1,103	854	965	928	963	967	1,072
Reentrants.....	3,466	3,500	3,368	3,498	3,430	3,410	3,532	3,504	3,400
New entrants.....	1,230	1,320	1,242	1,278	1,222	1,270	1,241	1,327	1,293
PERCENT DISTRIBUTION									
Job losers and persons who completed temporary jobs.....	59.9	56.5	56.4	61.7	59.5	59.4	58.8	58.3	58.1
On temporary layoff.....	6.4	6.0	6.6	8.8	9.0	9.2	8.9	8.6	9.0
Not on temporary layoff.....	53.5	50.5	49.8	52.9	50.5	50.3	49.9	49.8	49.2
Job leavers.....	6.3	7.9	8.4	5.8	7.0	6.7	6.9	6.9	7.8
Reentrants.....	24.9	25.9	25.7	23.8	24.7	24.7	25.3	25.2	24.7
New entrants.....	8.8	9.8	9.5	8.7	8.8	9.2	8.9	9.5	9.4
UNEMPLOYED AS A PERCENT OF THE CIVILIAN LABOR FORCE									
Job losers and persons who completed temporary jobs.....	5.4	5.0	4.8	5.9	5.4	5.4	5.3	5.3	5.2
Job leavers.....	0.6	0.7	0.7	0.6	0.6	0.6	0.6	0.6	0.7
Reentrants.....	2.3	2.3	2.2	2.3	2.2	2.2	2.3	2.3	2.2
New entrants.....	0.8	0.9	0.8	0.8	0.8	0.8	0.8	0.9	0.8

NOTE: Updated population controls are introduced annually with the release of January data.

HOUSEHOLD DATA

Table A-12. Unemployed persons by duration of unemployment

[Numbers in thousands]

Duration	Not seasonally adjusted			Seasonally adjusted					
	Oct. 2010	Sept. 2011	Oct. 2011	Oct. 2010	June 2011	July 2011	Aug. 2011	Sept. 2011	Oct. 2011
NUMBER OF UNEMPLOYED									
Less than 5 weeks.....	2,432	2,760	2,443	2,659	3,076	2,689	2,755	2,772	2,694
5 to 14 weeks.....	3,037	2,726	2,985	3,427	2,972	3,088	3,050	2,904	3,250
15 weeks and over.....	8,434	8,034	7,674	8,734	8,125	8,150	8,273	8,328	7,924
15 to 26 weeks.....	2,335	1,816	1,936	2,500	1,836	1,965	2,239	2,086	2,048
27 weeks and over.....	6,099	6,217	5,738	6,234	6,289	6,185	6,034	6,242	5,876
Average (mean) duration, in weeks ¹	34.9	41.0	39.8	33.9	39.9	40.4	40.3	40.5	39.4
Median duration, in weeks.....	21.9	22.2	21.1	21.3	22.5	21.2	21.8	22.2	20.8
PERCENT DISTRIBUTION									
Less than 5 weeks.....	17.5	20.4	18.6	17.9	21.7	19.3	19.6	19.8	19.4
5 to 14 weeks.....	21.8	20.2	22.8	23.1	21.0	22.2	21.7	20.7	23.4
15 weeks and over.....	60.7	59.4	58.6	58.9	57.3	58.5	58.8	59.5	57.1
15 to 26 weeks.....	16.8	13.4	14.8	16.9	13.0	14.1	15.9	14.9	14.8
27 weeks and over.....	43.9	46.0	43.8	42.1	44.4	44.4	42.9	44.6	42.4

¹ Beginning in January 2011, this series reflects a change to the collection of data on unemployment duration. For more information, see www.bls.gov/cps/duration.htm.

NOTE: Updated population controls are introduced annually with the release of January data.

HOUSEHOLD DATA

Table A-13. Employed and unemployed persons by occupation, not seasonally adjusted

[Numbers in thousands]

Occupation	Employed		Unemployed		Unemployment rates	
	Oct. 2010	Oct. 2011	Oct. 2010	Oct. 2011	Oct. 2010	Oct. 2011
Total, 16 years and over ¹	139,749	140,987	13,903	13,102	9.0	8.5
Management, professional, and related occupations.....	51,818	52,864	2,417	2,410	4.5	4.4
Management, business, and financial operations occupations.....	20,699	21,700	1,089	1,068	5.0	4.7
Professional and related occupations.....	31,119	31,164	1,328	1,342	4.1	4.1
Service occupations.....	24,540	25,108	2,758	2,772	10.1	9.9
Sales and office occupations.....	33,394	32,932	3,300	3,023	9.0	8.4
Sales and related occupations.....	15,439	15,323	1,548	1,368	9.1	8.2
Office and administrative support occupations.....	17,955	17,609	1,752	1,655	8.9	8.6
Natural resources, construction, and maintenance occupations.....	13,091	13,121	2,060	1,746	13.6	11.7
Farming, fishing, and forestry occupations.....	1,085	1,028	155	174	12.5	14.5
Construction and extraction occupations.....	7,026	7,125	1,456	1,184	17.2	14.2
Installation, maintenance, and repair occupations.....	4,980	4,969	449	388	8.3	7.2
Production, transportation, and material moving occupations.....	16,906	16,963	2,091	1,857	11.0	9.9
Production occupations.....	8,255	8,474	1,134	897	12.1	9.6
Transportation and material moving occupations.....	8,651	8,489	958	961	10.0	10.2

¹ Persons with no previous work experience and persons whose last job was in the U.S. Armed Forces are included in the unemployed total.

NOTE: Updated population controls are introduced annually with the release of January data. Effective with January 2011 data, occupations reflect the introduction of the 2010 Census occupational classification system into the Current Population Survey, or household survey. This classification system is derived from the 2010 Standard Occupational Classification (SOC). No historical data have been revised. Data for 2011 are not strictly comparable with earlier years.

HOUSEHOLD DATA

Table A-14. Unemployed persons by industry and class of worker, not seasonally adjusted

Industry and class of worker	Number of unemployed persons (in thousands)		Unemployment rates	
	Oct. 2010	Oct. 2011	Oct. 2010	Oct. 2011
Total, 16 years and over ¹	13,903	13,102	9.0	8.5
Nonagricultural private wage and salary workers.....	10,990	10,126	9.3	8.5
Mining, quarrying, and oil and gas extraction.....	89	69	10.4	7.8
Construction.....	1,445	1,129	17.3	13.7
Manufacturing.....	1,474	1,200	9.5	7.7
Durable goods.....	937	759	9.8	8.0
Nondurable goods.....	537	441	9.0	7.3
Wholesale and retail trade.....	1,888	1,764	9.2	8.6
Transportation and utilities.....	404	462	6.9	7.8
Information.....	300	195	9.8	6.6
Financial activities.....	590	524	6.7	5.8
Professional and business services.....	1,525	1,495	10.6	10.1
Education and health services.....	1,263	1,221	5.8	5.6
Leisure and hospitality.....	1,458	1,448	11.1	10.8
Other services.....	554	618	8.8	9.6
Agriculture and related private wage and salary workers.....	176	198	11.0	13.4
Government workers.....	950	924	4.3	4.3
Self-employed workers, unincorporated, and unpaid family workers.....	557	612	5.4	6.1

¹ Persons with no previous work experience and persons whose last job was in the U.S. Armed Forces are included in the unemployed total.

NOTE: Updated population controls are introduced annually with the release of January data.

HOUSEHOLD DATA

Table A-15. Alternative measures of labor underutilization

[Percent]

Measure	Not seasonally adjusted			Seasonally adjusted					
	Oct. 2010	Sept. 2011	Oct. 2011	Oct. 2010	June 2011	July 2011	Aug. 2011	Sept. 2011	Oct. 2011
U-1 Persons unemployed 15 weeks or longer, as a percent of the civilian labor force.....	5.5	5.2	5.0	5.7	5.3	5.3	5.4	5.4	5.1
U-2 Job losers and persons who completed temporary jobs, as a percent of the civilian labor force.....	5.4	5.0	4.8	5.9	5.4	5.4	5.3	5.3	5.2
U-3 Total unemployed, as a percent of the civilian labor force (official unemployment rate).....	9.0	8.8	8.5	9.7	9.2	9.1	9.1	9.1	9.0
U-4 Total unemployed plus discouraged workers, as a percent of the civilian labor force plus discouraged workers.....	9.8	9.4	9.1	10.4	9.8	9.8	9.7	9.7	9.6
U-5 Total unemployed, plus discouraged workers, plus all other persons marginally attached to the labor force, as a percent of the civilian labor force plus all persons marginally attached to the labor force.....	10.6	10.2	10.0	11.2	10.7	10.7	10.6	10.5	10.5
U-6 Total unemployed, plus all persons marginally attached to the labor force, plus total employed part time for economic reasons, as a percent of the civilian labor force plus all persons marginally attached to the labor force.....	15.9	15.7	15.3	17.0	16.2	16.1	16.2	16.5	16.2

NOTE: Persons marginally attached to the labor force are those who currently are neither working nor looking for work but indicate that they want and are available for a job and have looked for work sometime in the past 12 months. Discouraged workers, a subset of the marginally attached, have given a job-market related reason for not currently looking for work. Persons employed part time for economic reasons are those who want and are available for full-time work but have had to settle for a part-time schedule. Updated population controls are introduced annually with the release of January data.

HOUSEHOLD DATA

Table A-16. Persons not in the labor force and multiple jobholders by sex, not seasonally adjusted

[Numbers in thousands]

Category	Total		Men		Women	
	Oct. 2010	Oct. 2011	Oct. 2010	Oct. 2011	Oct. 2010	Oct. 2011
NOT IN THE LABOR FORCE						
Total not in the labor force.....	84,878	86,181	33,867	34,583	51,011	51,598
Persons who currently want a job.....	5,867	5,969	2,806	2,818	3,061	3,151
Marginally attached to the labor force ¹	2,602	2,555	1,345	1,358	1,258	1,196
Discouraged workers ²	1,219	967	712	575	507	392
Other persons marginally attached to the labor force ³	1,383	1,588	633	783	751	805
MULTIPLE JOBHOLDERS						
Total multiple jobholders ⁴	6,817	6,989	3,177	3,415	3,640	3,574
Percent of total employed.....	4.9	5.0	4.3	4.6	5.5	5.4
Primary job full time, secondary job part time.....	3,653	3,631	1,834	1,993	1,819	1,638
Primary and secondary jobs both part time.....	1,850	1,851	647	588	1,203	1,263
Primary and secondary jobs both full time.....	197	222	118	156	80	65
Hours vary on primary or secondary job.....	1,103	1,251	573	659	531	592

1 Data refer to persons who want a job, have searched for work during the prior 12 months, and were available to take a job during the reference week, but had not looked for work in the past 4 weeks.

2 Includes those who did not actively look for work in the prior 4 weeks for reasons such as thinks no work available, could not find work, lacks schooling or training, employer thinks too young or old, and other types of discrimination.

3 Includes those who did not actively look for work in the prior 4 weeks for such reasons as school or family responsibilities, ill health, and transportation problems, as well as a number for whom reason for nonparticipation was not determined.

4 Includes a small number of persons who work part time on their primary job and full time on their secondary job(s), not shown separately.

NOTE: Updated population controls are introduced annually with the release of January data.

ESTABLISHMENT DATA

Table B-1. Employees on nonfarm payrolls by industry sector and selected industry detail

[In thousands]

Industry	Not seasonally adjusted				Seasonally adjusted				Change from: Sept. 2011 - Oct. 2011 ^P
	Oct. 2010	Aug. 2011	Sept. 2011 ^P	Oct. 2011 ^P	Oct. 2010	Aug. 2011	Sept. 2011 ^P	Oct. 2011 ^P	
Total nonfarm.....	131,071	131,058	131,689	132,572	130,015	131,278	131,436	131,516	80
Total private.....	108,429	110,193	109,876	110,230	107,713	109,242	109,433	109,537	104
Goods-producing.....	18,103	18,507	18,438	18,408	17,785	18,075	18,104	18,094	-10
Mining and logging.....	743	814	816	823	734	800	805	810	5
Logging.....	51.4	49.4	49.7	48.6	49.1	47.1	47.3	46.4	-0.9
Mining.....	692.0	764.4	766.1	774.0	685.0	753.0	757.4	763.5	6.1
Oil and gas extraction.....	161.5	178.6	179.9	183.0	162.5	177.4	180.6	183.6	3.0
Mining, except oil and gas ¹	210.4	222.0	219.6	220.5	206.1	214.4	214.4	215.2	0.8
Coal mining.....	82.3	87.0	87.0	87.0	82.4	86.7	86.9	87.1	0.2
Support activities for mining.....	320.1	363.8	366.6	370.5	316.4	361.2	362.4	364.7	2.3
Construction.....	5,748	5,833	5,791	5,765	5,512	5,518	5,545	5,525	-20
Construction of buildings.....	1,256.9	1,275.3	1,272.4	1,269.1	1,217.1	1,220.7	1,231.7	1,230.5	-1.2
Residential building.....	579.8	581.4	577.0	580.5	559.5	555.9	559.3	562.6	3.3
Nonresidential building.....	677.1	693.9	695.4	688.6	657.6	664.8	672.4	667.9	-4.5
Heavy and civil engineering construction.....	906.6	911.0	912.2	915.6	845.1	843.0	847.4	851.1	3.7
Specialty trade contractors.....	3,584.0	3,647.1	3,606.7	3,580.7	3,450.1	3,454.3	3,465.8	3,443.7	-22.1
Residential specialty trade contractors.....	1,504.7	1,536.2	1,521.2	1,514.4	1,438.8	1,452.9	1,452.7	1,453.1	0.4
Nonresidential specialty trade contractors....	2,079.3	2,110.9	2,085.5	2,066.3	2,011.3	2,001.4	2,013.1	1,990.6	-22.5
Manufacturing.....	11,612	11,860	11,831	11,820	11,539	11,757	11,754	11,759	5
Durable goods.....	7,135	7,354	7,341	7,348	7,097	7,308	7,310	7,321	11
Wood products.....	339.0	339.1	335.6	332.7	336.0	330.5	330.8	331.0	0.2
Nonmetallic mineral products.....	379.9	380.9	377.1	375.3	371.8	369.5	367.9	367.1	-0.8
Primary metals.....	367.0	387.9	390.8	392.6	365.3	387.9	389.4	391.7	2.3
Fabricated metal products.....	1,313.5	1,372.2	1,368.8	1,370.3	1,300.6	1,361.4	1,360.5	1,361.1	0.6
Machinery.....	1,004.8	1,057.4	1,054.9	1,062.7	1,000.2	1,054.3	1,057.0	1,060.9	3.9
Computer and electronic products ¹	1,103.3	1,133.7	1,129.3	1,127.4	1,102.9	1,129.6	1,129.6	1,128.5	-1.1
Computer and peripheral equipment.....	163.7	173.3	172.9	172.8	163.5	173.0	172.8	173.0	0.2
Communication equipment.....	120.2	117.0	116.6	115.0	120.1	116.5	116.2	114.7	-1.5
Semiconductors and electronic components.....	372.5	390.5	389.5	389.2	372.1	388.4	389.2	389.5	0.3
Electronic instruments.....	403.3	403.9	402.1	402.1	403.8	402.9	402.8	402.8	0.0
Electrical equipment and appliances.....	365.3	374.0	371.8	372.1	364.7	371.7	371.2	371.7	0.5
Transportation equipment ¹	1,336.1	1,372.2	1,382.2	1,389.1	1,333.3	1,373.9	1,376.9	1,386.4	9.5
Motor vehicles and parts ²	680.5	700.0	709.1	713.0	678.2	702.2	704.2	710.4	6.2
Furniture and related products.....	355.1	357.2	354.3	351.1	354.5	351.7	351.2	350.1	-1.1
Miscellaneous manufacturing.....	571.3	579.1	575.8	574.7	567.5	577.7	575.3	572.9	-2.4
Nondurable goods.....	4,477	4,506	4,490	4,472	4,442	4,449	4,444	4,438	-6
Food manufacturing.....	1,463.0	1,479.7	1,472.3	1,464.1	1,440.3	1,443.4	1,442.2	1,442.9	0.7
Beverages and tobacco products.....	188.3	194.9	193.8	191.5	184.4	189.4	187.7	186.8	-0.9
Textile mills.....	119.3	122.5	121.4	120.1	118.8	122.0	121.2	120.1	-1.1
Textile product mills.....	118.3	116.2	113.2	113.8	117.1	116.1	113.7	113.1	-0.6
Apparel.....	156.6	155.6	157.5	156.4	156.6	154.6	155.6	156.1	0.5
Leather and allied products.....	28.9	29.2	30.2	30.5	28.3	29.0	29.8	30.0	0.2
Paper and paper products.....	397.2	400.8	400.4	400.9	396.6	399.2	399.5	399.9	0.4
Printing and related support activities.....	483.5	470.2	465.0	464.2	481.3	468.7	463.8	461.9	-1.9
Petroleum and coal products.....	117.6	114.3	114.3	116.8	115.5	111.4	112.3	113.6	1.3
Chemicals.....	777.2	785.8	785.6	781.1	779.4	783.2	785.6	782.8	-2.8
Plastics and rubber products.....	627.0	636.7	636.0	632.7	623.9	631.7	632.5	630.9	-1.6
Private service-providing.....	90,326	91,686	91,438	91,822	89,928	91,167	91,329	91,443	114
Trade, transportation, and utilities.....	24,747	24,959	24,898	25,077	24,670	24,957	24,968	25,003	35
Wholesale trade.....	5,488.5	5,573.9	5,547.1	5,568.5	5,467.4	5,547.8	5,541.8	5,549.9	8.1
Durable goods.....	2,736.6	2,790.8	2,774.8	2,784.7	2,728.3	2,776.9	2,774.3	2,778.2	3.9
Nondurable goods.....	1,941.5	1,962.2	1,954.3	1,961.3	1,931.8	1,952.8	1,951.6	1,952.1	0.5
Electronic markets and agents and brokers...	810.4	820.9	818.0	822.5	807.3	818.1	815.9	819.6	3.7
Retail trade.....	14,455.8	14,591.7	14,481.8	14,623.3	14,456.6	14,581.6	14,594.9	14,612.7	17.8
Motor vehicle and parts dealers ¹	1,642.4	1,696.3	1,692.3	1,694.7	1,634.9	1,678.7	1,681.3	1,687.6	6.3
Automobile dealers.....	1,016.5	1,051.0	1,051.7	1,053.1	1,012.6	1,043.7	1,045.9	1,049.8	3.9

See footnotes at end of table.

ESTABLISHMENT DATA

Table B-1. Employees on nonfarm payrolls by industry sector and selected industry detail

— Continued

[In thousands]

Industry	Not seasonally adjusted				Seasonally adjusted				Change from: Sept.2011 - Oct.2011 ^P
	Oct. 2010	Aug. 2011	Sept. 2011 ^P	Oct. 2011 ^P	Oct. 2010	Aug. 2011	Sept. 2011 ^P	Oct. 2011 ^P	
Retail trade - Continued									
Furniture and home furnishings stores.....	444.0	430.2	431.7	449.7	439.6	437.2	438.6	443.0	4.4
Electronics and appliance stores.....	508.3	485.8	477.0	488.1	506.1	493.8	485.6	486.5	0.9
Building material and garden supply stores...	1,098.0	1,128.4	1,107.8	1,103.7	1,109.9	1,119.9	1,119.6	1,120.5	0.9
Food and beverage stores.....	2,815.1	2,855.0	2,840.5	2,848.9	2,810.6	2,840.1	2,846.7	2,844.5	-2.2
Health and personal care stores.....	974.7	977.4	974.7	978.3	977.6	977.5	980.4	979.7	-0.7
Gasoline stations.....	816.2	835.6	822.8	822.2	814.4	821.2	816.9	820.2	3.3
Clothing and clothing accessories stores....	1,396.8	1,435.7	1,410.4	1,444.7	1,401.1	1,436.5	1,444.5	1,445.9	1.4
Sporting goods, hobby, book, and music stores.....	598.7	598.4	596.4	595.0	597.4	600.1	598.7	595.7	-3.0
General merchandise stores ¹	2,967.3	2,966.6	2,941.3	2,995.9	2,988.2	2,991.0	2,997.2	3,007.2	10.0
Department stores.....	1,479.4	1,478.5	1,460.8	1,495.7	1,495.1	1,500.2	1,502.6	1,508.0	5.4
Miscellaneous store retailers.....	765.7	771.0	768.3	772.2	757.8	766.7	768.3	764.7	-3.6
Nonstore retailers.....	428.6	411.3	418.6	429.9	419.0	418.9	417.1	417.2	0.1
Transportation and warehousing.....	4,253.1	4,238.5	4,315.1	4,331.6	4,196.2	4,274.5	4,277.0	4,286.4	9.4
Air transportation.....	464.6	479.7	476.1	475.0	463.7	475.7	475.1	474.9	-0.2
Rail transportation.....	218.7	226.9	227.1	227.1	218.4	226.5	226.1	226.6	0.5
Water transportation.....	64.0	65.8	64.7	65.3	63.5	63.6	64.0	64.7	0.7
Truck transportation.....	1,271.7	1,305.2	1,305.5	1,306.7	1,250.2	1,281.8	1,283.7	1,286.8	3.1
Transit and ground passenger transportation.....	462.0	377.4	455.8	462.5	442.9	445.0	444.0	444.6	0.6
Pipeline transportation.....	42.0	43.0	43.2	43.2	41.8	42.9	43.2	43.1	-0.1
Scenic and sightseeing transportation.....	28.6	37.0	34.0	31.0	28.1	28.9	28.6	29.7	1.1
Support activities for transportation.....	546.3	558.0	557.0	562.6	543.0	556.1	557.0	559.3	2.3
Couriers and messengers.....	519.4	513.4	517.1	515.6	516.5	521.9	522.8	521.8	-1.0
Warehousing and storage.....	635.8	632.1	634.6	642.6	628.1	632.1	632.5	634.9	2.4
Utilities.....	549.5	554.8	553.6	553.2	549.8	552.6	554.1	553.5	-0.6
Information.....	2,696	2,637	2,651	2,652	2,697	2,627	2,661	2,656	-5
Publishing industries, except Internet.....	759.1	756.5	753.4	756.0	758.9	755.3	754.5	755.4	0.9
Motion picture and sound recording industries.....	368.2	376.7	358.2	353.4	372.0	366.5	361.2	358.5	-2.7
Broadcasting, except Internet.....	297.3	293.5	294.0	295.1	296.0	294.3	294.4	293.8	-0.6
Telecommunications.....	887.3	809.6	846.2	844.0	886.2	809.6	849.1	844.2	-4.9
Data processing, hosting and related services.....	240.3	237.5	237.0	238.6	240.6	239.5	238.5	238.9	0.4
Other information services.....	143.5	163.3	162.6	164.5	143.3	162.0	163.0	164.8	1.8
Financial activities.....	7,621	7,657	7,610	7,615	7,617	7,612	7,607	7,611	4
Finance and insurance.....	5,683.8	5,678.6	5,655.1	5,665.2	5,685.6	5,670.4	5,666.1	5,665.9	-0.2
Monetary authorities - central bank.....	20.7	22.0	21.8	21.9	20.8	21.8	21.8	22.0	0.2
Credit intermediation and related activities ¹	2,548.8	2,545.6	2,537.1	2,539.8	2,552.0	2,542.9	2,542.8	2,540.8	-2.0
Depository credit intermediation ¹	1,737.5	1,763.8	1,753.5	1,754.5	1,738.9	1,757.8	1,757.8	1,756.7	-1.1
Commercial banking.....	1,311.9	1,330.0	1,322.9	1,323.3	1,313.8	1,325.8	1,325.4	1,324.5	-0.9
Securities, commodity contracts, investments.....	801.5	814.1	807.2	808.5	800.3	811.7	809.2	808.3	-0.9
Insurance carriers and related activities.....	2,225.6	2,211.1	2,203.7	2,208.9	2,225.7	2,208.2	2,206.5	2,209.0	2.5
Funds, trusts, and other financial vehicles. . .	87.2	85.8	85.3	86.1	86.8	85.8	85.8	85.8	0.0
Real estate and rental and leasing.....	1,936.8	1,978.8	1,954.5	1,949.5	1,931.7	1,941.9	1,941.2	1,945.2	4.0
Real estate.....	1,396.6	1,423.7	1,403.1	1,405.9	1,391.6	1,402.6	1,396.5	1,401.3	4.8
Rental and leasing services.....	515.0	529.2	525.6	517.6	514.7	513.5	518.8	517.9	-0.9
Lessors of nonfinancial intangible assets.....	25.2	25.9	25.8	26.0	25.4	25.8	25.9	26.0	0.1
Professional and business services.....	16,950	17,368	17,358	17,490	16,759	17,239	17,289	17,321	32
Professional and technical services ¹	7,398.0	7,624.6	7,600.3	7,653.7	7,422.9	7,661.0	7,684.0	7,687.2	3.2
Legal services.....	1,116.3	1,118.2	1,109.1	1,113.8	1,115.9	1,113.7	1,112.5	1,112.9	0.4
Accounting and bookkeeping services.....	805.7	849.8	851.3	860.5	871.4	924.6	930.2	932.2	2.0
Architectural and engineering services.....	1,282.7	1,320.3	1,309.6	1,311.3	1,272.6	1,301.5	1,304.4	1,302.2	-2.2
Computer systems design and related services.....	1,465.1	1,520.7	1,517.1	1,530.1	1,456.9	1,515.2	1,519.9	1,522.8	2.9
Management and technical consulting services.....	1,003.4	1,055.6	1,052.0	1,069.5	994.6	1,053.6	1,057.3	1,061.1	3.8

See footnotes at end of table.

ESTABLISHMENT DATA

Table B-1. Employees on nonfarm payrolls by industry sector and selected industry detail

— Continued

[In thousands]

Industry	Not seasonally adjusted				Seasonally adjusted				Change from: Sept. 2011 - Oct. 2011 ^P
	Oct. 2010	Aug. 2011	Sept. 2011 ^P	Oct. 2011 ^P	Oct. 2010	Aug. 2011	Sept. 2011 ^P	Oct. 2011 ^P	
Professional and business services - Continued									
Management of companies and enterprises.	1,868.7	1,895.9	1,892.9	1,897.7	1,869.9	1,887.8	1,892.6	1,896.8	4.2
Administrative and waste services.	7,683.5	7,847.8	7,864.4	7,938.9	7,466.3	7,690.1	7,712.0	7,737.4	25.4
Administrative and support services ¹	7,321.8	7,472.8	7,491.5	7,568.9	7,106.6	7,323.6	7,343.7	7,369.7	26.0
Employment services ¹	2,912.2	2,982.6	3,036.9	3,107.0	2,765.8	2,937.0	2,959.4	2,973.8	14.4
Temporary help services.	2,259.0	2,296.6	2,354.9	2,423.8	2,137.3	2,270.3	2,291.4	2,306.4	15.0
Business support services.	816.6	795.9	794.8	805.2	809.2	804.4	802.6	797.5	-5.1
Services to buildings and dwellings.	1,794.9	1,866.0	1,830.6	1,819.3	1,747.9	1,765.3	1,766.1	1,773.2	7.1
Waste management and remediation services.	361.7	375.0	372.9	370.0	359.7	366.5	368.3	367.7	-0.6
Education and health services.	19,865	19,694	20,014	20,297	19,695	20,036	20,094	20,122	28
Educational services.	3,320.1	2,907.6	3,188.6	3,398.9	3,170.1	3,225.7	3,237.6	3,248.6	11.0
Health care and social assistance.	16,544.6	16,786.4	16,825.7	16,898.4	16,524.4	16,810.5	16,856.6	16,872.9	16.3
Health care ³	13,884.0	14,160.0	14,160.3	14,201.7	13,875.0	14,131.7	14,176.7	14,188.3	11.6
Ambulatory health care services ¹	6,039.1	6,185.9	6,190.5	6,218.2	6,033.4	6,178.0	6,201.7	6,206.5	4.8
Offices of physicians.	2,330.1	2,374.3	2,377.9	2,398.1	2,327.8	2,373.3	2,383.8	2,392.0	8.2
Outpatient care centers.	606.9	622.9	625.5	630.9	607.2	622.4	627.1	630.0	2.9
Home health care services.	1,097.4	1,133.5	1,139.8	1,144.0	1,096.1	1,133.9	1,139.9	1,141.9	2.0
Hospitals.	4,696.6	4,767.8	4,772.9	4,779.5	4,694.1	4,758.0	4,774.8	4,778.1	3.3
Nursing and residential care facilities ¹	3,148.3	3,206.3	3,196.9	3,204.0	3,147.5	3,195.7	3,200.2	3,203.7	3.5
Nursing care facilities.	1,667.9	1,687.6	1,683.1	1,686.7	1,667.0	1,683.6	1,684.4	1,686.9	2.5
Social assistance ¹	2,660.6	2,626.4	2,665.4	2,696.7	2,649.4	2,678.8	2,679.9	2,684.6	4.7
Child day care services.	867.6	804.9	848.7	862.1	856.1	853.9	852.6	852.7	0.1
Leisure and hospitality.	13,031	13,870	13,462	13,238	13,072	13,240	13,253	13,275	22
Arts, entertainment, and recreation.	1,861.8	2,160.0	1,978.7	1,866.5	1,899.8	1,897.5	1,895.6	1,902.1	6.5
Performing arts and spectator sports.	410.9	431.4	433.2	410.2	404.8	401.6	406.7	404.1	-2.6
Museums, historical sites, zoos, and parks.	126.3	144.2	132.9	131.9	125.9	131.7	130.8	131.8	1.0
Amusements, gambling, and recreation.	1,324.6	1,584.4	1,412.6	1,324.4	1,369.1	1,364.2	1,358.1	1,366.2	8.1
Accommodation and food services.	11,169.0	11,709.8	11,483.2	11,371.8	11,172.4	11,342.7	11,357.2	11,373.0	15.8
Accommodation.	1,755.0	1,954.0	1,846.2	1,798.8	1,766.2	1,811.9	1,808.1	1,811.1	3.0
Food services and drinking places.	9,414.0	9,755.8	9,637.0	9,573.0	9,406.2	9,530.8	9,549.1	9,561.9	12.8
Other services.	5,416	5,501	5,445	5,453	5,418	5,456	5,457	5,455	-2
Repair and maintenance.	1,146.0	1,159.0	1,157.4	1,158.2	1,145.2	1,152.7	1,155.6	1,156.8	1.2
Personal and laundry services.	1,268.4	1,293.9	1,288.3	1,284.1	1,272.3	1,287.1	1,289.9	1,288.0	-1.9
Membership associations and organizations.	3,002.0	3,048.3	2,998.9	3,010.7	3,000.0	3,016.2	3,011.1	3,009.9	-1.2
Government.	22,642	20,865	21,813	22,342	22,302	22,036	22,003	21,979	-24
Federal.	2,850.0	2,837.0	2,825.0	2,813.0	2,847.0	2,818.0	2,814.0	2,812.0	-2.0
Federal, except U.S. Postal Service.	2,198.5	2,219.7	2,214.2	2,191.2	2,199.9	2,197.3	2,199.1	2,194.6	-4.5
U.S. Postal Service.	651.1	617.1	610.7	622.0	646.6	620.7	614.8	617.5	2.7
State government.	5,297.0	4,816.0	5,095.0	5,210.0	5,146.0	5,086.0	5,078.0	5,058.0	-20.0
State government education.	2,552.1	2,114.4	2,409.2	2,551.3	2,393.7	2,402.7	2,397.0	2,392.7	-4.3
State government, excluding education.	2,744.6	2,701.5	2,686.2	2,658.8	2,752.2	2,683.3	2,681.0	2,665.3	-15.6
Local government.	14,495.0	13,212.0	13,893.0	14,319.0	14,309.0	14,132.0	14,111.0	14,109.0	-2.0
Local government education.	8,206.5	6,772.2	7,637.7	8,107.7	7,980.0	7,874.5	7,860.4	7,861.6	1.2
Local government, excluding education.	6,288.7	6,439.8	6,254.9	6,211.6	6,328.6	6,257.6	6,250.7	6,247.2	-3.5

1 Includes other industries, not shown separately.

2 Includes motor vehicles, motor vehicle bodies and trailers, and motor vehicle parts.

3 Includes ambulatory health care services, hospitals, and nursing and residential care facilities.

p Preliminary

ESTABLISHMENT DATA

Table B-2. Average weekly hours and overtime of all employees on private nonfarm payrolls by industry sector, seasonally adjusted

Industry	Oct. 2010	Aug. 2011	Sept. 2011 ^p	Oct. 2011 ^p
AVERAGE WEEKLY HOURS				
Total private.....	34.3	34.2	34.3	34.3
Goods-producing.....	39.8	39.8	39.9	40.0
Mining and logging.....	43.6	44.2	44.3	44.9
Construction.....	38.2	38.2	38.5	38.2
Manufacturing.....	40.4	40.3	40.3	40.5
Durable goods.....	40.6	40.6	40.7	40.9
Nondurable goods.....	40.0	39.7	39.6	40.0
Private service-providing.....	33.2	33.1	33.2	33.2
Trade, transportation, and utilities.....	34.4	34.3	34.5	34.4
Wholesale trade.....	38.4	38.5	38.8	38.8
Retail trade.....	31.4	31.3	31.4	31.3
Transportation and warehousing.....	38.6	38.4	38.3	38.5
Utilities.....	41.7	41.6	42.3	42.3
Information.....	36.8	36.3	36.6	36.8
Financial activities.....	37.0	37.1	37.4	37.3
Professional and business services.....	35.8	35.7	35.8	35.8
Education and health services.....	32.8	32.7	32.7	32.6
Leisure and hospitality.....	25.9	25.8	25.8	25.9
Other services.....	31.7	31.5	31.6	31.7
AVERAGE OVERTIME HOURS				
Manufacturing.....	3.1	3.1	3.2	3.2
Durable goods.....	2.9	3.1	3.2	3.2
Nondurable goods.....	3.4	3.2	3.1	3.2

p Preliminary

ESTABLISHMENT DATA

Table B-3. Average hourly and weekly earnings of all employees on private nonfarm payrolls by industry sector, seasonally adjusted

Industry	Average hourly earnings				Average weekly earnings			
	Oct. 2010	Aug. 2011	Sept. 2011 ^P	Oct. 2011 ^P	Oct. 2010	Aug. 2011	Sept. 2011 ^P	Oct. 2011 ^P
Total private.....	\$22.77	\$23.08	\$23.14	\$23.19	\$ 781.01	\$ 789.34	\$ 793.70	\$ 795.42
Goods-producing.....	24.20	24.45	24.52	24.58	963.16	973.11	978.35	983.20
Mining and logging.....	27.71	28.06	28.28	28.23	1,208.16	1,240.25	1,252.80	1,267.53
Construction.....	25.25	25.48	25.50	25.48	964.55	973.34	981.75	973.34
Manufacturing.....	23.49	23.72	23.79	23.90	949.00	955.92	958.74	967.95
Durable goods.....	24.95	25.27	25.33	25.48	1,012.97	1,025.96	1,030.93	1,042.13
Nondurable goods.....	21.11	21.12	21.18	21.23	844.40	838.46	838.73	849.20
Private service-providing.....	22.43	22.76	22.81	22.86	744.68	753.36	757.29	758.95
Trade, transportation, and utilities.....	19.79	20.05	20.07	20.11	680.78	687.72	692.42	691.78
Wholesale trade.....	26.29	26.31	26.31	26.43	1,009.54	1,012.94	1,020.83	1,025.48
Retail trade.....	15.63	15.76	15.79	15.81	490.78	493.29	495.81	494.85
Transportation and warehousing.....	21.16	21.89	21.84	21.81	816.78	840.58	836.47	839.69
Utilities.....	32.84	33.74	34.00	33.97	1,369.43	1,403.58	1,438.20	1,436.93
Information.....	31.03	31.43	31.29	31.25	1,141.90	1,140.91	1,145.21	1,150.00
Financial activities.....	27.38	27.82	27.94	28.01	1,013.06	1,032.12	1,044.96	1,044.77
Professional and business services.....	27.47	27.85	27.91	28.02	983.43	994.25	999.18	1,003.12
Education and health services.....	23.15	23.63	23.67	23.73	759.32	772.70	774.01	773.60
Leisure and hospitality.....	13.12	13.23	13.27	13.28	339.81	341.33	342.37	343.95
Other services.....	20.36	20.52	20.53	20.55	645.41	646.38	648.75	651.44

p Preliminary

ESTABLISHMENT DATA

Table B-4. Indexes of aggregate weekly hours and payrolls for all employees on private nonfarm payrolls by industry sector, seasonally adjusted

[2007=100]

Industry	Index of aggregate weekly hours ¹					Index of aggregate weekly payrolls ²				
	Oct. 2010	Aug. 2011	Sept. 2011 ^P	Oct. 2011 ^P	Percent change from: Sept. 2011 - Oct. 2011 ^P	Oct. 2010	Aug. 2011	Sept. 2011 ^P	Oct. 2011 ^P	Percent change from: Sept. 2011 - Oct. 2011 ^P
Total private.....	92.6	93.6	94.1	94.2	0.1	100.5	103.0	103.8	104.1	0.3
Goods-producing.....	80.6	82.0	82.3	82.5	0.2	88.2	90.6	91.2	91.6	0.4
Mining and logging.....	100.6	111.1	112.1	114.3	2.0	111.9	125.2	127.2	129.5	1.8
Construction.....	72.6	72.6	73.6	72.7	-1.2	79.6	80.4	81.5	80.5	-1.2
Manufacturing.....	83.9	85.2	85.2	85.7	0.6	91.6	94.0	94.3	95.2	1.0
Durable goods.....	81.1	83.5	83.8	84.3	0.6	89.9	93.8	94.2	95.4	1.3
Nondurable goods.....	88.7	88.2	87.8	88.6	0.9	95.0	94.5	94.4	95.4	1.1
Private service-providing.....	95.9	96.9	97.4	97.5	0.1	104.2	106.9	107.6	108.0	0.4
Trade, transportation, and utilities.....	92.2	93.0	93.6	93.5	-0.1	98.2	100.4	101.1	101.2	0.1
Wholesale trade.....	91.6	93.2	93.8	94.0	0.2	100.5	102.3	103.0	103.6	0.6
Retail trade.....	92.2	92.7	93.1	92.9	-0.2	95.3	96.6	97.2	97.1	-0.1
Transportation and warehousing.....	92.7	93.9	93.8	94.5	0.7	99.5	104.4	103.9	104.5	0.6
Utilities.....	99.2	99.4	101.4	101.3	-0.1	107.6	110.8	113.9	113.7	-0.2
Information.....	90.6	87.1	88.9	89.3	0.4	100.1	97.5	99.1	99.3	0.2
Financial activities.....	92.9	93.1	93.7	93.5	-0.2	99.3	101.1	102.2	102.3	0.1
Professional and business services.....	94.4	96.8	97.3	97.5	0.2	105.0	109.2	110.1	110.7	0.5
Education and health services.....	105.1	106.6	106.9	106.8	-0.1	114.0	118.0	118.6	118.7	0.1
Leisure and hospitality.....	96.6	97.5	97.6	98.1	0.5	102.3	104.0	104.4	105.1	0.7
Other services.....	95.2	95.2	95.5	95.8	0.3	110.0	110.9	111.3	111.7	0.4

1 The indexes of aggregate weekly hours are calculated by dividing the current month's estimates of aggregate hours by the corresponding 2007 annual average aggregate hours. Aggregate hours estimates are the product of estimates of average weekly hours and employment.

2 The indexes of aggregate weekly payrolls are calculated by dividing the current month's estimates of aggregate weekly payrolls by the corresponding 2007 annual average aggregate weekly payrolls. Aggregate payrolls estimates are the product of estimates of average hourly earnings, average weekly hours, and employment.

p Preliminary

ESTABLISHMENT DATA

Table B-5. Employment of women on nonfarm payrolls by industry sector, seasonally adjusted

Industry	Women employees (in thousands)				Percent of all employees			
	Oct. 2010	Aug. 2011	Sept. 2011 ^P	Oct. 2011 ^P	Oct. 2010	Aug. 2011	Sept. 2011 ^P	Oct. 2011 ^P
Total nonfarm.....	64,609	64,911	64,952	65,018	49.7	49.4	49.4	49.4
Total private.....	51,950	52,376	52,431	52,491	48.2	47.9	47.9	47.9
Goods-producing.....	4,057	4,053	4,052	4,049	22.8	22.4	22.4	22.4
Mining and logging.....	99	107	107	109	13.5	13.4	13.3	13.5
Construction.....	710	709	711	710	12.9	12.8	12.8	12.9
Manufacturing.....	3,248	3,237	3,234	3,230	28.1	27.5	27.5	27.5
Durable goods.....	1,714	1,716	1,714	1,711	24.2	23.5	23.4	23.4
Nondurable goods.....	1,534	1,521	1,520	1,519	34.5	34.2	34.2	34.2
Private service-providing.....	47,893	48,323	48,379	48,442	53.3	53.0	53.0	53.0
Trade, transportation, and utilities.....	10,000	10,006	9,989	10,000	40.5	40.1	40.0	40.0
Wholesale trade.....	1,642.9	1,670.0	1,668.5	1,668.1	30.0	30.1	30.1	30.1
Retail trade.....	7,217.8	7,194.7	7,185.9	7,194.6	49.9	49.3	49.2	49.2
Transportation and warehousing.....	1,002.6	1,006.6	1,000.0	1,003.1	23.9	23.5	23.4	23.4
Utilities.....	136.3	134.4	134.6	134.4	24.8	24.3	24.3	24.3
Information.....	1,095	1,076	1,081	1,079	40.6	41.0	40.6	40.6
Financial activities.....	4,468	4,439	4,425	4,419	58.7	58.3	58.2	58.1
Professional and business services.....	7,456	7,656	7,675	7,705	44.5	44.4	44.4	44.5
Education and health services.....	15,181	15,373	15,413	15,433	77.1	76.7	76.7	76.7
Leisure and hospitality.....	6,826	6,890	6,916	6,928	52.2	52.0	52.2	52.2
Other services.....	2,867	2,883	2,880	2,878	52.9	52.8	52.8	52.8
Government.....	12,659	12,535	12,521	12,527	56.8	56.9	56.9	57.0

p Preliminary

ESTABLISHMENT DATA

Table B-6. Employment of production and nonsupervisory employees on private nonfarm payrolls by industry sector, seasonally adjusted¹

[In thousands]

Industry	Oct. 2010	Aug. 2011	Sept. 2011 ^p	Oct. 2011 ^p
Total private.....	88,785	90,034	90,227	90,319
Goods-producing.....	12,809	13,020	13,047	13,044
Mining and logging.....	550	601	603	607
Construction.....	4,187	4,171	4,195	4,182
Manufacturing.....	8,072	8,248	8,249	8,255
Durable goods.....	4,846	5,010	5,011	5,022
Nondurable goods.....	3,226	3,238	3,238	3,233
Private service-providing.....	75,976	77,014	77,180	77,275
Trade, transportation, and utilities.....	20,880	21,123	21,143	21,168
Wholesale trade.....	4,373.3	4,446.3	4,440.7	4,448.4
Retail trade.....	12,445.8	12,552.2	12,574.5	12,582.0
Transportation and warehousing.....	3,620.3	3,683.4	3,686.2	3,697.2
Utilities.....	440.9	441.2	441.4	440.0
Information.....	2,167	2,100	2,137	2,135
Financial activities.....	5,856	5,823	5,821	5,829
Professional and business services.....	13,724	14,184	14,218	14,241
Education and health services.....	17,275	17,548	17,596	17,626
Leisure and hospitality.....	11,535	11,672	11,699	11,707
Other services.....	4,539	4,564	4,566	4,569

¹ Data relate to production employees in mining and logging and manufacturing, construction employees in construction, and nonsupervisory employees in the service-providing industries. These groups account for approximately four-fifths of the total employment on private nonfarm payrolls.

^p Preliminary

ESTABLISHMENT DATA

Table B-7. Average weekly hours and overtime of production and nonsupervisory employees on private nonfarm payrolls by industry sector, seasonally adjusted¹

Industry	Oct. 2010	Aug. 2011	Sept. 2011 ^p	Oct. 2011 ^p
AVERAGE WEEKLY HOURS				
Total private.....	33.5	33.5	33.6	33.7
Goods-producing.....	40.6	40.8	40.8	40.9
Mining and logging.....	44.6	46.3	46.7	47.1
Construction.....	38.9	39.0	39.0	38.9
Manufacturing.....	41.2	41.3	41.3	41.5
Durable goods.....	41.4	41.7	41.8	41.8
Nondurable goods.....	40.9	40.6	40.7	40.9
Private service-providing.....	32.3	32.3	32.4	32.5
Trade, transportation, and utilities.....	33.4	33.6	33.6	33.7
Wholesale trade.....	38.2	38.4	38.6	38.7
Retail trade.....	30.2	30.4	30.4	30.5
Transportation and warehousing.....	37.4	37.7	37.6	37.7
Utilities.....	42.6	42.0	42.2	42.3
Information.....	36.3	35.9	36.1	36.2
Financial activities.....	36.3	36.3	36.5	36.6
Professional and business services.....	35.3	35.1	35.2	35.2
Education and health services.....	32.3	32.3	32.4	32.4
Leisure and hospitality.....	24.9	24.7	24.7	24.9
Other services.....	30.8	30.7	30.7	30.8
AVERAGE OVERTIME HOURS				
Manufacturing.....	3.9	4.1	4.0	4.1
Durable goods.....	3.9	4.2	4.1	4.2
Nondurable goods.....	4.0	4.0	3.9	4.0

¹ Data relate to production employees in mining and logging and manufacturing, construction employees in construction, and nonsupervisory employees in the service-providing industries. These groups account for approximately four-fifths of the total employment on private nonfarm payrolls.

^p Preliminary

ESTABLISHMENT DATA

Table B-8. Average hourly and weekly earnings of production and nonsupervisory employees on private nonfarm payrolls by industry sector, seasonally adjusted¹

Industry	Average hourly earnings				Average weekly earnings			
	Oct. 2010	Aug. 2011	Sept. 2011 ^P	Oct. 2011 ^P	Oct. 2010	Aug. 2011	Sept. 2011 ^P	Oct. 2011 ^P
Total private.....	\$19.23	\$19.47	\$19.50	\$19.53	\$ 644.21	\$ 652.25	\$ 655.20	\$ 658.16
Goods-producing.....	20.41	20.71	20.68	20.74	828.65	844.97	843.74	848.27
Mining and logging.....	23.86	24.54	24.41	24.47	1,064.16	1,136.20	1,139.95	1,152.54
Construction.....	23.38	23.79	23.74	23.72	909.48	927.81	925.86	922.71
Manufacturing.....	18.71	18.92	18.91	19.01	770.85	781.40	780.98	788.92
Durable goods.....	19.88	20.08	20.07	20.20	823.03	837.34	838.93	844.36
Nondurable goods.....	16.92	17.07	17.06	17.11	692.03	693.04	694.34	699.80
Private service-providing.....	18.98	19.21	19.25	19.28	613.05	620.48	623.70	626.60
Trade, transportation, and utilities.....	16.99	17.15	17.19	17.24	567.47	576.24	577.58	580.99
Wholesale trade.....	21.82	21.98	21.99	22.06	833.52	844.03	848.81	853.72
Retail trade.....	13.38	13.46	13.47	13.56	404.08	409.18	409.49	413.58
Transportation and warehousing.....	19.22	19.52	19.62	19.58	718.83	735.90	737.71	738.17
Utilities.....	30.38	30.94	31.19	30.91	1,294.19	1,299.48	1,316.22	1,307.49
Information.....	26.22	26.53	26.66	26.74	951.79	952.43	962.43	967.99
Financial activities.....	21.68	21.75	21.86	21.92	786.98	789.53	797.89	802.27
Professional and business services.....	23.00	23.14	23.14	23.22	811.90	812.21	814.53	817.34
Education and health services.....	20.33	20.83	20.85	20.86	656.66	672.81	675.54	675.86
Leisure and hospitality.....	11.30	11.47	11.45	11.44	281.37	283.31	282.82	284.86
Other services.....	17.19	17.25	17.27	17.28	529.45	529.58	530.19	532.22

¹ Data relate to production employees in mining and logging and manufacturing, construction employees in construction, and nonsupervisory employees in the service-providing industries. These groups account for approximately four-fifths of the total employment on private nonfarm payrolls.

p Preliminary

ESTABLISHMENT DATA

Table B-9. Indexes of aggregate weekly hours and payrolls for production and nonsupervisory employees on private nonfarm payrolls by industry sector, seasonally adjusted¹

[2002=100]

Industry	Index of aggregate weekly hours ²					Index of aggregate weekly payrolls ³				
	Oct. 2010	Aug. 2011	Sept. 2011 ^P	Oct. 2011 ^P	Percent change from: Sept. 2011 - Oct. 2011 ^P	Oct. 2010	Aug. 2011	Sept. 2011 ^P	Oct. 2011 ^P	Percent change from: Sept. 2011 - Oct. 2011 ^P
Total private.....	99.4	100.8	101.3	101.7	0.4	127.7	131.1	132.0	132.7	0.5
Goods-producing.....	79.5	81.2	81.3	81.5	0.2	99.3	102.9	103.0	103.5	0.5
Mining and logging.....	130.4	147.9	149.6	151.9	1.5	180.9	211.0	212.4	216.2	1.8
Construction.....	81.6	81.4	81.9	81.5	-0.5	103.0	104.6	105.0	104.3	-0.7
Manufacturing.....	76.3	78.2	78.2	78.6	0.5	93.4	96.7	96.7	97.7	1.0
Durable goods.....	75.4	78.5	78.7	78.9	0.3	93.5	98.4	98.6	99.5	0.9
Nondurable goods.....	77.7	77.5	77.6	77.9	0.4	93.0	93.4	93.6	94.2	0.6
Private service-providing.....	104.9	106.4	106.9	107.4	0.5	136.5	140.1	141.1	142.0	0.6
Trade, transportation, and utilities.....	97.2	98.9	99.0	99.4	0.4	117.8	121.0	121.4	122.3	0.7
Wholesale trade.....	98.4	100.5	100.9	101.4	0.5	126.5	130.2	130.8	131.7	0.7
Retail trade.....	95.1	96.6	96.8	97.1	0.3	109.1	111.4	111.7	112.9	1.1
Transportation and warehousing.....	101.9	104.5	104.3	104.9	0.6	124.3	129.4	129.9	130.3	0.3
Utilities.....	96.1	94.8	95.3	95.2	-0.1	121.8	122.4	124.0	122.8	-1.0
Information.....	89.8	86.1	88.1	88.2	0.1	116.6	113.0	116.2	116.8	0.5
Financial activities.....	101.7	101.2	101.7	102.1	0.4	136.4	136.0	137.4	138.4	0.7
Professional and business services.....	108.6	111.6	112.2	112.3	0.1	148.6	153.6	154.4	155.2	0.5
Education and health services.....	120.4	122.3	123.0	123.2	0.2	160.9	167.4	168.6	168.9	0.2
Leisure and hospitality.....	105.3	105.7	105.9	106.8	0.8	135.1	137.6	137.7	138.8	0.8
Other services.....	98.1	98.3	98.3	98.7	0.4	122.8	123.5	123.7	124.3	0.5

1 Data relate to production employees in mining and logging and manufacturing, construction employees in construction, and nonsupervisory employees in the service-providing industries. These groups account for approximately four-fifths of the total employment on private nonfarm payrolls.

2 The indexes of aggregate weekly hours are calculated by dividing the current month's estimates of aggregate hours by the corresponding 2002 annual average aggregate hours. Aggregate hours estimates are the product of estimates of average weekly hours and employment.

3 The indexes of aggregate weekly payrolls are calculated by dividing the current month's estimates of aggregate weekly payrolls by the corresponding 2002 annual average aggregate weekly payrolls. Aggregate payrolls estimates are the product of estimates of average hourly earnings, average weekly hours, and employment.

p Preliminary