

**Transmission of material in this release is embargoed until 8:30 a.m. (EDT) Friday, September 2, 2011**

USDL-11-1277

Technical information:

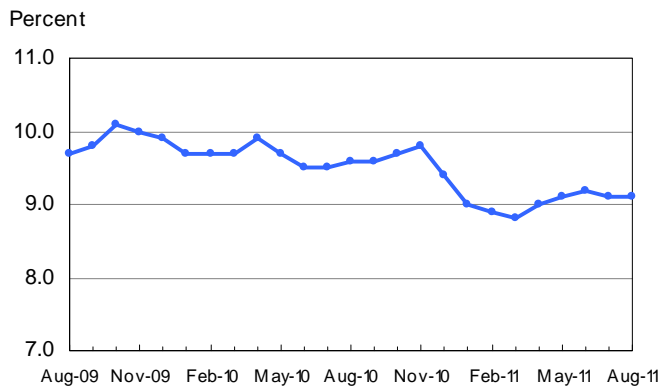
Household data: (202) 691-6378 • cpsinfo@bls.gov • www.bls.gov/cps  
Establishment data: (202) 691-6555 • cesinfo@bls.gov • www.bls.gov/ces

Media contact: (202) 691-5902 • PressOffice@bls.gov

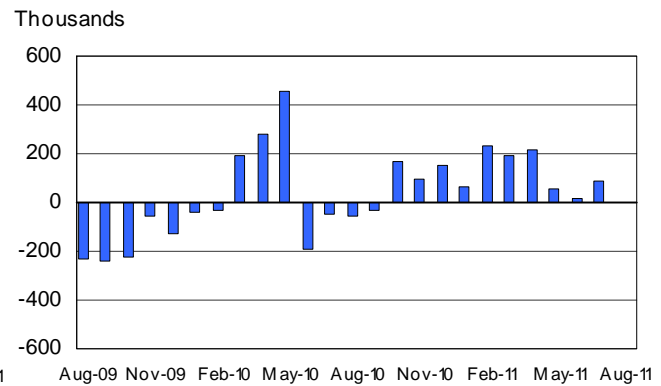
**THE EMPLOYMENT SITUATION – AUGUST 2011**

**Nonfarm payroll employment** was unchanged (0) in August, and the **unemployment rate** held at 9.1 percent, the U.S. Bureau of Labor Statistics reported today. Employment in most major industries changed little over the month. Health care continued to add jobs, and a decline in information employment reflected a strike. Government employment continued to trend down, despite the return of workers from a partial government shutdown in Minnesota.

**Chart 1. Unemployment rate, seasonally adjusted, August 2009 – August 2011**



**Chart 2. Nonfarm payroll employment over-the-month change, seasonally adjusted, August 2009 – August 2011**



**Household Survey Data**

The number of **unemployed persons**, at 14.0 million, was essentially unchanged in August, and the **unemployment rate** held at 9.1 percent. The rate has shown little change since April. (See table A-1.)

Among the **major worker groups**, the unemployment rates for adult men (8.9 percent), adult women (8.0 percent), teenagers (25.4 percent), whites (8.0 percent), blacks (16.7 percent), and Hispanics (11.3 percent) showed little or no change in August. The jobless rate for Asians was 7.1 percent, not seasonally adjusted. (See tables A-1, A-2, and A-3.)

The number of **long-term unemployed** (those jobless for 27 weeks and over) was about unchanged at 6.0 million in August and accounted for 42.9 percent of the unemployed. (See table A-12.)

The labor force rose to 153.6 million in August. Both the **civilian labor force participation rate**, at 64.0 percent, and the **employment-population ratio**, at 58.2 percent, were little changed. (See table A-1.)

The number of persons employed **part time for economic reasons** (sometimes referred to as involuntary part-time workers) rose from 8.4 million to 8.8 million in August. These individuals were working part time because their hours had been cut back or because they were unable to find a full-time job. (See table A-8.)

About 2.6 million persons were **marginally attached to the labor force** in August, up from 2.4 million a year earlier. (The data are not seasonally adjusted.) These individuals were not in the labor force, wanted and were available for work, and had looked for a job sometime in the prior 12 months. They were not counted as unemployed because they had not searched for work in the 4 weeks preceding the survey. (See table A-16.)

Among the marginally attached, there were 977,000 **discouraged workers** in August, down by 133,000 from a year earlier. (The data are not seasonally adjusted.) Discouraged workers are persons not currently looking for work because they believe no jobs are available for them. The remaining 1.6 million persons marginally attached to the labor force in August had not searched for work in the 4 weeks preceding the survey for reasons such as school attendance or family responsibilities. (See table A-16.)

### **Establishment Survey Data**

Total **nonfarm payroll employment**, at 131.1 million, was unchanged (0) in August. Employment changed little in most major private-sector industries. (See table B-1.)

**Health care** employment rose by 30,000 in August. Ambulatory health care services and hospitals added 18,000 and 8,000 jobs, respectively. Over the past 12 months, health care employment has grown by 306,000.

Employment in **mining** continued to trend up in August (+6,000). Since reaching a trough in October 2009, employment in mining has risen by 144,000, with mining support activities accounting for most of the gain.

Within **professional and business services**, computer systems design and related services added 8,000 jobs in August. Employment in temporary help services changed little over the month (+5,000) and has shown little movement on net so far this year.

Employment in the **information** industry declined by 48,000 in August. About 45,000 workers in the telecommunications industry were on strike and thus off company payrolls during the survey reference period.

**Manufacturing** employment was essentially unchanged in August (-3,000), following a gain of 36,000 in July. For the past 4 months, manufacturing has added an average of 14,000 jobs per month, compared with an average of 35,000 jobs per month in the first 4 months of the year.

Elsewhere in the private sector, employment in **construction; trade, transportation, and utilities; financial activities; and leisure and hospitality** changed little over the month.

**Government** employment continued to trend down over the month (-17,000). Despite the return of about 22,000 workers from a partial government shutdown in Minnesota, employment in state government changed little in August (+5,000). Employment in local government continued to decline. Since employment peaked in September 2008, local government has lost 550,000 jobs.

The **average workweek for all employees** on private nonfarm payrolls edged down by 0.1 hour over the month to 34.2 hours. The manufacturing workweek was 40.3 hours for the third consecutive month; factory overtime increased by 0.1 hour over the month to 3.2 hours. The average workweek for **production and nonsupervisory employees** on private nonfarm payrolls edged down to 33.5 hours in August, after holding at 33.6 hours for the prior 6 months. (See tables B-2 and B-7.)

In August, **average hourly earnings for all employees** on private nonfarm payrolls decreased by 3 cents, or 0.1 percent, to \$23.09. This decline followed an 11-cent gain in July. Over the past 12 months, average hourly earnings have increased by 1.9 percent. In August, average hourly earnings of private-sector **production and nonsupervisory employees** decreased by 2 cents, or 0.1 percent, to \$19.47. (See tables B-3 and B-8.)

The change in total nonfarm payroll employment for June was revised from +46,000 to +20,000, and the change for July was revised from +117,000 to +85,000.

**The Employment Situation for September is scheduled to be released on Friday, October 7, 2011, at 8:30 a.m. (EDT).**

**2011 CES Preliminary Benchmark Revision to be released on  
September 29, 2011**

Each year, the Current Employment Statistics (CES) survey estimates are benchmarked to comprehensive counts of employment from the Quarterly Census of Employment and Wages (QCEW) for the month of March. These counts are derived from state unemployment insurance (UI) tax records that nearly all employers are required to file. On September 29, 2011, at 8:30 a.m., the Bureau of Labor Statistics (BLS) will release the preliminary estimate of the upcoming annual benchmark revision to the establishment survey employment series. This is the same day the First Quarter 2011 data from the QCEW will be issued. Preliminary benchmark revisions for all major industry sectors, as well as total nonfarm and total private levels, will be available on the BLS Web site at [www.bls.gov/ces/cesprelbnk.htm](http://www.bls.gov/ces/cesprelbnk.htm).

The final benchmark revision will be issued on February 3, 2012, with the publication of the January 2012 Employment Situation news release.

# HOUSEHOLD DATA

## Summary table A. Household data, seasonally adjusted

[Numbers in thousands]

Category	Aug. 2010	June 2011	July 2011	Aug. 2011	Change from: July 2011- Aug. 2011
<b>Employment status</b>					
Civilian noninstitutional population.....	238,099	239,489	239,671	239,871	200
Civilian labor force.....	154,117	153,421	153,228	153,594	366
Participation rate.....	64.7	64.1	63.9	64.0	0.1
Employed.....	139,267	139,334	139,296	139,627	331
Employment-population ratio.....	58.5	58.2	58.1	58.2	0.1
Unemployed.....	14,849	14,087	13,931	13,967	36
Unemployment rate.....	9.6	9.2	9.1	9.1	0.0
Not in labor force.....	83,983	86,069	86,443	86,278	-165
<b>Unemployment rates</b>					
Total, 16 years and over.....	9.6	9.2	9.1	9.1	0.0
Adult men (20 years and over).....	9.8	9.1	9.0	8.9	-0.1
Adult women (20 years and over).....	8.0	8.0	7.9	8.0	0.1
Teenagers (16 to 19 years).....	26.2	24.5	25.0	25.4	0.4
White.....	8.7	8.1	8.1	8.0	-0.1
Black or African American.....	16.2	16.2	15.9	16.7	0.8
Asian (not seasonally adjusted).....	7.2	6.8	7.7	7.1	-
Hispanic or Latino ethnicity.....	12.1	11.6	11.3	11.3	0.0
Total, 25 years and over.....	8.3	8.0	7.8	7.8	0.0
Less than a high school diploma.....	14.2	14.3	15.0	14.3	-0.7
High school graduates, no college.....	10.2	10.0	9.3	9.6	0.3
Some college or associate degree.....	8.7	8.4	8.3	8.2	-0.1
Bachelor's degree and higher.....	4.6	4.4	4.3	4.3	0.0
<b>Reason for unemployment</b>					
Job losers and persons who completed temporary jobs.....	9,285	8,261	8,215	8,203	-12
Job leavers.....	868	965	928	963	35
Reentrants.....	3,418	3,430	3,410	3,532	122
New entrants.....	1,260	1,222	1,270	1,241	-29
<b>Duration of unemployment</b>					
Less than 5 weeks.....	2,756	3,076	2,689	2,755	66
5 to 14 weeks.....	3,604	2,972	3,088	3,050	-38
15 to 26 weeks.....	2,210	1,836	1,965	2,239	274
27 weeks and over.....	6,261	6,289	6,185	6,034	-151
<b>Employed persons at work part time</b>					
Part time for economic reasons.....	8,883	8,552	8,396	8,826	430
Slack work or business conditions.....	6,357	5,806	5,687	5,833	146
Could only find part-time work.....	2,379	2,401	2,517	2,736	219
Part time for noneconomic reasons.....	18,566	18,470	18,258	18,208	-50
<b>Persons not in the labor force (not seasonally adjusted)</b>					
Marginally attached to the labor force.....	2,370	2,680	2,785	2,575	-
Discouraged workers.....	1,110	982	1,119	977	-

- Over-the-month changes are not displayed for not seasonally adjusted data.

NOTE: Persons whose ethnicity is identified as Hispanic or Latino may be of any race. Detail for the seasonally adjusted data shown in this table will not necessarily add to totals because of the independent seasonal adjustment of the various series. Updated population controls are introduced annually with the release of January data.

**ESTABLISHMENT DATA**  
**Summary table B. Establishment data, seasonally adjusted**

Category	Aug. 2010	June 2011	July 2011 <sup>p</sup>	Aug. 2011 <sup>p</sup>
<b>EMPLOYMENT BY SELECTED INDUSTRY</b> (Over-the-month change, in thousands)				
Total nonfarm.....	-59	20	85	0
Total private.....	110	75	156	17
Goods-producing.....	-1	16	52	-3
Mining and logging.....	8	9	9	5
Construction.....	20	-7	7	-5
Manufacturing.....	-29	14	36	-3
Durable goods <sup>1</sup> .....	-22	17	27	-3
Motor vehicles and parts.....	-20.2	1.2	11.0	-2.8
Nondurable goods.....	-7	-3	9	0
Private service-providing <sup>1</sup> .....	111	59	104	20
Wholesale trade.....	0.7	4.7	2.0	1.6
Retail trade.....	-6.7	11.5	26.4	-7.8
Transportation and warehousing.....	-0.7	9.2	-1.0	-2.4
Information.....	5	-2	-3	-48
Financial activities.....	-2	-16	-7	3
Professional and business services <sup>1</sup> .....	30	0	28	28
Temporary help services.....	16.9	-7.0	1.2	4.7
Education and health services <sup>1</sup> .....	41	18	46	34
Health care and social assistance.....	34.9	18.8	32.9	35.5
Leisure and hospitality.....	38	27	12	2
Other services.....	7	6	1	9
Government.....	-169	-55	-71	-17
<b>WOMEN AND PRODUCTION AND NONSUPERVISORY EMPLOYEES</b> AS A PERCENT OF ALL EMPLOYEES <sup>2</sup>				
Total nonfarm women employees.....	49.7	49.5	49.4	49.4
Total private women employees.....	48.2	48.0	47.9	47.9
Total private production and nonsupervisory employees.....	82.4	82.4	82.4	82.4
<b>HOURS AND EARNINGS</b> ALL EMPLOYEES				
<b>Total private</b>				
Average weekly hours.....	34.2	34.3	34.3	34.2
Average hourly earnings.....	\$ 22.67	\$ 23.01	\$ 23.12	\$ 23.09
Average weekly earnings.....	\$ 775.31	\$ 789.24	\$ 793.02	\$ 789.68
Index of aggregate weekly hours (2007=100) <sup>3</sup> .....	92.1	93.7	93.8	93.6
Over-the-month percent change.....	0.1	-0.2	0.1	-0.2
Index of aggregate weekly payrolls (2007=100) <sup>4</sup> .....	99.6	102.8	103.4	103.0
Over-the-month percent change.....	0.4	-0.3	0.6	-0.4
<b>HOURS AND EARNINGS</b> PRODUCTION AND NONSUPERVISORY EMPLOYEES				
<b>Total private</b>				
Average weekly hours.....	33.5	33.6	33.6	33.5
Average hourly earnings.....	\$ 19.13	\$ 19.43	\$ 19.49	\$ 19.47
Average weekly earnings.....	\$ 640.86	\$ 652.85	\$ 654.86	\$ 652.25
Index of aggregate weekly hours (2002=100) <sup>3</sup> .....	99.1	100.8	101.0	100.7
Over-the-month percent change.....	0.1	0.0	0.2	-0.3
Index of aggregate weekly payrolls (2002=100) <sup>4</sup> .....	126.7	130.9	131.5	131.0
Over-the-month percent change.....	0.3	0.1	0.5	-0.4
<b>DIFFUSION INDEX</b> (Over 1-month span) <sup>5</sup>				
Total private.....	53.7	56.2	57.7	52.2
Manufacturing.....	44.4	57.4	56.8	42.0

1 Includes other industries, not shown separately.

2 Data relate to production employees in mining and logging and manufacturing, construction employees in construction, and nonsupervisory employees in the service-providing industries.

3 The indexes of aggregate weekly hours are calculated by dividing the current month's estimates of aggregate hours by the corresponding annual average aggregate hours.

4 The indexes of aggregate weekly payrolls are calculated by dividing the current month's estimates of aggregate weekly payrolls by the corresponding annual average aggregate weekly payrolls.

5 Figures are the percent of industries with employment increasing plus one-half of the industries with unchanged employment, where 50 percent indicates an equal balance between industries with increasing and decreasing employment.

p Preliminary

## **Frequently Asked Questions about Employment and Unemployment Estimates**

### **Why are there two monthly measures of employment?**

The household survey and establishment survey both produce sample-based estimates of employment and both have strengths and limitations. The establishment survey employment series has a smaller margin of error on the measurement of month-to-month change than the household survey because of its much larger sample size. An over-the-month employment change of about 100,000 is statistically significant in the establishment survey, while the threshold for a statistically significant change in the household survey is about 400,000. However, the household survey has a more expansive scope than the establishment survey because it includes the self-employed, unpaid family workers, agricultural workers, and private household workers, who are excluded by the establishment survey. The household survey also provides estimates of employment for demographic groups.

### **Are undocumented immigrants counted in the surveys?**

It is likely that both surveys include at least some undocumented immigrants. However, neither the establishment nor the household survey is designed to identify the legal status of workers. Therefore, it is not possible to determine how many are counted in either survey. The establishment survey does not collect data on the legal status of workers. The household survey does include questions which identify the foreign and native born, but it does not include questions about the legal status of the foreign born.

### **Why does the establishment survey have revisions?**

The establishment survey revises published estimates to improve its data series by incorporating additional information that was not available at the time of the initial publication of the estimates. The establishment survey revises its initial monthly estimates twice, in the immediately succeeding 2 months, to incorporate additional sample receipts from respondents in the survey and recalculated seasonal adjustment factors. For more information on the monthly revisions, please visit [www.bls.gov/ces/cesrevinfo.htm](http://www.bls.gov/ces/cesrevinfo.htm).

On an annual basis, the establishment survey incorporates a benchmark revision that re-anchors estimates to nearly complete employment counts available from unemployment insurance tax records. The benchmark helps to control for sampling and modeling errors in the estimates. For more information on the annual benchmark revision, please visit [www.bls.gov/web/cesbmart.htm](http://www.bls.gov/web/cesbmart.htm).

### **Does the establishment survey sample include small firms?**

Yes; about 40 percent of the establishment survey sample is comprised of business establishments with fewer than 20 employees. The establishment survey sample is designed to maximize the reliability of the total nonfarm employment estimate; firms from all size classes and industries are appropriately sampled to achieve that goal.

### **Does the establishment survey account for employment from new businesses?**

Yes; monthly establishment survey estimates include an adjustment to account for the net employment change generated by business births and deaths. The adjustment comes from an econometric model that forecasts the monthly net jobs impact of business births and deaths based on the actual past values of the net impact that can be observed with a lag from the Quarterly Census of Employment and Wages. The

establishment survey uses modeling rather than sampling for this purpose because the survey is not immediately able to bring new businesses into the sample. There is an unavoidable lag between the birth of a new firm and its appearance on the sampling frame and availability for selection. BLS adds new businesses to the survey twice a year.

**Is the count of unemployed persons limited to just those people receiving unemployment insurance benefits?**

No; the estimate of unemployment is based on a monthly sample survey of households. All persons who are without jobs and are actively seeking and available to work are included among the unemployed. (People on temporary layoff are included even if they do not actively seek work.) There is no requirement or question relating to unemployment insurance benefits in the monthly survey.

**Does the official unemployment rate exclude people who have stopped looking for work?**

Yes; however, there are separate estimates of persons outside the labor force who want a job, including those who have stopped looking because they believe no jobs are available (discouraged workers). In addition, alternative measures of labor underutilization (some of which include discouraged workers and other groups not officially counted as unemployed) are published each month in The Employment Situation news release.

**How can unusually severe weather affect employment and hours estimates?**

In the establishment survey, the reference period is the pay period that includes the 12<sup>th</sup> of the month. Unusually severe weather is more likely to have an impact on average weekly hours than on employment. Average weekly hours are estimated for paid time during the pay period, including pay for holidays, sick leave, or other time off. The impact of severe weather on hours estimates typically, but not always, results in a reduction in average weekly hours. For example, some employees may be off work for part of the pay period and not receive pay for the time missed, while some workers, such as those dealing with cleanup or repair, may work extra hours.

In order for severe weather conditions to reduce the estimate of payroll employment, employees have to be off work without pay for the entire pay period. About half of all employees in the payroll survey have a 2-week, semi-monthly, or monthly pay period. Employees who receive pay for any part of the pay period, even 1 hour, are counted in the payroll employment figures. It is not possible to quantify the effect of extreme weather on estimates of employment from the establishment survey.

In the household survey, the reference period is generally the calendar week that includes the 12<sup>th</sup> of the month. Persons who miss the entire week's work for weather-related events are counted as employed whether or not they are paid for the time off. The household survey collects data on the number of persons who usually work full time but had reduced hours, or had a job but were not at work the entire week, due to bad weather. Current and historical data are available on the household survey's most requested statistics page at <http://data.bls.gov/cgi-bin/surveymost?ln>.

# Technical Note

This news release presents statistics from two major surveys, the Current Population Survey (household survey) and the Current Employment Statistics survey (establishment survey). The household survey provides information on the labor force, employment, and unemployment that appears in the "A" tables, marked HOUSEHOLD DATA. It is a sample survey of about 60,000 households conducted by the U.S. Census Bureau for the U.S. Bureau of Labor Statistics (BLS).

The establishment survey provides information on employment, hours, and earnings of employees on nonfarm payrolls; the data appear in the "B" tables, marked ESTABLISHMENT DATA. BLS collects these data each month from the payroll records of a sample of nonagricultural business establishments. The sample includes about 140,000 businesses and government agencies representing approximately 440,000 worksites and is drawn from a sampling frame of roughly 9 million unemployment insurance tax accounts. The active sample includes approximately one-third of all nonfarm payroll employees.

For both surveys, the data for a given month relate to a particular week or pay period. In the household survey, the reference period is generally the calendar week that contains the 12th day of the month. In the establishment survey, the reference period is the pay period including the 12th, which may or may not correspond directly to the calendar week.

## Coverage, definitions, and differences between surveys

**Household survey.** The sample is selected to reflect the entire civilian noninstitutional population. Based on responses to a series of questions on work and job search activities, each person 16 years and over in a sample household is classified as employed, unemployed, or not in the labor force.

People are classified as *employed* if they did any work at all as paid employees during the reference week; worked in their own business, profession, or on their own farm; or worked without pay at least 15 hours in a family business or farm. People are also counted as employed if they were temporarily absent from their jobs because of illness, bad weather, vacation, labor-management disputes, or personal reasons.

People are classified as *unemployed* if they meet all of the following criteria: they had no employment during the reference week; they were available for work at that time; and they made specific efforts to find employment sometime during the 4-week period ending with the reference week. Persons laid off from a job and expecting recall need not be looking for work to be counted as unemployed. The unemployment data derived from the household survey in no way depend upon the eligibility for or receipt of unemployment insurance benefits.

The *civilian labor force* is the sum of employed and

unemployed persons. Those not classified as employed or unemployed are *not in the labor force*. The *unemployment rate* is the number unemployed as a percent of the labor force. The *labor force participation rate* is the labor force as a percent of the population, and the *employment-population ratio* is the employed as a percent of the population. Additional information about the household survey can be found at [www.bls.gov/cps/documentation.htm](http://www.bls.gov/cps/documentation.htm).

**Establishment survey.** The sample establishments are drawn from private nonfarm businesses such as factories, offices, and stores, as well as from federal, state, and local government entities. *Employees on nonfarm payrolls* are those who received pay for any part of the reference pay period, including persons on paid leave. Persons are counted in each job they hold. *Hours and earnings* data are produced for the private sector for all employees and for production and nonsupervisory employees. *Production and nonsupervisory employees* are defined as production and related employees in manufacturing and mining and logging, construction workers in construction, and non-supervisory employees in private service-providing industries.

Industries are classified on the basis of an establishment's principal activity in accordance with the 2007 version of the North American Industry Classification System. Additional information about the establishment survey can be found at [www.bls.gov/ces/#technical](http://www.bls.gov/ces/#technical).

**Differences in employment estimates.** The numerous conceptual and methodological differences between the household and establishment surveys result in important distinctions in the employment estimates derived from the surveys. Among these are:

- The household survey includes agricultural workers, the self-employed, unpaid family workers, and private household workers among the employed. These groups are excluded from the establishment survey.
- The household survey includes people on unpaid leave among the employed. The establishment survey does not.
- The household survey is limited to workers 16 years of age and older. The establishment survey is not limited by age.
- The household survey has no duplication of individuals, because individuals are counted only once, even if they hold more than one job. In the establishment survey, employees working at more than one job and thus appearing on more than one payroll are counted separately for each appearance.



## Seasonal adjustment

Over the course of a year, the size of the nation's labor force and the levels of employment and unemployment undergo regularly occurring fluctuations. These events may result from seasonal changes in weather, major holidays, and the opening and closing of schools. The effect of such seasonal variation can be very large.

Because these seasonal events follow a more or less regular pattern each year, their influence on the level of a series can be tempered by adjusting for regular seasonal variation. These adjustments make nonseasonal developments, such as declines in employment or increases in the participation of women in the labor force, easier to spot. For example, in the household survey, the large number of youth entering the labor force each June is likely to obscure any other changes that have taken place relative to May, making it difficult to determine if the level of economic activity has risen or declined. Similarly, in the establishment survey, payroll employment in education declines by about 20 percent at the end of the spring term and later rises with the start of the fall term, obscuring the underlying employment trends in the industry. Because seasonal employment changes at the end and beginning of the school year can be estimated, the statistics can be adjusted to make underlying employment patterns more discernable. The seasonally adjusted figures provide a more useful tool with which to analyze changes in month-to-month economic activity.

Many seasonally adjusted series are independently adjusted in both the household and establishment surveys. However, the adjusted series for many major estimates, such as total payroll employment, employment in most major sectors, total employment, and unemployment are computed by aggregating independently adjusted component series. For example, total unemployment is derived by summing the adjusted series for four major age-sex components; this differs from the unemployment estimate that would be obtained by directly adjusting the total or by combining the duration, reasons, or more detailed age categories.

For both the household and establishment surveys, a concurrent seasonal adjustment methodology is used in which new seasonal factors are calculated each month using all relevant data, up to and including the data for the current month. In the household survey, new seasonal factors are used to adjust only the current month's data. In the establishment survey, however, new seasonal factors are used each month to adjust the three most recent monthly estimates. The prior 2 months are routinely revised to incorporate additional sample reports and recalculated seasonal adjustment factors. In both surveys, 5-year revisions to historical data are made once a year.

## Reliability of the estimates

Statistics based on the household and establishment surveys are subject to both sampling and nonsampling error. When a sample rather than the entire population is

surveyed, there is a chance that the sample estimates may differ from the "true" population values they represent. The exact difference, or *sampling error*, varies depending on the particular sample selected, and this variability is measured by the standard error of the estimate. There is about a 90-percent chance, or level of confidence, that an estimate based on a sample will differ by no more than 1.6 standard errors from the "true" population value because of sampling error. BLS analyses are generally conducted at the 90-percent level of confidence.

For example, the confidence interval for the monthly change in total nonfarm employment from the establishment survey is on the order of plus or minus 100,000. Suppose the estimate of nonfarm employment increases by 50,000 from one month to the next. The 90-percent confidence interval on the monthly change would range from -50,000 to +150,000 (50,000 +/- 100,000). These figures do not mean that the sample results are off by these magnitudes, but rather that there is about a 90-percent chance that the "true" over-the-month change lies within this interval. Since this range includes values of less than zero, we could not say with confidence that nonfarm employment had, in fact, increased that month. If, however, the reported nonfarm employment rise was 250,000, then all of the values within the 90-percent confidence interval would be greater than zero. In this case, it is likely (at least a 90-percent chance) that nonfarm employment had, in fact, risen that month. At an unemployment rate of around 5.5 percent, the 90-percent confidence interval for the monthly change in unemployment as measured by the household survey is about +/- 280,000, and for the monthly change in the unemployment rate it is about +/- 0.19 percentage point.

In general, estimates involving many individuals or establishments have lower standard errors (relative to the size of the estimate) than estimates which are based on a small number of observations. The precision of estimates also is improved when the data are cumulated over time, such as for quarterly and annual averages.

The household and establishment surveys are also affected by *nonsampling error*, which can occur for many reasons, including the failure to sample a segment of the population, inability to obtain information for all respondents in the sample, inability or unwillingness of respondents to provide correct information on a timely basis, mistakes made by respondents, and errors made in the collection or processing of the data.

For example, in the establishment survey, estimates for the most recent 2 months are based on incomplete returns; for this reason, these estimates are labeled preliminary in the tables. It is only after two successive revisions to a monthly estimate, when nearly all sample reports have been received, that the estimate is considered final.

Another major source of nonsampling error in the establishment survey is the inability to capture, on a timely basis, employment generated by new firms. To correct for this systematic underestimation of employment growth, an estimation procedure with two components is used to account for business births. The first component excludes

employment losses from business deaths from sample-based estimation in order to offset the missing employment gains from business births. This is incorporated into the sample-based estimation procedure by simply not reflecting sample units going out of business, but imputing to them the same employment trend as the other firms in the sample. This procedure accounts for most of the net birth/death employment.

The second component is an ARIMA time series model designed to estimate the residual net birth/death employment not accounted for by the imputation. The historical time series used to create and test the ARIMA model was derived from the unemployment insurance universe micro-level database, and reflects the actual residual net of births and deaths over the past 5 years.

The sample-based estimates from the establishment survey are adjusted once a year (on a lagged basis) to

universe counts of payroll employment obtained from administrative records of the unemployment insurance program. The difference between the March sample-based employment estimates and the March universe counts is known as a benchmark revision, and serves as a rough proxy for total survey error. The new benchmarks also incorporate changes in the classification of industries. Over the past decade, absolute benchmark revisions for total nonfarm employment have averaged 0.3 percent, with a range from -0.7 to 0.6 percent.

#### **Other information**

Information in this release will be made available to sensory impaired individuals upon request. Voice phone: (202) 691-5200; Federal Relay Service: (800) 877-8339.

# HOUSEHOLD DATA

## Table A-1. Employment status of the civilian population by sex and age

[Numbers in thousands]

Employment status, sex, and age	Not seasonally adjusted			Seasonally adjusted <sup>1</sup>					
	Aug. 2010	July 2011	Aug. 2011	Aug. 2010	Apr. 2011	May 2011	June 2011	July 2011	Aug. 2011
<b>TOTAL</b>									
Civilian noninstitutional population.....	238,099	239,671	239,871	238,099	239,146	239,313	239,489	239,671	239,871
Civilian labor force.....	154,678	154,812	154,344	154,117	153,421	153,693	153,421	153,228	153,594
Participation rate.....	65.0	64.6	64.3	64.7	64.2	64.2	64.1	63.9	64.0
Employed.....	139,919	140,384	140,335	139,267	139,674	139,779	139,334	139,296	139,627
Employment-population ratio.....	58.8	58.6	58.5	58.5	58.4	58.4	58.2	58.1	58.2
Unemployed.....	14,759	14,428	14,008	14,849	13,747	13,914	14,087	13,931	13,967
Unemployment rate.....	9.5	9.3	9.1	9.6	9.0	9.1	9.2	9.1	9.1
Not in labor force.....	83,421	84,859	85,528	83,983	85,725	85,620	86,069	86,443	86,278
Persons who currently want a job.....	6,083	6,810	6,493	6,039	6,539	6,227	6,537	6,575	6,493
<b>Men, 16 years and over</b>									
Civilian noninstitutional population.....	115,317	116,347	116,453	115,317	116,067	116,156	116,250	116,347	116,453
Civilian labor force.....	82,685	82,871	82,612	82,266	81,684	81,989	81,966	81,751	81,975
Participation rate.....	71.7	71.2	70.9	71.3	70.4	70.6	70.5	70.3	70.4
Employed.....	74,592	75,208	75,190	73,600	73,973	74,177	74,014	73,908	74,122
Employment-population ratio.....	64.7	64.6	64.6	63.8	63.7	63.9	63.7	63.5	63.6
Unemployed.....	8,093	7,664	7,422	8,666	7,712	7,811	7,952	7,844	7,853
Unemployment rate.....	9.8	9.2	9.0	10.5	9.4	9.5	9.7	9.6	9.6
Not in labor force.....	32,632	33,476	33,842	33,051	34,382	34,168	34,284	34,596	34,478
<b>Men, 20 years and over</b>									
Civilian noninstitutional population.....	106,761	107,773	107,884	106,761	107,469	107,566	107,668	107,773	107,884
Civilian labor force.....	79,426	79,322	79,362	79,295	78,856	79,193	79,104	78,906	79,043
Participation rate.....	74.4	73.6	73.6	74.3	73.4	73.6	73.5	73.2	73.3
Employed.....	72,215	72,588	72,795	71,505	71,939	72,137	71,937	71,836	72,015
Employment-population ratio.....	67.6	67.4	67.5	67.0	66.9	67.1	66.8	66.7	66.8
Unemployed.....	7,211	6,734	6,567	7,789	6,917	7,056	7,167	7,070	7,028
Unemployment rate.....	9.1	8.5	8.3	9.8	8.8	8.9	9.1	9.0	8.9
Not in labor force.....	27,335	28,451	28,522	27,467	28,612	28,373	28,564	28,867	28,841
<b>Women, 16 years and over</b>									
Civilian noninstitutional population.....	122,783	123,324	123,418	122,783	123,079	123,157	123,239	123,324	123,418
Civilian labor force.....	71,993	71,941	71,732	71,851	71,737	71,704	71,455	71,476	71,619
Participation rate.....	58.6	58.3	58.1	58.5	58.3	58.2	58.0	58.0	58.0
Employed.....	65,327	65,176	65,145	65,667	65,702	65,602	65,320	65,388	65,505
Employment-population ratio.....	53.2	52.8	52.8	53.5	53.4	53.3	53.0	53.0	53.1
Unemployed.....	6,666	6,764	6,587	6,183	6,035	6,102	6,134	6,088	6,114
Unemployment rate.....	9.3	9.4	9.2	8.6	8.4	8.5	8.6	8.5	8.5
Not in labor force.....	50,789	51,383	51,686	50,932	51,342	51,453	51,784	51,847	51,800
<b>Women, 20 years and over</b>									
Civilian noninstitutional population.....	114,481	115,138	115,238	114,481	114,868	114,954	115,045	115,138	115,238
Civilian labor force.....	68,766	68,512	68,617	68,883	68,896	68,908	68,618	68,666	68,771
Participation rate.....	60.1	59.5	59.5	60.2	60.0	59.9	59.6	59.6	59.7
Employed.....	62,845	62,603	62,746	63,379	63,479	63,402	63,098	63,216	63,300
Employment-population ratio.....	54.9	54.4	54.4	55.4	55.3	55.2	54.8	54.9	54.9
Unemployed.....	5,921	5,909	5,870	5,504	5,417	5,505	5,520	5,450	5,472
Unemployment rate.....	8.6	8.6	8.6	8.0	7.9	8.0	8.0	7.9	8.0
Not in labor force.....	45,715	46,626	46,622	45,598	45,972	46,047	46,427	46,472	46,467
<b>Both sexes, 16 to 19 years</b>									
Civilian noninstitutional population.....	16,857	16,760	16,749	16,857	16,809	16,792	16,776	16,760	16,749
Civilian labor force.....	6,486	6,978	6,365	5,939	5,669	5,592	5,698	5,656	5,779
Participation rate.....	38.5	41.6	38.0	35.2	33.7	33.3	34.0	33.7	34.5
Employed.....	4,859	5,193	4,794	4,383	4,255	4,240	4,299	4,244	4,312
Employment-population ratio.....	28.8	31.0	28.6	26.0	25.3	25.2	25.6	25.3	25.7
Unemployed.....	1,627	1,785	1,571	1,556	1,413	1,352	1,399	1,412	1,467
Unemployment rate.....	25.1	25.6	24.7	26.2	24.9	24.2	24.5	25.0	25.4
Not in labor force.....	10,371	9,782	10,384	10,918	11,140	11,201	11,078	11,104	10,970

<sup>1</sup> The population figures are not adjusted for seasonal variation; therefore, identical numbers appear in the unadjusted and seasonally adjusted columns.

NOTE: Updated population controls are introduced annually with the release of January data.

**HOUSEHOLD DATA**

**Table A-2. Employment status of the civilian population by race, sex, and age**

[Numbers in thousands]

Employment status, race, sex, and age	Not seasonally adjusted			Seasonally adjusted <sup>1</sup>					
	Aug. 2010	July 2011	Aug. 2011	Aug. 2010	Apr. 2011	May 2011	June 2011	July 2011	Aug. 2011
<b>WHITE</b>									
Civilian noninstitutional population.....	192,245	193,106	193,236	192,245	192,771	192,877	192,989	193,106	193,236
Civilian labor force.....	125,710	125,659	125,146	125,358	124,650	124,811	124,493	124,503	124,563
Participation rate.....	65.4	65.1	64.8	65.2	64.7	64.7	64.5	64.5	64.5
Employed.....	114,941	115,350	115,268	114,457	114,652	114,785	114,358	114,420	114,631
Employment-population ratio.....	59.8	59.7	59.7	59.5	59.5	59.5	59.3	59.3	59.3
Unemployed.....	10,769	10,309	9,878	10,901	9,998	10,026	10,135	10,083	9,932
Unemployment rate.....	8.6	8.2	7.9	8.7	8.0	8.0	8.1	8.1	8.0
Not in labor force.....	66,535	67,448	68,090	66,887	68,122	68,066	68,496	68,603	68,673
<b>Men, 20 years and over</b>									
Civilian labor force.....	65,602	65,396	65,335	65,571	65,032	65,335	65,203	65,099	65,105
Participation rate.....	74.9	74.1	74.0	74.8	73.9	74.2	74.0	73.8	73.7
Employed.....	60,221	60,555	60,714	59,720	59,903	60,168	59,943	59,929	60,108
Employment-population ratio.....	68.7	68.6	68.8	68.2	68.1	68.3	68.0	67.9	68.1
Unemployed.....	5,381	4,841	4,622	5,850	5,129	5,167	5,261	5,170	4,997
Unemployment rate.....	8.2	7.4	7.1	8.9	7.9	7.9	8.1	7.9	7.7
<b>Women, 20 years and over</b>									
Civilian labor force.....	54,751	54,464	54,525	54,878	54,971	54,912	54,633	54,696	54,655
Participation rate.....	59.7	59.1	59.2	59.8	59.8	59.7	59.4	59.4	59.3
Employed.....	50,548	50,345	50,405	50,989	51,138	50,999	50,775	50,866	50,826
Employment-population ratio.....	55.1	54.7	54.7	55.6	55.6	55.5	55.2	55.2	55.2
Unemployed.....	4,203	4,119	4,119	3,889	3,833	3,914	3,858	3,830	3,828
Unemployment rate.....	7.7	7.6	7.6	7.1	7.0	7.1	7.1	7.0	7.0
<b>Both sexes, 16 to 19 years</b>									
Civilian labor force.....	5,357	5,798	5,286	4,910	4,646	4,563	4,657	4,708	4,803
Participation rate.....	41.7	45.3	41.3	38.2	36.2	35.6	36.3	36.8	37.5
Employed.....	4,173	4,450	4,149	3,747	3,610	3,619	3,640	3,625	3,697
Employment-population ratio.....	32.5	34.7	32.4	29.2	28.1	28.2	28.4	28.3	28.9
Unemployed.....	1,184	1,348	1,137	1,162	1,036	945	1,017	1,083	1,106
Unemployment rate.....	22.1	23.3	21.5	23.7	22.3	20.7	21.8	23.0	23.0
<b>BLACK OR AFRICAN AMERICAN</b>									
Civilian noninstitutional population.....	28,755	29,123	29,158	28,755	29,035	29,063	29,093	29,123	29,158
Civilian labor force.....	17,991	17,895	18,083	17,876	17,849	17,750	17,733	17,582	17,930
Participation rate.....	62.6	61.4	62.0	62.2	61.5	61.1	61.0	60.4	61.5
Employed.....	15,052	14,890	15,011	14,972	14,966	14,870	14,855	14,786	14,941
Employment-population ratio.....	52.3	51.1	51.5	52.1	51.5	51.2	51.1	50.8	51.2
Unemployed.....	2,939	3,004	3,072	2,904	2,882	2,880	2,877	2,796	2,989
Unemployment rate.....	16.3	16.8	17.0	16.2	16.1	16.2	16.2	15.9	16.7
Not in labor force.....	10,764	11,229	11,075	10,879	11,186	11,313	11,360	11,541	11,229
<b>Men, 20 years and over</b>									
Civilian labor force.....	8,131	8,105	8,207	8,080	8,113	8,056	8,111	8,044	8,151
Participation rate.....	69.8	68.2	68.9	69.3	68.6	68.0	68.3	67.7	68.4
Employed.....	6,813	6,748	6,790	6,691	6,731	6,645	6,736	6,680	6,682
Employment-population ratio.....	58.5	56.8	57.0	57.4	56.9	56.1	56.7	56.2	56.1
Unemployed.....	1,318	1,357	1,417	1,389	1,382	1,411	1,375	1,364	1,469
Unemployment rate.....	16.2	16.7	17.3	17.2	17.0	17.5	17.0	17.0	18.0
<b>Women, 20 years and over</b>									
Civilian labor force.....	9,123	9,050	9,189	9,114	9,054	9,056	8,953	8,945	9,153
Participation rate.....	63.1	61.8	62.7	63.1	62.0	62.0	61.2	61.1	62.4
Employed.....	7,835	7,709	7,858	7,911	7,836	7,847	7,718	7,745	7,923
Employment-population ratio.....	54.2	52.6	53.6	54.7	53.7	53.7	52.8	52.9	54.0
Unemployed.....	1,288	1,341	1,331	1,203	1,217	1,210	1,235	1,200	1,230
Unemployment rate.....	14.1	14.8	14.5	13.2	13.4	13.4	13.8	13.4	13.4
<b>Both sexes, 16 to 19 years</b>									
Civilian labor force.....	737	740	687	682	682	638	669	594	626
Participation rate.....	27.8	28.5	26.6	25.7	26.2	24.5	25.8	22.9	24.2
Employed.....	404	433	363	370	398	378	402	361	335
Employment-population ratio.....	15.3	16.7	14.0	14.0	15.3	14.5	15.5	13.9	13.0
Unemployed.....	332	306	324	312	284	260	267	233	291
Unemployment rate.....	45.1	41.4	47.2	45.7	41.6	40.7	39.9	39.2	46.5
<b>ASIAN</b>									
Civilian noninstitutional population.....	11,265	11,410	11,454	-	-	-	-	-	-

See footnotes at end of table.

**HOUSEHOLD DATA**

**Table A-2. Employment status of the civilian population by race, sex, and age — Continued**

[Numbers in thousands]

Employment status, race, sex, and age	Not seasonally adjusted			Seasonally adjusted <sup>1</sup>					
	Aug. 2010	July 2011	Aug. 2011	Aug. 2010	Apr. 2011	May 2011	June 2011	July 2011	Aug. 2011
Civilian labor force.....	7,311	7,405	7,305	-	-	-	-	-	-
Participation rate.....	64.9	64.9	63.8	-	-	-	-	-	-
Employed.....	6,783	6,838	6,788	-	-	-	-	-	-
Employment-population ratio.....	60.2	59.9	59.3	-	-	-	-	-	-
Unemployed.....	528	568	517	-	-	-	-	-	-
Unemployment rate.....	7.2	7.7	7.1	-	-	-	-	-	-
Not in labor force.....	3,955	4,004	4,149	-	-	-	-	-	-

<sup>1</sup> The population figures are not adjusted for seasonal variation; therefore, identical numbers appear in the unadjusted and seasonally adjusted columns.

- Data not available.

NOTE: Estimates for the above race groups will not sum to totals shown in table A-1 because data are not presented for all races. Updated population controls are introduced annually with the release of January data.

**HOUSEHOLD DATA**

**Table A-3. Employment status of the Hispanic or Latino population by sex and age**

[Numbers in thousands]

Employment status, sex, and age	Not seasonally adjusted			Seasonally adjusted <sup>1</sup>					
	Aug. 2010	July 2011	Aug. 2011	Aug. 2010	Apr. 2011	May 2011	June 2011	July 2011	Aug. 2011
<b>HISPANIC OR LATINO ETHNICITY</b>									
Civilian noninstitutional population.....	33,836	34,470	34,555	33,836	34,233	34,311	34,391	34,470	34,555
Civilian labor force.....	22,832	22,920	23,045	22,733	22,798	22,739	22,816	22,741	22,917
Participation rate.....	67.5	66.5	66.7	67.2	66.6	66.3	66.3	66.0	66.3
Employed.....	20,116	20,325	20,484	19,991	20,110	20,025	20,164	20,171	20,332
Employment-population ratio.....	59.5	59.0	59.3	59.1	58.7	58.4	58.6	58.5	58.8
Unemployed.....	2,716	2,596	2,562	2,742	2,688	2,715	2,653	2,570	2,585
Unemployment rate.....	11.9	11.3	11.1	12.1	11.8	11.9	11.6	11.3	11.3
Not in labor force.....	11,004	11,549	11,510	11,102	11,435	11,571	11,574	11,728	11,638
<b>Men, 20 years and over</b>									
Civilian labor force.....	13,049	13,088	13,118	-	-	-	-	-	-
Participation rate.....	82.8	82.0	82.0	-	-	-	-	-	-
Employed.....	11,694	11,882	11,949	-	-	-	-	-	-
Employment-population ratio.....	74.2	74.5	74.7	-	-	-	-	-	-
Unemployed.....	1,355	1,206	1,169	-	-	-	-	-	-
Unemployment rate.....	10.4	9.2	8.9	-	-	-	-	-	-
<b>Women, 20 years and over</b>									
Civilian labor force.....	8,718	8,722	8,919	-	-	-	-	-	-
Participation rate.....	58.8	57.8	58.9	-	-	-	-	-	-
Employed.....	7,708	7,735	7,903	-	-	-	-	-	-
Employment-population ratio.....	52.0	51.2	52.2	-	-	-	-	-	-
Unemployed.....	1,010	987	1,015	-	-	-	-	-	-
Unemployment rate.....	11.6	11.3	11.4	-	-	-	-	-	-
<b>Both sexes, 16 to 19 years</b>									
Civilian labor force.....	1,065	1,110	1,009	-	-	-	-	-	-
Participation rate.....	32.8	32.6	29.6	-	-	-	-	-	-
Employed.....	714	708	631	-	-	-	-	-	-
Employment-population ratio.....	22.0	20.8	18.5	-	-	-	-	-	-
Unemployed.....	351	402	378	-	-	-	-	-	-
Unemployment rate.....	33.0	36.2	37.4	-	-	-	-	-	-

<sup>1</sup> The population figures are not adjusted for seasonal variation; therefore, identical numbers appear in the unadjusted and seasonally adjusted columns.

- Data not available.

NOTE: Persons whose ethnicity is identified as Hispanic or Latino may be of any race. Updated population controls are introduced annually with the release of January data.

**HOUSEHOLD DATA**

**Table A-4. Employment status of the civilian population 25 years and over by educational attainment**

[Numbers in thousands]

Educational attainment	Not seasonally adjusted			Seasonally adjusted					
	Aug. 2010	July 2011	Aug. 2011	Aug. 2010	Apr. 2011	May 2011	June 2011	July 2011	Aug. 2011
<b>Less than a high school diploma</b>									
Civilian labor force.....	11,750	11,629	11,662	11,815	11,567	11,442	11,392	11,704	11,664
Participation rate.....	46.1	46.6	46.7	46.4	45.5	45.1	45.0	46.9	46.7
Employed.....	10,189	9,988	10,115	10,143	9,876	9,757	9,768	9,952	10,002
Employment-population ratio.....	40.0	40.0	40.5	39.8	38.9	38.5	38.6	39.9	40.0
Unemployed.....	1,562	1,641	1,547	1,673	1,691	1,685	1,624	1,752	1,663
Unemployment rate.....	13.3	14.1	13.3	14.2	14.6	14.7	14.3	15.0	14.3
<b>High school graduates, no college<sup>1</sup></b>									
Civilian labor force.....	38,156	37,113	36,862	38,266	37,506	37,653	37,612	37,505	36,956
Participation rate.....	61.7	59.9	59.9	61.9	60.4	60.4	60.6	60.6	60.0
Employed.....	34,458	33,750	33,536	34,352	33,881	34,072	33,836	34,006	33,425
Employment-population ratio.....	55.7	54.5	54.5	55.5	54.6	54.6	54.5	54.9	54.3
Unemployed.....	3,698	3,364	3,327	3,915	3,626	3,581	3,775	3,499	3,531
Unemployment rate.....	9.7	9.1	9.0	10.2	9.7	9.5	10.0	9.3	9.6
<b>Some college or associate degree</b>									
Civilian labor force.....	37,074	36,706	37,132	37,065	36,637	36,780	36,786	36,686	37,013
Participation rate.....	70.5	68.9	69.4	70.5	69.7	69.7	69.8	68.9	69.2
Employed.....	33,751	33,579	33,969	33,850	33,907	33,852	33,708	33,657	33,975
Employment-population ratio.....	64.2	63.0	63.5	64.4	64.5	64.1	63.9	63.2	63.5
Unemployed.....	3,323	3,128	3,163	3,215	2,730	2,928	3,079	3,028	3,038
Unemployment rate.....	9.0	8.5	8.5	8.7	7.5	8.0	8.4	8.3	8.2
<b>Bachelor's degree and higher<sup>2</sup></b>									
Civilian labor force.....	45,733	46,621	46,800	45,677	46,897	46,925	46,963	46,680	46,813
Participation rate.....	75.9	76.0	76.0	75.8	77.0	77.5	76.8	76.1	76.0
Employed.....	43,460	44,435	44,648	43,574	44,789	44,807	44,894	44,677	44,808
Employment-population ratio.....	72.1	72.5	72.5	72.3	73.5	74.0	73.4	72.9	72.7
Unemployed.....	2,273	2,186	2,152	2,103	2,109	2,118	2,069	2,003	2,005
Unemployment rate.....	5.0	4.7	4.6	4.6	4.5	4.5	4.4	4.3	4.3

1 Includes persons with a high school diploma or equivalent.

2 Includes persons with bachelor's, master's, professional, and doctoral degrees.

NOTE: Updated population controls are introduced annually with the release of January data.

**HOUSEHOLD DATA**

**Table A-5. Employment status of the civilian population 18 years and over by veteran status, period of service, and sex, not seasonally adjusted**

[Numbers in thousands]

Employment status, veteran status, and period of service	Total		Men		Women	
	Aug. 2010	Aug. 2011	Aug. 2010	Aug. 2011	Aug. 2010	Aug. 2011
<b>VETERANS, 18 years and over</b>						
Civilian noninstitutional population.....	21,965	21,562	20,176	19,759	1,789	1,803
Civilian labor force.....	11,910	11,374	10,783	10,291	1,127	1,083
Participation rate.....	54.2	52.7	53.4	52.1	63.0	60.1
Employed.....	10,871	10,497	9,828	9,524	1,043	974
Employment-population ratio.....	49.5	48.7	48.7	48.2	58.3	54.0
Unemployed.....	1,039	877	955	767	84	109
Unemployment rate.....	8.7	7.7	8.9	7.5	7.4	10.1
Not in labor force.....	10,055	10,188	9,393	9,468	662	720
<b>Gulf War-era II veterans</b>						
Civilian noninstitutional population.....	2,181	2,394	1,780	1,981	401	412
Civilian labor force.....	1,854	1,951	1,576	1,655	278	296
Participation rate.....	85.0	81.5	88.5	83.5	69.4	71.9
Employed.....	1,679	1,759	1,428	1,512	252	247
Employment-population ratio.....	77.0	73.5	80.2	76.3	62.8	59.9
Unemployed.....	175	192	149	143	26	49
Unemployment rate.....	9.4	9.8	9.4	8.6	9.4	16.6
Not in labor force.....	327	443	204	327	123	116
<b>Gulf War-era I veterans</b>						
Civilian noninstitutional population.....	2,954	3,006	2,515	2,561	439	445
Civilian labor force.....	2,518	2,494	2,194	2,175	323	319
Participation rate.....	85.2	83.0	87.2	84.9	73.7	71.7
Employed.....	2,333	2,312	2,031	2,012	302	300
Employment-population ratio.....	79.0	76.9	80.7	78.6	68.9	67.5
Unemployed.....	185	182	164	163	21	19
Unemployment rate.....	7.3	7.3	7.5	7.5	6.5	5.9
Not in labor force.....	437	512	321	386	116	126
<b>World War II, Korean War, and Vietnam-era veterans</b>						
Civilian noninstitutional population.....	10,923	10,383	10,558	10,048	364	336
Civilian labor force.....	3,986	3,577	3,889	3,499	97	78
Participation rate.....	36.5	34.5	36.8	34.8	26.5	23.3
Employed.....	3,593	3,332	3,502	3,261	91	71
Employment-population ratio.....	32.9	32.1	33.2	32.5	24.9	21.1
Unemployed.....	393	245	387	238	6	7
Unemployment rate.....	9.9	6.9	10.0	6.8	6.1	9.3
Not in labor force.....	6,937	6,806	6,669	6,549	268	257
<b>Veterans of other service periods</b>						
Civilian noninstitutional population.....	5,907	5,780	5,322	5,169	585	610
Civilian labor force.....	3,552	3,352	3,123	2,963	429	389
Participation rate.....	60.1	58.0	58.7	57.3	73.3	63.8
Employed.....	3,266	3,094	2,868	2,739	398	356
Employment-population ratio.....	55.3	53.5	53.9	53.0	68.1	58.3
Unemployed.....	286	258	255	224	31	34
Unemployment rate.....	8.0	7.7	8.2	7.6	7.1	8.7
Not in labor force.....	2,355	2,428	2,199	2,207	156	221
<b>NONVETERANS, 18 years and over</b>						
Civilian noninstitutional population.....	207,255	209,844	90,634	92,331	116,621	117,513
Civilian labor force.....	140,472	140,818	70,744	71,295	69,728	69,523
Participation rate.....	67.8	67.1	78.1	77.2	59.8	59.2
Employed.....	127,411	128,265	63,956	64,906	63,455	63,359
Employment-population ratio.....	61.5	61.1	70.6	70.3	54.4	53.9
Unemployed.....	13,061	12,553	6,788	6,389	6,273	6,164
Unemployment rate.....	9.3	8.9	9.6	9.0	9.0	8.9
Not in labor force.....	66,783	69,026	19,890	21,036	46,892	47,989

NOTE: Veterans served on active duty in the U.S. Armed Forces and were not on active duty at the time of the survey. Nonveterans never served on active duty in the U.S. Armed Forces. Veterans could have served anywhere in the world during these periods of service: Gulf War era II (September 2001-present), Gulf War era I (August 1990-August 2001), Vietnam era (August 1964-April 1975), Korean War (July 1950-January 1955), World War II (December 1941-December 1946), and other service periods (all other time periods). Veterans who served in more than one wartime period are classified only in the most recent one. Veterans who served during one of the selected wartime periods and another period are classified only in the wartime period. Updated population controls are introduced annually with the release of January data.



**HOUSEHOLD DATA**

**Table A-6. Employment status of the civilian population by sex, age, and disability status, not seasonally adjusted**

[Numbers in thousands]

Employment status, sex, and age	Persons with a disability		Persons with no disability	
	Aug. 2010	Aug. 2011	Aug. 2010	Aug. 2011
<b>TOTAL, 16 years and over</b>				
Civilian noninstitutional population.....	26,045	27,431	212,054	212,441
Civilian labor force.....	5,738	5,774	148,940	148,570
Participation rate.....	22.0	21.0	70.2	69.9
Employed.....	4,841	4,842	135,078	135,493
Employment-population ratio.....	18.6	17.7	63.7	63.8
Unemployed.....	897	932	13,863	13,076
Unemployment rate.....	15.6	16.1	9.3	8.8
Not in labor force.....	20,307	21,657	63,114	63,871
<b>Men, 16 to 64 years</b>				
Civilian labor force.....	2,682	2,697	76,245	75,940
Participation rate.....	37.6	35.5	83.4	83.1
Employed.....	2,243	2,253	68,885	69,215
Employment-population ratio.....	31.4	29.7	75.4	75.8
Unemployed.....	439	443	7,360	6,725
Unemployment rate.....	16.4	16.4	9.7	8.9
Not in labor force.....	4,456	4,894	15,134	15,406
<b>Women, 16 to 64 years</b>				
Civilian labor force.....	2,225	2,216	66,775	66,511
Participation rate.....	30.7	29.3	71.4	71.1
Employed.....	1,844	1,821	60,687	60,546
Employment-population ratio.....	25.4	24.1	64.9	64.7
Unemployed.....	381	395	6,088	5,965
Unemployment rate.....	17.1	17.8	9.1	9.0
Not in labor force.....	5,029	5,351	26,762	27,079
<b>Both sexes, 65 years and over</b>				
Civilian labor force.....	831	862	5,920	6,118
Participation rate.....	7.1	7.0	21.8	22.2
Employed.....	754	768	5,506	5,731
Employment-population ratio.....	6.5	6.3	20.3	20.8
Unemployed.....	77	94	415	386
Unemployment rate.....	9.3	10.9	7.0	6.3
Not in labor force.....	10,823	11,412	21,217	21,387

NOTE: A person with a disability has at least one of the following conditions: is deaf or has serious difficulty hearing; is blind or has serious difficulty seeing even when wearing glasses; has serious difficulty concentrating, remembering, or making decisions because of a physical, mental, or emotional condition; has serious difficulty walking or climbing stairs; has difficulty dressing or bathing; or has difficulty doing errands alone such as visiting a doctor's office or shopping because of a physical, mental, or emotional condition. Updated population controls are introduced annually with the release of January data.

**HOUSEHOLD DATA**

**Table A-7. Employment status of the civilian population by nativity and sex, not seasonally adjusted**

[Numbers in thousands]

Employment status and nativity	Total		Men		Women	
	Aug. 2010	Aug. 2011	Aug. 2010	Aug. 2011	Aug. 2010	Aug. 2011
<b>Foreign born, 16 years and over</b>						
Civilian noninstitutional population.....	36,347	36,531	18,237	18,198	18,110	18,334
Civilian labor force.....	24,644	24,377	14,616	14,410	10,028	9,967
Participation rate.....	67.8	66.7	80.1	79.2	55.4	54.4
Employed.....	22,415	22,292	13,360	13,285	9,055	9,007
Employment-population ratio.....	61.7	61.0	73.3	73.0	50.0	49.1
Unemployed.....	2,229	2,085	1,256	1,125	974	960
Unemployment rate.....	9.0	8.6	8.6	7.8	9.7	9.6
Not in labor force.....	11,703	12,154	3,621	3,787	8,082	8,367
<b>Native born, 16 years and over</b>						
Civilian noninstitutional population.....	201,752	203,340	97,080	98,256	104,672	105,084
Civilian labor force.....	130,034	129,966	68,069	68,201	61,965	61,765
Participation rate.....	64.5	63.9	70.1	69.4	59.2	58.8
Employed.....	117,504	118,043	61,232	61,905	56,272	56,138
Employment-population ratio.....	58.2	58.1	63.1	63.0	53.8	53.4
Unemployed.....	12,530	11,923	6,837	6,297	5,693	5,627
Unemployment rate.....	9.6	9.2	10.0	9.2	9.2	9.1
Not in labor force.....	71,718	73,374	29,011	30,055	42,708	43,319

NOTE: The foreign born are those residing in the United States who were not U.S. citizens at birth. That is, they were born outside the United States or one of its outlying areas such as Puerto Rico or Guam, to parents neither of whom was a U.S. citizen. The native born are persons who were born in the United States or one of its outlying areas such as Puerto Rico or Guam or who were born abroad of at least one parent who was a U.S. citizen. Updated population controls are introduced annually with the release of January data.

**HOUSEHOLD DATA**

**Table A-8. Employed persons by class of worker and part-time status**

[In thousands]

Category	Not seasonally adjusted			Seasonally adjusted					
	Aug. 2010	July 2011	Aug. 2011	Aug. 2010	Apr. 2011	May 2011	June 2011	July 2011	Aug. 2011
<b>CLASS OF WORKER</b>									
Agriculture and related industries.....	2,327	2,484	2,531	2,187	2,087	2,243	2,217	2,245	2,355
Wage and salary workers <sup>1</sup> .....	1,409	1,596	1,606	1,306	1,245	1,391	1,383	1,419	1,475
Self-employed workers, unincorporated.....	886	867	879	852	818	822	829	810	843
Unpaid family workers.....	31	21	46	-	-	-	-	-	-
Nonagricultural industries.....	137,592	137,900	137,804	136,957	137,595	137,551	137,035	136,837	137,146
Wage and salary workers <sup>1</sup> .....	128,656	129,200	129,042	128,215	128,840	128,803	128,437	128,393	128,552
Government.....	20,062	19,661	19,709	20,564	20,726	20,309	20,318	20,302	20,286
Private industries.....	108,595	109,538	109,333	107,709	108,186	108,505	108,209	108,070	108,275
Private households.....	678	822	769	-	-	-	-	-	-
Other industries.....	107,916	108,716	108,564	107,057	107,510	107,727	107,511	107,319	107,556
Self-employed workers, unincorporated.....	8,884	8,618	8,695	8,715	8,650	8,655	8,543	8,525	8,551
Unpaid family workers.....	52	82	66	-	-	-	-	-	-
<b>PERSONS AT WORK PART TIME<sup>2</sup></b>									
<b>All industries</b>									
Part time for economic reasons <sup>3</sup> .....	8,628	8,514	8,604	8,883	8,600	8,548	8,552	8,396	8,826
Slack work or business conditions.....	6,031	5,542	5,593	6,357	5,689	5,834	5,806	5,687	5,833
Could only find part-time work.....	2,183	2,555	2,579	2,379	2,480	2,473	2,401	2,517	2,736
Part time for noneconomic reasons <sup>4</sup> .....	16,888	16,680	16,535	18,566	18,282	18,468	18,470	18,258	18,208
<b>Nonagricultural industries</b>									
Part time for economic reasons <sup>3</sup> .....	8,509	8,372	8,463	8,752	8,475	8,400	8,400	8,218	8,670
Slack work or business conditions.....	5,953	5,438	5,492	6,276	5,581	5,731	5,704	5,569	5,732
Could only find part-time work.....	2,159	2,536	2,554	2,347	2,457	2,444	2,341	2,466	2,720
Part time for noneconomic reasons <sup>4</sup> .....	16,546	16,283	16,153	18,175	17,967	18,126	18,151	17,880	17,813

1 Includes self-employed workers whose businesses are incorporated.

2 Refers to those who worked 1 to 34 hours during the survey reference week and excludes employed persons who were absent from their jobs for the entire week.

3 Refers to those who worked 1 to 34 hours during the reference week for an economic reason such as slack work or unfavorable business conditions, inability to find full-time work, or seasonal declines in demand.

4 Refers to persons who usually work part time for noneconomic reasons such as childcare problems, family or personal obligations, school or training, retirement or Social Security limits on earnings, and other reasons. This excludes persons who usually work full time but worked only 1 to 34 hours during the reference week for reasons such as vacations, holidays, illness, and bad weather.

- Data not available.

NOTE: Detail for the seasonally adjusted data shown in this table will not necessarily add to totals because of the independent seasonal adjustment of the various series. Updated population controls are introduced annually with the release of January data.

# HOUSEHOLD DATA

## Table A-9. Selected employment indicators

[Numbers in thousands]

Characteristic	Not seasonally adjusted			Seasonally adjusted					
	Aug. 2010	July 2011	Aug. 2011	Aug. 2010	Apr. 2011	May 2011	June 2011	July 2011	Aug. 2011
<b>AGE AND SEX</b>									
Total, 16 years and over.....	139,919	140,384	140,335	139,267	139,674	139,779	139,334	139,296	139,627
16 to 19 years.....	4,859	5,193	4,794	4,383	4,255	4,240	4,299	4,244	4,312
16 to 17 years.....	1,637	1,714	1,573	1,413	1,247	1,249	1,358	1,343	1,341
18 to 19 years.....	3,223	3,478	3,222	2,979	2,989	2,982	2,945	2,890	2,981
20 years and over.....	135,060	135,191	135,541	134,885	135,419	135,539	135,035	135,052	135,315
20 to 24 years.....	13,202	13,440	13,273	12,838	12,978	12,970	12,911	12,860	12,895
25 years and over.....	121,858	121,751	122,268	122,110	122,423	122,641	122,175	122,228	122,447
25 to 54 years.....	94,027	93,333	93,608	94,060	93,690	93,919	93,505	93,550	93,568
25 to 34 years.....	30,429	30,431	30,789	30,341	30,354	30,627	30,416	30,322	30,635
35 to 44 years.....	30,612	30,157	30,021	30,598	30,441	30,302	30,197	30,249	30,017
45 to 54 years.....	32,986	32,745	32,798	33,120	32,895	32,989	32,892	32,979	32,916
55 years and over.....	27,831	28,418	28,660	28,051	28,733	28,722	28,670	28,677	28,880
Men, 16 years and over.....	74,592	75,208	75,190	73,600	73,973	74,177	74,014	73,908	74,122
16 to 19 years.....	2,377	2,619	2,395	2,095	2,033	2,040	2,077	2,072	2,107
16 to 17 years.....	808	888	760	671	582	594	646	652	629
18 to 19 years.....	1,569	1,731	1,635	1,437	1,441	1,446	1,451	1,429	1,492
20 years and over.....	72,215	72,588	72,795	71,505	71,939	72,137	71,937	71,836	72,015
20 to 24 years.....	6,857	7,127	7,053	6,573	6,712	6,756	6,754	6,711	6,747
25 years and over.....	65,358	65,461	65,742	64,976	65,193	65,448	65,193	65,163	65,289
25 to 54 years.....	50,750	50,329	50,480	50,345	50,107	50,358	50,096	50,018	50,019
25 to 34 years.....	16,689	16,665	16,917	16,495	16,557	16,747	16,607	16,481	16,674
35 to 44 years.....	16,725	16,447	16,342	16,603	16,428	16,421	16,365	16,371	16,226
45 to 54 years.....	17,336	17,217	17,221	17,247	17,123	17,189	17,124	17,167	17,118
55 years and over.....	14,608	15,133	15,261	14,630	15,087	15,090	15,097	15,146	15,271
Women, 16 years and over.....	65,327	65,176	65,145	65,667	65,702	65,602	65,320	65,388	65,505
16 to 19 years.....	2,482	2,573	2,399	2,288	2,222	2,200	2,222	2,172	2,205
16 to 17 years.....	829	826	812	742	665	654	713	691	712
18 to 19 years.....	1,654	1,747	1,587	1,542	1,548	1,537	1,494	1,461	1,489
20 years and over.....	62,845	62,603	62,746	63,379	63,479	63,402	63,098	63,216	63,300
20 to 24 years.....	6,345	6,313	6,220	6,265	6,266	6,214	6,157	6,149	6,148
25 years and over.....	56,500	56,290	56,526	57,135	57,230	57,193	56,982	57,064	57,158
25 to 54 years.....	43,277	43,004	43,127	43,714	43,584	43,561	43,409	43,533	43,549
25 to 34 years.....	13,740	13,767	13,871	13,846	13,798	13,880	13,809	13,841	13,960
35 to 44 years.....	13,887	13,710	13,679	13,995	14,014	13,881	13,833	13,879	13,790
45 to 54 years.....	15,650	15,528	15,577	15,873	15,772	15,800	15,768	15,813	15,798
55 years and over.....	13,223	13,285	13,399	13,420	13,646	13,631	13,573	13,532	13,609
<b>MARITAL STATUS</b>									
Married men, spouse present.....	43,512	43,213	43,362	43,418	42,987	42,998	43,004	43,145	43,184
Married women, spouse present.....	33,721	33,243	33,321	34,271	34,062	33,826	33,676	33,734	33,845
Women who maintain families.....	8,714	9,224	9,278	-	-	-	-	-	-
<b>FULL- OR PART-TIME STATUS</b>									
Full-time workers <sup>1</sup> .....	113,508	113,759	114,286	111,805	112,484	112,342	111,907	111,859	112,330
Part-time workers <sup>2</sup> .....	26,411	26,624	26,050	27,711	27,088	27,418	27,631	27,606	27,407
<b>MULTIPLE JOBHOLDERS</b>									
Total multiple jobholders.....	6,515	6,724	6,649	6,805	6,775	6,939	6,880	6,741	6,927
Percent of total employed.....	4.7	4.8	4.7	4.9	4.9	5.0	4.9	4.8	5.0
<b>SELF-EMPLOYMENT</b>									
Self-employed workers, incorporated.....	4,995	5,170	5,101	-	-	-	-	-	-
Self-employed workers, unincorporated.....	9,770	9,485	9,575	9,567	9,468	9,477	9,372	9,335	9,394

1 Employed full-time workers are persons who usually work 35 hours or more per week.

2 Employed part-time workers are persons who usually work less than 35 hours per week.

- Data not available.

NOTE: Detail for the seasonally adjusted data shown in this table will not necessarily add to totals because of the independent seasonal adjustment of the various series. Updated population controls are introduced annually with the release of January data.

**HOUSEHOLD DATA**
**Table A-10. Selected unemployment indicators, seasonally adjusted**

Characteristic	Number of unemployed persons (in thousands)			Unemployment rates					
	Aug. 2010	July 2011	Aug. 2011	Aug. 2010	Apr. 2011	May 2011	June 2011	July 2011	Aug. 2011
<b>AGE AND SEX</b>									
Total, 16 years and over.....	14,849	13,931	13,967	9.6	9.0	9.1	9.2	9.1	9.1
16 to 19 years.....	1,556	1,412	1,467	26.2	24.9	24.2	24.5	25.0	25.4
16 to 17 years.....	641	540	564	31.2	31.4	29.4	28.2	28.7	29.6
18 to 19 years.....	932	870	966	23.8	22.2	21.9	22.8	23.1	24.5
20 years and over.....	13,293	12,519	12,500	9.0	8.3	8.5	8.6	8.5	8.5
20 to 24 years.....	2,253	2,192	2,231	14.9	14.9	14.7	14.5	14.6	14.8
25 years and over.....	11,071	10,314	10,297	8.3	7.6	7.8	8.0	7.8	7.8
25 to 54 years.....	8,825	8,157	8,226	8.6	8.0	8.1	8.2	8.0	8.1
25 to 34 years.....	3,304	3,257	3,210	9.8	9.5	9.3	9.6	9.7	9.5
35 to 44 years.....	2,576	2,319	2,498	7.8	7.3	7.7	7.8	7.1	7.7
45 to 54 years.....	2,945	2,581	2,519	8.2	7.1	7.3	7.3	7.3	7.1
55 years and over.....	2,205	2,123	2,053	7.3	6.5	6.8	7.0	6.9	6.6
Men, 16 years and over.....	8,666	7,844	7,853	10.5	9.4	9.5	9.7	9.6	9.6
16 to 19 years.....	876	774	825	29.5	28.1	27.0	27.4	27.2	28.1
16 to 17 years.....	328	278	252	32.8	32.7	31.3	30.7	29.9	28.6
18 to 19 years.....	553	491	607	27.8	26.4	25.2	25.7	25.6	28.9
20 years and over.....	7,789	7,070	7,028	9.8	8.8	8.9	9.1	9.0	8.9
20 to 24 years.....	1,374	1,254	1,329	17.3	16.1	15.7	15.5	15.7	16.5
25 years and over.....	6,481	5,821	5,761	9.1	7.9	8.1	8.4	8.2	8.1
25 to 54 years.....	5,123	4,608	4,618	9.2	8.2	8.4	8.6	8.4	8.5
25 to 34 years.....	1,926	1,866	1,816	10.5	9.9	9.7	10.0	10.2	9.8
35 to 44 years.....	1,485	1,318	1,428	8.2	7.2	7.5	8.1	7.5	8.1
45 to 54 years.....	1,711	1,423	1,374	9.0	7.7	8.0	7.7	7.7	7.4
55 years and over.....	1,358	1,213	1,144	8.5	6.9	7.0	7.9	7.4	7.0
Women, 16 years and over.....	6,183	6,088	6,114	8.6	8.4	8.5	8.6	8.5	8.5
16 to 19 years.....	680	638	642	22.9	21.8	21.3	21.6	22.7	22.6
16 to 17 years.....	313	262	312	29.6	30.1	27.5	25.9	27.5	30.5
18 to 19 years.....	379	379	359	19.7	17.9	18.6	19.7	20.6	19.4
20 years and over.....	5,504	5,450	5,472	8.0	7.9	8.0	8.0	7.9	8.0
20 to 24 years.....	880	938	902	12.3	13.7	13.6	13.4	13.2	12.8
25 years and over.....	4,590	4,493	4,536	7.4	7.3	7.4	7.4	7.3	7.4
25 to 54 years.....	3,703	3,549	3,608	7.8	7.7	7.6	7.8	7.5	7.7
25 to 34 years.....	1,378	1,390	1,394	9.1	9.1	8.8	9.1	9.1	9.1
35 to 44 years.....	1,090	1,001	1,070	7.2	7.5	7.8	7.4	6.7	7.2
45 to 54 years.....	1,234	1,158	1,144	7.2	6.5	6.5	6.9	6.8	6.8
55 years and over <sup>1</sup> .....	977	1,042	1,018	6.9	5.4	6.0	6.3	7.3	7.1
<b>MARITAL STATUS</b>									
Married men, spouse present.....	3,172	2,819	2,710	6.8	6.0	5.9	6.2	6.1	5.9
Married women, spouse present.....	2,146	2,019	2,072	5.9	5.7	5.8	5.6	5.6	5.8
Women who maintain families <sup>1</sup> .....	1,346	1,270	1,257	13.4	11.7	12.7	12.8	12.1	11.9
<b>FULL- OR PART-TIME STATUS</b>									
Full-time workers <sup>2</sup> .....	12,869	12,132	12,077	10.3	9.6	9.7	9.8	9.8	9.7
Part-time workers <sup>3</sup> .....	2,005	1,781	1,904	6.7	6.4	6.3	6.7	6.1	6.5

1 Not seasonally adjusted.

2 Full-time workers are unemployed persons who have expressed a desire to work full time (35 hours or more per week) or are on layoff from full-time jobs.

3 Part-time workers are unemployed persons who have expressed a desire to work part time (less than 35 hours per week) or are on layoff from part-time jobs.

NOTE: Detail for the seasonally adjusted data shown in this table will not necessarily add to totals because of the independent seasonal adjustment of the various series. Updated population controls are introduced annually with the release of January data.

**HOUSEHOLD DATA**

**Table A-11. Unemployed persons by reason for unemployment**

[Numbers in thousands]

Reason	Not seasonally adjusted			Seasonally adjusted					
	Aug. 2010	July 2011	Aug. 2011	Aug. 2010	Apr. 2011	May 2011	June 2011	July 2011	Aug. 2011
<b>NUMBER OF UNEMPLOYED</b>									
Job losers and persons who completed temporary jobs.....	8,894	8,107	7,897	9,285	8,144	8,274	8,261	8,215	8,203
On temporary layoff.....	1,359	1,294	1,136	1,505	1,251	1,214	1,251	1,268	1,247
Not on temporary layoff.....	7,535	6,813	6,762	7,780	6,894	7,060	7,010	6,947	6,956
Permanent job losers.....	6,214	5,509	5,399	6,411	5,480	5,653	5,606	5,567	5,545
Persons who completed temporary jobs.....	1,321	1,305	1,362	1,368	1,414	1,407	1,405	1,380	1,411
Job leavers.....	943	973	1,056	868	942	908	965	928	963
Reentrants.....	3,492	3,603	3,644	3,418	3,375	3,433	3,430	3,410	3,532
New entrants.....	1,430	1,745	1,411	1,260	1,346	1,231	1,222	1,270	1,241
<b>PERCENT DISTRIBUTION</b>									
Job losers and persons who completed temporary jobs.....	60.3	56.2	56.4	62.6	59.0	59.8	59.5	59.4	58.8
On temporary layoff.....	9.2	9.0	8.1	10.1	9.1	8.8	9.0	9.2	8.9
Not on temporary layoff.....	51.1	47.2	48.3	52.5	49.9	51.0	50.5	50.3	49.9
Job leavers.....	6.4	6.7	7.5	5.9	6.8	6.6	7.0	6.7	6.9
Reentrants.....	23.7	25.0	26.0	23.0	24.4	24.8	24.7	24.7	25.3
New entrants.....	9.7	12.1	10.1	8.5	9.8	8.9	8.8	9.2	8.9
<b>UNEMPLOYED AS A PERCENT OF THE CIVILIAN LABOR FORCE</b>									
Job losers and persons who completed temporary jobs.....	5.7	5.2	5.1	6.0	5.3	5.4	5.4	5.4	5.3
Job leavers.....	0.6	0.6	0.7	0.6	0.6	0.6	0.6	0.6	0.6
Reentrants.....	2.3	2.3	2.4	2.2	2.2	2.2	2.2	2.2	2.3
New entrants.....	0.9	1.1	0.9	0.8	0.9	0.8	0.8	0.8	0.8

NOTE: Updated population controls are introduced annually with the release of January data.

## HOUSEHOLD DATA

### Table A-12. Unemployed persons by duration of unemployment

[Numbers in thousands]

Duration	Not seasonally adjusted			Seasonally adjusted					
	Aug. 2010	July 2011	Aug. 2011	Aug. 2010	Apr. 2011	May 2011	June 2011	July 2011	Aug. 2011
<b>NUMBER OF UNEMPLOYED</b>									
Less than 5 weeks.....	2,632	2,952	2,635	2,756	2,691	2,664	3,076	2,689	2,755
5 to 14 weeks.....	3,939	3,496	3,377	3,604	2,907	2,892	2,972	3,088	3,050
15 weeks and over.....	8,189	7,980	7,997	8,471	7,845	8,184	8,125	8,150	8,273
15 to 26 weeks.....	1,916	1,762	1,958	2,210	2,006	1,984	1,836	1,965	2,239
27 weeks and over.....	6,273	6,218	6,038	6,261	5,839	6,200	6,289	6,185	6,034
Average (mean) duration, in weeks <sup>1</sup> .....	33.1	39.0	39.7	33.5	38.3	39.7	39.9	40.4	40.3
Median duration, in weeks.....	19.6	19.7	20.6	20.6	20.7	22.0	22.5	21.2	21.8
<b>PERCENT DISTRIBUTION</b>									
Less than 5 weeks.....	17.8	20.5	18.8	18.6	20.0	19.4	21.7	19.3	19.6
5 to 14 weeks.....	26.7	24.2	24.1	24.3	21.6	21.0	21.0	22.2	21.7
15 weeks and over.....	55.5	55.3	57.1	57.1	58.4	59.6	57.3	58.5	58.8
15 to 26 weeks.....	13.0	12.2	14.0	14.9	14.9	14.4	13.0	14.1	15.9
27 weeks and over.....	42.5	43.1	43.1	42.2	43.4	45.1	44.4	44.4	42.9

<sup>1</sup> Beginning in January 2011, this series reflects a change to the collection of data on unemployment duration. For more information, see [www.bls.gov/cps/duration.htm](http://www.bls.gov/cps/duration.htm).

NOTE: Updated population controls are introduced annually with the release of January data.

**HOUSEHOLD DATA**

**Table A-13. Employed and unemployed persons by occupation, not seasonally adjusted**

[Numbers in thousands]

Occupation	Employed		Unemployed		Unemployment rates	
	Aug. 2010	Aug. 2011	Aug. 2010	Aug. 2011	Aug. 2010	Aug. 2011
Total, 16 years and over <sup>1</sup> .....	139,919	140,335	14,759	14,008	9.5	9.1
Management, professional, and related occupations.....	50,879	51,997	2,762	2,671	5.1	4.9
Management, business, and financial operations occupations.....	20,741	21,632	1,067	1,037	4.9	4.6
Professional and related occupations.....	30,138	30,365	1,695	1,634	5.3	5.1
Service occupations.....	25,228	25,396	2,998	2,924	10.6	10.3
Sales and office occupations.....	33,429	33,023	3,345	3,182	9.1	8.8
Sales and related occupations.....	15,367	15,193	1,519	1,424	9.0	8.6
Office and administrative support occupations.....	18,062	17,831	1,826	1,757	9.2	9.0
Natural resources, construction, and maintenance occupations.....	13,743	13,454	2,136	1,718	13.5	11.3
Farming, fishing, and forestry occupations.....	1,092	1,190	117	145	9.6	10.9
Construction and extraction occupations.....	7,665	7,420	1,498	1,126	16.3	13.2
Installation, maintenance, and repair occupations.....	4,985	4,844	522	447	9.5	8.4
Production, transportation, and material moving occupations.....	16,640	16,464	2,046	2,077	10.9	11.2
Production occupations.....	8,243	8,130	1,078	984	11.6	10.8
Transportation and material moving occupations.....	8,397	8,334	968	1,093	10.3	11.6

<sup>1</sup> Persons with no previous work experience and persons whose last job was in the U.S. Armed Forces are included in the unemployed total.

NOTE: Updated population controls are introduced annually with the release of January data. Effective with January 2011 data, occupations reflect the introduction of the 2010 Census occupational classification system into the Current Population Survey, or household survey. This classification system is derived from the 2010 Standard Occupational Classification (SOC). No historical data have been revised. Data for 2011 are not strictly comparable with earlier years.



**HOUSEHOLD DATA**

**Table A-14. Unemployed persons by industry and class of worker, not seasonally adjusted**

Industry and class of worker	Number of unemployed persons (in thousands)		Unemployment rates	
	Aug. 2010	Aug. 2011	Aug. 2010	Aug. 2011
Total, 16 years and over <sup>1</sup> .....	14,759	14,008	9.5	9.1
Nonagricultural private wage and salary workers.....	11,285	10,524	9.4	8.8
Mining, quarrying, and oil and gas extraction.....	93	53	10.9	5.8
Construction.....	1,483	1,154	17.0	13.5
Manufacturing.....	1,463	1,365	9.5	8.9
Durable goods.....	984	876	10.0	9.1
Nondurable goods.....	479	489	8.6	8.6
Wholesale and retail trade.....	1,909	1,851	9.3	9.1
Transportation and utilities.....	440	537	7.3	8.7
Information.....	302	204	9.7	6.9
Financial activities.....	606	565	6.7	6.2
Professional and business services.....	1,524	1,440	10.5	9.5
Education and health services.....	1,430	1,371	6.7	6.3
Leisure and hospitality.....	1,507	1,399	10.8	10.5
Other services.....	530	585	8.3	9.0
Agriculture and related private wage and salary workers.....	114	135	7.9	8.0
Government workers.....	1,292	1,271	6.0	6.0
Self-employed workers, unincorporated, and unpaid family workers.....	638	668	6.1	6.4

<sup>1</sup> Persons with no previous work experience and persons whose last job was in the U.S. Armed Forces are included in the unemployed total.

NOTE: Updated population controls are introduced annually with the release of January data.

**HOUSEHOLD DATA**

**Table A-15. Alternative measures of labor underutilization**

[Percent]

Measure	Not seasonally adjusted			Seasonally adjusted					
	Aug. 2010	July 2011	Aug. 2011	Aug. 2010	Apr. 2011	May 2011	June 2011	July 2011	Aug. 2011
U-1 Persons unemployed 15 weeks or longer, as a percent of the civilian labor force.....	5.3	5.2	5.2	5.5	5.1	5.3	5.3	5.3	5.4
U-2 Job losers and persons who completed temporary jobs, as a percent of the civilian labor force.....	5.7	5.2	5.1	6.0	5.3	5.4	5.4	5.4	5.3
U-3 Total unemployed, as a percent of the civilian labor force (official unemployment rate).....	9.5	9.3	9.1	9.6	9.0	9.1	9.2	9.1	9.1
U-4 Total unemployed plus discouraged workers, as a percent of the civilian labor force plus discouraged workers.....	10.2	10.0	9.6	10.3	9.5	9.5	9.8	9.8	9.7
U-5 Total unemployed, plus discouraged workers, plus all other persons marginally attached to the labor force, as a percent of the civilian labor force plus all persons marginally attached to the labor force.....	10.9	10.9	10.6	11.0	10.4	10.3	10.7	10.7	10.6
U-6 Total unemployed, plus all persons marginally attached to the labor force, plus total employed part time for economic reasons, as a percent of the civilian labor force plus all persons marginally attached to the labor force.....	16.4	16.3	16.1	16.7	15.9	15.8	16.2	16.1	16.2

NOTE: Persons marginally attached to the labor force are those who currently are neither working nor looking for work but indicate that they want and are available for a job and have looked for work sometime in the past 12 months. Discouraged workers, a subset of the marginally attached, have given a job-market related reason for not currently looking for work. Persons employed part time for economic reasons are those who want and are available for full-time work but have had to settle for a part-time schedule. Updated population controls are introduced annually with the release of January data.

**HOUSEHOLD DATA**

**Table A-16. Persons not in the labor force and multiple jobholders by sex, not seasonally adjusted**

[Numbers in thousands]

Category	Total		Men		Women	
	Aug. 2010	Aug. 2011	Aug. 2010	Aug. 2011	Aug. 2010	Aug. 2011
<b>NOT IN THE LABOR FORCE</b>						
Total not in the labor force.....	83,421	85,528	32,632	33,842	50,789	51,686
Persons who currently want a job.....	6,083	6,493	2,785	2,946	3,298	3,547
Marginally attached to the labor force <sup>1</sup> .....	2,370	2,575	1,292	1,333	1,078	1,242
Discouraged workers <sup>2</sup> .....	1,110	977	704	570	405	407
Other persons marginally attached to the labor force <sup>3</sup> .....	1,260	1,598	587	763	673	835
<b>MULTIPLE JOBHOLDERS</b>						
Total multiple jobholders <sup>4</sup> .....	6,515	6,649	3,226	3,344	3,289	3,305
Percent of total employed.....	4.7	4.7	4.3	4.4	5.0	5.1
Primary job full time, secondary job part time.....	3,431	3,599	1,855	1,956	1,576	1,643
Primary and secondary jobs both part time.....	1,617	1,692	586	661	1,031	1,032
Primary and secondary jobs both full time.....	267	241	173	149	94	92
Hours vary on primary or secondary job.....	1,167	1,061	603	557	563	504

1 Data refer to persons who want a job, have searched for work during the prior 12 months, and were available to take a job during the reference week, but had not looked for work in the past 4 weeks.

2 Includes those who did not actively look for work in the prior 4 weeks for reasons such as thinks no work available, could not find work, lacks schooling or training, employer thinks too young or old, and other types of discrimination.

3 Includes those who did not actively look for work in the prior 4 weeks for such reasons as school or family responsibilities, ill health, and transportation problems, as well as a number for whom reason for nonparticipation was not determined.

4 Includes a small number of persons who work part time on their primary job and full time on their secondary job(s), not shown separately.

NOTE: Updated population controls are introduced annually with the release of January data.

**ESTABLISHMENT DATA**

**Table B-1. Employees on nonfarm payrolls by industry sector and selected industry detail**

[In thousands]

Industry	Not seasonally adjusted				Seasonally adjusted				Change from: July 2011 - Aug. 2011 <sup>P</sup>
	Aug. 2010	June 2011	July 2011 <sup>P</sup>	Aug. 2011 <sup>P</sup>	Aug. 2010	June 2011	July 2011 <sup>P</sup>	Aug. 2011 <sup>P</sup>	
Total nonfarm.....	129,624	132,144	130,788	130,906	129,873	131,047	131,132	131,132	0
Total private.....	108,396	110,064	110,055	110,140	107,461	108,997	109,153	109,170	17
Goods-producing.....	18,204	18,325	18,424	18,520	17,790	18,035	18,087	18,084	-3
Mining and logging.....	729	798	812	817	719	789	798	803	5
Logging.....	52.8	46.7	49.4	49.5	50.7	46.9	47.7	47.2	-0.5
Mining.....	676.2	750.8	762.8	767.7	668.3	742.2	749.9	755.4	5.5
Oil and gas extraction.....	160.9	175.9	177.9	178.9	159.8	173.6	175.4	177.1	1.7
Mining, except oil and gas <sup>1</sup> .....	210.8	220.3	220.0	223.0	204.3	214.0	213.3	215.2	1.9
Coal mining.....	81.2	87.3	85.9	87.3	81.1	86.8	85.7	87.0	1.3
Support activities for mining.....	304.5	354.6	364.9	365.8	304.2	354.6	361.2	363.1	1.9
Construction.....	5,829	5,731	5,805	5,846	5,520	5,522	5,529	5,524	-5
Construction of buildings.....	1,277.6	1,255.3	1,264.9	1,274.5	1,221.5	1,219.9	1,220.6	1,218.0	-2.6
Residential building.....	591.9	582.0	582.6	580.8	564.3	559.2	558.3	554.7	-3.6
Nonresidential building.....	685.7	673.3	682.3	693.7	657.2	660.7	662.3	663.3	1.0
Heavy and civil engineering construction.....	906.1	897.4	903.6	912.5	837.3	845.7	843.0	841.4	-1.6
Specialty trade contractors.....	3,645.0	3,578.7	3,636.6	3,659.0	3,461.1	3,456.5	3,465.7	3,464.1	-1.6
Residential specialty trade contractors.....	1,531.4	1,519.1	1,538.4	1,547.5	1,449.3	1,457.0	1,457.0	1,463.8	6.8
Nonresidential specialty trade contractors.....	2,113.6	2,059.6	2,098.2	2,111.5	2,011.8	1,999.5	2,008.7	2,000.3	-8.4
Manufacturing.....	11,646	11,796	11,807	11,857	11,551	11,724	11,760	11,757	-3
Durable goods.....	7,133	7,333	7,324	7,357	7,092	7,288	7,315	7,312	-3
Wood products.....	350.0	340.2	335.5	338.9	340.0	332.8	327.9	329.8	1.9
Nonmetallic mineral products.....	381.6	382.8	383.4	381.4	370.7	372.0	371.9	370.4	-1.5
Primary metals.....	365.1	386.3	385.9	387.1	365.0	384.8	386.5	386.0	-0.5
Fabricated metal products.....	1,304.7	1,365.3	1,369.6	1,372.7	1,296.1	1,360.8	1,366.3	1,360.9	-5.4
Machinery.....	999.0	1,050.7	1,053.1	1,054.8	997.6	1,046.1	1,048.6	1,052.5	3.9
Computer and electronic products <sup>1</sup> .....	1,106.2	1,129.4	1,131.8	1,132.5	1,103.0	1,125.6	1,128.9	1,130.0	1.1
Computer and peripheral equipment.....	162.6	171.7	172.9	172.6	162.4	172.0	172.5	172.5	0.0
Communication equipment.....	119.4	119.0	117.3	117.1	119.2	117.9	117.4	116.8	-0.6
Semiconductors and electronic components.....	374.8	385.4	387.9	390.6	373.2	384.3	387.3	389.7	2.4
Electronic instruments.....	405.6	404.9	404.8	403.9	404.3	403.4	403.4	402.7	-0.7
Electrical equipment and appliances.....	364.1	371.9	373.8	373.0	362.3	370.8	371.7	370.9	-0.8
Transportation equipment <sup>1</sup> .....	1,334.7	1,373.1	1,355.4	1,379.0	1,334.5	1,365.2	1,378.8	1,379.7	0.9
Motor vehicles and parts <sup>2</sup> .....	676.2	703.0	686.0	705.7	675.7	698.7	709.7	706.9	-2.8
Furniture and related products.....	361.4	354.4	357.2	356.7	356.9	351.1	354.6	352.0	-2.6
Miscellaneous manufacturing.....	566.2	578.8	578.0	580.9	566.0	579.2	579.8	580.1	0.3
Nondurable goods.....	4,513	4,463	4,483	4,500	4,459	4,436	4,445	4,445	0
Food manufacturing.....	1,486.7	1,447.5	1,469.4	1,478.0	1,449.2	1,443.0	1,447.3	1,442.1	-5.2
Beverages and tobacco products.....	185.1	189.8	191.3	195.0	181.4	185.8	186.5	189.6	3.1
Textile mills.....	119.0	122.9	122.7	122.4	118.8	122.2	123.0	122.1	-0.9
Textile product mills.....	118.3	117.5	116.6	115.5	118.8	116.5	116.0	115.6	-0.4
Apparel.....	157.6	156.5	153.4	156.1	155.8	155.2	153.3	154.4	1.1
Leather and allied products.....	28.4	29.5	28.9	28.1	28.1	29.1	29.4	28.0	-1.4
Paper and paper products.....	398.1	399.6	400.5	402.0	396.7	397.9	398.5	400.1	1.6
Printing and related support activities.....	486.5	470.2	467.6	469.8	485.8	468.9	468.1	468.9	0.8
Petroleum and coal products.....	117.4	115.1	115.7	114.1	114.1	111.8	111.3	110.7	-0.6
Chemicals.....	783.8	782.6	784.2	782.9	782.6	778.3	779.7	780.8	1.1
Plastics and rubber products.....	632.3	631.4	633.0	636.1	627.8	626.9	631.8	632.5	0.7
Private service-providing.....	90,192	91,739	91,631	91,620	89,671	90,962	91,066	91,086	20
Trade, transportation, and utilities.....	24,608	24,995	24,970	24,943	24,601	24,919	24,946	24,938	-8
Wholesale trade.....	5,478.2	5,577.8	5,576.6	5,571.1	5,454.5	5,542.7	5,544.7	5,546.3	1.6
Durable goods.....	2,731.8	2,790.9	2,791.4	2,794.2	2,718.5	2,777.4	2,776.6	2,780.5	3.9
Nondurable goods.....	1,938.3	1,964.6	1,963.6	1,957.0	1,930.5	1,947.0	1,949.5	1,948.5	-1.0
Electronic markets and agents and brokers.....	808.1	822.3	821.6	819.9	805.5	818.3	818.6	817.3	-1.3
Retail trade.....	14,422.6	14,570.2	14,604.4	14,582.2	14,412.6	14,550.6	14,577.0	14,569.2	-7.8
Motor vehicle and parts dealers <sup>1</sup> .....	1,642.0	1,687.6	1,696.4	1,696.4	1,622.9	1,670.0	1,676.5	1,677.3	0.8
Automobile dealers.....	1,012.6	1,045.0	1,049.6	1,051.0	1,004.5	1,039.5	1,041.9	1,042.9	1.0
Furniture and home furnishings stores.....	427.0	428.9	431.9	430.5	432.8	435.7	436.8	436.1	-0.7

See footnotes at end of table.

**ESTABLISHMENT DATA**

**Table B-1. Employees on nonfarm payrolls by industry sector and selected industry detail**

— Continued

[In thousands]

Industry	Not seasonally adjusted				Seasonally adjusted				Change from: July 2011 <sup>P</sup> - Aug. 2011 <sup>P</sup>
	Aug. 2010	June 2011	July 2011 <sup>P</sup>	Aug. 2011 <sup>P</sup>	Aug. 2010	June 2011	July 2011 <sup>P</sup>	Aug. 2011 <sup>P</sup>	
Retail trade - Continued									
Electronics and appliance stores.....	489.2	493.8	493.7	484.7	497.5	500.4	501.6	493.7	-7.9
Building material and garden supply stores...	1,128.7	1,178.6	1,148.4	1,129.5	1,118.9	1,121.6	1,119.7	1,121.1	1.4
Food and beverage stores.....	2,824.8	2,857.4	2,858.5	2,854.7	2,811.1	2,835.1	2,835.7	2,839.0	3.3
Health and personal care stores.....	975.6	971.2	975.1	974.5	976.3	969.4	976.7	974.7	-2.0
Gasoline stations.....	830.4	831.3	832.7	838.2	816.6	822.6	820.9	823.2	2.3
Clothing and clothing accessories stores.....	1,380.1	1,410.3	1,429.0	1,435.2	1,377.7	1,431.5	1,433.6	1,438.5	4.9
Sporting goods, hobby, book, and music stores.....	595.7	578.5	583.4	591.5	599.0	596.9	598.8	595.5	-3.3
General merchandise stores <sup>1</sup> .....	2,958.9	2,958.2	2,971.5	2,964.8	2,983.6	2,984.4	2,987.5	2,985.4	-2.1
Department stores.....	1,474.8	1,465.7	1,479.6	1,477.3	1,496.9	1,494.6	1,499.2	1,496.8	-2.4
Miscellaneous store retailers.....	762.0	770.2	778.4	772.1	757.9	766.3	772.0	766.8	-5.2
Nonstore retailers.....	408.2	404.2	405.4	410.1	418.3	416.7	417.2	417.9	0.7
Transportation and warehousing.....	4,154.6	4,291.6	4,233.1	4,234.9	4,184.1	4,273.6	4,272.6	4,270.2	-2.4
Air transportation.....	467.0	479.5	481.2	479.9	462.8	476.9	478.5	474.9	-3.6
Rail transportation.....	216.7	225.8	225.2	224.7	217.1	225.7	224.6	224.7	0.1
Water transportation.....	65.2	64.9	65.0	65.9	62.8	63.2	63.1	63.5	0.4
Truck transportation.....	1,272.0	1,298.7	1,300.2	1,305.7	1,248.4	1,282.2	1,283.2	1,282.3	-0.9
Transit and ground passenger transportation.....	367.4	445.3	384.1	378.4	433.7	447.0	444.8	446.7	1.9
Pipeline transportation.....	42.6	43.5	43.6	42.9	42.3	43.4	43.2	42.8	-0.4
Scenic and sightseeing transportation.....	35.5	36.4	37.8	37.2	27.5	29.6	28.6	28.8	0.2
Support activities for transportation.....	545.2	557.9	556.9	555.3	543.2	554.9	554.4	552.7	-1.7
Couriers and messengers.....	515.4	515.4	510.1	515.0	518.9	522.5	522.4	523.8	1.4
Warehousing and storage.....	627.6	624.2	629.0	629.9	627.4	628.2	629.8	630.0	0.2
Utilities.....	552.4	555.4	555.4	554.6	550.2	552.1	551.7	552.2	0.5
Information.....	2,717	2,696	2,681	2,638	2,711	2,682	2,679	2,631	-48
Publishing industries, except Internet.....	762.9	757.0	758.7	756.4	761.3	755.5	756.2	755.1	-1.1
Motion picture and sound recording industries.....	384.4	376.1	368.7	372.6	378.2	365.7	366.4	365.8	-0.6
Broadcasting, except Internet.....	295.0	295.0	294.3	292.2	295.7	294.9	294.3	293.1	-1.2
Telecommunications.....	892.1	866.0	857.4	814.6	892.0	867.5	862.1	814.8	-47.3
Data processing, hosting and related services.....	238.5	240.7	238.7	238.1	240.4	239.6	239.7	239.8	0.1
Other information services.....	143.6	160.9	162.7	163.6	143.0	158.6	160.6	162.0	1.4
Financial activities.....	7,658	7,656	7,667	7,651	7,616	7,609	7,602	7,605	3
Finance and insurance.....	5,688.9	5,683.6	5,682.4	5,668.9	5,684.0	5,668.5	5,660.9	5,660.9	0.0
Monetary authorities - central bank.....	20.8	21.3	21.7	22.0	20.6	21.2	21.5	21.8	0.3
Credit intermediation and related activities <sup>1</sup> .....	2,543.4	2,547.7	2,552.5	2,545.3	2,542.6	2,542.7	2,542.8	2,541.9	-0.9
Depository credit intermediation <sup>1</sup> .....	1,737.1	1,759.4	1,766.3	1,764.2	1,733.0	1,756.2	1,757.1	1,758.6	1.5
Commercial banking.....	1,311.5	1,326.8	1,331.8	1,329.7	1,308.8	1,324.5	1,325.5	1,326.2	0.7
Securities, commodity contracts, investments.....	801.9	812.4	806.9	803.3	801.2	809.9	804.3	802.2	-2.1
Insurance carriers and related activities.....	2,235.6	2,215.9	2,213.0	2,211.0	2,232.6	2,208.6	2,204.5	2,207.9	3.4
Funds, trusts, and other financial vehicles.....	87.2	86.3	88.3	87.3	87.0	86.1	87.8	87.1	-0.7
Real estate and rental and leasing.....	1,969.3	1,972.2	1,984.6	1,982.5	1,931.5	1,940.5	1,940.9	1,944.5	3.6
Real estate.....	1,410.1	1,419.2	1,428.3	1,426.5	1,389.5	1,403.4	1,404.3	1,405.6	1.3
Rental and leasing services.....	534.2	527.3	530.5	530.1	517.2	511.4	511.1	513.2	2.1
Lessors of nonfinancial intangible assets.....	25.0	25.7	25.8	25.9	24.8	25.7	25.5	25.7	0.2
Professional and business services.....	16,849	17,297	17,250	17,351	16,711	17,155	17,183	17,211	28
Professional and technical services <sup>1</sup> .....	7,391.0	7,607.2	7,616.4	7,623.7	7,430.6	7,628.1	7,640.7	7,656.8	16.1
Legal services.....	1,117.8	1,121.6	1,124.7	1,118.7	1,113.8	1,109.7	1,113.8	1,113.9	0.1
Accounting and bookkeeping services.....	815.8	866.2	850.0	852.5	887.6	928.0	923.2	922.4	-0.8
Architectural and engineering services.....	1,292.7	1,310.9	1,317.2	1,318.6	1,276.4	1,295.8	1,297.4	1,300.9	3.5
Computer systems design and related services.....	1,450.3	1,503.8	1,513.3	1,523.2	1,445.9	1,505.6	1,510.6	1,518.3	7.7
Management and technical consulting services.....	990.5	1,043.1	1,050.3	1,053.4	989.6	1,040.2	1,045.1	1,051.1	6.0
Management of companies and enterprises.....	1,875.4	1,894.0	1,894.9	1,895.6	1,864.9	1,882.5	1,884.8	1,884.1	-0.7
Administrative and waste services.....	7,582.1	7,795.6	7,738.6	7,831.8	7,415.8	7,644.2	7,657.3	7,670.3	13.0

See footnotes at end of table.

**ESTABLISHMENT DATA**

**Table B-1. Employees on nonfarm payrolls by industry sector and selected industry detail**

— Continued

[In thousands]

Industry	Not seasonally adjusted				Seasonally adjusted				Change from: July 2011 - Aug. 2011 <sup>P</sup>
	Aug. 2010	June 2011	July 2011 <sup>P</sup>	Aug. 2011 <sup>P</sup>	Aug. 2010	June 2011	July 2011 <sup>P</sup>	Aug. 2011 <sup>P</sup>	
Administrative and waste services - Continued									
Administrative and support services <sup>1</sup> .....	7,212.5	7,426.2	7,363.7	7,456.7	7,054.2	7,280.9	7,292.3	7,304.3	12.0
Employment services <sup>1</sup> .....	2,774.2	2,926.8	2,869.7	2,966.4	2,719.6	2,900.2	2,907.6	2,919.5	11.9
Temporary help services .....	2,128.9	2,252.7	2,202.0	2,271.4	2,090.2	2,234.2	2,235.4	2,240.1	4.7
Business support services .....	797.8	795.7	790.9	794.2	809.1	804.8	803.9	804.0	0.1
Services to buildings and dwellings .....	1,849.7	1,877.9	1,880.0	1,870.7	1,747.3	1,762.3	1,764.9	1,768.0	3.1
Waste management and remediation services .....	369.6	369.4	374.9	375.1	361.6	363.3	365.0	366.0	1.0
Education and health services .....	19,275	19,762	19,664	19,688	19,612	19,944	19,990	20,024	34
Educational services .....	2,846.7	3,002.9	2,925.2	2,899.7	3,160.3	3,203.5	3,216.7	3,215.1	-1.6
Health care and social assistance .....	16,428.1	16,759.0	16,738.4	16,788.0	16,451.2	16,740.8	16,773.7	16,809.2	35.5
Health care <sup>3</sup> .....	13,848.9	14,095.2	14,127.0	14,158.5	13,821.6	14,068.0	14,097.8	14,127.5	29.7
Ambulatory health care services <sup>1</sup> .....	6,002.0	6,143.6	6,157.7	6,180.8	5,996.1	6,135.6	6,152.8	6,170.9	18.1
Offices of physicians .....	2,320.3	2,358.6	2,366.5	2,373.3	2,318.8	2,356.5	2,364.0	2,369.6	5.6
Outpatient care centers .....	604.6	620.1	618.8	621.0	603.5	619.1	618.9	620.3	1.4
Home health care services .....	1,083.7	1,123.4	1,126.3	1,133.7	1,084.4	1,123.0	1,127.3	1,133.6	6.3
Hospitals .....	4,697.3	4,751.8	4,768.8	4,771.7	4,686.5	4,741.9	4,752.9	4,760.6	7.7
Nursing and residential care facilities <sup>1</sup> .....	3,149.6	3,199.8	3,200.5	3,206.0	3,139.0	3,190.5	3,192.1	3,196.0	3.9
Nursing care facilities .....	1,668.7	1,690.1	1,688.1	1,689.5	1,663.4	1,686.3	1,685.2	1,685.2	0.0
Social assistance <sup>1</sup> .....	2,579.2	2,663.8	2,611.4	2,629.5	2,629.6	2,672.8	2,675.9	2,681.7	5.8
Child day care services .....	803.8	834.7	789.6	803.7	851.5	850.8	853.3	853.5	0.2
Leisure and hospitality .....	13,673	13,815	13,881	13,843	13,051	13,202	13,214	13,216	2
Arts, entertainment, and recreation .....	2,184.5	2,148.4	2,203.4	2,148.7	1,925.2	1,891.9	1,896.3	1,887.4	-8.9
Performing arts and spectator sports .....	452.6	426.7	430.7	423.5	423.2	402.4	399.9	395.0	-4.9
Museums, historical sites, zoos, and parks .....	138.7	143.8	146.5	143.4	127.0	130.5	130.9	131.2	0.3
Amusements, gambling, and recreation .....	1,593.2	1,577.9	1,626.2	1,581.8	1,375.0	1,359.0	1,365.5	1,361.2	-4.3
Accommodation and food services .....	11,488.4	11,666.8	11,677.6	11,694.0	11,125.3	11,310.1	11,317.2	11,328.7	11.5
Accommodation .....	1,916.8	1,899.0	1,963.1	1,956.3	1,781.4	1,806.2	1,811.7	1,813.9	2.2
Food services and drinking places .....	9,571.6	9,767.8	9,714.5	9,737.7	9,343.9	9,503.9	9,505.5	9,514.8	9.3
Other services .....	5,412	5,518	5,518	5,506	5,369	5,451	5,452	5,461	9
Repair and maintenance .....	1,146.5	1,166.0	1,160.5	1,160.3	1,139.6	1,152.8	1,152.8	1,152.8	0.0
Personal and laundry services .....	1,263.8	1,300.1	1,294.0	1,295.3	1,258.2	1,284.1	1,286.8	1,288.5	1.7
Membership associations and organizations .....	3,001.4	3,051.4	3,063.5	3,050.0	2,970.8	3,013.7	3,012.6	3,019.9	7.3
Government .....	21,228	22,080	20,733	20,766	22,412	22,050	21,979	21,962	-17
Federal .....	2,949.0	2,846.0	2,854.0	2,839.0	2,927.0	2,829.0	2,824.0	2,822.0	-2.0
Federal, except U.S. Postal Service .....	2,300.0	2,224.1	2,223.3	2,221.7	2,275.7	2,202.2	2,198.1	2,201.2	3.1
U.S. Postal Service .....	648.9	622.3	630.6	617.1	651.7	626.6	625.4	620.7	-4.7
State government .....	4,856.0	4,869.0	4,770.0	4,798.0	5,132.0	5,091.0	5,074.0	5,079.0	5.0
State government education .....	2,080.0	2,143.9	2,076.9	2,087.1	2,378.1	2,387.0	2,389.3	2,387.9	-1.4
State government, excluding education .....	2,775.6	2,725.0	2,692.9	2,711.3	2,754.0	2,704.0	2,685.1	2,690.9	5.8
Local government .....	13,423.0	14,365.0	13,109.0	13,129.0	14,353.0	14,130.0	14,081.0	14,061.0	-20.0
Local government education .....	6,890.6	7,933.6	6,627.7	6,694.4	8,004.1	7,866.6	7,823.8	7,810.1	-13.7
Local government, excluding education .....	6,532.2	6,431.6	6,481.1	6,434.8	6,349.2	6,263.2	6,257.3	6,251.0	-6.3

1 Includes other industries, not shown separately.

2 Includes motor vehicles, motor vehicle bodies and trailers, and motor vehicle parts.

3 Includes ambulatory health care services, hospitals, and nursing and residential care facilities.

p Preliminary

**ESTABLISHMENT DATA**

**Table B-2. Average weekly hours and overtime of all employees on private nonfarm payrolls by industry sector, seasonally adjusted**

Industry	Aug. 2010	June 2011	July 2011 <sup>p</sup>	Aug. 2011 <sup>p</sup>
<b>AVERAGE WEEKLY HOURS</b>				
Total private.....	34.2	34.3	34.3	34.2
Goods-producing.....	39.7	39.9	39.8	39.8
Mining and logging.....	43.9	44.6	44.2	44.1
Construction.....	38.0	38.3	38.2	38.2
Manufacturing.....	40.2	40.3	40.3	40.3
Durable goods.....	40.5	40.6	40.7	40.6
Nondurable goods.....	39.9	39.8	39.7	39.8
Private service-providing.....	33.1	33.2	33.3	33.1
Trade, transportation, and utilities.....	34.3	34.5	34.4	34.4
Wholesale trade.....	38.3	38.6	38.5	38.5
Retail trade.....	31.4	31.4	31.4	31.3
Transportation and warehousing.....	38.4	38.6	38.5	38.5
Utilities.....	41.4	41.6	41.6	41.5
Information.....	36.7	36.6	36.5	36.4
Financial activities.....	37.0	37.1	37.4	37.1
Professional and business services.....	35.5	35.7	35.8	35.7
Education and health services.....	32.8	32.8	32.9	32.7
Leisure and hospitality.....	25.9	25.8	25.9	25.8
Other services.....	31.9	31.7	31.7	31.5
<b>AVERAGE OVERTIME HOURS</b>				
Manufacturing.....	3.0	3.1	3.1	3.2
Durable goods.....	2.8	3.1	3.1	3.1
Nondurable goods.....	3.2	3.2	3.2	3.3

p Preliminary

**ESTABLISHMENT DATA**

**Table B-3. Average hourly and weekly earnings of all employees on private nonfarm payrolls by industry sector, seasonally adjusted**

Industry	Average hourly earnings				Average weekly earnings			
	Aug. 2010	June 2011	July 2011 <sup>P</sup>	Aug. 2011 <sup>P</sup>	Aug. 2010	June 2011	July 2011 <sup>P</sup>	Aug. 2011 <sup>P</sup>
Total private.....	\$22.67	\$23.01	\$23.12	\$23.09	\$ 775.31	\$ 789.24	\$ 793.02	\$ 789.68
Goods-producing.....	24.14	24.39	24.46	24.46	958.36	973.16	973.51	973.51
Mining and logging.....	27.60	27.94	27.93	27.98	1,211.64	1,246.12	1,234.51	1,233.92
Construction.....	25.20	25.39	25.40	25.50	957.60	972.44	970.28	974.10
Manufacturing.....	23.43	23.67	23.78	23.73	941.89	953.90	958.33	956.32
Durable goods.....	24.91	25.21	25.32	25.28	1,008.86	1,023.53	1,030.52	1,026.37
Nondurable goods.....	21.04	21.10	21.18	21.13	839.50	839.78	840.85	840.97
Private service-providing.....	22.32	22.69	22.81	22.76	738.79	753.31	759.57	753.36
Trade, transportation, and utilities.....	19.72	20.01	20.11	20.04	676.40	690.35	691.78	689.38
Wholesale trade.....	26.21	26.23	26.40	26.18	1,003.84	1,012.48	1,016.40	1,007.93
Retail trade.....	15.60	15.78	15.92	15.80	489.84	495.49	499.89	494.54
Transportation and warehousing.....	21.02	21.71	21.74	21.94	807.17	838.01	836.99	844.69
Utilities.....	32.73	33.83	33.62	33.73	1,355.02	1,407.33	1,398.59	1,399.80
Information.....	30.66	31.49	31.40	31.52	1,125.22	1,152.53	1,146.10	1,147.33
Financial activities.....	27.28	27.73	27.67	27.77	1,009.36	1,028.78	1,034.86	1,030.27
Professional and business services.....	27.37	27.73	27.98	27.86	971.64	989.96	1,001.68	994.60
Education and health services.....	23.06	23.52	23.69	23.62	756.37	771.46	779.40	772.37
Leisure and hospitality.....	13.10	13.20	13.23	13.23	339.29	340.56	342.66	341.33
Other services.....	20.14	20.45	20.51	20.55	642.47	648.27	650.17	647.33

p Preliminary



**ESTABLISHMENT DATA**

**Table B-4. Indexes of aggregate weekly hours and payrolls for all employees on private nonfarm payrolls by industry sector, seasonally adjusted**

[2007=100]

Industry	Index of aggregate weekly hours <sup>1</sup>					Index of aggregate weekly payrolls <sup>2</sup>				
	Aug. 2010	June 2011	July 2011 <sup>P</sup>	Aug. 2011 <sup>P</sup>	Percent change from: July 2011 - Aug. 2011 <sup>P</sup>	Aug. 2010	June 2011	July 2011 <sup>P</sup>	Aug. 2011 <sup>P</sup>	Percent change from: July 2011 - Aug. 2011 <sup>P</sup>
Total private.....	92.1	93.7	93.8	93.6	-0.2	99.6	102.8	103.4	103.0	-0.4
Goods-producing.....	80.5	82.0	82.0	82.0	0.0	87.8	90.4	90.7	90.6	-0.1
Mining and logging.....	99.2	110.6	110.8	111.3	0.5	109.9	124.0	124.3	125.0	0.6
Construction.....	72.3	72.9	72.8	72.7	-0.1	79.2	80.4	80.3	80.6	0.4
Manufacturing.....	83.5	85.0	85.3	85.2	-0.1	91.0	93.6	94.3	94.1	-0.2
Durable goods.....	80.9	83.3	83.8	83.6	-0.2	89.5	93.3	94.3	93.8	-0.5
Nondurable goods.....	88.8	88.1	88.1	88.3	0.2	94.8	94.3	94.7	94.7	0.0
Private service-providing.....	95.3	97.0	97.4	96.8	-0.6	103.1	106.6	107.6	106.8	-0.7
Trade, transportation, and utilities.....	91.7	93.4	93.3	93.2	-0.1	97.3	100.6	100.9	100.6	-0.3
Wholesale trade.....	91.1	93.3	93.1	93.2	0.1	99.7	102.2	102.6	101.8	-0.8
Retail trade.....	91.9	92.8	93.0	92.6	-0.4	94.8	96.8	97.8	96.7	-1.1
Transportation and warehousing.....	92.0	94.4	94.1	94.1	0.0	98.1	104.0	103.9	104.8	0.9
Utilities.....	98.5	99.3	99.3	99.1	-0.2	106.5	111.0	110.3	110.5	0.2
Information.....	90.9	89.6	89.3	87.5	-2.0	99.2	100.5	99.8	98.2	-1.6
Financial activities.....	92.9	93.0	93.7	93.0	-0.7	98.9	100.7	101.2	100.8	-0.4
Professional and business services.....	93.3	96.3	96.8	96.6	-0.2	103.5	108.2	109.7	109.1	-0.5
Education and health services.....	104.7	106.5	107.0	106.6	-0.4	113.1	117.3	118.8	117.9	-0.8
Leisure and hospitality.....	96.4	97.2	97.7	97.3	-0.4	101.9	103.5	104.2	103.8	-0.4
Other services.....	94.9	95.7	95.8	95.3	-0.5	108.5	111.1	111.5	111.2	-0.3

1 The indexes of aggregate weekly hours are calculated by dividing the current month's estimates of aggregate hours by the corresponding 2007 annual average aggregate hours. Aggregate hours estimates are the product of estimates of average weekly hours and employment.

2 The indexes of aggregate weekly payrolls are calculated by dividing the current month's estimates of aggregate weekly payrolls by the corresponding 2007 annual average aggregate weekly payrolls. Aggregate payrolls estimates are the product of estimates of average hourly earnings, average weekly hours, and employment.

p Preliminary

**ESTABLISHMENT DATA**

**Table B-5. Employment of women on nonfarm payrolls by industry sector, seasonally adjusted**

Industry	Women employees (in thousands)				Percent of all employees			
	Aug. 2010	June 2011	July 2011 <sup>P</sup>	Aug. 2011 <sup>P</sup>	Aug. 2010	June 2011	July 2011 <sup>P</sup>	Aug. 2011 <sup>P</sup>
Total nonfarm.....	64,610	64,839	64,790	64,790	49.7	49.5	49.4	49.4
Total private.....	51,840	52,278	52,315	52,324	48.2	48.0	47.9	47.9
Goods-producing.....	4,085	4,062	4,062	4,054	23.0	22.5	22.5	22.4
Mining and logging.....	99	105	106	108	13.8	13.3	13.3	13.4
Construction.....	717	708	712	714	13.0	12.8	12.9	12.9
Manufacturing.....	3,269	3,249	3,244	3,232	28.3	27.7	27.6	27.5
Durable goods.....	1,730	1,724	1,721	1,714	24.4	23.7	23.5	23.4
Nondurable goods.....	1,539	1,525	1,523	1,518	34.5	34.4	34.3	34.2
Private service-providing.....	47,755	48,216	48,253	48,270	53.3	53.0	53.0	53.0
Trade, transportation, and utilities.....	9,987	10,001	10,002	9,996	40.6	40.1	40.1	40.1
Wholesale trade.....	1,637.2	1,665.2	1,669.9	1,671.0	30.0	30.0	30.1	30.1
Retail trade.....	7,208.4	7,192.8	7,193.2	7,189.7	50.0	49.4	49.3	49.3
Transportation and warehousing.....	1,003.5	1,008.2	1,004.5	1,001.3	24.0	23.6	23.5	23.4
Utilities.....	137.6	134.9	134.4	133.9	25.0	24.4	24.4	24.2
Information.....	1,104	1,087	1,088	1,076	40.7	40.5	40.6	40.9
Financial activities.....	4,481	4,444	4,439	4,433	58.8	58.4	58.4	58.3
Professional and business services.....	7,416	7,626	7,627	7,639	44.4	44.5	44.4	44.4
Education and health services.....	15,119	15,308	15,341	15,366	77.1	76.8	76.7	76.7
Leisure and hospitality.....	6,808	6,874	6,879	6,876	52.2	52.1	52.1	52.0
Other services.....	2,840	2,876	2,877	2,884	52.9	52.8	52.8	52.8
Government.....	12,770	12,561	12,475	12,466	57.0	57.0	56.8	56.8

p Preliminary

**ESTABLISHMENT DATA**

**Table B-6. Employment of production and nonsupervisory employees on private nonfarm payrolls by industry sector, seasonally adjusted<sup>1</sup>**

[In thousands]

Industry	Aug. 2010	June 2011	July 2011 <sup>p</sup>	Aug. 2011 <sup>p</sup>
Total private.....	88,554	89,825	89,955	89,988
Goods-producing.....	12,793	12,994	13,035	13,036
Mining and logging.....	538	593	599	602
Construction.....	4,161	4,176	4,183	4,175
Manufacturing.....	8,094	8,225	8,253	8,259
Durable goods.....	4,851	4,992	5,016	5,023
Nondurable goods.....	3,243	3,233	3,237	3,236
Private service-providing.....	75,761	76,831	76,920	76,952
Trade, transportation, and utilities.....	20,841	21,086	21,102	21,111
Wholesale trade.....	4,372.8	4,443.2	4,444.7	4,448.7
Retail trade.....	12,406.9	12,528.3	12,544.5	12,546.5
Transportation and warehousing.....	3,620.4	3,673.5	3,672.1	3,675.3
Utilities.....	441.0	441.1	440.4	440.0
Information.....	2,174	2,156	2,153	2,107
Financial activities.....	5,870	5,819	5,818	5,814
Professional and business services.....	13,682	14,104	14,133	14,165
Education and health services.....	17,193	17,468	17,516	17,540
Leisure and hospitality.....	11,507	11,644	11,641	11,652
Other services.....	4,494	4,554	4,557	4,563

<sup>1</sup> Data relate to production employees in mining and logging and manufacturing, construction employees in construction, and nonsupervisory employees in the service-providing industries. These groups account for approximately four-fifths of the total employment on private nonfarm payrolls.

<sup>p</sup> Preliminary

**ESTABLISHMENT DATA**

**Table B-7. Average weekly hours and overtime of production and nonsupervisory employees on private nonfarm payrolls by industry sector, seasonally adjusted<sup>1</sup>**

Industry	Aug. 2010	June 2011	July 2011 <sup>p</sup>	Aug. 2011 <sup>p</sup>
<b>AVERAGE WEEKLY HOURS</b>				
Total private.....	33.5	33.6	33.6	33.5
Goods-producing.....	40.5	40.9	40.9	40.8
Mining and logging.....	45.5	47.3	46.5	46.6
Construction.....	38.6	39.0	39.1	39.0
Manufacturing.....	41.1	41.4	41.4	41.3
Durable goods.....	41.3	41.8	41.8	41.8
Nondurable goods.....	40.9	40.7	40.8	40.6
Private service-providing.....	32.3	32.4	32.4	32.3
Trade, transportation, and utilities.....	33.4	33.7	33.7	33.5
Wholesale trade.....	38.1	38.5	38.5	38.3
Retail trade.....	30.3	30.4	30.5	30.3
Transportation and warehousing.....	37.3	37.9	37.7	37.7
Utilities.....	42.3	42.0	41.8	41.7
Information.....	36.4	36.3	36.2	35.9
Financial activities.....	36.4	36.3	36.3	36.2
Professional and business services.....	35.1	35.2	35.1	35.1
Education and health services.....	32.2	32.3	32.4	32.2
Leisure and hospitality.....	24.9	24.7	24.8	24.7
Other services.....	30.8	30.8	30.7	30.8
<b>AVERAGE OVERTIME HOURS</b>				
Manufacturing.....	3.8	4.0	4.1	4.1
Durable goods.....	3.8	4.2	4.2	4.2
Nondurable goods.....	3.9	3.8	4.0	4.0

<sup>1</sup> Data relate to production employees in mining and logging and manufacturing, construction employees in construction, and nonsupervisory employees in the service-providing industries. These groups account for approximately four-fifths of the total employment on private nonfarm payrolls.

<sup>p</sup> Preliminary

**ESTABLISHMENT DATA**

**Table B-8. Average hourly and weekly earnings of production and nonsupervisory employees on private nonfarm payrolls by industry sector, seasonally adjusted<sup>1</sup>**

Industry	Average hourly earnings				Average weekly earnings			
	Aug. 2010	June 2011	July 2011 <sup>p</sup>	Aug. 2011 <sup>p</sup>	Aug. 2010	June 2011	July 2011 <sup>p</sup>	Aug. 2011 <sup>p</sup>
Total private.....	\$19.13	\$19.43	\$19.49	\$19.47	\$ 640.86	\$ 652.85	\$ 654.86	\$ 652.25
Goods-producing.....	20.33	20.63	20.71	20.74	823.37	843.77	847.04	846.19
Mining and logging.....	23.87	24.42	24.59	24.58	1,086.09	1,155.07	1,143.44	1,145.43
Construction.....	23.30	23.57	23.67	23.79	899.38	919.23	925.50	927.81
Manufacturing.....	18.63	18.91	18.98	18.96	765.69	782.87	785.77	783.05
Durable goods.....	19.79	20.08	20.17	20.13	817.33	839.34	843.11	841.43
Nondurable goods.....	16.88	17.06	17.09	17.10	690.39	694.34	697.27	694.26
Private service-providing.....	18.87	19.17	19.23	19.20	609.50	621.11	623.05	620.16
Trade, transportation, and utilities.....	16.84	17.14	17.18	17.16	562.46	577.62	578.97	574.86
Wholesale trade.....	21.55	21.99	22.12	22.02	821.06	846.62	851.62	843.37
Retail trade.....	13.25	13.44	13.46	13.44	401.48	408.58	410.53	407.23
Transportation and warehousing.....	19.19	19.46	19.54	19.57	715.79	737.53	736.66	737.79
Utilities.....	30.27	30.80	30.94	30.95	1,280.42	1,293.60	1,293.29	1,290.62
Information.....	25.91	26.33	26.38	26.31	943.12	955.78	954.96	944.53
Financial activities.....	21.57	21.67	21.75	21.68	785.15	786.62	789.53	784.82
Professional and business services.....	22.93	23.18	23.23	23.21	804.84	815.94	815.37	814.67
Education and health services.....	20.20	20.68	20.78	20.77	650.44	667.96	673.27	668.79
Leisure and hospitality.....	11.35	11.47	11.50	11.49	282.62	283.31	285.20	283.80
Other services.....	17.08	17.23	17.27	17.27	526.06	530.68	530.19	531.92

<sup>1</sup> Data relate to production employees in mining and logging and manufacturing, construction employees in construction, and nonsupervisory employees in the service-providing industries. These groups account for approximately four-fifths of the total employment on private nonfarm payrolls.

<sup>p</sup> Preliminary

**ESTABLISHMENT DATA**

**Table B-9. Indexes of aggregate weekly hours and payrolls for production and nonsupervisory employees on private nonfarm payrolls by industry sector, seasonally adjusted<sup>1</sup>**

[2002=100]

Industry	Index of aggregate weekly hours <sup>2</sup>					Index of aggregate weekly payrolls <sup>3</sup>				
	Aug. 2010	June 2011	July 2011 <sup>p</sup>	Aug. 2011 <sup>p</sup>	Percent change from: July 2011 - Aug. 2011 <sup>p</sup>	Aug. 2010	June 2011	July 2011 <sup>p</sup>	Aug. 2011 <sup>p</sup>	Percent change from: July 2011 - Aug. 2011 <sup>p</sup>
Total private.....	99.1	100.8	101.0	100.7	-0.3	126.7	130.9	131.5	131.0	-0.4
Goods-producing.....	79.2	81.2	81.5	81.3	-0.2	98.6	102.6	103.3	103.2	-0.1
Mining and logging.....	130.1	149.1	148.0	149.1	0.7	180.6	211.7	211.7	213.1	0.7
Construction.....	80.4	81.5	81.9	81.5	-0.5	101.2	103.8	104.7	104.7	0.0
Manufacturing.....	76.3	78.2	78.4	78.3	-0.1	93.0	96.6	97.3	97.1	-0.2
Durable goods.....	75.3	78.4	78.8	78.9	0.1	93.0	98.3	99.2	99.1	-0.1
Nondurable goods.....	78.1	77.5	77.8	77.4	-0.5	93.2	93.5	94.0	93.5	-0.5
Private service-providing.....	104.6	106.4	106.6	106.3	-0.3	135.4	139.9	140.5	139.9	-0.4
Trade, transportation, and utilities.....	97.0	99.1	99.1	98.6	-0.5	116.6	121.1	121.5	120.7	-0.7
Wholesale trade.....	98.1	100.7	100.8	100.3	-0.5	124.6	130.5	131.3	130.2	-0.8
Retail trade.....	95.2	96.4	96.8	96.2	-0.6	108.1	111.1	111.7	110.9	-0.7
Transportation and warehousing.....	101.7	104.8	104.2	104.3	0.1	123.7	129.4	129.2	129.5	0.2
Utilities.....	95.4	94.8	94.2	93.9	-0.3	120.6	121.8	121.6	121.2	-0.3
Information.....	90.3	89.3	89.0	86.4	-2.9	115.9	116.5	116.2	112.5	-3.2
Financial activities.....	102.3	101.1	101.1	100.7	-0.4	136.4	135.4	135.9	135.0	-0.7
Professional and business services.....	107.6	111.3	111.2	111.4	0.2	146.8	153.5	153.7	153.9	0.1
Education and health services.....	119.4	121.7	122.4	121.8	-0.5	158.6	165.5	167.2	166.4	-0.5
Leisure and hospitality.....	105.0	105.4	105.8	105.5	-0.3	135.4	137.3	138.2	137.6	-0.4
Other services.....	97.1	98.4	98.1	98.6	0.5	120.8	123.5	123.5	124.1	0.5

1 Data relate to production employees in mining and logging and manufacturing, construction employees in construction, and nonsupervisory employees in the service-providing industries. These groups account for approximately four-fifths of the total employment on private nonfarm payrolls.

2 The indexes of aggregate weekly hours are calculated by dividing the current month's estimates of aggregate hours by the corresponding 2002 annual average aggregate hours. Aggregate hours estimates are the product of estimates of average weekly hours and employment.

3 The indexes of aggregate weekly payrolls are calculated by dividing the current month's estimates of aggregate weekly payrolls by the corresponding 2002 annual average aggregate weekly payrolls. Aggregate payrolls estimates are the product of estimates of average hourly earnings, average weekly hours, and employment.

p Preliminary