

Medieval to Modern: Recent Acquisitions of Drawings, Prints, and Illustrated Books

May 4, 2008 - November 2, 2008

Important: The images displayed on this page are for reference only and are not to be reproduced in any media. To obtain images and permissions for print or digital reproduction please provide your name, press affiliation and all other information as required(*) utilizing the order form at the end of this page.

Digital images will be sent via e-mail.

Please include a brief description of the kind of press coverage planned and your phone number so that we may contact you.

Usage: Images are provided exclusively to the press, and only for purposes of publicity for the duration of the exhibition at the National Gallery of Art. All published images must be accompanied by the credit line provided and with copyright information, as noted.

Catalog No. / File Name (If image available) | Caption (dimensions listed in centimeters followed by inches)

Image

Cat. No. 1 | File Name: 277-190.jpg

Antonio Canaletto, Italian (1697 - 1768)

The Maundy Thursday Festival before the Ducal Palace in Venice, c. 1766

pen and ink with wash over chalk, heightened with white

Paul Mellon Fund, 2007



Cat. No. 2

Joseph Heintz the Elder, Swiss (1564 - 1609)

The Fall of Phaeton, 1591

pen and ink with wash and watercolor over chalk, heightened with white, indented for transfer,

50 x 62 cm (19 11/16 x 24 7/16)

New Century Fund, 1997

Cat. No. 3

Joseph Heintz the Elder, Swiss (1564 - 1609)

The Daughters of the Po with River Gods, 1591

pen and ink with wash and watercolor over chalk, heightened with white, indented for transfer,

on two joined sheets of paper, 61.5 x 62.8 cm (24 3/16 x 24 3/4)

Purchased as the Gift of Dian Woodner, 2006

Cat. No. 4 | File Name: 277-004.jpg

The Master of Saint John the Baptist, German (active c. 1440s - 1450s)

Saint Bartholomew, 1440s-1450s

engraving, plate, shaped: 15.2 x 9.7 cm (6 x 3 13/16); sheet, cut around shaped plate: 15.5 x 10 cm (6 1/8 x 3 15/16)

Pepita Milmore Memorial Fund and Patrons' Permanent Fund, 2005



Catalog No. / File Name (If image available) | Caption (dimensions listed in centimeters followed by inches)

Image

Cat. No. 5 | File Name: 277-006.jpg
Martin Schongauer, German (c. 1450 - 1491)
Christ Enthroned, with Two Angels, 1475/1480
engraving, sheet: 16.9 x 12.2 cm (6 5/8 x 4 13/16)
Tennys New Century, and Pepita Memorial Funds, 2007



Cat. No. 6
Albrecht Dürer, German (1471 - 1528)
Willibald Pirckheimer, 1524
engraving, sheet, cut to plate mark: 10.8 x 11.2 cm (4 1/4 x 4 7/16)
Gift of C.G. Boerner, LLC, 2005

Cat. No. 7
Lucas Cranach the Elder, German (1472 - 1553)
Hercules Relieving Atlas of the Globe, c. 1530
pen and ink with wash over chalk, 13.8 x 20.5 cm (5 7/16 x 8 1/16)
Patrons' Permanent Fund, 2006

Cat. No. 8
Anthonie van Blocklandt, Netherlandish (c. 1533 - 1583)
Saint John the Baptist Preaching in the Wilderness, 1575/1580
pen and ink with wash over chalk, heightened with white, 37.7 x 24.9 cm (14 13/16 x 9 13/16)
Ailsa Mellon Bruce Fund, 2005

Cat. No. 9
Lambert Suavius, Flemish (c. 1510 - 1567)
The Raising of Lazarus, 1544
engraving, sheet, cut to plate mark: 20.6 x 32 cm (8 1/8 x 12 5/8)
Ailsa Mellon Bruce Fund, 2006

Cat. No. 10 | File Name: 277-010.jpg
Christoph Bockstorfer, German (1490 - 1553)
The Death of Virginia, c. 1525
pen and ink with wash and watercolor, 43.2 x 33 cm (17 x 13)
Anonymous Gift, 2005



Cat. No. 11
Bartholomaeus Spranger, Flemish (1546 - 1611)
Figure Studies (after Jacopo Tintoretto), 1565/1575
chalk heightened with white, 28.9 x 42.2 cm (11 3/8 x 16 5/8)
Gift of Benjamin and Lillian Hertzberg, 2004

Cat. No. 12
Hermann Weyer, German (1596 - c. 1621)
Saint Christopher, c. 1615
pen and ink over chalk, 29.2 x 19.6 cm (11 1/2 x 7 11/16)
Ailsa Mellon Bruce Fund, 2006

Catalog No. / File Name (If image available) | Caption (dimensions listed in centimeters followed by inches)

Image

Cat. No. 13

Friedrich Brentel, German (1580 - 1651)

The Crucifixion (after Aegidius Sadeler II after Christoph Schwartzt), 1627

gouache heightened with gold on vellum, 22 x 17 cm (8 11/16 x 6 11/16)

New Century Fund, 2004

Cat. No. 14

Fra Bartolommeo, Italian (1472 - 1517)

Two Angels with a Trumpet and a Standard, c. 1500

pen and ink, squared in chalk for transfer, 16.9 x 13 cm (6 5/8 x 5 1/8)

Woodner Collection, Gift of Andrea Woodner, 2006

Cat. No. 15

Domenico Beccafumi, Italian (c. 1485 - 1551)

A Standing Saint, 1515/1520

pen and ink

Gift of David E. Rust, 2007

Cat. No. 16

Marco Dente, Italian (c. 1493 - 1527)

Entellus and Dares, 1520s

engraving, sheet, cut to image: 30.4 x 26.9 cm (11 15/16 x 10 9/16)

Pepita Milmore Memorial Fund, 2005

Cat. No. 17

Jacopo Caraglio, Italian (1500 - 1565)

Fury (after Rosso Fiorentino), c. 1525

engraving, sheet: 25.1 x 18.7 cm (9 7/8 x 7 3/8)

Gift of Ruth Cole Kainen, 2006

Cat. No. 18

Giorgio Ghisi, Italian (1520 - 1582)

The Calumny of Apelles (after Luca Penni), 1560

engraving, plate: 36.9 x 32 cm (14 1/2 x 12 5/8); sheet: 38.2 x 33.3 cm (15 1/16 x 13 1/8)

Pepita Milmore Memorial Fund, 2006

Cat. No. 19

Adamo Scultori, Italian (c. 1530 - 1585)

Apollo and Diana in their Chariots (after Giulio Romano)

engraving, sheet, cut to plate mark: 53.7 x 23.9 cm (21 1/8 x 9 7/16)

Gift of Ruth Cole Kainen, 2006

Cat. No. 20

Léon Davent, French (?) (active 1540/1556)

Jupiter Bringing Water from the Styx to Psyche (after Giulio Romano), c. 1540

engraving, sheet, cut to plate mark: 20.3 x 39 cm (8 x 15 3/8)

Gift of Ruth Cole Kainen, 2006

Cat. No. 21

Antonio da Trento, Italian (c. 1508 - 1550 or after)

The Martyrdom of Two Saints (after Parmigianino), c. 1530

chiaroscuro woodcut, sheet: 29 x 48.2 cm (11 7/16 x 19)

Gift of Ruth Cole Kainen, 2006

Catalog No. / File Name (If image available) | Caption (dimensions listed in centimeters followed by inches)

Image

Cat. No. 22

Cherubino Alberti, Italian (1553 - 1615)

An Archer Shooting a Crossbow (after Lelio Orsi), 1579

engraving, sheet, cut inside plate mark: 22.1 x 14 cm (8 11/16 x 5 1/2)

Ailsa Mellon Bruce Fund, 2005

Cat. No. 23

Battista Angolo del Moro, Italian (c. 1515 - 1573)

A Tomb of a Bishop (after Parmigianino), 1540s

etching with engraving, plate: 36 x 25.7 cm (14 3/16 x 10 1/8); sheet: 36.2 x 25.8 cm (14 1/4 x 10 3/16)

Gift of Lesley Hill and Alan Stone, 2005

Cat. No. 24

Girolamo Muziano, Italian (1528 or 1532 - 1592)

Christ on the Cross, 1560s

chalk, squared for transfer, 40.5 x 28.1 cm (15 15/16 x 11 1/16)

Gift of John and Alice Steiner, 2004

Cat. No. 25 | File Name: 277-005.jpg

Jean Poyet, French (c. 1445 - before 1504)

The Coronation of Solomon by the Spring at Gihon, c. 1500

pen and ink with watercolor, heightened with white, 21.5 x 14.5 cm (8 7/16 x 5 11/16)

Patrons' Permanent Fund, 2006



Cat. No. 26 | File Name: 277-073.jpg

Jacques Androuet Ducerceau, French (1515 - after 1584)

A Triumphal Arch with Ornamental Obelisks and Caparisoned Horses, c. 1570

pen and ink with wash over chalk on vellum, 41.6 x 52.4 cm (16 3/8 x 20 5/8)

Ailsa Mellon Bruce Fund, 2006



Cat. No. 27 | File Name: 277-019.jpg

Giulio Clovio, Croatia (1498 - 1578)

The Lamentation, c. 1550

gouache heightened with gold on vellum, 21.6 x 14.5 cm (8 1/2 x 5 11/16)

Patrons' Permanent Fund, 2006



Cat. No. 28 | File Name: 277-021.jpg

Alessandro Allori, Italian (1535 - 1607)

A Pearl Diver, c. 1570

chalk, 30.2 x 21 cm (11 7/8 x 8 1/4)

Gift of David E. Rust, 2005



Catalog No. / File Name (If image available) | Caption (dimensions listed in centimeters followed by inches)

Image

Cat. No. 29

Anonymous Netherlandish , Netherlandish (15th Century)

The Annunciation and Precedents and The Nativity and Precedents, 1460s

colored woodcuts in "Biblia Pauperum" (Netherlands, 1460s), sheet: 27.5 x 21 cm (10 13/16 x 8 1/4); 28.3 x 21.8 cm (11 1/8 x 8 9/16)

Anonymous Gift, 2005

Cat. No. 30 | File Name: 277-077.jpg

Albrecht Dürer, German (1471 - 1528)

A Pastoral Landscape with Shepherds Playing a Viola and Panpipes, 1496/1497

watercolor and gouache heightened with pen and ink and gold, in Theocritus' "Idylls" (Aldus Manutius, Venice, 1495 [recte:1496]), page size: 31 x 20.3 cm (12 3/16 x 8); overall size, book closed: 32.4 x 21.6 cm (12 3/4 x 8 1/2)

Woodner Collection, 2005



Cat. No. 31 | File Name: 277-078.jpg

Hans Weiditz, designer, German (1500 or before - c. 1536)

The Man of Beauty and Virtue and Pallas Athena with the Spider , c. 1520

woodcuts in Petrarch, "Von der Artzney bayder Gluck" (Heinrich Steiner, Augsburg, 1532), bk: 30.8 x 21 x 5.6 cm (12 1/8 x 8 1/4 x 2 3/16)

Anonymous Gift, 2007.23.1



Cat. No. 32

Hans Weiditz, designer, German (1500 or before - c. 1536)

No one and the Vanities of the World , 1518

woodcut in Ulrich von Hutten, "OYTIS.NEMO" (Miller, Augsburg, 1518), image: 18.9 x 13.7 cm (7 7/16 x 5 3/8); accessory size: 19.2 x 14.2 x .7 cm (7 9/16 x 5 9/16 x 1/4)

William B. O'Neal Fund, 2005

Cat. No. 33

Hieronimus do Sanctis, Italian (15th Century)

The Eclipse of the Moon and The Eclipse of the Sun, 1485

color woodcuts in Johannes de Sacrobosco, "Sphaera Mundi" (Erhard Ratdolt, Venice, 1485)

William B. O'Neal Fund, 2007

Cat. No. 34

Attributed to Bartolommeo di Giovanni, Designer, Italian (active c. 1480 - 1500)

A Benedictine Monk Arguing with Another Benedictine, a Franciscan, and Five Gentlemen , 1496

woodcut in Domenico Benivieni, "Tractato...in Defensione...da Frate Hieronymo da Ferrera" (Francesco Bonaccorsi, Florence, 1496), sheet: 20.6 x 14 cm (8 1/8 x 5 1/2); book: 21.9 x 14.6 x 1.1 cm (8 5/8 x 5 3/4 x 7/16)

Anonymous Gift, 2004

Cat. No. 35

Joris van der Haagen, Dutch (1615 - 1669)

Woods at Night with Travelers, c. 1650

brush and wash on blue paper heightened with white, 22.4 x 28.2 cm (8 13/16 x 11 1/8)

Purchased as the Gift of Diane A. Nixon, 2006

Catalog No. / File Name (If image available) | Caption (dimensions listed in centimeters followed by inches) Image

Cat. No. 36
Nicolas Cochin, French (1610 - 1686)
The Adoration of the Magi, c. 1640
etching with engraving, sheet: 24.4 x 33.8 cm (9 5/8 x 13 5/16)
Ailsa Mellon Bruce Fund, 2006

Cat. No. 37
François Verdier, French (1651 - 1730)
The Rape of Deianeira, c. 1690
chalk with wash, 24.7 x 33.8 cm (9 3/4 x 13 5/16)
Ailsa Mellon Bruce Fund, 2006

Cat. No. 38
Nicolaes Pietersz Berchem, Dutch (1620 - 1683)
A Northern Landscape Fantasy Evoking Tivoli, c. 1664
chalk, 18 x 27.3 cm (7 1/16 x 10 3/4)
Ailsa Mellon Bruce Fund, 2004

Cat. No. 39
Giovanni Battista Paggi, Italian (1554 - 1627)
The Madonna and Child in Glory Adored by Saints, c. 1600
pen and ink over chalk, 31 x 21.5 cm (12 3/16 x 8 7/16)
Ailsa Mellon Bruce Fund, 2004

Cat. No. 40
Giovanni Benedetto Castiglione, Italian (1609 - 1664)
The Madonna and Child Adored by Angels, 1650/1655
etching, plate, cut within plate mark at top: 43.4 x 31.1 cm (17 1/16 x 12 1/4); sheet: 43.6 x 31.5 cm (17 3/16 x 12 41/16)
Ruth Cole Kainen Fund, 2005

Cat. No. 41
Robert Nanteuil, French (1623 - 1678)
Pompe de Bellievre, 1657
engraving, plate: 32.5 x 24.8 cm (12 13/16 x 9 3/4); sheet: 33.3 x 25.6 cm (13 1/8 x 10 1/16)
Ailsa Mellon Bruce Fund, 2006

Cat. No. 42
Attributed to Claude Mellan, French (1598 - 1688)
A Young Nun, c. 1670
graphite and chalk, 21 x 15.1 cm (8 1/4 x 5 15/16)
Ailsa Mellon Bruce Fund, 2006

Cat. No. 43
Jean-Baptiste Monnoyer, French (1636 - 1699)
A Basket of Spring Flowers, c. 1680
etching and engraving, image: 48.4 x 42 cm (19 1/16 x 16 9/16); sheet: 49.6 x 43.5 cm (19 1/2 x 17 1/8)
Ailsa Mellon Bruce Fund, 2007

Catalog No. / File Name (If image available) | Caption (dimensions listed in centimeters followed by inches)

Image

Cat. No. 44

Elias Christoph Heiss, German (1660 - 1731)

Floral Still Life with a Sunflower, c. 1690

mezzotint, sheet, cut within plate mark: 18.2 x 14.4 cm (7 3/16 x 5 11/16)

Gift of Christopher Mendez, 2007

Cat. No. 45

Jean Morin, French (c. 1600 - 1650)

Still Life with a Skull and a Vase of Roses (after Philippe de Champagne), 1645/1650

etching with engraving, sheet, cut within plate mark: 38.1 x 31.3 cm (15 x 12 5/16)

Gift of David and Elizabeth Tunick, 2005

Cat. No. 46

Jonas Umbach, German (c. 1624 - 1693)

A Woodland Pond with a Hunter, 1660s/1670s

chalk on a ledger page lightly ruled with ink, 19.6 x 26.5 cm (7 11/16 x 10 7/16)

Ailsa Mellon Bruce Fund, 2005

Cat. No. 47

Jonas Umbach, German (c. 1624 - 1693)

A Waterfall Between Rocky Cliffs, 1660s/1670s

chalk on a ledger page lightly ruled with ink, 19.2 x 26.5 cm (7 9/16 x 10 7/16)

Ailsa Mellon Bruce Fund, 2005

Cat. No. 48 | File Name: 277-087.jpg

Rembrandt van Rijn, Dutch (1606 - 1669)

Abraham Entertaining the Angels, 1656

etching and drypoint on japan paper, plate: 15.8 x 12.7 cm (6 1/4 x 5); sheet: 16.1 x 13 cm (6 5/16 x 5 1/8)

New Century Fund, 2005



Cat. No. 49 | File Name: 277-191.jpg

Rembrandt van Rijn, Dutch (1606 - 1669)

A Peasant Family Walking, c. 1634

etching, sheet: 6.2 x 4.8 cm (2 7/16 x 1 7/8)

Gift of Lt. Col. and Mrs. William K. Konze, 2007.43.1



Cat. No. 50

Anonymous Italian, Italian (17th Century)

An Elaborate Altar of Colored Marble Ornamented with Sculptures, c. 1600

pen and ink with wash, watercolor and gouache, 43 x 38.3 cm (16 15/16 x 15 1/16)

William B. O'Neal Fund, 2004

Cat. No. 51

Antoine Jacquard, French (died 1652)

Self-Portrait as an Armorer, c. 1620

engraving, sheet, cut within plate mark: 16.6 x 11.9 cm (6 9/16 x 4 11/16)

Ellen von Seggern Richter and Jan Paul Richter, 2007.46.1

Catalog No. / File Name (If image available) | Caption (dimensions listed in centimeters followed by inches)

Image

Cat. No. 52

Mathurin Robelot, French (active early 17th century)

Self-Portrait as a Locksmith, c. 1630

engraving, sheet, cut within plate mark: 24.2 x 17.8 cm (9 1/2 x 7)

Ailsa Mellon Bruce Fund, 2007.45.4

Cat. No. 53

Francesco Villamena, Italian (1566 - 1624)

Saint Jerome, c. 1600

engraving, sheet: 35.6 x 26 cm (14 x 10 1/4)

Gift of Lesley Hill and Alan Stone, 2005

Cat. No. 54

Jacques de Gheyn III, Dutch (c. 1596 - 1641)

Pittacus Mitylanaeus, 1616

etching, plate: 30.5 x 19.1 cm (12 x 7 1/2); sheet: 30.6 x 19.2 cm (12 1/16 x 7 9/16)

Ailsa Mellon Bruce Fund, 2007

Cat. No. 55

Daniel Nikolaus Chodowiecki, German (1726 - 1801)

The Card Game, 1758

etching and aquatint with touches of engraving, plate: 7.9 x 10.9 cm (3 1/8 x 4 5/16); sheet: 11.9 x 14.7 cm (4 11/16 x 5 13/16)

Katharine Shepard Fund, 2006

Cat. No. 56

Johann Christoph Dietzsch, German (1710 - 1769)

A Thistle with Insects, c. 1750

gouache on black prepared vellum, sheet: 28.6 x 20.6 cm (11 1/4 x 8 1/8)

Gift of J. Carter Brown, 2007

Cat. No. 57

Christoph Nathe, German (1753 - 1806)

Lusatian Landscape with the Landeskrone Mountain, c. 1790

pen and ink with wash over graphite, 23.2 x 36.8 cm (9 1/8 x 14 1/2)

Ailsa Mellon Bruce Fund, 2007

Cat. No. 58

Anthony Devis, British (1729 - 1817)

View of the Needles, and White Cliffs, 1790s

watercolor with pen and ink over graphite, 36.2 x 50.4 cm (14 1/4 x 19 13/16)

Ailsa Mellon Bruce Fund, 2006

Cat. No. 59

John White Abbott, British (1763 - 1851)

Peamore, Devon, 1799

watercolor with pen and ink over graphite on eight joined sheets of paper, on the artist's original mount, image: 45.2 x 57.3 cm (17 13/16 x 22 9/16)

Paul Mellon Fund, 2007

Catalog No. / File Name (If image available) | Caption (dimensions listed in centimeters followed by inches)

Image

Cat. No. 60

Neapolitan 18th Century and Francesco Londonio, Italian (1723-1783)

Trompe l'Oeil: Prints of Landscapes and Sheep, 1790s

etchings and color etching with touches of engraving and watercolor on blue paper, plate: 25.8 x 37.5 cm (10 3/16 x 14 3/4); sheet: 29 x 42 cm (11 7/16 x 16 9/16)

Ellwanger/Mescha Collection, 2006

Cat. No. 61

Vitus Felix Rigl, German (c. 1717 - 1779)

Absalom Orders the Murder of Amnon at a Feast, 1760s

pen and ink with wash, heightened with white, on two joined sheets of blue paper, 51.7 x 69.5 cm (20 3/8 x 27 3/8)

Ailsa Mellon Bruce Fund, 2005

Cat. No. 62

Marco Ricci, Italian (1676 - 1729)

Capriccio of Antique Ruins with Men Gazing at a Classical Orator, 1720s

etching [working proof], plate: 29.8 x 43 cm (11 3/4 x 16 15/16); sheet: 31 x 47.2 cm (12 3/16 x 18 9/16)

Pepita Milmore Memorial Fund, 2005

Cat. No. 63 | File Name: 277-041.jpg

Gaetano Gandolfi, Italian (1734 - 1802)

Orpheus and Eurydice, 1802

black and white chalk, 44.5 x 31.8 cm (17 1/2 x 12 1/2)

Gift of David E. Rust, 2006



Cat. No. 64

Pierre-Adrien Pâris, French (1745 - 1819)

An Architectural Fantasy with Ruins of a Circular Temple, c. 1785

pen and ink with watercolor and gouache, 39.3 x 50 cm (15 1/2 x 19 11/16)

New Century Fund, 2004

Cat. No. 65

François-André Vincent, French (1746 - 1816)

Noah Leading the Animals into the Ark (after Giovanni Benedetto Castiglione), 1774

brush and wash over chalk, heightened with white, on brown (faded blue?) paper

Ailsa Mellon Bruce Fund, 2007

Cat. No. 66

Giovanni Benedetto Castiglione, Italian (1609 or before - 1664)

Noah Leading the Animals into the Ark, c. 1655

brush and oil on brown paper, 39.4 x 54.8 cm (15 1/2 x 21 9/16)

Gift (Partial and Promised) of Gilbert Butler, in Honor of the 50th Anniversary of the National Gallery of Art, 1991

Catalog No. / File Name (If image available) | Caption (dimensions listed in centimeters followed by inches)

Image

Cat. No. 67 | File Name: 277-045.jpg
François Boucher, French (1703 - 1770)
Aurora Heralding the Arrival of the Morning Sun, 1765/1767
chalk heightened with white, octagonal: 46 x 40.2 cm (18 1/8 x 15 13/16)
Purchased as the Gift of Dian Woodner, 2006



Cat. No. 68
Johann Esaias Nilson, German (1721 - 1788)
Two Actors Peeking through a Theater Curtain while Others Prepare the Footlights, 1747
pen and ink with wash, 25.9 x 36.9 cm (10 3/16 x 14 1/2)
Ailsa Mellon Bruce Fund, 2004

Cat. No. 69
Richard Cosway, British (c. 1741-1821)
Maria Cosway with Her Daughter Louisa, c. 1794
graphite and chalk with wash, 27 x 11.1 cm (10 5/8 x 4 3/8)
Joan and David Maxwell Fund, 2005

Cat. No. 70
Gilles Demarteau the Elder, French (1722 - 1776)
A Satyr Perched on a Pediment (after René Michel Slodtz after Annibale Carracci), c. 1760
color chalk manner etching, plate: 55.6 x 39 cm (21 7/8 x 15 3/8); sheet: 67 x 50 cm (26 3/8 x 19 11/16)
Ellwanger/Mescha Collection, in honor of Margaret Morgan Grasselli, 2006

Cat. No. 71
Gilles-Antoine Demarteau, French (1750 - 1802)
A Young Woman Standing in a Park (after Jean-Baptiste Le Prince), c. 1770
color chalk manner etching, printed from two plates, sheet: 35.8 x 26.6 cm (14 1/8 x 10 1/2)
Phillips Family Fund, 2006

Cat. No. 72
Jean-Jacques de Boissieu, French (1736 - 1810)
A Sunlit Landscape with Hilltop Houses, 1780s
pen and ink with wash over graphite, 26.8 x 38.4 cm (10 9/16 x 15 1/8)
Ailsa Mellon Bruce Fund, 2007

Cat. No. 73
Charles-Melchior Descourtis, French (1753 - 1820)
La Lutschinen Sortant du Glacier (after Caspar Wolf) [The Lutschinen River flowing from the Galcier], c. 1784
color wash manner etching, printed from multiple plates, plate: 31.9 x 43.6 cm (12 9/16 x 17 3/16); sheet: 33.9 x 49 cm (13 3/8 x 19 5/16)
Gift of Ivan E. and Winifred Phillips in Memory of Neil Phillips, 2006

Cat. No. 74
Attributed to Charles Eisen, French (1720 - 1778)
Two Putti Playing with Swans, c. 1760s
chalk, round: 25 cm (9 13/16)
Gift of Ivan E. and Winifred Phillips in Honor of Andrew Robison, 2006

Catalog No. / File Name (If image available) | Caption (dimensions listed in centimeters followed by inches)

Image

Cat. No. 75 | File Name: 277-036.jpg
Thomas Gainsborough, British (1727 - 1788)
A Landscape with Cattle by a Cottage, late 1770s
chalk on gray paper heightened with white, 20.8 x 27.3 cm (8 3/16 x 10 3/4)
Gift (Partial and Promised) of Mimi and Sanford Feld, 2005



Cat. No. 76
Sir John Baptiste de Medina, designer, Flemish (1659 - 1710)
Satan and the Rebel Angels in Hell, 1688
engraving in John Milton, "Paradise Lost" (Jacob Tonson, London, 1688), bk: 39.4 x 25.1 x 3.8 cm
(15 1/2 x 9 7/8 x 1 1/2)
William B. O'Neal Fund, 2005

Cat. No. 77
Charles Moette, French (1620-1692)
The Dog Paddle, 1696
etching in Melchisedech Thevenot, "L'Art de Nager" (Thomas Moette, Paris, 1696), page size:
14.3 x 7.6 cm (5 5/8 x 3); book: 14.6 x 8.3 x 1.6 cm (5 3/4 x 3 1/4 x 5/8)
William B. O'Neal Fund, 2004

Cat. No. 78
Johann Elias Ridinger, German (1698 - 1767)
A Splendid Young Stag before a Wattle Fence, 1736
graphite and wash, 27 x 39.2 cm (10 5/8 x 15 7/16)
Ailsa Mellon Bruce Fund, 2006

Cat. No. 79
Johann Elias Ridinger, German (1698 - 1767)
"Ein Hirsch von 8. änden "A Stag with Eight Points", 1736
etching with engraving in Elias Ridinger and Barthold Heinrich Brockes, "Betrachtung der Wilden
Theire" (Ridinger. Augsburg, 1736), plate: 43.5 x 60.3 cm (17 1/8 x 23 3/4); book: 44.5 x 62.2 x
2.2 cm (17 1/2 x 24 1/2 x 7/8)
Ailsa Mellon Bruce and Professor William B. O'Neal Funds, 2005

Cat. No. 80
Giovanni Carlo Galli Bibiena, designer, Italian (1717-1760)
"King Poro of India and his General Gandarte in the Royal Palace", 1755
etching with engraving in Pietro Metastasio, "Alessandro nell'Indie" (Regia Stamperia Sylviana,
Lisbon, 1755), plate: 19.4 x 26 cm (7 5/8 x 10 1/4); book: 20.2 x 14.6 x 1.9 cm (7 15/16 x 5 3/4 x
3/4)
William B. O'Neal Fund, 2005

Cat. No. 81 | File Name: 277-100.jpg
Alessandro Longhi, Italian (1733 - 1813)
Self Portrait, 1760/1762
Etching with touches of engraving in Alessandro Longhi, "Compendio delle Vite de' Pittori
Veneziani Istorici" (Longhi, Venice, 1762), book: 51.8 x 37.8 x 3.2 cm (20 3/8 x 14 7/8 x 1 1/4)
B.H. Breslauer Foundation Fund, 2006



Catalog No. / File Name (If image available) | Caption (dimensions listed in centimeters followed by inches)

Image

Cat. No. 82

John Hill , American (1770 - 1850)

New York from Weehawk (after William Guy Wall), 1823

hand-colored etching and aquatint with engraved caption, image: 40 x 62.4 cm (15 3/4 x 24 9/16)

Purchased as the Gift of Donald and Nancy de Laski, 2006

Cat. No. 83

John Hill , American (1770 - 1850)

New York from Heights Near Brooklyn (after William Guy Wall), 1823

hand-colored etching and aquatint with engraved caption, image: 40 x 62.6 cm (15 3/4 x 24 5/8)

Purchased as the Gift of Jo Ann and Julian Ganz in memory of Margaret and Raymond Horovitz, 2006

Cat. No. 84 | File Name: 277-064.jpg

John Vanderlyn, American (1775 - 1852)

A Muse, c. 1816

charcoal and white chalk heightened with white on pinkish-tan paper, squared for transfer, 50.1 x 47 cm (19 3/4 x 18 1/2)

Gift of the Monica and Hermen Greenberg Foundation in honor of Monica Lind Greenberg, 2006



Cat. No. 85

John Henry Hill, American (1839 - 1922)

A Golden Robin , 1866

watercolor on paper, sight: 12.7 x 22.5 cm (5 x 8 7/8)

Gift (Partial and Promised) of William and Abigail Gerds, 2004

Cat. No. 86

Constant Troyon, French (1810 - 1865)

A Windmill against a Cloudy Sky, c. 1848

oil paint over chalk on brown paper, 46.7 x 36.5 cm (18 3/8 x 14 3/8)

Purchased as the Gift of Andrea Woodner Fund, 2007

Cat. No. 87

Alexandre Desgoffe, French (1805 - 1882)

Cliff and Sea in Normandy, 1852

pastel, 22 x 32 cm (8 11/16 x 12 5/8)

Gift of Jill Newhouse, 2006

Cat. No. 88 | File Name: 277-113.jpg

Ludwig Johann Passini, German (1832 - 1903)

Monks Buying Fish before a Portal of the Madonna della Misericordia, 1855

watercolor and gouache with gum arabic over graphite, 46.2 x 32.9 cm (18 3/16 x 12 15/16)

Alexander M. and Judith W. Laughlin Fund, 2005



Catalog No. / File Name (If image available) | Caption (dimensions listed in centimeters followed by inches)

Image

Cat. No. 89 | File Name: 277-065.jpg
Carl Morgenstern, German (1811 - 1893)
A Clump of Trees by a Rocky Stream in the Ramsau, c. 1832
watercolor and graphite, 35.3 x 23.2 cm (13 7/8 x 9 1/8)
Alexander M. and Judith W. Laughlin Fund, 2005



Cat. No. 90 | File Name: 277-049.jpg
Francis Danby, Irish (1793 - 1861)
St. Vincent's Rocks and the Avon Gorge, c. 1816
watercolor and graphite, 19.5 x 29.9 cm (7 11/16 x 11 3/4)
Gift (Partial and Promised) of Mimi and Sanford Feld, 2005



Cat. No. 91
Peter De Wint, British (1784 - 1849)
Travelers on the Sands near Redcar, c. 1835
watercolor over graphite with gouache and scratching out, 49.1 x 71.4 cm (19 5/16 x 28 1/8)
Purchased as Gift of Dian Woodner, 2007

Cat. No. 92 | File Name: 277-068.jpg
Charles de Wolf Brownell, American (1822 - 1909)
East River, Sunrise, 1862
watercolor and gouache with touches of graphite, 13.3 x 21.4 cm (5 1/4 x 8 7/16)
Gift of the Monica and Hermen Greenberg Foundation in honor of Monica Lind Greenberg, 2005



Cat. No. 93
Fidelia Bridges, American (1834 - 1923)
Pink Roses, 1875
watercolor, 35.6 x 25.4 cm (14 x 10)
Gift (Partial and Promised) of William and Abigail Gerdts, 2004

Cat. No. 94
Sébastien-Louis-Guillaume Norblin de la Gourdain, French (1796 - 1884)
Castor and Pollux Rescuing Helen, 1818
, 32.2 x 38.8 cm (12 11/16 x 15 1/4)
Ailsa Mellon Bruce Fund, 2006

Cat. No. 95
Giuseppe Borsato, Italian (1770 - 1849)
Fantasy of a Magnificent Ancient Mausoleum, 1810/1820
pen and ink with watercolor over graphite, 40.7 x 55.9 cm (16 x 22)
William B. O'Neal Fund, 2004

Cat. No. 96
François-Édouard Bertin, French (1797 - 1871)
Sorrento, c. 1825
chalk heightened with white on golden paper, 42.5 x 56.5 cm (16 3/4 x 22 1/4)
Gift of Donald Stone in memory of Albert Millstine, 2005

Catalog No. / File Name (If image available) | Caption (dimensions listed in centimeters followed by inches)

Image

Cat. No. 97

Théodore Chassériau, French (1819 - 1856)

Auguste Ottin, 1833

graphite with stumping on oatmeal paper, 40.8 x 29.5 cm (16 1/16 x 11 5/8)

Helen Porter and James T. Dyke Fund, 2006

Cat. No. 98

Adolphe Appian, French (1818 - 1898)

A Great Beech Tree at the Edge of a Wood, c. 1840

chalk with wash, heightened with white on gray paper, 47.2 x 62.9 cm (18 9/16 x 24 3/4)

Purchased as the Gift of Karen B. Cohen in Honor of Andrew Robison, 2005

Cat. No. 99

Adolph Menzel, German (1815 - 1905)

Richard Menzel Posing in Eighteenth-Century Costume, c. 1854

graphite with stumping, heightened with yellow on brown paper, 29.5 x 16.5 cm (11 5/8 x 6 1/2)

Gift of C.G. Boerner, LLC, 2005

Cat. No. 100

Maxime Lalanne, French (1827 - 1886)

Cliff by the Sea, c. 1868

charcoal with stumping, reasure, and scratching out, 31.2 x 46.2 cm (12 5/16 x 18 3/16)

Gift of Helen Porter and James T. Dyke, 2006

Cat. No. 101 | File Name: 277-111.jpg

Joseph Mallord William Turner, British (1775 - 1851)

Oberwesel, 1840

watercolor and gouache over graphite with scratching-out, 35 x 53.1 cm (13 3/4 x 20 7/8)

Paul Mellon Fund, 2007



Cat. No. 102 | File Name: 277-123.jpg

Frederick Trap Friis, American (1865 - 1909)

Woman Floating in a River Attended by Two Female Spirits, c. 1895

charcoal and graphite heightened with white and touches of orange, irregular: 48.2 x 63.2 cm (19 x 24 7/8)

Mary Hopkins Gibb Fund, 2007



Cat. No. 103 | File Name: 277-059.jpg

Dante Gabriel Rossetti, British (1828 - 1882)

Desdemona's Death-Song, c. 1879

chalks on two joined sheets of blue-green paper, 128 x 75 cm (50 3/8 x 29 1/2); frame size: 127 x 101.6 cm (50 x 40)

New Century Fund and Paul Mellon Fund, 2005



Cat. No. 104 | File Name: 277-127.jpg

Frederick Trap Friis, American (1865 - 1909)

Woman Floating in a River Attended by Several Female Spirits, c. 1895

charcoal with spattering, 48.1 x 62.6 cm (18 15/16 x 24 5/8)

Mary Hopkins Gibb Fund, 2007



Catalog No. / File Name (If image available) | Caption (dimensions listed in centimeters followed by inches)

Image

Cat. No. 105

Maurice Brazil Prendergast, American (1858 - 1924)

Central Park, c. 1901

monotype on Japanese paper with mica, image: 20 x 25.5 cm (7 7/8 x 10 1/16); sheet: 25.4 x 32.4 cm (10 x 12 3/4)

Anonymous Donor, 2006

Cat. No. 106 | File Name: 277-063.jpg

Anton von Werner, German (1843 - 1915)

The Artist's Wife and Daughters in a Park at Heringsdorf, 1877

watercolor over graphite heightened with white, 35.9 x 25.5 cm (14 1/8 x 10 1/16)

Alexander M. and Judith W. Laughlin, 2007



Cat. No. 107

Gwen John, British (1876 - 1939)

Portrait of a Lady, c. 1910

graphite and wash

Gift of Roy and Cecily Langdale Davis in honor of Stefanie Maison, 2005

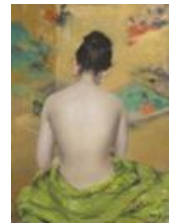
Cat. No. 108 | File Name: 277-061.jpg

William Merritt Chase, American (1849 - 1916)

Study of Flesh color and Gold, 1888

pastel, 45.7 x 33 cm (18 x 13)

Gift of Raymond J. and Margaret Horowitz, 2007



Cat. No. 109 | File Name: 277-124.jpg

Gwen John, British (1876 - 1939)

A Corner of the Artist's Room in Meudon, late 1910s

watercolor, gouache, and graphite, 24.5 x 22.2 cm (9 5/8 x 8 3/4)

Gift (Partial and Promised) of Mimi and Sanford Feld, 2005



Cat. No. 110

Jacques Villon, French (1875 - 1963)

La Parisienne, 1902

color etching and aquatint, touched with watercolor, plate: 47.2 x 37.5 cm (18 9/16 x 14 3/4);

sheet: 64.3 x 49.3 cm (25 5/16 x 19 7/16)

Pepita Milmore Memorial Fund and Patrons' Permanent Fund, 2007

Cat. No. 111

Jacques Villon, French (1875 - 1963)

La Parisienne, 1902/1903

color drypoint, etching, and aquatint, with blind embossing, touched with watercolor, plate:

45.2 x 33.9 cm (17 13/16 x 13 3/8); plate: 67 x 50.2 cm (26 3/8 x 19 3/4)

Pepita Milmore Memorial Fund and Patrons' Permanent Fund, 2007

Catalog No. / File Name (If image available) | Caption (dimensions listed in centimeters followed by inches)

Image

Cat. No. 112

Jacques Villon, French (1875 - 1963)

La Parisienne, 1903

color etching and aquatint with blind embossing, plate: 45.2 x 33.4 cm (17 13/16 x 13 1/8);
sheet: 52 x 40 cm (20 1/2 x 15 3/4)

Pepita Milmore Memorial Fund and Patrons' Permanent Fund, 2007

Cat. No. 113

Jacques Villon, French (1875 - 1963)

The Cigarette, 1900

pen and ink with watercolor over graphite, sheet: 49.8 x 38 cm (19 5/8 x 14 15/16)

Evelyn Stefansson Nef Fund, 2007

Cat. No. 114

Jacques Villon, French (1875 - 1963)

Gaby in a Chaise Longue, 1906

color drypoint and aquatint with monotype printing, touched with pastel, plate: 53.2 x 41.2 cm
(20 15/16 x 16 1/4); sheet: 65.1 x 50 cm (25 5/8 x 19 11/16)

Paul Mellon Fund, 2005

Cat. No. 115

Jacques Villon, French (1875 - 1963)

Gaby in a Chaise Longue, 1906

drypoint touched with pastel, plate: 54.4 x 42 cm (21 7/16 x 16 9/16); sheet: 64.3 x 49.1 cm (25
5/16 x 19 5/16)

Paul Mellon Fund, 2005

Cat. No. 116

Jacques Villon, French (1875 - 1963)

Gaby in a Chaise Longue, 1906

drypoint touched with pastel and spattering, plate: 53.2 x 41.2 cm (20 15/16 x 16 1/4); sheet:
60.8 x 45.7 cm (23 15/16 x 18)

Paul Mellon Fund, 2005

Cat. No. 117 | File Name: 277-060.jpg

Pierre Puvis de Chavannes, French (1824 - 1898)

A Violinist, c. 1870

chalk heightened with white on light green paper, 35.9 x 23.9 cm (14 1/8 x 9 7/16)

Joan and David Maxwell Fund, 2007



Cat. No. 118

Otto Greiner, German (1869 - 1916)

An Elegant Young Woman in Classical Drapery, c. 1895

chalk heightened with white and gold on green paper, 62.2 x 47.4 cm (24 1/2 x 18 11/16)

Gift of the Monica and Hermen Greenberg Foundation in Honor of Monica Lind Greenberg, 2007

Catalog No. / File Name (If image available) | Caption (dimensions listed in centimeters followed by inches)

Image

Cat. No. 119

Vicomte Ludovic Napoléon Lepic, French (1839 - 1889)

The Shore of the Escaut River with a Turbulent Sky, early 1870s

etching with monotype wiping [proof] on wove paper, plate: 34.4 x 61.5 cm (13 9/16 x 24 3/16);
sheet: 74 x 89.3 cm (29 1/8 x 35 3/16)

Gift of Ruth Cole Kainen, 2006

Cat. No. 120

Adolphe Appian, French (1818 - 1898)

The Port of Genoa, c. 1877

etching with monotype wiping, plate: 42.1 x 29.2 cm (16 9/16 x 11 1/2); sheet: 42.7 x 30.5 cm
(16 13/16 x 12)

Ailsa Mellon Bruce Fund, 2004

Cat. No. 121

Henri-Joseph Harpignies, French (1819 - 1916)

Evening Light on a Wooded Lakeside, 1882

watercolor over graphite, with touches of white heightening, 36.8 x 53.2 cm (14 1/2 x 20 15/16)

Andrea Woodner Fund, 2006

Cat. No. 122

Gustave Doré, French (1832 - 1883)

The Shades of French Soldiers from the Past Exhort the Army to Victory on the Rhine, c. 1870

brush and wash over chalk, heightened with white, 65.5 x 91 cm (25 13/16 x 35 13/16)

Helen Porter and James T. Dyke Fund, 2006

Cat. No. 123

Albert Lebourg, French (1849 - 1928)

Harbor in Dordrecht, c. 1896

pen and ink with wash, 22.5 x 28.4 cm (8 7/8 x 11 3/16)

Gift of Helen Porter and James T. Dyke, 2006

Cat. No. 124

Camille Pissarro, French (1830 - 1903)

Trees and Meadows at Eragny, 1895/1900

chalk, 30.8 x 47.5 cm (12 1/8 x 18 11/16)

Gift of Helen Porter and James T. Dyke, 2006

Cat. No. 125

Théo van Rysselberghe, Belgian (1862 - 1926)

Boulogne, 1900

color etching and aquatint, plate: 24.9 x 30.2 cm (9 13/16 x 11 7/8); sheet: 32.5 x 43.4 cm (12 13/16 x 17 1/16)

Fund Given in Memory of Mrs. Daryl Reich Rubenstein, 2006

Cat. No. 126

Maxime Lalanne, French (1827 - 1886)

Alpine Castle above a Wooded Lake, c. 1870

charcoal and chalk with stumping, heightened with white, on tan paper, 103 x 69 cm (40 9/16 x 27 3/16)

Helen Porter and James T. Dyke Fund, 2006

Catalog No. / File Name (If image available) | Caption (dimensions listed in centimeters followed by inches) Image

Cat. No. 127

Lovis Corinth, German (1858 - 1925)

Woodland Path, 1890s

pastel, 42.2 x 51.2 cm (16 5/8 x 20 3/16)

Anonymous Gift, 2005

Cat. No. 128

Félix-Hilaire Buhot, French (1847 - 1898)

Funeral Procession on the Boulevard de Clichy, 1887

color etching, drypoint, aquatint, roulette, and soft-ground etching, over heliogravure, hand-touched in watercolor and gold, plate: 30 x 39.7 cm (11 13/16 x 15 5/8)

Gift (Partial and Promised) Gift of Helena Gunnarsson, Buhot Collection, 2005

Cat. No. 129

Lucien Ott, French (1870 - 1927)

Wooded Landscape, c. 1905

pastel on blue paper, 41.6 x 46.2 cm (16 3/8 x 18 3/16)

Gift of Jean-Luc Baroni, Ltd., 2005

Cat. No. 130

Edgar Degas, French (1834 - 1917)

The Curtain, c. 1880

pastel over monotype, sheet: 29 x 33.3 cm (11 7/16 x 13 1/8)

Collection of Mr. and Mrs. Paul Mellon, 2006.

Cat. No. 131

Edvard Munch, Norwegian (1863 - 1944)

The Brooch: Eva Mudocci, 1903

lithograph, 76 x 58 cm (29 15/16 x 22 13/16)

Gift of the Epstein Family Collection, 2006

Cat. No. 132

Johan Barthold Jongkind, Dutch (1819 - 1891)

Countryside near Brezins, 1880s

chalk and watercolor, 15.2 x 47.5 cm (6 x 18 11/16)

Joan and David Maxwell Fund, 2006

Cat. No. 133

Johan Barthold Jongkind, Dutch (1819 - 1891)

A Village near Brezins, 1880s

, 15.2 x 47.5 cm (6 x 18 11/16)

Washington, Joan and David Maxwell Fund, 2006

Cat. No. 134

Paul Sandby, British (1731 - 1809)

Windsor Castle from the Lower Court, on the 5th of november, 1776

color etching and aquatint in Paul Sandby, "Views of Royal Castle of Windsor (Sandby, London, 1776), overall size, book open: 46 x 65 cm (18 1/8 x 25 9/16)

Paul Mellon Fund, 2004

Catalog No. / File Name (If image available) | Caption (dimensions listed in centimeters followed by inches)

Image

Cat. No. 135

Karl Gottfried Traugott Faber, German (1786 - 1863)

***A Country Road Near Dresden*, 1837**

graphite in Karl Gottfried Traugott Faber, "Sketchbook with Romantic Castles, Villages, Wooded Cliffs and Panoramas Around Dresden," 1837, sheet: 21 x 17 cm (8 1/4 x 6 11/16); book: 21.4 x 17.9 x 1.5 cm (8 7/16 x 7 1/16 x 9/16)

Ailsa Mellon Bruce Fund, 2005

Cat. No. 136

Jean-Jacques Grandville, Designer, French (1803 - 1847)

***[Frontispiece] and [Title] and "Le Caméléon"*, 1842**

wood engravings in J.J. Grandville and P.J. Stahl, "Scènes de la vie Privée et Publique des Animaux" (J. Hetzel et Paulin, Paris, 2 volumes, 1842), bk: cm (10 9/16 x 7 1/2 x 1 7/8)

William B. O'Neal Fund, 2006

Cat. No. 137

Albert Emil Kirchner, German (1813-1885)

***Hagenau*, 1877**

chalk with wash in Albert Emil Kirchner, "Sketchbook with Trees, Lakes, Castles and rustic Buildings in Southern Germany and Switzerland, 1876-1878

Ailsa Mellon Bruce Fund, 2004

Cat. No. 138

Félix-Hilaire Buhot, French (1847 - 1898)

***The Miller Quivering on One of the Blades of the Blue Mill*, 1879**

etching in J. Barbey-D'Aurevilly, "Le Chevalier Destouches" (Alphonse Lemerre, Paris, 1879)

Gift of Daniel Bell and Pearl K. Bell, 2006

Cat. No. 139

Aubrey Beardsley, Designer, British (1872 - 1898)

***"The Woman in the Moon" and [Title] and "The Climax"*, 1894**

lineblocks in Oscar Wilde and Aubrey Beardsley, "Salomé" (Elkin Matthews and John Lane, London, 1894), book: 21.7 x 15.7 x 1.6 cm (8 9/16 x 6 3/16 x 5/8); plate: 20.9 x 15.1 cm (8 1/4 x 5 15/16)

William B. O'Neal Fund, 2007

Cat. No. 140

Friedrich Wilhelm Schwechten, German (1796 - 1879)

***Der durchbrochene Thurm von der Schlosstreppe aus gesehen (The Pierced Tower Seen from the Castle Staircase)*, 1823-1826**

color etching and aquatint in F. Schwechten "Der Dom zu Meissen" (Ludwig Wilhelm Wittich, 3 original parts, 1823-1826), plate: 44.7 x 33.2 cm (17 5/8 x 13 1/16); sheet: 62.7 x 46.5 cm (24 11/16 x 18 5/16)

William B. O'Neal Fund, 2004

Cat. No. 141 | File Name: 277-168.jpg

Gustave Doré, Designer, French (1832 - 1883)

***Father Thames [Frontispiece] and "A River Side Street"*, 1872**

wood engravings in Gustave Doré and Blanchard Jerrold, "London. A Pilgrimage" (Grant & Co., London, 1872)

William B. O'Neal Fund, 2007



Catalog No. / File Name (If image available) | Caption (dimensions listed in centimeters followed by inches)

Image

Cat. No. 142

Erich Heckel, German (1883 - 1970)

***Tired*, 1913**

woodcut, block: 45.8 x 23.5 cm (18 1/16 x 9 1/4); sheet: 61.8 x 50.8 cm (24 5/16 x 20)

Given in Memory of Mrs. Daryl Reich Rubenstein, 2007

Cat. No. 143

Walter Gramatté, German (1897 - 1929)

***Das leere Café [The Empty Café]*, 1917**

graphite with touches of stumping, 34.1 x 26.2 cm (13 7/16 x 10 5/16)

Merritt Porter Dyke Fund, 2007

Cat. No. 144

Walter Gramatté, German (1897 - 1929)

***Das leere Café [The Empty Café]*, 1918**

pen and ink with crayons, 33.9 x 26.2 cm (13 3/8 x 10 5/16)

Merritt Porter Dyke Fund, 2007

Cat. No. 145 | File Name: 277-139.jpg

Kurt Schwitters, German (1887 - 1948)

***Merz 3 (Title Page)*, 1923**

lithograph with collage on red and pink papers (artist's proof), 56 x 44.5 cm (22 1/16 x 17 1/2)

Patrons' Permanent Fund, 2006



Cat. No. 146 | File Name: 277-145.jpg

Kurt Schwitters, German (1887 - 1948)

***Merz 3 (0/6)*, 1923**

lithograph with collage (artist's proof), 56 x 44.5 cm (22 1/16 x 17 1/2)

Patrons' Permanent Fund, 2006



Cat. No. 147 | File Name: 277-144.jpg

Kurt Schwitters, German (1887 - 1948)

***Merz 3 (0/5)*, 1923**

color lithograph with collage (artist's proof), 56 x 44.5 cm (22 1/16 x 17 1/2)

Patrons' Permanent Fund, 2006



Cat. No. 148 | File Name: 277-143.jpg

Kurt Schwitters, German (1887 - 1948)

***Merz 3 (0/4)*, 1923**

color lithograph with collage (artist's proof), 56 x 44.5 cm (22 1/16 x 17 1/2)

Patrons' Permanent Fund, 2006



Catalog No. / File Name (If image available) | Caption (dimensions listed in centimeters followed by inches)

Image

Cat. No. 149 | File Name: 277-142.jpg
Kurt Schwitters, German (1887 - 1948)
Merz 3 (0/3), 1923
lithograph with collage (artist's proof), 56 x 44.5 cm (22 1/16 x 17 1/2)
Patrons' Permanent Fund, 2006



Cat. No. 150 | File Name: 277-141.jpg
Kurt Schwitters, German (1887 - 1948)
Merz 3 (0/2), 1923
color lithograph with collage (artist's proof), 56 x 44.5 cm (22 1/16 x 17 1/2)
Patrons' Permanent Fund, 2006



Cat. No. 151 | File Name: 277-140.jpg
Kurt Schwitters, German (1887 - 1948)
Merz 3 (0/1), 1923
color lithograph with collage (artist's proof), 56 x 44.5 cm (22 1/16 x 17 1/2)
National Gallery of Art, Washington, Patrons' Permanent Fund, 2006.52.3



Cat. No. 152 | File Name: 277-138.jpg
Kurt Schwitters, German (1887 - 1948)
Merz 3 (Cover), 1923
lithograph with collage on grey-blu paper (artist's proof), 56 x 44.5 cm (22 1/16 x 17 1/2)
Patrons' Permanent Fund, 2006



Cat. No. 153 | File Name: 277-146.jpg
Sonia Delaunay-Terk, French (1885 - 1979)
Solar Prism, 1914
collage with brush and ink, watercolor, crayons, chalk, and essence, 49.5 x 33 cm (19 1/2 x 13)
Gift of The Judith Rothschild Foundation



Cat. No. 154 | File Name: 277-147.jpg
(1887-1970)
Mental Reactions, 1915
brush and ink with collage of cut-and-pasted texts, over graphite, 72.6 x 57.2 cm (28 9/16 x 22 1/2)
Gift of Helen Porter and James T. Dyke, 2007



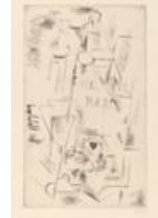
Catalog No. / File Name (If image available) | Caption (dimensions listed in centimeters followed by inches)

Image

Cat. No. 155 | File Name: 277-148.jpg
Jacques Villon, French (1875 - 1963)
Yvonne D. from the Front, 1913
drypoint, 54.9 x 41 cm (21 5/8 x 16 1/8)
Gift of The Judith Rothschild Foundation



Cat. No. 156 | File Name: 277-149.jpg
Pablo Picasso, Spanish (1881 - 1973)
Still Life with a Bottle of Marc, 1911
drypoint, plate: 49.8 x 30.5 cm (19 5/8 x 12); sheet: 72.2 x 55.2 cm (28 7/16 x 21 3/4)
New Century Fund, 2006



Cat. No. 157
George Grosz, German (1893 - 1959)
Self-Portrait (for Charlie Chaplin), 1919
lithograph, sheet: 74 x 55 cm (29 1/8 x 21 5/8)
Ailsa Mellon Bruce Fund, 2007

Cat. No. 158
Paul Klee, Swiss (1879 - 1940)
Rote Säulen vorbeziehend [Passing Red Columns], 1928
palette knife with color gesso, watercolor, stamped gouache, and casein, image, approximate,
measured through frame: 24 x 32.3 cm (9 7/16 x 12 11/16)
Collection of Mr. and Mrs. Paul Mellon, 2006

Cat. No. 159
Henri Matisse, French (1869 - 1954)
Nude, 1906
lithograph, 50.5 x 38.6 cm (19 7/8 x 15 3/16)
Gift of Ruth Cole Kainen, 2006

Cat. No. 160
Erich Heckel, German (1883 - 1970)
Standing Nude, 1911
woodcut with watercolor
Gift of Ruth Cole Kainen, 2006

Cat. No. 161
Erich Heckel, German (1883 - 1970)
In the Meadow, 1912
color lithograph, sheet: 36.5 x 48.9 cm (14 3/8 x 19 1/4)
Gift of Ruth Cole Kainen, 2006

Cat. No. 162 | File Name: 277-154.jpg
Emil Nolde, German (1867 - 1956)
Stormy Sea, c. 1930
watercolor on japan paper, 33.3 x 47 cm (13 1/8 x 18 1/2)
Patrons' Permanent Fund, 2006



Catalog No. / File Name (If image available) | Caption (dimensions listed in centimeters followed by inches)

Image

Cat. No. 163

Otto Dix, German (1891 - 1969)

Standing Nude, 1920s

graphite with stumping, 66.4 x 37.8 cm (26 1/8 x 14 7/8)

Joan and David Maxwell Fund, 2005

Cat. No. 164

Otto Dix, German (1891 - 1969)

Nächtliche Erscheinung (Nighttime Apparition), 1923

lithograph, image: 47.8 x 26.9 cm (18 13/16 x 10 9/16); sheet: 64.5 x 50.2 cm (25 3/8 x 19 3/4)

Purchased as the Gift of alan and Marianne Schwartz, 2007.13.1

Cat. No. 165

Edvard Munch, Norwegian (1863 - 1944)

The Kiss in the Field, 1943

color woodcut with watercolor, block: 40.4 x 49 cm (15 7/8 x 19 5/16); 53.8 x 64.1 cm (21 3/16 x 25 1/4)

Gift of Ruth Cole Kainen, 2007.75.1

Cat. No. 166 | File Name: 277-171.jpg

Solomon Telingater, Russian (1903 - 1969)

All-Soviet Military Railroad, 1930

collage of photomechanical reproductions with brush and ink and gouache over graphite on gray-green paper, 24.4 x 31.3 cm (9 5/8 x 12 5/16)

Patrons' Permanent Fund, 2005



Cat. No. 167 | File Name: 277-172.jpg

Elena Semenova, Russian (1898 - 1986)

Exhibition Kiosk with Projection Screen, 1928

pen and ink with gouache over graphite, touched with varnish, 27.6 x 18.7 cm (10 7/8 x 7 3/8)

Patrons' Permanent Fund, 2005



Cat. No. 168 | File Name: 277-173.jpg

Elena Semenova, Russian (1898 - 1986)

Exhibition Display Unit, 1928

pen and ink with gouache and silver paint over graphite, 17.5 x 21.4 cm (6 7/8 x 8 7/16)

Patrons' Permanent Fund, 2005



Cat. No. 169 | File Name: 277-174.jpg

Solomon Telingater, Russian (1903 - 1969)

Central Theater of the Red Army: First Cavalry, 1930

collage of photomechanical reproductions with brush and ink and gouache over graphite on gray-green paper, 31.8 x 25.2 cm (12 1/2 x 9 15/16)

Patrons' Permanent Fund, 2005



Catalog No. / File Name (If image available) | Caption (dimensions listed in centimeters followed by inches)

Image

Cat. No. 170 | File Name: 277-175.jpg
Gustav Klutsis, Russian (1895 - 1938)
Propaganda Stand (Workers of the World Unite), 1922
gouache over graphite, 21.1 x 29.9 cm (8 5/16 x 11 3/4)
Patrons' Permanent Fund, 2005



Cat. No. 171 | File Name: 277-176.jpg
Gustav Klutsis, Russian (1895 - 1938)
Agit-Prop Stand, 1922
color lithograph, 23.8 x 14.8 cm (9 3/8 x 5 13/16)
Patrons' Permanent Fund, 2005



Cat. No. 172 | File Name: 277-194.jpg
Gustav Klutsis, Russian (1895 - 1938)
The Female Worker in England, 1929/1930
collage of photomechanical reproductions over graphite on paper prepared with gouache and varnish, 21.3 x 28.1 cm (8 3/8 x 11 1/16)
Patrons' Permanent Fund, 2005



Cat. No. 173
Pablo Picasso, Spanish (1881 - 1973)
Composition, 1948
lithograph, image: 64.2 x 49.7 cm (25 1/4 x 19 9/16); sheet: 66 x 50.5 cm (26 x 19 7/8)
Gift of Ruth Cole Kainen, 2006

Cat. No. 174
Max Ernst, German (1891 - 1976)
Conjugal Diamonds, 1925
graphite frottage, 25.4 x 17 cm (10 x 6 11/16)
Gift of Helen Porter and James T. Dyke, 2006

Cat. No. 175 | File Name: 277-179.jpg
Kurt Seligmann, American (1900 - 1962)
Unconcerned, Ulysses Listens to the Siren's Song, 1943
graphite with watercolor, 66.2 x 99.3 cm (26 1/16 x 39 1/8)
Helen Porter and James T. Dyke Fund, 2005



Cat. No. 176
John Marin, American (1870 - 1953)
Woolworth Building, No. 2, 1913
etching, plate: 32.3 x 26.1 cm (12 11/16 x 10 1/4); sheet: 40.8 x 34.2 cm (16 1/16 x 13 7/16);
mount: 50.6 x 42.1 cm (19 15/16 x 16 9/16)
Gift of Norma B. Marin, 2005

Catalog No. / File Name (If image available) | Caption (dimensions listed in centimeters followed by inches)

Image

Cat. No. 177

John Steuart Curry, American (1897 - 1946)

***Stallion and Jack Fighting*, 1942/1943**

conté crayon with graphite and pen and ink, heightened with white, over red chalk on tracing paper, sheet: 38.1 x 45.6 cm (15 x 17 15/16)

Gift of the Hermen and Monica Greenberg Foundation in honor of Monica Lind Greenberg, 2004

Cat. No. 178

Pablo Picasso, Spanish (1881 - 1973)

***Bust, Modern Style*, 1949**

lithograph, plate: 64.2 x 49.5 cm (25 1/4 x 19 1/2); sheet: 65.5 x 49.7 cm (25 13/16 x 19 9/16)

Gift of Ruth Cole Kainen, 2006

Cat. No. 179 | File Name: 277-183.jpg

Stuart Davis, American (1894 - 1964)

***Barber Shop Chord*, 1931**

lithograph, image: 35.3 x 48.4 cm (13 7/8 x 19 1/16); sheet: 45.2 x 55.8 cm (17 13/16 x 21 15/16)

Gift of Ruth Cole Kainen, 2005



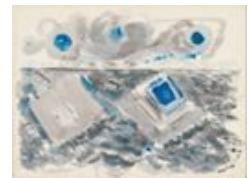
Cat. No. 180 | File Name: 277-185.jpg

John Marin, American (1870 - 1953)

***Cape Split, Sea*, 1945**

watercolor over graphite, 39.4 x 53.7 cm (15 1/2 x 21 1/8)

Gift of Norma B. Marin, 2005



Cat. No. 181 | File Name: 277-178.jpg

Adolph Gottlieb, American (1903 - 1974)

***Pictograph*, 1946/1947**

watercolor heightened with white and gold, 46.2 x 61.1 cm (18 3/16 x 24 1/16)

Gift of Ruth Cole Kainen, 2006



Cat. No. 182 | File Name: 277-186.jpg

Philip Guston, American (1913 - 1980)

***Summer*, 1953**

quill pen and ink on brown paper, 45 x 58.2 cm (17 11/16 x 22 15/16)

Gift of Edward R. Broida, 2005



Cat. No. 183

David Smith, American (1906 - 1965)

***A Letter*, 1952**

lithograph, 50.9 x 66 cm (20 1/16 x 26)

Gift of Ruth Cole Kainen, 2006

Cat. No. 184

Paul Klee, Swiss (1879 - 1940)

***Rechts unfreundlich (Downright Unfriendly)*, 1940**

brush and dry pigment mixed with paste

Gift of The Judith Rothschild Foundation, 2007

Catalog No. / File Name (If image available) | Caption (dimensions listed in centimeters followed by inches)

Image

Cat. No. 185

Franz Kline, American (1910 - 1962)

[Untitled], 1947

brush and black ink, 43.3 x 67 cm (17 1/16 x 26 3/8)

Gift of Edward R. Broida, 2005

Cat. No. 185

Franz Kline, American (1910 - 1962)

[Untitled], 1947

brush and black ink, 43.3 x 67 cm (17 1/16 x 26 3/8)

Gift of Edward R. Broida, 2005

Cat. No. 186

Carl André, American (born 1935)

Four Bent Pipe Run, 1969

pen and black ink on graph paper, 21.1 x 28 cm (8 5/16 x 11)

Dorothy and Herbert Vogel Collection, 2007

Cat. No. 187

Carl Andre, American (born 1935)

17 Steel Rod Run, 1969

pen and ink on graph paper, 21.1 x 28 cm (8 5/16 x 11)

Dorothy and Herbert Vogel Collection, 2007

Cat. No. 188

Richard Tuttle, American (born 1941)

Summer "Collage" Drawings, 1977

graphite ; watercolor over graphite; pen and ink with watercolor over graphite, 35.5 x 28 cm (14 x 11)

Dorothy and Herbert Vogel Collection, 2007

Cat. No. 189

Howardena Pindell, American (born 1943)

[untitled] #20, 1974

collage with punched paper, pen and black ink, monofilament, and powder, sheet: 30.5 x 24.5 cm (12 x 9 5/8); 30.5 x 24.5 cm (12 x 9 5/8)

Dorothy and Herbert Vogel Collection, 2007

Cat. No. 190

Robert Morris, American (born 1931)

Blind Time I, 1973

powdered graphite with plate oil and graphite inscription, 88.9 x 116.8 cm (35 x 46)

Gift of the Collectors Committee, 2004

Cat. No. 191

Roy Lichtenstein, American (1923 - 1997)

Study for center panel of "Cow Triptych (Cow Going Abstract)", 1974

graphite with colored pencils, sheet: 51.8 x 60 cm (20 3/8 x 23 5/8)

Gift of Dorothy Lichtenstein in memory of Jane B. Meyerhoff, 2005

Catalog No. / File Name (If image available) | Caption (dimensions listed in centimeters followed by inches) Image

Cat. No. 192

Chuck Close, American (born 1940)

***Lorna*, 2002**

photogravure, sheet: 120.7 x 102.9 cm (47 1/2 x 40 1/2); plate: 100 x 87 cm (39 3/8 x 34 1/4)

Gift of Graphicstudio/University of South Florida, 2007

Cat. No. 193

Sean Scully, American (born 1945)

***Mexico MELAQUE*, 1983**

watercolor over graphite, 29.2 x 22.9 cm (11 1/2 x 9)

National Gallery of Art, Washington, Gift of Jane Watkins, 2006.137.3

Cat. No. 194

Sean Scully, American (born 1945)

***Mexico HUA HUA*, 1983**

watercolor over graphite, 29.2 x 22.9 cm (11 1/2 x 9)

Gift of Jane Watkins, 2006

Cat. No. 195

Sean Scully, American (born 1945)

***[untitled]*, 1984**

watercolor over graphite, 22.9 x 29.2 cm (9 x 11 1/2)

Gift of Jane Watkins, 2006

Cat. No. 196

Kiki Smith, American (born Germany, 1954)

***[untitled]*, 1990**

lithograph on japan paper, 90.8 x 91.5 cm (35 3/4 x 36)

Gift of the Collectors Committee, 2007

Cat. No. 197

Martin Puryear, American (born 1941)

***Profile*, 2002**

softground etching with drypoint on chine collé, plate: 60.5 x 45.3 cm (23 13/16 x 17 13/16);

sheet: 88.5 x 70.9 cm (34 13/16 x 27 15/16)

Gift of Bridgewater Associates, 2006

Cat. No. 198

Ed Ruscha, American (born 1937)

***The End #68*, 2006**

acrylic and ink, image: 41 x 64.7 cm (16 1/8 x 25 1/2)

Gift of the Collectors Committee and Irwin and Ginny Edlavitch, 2007

Cat. No. 199

Philip Guston, American (1913 - 1980)

***Rain*, 1975**

pen and ink, 48.4 x 61 cm (19 1/16 x 24)

Gift of Edward R. Broida, 2005

Catalog No. / File Name (If image available) | Caption (dimensions listed in centimeters followed by inches)

Image

Cat. No. 200

Vija Celmins, American (born Latvia, 1938)

Airplane Disaster, 1968

graphite on prepared paper, image: 32.2 x 44.9 cm (12 11/16 x 17 11/16); sheet: 35.2 x 46.9 cm (13 7/8 x 18 7/16)

Gift of Edward R. Broida, 2005

Cat. No. 201

Fred Wilson, American (born 1954)

Exchange, 2004

color aquatint, spitbite aquatint and direct gravure, plate: 50.5 x 60.7 cm (19 7/8 x 23 7/8); sheet: 77.5 x 86.5 cm (30 1/2 x 34 1/16)

Gift of Kathan Brown, 2006

Cat. No. 202

Jasper Johns, American (born 1930)

Target with Four Faces, 1968

color photoscreen print with added chalk, ink, and collage, sheet: 105.1 x 74.9 cm (41 3/8 x 29 1/2)

Patrons' Permanent Fund, 2004

Cat. No. 203

Jasper Johns, American (born 1930)

Figure 5, 1969

color lithograph with added gouache, sheet: 96.5 x 78.4 cm (38 x 30 7/8)

Patrons' Permanent Fund, 2005

Cat. No. 204

Jasper Johns, American (born 1930)

Figure 5, 1969

color lithograph with added crayon, sheet: 94.3 x 76.2 cm (37 1/8 x 30)

Patrons' Permanent Fund, 2005

Cat. No. 205

Jasper Johns, American (born 1930)

[untitled], 1969

photogravure with aquatint and etching, plate: 73.8 x 50.5 cm (29 1/16 x 19 7/8); sheet: 92 x 61.5 cm (36 1/4 x 24 3/16)

Gift of Nelson Blitz, Jr. and Catherine Woodard in honor of Perri and Allison Blitz, 2007

Cat. No. 206

Louise Bourgeois, American (born 1911)

[untitled], 1994

aquatint with drypoint and added paint, plate: 80.5 x 60 cm (31 11/16 x 23 5/8); sheet: 93.4 x 71.7 cm (36 3/4 x 28 1/4)

Gift of Carolyn Kaplan, 2007

Cat. No. 207

Saul Steinberg, American (1914 - 1999)

Two Women, 1993

etching, plate: 22.5 x 30 cm (8 7/8 x 11 13/16); sheet: 53.5 x 51 cm (21 1/16 x 20 1/16)

Gift of Lee and Ann Fensterstock, 2006

Catalog No. / File Name (If image available) | Caption (dimensions listed in centimeters followed by inches) Image

Cat. No. 208

Robert Morris, American (born 1931)

Blind Time IV (Drawing with Davidson), 1991

powdered iron oxide with plate oil and graphite inscription, sheet: 96.5 x 127 cm (38 x 50);

framed: 107 x 137.2 x 5.1 cm (42 1/8 x 54 x 2)

Gift of Patricia Alper Cohn and David I. Cohn, Werner H. and Sarah-Ann Kramarsky, Aaron I.

Fleischman, Suzanne Cohen, and the Collectors Committee, 2005

Cat. No. 209

Guerrilla Girls, American (founded 1985)

Guerrilla Girls' Most Wanted: 1985-2006, 2006

portfolio of thirty-two posters in various media, closed: 47 x 75.5 x 2.8 cm (18 1/2 x 29 3/4 x 1

1/8)

Gift of the Gallery Girls in support of the Guerrilla Girls, 2007
