

Private Treasures: Four Centuries of European Master Drawings

May 6, 2007 - September 16, 2007

Important: The images displayed on this page are for reference only and are not to be reproduced in any media. To obtain images and permissions for print or digital reproduction please provide your name, press affiliation and all other information as required(*) utilizing the order form at the end of this page.

Digital images will be sent via e-mail.

Please include a brief description of the kind of press coverage planned and your phone number so that we may contact you.

Usage: Images are provided exclusively to the press, and only for purposes of publicity for the duration of the exhibition at the National Gallery of Art. All published images must be accompanied by the credit line provided and with copyright information, as noted.

Catalog No. / File Name (If image available) | Caption (dimensions listed in centimeters followed by inches)

Image

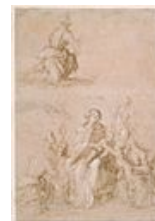
Cat. No. 1 | File Name: 225-091.jpg

Fra Bartolommeo (1472 - 1517)

The Virgin and Child Surrounded by Saints and Angels, c. 1500

pen and brown ink over metalpoint, heightened with white, on pink prepared paper, sheet: 22.3 x 15.3 cm (8 3/4 x 6); framed: 45.7 x 38.1 cm (18 x 15)

National Gallery of Art, Washington, Gift of the Private Collector, 2003.119.1.a



Cat. No. 1v | File Name: 225-092.jpg

Fra Bartolommeo (1472 - 1517)

A Kneeling Angel and a Standing Man, c. 1500

pen and brown ink over metalpoint, heightened with white on gray-blue prepared paper, 22.3 x 15.3 cm (8 3/4 x 6)

National Gallery of Art, Washington, Gift of the Private Collector, 2003.119.1.a



Cat. No. 2 | File Name: 225-007.jpg

Fra Bartolommeo (1472 - 1517)

A Fortified Hill Town, 1500/1510

pen and brown ink, 20.5 x 27.9 cm (8 1/16 x 11); framed: 38.1 x 45.1 cm (15 x 17 3/4)

Private Collection



Catalog No. / File Name (If image available) | Caption (dimensions listed in centimeters followed by inches)

Image

Cat. No. 3 | File Name: 225-098.jpg
Domenico Campagnola (before 1500 - 1564)
Landscape with a Fortified Town and Rising Sun, 1517/1518
pen and brown ink, 35.3 x 23.3 cm (14 x 9 1/4)
Private Collection



Cat. No. 4 | File Name: 225-002.jpg
Baccio Bandinelli (1488/1493 - 1560)
The Pietà, 1520s
pen and brown ink, 25 x 31.7 cm (9 13/16 x 12 1/2); framed: 51.4 x 59.7 cm (20 1/4 x 23 1/2)
Private Collection



Cat. No. 5 | File Name: 225-003.jpg
Baccio Bandinelli (1488/1493 - 1560)
The Descent from the Cross, c. 1528/1529
pen and brown ink over black chalk, 38.3 x 28.1 cm (15 1/8 x 11 1/16); framed: 62.2 x 50.8 cm (24 1/2 x 20)
Private Collection



Cat. No. 6 | File Name: 225-014.jpg
Correggio (1489/1494 - 1534)
Two Apostles with Putti on Clouds; verso, A Putto Resting on a Cloud and a Sketch of a Leg, 1520/1522
red chalk; verso, black chalk (putto) and red chalk, partially squared in red chalk, 17.5 x 17.2 cm (6 7/8 x 6 3/4); framed: 43.2 x 47 cm (17 x 18 1/2)
Private Collection



Cat. No. 7 | File Name: 225-036.jpg
Biagio Pupini (active 1511 - mentioned 1575)
The Resurrection of Christ, 1525/1529
pen and brown ink with brown and gray wash over traces of black chalk, heightened with white, 19.8 x 30 cm (7 13/16 x 11 13/16); framed: 38.7 x 48.3 cm (15 1/4 x 19)
Private Collection



Cat. No. 8 | File Name: 225-031.jpg
Parmigianino (1503 - 1540)
Nude Man Standing beside a Pedestal, 1530/1540
pen and brown ink with brown wash over traces of black chalk, 17.8 x 13.7 cm (7 x 5 3/8); framed: 29.9 x 35.6 cm (11 3/4 x 14)
Private Collection



Catalog No. / File Name (If image available) | Caption (dimensions listed in centimeters followed by inches)

Image

Cat. No. 9 | File Name: 225-032.jpg

Perino del Vaga (1501 - 1547)

An Altarpiece with the Assumption of the Virgin, 1534

pen and brown ink, 24 x 15.4 cm (9 3/8 x 6 1/16); framed: 35.6 x 27.9 cm (14 x 11)

Private Collection



Cat. No. 10 | File Name: 225-010.jpg

Agnolo Bronzino (1503 - 1572)

The Dead Christ, 1529/1535

black chalk, with later framing lines in pen and brown ink; verso squared in black chalk, 31.4 x 22 cm (12 3/8 x 8 5/8); framed: 71.1 x 59.7 cm (28 x 23 1/2)

Private Collection



Cat. No. 11 | File Name: 225-041.jpg

Sodoma (1477 - 1549)

Head of a Man, 1513/1540

black chalk, 23 x 15.8 cm (9 1/16 x 6 3/16); framed: 39.4 x 52.1 cm (15 1/2 x 20 1/2)

Private Collection



Cat. No. 12 | File Name: 225-027.jpg

Lorenzo Lotto (c. 1480 - 1556/1557)

The Body of Christ Being Carried to the Sepulchre; verso, Scenes from a Last Judgment (Verso: Scenes from the Last Judgment), c. 1550

pen and brown ink and gray wash over black chalk, heightened with white, with later addition of green-brown wash, on blue paper; verso: pen and brown ink over traces of black chalk, 25.7 x 36 cm (10 1/8 x 14 3/16); framed: 61.6 x 52.1 cm (24 1/4 x 20 1/2)

Private Collection



Cat. No. 13 | File Name: 225-018.jpg

Battista Franco (probably 1498 - 1561)

An Allegory of Time, probably c. 1560/1561

pen and brown ink incised with stylus, 26.6 x 16.9 cm (10 1/2 x 6 5/8); framed: 43.8 x 33 cm (17 1/4 x 13)

Private Collection



Catalog No. / File Name (If image available) | Caption (dimensions listed in centimeters followed by inches)

Image

Cat. No. 14 | File Name: 225-047.jpg

Giorgio Vasari (1511 - 1574)

The Dispute of Saint Catherine with Emperor Maxentius, 1547/1551

pen and brown ink with light brown wash over black chalk, arched: 20 x 10.8 cm (7 7/8 x 4 1/4);
framed: 36.2 x 30.5 cm (14 1/4 x 12)

Private Collection



Cat. No. 15 | File Name: 225-046.jpg

Giorgio Vasari (1511 - 1574)

The Virgin and Child with Saints Catherine, Onofrio, Jerome, and Ivo, 1568

pen and brown ink with brown wash over black chalk, 21.3 x 16.9 cm (8 3/8 x 6 5/8); framed:
45.7 x 40.6 cm (18 x 16)

Private Collection



Cat. No. 16 | File Name: 225-030.jpg

Giovanni Battista Naldini (1537 - 1591)

Episodes from the Life of Joseph; verso, Male Nude Carried or Supported by a Second Figure, 1564/1580

pen and brown ink with brown wash over black chalk; verso, black chalk, 22.5 x 32 cm (8 7/8 x
12 5/8); framed: 44.5 x 55.9 cm (17 1/2 x 22)

Private Collection



Cat. No. 17 | File Name: 225-001.jpg

Niccolo Dell'Abate (c. 1512 - 1571)

Noli me tangere (Christ and the Magdalen), 1567/1571

pen and brown ink with brown wash over black chalk, heightened with white, 24.2 x 20 cm (9
1/2 x 7 7/8); framed: 47 x 43.2 cm (18 1/2 x 17)

Private Collection



Cat. No. 18 | File Name: 225-054.jpg

Etienne Delaune (c. 1519 - 1583)

The Triumph of Galatea, 1560/1570

pen and black ink with gray-brown wash on vellum, with border lines by the artist in pen and
black ink, 8.9 x 26.7 cm (3 1/2 x 10 1/2); 6.3 x 25.6 cm (2 1/2 x 10 1/8); framed: 31.1 x 48.6
cm (12 1/4 x 19 1/8)

Private Collection



Cat. No. 19 | File Name: 225-009.jpg

Bertoia (1544 - 1573/1574)

The Palazzo Salviati and Other Houses on the Banks of the Tiber, 1568/1573

pen and brown ink with brown wash over black chalk, with later framing lines in pen and brown
ink, 22.3 x 41.1 cm (8 3/4 x 16 3/16); framed: 61 x 41.9 cm (24 x 16 1/2)

Private Collection



Catalog No. / File Name (If image available) | Caption (dimensions listed in centimeters followed by inches)

Image

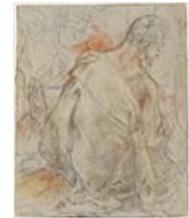
Cat. No. 20 | File Name: 225-096.jpg
Federico Barocci (probably 1535 - 1612)
Madonna Reading, with the Christ Child on her Lap; verso, Torso of a Bearded Man, 1568/1580
black and red chalk with pink, light blue, yellow, orange, and brown-red pastel on blue-gray paper; verso, black chalk with pink, red, and brown pastel, 42.6 x 32 cm (16 13/16 x 12 5/8); framed: 64.1 x 53.3 cm (25 1/4 x 21)
Private Collection



Cat. No. 21 | File Name: 225-004.jpg
Federico Barocci (probably 1535 - 1612)
Head of Saint Francis, 1574/1576
red, black, and white chalk and touches of pink and brown pastel and stumping on gray-blue paper, 21.3 x 27.3 cm (8 3/8 x 10 3/4); framed: 48.3 x 54 cm (19 x 21 1/4)
Private Collection



Cat. No. 22 | File Name: 225-097.jpg
Federico Barocci (probably 1535 - 1612)
Seated Apostle Seen from the Back; verso, Saint Jerome and a Study of His Right Arm, 1590/1599
black and red chalk and colored chalks on gray-brown paper; verso, black chalk, 25.6 x 21 cm (10 1/8 x 8 1/4)
Private Collection



Cat. No. 23 | File Name: 225-039.jpg
Santi di Tito (1536 - 1603)
The Adoration of the Shepherds (recto and verso), 1580s
pen and brown ink with brown wash, heightened with white, on blue paper; verso, pen and brown ink with brown wash over black chalk and stylus indications, squared in brown ink, 19.6 x 16.1 cm (7 3/4 x 6 5/16); framed: 34.9 x 38.7 cm (13 3/4 x 15 1/4)
Private Collection



Cat. No. 24 | File Name: 225-045.jpg
Francesco Vanni (1563 - 1610)
Three Figures, 1600
red chalk, 20.5 x 27.6 cm (8 1/16 x 10 7/8); framed: 35.6 x 43.2 cm (14 x 17)
Private Collection



Cat. No. 25 | File Name: 225-011.jpg
Agostino Carracci (1557 - 1602)
Trees; verso, A Tree with a Hilltown in the Distance, c. 1590
pen and brown ink, 18.8 x 14.4 cm (7 7/16 x 5 11/16); framed: 36.8 x 31.8 cm (14 1/2 x 12 1/2)
Private Collection



Catalog No. / File Name (If image available) | Caption (dimensions listed in centimeters followed by inches)

Image

Cat. No. 26 | File Name: 225-095.jpg

Bartolomeo Cesi (1556 - 1629)

A Striding Youth Carrying a Bundle of Sticks; verso, A Veiled Woman Praying, 1591/1594

red and white chalk on blue paper; verso, red chalk, 34 x 22 cm (13 3/8 x 8 5/8); framed: 62.2 x 48.3 cm (24 1/2 x 19)

Private Collection



Cat. No. 27 | File Name: 225-016.jpg

Francesco Curia (c. 1538 - 1610)

Studies of Figures and Putti; verso, Studies for an Annunciation, 1596/1602

pen and brown ink with mauve wash; verso, pen and black ink, 27.9 x 20.7 cm (11 x 8 3/16); framed: 49.5 x 41.3 cm (19 1/2 x 16 1/4)

Private Collection



Cat. No. 28 | File Name: 225-073.jpg

Jan Bruegel the Elder (1568 - 1625)

Windmill, 1605/1615

pen and brown ink with touches of brown wash over traces of graphite, with later framing lines in pen and brown ink, 14.5 x 15.5 cm (5 3/4 x 6 1/8); framed: 29.2 x 30.5 cm (11 1/2 x 12)

Private Collection



Cat. No. 29 | File Name: 225-040.jpg

Sinibaldo Scorza (1589 - 1631)

Orpheus and the Animals, 1620/1621

pen and black ink with brown wash, 40 x 56.2 cm (15 3/4 x 22 1/8); framed: 61 x 76.2 cm (24 x 30)

Private Collection



Cat. No. 30 | File Name: 225-025.jpg

Guercino (1591 - 1666)

Beggar Holding a Rosary and a Cap, c. 1620

oiled black chalk heightened with white on brown paper, 38.5 x 26.3 cm (15 1/8 x 10 3/8); framed: 66.7 x 55.9 cm (26 1/4 x 22)

Private Collection



Cat. No. 31 | File Name: 225-026.jpg

Guercino (1591 - 1666)

The Triumph of Galatea, 1620s

pen and brown ink with brown wash, squared in black chalk, with later framing lines in pen and brown ink, 20.6 x 26.1 cm (8 1/8 x 10 5/16); framed: 40.6 x 50.2 cm (16 x 19 3/4)

Private Collection



Catalog No. / File Name (If image available) | Caption (dimensions listed in centimeters followed by inches)

Image

Cat. No. 32 | File Name: 225-008.jpg

Gian Lorenzo Bernini (1598 - 1680)

Portrait of an Elderly Man with Mustache and Small Pointed Beard, probably 1630s or 1640s
black, red, and white chalk, 20.7 x 14.4 cm (8 1/8 x 5 5/8); framed: 44.5 x 38.1 cm (17 1/2 x 15)

Private Collection



Cat. No. 33 | File Name: 225-012.jpg

Giovanni Benedetto Castiglione (1609 or before - 1664)

Tobit Burying the Dead, c. 1640

brush and thinned oils with pen and brown ink, 41.5 x 28.8 cm (16 5/16 x 11 3/8); framed: 62.2 x 50.8 cm (24 1/2 x 20)

Private Collection



Cat. No. 34 | File Name: 225-037.jpg

Salvator Rosa (1615 - 1673)

Seated Man Gesturing toward a Tree, 1650s

pen and brown ink and brown wash with red chalk over traces of black chalk, oval: 42.5 x 33.6 cm (16 3/4 x 13 1/4); framed: 66 x 57.2 cm (26 x 22 1/2)

Private Collection



Cat. No. 35 | File Name: 225-038.jpg

Salvator Rosa (1615 - 1673)

The Crucifixion of Polycrates, c. 1661

pen and brown ink over graphite, 22.3 x 12.7 cm (8 3/4 x 5); framed: 43.2 x 35.6 cm (17 x 14)

Private Collection



Cat. No. 36 | File Name: 225-023.jpg

Giovanni Francesco Grimaldi (1606 - 1680)

Fortress on a Hilltop,

pen and brown ink with brown wash, 24.2 x 27 cm (9 9/16 x 10 5/8); framed: 45.7 x 48.3 cm (18 x 19)

Private Collection



Catalog No. / File Name (If image available) | Caption (dimensions listed in centimeters followed by inches)

Image

Cat. No. 37 | File Name: 225-072.jpg

Ferdinand Bol (1616 - 1680)

Christ and the Woman of Samaria, mid-1640s

pen and brown ink with brown and gray-brown wash with corrections in white, 18.1 x 20.5 cm (7 1/8 x 8 1/16); framed: 40.6 x 42.6 cm (16 x 16 3/4)

Private Collection



Cat. No. 38 | File Name: 225-077.jpg

Jacob Jordaens (1593 - 1678)

Mary Anointing Christ's Feet, 1650/1655

pen and brown ink with brown wash and touches of orange-red chalk over graphite on three joined sheets, with later framing lines in pen and brown ink, 30.2 x 39.4 cm (11 7/8 x 15 1/2); framed: 53.3 x 61 cm (21 x 24)

Private Collection



Cat. No. 39 | File Name: 225-029.jpg

Pier Francesco Mola (1612 - 1666)

Two Studies of St. Cecilia Playing the Organ; verso, Two Studies of the Madonna and Child, c. 1648

pen and brown ink with brown and red washes over black chalk with touches of red chalk; verso, pen and brown ink with brown wash over black chalk, 18.7 x 25.5 cm (7 3/8 x 10 1/16); framed: 43.2 x 50.8 cm (17 x 20)

Private Collection



Cat. No. 40 | File Name: 225-015.jpg

Pietro da Cortona (1597 - 1669)

The Trinity, 1656

black chalk with pen and brown ink and brown wash, heightened with white, on brown paper, with a separate sketch of flying angels in red chalk at upper right, 39.7 x 26.4 cm (15 5/8 x 10 3/8); framed: 76.2 x 59.7 cm (30 x 23 1/2)

Private Collection



Cat. No. 41 | File Name: 225-035.jpg

Mattia Preti (1613 - 1699)

Study for the Figure of Adrian Fortescue; verso, Study for the Figure of Juan d'Eguaras, 1662/1666

red chalk, 37.6 x 27 cm (14 13/16 x 10 5/8); framed: 65.4 x 52.1 cm (25 3/4 x 20 1/2)

Private Collection



Cat. No. 42 | File Name: 225-051.jpg

Claude Lorrain (1600 - 1682)

Landscape at Sunset with Mercury and Battus, c. 1663

pen and brown ink with brown wash over graphite, 23 x 38.1 cm (9 1/16 x 15); framed: 47 x 61.6 cm (18 1/2 x 24 1/4)

Private Collection



Catalog No. / File Name (If image available) | Caption (dimensions listed in centimeters followed by inches)

Image

Cat. No. 43 | File Name: 225-080.jpg

Philip Koninck (1619 - 1688)

The Anointing of a Queen, 1664

pen and brown ink with brown wash and touches of white, with later framing lines in pen and brown ink, 20.1 x 36.1 cm (7 15/16 x 14 1/4); framed: 41.9 x 58.4 cm (16 1/2 x 23)

Private Collection



Cat. No. 44 | File Name: 225-088.jpg

Francis Place (1647 - 1728)

Ruins of Old St. Paul's Cathedral, c. 1670/1672

pen and brown ink with gray wash and graphite, partially squared in graphite, on two joined sheets, 22 x 19.2 cm (8 11/16 x 7 9/16); framed: 37.5 x 34.3 cm (14 3/4 x 13 1/2)

Private Collection



Cat. No. 45 | File Name: 225-021.jpg

Giovanni Battista Gaulli (1639 - 1709)

Venus Presenting Arms to Aeneas, c. 1675

pen and dark brown ink with brown wash over black chalk, heightened with white, on brown paper, 23.1 x 37.7 cm (9 1/8 x 14 13/16); framed: 48.3 x 61 cm (19 x 24)

Private Collection



Cat. No. 46 | File Name: 225-022.jpg

Giovanni Battista Gaulli (1639 - 1709)

Lot and His Daughters Fleeing Sodom; verso, Landscape with Trees and a Mountain, 1680s

pen and brown ink with brown wash and black chalk, heightened with white, with later (?) framing lines in black chalk; verso, black chalk, 20.6 x 27.8 cm (8 1/8 x 10 15/16); framed: 41.3 x 53.3 cm (16 1/4 x 21)

Private Collection



Cat. No. 47 | File Name: 225-028.jpg

Carlo Maratta (1625 - 1713)

Penitent Saint Mary Magdalen Attended by Angels, 1689/1695

red chalk, with later framing line in black chalk, 41.2 x 25.5 cm (16 3/16 x 10); framed: 69.9 x 50.8 cm (27 1/2 x 20)

Private Collection



Cat. No. 48 | File Name: 225-099.jpg

Antoine Watteau (1684 - 1721)

A Man Playing the Guitar, 1717/1718

red, black, and white chalk on gray-brown paper, 25.7 x 26.2 cm (10 1/8 x 10 5/16)

Private Collection



Catalog No. / File Name (If image available) | Caption (dimensions listed in centimeters followed by inches)

Image

Cat. No. 49 | File Name: 225-063.jpg

Nicolas Lancret (1690 - 1743)

A Huntsman Seated on the Ground, c. 1738

black and white chalk on gray-brown paper, 22 x 16.5 cm (8 11/16 x 6 1/2); framed: 43.2 x 36.8 cm (17 x 14 1/2)

Private Collection



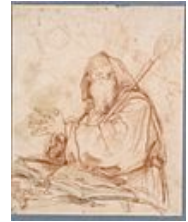
Cat. No. 50 | File Name: 225-034.jpg

Giovanni Battista Pittoni (1520 - 1583)

Saint Francis of Paola, 1740s

red chalk with graphite added on the book and in the shadows thrown by the book and rosary, 22.6 x 18.7 cm (8 7/8 x 7 3/8); framed: 38.7 x 33.7 cm (15 1/4 x 13 1/4)

Private Collection



Cat. No. 51 | File Name: 225-033.jpg

Giovanni Battista Piazzetta (1683 - 1754)

God the Father and the Holy Spirit, c. 1742

black and white chalk on gray paper, 39.2 x 31.1 cm (15 7/16 x 12 1/4); framed: 75.6 x 62.2 cm (29 3/4 x 24 1/2)

Private Collection



Cat. No. 52 | File Name: 225-042.jpg

Giovanni Battista Tiepolo (1696 - 1770)

The Annunciation, 1735/1740

pen and brown ink with brown wash over black chalk, with later framing lines in black chalk, 43.5 x 30.4 cm (17 1/8 x 12); framed: 73.7 x 55.9 cm (29 x 22)

Private Collection



Cat. No. 53 | File Name: 225-043.jpg

Giovanni Battista Tiepolo (1696 - 1770)

A Reclining Male Nude Reaching Forward and Upward; verso, A Reclining Male Nude and Three Studies of His Head, c. 1752

red and white chalk on blue paper, 32.2 x 49.7 cm (12 11/16 x 19 9/16); framed: 45.1 x 62.9 cm (17 3/4 x 24 3/4)

Private Collection



Catalog No. / File Name (If image available) | Caption (dimensions listed in centimeters followed by inches)

Image

Cat. No. 54 | File Name: 225-017.jpg

Francesco Fontebasso (1709 - 1769)

The Rest on the Flight into Egypt, c. 1750

pen and black ink with red and brown wash over black chalk, heightened with white, with border lines by the artist in pen and brown ink, later reinforced in black ink, 48 x 34.6 cm (18 7/8 x 13 5/8); 45.3 x 32.8 cm (17 13/16 x 12 7/8); framed: 68.6 x 53.3 cm (27 x 21)

Private Collection



Cat. No. 55 | File Name: 225-019.jpg

Ubaldo Gandolfi (1728 - 1781)

Jesus and the Canaanite Woman, c. 1764

pen and brown ink with brown wash over black chalk, with border lines by the artist in pen and brown ink, 21.2 x 29.5 cm (8 5/16 x 11 9/16); framed: 39.4 x 48.3 cm (15 1/2 x 19)

Private Collection



Cat. No. 56 | File Name: 225-050.jpg

François Boucher (1703 - 1770)

The Adoration of the Magi, c. 1760

grisaille gouache over black chalk, 22.5 x 26.7 cm (8 13/16 x 10 1/2); framed: 39.7 x 43.8 cm (15 5/8 x 17 1/4)

Private Collection



Cat. No. 57 | File Name: 225-064.jpg

Charles Joseph Natoire (1700 - 1777)

A Stone Staircase in the Park at Arcueil, 1747

pen and brown ink with brown wash and blue watercolor over black chalk, heightened with white; figures added in pen and brown ink heightened with white over graphite, with later framing lines in pen and brown ink, 23.2 x 32.3 cm (9 1/8 x 12 3/4); framed: 47.6 x 57.8 cm (18 3/4 x 22 3/4)

Private Collection



Cat. No. 58 | File Name: 225-066.jpg

Hubert Robert (1733 - 1808)

The Temple of Athena at Paestum, 1760

red chalk, with later framing lines in pen and brown ink, 33.5 x 46.2 cm (13 3/16 x 18 3/16); framed: 32.9 x 44.6 cm (12 15/16 x 17 9/16)

Private Collection



Cat. No. 59 | File Name: 225-056.jpg

Jean-Honoré Fragonard (1732 - 1806)

The Little Park, c. 1765

pen and brown ink with brown and gray wash and some white gouache (at lower left), over red chalk counterproof, with later framing lines in pen and brown ink, 34.7 x 44.1 cm (13 5/8 x 17 5/16); framed: 60.3 x 69.2 cm (23 3/4 x 27 1/4)

Private Collection



Catalog No. / File Name (If image available) | Caption (dimensions listed in centimeters followed by inches)

Image

Cat. No. 60 | File Name: 225-057.jpg

Jean-Honoré Fragonard (1732 - 1806)

Two Cypresses in an Italian Garden, c. 1774

two shades of red chalk, with later framing lines in pen and brown ink, 26.9 x 32.5 cm (10 5/8 x 12 13/16); framed: 48.9 x 56.2 cm (19 1/4 x 22 1/8)

Private Collection



Cat. No. 61 | File Name: 225-070.jpg

François-André Vincent (1746 - 1816)

The Gardens of the Villa Negroni, 1773

black chalk and white gouache on light brown paper, with later framing lines in pen and brown ink, 34.2 x 44.4 cm (13 1/2 x 17 1/2); framed: 52.4 x 62.2 cm (20 5/8 x 24 1/2)

Private Collection



Cat. No. 62 | File Name: 225-069.jpg

Jacques Philippe Joseph de Saint-Quentin (1738 - in or after 1780)

View in the Garden of a Roman Villa, c. 1770

black chalk with gray wash and white gouache on green-blue paper, with later framing lines in pen and brown ink, 46.2 x 32.3 cm (18 3/16 x 12 3/4); framed: 68 x 55.4 cm (26 3/4 x 21 13/16)

Private Collection



Cat. No. 63 | File Name: 225-068.jpg

Gabriel Jacques de Saint-Aubin (1724 - 1780)

Jean-Jacques Rousseau at the Café de la Régence, c. 1771

pen and black ink with gray, brown, and pink wash, 19.1 x 15.3 cm (7 1/2 x 6); framed: 32.4 x 28.9 cm (12 3/4 x 11 3/8)

Private Collection



Cat. No. 64 | File Name: 225-058.jpg

Jean-Honoré Fragonard (1732 - 1806)

The Bread Box, c. 1777

brush and brown wash over graphite, 26.3 x 39 cm (10 3/8 x 15 3/8); framed: 48.9 x 61.3 cm (19 1/4 x 24 1/8)

Private Collection



Cat. No. 65 | File Name: 225-093.jpg

François-André Vincent (1746 - 1816)

The Drawing Lesson, 1777

brush and brown wash over graphite, sheet: 32.5 x 37.7 cm (12 13/16 x 14 13/16); framed: 57.2 x 61.6 cm (22 1/2 x 24 1/4)

National Gallery of Art, Washington, Gift of the Private Collector, 2000.99.1



Catalog No. / File Name (If image available) | Caption (dimensions listed in centimeters followed by inches)

Image

Cat. No. 66 | File Name: 225-060.jpg
Jean-Baptiste Greuze (1725 - 1805)
Two Nude Girls, 1770s

two shades of red chalk, with later framing lines in pen and brown ink, 49.8 x 32.2 cm (19 5/8 x 12 11/16); framed: 68.6 x 50.8 cm (27 x 20)

Private Collection



Cat. No. 67 | File Name: 225-020.jpg
Gaetano Gandolfi (1734 - 1802)
Marta Gandolfi, c. 1778

black, red, and white chalk with stumping on brown paper, 29 x 20.3 cm (11 3/8 x 8); framed: 45.7 x 36.2 cm (18 x 14 1/4)

Private Collection



Cat. No. 68 | File Name: 225-044.jpg
Giovanni Domenico Tiepolo (1727 - 1804)
The Madonna and Child Appearing to Saint Philip Neri, 1780s

pen and brown ink with brown wash over black chalk, with border lines by the artist in pen and brown ink, sheet: 49 x 38.5 cm (19 1/4 x 15 1/8); image: 46.4 x 35.9 cm (18 1/4 x 14 1/8); framed: 62.2 x 54.6 cm (24 1/2 x 21 1/2)

Private Collection



Cat. No. 69 | File Name: 225-024.jpg
Francesco Guardi (1712 - 1793)
A Lagoon Capriccio with a Fortified Tower, 1780s

pen and brown ink with brown wash over black chalk, with border lines by the artist in pen and brown ink over black chalk, sheet: 21 x 30.5 cm (8 1/4 x 12); image: 20.3 x 29.5 cm (8 x 11 5/8); framed: 41.9 x 52.7 cm (16 1/2 x 20 3/4)

Private Collection



Cat. No. 70 | File Name: 225-085.jpg
Thomas Gainsborough (1727 - 1788)
Wooded Landscape with a Stream, mid-1780s

black and white chalk on gray-blue paper, 24.6 x 32.1 cm (9 11/16 x 12 5/8); framed: 44.8 x 51.1 cm (17 5/8 x 20 1/8)

Private Collection



Cat. No. 71 | File Name: 225-089.jpg
Paul Sandby (1731 - 1809)
Two Members of the Sandby Family in the Grounds of the Deputy Ranger's House, Windsor Great Park, late 1780s

pen and black ink and gray wash, watercolor, and gouache on blue paper, 28.9 x 38.4 cm (11 3/8 x 15 1/8); framed: 46.4 x 55.9 cm (18 1/4 x 22)

Private Collection



Catalog No. / File Name (If image available) | Caption (dimensions listed in centimeters followed by inches)

Image

Cat. No. 72 | File Name: 225-094.jpg

Jacob Cats (1741 - 1799)

The Wijde Kapelsteeg in Amsterdam with the Burgerweeshuis in the Distance, 1793

pen and brown ink with brown wash over traces of graphite, 34.5 x 29 cm (13 9/16 x 11 7/16);
framed: 49.5 x 55.9 cm (19 1/2 x 22)

Private Collection



Cat. No. 73 | File Name: 225-076.jpg

Caspar David Friedrich (1774 - 1840)

Moonlit Landscape with Lovers and a Church, 1797/1798

pen and dark brown ink with brown, gray, and blue washes, heightened with white and touched with yellow and pink chalks, over graphite, with border lines by the artist (?) in pen and black ink, 8.9 x 12.7 cm (3 1/2 x 5); framed: 26.7 x 31.8 cm (10 1/2 x 12 1/2)

Private Collection



Cat. No. 74 | File Name: 225-055.jpg

Michel-Martin Droelling

Presumed Portrait of Gaspard Bonnet, 1814

black chalk and stumping, heightened with white on light brown paper, 22.9 x 19.3 cm (9 x 7 5/8); framed: 40.6 x 35.2 cm (16 x 13 7/8)

Private Collection



Cat. No. 75 | File Name: 225-062.jpg

Louis Lafitte

Portrait of a Young Woman Seated at a Table, 1810/1822

black chalk heightened with white on blue paper, 24.1 x 18.3 cm (9 7/16 x 7 1/4); framed: 40 x 34.9 cm (15 3/4 x 13 3/4)

Private Collection



Cat. No. 76 | File Name: 225-061.jpg

Jean-Auguste-Dominique Ingres (1780 - 1867)

Madeleine Ingres with the Artist, 1830

graphite, 18.7 x 13.3 cm (7 3/8 x 5 1/4); framed: 39.4 x 33.7 cm (15 1/2 x 13 1/4)

Private Collection



Cat. No. 77 | File Name: 225-087.jpg

John Martin (1789 - 1854)

Figures Entering an Extensive Valley, c. 1820

brush and sepia ink with scratching out and some gum arabic, 25.5 x 36.8 cm (10 1/16 x 14 1/2);
framed: 50.2 x 62.9 cm (19 3/4 x 24 3/4)

Private Collection



Catalog No. / File Name (If image available) | Caption (dimensions listed in centimeters followed by inches)

Image

Cat. No. 78 | File Name: 225-084.jpg

John Constable (1776 - 1837)

Seascape with Sailing Vessels on the Horizon, c. 1824

oil on brown paper board (millboard), 11.5 x 17.5 cm (4 9/16 x 6 7/8); framed: 25.2 x 30.5 cm (9 15/16 x 12)

Private Collection



Cat. No. 79 | File Name: 225-086.jpg

John Linnell (1792 - 1882)

A Farmhouse at Shoreham, c. 1830

pen and brown ink with brown wash over graphite, 20.2 x 32 cm (7 15/16 x 12 5/8); framed: 43.8 x 54.6 cm (17 1/4 x 21 1/2)

Private Collection



Cat. No. 80 | File Name: 225-059.jpg

François-Marius Granet (1775 - 1849)

View in the Castelli Romani, c. 1830

watercolor with pen and brown ink over graphite, 20.8 x 24.2 cm (8 3/16 x 9 1/2); framed: 37.2 x 40.3 cm (14 5/8 x 15 7/8)

Private Collection



Cat. No. 81 | File Name: 225-053.jpg

Eugène Delacroix (1798 - 1863)

Cliffs at Fécamp, c. 1835/1839

watercolor and gouache over graphite on pale blue paper, 15.7 x 20.5 cm (6 3/16 x 8 1/16); framed: 27.9 x 33 cm (11 x 13)

Private Collection



Cat. No. 82 | File Name: 225-067.jpg

Théodore Rousseau (1812 - 1867)

A Marsh Landscape, c. 1852

brush and brown wash, 13.5 x 19.5 cm (5 5/16 x 7 11/16); framed: 24.1 x 30.2 cm (9 1/2 x 11 7/8)

Private Collection



Cat. No. 83 | File Name: 225-049.jpg

François Bonvin (1817 - 1887)

Seated Woman Reading, 1853

charcoal with stumping and erasure, 32.1 x 23.5 cm (12 1/2 x 9 1/4); framed: 32.1 x 22.9 cm (12 5/8 x 9)

Private Collection



Catalog No. / File Name (If image available) | Caption (dimensions listed in centimeters followed by inches)

Image

Cat. No. 84 | File Name: 225-048.jpg

Léon Bonvin

Still Life with Wildflowers in a Blue and White Faience Vase, 1858

pen and brown ink with watercolor and gouache, brown ink with gum arabic in the background, 22.5 x 15 cm (8 7/8 x 5 15/16); framed: 22.5 x 15.2 cm (8 7/8 x 6)

Private Collection



Cat. No. 85 | File Name: 225-052.jpg

Edgar Degas (1834 - 1917)

Ballet Dancers' Legs, c. 1870/1873

black chalk and white chalk on blue paper, 46.5 x 30.7 cm (18 5/8 x 12 1/8); framed: 68 x 51.4 cm (26 3/4 x 20 1/4)

Private Collection



Cat. No. 86 | File Name: 225-081.jpg

Adolph Menzel (1815 - 1905)

Seated Man Leaning Forward, 1887

graphite with stumping, 20.9 x 12.8 cm (8 1/4 x 5); framed: 40.6 x 31.8 cm (16 x 12 1/2)

Private Collection



Cat. No. 87 | File Name: 225-082.jpg

Adolph Menzel (1815 - 1905)

A Couple Looking at a Painting, 1893

graphite and stumping, 13.1 x 21.3 cm (5 1/8 x 8 3/8); framed: 27.9 x 36.8 cm (11 x 14 1/2)

Private Collection



Cat. No. 88 | File Name: 225-083.jpg

Sir Edward Coley Burne-Jones (1833 - 1898)

Phineus and His Courtiers Turned to Stone, c. 1876/1878

brush and brown wash with watercolor and white gouache on blue prepared paper, 33.3 x 65 cm (13 1/8 x 25 5/8); framed: 49.5 x 81.3 cm (19 1/2 x 32)

Private Collection



Cat. No. 89 | File Name: 225-100.jpg

Wilhelm Leibl (1844 - 1900)

Young Peasant Woman, 1889

brush and black ink and white gouache, 48.9 x 41 cm (19 1/4 x 16 1/8)

Private Collection



Catalog No. / File Name (If image available) | Caption (dimensions listed in centimeters followed by inches)

Image

Cat. No. 90 | File Name: 225-065.jpg

Odilon Redon (1840 - 1916)

Head of a Young Girl in Profile, c. 1895

two shades of red chalk on gray prepared paper, with partial border lines in red chalk by the artist (?), 44.5 x 30.9 cm (17 1/2 x 12 3/16); framed: 62.9 x 57.2 cm (24 3/4 x 22 1/2)

Private Collection



Cat. No. 91 | File Name: 225-079.jpg

Käthe Kollwitz (1867 - 1945)

Grieving Mother, 1903

black chalk and graphite on greenish wove paper, 45.8 x 63 cm (18 1/16 x 24 13/16); framed: 69.9 x 86.4 cm (27 1/2 x 34)

Private Collection



Cat. No. 92 | File Name: 225-078.jpg

Käthe Kollwitz (1867 - 1945)

Self-Portrait at Sixty, 1927

lithographic crayon on light brown paper, 61.4 x 47.8 cm (24 3/16 x 18 13/16); framed: 81.3 x 74.3 cm (32 x 29 1/4)

Private Collection



Cat. No. 93 | File Name: 225-075.jpg

Louis Corinth (1858 - 1925)

Self-Portrait, 1917

graphite on wove paper, 33.1 x 24.8 cm (13 1/16 x 9 3/4); framed: 54.6 x 46.4 cm (21 1/2 x 18 1/4)

Private Collection



Giovanni Francesco Barbieri, called Guercino (1591 - 1666)

The Return of the Prodigal Son, c. 1640

pen and brown iron gall ink on laid paper, sheet: 20.5 x 18 cm (8 1/16 x 7 1/16)

National Gallery of Art, Washington, Gift of the Private Collector and Ailsa Mellon Bruce Fund, 1998.103.1

Jacopo Chimenti (c. 1554 - 1610)

An Angel in Flight, c. 1594

black chalk and graphite on brown prepared paper, 38.3 x 25 cm (15 1/16 x 9 13/16)

National Gallery of Art, Washington, Gift of the Private Collector, 1999.29.1

Francis Danby (1793 - 1861)

Panorama of the Coast at Sunset [Estuary at Sunset], c. 1813

brown wash with white heightening on wove paper, 13.9 x 34.1 cm (5 1/2 x 13 7/16); 40.6 x 55.9 cm (16 x 22)

National Gallery of Art, Washington, Gift of the Private Collector, 2000.74.1

Cornelius Varley (1781 - 1873)

An Extensive View in Shropshire, 1803

watercolor over graphite on wove paper, 25.2 x 32.2 cm (9 15/16 x 12 11/16)

National Gallery of Art, Washington, Gift of the Private Collector, 2000.74.2

Cornelius Varley (1781 - 1873)

A Wooded Lane near Ross, 1803

watercolor over graphite on wove paper, 23.5 x 36.5 cm (9 1/4 x 14 3/8); mat: 40.6 x 55.9 cm (16 x 22)

National Gallery of Art, Washington, Gift of the Private Collector, 2000.74.3

Hyacinthe Rigaud (1659 - 1743)

Monseigneur Louis-Charles d'Orléans de Saint-Albin, Archbishop of Cambrai, 1740

black and white chalk on brown laid paper, 35.7 x 29.6 cm (14 1/16 x 11 5/8)

National Gallery of Art, Washington, Gift of the Private Collector, 2002.27.1

Francesco Brizio (c. 1575 - 1623)

An Elegant Young Man Personifying Vanity,

pen and brown ink over black chalk on laid paper, 19.5 x 29.9 cm (7 11/16 x 11 3/4)

National Gallery of Art, Washington, Gift of the Private Collector, 2002.64.1

Anton Graff (1736 - 1813)

Hands Holding a Sword and a Tricorn, c. 1790

charcoal touched with white chalk on brown laid paper, 29.4 x 38.4 cm (11 9/16 x 15 1/8)

National Gallery of Art, Washington, Gift of the Private Collector, 2003.57.1

Carl Larsson (1853 - 1919)

An Elegant Lady of the Eighteenth Century Holding a Fan, 1897

charcoal on light brown paper, laid down on board, 65.2 x 50.2 cm (25 11/16 x 19 3/4)

National Gallery of Art, Washington, Gift of the Private Collector, 2004.32.1

Anton Kern (1710 - 1747)

A Ceiling with Apollo Presiding over Military and Historical Learning, 1740s

watercolor, pen and gray ink over traces of black chalk on laid paper, 34.1 x 44.4 cm (13 7/16 x 17 1/2)

National Gallery of Art, Washington, Gift of the Private Collector and Ailsa Mellon Bruce and Professor William B. O'Neal Funds, 2005.80.1

Catalog No. / File Name (If image available) | Caption (dimensions listed in centimeters followed by inches)

Image

Jules-Ferdinand Jacquemart (1837 - 1880)

Sun-Drenched Hills near Menton, 1880

watercolor on heavy wove paper, 30.4 x 45.5 cm (11 15/16 x 17 15/16)

National Gallery of Art, Washington, Gift of the Private Collector, 2006.31.1

Joris van der Haagen (1615 - 1669)

Woods at Night with Travelers,

gray wash with white gouache on blue laid paper, laid down on blue album sheet, 22.4 x 28.2 cm (8 13/16 x 11 1/8)

National Gallery of Art, Washington, Gift of the Private Collector, 2006.104.1

Francesco Salviati (1510 - 1563)

Head of a Man Looking up (after Laocöon), c. 1540

chalk, framed: 44.5 x 39.4 cm (17 1/2 x 15 1/2)

Private Collection

Giovanni Balducci (c. 1560 - 1631 or after)

Christ and the Woman Taken in Adultery, 1580s

pen and ink with wash over chalk, heightened with white, framed: 49.5 x 39.4 cm (19 1/2 x 15 1/2)

Private Collection

Salvator Rosa (1615 - 1673)

Eight Drawings of Faces and figures, plus two anonymous drawings in chalk and pen on blue paper, 1640s and 1650s

pen and ink with wash, framed: 59.7 x 44.5 cm (23 1/2 x 17 1/2)

Private Collection

Ciro Ferri (1634 - 1689)

The Virgin and Child Appearing to Saint Martina, c. 1653

chalk heightened with white on blue paper, framed: 40.6 x 33.7 cm (16 x 13 1/4)

Private Collection

Carlo Innocenzo Carlone (1686 - 1775)

The Baptism of Constantine, 1763

Pen and ink with wash over chalk, framed: 58.4 x 43.2 cm (23 x 17)

Private Collection

Francesco Londonio (1723 - 1783)

Shepherd Boy Leaning on a Staff, c. 1763

chalk heightened with white on brown paper, framed: 58.4 x 38.1 cm (23 x 15)

Private Collection

Catalog No. / File Name (If image available) | Caption (dimensions listed in centimeters followed by inches)

Image

Henri-Joseph Harpignies (1819 - 1916)

Les Roches, 1894

watercolor over graphite, framed: 41.3 x 49.5 cm (16 1/4 x 19 1/2)

Private Collection
