

**Transmission of material in this release is embargoed until 8:30 a.m. (EST) Friday, January 8, 2010**

USDL-09-1583

Technical information:

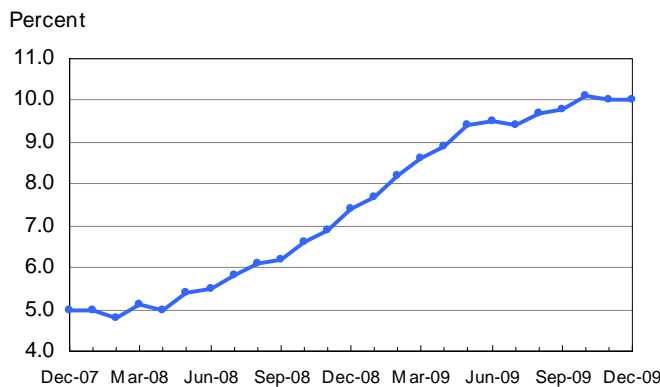
Household data: (202) 691-6378 • cpsinfo@bls.gov • www.bls.gov/cps  
Establishment data: (202) 691-6555 • cesinfo@bls.gov • www.bls.gov/ces

Media contact: (202) 691-5902 • PressOffice@bls.gov

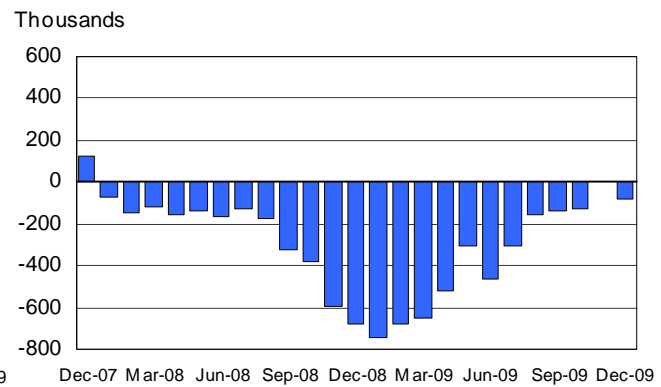
**THE EMPLOYMENT SITUATION – DECEMBER 2009**

**Nonfarm payroll employment** edged down (-85,000) in December, and the **unemployment rate** was unchanged at 10.0 percent, the U.S. Bureau of Labor Statistics reported today. Employment fell in construction, manufacturing, and wholesale trade, while temporary help services and health care added jobs.

**Chart 1. Unemployment rate, seasonally adjusted, December 2007 – December 2009**



**Chart 2. Nonfarm payroll employment over-the-month change, seasonally adjusted, December 2007 – December 2009**



**Revision of Seasonally Adjusted Household Survey Data**

Seasonally adjusted household survey data have been revised using updated seasonal adjustment factors, a procedure done at the end of each calendar year. Seasonally adjusted estimates back to January 2005 were subject to revision. The unemployment rates for January 2009 through November 2009 (as originally published and as revised) appear in table B on page 6, along with additional information about the revisions.

## Household Survey Data

In December, both the number of **unemployed persons**, at 15.3 million, and the **unemployment rate**, at 10.0 percent, were unchanged. At the start of the recession in December 2007, the number of unemployed persons was 7.7 million, and the unemployment rate was 5.0 percent. (See table A-1.)

Unemployment rates for the **major worker groups**—adult men (10.2 percent), adult women (8.2 percent), teenagers (27.1 percent), whites (9.0 percent), blacks (16.2 percent), and Hispanics (12.9 percent)—showed little change in December. The unemployment rate for Asians was 8.4 percent, not seasonally adjusted. (See tables A-1, A-2, and A-3.)

Among the unemployed, the number of **long-term unemployed** (those jobless for 27 weeks and over) continued to trend up, reaching 6.1 million. In December, 4 in 10 unemployed workers were jobless for 27 weeks or longer. (See table A-9.)

The **civilian labor force participation rate** fell to 64.6 percent in December. The **employment-population ratio** declined to 58.2 percent. (See table A-1.)

The number of persons employed **part time for economic reasons** (sometimes referred to as involuntary part-time workers) was about unchanged at 9.2 million in December and has been relatively flat since March. These individuals were working part time because their hours had been cut back or because they were unable to find a full-time job. (See table A-5.)

About 2.5 million persons were **marginally attached to the labor force** in December, an increase of 578,000 from a year earlier. (The data are not seasonally adjusted.) These individuals were not in the labor force, wanted and were available for work, and had looked for a job sometime in the prior 12 months. They were not counted as unemployed because they had not searched for work in the 4 weeks preceding the survey. (See table A-13.)

Among the marginally attached, there were 929,000 **discouraged workers** in December, up from 642,000 a year earlier. (The data are not seasonally adjusted.) Discouraged workers are persons not currently looking for work because they believe no jobs are available for them. The remaining 1.6 million persons marginally attached to the labor force had not searched for work in the 4 weeks preceding the survey for reasons such as school attendance or family responsibilities.

## Establishment Survey Data

Total **nonfarm payroll employment** edged down in December (-85,000). Job losses continued in construction, manufacturing, and wholesale trade, while temporary help services and health care continued to add jobs. During 2009, monthly job losses moderated substantially. Employment losses in the first quarter of 2009 averaged 691,000 per month, compared with an average loss of 69,000 per month in the fourth quarter. (See table B-1.)

**Construction** employment declined by 53,000 in December, with job losses throughout the industry. Employment in construction has fallen by 1.6 million since the recession began.

In December, employment in **manufacturing** decreased by 27,000. The average monthly decline for the last 6 months of 2009 (-41,000) was much lower than the average monthly decline for the first half

of the year (-171,000). Since the recession began, manufacturing employment has fallen by 2.1 million; three-fourths of this drop occurred in the durable goods component (-1.6 million).

**Wholesale trade** employment declined by 18,000 in December, with the majority of the decline occurring among durable goods wholesalers. Employment in **retail trade** was little changed over the month, although general merchandise stores lost 15,000 jobs.

**Temporary help services** added 47,000 jobs in December. Since reaching a low point in July, temporary help services employment has risen by 166,000.

**Health care** employment continued to increase in December (22,000), with notable gains in offices of physicians (9,000) and home health care services (8,000). The health care industry has added 631,000 jobs since the recession began.

In December, the **average workweek** for production and nonsupervisory workers on private nonfarm payrolls was unchanged at 33.2 hours. The manufacturing workweek, at 40.4 hours, and factory overtime, at 3.4 hours, were unchanged over the month. Since May, the manufacturing workweek has increased by 1.0 hour. (See table B-2.)

In December, **average hourly earnings** of production and nonsupervisory workers on private nonfarm payrolls rose by 3 cents, or 0.2 percent, to \$18.80. Over the past 12 months, average hourly earnings have risen by 2.2 percent, while average weekly earnings have risen by 1.9 percent. (See table B-3.)

The change in total nonfarm payroll employment for October was revised from -111,000 to -127,000, and the change for November was revised from -11,000 to +4,000.

---

**The Employment Situation for January is scheduled to be released on Friday, February 5, 2010, at 8:30 a.m. (EST).**

### **Upcoming Changes to The Employment Situation News Release**

Effective with the release of January 2010 data on February 5, 2010, the U.S. Bureau of Labor Statistics will introduce several changes to The Employment Situation news release text and tables. Two new summary tables—one for the household survey and one for the establishment survey—will replace the current table A. In addition, three new household data tables will provide information on the employment status of veterans, persons with a disability, and the foreign born. Also, the establishment data tables have been largely redesigned to include information on all employee hours and earnings, women employees, and production and non-supervisory employees. The ordering and format of some tables also will change. Additional information is available at [www.bls.gov/bls/upcoming\\_empsit\\_changes.htm](http://www.bls.gov/bls/upcoming_empsit_changes.htm).

### **Revisions in the Establishment Survey Data**

With the release of January 2010 data on February 5, 2010, the Current Employment Statistics survey will introduce revisions to nonfarm payroll employment, hours, and earnings data to reflect the annual benchmark adjustments for March 2009 and updated seasonal adjustment factors. Not seasonally adjusted data beginning with April 2008 and seasonally adjusted data beginning with January 2005 are subject to revision.

### **Revisions in the Household Survey Data**

Effective with the release of data for January 2010, revisions will be introduced into the population controls for the household survey. These changes reflect the routine annual updating of intercensal population estimates by the U.S. Census Bureau.

**Table A. Major indicators of labor market activity, seasonally adjusted**

(Numbers in thousands)

Category	Quarterly averages		Monthly data			Nov.-Dec. change
	III 2009	IV 2009	Oct. 2009	Nov. 2009	Dec. 2009	
<b>HOUSEHOLD DATA</b>	<b>Labor force status</b>					
Civilian labor force .....	154,235	153,544	153,854	153,720	153,059	-661
Employment .....	139,339	138,138	138,242	138,381	137,792	-589
Unemployment .....	14,895	15,406	15,612	15,340	15,267	-73
Not in labor force .....	81,858	83,195	82,696	83,022	83,865	843
	<b>Unemployment rates</b>					
All workers .....	9.7	10.0	10.1	10.0	10.0	0.0
Adult men .....	10.1	10.4	10.6	10.4	10.2	-2
Adult women .....	7.7	8.1	8.1	8.0	8.2	.2
Teenagers .....	25.4	27.2	27.6	26.8	27.1	.3
White .....	8.9	9.2	9.4	9.3	9.0	-.3
Black or African American .....	15.1	15.8	15.7	15.6	16.2	.6
Hispanic or Latino ethnicity .....	12.7	12.9	13.1	12.7	12.9	.2
<b>ESTABLISHMENT DATA</b>	<b>Employment</b>					
Nonfarm employment .....	131,262	p 130,965	130,991	p 130,995	p 130,910	p -85
Goods-producing <sup>1</sup> .....	18,595	p 18,313	18,379	p 18,321	p 18,240	p -81
Construction .....	6,100	p 5,951	5,987	p 5,960	p 5,907	p -53
Manufacturing .....	11,786	p 11,660	11,692	p 11,657	p 11,630	p -27
Service-providing <sup>1</sup> .....	112,667	p 112,652	112,612	p 112,674	p 112,670	p -4
Retail trade <sup>2</sup> .....	14,720	p 14,634	14,647	p 14,633	p 14,623	p -10
Professional and business service .....	16,628	p 16,751	16,675	p 16,764	p 16,814	p 50
Education and health services .....	19,307	p 19,420	19,384	p 19,421	p 19,456	p 35
Leisure and hospitality .....	13,172	p 13,117	13,134	p 13,121	p 13,096	p -25
Government .....	22,470	p 22,480	22,484	p 22,488	p 22,467	p -21
	<b>Hours of work<sup>3</sup></b>					
Total private .....	33.1	p 33.1	33.0	p 33.2	p 33.2	p 0.0
Manufacturing .....	39.9	p 40.3	40.1	p 40.4	p 40.4	p .0
Overtime .....	3.0	p 3.3	3.2	p 3.4	p 3.4	p .0
	<b>Indexes of aggregate weekly hours (2002=100)<sup>3</sup></b>					
Total private .....	99.0	p 98.9	98.5	p 99.1	p 99.1	p 0.0
	<b>Earnings<sup>3</sup></b>					
Average hourly earnings, total private .....	\$18.64	p \$18.77	\$18.74	p \$18.77	p \$18.80	p \$0.03
Average weekly earnings, total private .....	617.10	p 621.91	618.42	p 623.16	p 624.16	p 1.00

<sup>1</sup> Includes other industries, not shown separately.

<sup>2</sup> Quarterly averages and the over-the-month change are calculated using unrounded data.

<sup>3</sup> Data relate to private production and nonsupervisory workers.

p = preliminary.

NOTE: Seasonally adjusted household data have been revised. See note on page 6.

## Revision of Seasonally Adjusted Household Survey Data

At the end of each calendar year, BLS routinely updates the seasonal adjustment factors for the labor force series derived from the Current Population Survey (CPS), or household survey. As a result of this process, seasonally adjusted data for January 2005 through November 2009 were subject to revision.

Table B shows the unemployment rates for January 2009 through November 2009, as first published and as revised. The rates were unchanged in 7 of the 11 months and changed by one-tenth of a percentage point in the remaining 4 months. Revised seasonally adjusted data for other major labor force series beginning in December 2008 appear in table C.

An article describing the seasonal adjustment methodology for the household survey data and revised data for January 2009 through November 2009 is available at [www.bls.gov/cps/cpsrs2010.pdf](http://www.bls.gov/cps/cpsrs2010.pdf).

Historical data for the household series contained in the A tables of this release can be accessed at [www.bls.gov/cps/cpsatabs.htm](http://www.bls.gov/cps/cpsatabs.htm). Revised historical seasonally adjusted monthly and quarterly data for additional series are available on the Internet at [ftp.bls.gov/pub/special.requests/lf/](http://ftp.bls.gov/pub/special.requests/lf/).

**Table B. Seasonally adjusted unemployment rates and changes due to revision, January–November 2009**

Year and month	As first published	As revised	Change
<b>2009</b>			
January .....	7.6	7.7	0.1
February .....	8.1	8.2	.1
March .....	8.5	8.6	.1
April .....	8.9	8.9	.0
May .....	9.4	9.4	.0
June .....	9.5	9.5	.0
July .....	9.4	9.4	.0
August .....	9.7	9.7	.0
September .....	9.8	9.8	.0
October .....	10.2	10.1	-.1
November .....	10.0	10.0	.0

Table C. Employment status of the civilian population by sex and age, seasonally adjusted

(Numbers in thousands)

Employment status, sex, and age	2008	2009											
	Dec.	Jan.	Feb.	Mar.	Apr.	May	June	July	Aug.	Sept.	Oct.	Nov.	Dec.
<b>TOTAL</b>													
Civilian noninstitutional population <sup>1</sup> .....	235,035	234,739	234,913	235,086	235,271	235,452	235,655	235,870	236,087	236,322	236,550	236,743	236,924
Civilian labor force .....	154,587	154,140	154,401	154,164	154,718	154,956	154,759	154,351	154,426	153,927	153,854	153,720	153,059
Participation rate .....	65.8	65.7	65.7	65.6	65.8	65.8	65.7	65.4	65.4	65.1	65.0	64.9	64.6
Employed .....	143,188	142,221	141,687	140,854	140,902	140,438	140,038	139,817	139,433	138,768	138,242	138,381	137,792
Employment-population ratio .....	60.9	60.6	60.3	59.9	59.9	59.6	59.4	59.3	59.1	58.7	58.4	58.5	58.2
Unemployed .....	11,400	11,919	12,714	13,310	13,816	14,518	14,721	14,534	14,993	15,159	15,612	15,340	15,267
Unemployment rate .....	7.4	7.7	8.2	8.6	8.9	9.4	9.5	9.4	9.7	9.8	10.1	10.0	10.0
<b>Men, 20 years and over</b>													
Civilian noninstitutional population <sup>1</sup> .....	105,083	104,902	104,999	105,095	105,196	105,299	105,412	105,530	105,651	105,780	105,906	106,018	106,125
Civilian labor force .....	79,108	78,769	78,859	78,680	79,106	79,339	79,246	78,984	79,196	78,977	79,024	78,901	78,402
Participation rate .....	75.3	75.1	75.1	74.9	75.2	75.3	75.2	74.8	75.0	74.7	74.6	74.4	73.9
Employed .....	73,237	72,625	72,266	71,667	71,665	71,552	71,354	71,255	71,142	70,861	70,662	70,662	70,391
Employment-population ratio .....	69.7	69.2	68.8	68.2	68.1	68.0	67.7	67.3	67.3	67.0	66.7	66.7	66.3
Unemployed .....	5,871	6,144	6,593	7,013	7,441	7,787	7,892	7,728	8,055	8,116	8,362	8,239	8,011
Unemployment rate .....	7.4	7.8	8.4	8.9	9.4	9.8	10.0	9.8	10.2	10.3	10.6	10.4	10.2
<b>Women, 20 years and over</b>													
Civilian noninstitutional population <sup>1</sup> .....	112,825	112,738	112,824	112,908	112,999	113,089	113,189	113,296	113,405	113,522	113,636	113,737	113,832
Civilian labor force .....	68,904	68,793	68,914	68,972	69,105	69,060	68,984	68,910	68,847	68,686	68,687	68,742	68,620
Participation rate .....	61.1	61.0	61.1	61.1	61.2	61.1	60.9	60.8	60.7	60.5	60.4	60.4	60.3
Employed .....	64,744	64,391	64,238	64,110	64,147	63,847	63,741	63,685	63,552	63,280	63,133	63,269	62,998
Employment-population ratio .....	57.4	57.1	56.9	56.8	56.8	56.5	56.3	56.2	56.0	55.7	55.6	55.6	55.3
Unemployed .....	4,160	4,402	4,676	4,863	4,957	5,213	5,243	5,225	5,295	5,406	5,554	5,473	5,622
Unemployment rate .....	6.0	6.4	6.8	7.1	7.2	7.5	7.6	7.6	7.7	7.9	8.1	8.0	8.2
<b>Both sexes, 16 to 19 years</b>													
Civilian noninstitutional population <sup>1</sup> .....	17,126	17,098	17,090	17,083	17,076	17,064	17,053	17,044	17,031	17,020	17,008	16,988	16,967
Civilian labor force .....	6,575	6,578	6,628	6,512	6,507	6,557	6,529	6,457	6,383	6,264	6,143	6,077	6,037
Participation rate .....	38.4	38.5	38.8	38.1	38.1	38.4	38.3	37.9	37.5	36.8	36.1	35.8	35.6
Employed .....	5,207	5,205	5,183	5,077	5,089	5,039	4,943	4,877	4,740	4,627	4,448	4,450	4,403
Employment-population ratio .....	30.4	30.4	30.3	29.7	29.8	29.5	29.0	28.6	27.8	27.2	26.1	26.2	25.9
Unemployed .....	1,368	1,373	1,445	1,435	1,418	1,518	1,586	1,581	1,643	1,637	1,696	1,627	1,634
Unemployment rate .....	20.8	20.9	21.8	22.0	21.8	23.2	24.3	24.5	25.7	26.1	27.6	26.8	27.1

<sup>1</sup> The population figures are not adjusted for seasonal variation.

NOTE: Seasonally adjusted data have been revised to reflect updated seasonal adjustment factors.

## **Frequently Asked Questions about Employment and Unemployment Estimates**

### **Why are there two monthly measures of employment?**

The household survey and establishment survey both produce sample-based estimates of employment and both have strengths and limitations. The establishment survey employment series has a smaller margin of error on the measurement of month-to-month change than the household survey because of its much larger sample size. An over-the-month employment change of 107,000 is statistically significant in the establishment survey, while the threshold for a statistically significant change in the household survey is about 400,000. However, the household survey has a more expansive scope than the establishment survey because it includes the self-employed, unpaid family workers, agricultural workers, and private household workers, who are excluded by the establishment survey. The household survey also provides estimates of employment for demographic groups.

### **Are undocumented immigrants counted in the surveys?**

Neither the establishment nor household survey is designed to identify the legal status of workers. Thus, while it is likely that both surveys include at least some undocumented immigrants, it is not possible to determine how many are counted in either survey. The household survey does include questions about whether respondents were born outside the United States. Data from these questions show that foreign-born workers accounted for 15.6 percent of the labor force in 2008.

### **Why does the establishment survey have revisions?**

The establishment survey revises published estimates to improve its data series by incorporating additional information that was not available at the time of the initial publication of the estimates. The establishment survey revises its initial monthly estimates twice, in the immediately succeeding 2 months, to incorporate additional sample receipts from respondents in the survey and recalculated seasonal adjustment factors. For more information on the monthly revisions, please visit [www.bls.gov/ces/cesrevinfo.htm](http://www.bls.gov/ces/cesrevinfo.htm).

On an annual basis, the establishment survey incorporates a benchmark revision that re-anchors estimates to nearly complete employment counts available from unemployment insurance tax records. The benchmark helps to control for sampling and modeling errors in the estimates. For more information on the annual benchmark revision, please visit [www.bls.gov/web/cesbmart.htm](http://www.bls.gov/web/cesbmart.htm).

### **Does the establishment survey sample include small firms?**

Yes; about 40 percent of the establishment survey sample is comprised of business establishments with fewer than 20 employees. The establishment survey sample is designed to maximize the reliability of the total nonfarm employment estimate; firms from all size classes and industries are appropriately sampled to achieve that goal.

### **Does the establishment survey account for employment from new businesses?**

Yes; monthly establishment survey estimates include an adjustment to account for the net employment change generated by business births and deaths. The adjustment comes from an econometric model that forecasts the monthly net jobs impact of business births and deaths based on the actual past values of the net impact that can be observed with a lag from the Quarterly Census of Employment and Wages. The establishment survey uses modeling rather than sampling for this purpose because the survey is not



immediately able to bring new businesses into the sample. There is an unavoidable lag between the birth of a new firm and its appearance on the sampling frame and availability for selection. BLS adds new businesses to the survey twice a year.

**Is the count of unemployed persons limited to just those people receiving unemployment insurance benefits?**

No; the estimate of unemployment is based on a monthly sample survey of households. All persons who are without jobs and are actively seeking and available to work are included among the unemployed. (People on temporary layoff are included even if they do not actively seek work.) There is no requirement or question relating to unemployment insurance benefits in the monthly survey.

**Does the official unemployment rate exclude people who have stopped looking for work?**

Yes; however, there are separate estimates of persons outside the labor force who want a job, including those who have stopped looking because they believe no jobs are available (discouraged workers). In addition, alternative measures of labor underutilization (discouraged workers and other groups not officially counted as unemployed) are published each month in the Employment Situation news release.

## Technical Note

This news release presents statistics from two major surveys, the Current Population Survey (household survey) and the Current Employment Statistics survey (establishment survey). The household survey provides the information on the labor force, employment, and unemployment that appears in the A tables, marked HOUSEHOLD DATA. It is a sample survey of about 60,000 households conducted by the U.S. Census Bureau for the Bureau of Labor Statistics (BLS).

The establishment survey provides the information on the employment, hours, and earnings of workers on nonfarm payrolls that appears in the B tables, marked ESTABLISHMENT DATA. This information is collected from payroll records by BLS in cooperation with state agencies. The sample includes about 160,000 businesses and government agencies covering approximately 400,000 individual work-sites. The active sample includes about one-third of all non-farm payroll workers. The sample is drawn from a sampling frame of unemployment insurance tax accounts.

For both surveys, the data for a given month relate to a particular week or pay period. In the household survey, the reference week is generally the calendar week that contains the 12th day of the month. In the establishment survey, the reference period is the pay period including the 12th, which may or may not correspond directly to the calendar week.

### Coverage, definitions, and differences between surveys

**Household survey.** The sample is selected to reflect the entire civilian noninstitutional population. Based on responses to a series of questions on work and job search activities, each person 16 years and over in a sample household is classified as employed, unemployed, or not in the labor force.

People are classified as *employed* if they did any work at all as paid employees during the reference week; worked in their own business, profession, or on their own farm; or worked without pay at least 15 hours in a family business or farm. People are also counted as employed if they were temporarily absent from their jobs because of illness, bad weather, vacation, labor-management disputes, or personal reasons.

People are classified as *unemployed* if they meet all of the following criteria: They had no employment during the reference week; they were available for work at that time; and they made specific efforts to find employment sometime during the 4-week period ending with the reference week. Persons laid off from a job and expecting recall need not be looking for work to be counted as unemployed. The unemployment data derived from the household survey in no way depend upon the eligibility for or receipt of unemployment insurance benefits.

The *civilian labor force* is the sum of employed and unemployed persons. Those not classified as employed or unemployed are *not in the labor force*. The *unemployment rate* is the number unemployed as a percent of the labor

force. The *labor force participation rate* is the labor force as a percent of the population, and the *employment-population ratio* is the employed as a percent of the population.

**Establishment survey.** The sample establishments are drawn from private nonfarm businesses such as factories, offices, and stores, as well as federal, state, and local government entities. *Employees on nonfarm payrolls* are those who received pay for any part of the reference pay period, including persons on paid leave. Persons are counted in each job they hold. *Hours and earnings* data are for private businesses and relate only to production workers in the goods-producing sector and nonsupervisory workers in the service-providing sector. Industries are classified on the basis of their principal activity in accordance with the 2007 version of the North American Industry Classification System.

**Differences in employment estimates.** The numerous conceptual and methodological differences between the household and establishment surveys result in important distinctions in the employment estimates derived from the surveys. Among these are:

- The household survey includes agricultural workers, the self-employed, unpaid family workers, and private household workers among the employed. These groups are excluded from the establishment survey.
- The household survey includes people on unpaid leave among the employed. The establishment survey does not.
- The household survey is limited to workers 16 years of age and older. The establishment survey is not limited by age.
- The household survey has no duplication of individuals, because individuals are counted only once, even if they hold more than one job. In the establishment survey, employees working at more than one job and thus appearing on more than one payroll would be counted separately for each appearance.

### Seasonal adjustment

Over the course of a year, the size of the nation's labor force and the levels of employment and unemployment undergo sharp fluctuations due to such seasonal events as changes in weather, reduced or expanded production, harvests, major holidays, and the opening and closing of schools. The effect of such seasonal variation can be very large; seasonal fluctuations may account for as much as 95 percent of the month-to-month changes in unemployment.

Because these seasonal events follow a more or less regular pattern each year, their influence on statistical trends can be eliminated by adjusting the statistics from month to month. These adjustments make nonseasonal developments, such as declines in economic activity or increases in the participation of women in the labor force, easier to spot. For example, the large number of youth entering the labor force each June is likely to obscure any other changes that have taken place relative to May, making it difficult to determine if the level of economic activity has risen or declined. However, because the effect of students finishing school in previous years is known, the statistics for the current year can be adjusted to allow for a comparable change. Insofar as the seasonal adjustment is made correctly, the adjusted figure provides a more useful tool with which to analyze changes in economic activity.

Most seasonally adjusted series are independently adjusted in both the household and establishment surveys. However, the adjusted series for many major estimates, such as total payroll employment, employment in most supersectors, total employment, and unemployment are computed by aggregating independently adjusted component series. For example, total unemployment is derived by summing the adjusted series for four major age-sex components; this differs from the unemployment estimate that would be obtained by directly adjusting the total or by combining the duration, reasons, or more detailed age categories.

For both the household and establishment surveys, a concurrent seasonal adjustment methodology is used in which new seasonal factors are calculated each month, using all relevant data, up to and including the data for the current month. In the household survey, new seasonal factors are used to adjust only the current month's data. In the establishment survey, however, new seasonal factors are used each month to adjust the three most recent monthly estimates. In both surveys, revisions to historical data are made once a year.

## Reliability of the estimates

Statistics based on the household and establishment surveys are subject to both sampling and nonsampling error. When a sample rather than the entire population is surveyed, there is a chance that the sample estimates may differ from the "true" population values they represent. The exact difference, or *sampling error*, varies depending on the particular sample selected, and this variability is measured by the standard error of the estimate. There is about a 90-percent chance, or level of confidence, that an estimate based on a sample will differ by no more than 1.6 standard errors from the "true" population value because of sampling error. BLS analyses are generally conducted at the 90-percent level of confidence.

For example, the confidence interval for the monthly change in total employment from the household survey is on the order of plus or minus 430,000. Suppose the estimate of total employment increases by 100,000 from one month to the next. The 90-percent confidence interval on the monthly

change would range from -330,000 to 530,000 (100,000 +/- 430,000). These figures do not mean that the sample results are off by these magnitudes, but rather that there is about a 90-percent chance that the "true" over-the-month change lies within this interval. Since this range includes values of less than zero, we could not say with confidence that employment had, in fact, increased. If, however, the reported employment rise was half a million, then all of the values within the 90-percent confidence interval would be greater than zero. In this case, it is likely (at least a 90-percent chance) that an employment rise had, in fact, occurred. At an unemployment rate of around 5.5 percent, the 90-percent confidence interval for the monthly change in unemployment is about +/-280,000, and for the monthly change in the unemployment rate it is about +/-0.19 percentage point.

In general, estimates involving many individuals or establishments have lower standard errors (relative to the size of the estimate) than estimates which are based on a small number of observations. The precision of estimates is also improved when the data are cumulated over time such as for quarterly and annual averages. The seasonal adjustment process can also improve the stability of the monthly estimates.

The household and establishment surveys are also affected by *nonsampling error*. Nonsampling errors can occur for many reasons, including the failure to sample a segment of the population, inability to obtain information for all respondents in the sample, inability or unwillingness of respondents to provide correct information on a timely basis, mistakes made by respondents, and errors made in the collection or processing of the data.

For example, in the establishment survey, estimates for the most recent 2 months are based on incomplete returns; for this reason, these estimates are labeled preliminary in the tables. It is only after two successive revisions to a monthly estimate, when nearly all sample reports have been received, that the estimate is considered final.

Another major source of nonsampling error in the establishment survey is the inability to capture, on a timely basis, employment generated by new firms. To correct for this systematic underestimation of employment growth, an estimation procedure with two components is used to account for business births. The first component uses business deaths to impute employment for business births. This is incorporated into the sample-based link relative estimate procedure by simply not reflecting sample units going out of business, but imputing to them the same trend as the other firms in the sample. The second component is an ARIMA time series model designed to estimate the residual net birth/death employment not accounted for by the imputation. The historical time series used to create and test the ARIMA model was derived from the unemployment insurance universe micro-level database, and reflects the actual residual net of births and deaths over the past 5 years.

The sample-based estimates from the establishment survey are adjusted once a year (on a lagged basis) to universe counts of payroll employment obtained from administrative records of the unemployment insurance program. The difference between the March sample-based

employment estimates and the March universe counts is known as a benchmark revision, and serves as a rough proxy for total survey error. The new benchmarks also incorporate changes in the classification of industries. Over the past decade, absolute benchmark revisions for total nonfarm employment have averaged 0.2 percent, with a range from 0.1 percent to 0.6 percent.

### **Other information**

Information in this release will be made available to sensory impaired individuals upon request. Voice phone: (202) 691-5200; Federal Relay Service: (800) 877-8339.

Table A-1. Employment status of the civilian population by sex and age

(Numbers in thousands)

Employment status, sex, and age	Not seasonally adjusted			Seasonally adjusted <sup>1</sup>					
	Dec. 2008	Nov. 2009	Dec. 2009	Dec. 2008	Aug. 2009	Sept. 2009	Oct. 2009	Nov. 2009	Dec. 2009
<b>TOTAL</b>									
Civilian noninstitutional population .....	235,035	236,743	236,924	235,035	236,087	236,322	236,550	236,743	236,924
Civilian labor force .....	154,349	153,539	152,693	154,587	154,426	153,927	153,854	153,720	153,059
Participation rate .....	65.7	64.9	64.4	65.8	65.4	65.1	65.0	64.9	64.6
Employed .....	143,350	139,132	137,953	143,188	139,433	138,768	138,242	138,381	137,792
Employment-population ratio .....	61.0	58.8	58.2	60.9	59.1	58.7	58.4	58.5	58.2
Unemployed .....	10,999	14,407	14,740	11,400	14,993	15,159	15,612	15,340	15,267
Unemployment rate .....	7.1	9.4	9.7	7.4	9.7	9.8	10.1	10.0	10.0
Not in labor force .....	80,686	83,204	84,231	80,448	81,661	82,396	82,696	83,022	83,865
Persons who currently want a job .....	5,180	5,618	5,939	5,511	5,609	5,960	6,031	6,043	6,306
<b>Men, 16 years and over</b>									
Civilian noninstitutional population .....	113,769	114,632	114,728	113,769	114,288	114,411	114,530	114,632	114,728
Civilian labor force .....	82,226	81,612	81,243	82,462	82,466	82,197	82,184	81,964	81,454
Participation rate .....	72.3	71.2	70.8	72.5	72.2	71.8	71.8	71.5	71.0
Employed .....	75,548	73,107	72,258	75,812	73,436	73,120	72,844	72,794	72,499
Employment-population ratio .....	66.4	63.8	63.0	66.6	64.3	63.9	63.6	63.5	63.2
Unemployed .....	6,678	8,505	8,985	6,650	9,031	9,077	9,340	9,171	8,955
Unemployment rate .....	8.1	10.4	11.1	8.1	11.0	11.0	11.4	11.2	11.0
Not in labor force .....	31,543	33,019	33,485	31,308	31,821	32,214	32,346	32,667	33,274
<b>Men, 20 years and over</b>									
Civilian noninstitutional population .....	105,083	106,018	106,125	105,083	105,651	105,780	105,906	106,018	106,125
Civilian labor force .....	79,071	78,723	78,392	79,108	79,196	78,977	79,024	78,901	78,402
Participation rate .....	75.2	74.3	73.9	75.3	75.0	74.7	74.6	74.4	73.9
Employed .....	73,088	71,112	70,251	73,237	71,142	70,861	70,662	70,662	70,391
Employment-population ratio .....	69.6	67.1	66.2	69.7	67.3	67.0	66.7	66.7	66.3
Unemployed .....	5,984	7,611	8,141	5,871	8,055	8,116	8,362	8,239	8,011
Unemployment rate .....	7.6	9.7	10.4	7.4	10.2	10.3	10.6	10.4	10.2
Not in labor force .....	26,012	27,295	27,733	25,975	26,455	26,803	26,882	27,117	27,723
<b>Women, 16 years and over</b>									
Civilian noninstitutional population .....	121,266	122,111	122,197	121,266	121,799	121,911	122,020	122,111	122,197
Civilian labor force .....	72,122	71,927	71,450	72,126	71,960	71,729	71,669	71,756	71,605
Participation rate .....	59.5	58.9	58.5	59.5	59.1	58.8	58.7	58.8	58.6
Employed .....	67,802	66,024	65,694	67,376	65,997	65,648	65,398	65,587	65,293
Employment-population ratio .....	55.9	54.1	53.8	55.6	54.2	53.8	53.6	53.7	53.4
Unemployed .....	4,320	5,902	5,756	4,750	5,962	6,081	6,271	6,169	6,312
Unemployment rate .....	6.0	8.2	8.1	6.6	8.3	8.5	8.8	8.6	8.8
Not in labor force .....	49,143	50,184	50,747	49,140	49,839	50,182	50,350	50,355	50,591
<b>Women, 20 years and over</b>									
Civilian noninstitutional population .....	112,825	113,737	113,832	112,825	113,405	113,522	113,636	113,737	113,832
Civilian labor force .....	69,042	69,049	68,617	68,904	68,847	68,686	68,687	68,742	68,620
Participation rate .....	61.2	60.7	60.3	61.1	60.7	60.5	60.4	60.4	60.3
Employed .....	65,204	63,787	63,430	64,744	63,552	63,280	63,133	63,269	62,998
Employment-population ratio .....	57.8	56.1	55.7	57.4	56.0	55.7	55.6	55.6	55.3
Unemployed .....	3,838	5,262	5,187	4,160	5,295	5,406	5,554	5,473	5,622
Unemployment rate .....	5.6	7.6	7.6	6.0	7.7	7.9	8.1	8.0	8.2
Not in labor force .....	43,784	44,688	45,215	43,921	44,558	44,837	44,949	44,994	45,212
<b>Both sexes, 16 to 19 years</b>									
Civilian noninstitutional population .....	17,126	16,988	16,967	17,126	17,031	17,020	17,008	16,988	16,967
Civilian labor force .....	6,235	5,767	5,684	6,575	6,383	6,264	6,143	6,077	6,037
Participation rate .....	36.4	33.9	33.5	38.4	37.5	36.8	36.1	35.8	35.6
Employed .....	5,058	4,233	4,272	5,207	4,740	4,627	4,448	4,450	4,403
Employment-population ratio .....	29.5	24.9	25.2	30.4	27.8	27.2	26.1	26.2	25.9
Unemployed .....	1,177	1,534	1,412	1,368	1,643	1,637	1,696	1,627	1,634
Unemployment rate .....	18.9	26.6	24.8	20.8	25.7	26.1	27.6	26.8	27.1
Not in labor force .....	10,891	11,221	11,283	10,551	10,648	10,756	10,865	10,911	10,930

<sup>1</sup> The population figures are not adjusted for seasonal variation; therefore, identical numbers appear in the unadjusted and seasonally adjusted columns.  
NOTE: Updated population controls are introduced annually with the release of January data.

Table A-2. Employment status of the civilian population by race, sex, and age

(Numbers in thousands)

Employment status, race, sex, and age	Not seasonally adjusted			Seasonally adjusted <sup>1</sup>					
	Dec. 2008	Nov. 2009	Dec. 2009	Dec. 2008	Aug. 2009	Sept. 2009	Oct. 2009	Nov. 2009	Dec. 2009
<b>WHITE</b>									
Civilian noninstitutional population .....	190,351	191,516	191,628	190,351	191,086	191,244	191,394	191,516	191,628
Civilian labor force .....	125,588	125,170	124,344	125,792	126,038	125,581	125,567	125,258	124,605
Participation rate .....	66.0	65.4	64.9	66.1	66.0	65.7	65.6	65.4	65.0
Employed .....	117,409	114,403	113,416	117,335	114,784	114,215	113,754	113,669	113,339
Employment-population ratio .....	61.7	59.7	59.2	61.6	60.1	59.7	59.4	59.4	59.1
Unemployed .....	8,179	10,767	10,928	8,458	11,254	11,366	11,813	11,589	11,266
Unemployment rate .....	6.5	8.6	8.8	6.7	8.9	9.1	9.4	9.3	9.0
Not in labor force .....	64,763	66,346	67,284	64,559	65,048	65,663	65,827	66,258	67,024
<b>Men, 20 years and over</b>									
Civilian labor force .....	65,424	65,286	64,870	65,399	65,640	65,548	65,540	65,387	64,804
Participation rate .....	75.6	74.9	74.4	75.6	75.5	75.4	75.3	75.0	74.3
Employed .....	60,965	59,438	58,653	61,096	59,514	59,279	59,077	58,996	58,782
Employment-population ratio .....	70.5	68.2	67.2	70.6	68.5	68.1	67.8	67.7	67.4
Unemployed .....	4,459	5,848	6,217	4,303	6,126	6,269	6,463	6,390	6,022
Unemployment rate .....	6.8	9.0	9.6	6.6	9.3	9.6	9.9	9.8	9.3
<b>Women, 20 years and over</b>									
Civilian labor force .....	55,033	55,165	54,823	54,939	55,036	54,841	54,932	54,908	54,822
Participation rate .....	60.6	60.4	60.0	60.5	60.4	60.1	60.2	60.1	60.0
Employed .....	52,199	51,334	51,116	51,817	51,211	50,956	50,861	50,852	50,753
Employment-population ratio .....	57.5	56.2	55.9	57.1	56.2	55.8	55.7	55.6	55.5
Unemployed .....	2,833	3,831	3,707	3,122	3,825	3,884	4,071	4,056	4,069
Unemployment rate .....	5.1	6.9	6.8	5.7	7.0	7.1	7.4	7.4	7.4
<b>Both sexes, 16 to 19 years</b>									
Civilian labor force .....	5,131	4,719	4,651	5,454	5,362	5,192	5,095	4,963	4,978
Participation rate .....	39.1	36.3	35.9	41.6	41.2	39.9	39.2	38.2	38.4
Employed .....	4,245	3,631	3,647	4,421	4,060	3,980	3,816	3,820	3,804
Employment-population ratio .....	32.4	28.0	28.1	33.7	31.2	30.6	29.3	29.4	29.3
Unemployed .....	886	1,088	1,004	1,033	1,303	1,212	1,279	1,142	1,174
Unemployment rate .....	17.3	23.0	21.6	18.9	24.3	23.3	25.1	23.0	23.6
<b>BLACK OR AFRICAN AMERICAN</b>									
Civilian noninstitutional population .....	28,059	28,404	28,437	28,059	28,290	28,330	28,369	28,404	28,437
Civilian labor force .....	17,720	17,606	17,484	17,797	17,596	17,455	17,516	17,660	17,600
Participation rate .....	63.2	62.0	61.5	63.4	62.2	61.6	61.7	62.2	61.9
Employed .....	15,649	14,938	14,759	15,646	14,914	14,754	14,763	14,904	14,758
Employment-population ratio .....	55.8	52.6	51.9	55.8	52.7	52.1	52.0	52.5	51.9
Unemployed .....	2,071	2,667	2,725	2,150	2,682	2,701	2,754	2,757	2,843
Unemployment rate .....	11.7	15.2	15.6	12.1	15.2	15.5	15.7	15.6	16.2
Not in labor force .....	10,339	10,798	10,953	10,262	10,694	10,875	10,853	10,744	10,837
<b>Men, 20 years and over</b>									
Civilian labor force .....	7,981	7,911	7,896	7,997	7,913	7,820	7,899	7,915	7,907
Participation rate .....	70.7	69.0	68.7	70.8	69.4	68.4	69.0	69.0	68.8
Employed .....	6,879	6,637	6,579	6,896	6,569	6,526	6,553	6,584	6,591
Employment-population ratio .....	60.9	57.9	57.3	61.1	57.6	57.1	57.2	57.4	57.4
Unemployed .....	1,102	1,274	1,317	1,101	1,344	1,294	1,346	1,331	1,316
Unemployment rate .....	13.8	16.1	16.7	13.8	17.0	16.5	17.0	16.8	16.6
<b>Women, 20 years and over</b>									
Civilian labor force .....	9,031	8,999	8,891	9,076	8,976	8,947	8,911	9,001	8,959
Participation rate .....	64.2	63.1	62.2	64.5	63.2	62.9	62.5	63.1	62.7
Employed .....	8,264	7,942	7,786	8,267	7,885	7,827	7,800	7,946	7,788
Employment-population ratio .....	58.7	55.7	54.5	58.7	55.5	55.0	54.8	55.7	54.5
Unemployed .....	767	1,057	1,105	809	1,091	1,120	1,110	1,055	1,171
Unemployment rate .....	8.5	11.7	12.4	8.9	12.2	12.5	12.5	11.7	13.1
<b>Both sexes, 16 to 19 years</b>									
Civilian labor force .....	708	696	698	724	708	688	707	743	734
Participation rate .....	26.3	26.0	26.2	26.9	26.4	25.7	26.4	27.8	27.5
Employed .....	506	359	394	483	460	401	409	373	379
Employment-population ratio .....	18.8	13.4	14.8	18.0	17.2	15.0	15.3	14.0	14.2
Unemployed .....	202	337	303	241	247	287	298	370	356
Unemployment rate .....	28.5	48.4	43.5	33.3	35.0	41.7	42.1	49.8	48.4

See footnotes at end of table.

Table A-2. Employment status of the civilian population by race, sex, and age — Continued

(Numbers in thousands)

Employment status, race, sex, and age	Not seasonally adjusted			Seasonally adjusted <sup>1</sup>					
	Dec. 2008	Nov. 2009	Dec. 2009	Dec. 2008	Aug. 2009	Sept. 2009	Oct. 2009	Nov. 2009	Dec. 2009
<b>ASIAN</b>									
Civilian noninstitutional population .....	10,873	10,879	10,904	(2)	(2)	(2)	(2)	(2)	(2)
Civilian labor force .....	7,223	7,080	7,163	(2)	(2)	(2)	(2)	(2)	(2)
Participation rate .....	66.4	65.1	65.7	(2)	(2)	(2)	(2)	(2)	(2)
Employed .....	6,857	6,566	6,560	(2)	(2)	(2)	(2)	(2)	(2)
Employment-population ratio .....	63.1	60.4	60.2	(2)	(2)	(2)	(2)	(2)	(2)
Unemployed .....	365	514	602	(2)	(2)	(2)	(2)	(2)	(2)
Unemployment rate .....	5.1	7.3	8.4	(2)	(2)	(2)	(2)	(2)	(2)
Not in labor force .....	3,651	3,799	3,741	(2)	(2)	(2)	(2)	(2)	(2)

<sup>1</sup> The population figures are not adjusted for seasonal variation; therefore, identical numbers appear in the unadjusted and seasonally adjusted columns.

<sup>2</sup> Data not available.

NOTE: Estimates for the above race groups will not sum to totals shown in table A-1 because data are not presented for all races. Updated population controls are introduced annually with the release of January data.

Table A-3. Employment status of the Hispanic or Latino population by sex and age

(Numbers in thousands)

Employment status, sex, and age	Not seasonally adjusted			Seasonally adjusted <sup>1</sup>					
	Dec. 2008	Nov. 2009	Dec. 2009	Dec. 2008	Aug. 2009	Sept. 2009	Oct. 2009	Nov. 2009	Dec. 2009
<b>HISPANIC OR LATINO ETHNICITY</b>									
Civilian noninstitutional population .....	32,649	33,291	33,379	32,649	33,017	33,110	33,202	33,291	33,379
Civilian labor force .....	22,221	22,622	22,481	22,145	22,320	22,444	22,492	22,564	22,404
Participation rate .....	68.1	68.0	67.3	67.8	67.6	67.8	67.7	67.8	67.1
Employed .....	20,129	19,860	19,591	20,056	19,411	19,595	19,553	19,692	19,513
Employment-population ratio .....	61.7	59.7	58.7	61.4	58.8	59.2	58.9	59.2	58.5
Unemployed .....	2,093	2,762	2,890	2,089	2,908	2,849	2,939	2,872	2,891
Unemployment rate .....	9.4	12.2	12.9	9.4	13.0	12.7	13.1	12.7	12.9
Not in labor force .....	10,428	10,669	10,899	10,505	10,697	10,666	10,710	10,727	10,976
<b>Men, 20 years and over</b>									
Civilian labor force .....	12,752	12,862	12,804	(2)	(2)	(2)	(2)	(2)	(2)
Participation rate .....	83.8	83.0	82.4	(2)	(2)	(2)	(2)	(2)	(2)
Employed .....	11,558	11,374	11,168	(2)	(2)	(2)	(2)	(2)	(2)
Employment-population ratio .....	76.0	73.4	71.9	(2)	(2)	(2)	(2)	(2)	(2)
Unemployed .....	1,194	1,488	1,636	(2)	(2)	(2)	(2)	(2)	(2)
Unemployment rate .....	9.4	11.6	12.8	(2)	(2)	(2)	(2)	(2)	(2)
<b>Women, 20 years and over</b>									
Civilian labor force .....	8,430	8,767	8,720	(2)	(2)	(2)	(2)	(2)	(2)
Participation rate .....	58.8	59.9	59.4	(2)	(2)	(2)	(2)	(2)	(2)
Employed .....	7,765	7,838	7,806	(2)	(2)	(2)	(2)	(2)	(2)
Employment-population ratio .....	54.2	53.5	53.2	(2)	(2)	(2)	(2)	(2)	(2)
Unemployed .....	665	929	915	(2)	(2)	(2)	(2)	(2)	(2)
Unemployment rate .....	7.9	10.6	10.5	(2)	(2)	(2)	(2)	(2)	(2)
<b>Both sexes, 16 to 19 years</b>									
Civilian labor force .....	1,039	993	956	(2)	(2)	(2)	(2)	(2)	(2)
Participation rate .....	33.5	31.5	30.3	(2)	(2)	(2)	(2)	(2)	(2)
Employed .....	805	649	617	(2)	(2)	(2)	(2)	(2)	(2)
Employment-population ratio .....	26.0	20.6	19.5	(2)	(2)	(2)	(2)	(2)	(2)
Unemployed .....	234	344	340	(2)	(2)	(2)	(2)	(2)	(2)
Unemployment rate .....	22.6	34.7	35.5	(2)	(2)	(2)	(2)	(2)	(2)

<sup>1</sup> The population figures are not adjusted for seasonal variation; therefore, identical numbers appear in the unadjusted and seasonally adjusted columns.

<sup>2</sup> Data not available.

NOTE: Persons whose ethnicity is identified as Hispanic or Latino may be of any race. Updated population controls are introduced annually with the release of January data.

Table A-4. Employment status of the civilian population 25 years and over by educational attainment

(Numbers in thousands)

Educational attainment	Not seasonally adjusted			Seasonally adjusted					
	Dec. 2008	Nov. 2009	Dec. 2009	Dec. 2008	Aug. 2009	Sept. 2009	Oct. 2009	Nov. 2009	Dec. 2009
<b>Less than a high school diploma</b>									
Civilian labor force .....	12,136	11,929	12,015	12,112	12,323	12,263	12,155	12,003	11,977
Participation rate .....	46.5	46.0	45.7	46.4	47.4	47.1	47.2	46.3	45.6
Employed .....	10,719	10,207	10,123	10,749	10,414	10,426	10,272	10,202	10,144
Employment-population ratio .....	41.1	39.4	38.5	41.2	40.0	40.0	39.9	39.3	38.6
Unemployed .....	1,417	1,722	1,892	1,362	1,909	1,837	1,883	1,802	1,833
Unemployment rate .....	11.7	14.4	15.7	11.2	15.5	15.0	15.5	15.0	15.3
<b>High school graduates, no college <sup>1</sup></b>									
Civilian labor force .....	38,838	38,013	37,808	38,588	38,073	38,059	37,917	37,759	37,607
Participation rate .....	62.7	62.0	61.7	62.3	61.9	62.0	61.8	61.6	61.4
Employed .....	35,815	34,249	33,803	35,596	34,324	33,956	33,674	33,851	33,649
Employment-population ratio .....	57.9	55.9	55.2	57.5	55.8	55.3	54.9	55.2	55.0
Unemployed .....	3,023	3,764	4,005	2,992	3,749	4,104	4,243	3,908	3,958
Unemployment rate .....	7.8	9.9	10.6	7.8	9.8	10.8	11.2	10.4	10.5
<b>Some college or associate degree</b>									
Civilian labor force .....	36,867	37,228	36,796	36,939	36,667	36,732	36,899	36,946	36,892
Participation rate .....	71.7	70.9	70.4	71.8	71.3	70.7	70.9	70.4	70.6
Employed .....	34,819	34,099	33,660	34,773	33,645	33,583	33,596	33,629	33,560
Employment-population ratio .....	67.7	65.0	64.4	67.6	65.4	64.6	64.5	64.1	64.2
Unemployed .....	2,048	3,128	3,135	2,166	3,022	3,149	3,303	3,318	3,332
Unemployment rate .....	5.6	8.4	8.5	5.9	8.2	8.6	9.0	9.0	9.0
<b>Bachelor's degree and higher <sup>2</sup></b>									
Civilian labor force .....	45,202	45,981	45,927	45,216	45,817	45,910	46,316	45,992	45,994
Participation rate .....	77.9	77.4	77.2	78.0	77.0	77.3	77.4	77.4	77.3
Employed .....	43,619	43,888	43,752	43,544	43,650	43,686	44,116	43,743	43,707
Employment-population ratio .....	75.2	73.9	73.5	75.1	73.4	73.6	73.7	73.6	73.4
Unemployed .....	1,583	2,093	2,175	1,672	2,167	2,224	2,200	2,249	2,288
Unemployment rate .....	3.5	4.6	4.7	3.7	4.7	4.8	4.7	4.9	5.0

<sup>1</sup> Includes persons with a high school diploma or equivalent.<sup>2</sup> Includes persons with bachelor's, master's, professional, and doctoral degrees.

NOTE: Updated population controls are introduced annually with the release of January data.



Table A-5. Employed persons by class of worker and part-time status

(In thousands)

Category	Not seasonally adjusted			Seasonally adjusted					
	Dec. 2008	Nov. 2009	Dec. 2009	Dec. 2008	Aug. 2009	Sept. 2009	Oct. 2009	Nov. 2009	Dec. 2009
<b>CLASS OF WORKER</b>									
Agriculture and related industries .....	2,068	2,039	1,952	2,185	2,095	2,009	2,041	2,086	2,056
Wage and salary workers .....	1,162	1,281	1,228	1,242	1,252	1,177	1,263	1,331	1,308
Self-employed workers .....	883	740	707	943	821	796	736	752	755
Unpaid family workers .....	23	18	17	( <sup>1</sup> )	( <sup>1</sup> )	( <sup>1</sup> )	( <sup>1</sup> )	( <sup>1</sup> )	( <sup>1</sup> )
Nonagricultural industries .....	141,282	137,093	136,001	140,975	137,285	136,752	136,311	136,357	135,717
Wage and salary workers .....	132,518	128,049	127,003	132,022	128,168	127,650	127,312	127,160	126,539
Government .....	21,415	21,466	21,128	21,393	21,124	20,978	21,161	21,233	21,110
Private industries .....	111,103	106,583	105,875	110,629	107,094	106,662	106,173	105,856	105,428
Private households .....	782	776	736	( <sup>1</sup> )	( <sup>1</sup> )	( <sup>1</sup> )	( <sup>1</sup> )	( <sup>1</sup> )	( <sup>1</sup> )
Other industries .....	110,321	105,807	105,139	109,816	106,273	105,885	105,401	105,097	104,666
Self-employed workers .....	8,701	8,973	8,915	8,915	9,032	9,009	8,960	9,111	9,135
Unpaid family workers .....	62	72	83	( <sup>1</sup> )	( <sup>1</sup> )	( <sup>1</sup> )	( <sup>1</sup> )	( <sup>1</sup> )	( <sup>1</sup> )
<b>PERSONS AT WORK PART TIME <sup>2</sup></b>									
All industries:									
Part time for economic reasons .....	8,250	8,894	9,354	8,090	9,077	9,158	9,240	9,225	9,165
Slack work or business conditions .....	6,340	6,524	6,758	6,068	6,895	6,815	6,882	6,684	6,453
Could only find part-time work .....	1,562	2,132	2,286	1,617	2,065	2,081	2,084	2,238	2,346
Part time for noneconomic reasons .....	19,719	19,208	19,082	18,964	18,768	18,590	18,632	18,354	18,364
Nonagricultural industries:									
Part time for economic reasons .....	8,110	8,796	9,222	7,972	8,946	8,983	9,158	9,137	9,055
Slack work or business conditions .....	6,250	6,446	6,672	5,990	6,797	6,695	6,797	6,616	6,378
Could only find part-time work .....	1,553	2,124	2,267	1,616	2,046	2,063	2,033	2,241	2,349
Part time for noneconomic reasons .....	19,405	18,871	18,740	18,647	18,383	18,251	18,317	18,066	18,056

<sup>1</sup> Data not available.

<sup>2</sup> Persons at work excludes employed persons who were absent from their jobs during the entire reference week for reasons such as vacation, illness, or industrial dispute. Part time for noneconomic reasons excludes persons who usually work full time but worked only 1 to 34 hours during the reference week for

reasons such as holidays, illness, and bad weather.

NOTE: Detail for the seasonally adjusted data shown in this table will not necessarily add to totals because of the independent seasonal adjustment of the various series. Updated population controls are introduced annually with the release of January data.

Table A-6. Selected employment indicators

(In thousands)

Characteristic	Not seasonally adjusted			Seasonally adjusted					
	Dec. 2008	Nov. 2009	Dec. 2009	Dec. 2008	Aug. 2009	Sept. 2009	Oct. 2009	Nov. 2009	Dec. 2009
<b>AGE AND SEX</b>									
Total, 16 years and over .....	143,350	139,132	137,953	143,188	139,433	138,768	138,242	138,381	137,792
16 to 19 years .....	5,058	4,233	4,272	5,207	4,740	4,627	4,448	4,450	4,403
16 to 17 years .....	1,743	1,349	1,381	1,794	1,694	1,569	1,417	1,409	1,425
18 to 19 years .....	3,314	2,884	2,891	3,420	3,043	3,070	3,041	3,036	2,987
20 years and over .....	138,292	134,899	133,680	137,981	134,693	134,141	133,795	133,931	133,389
20 to 24 years .....	13,320	12,456	12,343	13,366	12,714	12,625	12,414	12,446	12,389
25 years and over .....	124,972	122,443	121,337	124,638	122,042	121,551	121,440	121,539	121,012
25 to 54 years .....	97,781	95,033	94,030	97,537	94,903	94,345	94,272	94,318	93,791
25 to 34 years .....	30,885	30,072	29,875	30,807	29,951	29,795	29,811	29,793	29,794
35 to 44 years .....	32,731	31,209	30,831	32,639	31,444	31,236	30,966	31,031	30,744
45 to 54 years .....	34,165	33,753	33,325	34,091	33,507	33,314	33,495	33,494	33,254
55 years and over .....	27,191	27,410	27,307	27,102	27,140	27,206	27,168	27,221	27,221
Men, 16 years and over .....	75,548	73,107	72,258	75,812	73,436	73,120	72,844	72,794	72,499
16 to 19 years .....	2,460	1,996	2,008	2,575	2,294	2,259	2,182	2,131	2,108
16 to 17 years .....	797	619	618	860	833	762	688	673	672
18 to 19 years .....	1,663	1,377	1,389	1,711	1,464	1,500	1,485	1,453	1,434
20 years and over .....	73,088	71,112	70,251	73,237	71,142	70,861	70,662	70,662	70,391
20 to 24 years .....	6,760	6,291	6,127	6,868	6,483	6,402	6,257	6,301	6,234
25 years and over .....	66,328	64,821	64,124	66,383	64,685	64,466	64,449	64,375	64,166
25 to 54 years .....	52,031	50,450	49,905	52,059	50,501	50,203	50,222	50,090	49,921
25 to 34 years .....	16,784	16,316	16,146	16,758	16,219	16,120	16,203	16,157	16,118
35 to 44 years .....	17,581	16,819	16,615	17,601	16,822	16,758	16,642	16,719	16,629
45 to 54 years .....	17,666	17,314	17,144	17,700	17,460	17,325	17,376	17,214	17,174
55 years and over .....	14,297	14,371	14,219	14,324	14,184	14,263	14,227	14,285	14,245
Women, 16 years and over .....	67,802	66,024	65,694	67,376	65,997	65,648	65,398	65,587	65,293
16 to 19 years .....	2,598	2,238	2,265	2,632	2,446	2,368	2,266	2,318	2,294
16 to 17 years .....	946	730	763	933	861	807	728	736	753
18 to 19 years .....	1,651	1,507	1,502	1,709	1,579	1,570	1,555	1,583	1,553
20 years and over .....	65,204	63,787	63,430	64,744	63,552	63,280	63,133	63,269	62,998
20 to 24 years .....	6,560	6,165	6,216	6,498	6,231	6,222	6,158	6,145	6,155
25 years and over .....	58,644	57,622	57,213	58,255	57,358	57,085	56,992	57,164	56,846
25 to 54 years .....	45,750	44,583	44,125	45,478	44,402	44,142	44,050	44,229	43,870
25 to 34 years .....	14,101	13,755	13,728	14,048	13,732	13,675	13,608	13,637	13,676
35 to 44 years .....	15,150	14,389	14,215	15,038	14,623	14,478	14,324	14,312	14,115
45 to 54 years .....	16,499	16,439	16,181	16,391	16,047	15,989	16,118	16,280	16,080
55 years and over .....	12,894	13,038	13,089	12,777	12,956	12,943	12,942	12,936	12,976
<b>MARITAL STATUS</b>									
Married men, spouse present .....	45,215	43,484	43,364	45,155	43,847	43,656	43,401	43,336	43,312
Married women, spouse present .....	35,835	35,082	35,198	35,622	35,151	34,891	34,736	34,867	35,004
Women who maintain families .....	8,987	8,798	8,403	( <sup>1</sup> )	( <sup>1</sup> )	( <sup>1</sup> )	( <sup>1</sup> )	( <sup>1</sup> )	( <sup>1</sup> )
<b>FULL- OR PART-TIME STATUS</b>									
Full-time workers <sup>2</sup> .....	116,422	111,274	109,875	116,832	112,117	111,361	110,817	110,901	110,254
Part-time workers <sup>3</sup> .....	26,927	27,858	28,078	26,362	27,636	27,459	27,511	27,400	27,466
<b>MULTIPLE JOBHOLDERS</b>									
Total multiple jobholders .....	7,432	7,222	6,886	7,433	7,079	7,047	7,017	7,060	6,910
Percent of total employed .....	5.2	5.2	5.0	5.2	5.1	5.1	5.1	5.1	5.0

<sup>1</sup> Data not available.<sup>2</sup> Employed full-time workers are persons who usually work 35 hours or more per week.<sup>3</sup> Employed part-time workers are persons who usually work less than 35 hours per week.

NOTE: Detail for the seasonally adjusted data shown in this table will not necessarily add to totals because of the independent seasonal adjustment of the various series. Updated population controls are introduced annually with the release of January data.

Table A-7. Selected unemployment indicators, seasonally adjusted

Characteristic	Number of unemployed persons (in thousands)			Unemployment rates <sup>1</sup>					
	Dec. 2008	Nov. 2009	Dec. 2009	Dec. 2008	Aug. 2009	Sept. 2009	Oct. 2009	Nov. 2009	Dec. 2009
<b>AGE AND SEX</b>									
Total, 16 years and over .....	11,400	15,340	15,267	7.4	9.7	9.8	10.1	10.0	10.0
16 to 19 years .....	1,368	1,627	1,634	20.8	25.7	26.1	27.6	26.8	27.1
16 to 17 years .....	558	569	608	23.7	26.5	28.2	30.2	28.8	29.9
18 to 19 years .....	821	1,071	1,041	19.4	25.2	24.4	25.7	26.1	25.8
20 years and over .....	10,031	13,712	13,633	6.8	9.0	9.2	9.4	9.3	9.3
20 to 24 years .....	1,890	2,361	2,287	12.4	15.1	15.0	15.6	15.9	15.6
25 years and over .....	8,095	11,264	11,237	6.1	8.4	8.6	8.7	8.5	8.5
25 to 54 years .....	6,691	9,171	9,176	6.4	8.8	9.1	9.2	8.9	8.9
25 to 34 years .....	2,579	3,436	3,383	7.7	10.4	10.6	10.7	10.3	10.2
35 to 44 years .....	2,073	2,909	2,953	6.0	8.2	8.8	9.0	8.6	8.8
45 to 54 years .....	2,038	2,827	2,841	5.6	7.8	8.0	7.8	7.8	7.9
55 years and over .....	1,439	2,085	2,114	5.0	6.8	6.8	7.0	7.1	7.2
Men, 16 years and over .....	6,650	9,171	8,955	8.1	11.0	11.0	11.4	11.2	11.0
16 to 19 years .....	778	932	944	23.2	29.9	29.9	31.0	30.4	30.9
16 to 17 years .....	311	296	332	26.5	29.6	31.1	33.5	30.5	33.1
18 to 19 years .....	476	638	621	21.8	29.9	28.3	28.9	30.5	30.2
20 years and over .....	5,871	8,239	8,011	7.4	10.2	10.3	10.6	10.4	10.2
20 to 24 years .....	1,154	1,415	1,407	14.4	17.0	17.2	18.6	18.3	18.4
25 years and over .....	4,691	6,763	6,531	6.6	9.5	9.7	9.7	9.5	9.2
25 to 54 years .....	3,900	5,562	5,313	7.0	10.0	10.3	10.2	10.0	9.6
25 to 34 years .....	1,570	2,046	1,992	8.6	11.5	11.9	11.4	11.2	11.0
35 to 44 years .....	1,149	1,707	1,624	6.1	9.5	9.7	10.1	9.3	8.9
45 to 54 years .....	1,181	1,809	1,697	6.3	9.1	9.4	9.2	9.5	9.0
55 years and over .....	791	1,201	1,217	5.2	7.5	7.3	7.8	7.8	7.9
Women, 16 years and over .....	4,750	6,169	6,312	6.6	8.3	8.5	8.8	8.6	8.8
16 to 19 years .....	590	695	690	18.3	21.4	22.2	24.0	23.1	23.1
16 to 17 years .....	247	274	275	20.9	23.3	25.1	26.8	27.1	26.8
18 to 19 years .....	345	433	420	16.8	20.2	20.2	22.4	21.5	21.3
20 years and over .....	4,160	5,473	5,622	6.0	7.7	7.9	8.1	8.0	8.2
20 to 24 years .....	736	946	880	10.2	13.1	12.7	12.4	13.3	12.5
25 years and over .....	3,404	4,501	4,706	5.5	7.1	7.3	7.6	7.3	7.6
25 to 54 years .....	2,791	3,610	3,863	5.8	7.3	7.7	8.0	7.5	8.1
25 to 34 years .....	1,009	1,390	1,391	6.7	9.1	8.9	9.9	9.3	9.2
35 to 44 years .....	925	1,202	1,328	5.8	6.6	7.9	7.8	7.7	8.6
45 to 54 years .....	857	1,018	1,144	5.0	6.3	6.5	6.4	5.9	6.6
55 years and over <sup>2</sup> .....	583	859	800	4.3	6.7	6.3	6.1	6.2	5.8
<b>MARITAL STATUS</b>									
Married men, spouse present .....	2,198	3,517	3,419	4.6	7.1	7.3	7.5	7.5	7.3
Married women, spouse present .....	1,711	2,105	2,154	4.6	5.5	5.8	5.9	5.7	5.8
Women who maintain families <sup>2</sup> .....	948	1,131	1,258	9.5	12.2	11.6	12.9	11.4	13.0
<b>FULL- OR PART-TIME STATUS</b>									
Full-time workers <sup>3</sup> .....	9,715	13,699	13,452	7.7	10.5	10.7	11.1	11.0	10.9
Part-time workers <sup>4</sup> .....	1,639	1,626	1,766	5.9	6.3	6.4	6.1	5.6	6.0

<sup>1</sup> Unemployment as a percent of the civilian labor force.<sup>2</sup> Not seasonally adjusted.<sup>3</sup> Full-time workers are unemployed persons who have expressed a desire to work full time (35 hours or more per week) or are on layoff from full-time jobs.<sup>4</sup> Part-time workers are unemployed persons who have expressed a desire to

work part time (less than 35 hours per week) or are on layoff from part-time jobs.

NOTE: Detail for the seasonally adjusted data shown in this table will not necessarily add to totals because of the independent seasonal adjustment of the various series. Updated population controls are introduced annually with the release of January data.

Table A-8. Unemployed persons by reason for unemployment

(Numbers in thousands)

Reason	Not seasonally adjusted			Seasonally adjusted					
	Dec. 2008	Nov. 2009	Dec. 2009	Dec. 2008	Aug. 2009	Sept. 2009	Oct. 2009	Nov. 2009	Dec. 2009
<b>NUMBER OF UNEMPLOYED</b>									
Job losers and persons who completed temporary jobs	6,878	9,130	9,822	6,729	9,814	10,236	10,261	9,965	9,701
On temporary layoff .....	1,675	1,245	1,683	1,550	1,704	1,918	1,671	1,548	1,558
Not on temporary layoff .....	5,203	7,884	8,140	5,179	8,110	8,318	8,590	8,418	8,143
Permanent job losers .....	4,034	6,515	6,718	( <sup>1</sup> )	( <sup>1</sup> )	( <sup>1</sup> )	( <sup>1</sup> )	( <sup>1</sup> )	( <sup>1</sup> )
Persons who completed temporary jobs .....	1,169	1,369	1,422	( <sup>1</sup> )	( <sup>1</sup> )	( <sup>1</sup> )	( <sup>1</sup> )	( <sup>1</sup> )	( <sup>1</sup> )
Job leavers .....	928	921	860	1,007	835	869	909	929	932
Reentrants .....	2,523	3,158	3,012	2,802	3,294	3,255	3,461	3,221	3,334
New entrants .....	670	1,198	1,046	820	1,096	1,134	1,114	1,270	1,270
<b>PERCENT DISTRIBUTION</b>									
Total unemployed .....	100.0	100.0	100.0	100.0	100.0	100.0	100.0	100.0	100.0
Job losers and persons who completed temporary jobs .....	62.5	63.4	66.6	59.2	65.3	66.1	65.2	64.8	63.7
On temporary layoff .....	15.2	8.6	11.4	13.6	11.3	12.4	10.6	10.1	10.2
Not on temporary layoff .....	47.3	54.7	55.2	45.6	53.9	53.7	54.6	54.7	53.4
Job leavers .....	8.4	6.4	5.8	8.9	5.6	5.6	5.8	6.0	6.1
Reentrants .....	22.9	21.9	20.4	24.7	21.9	21.0	22.0	20.9	21.9
New entrants .....	6.1	8.3	7.1	7.2	7.3	7.3	7.1	8.3	8.3
<b>UNEMPLOYED AS A PERCENT OF THE CIVILIAN LABOR FORCE</b>									
Job losers and persons who completed temporary jobs .....	4.5	5.9	6.4	4.4	6.4	6.6	6.7	6.5	6.3
Job leavers .....	.6	.6	.6	.7	.5	.6	.6	.6	.6
Reentrants .....	1.6	2.1	2.0	1.8	2.1	2.1	2.2	2.1	2.2
New entrants .....	.4	.8	.7	.5	.7	.7	.7	.8	.8

<sup>1</sup> Data not available.

NOTE: Updated population controls are introduced annually with the release of January data.

Table A-9. Unemployed persons by duration of unemployment

(Numbers in thousands)

Duration	Not seasonally adjusted			Seasonally adjusted					
	Dec. 2008	Nov. 2009	Dec. 2009	Dec. 2008	Aug. 2009	Sept. 2009	Oct. 2009	Nov. 2009	Dec. 2009
<b>NUMBER OF UNEMPLOYED</b>									
Less than 5 weeks .....	3,227	2,583	2,871	3,294	2,992	2,938	3,131	2,774	2,929
5 to 14 weeks .....	3,390	3,296	3,335	3,535	4,093	3,838	3,671	3,517	3,486
15 weeks and over .....	4,381	8,528	8,534	4,599	7,849	8,405	8,804	8,976	8,969
15 to 26 weeks .....	1,869	2,678	2,638	1,987	2,825	2,958	3,184	3,075	2,840
27 weeks and over .....	2,512	5,849	5,896	2,612	5,024	5,447	5,620	5,901	6,130
Average (mean) duration, in weeks .....	19.5	29.4	29.0	19.6	25.2	26.5	27.2	28.6	29.1
Median duration, in weeks .....	10.5	20.2	20.2	10.7	15.5	17.8	19.0	20.2	20.5
<b>PERCENT DISTRIBUTION</b>									
Total unemployed .....	100.0	100.0	100.0	100.0	100.0	100.0	100.0	100.0	100.0
Less than 5 weeks .....	29.3	17.9	19.5	28.8	20.0	19.4	20.1	18.2	19.0
5 to 14 weeks .....	30.8	22.9	22.6	30.9	27.4	25.3	23.5	23.0	22.7
15 weeks and over .....	39.8	59.2	57.9	40.2	52.6	55.4	56.4	58.8	58.3
15 to 26 weeks .....	17.0	18.6	17.9	17.4	18.9	19.5	20.4	20.1	18.5
27 weeks and over .....	22.8	40.6	40.0	22.9	33.6	35.9	36.0	38.7	39.8

NOTE: Updated population controls are introduced annually with the release of January data.

Table A-10. Employed and unemployed persons by occupation, not seasonally adjusted

(Numbers in thousands)

Occupation	Employed		Unemployed		Unemployment rates	
	Dec. 2008	Dec. 2009	Dec. 2008	Dec. 2009	Dec. 2008	Dec. 2009
Total, 16 years and over <sup>1</sup> .....	143,350	137,953	10,999	14,740	7.1	9.7
Management, professional, and related occupations .....	52,548	52,131	1,802	2,509	3.3	4.6
Management, business, and financial operations occupations .....	21,928	20,944	888	1,157	3.9	5.2
Professional and related occupations .....	30,619	31,188	915	1,352	2.9	4.2
Service occupations .....	24,371	24,216	2,057	2,747	7.8	10.2
Sales and office occupations .....	34,987	33,296	2,448	3,184	6.5	8.7
Sales and related occupations .....	16,354	15,478	1,233	1,520	7.0	8.9
Office and administrative support occupations .....	18,633	17,819	1,215	1,664	6.1	8.5
Natural resources, construction, and maintenance occupations .....	14,202	12,617	2,063	2,802	12.7	18.2
Farming, fishing, and forestry occupations .....	901	869	201	242	18.3	21.8
Construction and extraction occupations .....	8,025	7,106	1,522	2,067	15.9	22.5
Installation, maintenance, and repair occupations .....	5,276	4,642	339	494	6.0	9.6
Production, transportation, and material moving occupations .....	17,242	15,692	1,928	2,425	10.1	13.4
Production occupations .....	8,421	7,420	992	1,281	10.5	14.7
Transportation and material moving occupations .....	8,821	8,272	936	1,144	9.6	12.2

<sup>1</sup> Persons with no previous work experience and persons whose last job was in the Armed Forces are included in the unemployed total.

NOTE: Updated population controls are introduced annually with the release of January data.

Table A-11. Unemployed persons by industry and class of worker, not seasonally adjusted

Industry and class of worker	Number of unemployed persons (in thousands)		Unemployment rates	
	Dec. 2008	Dec. 2009	Dec. 2008	Dec. 2009
Total, 16 years and over <sup>1</sup> .....	10,999	14,740	7.1	9.7
Nonagricultural private wage and salary workers .....	9,030	11,997	7.5	10.2
Mining, quarrying, and oil and gas extraction .....	46	89	5.2	11.8
Construction .....	1,438	2,044	15.3	22.7
Manufacturing .....	1,315	1,747	8.3	11.9
Durable goods .....	839	1,245	8.0	13.3
Nondurable goods .....	477	502	8.8	9.5
Wholesale and retail trade .....	1,535	1,851	7.2	9.1
Transportation and utilities .....	421	539	6.7	9.0
Information .....	219	256	6.9	8.5
Financial activities .....	540	665	5.6	7.2
Professional and business services .....	1,147	1,486	8.1	10.3
Education and health services .....	791	1,183	3.8	5.6
Leisure and hospitality .....	1,210	1,624	9.5	12.6
Other services .....	367	513	6.1	8.2
Agriculture and related private wage and salary workers .....	229	292	17.0	19.7
Government workers .....	511	797	2.3	3.6
Self employed and unpaid family workers .....	559	609	5.5	5.9

<sup>1</sup> Persons with no previous work experience are included in the unemployed total.

NOTE: Updated population controls are introduced annually with the release of January data. Effective with January 2009 data, industries reflect the introduction of the 2007 Census industry classification system into the Current Population Survey. This industry classification system is derived from the 2007 North American Industry Classification System. No historical data have been revised.

Table A-12. Alternative measures of labor underutilization

(Percent)

Measure	Not seasonally adjusted			Seasonally adjusted					
	Dec. 2008	Nov. 2009	Dec. 2009	Dec. 2008	Aug. 2009	Sept. 2009	Oct. 2009	Nov. 2009	Dec. 2009
U-1 Persons unemployed 15 weeks or longer, as a percent of the civilian labor force .....	2.8	5.6	5.6	3.0	5.1	5.5	5.7	5.8	5.9
U-2 Job losers and persons who completed temporary jobs, as a percent of the civilian labor force .....	4.5	5.9	6.4	4.4	6.4	6.6	6.7	6.5	6.3
<b>U-3 Total unemployed, as a percent of the civilian labor force (official unemployment rate) .....</b>	<b>7.1</b>	<b>9.4</b>	<b>9.7</b>	<b>7.4</b>	<b>9.7</b>	<b>9.8</b>	<b>10.1</b>	<b>10.0</b>	<b>10.0</b>
U-4 Total unemployed plus discouraged workers, as a percent of the civilian labor force plus discouraged workers .....	7.5	9.9	10.2	7.8	10.1	10.3	10.6	10.5	10.5
U-5 Total unemployed, plus discouraged workers, plus all other marginally attached workers, as a percent of the civilian labor force plus all marginally attached workers .....	8.3	10.7	11.1	8.5	11.0	11.1	11.5	11.3	11.4
U-6 Total unemployed, plus all marginally attached workers, plus total employed part time for economic reasons, as a percent of the civilian labor force plus all marginally attached workers .....	13.5	16.4	17.1	13.7	16.8	17.0	17.4	17.2	17.3

NOTE: Marginally attached workers are persons who currently are neither working nor looking for work but indicate that they want and are available for a job and have looked for work sometime in the recent past. Discouraged workers, a subset of the marginally attached, have given a job-market related reason for not looking currently for a job. Persons employed part time for economic reasons are

those who want and are available for full-time work but have had to settle for a part-time schedule. For more information, see "BLS introduces new range of alternative unemployment measures," in the October 1995 issue of the Monthly Labor Review. Updated population controls are introduced annually with the release of January data.

Table A-13. Persons not in the labor force and multiple jobholders by sex, not seasonally adjusted

(Numbers in thousands)

Category	Total		Men		Women	
	Dec. 2008	Dec. 2009	Dec. 2008	Dec. 2009	Dec. 2008	Dec. 2009
<b>NOT IN THE LABOR FORCE</b>						
Total not in the labor force .....	80,686	84,231	31,543	33,485	49,143	50,747
Persons who currently want a job .....	5,180	5,939	2,432	2,896	2,748	3,043
Marginally attached to the labor force <sup>1</sup> .....	1,908	2,486	1,000	1,384	908	1,102
Reason not currently looking:						
Discouragement over job prospects <sup>2</sup> .....	642	929	367	594	276	334
Reasons other than discouragement <sup>3</sup> .....	1,266	1,558	634	790	632	768
<b>MULTIPLE JOBHOLDERS</b>						
Total multiple jobholders <sup>4</sup> .....	7,432	6,886	3,743	3,369	3,689	3,517
Percent of total employed .....	5.2	5.0	5.0	4.7	5.4	5.4
Primary job full time, secondary job part time .....	4,176	3,641	2,288	2,010	1,888	1,632
Primary and secondary jobs both part time .....	1,774	1,818	638	549	1,136	1,268
Primary and secondary jobs both full time .....	218	202	143	123	75	79
Hours vary on primary or secondary job .....	1,215	1,198	653	670	562	528

<sup>1</sup> Data refer to persons who have searched for work during the prior 12 months and were available to take a job during the reference week.

<sup>2</sup> Includes thinks no work available, could not find work, lacks schooling or training, employer thinks too young or old, and other types of discrimination.

<sup>3</sup> Includes those who did not actively look for work in the prior 4 weeks for such reasons as school or family responsibilities, ill health, and transportation problems, as

well as a small number for which reason for nonparticipation was not determined.

<sup>4</sup> Includes persons who work part time on their primary job and full time on their secondary job(s), not shown separately.

NOTE: Updated population controls are introduced annually with the release of January data.

Table B-1. Employees on nonfarm payrolls by industry sector and selected industry detail

(In thousands)

Industry	Not seasonally adjusted				Seasonally adjusted							Change from: Nov. 2009-Dec. 2009 <sup>P</sup>
	Dec. 2008	Oct. 2009	Nov. 2009 <sup>P</sup>	Dec. 2009 <sup>P</sup>	Dec. 2008	Aug. 2009	Sept. 2009	Oct. 2009	Nov. 2009 <sup>P</sup>	Dec. 2009 <sup>P</sup>		
Total nonfarm .....	135,917	132,113	132,227	131,821	135,074	131,257	131,118	130,991	130,995	130,910	-85	
Total private .....	113,023	109,249	109,261	109,005	112,542	108,770	108,670	108,507	108,507	108,443	-64	
Goods-producing .....	20,469	18,700	18,538	18,221	20,532	18,583	18,488	18,379	18,321	18,240	-81	
Mining and logging .....	786	708	712	705	789	706	705	700	704	703	-1	
Logging .....	56.1	52.8	52.8	51.4	55.7	51.2	51.9	50.5	50.7	50.4	-3	
Mining .....	730.3	655.6	659.1	653.2	733.3	655.1	653.2	649.9	652.8	652.7	-1	
Oil and gas extraction .....	169.3	165.2	166.6	166.2	169.4	165.2	166.1	165.4	166.2	166.2	.0	
Mining, except oil and gas <sup>1</sup> .....	225.0	217.4	217.0	209.4	229.2	214.3	214.4	212.4	213.6	212.6	-1.0	
Coal mining .....	85.1	77.5	77.4	77.0	84.5	78.9	78.5	77.3	76.9	76.4	-5	
Support activities for mining .....	336.0	273.0	275.5	277.6	334.7	275.6	272.7	272.1	273.0	273.9	.9	
Construction .....	6,739	6,217	6,093	5,826	6,841	6,096	6,043	5,987	5,960	5,907	-53	
Construction of buildings .....	1,571.6	1,421.0	1,403.8	1,369.9	1,572.9	1,406.1	1,391.9	1,381.6	1,381.1	1,369.6	-11.5	
Residential building .....	772.4	698.5	689.4	676.0	769.4	685.4	680.4	676.0	675.2	671.4	-3.8	
Nonresidential building .....	799.2	722.5	714.4	693.9	803.5	720.7	711.5	705.6	705.9	698.2	-7.7	
Heavy and civil engineering construction .....	897.0	884.0	864.0	777.9	933.2	849.2	841.2	827.0	829.0	810.6	-18.4	
Specialty trade contractors .....	4,270.1	3,912.1	3,825.6	3,678.2	4,335.2	3,840.2	3,810.0	3,778.5	3,750.1	3,726.5	-23.6	
Residential specialty trade contractors .....	1,851.1	1,739.5	1,706.7	1,638.3	1,883.6	1,691.4	1,690.3	1,681.2	1,677.7	1,662.9	-14.8	
Nonresidential specialty trade contractors .....	2,419.0	2,172.6	2,118.9	2,039.9	2,451.6	2,148.8	2,119.7	2,097.3	2,072.4	2,063.6	-8.8	
Manufacturing .....	12,944	11,775	11,733	11,690	12,902	11,781	11,740	11,692	11,657	11,630	-27	
Production workers .....	9,202	8,284	8,259	8,208	9,174	8,265	8,243	8,211	8,192	8,164	-28	
Durable goods .....	8,126	7,175	7,156	7,142	8,085	7,204	7,169	7,134	7,105	7,089	-16	
Production workers .....	5,663	4,913	4,906	4,888	5,633	4,924	4,906	4,882	4,863	4,847	-16	
Wood products .....	416.3	367.5	363.1	364.2	416.2	362.2	361.6	362.0	361.6	363.3	1.7	
Nonmetallic mineral products .....	436.6	403.3	400.7	390.9	441.2	402.6	400.9	395.7	394.5	395.1	.6	
Primary metals .....	421.4	358.5	359.4	360.5	419.6	359.3	357.3	356.8	357.0	357.6	.6	
Fabricated metal products .....	1,467.8	1,284.6	1,279.1	1,278.7	1,461.5	1,288.3	1,280.2	1,275.1	1,270.6	1,269.9	-7	
Machinery .....	1,159.2	984.7	981.2	981.6	1,150.2	997.5	989.8	981.3	974.1	969.6	-4.5	
Computer and electronic products <sup>1</sup> .....	1,227.9	1,113.0	1,110.1	1,110.7	1,223.7	1,125.6	1,120.2	1,114.3	1,108.3	1,105.9	-2.4	
Computer and peripheral equipment .....	180.7	159.2	158.6	159.0	180.0	160.5	160.4	159.1	158.1	157.7	-4	
Communications equipment .....	129.4	125.2	124.2	124.8	129.1	125.7	126.1	125.0	124.0	124.4	.4	
Semiconductors and electronic components .....	419.4	362.2	363.4	364.4	417.4	367.6	365.2	363.7	362.6	362.4	-2	
Electronic instruments .....	438.1	414.8	412.5	411.1	437.5	420.0	417.3	415.5	412.7	410.7	-2.0	
Electrical equipment and appliances .....	412.8	370.0	367.0	365.8	412.0	372.3	371.8	368.0	365.1	363.7	-1.4	
Transportation equipment <sup>1</sup> .....	1,518.5	1,333.3	1,334.5	1,335.8	1,501.8	1,330.0	1,326.9	1,326.7	1,320.1	1,315.7	-4.4	
Motor vehicles and parts <sup>2</sup> .....	797.0	671.7	674.7	674.9	781.5	661.6	660.1	664.5	660.1	655.2	-4.9	
Furniture and related products .....	441.2	371.2	372.5	371.3	440.6	378.2	374.5	371.5	372.7	370.3	-2.4	
Miscellaneous manufacturing .....	623.8	588.9	588.6	582.6	618.4	587.7	585.8	582.3	580.7	577.4	-3.3	
Nondurable goods .....	4,818	4,600	4,577	4,548	4,817	4,577	4,571	4,558	4,552	4,541	-11	
Production workers .....	3,539	3,371	3,353	3,320	3,541	3,341	3,337	3,329	3,329	3,317	-12	
Food manufacturing .....	1,482.6	1,500.6	1,484.7	1,470.4	1,477.6	1,476.4	1,476.3	1,473.9	1,471.0	1,466.9	-4.1	
Beverages and tobacco products .....	193.1	195.1	188.9	186.2	195.8	189.8	189.7	189.8	189.2	188.7	-5	
Textile mills .....	136.0	121.4	122.3	122.0	136.8	122.3	121.8	121.1	121.7	122.3	.6	
Textile product mills .....	142.2	125.6	125.4	125.8	141.2	125.5	125.8	124.7	123.7	123.7	.0	
Apparel .....	181.7	164.3	162.5	163.8	183.5	165.4	163.7	163.4	162.7	164.5	1.8	
Leather and allied products .....	32.7	29.7	29.8	29.9	32.6	30.6	30.2	29.6	29.8	29.9	.1	
Paper and paper products .....	434.6	403.1	402.9	399.4	433.4	405.7	405.4	402.1	401.0	397.8	-3.2	
Printing and related support activities .....	569.9	510.9	507.6	507.5	567.0	513.7	511.4	508.3	503.6	503.5	-1	
Petroleum and coal products .....	114.0	115.4	114.5	109.0	116.9	114.0	114.2	113.7	114.2	112.3	-1.9	
Chemicals .....	836.7	800.4	805.8	803.0	837.1	803.4	802.5	802.3	804.9	801.8	-3.1	
Plastics and rubber products .....	694.9	633.2	632.9	630.5	694.9	630.4	629.5	629.1	630.4	629.3	-1.1	

See footnotes at the end of table.



Table B-1. Employees on nonfarm payrolls by industry sector and selected industry detail—Continued

(In thousands)

Industry	Not seasonally adjusted				Seasonally adjusted						
	Dec. 2008	Oct. 2009	Nov. 2009 <sup>P</sup>	Dec. 2009 <sup>P</sup>	Dec. 2008	Aug. 2009	Sept. 2009	Oct. 2009	Nov. 2009 <sup>P</sup>	Dec. 2009 <sup>P</sup>	Change from: Nov. 2009-Dec. 2009 <sup>P</sup>
Service-providing .....	115,448	113,413	113,689	113,600	114,542	112,674	112,630	112,612	112,674	112,670	-4
Private service-providing .....	92,554	90,549	90,723	90,784	92,010	90,187	90,182	90,128	90,186	90,203	17
Trade, transportation, and utilities .....	26,475	25,134	25,447	25,587	25,843	25,146	25,090	25,031	24,999	24,962	-37
Wholesale trade .....	5,864.1	5,671.9	5,664.0	5,636.6	5,850.7	5,661.0	5,654.1	5,647.3	5,636.7	5,618.5	-18.2
Durable goods .....	2,986.0	2,824.2	2,810.5	2,795.3	2,978.6	2,828.3	2,821.2	2,813.4	2,800.1	2,786.2	-13.9
Nondurable goods .....	2,028.2	2,001.5	2,007.4	1,992.8	2,025.1	1,991.6	1,990.5	1,988.7	1,992.8	1,987.4	-5.4
Electronic markets and agents and brokers .....	849.9	846.2	846.1	848.5	847.0	841.1	842.4	845.2	843.8	844.9	1.1
Retail trade .....	15,594.7	14,675.3	15,009.0	15,168.6	15,037.9	14,726.1	14,686.4	14,646.7	14,633.2	14,623.0	-10.2
Motor vehicle and parts dealers <sup>1</sup> .....	1,728.7	1,680.2	1,661.1	1,656.0	1,745.6	1,674.7	1,668.4	1,668.4	1,667.4	1,669.8	2.4
Automobile dealers .....	1,090.3	1,048.4	1,040.9	1,037.5	1,099.9	1,045.6	1,040.7	1,041.1	1,043.0	1,045.3	2.3
Furniture and home furnishings stores .....	539.0	487.5	499.9	507.9	514.2	479.6	480.0	481.6	483.6	482.9	-7
Electronics and appliance stores .....	561.3	510.5	524.2	528.2	538.6	513.0	511.5	507.3	505.7	505.4	-3
Building material and garden supply stores .....	1,196.7	1,157.3	1,150.1	1,142.0	1,227.8	1,169.7	1,167.8	1,164.8	1,164.6	1,168.1	3.5
Food and beverage stores .....	2,867.1	2,805.9	2,827.3	2,827.0	2,835.1	2,821.4	2,813.4	2,809.9	2,801.9	2,798.1	-3.8
Health and personal care stores .....	1,009.4	978.1	985.6	998.3	991.2	982.2	976.5	978.7	976.9	980.6	3.7
Gasoline stations .....	833.1	830.5	824.2	825.2	834.4	834.4	830.1	830.5	825.6	826.1	.5
Clothing and clothing accessories stores .....	1,592.9	1,419.8	1,512.3	1,571.9	1,448.5	1,410.9	1,411.3	1,416.2	1,421.4	1,421.1	-3
Sporting goods, hobby, book, and music stores .....	682.9	593.8	619.7	639.4	624.3	601.8	604.5	589.7	586.6	586.1	-5
General merchandise stores <sup>1</sup> .....	3,271.8	2,983.6	3,158.7	3,211.1	3,029.2	3,025.7	3,019.1	2,996.1	2,999.5	2,984.7	-14.8
Department stores .....	1,700.6	1,505.7	1,636.9	1,685.9	1,521.2	1,524.2	1,524.4	1,510.2	1,515.9	1,510.3	-5.6
Miscellaneous store retailers .....	851.2	803.4	806.7	813.9	825.0	797.5	790.9	791.2	790.4	788.0	-2.4
Nonstore retailers .....	460.6	424.7	439.2	447.7	424.0	415.2	412.9	412.3	409.6	412.1	2.5
Transportation and warehousing .....	4,452.8	4,218.2	4,207.8	4,216.1	4,389.9	4,192.3	4,182.2	4,168.5	4,161.7	4,153.7	-8.0
Air transportation .....	476.5	461.3	459.1	456.7	477.8	463.5	461.7	462.0	459.5	457.2	-2.3
Rail transportation .....	225.9	210.9	208.2	208.9	226.8	213.0	211.5	209.9	208.0	208.7	.7
Water transportation .....	59.1	58.0	56.3	56.9	60.3	56.3	56.5	56.7	56.9	57.7	.8
Truck transportation .....	1,347.9	1,274.4	1,261.4	1,251.1	1,340.8	1,261.2	1,261.7	1,253.5	1,249.9	1,246.6	-3.3
Transit and ground passenger transportation .....	425.2	414.7	417.5	415.2	410.1	405.4	400.5	400.5	402.6	400.7	-1.9
Pipeline transportation .....	43.4	43.1	43.2	43.0	43.3	42.4	43.2	43.3	43.0	42.7	-3
Scenic and sightseeing transportation .....	23.2	27.9	22.9	21.3	27.2	28.1	28.1	26.7	26.1	25.9	-2
Support activities for transportation .....	581.8	539.1	537.6	535.9	579.5	533.0	534.6	532.7	533.7	532.4	-1.3
Couriers and messengers .....	601.3	545.4	551.4	579.6	564.6	549.0	545.5	547.0	545.6	544.5	-1.1
Warehousing and storage .....	668.5	643.4	650.2	647.5	659.5	640.4	638.9	636.2	636.4	637.3	.9
Utilities .....	563.7	568.2	566.4	565.8	564.6	566.5	567.5	568.1	567.4	566.5	-9
Information .....	2,954	2,820	2,818	2,820	2,940	2,829	2,828	2,826	2,812	2,806	-6
Publishing industries, except Internet .....	862.2	782.1	781.1	778.2	857.8	788.5	787.3	781.0	777.3	773.6	-3.7
Motion picture and sound recording industries .....	380.3	382.4	383.7	391.9	377.2	384.3	385.0	389.3	385.6	388.3	2.7
Broadcasting, except Internet .....	310.8	289.2	292.8	290.6	308.1	288.7	289.6	288.3	290.3	287.6	-2.7
Telecommunications .....	1,007.5	974.9	970.0	968.3	1,004.0	976.7	975.0	976.0	969.4	965.9	-3.5
Data processing, hosting and related services .....	256.7	254.8	253.9	254.6	256.4	256.9	255.8	254.7	253.5	254.2	.7
Other information services .....	136.5	136.9	136.1	136.3	136.5	134.3	135.1	136.6	136.0	135.9	-1
Financial activities .....	8,009	7,699	7,683	7,705	8,010	7,714	7,703	7,697	7,691	7,695	4
Finance and insurance .....	5,926.5	5,710.1	5,711.5	5,732.1	5,924.0	5,729.8	5,720.9	5,718.7	5,714.6	5,724.5	9.9
Monetary authorities - central bank .....	21.1	20.3	20.3	20.3	21.3	20.3	20.3	20.6	20.4	20.4	.0
Credit intermediation and related activities <sup>1</sup> .....	2,679.2	2,583.4	2,584.7	2,596.0	2,680.8	2,594.4	2,589.1	2,589.1	2,589.8	2,593.6	3.8
Depository credit intermediation <sup>1</sup> .....	1,805.4	1,763.5	1,766.3	1,772.1	1,804.9	1,767.4	1,766.1	1,765.7	1,768.6	1,769.2	.6
Commercial banking .....	1,351.1	1,318.2	1,320.7	1,325.5	1,351.8	1,320.8	1,319.7	1,320.0	1,322.8	1,323.6	.8
Securities, commodity contracts, investments .....	840.8	778.6	777.5	781.8	839.9	780.5	777.8	778.6	775.7	779.5	3.8
Insurance carriers and related activities .....	2,294.5	2,241.0	2,243.1	2,247.6	2,292.0	2,247.6	2,247.2	2,244.0	2,242.6	2,245.3	2.7
Funds, trusts, and other financial vehicles .....	90.9	86.8	85.9	86.4	90.0	87.0	86.5	86.4	86.1	85.7	-4
Real estate and rental and leasing .....	2,082.9	1,988.5	1,971.7	1,972.7	2,085.8	1,984.3	1,982.3	1,978.3	1,976.5	1,970.4	-6.1
Real estate .....	1,460.4	1,405.6	1,400.6	1,401.4	1,458.2	1,394.9	1,399.0	1,396.9	1,400.6	1,395.2	-5.4
Rental and leasing services .....	594.0	555.5	543.9	543.7	599.3	562.1	555.9	553.9	548.5	547.8	-7
Lessors of nonfinancial intangible assets .....	28.5	27.4	27.2	27.6	28.3	27.3	27.4	27.5	27.4	27.4	.0

See footnotes at the end of table.

Table B-1. Employees on nonfarm payrolls by industry sector and selected industry detail—Continued

(In thousands)

Industry	Not seasonally adjusted				Seasonally adjusted						Change from: Nov. 2009 <sup>P</sup> -Dec. 2009 <sup>P</sup>
	Dec. 2008	Oct. 2009	Nov. 2009 <sup>P</sup>	Dec. 2009 <sup>P</sup>	Dec. 2008	Aug. 2009	Sept. 2009	Oct. 2009	Nov. 2009 <sup>P</sup>	Dec. 2009 <sup>P</sup>	
Professional and business services .....	17,406	16,861	16,892	16,896	17,356	16,618	16,642	16,675	16,764	16,814	50
Professional and technical services <sup>1</sup> .....	7,840.8	7,568.2	7,593.4	7,651.1	7,797.2	7,587.8	7,588.5	7,588.4	7,596.5	7,605.3	8.8
Legal services .....	1,160.5	1,118.9	1,116.8	1,117.8	1,156.8	1,127.2	1,124.8	1,118.7	1,116.2	1,114.1	-2.1
Accounting and bookkeeping services .....	951.3	876.0	882.2	940.5	933.7	938.0	932.0	935.6	929.1	926.5	-2.6
Architectural and engineering services .....	1,417.0	1,327.8	1,326.5	1,323.7	1,419.4	1,320.9	1,322.2	1,318.8	1,320.2	1,324.2	4.0
Computer systems design and related services .....	1,475.1	1,481.2	1,482.8	1,486.4	1,466.8	1,461.3	1,465.6	1,471.8	1,473.7	1,477.1	3.4
Management and technical consulting services .....	1,030.0	1,031.2	1,041.5	1,044.3	1,020.5	1,015.3	1,016.6	1,024.4	1,030.4	1,033.9	3.5
Management of companies and enterprises .....	1,875.7	1,804.3	1,807.3	1,812.2	1,872.1	1,816.4	1,810.8	1,807.5	1,806.3	1,804.0	-2.3
Administrative and waste services .....	7,689.5	7,488.5	7,491.7	7,432.8	7,686.3	7,214.1	7,242.9	7,279.3	7,361.4	7,404.3	42.9
Administrative and support services <sup>1</sup> .....	7,328.7	7,121.2	7,125.9	7,068.3	7,324.4	6,851.6	6,877.8	6,914.9	6,996.9	7,039.3	42.4
Employment services <sup>1</sup> .....	2,887.8	2,665.3	2,698.4	2,726.1	2,829.5	2,465.6	2,486.9	2,529.5	2,594.6	2,650.3	55.7
Temporary help services .....	2,105.7	1,920.5	1,952.9	1,975.4	2,055.6	1,748.4	1,765.6	1,809.9	1,865.1	1,911.6	46.5
Business support services .....	833.8	791.8	802.7	805.0	816.0	784.5	787.0	785.6	789.4	784.9	-4.5
Services to buildings and dwellings .....	1,745.4	1,810.8	1,776.9	1,695.7	1,818.1	1,765.3	1,764.8	1,763.0	1,766.5	1,763.3	-3.2
Waste management and remediation services .....	360.8	367.3	365.8	364.5	361.9	362.5	365.1	364.4	364.5	365.0	.5
Education and health services .....	19,242	19,564	19,642	19,626	19,080	19,312	19,348	19,384	19,421	19,456	35
Educational services .....	3,186.1	3,235.1	3,270.7	3,231.2	3,063.1	3,077.7	3,074.3	3,084.6	3,095.1	3,105.9	10.8
Health care and social assistance .....	16,055.9	16,329.2	16,371.1	16,395.1	16,017.0	16,233.8	16,273.2	16,299.6	16,325.5	16,350.2	24.7
Health care <sup>3</sup> .....	13,502.4	13,722.1	13,749.1	13,772.0	13,475.9	13,653.3	13,679.1	13,702.3	13,721.4	13,742.9	21.5
Ambulatory health care services <sup>1</sup> .....	5,758.0	5,896.7	5,913.6	5,939.0	5,742.6	5,855.8	5,873.4	5,885.2	5,899.0	5,921.8	22.8
Offices of physicians .....	2,304.9	2,346.5	2,346.5	2,360.1	2,294.5	2,335.3	2,339.0	2,339.1	2,340.3	2,349.2	8.9
Outpatient care centers .....	537.1	548.3	548.7	550.4	536.7	543.8	543.6	548.0	547.1	549.6	2.5
Home health care services .....	981.3	1,040.0	1,050.4	1,057.1	980.7	1,022.6	1,030.7	1,038.8	1,046.9	1,054.9	8.0
Hospitals .....	4,708.2	4,741.0	4,747.2	4,747.8	4,703.7	4,723.9	4,729.6	4,735.8	4,739.9	4,741.3	1.4
Nursing and residential care facilities <sup>1</sup> .....	3,036.2	3,084.4	3,088.3	3,085.2	3,029.6	3,073.6	3,076.1	3,081.3	3,082.5	3,079.8	-2.7
Nursing care facilities .....	1,621.2	1,640.1	1,640.1	1,639.3	1,617.3	1,634.9	1,636.5	1,637.8	1,636.1	1,636.2	.1
Social assistance <sup>1</sup> .....	2,553.5	2,607.1	2,622.0	2,623.1	2,541.1	2,580.5	2,594.1	2,597.3	2,604.1	2,607.3	3.2
Child day care services .....	875.5	867.4	871.9	869.5	864.3	856.3	859.4	856.4	857.0	856.2	-8
Leisure and hospitality .....	13,013	13,094	12,882	12,798	13,304	13,163	13,176	13,134	13,121	13,096	-25
Arts, entertainment, and recreation .....	1,799.5	1,859.6	1,761.3	1,747.4	1,947.1	1,893.2	1,922.8	1,900.8	1,900.0	1,890.8	-9.2
Performing arts and spectator sports .....	387.8	398.8	382.9	378.1	401.4	395.2	399.1	399.1	394.7	392.0	-2.7
Museums, historical sites, zoos, and parks .....	123.8	132.0	126.1	124.3	130.8	131.0	131.4	131.2	130.7	131.2	.5
Amusements, gambling, and recreation .....	1,287.9	1,328.8	1,252.3	1,245.0	1,414.9	1,367.0	1,392.3	1,370.5	1,374.6	1,367.6	-7.0
Accommodation and food services .....	11,213.3	11,234.3	11,120.4	11,051.0	11,356.5	11,269.5	11,253.6	11,232.9	11,221.4	11,204.8	-16.6
Accommodation .....	1,739.8	1,698.6	1,652.8	1,647.5	1,794.3	1,714.4	1,709.8	1,703.2	1,698.3	1,696.9	-1.4
Food services and drinking places .....	9,473.5	9,535.7	9,467.6	9,403.5	9,562.2	9,555.1	9,543.8	9,529.7	9,523.1	9,507.9	-15.2
Other services .....	5,455	5,377	5,359	5,352	5,477	5,405	5,395	5,381	5,378	5,374	-4
Repair and maintenance .....	1,178.7	1,151.9	1,149.8	1,145.6	1,189.9	1,154.3	1,150.6	1,150.7	1,153.9	1,154.4	.5
Personal and laundry services .....	1,319.7	1,285.1	1,280.4	1,278.6	1,320.9	1,293.4	1,289.6	1,284.5	1,283.5	1,280.4	-3.1
Membership associations and organizations .....	2,957.0	2,939.8	2,929.0	2,927.6	2,965.7	2,956.8	2,955.1	2,945.6	2,940.3	2,939.3	-1.0
Government .....	22,894	22,864	22,966	22,816	22,532	22,487	22,448	22,484	22,488	22,467	-21
Federal .....	2,782	2,855	2,833	2,825	2,778	2,825	2,827	2,844	2,839	2,830	-9
Federal, except U.S. Postal Service .....	2,044.9	2,158.9	2,152.2	2,157.1	2,057.3	2,129.3	2,137.0	2,161.0	2,163.7	2,167.0	3.3
U.S. Postal Service .....	737.1	695.7	681.1	667.7	720.9	695.8	689.5	683.3	675.7	663.1	-12.6
State government .....	5,297	5,335	5,352	5,279	5,196	5,172	5,173	5,179	5,180	5,177	-3
State government education .....	2,497.0	2,554.9	2,580.1	2,511.7	2,381.3	2,377.3	2,375.8	2,389.3	2,395.5	2,393.6	-1.9
State government, excluding education .....	2,800.1	2,779.9	2,771.8	2,767.6	2,814.8	2,794.3	2,796.7	2,789.9	2,784.6	2,783.0	-1.6
Local government .....	14,815	14,674	14,781	14,712	14,558	14,490	14,448	14,461	14,469	14,460	-9
Local government education .....	8,395.1	8,273.9	8,393.8	8,365.1	8,060.5	8,007.8	7,988.6	8,020.0	8,034.7	8,033.5	-1.2
Local government, excluding education .....	6,419.5	6,400.5	6,387.6	6,347.3	6,497.7	6,481.7	6,459.1	6,441.4	6,434.1	6,426.0	-8.1

<sup>1</sup> Includes other industries, not shown separately.<sup>2</sup> Includes motor vehicles, motor vehicle bodies and trailers, and motor vehicle parts.<sup>3</sup> Includes ambulatory health care services, hospitals, and nursing and residential care facilities.

P = preliminary.

Table B-2. Average weekly hours of production and nonsupervisory workers<sup>1</sup> on private nonfarm payrolls by industry sector and selected industry detail

Industry	Not seasonally adjusted				Seasonally adjusted						
	Dec. 2008	Oct. 2009	Nov. 2009 <sup>P</sup>	Dec. 2009 <sup>P</sup>	Dec. 2008	Aug. 2009	Sept. 2009	Oct. 2009	Nov. 2009 <sup>P</sup>	Dec. 2009 <sup>P</sup>	Change from: Nov. 2009-Dec. 2009 <sup>P</sup>
Total private .....	33.2	33.1	33.5	33.1	33.3	33.1	33.1	33.0	33.2	33.2	0.0
Goods-producing .....	39.4	39.4	39.9	39.7	39.4	39.4	39.3	39.1	39.6	39.6	.0
Mining and logging .....	44.2	43.1	44.2	43.7	44.3	43.3	43.2	42.8	43.2	43.5	.3
Construction .....	37.3	37.3	37.9	37.1	38.0	37.9	37.5	36.9	37.7	37.7	.0
Manufacturing .....	40.3	40.4	40.7	40.9	39.9	39.9	40.0	40.1	40.4	40.4	.0
Overtime hours .....	3.2	3.4	3.6	3.7	2.9	3.0	3.0	3.2	3.4	3.4	.0
Durable goods .....	40.5	40.4	40.8	41.2	40.0	39.9	40.1	40.2	40.5	40.5	.0
Overtime hours .....	3.1	3.2	3.4	3.7	2.8	2.8	2.8	3.0	3.2	3.3	.1
Wood products .....	36.7	38.0	38.2	38.5	36.8	37.7	37.8	37.8	38.1	38.4	.3
Nonmetallic mineral products .....	40.5	41.5	42.8	39.5	40.9	41.3	41.1	40.8	41.9	40.1	-1.8
Primary metals .....	40.8	41.3	43.0	43.7	40.5	40.7	40.9	41.4	42.8	43.1	.3
Fabricated metal products .....	40.7	40.0	39.9	40.5	40.3	39.5	39.4	39.6	39.6	39.9	.3
Machinery .....	41.6	40.4	40.9	41.4	41.1	39.9	39.9	40.2	40.5	40.7	.2
Computer and electronic products .....	41.2	40.7	41.3	41.7	40.4	40.5	40.5	40.6	40.8	40.8	.0
Electrical equipment and appliances .....	40.7	39.9	40.7	40.8	39.7	39.1	39.4	39.5	40.0	39.7	-.3
Transportation equipment .....	41.6	42.4	42.2	43.3	40.9	41.6	42.0	42.0	42.2	42.4	.2
Motor vehicles and parts <sup>2</sup> .....	40.7	42.5	41.9	43.5	39.9	40.8	41.3	41.9	41.9	42.3	.4
Furniture and related products .....	37.8	38.1	38.3	39.2	37.3	37.5	38.0	38.3	38.5	38.6	.1
Miscellaneous manufacturing .....	38.5	38.6	39.2	39.2	38.3	38.6	38.6	38.6	39.0	38.9	-.1
Nondurable goods .....	40.0	40.3	40.6	40.6	39.7	39.9	39.9	40.0	40.1	40.2	.1
Overtime hours .....	3.3	3.7	3.8	3.8	3.1	3.3	3.3	3.5	3.6	3.6	.0
Food manufacturing .....	40.2	40.5	40.7	40.7	39.8	40.1	39.9	40.0	40.2	40.2	.0
Beverages and tobacco products .....	36.4	36.0	36.8	36.3	36.7	35.4	35.9	36.2	36.1	36.3	.2
Textile mills .....	37.3	39.3	40.3	39.7	37.0	37.9	37.9	38.9	39.7	39.3	-.4
Textile product mills .....	37.7	38.0	37.8	38.5	37.1	38.1	38.3	38.1	37.8	38.1	.3
Apparel .....	36.1	36.2	36.8	36.2	36.0	35.6	36.0	36.1	36.3	36.1	-.2
Leather and allied products .....	35.4	35.8	35.9	35.8	34.7	33.7	33.2	34.8	35.8	35.1	-.7
Paper and paper products .....	42.6	42.4	42.7	42.6	41.9	42.0	42.4	42.1	42.2	41.9	-.3
Printing and related support activities .....	38.5	38.7	38.8	38.8	38.0	38.7	38.4	38.2	38.3	38.3	.0
Petroleum and coal products .....	44.6	42.9	43.0	42.8	45.3	44.1	43.0	42.1	42.7	43.2	.5
Chemicals .....	41.3	41.7	42.0	42.2	41.1	41.4	41.4	41.7	41.7	41.9	.2
Plastics and rubber products .....	40.5	40.9	41.3	41.6	40.0	40.3	40.6	40.7	40.9	41.0	.1
Private service-providing .....	32.0	31.9	32.4	32.0	32.2	32.0	32.0	32.0	32.1	32.1	.0
Trade, transportation, and utilities .....	32.9	32.9	33.0	33.0	32.9	32.8	32.8	32.9	32.9	32.9	.0
Wholesale trade .....	37.7	37.4	38.2	37.5	37.8	37.5	37.4	37.5	37.6	37.6	.0
Retail trade .....	29.9	29.9	29.8	30.0	29.7	29.8	29.8	29.9	29.9	29.9	.0
Transportation and warehousing .....	36.5	36.3	36.7	37.0	36.2	36.1	36.4	36.3	36.4	36.6	.2
Utilities .....	42.9	41.8	42.2	41.8	42.9	41.9	41.5	41.7	41.9	41.7	-.2
Information .....	36.9	36.3	37.3	36.5	37.0	36.4	36.4	36.3	36.7	36.5	-.2
Financial activities .....	35.7	35.7	36.8	35.7	35.9	36.1	35.9	36.0	36.1	35.9	-.2
Professional and business services .....	34.6	34.7	35.4	34.7	34.8	34.7	34.7	34.7	34.9	34.8	-.1
Education and health services .....	32.3	32.1	32.5	32.2	32.4	32.2	32.2	32.2	32.2	32.3	.1
Leisure and hospitality .....	24.5	24.5	24.8	24.4	25.0	24.6	24.8	24.6	24.8	24.8	.0
Other services .....	30.5	30.5	30.7	30.4	30.6	30.5	30.5	30.5	30.5	30.5	.0

<sup>1</sup> Data relate to production workers in mining and logging and manufacturing, construction workers in construction, and nonsupervisory workers in the service-providing industries. These groups account for approximately four-fifths of the total employment on private nonfarm payrolls.

<sup>2</sup> Includes motor vehicles, motor vehicle bodies and trailers, and motor vehicle parts.

<sup>P</sup> = preliminary.

Table B-3. Average hourly and weekly earnings of production and nonsupervisory workers<sup>1</sup> on private nonfarm payrolls by industry sector and selected industry detail

Industry	Average hourly earnings				Average weekly earnings			
	Dec. 2008	Oct. 2009	Nov. 2009 <sup>P</sup>	Dec. 2009 <sup>P</sup>	Dec. 2008	Oct. 2009	Nov. 2009 <sup>P</sup>	Dec. 2009 <sup>P</sup>
Total private .....	\$18.40	\$18.73	\$18.85	\$18.82	\$610.88	\$619.96	\$631.48	\$622.94
Seasonally adjusted .....	18.40	18.74	18.77	18.80	612.72	618.42	623.16	624.16
Goods-producing .....	19.75	20.07	20.09	20.08	778.15	790.76	801.59	797.18
Mining and logging .....	23.53	23.21	23.12	23.52	1,040.03	1,000.35	1,021.90	1,027.82
Construction .....	22.52	23.01	22.87	22.87	840.00	858.27	866.77	848.48
Manufacturing .....	18.06	18.30	18.43	18.49	727.82	739.32	750.10	756.24
Durable goods .....	19.06	19.47	19.61	19.70	771.93	786.59	800.09	811.64
Wood products .....	14.66	15.10	15.26	15.17	538.02	573.80	582.93	584.05
Nonmetallic mineral products .....	16.73	17.35	17.40	17.27	677.57	720.03	744.72	682.17
Primary metals .....	20.05	20.36	20.61	20.52	818.04	840.87	886.23	896.72
Fabricated metal products .....	17.36	17.60	17.74	17.89	706.55	704.00	707.83	724.55
Machinery .....	18.15	18.56	18.75	18.87	755.04	749.82	766.88	781.22
Computer and electronic products .....	21.44	22.04	22.24	22.18	883.33	897.03	918.51	924.91
Electrical equipment and appliances .....	15.88	16.48	16.60	16.55	646.32	657.55	675.62	675.24
Transportation equipment .....	24.58	24.87	24.91	25.01	1,022.53	1,054.49	1,051.20	1,082.93
Furniture and related products .....	14.92	15.00	14.97	15.19	563.98	571.50	573.35	595.45
Miscellaneous manufacturing .....	15.60	16.21	16.63	16.63	600.60	625.71	651.90	651.90
Nondurable goods .....	16.43	16.60	16.69	16.70	657.20	668.98	677.61	678.02
Food manufacturing .....	14.26	14.51	14.48	14.50	573.25	587.66	589.34	590.15
Beverages and tobacco products .....	19.95	20.60	20.84	20.60	726.18	741.60	766.91	747.78
Textile mills .....	13.80	13.60	13.18	13.22	514.74	534.48	531.15	524.83
Textile product mills .....	11.72	11.41	11.63	11.78	441.84	433.58	439.61	453.53
Apparel .....	11.38	11.15	11.30	11.51	410.82	403.63	415.84	416.66
Leather and allied products .....	13.47	13.83	13.72	13.41	476.84	495.11	492.55	480.08
Paper and paper products .....	19.11	19.18	19.48	19.55	814.09	813.23	831.80	832.83
Printing and related support activities .....	17.01	16.79	16.86	16.89	654.89	649.77	654.17	655.33
Petroleum and coal products .....	28.17	30.57	30.77	30.73	1,256.38	1,311.45	1,323.11	1,315.24
Chemicals .....	19.72	20.57	20.77	20.69	814.44	857.77	872.34	873.12
Plastics and rubber products .....	16.24	15.79	15.96	16.07	657.72	645.81	659.15	668.51
Private service-providing .....	18.09	18.44	18.58	18.55	578.88	588.24	601.99	593.60
Trade, transportation, and utilities .....	16.14	16.56	16.62	16.54	531.01	544.82	548.46	545.82
Wholesale trade .....	20.36	21.08	21.40	21.50	767.57	788.39	817.48	806.25
Retail trade .....	12.74	13.07	13.04	12.98	380.93	390.79	388.59	389.40
Transportation and warehousing .....	18.62	18.74	18.78	18.73	679.63	680.26	689.23	693.01
Utilities .....	29.28	29.83	30.06	30.32	1,256.11	1,246.89	1,268.53	1,267.38
Information .....	24.86	25.74	25.88	25.75	917.33	934.36	965.32	939.88
Financial activities .....	20.50	20.96	21.18	21.12	731.85	748.27	779.42	753.98
Professional and business services .....	22.01	22.37	22.67	22.61	761.55	776.24	802.52	784.57
Education and health services .....	19.23	19.59	19.58	19.64	621.13	628.84	636.35	632.41
Leisure and hospitality .....	11.05	11.22	11.31	11.37	270.73	274.89	280.49	277.43
Other services .....	16.27	16.44	16.48	16.57	496.24	501.42	505.94	503.73

<sup>1</sup> See footnote 1, table B-2.

P = preliminary.

**Table B-4. Average hourly earnings of production and nonsupervisory workers<sup>1</sup> on private nonfarm payrolls by industry sector and selected industry detail, seasonally adjusted**

Industry	Dec. 2008	Aug. 2009	Sept. 2009	Oct. 2009	Nov. 2009 <sup>P</sup>	Dec. 2009 <sup>P</sup>	Percent change from: Nov. 2009- Dec. 2009 <sup>P</sup>
Total private:							
Current dollars .....	\$18.40	\$18.66	\$18.68	\$18.74	\$18.77	\$18.80	0.2
Constant (1982) dollars <sup>2</sup> .....	8.65	8.58	8.57	8.57	8.54	N.A.	( <sup>3</sup> )
Goods-producing .....	19.69	19.92	19.92	20.00	20.04	20.03	.0
Mining and logging .....	23.23	23.21	23.14	23.33	23.18	23.27	.4
Construction .....	22.41	22.63	22.50	22.84	22.80	22.77	-.1
Manufacturing .....	17.96	18.27	18.36	18.35	18.41	18.40	-.1
Excluding overtime <sup>4</sup> .....	17.33	17.61	17.70	17.65	17.67	17.66	-.1
Durable goods .....	18.94	19.41	19.49	19.52	19.59	19.59	.0
Nondurable goods .....	16.39	16.60	16.70	16.63	16.68	16.66	-.1
Private service-providing .....	18.10	18.39	18.41	18.47	18.50	18.54	.2
Trade, transportation, and utilities .....	16.31	16.54	16.53	16.58	16.63	16.69	.4
Wholesale trade .....	20.31	20.99	21.05	21.14	21.29	21.45	.8
Retail trade .....	12.94	13.10	13.09	13.08	13.11	13.15	.3
Transportation and warehousing .....	18.66	18.67	18.61	18.76	18.73	18.75	.1
Utilities .....	29.16	29.79	29.71	29.79	30.02	30.12	.3
Information .....	24.91	25.61	25.52	25.66	25.81	25.85	.2
Financial activities .....	20.53	20.85	20.90	20.98	21.05	21.14	.4
Professional and business services .....	21.97	22.48	22.57	22.54	22.49	22.55	.3
Education and health services .....	19.20	19.49	19.52	19.59	19.59	19.61	.1
Leisure and hospitality .....	10.94	11.12	11.21	11.20	11.26	11.25	-.1
Other services .....	16.29	16.37	16.41	16.46	16.48	16.53	.3

<sup>1</sup> See footnote 1, table B-2.<sup>2</sup> The Consumer Price Index for Urban Wage Earners and Clerical Workers (CPI-W) is used to deflate this series.<sup>3</sup> Change was -0.4 percent from Oct. 2009 to Nov. 2009, the latest month available.<sup>4</sup> Derived by assuming that overtime hours are paid at the rate of time and one-half.

N.A. = not available.

<sup>P</sup> = preliminary.

Table B-5. Indexes of aggregate weekly hours of production and nonsupervisory workers<sup>1</sup> on private nonfarm payrolls by industry sector and selected industry detail

(2002=100)

Industry	Not seasonally adjusted				Seasonally adjusted						Percent change from: Nov. 2009- Dec. 2009 <sup>P</sup>
	Dec. 2008	Oct. 2009	Nov. 2009 <sup>P</sup>	Dec. 2009 <sup>P</sup>	Dec. 2008	Aug. 2009	Sept. 2009	Oct. 2009	Nov. 2009 <sup>P</sup>	Dec. 2009 <sup>P</sup>	
Total private .....	103.4	99.5	100.8	99.3	103.2	99.0	98.9	98.5	99.1	99.1	0.0
Goods-producing .....	89.9	81.5	81.7	79.5	90.4	80.5	79.9	79.1	79.9	79.5	-5
Mining and logging .....	138.1	118.0	121.2	118.2	139.1	117.8	117.5	115.3	116.9	117.7	.7
Construction .....	95.9	88.5	87.9	81.4	99.8	87.2	85.5	83.4	85.0	84.4	-7
Manufacturing .....	85.1	76.8	77.1	77.0	84.0	75.7	75.7	75.6	76.0	75.7	-4
Durable goods .....	86.2	74.6	75.2	75.7	84.6	73.8	73.9	73.7	74.0	73.7	-4
Wood products .....	66.5	60.2	59.9	60.6	66.7	58.6	58.7	59.0	59.5	60.4	1.5
Nonmetallic mineral products .....	81.8	76.4	78.4	69.9	84.0	76.0	75.3	73.2	75.4	72.2	-4.2
Primary metals .....	79.1	66.2	69.0	70.5	78.1	65.1	65.2	65.9	68.2	68.9	1.0
Fabricated metal products .....	95.2	80.7	80.2	81.2	93.8	79.7	79.1	79.2	78.8	79.3	.6
Machinery .....	96.6	76.9	77.6	78.9	94.8	77.2	76.5	76.4	76.4	76.6	.3
Computer and electronic products .....	99.5	88.6	89.7	90.3	96.8	88.9	88.5	88.4	88.3	87.8	-6
Electrical equipment and appliances .....	86.2	74.0	74.8	74.4	83.8	73.6	73.9	72.9	73.0	71.8	-1.6
Transportation equipment .....	81.4	71.7	71.5	73.6	79.0	69.8	70.6	70.7	70.7	70.8	.1
Motor vehicles and parts <sup>2</sup> .....	63.9	55.5	55.1	57.1	61.3	52.2	52.9	54.2	53.8	53.8	.0
Furniture and related products .....	67.0	55.4	56.3	57.1	66.1	55.9	56.1	55.9	56.5	56.1	-7
Miscellaneous manufacturing .....	87.0	82.2	83.5	82.2	85.9	81.7	81.5	81.2	82.0	80.8	-1.5
Nondurable goods .....	83.4	80.0	80.2	79.4	82.8	78.5	78.4	78.5	78.7	78.6	-1
Food manufacturing .....	99.9	102.3	101.6	100.1	98.6	99.2	98.8	98.9	99.1	98.7	-4
Beverages and tobacco products .....	86.9	93.4	91.0	88.1	89.3	85.9	87.9	89.4	88.9	89.2	.3
Textile mills .....	40.7	38.7	40.0	39.1	40.7	37.2	37.3	38.1	39.2	38.9	-8
Textile product mills .....	66.1	59.1	58.8	59.7	65.0	58.9	59.4	58.7	58.2	58.6	.7
Apparel .....	51.0	43.8	44.2	43.7	51.3	43.8	43.4	43.4	43.7	43.8	.2
Leather and allied products .....	64.1	57.4	58.0	58.3	62.5	56.3	54.8	55.6	58.2	57.2	-1.7
Paper and paper products .....	81.4	74.7	74.6	73.8	79.8	74.2	74.8	73.9	73.4	72.3	-1.5
Printing and related support activities .....	82.1	74.3	74.0	73.4	80.6	74.4	73.6	72.7	72.3	72.0	-4
Petroleum and coal products .....	94.4	92.2	89.7	81.4	98.4	91.3	88.3	87.1	87.7	85.3	-2.7
Chemicals .....	92.1	88.1	90.0	90.7	91.8	88.2	88.0	88.7	89.6	89.9	.3
Plastics and rubber products .....	81.0	73.0	73.9	74.1	80.2	71.6	72.2	72.1	73.0	72.9	-1
Private service-providing .....	107.1	104.3	106.2	104.9	107.0	104.2	104.2	104.1	104.5	104.6	.1
Trade, transportation, and utilities .....	103.4	97.6	99.3	99.9	100.6	97.4	97.1	97.1	97.1	96.9	-2
Wholesale trade .....	105.6	100.7	102.6	99.9	105.5	100.7	100.2	100.3	100.2	99.7	-5
Retail trade .....	101.8	95.2	97.4	99.2	97.1	95.3	95.0	95.0	95.0	95.0	.0
Transportation and warehousing .....	106.7	100.3	101.2	102.3	104.2	99.2	99.7	99.1	99.3	99.8	.5
Utilities .....	99.8	97.0	97.3	95.7	100.2	97.2	96.2	96.7	96.7	95.9	-8
Information .....	99.9	93.0	95.5	93.7	99.6	93.8	93.6	93.3	93.8	93.1	-7
Financial activities .....	105.6	101.8	104.6	101.8	106.2	103.0	102.3	102.6	102.7	102.3	-4
Professional and business services .....	110.5	107.1	109.5	107.3	110.8	105.3	105.3	105.6	107.0	107.1	.1
Education and health services .....	117.4	118.8	120.8	119.6	116.9	117.7	117.9	118.2	118.4	119.0	.5
Leisure and hospitality .....	103.2	103.9	103.4	100.9	107.8	104.9	106.0	104.6	105.4	105.1	-3
Other services .....	97.3	96.2	96.4	95.5	98.3	96.7	96.6	96.2	96.3	96.4	.1

<sup>1</sup> See footnote 1, table B-2.<sup>2</sup> Includes motor vehicles, motor vehicle bodies and trailers, and motor vehicle parts.<sup>P</sup> = preliminary.

NOTE: The index of aggregate weekly hours are calculated by dividing

the current month's estimates of aggregate hours by the corresponding 2002 annual average levels. Aggregate hours estimates are the product of estimates of average weekly hours and production and nonsupervisory worker employment.

**Table B-6. Indexes of aggregate weekly payrolls of production and nonsupervisory workers<sup>1</sup> on private nonfarm payrolls by industry sector and selected industry detail**

(2002=100)

Industry	Not seasonally adjusted				Seasonally adjusted						Percent change from: Nov. 2009- Dec. 2009 <sup>P</sup>
	Dec. 2008	Oct. 2009	Nov. 2009 <sup>P</sup>	Dec. 2009 <sup>P</sup>	Dec. 2008	Aug. 2009	Sept. 2009	Oct. 2009	Nov. 2009 <sup>P</sup>	Dec. 2009 <sup>P</sup>	
Total private .....	127.1	124.6	127.0	124.9	126.9	123.4	123.5	123.3	124.3	124.5	0.2
Goods-producing .....	108.7	100.2	100.6	97.7	109.0	98.2	97.5	96.8	98.1	97.6	-5
Mining and logging .....	189.0	159.2	163.0	161.7	188.0	159.0	158.2	156.5	157.5	159.2	1.1
Construction .....	116.7	110.0	108.5	100.5	120.8	106.5	103.8	102.9	104.7	103.8	-9
Manufacturing .....	100.5	91.9	93.0	93.2	98.7	90.4	90.9	90.7	91.5	91.1	-4
Durable goods .....	102.5	90.6	92.1	93.1	100.1	89.4	89.9	89.9	90.5	90.2	-3
Nondurable goods .....	96.8	93.9	94.6	93.7	95.9	92.1	92.6	92.2	92.7	92.5	-2
Private service-providing .....	132.8	131.9	135.3	133.5	132.8	131.4	131.5	131.8	132.6	132.9	.2
Trade, transportation, and utilities .....	119.1	115.3	117.7	117.9	117.0	114.9	114.5	114.9	115.1	115.3	.2
Wholesale trade .....	126.6	125.0	129.3	126.5	126.2	124.5	124.3	124.9	125.7	126.0	.2
Retail trade .....	111.2	106.6	108.9	110.4	107.7	107.0	106.6	106.5	106.8	107.0	.2
Transportation and warehousing .....	126.1	119.3	120.5	121.6	123.3	117.5	117.7	117.9	118.0	118.7	.6
Utilities .....	121.9	120.8	122.1	121.2	121.9	120.8	119.3	120.3	121.1	120.6	-4
Information .....	123.0	118.4	122.3	119.4	122.8	119.0	118.3	118.5	119.8	119.2	-5
Financial activities .....	133.8	131.9	136.9	133.0	134.9	132.8	132.2	133.1	133.7	133.7	.0
Professional and business services .....	144.7	142.6	147.7	144.3	144.9	140.8	141.4	141.6	143.2	143.7	.3
Education and health services .....	148.5	153.1	155.5	154.5	147.5	150.8	151.3	152.2	152.5	153.4	.6
Leisure and hospitality .....	129.5	132.3	132.8	130.3	133.9	132.5	135.0	133.1	134.8	134.3	-4
Other services .....	115.4	115.2	115.8	115.2	116.6	115.3	115.5	115.4	115.6	116.1	.4

<sup>1</sup> See footnote 1, table B-2.

<sup>P</sup> = preliminary.

NOTE: The index of aggregate weekly payrolls are calculated by dividing the current month's estimates of aggregate payrolls

by the corresponding 2002 annual average levels. Aggregate payroll estimates are the product of estimates of average hourly earnings, average weekly hours, and production and nonsupervisory worker employment.

Table B-7. Diffusion indexes of employment change

(Percent)

Time span	Jan.	Feb.	Mar.	Apr.	May	June	July	Aug.	Sept.	Oct.	Nov.	Dec.
Private nonfarm payrolls, 271 industries <sup>1</sup>												
Over 1-month span:												
2005 .....	52.6	60.1	54.1	58.1	56.8	58.3	58.5	59.2	54.2	55.9	62.7	57.6
2006 .....	64.9	62.2	63.8	59.8	49.1	51.8	59.2	55.4	55.7	56.3	59.4	60.7
2007 .....	53.5	55.5	52.4	49.4	55.9	48.3	50.7	46.5	55.9	57.2	59.4	57.9
2008 .....	42.1	40.6	44.1	41.1	42.6	36.9	37.6	39.1	34.7	33.0	27.1	20.5
2009 .....	22.1	20.8	19.6	21.8	29.3	25.8	30.3	36.7	39.3	33.8	P 42.4	P 40.0
Over 3-month span:												
2005 .....	51.7	57.2	59.0	59.8	57.9	62.0	60.5	62.9	60.3	55.5	56.3	62.7
2006 .....	67.7	68.6	65.1	65.1	60.5	58.9	55.5	57.0	55.0	54.4	59.0	64.2
2007 .....	62.5	54.8	54.2	54.8	54.1	50.4	52.8	48.7	53.3	53.9	58.3	62.5
2008 .....	57.7	44.8	40.2	39.7	37.3	33.6	33.6	32.8	34.9	33.2	26.9	20.8
2009 .....	18.6	14.2	15.1	15.3	20.3	22.0	22.0	24.5	31.9	31.0	P 38.2	P 35.8
Over 6-month span:												
2005 .....	55.4	57.9	58.1	57.0	58.3	60.9	63.1	63.3	61.6	59.6	61.4	62.5
2006 .....	64.6	63.8	67.5	66.2	65.5	66.6	60.3	61.1	57.9	57.9	62.4	59.0
2007 .....	60.3	57.2	60.5	58.3	55.5	56.5	52.8	52.4	56.6	54.4	56.8	59.0
2008 .....	56.6	53.0	50.7	47.4	40.2	33.4	31.0	33.4	30.6	29.0	26.0	24.4
2009 .....	21.6	17.2	15.1	15.3	15.9	16.6	15.9	20.7	24.0	22.1	P 25.3	P 29.9
Over 12-month span:												
2005 .....	60.9	60.9	60.0	59.2	58.3	60.3	61.3	63.3	60.7	59.2	59.8	61.8
2006 .....	67.2	65.5	65.9	62.9	65.5	66.8	64.8	64.4	66.6	65.9	64.9	66.2
2007 .....	63.3	59.4	61.1	59.6	59.2	58.3	56.8	57.2	59.4	58.9	58.1	59.6
2008 .....	54.4	56.1	52.6	49.1	50.2	47.8	43.7	42.3	38.0	37.8	32.3	28.2
2009 .....	24.0	22.0	19.9	18.1	17.5	17.2	16.2	15.3	16.4	15.3	P 15.5	P 15.7
Manufacturing payrolls, 83 industries <sup>1</sup>												
Over 1-month span:												
2005 .....	36.7	46.4	42.2	46.4	40.4	33.7	41.0	43.4	45.8	47.6	44.6	47.0
2006 .....	57.8	49.4	53.6	47.0	37.3	50.6	49.4	42.2	40.4	42.8	41.0	44.0
2007 .....	44.6	41.0	30.7	24.7	38.0	32.5	43.4	30.7	39.2	42.8	60.8	48.2
2008 .....	30.7	28.9	37.3	32.5	40.4	25.3	25.9	27.7	22.9	18.7	15.1	10.2
2009 .....	6.0	9.6	10.8	16.3	11.4	12.0	24.1	25.9	27.1	20.5	P 36.7	P 39.8
Over 3-month span:												
2005 .....	36.7	43.4	41.0	41.6	35.5	36.1	34.9	36.7	42.2	44.0	38.6	48.8
2006 .....	56.6	57.2	48.2	48.2	44.6	50.0	43.4	45.2	36.7	33.1	35.5	39.2
2007 .....	40.4	33.1	33.1	28.9	29.5	30.1	31.9	28.9	30.7	30.7	39.2	51.2
2008 .....	48.8	33.7	28.3	29.5	26.5	22.9	19.9	16.9	22.3	21.1	15.1	11.4
2009 .....	6.0	3.6	3.6	7.8	8.4	12.0	8.4	13.9	19.9	19.3	P 26.5	P 32.5
Over 6-month span:												
2005 .....	33.7	39.8	38.0	36.1	35.5	34.9	39.8	36.1	36.1	38.0	36.7	39.8
2006 .....	45.2	45.2	50.6	48.8	50.6	50.0	45.2	47.0	43.4	42.2	39.8	34.3
2007 .....	37.3	33.1	29.5	28.9	30.7	34.9	28.9	26.5	29.5	28.3	33.7	38.0
2008 .....	34.3	30.1	37.3	35.5	25.3	20.5	17.5	18.1	16.9	13.3	11.4	9.6
2009 .....	9.0	4.8	4.8	6.0	4.8	4.8	7.2	7.8	7.8	7.8	P 13.3	P 18.1
Over 12-month span:												
2005 .....	45.2	44.0	42.2	41.0	36.7	35.5	32.5	34.3	33.1	33.7	33.7	38.0
2006 .....	44.0	41.0	41.0	39.8	39.8	45.2	42.2	42.8	47.0	48.8	45.8	44.6
2007 .....	39.8	36.7	37.3	30.7	28.9	29.5	30.7	28.9	33.1	28.9	34.3	35.5
2008 .....	27.7	28.9	25.9	25.3	30.7	27.1	24.7	19.3	21.7	21.7	16.9	15.1
2009 .....	8.4	4.8	4.8	4.8	6.0	6.0	6.6	4.8	4.8	4.8	P 3.0	P 7.2

<sup>1</sup> Based on seasonally adjusted data for 1-, 3-, and 6-month spans and unadjusted data for the 12-month span.

P = preliminary.

NOTE: Figures are the percent of industries with employment increasing

plus one-half of the industries with unchanged employment, where 50 percent indicates an equal balance between industries with increasing and decreasing employment.