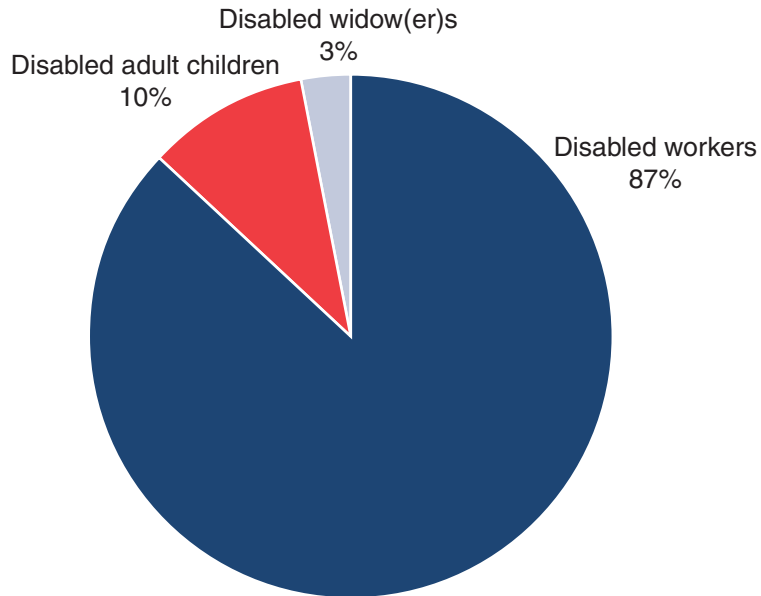


Chart 1.

All Social Security disabled beneficiaries in current-payment status, December 2005

In December 2005, about 7.5 million people received Social Security disability benefits as disabled workers, disabled widow(er)s, or disabled adult children. The majority (87 percent) were disabled workers, 10 percent were disabled adult children, and 3 percent were disabled widow(er)s.



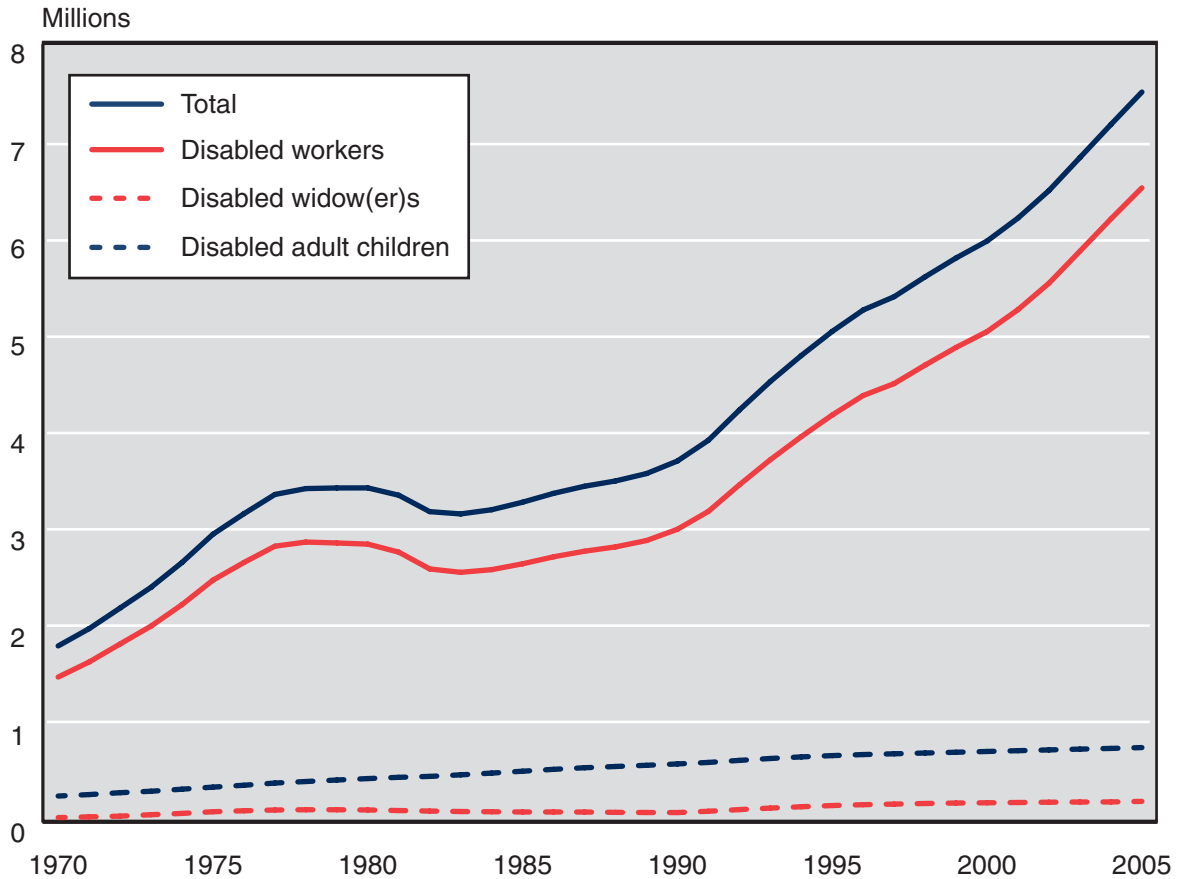
SOURCE: Table 3.

Beneficiaries in Current-Payment Status

Chart 2.

All Social Security disabled beneficiaries in current-payment status, December 1970–2005

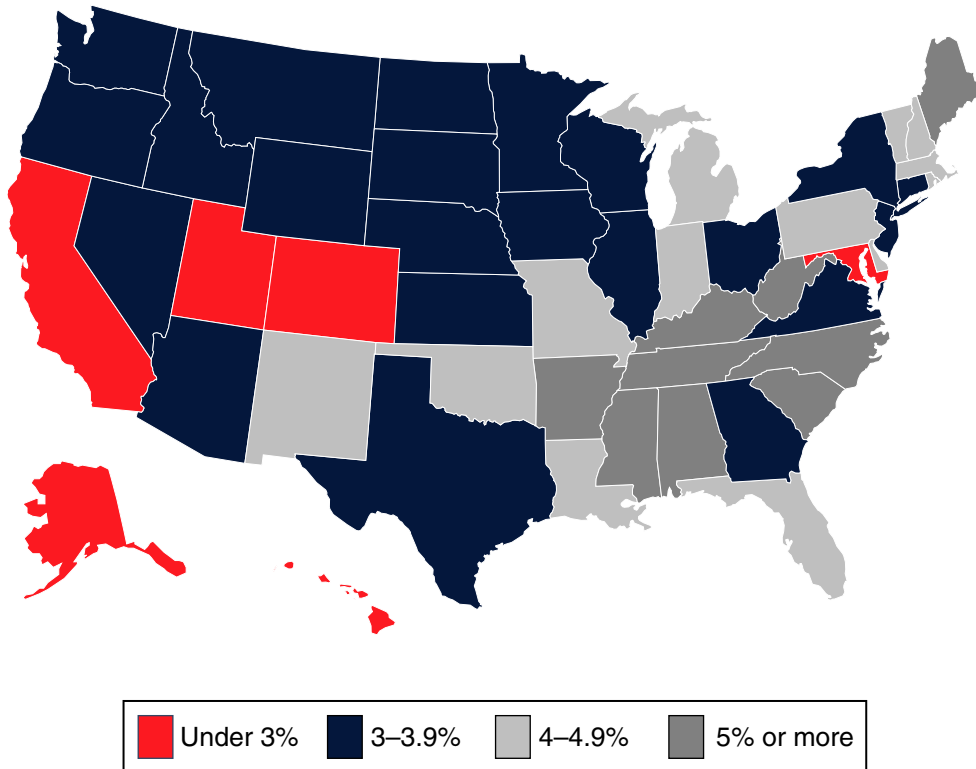
The number of disabled workers grew steadily until 1978, declined slightly until 1983, started to increase again in 1984, and began to increase more rapidly beginning in 1990. The growth in the 1980s and 1990s was the result of demographic changes, a recession, and legislative changes. The number of disabled adult children has grown slightly, and the number of disabled widow(er)s has remained fairly level. In December 2005, more than 6.5 million disabled workers, nearly 769,000 disabled adult children, and just under 216,000 disabled widow(er)s received disability benefits.



SOURCE: Table 3.

Chart 3.**Disabled beneficiaries aged 18–64 in current-payment status as a percentage of state population aged 18–64, December 2005**

Disabled beneficiaries aged 18–64 in current-payment status accounted for about 3.8 percent of the population aged 18–64 in the United States. In 6 states and the District of Columbia, they represented less than 3 percent of the state population. The states with the highest rates of disabled beneficiaries—5 percent or more—were Alabama, Arkansas, Kentucky, Maine, Mississippi, North Carolina, South Carolina, Tennessee, and West Virginia.



SOURCE: Table 8.

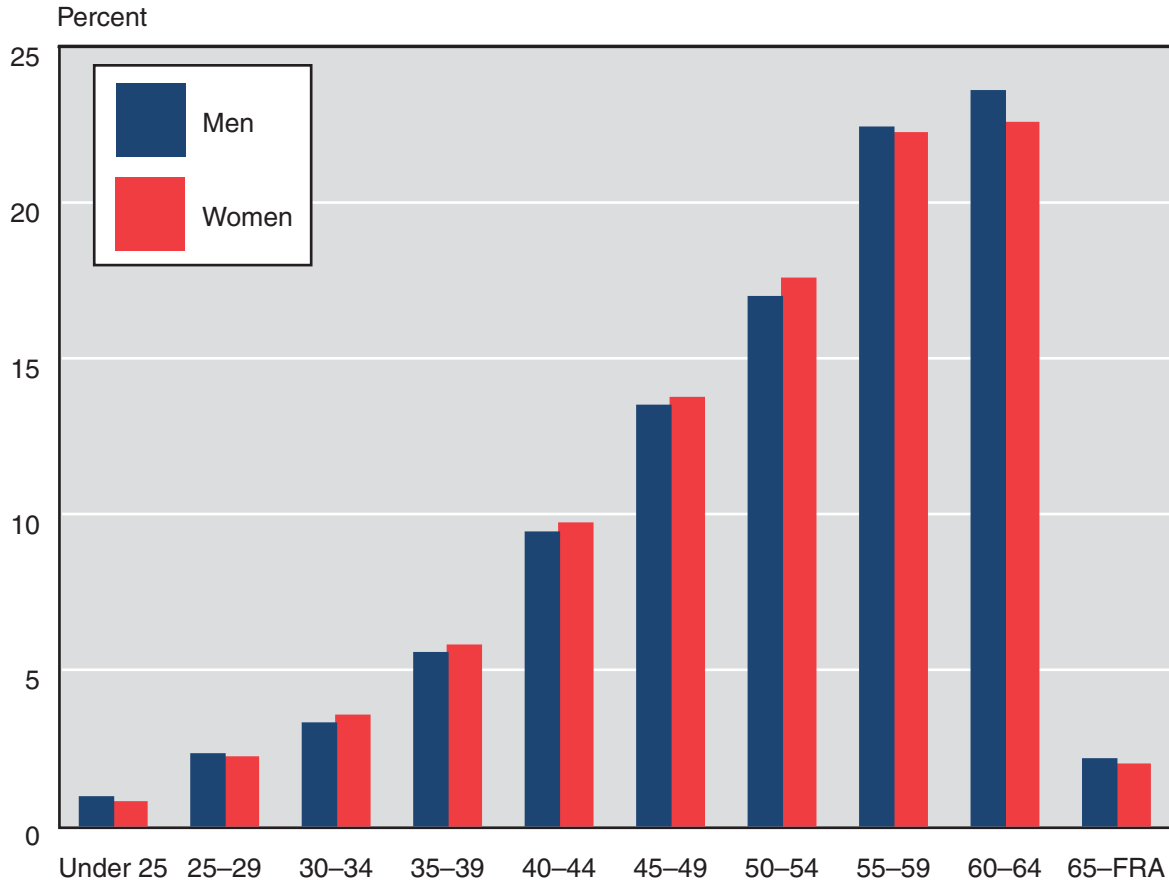
NOTE: The percentage for the District of Columbia is 2.98. In Table 8, that percentage has been rounded to 3.0.

Beneficiaries in Current-Payment Status

Chart 4.

Age of disabled-worker beneficiaries in current-payment status, by sex, December 2005

The percentage of disabled-worker beneficiaries increases with age for both men and women. In December 2005, the largest percentage of disabled-worker beneficiaries was aged 60–64. Disability benefits convert to retirement benefits when the worker reaches full retirement age, 65–67, depending on the year of birth.



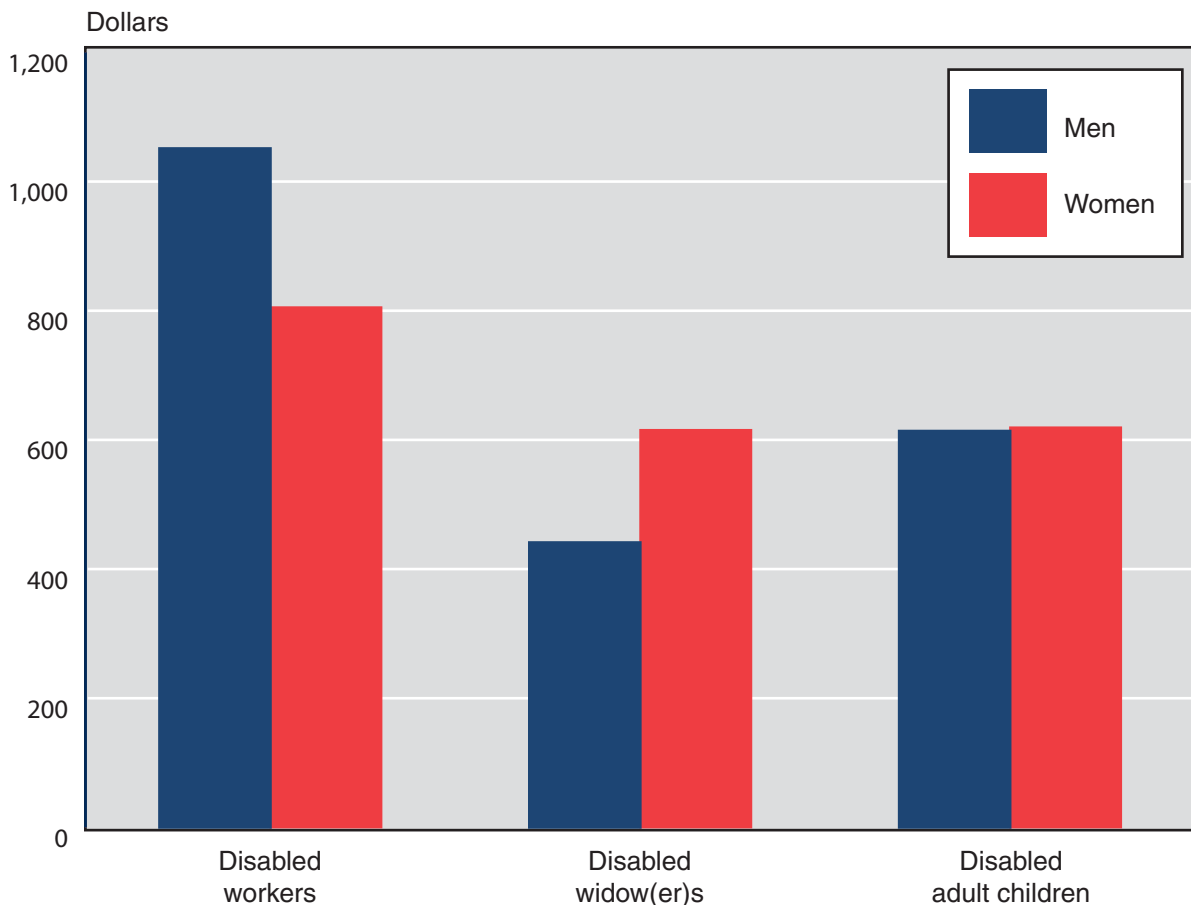
SOURCE: Table 4.

NOTE: FRA = full retirement age.

Chart 5.**Average monthly benefit of disabled beneficiaries in current-payment status, by sex, December 2005**

The average monthly benefit for disabled-worker beneficiaries is higher than that paid to disabled widow(er)s or disabled adult children. The reason for the difference is that disabled workers receive 100 percent of the primary insurance amount (PIA), compared with 71.5 percent for disabled widow(er)s and 50 percent for disabled adult children (if the worker is disabled or retired) or 75 percent (if the worker is deceased).

Because men have traditionally had higher earnings than women, their monthly benefit is higher. This is most obvious in the disabled-worker group. Benefits for disabled widow(er)s and disabled adult children are dependents' benefits, so their monthly benefit is a function of the worker's earnings. Therefore, a disabled widow's average benefit tends to be higher than that of a disabled widower because a male worker's earnings are higher than a female worker's. Benefit amounts are about the same for men and women in the disabled adult children group.



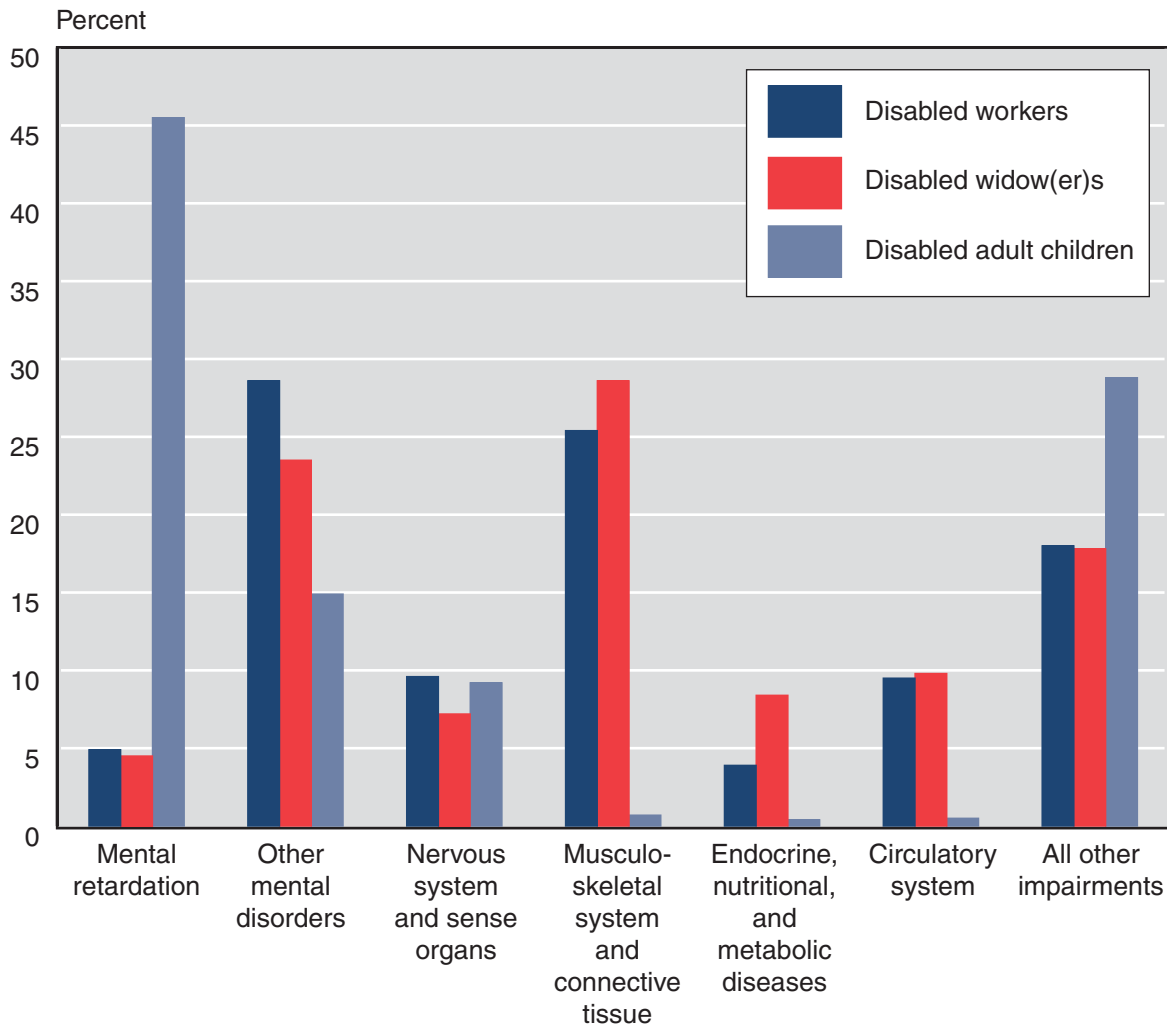
SOURCE: Table 5.

Beneficiaries in Current-Payment Status

Chart 6.

Disabled beneficiaries in current-payment status, by diagnostic group, December 2005

The impairment on which disability is based varies with the type of beneficiary. In December 2005, a mental disorder other than retardation was the primary reason disabled workers received benefits; diseases of the musculoskeletal system and connective tissue were the leading cause of disability among disabled widow(er)s; and mental retardation was the predominant reason for disability among disabled adult children.



SOURCE: Table 6.

All Disabled Beneficiaries

Table 3.
Number, average, and total monthly benefits, December 1960–2005

Year	Number				Average monthly benefit (dollars)			Total monthly benefits (thousands of dollars)		
	Total	Workers	Widow(er)s	Adult children	Workers	Widow(er)s	Adult children	Workers	Widow(er)s	Adult children
1960	559,425	455,371	...	104,054	89.31	...	44.15	40,669	...	4,594
1961	742,296	618,075	...	124,221	89.59	...	45.28	55,373	...	5,625
1962	888,131	740,867	...	147,264	89.99	...	45.67	66,671	...	6,726
1963	993,656	827,014	...	166,642	90.59	...	46.45	74,919	...	7,741
1964	1,077,695	894,173	...	183,522	91.12	...	47.35	81,477	...	8,690
1965	1,186,464	988,074	...	198,390	97.76	...	51.77	96,594	...	10,271
1966	1,310,911	1,097,190	...	213,721	98.09	...	52.42	107,623	...	11,203
1967	1,422,778	1,193,120	...	229,658	98.43	...	53.41	117,439	...	12,266
1968	1,560,517	1,295,300	21,563	243,654	111.86	72.25	61.83	144,892	1,558	15,065
1969	1,690,982	1,394,291	39,469	257,222	112.74	71.02	62.79	157,192	2,803	16,151
1970	1,812,786	1,492,948	49,281	270,557	131.26	82.00	73.21	195,964	4,041	19,807
1971	1,990,098	1,647,684	56,743	285,671	146.52	90.11	81.37	241,419	5,113	23,245
1972	2,202,090	1,832,916	64,167	305,007	179.32	109.54	98.81	328,678	7,029	30,138
1973	2,415,383	2,016,626	78,769	319,988	183.00	111.14	100.14	369,043	8,754	32,044
1974	2,670,092	2,236,882	92,128	341,082	205.70	125.87	112.45	460,127	11,596	38,355
1975	2,960,620	2,488,774	109,511	362,335	225.90	137.70	122.80	562,214	15,080	44,495
1976	3,171,198	2,670,208	119,427	381,563	245.17	147.01	132.32	654,655	17,557	50,488
1977	3,368,954	2,837,432	127,276	404,246	265.30	156.11	142.12	752,771	19,869	57,451
1978	3,429,421	2,879,774	129,751	419,896	288.30	165.46	153.66	830,239	21,469	64,521
1979	3,435,761	2,870,590	129,833	435,338	322.00	180.52	171.55	924,330	23,437	74,682
1980	3,436,429	2,858,680	127,580	450,169	370.70	205.02	198.95	1,059,713	26,156	89,561
1981	3,361,130	2,776,519	121,590	463,021	413.20	226.58	224.51	1,147,258	27,550	103,953
1982	3,192,379	2,603,599	116,372	472,408	440.60	242.11	245.07	1,147,146	28,175	115,773
1983	3,168,992	2,569,029	111,591	488,372	456.20	250.33	257.78	1,171,991	27,935	125,893
1984	3,212,040	2,596,516	109,151	506,373	470.70	306.24	270.28	1,222,180	33,426	136,862
1985	3,289,485	2,656,638	107,005	525,842	483.80	315.26	281.92	1,285,281	33,734	148,245
1986	3,380,480	2,728,463	106,974	545,043	487.90	319.74	288.79	1,331,217	34,204	157,403
1987	3,453,414	2,785,859	106,282	561,273	508.20	333.89	304.32	1,415,774	35,486	170,807
1988	3,507,707	2,830,284	103,123	574,300	529.50	348.05	320.21	1,498,635	35,892	183,897
1989	3,583,451	2,895,364	101,630	586,457	556.00	366.72	339.47	1,609,822	37,270	199,085
1990	3,712,763	3,011,294	100,989	600,480	587.20	388.93	361.71	1,768,232	39,278	217,200
1991	3,925,472	3,194,938	114,489	616,045	609.40	406.96	378.86	1,946,995	46,592	233,395
1992	4,236,080	3,467,783	131,324	636,973	626.10	422.65	393.61	2,171,179	55,504	250,719
1993	4,529,466	3,725,966	147,015	656,485	641.70	434.20	407.20	2,390,952	63,834	267,321
1994	4,796,313	3,962,954	160,676	672,683	661.40	446.30	422.40	2,621,098	71,710	284,141

(Continued)

Table 3.
Number, average, and total monthly benefits, December 1960–2005—Continued

Year	Number				Average monthly benefit (dollars)			Total monthly benefits (thousands of dollars)		
	Total	Workers	Widow(er)s	Adult children	Workers	Widow(er)s	Adult children	Workers	Widow(er)s	Adult children
1995	5,044,388	4,185,263	173,024	686,101	681.60	458.30	437.30	2,853,512	79,297	300,032
1996	5,264,321	4,385,623	181,911	696,787	703.90	471.00	454.30	3,087,040	85,680	316,550
1997	5,400,781	4,508,134	187,938	704,709	721.60	480.40	468.60	3,253,069	90,285	330,227
1998	5,605,272	4,698,319	194,181	712,772	733.10	487.30	479.40	3,444,338	94,624	341,703
1999	5,798,776	4,879,455	198,795	720,526	754.10	499.90	495.60	3,679,597	99,378	357,093
2000	5,972,468	5,042,333	201,446	728,689	786.40	519.70	518.30	3,965,291	104,681	377,650
2001	6,208,847	5,268,039	204,255	736,553	814.40	536.70	537.60	4,290,449	109,622	395,956
2002	6,491,494	5,539,597	207,365	744,532	834.30	548.10	550.40	4,621,852	113,653	409,813
2003	6,830,714	5,868,541	209,360	752,813	861.60	563.80	567.00	5,054,332	118,010	426,780
2004	7,167,375	6,197,385	210,736	759,254	894.10	582.70	587.60	5,540,703	122,795	446,096
2005	7,503,405	6,519,001	215,866	768,538	938.00	609.30	616.30	6,113,106	131,508	473,545

SOURCES: Social Security Administration. For years before 2000, *Annual Statistical Supplement to the Social Security Bulletin*, based on the Master Beneficiary Record, various sampling rates; for 2000, Social Security Disability Insurance Beneficiaries, 100 percent data; beginning with 2001, Disabled Beneficiaries and Dependents Master Beneficiary Record file, 100 percent data.

NOTE: . . . = not applicable.

CONTACT: Kevin Kulzer (410) 965-5366 or di.asr@ssa.gov.

All Disabled Beneficiaries

Table 4.
Number and average monthly benefit, by sex and age, December 2005

Age	Total		Workers		Widow(er)s		Adult children	
	Number	Average monthly benefit (dollars)	Number	Average monthly benefit (dollars)	Number	Average monthly benefit (dollars)	Number	Average monthly benefit (dollars)
All disabled beneficiaries								
Total	7,503,405	895.60	6,519,001	938.00	215,866	609.30	768,538	616.30
Under 25	130,921	513.30	54,623	504.30	76,298	519.80
25-29	210,312	599.80	146,385	614.60	63,927	565.90
30-34	291,762	670.70	221,138	694.40	70,624	596.40
35-39	455,489	735.50	368,579	762.20	86,910	622.20
40-44	732,382	791.90	622,211	819.20	110,171	637.60
45-49	992,108	859.00	886,513	883.90	105,595	650.30
50-54	1,234,989	926.80	1,123,773	954.40	28,134	615.40	83,082	659.40
55-59	1,596,612	986.10	1,455,621	1,020.30	79,518	614.30	61,473	658.30
60-64	1,654,182	1,006.70	1,506,574	1,044.80	105,354	604.10	42,254	650.80
65-FRA ^a	204,648	876.70	133,584	1,031.40	2,860	602.20	68,204	585.30
Men								
Subtotal	3,944,856	1,003.50	3,517,269	1,051.20	7,562	441.10	420,025	613.70
Under 25	76,601	516.70	32,009	512.60	44,592	519.70
25-29	116,929	607.60	80,573	625.60	36,356	567.70
30-34	154,949	679.80	115,271	710.00	39,678	592.20
35-39	244,000	750.80	194,960	783.80	49,040	619.40
40-44	393,230	822.30	330,915	857.50	62,315	635.60
45-49	533,242	917.00	474,249	950.40	58,993	648.50
50-54	643,225	1,028.90	596,710	1,058.40	1,310	444.30	45,205	657.40
55-59	823,698	1,144.20	788,317	1,167.10	3,270	441.40	32,111	654.80
60-64	853,682	1,210.90	829,479	1,228.20	2,920	440.50	21,283	644.40
65-FRA ^a	105,300	1,034.50	74,786	1,218.60	62	392.40	30,452	583.70
Women								
Subtotal	3,558,549	776.00	3,001,732	805.30	208,304	615.40	348,513	619.30
Under 25	54,320	508.60	22,614	492.50	31,706	520.10
25-29	93,383	590.10	65,812	601.30	27,571	563.50
30-34	136,813	660.30	105,867	677.40	30,946	601.80
35-39	211,489	717.90	173,619	738.00	37,870	625.90
40-44	339,152	756.60	291,296	775.80	47,856	640.10
45-49	458,866	791.60	412,264	807.40	46,602	652.60
50-54	591,764	815.80	527,063	836.60	26,824	623.70	37,877	661.90
55-59	772,914	817.60	667,304	846.80	76,248	621.70	29,362	662.10
60-64	800,500	788.80	677,095	820.10	102,434	608.80	20,971	657.30
65-FRA ^a	99,348	709.40	58,798	793.20	2,798	606.90	37,752	586.60

SOURCE: Social Security Administration, Disabled Beneficiaries and Dependents Master Beneficiary Record file, 100 percent data.

NOTE: FRA = full retirement age; . . . = not applicable.

a. FRA applies only to workers and widow(er)s. There is no age limit for adult children.

CONTACT: Kevin Kulzer (410) 965-5366 or di.asr@ssa.gov.

Table 5.
Distribution, by sex and monthly benefit, December 2005

Sex and monthly benefit (dollars)	Total		Workers		Widow(er)s		Adult children	
	Number	Percent	Number	Percent	Number	Percent	Number	Percent
All disabled beneficiaries	7,503,405	100.0	6,519,001	100.0	215,866	100.0	768,538	100.0
Less than 300.00	323,403	4.3	199,649	3.1	37,838	17.5	85,916	11.2
300.00–399.90	335,591	4.5	224,701	3.4	21,857	10.1	89,033	11.6
400.00–499.90	406,352	5.4	279,865	4.3	27,209	12.6	99,278	12.9
500.00–599.90	727,890	9.7	600,351	9.2	26,130	12.1	101,409	13.2
600.00–699.90	911,221	12.1	783,511	12.0	23,539	10.9	104,171	13.6
700.00–799.90	851,831	11.4	729,720	11.2	20,404	9.5	101,707	13.2
800.00–899.90	731,745	9.8	645,282	9.9	16,589	7.7	69,874	9.1
900.00–999.90	619,960	8.3	554,215	8.5	13,649	6.3	52,096	6.8
1,000.00–1,099.90	521,205	6.9	471,457	7.2	12,407	5.7	37,341	4.9
1,100.00–1,199.90	420,105	5.6	395,498	6.1	8,278	3.8	16,329	2.1
1,200.00–1,299.90	339,814	4.5	328,760	5.0	4,870	2.3	6,184	0.8
1,300.00–1,399.90	290,181	3.9	285,229	4.4	2,302	1.1	2,650	0.3
1,400.00–1,499.90	287,162	3.8	285,205	4.4	691	0.3	1,266	0.2
1,500.00–1,599.90	226,510	3.0	225,898	3.5	43	a	569	0.1
1,600.00–1,699.90	205,534	2.7	205,282	3.1	17	a	235	a
1,700.00–1,799.90	146,484	2.0	146,311	2.2	10	a	163	a
1,800.00 or more	158,417	2.1	158,067	2.4	33	a	317	a
Average benefit (dollars)	895.60		938.00		609.30		616.30	
Men	3,944,856	100.0	3,517,269	100.0	7,562	100.0	420,025	100.0
Less than 300.00	119,679	3.0	67,760	1.9	2,711	35.9	49,208	11.7
300.00–399.90	127,917	3.2	78,658	2.2	900	11.9	48,359	11.5
400.00–499.90	158,288	4.0	102,853	2.9	1,105	14.6	54,330	12.9
500.00–599.90	282,391	7.2	226,203	6.4	891	11.8	55,297	13.2
600.00–699.90	372,590	9.4	316,048	9.0	637	8.4	55,905	13.3
700.00–799.90	384,583	9.7	329,280	9.4	459	6.1	54,844	13.1
800.00–899.90	359,020	9.1	320,528	9.1	311	4.1	38,181	9.1
900.00–999.90	327,765	8.3	299,182	8.5	190	2.5	28,393	6.8
1,000.00–1,099.90	297,156	7.5	276,734	7.9	165	2.2	20,257	4.8
1,100.00–1,199.90	260,485	6.6	251,359	7.1	101	1.3	9,025	2.1
1,200.00–1,299.90	226,947	5.8	223,526	6.4	62	0.8	3,359	0.8
1,300.00–1,399.90	206,808	5.2	205,283	5.8	22	0.3	1,503	0.4
1,400.00–1,499.90	217,207	5.5	216,530	6.2	b	b	b	b
1,500.00–1,599.90	178,200	4.5	177,885	5.1	0	0	315	0.1
1,600.00–1,699.90	165,538	4.2	165,414	4.7	0	0	124	a
1,700.00–1,799.90	122,317	3.1	122,225	3.5	b	b	b	b
1,800.00 or more	137,965	3.5	137,801	3.9	0	0	164	a
Average benefit (dollars)	1,003.50		1,051.20		441.10		613.70	

(Continued)

All Disabled Beneficiaries

Table 5.
Distribution, by sex and monthly benefit, December 2005—Continued

Sex and monthly benefit (dollars)	Total		Workers		Widow(er)s		Adult children	
	Number	Percent	Number	Percent	Number	Percent	Number	Percent
Women	3,558,549	100.0	3,001,732	100.0	208,304	100.0	348,513	100.0
Less than 300.00	203,724	5.7	131,889	4.4	35,127	16.9	36,708	10.5
300.00–399.90	207,674	5.8	146,043	4.9	20,957	10.1	40,674	11.7
400.00–499.90	248,064	7.0	177,012	5.9	26,104	12.5	44,948	12.9
500.00–599.90	445,499	12.5	374,148	12.5	25,239	12.1	46,112	13.2
600.00–699.90	538,631	15.1	467,463	15.6	22,902	11.0	48,266	13.8
700.00–799.90	467,248	13.1	400,440	13.3	19,945	9.6	46,863	13.4
800.00–899.90	372,725	10.5	324,754	10.8	16,278	7.8	31,693	9.1
900.00–999.90	292,195	8.2	255,033	8.5	13,459	6.5	23,703	6.8
1,000.00–1,099.90	224,049	6.3	194,723	6.5	12,242	5.9	17,084	4.9
1,100.00–1,199.90	159,620	4.5	144,139	4.8	8,177	3.9	7,304	2.1
1,200.00–1,299.90	112,867	3.2	105,234	3.5	4,808	2.3	2,825	0.8
1,300.00–1,399.90	83,373	2.3	79,946	2.7	2,280	1.1	1,147	0.3
1,400.00–1,499.90	69,955	2.0	68,675	2.3	b	b	b	b
1,500.00–1,599.90	48,310	1.4	48,013	1.6	43	a	254	0.1
1,600.00–1,699.90	39,996	1.1	39,868	1.3	17	a	111	a
1,700.00–1,799.90	24,167	0.7	24,086	0.8	b	b	b	b
1,800.00 or more	20,452	0.6	20,266	0.7	33	a	153	a
Average benefit (dollars)	776.00		805.30		615.40		619.30	

SOURCE: Social Security Administration, Disabled Beneficiaries and Dependents Master Beneficiary Record file, 100 percent data.

a. Less than 0.05 percent.

b. Data not shown to avoid disclosure of information for particular individuals.

CONTACT: Kevin Kulzer (410) 965-5366 or di.asr@ssa.gov.

Table 6.
Distribution, by sex and diagnostic group, December 2005

Diagnostic group	Total		Workers		Widow(er)s		Adult children	
	Number	Percent	Number	Percent	Number	Percent	Number	Percent
All disabled beneficiaries								
Total	7,503,405	100.0	6,519,001	100.0	215,866	100.0	768,538	100.0
Congenital anomalies	19,965	0.3	11,001	0.2	273	0.1	8,691	1.1
Endocrine, nutritional, and metabolic diseases	273,771	3.6	252,933	3.9	18,072	8.4	2,766	0.4
Infectious and parasitic diseases	116,867	1.6	111,927	1.7	1,833	0.8	3,107	0.4
Injuries	296,987	4.0	281,828	4.3	5,383	2.5	9,776	1.3
Mental disorders								
Retardation	679,947	9.1	320,564	4.9	9,737	4.5	349,646	45.5
Other	2,028,156	27.0	1,862,618	28.6	50,708	23.5	114,830	14.9
Neoplasms	191,291	2.5	185,049	2.8	4,395	2.0	1,847	0.2
Diseases of the—								
Blood and blood-forming organs	18,592	0.2	16,270	0.2	361	0.2	1,961	0.3
Circulatory system	645,583	8.6	620,852	9.5	21,242	9.8	3,489	0.5
Digestive system	104,059	1.4	100,934	1.5	2,505	1.2	620	0.1
Genitourinary system	112,442	1.5	108,701	1.7	1,899	0.9	1,842	0.2
Musculoskeletal system and connective tissue	1,724,107	23.0	1,656,997	25.4	61,844	28.6	5,266	0.7
Nervous system and sense organs	710,202	9.5	623,948	9.6	15,607	7.2	70,647	9.2
Respiratory system	214,847	2.9	202,821	3.1	11,021	5.1	1,005	0.1
Skin and subcutaneous tissue	16,433	0.2	15,662	0.2	506	0.2	265	a
Other	14,751	0.2	13,225	0.2	262	0.1	1,264	0.2
Unknown	335,405	4.5	133,671	2.1	10,218	4.7	191,516	24.9
Men								
Subtotal	3,944,856	100.0	3,517,269	100.0	7,562	100.0	420,025	100.0
Congenital anomalies	10,199	0.3	5,681	0.2	9	0.1	4,509	1.1
Endocrine, nutritional, and metabolic diseases	111,483	2.8	109,819	3.1	364	4.8	1,300	0.3
Infectious and parasitic diseases	84,334	2.1	82,587	2.3	98	1.3	1,649	0.4
Injuries	203,352	5.2	196,216	5.6	356	4.7	6,780	1.6
Mental disorders								
Retardation	395,497	10.0	206,274	5.9	358	4.7	188,865	45.0
Other	1,017,985	25.8	943,764	26.8	1,543	20.4	72,678	17.3
Neoplasms	90,262	2.3	89,067	2.5	153	2.0	1,042	0.2
Diseases of the—								
Blood and blood-forming organs	8,288	0.2	7,285	0.2	17	0.2	986	0.2
Circulatory system	419,349	10.6	416,306	11.8	1,171	15.5	1,872	0.4
Digestive system	55,220	1.4	54,760	1.6	139	1.8	321	0.1
Genitourinary system	66,316	1.7	65,229	1.9	123	1.6	964	0.2
Musculoskeletal system and connective tissue	852,925	21.6	848,703	24.1	1,957	25.9	2,265	0.5
Nervous system and sense organs	348,977	8.8	310,759	8.8	523	6.9	37,695	9.0
Respiratory system	101,521	2.6	100,722	2.9	343	4.5	456	0.1
Skin and subcutaneous tissue	6,609	0.2	6,488	0.2	16	0.2	105	a
Other	6,910	0.2	6,213	0.2	9	0.1	688	0.2
Unknown	165,629	4.2	67,396	1.9	383	5.1	97,850	23.3

(Continued)

All Disabled Beneficiaries

Table 6.
Distribution, by sex and diagnostic group, December 2005—Continued

Diagnostic group	Total		Workers		Widow(er)s		Adult children	
	Number	Percent	Number	Percent	Number	Percent	Number	Percent
Women								
Subtotal	3,558,549	100.0	3,001,732	100.0	208,304	100.0	348,513	100.0
Congenital anomalies	9,766	0.3	5,320	0.2	264	0.1	4,182	1.2
Endocrine, nutritional, and metabolic diseases	162,288	4.6	143,114	4.8	17,708	8.5	1,466	0.4
Infectious and parasitic diseases	32,533	0.9	29,340	1.0	1,735	0.8	1,458	0.4
Injuries	93,635	2.6	85,612	2.9	5,027	2.4	2,996	0.9
Mental disorders								
Retardation	284,450	8.0	114,290	3.8	9,379	4.5	160,781	46.1
Other	1,010,171	28.4	918,854	30.6	49,165	23.6	42,152	12.1
Neoplasms	101,029	2.8	95,982	3.2	4,242	2.0	805	0.2
Diseases of the—								
Blood and blood-forming organs	10,304	0.3	8,985	0.3	344	0.2	975	0.3
Circulatory system	226,234	6.4	204,546	6.8	20,071	9.6	1,617	0.5
Digestive system	48,839	1.4	46,174	1.5	2,366	1.1	299	0.1
Genitourinary system	46,126	1.3	43,472	1.4	1,776	0.9	878	0.3
Musculoskeletal system and connective tissue	871,182	24.5	808,294	26.9	59,887	28.7	3,001	0.9
Nervous system and sense organs	361,225	10.2	313,189	10.4	15,084	7.2	32,952	9.5
Respiratory system	113,326	3.2	102,099	3.4	10,678	5.1	549	0.2
Skin and subcutaneous tissue	9,824	0.3	9,174	0.3	490	0.2	160	a
Other	7,841	0.2	7,012	0.2	253	0.1	576	0.2
Unknown	169,776	4.8	66,275	2.2	9,835	4.7	93,666	26.9

SOURCE: Social Security Administration, Disabled Beneficiaries and Dependents Master Beneficiary Record file, 100 percent data.

NOTE: The diagnosis for disabled adult children typically was not recorded on the Master Beneficiary Record until 1984. Many beneficiaries entitled before that date are still on the rolls today.

a. Less than 0.05 percent.

CONTACT: Kevin Kulzer (410) 965-5366 or di.asr@ssa.gov.

Table 7.
Average monthly benefit, by sex and diagnostic group, December 2005 (in dollars)

Diagnostic group	Total	Workers	Widow(er)s	Adult children
<i>All disabled beneficiaries</i>				
Total	895.60	938.00	609.30	616.30
Congenital anomalies	737.10	811.50	617.90	646.70
Endocrine, nutritional, and metabolic diseases	874.90	898.10	591.50	606.00
Infectious and parasitic diseases	912.00	926.40	598.20	579.60
Injuries	951.60	969.20	591.90	642.70
Mental disorders				
Retardation	619.00	634.50	548.20	606.70
Other	838.60	858.10	625.40	616.60
Neoplasms	1,075.30	1,090.40	623.50	634.60
Diseases of the—				
Blood and blood-forming organs	843.00	880.90	608.10	571.70
Circulatory system	1,055.60	1,073.20	608.70	634.30
Digestive system	980.20	991.40	624.40	602.20
Genitourinary system	973.90	986.80	610.00	587.50
Musculoskeletal system and connective tissue	982.90	998.10	609.90	604.70
Nervous system and sense organs	930.60	972.10	613.30	633.90
Respiratory system	966.40	986.70	627.30	579.90
Skin and subcutaneous tissue	897.60	912.30	607.70	581.10
Other	975.90	1,019.80	633.60	588.20
Unknown	739.50	913.30	591.90	626.10
<i>Men</i>				
Subtotal	1,003.50	1,051.20	441.10	613.70
Congenital anomalies	774.20	875.30	366.80	647.60
Endocrine, nutritional, and metabolic diseases	1,079.20	1,086.90	458.60	602.80
Infectious and parasitic diseases	960.30	968.70	464.80	569.30
Injuries	1,022.90	1,037.20	426.70	642.70
Mental disorders				
Retardation	637.50	670.00	374.90	602.50
Other	906.70	929.70	450.00	617.30
Neoplasms	1,254.70	1,263.40	448.30	631.50
Diseases of the—				
Blood and blood-forming organs	934.40	984.90	357.40	571.30
Circulatory system	1,194.40	1,199.00	467.70	626.40
Digestive system	1,117.00	1,121.70	450.60	592.60
Genitourinary system	1,074.50	1,083.00	468.90	578.50
Musculoskeletal system and connective tissue	1,157.20	1,160.30	435.30	599.60
Nervous system and sense organs	1,035.80	1,086.40	415.90	627.20
Respiratory system	1,172.50	1,177.60	455.30	572.10
Skin and subcutaneous tissue	1,033.90	1,042.70	404.60	587.20
Other	1,058.60	1,112.20	397.60	583.30
Unknown	783.20	1,013.30	421.30	626.20

(Continued)

All Disabled Beneficiaries

Table 7.
Average monthly benefit, by sex and diagnostic group, December 2005 (in dollars)—Continued

Diagnostic group	Total	Workers	Widow(er)s	Adult children
		<i>Women</i>		
Subtotal	776.00	805.30	615.40	619.30
Congenital anomalies	698.40	743.40	626.50	645.70
Endocrine, nutritional, and metabolic diseases	734.50	753.20	594.20	608.80
Infectious and parasitic diseases	786.80	807.30	605.70	591.20
Injuries	796.60	813.40	603.60	642.80
Mental disorders				
Retardation	593.20	570.40	554.80	611.60
Other	770.00	784.60	630.90	615.40
Neoplasms	914.90	929.80	629.90	638.70
Diseases of the—				
Blood and blood-forming organs	769.60	796.70	620.50	572.20
Circulatory system	798.20	817.20	617.00	643.40
Digestive system	825.60	836.70	634.70	612.60
Genitourinary system	829.30	842.60	619.70	597.40
Musculoskeletal system and connective tissue	812.40	827.70	615.60	608.60
Nervous system and sense organs	829.00	858.80	620.10	641.50
Respiratory system	781.80	798.40	632.80	586.40
Skin and subcutaneous tissue	805.90	820.10	614.30	577.00
Other	903.10	937.90	642.00	594.20
Unknown	696.90	811.70	598.50	626.00

SOURCE: Social Security Administration, Disabled Beneficiaries and Dependents Master Beneficiary Record file, 100 percent data.

NOTE: The diagnosis for disabled adult children typically was not recorded on the Master Beneficiary Record until 1984. Many beneficiaries entitled before that date are still on the rolls today.

CONTACT: Kevin Kulzer (410) 965-5366 or di.asr@ssa.gov.

Table 8.
Number aged 18–64 as a percentage of the resident population aged 18–64, by state,
December 2005

State	Resident population ^a	Beneficiaries	
		Number	Percentage of resident population
United States	186,150,307	7,116,707	3.8
Alabama	2,864,322	189,417	6.6
Alaska	431,311	10,440	2.4
Arizona	3,600,675	131,514	3.7
Arkansas	1,719,082	114,579	6.7
California	22,561,711	614,490	2.7
Colorado	3,019,556	78,294	2.6
Connecticut	2,201,141	73,484	3.3
Delaware	535,431	22,570	4.2
District of Columbia	370,476	11,046	3.0
Florida	10,728,827	431,525	4.0
Georgia	5,839,432	218,445	3.7
Hawaii	800,804	20,733	2.6
Idaho	890,999	31,979	3.6
Illinois	7,992,258	254,126	3.2
Indiana	3,891,620	159,596	4.1
Iowa	1,860,313	67,547	3.6
Kansas	1,713,397	59,489	3.5
Kentucky	2,667,481	179,035	6.7
Louisiana	2,844,396	128,227	4.5
Maine	851,505	50,689	6.0
Maryland	3,552,867	101,227	2.8
Massachusetts	4,087,881	169,154	4.1
Michigan	6,338,092	273,143	4.3
Minnesota	3,279,980	100,246	3.1
Mississippi	1,814,151	120,384	6.6
Missouri	3,648,907	178,416	4.9
Montana	601,842	22,642	3.8
Nebraska	1,093,608	36,731	3.4
Nevada	1,520,491	47,799	3.1
New Hampshire	843,684	35,786	4.2
New Jersey	5,426,768	172,605	3.2
New Mexico	1,204,000	49,741	4.1
New York	12,193,682	458,253	3.8
North Carolina	5,488,103	274,526	5.0
North Dakota	406,509	12,736	3.1
Ohio	7,175,500	278,233	3.9
Oklahoma	2,225,580	100,876	4.5
Oregon	2,321,206	82,582	3.6
Pennsylvania	7,720,030	331,884	4.3
Rhode Island	681,060	31,835	4.7

(Continued)

All Disabled Beneficiaries

Table 8.
Number aged 18–64 as a percentage of the resident population aged 18–64, by state,
December 2005—Continued

State	Resident population ^a	Beneficiaries	
		Number	Percentage of resident population
South Carolina	2,692,901	145,636	5.4
South Dakota	477,133	16,280	3.4
Tennessee	3,822,486	202,894	5.3
Texas	14,261,838	429,367	3.0
Utah	1,511,008	33,124	2.2
Vermont	408,449	17,700	4.3
Virginia	4,877,794	184,083	3.8
Washington	4,082,520	135,217	3.3
West Virginia	1,155,991	90,671	7.8
Wisconsin	3,518,573	125,251	3.6
Wyoming	332,936	10,460	3.1

SOURCES: Social Security Administration, Disabled Beneficiaries and Dependents Master Beneficiary Record file, 100 percent data; U.S. Census Bureau, 2005 estimates of resident population.

NOTE: Data exclude United States territories and other areas.

a. Population estimates for the United States as of July 1, 2005, as reported by the U.S. Census Bureau.

CONTACT: Kevin Kulzer (410) 965-5366 or di.asr@ssa.gov.

Table 9.
Distribution, by state or other area, December 2005

State or area	Total		Workers		Widow(er)s		Adult children	
	Number	Percent	Number	Percent	Number	Percent	Number	Percent
All areas	7,503,405	100.0	6,519,001	100.0	215,866	100.0	768,538	100.0
Alabama	193,985	2.6	169,574	2.6	6,969	3.2	17,442	2.3
Alaska	10,644	0.1	9,640	0.1	233	0.1	771	0.1
Arizona	134,584	1.8	122,207	1.9	3,181	1.5	9,196	1.2
Arkansas	117,523	1.6	104,081	1.6	4,086	1.9	9,356	1.2
California	630,032	8.4	551,529	8.5	14,379	6.7	64,124	8.3
Colorado	80,206	1.1	72,439	1.1	1,794	0.8	5,973	0.8
Connecticut	75,811	1.0	64,751	1.0	1,563	0.7	9,497	1.2
Delaware	23,121	0.3	20,676	0.3	517	0.2	1,928	0.3
District of Columbia	11,327	0.2	9,752	0.1	241	0.1	1,334	0.2
Florida	442,961	5.9	396,342	6.1	11,863	5.5	34,756	4.5
Georgia	224,316	3.0	196,010	3.0	7,582	3.5	20,724	2.7
Hawaii	21,398	0.3	18,522	0.3	505	0.2	2,371	0.3
Idaho	32,849	0.4	29,315	0.4	822	0.4	2,712	0.4
Illinois	261,607	3.5	221,848	3.4	7,440	3.4	32,319	4.2
Indiana	164,140	2.2	141,879	2.2	4,912	2.3	17,349	2.3
Iowa	69,800	0.9	59,475	0.9	1,698	0.8	8,627	1.1
Kansas	61,247	0.8	53,485	0.8	1,555	0.7	6,207	0.8
Kentucky	183,753	2.4	160,126	2.5	7,084	3.3	16,543	2.2
Louisiana	131,762	1.8	108,904	1.7	5,543	2.6	17,315	2.3
Maine	51,940	0.7	46,143	0.7	1,194	0.6	4,603	0.6
Maryland	103,958	1.4	90,603	1.4	2,420	1.1	10,935	1.4
Massachusetts	173,729	2.3	152,111	2.3	3,403	1.6	18,215	2.4
Michigan	280,842	3.7	239,212	3.7	8,131	3.8	33,499	4.4
Minnesota	103,264	1.4	89,819	1.4	1,807	0.8	11,638	1.5
Mississippi	123,361	1.6	106,630	1.6	4,714	2.2	12,017	1.6
Missouri	183,333	2.4	161,227	2.5	5,654	2.6	16,452	2.1
Montana	23,330	0.3	20,527	0.3	605	0.3	2,198	0.3
Nebraska	37,926	0.5	32,812	0.5	854	0.4	4,260	0.6
Nevada	49,047	0.7	45,182	0.7	1,211	0.6	2,654	0.3
New Hampshire	36,671	0.5	32,998	0.5	760	0.4	2,913	0.4
New Jersey	177,954	2.4	153,611	2.4	4,208	1.9	20,135	2.6
New Mexico	50,955	0.7	45,256	0.7	1,273	0.6	4,426	0.6
New York	472,955	6.3	403,614	6.2	12,188	5.6	57,153	7.4
North Carolina	282,420	3.8	249,640	3.8	8,757	4.1	24,023	3.1
North Dakota	13,283	0.2	10,994	0.2	298	0.1	1,991	0.3
Ohio	286,617	3.8	241,960	3.7	9,344	4.3	35,313	4.6
Oklahoma	103,768	1.4	90,867	1.4	3,471	1.6	9,430	1.2
Oregon	84,901	1.1	75,363	1.2	2,116	1.0	7,422	1.0
Pennsylvania	342,384	4.6	292,767	4.5	10,033	4.6	39,584	5.2
Rhode Island	32,735	0.4	28,843	0.4	718	0.3	3,174	0.4

(Continued)

All Disabled Beneficiaries

Table 9.
Distribution, by state or other area, December 2005—Continued

State or area	Total		Workers		Widow(er)s		Adult children	
	Number	Percent	Number	Percent	Number	Percent	Number	Percent
South Carolina	149,642	2.0	130,973	2.0	5,169	2.4	13,500	1.8
South Dakota	16,911	0.2	14,421	0.2	389	0.2	2,101	0.3
Tennessee	208,370	2.8	181,756	2.8	7,696	3.6	18,918	2.5
Texas	440,636	5.9	383,330	5.9	14,475	6.7	42,831	5.6
Utah	33,978	0.5	29,737	0.5	743	0.3	3,498	0.5
Vermont	18,205	0.2	15,845	0.2	439	0.2	1,921	0.2
Virginia	189,193	2.5	165,829	2.5	5,782	2.7	17,582	2.3
Washington	138,546	1.8	123,137	1.9	3,208	1.5	12,201	1.6
West Virginia	93,309	1.2	79,483	1.2	3,792	1.8	10,034	1.3
Wisconsin	129,146	1.7	110,319	1.7	2,748	1.3	16,079	2.1
Wyoming	10,740	0.1	9,606	0.1	235	0.1	899	0.1
Outlying areas								
American Samoa	1,232	a	1,085	a	53	a	94	a
Guam	1,305	a	1,140	a	32	a	133	a
Northern Mariana Islands	234	a	184	a	6	a	44	a
Puerto Rico	165,134	2.2	137,256	2.1	5,142	2.4	22,736	3.0
Virgin Islands	1,979	a	1,602	a	64	a	313	a
Foreign countries	18,406	0.2	12,564	0.2	767	0.4	5,075	0.7

SOURCE: Social Security Administration, Disabled Beneficiaries and Dependents Master Beneficiary Record file, 100 percent data.

a. Less than 0.05 percent.

CONTACT: Kevin Kulzer (410) 965-5366 or di.asr@ssa.gov.

Table 10.
Number, by state or other area and diagnostic group, December 2005

State or area	Total	Congenital anomalies	Endocrine, nutritional, and metabolic diseases	Infectious and parasitic diseases	Injuries	Mental disorders			Neoplasms
						Total	Retardation	Other	
All areas	7,503,405	19,965	273,771	116,867	296,987	2,708,103	679,947	2,028,156	191,291
Alabama	193,985	380	8,277	1,985	8,693	58,626	16,290	42,336	4,427
Alaska	10,644	27	306	126	508	3,899	836	3,063	307
Arizona	134,584	328	4,429	1,908	5,759	53,660	7,871	45,789	3,014
Arkansas	117,523	301	4,804	1,245	5,308	32,098	10,874	21,224	3,071
California	630,032	1,738	19,601	15,181	26,076	243,008	42,589	200,419	16,317
Colorado	80,206	316	2,463	1,300	3,885	26,455	6,182	20,273	2,170
Connecticut	75,811	206	2,389	1,194	2,265	32,996	7,886	25,110	2,002
Delaware	23,121	63	871	447	909	7,645	1,981	5,664	638
District of Columbia	11,327	14	361	711	273	4,837	1,324	3,513	198
Florida	442,961	1,255	16,885	12,209	21,748	146,486	28,430	118,056	12,762
Georgia	224,316	507	9,790	4,913	8,817	71,281	20,990	50,291	5,989
Hawaii	21,398	42	594	399	816	9,439	1,733	7,706	593
Idaho	32,849	100	1,084	267	1,542	12,371	2,680	9,691	859
Illinois	261,607	626	10,463	3,781	9,106	106,498	28,774	77,724	7,079
Indiana	164,140	366	7,566	1,759	5,574	60,813	18,683	42,130	4,391
Iowa	69,800	239	2,721	520	2,631	27,418	9,491	17,927	1,875
Kansas	61,247	180	2,719	604	2,753	22,360	6,992	15,368	1,606
Kentucky	183,753	384	6,265	1,443	6,381	66,072	16,970	49,102	3,784
Louisiana	131,762	295	4,905	1,910	5,610	38,073	15,476	22,597	3,116
Maine	51,940	155	1,534	369	1,886	22,066	4,352	17,714	1,093
Maryland	103,958	371	3,700	2,590	4,077	36,038	9,837	26,201	3,263
Massachusetts	173,729	563	4,236	2,817	5,758	82,260	13,791	68,469	4,117
Michigan	280,842	721	10,439	2,440	9,667	111,311	26,779	84,532	6,933
Minnesota	103,264	285	2,652	992	4,081	48,815	12,352	36,463	2,742
Mississippi	123,361	208	5,739	1,446	5,047	41,994	11,926	30,068	2,999
Missouri	183,333	550	8,166	2,226	8,068	59,885	17,744	42,141	4,436
Montana	23,330	77	663	180	1,238	7,964	2,072	5,892	550
Nebraska	37,926	125	1,465	387	1,727	12,893	4,145	8,748	1,011
Nevada	49,047	154	1,735	828	2,254	15,067	2,306	12,761	1,204
New Hampshire	36,671	98	871	262	1,321	16,696	2,645	14,051	846
New Jersey	177,954	465	5,309	3,213	6,460	63,954	14,539	49,415	5,484
New Mexico	50,955	161	1,768	606	2,622	17,935	3,800	14,135	1,057
New York	472,955	1,239	14,105	10,735	16,886	153,982	41,110	112,872	12,703
North Carolina	282,420	660	13,025	4,356	10,307	90,523	29,006	61,517	7,596
North Dakota	13,283	66	340	79	590	5,259	2,009	3,250	348
Ohio	286,617	885	10,530	2,605	8,647	127,716	35,024	92,692	6,660
Oklahoma	103,768	242	4,399	1,149	4,199	33,592	10,056	23,536	2,528
Oregon	84,901	249	2,792	1,086	4,140	29,981	7,005	22,976	2,310
Pennsylvania	342,384	1,045	12,793	4,198	14,231	116,302	34,497	81,805	9,123
Rhode Island	32,735	58	979	380	981	14,923	3,218	11,705	760

(Continued)

All Disabled Beneficiaries

Table 10.
Number, by state or other area and diagnostic group, December 2005—Continued

State or area	Diseases of the—								Other	Unknown
	Blood and blood-forming organs	Circulatory system	Digestive system	Genitourinary system	Musculoskeletal system and connective tissue	Nervous system and sense organs	Respiratory system	Skin and subcutaneous tissue		
All areas	18,592	645,583	104,059	112,442	1,724,107	710,202	214,847	16,433	14,751	335,405
Alabama	655	20,286	2,517	2,858	53,770	16,424	6,178	495	398	8,016
Alaska	22	708	176	124	2,688	1,152	278	25	32	266
Arizona	226	9,444	2,091	1,921	30,645	13,091	3,514	270	387	3,897
Arkansas	306	12,969	1,731	1,338	35,146	10,782	4,283	394	174	3,573
California	1,275	43,540	9,816	11,291	146,917	61,490	10,991	1,209	1,515	20,067
Colorado	136	4,578	1,277	1,057	19,967	10,691	2,658	164	189	2,900
Connecticut	161	5,287	956	986	13,582	7,269	1,802	182	127	4,407
Delaware	79	1,967	330	412	5,993	2,133	665	36	64	869
District of Columbia	51	832	83	407	1,624	1,120	229	40	18	529
Florida	1,361	42,331	7,790	6,771	98,864	37,900	13,125	1,725	924	20,825
Georgia	894	23,658	3,216	4,566	51,342	19,110	7,527	542	361	11,803
Hawaii	29	1,971	205	567	3,592	1,804	414	47	63	823
Idaho	31	2,149	451	330	7,996	3,639	917	71	62	980
Illinois	765	22,700	3,178	4,414	46,687	26,532	7,528	482	514	11,254
Indiana	418	15,193	2,499	2,262	31,783	17,000	6,251	290	318	7,657
Iowa	151	4,785	808	819	14,512	7,450	2,234	136	126	3,375
Kansas	143	4,680	924	820	13,065	6,607	2,046	110	122	2,508
Kentucky	304	16,738	2,237	1,663	48,498	13,460	6,974	344	333	8,873
Louisiana	473	14,844	1,661	2,278	35,358	11,358	3,359	366	271	7,885
Maine	61	3,576	623	347	12,512	4,386	1,335	160	93	1,744
Maryland	427	10,133	1,454	2,493	19,625	11,189	2,977	238	187	5,196
Massachusetts	303	10,085	2,329	1,561	32,720	15,775	3,818	247	361	6,779
Michigan	668	23,556	3,271	4,005	59,601	26,762	7,909	618	457	12,484
Minnesota	202	6,521	1,141	1,143	17,225	11,155	2,105	154	180	3,871
Mississippi	424	14,523	1,311	2,148	26,315	10,201	3,642	328	251	6,785
Missouri	446	16,083	2,909	2,332	46,457	17,535	6,569	390	321	6,960
Montana	32	1,408	314	245	6,035	2,803	773	45	58	945
Nebraska	69	3,036	491	551	8,784	4,371	1,264	58	57	1,637
Nevada	120	4,560	941	712	12,959	5,015	1,745	122	130	1,501
New Hampshire	45	2,424	469	276	7,427	3,622	1,055	50	74	1,135
New Jersey	523	16,601	2,771	3,059	37,672	18,788	4,725	389	464	8,077
New Mexico	95	2,983	848	791	13,652	5,181	1,408	139	135	1,574
New York	1,266	38,369	5,815	6,609	129,388	42,426	12,399	862	662	25,509
North Carolina	822	29,842	4,048	4,906	66,723	23,706	9,764	671	554	14,917
North Dakota	15	1,012	156	168	2,712	1,529	378	23	20	588
Ohio	609	22,772	2,968	3,930	46,587	25,255	8,980	442	361	17,670
Oklahoma	191	10,060	1,525	1,352	27,446	10,023	3,840	247	158	2,817
Oregon	160	5,621	1,452	932	20,630	10,475	2,301	174	161	2,437
Pennsylvania	782	30,945	5,275	4,543	81,662	33,623	9,733	574	985	16,570
Rhode Island	67	2,249	456	287	6,361	2,793	821	83	92	1,445

(Continued)

Table 10.
Number, by state or other area and diagnostic group, December 2005—Continued

State or area	Total	Congenital anomalies	Endocrine, nutritional, and metabolic diseases	Infectious and parasitic diseases	Injuries	Mental disorders			Neoplasms
						Total	Retardation	Other	
South Carolina	149,642	291	5,683	2,035	6,096	49,602	13,480	36,122	3,768
South Dakota	16,911	77	459	158	612	6,289	2,103	4,186	369
Tennessee	208,370	468	7,976	2,171	7,024	74,975	19,050	55,925	5,031
Texas	440,636	1,011	20,519	8,904	19,224	134,945	34,826	100,119	12,192
Utah	33,978	166	1,161	310	1,322	13,743	3,656	10,087	759
Vermont	18,205	80	601	180	752	7,556	1,614	5,942	436
Virginia	189,193	509	7,275	2,608	7,033	62,569	19,314	43,255	5,287
Washington	138,546	404	4,564	1,915	5,369	56,779	10,961	45,818	3,815
West Virginia	93,309	218	4,112	583	4,442	28,853	10,481	18,372	1,950
Wisconsin	129,146	557	4,484	1,209	4,916	51,562	14,426	37,136	3,200
Wyoming	10,740	42	298	101	573	3,717	1,062	2,655	249
Outlying areas									
American Samoa	1,232	a	162	a	43	130	49	81	24
Guam	1,305	a	24	11	59	360	127	233	36
Northern Mariana Islands	234	0	7	a	16	63	25	38	9
Puerto Rico	165,134	277	2,449	1,560	5,756	76,625	12,332	64,293	1,780
Virgin Islands	1,979	a	36	29	98	587	195	392	42
Foreign countries	18,406	111	228	237	811	6,557	1,981	4,576	383

(Continued)

All Disabled Beneficiaries

Table 10.
Number, by state or other area and diagnostic group, December 2005—Continued

State or area	Diseases of the—								Other	Unknown
	Blood and blood-forming organs	Circulatory system	Digestive system	Genito-urinary system	Musculo-skeletal system and connective tissue	Nervous system and sense organs	Respiratory system	Skin and subcutaneous tissue		
South Carolina	618	16,583	1,993	2,780	35,837	12,600	5,291	376	294	5,795
South Dakota	26	1,245	188	179	3,763	2,312	543	34	30	627
Tennessee	442	20,026	2,693	2,970	48,243	16,581	7,450	473	351	11,496
Texas	1,105	42,811	6,901	9,486	106,241	46,694	11,479	875	833	17,416
Utah	52	1,931	490	450	6,850	4,291	949	65	85	1,354
Vermont	37	1,137	235	124	3,877	1,668	518	41	47	916
Virginia	585	18,031	2,607	3,463	46,931	16,964	6,062	402	399	8,468
Washington	288	8,656	2,363	1,676	29,512	14,450	3,515	292	266	4,682
West Virginia	146	9,143	1,148	687	24,758	6,779	3,655	198	166	6,471
Wisconsin	291	8,988	1,639	1,672	25,631	14,773	3,061	218	232	6,713
Wyoming	16	741	162	126	2,611	1,349	446	18	34	257
Outlying areas										
American Samoa	a	125	10	23	471	130	41	26	12	24
Guam	a	192	17	66	280	171	35	a	18	24
Northern Mariana Islands	a	39	0	13	21	36	5	11	a	6
Puerto Rico	138	9,148	944	1,276	40,390	13,610	3,041	412	191	7,537
Virgin Islands	15	229	17	47	519	259	23	a	a	64
Foreign countries	18	1,539	139	130	3,650	1,910	219	39	28	2,407

SOURCE: Social Security Administration, Disabled Beneficiaries and Dependents Master Beneficiary Record file, 100 percent data.

NOTE: The diagnosis for disabled adult children typically was not recorded on the Master Beneficiary Record until 1984. Many beneficiaries entitled before that date are still on the rolls today.

a. Data not shown to avoid disclosure of information for particular individuals.

CONTACT: Kevin Kulzer (410) 965-5366 or di.asr@ssa.gov.

Table 11.
Percentage distribution, by state or other area and diagnostic group, December 2005

State or area	Total		Congenital anomalies	Endocrine, nutritional, and metabolic diseases	Infectious and parasitic diseases	Injuries	Mental disorders			Neoplasms
	Number	Percent					Total	Retardation	Other	
All areas	7,503,405	100.0	0.3	3.6	1.6	4.0	36.1	9.1	27.0	2.5
Alabama	193,985	100.0	0.2	4.3	1.0	4.5	30.2	8.4	21.8	2.3
Alaska	10,644	100.0	0.3	2.9	1.2	4.8	36.7	7.9	28.8	2.9
Arizona	134,584	100.0	0.2	3.3	1.4	4.3	39.8	5.8	34.0	2.2
Arkansas	117,523	100.0	0.3	4.1	1.1	4.5	27.4	9.3	18.1	2.6
California	630,032	100.0	0.3	3.1	2.4	4.1	38.6	6.8	31.8	2.6
Colorado	80,206	100.0	0.4	3.1	1.6	4.8	33.0	7.7	25.3	2.7
Connecticut	75,811	100.0	0.3	3.2	1.6	3.0	43.5	10.4	33.1	2.6
Delaware	23,121	100.0	0.3	3.8	1.9	3.9	33.1	8.6	24.5	2.8
District of Columbia	11,327	100.0	0.1	3.2	6.3	2.4	42.7	11.7	31.0	1.7
Florida	442,961	100.0	0.3	3.8	2.8	4.9	33.1	6.4	26.7	2.9
Georgia	224,316	100.0	0.2	4.4	2.2	3.9	31.8	9.4	22.4	2.7
Hawaii	21,398	100.0	0.2	2.8	1.9	3.8	44.1	8.1	36.0	2.8
Idaho	32,849	100.0	0.3	3.3	0.8	4.7	37.7	8.2	29.5	2.6
Illinois	261,607	100.0	0.2	4.0	1.4	3.5	40.7	11.0	29.7	2.7
Indiana	164,140	100.0	0.2	4.6	1.1	3.4	37.1	11.4	25.7	2.7
Iowa	69,800	100.0	0.3	3.9	0.7	3.8	39.3	13.6	25.7	2.7
Kansas	61,247	100.0	0.3	4.4	1.0	4.5	36.5	11.4	25.1	2.6
Kentucky	183,753	100.0	0.2	3.4	0.8	3.5	35.9	9.2	26.7	2.1
Louisiana	131,762	100.0	0.2	3.7	1.4	4.3	28.8	11.7	17.1	2.4
Maine	51,940	100.0	0.3	3.0	0.7	3.6	42.5	8.4	34.1	2.1
Maryland	103,958	100.0	0.4	3.6	2.5	3.9	34.7	9.5	25.2	3.1
Massachusetts	173,729	100.0	0.3	2.4	1.6	3.3	47.3	7.9	39.4	2.4
Michigan	280,842	100.0	0.3	3.7	0.9	3.4	39.6	9.5	30.1	2.5
Minnesota	103,264	100.0	0.3	2.6	1.0	4.0	47.3	12.0	35.3	2.7
Mississippi	123,361	100.0	0.2	4.7	1.2	4.1	34.1	9.7	24.4	2.4
Missouri	183,333	100.0	0.3	4.5	1.2	4.4	32.7	9.7	23.0	2.4
Montana	23,330	100.0	0.3	2.8	0.8	5.3	34.2	8.9	25.3	2.4
Nebraska	37,926	100.0	0.3	3.9	1.0	4.6	34.0	10.9	23.1	2.7
Nevada	49,047	100.0	0.3	3.5	1.7	4.6	30.7	4.7	26.0	2.5
New Hampshire	36,671	100.0	0.3	2.4	0.7	3.6	45.5	7.2	38.3	2.3
New Jersey	177,954	100.0	0.3	3.0	1.8	3.6	36.0	8.2	27.8	3.1
New Mexico	50,955	100.0	0.3	3.5	1.2	5.1	35.2	7.5	27.7	2.1
New York	472,955	100.0	0.3	3.0	2.3	3.6	32.6	8.7	23.9	2.7
North Carolina	282,420	100.0	0.2	4.6	1.5	3.6	32.1	10.3	21.8	2.7
North Dakota	13,283	100.0	0.5	2.6	0.6	4.4	39.6	15.1	24.5	2.6
Ohio	286,617	100.0	0.3	3.7	0.9	3.0	44.5	12.2	32.3	2.3
Oklahoma	103,768	100.0	0.2	4.2	1.1	4.0	32.4	9.7	22.7	2.4
Oregon	84,901	100.0	0.3	3.3	1.3	4.9	35.4	8.3	27.1	2.7
Pennsylvania	342,384	100.0	0.3	3.7	1.2	4.2	34.0	10.1	23.9	2.7
Rhode Island	32,735	100.0	0.2	3.0	1.2	3.0	45.6	9.8	35.8	2.3

(Continued)

All Disabled Beneficiaries

Table 11.
Percentage distribution, by state or other area and diagnostic group, December 2005—Continued

State or area	Diseases of the—								Other	Unknown
	Blood and blood-forming organs	Circulatory system	Digestive system	Genitourinary system	Musculoskeletal system and connective tissue	Nervous system and sense organs	Respiratory system	Skin and subcutaneous tissue		
All areas	0.2	8.6	1.4	1.5	23.0	9.5	2.9	0.2	0.2	4.5
Alabama	0.3	10.5	1.3	1.5	27.7	8.5	3.2	0.3	0.2	4.1
Alaska	0.2	6.7	1.7	1.2	25.3	10.8	2.6	0.2	0.3	2.5
Arizona	0.2	7.0	1.6	1.4	22.8	9.7	2.6	0.2	0.3	2.9
Arkansas	0.3	11.0	1.5	1.1	29.9	9.2	3.6	0.3	0.1	3.0
California	0.2	6.9	1.6	1.8	23.3	9.8	1.7	0.2	0.2	3.2
Colorado	0.2	5.7	1.6	1.3	24.9	13.3	3.3	0.2	0.2	3.6
Connecticut	0.2	7.0	1.3	1.3	17.9	9.6	2.4	0.2	0.2	5.8
Delaware	0.3	8.5	1.4	1.8	25.9	9.2	2.9	0.2	0.3	3.8
District of Columbia	0.5	7.3	0.7	3.6	14.3	9.9	2.0	0.4	0.2	4.7
Florida	0.3	9.6	1.8	1.5	22.3	8.6	3.0	0.4	0.2	4.7
Georgia	0.4	10.5	1.4	2.0	22.9	8.5	3.4	0.2	0.2	5.3
Hawaii	0.1	9.2	1.0	2.6	16.8	8.4	1.9	0.2	0.3	3.8
Idaho	0.1	6.5	1.4	1.0	24.3	11.1	2.8	0.2	0.2	3.0
Illinois	0.3	8.7	1.2	1.7	17.8	10.1	2.9	0.2	0.2	4.3
Indiana	0.3	9.3	1.5	1.4	19.4	10.4	3.8	0.2	0.2	4.7
Iowa	0.2	6.9	1.2	1.2	20.8	10.7	3.2	0.2	0.2	4.8
Kansas	0.2	7.6	1.5	1.3	21.3	10.8	3.3	0.2	0.2	4.1
Kentucky	0.2	9.1	1.2	0.9	26.4	7.3	3.8	0.2	0.2	4.8
Louisiana	0.4	11.3	1.3	1.7	26.8	8.6	2.5	0.3	0.2	6.0
Maine	0.1	6.9	1.2	0.7	24.1	8.4	2.6	0.3	0.2	3.4
Maryland	0.4	9.7	1.4	2.4	18.9	10.8	2.9	0.2	0.2	5.0
Massachusetts	0.2	5.8	1.3	0.9	18.8	9.1	2.2	0.1	0.2	3.9
Michigan	0.2	8.4	1.2	1.4	21.2	9.5	2.8	0.2	0.2	4.4
Minnesota	0.2	6.3	1.1	1.1	16.7	10.8	2.0	0.1	0.2	3.7
Mississippi	0.3	11.8	1.1	1.7	21.3	8.3	3.0	0.3	0.2	5.5
Missouri	0.2	8.8	1.6	1.3	25.3	9.6	3.6	0.2	0.2	3.8
Montana	0.1	6.0	1.3	1.1	25.9	12.0	3.3	0.2	0.2	4.1
Nebraska	0.2	8.0	1.3	1.5	23.2	11.5	3.3	0.2	0.2	4.3
Nevada	0.2	9.3	1.9	1.5	26.4	10.2	3.6	0.2	0.3	3.1
New Hampshire	0.1	6.6	1.3	0.8	20.3	9.9	2.9	0.1	0.2	3.1
New Jersey	0.3	9.3	1.6	1.7	21.2	10.6	2.7	0.2	0.3	4.5
New Mexico	0.2	5.9	1.7	1.6	26.8	10.2	2.8	0.3	0.3	3.1
New York	0.3	8.1	1.2	1.4	27.4	9.0	2.6	0.2	0.1	5.4
North Carolina	0.3	10.6	1.4	1.7	23.6	8.4	3.5	0.2	0.2	5.3
North Dakota	0.1	7.6	1.2	1.3	20.4	11.5	2.8	0.2	0.2	4.4
Ohio	0.2	7.9	1.0	1.4	16.3	8.8	3.1	0.2	0.1	6.2
Oklahoma	0.2	9.7	1.5	1.3	26.4	9.7	3.7	0.2	0.2	2.7
Oregon	0.2	6.6	1.7	1.1	24.3	12.3	2.7	0.2	0.2	2.9
Pennsylvania	0.2	9.0	1.5	1.3	23.9	9.8	2.8	0.2	0.3	4.8
Rhode Island	0.2	6.9	1.4	0.9	19.4	8.5	2.5	0.3	0.3	4.4

(Continued)

Table 11.
Percentage distribution, by state or other area and diagnostic group, December 2005—Continued

State or area	Total		Congenital anomalies	Endocrine, nutritional, and metabolic diseases	Infectious and parasitic diseases	Injuries	Mental disorders			Neoplasms
	Number	Percent					Total	Retardation	Other	
South Carolina	149,642	100.0	0.2	3.8	1.4	4.1	33.1	9.0	24.1	2.5
South Dakota	16,911	100.0	0.5	2.7	0.9	3.6	37.2	12.4	24.8	2.2
Tennessee	208,370	100.0	0.2	3.8	1.0	3.4	35.9	9.1	26.8	2.4
Texas	440,636	100.0	0.2	4.7	2.0	4.4	30.6	7.9	22.7	2.8
Utah	33,978	100.0	0.5	3.4	0.9	3.9	40.5	10.8	29.7	2.2
Vermont	18,205	100.0	0.4	3.3	1.0	4.1	41.5	8.9	32.6	2.4
Virginia	189,193	100.0	0.3	3.8	1.4	3.7	33.1	10.2	22.9	2.8
Washington	138,546	100.0	0.3	3.3	1.4	3.9	41.0	7.9	33.1	2.8
West Virginia	93,309	100.0	0.2	4.4	0.6	4.8	30.9	11.2	19.7	2.1
Wisconsin	129,146	100.0	0.4	3.5	0.9	3.8	40.0	11.2	28.8	2.5
Wyoming	10,740	100.0	0.4	2.8	0.9	5.3	34.6	9.9	24.7	2.3
Outlying areas										
American Samoa	1,232	100.0	a	13.1	a	3.5	10.6	4.0	6.6	1.9
Guam	1,305	100.0	a	1.8	0.8	4.5	27.6	9.7	17.9	2.8
Northern Mariana Islands	234	100.0	0	3.0	a	6.8	26.9	10.7	16.2	3.8
Puerto Rico	165,134	100.0	0.2	1.5	0.9	3.5	46.4	7.5	38.9	1.1
Virgin Islands	1,979	100.0	a	1.8	1.5	5.0	29.7	9.9	19.8	2.1
Foreign countries	18,406	100.0	0.6	1.2	1.3	4.4	35.7	10.8	24.9	2.1

(Continued)

All Disabled Beneficiaries

Table 11.
Percentage distribution, by state or other area and diagnostic group, December 2005—Continued

State or area	Diseases of the—								Other	Unknown
	Blood and blood-forming organs	Circulatory system	Digestive system	Genitourinary system	Musculoskeletal system and connective tissue	Nervous system and sense organs	Respiratory system	Skin and subcutaneous tissue		
South Carolina	0.4	11.1	1.3	1.9	23.9	8.4	3.5	0.3	0.2	3.9
South Dakota	0.2	7.4	1.1	1.1	22.3	13.7	3.2	0.2	0.2	3.7
Tennessee	0.2	9.6	1.3	1.4	23.2	8.0	3.6	0.2	0.2	5.5
Texas	0.3	9.7	1.6	2.2	24.1	10.6	2.6	0.2	0.2	4.0
Utah	0.2	5.7	1.4	1.3	20.2	12.6	2.8	0.2	0.3	4.0
Vermont	0.2	6.2	1.3	0.7	21.3	9.2	2.8	0.2	0.3	5.0
Virginia	0.3	9.5	1.4	1.8	24.8	9.0	3.2	0.2	0.2	4.5
Washington	0.2	6.2	1.7	1.2	21.3	10.4	2.5	0.2	0.2	3.4
West Virginia	0.2	9.8	1.2	0.7	26.5	7.3	3.9	0.2	0.2	6.9
Wisconsin	0.2	7.0	1.3	1.3	19.8	11.4	2.4	0.2	0.2	5.2
Wyoming	0.1	6.9	1.5	1.2	24.3	12.6	4.2	0.2	0.3	2.4
Outlying areas										
American Samoa	a	10.1	0.8	1.9	38.2	10.6	3.3	2.1	1.0	1.9
Guam	a	14.7	1.3	5.1	21.5	13.1	2.7	a	1.4	1.8
Northern Mariana Islands	a	16.7	0	5.6	9.0	15.4	2.1	4.7	a	2.6
Puerto Rico	0.1	5.5	0.6	0.8	24.5	8.2	1.8	0.2	0.1	4.6
Virgin Islands	0.8	11.6	0.9	2.4	26.2	13.1	1.2	a	a	3.2
Foreign countries	0.1	8.4	0.8	0.7	19.8	10.4	1.2	0.2	0.2	13.1

SOURCE: Social Security Administration, Disabled Beneficiaries and Dependents Master Beneficiary Record file, 100 percent data.

NOTE: The diagnosis for disabled adult children typically was not recorded on the Master Beneficiary Record until 1984. Many beneficiaries entitled before that date are still on the rolls today.

a. Data not shown to avoid disclosure of information for particular individuals.

CONTACT: Kevin Kulzer (410) 965-5366 or di.asr@ssa.gov.

Table 12.
Number receiving Social Security disability benefits because of blindness or deafness,
by state or other area, December 2005

State or area	Blind				Deaf			
	Total	Workers	Widow(er)s	Adult children	Total	Workers	Widow(er)s	Adult children
All areas	106,957	94,103	2,282	10,572	60,894	51,235	1,070	8,589
Alabama	2,565	2,286	65	214	1,474	1,225	31	218
Alaska	156	147	a	a	114	103	a	a
Arizona	1,763	1,577	42	144	1,092	967	9	116
Arkansas	1,528	1,341	34	153	845	711	24	110
California	9,577	8,306	173	1,098	5,164	4,232	67	865
Colorado	1,031	926	15	90	815	735	12	68
Connecticut	1,184	1,006	24	154	696	591	7	98
Delaware	312	287	a	a	174	153	a	a
District of Columbia	186	168	a	a	279	232	a	a
Florida	5,035	4,517	122	396	4,107	3,474	55	578
Georgia	3,509	3,136	86	287	1,679	1,347	41	291
Hawaii	314	272	a	a	194	167	a	a
Idaho	471	420	7	44	209	187	a	a
Illinois	4,137	3,643	90	404	2,199	1,874	31	294
Indiana	2,709	2,449	45	215	1,479	1,284	30	165
Iowa	991	863	12	116	601	536	8	57
Kansas	1,040	935	19	86	599	539	6	54
Kentucky	2,320	1,980	65	275	1,278	1,051	33	194
Louisiana	2,033	1,744	60	229	1,098	779	45	274
Maine	529	464	5	60	323	293	a	a
Maryland	1,499	1,334	25	140	1,262	1,101	10	151
Massachusetts	2,751	2,217	44	490	1,194	1,029	15	150
Michigan	3,336	2,850	61	425	1,979	1,670	32	277
Minnesota	1,617	1,425	21	171	1,028	936	11	81
Mississippi	2,025	1,838	39	148	906	738	25	143
Missouri	2,615	2,329	52	234	1,308	1,141	18	149
Montana	287	259	7	21	176	152	a	a
Nebraska	566	510	5	51	324	298	7	19
Nevada	760	677	14	69	381	323	8	50
New Hampshire	359	309	9	41	221	194	6	21
New Jersey	2,635	2,345	45	245	1,500	1,288	23	189
New Mexico	809	701	23	85	403	343	14	46
New York	5,801	5,023	109	669	3,826	3,199	59	568
North Carolina	3,853	3,438	93	322	1,970	1,710	39	221
North Dakota	157	137	0	20	85	79	0	6
Ohio	4,243	3,781	106	356	2,488	2,115	56	317
Oklahoma	1,712	1,530	40	142	877	745	26	106
Oregon	1,453	1,262	25	166	870	750	13	107
Pennsylvania	4,650	4,086	87	477	2,496	2,097	47	352
Rhode Island	370	323	8	39	216	187	a	a

(Continued)

All Disabled Beneficiaries

Table 12.
Number receiving Social Security disability benefits because of blindness or deafness,
by state or other area, December 2005—Continued

State or area	Blind				Deaf			
	Total	Workers	Widow(er)s	Adult children	Total	Workers	Widow(er)s	Adult children
South Carolina	2,658	2,352	91	215	965	798	16	151
South Dakota	257	223	a	a	171	155	a	a
Tennessee	3,224	2,871	81	272	1,474	1,239	36	199
Texas	8,244	7,427	190	627	4,371	3,709	57	605
Utah	625	555	8	62	387	356	6	25
Vermont	177	156	a	a	128	112	a	a
Virginia	2,314	2,035	52	227	1,268	1,080	26	162
Washington	1,708	1,493	30	185	1,182	1,007	22	153
West Virginia	991	847	30	114	533	431	13	89
Wisconsin	1,550	1,360	24	166	1,092	959	15	118
Wyoming	119	108	a	a	68	63	0	5
Outlying areas								
Puerto Rico	1,802	1,518	63	221	1,133	637	30	466
Other ^b	105	94	a	a	59	42	a	a
Foreign countries	295	223	12	60	134	72	13	49

SOURCE: Social Security Administration, Disabled Beneficiaries and Dependents Master Beneficiary Record file, 100 percent data.

NOTE: The diagnosis for disabled adult children typically was not recorded on the Master Beneficiary Record until 1984. Many beneficiaries entitled before that date are still on the rolls today.

a. Data not shown to avoid disclosure of information for particular individuals.

b. Includes American Samoa, Guam, Northern Mariana Islands, and Virgin Islands.

CONTACT: Kevin Kulzer (410) 965-5366 or di.asr@ssa.gov.

Table 13.
Total monthly benefits, by state or other area, December 2005 (in thousands of dollars)

State or area	Total	Workers	Widow(er)s	Adult children
All areas	6,718,159	6,113,106	131,508	473,545
Alabama	168,386	154,607	3,978	9,801
Alaska	9,548	8,915	159	473
Arizona	126,438	118,552	2,029	5,856
Arkansas	100,115	92,784	2,253	5,078
California	578,489	528,323	9,474	40,692
Colorado	72,408	67,518	1,111	3,779
Connecticut	70,641	63,178	950	6,513
Delaware	21,927	20,332	311	1,284
District of Columbia	9,029	8,167	139	723
Florida	400,067	371,823	6,924	21,320
Georgia	197,098	181,030	4,183	11,884
Hawaii	19,762	17,939	331	1,492
Idaho	29,033	26,823	538	1,672
Illinois	240,046	213,696	4,791	21,558
Indiana	147,992	133,269	3,111	11,612
Iowa	59,909	53,343	1,020	5,547
Kansas	53,690	48,764	940	3,985
Kentucky	160,904	147,348	4,420	9,137
Louisiana	115,851	102,521	3,593	9,737
Maine	43,243	39,877	693	2,674
Maryland	96,263	87,583	1,547	7,133
Massachusetts	154,676	141,038	2,094	11,544
Michigan	266,406	237,670	5,613	23,122
Minnesota	91,827	83,231	1,110	7,485
Mississippi	102,857	94,047	2,619	6,190
Missouri	160,769	147,381	3,301	10,087
Montana	20,364	18,611	370	1,383
Nebraska	32,130	29,015	488	2,627
Nevada	47,534	44,966	785	1,784
New Hampshire	33,586	31,267	439	1,880
New Jersey	173,650	157,146	2,638	13,866
New Mexico	44,159	40,898	813	2,448
New York	444,313	398,965	7,587	37,761
North Carolina	247,320	229,150	4,481	13,688
North Dakota	10,903	9,547	168	1,189
Ohio	251,324	222,069	6,172	23,083
Oklahoma	91,042	83,376	2,074	5,592
Oregon	77,289	71,028	1,373	4,888
Pennsylvania	310,357	278,220	6,439	25,697
Rhode Island	28,553	26,177	409	1,968

(Continued)

All Disabled Beneficiaries

Table 13.
Total monthly benefits, by state or other area, December 2005 (in thousands of dollars)—Continued

State or area	Total	Workers	Widow(er)s	Adult children
South Carolina	132,682	122,215	2,727	7,740
South Dakota	13,854	12,428	217	1,209
Tennessee	179,088	163,997	4,277	10,814
Texas	389,039	354,977	8,944	25,119
Utah	30,344	27,585	487	2,272
Vermont	15,407	14,000	246	1,162
Virginia	170,514	156,626	3,471	10,417
Washington	127,434	117,153	2,151	8,131
West Virginia	86,604	78,255	2,564	5,785
Wisconsin	115,323	103,060	1,673	10,590
Wyoming	9,677	8,948	143	585
Outlying areas				
American Samoa	844	777	26	41
Guam	1,006	931	18	57
Northern Mariana Islands	128	111	2	15
Puerto Rico	121,437	109,913	2,588	8,936
Virgin Islands	1,700	1,498	41	161
Foreign countries	13,180	10,437	464	2,278

SOURCE: Social Security Administration, Disabled Beneficiaries and Dependents Master Beneficiary Record file, 100 percent data.

NOTES: Unnegotiated checks not deducted.

Data exclude lump-sum death payments.

CONTACT: Kevin Kulzer (410) 965-5366 or di.asr@ssa.gov.

Table 14.
Number, by type of representative payee, December 2005

Type of payee	Total	Workers	Widow(er)s	Adult children
All disabled beneficiaries	7,503,405	6,519,001	215,866	768,538
Without payee	6,123,879	5,753,163	201,842	168,874
With payee				
Parent (natural, adoptive, or stepparent)	466,911	224,005	562	242,344
Spouse	146,382	145,561	88	733
Child (natural, adoptive, or stepchild)	50,884	43,216	6,156	1,512
Other relative	265,619	137,456	3,229	124,934
Nonmental institution	134,938	57,547	1,559	75,832
Mental institution	99,986	28,367	318	71,301
Social agency	96,023	46,825	661	48,537
Public official	10,743	6,706	130	3,907
Financial organization	4,446	3,228	40	1,178
Other	103,594	72,927	1,281	29,386

SOURCE: Social Security Administration, Disabled Beneficiaries and Dependents Master Beneficiary Record file, 100 percent data.

CONTACT: Kevin Kulzer (410) 965-5366 or di.asr@ssa.gov.

All Disabled Beneficiaries

Table 15.
Representative payment, by sex and diagnostic group, December 2005

Diagnostic group	Workers			Widow(er)s			Adult children		
	Total	Number with payee	Percentage with payee	Total	Number with payee	Percentage with payee	Total	Number with payee	Percentage with payee
All disabled beneficiaries									
Total	6,519,001	765,838	11.7	215,866	14,024	6.5	768,538	599,664	78.0
Congenital anomalies	11,001	1,512	13.7	273	7	2.6	8,691	5,951	68.5
Endocrine, nutritional, and metabolic diseases	252,933	4,175	1.7	18,072	284	1.6	2,766	695	25.1
Infectious and parasitic diseases	111,927	3,602	3.2	1,833	56	3.1	3,107	1,773	57.1
Injuries	281,828	24,522	8.7	5,383	168	3.1	9,776	3,867	39.6
Mental disorders									
Retardation	320,564	177,480	55.4	9,737	2,524	25.9	349,646	308,409	88.2
Other	1,862,618	450,754	24.2	50,708	7,979	15.7	114,830	74,220	64.6
Neoplasms	185,049	2,947	1.6	4,395	70	1.6	1,847	1,024	55.4
Diseases of the—									
Blood and blood-forming organs	16,270	361	2.2	361	7	1.9	1,961	351	17.9
Circulatory system	620,852	31,058	5.0	21,242	847	4.0	3,489	1,682	48.2
Digestive system	100,934	2,820	2.8	2,505	64	2.6	620	123	19.8
Genitourinary system	108,701	1,334	1.2	1,899	40	2.1	1,842	372	20.2
Musculoskeletal system and connective tissue	1,656,997	17,326	1.0	61,844	577	0.9	5,266	1,086	20.6
Nervous system and sense organs	623,948	29,347	4.7	15,607	608	3.9	70,647	37,262	52.7
Respiratory system	202,821	2,561	1.3	11,021	132	1.2	1,005	332	33.0
Skin and subcutaneous tissue	15,662	197	1.3	506	5	1.0	265	50	18.9
Other	13,225	565	4.3	262	8	3.1	1,264	809	64.0
Unknown	133,671	15,277	11.4	10,218	648	6.3	191,516	161,658	84.4
Men									
Subtotal	3,517,269	501,265	14.3	7,562	578	7.6	420,025	335,226	79.8
Congenital anomalies	5,681	894	15.7	9	0	0	4,509	3,186	70.7
Endocrine, nutritional, and metabolic diseases	109,819	2,382	2.2	364	13	3.6	1,300	379	29.2
Infectious and parasitic diseases	82,587	2,887	3.5	98	a	a	1,649	982	59.6
Injuries	196,216	18,759	9.6	356	16	4.5	6,780	2,653	39.1
Mental disorders									
Retardation	206,274	117,629	57.0	358	97	27.1	188,865	169,953	90.0
Other	943,764	290,987	30.8	1,543	286	18.5	72,678	50,113	69.0
Neoplasms	89,067	1,784	2.0	153	5	3.3	1,042	595	57.1
Diseases of the—									
Blood and blood-forming organs	7,285	222	3.0	17	0	0	986	217	22.0
Circulatory system	416,306	20,137	4.8	1,171	53	4.5	1,872	951	50.8
Digestive system	54,760	2,089	3.8	139	8	5.8	321	70	21.8
Genitourinary system	65,229	890	1.4	123	a	a	964	211	21.9
Musculoskeletal system and connective tissue	848,703	11,308	1.3	1,957	27	1.4	2,265	604	26.7
Nervous system and sense organs	310,759	18,245	5.9	523	23	4.4	37,695	20,587	54.6
Respiratory system	100,722	1,655	1.6	343	10	2.9	456	194	42.5
Skin and subcutaneous tissue	6,488	111	1.7	16	0	0	105	28	26.7
Other	6,213	401	6.5	9	0	0	688	466	67.7
Unknown	67,396	10,885	16.2	383	33	8.6	97,850	84,037	85.9

(Continued)

Table 15.
Representative payment, by sex and diagnostic group, December 2005—Continued

Diagnostic group	Workers			Widow(er)s			Adult children		
	Total	Number with payee	Percentage with payee	Total	Number with payee	Percentage with payee	Total	Number with payee	Percentage with payee
Women									
Subtotal	3,001,732	264,573	8.8	208,304	13,446	6.5	348,513	264,438	75.9
Congenital anomalies	5,320	618	11.6	264	7	2.7	4,182	2,765	66.1
Endocrine, nutritional, and metabolic diseases	143,114	1,793	1.3	17,708	271	1.5	1,466	316	21.6
Infectious and parasitic diseases	29,340	715	2.4	1,735	a	a	1,458	791	54.3
Injuries	85,612	5,763	6.7	5,027	152	3.0	2,996	1,214	40.5
Mental disorders									
Retardation	114,290	59,851	52.4	9,379	2,427	25.9	160,781	138,456	86.1
Other	918,854	159,767	17.4	49,165	7,693	15.6	42,152	24,107	57.2
Neoplasms	95,982	1,163	1.2	4,242	65	1.5	805	429	53.3
Diseases of the—									
Blood and blood-forming organs	8,985	139	1.5	344	7	2.0	975	134	13.7
Circulatory system	204,546	10,921	5.3	20,071	794	4.0	1,617	731	45.2
Digestive system	46,174	731	1.6	2,366	56	2.4	299	53	17.7
Genitourinary system	43,472	444	1.0	1,776	a	a	878	161	18.3
Musculoskeletal system and connective tissue	808,294	6,018	0.7	59,887	550	0.9	3,001	482	16.1
Nervous system and sense organs	313,189	11,102	3.5	15,084	585	3.9	32,952	16,675	50.6
Respiratory system	102,099	906	0.9	10,678	122	1.1	549	138	25.1
Skin and subcutaneous tissue	9,174	86	0.9	490	5	1.0	160	22	13.8
Other	7,012	164	2.3	253	8	3.2	576	343	59.5
Unknown	66,275	4,392	6.6	9,835	615	6.3	93,666	77,621	82.9

SOURCE: Social Security Administration, Disabled Beneficiaries and Dependents Master Beneficiary Record file, 100 percent data.

NOTE: The diagnosis for disabled adult children typically was not recorded on the Master Beneficiary Record until 1984. Many beneficiaries entitled before that date are still on the rolls today.

a. Data not shown to avoid disclosure of information for particular individuals.

CONTACT: Kevin Kulzer (410) 965-5366 or di.asr@ssa.gov.

All Disabled Beneficiaries

Table 16.
Percentage distribution of disabled workers, by state or other area and monthly benefit,
December 2005

State or area	Number	Percentage distribution by dollar amount of monthly benefit							Monthly benefit (dollars)	
		Total	Less than 400.00	400.00–599.90	600.00–799.90	800.00–999.90	1,000.00–1,199.90	1,200.00–or more	Average	Median
All areas	6,519,001	100.0	6.5	13.5	23.2	18.4	13.3	25.1	938.00	869.70
Alabama	169,574	100.0	6.3	14.1	25.2	19.5	13.0	22.0	912.00	840.00
Alaska	9,640	100.0	7.7	14.7	23.7	16.9	12.6	24.4	925.00	840.00
Arizona	122,207	100.0	5.4	12.0	22.3	18.5	14.1	27.7	970.30	905.00
Arkansas	104,081	100.0	6.4	14.3	25.2	20.6	14.1	19.4	891.70	836.00
California	551,529	100.0	7.3	13.4	21.4	16.9	12.9	28.0	958.10	886.50
Colorado	72,439	100.0	6.1	14.0	23.4	18.7	13.5	24.4	932.30	863.00
Connecticut	64,751	100.0	5.1	12.1	22.3	18.6	13.7	28.1	976.00	906.00
Delaware	20,676	100.0	5.4	11.7	21.7	18.4	14.0	28.8	983.60	917.50
District of Columbia	9,752	100.0	7.9	17.1	28.1	19.9	12.1	14.8	837.60	773.00
Florida	396,342	100.0	5.8	13.3	23.7	19.0	13.7	24.6	938.40	869.00
Georgia	196,010	100.0	5.6	13.1	24.3	20.5	14.4	22.3	923.80	861.90
Hawaii	18,522	100.0	5.1	12.6	21.8	18.3	15.0	27.2	968.80	909.30
Idaho	29,315	100.0	7.5	14.7	23.1	17.5	13.4	23.6	915.20	847.00
Illinois	221,848	100.0	6.4	12.9	22.0	17.6	13.2	27.9	963.50	892.00
Indiana	141,879	100.0	6.6	13.5	22.9	18.3	13.3	25.2	939.60	870.50
Iowa	59,475	100.0	8.0	15.1	24.1	17.8	12.7	22.3	897.10	827.50
Kansas	53,485	100.0	6.9	14.5	23.9	18.5	13.5	22.7	912.00	844.50
Kentucky	160,126	100.0	7.6	14.6	23.0	17.6	12.7	24.5	920.50	849.00
Louisiana	108,904	100.0	7.8	13.6	22.4	16.8	12.3	27.1	941.60	866.50
Maine	46,143	100.0	7.3	15.9	26.8	19.7	12.6	17.7	864.40	799.50
Maryland	90,603	100.0	5.8	12.2	22.1	18.5	14.1	27.3	966.90	901.00
Massachusetts	152,111	100.0	5.7	13.7	24.7	19.4	13.2	23.3	927.40	853.00
Michigan	239,212	100.0	7.0	12.7	20.4	15.6	12.3	32.1	993.80	921.40
Minnesota	89,819	100.0	6.7	14.2	23.8	18.4	12.6	24.2	926.90	851.50
Mississippi	106,630	100.0	6.3	14.5	26.8	20.4	13.1	18.8	882.20	818.50
Missouri	161,227	100.0	6.8	14.2	24.3	18.8	13.1	22.8	914.40	844.00
Montana	20,527	100.0	6.9	15.3	23.8	18.3	12.8	22.9	906.90	839.50
Nebraska	32,812	100.0	7.3	15.4	25.2	18.9	13.4	19.8	884.50	819.00
Nevada	45,182	100.0	4.5	10.9	21.7	18.8	14.6	29.4	995.50	931.20
New Hampshire	32,998	100.0	4.7	12.0	23.9	20.7	14.6	24.1	947.80	884.00
New Jersey	153,611	100.0	4.7	11.2	20.5	17.6	13.5	32.6	1,023.30	950.50
New Mexico	45,256	100.0	7.6	14.3	23.9	18.7	13.4	22.0	903.90	839.00
New York	403,614	100.0	6.2	12.7	21.0	16.9	12.9	30.3	988.80	913.00
North Carolina	249,640	100.0	5.2	12.7	24.4	21.8	15.1	20.8	918.20	864.50
North Dakota	10,994	100.0	7.8	16.7	25.4	18.6	12.2	19.4	868.70	801.00
Ohio	241,960	100.0	8.5	15.3	22.3	16.5	12.2	25.3	918.10	841.50
Oklahoma	90,867	100.0	7.1	14.1	23.2	18.0	13.8	23.7	917.80	855.50
Oregon	75,363	100.0	6.5	14.1	22.5	17.7	13.0	26.2	942.70	870.00
Pennsylvania	292,767	100.0	6.7	12.9	22.2	18.0	13.6	26.7	950.50	884.50
Rhode Island	28,843	100.0	5.9	14.5	25.5	19.6	12.9	21.6	907.80	834.00

(Continued)

Table 16.
Percentage distribution of disabled workers, by state or other area and monthly benefit,
December 2005—Continued

State or area	Number	Percentage distribution by dollar amount of monthly benefit							Monthly benefit (dollars)	
		Total	Less than 400.00	400.00–599.90	600.00–799.90	800.00–999.90	1,000.00–1,199.90	1,200.00–or more	Average	Median
South Carolina	130,973	100.0	5.0	12.0	23.7	21.5	15.3	22.4	933.40	880.00
South Dakota	14,421	100.0	8.5	16.5	25.5	18.3	12.9	18.3	862.00	795.50
Tennessee	181,756	100.0	6.0	14.1	25.3	20.2	13.8	20.6	902.50	839.00
Texas	383,330	100.0	7.2	13.6	23.1	18.5	13.5	24.0	926.30	860.50
Utah	29,737	100.0	7.1	15.1	23.4	16.9	12.3	25.2	927.90	844.50
Vermont	15,845	100.0	6.8	15.0	25.3	20.2	13.7	19.1	883.80	824.00
Virginia	165,829	100.0	5.9	12.6	22.9	19.3	14.1	25.1	944.80	881.00
Washington	123,137	100.0	6.6	13.7	22.6	17.3	12.7	27.1	951.60	872.50
West Virginia	79,483	100.0	7.5	12.7	19.7	15.9	12.8	31.4	984.80	921.50
Wisconsin	110,319	100.0	7.0	14.0	22.9	17.6	13.0	25.5	934.40	863.50
Wyoming	9,606	100.0	7.3	15.0	23.2	16.2	12.5	25.8	931.80	848.50
Outlying areas										
American Samoa	1,085	100.0	13.0	23.3	30.5	17.0	a	a	716.20	676.50
Guam	1,140	100.0	12.2	15.3	27.1	17.6	12.9	14.9	816.70	762.80
Northern Mariana Islands	184	100.0	21.2	34.2	26.6	9.8	a	a	601.90	582.30
Puerto Rico	137,256	100.0	5.4	16.9	36.0	21.3	10.3	10.1	801.10	747.50
Virgin Islands	1,602	100.0	5.5	12.5	23.3	20.0	15.3	23.4	935.80	880.00
Foreign countries	12,564	100.0	15.5	14.0	21.2	17.2	12.9	19.3	830.80	792.50

SOURCE: Social Security Administration, Disabled Beneficiaries and Dependents Master Beneficiary Record file, 100 percent data.

a. Data not shown to avoid disclosure of information for particular individuals.

CONTACT: Kevin Kulzer (410) 965-5366 or di.asr@ssa.gov.

All Disabled Beneficiaries

Table 17.
Percentage distribution of disabled widow(er)s, by state or other area and monthly benefit,
December 2005

State or area	Number	Percentage distribution by dollar amount of monthly benefit										Monthly benefit (dollars)	
		Total	Less than 200.00	200.00–299.90	300.00–399.90	400.00–499.90	500.00–599.90	600.00–699.90	700.00–799.90	800.00–899.90	900.00 or more	Average	Median
All areas	215,866	100.0	9.2	8.4	10.1	12.6	12.1	10.9	9.5	7.7	19.6	609.30	582.10
Alabama	6,969	100.0	10.9	9.5	10.4	12.9	12.3	12.2	9.9	7.1	14.7	571.00	547.00
Alaska	233	100.0	4.3	6.4	8.6	12.0	10.3	11.6	9.9	6.4	30.5	684.50	669.00
Arizona	3,181	100.0	7.8	8.0	9.0	12.6	12.0	9.8	9.5	8.8	22.5	638.00	605.00
Arkansas	4,086	100.0	12.4	10.2	11.1	12.1	13.0	11.9	8.7	6.7	13.9	551.40	529.00
California	14,379	100.0	6.7	7.2	8.9	12.4	11.8	10.2	9.6	8.6	24.6	659.00	629.00
Colorado	1,794	100.0	8.2	8.0	10.1	12.6	12.2	10.9	9.7	8.1	20.2	619.30	593.50
Connecticut	1,563	100.0	8.4	8.1	10.7	14.9	11.5	10.7	9.5	7.0	19.3	607.80	567.00
Delaware	517	100.0	9.5	7.7	10.8	13.3	12.0	9.9	10.3	7.0	19.5	600.90	576.00
District of Columbia	241	100.0	7.1	8.7	11.6	16.2	13.7	12.4	8.7	5.8	15.8	578.40	563.00
Florida	11,863	100.0	10.2	9.0	11.3	12.7	12.4	11.3	9.3	7.1	16.9	583.80	552.00
Georgia	7,582	100.0	12.5	9.8	11.4	13.5	13.0	10.5	8.8	6.5	14.2	551.80	521.00
Hawaii	505	100.0	5.9	6.5	9.7	13.5	12.7	9.9	10.7	6.7	24.4	655.70	609.00
Idaho	822	100.0	7.2	7.4	9.0	11.8	10.2	10.9	10.2	8.8	24.5	655.00	637.00
Illinois	7,440	100.0	7.7	7.6	9.0	11.8	12.0	10.4	9.6	8.3	23.5	644.10	618.00
Indiana	4,912	100.0	8.5	7.6	9.6	11.8	11.2	11.0	9.5	8.3	22.4	633.50	612.00
Iowa	1,698	100.0	7.7	8.8	11.3	11.2	13.2	12.3	10.2	8.4	16.8	600.50	587.00
Kansas	1,555	100.0	8.8	8.7	9.8	13.7	12.5	9.3	10.1	8.6	18.5	604.90	568.00
Kentucky	7,084	100.0	7.8	7.7	9.9	12.6	12.3	11.6	9.6	7.7	20.7	624.00	596.00
Louisiana	5,543	100.0	7.3	6.3	9.1	12.0	12.8	11.7	9.2	8.5	23.0	648.20	622.00
Maine	1,194	100.0	9.1	8.4	11.6	14.7	13.3	9.0	9.6	8.1	16.1	580.10	545.30
Maryland	2,420	100.0	7.2	7.6	8.7	11.9	12.9	10.7	10.1	8.6	22.1	639.50	618.00
Massachusetts	3,403	100.0	7.0	8.4	10.5	14.7	12.3	11.0	10.0	6.7	19.4	615.40	575.00
Michigan	8,131	100.0	6.7	6.4	8.1	10.6	10.5	10.6	9.5	8.7	28.9	690.40	673.00
Minnesota	1,807	100.0	8.5	7.7	10.8	12.2	12.9	11.6	9.9	7.4	19.1	614.50	581.00
Mississippi	4,714	100.0	11.5	10.2	11.2	13.5	13.1	11.2	8.8	6.4	14.2	555.70	524.00
Missouri	5,654	100.0	10.6	9.0	10.9	12.8	12.3	10.7	9.4	6.8	17.6	583.90	549.50
Montana	605	100.0	6.3	9.4	10.4	15.7	13.2	7.9	10.6	7.8	18.7	611.80	566.00
Nebraska	854	100.0	11.4	9.0	13.5	12.2	10.5	8.5	9.8	7.8	17.2	571.70	535.80
Nevada	1,211	100.0	8.2	8.1	9.7	11.6	10.2	9.6	10.2	7.8	24.4	647.90	618.00
New Hampshire	760	100.0	11.7	10.1	12.2	11.4	10.3	11.4	7.8	8.4	16.6	577.70	541.00
New Jersey	4,208	100.0	9.8	7.6	9.8	12.5	11.8	9.9	9.2	6.9	22.5	627.00	588.00
New Mexico	1,273	100.0	5.7	7.9	10.1	12.1	12.6	11.1	11.9	7.7	20.7	638.60	612.00
New York	12,188	100.0	8.4	7.5	10.1	12.6	12.1	10.8	10.0	7.9	20.5	622.60	593.50
North Carolina	8,757	100.0	15.5	12.0	12.1	13.2	12.2	9.7	8.3	5.6	11.5	511.80	478.00
North Dakota	298	100.0	11.7	9.4	12.1	11.4	10.7	14.1	8.4	7.4	14.8	562.30	552.30
Ohio	9,344	100.0	6.9	6.7	9.3	11.3	11.3	10.2	10.3	9.1	24.9	660.70	641.00
Oklahoma	3,471	100.0	9.7	7.8	10.6	13.8	12.6	10.3	8.9	7.9	18.4	597.50	561.50
Oregon	2,116	100.0	7.8	7.0	10.0	11.5	10.3	10.4	9.1	8.8	25.0	648.90	625.50
Pennsylvania	10,033	100.0	7.4	7.4	9.1	11.7	11.9	11.1	10.0	8.6	22.8	641.90	620.00
Rhode Island	718	100.0	10.9	9.3	11.8	13.5	11.7	10.4	7.9	8.6	15.7	569.20	528.80

(Continued)

Table 17.
Percentage distribution of disabled widow(er)s, by state or other area and monthly benefit,
December 2005—Continued

State or area	Number	Percentage distribution by dollar amount of monthly benefit										Monthly benefit (dollars)	
		Total	Less than 200.00	200.00–299.90	300.00–399.90	400.00–499.90	500.00–599.90	600.00–699.90	700.00–799.90	800.00–899.90	900.00 or more	Average	Median
South Carolina	5,169	100.0	14.3	10.4	12.0	12.7	12.7	11.4	8.1	6.3	12.1	527.70	505.00
South Dakota	389	100.0	8.5	12.1	12.9	13.6	12.6	13.1	8.5	4.9	13.9	558.60	536.00
Tennessee	7,696	100.0	11.9	10.3	10.7	13.1	12.3	11.4	8.8	7.4	14.1	555.80	530.00
Texas	14,475	100.0	8.5	8.0	9.7	12.6	11.8	11.7	9.6	8.1	19.9	618.00	594.00
Utah	743	100.0	7.0	6.9	9.6	12.2	12.2	10.1	11.0	7.9	23.0	655.10	620.00
Vermont	439	100.0	10.5	11.2	10.0	13.7	12.3	13.2	8.2	6.2	14.8	559.30	535.00
Virginia	5,782	100.0	10.5	8.4	10.1	13.0	11.4	10.4	9.3	7.5	19.4	600.40	571.00
Washington	3,208	100.0	5.9	6.3	10.3	10.6	10.5	12.0	10.3	8.7	25.3	670.50	652.00
West Virginia	3,792	100.0	5.6	6.5	8.1	11.3	11.4	11.5	10.8	8.8	26.0	676.40	659.00
Wisconsin	2,748	100.0	9.3	8.7	8.8	12.3	12.6	12.2	8.9	7.8	19.5	609.10	587.50
Wyoming	235	100.0	6.0	7.2	11.5	16.6	11.1	13.2	8.9	7.2	18.3	610.20	589.00
Outlying areas													
American													
Samoa	53	100.0	15.1	a	13.2	20.8	13.2	a	a	a	a	485.20	453.50
Guam	32	100.0	a	a	18.8	a	a	a	a	a	a	556.00	481.50
Northern Mariana Islands													
Mariana Islands	6	100.0	0	a	a	a	a	0	0	0	0	379.30	375.00
Puerto Rico	5,142	100.0	10.7	12.7	12.1	17.9	15.1	10.8	8.1	5.1	7.6	503.60	478.50
Virgin Islands	64	100.0	a	a	a	15.6	15.6	14.1	17.2	7.8	15.6	645.80	637.50
Foreign countries	767	100.0	8.1	5.6	10.3	14.1	14.9	11.9	10.4	8.1	16.7	605.40	579.00

SOURCE: Social Security Administration, Disabled Beneficiaries and Dependents Master Beneficiary Record file, 100 percent data.

a. Data not shown to avoid disclosure of information for particular individuals.

CONTACT: Kevin Kulzer (410) 965-5366 or di.asr@ssa.gov.

All Disabled Beneficiaries

Table 18.
Percentage distribution of disabled adult children, by state or other area and monthly benefit,
December 2005

State or area	Number	Percentage distribution by dollar amount of monthly benefit										Monthly benefit (dollars)	
		Total	Less than 200.00	200.00–299.90	300.00–399.90	400.00–499.90	500.00–599.90	600.00–699.90	700.00–799.90	800.00–899.90	900.00 or more	Average	Median
All areas	768,538	100.0	5.6	5.6	11.6	12.9	13.2	13.6	13.2	9.1	15.2	616.30	608.00
Alabama	17,442	100.0	6.6	7.2	15.3	15.4	14.2	12.8	10.7	7.5	10.4	562.00	536.00
Alaska	771	100.0	6.4	6.6	13.5	11.5	10.9	13.9	11.2	8.9	17.1	614.00	608.00
Arizona	9,196	100.0	5.4	5.1	9.6	12.4	12.7	13.9	13.9	9.5	17.5	636.90	635.00
Arkansas	9,356	100.0	7.7	6.9	15.3	16.7	15.3	13.1	10.1	6.7	8.2	542.90	518.00
California	64,124	100.0	5.7	5.3	10.0	12.0	12.8	13.4	13.9	9.7	17.2	634.60	630.00
Colorado	5,973	100.0	5.2	4.8	10.5	12.6	13.0	13.6	14.0	9.6	16.7	632.80	629.50
Connecticut	9,497	100.0	3.9	3.9	7.9	9.0	11.5	14.5	17.0	11.2	21.1	685.90	696.00
Delaware	1,928	100.0	3.0	3.5	9.5	11.2	12.7	15.2	15.9	10.1	18.9	666.20	667.00
District of Columbia	1,334	100.0	7.6	7.4	16.6	16.2	15.5	11.4	10.5	6.1	8.6	542.00	511.50
Florida	34,756	100.0	5.8	5.7	10.6	13.1	14.1	14.0	13.3	9.0	14.5	613.50	606.00
Georgia	20,724	100.0	5.6	6.0	15.0	15.9	15.4	12.8	11.0	7.4	10.9	573.50	548.00
Hawaii	2,371	100.0	4.2	4.9	11.1	11.6	13.9	15.7	13.7	10.6	14.4	629.30	623.00
Idaho	2,712	100.0	6.0	5.1	9.6	12.7	15.0	14.9	13.4	8.9	14.3	616.70	609.30
Illinois	32,319	100.0	4.2	4.4	8.9	10.8	11.9	14.0	15.1	10.8	20.0	667.20	671.00
Indiana	17,349	100.0	3.5	3.9	8.3	10.8	12.3	15.3	15.9	10.8	19.2	669.40	677.00
Iowa	8,627	100.0	4.1	4.1	8.7	13.1	13.9	15.2	14.7	10.2	16.1	643.00	639.00
Kansas	6,207	100.0	4.0	4.2	9.9	12.5	14.1	14.0	15.1	10.4	15.8	642.10	639.00
Kentucky	16,543	100.0	7.9	7.8	15.4	15.5	13.3	12.2	10.6	6.7	10.6	552.40	522.00
Louisiana	17,315	100.0	8.2	7.6	14.7	15.0	13.5	11.9	9.9	7.0	12.2	562.40	531.00
Maine	4,603	100.0	7.1	5.3	11.5	15.3	15.3	13.8	13.1	8.3	10.2	580.90	567.50
Maryland	10,935	100.0	3.6	4.3	10.4	11.6	13.9	14.0	14.6	9.4	18.2	652.40	646.00
Massachusetts	18,215	100.0	5.6	5.2	10.2	11.9	12.7	13.3	14.1	10.3	16.7	633.80	633.00
Michigan	33,499	100.0	3.7	3.6	7.4	9.5	11.3	14.0	16.6	11.7	22.2	690.40	701.00
Minnesota	11,638	100.0	4.3	3.9	10.0	12.7	13.2	14.8	14.4	10.2	16.6	643.30	642.00
Mississippi	12,017	100.0	8.4	9.4	18.5	17.1	14.0	10.8	8.6	5.5	7.7	515.20	477.00
Missouri	16,452	100.0	5.8	5.1	11.3	13.5	13.7	14.0	13.1	9.1	14.4	613.20	604.00
Montana	2,198	100.0	3.7	4.3	10.2	13.9	14.8	15.1	13.5	9.6	14.8	629.50	619.00
Nebraska	4,260	100.0	4.6	4.7	11.0	13.4	15.3	15.0	13.4	9.0	13.6	616.80	607.00
Nevada	2,654	100.0	4.0	4.0	8.8	10.6	13.3	13.4	14.5	10.4	21.0	672.30	669.00
New Hampshire	2,913	100.0	4.7	4.1	8.4	12.3	13.7	14.6	14.9	11.5	16.0	645.60	647.50
New Jersey	20,135	100.0	3.6	3.7	8.1	9.6	11.8	14.1	15.5	11.4	22.2	688.80	693.00
New Mexico	4,426	100.0	8.2	8.1	14.8	14.6	13.4	13.0	10.0	7.4	10.5	553.10	530.30
New York	57,153	100.0	4.1	4.2	9.1	11.1	12.2	14.4	15.5	10.7	18.6	660.80	666.00
North Carolina	24,023	100.0	5.4	6.0	15.0	16.1	15.6	13.2	11.4	7.2	10.0	569.90	544.00
North Dakota	1,991	100.0	4.3	5.4	11.6	16.3	15.4	15.9	11.7	7.4	12.0	597.20	578.00
Ohio	35,313	100.0	4.4	4.4	9.4	11.0	12.5	14.4	14.9	10.5	18.5	653.80	659.00
Oklahoma	9,430	100.0	5.4	5.9	12.9	14.6	14.3	13.9	12.3	8.2	12.5	593.10	574.00
Oregon	7,422	100.0	4.3	4.2	8.4	10.8	12.7	15.1	14.8	11.3	18.3	658.70	664.00
Pennsylvania	39,584	100.0	4.6	4.2	8.9	11.3	13.0	15.4	15.1	10.2	17.3	649.30	654.00
Rhode Island	3,174	100.0	5.2	6.0	10.9	12.1	13.3	14.7	13.3	10.1	14.4	620.20	619.00

(Continued)

Table 18.
Percentage distribution of disabled adult children, by state or other area and monthly benefit,
December 2005—Continued

State or area	Number	Percentage distribution by dollar amount of monthly benefit										Monthly benefit (dollars)	
		Total	Less than 200.00	200.00–299.90	300.00–399.90	400.00–499.90	500.00–599.90	600.00–699.90	700.00–799.90	800.00–899.90	900.00 or more	Average	Median
South Carolina	13,500	100.0	5.0	6.0	14.8	16.0	15.9	13.4	11.1	7.7	10.0	573.40	547.00
South Dakota	2,101	100.0	6.0	5.1	13.6	17.6	14.6	12.7	12.5	7.9	9.9	575.40	553.00
Tennessee	18,918	100.0	5.8	5.8	15.3	15.7	15.0	13.3	10.9	7.5	10.6	571.70	548.00
Texas	42,831	100.0	6.8	6.6	13.2	14.5	13.8	12.6	11.2	7.8	13.4	586.60	562.00
Utah	3,498	100.0	5.0	4.8	8.4	11.6	12.9	14.9	15.1	10.0	17.4	649.70	653.50
Vermont	1,921	100.0	4.7	4.7	11.1	15.0	15.2	14.0	14.6	8.8	11.8	604.80	593.00
Virginia	17,582	100.0	5.3	5.8	13.3	14.7	14.3	14.2	12.1	8.0	12.3	592.60	574.00
Washington	12,201	100.0	4.2	4.1	8.6	10.9	12.2	13.8	15.4	11.2	19.5	666.50	674.00
West Virginia	10,034	100.0	6.4	6.3	13.8	14.6	13.6	14.3	12.2	7.6	11.2	576.70	562.00
Wisconsin	16,079	100.0	3.9	3.7	8.5	11.3	12.8	15.1	16.2	10.5	17.9	658.70	668.00
Wyoming	899	100.0	3.8	4.3	8.8	14.0	15.0	14.5	12.7	7.7	19.2	650.90	631.50
Outlying areas													
American													
Samoa	94	100.0	11.7	16.0	a	25.5	17.0	8.5	a	a	a	438.80	425.30
Guam	133	100.0	15.8	17.3	23.3	15.0	a	a	a	a	a	430.10	373.50
Northern													
Mariana													
Islands	44	100.0	27.3	29.5	a	18.2	a	a	a	a	a	334.00	280.50
Puerto Rico	22,736	100.0	15.7	15.6	27.7	17.4	10.3	5.8	3.6	1.9	2.0	393.30	361.00
Virgin Islands	313	100.0	6.7	10.2	12.8	20.1	16.9	16.0	8.9	a	a	513.50	501.00
Foreign countries	5,075	100.0	16.8	11.8	18.3	15.1	11.6	10.2	7.7	3.8	4.8	448.90	418.00

SOURCE: Social Security Administration, Disabled Beneficiaries and Dependents Master Beneficiary Record file, 100 percent data.

a. Data not shown to avoid disclosure of information for particular individuals.

CONTACT: Kevin Kulzer (410) 965-5366 or di.asr@ssa.gov.