

Current Medicare Survey: Hospital Insurance Sample

by SARA JANE PETERSON*

THE STATISTICAL system of the Social Security Administration records the use of and the charges for covered hospital and medical services under health insurance for the aged (Medicare). The system's operation depends on the receipt of hospital and medical bills sent to and paid by intermediaries and carriers throughout the country. Substantial delays in the statistical reporting of current information are inherent in this system. To obtain current estimates of hospital and medical care services used and charges incurred by covered persons, the Social Security Administration therefore conducts a continuing monthly Current Medicare Survey (CMS).

The CMS is composed of a hospital insurance sample and a medical insurance sample, both designed to provide current national program data on the volume of services and charges incurred for specified periods. Data based on the medical insurance sample have been presented in the *Health Insurance Statistics* series, published by the Office of Research and Statistics to show current data on Medicare.¹ This article describes the hospital insurance sample and presents monthly data on admissions, discharges, covered days, and charges for the period July 1, 1966, through December 31, 1967.

Highlights from the survey data for the first 18 months of the hospital insurance program reveal that

- covered days of care per discharge remained constant at about 14 days
- 5.3 million hospital admissions occurred in 1967, or 276 admissions per 1,000 enrollees
- covered days of hospital care totaled 74 million in 1967, or about 3,857 days per 1,000 enrollees
- a trend to small increases in utilization was apparent in terms of admission rates
- for short-stay hospitals, the total charges went

* Division of Health Insurance Studies, Office of Research and Statistics.

¹ See *Health Insurance Statistics*, CMS Nos. 1-9. This article, in substantially the same form, appears as No. 10 in the CMS series.

from \$42 a day to \$53

—the annual rates of discharges and covered days of care per 1,000 enrollees are considerably higher for those aged 75 and over than for those aged 65-74

—there was a pattern of shorter stays with higher total charges per day for men than for women.

HOSPITAL INSURANCE SAMPLE DESIGN

The CMS hospital insurance sample is linked with the Medicare statistical system for the collection and maintenance of data on the utilization and financing of hospital services.² The hospital insurance sample consists of a sample of hospital admissions recorded in the health insurance auxiliary file. The medical insurance sample, in contrast, is composed of a sample of persons enrolled in the supplementary medical insurance program who are interviewed monthly in their homes.³

The hospital insurance sample used to provide estimates shown in this article consists of two main components: (1) a basic sample from the current month's record of inpatient hospital admission notices received by the Social Security Administration—a 1-in-200 systematic sample of new notices recorded in the health insurance auxiliary file; (2) a supplementary sample of longer-term inpatient stays to reduce the sampling variation of overall estimates of covered days per discharge and charges—a 1-in-200 systematic sample of all admission notices with 31 days or more elapsed from the date of admission to the date of selection or recorded discharge. Provision is made to ensure that a single admission notice has one and only one chance of selection for the basic sample and exactly one chance for the supplementary sample. This sample procedure has the characteristic of giving all

² For a description of the Medicare statistical system, see Howard West, "Health Insurance for the Aged: The Statistical Program," *Social Security Bulletin*, January 1967.

³ See Jack Sharff, "Current Medicare Survey: The Medical Insurance Sample," *Social Security Bulletin*, April 1967, pages 4-9.

reported admissions an independent chance of selection without clustering by hospital. Thus, all hospitals in the United States and its Territories and, in emergency cases only, in Canada may be represented in the sample.

Currently, approximately 2,000 basic sample and 1,800 potential long-term sample selections are made each month. Some selections for the basic sample are, of course, admissions that become long-term stays of 31 days or more. These cases are identified and properly weighted, as described below. Some selections for the supplementary sample actually are for short-term stays, but such cases are dropped if the discharge data received indicate a length of stay less than 31 days. An additional sampling step is involved to account for the difference between admission notices and actual admissions when more than one notice is received for an admission.

The net effect of this sample design is a 0.5-percent sample of short-term hospital admissions (stays of 30 days or less) and a 1.0-percent sample of all long-term stays (31 or more days of care).

The records used in tabulating from July 1966 to December 1966 include all admissions selected through May 23, 1967; from January 1967 to June 1967 they include selections through December 29, 1967; and from July 1967 to December 1967 they include selections through June 28, 1968. On the average, this method yields about 2,800 short-term cases and about 650 long-term cases for tabulation purposes each month.

The monthly data reported here are the results of a weighting procedure in which a separate weight is calculated and assigned to each sample component each month, with adjustment of the weight for nonresponse in each component by a simple ratio approach.⁴ There are at least two ways of obtaining estimates of annual, semi-annual, and quarterly data from the CMS hospital insurance sample. In one method, data for a specified period may be derived by totaling the monthly estimates included in the specified period. In another, it is possible to obtain CMS estimates by first combining the data on a case-by-case basis and then weighting the combined file for the period.

⁴ Studies of the nonresponse cases have shown no concentration in any of the characteristics used in classifying the data.

In the second method, data for sample cases in the second component of the sample are used in a way that reduces somewhat the sampling variability contribution. The result is a somewhat smaller sampling variability for overall estimates for the period, especially in regard to estimates of charges and covered days of care. Weight adjustments for nonresponse in each component is made for the period as a whole by a simple ratio approach.

The first of these methods has been used here in providing annual, semiannual, and quarterly estimates. The second method will be used in subsequent CMS reports when data for 1968 and later periods are provided. To obtain estimates that are more nearly comparable, revised data for 1966 and 1967, based on the second method of estimation, will be shown in subsequent reports.

As changes have occurred in the procedures for processing health insurance actions to the health insurance entitlement file, it has been necessary to change the sample selection program to ensure an unbiased sampling of all inpatient hospital admission notices received. A procedural change made in the fall of 1967 provides an illustrative example of how factors may affect the validity of estimates: A change made at that time in processing the health insurance auxiliary file was not introduced in the modification of the sampling program until two selection periods had passed. The result was a nonprobability underselection in the basic sample of about 20 percent in December 1967 and 30 percent in January 1968, as determined by relating the number of basic sample selections to the number of admission notices processed. As the universe from which the sample was drawn could not be recreated, enough of those admissions actually selected were chosen by a random process and replicated to represent the cases that should have been sampled but were not. Because the characteristics of the lost cases are unknown, it is not possible to determine whether the procedure used to replace them is unbiased. If a bias exists, it will not be measured in the variance estimates shown in the table of standard errors. Any bias that might have been introduced through dealing with underselection in this way would affect the data for March–June 1968 negligibly but would have a greater effect on the data for November 1967–February 1968.

SOURCE OF DATA

Data tabulated for the hospital insurance sample are obtained from several sources. Admission data, such as date of admission and provider number, are part of the admission notices sampled. Demographic data, such as age, sex, race, and type of entitlement of the beneficiary, are extracted from the health insurance entitlement file. Information for the providers—such as type of hospital, servicing district office, State, and Census division—is obtained from the provider record.

Data relating to discharges are obtained from the processed file of bills or directly from the hospital. When the patient is discharged, the bill received and recorded in the Social Security Administration central records is used to obtain such information as date of discharge, status at discharge, total charges, noncovered charges, and deductible and coinsurance amounts. If the bill has not been received after a reasonable period of time, a field followup is initiated through the Social Security Administration district offices to secure the needed information from the hospital. If both bill and field data are available, preference for tabulation is given to data from the bill. Information for about 10 percent of all discharges tabulated for this report are based on data obtained from the hospital through the district offices. This dual approach of employing records and field followup yields usable monthly data on 97–99 percent of all sample admissions. The 1–3 percent nonresponse is handled by a simple adjustment of the weights applied in the tabulations.

FINDINGS

The CMS-HI sample for the first 18 months of Medicare has provided the data in the tables shown here. Included are final estimates of monthly data and preliminary estimates for annual, semiannual, and quarterly periods. Annual rates per 1,000 enrolled population are projected rates based on the monthly or periodic estimates adjusted for the number of days in the month. The population base used for monthly data is an estimate of the total enrollment in the health insurance program for the month and for

periodic data is the average of the enrollment estimates for the months included.

Covered Days of Care

The CMS-HI sample reports data only for covered days of care. Inpatient days before July 1, 1966, for all stays begun in June 1966 or earlier but extending into July are excluded. For patients who become eligible for benefits by attaining age 65 during an inpatient stay, days in months before the month of entitlement are also excluded, as well as days after the patient exhausts benefits in a benefit period. Covered days of care per discharge are thus limited to a maximum of 90 days during this period. Approximately 180,000 admissions before the beginning of Medicare were redefined for the survey as admissions on July 1, 1966. The estimate of admissions in July was raised to 647,000 and the result was a low figure (8.2 days) for covered days of care per discharge in July. The effect is also seen in the estimate of 12.8 covered days per discharge for August 1966.

The covered days of care per discharge figure is comparable to mean length of stay estimates from other surveys of the hospital experience of this age group. It may be expected, however, that the estimate based on the CMS-HI sample will be somewhat lower than the mean length of stay estimated from a sample design such as the hospital discharge survey of short stay hospitals, which continues to count days until an actual discharge or death in the hospital.⁵ For July–December 1966, this survey shows a mean length of stay of 13.8 days—a higher figure than the CMS short-stay estimate for any one of the 6 months except September. However, the September 1966 estimates of 15.9 days for all hospital and 14.0 days for short-stay hospitals reflect a single-time phenomenon under Medicare—the 90th day of care for persons hospitalized continuously from July 1 was September 28. An extraordinarily large number of patients exhausted benefits on the latter date and were defined as discharged on September 29 so that

⁵ Unpublished data from the Hospital Discharge Survey, conducted by the National Center for Health Statistics, Public Health Service.

the day on which benefits were exhausted would be counted as a covered day.

The number of covered days of care per discharge for all hospitals has remained fairly constant around 14 days (chart 1). Except for the first 3 months under the program, the monthly estimate ranges from 13.6 covered days per discharge to 14.3 days. Even the extreme values are not significantly different from each other. There has, therefore, been no change in average number of covered days of care per discharge that can be seen from the sample.

In addition to data on covered days of care for discharges occurring in a month, table 3 shows covered days incurred—that is, actually used in the month or period. The two estimates are very different for July 1966: 6,222,000 covered days incurred, compared with 3,732,000 covered days for discharges. This difference can be attributed to the dropping of days before July 1 from tabu-

lation; for months after September 1966, the two estimates are similar.

Admissions

The estimated monthly total number of admissions ranged from a low of 394,000 in February 1967 to a high of 473,000 in January 1967, excluding July 1966. In terms of annual admission rate per 1,000 enrolled, January again was highest (excluding July) with a projected rate of 292 admissions per 1,000 enrolled population. August 1966 projected the lowest rate of 248 per 1,000. Fiscal and calendar years 1967 had rates of 281 and 276 per 1,000, respectively.

Although there exist statistically significant differences between the admission rates in table 1 for many pairs of months, the sample shows

CHART 1.—Covered days of care per discharge for all hospitals and for short-stay hospitals, July 1966–December 1967

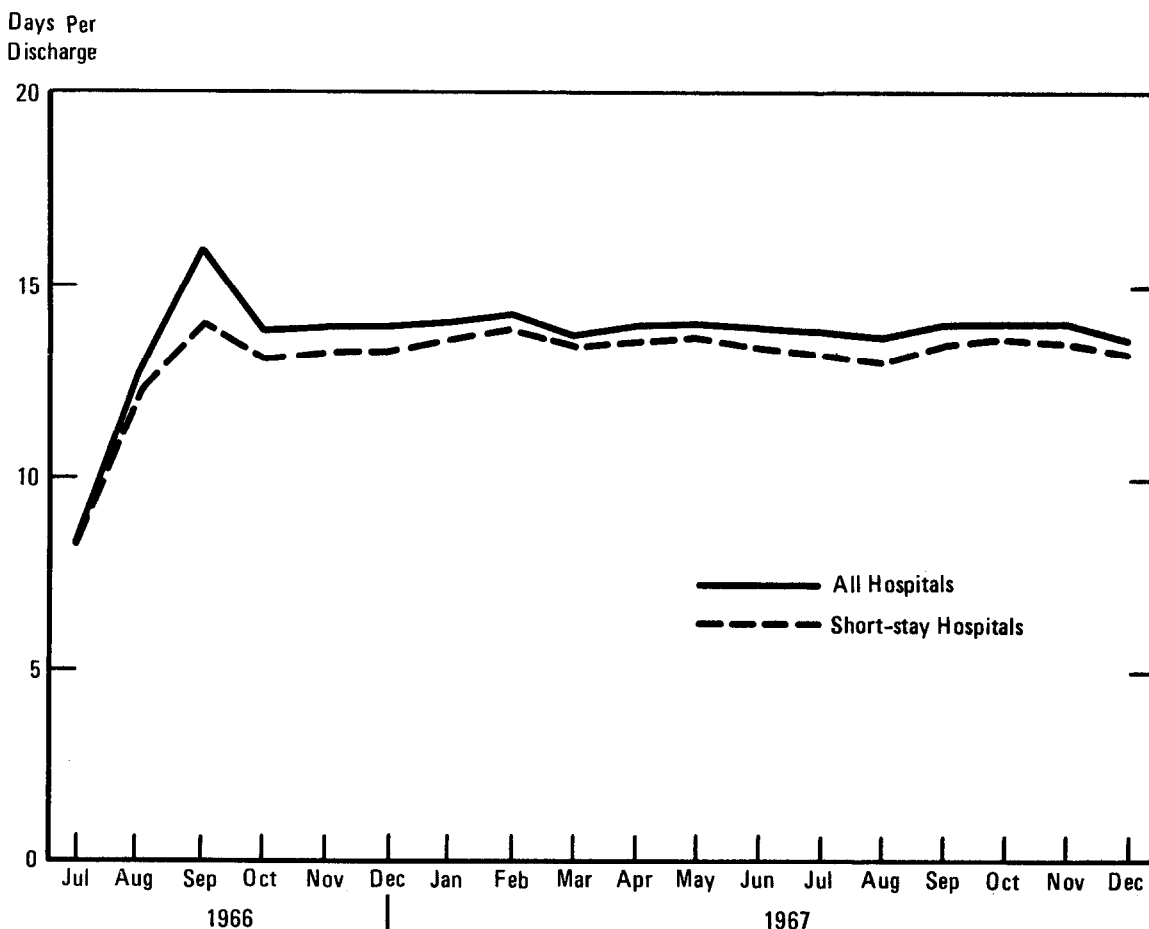


TABLE 1.—Current Medicare Survey, Hospital Insurance Sample: Estimated admissions, discharges, covered days of care per discharge, and rate per 1,000 enrollees, by period, July 1966–December 1967

| Month or period ¹ | Admissions | | Discharges ³ | | Covered days of care | | |
|------------------------------|-----------------------|--|-------------------------|--|-----------------------|--|---------------|
| | Number (in thousands) | Annual rate per 1,000 enrollees ² | Number (in thousands) | Annual rate per 1,000 enrollees ² | Number (in thousands) | Annual rate per 1,000 enrollees ² | Per discharge |
| All hospitals | | | | | | | |
| July 1966–June 1967..... | 4 5,368 | 281 | 5,170 | 271 | 70,224 | 3,680 | 13.6 |
| January–December 1967..... | 5,320 | 276 | 5,299 | 275 | 74,331 | 3,857 | 14.0 |
| July–December 1966..... | 4 2,695 | 281 | 2,503 | 261 | 32,625 | 3,405 | 13.0 |
| January–June 1967..... | 2,673 | 281 | 2,667 | 281 | 37,599 | 3,957 | 14.1 |
| July–December 1967..... | 2,647 | 271 | 2,632 | 269 | 36,732 | 3,759 | 14.0 |
| July–September 1966..... | 4 1,450 | 303 | 1,248 | 261 | 15,186 | 3,176 | 12.2 |
| October–December 1966..... | 1,246 | 259 | 1,255 | 261 | 17,439 | 3,633 | 13.9 |
| January–March 1967..... | 1,326 | 281 | 1,308 | 277 | 18,506 | 3,925 | 14.1 |
| April–June 1967..... | 1,347 | 281 | 1,359 | 284 | 19,093 | 3,989 | 14.0 |
| July–September 1967..... | 1,312 | 270 | 1,312 | 270 | 18,267 | 3,756 | 13.9 |
| October–December 1967..... | 1,336 | 272 | 1,320 | 269 | 18,465 | 3,761 | 14.0 |
| 1966: | | | | | | | |
| July..... | 4 647 | 402 | 453 | 282 | 3,732 | 2,319 | 8.2 |
| August..... | 400 | 248 | 388 | 241 | 4,976 | 3,089 | 12.8 |
| September..... | 403 | 258 | 406 | 260 | 6,478 | 4,149 | 15.9 |
| October..... | 433 | 268 | 421 | 260 | 5,791 | 3,584 | 13.7 |
| November..... | 409 | 261 | 418 | 267 | 5,828 | 3,723 | 13.9 |
| December..... | 404 | 250 | 417 | 257 | 5,821 | 3,595 | 13.9 |
| 1967: | | | | | | | |
| January..... | 473 | 292 | 446 | 275 | 6,331 | 3,905 | 14.1 |
| February..... | 394 | 268 | 405 | 276 | 5,826 | 3,972 | 14.3 |
| March..... | 460 | 283 | 457 | 281 | 6,349 | 3,902 | 13.8 |
| April..... | 459 | 291 | 449 | 285 | 6,316 | 4,004 | 14.0 |
| May..... | 454 | 279 | 467 | 287 | 6,619 | 4,059 | 14.1 |
| June..... | 433 | 274 | 443 | 281 | 6,159 | 3,902 | 13.9 |
| July..... | 443 | 271 | 436 | 267 | 6,037 | 3,700 | 13.8 |
| August..... | 443 | 270 | 445 | 271 | 6,119 | 3,734 | 13.7 |
| September..... | 426 | 268 | 431 | 271 | 6,111 | 3,836 | 14.1 |
| October..... | 444 | 269 | 431 | 260 | 6,083 | 3,679 | 14.1 |
| November..... | 430 | 274 | 435 | 272 | 6,165 | 3,851 | 14.1 |
| December..... | 453 | 273 | 454 | 274 | 6,217 | 3,757 | 13.6 |
| Short-stay hospitals | | | | | | | |
| July 1966–June 1967..... | 4 5,264 | 276 | 5,076 | 266 | 66,248 | 3,471 | 13.1 |
| January–December 1967..... | 5,245 | 272 | 5,220 | 271 | 70,895 | 3,678 | 13.6 |
| July–December 1966..... | 4 2,632 | 275 | 2,449 | 256 | 30,336 | 3,166 | 12.4 |
| January–June 1967..... | 2,632 | 277 | 2,627 | 277 | 35,911 | 3,780 | 13.7 |
| July–December 1967..... | 2,613 | 267 | 2,593 | 265 | 34,983 | 3,580 | 13.5 |
| July–September 1966..... | 4 1,403 | 293 | 1,214 | 254 | 13,936 | 2,915 | 11.5 |
| October–December 1966..... | 1,229 | 256 | 1,235 | 257 | 16,400 | 3,416 | 13.3 |
| January–March 1967..... | 1,307 | 277 | 1,288 | 273 | 17,645 | 3,742 | 13.7 |
| April–June 1967..... | 1,325 | 277 | 1,239 | 280 | 18,266 | 3,817 | 13.6 |
| July–September 1967..... | 1,293 | 266 | 1,290 | 265 | 17,278 | 3,553 | 13.4 |
| October–December 1967..... | 1,320 | 269 | 1,303 | 265 | 17,705 | 3,606 | 13.6 |
| 1966: | | | | | | | |
| July..... | 4 616 | 383 | 439 | 273 | 3,640 | 2,262 | 8.2 |
| August..... | 391 | 243 | 382 | 237 | 4,791 | 2,974 | 12.5 |
| September..... | 396 | 254 | 393 | 252 | 5,504 | 3,525 | 14.0 |
| October..... | 427 | 264 | 414 | 256 | 5,437 | 3,365 | 13.1 |
| November..... | 404 | 258 | 412 | 263 | 5,486 | 3,504 | 13.3 |
| December..... | 398 | 246 | 409 | 253 | 5,478 | 3,383 | 13.3 |
| 1967: | | | | | | | |
| January..... | 464 | 286 | 437 | 270 | 5,956 | 3,674 | 13.6 |
| February..... | 387 | 264 | 399 | 272 | 5,587 | 3,809 | 13.9 |
| March..... | 455 | 280 | 451 | 277 | 6,102 | 3,750 | 13.5 |
| April..... | 453 | 287 | 442 | 280 | 6,015 | 3,813 | 13.6 |
| May..... | 447 | 274 | 461 | 283 | 6,359 | 3,900 | 13.7 |
| June..... | 425 | 270 | 437 | 277 | 5,893 | 3,733 | 13.4 |
| July..... | 437 | 268 | 429 | 263 | 5,743 | 3,520 | 13.3 |
| August..... | 436 | 266 | 437 | 267 | 5,765 | 3,518 | 13.1 |
| September..... | 420 | 264 | 424 | 266 | 5,771 | 3,623 | 13.6 |
| October..... | 439 | 265 | 424 | 256 | 5,824 | 3,523 | 13.7 |
| November..... | 434 | 271 | 429 | 268 | 5,871 | 3,668 | 13.6 |
| December..... | 447 | 270 | 450 | 272 | 6,009 | 3,631 | 13.3 |

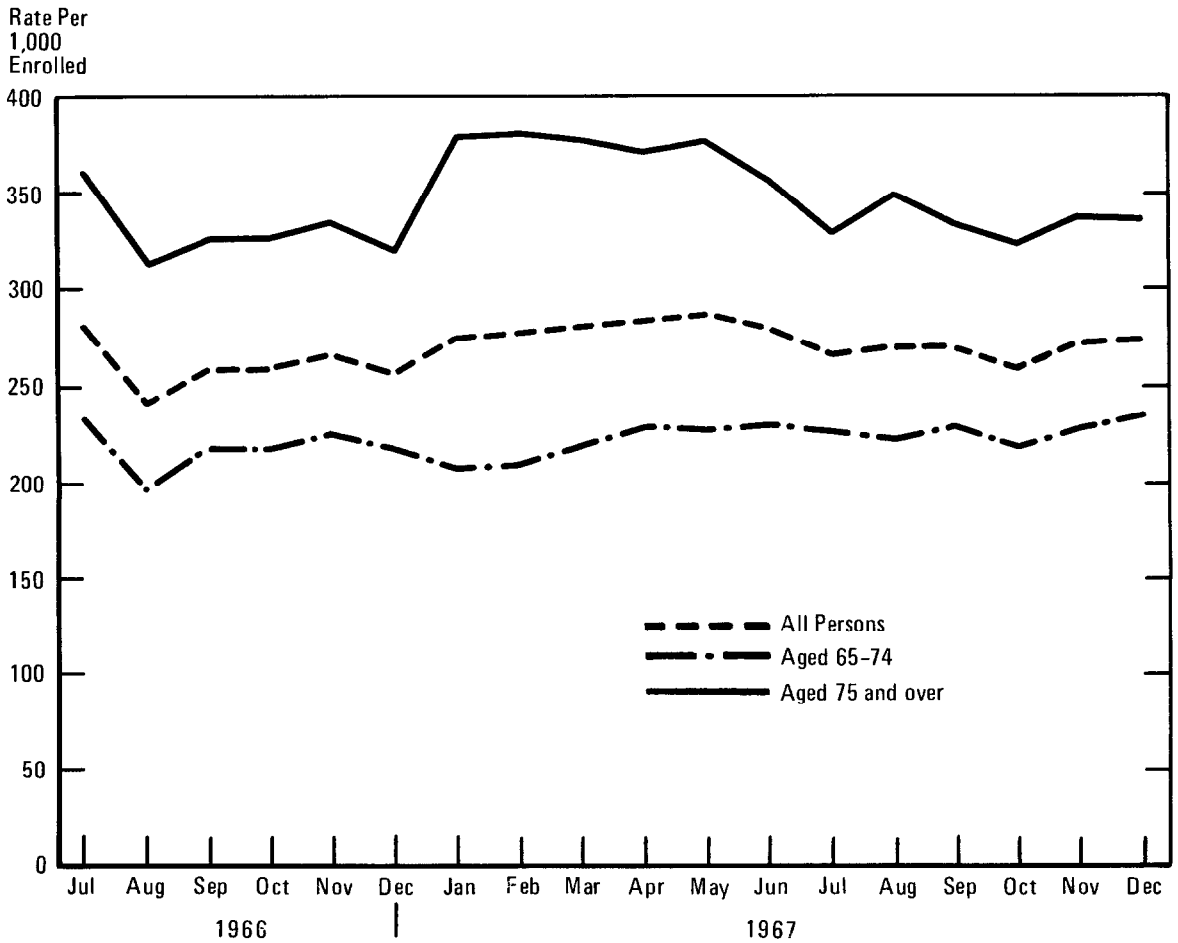
¹ Annual, semiannual, and quarterly data subject to revision as explained in the text.

² Based on average enrollment for the specified period.

³ Includes termination of covered inpatient care without discharge.

⁴ Includes approximately 180,000 admissions before July 1, 1966.

CHART 2.—Annual rate of discharges per 1,000 enrolled population, for all hospitals, by age and by month, July 1966–December 1967



no consistent trend toward an increasing admission rate in the first 18 months' experience taken as a whole. As shown below, however, admission

| Month | Annual admission rate | |
|----------------|-----------------------|------|
| | 1966 | 1967 |
| August..... | 248 | 270 |
| September..... | 258 | 268 |
| October..... | 268 | 269 |
| November..... | 261 | 274 |
| December..... | 250 | 273 |

rates for the 5 months of the period August–December 1967 are all higher than those for the same month in 1966.⁶ The consistency of the

⁶ There is no evidence of an influenza outbreak during the 18 months described in this report. See *Morbidity and Mortality Weekly Report*, volume 16, No. 63, National Communicable Disease Center, November 1968.

pattern of increase from 1966 to 1967 for each of these five pairs of months is not likely to occur by chance alone.⁷ A trend to small increases in utilization in terms of admission rate is thus indicated. A similar analysis of annual rates of discharges and covered days of care points in the same direction but not so forcefully, since the discharge rate of 260 per 1,000 enrolled is the same for October 1966 and October 1967. The number of covered days of care in all hospitals shows a higher annual rate for September 1966 than September 1967, but, for short-stay hospitals only, the rates for all 5 months of 1967 are higher than the rates for the corresponding months of 1966—an indication that the all-hospital estimate was inflated by the unusual number

⁷ The probability of this having occurred by chance is less than .05 using the sign test.

TABLE 2.—Current Medicare Survey, Hospital Insurance Sample: Total and covered charges, and reimbursable charges for discharges,¹ by period of discharge, July 1966–December 1967

| Month or period ² of discharge | Total charges | | | Covered charges | | Reimbursable charges | |
|---|----------------------|---------------|---------|----------------------|------------------|----------------------|------------------|
| | Amount (in millions) | Per discharge | Per day | Amount (in millions) | Percent of total | Amount (in millions) | Percent of total |
| All hospitals | | | | | | | |
| July 1966–June 1967 | \$3,171.8 | \$614 | \$45 | \$3,104.9 | 97.9 | \$2,555.1 | 80.6 |
| January–December 1967 | 3,638.4 | 687 | 49 | 3,564.6 | 98.0 | 2,935.8 | 80.7 |
| July–December 1966 | 1,394.5 | 557 | 43 | 1,364.5 | 97.8 | 1,117.5 | 80.1 |
| January–June 1967 | 1,777.3 | 666 | 47 | 1,740.5 | 97.9 | 1,437.6 | 80.9 |
| July–December 1967 | 1,861.1 | 707 | 51 | 1,824.2 | 98.0 | 1,498.2 | 80.5 |
| July–September 1966 | 624.6 | 500 | 41 | 610.8 | 97.8 | 498.9 | 79.9 |
| October–December 1966 | 769.9 | 613 | 44 | 753.7 | 97.9 | 618.6 | 79.1 |
| January–March 1967 | 856.5 | 655 | 46 | 838.3 | 97.9 | 693.6 | 81.0 |
| April–June 1967 | 920.8 | 678 | 48 | 902.2 | 98.0 | 744.0 | 80.8 |
| July–September 1967 | 911.0 | 694 | 50 | 893.6 | 98.1 | 733.6 | 80.5 |
| October–December 1967 | 950.1 | 720 | 51 | 930.6 | 98.0 | 764.5 | 80.5 |
| 1966: | | | | | | | |
| July | 155.7 | 343 | 41 | 151.9 | 97.5 | 121.2 | 77.8 |
| August | 213.9 | 551 | 42 | 209.1 | 97.7 | 171.7 | 80.2 |
| September | 255.0 | 628 | 39 | 249.8 | 97.9 | 206.0 | 80.7 |
| October | 248.7 | 591 | 42 | 243.8 | 98.0 | 201.3 | 80.9 |
| November | 261.7 | 626 | 44 | 255.8 | 97.7 | 207.7 | 79.3 |
| December | 259.5 | 623 | 44 | 254.1 | 97.9 | 209.7 | 80.8 |
| 1967: | | | | | | | |
| January | 288.7 | 636 | 44 | 277.8 | 97.9 | 229.5 | 80.8 |
| February | 273.7 | 676 | 46 | 267.9 | 97.8 | 222.5 | 81.2 |
| March | 299.0 | 654 | 47 | 292.6 | 97.8 | 241.7 | 80.8 |
| April | 305.4 | 680 | 48 | 299.5 | 98.0 | 244.7 | 80.1 |
| May | 319.8 | 684 | 48 | 312.8 | 97.8 | 258.6 | 80.8 |
| June | 295.6 | 667 | 47 | 289.8 | 98.0 | 240.7 | 81.4 |
| July | 298.4 | 684 | 49 | 293.5 | 98.3 | 242.7 | 81.3 |
| August | 308.7 | 690 | 50 | 300.0 | 97.8 | 246.4 | 80.3 |
| September | 306.0 | 710 | 50 | 300.1 | 98.0 | 244.6 | 79.9 |
| October | 307.5 | 714 | 50 | 301.1 | 97.9 | 248.5 | 80.8 |
| November | 316.1 | 727 | 51 | 309.1 | 97.7 | 254.6 | 80.5 |
| December | 326.4 | 719 | 52 | 320.4 | 98.1 | 261.5 | 80.0 |
| Short-stay hospitals | | | | | | | |
| July 1966–June 1967 | \$3,099.2 | \$611 | \$47 | \$3,033.4 | 97.9 | \$2,496.2 | 80.5 |
| January–December 1967 | 3,569.6 | 684 | 50 | 3,497.0 | 98.0 | 2,880.0 | 80.7 |
| July–December 1966 | 1,352.7 | 552 | 45 | 1,323.2 | 97.8 | 1,083.9 | 80.1 |
| January–June 1967 | 1,746.5 | 665 | 49 | 1,710.1 | 97.9 | 1,412.3 | 80.9 |
| July–December 1967 | 1,823.1 | 703 | 52 | 1,786.9 | 98.0 | 1,467.7 | 80.5 |
| July–September 1966 | 600.6 | 495 | 43 | 587.2 | 97.8 | 479.5 | 79.8 |
| October–December 1966 | 752.1 | 609 | 46 | 736.0 | 97.9 | 604.4 | 80.4 |
| January–March 1967 | 840.5 | 653 | 48 | 822.7 | 97.9 | 680.8 | 81.0 |
| April–June 1967 | 906.0 | 676 | 50 | 887.4 | 98.0 | 731.5 | 80.7 |
| July–September 1967 | 888.5 | 689 | 51 | 871.4 | 98.1 | 715.4 | 80.5 |
| October–December 1967 | 934.6 | 717 | 53 | 915.5 | 98.0 | 752.3 | 80.5 |
| 1966: | | | | | | | |
| July | 154.1 | 351 | 42 | 150.4 | 97.5 | 119.8 | 77.7 |
| August | 210.4 | 551 | 43 | 206.0 | 97.8 | 169.0 | 80.2 |
| September | 236.0 | 601 | 42 | 230.9 | 97.8 | 190.8 | 80.8 |
| October | 242.9 | 587 | 44 | 238.1 | 98.0 | 196.4 | 80.8 |
| November | 255.5 | 620 | 46 | 249.6 | 97.6 | 202.8 | 79.3 |
| December | 253.8 | 620 | 46 | 248.4 | 97.8 | 205.2 | 80.8 |
| 1967: | | | | | | | |
| January | 277.0 | 634 | 46 | 271.1 | 97.8 | 223.9 | 80.8 |
| February | 268.4 | 672 | 48 | 262.8 | 97.9 | 218.3 | 81.3 |
| March | 295.1 | 654 | 48 | 288.8 | 97.8 | 238.6 | 80.8 |
| April | 299.9 | 679 | 49 | 294.0 | 98.0 | 240.2 | 80.0 |
| May | 315.5 | 684 | 49 | 308.6 | 97.8 | 254.8 | 80.7 |
| June | 290.6 | 666 | 49 | 284.8 | 98.0 | 236.5 | 81.3 |
| July | 291.1 | 679 | 50 | 286.5 | 98.4 | 236.8 | 81.3 |
| August | 298.0 | 682 | 51 | 291.3 | 97.7 | 239.2 | 80.2 |
| September | 299.5 | 706 | 51 | 293.6 | 98.0 | 239.4 | 79.9 |
| October | 302.4 | 714 | 51 | 296.0 | 97.8 | 244.5 | 80.8 |
| November | 310.2 | 723 | 52 | 303.3 | 97.7 | 249.7 | 80.4 |
| December | 322.0 | 716 | 53 | 316.2 | 98.1 | 258.2 | 80.1 |

¹ Includes termination of covered inpatient care without discharge.

² Annual, semiannual, and quarterly data subject to revision as explained in the text.

TABLE 3.—Current Medicare Survey, Hospital Insurance Sample: Covered days of care, covered days for discharges,¹ and rate per 1,000 enrollees, by period, July 1966–December 1967.

| Month or period ² | All hospitals | | | | Short-stay hospitals | | | |
|------------------------------|------------------------------------|--|--|--|------------------------------------|--|--|--|
| | Covered days incurred ³ | | Covered days for discharges ³ | | Covered days incurred ³ | | Covered days for discharges ³ | |
| | Number (in thousands) | Annual rate per 1,000 enrollees ⁴ | Number (in thousands) | Annual rate per 1,000 enrollees ⁴ | Number (in thousands) | Annual rate per 1,000 enrollees ⁴ | Number (in thousands) | Annual rate per 1,000 enrollees ⁴ |
| July 1966–June 1967..... | 73,478 | 3,850 | 70,224 | 3,680 | 69,094 | 3,621 | 66,248 | 3,471 |
| January–December 1967..... | 74,129 | 3,846 | 74,331 | 3,857 | 70,786 | 3,673 | 70,895 | 3,678 |
| July–December 1966..... | 35,695 | 3,725 | 32,625 | 3,405 | 32,992 | 3,443 | 30,336 | 3,166 |
| January–June 1967..... | 37,783 | 3,977 | 37,599 | 3,957 | 36,101 | 3,800 | 35,911 | 3,780 |
| July–December 1967..... | 36,346 | 3,719 | 36,732 | 3,759 | 34,684 | 3,549 | 34,983 | 3,580 |
| July–September 1966..... | 18,039 | 3,773 | 15,186 | 3,176 | 16,314 | 3,412 | 13,936 | 2,915 |
| October–December 1966..... | 17,656 | 3,678 | 17,439 | 3,633 | 16,679 | 3,474 | 16,400 | 3,416 |
| January–March 1967..... | 18,763 | 3,979 | 18,506 | 3,925 | 17,938 | 3,805 | 17,645 | 3,742 |
| April–June 1967..... | 19,020 | 3,974 | 19,093 | 3,989 | 18,163 | 3,795 | 18,266 | 3,817 |
| July–September 1967..... | 18,091 | 3,720 | 18,267 | 3,756 | 17,175 | 3,531 | 17,278 | 3,553 |
| October–December 1967..... | 18,255 | 3,719 | 18,465 | 3,761 | 17,509 | 3,566 | 17,705 | 3,606 |
| 1966: | | | | | | | | |
| July..... | 6,222 | 3,867 | 3,732 | 2,319 | 5,668 | 3,523 | 3,640 | 2,262 |
| August..... | 5,931 | 3,681 | 4,976 | 3,089 | 5,333 | 3,310 | 4,791 | 2,974 |
| September..... | 5,886 | 3,770 | 6,478 | 4,149 | 5,312 | 3,402 | 5,504 | 3,525 |
| October..... | 5,739 | 3,544 | 5,791 | 3,584 | 5,409 | 3,340 | 5,437 | 3,365 |
| November..... | 5,812 | 3,717 | 5,828 | 3,723 | 5,518 | 3,529 | 5,486 | 3,504 |
| December..... | 6,105 | 3,774 | 5,821 | 3,595 | 5,752 | 3,556 | 5,478 | 3,383 |
| 1967: | | | | | | | | |
| January..... | 6,466 | 3,989 | 6,331 | 3,905 | 6,172 | 3,807 | 5,956 | 3,674 |
| February..... | 5,948 | 4,055 | 5,826 | 3,972 | 5,689 | 3,878 | 5,587 | 3,879 |
| March..... | 6,348 | 3,902 | 6,349 | 3,902 | 6,078 | 3,736 | 6,102 | 3,750 |
| April..... | 6,414 | 4,066 | 6,316 | 4,004 | 6,141 | 3,894 | 6,015 | 3,813 |
| May..... | 6,501 | 3,987 | 6,619 | 4,059 | 6,239 | 3,827 | 6,359 | 3,900 |
| June..... | 6,105 | 3,868 | 6,159 | 3,902 | 5,782 | 3,664 | 5,893 | 3,733 |
| July..... | 6,041 | 3,703 | 6,037 | 3,700 | 5,721 | 3,506 | 5,743 | 3,520 |
| August..... | 6,124 | 3,737 | 6,119 | 3,734 | 5,821 | 3,552 | 5,765 | 3,518 |
| September..... | 5,926 | 3,720 | 6,111 | 3,836 | 5,633 | 3,536 | 5,771 | 3,623 |
| October..... | 6,178 | 3,737 | 6,083 | 3,679 | 5,894 | 3,565 | 5,824 | 3,523 |
| November..... | 6,121 | 3,824 | 6,165 | 3,851 | 5,889 | 3,678 | 5,871 | 3,668 |
| December..... | 5,956 | 3,599 | 6,217 | 3,757 | 5,726 | 3,460 | 6,009 | 3,631 |

¹ Includes termination of covered inpatient care without discharge.

² Annual, semiannual, and quarterly data subject to revision as explained in the text.

³ Represents covered days of inpatient care used during the specified

month or period.

⁴ Based on average enrollment for the specified period.

⁵ Represents covered days of care used in stays for discharges in the specified month or period and may include days used in earlier months or periods.

of admissions for which benefits were exhausted in September 1966.

For data other than charges, most of the CMS tables display both the estimate and the annual rate per 1,000 enrolled. The actual numbers measure the total inpatient hospital use covered by Medicare. The rate data, however, permit analysis of possible changing patterns of use by the aged as a group because increases in numbers created by a growing population, as well as differences created by the number of days in the month, can be eliminated. In presenting data from this survey, no attempt has been made to relate the number of admissions in a period to the number of persons who may have been hospitalized once or more than once in the period.

Charges

Total charges per day rose steadily from \$42 in July 1966 to \$53 in December 1967 for short-

stay hospitals, as shown by the data in table 2. This increase, coupled with the growth in the HI population, explains the rising total charges. The upward trend in total charges is shown by a significant increase between each pair of calendar quarters except the second and third quarters of 1967. An interesting feature of the charge data is the consistency of the proportion covered (98 percent) and the proportion reimbursed (80.5 percent) throughout the 18-month period.

Age and Sex

The patterns of hospital utilization for the two age groups in table 4 are significantly different. The annual rate of discharges per 1,000 enrolled is much higher for the group aged 75 and over than for those aged 65–74 (chart 2). The older group averaged 15.1 covered days of care per discharge in 1967 in contrast to 13.0 days for

those in the age group 65-74. Total charges per day, however, are less for those aged 75 and over.

There is a pattern of shorter stays with higher total charges per day for men. A comparison of discharge rates for men and women shows that men are about 10 percent more likely than women to be hospitalized (table 5). Because of the larger number of older women, however, their aggregate number of hospital stays is considerably greater than the number for men. The data in chart 3, based on discharges in 1967 for all hospitals, illustrate the differing utilization rates by men and women and by age group. The data on covered days of care per 1,000 reflect the variation in discharge rate and covered days of care per discharge.

RELIABILITY OF ESTIMATES

Since the estimates are based on a sample, they may differ somewhat, because of sampling

CHART 3.—Covered days of care per 1,000 enrolled population, by sex and by age, 1967

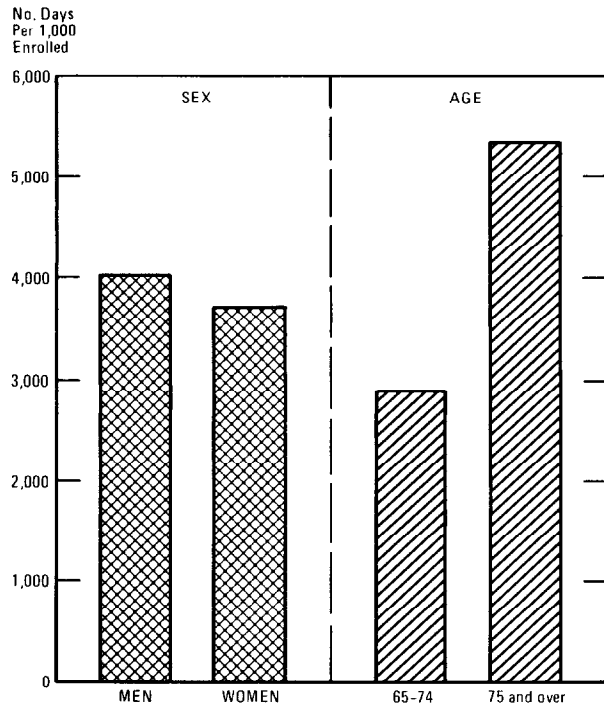


TABLE 4.—Current Medicare Survey, Hospital Insurance Sample: Estimated number of discharges¹ in all hospitals, covered days of care, rates per 1,000 enrollees, and total charges per day, by age and period of discharge, July 1966–December 1967

| Month or period ² of discharge | Aged 65-74 | | | | | Total charges per day | Aged 75 and over | | | | | Total charges per day |
|---|-----------------------|--|-----------------------|--|---------------|-----------------------|-----------------------|--|-----------------------|--|---------------|-----------------------|
| | Discharges | | Covered days of care | | | | Discharges | | Covered days of care | | | |
| | Number (in thousands) | Annual rate per 1,000 enrollees ³ | Number (in thousands) | Annual rate per 1,000 enrollees ³ | Per discharge | | Number (in thousands) | Annual rate per 1,000 enrollees ³ | Number (in thousands) | Annual rate per 1,000 enrollees ³ | Per discharge | |
| July 1966–June 1967 | 2,617 | 220 | 33,094 | 2,778 | 12.6 | \$47 | 2,532 | 353 | 36,837 | 5,137 | 14.6 | \$43 |
| January–December 1967 | 2,678 | 224 | 34,840 | 2,915 | 13.0 | 51 | 2,597 | 355 | 39,130 | 5,346 | 15.1 | 47 |
| July–December 1966 | 1,315 | 219 | 16,032 | 2,670 | 12.2 | 45 | 1,185 | 331 | 16,551 | 4,627 | 14.0 | 40 |
| January–June 1967 | 1,303 | 220 | 17,062 | 2,888 | 13.1 | 49 | 1,347 | 375 | 20,286 | 5,646 | 15.1 | 46 |
| July–December 1967 | 1,375 | 227 | 17,777 | 2,940 | 12.9 | 53 | 1,250 | 335 | 18,845 | 5,066 | 15.1 | 48 |
| July–September 1966 | 651 | 217 | 7,345 | 2,448 | 11.3 | 44 | 595 | 334 | 7,823 | 4,391 | 13.1 | 39 |
| October–December 1966 | 664 | 221 | 8,687 | 2,891 | 13.1 | 46 | 590 | 328 | 8,729 | 4,862 | 14.8 | 42 |
| January–March 1967 | 623 | 212 | 8,329 | 2,835 | 13.4 | 48 | 677 | 381 | 10,055 | 5,658 | 14.9 | 45 |
| April–June 1967 | 680 | 229 | 8,733 | 2,940 | 12.8 | 50 | 670 | 369 | 10,230 | 5,633 | 15.3 | 46 |
| July–September 1967 | 683 | 227 | 8,783 | 2,916 | 12.9 | 53 | 625 | 337 | 9,411 | 5,083 | 15.1 | 47 |
| October–December 1967 | 692 | 228 | 8,994 | 2,965 | 13.0 | 54 | 625 | 333 | 9,434 | 5,030 | 15.1 | 49 |
| 1966: | | | | | | | | | | | | |
| July | 236 | 234 | 1,903 | 1,882 | 8.1 | 44 | 216 | 362 | 1,821 | 3,045 | 8.4 | 40 |
| August | 200 | 198 | 2,418 | 2,392 | 12.1 | 45 | 187 | 312 | 2,547 | 4,243 | 13.6 | 41 |
| September | 215 | 219 | 3,024 | 3,090 | 14.1 | 42 | 192 | 329 | 3,454 | 5,925 | 18.0 | 37 |
| October | 222 | 219 | 2,842 | 2,810 | 12.8 | 45 | 199 | 329 | 2,946 | 4,874 | 14.8 | 41 |
| November | 221 | 225 | 2,904 | 2,963 | 13.2 | 48 | 196 | 335 | 2,906 | 4,963 | 14.8 | 42 |
| December | 222 | 219 | 2,942 | 2,902 | 13.3 | 46 | 194 | 321 | 2,877 | 4,750 | 14.8 | 43 |
| 1967: | | | | | | | | | | | | |
| January | 210 | 208 | 2,837 | 2,804 | 13.5 | 47 | 232 | 381 | 3,453 | 5,664 | 14.9 | 43 |
| February | 191 | 209 | 2,616 | 2,862 | 13.7 | 49 | 211 | 382 | 3,168 | 5,728 | 15.0 | 46 |
| March | 221 | 219 | 2,876 | 2,842 | 13.0 | 49 | 233 | 379 | 3,435 | 5,587 | 14.7 | 45 |
| April | 224 | 229 | 2,846 | 2,905 | 12.7 | 50 | 222 | 371 | 3,411 | 5,707 | 15.4 | 47 |
| May | 230 | 227 | 2,951 | 2,916 | 12.8 | 51 | 234 | 378 | 3,626 | 5,861 | 15.5 | 46 |
| June | 226 | 231 | 2,936 | 3,000 | 13.0 | 50 | 214 | 357 | 3,193 | 5,324 | 14.9 | 46 |
| July | 230 | 228 | 2,867 | 2,837 | 12.4 | 53 | 204 | 329 | 3,144 | 5,064 | 15.4 | 46 |
| August | 225 | 222 | 2,957 | 2,914 | 13.1 | 53 | 218 | 350 | 3,125 | 5,009 | 14.3 | 48 |
| September | 227 | 230 | 2,958 | 3,000 | 13.0 | 54 | 203 | 334 | 3,142 | 5,178 | 15.5 | 47 |
| October | 224 | 219 | 2,939 | 2,872 | 13.1 | 52 | 205 | 326 | 3,136 | 4,977 | 15.3 | 49 |
| November | 227 | 229 | 3,071 | 3,104 | 13.5 | 55 | 207 | 338 | 3,075 | 5,028 | 14.9 | 48 |
| December | 241 | 236 | 2,985 | 2,922 | 12.4 | 54 | 213 | 336 | 3,222 | 5,086 | 15.1 | 51 |

¹ Includes termination of covered inpatient care without discharge.
² Annual, semiannual, and quarterly data subject to revision as explained

in the text.
³ Based on average enrollment for the specified period.

TABLE 5.—Current Medicare Survey, Hospital Insurance Sample: Estimated number of discharges¹ in all hospitals, covered days of care, rates per 1,000 enrollees, and total charges per day, by sex and period of discharge, July 1966–December 1967

| Month or period ² of discharge | Men | | | | | | Women | | | | | |
|---|-----------------------|--|-----------------------|--|---------------|-----------------------|-----------------------|--|-----------------------|--|---------------|-----------------------|
| | Discharges | | Covered days of care | | | Total charges per day | Discharges | | Covered days of care | | | Total charges per day |
| | Number (in thousands) | Annual rate per 1,000 enrollees ³ | Number (in thousands) | Annual rate per 1,000 enrollees ³ | Per discharge | | Number (in thousands) | Annual rate per 1,000 enrollees ³ | Number (in thousands) | Annual rate per 1,000 enrollees ³ | Per discharge | |
| July 1966–June 1967 | 2,363 | 292 | 31,228 | 3,858 | 13.2 | \$47 | 2,790 | 254 | 38,748 | 3,526 | 13.9 | \$44 |
| January–December 1967 | 2,388 | 293 | 32,616 | 4,005 | 13.7 | 51 | 2,891 | 260 | 41,402 | 3,721 | 14.3 | 47 |
| July–December 1966 | 1,164 | 286 | 14,706 | 3,610 | 12.6 | 45 | 1,332 | 242 | 17,822 | 3,235 | 13.4 | 41 |
| January–June 1967 | 1,199 | 298 | 16,521 | 4,109 | 13.8 | 49 | 1,458 | 266 | 20,926 | 3,819 | 14.4 | 46 |
| July–December 1967 | 1,188 | 288 | 16,094 | 3,903 | 13.5 | 53 | 1,433 | 254 | 20,477 | 3,625 | 14.3 | 49 |
| July–September 1966 | 589 | 290 | 6,981 | 3,425 | 11.9 | 43 | 655 | 238 | 8,172 | 2,974 | 12.5 | 40 |
| October–December 1966 | 575 | 282 | 7,725 | 3,786 | 13.4 | 46 | 677 | 245 | 9,651 | 3,496 | 14.3 | 43 |
| January–March 1967 | 590 | 296 | 8,215 | 4,113 | 13.9 | 48 | 713 | 262 | 10,212 | 3,757 | 14.3 | 45 |
| April–June 1967 | 609 | 301 | 8,307 | 4,104 | 13.6 | 50 | 745 | 270 | 10,714 | 3,879 | 14.4 | 47 |
| July–September 1967 | 585 | 290 | 8,022 | 3,907 | 13.5 | 52 | 712 | 253 | 10,161 | 3,616 | 14.3 | 49 |
| October–December 1967 | 594 | 287 | 8,072 | 3,900 | 13.6 | 54 | 721 | 254 | 10,315 | 3,634 | 14.3 | 50 |
| 1966: | | | | | | | | | | | | |
| July | 213 | 311 | 1,665 | 2,431 | 7.8 | 43 | 240 | 259 | 2,060 | 2,229 | 8.5 | 40 |
| August | 190 | 278 | 2,401 | 3,504 | 12.6 | 43 | 196 | 212 | 2,557 | 2,761 | 13.0 | 42 |
| September | 186 | 280 | 2,915 | 4,393 | 15.6 | 41 | 220 | 244 | 3,555 | 3,960 | 16.1 | 37 |
| October | 191 | 278 | 2,593 | 3,778 | 13.5 | 44 | 229 | 247 | 3,179 | 3,420 | 13.8 | 41 |
| November | 192 | 288 | 2,541 | 3,819 | 13.2 | 47 | 225 | 250 | 3,264 | 3,626 | 14.5 | 43 |
| December | 192 | 279 | 2,591 | 3,765 | 13.4 | 46 | 223 | 239 | 3,208 | 3,445 | 14.4 | 43 |
| 1967: | | | | | | | | | | | | |
| January | 191 | 278 | 2,601 | 3,787 | 13.6 | 46 | 253 | 271 | 3,704 | 3,965 | 14.6 | 43 |
| February | 186 | 300 | 2,652 | 4,268 | 14.2 | 48 | 217 | 257 | 3,158 | 3,735 | 14.5 | 45 |
| March | 213 | 309 | 2,962 | 4,300 | 13.9 | 49 | 243 | 259 | 3,350 | 3,571 | 13.8 | 45 |
| April | 197 | 296 | 2,790 | 4,179 | 14.1 | 48 | 250 | 275 | 3,498 | 3,845 | 13.9 | 47 |
| May | 209 | 304 | 2,850 | 4,134 | 13.6 | 51 | 256 | 272 | 3,745 | 3,980 | 14.6 | 46 |
| June | 202 | 303 | 2,667 | 3,999 | 13.1 | 50 | 239 | 262 | 3,471 | 3,808 | 14.5 | 46 |
| July | 194 | 282 | 2,560 | 3,716 | 13.1 | 51 | 240 | 254 | 3,447 | 3,656 | 14.3 | 47 |
| August | 202 | 292 | 2,695 | 3,895 | 13.3 | 51 | 241 | 254 | 3,383 | 3,573 | 14.0 | 49 |
| September | 199 | 295 | 2,787 | 4,115 | 13.9 | 51 | 231 | 251 | 3,332 | 3,619 | 14.4 | 48 |
| October | 193 | 277 | 2,691 | 3,856 | 13.9 | 52 | 236 | 247 | 3,371 | 3,528 | 14.3 | 49 |
| November | 194 | 287 | 2,686 | 3,979 | 13.8 | 53 | 239 | 258 | 3,444 | 3,720 | 14.4 | 49 |
| December | 207 | 297 | 2,695 | 3,866 | 13.0 | 54 | 246 | 257 | 3,500 | 3,655 | 14.2 | 50 |

¹ Includes termination of covered inpatient care without discharge.

² Annual, semiannual, and quarterly data subject to revision as explained

in the text.

³ Based on average enrollment for the specified period.

variability, from the data that would have been available if the same information had been tabulated for the entire universe of hospital admissions. The data may also differ from the results of statistical compilations of information from the administrative records because of identifiable nonsampling factors in the sample or full universe processing. In addition, as noted in the discussion of the source of the data, some of the data used for these sample estimates are based on information collected independently and directly from hospitals; they may therefore differ because of differential aspects of nonsampling error. As in any data collection, then, the estimates from the Current Medicare Survey shown here are subject to errors of response, reporting, and processing, and subject to sampling variability as well. Statistical compilations of information from the administrative records, however, may also be subject to errors of omission or incompleteness as well as those related to processing and, where sampling is employed, to sampling variability.

The standard error is primarily a measure of sampling variability—that is, of the variations that occur by chance, because a sample was used rather than the whole universe. To provide approximate standard errors, several simplifying assumptions were made in the preparation of the estimates of standard error shown in table 6. To some extent these rough speculated standard errors are also intended in part to measure the effect of response errors but not to measure any systematic biases in these sample estimates or the data from administrative records. The chances are about 68 out of 100 that an estimate from the Current Medicare Survey would differ from the results of the entire universe by less than the approximate standard errors shown below. The chances are about 95 out of 100 that the difference would be less than twice the standard error. The chances are about 99 out of 100 that the difference would be less than two and one-half times the standard errors shown. It may be noted that the rough approximations to the standard

TABLE 6.—Approximate standard errors for specified estimates

| Item | Annual | | Semiannual | | Quarterly | | Monthly ¹ | | July 1966 | | August 1966 | | September 1966 | |
|--|-------------------------------|-----------------|-------------------------------|-----------------|-------------------------------|-----------------|-------------------------------|-----------------|------------------------|-----------------|------------------------|-----------------|------------------------|-----------------|
| | Range of applicable estimates | Stand-ard error | Range of applicable estimates | Stand-ard error | Range of applicable estimates | Stand-ard error | Range of applicable estimates | Stand-ard error | Esti-mate ² | Stand-ard error | Esti-mate ² | Stand-ard error | Esti-mate ² | Stand-ard error |
| <i>Total</i> | | | | | | | | | | | | | | |
| Number of admissions (in thousands)..... | 5,200-5,400 | 28 | 2,600-2,700 | 20 | 1,200-1,450 | 14 | 375-475 | 8 | 647 | 6 | 400 | 11 | 403 | 4 |
| Number of discharges (in thousands)..... | 5,000-5,300 | 28 | 2,400-2,700 | 20 | 1,200-1,400 | 14 | 375-475 | 8 | 453 | 6 | 388 | 9 | 406 | 7 |
| Covered days of care (in thousands)..... | 66,000-75,000 | 700 | 30,000-38,600 | 490 | 13,000-20,000 | 350 | 5,400-6,625 | 200 | 3,732 | 85 | 4,976 | 128 | 6,478 | 179 |
| Charges (in millions)..... | \$2,400-3,800 | 35 | \$1,000-1,900 | 25 | \$450-950 | 17 | \$225-350 | 10 | \$156 | 4 | \$214 | 6 | \$255 | 8 |
| Covered days of care per discharge..... | 13.6-14.0 | .10 | 13.0-14.1 | .15 | 13.9-14.1 | .20 | 13.6-14.1 | .35 | 8.2 | .14 | 12.8 | .28 | 15.9 | .39 |
| Total charges per day..... | \$45-55 | .13 | \$40-55 | .19 | \$40-55 | .26 | \$40-55 | .45 | \$41 | .38 | \$42 | .37 | \$39 | .13 |
| <i>Age and Sex Groups</i> | | | | | | | | | | | | | | |
| Number of discharges (in thousands)..... | 2,200-3,000 | 21 | 1,100-1,500 | 15 | 550-750 | 10 | 175-275 | 6 | 213 | 4 | 190 | 7 | 186 | 6 |
| Covered days of care (in thousands)..... | 30,000-42,000 | 520 | 14,000-21,000 | 370 | 7,000-11,000 | 260 | 2,000-3,800 | 150 | 1,665 | 61 | 2,401 | 92 | 2,915 | 128 |
| Covered days of care per discharge..... | 12.5-15.1 | .14 | 12.2-15.1 | .20 | 11.3-15.3 | .29 | 12.4-15.5 | .49 | 7.8 | .19 | 12.6 | .39 | 15.6 | .55 |
| Total charges per day..... | \$40-55 | .19 | \$40-55 | .26 | \$40-55 | .37 | \$40-55 | .63 | \$43 | .53 | \$43 | .52 | \$41 | .18 |

¹ For any month in the 15-month period October 1966-December 1967.

² For all hospitals.

errors are shown as being applicable to a range of estimated values for some of the published characteristics.

In table 6, the total estimates apply to entries in tables 1-3 both for all hospitals and for short-stay hospitals. The age and sex group estimates apply to tables 4 and 5. Approximate standard

errors are shown for annual, semiannual, and quarterly estimates as well as for monthly data. The range of applicable estimates includes all estimates for the specified period except that July, August, and September 1966 are shown separately because of the effects of the beginning of the program.