

Appendix C: As-Built Model Survey Data

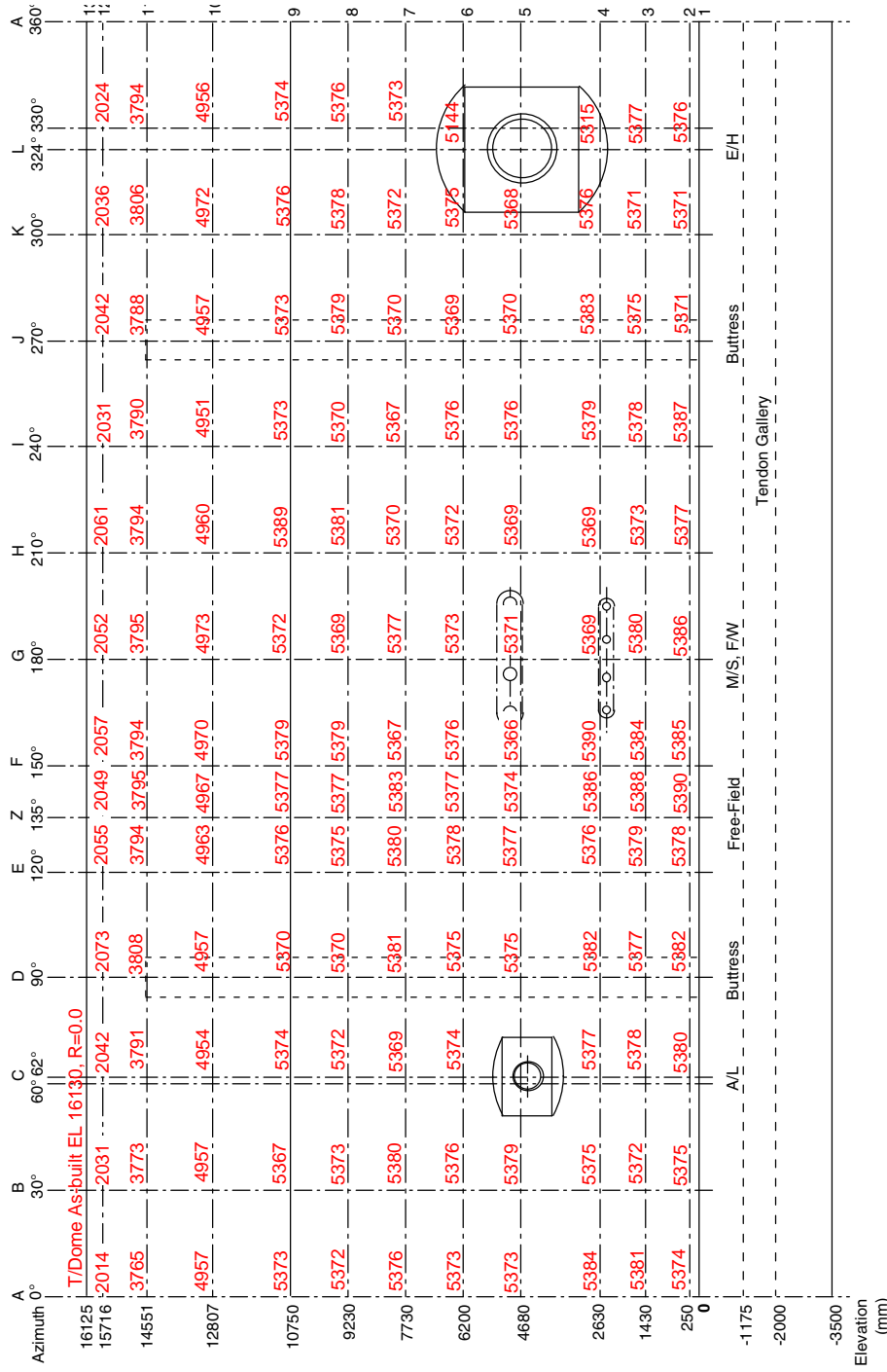


Figure C.1. As-Built Inside Radius of Cardinal Points, July 1999.

PNO	NORTHING	EASTING	STATION ELEV.	RAD. DIST FROM C/L	DESCRIPTION	NAME / LOCATION
1	838.102	299.999	-4.506		CONCRETE CONTROL TRIANGLES	CP-1
2	804.615	296.647	5.421	5.705	EQUIP. HATCH, TOP OUTSIDE	E-2
3	804.617	296.646	3.904	5.707	EQUIP. HATCH, BOTTOM OUTSIDE	E-3
4	799.993	261.886	-3.337		CONCRETE CONTROL TRIANGLES	CP-4
5	804.031	297.071	5.410	4.983	EQUIP. HATCH, TOP INSIDE	E-5
6	804.032	297.070	3.912	4.984	EQUIP. HATCH, BOTTOM INSIDE	E-6
7			-3.414		CONC. BASE 324 LIGHTNING POLE	BM-1
8			3.642		"SQUARE" PEN MARK ON STEEL	TBM @ LEVEL "C"
9			-0.003		OUTSIDE COLLAR	0-00
10			0.001		OUTSIDE COLLAR	0-90
11			-0.003		OUTSIDE COLLAR	0-180
12			0.005		OUTSIDE COLLAR	0-270
13			0.001		OUTSIDE COLLAR	0-324
14	887.561	236.383	-3.059		#5 REBAR W/ALUM. CAP	HATCHLINE SOUTH
15	829.197	278.787	-3.995		#5 REBAR W/ALUM. CAP	HATCHLINE NORTH
16	800.000	300.000	0.131	0.000	CONCRETE BASE MARK	RADIUS PT. CENTERLINE MODEL
17	*****					
18	*****					
19	*****					
20	*****					
21			-0.005		STEEL PLATE, 0.6m x 0.6m	1 -- 130
22			-0.004		STEEL PLATE, 0.6m x 0.6m	1 -- 0
23			-0.003		STEEL RIM	1 -- 30
24			0.002		STEEL RIM	1 -- 62
25			-0.004		STEEL PLATE, 0.6m x 0.6m	1 -- 90
26			-0.004		STEEL RIM	1 -- 120
27			-0.005		STEEL RIM	1 -- 135
28			-0.005		STEEL RIM	1 -- 150
29			0.001		STEEL RIM	1 -- 180
30			-0.002		STEEL RIM	1 -- 210
31			0.001		STEEL PLATE, 0.6m x 0.6m	1 -- 240
32			-0.003		STEEL RIM	1 -- 270
33			0.004		STEEL RIM	1 -- 300
34			0.000		STEEL PLATE, 0.6m x 0.6m	1 -- 324
35	805.374	300.000	0.250	5.374	2'x2' "+" ON INSIDE STEEL WALL	2 -- 0
36	804.655	302.688	0.250	5.375	2'x2' "+" ON INSIDE STEEL WALL	2 -- 30
37	802.526	304.750	0.250	5.380	2'x2' "+" ON INSIDE STEEL WALL	2 -- 62
38	800.000	305.382	0.250	5.382	2'x2' "+" ON INSIDE STEEL WALL	2 -- 90
39	797.311	304.657	0.250	5.378	2'x2' "+" ON INSIDE STEEL WALL	2 -- 120
40	796.188	303.811	0.250	5.390	2'x2' "+" ON INSIDE STEEL WALL	2 -- 135
41	795.336	302.693	0.250	5.385	2'x2' "+" ON INSIDE STEEL WALL	2 -- 150
42	794.614	300.000	0.250	5.386	2'x2' "+" ON INSIDE STEEL WALL	2 -- 180
43	795.343	297.312	0.250	5.377	2'x2' "+" ON INSIDE STEEL WALL	2 -- 210
44	797.307	295.335	0.250	5.387	2'x2' "+" ON INSIDE STEEL WALL	2 -- 240
45	800.000	294.629	0.250	5.371	2'x2' "+" ON INSIDE STEEL WALL	2 -- 270
46	802.686	295.349	0.250	5.371	2'x2' "+" ON INSIDE STEEL WALL	2 -- 300
47	804.349	296.840	0.250	5.376	2'x2' "+" ON INSIDE STEEL WALL	2 -- 324
48	805.381	300.000	1.430	5.381	2'x2' "+" ON INSIDE STEEL WALL	3 -- 0
49	804.652	302.686	1.430	5.372	2'x2' "+" ON INSIDE STEEL WALL	3 -- 30
50	802.525	304.748	1.430	5.378	2'x2' "+" ON INSIDE STEEL WALL	3 -- 62
51	800.000	305.377	1.430	5.377	2'x2' "+" ON INSIDE STEEL WALL	3 -- 90
52	797.311	304.658	1.430	5.379	2'x2' "+" ON INSIDE STEEL WALL	3 -- 120
53	796.190	303.810	1.430	5.388	2'x2' "+" ON INSIDE STEEL WALL	3 -- 135
54	795.337	302.691	1.430	5.384	2'x2' "+" ON INSIDE STEEL WALL	3 -- 150
55	794.620	300.000	1.430	5.380	2'x2' "+" ON INSIDE STEEL WALL	3 -- 180
56	795.347	297.314	1.430	5.373	2'x2' "+" ON INSIDE STEEL WALL	3 -- 210
57	797.311	295.343	1.430	5.378	2'x2' "+" ON INSIDE STEEL WALL	3 -- 240
58	800.000	294.625	1.430	5.375	2'x2' "+" ON INSIDE STEEL WALL	3 -- 270
59	802.686	295.349	1.430	5.371	2'x2' "+" ON INSIDE STEEL WALL	3 -- 300
60	804.350	296.839	1.430	5.377	2'x2' "+" ON INSIDE STEEL WALL	3 -- 324
61	805.384	300.000	2.630	5.384	2'x2' "+" ON INSIDE STEEL WALL	4 -- 0
62	804.655	302.688	2.630	5.375	2'x2' "+" ON INSIDE STEEL WALL	4 -- 30
63	802.524	304.748	2.630	5.377	2'x2' "+" ON INSIDE STEEL WALL	4 -- 62
64	800.000	305.382	2.630	5.382	2'x2' "+" ON INSIDE STEEL WALL	4 -- 90
65	797.311	304.656	2.630	5.376	2'x2' "+" ON INSIDE STEEL WALL	4 -- 120
66	796.192	303.808	2.630	5.386	2'x2' "+" ON INSIDE STEEL WALL	4 -- 135
67	795.332	302.695	2.630	5.390	2'x2' "+" ON INSIDE STEEL WALL	4 -- 150
68	794.631	300.000	2.630	5.369	2'x2' "+" ON INSIDE STEEL WALL	4 -- 180
69	795.350	297.316	2.630	5.369	2'x2' "+" ON INSIDE STEEL WALL	4 -- 210
70	797.311	295.342	2.630	5.379	2'x2' "+" ON INSIDE STEEL WALL	4 -- 240
71	800.000	294.617	2.630	5.383	2'x2' "+" ON INSIDE STEEL WALL	4 -- 270
72	802.688	295.344	2.630	5.376	2'x2' "+" ON INSIDE STEEL WALL	4 -- 300
73	804.300	296.876	2.630	5.315	2'x2' "+" ON INSIDE STEEL WALL	4 -- 324
74	805.373	300.000	4.680	5.373	2'x2' "+" ON INSIDE STEEL WALL	5 -- 0
75	804.658	302.690	4.680	5.379	2'x2' "+" ON INSIDE STEEL WALL	5 -- 30
76					"+" FALLS IN HATCH OPENING	5 -- 62 @ PERSONEL HATCH
77	800.000	305.375	4.680	5.375	2'x2' "+" ON INSIDE STEEL WALL	5 -- 90

PNO	NORTHING	EASTING	STATION ELEV.	RAD. DIST FROM C/L	DESCRIPTION	NAME / LOCATION
78	797.312	304.657	4.680	5.377	2'x2' "+" ON INSIDE STEEL WALL	5 -- 120
79	796.200	303.800	4.680	5.374	2'x2' "+" ON INSIDE STEEL WALL	5 -- 135
80	795.352	302.681	4.680	5.366	2'x2' "+" ON INSIDE STEEL WALL	5 -- 150
81	794.629	300.000	4.680	5.371	2'x2' "+" ON INSIDE STEEL WALL	5 -- 180
82	795.350	297.316	4.680	5.369	2'x2' "+" ON INSIDE STEEL WALL	5 -- 210
83	797.312	295.344	4.680	5.376	2'x2' "+" ON INSIDE STEEL WALL	5 -- 240
84	800.000	294.630	4.680	5.370	2'x2' "+" ON INSIDE STEEL WALL	5 -- 270
85	802.684	295.351	4.680	5.368	2'x2' "+" ON INSIDE STEEL WALL	5 -- 300
86					"+" FALLS IN HATCH OPENING	5 -- 324 @ EQUIPMENT HATCH
87	805.373	300.000	6.200	5.373	2'x2' "+" ON INSIDE STEEL WALL	6 -- 0
88	804.656	302.688	6.200	5.376	2'x2' "+" ON INSIDE STEEL WALL	6 -- 30
89	802.523	304.745	6.200	5.374	2'x2' "+" ON INSIDE STEEL WALL	6 -- 62
90	800.000	305.375	6.200	5.375	2'x2' "+" ON INSIDE STEEL WALL	6 -- 90
91	797.311	304.657	6.200	5.378	2'x2' "+" ON INSIDE STEEL WALL	6 -- 120
92	796.198	303.802	6.200	5.377	2'x2' "+" ON INSIDE STEEL WALL	6 -- 135
93	795.344	302.688	6.200	5.376	2'x2' "+" ON INSIDE STEEL WALL	6 -- 150
94	794.627	300.000	6.200	5.373	2'x2' "+" ON INSIDE STEEL WALL	6 -- 180
95	795.348	297.314	6.200	5.372	2'x2' "+" ON INSIDE STEEL WALL	6 -- 210
96	797.312	295.344	6.200	5.376	2'x2' "+" ON INSIDE STEEL WALL	6 -- 240
97	800.000	294.631	6.200	5.369	2'x2' "+" ON INSIDE STEEL WALL	6 -- 270
98	802.688	295.345	6.200	5.375	2'x2' "+" ON INSIDE STEEL WALL	6 -- 300
99	804.162	296.976	6.200	5.144	2'x2' "+" ON INSIDE STEEL WALL	6 -- 324
100	805.376	300.000	7.730	5.376	2'x2' "+" ON INSIDE STEEL WALL	7 -- 0
101	804.659	302.690	7.730	5.380	2'x2' "+" ON INSIDE STEEL WALL	7 -- 30
102	802.521	304.740	7.730	5.369	2'x2' "+" ON INSIDE STEEL WALL	7 -- 62
103	800.000	305.381	7.730	5.381	2'x2' "+" ON INSIDE STEEL WALL	7 -- 90
104	797.310	304.659	7.730	5.380	2'x2' "+" ON INSIDE STEEL WALL	7 -- 120
105	796.194	303.806	7.730	5.383	2'x2' "+" ON INSIDE STEEL WALL	7 -- 135
106	795.352	302.684	7.730	5.367	2'x2' "+" ON INSIDE STEEL WALL	7 -- 150
107	794.623	300.000	7.730	5.377	2'x2' "+" ON INSIDE STEEL WALL	7 -- 180
108	795.350	297.315	7.730	5.370	2'x2' "+" ON INSIDE STEEL WALL	7 -- 210
109	797.317	295.352	7.730	5.367	2'x2' "+" ON INSIDE STEEL WALL	7 -- 240
110	800.000	294.630	7.730	5.370	2'x2' "+" ON INSIDE STEEL WALL	7 -- 270
111	802.686	295.348	7.730	5.372	2'x2' "+" ON INSIDE STEEL WALL	7 -- 300
112	804.347	296.842	7.730	5.373	2'x2' "+" ON INSIDE STEEL WALL	7 -- 324
113	805.372	300.000	9.230	5.372	2'x2' "+" ON INSIDE STEEL WALL	8 -- 0
114	804.654	302.687	9.230	5.374	2'x2' "+" ON INSIDE STEEL WALL	8 -- 30
115	802.522	304.743	9.230	5.372	2'x2' "+" ON INSIDE STEEL WALL	8 -- 62
116	800.000	305.370	9.230	5.370	2'x2' "+" ON INSIDE STEEL WALL	8 -- 90
117	797.313	304.655	9.230	5.375	2'x2' "+" ON INSIDE STEEL WALL	8 -- 120
118	796.198	303.802	9.230	5.377	2'x2' "+" ON INSIDE STEEL WALL	8 -- 135
119	795.342	302.689	9.230	5.379	2'x2' "+" ON INSIDE STEEL WALL	8 -- 150
120	794.631	300.001	9.230	5.369	2'x2' "+" ON INSIDE STEEL WALL	8 -- 180
121	795.340	297.310	9.230	5.381	2'x2' "+" ON INSIDE STEEL WALL	8 -- 210
122	797.315	295.349	9.230	5.370	2'x2' "+" ON INSIDE STEEL WALL	8 -- 240
123	800.000	294.621	9.230	5.379	2'x2' "+" ON INSIDE STEEL WALL	8 -- 270
124	802.689	295.343	9.230	5.378	2'x2' "+" ON INSIDE STEEL WALL	8 -- 300
125	804.349	296.840	9.230	5.376	2'x2' "+" ON INSIDE STEEL WALL	8 -- 324
126	805.373	300.000	10.750	5.373	2'x2' "+" ON INSIDE STEEL WALL	9 -- 0
127	804.648	302.684	10.750	5.367	2'x2' "+" ON INSIDE STEEL WALL	9 -- 30
128	802.523	304.745	10.750	5.374	2'x2' "+" ON INSIDE STEEL WALL	9 -- 62
129	800.000	305.370	10.750	5.370	2'x2' "+" ON INSIDE STEEL WALL	9 -- 90
130	797.312	304.656	10.750	5.376	2'x2' "+" ON INSIDE STEEL WALL	9 -- 120
131	796.198	303.802	10.750	5.377	2'x2' "+" ON INSIDE STEEL WALL	9 -- 135
132	795.342	302.689	10.750	5.379	2'x2' "+" ON INSIDE STEEL WALL	9 -- 150
133	794.628	300.000	10.750	5.372	2'x2' "+" ON INSIDE STEEL WALL	9 -- 180
134	795.333	297.306	10.750	5.389	2'x2' "+" ON INSIDE STEEL WALL	9 -- 210
135	797.314	295.347	10.750	5.373	2'x2' "+" ON INSIDE STEEL WALL	9 -- 240
136	800.000	294.627	10.750	5.373	2'x2' "+" ON INSIDE STEEL WALL	9 -- 270
137	802.688	295.344	10.750	5.376	2'x2' "+" ON INSIDE STEEL WALL	9 -- 300
138	804.348	296.841	10.750	5.374	2'x2' "+" ON INSIDE STEEL WALL	9 -- 324
139	804.957	300.000	12.807	4.957	2'x2' "+" ON INSIDE STEEL WALL	10 -- 0
140	804.294	302.478	12.807	4.957	2'x2' "+" ON INSIDE STEEL WALL	10 -- 30
141	802.326	304.374	12.807	4.954	2'x2' "+" ON INSIDE STEEL WALL	10 -- 62
142	800.002	304.957	12.807	4.957	2'x2' "+" ON INSIDE STEEL WALL	10 -- 90
143	797.518	304.298	12.807	4.963	2'x2' "+" ON INSIDE STEEL WALL	10 -- 120
144	796.488	303.512	12.807	4.967	2'x2' "+" ON INSIDE STEEL WALL	10 -- 135
145	795.696	302.485	12.807	4.970	2'x2' "+" ON INSIDE STEEL WALL	10 -- 150
146	795.027	300.000	12.807	4.973	2'x2' "+" ON INSIDE STEEL WALL	10 -- 180
147	795.705	297.519	12.807	4.960	2'x2' "+" ON INSIDE STEEL WALL	10 -- 210
148	797.525	295.712	12.807	4.951	2'x2' "+" ON INSIDE STEEL WALL	10 -- 240
149	800.004	295.043	12.807	4.957	2'x2' "+" ON INSIDE STEEL WALL	10 -- 270
150	802.486	295.694	12.807	4.972	2'x2' "+" ON INSIDE STEEL WALL	10 -- 300
151	804.009	297.087	12.807	4.956	2'x2' "+" ON INSIDE STEEL WALL	10 -- 324
152	803.765	300.000	14.511	3.765	2'x2' "+" ON INSIDE STEEL WALL	11 -- 0
153	803.266	301.888	14.511	3.773	2'x2' "+" ON INSIDE STEEL WALL	11 -- 30
154	801.777	303.349	14.511	3.791	2'x2' "+" ON INSIDE STEEL WALL	11 -- 62

PNO	NORTHING	EASTING	STATION ELEV.	RAD. DIST FROM C/L	DESCRIPTION	NAME / LOCATION
155	799.997	303.808	14.511	3.808	2'x2' "+" ON INSIDE STEEL WALL	11 -- 90
156	798.103	303.286	14.511	3.794	2'x2' "+" ON INSIDE STEEL WALL	11 -- 120
157	797.316	302.682	14.511	3.795	2'x2' "+" ON INSIDE STEEL WALL	11 -- 135
158	796.714	301.896	14.511	3.794	2'x2' "+" ON INSIDE STEEL WALL	11 -- 150
159	796.205	300.000	14.511	3.795	2'x2' "+" ON INSIDE STEEL WALL	11 -- 180
160	796.713	298.106	14.511	3.794	2'x2' "+" ON INSIDE STEEL WALL	11 -- 210
161	798.102	296.720	14.511	3.790	2'x2' "+" ON INSIDE STEEL WALL	11 -- 240
162	799.997	296.212	14.511	3.788	2'x2' "+" ON INSIDE STEEL WALL	11 -- 270
163	801.903	296.704	14.511	3.806	2'x2' "+" ON INSIDE STEEL WALL	11 -- 300
164	803.069	297.770	14.511	3.794	2'x2' "+" ON INSIDE STEEL WALL	11 -- 324
165	802.014	300.000	15.716	2.014	2'x2' "+" ON INSIDE STEEL WALL	12 -- 0
166	801.759	301.016	15.716	2.031	2'x2' "+" ON INSIDE STEEL WALL	12 -- 30
167	800.959	301.803	15.716	2.042	2'x2' "+" ON INSIDE STEEL WALL	12 -- 62
168	800.000	302.073	15.716	2.073	2'x2' "+" ON INSIDE STEEL WALL	12 -- 90
169	798.973	301.780	15.716	2.055	2'x2' "+" ON INSIDE STEEL WALL	12 -- 120
170	798.551	301.449	15.716	2.049	2'x2' "+" ON INSIDE STEEL WALL	12 -- 135
171	798.219	301.029	15.716	2.057	2'x2' "+" ON INSIDE STEEL WALL	12 -- 150
172	797.948	300.000	15.716	2.052	2'x2' "+" ON INSIDE STEEL WALL	12 -- 180
173	798.215	298.970	15.716	2.061	2'x2' "+" ON INSIDE STEEL WALL	12 -- 210
174	798.985	298.241	15.716	2.031	2'x2' "+" ON INSIDE STEEL WALL	12 -- 240
175	800.000	297.958	15.716	2.042	2'x2' "+" ON INSIDE STEEL WALL	12 -- 270
176	801.018	298.237	15.716	2.036	2'x2' "+" ON INSIDE STEEL WALL	12 -- 300
177	801.637	298.810	15.716	2.024	2'x2' "+" ON INSIDE STEEL WALL	12 -- 324
178	800.000	300.000	16.130	0.000	DOME TOP CENTERLINE MARK	RADIUS PT.- CENTERLINE MODE
179	794.813	301.330	2.545	5.355	TOP OF PIPE @ WALL- LEVEL"B"	ACCESS PIPE
180	794.671	300.507	2.544	5.353	TOP OF PIPE @ WALL- LEVEL"B"	ACCESS PIPE
181	794.671	299.507	2.544	5.352	TOP OF PIPE @ WALL- LEVEL"B"	ACCESS PIPE
182	794.821	298.682	2.544	5.344	TOP OF PIPE @ WALL- LEVEL"B"	ACCESS PIPE
183	794.852	301.396	5.134	5.334	TOP OF PIPE @ WALL- LEVEL"C"	ACCESS PIPE
184	794.682	300.407	5.131	5.333	TOP OF PIPE @ WALL- LEVEL"C"	ACCESS PIPE
185	794.677	299.580	5.131	5.340	TOP OF PIPE @ WALL- LEVEL"C"	ACCESS PIPE
186	794.851	298.599	5.130	5.336	TOP OF PIPE @ WALL- LEVEL"C"	ACCESS PIPE
187	802.432	304.590	4.193	5.195	INSIDE INVERT OF PIPE	CL. PERSONEL HATCH