

Airports GIS

Wrap Up and Resources

Presented to | FAA Regions | Alaskan
By | Gil Neumann, APP 400 | Thomas Wade, ASW 611
Date | October 19 20, 2011

1 Regional Workshop - AAL
October 19-20, 2011

Federal Aviation
Administration



FAA Resources | Airports GIS SMEs

TECHNICAL / ENGINEERING / SPECS

AIRPORTS GIS DEVELOPMENT TEAM

- John Dermody, AAS-100
- Dr. Mike Mc Nerney, AAS-101
- Shyam Parhi, AAS-100 (Programmer)
- National Airports Engineering Website
- Airports GIS Website
- Help Desk/Phone
 - Website Link; 888.987.2447
- Contract Support
 - Timothy C. Roe (Program Manager)
 - Tim.CTR.Roe@faa.gov
 - (703) 564-8204
 - Taurice McMillian
 - Taurice.CTR.McMillian@faa.gov
 - (202) 618-5619
 - Todd Johnson (Plans Review, Help Desk, IDLE)
 - Todd.G-CTR.Johnson@faa.gov
 - (623) 980-8485

POLICY AND IMPLEMENTATION

- Danielle Rinsler, APP-401
- Gil Neumann, APP-400 (Planner)
 - National Policy
- Thomas Wade, ASW-610
 - Implementation Issues
- National Server (Q:\) Folder
 - Q:\National\AGIS National Team
- National Airports Planning Website

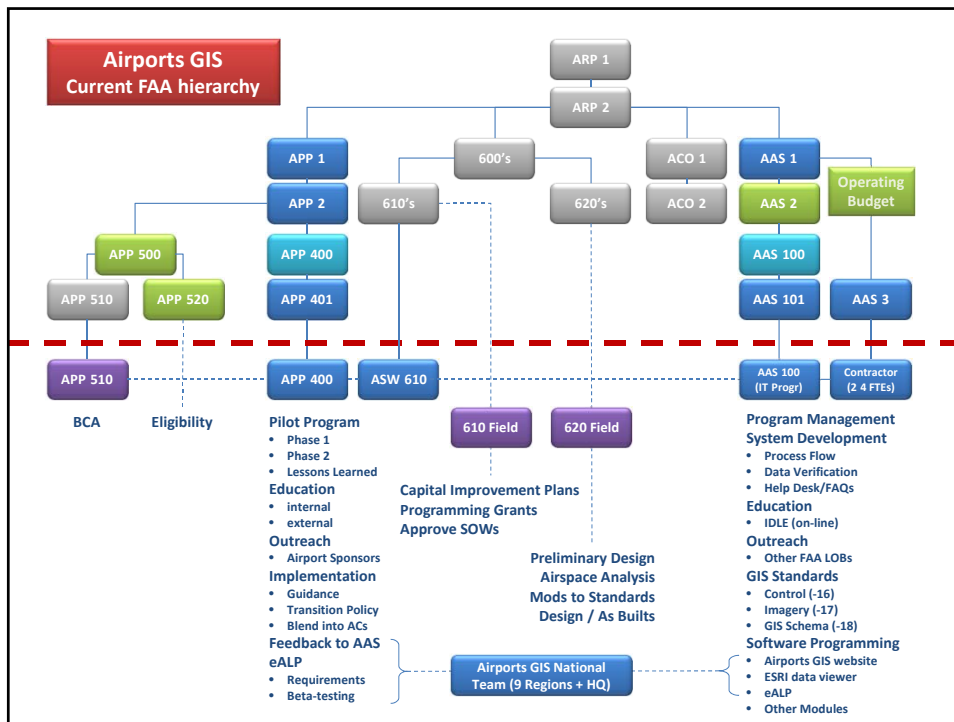
ARP FIELD POINTS-OF-CONTACT

- AAL | Matt Freeman
- ANM | Mary Vargas
- AWP | Fernando Yanez
- AGL | Paul Lo
- AEA | Eleanor Scorgia and Jim Fels
- ASO | Brian Creasy and Rebecca Henry
- ACE | Scott Tener
- ASW | Glenn Boles
- ANE | Ralph Nicosia-Rusin

2 Regional Workshop - AAL
October 19-20, 2011

Federal Aviation
Administration





Resources | National Geodetic Survey

- UDDF data
- PACS/SACS
 - (OPUS)

<http://www.ngs.noaa.gov/>

OPUS: Online Positioning User Service

upload | view | about

How to use OPUS

What is OPUS? | input | discussion | report | FAQs

The Online Positioning User Service (OPUS) provides you with simplified access to high-accuracy National Spatial Reference System (NSRS) coordinates. All you need is a clear view of the sky and a survey-grade Global Positioning System (GPS) receiver.

OPUS processes your GPS data files with the same models and tools which help manage the Nation's Continuously Operating Reference Station (CORS) network, resulting in coordinates which are both highly accurate and highly consistent with other users. Your computed NSRS position is sent privately to you, and, if you choose, can also be shared publicly via the NSRS database.

OPUS is highly automated and requires minimal user input. To use properly, please familiarize yourself with the information below.

your position → **OPUS** → **geodetic data** → **publish to NGS database**

4 Regional Workshop - AAL
October 19-20, 2011

Federal Aviation
Administration

Resources | FAA - AVN

- **Runway Ends**
<http://avnwww.jcabi.gov/datasheet/>

5 Regional Workshop - AAL
 October 19-20, 2011



Resources | Airports GIS website

<https://Airports-GIS.faa.gov/>

- **IDLE (after Login)**
- **Frequently Asked Questions**
- **On-line help**
- **Phone: 888.987.2447**
- **Support Desk (from Login Page)**
- **Plan Templates**
- **Newsletters**
- **Surveying White Paper**

6 Regional Workshop - AAL
 October 19-20, 2011



Resources | Airports GIS website (continued)

Airports GIS

- Logon
- Newsletters/Publications
- AGIS: Online Help
- AGIS: Issues/Questions
- FAQs
- Airports**
 - Steps to Follow
 - Airport Regions
 - ADP
 - AC 150/5300
 - Contractor Security
 - Airport Sponsor Benefits
 - Planning Considerations
 - Surveyors
 - Surveyor Intro
 - Airport Familiarization
 - Aviation Glossary
 - ADP
 - Airport Visual Aids
 - Airport Markings/Signs
 - Phonetic Alphabet

Step 1 – Funding the Survey

The survey may be eligible for [Airport Improvement Program \(AIP\)](#) grant funds. To review AIP eligibility for the survey, contact your local [FAA Airports District Office \(ADO\)](#) or [Airports Regional Office](#).

Step 2 – Hiring a Surveyor

To assist in the process of hiring a surveyor to do your survey, we have provided examples of the forms you will need:

- [Request For Proposal](#)
- [Statement of Work \(Template\)](#)
- [SOW Illustration for an Aeronautical Survey and Airport Airspace Analysis](#) (Survey project supports approach procedure development)
 - [SOW Illustration for a General Construction Project](#) (Survey project does not involve survey data)
 - [SOW Illustration for an eALP Project](#) (Available soon)
 - [Addendum to Statement of Work](#) (Other survey activities such as sub-surface utilities, Category (C) operations, etc.)
 - [Selection Process](#)

These are examples only, and do not take the place of any State or local requirements, guidelines, or formats you may be required to follow.

Step 3 – Conducting the Survey

To ensure safety, all survey data collected by your contracted surveyor must meet the accuracy requirements in Advisory Circulars AC150/5300 listed below. These advisory circulars identify the procedures to follow so you collect the data to the required accuracies and submit your data in the proper format. All data must be in the proper format in order for the National Geodetic Survey (NGS) to validate the accuracy and approve the collected data.

- [AC 150/5300-14: General Guidance and Specifications for Aeronautical Surveys - Establishment of Geoidetic Control and Submission to the National Geodetic Survey](#)
- [AC 150/5300-17: General Guidance and Specifications for Aeronautical Surveys - Airport Strategy, Acquisition and Submission to the National Geodetic Survey](#)
- [AC 150/5300-18: General Guidance and Specifications for Aeronautical Surveys - Airport Survey Data Collection and Geographic Information System Standards](#)

Submission of the completed survey must be done through the Airport GIS web site. A link is available at the top right of this page.

Questions?

For additional information, please contact the [AGIS Support Desk](#).

7 Regional Workshop - AAL
October 19-20, 2011

Federal Aviation
Administration



Resources | Airports GIS website (demo version)

Airports GIS Home

<p>My Account</p> <p>Welcome Thomas Wade.</p> <ul style="list-style-type: none"> Update Account Information Change Password 	<p>Survey Projects</p> <p>Manage your survey projects.</p> <ul style="list-style-type: none"> My Survey Projects Create New Survey Project Test a Survey File 	<p>Airport Data Changes</p> <ul style="list-style-type: none"> All ADCs All Active ADCs My Active ADCs (15) Completed ADCs 	<p>Airport Data Inquiries</p> <ul style="list-style-type: none"> All ADIs All Active ADIs My Active ADIs (0) Completed ADIs
<p>eALP Projects</p> <p>Manage your electronic Airport Layout Plan (eALP) projects.</p> <ul style="list-style-type: none"> My eALP Projects Create New eALP Project 	<p>Runway Safety Area Inventory</p> <p>The Runway Safety Area policy (Order 5200.8, Runway Safety Area Program) requires regional offices to collect and maintain data for each Runway Safety Area (RSA).</p> <ul style="list-style-type: none"> Download RSAI database 	<p>Help & Training</p> <ul style="list-style-type: none"> Support Desk Online Help IDLE Training Site <p><i>Note: points to IDLE test system</i></p>	<p>Resources</p> <ul style="list-style-type: none"> About Airports GIS National Geodetic Survey (NGS) Aviation System Standards (AVN) FAA Advisory Circulars
<p>System Information</p> <p>Version 2.6 RC1 - deployed 06/25/2010.</p> <ul style="list-style-type: none"> View release history and notes 	<p>Administration</p> <p>These functions are only for system administrators.</p> <ul style="list-style-type: none"> User Management Users Pending Approval (0) More administration tools... 		

8 Regional Workshop - AAL
October 19-20, 2011

Federal Aviation
Administration



Resources | FAA Facilities

Facility Service Equipment Profile (FSEP) - Search Results										
ID	Type	City	State	ATOW	GSA	Sector	Monit	Status	Fac Code	Fac Description
JDL	NASEB	JUNEAU	AK	WWY1B	0162	AL2EH	ZAN	S	41A03D	FIBERGLASS 101 - 200 SQUARE FEET
JDL	TANK	JUNEAU	AK	WWY1B	0162	AL2EH	ZAN	S	41PA9G	AST ATMOSPHERIC TANK W/DIESEL 1001 TO 1319 GALLONS
JDL	SX	JUNEAU	AK	WWY1B	0162	AL2EH	ZAN	D	48330B	LEGACY DIESEL 26 TO 100 KVA
JDL	LOC	JUNEAU	AK	WWY1B	0162	AL2EH	ZAN	D	314DCA	MARK I LDA SOLID STATE SINGLE
JDL	DME	JUNEAU	AK	WWY1B	0162	AL2EH	ZAN	D	312EH	ASII SINGLE SYS COLLOCATED W/LOC
JDLA	SX	JUNEAU	AK	WWY1B	0162	AL2EH	ZAN	D	48333A	LEGACY PROPANE 1 TO 25 KVA
JDLA	SX	JUNEAU	AK	WWY1B	0162	AL2EH	ZAN	D	48333B	LEGACY PROPANE 26 TO 100 KVA
JDLA	LOC	JUNEAU	WI	WCY2C		GL1GB	MOC	D	314NGA	MARK10 LOG PERIODIC SINGLE
JNE	DME	JUNEAU	WI	WCY2C		GL1GB	MOC	D	312EGE	AERCOM 5351 SINGLE SYS COLLOCATED W/LOC
JNU	VOT	JUNEAU	AK	WWY1B	0162	AL2EH	ZAN	D	111JAA	VOR TEST FAC SOLID STATE STANDARD FACILITY COLLOCATED
JNU	VASI	JUNEAU	AK	WWY1B	0162	AL2EH	ZAN	D	33162B	SEPCO SUBSTATION 4 BOX 2-BAR SYSTEM
JNU	RVR	JUNEAU	AK	WWY1B	0162	AL2EH	ZAN	D	447AME	TELEDYNE FA-10268 1-4 VISIBILITY SENSORS FOR TELEDYNE
JNU	WRS	JUNEAU	AK	WWY1B	0162	AL2EH	ZAN	D	5127CA	WRS STANDARD FACILITY
JNUA	VASI	JUNEAU	AK	WWY1B	0162	AL2EH	ZAN	D	33162B	SEPCO SUBSTATION 4 BOX 2-BAR SYSTEM
UNU	NDB	JUNEAU	WI	WCY2C		GL1GB	MOC	D	322GAA	SOLID STATE MH WITH UP TO 2000 WATTS RATED OUTPUT POWER

NAVAIDS on and near Airport

- **Facility, Services and Equipment Profile (FSEP)**
 - technet.faa.gov (Internal FAA - FSEP)
- **iOE/AAA or FAA | Tech Ops - Service Center**
 - Need LOCID/ARP (Lat/Long) and Radius (Nautical Miles)
- **Google EON**

Regional Workshop - AAL

9 October 19-20, 2011

Federal Aviation
Administration



Resources | FAA Facilities (continued)

Search for: Facilities

Please enter desired criteria to perform a Search for Facilities.

Facility Name:

State: City:

Facility Type:

You may search about (center point):

A specific airport: IAD Airport ID:

A specific facility: Facility ID:

A specific OE Case: OE Case Number:

A specific NRA Case: NRA Case Number:

A specific NR Case: NR Case Number:

A specific location: Latitude: Longitude:

Search radius: Nautical miles

Search Reset Clear

Federal Aviation
Administration

Find: 2010 ASW NRA GO

Cases Tools

- Assigned Work - OE
- Assigned Work - NRA
- Assigned Work - LAP
- Review e-Filed Cases - NRA
- Enter New NRA Case Data
- Enter/Edit LAP Case
- Search
- Search LAP Case
- Advanced Search
- ADD Follow Up

Search for:

Search

Search LAP Case

Advanced Search

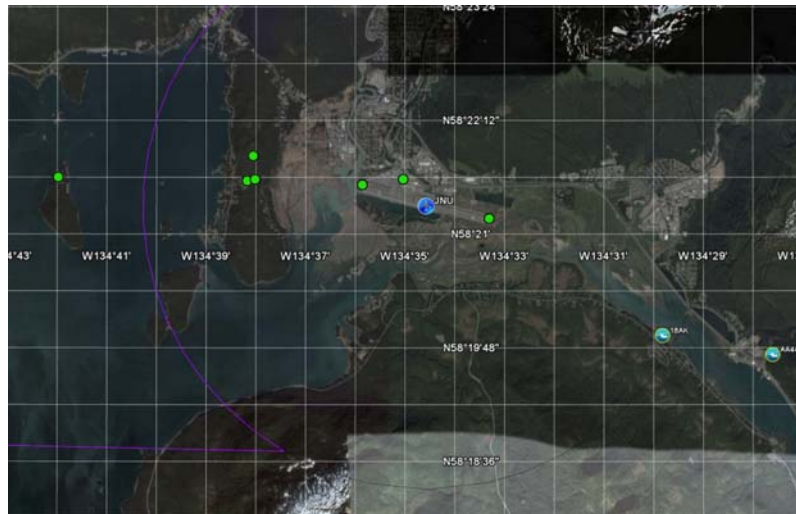
ADD Follow Up

10 Regional Workshop - AAL
October 19-20, 2011

Federal Aviation
Administration



FAA NAVAIDS viewed in Google “EON”



11 Regional Workshop - AAL
October 19-20, 2011

Federal Aviation
Administration



Additional Airports GIS Happenings (beyond FY-2011)

- **AC 150/5300-19**
 - Draft issued, comments received, in re-write
- **AC 150/5300-16B**
 - Additions/Changes
- **AC 150/5300-17C**
 - Published 9/30/2011
- **AC 150/5300-18C**
 - Incorporate lessons learned
 - Features/Attributes – Modifications, clarifications and Additions
- **Airports GIS/General**
 - Airport-Centric, Data-Driven
- **Electronic ALP**
- **On-Airport Change - Review Coordination “NRA”**



12 Regional Workshop - AAL
October 19-20, 2011

Federal Aviation
Administration



Gil Neumann
Senior Airport Planner | APP 400
gil.neumann@faa.gov
Office: 202.267.5840

G. Thomas Wade, P.E.
Senior Planner | ASW 610
thomas.wade@faa.gov
Office: 817.222.5613



13 Regional Workshop - AAL
October 19-20, 2011

