

Summary Statistics

Table 1. Crude Oil Prices
(Dollars per Barrel)

Year Month	Domestic First Purchase Prices	Average F.O.B. ^a Cost of Crude Oil Imports ^b	Average Landed Cost of Crude Oil Imports ^b	Refiner Acquisition Cost of Crude Oil		
				Domestic	Imported	Composite
1983	26.19	27.81	28.93	28.87	29.30	28.99
1984	25.88	27.60	28.54	28.53	28.88	28.63
1985	24.09	25.84	26.67	26.66	26.99	26.75
1986	12.51	12.52	13.49	14.82	14.00	14.55
1987	15.40	16.69	17.65	17.76	18.13	17.90
1988	12.58	13.25	14.08	14.74	14.56	14.67
1989	15.86	16.89	17.68	17.87	18.08	17.97
1990	20.03	20.37	21.13	22.59	21.76	22.22
1991	16.54	16.89	18.02	19.33	18.70	19.06
1992	15.99	16.77	17.75	18.63	18.20	18.43
1993	14.25	14.71	15.72	16.67	16.14	16.41
1994	13.19	14.18	15.18	15.67	15.51	15.59
1995	14.62	15.69	16.78	17.33	17.14	17.23
1996	18.46	19.32	20.31	20.77	20.64	20.71
1997	17.23	16.94	18.11	19.61	18.53	19.04
1998	10.87	10.76	11.84	13.18	12.04	12.52
1999	15.56	16.47	17.23	17.90	17.26	17.51
2000	26.72	26.27	27.53	29.11	27.70	28.26
2001	21.84	20.46	21.82	24.33	22.00	22.95
2002	22.51	22.63	23.91	24.65	23.71	24.10
2003	27.56	25.86	27.69	29.82	27.71	28.53
2004	36.77	33.75	36.07	38.97	35.90	36.98
2005	50.28	47.60	49.29	52.94	48.86	50.24
2006	59.69	57.03	59.11	62.62	59.02	60.24
2007						
January	49.32	48.11	50.53	53.10	49.57	50.77
February	52.94	51.97	54.04	55.72	53.77	54.45
March	54.95	55.46	57.42	57.86	56.31	56.84
April	58.20	59.53	60.99	61.13	60.45	60.68
May	58.90	60.72	62.92	62.04	61.55	61.71
June	62.35	64.38	66.26	64.95	65.24	65.14
July	69.23	69.30	70.51	72.08	70.75	71.24
August	67.77	66.69	69.07	71.57	68.28	69.46
September	73.27	72.21	73.92	75.84	72.34	73.54
October	79.32	78.51	79.45	82.20	78.61	79.87
November	87.16	83.75	84.89	89.25	85.53	86.78
December	85.28	82.85	84.28	88.98	83.21	85.29
2007	66.52	66.36	67.97	69.65	67.04	67.94
2008						
January	87.06	83.49	86.65	89.57	84.82	86.48
February	89.41	87.84	90.71	92.23	87.41	89.09
March	98.44	96.32	99.94	99.87	96.96	97.96
April	106.64	104.04	108.40	108.54	104.72	106.09
May	118.55	115.02	119.40	119.75	116.55	117.64
June	127.47	123.34	125.65	129.45	126.22	127.32
July	128.08	122.12	124.20	131.47	127.77	129.03
August	112.83	108.10	109.64	118.42	111.19	113.74
September	98.50	90.85	91.83	103.73	96.38	98.91
October	73.18	63.09	65.40	81.03	70.84	74.22
November	53.67	44.95	46.96	61.65	49.10	53.33
December	36.80	34.23	36.86	41.42	35.59	37.67
2008	94.04	90.32	93.33	98.47	92.77	94.74
2009						
January	35.00	36.87	38.74	38.67	36.84	37.45
February	34.14	38.08	40.27	37.51	38.56	38.15
March	42.45	44.34	46.74	44.92	45.96	45.57
April	45.19	47.67	51.43	47.52	49.58	48.78
May	52.67	55.61	58.27	54.58	56.77	55.96
June	63.09	64.82	65.89	64.65	66.37	65.72
July	60.44	62.32	64.78	63.79	63.46	63.58
August	65.28	67.47	68.53	67.81	68.09	67.99
September	65.28	65.41	68.50	67.87	67.65	67.74
October	69.82	70.45	72.58	72.09	72.06	72.08
November	71.99	73.16	74.41	74.60	74.40	74.48
December	70.42	71.24	73.50	73.35	72.67	72.95
2009	56.35	57.78	60.23	59.49	59.17	59.29

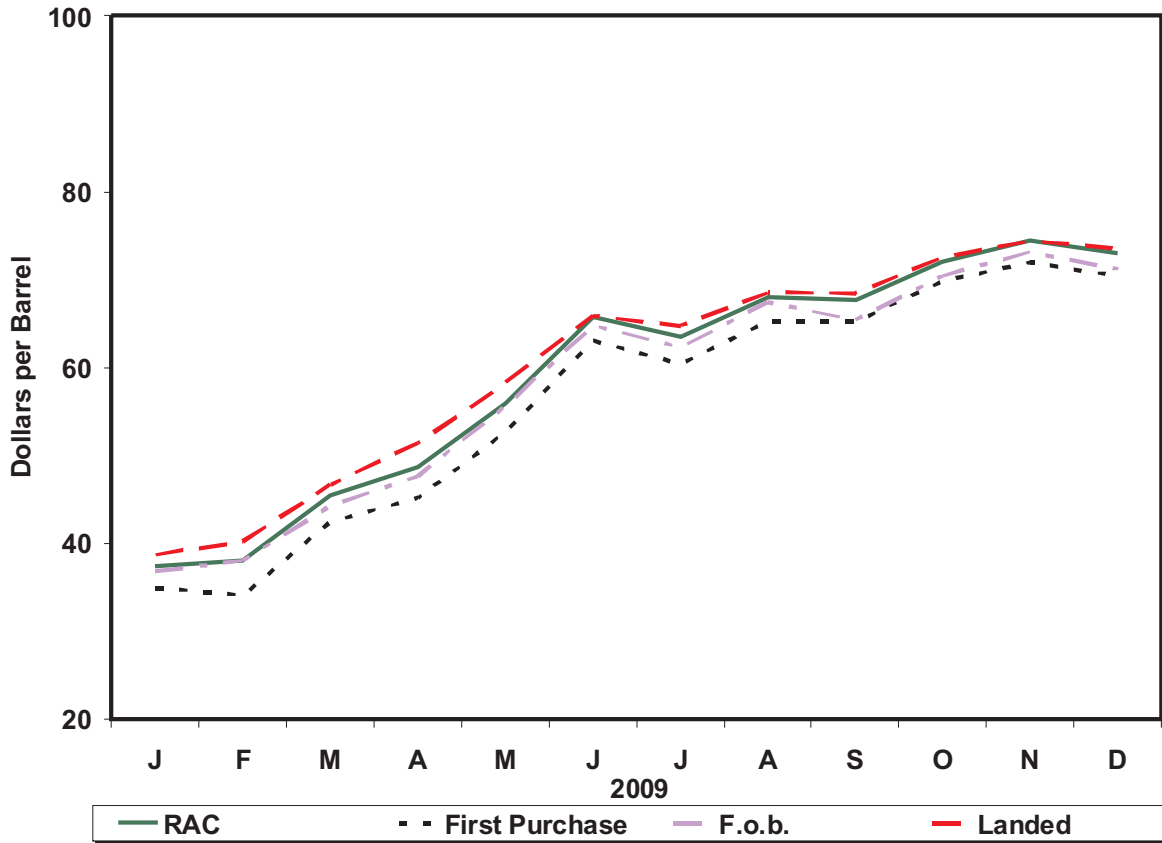
^a Free on Board. See Glossary.

^b Values through 1980 reflect the month of reporting; values since then reflect the month of acquisition, which can be the month of loading, the month of landing, or sometime between those events. Prices for crude oil can be determined at a time other than the acquisition date. See the Explanatory Notes section for additional detail.

Note: In January 2004, new crude streams were added and selected crude streams were discontinued for California, Gulf Coast, Oklahoma, and Texas.

Sources: Domestic first purchase prices -- See "Source" from Table 18. Crude oil imports costs -- See "Sources" from Table 24. Refiner acquisition costs -- Energy Information Administration, Form EIA-14, "Refiners' Monthly Cost Report," January 1983 to present.

Figure 1. Crude Oil Prices



Sources: Energy Information Administration, Form EIA-182, "Domestic Crude Oil First Purchase Report"; Form EIA-856, "Monthly Foreign Crude Oil Acquisition Report"; and Form EIA-14, "Refiners' Monthly Cost Report."

Table 1A. Refiner Acquisition Cost of Crude Oil by PAD Districts

(Dollars per Barrel)

Year Month	U.S.			PAD District 1			PAD District 2		
	Domestic	Imported	Composite	Domestic	Imported	Composite	Domestic	Imported	Composite
2004	38.97	35.90	36.98	40.75	38.29	38.34	40.80	35.63	38.38
2005	52.94	48.86	50.24	56.89	53.29	53.35	54.57	46.11	50.75
2006	62.62	59.02	60.24	66.92	63.53	63.60	63.66	55.19	59.70
2007									
January	53.10	49.57	50.77	W	54.21	54.27	53.34	46.35	49.99
February	55.72	53.77	54.45	W	57.68	57.71	57.35	52.68	55.03
March	57.86	56.31	56.84	W	61.38	61.36	60.31	55.23	57.68
April	61.13	60.45	60.68	W	65.70	65.66	62.80	56.44	59.58
May	62.04	61.55	61.71	63.62	67.30	67.23	63.00	57.79	60.67
June	64.95	65.24	65.14	66.31	71.50	71.38	66.31	58.74	63.04
July	72.08	70.75	71.24	68.98	76.59	76.42	73.85	64.87	69.98
August	71.57	68.28	69.46	71.80	70.89	70.91	72.31	65.60	69.23
September	75.84	72.34	73.54	76.58	78.22	78.19	78.06	66.74	73.02
October	82.20	78.61	79.87	81.99	83.63	83.60	84.64	71.66	78.88
November	89.25	85.53	86.78	87.86	89.85	89.81	92.76	81.96	87.25
December	88.98	83.21	85.29	88.79	89.60	89.59	90.84	71.29	81.59
2007	69.65	67.04	67.94	70.62	72.48	72.44	71.10	62.17	66.90
2008									
January	89.57	84.82	86.48	90.78	90.75	90.75	92.12	79.17	85.52
February	92.23	87.41	89.09	90.95	91.34	91.33	94.58	81.68	87.97
March	99.87	96.96	97.96	99.87	97.16	97.23	100.80	96.90	98.92
April	108.54	104.72	106.09	104.60	111.43	111.26	110.76	104.18	107.67
May	119.75	116.55	117.64	119.33	123.14	123.06	122.36	112.93	118.07
June	129.45	126.22	127.32	127.11	135.23	135.03	131.08	119.88	125.93
July	131.47	127.77	129.03	131.37	131.35	131.35	133.21	124.24	129.17
August	118.42	111.19	113.74	120.11	113.89	114.04	120.95	110.35	116.31
September	103.73	96.38	98.91	107.40	96.09	96.32	106.75	97.40	102.47
October	81.03	70.84	74.22	85.13	71.15	71.42	82.57	71.81	76.94
November	61.65	49.10	53.33	66.87	52.28	52.62	61.65	50.75	55.87
December	41.42	35.59	37.67	55.50	41.80	42.14	42.55	32.75	37.61
2008	98.47	92.77	94.74	100.30	96.90	96.97	100.98	88.45	94.93
2009									
January	38.67	36.84	37.45	49.40	41.28	41.46	39.90	34.01	37.02
February	37.51	38.56	38.15	42.78	41.07	41.10	37.36	35.36	36.46
March	44.92	45.96	45.57	W	47.88	47.82	43.66	44.13	43.87
April	47.52	49.58	48.78	47.30	51.81	51.68	48.25	47.46	47.91
May	54.58	56.77	55.96	53.53	58.62	58.49	55.44	54.82	55.17
June	64.65	66.37	65.72	64.07	67.14	67.08	65.67	64.26	65.04
July	63.79	63.46	63.58	62.46	67.05	66.94	63.85	61.33	62.66
August	67.81	68.09	67.99	66.98	68.87	68.83	68.47	64.68	66.74
September	67.87	67.65	67.74	66.57	69.60	69.53	68.78	65.86	67.51
October	72.09	72.06	72.08	70.30	74.16	74.06	73.19	69.89	71.78
November	74.60	74.40	74.48	73.15	75.02	74.97	75.83	71.25	73.77
December	73.35	72.67	72.95	71.54	78.42	78.19	74.46	69.00	71.91
2009	59.49	59.17	59.29	59.64	61.68	61.63	60.00	57.00	58.64

See footnotes at end of table.

Table 1A. Refiner Acquisition Cost of Crude Oil by PAD Districts

(Dollars per Barrel) — Continued

Year Month	PAD District 3			PAD District 4			PAD District 5		
	Domestic	Imported	Composite	Domestic	Imported	Composite	Domestic	Imported	Composite
2004	39.28	34.79	35.87	39.98	35.93	37.81	36.81	38.20	37.30
2005	53.17	47.77	48.99	53.50	48.54	50.89	50.61	50.77	50.67
2006	63.17	58.34	59.54	60.80	56.17	58.45	60.90	61.44	61.15
2007									
January	54.68	48.87	50.33	50.23	47.84	48.95	51.32	50.27	50.89
February	56.67	52.92	53.92	52.89	51.92	52.41	53.13	54.28	53.58
March	57.94	55.26	55.94	55.14	52.99	54.10	55.50	56.58	55.95
April	61.87	60.11	60.59	58.22	55.87	57.11	58.82	60.64	59.66
May	62.61	60.55	61.03	58.85	57.98	58.45	60.81	61.84	61.31
June	65.08	64.81	64.88	61.93	58.57	60.42	63.84	66.63	65.12
July	72.72	70.44	71.08	68.18	64.13	66.29	69.88	72.14	70.86
August	72.52	67.41	68.91	66.87	66.02	66.48	70.24	71.10	70.63
September	76.30	71.46	72.74	71.43	65.88	68.66	73.52	75.67	74.55
October	82.30	78.61	79.68	77.13	67.44	72.22	80.10	81.75	80.89
November	89.96	84.69	86.07	84.09	77.66	81.20	85.64	88.54	86.95
December	90.04	83.84	85.69	81.77	66.72	75.59	87.00	87.77	87.32
2007	70.58	66.34	67.48	65.79	60.81	63.43	67.47	69.42	68.34
2008									
January	90.17	84.32	85.96	84.19	79.91	82.06	87.02	87.20	87.10
February	93.25	87.60	89.24	86.26	80.99	83.80	89.63	89.11	89.39
March	100.83	96.55	97.68	97.04	94.70	95.88	98.23	97.75	98.01
April	108.01	102.12	103.85	105.47	102.53	104.18	107.56	107.58	107.57
May	119.59	114.72	115.95	116.43	110.78	113.94	117.63	121.25	119.33
June	129.54	125.28	126.36	126.82	116.67	122.34	127.92	129.17	128.53
July	131.99	127.27	128.51	126.32	121.57	123.92	129.49	129.58	129.53
August	121.36	110.19	113.11	108.25	110.56	109.34	113.22	112.54	112.90
September	105.21	95.18	97.53	95.42	92.91	94.23	99.95	98.75	99.38
October	85.42	69.36	73.41	68.26	68.87	68.56	76.70	73.36	75.14
November	69.75	46.80	52.48	49.09	46.92	48.09	54.12	52.34	53.34
December	43.66	34.95	37.29	32.74	30.59	31.80	39.11	34.36	37.17
2008	100.39	91.86	94.11	91.49	88.56	90.12	94.53	96.30	95.35
2009									
January	39.87	36.49	37.29	34.65	32.89	33.94	36.44	36.53	36.48
February	38.24	39.08	38.81	33.82	35.37	34.45	37.32	37.56	37.43
March	45.08	46.12	45.80	41.71	44.05	42.76	46.75	46.39	46.59
April	48.02	49.62	49.14	45.58	47.14	46.20	46.29	50.52	48.03
May	54.09	56.93	56.13	54.40	53.46	54.00	54.25	57.88	55.84
June	63.83	66.31	65.53	63.54	63.97	63.73	64.92	69.21	66.76
July	65.35	63.28	63.94	59.27	60.98	60.06	62.04	64.67	63.25
August	68.52	68.47	68.48	65.12	64.76	64.97	66.28	70.11	68.12
September	69.30	67.54	68.16	64.54	64.45	64.50	65.00	68.64	66.59
October	72.81	71.96	72.24	70.36	69.67	70.06	69.90	73.85	71.63
November	74.92	74.80	74.84	72.59	70.44	71.71	73.07	76.81	74.60
December	74.62	72.51	73.23	69.61	67.27	68.61	70.70	74.65	72.15
2009	60.61	59.21	59.64	56.30	56.53	56.39	57.79	60.07	58.78

W = Withheld to avoid disclosure of individual company data.

Notes: U.S. is defined as the 50 states, the District of Columbia, Puerto Rico, the Virgin Islands, and all American territories and possessions. Values reflect the PAD District in which the crude oil is intended to be refined.

Source: Form EIA-14, "Refiners' Monthly Cost Report," January 2004 to present.

Table 2. U.S. Refiner Prices of Petroleum Products to End Users
(Cents per Gallon Excluding Taxes)

Year Month	Motor Gasoline	Aviation Gasoline	Kerosene- Type Jet Fuel	Propane (Consumer Grade)	Kerosene	No. 1 Distillate	No. 2 Distillate			No. 4 Fuel ^a	Residual Fuel Oil
							No. 2 Diesel Fuel	No. 2 Fuel Oil	Average		
1983	95.4	125.5	87.8	70.9	96.1	96.2	82.6	91.6	83.9	76.6	65.1
1984	90.7	123.4	84.2	73.7	103.6	92.7	82.3	91.6	83.7	79.6	68.7
1985	91.2	120.1	79.6	71.7	103.0	88.0	78.9	84.9	79.9	77.3	61.0
1986	62.4	101.1	52.9	74.5	79.0	62.0	47.8	56.0	49.1	48.9	34.3
1987	66.9	90.7	54.3	70.1	77.0	60.4	55.1	58.1	55.6	51.3	42.3
1988	67.3	89.1	51.3	71.4	73.8	56.4	50.0	54.4	50.7	46.1	33.4
1989	75.6	99.5	59.2	61.5	70.9	66.1	58.5	58.7	58.5	51.2	38.5
1990	88.3	112.0	76.6	74.5	92.3	81.9	72.5	73.4	72.6	62.2	44.4
1991	79.7	104.7	65.2	73.0	83.8	74.0	64.8	66.5	65.0	58.0	34.0
1992	78.7	102.7	61.0	64.3	78.8	66.6	61.9	62.7	62.0	52.6	33.6
1993	75.9	99.0	58.0	67.3	75.4	66.6	60.2	60.2	60.2	50.1	33.7
1994	73.8	95.7	53.4	53.0	66.0	64.0	55.4	57.2	55.6	50.1	35.2
1995	76.5	100.5	54.0	49.2	58.9	62.0	56.0	56.2	56.0	50.5	39.2
1996	84.7	111.6	65.1	60.5	74.0	72.6	68.1	67.3	68.0	60.3	45.5
1997	83.9	112.8	61.3	55.2	74.5	68.9	64.2	63.6	64.2	56.5	42.3
1998	67.3	97.5	45.2	40.5	50.1	55.1	49.4	48.2	49.2	42.8	30.5
1999	78.1	105.9	54.3	45.8	60.5	62.1	58.4	55.8	58.0	47.4	37.4
2000	110.6	130.6	89.9	60.3	112.3	98.8	93.5	92.7	93.4	76.9	60.2
2001	103.2	132.3	77.5	50.6	104.5	90.2	84.2	82.9	84.0	67.9	53.1
2002	94.7	128.8	72.1	41.9	99.0	82.8	76.2	73.7	75.9	65.7	56.9
2003	115.6	149.3	87.2	57.7	122.4	101.7	94.4	93.3	94.2	85.6	69.8
2004	143.5	181.9	120.7	83.9	116.0	126.2	124.3	117.3	123.5	101.7	73.9
2005	182.9	223.1	173.5	108.9	195.7	183.2	178.6	170.5	177.7	W	104.8
2006	212.8	268.2	199.8	135.8	224.4	213.7	209.6	198.2	209.1	W	121.8
2007											
January	179.1	217.9	175.8	NA	194.4	201.3	183.0	189.4	183.3	W	105.8
February	184.2	228.5	179.0	155.3	NA	198.7	189.8	203.1	190.5	W	112.6
March	213.8	262.7	187.2	NA	232.5	208.2	205.6	205.0	205.5	W	115.0
April	240.5	296.9	203.9	127.2	236.1	220.7	220.2	210.3	219.9	W	120.9
May	266.9	309.6	210.5	129.8	W	218.5	218.5	208.3	218.2	W	130.0
June	256.9	297.8	213.2	130.9	W	223.8	222.6	210.2	222.3	W	135.7
July	248.8	305.3	218.5	127.8	236.2	233.2	230.1	217.6	229.9	W	141.5
August	232.0	282.3	216.0	138.9	246.7	232.2	228.2	215.0	227.9	189.7	146.2
September	233.7	290.0	225.0	142.8	267.3	241.5	238.1	231.6	238.0	W	145.0
October	235.0	285.5	237.7	155.5	280.1	259.1	249.9	NA	250.0	W	157.3
November	261.4	306.7	268.4	180.6	319.7	279.6	278.2	277.3	278.1	W	180.3
December	255.2	297.5	268.5	NA	330.3	279.9	269.7	277.0	270.1	W	184.2
2007	234.5	284.9	216.5	148.9	226.3	228.6	226.7	224.1	226.6	W	137.4
2008											
January	257.1	298.7	268.5	220.6	338.1	283.6	269.2	279.0	269.7	W	185.9
February	256.6	295.4	269.3	NA	340.4	290.3	280.5	288.8	281.0	W	180.2
March	278.3	329.6	312.0	186.5	359.2	321.9	325.2	323.2	325.1	W	193.4
April	298.4	335.8	333.4	NA	377.4	347.5	345.1	340.5	344.9	W	198.3
May	331.6	361.5	366.1	185.3	395.0	376.8	380.8	375.3	380.6	W	213.2
June	358.0	396.5	393.3	192.8	415.9	413.3	400.4	391.4	400.1	W	243.4
July	356.8	392.9	400.8	205.5	439.3	418.9	402.1	393.9	401.9	W	272.4
August	327.9	379.2	342.5	190.6	405.5	382.3	357.6	339.9	357.1	W	269.4
September	320.7	383.7	326.6	201.5	401.3	352.7	332.0	327.5	331.8	W	241.2
October	253.7	297.5	260.3	176.3	299.3	288.3	278.1	269.0	277.7	W	185.9
November	161.7	223.0	198.8	165.2	308.5	245.9	213.9	229.3	214.7	W	122.5
December	121.9	181.4	151.8	166.4	282.3	200.2	169.0	192.6	170.9	W	102.1
2008	277.5	327.3	305.2	189.2	328.3	298.3	315.0	298.6	314.3	W	196.4
2009											
January	135.8	185.7	148.3	186.1	262.6	190.2	163.0	202.6	166.9	W	104.9
February	146.8	197.4	136.0	150.5	262.7	NA	149.5	187.9	152.6	W	106.8
March	150.3	197.7	128.1	116.6	256.5	186.4	145.0	177.2	147.1	W	103.0
April	160.1	215.0	145.8	106.5	254.0	197.0	158.9	176.5	159.7	W	106.6
May	185.6	242.3	148.6	88.9	249.7	187.9	164.0	169.7	164.3	W	123.4
June	218.7	270.7	181.8	100.8	249.0	213.2	194.5	193.9	194.5	W	144.7
July	206.7	260.7	177.4	89.1	246.2	209.7	189.7	187.1	189.6	W	140.4
August	215.7	276.4	192.2	102.9	254.5	234.9	203.2	204.1	203.2	W	153.6
September	208.6	268.4	183.4	107.5	NA	235.0	198.0	197.2	198.0	W	154.0
October	210.4	269.3	193.0	122.9	273.8	244.6	208.2	216.3	208.5	W	155.2
November	217.3	284.5	206.4	132.3	287.5	246.6	215.5	222.7	215.9	W	164.2
December	214.4	279.9	201.6	151.7	289.4	245.6	211.7	219.7	212.2	W	167.4
2009	188.8	244.2	170.4	122.0	267.5	214.1	183.4	196.2	184.0	W	134.1

NA = Not available.

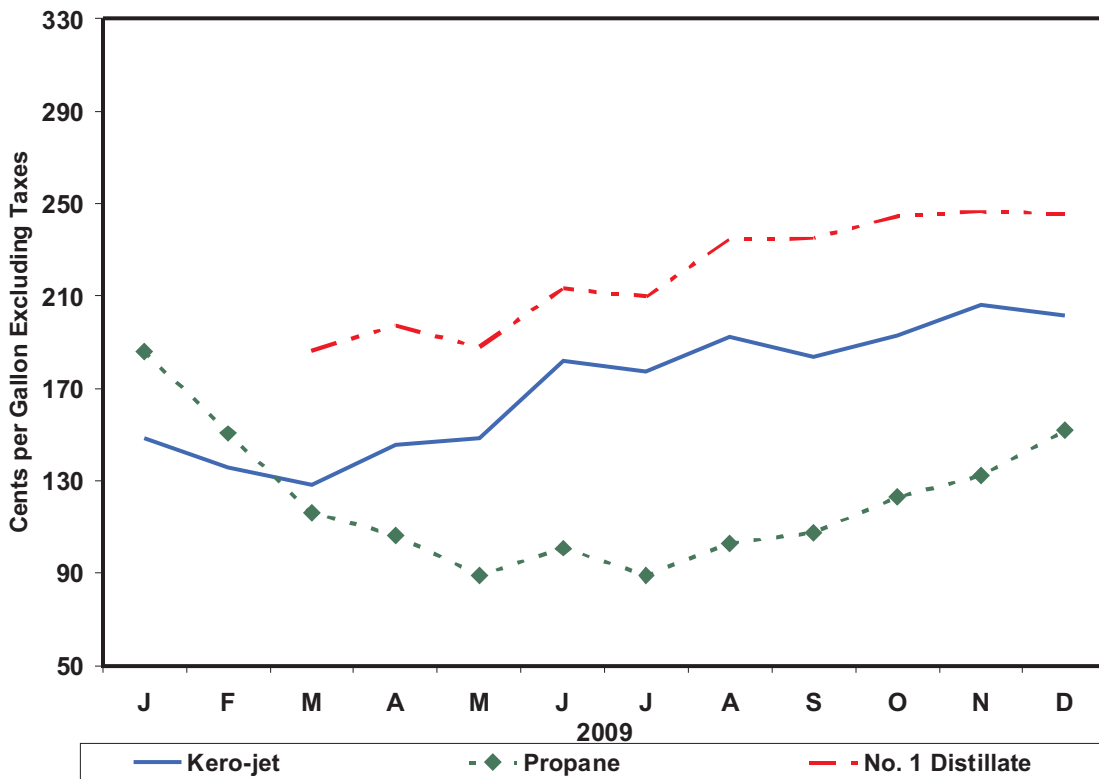
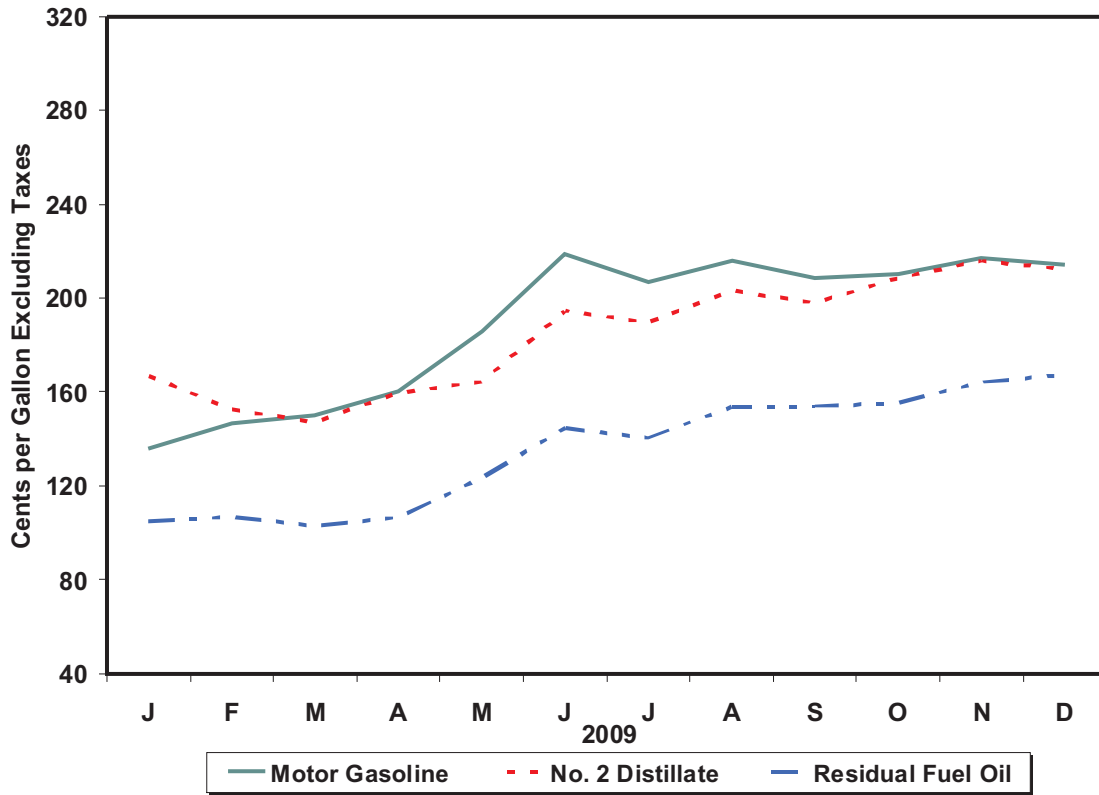
W = Withheld to avoid disclosure of individual company data.

^a Includes No. 4 fuel oil and No. 4 diesel fuel.

Note: Motor gasoline averages and totals prior to October 1993 include leaded gasoline.

Sources: Energy Information Administration Form EIA-782A, "Refiners'/Gas Plant Operators' Monthly Petroleum Product Sales Report," January 1983 forward; Form EIA-460, "Petroleum Industry Monthly Report for Product Prices," source for backcast estimates prior to January 1983.

Figure 2. U.S. Refiner Retail Petroleum Product Prices



Source: Energy Information Administration, Form EIA-782A, "Refiners' / Gas Plant Operators' Monthly Petroleum Product Sales Report."

Table 3. U.S. Refiner Volumes of Petroleum Products to End Users

(Million Gallons per Day)

Year Month	Motor Gasoline	Aviation Gasoline	Kerosene-Type Jet Fuel	Propane (Consumer Grade)	Kerosene	No. 1 Distillate	No. 2 Distillate			No. 4 Fuel ^a	Residual Fuel Oil
							No. 2 Diesel Fuel	No. 2 Fuel Oil	Total		
1983	51.1	0.4	30.8	3.1	0.2	0.5	23.3	3.7	27.0	0.7	28.3
1984	57.6	0.3	32.9	3.3	0.3	0.5	26.3	4.9	31.2	0.7	32.9
1985	57.5	0.3	34.6	3.7	0.3	0.5	25.0	5.0	29.9	0.5	25.2
1986	61.2	0.3	35.1	3.4	0.3	0.4	24.4	4.4	28.8	0.7	31.6
1987	61.0	0.2	36.8	3.8	0.3	0.4	24.1	4.5	28.5	0.8	29.0
1988	61.0	0.2	38.2	4.3	0.3	0.4	24.5	4.6	29.1	1.1	30.2
1989	61.2	0.2	40.1	2.8	0.3	0.5	24.3	4.5	28.8	0.9	30.4
1990	60.3	0.2	39.9	2.7	0.2	0.5	22.2	3.6	25.9	0.8	25.9
1991	61.2	0.2	38.5	3.1	0.2	0.5	21.1	3.2	24.4	0.7	24.0
1992	59.0	0.2	39.8	3.8	0.2	0.5	21.5	3.1	24.6	0.6	22.4
1993	57.2	0.2	41.7	3.5	0.2	0.4	20.8	2.9	23.8	0.6	17.2
1994	55.0	0.2	45.2	2.2	0.4	0.4	21.3	3.4	24.6	0.8	13.5
1995	55.9	0.2	45.7	3.2	0.6	0.3	21.6	3.3	24.9	0.5	11.6
1996	57.5	0.2	48.7	3.1	0.4	0.3	21.9	3.1	25.0	0.4	12.9
1997	61.1	0.2	49.7	3.2	0.3	0.4	22.0	3.0	25.0	0.3	13.4
1998	63.3	0.2	48.9	3.1	0.4	0.4	21.1	3.2	24.3	0.3	14.4
1999	62.0	0.1	47.0	3.6	0.2	0.3	21.1	3.0	24.1	0.3	13.9
2000	60.9	0.2	49.3	2.9	0.2	0.3	22.6	2.8	25.4	0.3	13.1
2001	62.0	0.1	49.7	3.6	0.2	0.3	22.9	3.0	26.0	0.4	14.8
2002	63.6	0.1	49.1	2.6	0.1	0.3	19.6	3.0	22.6	0.4	10.4
2003	63.8	0.1	44.0	2.5	0.1	0.3	16.7	2.7	19.5	0.3	10.7
2004	58.4	0.1	46.4	2.7	0.5	0.2	16.9	2.4	19.3	0.3	10.2
2005	59.0	0.1	45.2	3.2	0.1	0.3	17.0	2.1	19.1	W	10.4
2006	60.0	0.1	42.1	2.7	0.1	0.2	24.2	1.2	25.4	W	10.4
2007											
January	54.7	0.1	39.4	3.3	0.2	0.3	23.5	1.2	24.7	W	12.2
February	57.0	0.1	40.5	4.3	0.2	0.3	25.8	1.4	27.2	W	12.8
March	57.3	0.1	40.4	3.5	0.1	0.2	24.3	1.1	25.4	W	11.5
April	57.4	0.1	40.9	4.0	0.1	0.2	25.8	0.9	26.6	W	13.0
May	58.7	0.1	40.2	2.8	W	0.1	25.5	0.7	26.2	W	11.0
June	60.9	0.1	42.9	2.3	W	0.1	23.6	0.5	24.1	W	10.3
July	58.8	0.1	42.2	3.4	NA	0.1	22.3	0.4	22.7	W	11.2
August	60.2	0.1	42.5	2.2	NA	0.1	23.9	0.5	24.4	0.2	9.7
September	57.9	0.1	38.3	2.7	NA	0.1	22.7	0.4	23.1	W	10.7
October	57.8	0.1	39.0	3.4	NA	0.1	23.5	0.4	23.9	W	10.2
November	56.6	0.1	38.2	3.5	0.1	0.2	21.7	1.0	22.7	W	9.6
December	54.7	0.1	37.1	3.9	0.1	0.2	20.1	1.1	21.2	W	9.1
2007	57.7	0.1	40.1	3.3	0.1	0.2	23.6	0.8	24.3	W	10.9
2008											
January	54.0	0.1	39.0	2.9	0.1	0.2	20.3	1.3	21.6	W	10.2
February	56.2	0.1	38.8	3.5	0.1	0.2	20.9	1.3	22.2	W	9.8
March	55.5	0.1	39.4	3.1	0.1	0.1	20.5	1.0	21.6	W	7.8
April	56.3	0.2	39.6	2.7	NA	0.1	21.6	0.9	22.5	W	9.0
May	56.4	0.1	39.5	2.9	NA	0.1	20.1	0.8	20.8	W	8.0
June	55.9	0.2	43.2	2.8	NA	NA	20.4	0.7	21.1	W	7.8
July	54.8	0.2	43.6	2.3	NA	NA	20.0	0.7	20.7	W	7.6
August	55.6	0.2	43.7	2.3	NA	NA	18.7	0.6	19.3	W	7.4
September	53.4	0.1	38.8	2.0	NA	0.1	20.1	0.7	20.8	W	7.3
October	55.2	0.2	38.6	2.4	0.1	0.1	19.9	0.8	20.7	W	7.4
November	54.1	0.1	37.4	2.3	0.1	0.1	18.3	1.0	19.3	W	8.1
December	53.9	0.1	37.3	3.0	0.1	0.2	17.6	1.6	19.2	W	10.6
2008	55.1	0.1	39.9	2.7	NA	0.1	19.9	0.9	20.8	W	8.4
2009											
January	51.1	0.1	36.5	3.0	0.1	0.2	17.3	1.9	19.2	W	12.5
February	51.0	0.2	37.1	3.3	0.1	0.2	17.7	1.5	19.2	W	9.8
March	51.3	0.2	37.8	3.5	0.1	0.2	17.0	1.2	18.2	W	8.4
April	51.2	0.2	38.5	2.3	NA	0.1	16.8	0.8	17.6	W	7.4
May	51.0	0.2	38.1	3.1	NA	NA	16.1	0.7	16.8	W	7.3
June	50.4	0.2	40.9	3.2	NA	NA	17.4	0.6	18.0	W	7.8
July	49.7	0.2	39.4	3.9	NA	NA	16.4	0.5	16.9	W	8.4
August	50.0	0.2	38.8	3.5	NA	NA	17.4	0.5	17.8	W	7.7
September	48.7	0.2	38.0	4.4	NA	NA	17.4	0.5	17.9	W	7.8
October	48.5	0.1	36.1	4.1	NA	0.1	16.5	0.6	17.0	W	7.9
November	47.5	0.1	37.1	4.5	NA	0.1	16.2	0.8	17.0	W	8.2
December	47.4	0.1	37.2	5.3	0.1	0.2	16.5	1.1	17.6	W	9.3
2009	49.8	0.2	38.0	3.7	NA	0.1	16.9	0.9	17.8	W	8.5

NA = Not available.

W = Withheld to avoid disclosure of individual company data.

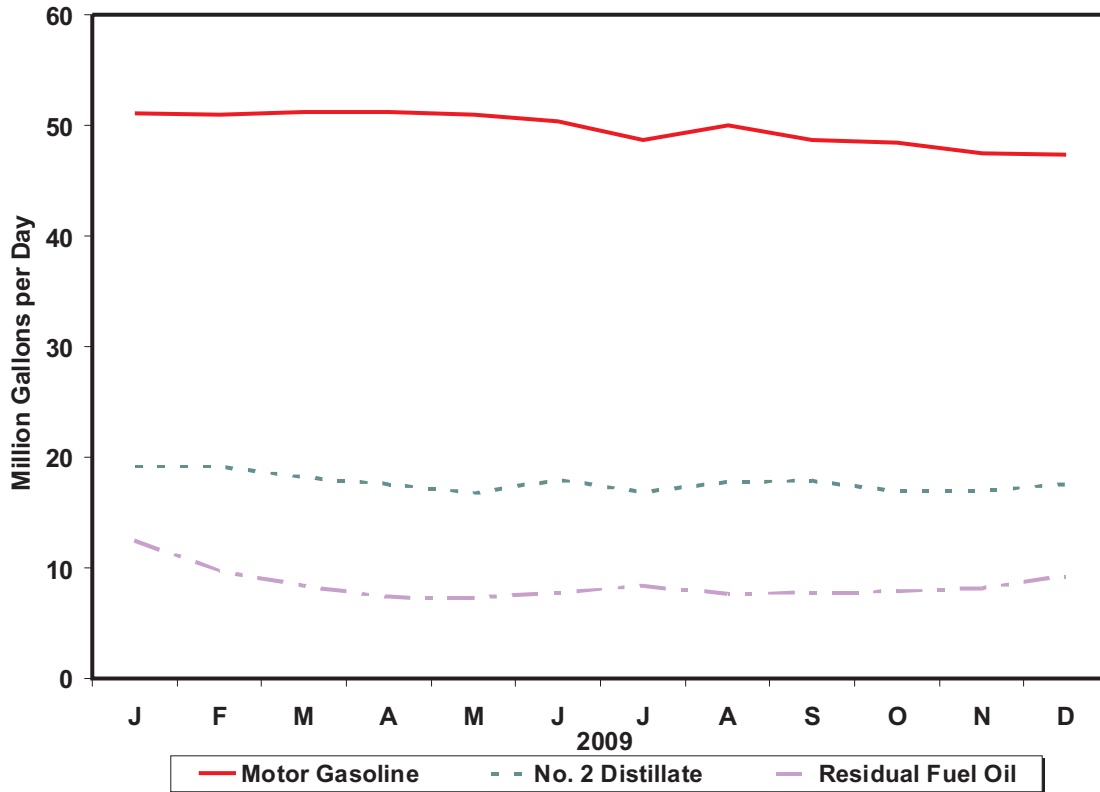
^a Includes No. 4 fuel oil and No. 4 diesel fuel.

Note: Motor gasoline averages and totals prior to October 1993 include leaded gasoline.

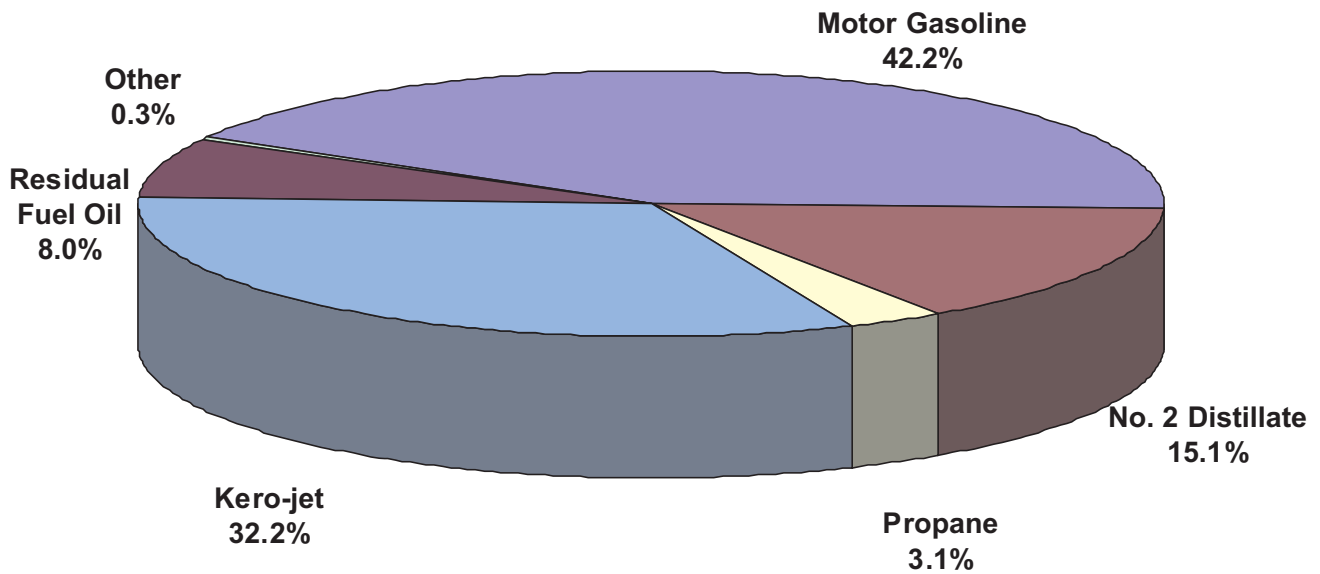
Note: Totals may not equal the sum of the components due to rounding.

Source: Energy Information Administration Form EIA-782A, "Refiners/Gas Plant Operators' Monthly Petroleum Product Sales Report."

Figure 3. U.S. Refiner Retail Petroleum Product Volumes



Percentages of Refiner Retail Volumes



Source: Energy Information Administration, Form EIA-782A, "Refiners' /Gas Plant Operators' Monthly Petroleum Product Sales Report."

Table 4. U.S. Refiner Prices of Petroleum Products for Resale
(Cents per Gallon Excluding Taxes)

Year Month	Motor Gasoline	Aviation Gasoline	Kerosene-Type Jet Fuel	Propane (Consumer Grade)	Kerosene	No. 1 Distillate	No. 2 Distillate			No. 4 Fuel ^a	Residual Fuel Oil
							No. 2 Diesel Fuel	No. 2 Fuel Oil	Average		
1983	88.2	117.8	85.4	48.4	89.2	89.6	80.8	81.5	81.2	72.6	60.9
1984	83.2	116.5	83.0	45.0	91.6	89.2	80.3	82.1	81.3	70.7	65.4
1985	83.5	113.0	79.4	39.8	87.4	86.3	77.2	77.6	77.4	67.2	57.7
1986	53.1	91.2	49.5	29.0	60.6	57.9	45.2	48.6	47.0	40.9	30.5
1987	58.9	85.9	53.8	25.2	59.2	59.9	53.4	52.7	53.1	46.2	38.5
1988	57.7	85.0	49.5	24.0	54.9	54.9	47.3	47.3	47.3	42.5	30.0
1989	65.4	95.0	58.3	24.7	66.9	66.8	56.7	56.5	56.6	48.0	36.0
1990	78.6	106.3	77.3	38.6	83.9	83.8	69.4	69.7	69.5	59.0	41.3
1991	69.9	100.1	65.0	34.9	72.3	73.0	61.5	62.2	61.8	55.6	31.4
1992	67.7	99.1	60.5	32.8	63.2	65.2	59.1	57.9	58.5	49.5	30.8
1993	62.6	96.5	57.7	35.1	60.4	64.6	57.0	54.4	55.9	48.8	29.3
1994	59.9	93.3	53.4	32.4	61.8	61.5	52.9	50.6	52.2	46.2	31.7
1995	62.6	97.5	53.9	34.4	58.0	62.5	53.8	51.1	53.0	46.3	36.3
1996	71.3	105.5	64.6	46.1	71.4	75.1	65.9	63.9	65.3	60.3	42.0
1997	70.0	106.5	61.3	41.6	65.3	72.3	60.6	59.0	60.2	55.1	38.7
1998	52.6	91.2	45.0	28.8	46.5	51.3	44.4	42.2	43.9	38.3	28.0
1999	64.5	100.7	53.3	34.2	55.0	63.4	54.6	49.3	53.6	43.0	35.4
2000	96.3	133.0	88.0	59.5	96.9	101.9	89.8	88.6	89.6	77.8	56.6
2001	88.6	125.6	76.3	54.0	82.1	88.3	78.4	75.6	77.9	69.7	47.6
2002	82.8	114.6	71.6	43.1	75.2	80.5	72.4	69.4	71.8	66.3	53.0
2003	100.2	128.8	87.1	60.7	95.5	103.3	88.3	88.1	88.2	79.3	66.1
2004	128.8	162.7	120.8	75.1	127.1	128.9	118.7	112.5	117.8	103.3	68.1
2005	167.0	207.6	172.3	93.3	175.7	180.1	173.7	162.3	172.0	137.7	97.1
2006	196.9	249.0	196.1	103.1	200.7	204.4	201.2	183.4	199.1	139.5	113.6
2007											
January	157.0	204.3	172.7	99.5	180.6	195.5	169.5	161.2	168.4	116.9	97.6
February	171.7	218.7	176.6	103.3	194.2	207.9	182.4	172.9	181.1	136.0	107.3
March	199.5	246.1	184.6	104.9	194.3	218.4	197.9	178.1	195.3	138.1	107.6
April	226.4	277.9	202.1	106.7	204.8	230.3	211.6	191.0	210.0	137.8	115.0
May	249.5	304.7	207.9	111.2	207.8	227.7	210.1	194.9	209.3	148.3	123.8
June	236.1	292.4	211.4	109.4	215.7	223.1	214.7	201.4	213.8	154.2	128.0
July	230.7	299.8	216.7	115.9	226.1	243.0	222.0	207.1	221.0	163.9	137.8
August	215.2	282.8	215.1	116.7	222.2	237.3	219.3	202.1	218.1	151.8	136.7
September	219.5	283.0	225.6	124.8	245.0	253.8	232.2	213.3	230.7	159.6	139.3
October	221.8	276.9	235.3	135.2	252.5	269.9	242.6	226.0	241.3	172.6	153.6
November	245.8	302.0	265.6	147.1	285.4	298.7	269.8	256.9	268.4	200.0	174.2
December	235.8	292.7	265.5	146.1	282.5	292.9	259.9	257.0	259.4	205.4	176.5
2007	218.2	275.8	217.1	119.4	224.9	243.0	220.3	207.2	219.0	155.1	135.0
2008											
January	239.5	296.9	266.5	151.9	283.2	281.2	258.0	256.4	257.8	201.6	176.4
February	243.6	300.7	267.4	146.9	284.2	291.3	273.8	260.7	271.7	198.4	171.4
March	264.0	326.3	310.6	149.5	328.1	332.1	315.8	297.7	313.7	220.2	176.9
April	286.1	346.8	331.5	157.1	354.3	354.1	335.6	319.5	334.2	241.5	188.0
May	317.2	375.1	364.2	167.5	376.7	395.3	371.2	353.6	370.0	268.6	204.2
June	341.6	401.8	391.2	176.1	397.3	400.1	385.9	376.1	385.2	W	227.4
July	334.7	394.6	397.8	183.3	398.0	392.2	387.6	380.2	387.1	W	263.6
August	307.8	373.7	339.3	166.7	345.6	343.0	333.8	328.7	333.5	W	248.6
September	300.0	370.5	327.8	156.5	336.5	321.9	316.0	300.3	314.9	W	217.9
October	214.9	279.0	256.9	124.2	268.1	267.6	251.4	240.0	250.6	W	159.2
November	139.3	214.0	197.4	100.5	228.8	223.9	195.5	194.7	195.5	W	100.4
December	106.1	179.9	147.0	91.6	171.5	176.6	146.9	157.9	148.4	W	87.6
2008	258.6	334.2	302.0	143.7	285.1	271.2	299.4	274.5	297.0	215.7	186.6
2009											
January	124.6	185.1	147.2	97.4	181.0	189.8	148.0	154.8	149.1	W	92.6
February	133.3	204.0	135.2	89.0	160.7	174.7	132.6	142.7	134.2	W	95.4
March	139.7	203.1	126.6	80.5	145.6	169.7	131.5	135.8	132.0	W	95.2
April	148.2	222.5	142.5	71.9	148.0	194.2	145.6	139.7	145.0	W	101.7
May	176.3	247.8	146.0	72.8	154.0	176.2	153.1	146.8	152.7	W	119.5
June	202.2	274.3	178.0	83.8	184.9	205.9	182.8	174.4	182.3	W	138.1
July	186.7	254.8	175.9	76.0	177.3	199.8	174.5	165.8	173.8	W	140.5
August	202.6	275.9	189.4	83.7	195.1	212.0	193.7	180.4	192.6	W	157.2
September	191.5	259.2	182.2	92.3	185.7	215.8	184.8	177.4	184.1	W	154.9
October	197.5	261.1	191.7	100.4	205.3	232.1	197.8	191.8	197.3	W	156.0
November	203.9	270.1	206.0	108.8	206.7	234.8	203.7	200.4	203.4	193.3	171.1
December	199.9	265.5	201.2	117.8	214.8	225.7	199.7	198.9	199.6	194.9	168.5
2009	176.7	248.0	171.9	92.1	184.4	205.0	171.3	165.7	170.7	156.1	134.2

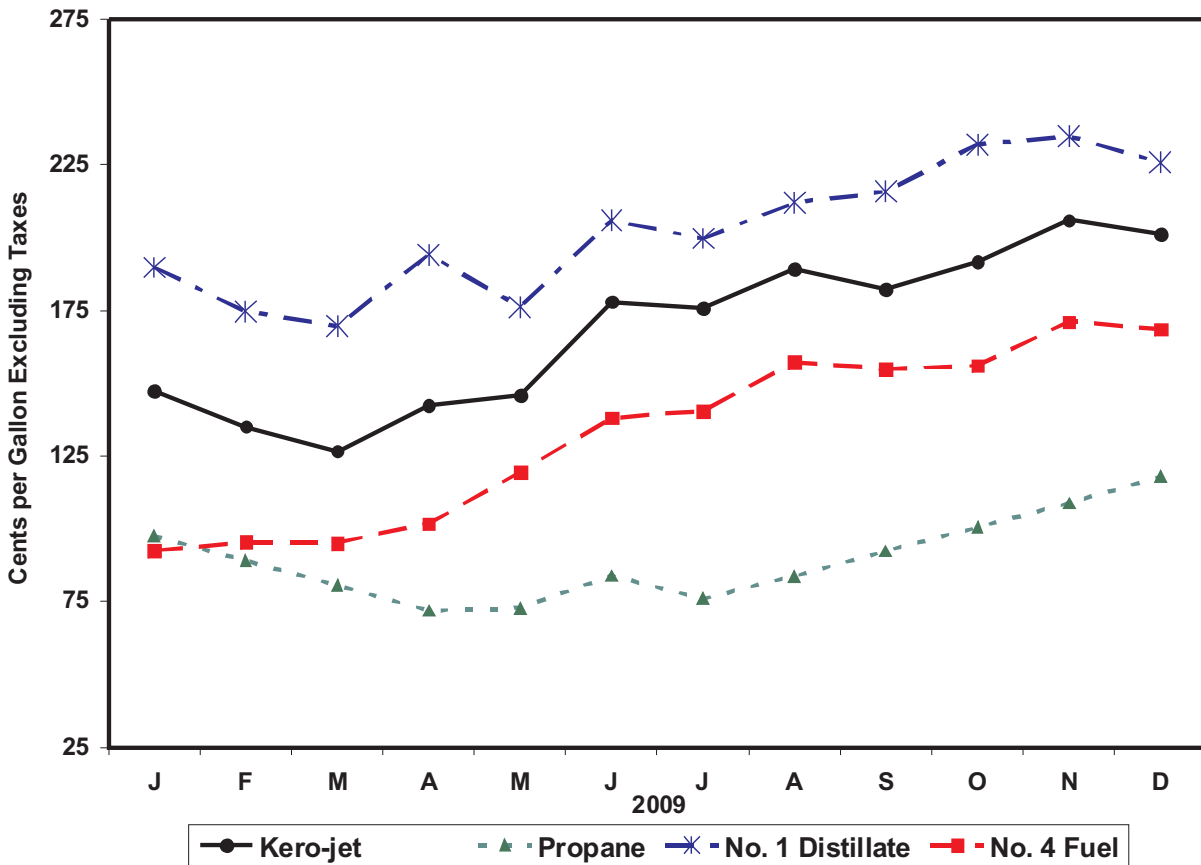
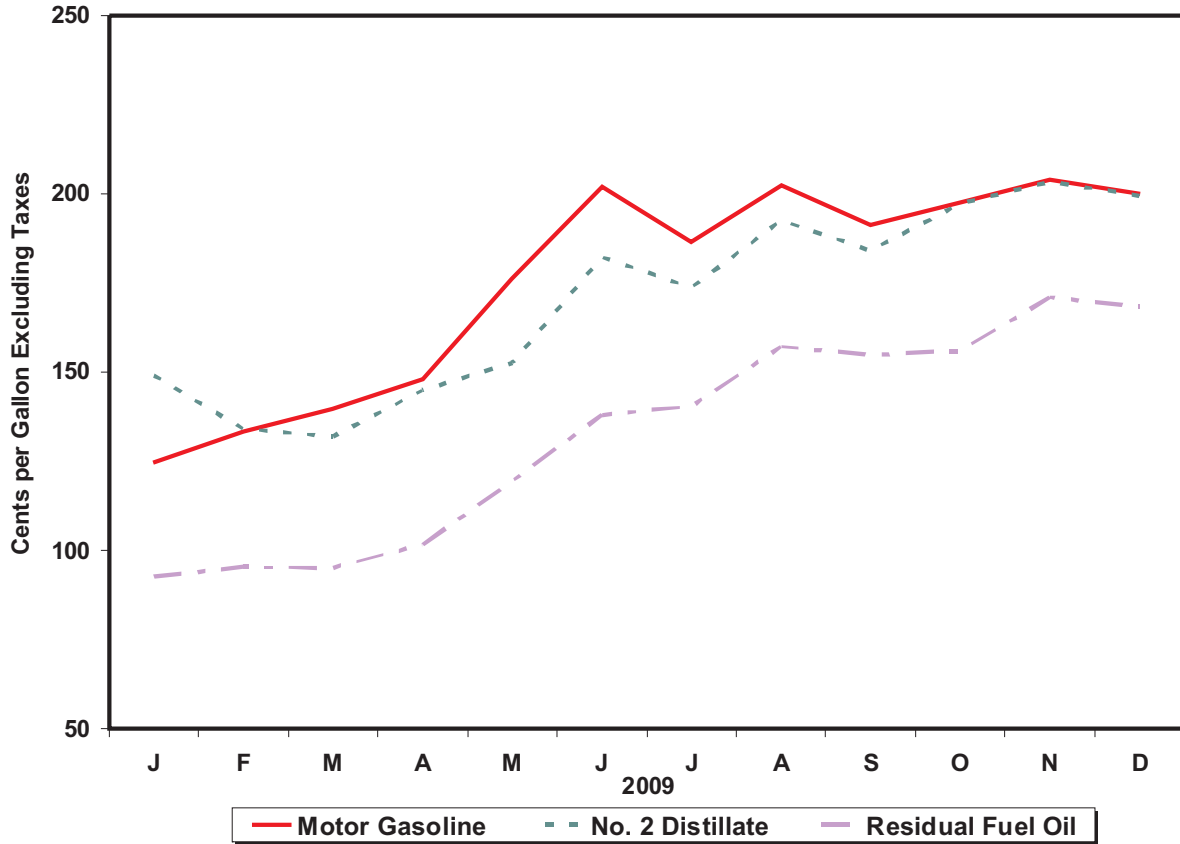
W = Withheld to avoid disclosure of individual company data.

^a Includes No. 4 fuel oil and No. 4 diesel fuel.

Note: Motor gasoline averages and totals prior to October 1993 include leaded gasoline.

Sources: Energy Information Administration Form EIA-782A, "Refiners'/Gas Plant Operators' Monthly Petroleum Product Sales Report," January 1983 forward; Form EIA-460, "Petroleum Industry Monthly Report for Product Prices," source for backcast estimates prior to January 1983.

Figure 4. U.S. Refiner Wholesale Petroleum Product Prices



Source: Energy Information Administration, Form EIA-782A, "Refiners' /Gas Plant Operators' Monthly Petroleum Product Sales Report."

Table 5. U.S. Refiner Volumes of Petroleum Products for Resale
(Million Gallons per Day)

Year Month	Motor Gasoline	Aviation Gasoline	Kerosene- Type Jet Fuel	Propane (Consumer Grade)	Kerosene	No. 1 Distillate	No. 2 Distillate			No. 4 Fuel ^a	Residual Fuel Oil
							No. 2 Diesel Fuel	No. 2 Fuel Oil	Total		
1983	242.5	0.7	5.4	26.0	2.5	2.4	38.1	47.3	85.5	0.9	20.2
1984	246.3	0.8	6.6	26.7	2.2	2.6	42.8	51.4	94.2	1.7	21.3
1985	256.9	0.7	7.6	29.2	2.4	2.7	43.3	53.9	97.3	1.2	19.9
1986	257.2	0.7	9.2	26.3	2.4	2.5	46.4	53.8	100.3	1.2	18.6
1987	257.2	0.8	10.1	27.0	2.3	2.0	44.3	49.3	93.6	1.5	16.9
1988	263.7	0.7	10.0	27.7	2.7	2.6	47.8	50.1	97.9	1.2	18.9
1989	260.7	0.7	8.6	25.9	2.7	2.7	50.7	46.7	97.5	1.2	21.0
1990	264.8	0.7	8.8	25.5	2.2	2.4	51.9	45.9	97.8	0.8	17.9
1991	261.3	0.7	8.7	25.4	2.1	2.4	51.5	46.9	98.3	0.4	17.8
1992	265.4	0.7	8.0	26.7	2.2	2.3	50.8	48.9	99.7	0.4	15.2
1993	266.9	0.6	8.3	27.9	2.3	2.3	58.0	43.6	101.7	0.4	12.6
1994	276.7	0.7	9.1	28.4	2.5	1.9	72.4	32.9	105.3	0.4	12.8
1995	288.8	0.6	9.9	30.6	2.4	1.7	75.9	31.0	106.9	0.3	13.6
1996	293.6	0.6	11.5	32.9	2.7	1.8	83.7	33.1	116.8	0.3	13.8
1997	292.7	0.6	11.3	32.2	2.5	1.6	88.7	31.2	119.9	0.2	11.5
1998	300.4	0.6	12.2	32.7	2.2	1.4	91.9	27.3	119.2	0.1	15.4
1999	306.9	0.7	15.2	33.6	2.4	1.7	95.5	24.3	119.9	0.2	11.5
2000	304.4	0.6	15.7	34.8	2.3	1.5	98.8	23.3	122.1	0.2	10.5
2001	305.2	0.6	14.3	35.0	2.2	1.4	101.3	25.2	126.4	0.1	10.3
2002	311.8	0.6	12.1	32.9	2.0	1.3	100.8	23.6	124.4	0.1	8.8
2003	311.6	0.5	12.2	36.5	2.3	1.2	108.9	20.9	129.8	0.1	6.7
2004	316.4	0.6	12.7	40.3	2.1	1.3	116.5	19.6	136.1	NA	5.9
2005	321.8	0.5	15.2	35.1	2.0	1.4	118.7	20.6	139.3	NA	4.7
2006	315.6	0.5	15.2	39.4	1.4	1.3	123.2	16.7	139.9	0.3	6.5
2007											
January	297.6	0.4	15.2	48.6	2.3	1.8	124.4	17.8	142.1	0.4	8.5
February	310.3	0.4	15.9	50.8	3.3	1.8	130.0	21.5	151.6	0.2	7.3
March	316.4	0.4	16.5	39.3	1.4	0.7	129.7	19.0	148.7	0.3	7.3
April	318.5	0.5	15.0	39.3	1.1	0.3	131.2	10.9	142.1	0.2	8.0
May	330.2	0.5	16.0	36.2	0.6	0.3	136.3	7.9	144.2	0.2	7.9
June	328.1	0.5	16.5	34.7	0.6	0.4	138.9	9.5	148.4	0.2	6.7
July	321.3	0.5	15.1	31.7	0.6	0.2	132.3	9.4	141.7	0.3	7.5
August	330.2	0.6	15.2	36.0	0.7	0.5	143.2	10.5	153.7	0.3	9.5
September	320.8	0.5	15.8	40.0	0.7	0.4	135.5	11.3	146.8	0.2	7.9
October	323.4	0.5	19.9	44.2	1.6	0.8	151.3	13.0	164.3	0.3	9.2
November	318.4	0.4	18.6	45.6	1.6	1.3	139.7	17.2	156.9	0.2	10.1
December	321.6	0.3	18.9	54.7	2.1	1.7	131.2	25.8	157.0	0.3	8.7
2007	319.8	0.5	16.6	41.7	1.4	0.9	135.3	14.5	149.8	0.3	8.2
2008											
January	300.7	0.3	17.8	53.6	2.2	1.8	131.7	25.0	156.7	0.3	7.4
February	310.1	0.3	16.5	46.5	1.8	1.7	131.7	25.7	157.3	0.2	8.1
March	313.3	0.4	16.9	34.9	0.7	0.7	133.6	18.1	151.7	0.2	10.5
April	316.8	0.4	17.6	29.1	0.2	0.3	144.1	14.1	158.1	0.3	10.1
May	312.1	0.4	18.1	26.7	0.3	0.3	143.6	9.8	153.4	0.1	11.0
June	312.8	0.5	15.3	26.1	0.4	0.4	150.7	10.9	161.6	W	12.2
July	303.0	0.5	18.9	25.1	0.9	0.4	142.7	10.3	153.0	W	10.1
August	312.2	0.4	15.4	24.1	0.6	0.4	142.7	9.3	152.0	W	8.4
September	291.9	0.3	15.1	29.7	0.7	0.6	131.2	9.9	141.1	W	7.9
October	306.1	0.4	15.0	33.4	1.2	0.9	143.1	11.1	154.2	W	10.0
November	295.0	0.3	15.6	36.4	1.3	1.7	130.7	13.8	144.5	W	8.7
December	302.3	0.2	15.6	45.6	1.7	2.6	138.6	21.3	159.9	W	9.4
2008	306.4	0.4	16.5	34.2	1.0	1.0	138.7	14.9	153.6	0.2	9.5
2009											
January	284.3	0.3	11.4	45.4	2.3	2.6	121.4	23.2	144.7	W	8.8
February	294.2	0.2	12.7	41.4	1.6	1.5	116.9	21.8	138.6	W	9.4
March	291.3	0.3	12.8	31.2	0.9	0.9	122.3	19.0	141.3	W	11.1
April	302.0	0.3	13.4	26.7	1.1	0.4	130.8	15.2	146.0	W	7.7
May	308.0	0.3	13.5	22.5	0.6	0.3	132.8	10.1	143.0	W	9.1
June	330.7	0.5	16.0	25.0	0.9	0.3	137.3	9.7	147.0	W	8.9
July	320.6	0.5	17.3	25.2	1.1	0.3	130.4	11.1	141.4	W	10.3
August	318.1	0.5	16.6	24.0	1.2	0.4	127.8	11.6	139.5	W	10.8
September	314.2	0.4	18.8	27.3	1.3	0.5	136.6	14.1	150.7	W	9.5
October	308.9	0.4	14.8	31.6	1.4	0.9	129.1	12.0	141.1	W	10.8
November	299.0	0.3	15.9	37.7	1.7	1.2	127.3	12.0	139.3	0.1	10.4
December	316.2	0.3	18.9	44.3	2.1	2.8	123.2	21.5	144.7	0.2	10.5
2009	307.4	0.4	15.2	31.8	1.3	1.0	128.0	15.1	143.1	0.1	9.8

NA = Not available.

W = Withheld to avoid disclosure of individual company data.

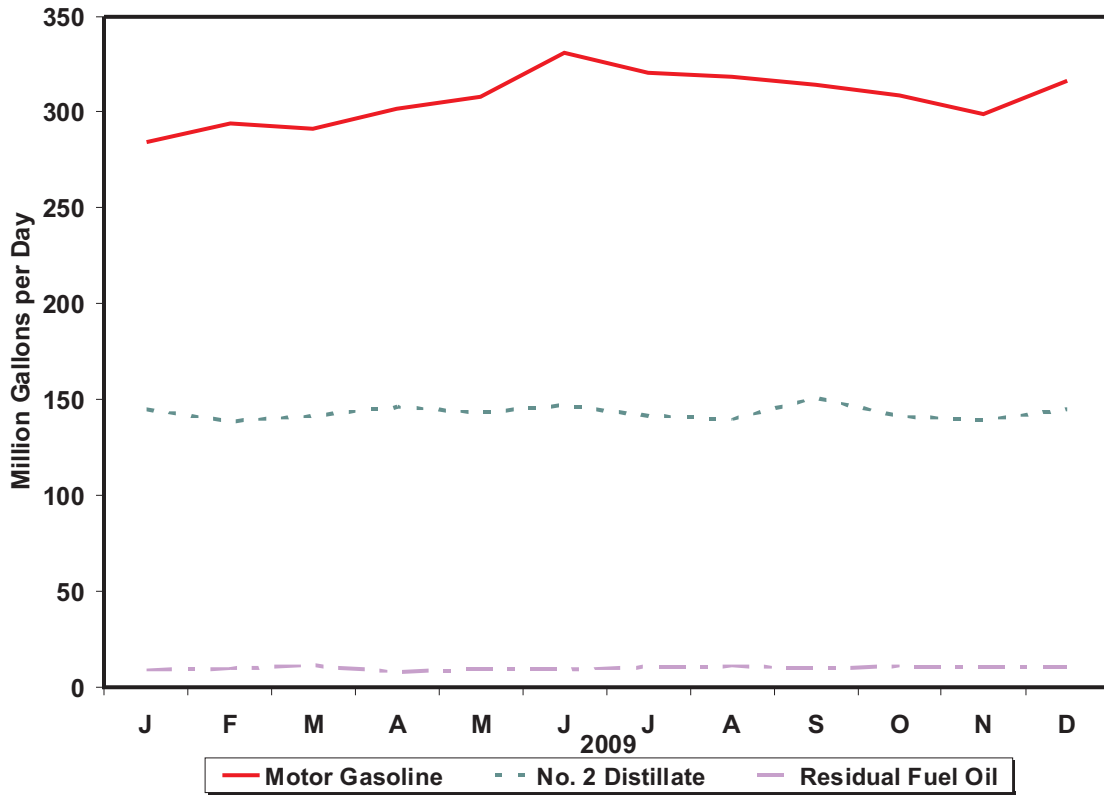
^a Includes No. 4 fuel oil and No. 4 diesel fuel.

Note: Motor gasoline averages and totals prior to October 1993 include leaded gasoline.

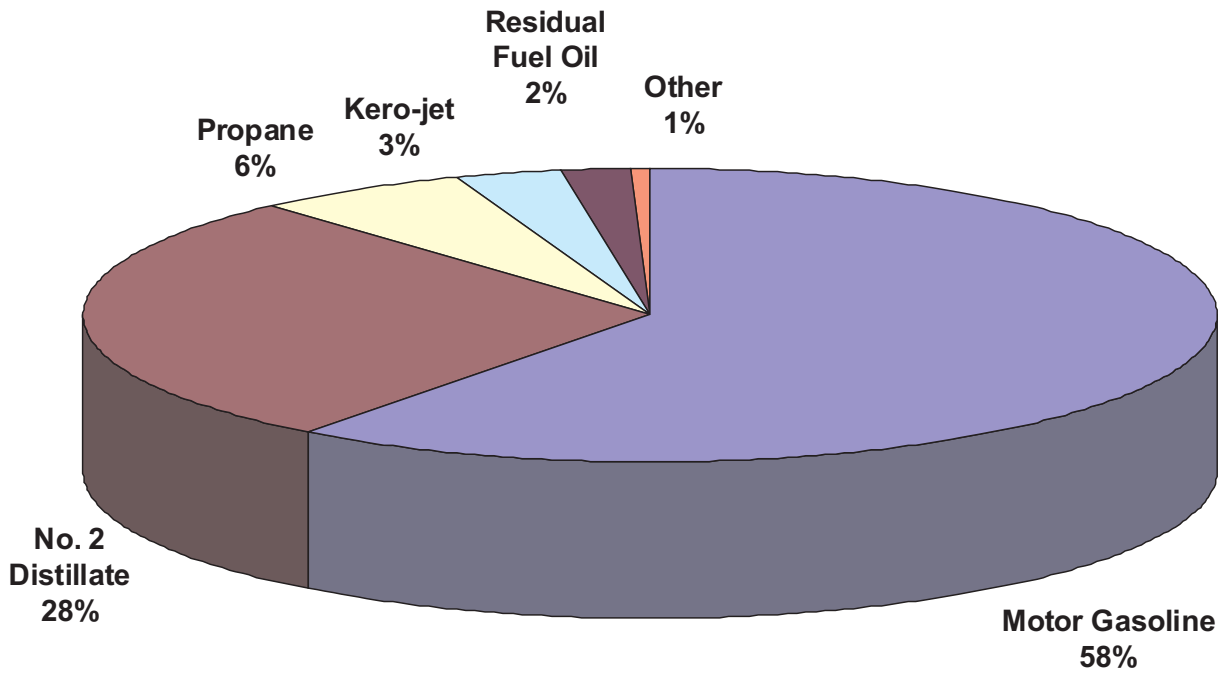
Note: Totals may not equal the sum of the components due to rounding.

Source: Energy Information Administration Form EIA-782A, "Refiners/Gas Plant Operators' Monthly Petroleum Product Sales Report."

Figure 5. U.S. Refiner Wholesale Petroleum Product Volumes



Percentages of Refiner Wholesale Volumes



Source: Energy Information Administration, Form EIA-782A, "Refiners' /Gas Plant Operators' Monthly Petroleum Product Sales Report."

Table 6. U.S. Refiner Motor Gasoline Prices by Grade and Sales Type
(Cents per Gallon Excluding Taxes)

Year Month	Regular						Midgrade					
	Sales to End Users		Sales for Resale				Sales to End Users		Sales for Resale			
	Through Retail Outlets	Average ^a	DTW	Rack	Bulk	Average	Through Retail Outlets	Average ^a	DTW	Rack	Bulk	Average
1983	98.0	97.0	-	-	-	89.5	-	-	-	-	-	-
1984	92.2	91.4	-	-	-	84.2	-	-	-	-	-	-
1985	92.5	91.7	-	-	-	84.3	-	-	-	-	-	-
1986	62.4	61.6	-	-	-	52.2	-	-	-	-	-	-
1987	65.9	65.0	-	-	-	56.9	-	-	-	-	-	-
1988	64.9	64.1	-	-	-	54.8	-	-	-	-	-	-
1989	72.0	71.4	-	-	-	61.8	79.6	79.3	-	-	-	68.6
1990	85.3	84.9	-	-	-	75.8	92.3	92.1	-	-	-	81.4
1991	76.4	76.1	-	-	-	67.2	84.7	84.3	-	-	-	73.3
1992	74.6	74.3	-	-	-	64.5	83.1	82.7	-	-	-	70.8
1993	71.6	71.2	-	-	-	59.3	81.0	80.5	-	-	-	66.0
1994	69.5	68.9	64.6	54.7	50.2	56.6	79.1	78.5	70.4	58.4	NA	63.8
1995	72.3	71.7	68.2	57.6	53.4	59.3	81.3	80.8	73.7	61.9	NA	67.0
1996	81.2	80.7	77.0	67.2	62.2	68.5	90.1	89.6	82.4	70.9	NA	75.9
1997	80.3	79.8	76.4	65.6	61.5	67.3	89.8	89.5	82.2	69.4	71.1	74.9
1998	63.4	63.0	59.6	48.1	44.9	49.9	73.1	72.8	65.5	52.1	NA	57.6
1999	74.7	74.2	73.0	60.5	54.2	62.0	83.8	83.5	78.4	63.9	NA	69.6
2000	107.7	107.3	104.2	92.7	87.3	94.2	117.1	116.8	109.9	96.0	-	101.3
2001	100.0	99.7	97.7	84.8	78.6	86.5	110.3	110.0	104.2	88.8	-	94.5
2002	91.5	91.2	88.6	80.1	73.5	80.6	101.3	101.0	96.8	83.9	-	88.5
2003	112.7	112.3	113.4	96.5	88.8	98.1	122.2	121.8	119.6	100.4	-	106.1
2004	140.7	140.4	141.4	125.7	118.2	126.9	150.3	149.9	146.9	129.6	-	134.0
2005	180.5	180.2	176.5	165.3	156.8	165.4	189.6	189.3	182.1	168.1	-	170.8
2006	210.2	209.9	208.2	194.4	186.6	195.0	221.6	221.3	215.7	198.7	-	201.6
2007												
January	175.7	175.5	179.4	151.8	148.7	154.9	190.0	189.8	186.2	155.1	-	160.6
February	181.1	180.9	183.0	169.6	157.2	169.5	194.1	194.0	190.5	175.0	-	177.6
March	210.6	210.3	217.7	196.4	183.0	197.1	224.6	224.4	225.1	200.8	-	204.9
April	237.5	237.2	241.3	224.3	208.3	223.9	251.5	251.2	249.8	228.1	-	231.6
May	264.6	264.1	259.8	250.1	228.0	247.1	276.9	276.7	268.8	259.8	-	261.1
June	254.1	253.7	247.4	234.2	222.4	233.7	268.1	267.9	256.8	241.3	-	243.5
July	246.0	245.7	236.6	228.8	219.1	228.1	258.9	258.8	246.1	238.8	-	239.9
August	229.2	228.9	217.1	213.7	205.1	212.6	241.4	241.3	226.6	225.4	-	225.5
September	231.0	230.8	218.6	220.1	206.2	217.3	242.5	242.4	228.0	226.7	-	226.9
October	231.9	231.7	227.2	220.5	211.0	219.7	245.2	245.0	236.3	223.0	-	224.8
November	258.7	258.4	252.9	244.6	234.1	243.8	271.3	271.1	261.2	247.4	-	249.3
December	252.2	251.9	247.8	233.2	227.8	233.9	265.5	265.3	255.9	235.0	-	237.9
2007	231.8	231.5	227.8	216.1	207.4	216.1	244.0	243.8	235.1	222.6	-	224.5
2008												
January	254.4	254.0	246.3	236.9	235.1	237.8	266.7	266.5	254.3	239.5	-	241.3
February	254.0	253.7	244.6	243.2	234.2	241.8	266.0	265.9	252.8	245.3	-	246.2
March	275.7	275.4	271.7	262.6	253.9	262.1	288.4	288.2	281.2	263.8	-	266.0
April	295.8	295.6	291.1	286.0	271.5	284.1	308.9	308.8	301.2	287.4	-	289.1
May	329.3	329.1	319.3	318.3	299.4	315.4	340.9	340.8	327.7	319.7	-	320.7
June	355.2	355.0	358.3	339.9	326.8	339.9	369.8	369.7	366.5	337.2	-	340.5
July	354.1	353.8	353.6	331.1	326.3	333.0	368.8	368.6	362.0	331.2	-	334.5
August	324.9	324.7	319.9	305.8	297.4	305.9	340.7	340.6	328.6	309.2	-	311.4
September	318.4	318.2	300.7	298.8	294.0	298.3	328.6	328.6	309.9	299.4	-	300.6
October	250.5	250.0	247.8	207.2	212.5	212.7	267.8	267.6	257.2	210.6	-	215.9
November	158.1	158.0	159.0	134.0	136.4	137.3	174.8	174.8	168.0	137.5	-	141.1
December	118.6	118.7	114.7	103.2	100.3	104.1	131.8	131.9	123.4	108.8	-	110.5
2008	275.2	274.8	270.2	255.8	252.5	257.0	288.0	287.9	277.5	258.8	-	261.0
2009												
January	133.0	133.0	129.1	124.0	109.3	122.5	144.3	144.3	139.3	129.8	-	130.9
February	144.1	143.7	146.3	130.6	119.7	131.2	157.8	157.7	155.6	133.0	-	135.7
March	147.6	147.3	145.6	138.1	125.4	137.7	160.3	160.2	155.3	141.7	-	143.3
April	157.3	156.9	155.7	146.1	137.1	146.2	171.2	171.1	165.6	147.8	-	149.8
May	183.1	182.8	178.0	176.3	159.7	174.2	195.2	195.2	188.3	178.7	-	179.7
June	216.3	215.7	213.7	200.8	188.6	200.2	229.2	229.1	222.8	203.8	-	205.8
July	203.8	203.1	204.6	183.4	174.4	184.5	219.9	219.9	214.0	185.1	-	188.2
August	212.7	212.2	217.0	200.2	189.9	200.5	228.5	228.5	227.4	200.6	-	203.5
September	205.3	204.7	218.3	186.1	182.7	189.3	223.1	222.9	229.3	186.5	-	191.1
October	207.4	207.0	210.8	195.9	181.3	195.4	222.7	222.6	223.1	199.1	-	201.7
November	214.3	213.9	214.2	201.0	196.9	202.0	229.6	229.5	224.4	204.6	-	206.8
December	211.6	211.2	211.0	197.4	191.7	198.0	226.1	226.1	221.0	200.7	-	202.7
2009	186.0	185.6	186.6	174.4	166.8	174.7	199.8	199.7	195.7	176.2	-	178.4

See footnotes at end of table.

Table 6. U.S. Refiner Motor Gasoline Prices by Grade and Sales Type

(Cents per Gallon Excluding Taxes) — Continued

Year Month	Premium						All Grades					
	Sales to End Users		Sales for Resale				Sales to End Users		Sales for Resale			
	Through Retail Outlets	Average ^a	DTW	Rack	Bulk	Average	Through Retail Outlets	Average ^a	DTW	Rack	Bulk	Average
1983	108.0	105.7	-	-	-	96.4	96.4	95.4	-	-	-	88.2
1984	102.1	101.5	-	-	-	91.6	91.4	90.7	-	-	-	83.2
1985	103.0	102.3	-	-	-	92.2	92.1	91.2	-	-	-	83.5
1986	74.8	73.7	-	-	-	61.0	63.2	62.4	-	-	-	53.1
1987	79.0	78.4	-	-	-	67.1	67.8	66.9	-	-	-	58.9
1988	79.4	78.8	-	-	-	67.2	68.1	67.3	-	-	-	57.7
1989	87.4	86.8	-	-	-	74.9	76.3	75.6	-	-	-	65.4
1990	99.0	98.5	-	-	-	87.4	88.8	88.3	-	-	-	78.6
1991	91.2	90.7	-	-	-	79.2	80.0	79.7	-	-	-	69.9
1992	92.0	91.4	-	-	-	77.4	79.2	78.7	-	-	-	67.7
1993	89.6	88.9	-	-	-	72.2	76.5	75.9	-	-	-	62.6
1994	87.3	86.5	78.7	64.0	55.6	69.5	74.4	73.8	69.3	56.7	50.9	59.9
1995	89.7	89.0	82.2	67.3	58.3	72.2	77.1	76.5	72.9	59.8	54.0	62.6
1996	97.9	97.2	89.7	76.2	66.9	80.3	85.3	84.7	80.9	69.0	62.7	71.3
1997	97.9	97.3	89.5	74.9	65.8	79.2	84.4	83.9	80.3	67.4	62.0	70.0
1998	81.1	80.5	72.6	57.3	48.9	61.7	67.8	67.3	63.6	50.0	45.4	52.6
1999	91.2	90.6	85.1	68.7	58.5	72.6	78.5	78.1	76.5	62.1	54.9	64.5
2000	125.0	124.2	117.4	101.7	92.7	105.5	111.1	110.6	107.4	94.0	87.9	96.3
2001	118.1	117.5	111.2	93.6	83.0	98.0	103.5	103.2	100.9	86.2	79.1	88.6
2002	109.4	108.8	103.0	89.9	80.0	92.8	94.9	94.7	92.2	81.6	74.1	82.8
2003	131.2	130.5	126.9	106.4	95.5	111.3	116.0	115.6	116.4	97.8	89.3	100.2
2004	160.3	159.6	155.3	136.1	127.4	140.8	143.9	143.5	144.2	127.0	118.7	128.8
2005	200.0	199.2	190.1	176.0	169.6	178.9	183.3	182.9	179.1	166.4	157.6	167.0
2006	232.6	232.0	223.1	209.3	198.8	211.7	213.1	212.8	211.0	195.9	187.3	196.9
2007												
January	202.4	202.0	197.0	168.6	155.3	174.1	179.4	179.1	182.7	153.5	149.2	157.0
February	205.7	205.4	201.1	185.6	167.5	188.1	184.4	184.2	186.4	171.3	157.8	171.7
March	236.7	236.2	236.1	214.8	205.0	219.2	214.1	213.8	221.0	198.2	184.0	199.5
April	263.4	262.9	260.3	245.2	232.9	247.2	240.8	240.5	244.7	226.3	210.1	226.4
May	287.8	287.1	278.4	267.2	245.6	268.1	267.4	266.9	263.1	252.0	228.7	249.5
June	279.5	278.8	266.8	254.0	237.6	255.1	257.4	256.9	251.0	236.3	223.3	236.1
July	270.2	269.6	256.0	249.2	239.1	250.1	249.1	248.8	240.2	231.2	219.9	230.7
August	253.1	252.5	236.0	233.3	223.3	233.4	232.3	232.0	220.7	216.2	205.6	215.2
September	253.7	253.2	237.4	238.5	225.9	237.3	234.0	233.7	222.1	222.2	207.0	219.5
October	256.8	256.3	246.4	239.3	228.9	240.4	235.2	235.0	230.7	222.3	211.6	221.8
November	283.3	282.7	272.1	262.5	246.8	263.5	261.7	261.4	256.3	246.2	234.7	245.8
December	278.7	278.1	267.4	250.6	237.8	253.5	255.5	255.2	251.3	234.7	228.3	235.8
2007	255.8	255.2	246.0	233.9	220.9	235.7	234.9	234.5	231.1	218.0	208.0	218.2
2008												
January	279.2	278.5	265.3	254.2	245.5	256.2	257.4	257.1	249.5	238.5	235.6	239.5
February	278.0	277.6	263.2	260.5	245.3	260.0	256.9	256.6	247.8	244.7	234.7	243.6
March	300.4	300.0	291.1	282.3	271.2	283.6	278.6	278.3	274.9	264.2	254.6	264.0
April	320.5	320.2	310.7	305.2	292.5	305.2	298.7	298.4	294.4	287.6	272.5	286.1
May	352.5	352.0	337.7	336.9	324.4	336.1	331.8	331.6	322.2	319.8	300.5	317.2
June	383.3	382.5	377.8	358.2	346.1	361.3	358.2	358.0	361.2	341.1	327.8	341.6
July	381.9	381.2	373.0	350.0	337.7	354.2	357.1	356.8	356.6	332.5	326.8	334.7
August	353.3	352.6	338.8	324.5	315.0	327.0	328.2	327.9	322.9	307.4	298.0	307.8
September	338.3	338.2	318.3	318.7	311.9	318.1	320.8	320.7	303.6	300.4	294.7	300.0
October	281.7	280.8	267.7	228.8	222.7	237.4	254.2	253.7	251.2	209.1	212.9	214.9
November	188.5	188.3	178.6	153.7	143.7	159.1	161.8	161.7	162.5	135.7	136.7	139.3
December	144.8	144.7	133.2	121.6	112.7	123.7	121.8	121.9	118.1	105.0	100.9	106.1
2008	297.1	296.5	284.6	271.8	268.9	274.6	277.8	277.5	272.6	257.2	253.2	258.6
2009												
January	156.6	156.5	147.7	142.0	126.7	142.4	135.8	135.8	132.4	125.7	110.1	124.6
February	170.5	170.0	165.4	150.3	133.5	153.2	147.2	146.8	149.6	132.3	120.2	133.3
March	172.4	172.0	164.3	157.4	140.2	158.0	150.6	150.3	148.9	139.9	126.2	139.7
April	183.4	182.8	174.8	166.1	152.5	167.4	160.5	160.1	159.1	147.9	137.8	148.2
May	207.1	206.6	197.0	195.7	179.3	194.9	186.0	185.6	181.3	178.0	160.7	176.3
June	241.9	241.2	233.1	220.4	205.9	222.4	219.2	218.7	217.0	202.6	189.1	202.2
July	232.5	231.5	224.5	203.4	188.5	206.7	207.4	206.7	208.0	185.2	175.2	186.7
August	241.3	240.4	237.0	220.2	205.0	222.6	216.2	215.7	220.4	201.9	190.6	202.6
September	237.3	236.1	238.4	206.8	193.9	212.6	209.2	208.6	221.8	187.9	183.2	191.5
October	236.2	235.3	231.2	214.7	192.8	216.6	210.9	210.4	214.4	197.6	181.9	197.5
November	242.4	241.6	233.6	219.6	204.1	221.1	217.8	217.3	217.6	202.7	197.4	203.9
December	239.2	238.3	230.5	215.8	199.0	217.1	214.9	214.4	214.4	199.1	192.2	199.9
2009	212.8	212.2	205.9	194.1	181.6	195.8	189.2	188.8	189.9	176.1	167.5	176.7

Dash (-) = No data reported.

NA = Not available.

^a Includes sales through retail outlets as well as all direct sales to end users that were not made through company-operated retail outlets, e.g., sales to agricultural customers, commercial sales, and industrial sales.

Notes: Data for the 4th quarter of 1993 were derived from two separate survey systems. The DTW, Rack, and Bulk components were derived from the revised EIA-782 survey system, while the End-Use and Average Resale categories were derived from the predecessor EIA-782 survey system. Therefore, the DTW, Rack, and Bulk components are not consistent with the Average Resale category. Beginning January 1994, all data are from the revised EIA-782 survey system and are consistent.

Note: Motor gasoline averages and totals prior to October 1993 include leaded gasoline.

Source: Energy Information Administration Form EIA-782A, "Refiners/Gas Plant Operators' Monthly Petroleum Product Sales Report."

Table 7. U.S. Refiner Motor Gasoline Volumes by Grade and Sales Type

(Million Gallons per Day)

Year Month	Regular						Midgrade					
	Sales to End Users		Sales for Resale				Sales to End Users		Sales for Resale			
	Through Retail Outlets	Total ^a	DTW	Rack	Bulk	Total	Through Retail Outlets	Total ^a	DTW	Rack	Bulk	Total
1983	20.0	23.5	-	-	-	98.3	-	-	-	-	-	-
1984	24.3	27.8	-	-	-	106.8	-	-	-	-	-	-
1985	26.2	29.9	-	-	-	119.7	-	-	-	-	-	-
1986	30.9	34.7	-	-	-	127.0	-	-	-	-	-	-
1987	32.7	36.1	-	-	-	141.9	-	-	-	-	-	-
1988	34.2	37.3	-	-	-	153.6	-	-	-	-	-	-
1989	34.3	36.8	-	-	-	155.7	4.9	5.1	-	-	-	16.4
1990	36.7	38.8	-	-	-	174.5	7.4	7.6	-	-	-	23.1
1991	38.4	40.4	-	-	-	180.9	7.9	8.2	-	-	-	23.7
1992	36.5	38.4	-	-	-	182.2	8.9	9.2	-	-	-	27.5
1993	35.6	37.2	-	-	-	184.0	8.7	8.9	-	-	-	27.7
1994	34.3	35.9	47.7	120.3	24.3	192.3	8.5	8.7	12.8	15.7	0.2	28.7
1995	34.3	35.9	43.8	126.2	31.8	201.8	9.6	9.8	13.3	17.2	0.1	30.6
1996	37.2	38.9	46.5	131.9	35.2	213.6	9.5	9.8	12.9	16.6	NA	29.5
1997	40.5	42.4	46.2	135.7	33.9	215.8	9.7	10.0	12.1	16.3	NA	28.4
1998	41.7	43.2	44.4	138.9	37.1	220.3	10.1	10.3	11.1	16.3	NA	27.4
1999	41.6	43.0	45.6	147.5	34.5	227.6	9.9	10.1	10.5	16.1	NA	26.6
2000	43.6	45.0	47.5	159.3	32.4	239.3	8.6	8.7	8.8	14.2	-	23.0
2001	45.0	46.3	47.2	163.2	33.0	243.5	8.3	8.4	7.8	13.3	-	21.1
2002	46.2	47.4	46.9	163.0	39.2	249.2	8.3	8.5	7.4	13.4	-	20.8
2003	47.3	48.6	43.5	171.4	40.1	255.0	7.8	7.9	5.5	13.1	-	18.6
2004	44.5	45.8	41.1	182.1	42.2	265.4	6.4	6.5	4.4	12.7	-	17.0
2005	46.4	47.5	37.5	189.8	45.8	273.2	5.9	6.0	3.2	13.5	-	16.7
2006	48.2	49.4	34.8	196.0	40.8	271.7	5.5	5.5	2.4	11.7	-	14.1
2007												
January	44.1	44.9	32.8	187.1	35.5	255.4	5.0	5.0	2.2	10.3	-	12.5
February	45.8	46.8	34.4	193.8	38.1	266.3	5.2	5.2	2.3	11.5	-	13.8
March	46.3	47.3	35.2	198.1	40.1	273.4	5.1	5.1	2.2	10.9	-	13.1
April	46.8	47.7	34.7	196.5	43.6	274.9	5.0	5.0	2.1	11.4	-	13.5
May	48.2	49.2	34.8	198.6	54.0	287.4	4.9	4.9	2.1	11.4	-	13.5
June	49.9	50.8	33.8	199.5	50.5	283.8	5.0	5.1	2.0	12.0	-	14.0
July	48.1	48.9	33.2	197.4	46.9	277.5	4.9	5.0	2.0	12.2	-	14.1
August	48.9	49.8	33.6	202.4	48.9	284.9	5.1	5.1	2.0	12.5	-	14.5
September	47.0	47.9	32.9	191.2	53.5	277.6	5.0	5.0	2.0	11.6	-	13.6
October	47.2	47.9	34.7	196.8	48.1	279.5	5.0	5.0	2.0	12.3	-	14.3
November	46.6	47.3	34.4	194.7	48.0	277.0	4.7	4.7	1.9	12.1	-	14.0
December	44.8	45.5	34.0	192.1	54.2	280.2	4.7	4.7	1.9	11.9	-	13.8
2007	47.0	47.8	34.0	195.7	46.8	276.6	5.0	5.0	2.0	11.7	-	13.7
2008												
January	44.2	45.1	32.5	185.9	43.2	261.7	4.5	4.5	1.7	11.7	-	13.4
February	45.8	46.9	33.8	189.5	46.3	269.5	4.6	4.7	1.8	12.4	-	14.2
March	45.8	46.7	34.2	190.0	50.4	274.7	4.5	4.5	1.7	11.6	-	13.2
April	46.6	47.7	34.2	195.5	48.4	278.0	4.4	4.4	1.6	11.3	-	13.0
May	47.1	48.1	33.8	196.6	45.0	275.4	4.2	4.3	1.5	11.0	-	12.5
June	46.9	48.0	33.4	197.1	45.9	276.4	4.0	4.1	1.4	11.0	-	12.4
July	45.9	46.9	31.7	193.7	41.6	267.1	3.9	4.0	1.3	11.0	-	12.3
August	46.3	47.3	31.5	196.8	47.7	275.9	4.0	4.1	1.3	10.6	-	12.0
September	44.0	45.0	31.7	184.6	40.1	256.4	3.8	3.9	1.4	10.6	-	11.9
October	45.7	47.0	31.3	196.7	41.1	269.0	3.8	3.9	1.4	10.5	-	11.9
November	44.5	45.7	30.6	192.1	35.9	258.5	3.9	3.9	1.3	10.0	-	11.3
December	44.1	45.2	31.1	193.2	39.2	263.5	4.0	4.0	1.4	10.4	-	11.8
2008	45.6	46.6	32.5	192.7	43.7	268.8	4.1	4.2	1.5	11.0	-	12.5
2009												
January	41.5	43.2	31.9	181.2	35.3	248.4	3.7	3.7	1.3	9.8	-	11.1
February	41.5	43.2	33.4	190.7	33.0	257.1	3.6	3.7	1.4	10.2	-	11.6
March	41.6	43.3	33.5	190.2	29.6	253.4	3.7	3.7	1.4	10.0	-	11.3
April	41.5	43.3	33.7	195.0	34.0	262.7	3.7	3.7	1.4	10.8	-	12.1
May	41.5	43.1	33.9	197.8	36.4	268.1	3.6	3.6	1.3	10.7	-	12.1
June	41.3	42.9	33.1	207.2	50.6	291.0	3.5	3.5	1.3	10.7	-	12.0
July	40.3	42.0	32.4	205.2	41.3	279.0	3.5	3.5	1.3	10.7	-	12.0
August	40.6	42.3	32.4	202.0	43.5	277.8	3.5	3.5	1.3	10.6	-	11.8
September	39.5	41.2	31.6	200.6	42.5	274.7	3.4	3.4	1.2	10.1	-	11.4
October	39.4	41.1	31.5	198.7	40.5	270.7	3.4	3.4	1.2	9.7	-	10.9
November	38.6	40.2	30.3	192.7	38.3	261.3	3.3	3.3	1.2	9.4	-	10.6
December	38.5	40.2	30.7	199.9	46.3	276.9	3.3	3.3	1.1	9.8	-	10.9
2009	40.5	42.2	32.4	196.8	39.3	268.5	3.5	3.5	1.3	10.2	-	11.5

See footnotes at end of table.

Table 7. U.S. Refiner Motor Gasoline Volumes by Grade and Sales Type

(Million Gallons per Day) — Continued

Year Month	Premium						All Grades					
	Sales to End Users		Sales for Resale				Sales to End Users		Sales for Resale			
	Through Retail Outlets	Total ^a	DTW	Rack	Bulk	Total	Through Retail Outlets	Total ^a	DTW	Rack	Bulk	Total
1983	5.0	6.2	-	-	-	28.7	42.3	51.1	-	-	-	242.5
1984	8.5	9.2	-	-	-	33.7	50.3	57.6	-	-	-	246.3
1985	9.2	10.0	-	-	-	38.0	50.5	57.5	-	-	-	256.9
1986	9.0	9.8	-	-	-	45.1	54.2	61.2	-	-	-	257.2
1987	11.2	11.6	-	-	-	53.0	55.7	61.0	-	-	-	257.2
1988	13.8	14.5	-	-	-	62.4	56.7	61.0	-	-	-	263.7
1989	13.5	14.2	-	-	-	60.8	57.5	61.2	-	-	-	260.7
1990	11.2	11.7	-	-	-	53.7	57.4	60.3	-	-	-	264.8
1991	10.5	10.9	-	-	-	48.3	58.4	61.2	-	-	-	261.3
1992	10.3	10.7	-	-	-	51.7	56.4	59.0	-	-	-	265.4
1993	10.3	10.6	-	-	-	52.8	54.9	57.2	-	-	-	266.9
1994	10.0	10.3	22.6	29.9	3.2	55.7	52.8	55.0	83.1	165.9	27.7	276.7
1995	9.8	10.2	20.8	31.5	4.2	56.4	53.7	55.9	77.9	174.8	36.0	288.8
1996	8.4	8.8	18.2	28.3	4.1	50.5	55.1	57.5	77.5	176.8	39.3	293.6
1997	8.4	8.8	16.9	27.6	4.0	48.5	58.7	61.1	75.1	179.6	38.0	292.7
1998	9.6	9.9	17.4	30.9	4.3	52.7	61.4	63.3	73.0	186.1	41.4	300.4
1999	8.7	8.9	16.1	31.0	5.7	52.7	60.2	62.0	72.2	194.6	40.2	306.9
2000	6.9	7.1	13.0	24.4	4.7	42.1	59.1	60.9	69.4	197.9	37.1	304.4
2001	7.1	7.3	12.3	24.6	3.7	40.6	60.4	62.0	67.4	201.1	36.7	305.2
2002	7.5	7.8	12.5	25.2	4.1	41.8	62.1	63.6	66.9	201.7	43.3	311.8
2003	7.1	7.3	10.8	23.9	3.3	38.1	62.2	63.8	59.8	208.4	43.4	311.6
2004	5.9	6.1	9.4	22.3	2.3	34.0	56.9	58.4	54.8	217.1	44.5	316.4
2005	5.2	5.4	8.0	20.9	3.0	31.9	57.5	59.0	48.7	224.2	48.9	321.8
2006	4.9	5.1	7.1	20.3	2.4	29.7	58.6	60.0	44.3	228.0	43.2	315.6
2007												
January	4.7	4.8	7.0	19.9	2.8	29.7	53.7	54.7	42.0	217.3	38.3	297.6
February	4.8	4.9	7.3	20.7	2.2	30.2	55.9	57.0	44.1	225.9	40.3	310.3
March	4.7	4.9	7.0	20.9	2.0	29.9	56.1	57.3	44.4	229.9	42.1	316.4
April	4.6	4.7	6.8	19.8	3.5	30.1	56.4	57.4	43.7	227.7	47.1	318.5
May	4.5	4.6	6.8	20.1	2.3	29.3	57.6	58.7	43.7	230.1	56.3	330.2
June	4.9	5.0	6.8	20.3	3.3	30.4	59.8	60.9	42.6	231.7	53.8	328.1
July	4.8	4.9	6.8	20.9	2.0	29.6	57.8	58.8	41.9	230.4	48.9	321.3
August	5.1	5.2	7.1	22.2	1.5	30.8	59.1	60.2	42.7	237.1	50.5	330.2
September	4.9	5.0	7.0	20.4	2.2	29.6	56.9	57.9	41.9	223.2	55.8	320.8
October	4.8	4.9	7.1	20.6	1.9	29.6	57.0	57.8	43.8	229.7	49.9	323.4
November	4.4	4.5	6.7	18.5	2.3	27.4	55.7	56.6	42.9	225.2	50.3	318.4
December	4.4	4.4	6.7	18.3	2.6	27.6	53.9	54.7	42.5	222.3	56.8	321.6
2007	4.7	4.8	6.9	20.2	2.4	29.5	56.7	57.7	43.0	227.6	49.2	319.8
2008												
January	4.2	4.4	6.3	17.3	2.1	25.6	52.9	54.0	40.5	214.9	45.3	300.7
February	4.4	4.5	6.5	18.0	2.0	26.5	54.9	56.2	42.1	219.8	48.2	310.1
March	4.2	4.3	6.3	17.0	2.1	25.4	54.4	55.5	42.2	218.6	52.5	313.3
April	4.1	4.2	6.1	17.2	2.5	25.8	55.1	56.3	41.9	224.0	50.9	316.8
May	3.9	4.0	5.7	16.5	2.0	24.2	55.2	56.4	41.0	224.1	47.0	312.1
June	3.8	3.9	5.4	16.1	2.5	24.1	54.7	55.9	40.2	224.2	48.4	312.8
July	3.8	3.9	5.4	16.3	1.9	23.6	53.6	54.8	38.4	221.0	43.5	303.0
August	4.1	4.2	5.5	17.0	1.8	24.3	54.4	55.6	38.4	224.4	49.5	312.2
September	4.4	4.5	5.7	16.3	1.6	23.6	52.2	53.4	38.8	211.4	41.7	291.9
October	4.2	4.3	5.8	17.8	1.5	25.2	53.7	55.2	38.5	225.0	42.6	306.1
November	4.3	4.5	6.1	17.6	1.4	25.1	52.7	54.1	38.0	219.7	37.3	295.0
December	4.5	4.7	6.5	18.6	1.9	27.0	52.6	53.9	39.0	222.2	41.1	302.3
2008	4.2	4.3	5.9	17.1	1.9	25.0	53.9	55.1	39.9	220.8	45.7	306.4
2009												
January	4.1	4.2	6.1	17.0	1.7	24.9	49.3	51.1	39.4	207.9	37.0	284.3
February	4.0	4.1	6.3	17.9	1.3	25.5	49.2	51.0	41.1	218.8	34.3	294.2
March	4.2	4.3	6.6	18.3	1.7	26.5	49.5	51.3	41.5	218.5	31.3	291.3
April	4.1	4.3	6.7	18.9	1.6	27.2	49.3	51.2	41.7	224.7	35.6	302.0
May	4.1	4.2	6.6	19.3	1.9	27.8	49.2	51.0	41.9	227.8	38.3	308.0
June	3.9	4.0	6.3	19.9	1.6	27.8	48.7	50.4	40.7	237.9	52.2	330.7
July	4.0	4.1	6.3	20.8	2.5	29.6	47.8	49.7	40.1	236.8	43.8	320.6
August	4.0	4.1	6.1	20.1	2.3	28.5	48.1	50.0	39.7	232.6	45.8	318.1
September	3.9	4.1	6.0	20.0	2.1	28.1	46.8	48.7	38.8	230.7	44.7	314.2
October	3.9	4.0	6.1	19.0	2.2	27.3	46.6	48.5	38.8	227.5	42.7	308.9
November	3.7	3.9	5.9	18.5	2.7	27.0	45.7	47.5	37.4	220.6	41.0	299.0
December	3.7	3.9	6.1	19.2	3.1	28.4	45.6	47.4	37.9	228.9	49.4	316.2
2009	4.0	4.1	6.3	19.1	2.1	27.4	48.0	49.8	39.9	226.1	41.4	307.4

Dash (-) = No data reported.

NA = Not available.

^a Includes sales through retail outlets as well as all direct sales to end users that were not made through company-operated retail outlets, e.g., sales to agricultural customers, commercial sales, and industrial sales.

Notes: Data for the 4th quarter of 1993 were derived from two separate survey systems. The DTW, Rack, and Bulk components were derived from the revised EIA-782 survey system, while the End-Use and Average Resale categories were derived from the predecessor EIA-782 survey system. Therefore, the DTW, Rack, and Bulk components are not consistent with the Average Resale category. Beginning January 1994, all data are from the revised EIA-782 survey system and are consistent.

Note: Motor gasoline averages and totals prior to October 1993 include leaded gasoline.

Note: Totals may not equal the sum of the components due to rounding.

Source: Energy Information Administration Form EIA-782A, "Refiners'/Gas Plant Operators' Monthly Petroleum Product Sales Report."

Table 8. U.S. Refiner Conventional Motor Gasoline Prices by Grade and Sales Type
(Cents per Gallon Excluding Taxes)

Year Month	Regular						Midgrade					
	Sales to End Users		Sales for Resale				Sales to End Users		Sales for Resale			
	Through Retail Outlets	Average ^a	DTW	Rack	Bulk	Average	Through Retail Outlets	Average ^a	DTW	Rack	Bulk	Average
1994	68.7	68.1	63.6	54.5	50.0	55.8	78.4	77.8	69.4	NA	NA	62.7
1995	71.0	70.4	65.1	57.0	52.5	57.3	80.0	79.4	71.1	61.0	NA	63.7
1996	79.7	79.1	74.3	66.5	60.7	66.4	88.4	87.8	80.1	70.0	NA	72.6
1997	78.1	77.5	71.9	64.9	60.0	64.8	87.4	86.9	78.3	68.5	W	70.8
1998	61.1	60.6	55.1	47.3	43.9	47.3	70.4	70.0	61.3	51.1	W	53.3
1999	71.0	70.6	67.6	59.5	52.0	59.0	80.2	79.9	73.4	62.8	-	65.0
2000	104.5	104.0	99.4	91.3	84.4	90.9	113.6	113.3	105.2	94.5	-	96.4
2001	96.1	95.8	91.4	83.5	76.1	83.0	105.8	105.5	98.4	87.2	-	88.9
2002	89.3	89.1	83.6	79.1	72.3	78.2	98.5	98.1	90.6	82.9	-	83.9
2003	108.1	107.8	104.0	95.2	87.1	94.2	117.3	116.8	110.8	99.4	-	100.6
2004	136.8	136.4	132.5	124.4	117.0	123.4	145.4	145.0	139.1	128.7	-	129.6
2005	178.0	177.6	170.9	164.3	155.5	162.9	186.1	185.7	178.1	167.5	-	168.2
2006	206.2	206.0	205.4	192.5	186.4	191.8	216.6	216.4	213.4	197.2	-	198.0
2007												
January	171.3	171.0	176.1	149.5	148.8	150.3	183.3	183.1	180.8	153.3	-	154.8
February	176.8	176.7	174.9	167.4	156.6	165.7	186.7	186.5	181.6	173.6	-	174.0
March	204.5	204.2	204.8	193.3	181.7	191.5	215.2	214.9	211.1	198.8	-	199.4
April	232.3	231.9	232.2	221.9	206.4	219.3	243.7	243.4	238.1	226.2	-	226.8
May	262.0	261.4	256.5	249.3	227.2	244.4	272.3	272.0	262.7	259.7	-	259.8
June	251.5	251.0	243.8	234.0	221.7	231.6	264.3	264.0	250.8	241.0	-	241.4
July	244.5	244.1	232.7	228.5	218.1	226.5	256.4	256.2	242.8	238.9	-	239.0
August	228.4	228.1	216.8	214.3	204.8	212.3	239.7	239.5	227.6	226.0	-	226.1
September	231.9	231.6	220.9	221.4	205.6	217.6	242.4	242.3	229.0	227.1	-	227.2
October	231.0	230.8	227.4	220.9	210.6	218.9	242.7	242.5	233.4	222.6	-	223.0
November	257.7	257.4	250.2	245.0	233.5	242.6	268.9	268.6	256.0	247.0	-	247.4
December	249.8	249.5	243.1	232.6	227.5	231.7	261.1	260.9	250.0	234.3	-	235.0
2007	229.2	228.9	224.2	215.3	206.5	213.8	239.2	239.0	229.8	222.2	-	222.5
2008												
January	253.2	252.8	243.4	237.3	235.0	237.0	263.9	263.7	250.0	239.0	-	239.5
February	253.9	253.5	246.6	243.6	233.8	241.6	265.0	264.8	254.0	244.7	-	245.1
March	273.9	273.5	270.1	262.2	253.5	260.5	285.1	284.8	277.0	262.7	-	263.2
April	292.6	292.4	286.5	284.8	270.0	281.6	303.9	303.8	294.8	286.2	-	286.5
May	327.5	327.3	317.7	317.3	297.0	313.1	337.8	337.7	324.3	318.7	-	318.9
June	349.1	348.9	351.1	337.8	324.5	335.5	360.6	360.5	356.0	335.5	-	336.2
July	349.5	349.3	347.9	330.6	325.3	330.2	362.0	361.8	353.1	330.3	-	331.0
August	321.8	321.6	320.3	306.6	296.4	305.0	335.9	335.8	326.6	309.1	-	309.6
September	320.7	320.6	306.1	300.7	294.9	299.8	330.3	330.3	312.5	299.0	-	299.4
October	245.2	244.8	238.3	207.1	212.6	209.2	260.0	259.8	239.2	209.8	-	210.8
November	153.4	153.4	153.2	133.4	135.5	134.5	167.3	167.6	158.7	136.8	-	137.6
December	117.2	117.4	116.9	102.3	99.8	102.3	129.0	129.2	124.5	108.2	-	108.7
2008	271.7	271.4	269.8	256.0	251.3	255.5	282.9	282.9	273.4	258.1	-	258.6
2009												
January	131.7	131.8	128.9	122.9	108.7	120.5	140.9	141.0	139.7	129.2	-	129.6
February	141.2	140.8	143.3	129.1	119.1	127.9	153.0	152.9	150.8	131.8	-	132.5
March	145.9	145.5	145.0	137.2	124.7	135.6	157.0	157.0	153.5	140.8	-	141.2
April	154.2	153.7	154.4	144.9	136.1	143.7	166.2	166.1	160.7	146.7	-	147.2
May	181.1	180.7	176.8	175.4	158.2	172.4	191.4	191.3	185.3	177.8	-	178.0
June	212.9	212.4	208.7	200.2	187.6	197.6	223.4	223.4	215.5	203.0	-	203.4
July	199.1	198.4	197.7	182.4	173.2	181.2	212.4	212.5	203.3	183.9	-	184.5
August	207.3	206.9	210.2	198.6	188.3	197.0	220.2	220.3	216.7	199.3	-	199.8
September	197.2	196.8	209.0	184.7	181.7	184.9	211.0	210.9	214.4	185.1	-	185.9
October	202.5	202.3	200.7	195.5	180.5	192.8	213.7	213.7	208.9	198.3	-	198.6
November	210.8	210.4	210.4	201.0	196.9	200.6	223.8	223.7	216.5	204.1	-	204.4
December	208.4	208.0	206.2	196.7	191.6	195.9	220.3	220.3	212.4	199.8	-	200.2
2009	182.5	182.1	181.7	173.5	165.7	172.3	193.6	193.6	187.7	175.1	-	175.5

See footnotes at end of table.

Table 8. U.S. Refiner Conventional Motor Gasoline Prices by Grade and Sales Type
(Cents per Gallon Excluding Taxes) — Continued

Year Month	Premium						All Grades					
	Sales to End Users		Sales for Resale				Sales to End Users		Sales for Resale			
	Through Retail Outlets	Average ^a	DTW	Rack	Bulk	Average	Through Retail Outlets	Average ^a	DTW	Rack	Bulk	Average
1994	86.3	85.5	77.8	63.8	55.5	68.2	73.6	72.9	68.3	56.5	50.7	58.9
1995	87.7	86.8	79.0	66.5	56.8	68.4	75.3	74.6	69.3	59.0	53.0	59.8
1996	96.0	95.1	86.9	75.5	64.5	76.7	83.4	82.7	77.8	68.2	61.0	68.5
1997	95.4	94.6	85.6	74.2	64.1	75.3	81.9	81.3	75.6	66.6	60.4	66.8
1998	78.3	77.6	68.4	W	47.4	57.6	65.2	64.7	58.9	49.1	44.2	49.4
1999	87.2	86.5	80.1	67.9	55.8	68.1	74.8	74.3	71.1	61.1	52.5	60.9
2000	121.1	120.1	112.0	100.2	89.7	100.5	107.6	107.1	102.3	92.6	84.9	92.5
2001	112.9	112.3	104.2	92.2	80.6	92.3	99.2	98.9	94.3	84.8	76.5	84.5
2002	106.4	105.8	97.8	88.9	78.8	88.6	92.4	92.1	86.7	80.6	72.9	79.8
2003	125.3	124.5	117.8	105.1	92.5	105.0	110.9	110.5	106.7	96.5	87.4	95.7
2004	154.4	153.4	146.6	134.7	124.8	134.8	139.1	138.7	134.8	125.7	117.4	124.7
2005	196.6	195.4	185.7	174.7	165.2	174.6	180.1	179.7	173.2	165.4	156.0	164.1
2006	227.4	226.5	221.5	207.0	198.1	207.1	208.4	208.2	207.7	194.0	186.9	193.3
2007												
January	195.0	194.5	193.7	165.4	154.2	165.4	173.7	173.5	178.6	151.0	149.2	151.8
February	197.3	197.0	191.8	182.1	165.2	180.9	179.0	178.8	177.5	169.0	157.0	167.3
March	226.5	225.8	221.5	210.5	203.6	210.5	206.7	206.4	207.3	195.1	182.8	193.4
April	255.4	254.7	250.1	242.0	233.3	241.2	234.5	234.2	234.7	223.8	208.1	221.3
May	282.4	281.2	273.1	265.8	242.5	263.9	263.9	263.3	258.9	251.2	227.7	246.5
June	274.2	273.2	261.8	253.5	237.8	252.1	253.7	253.3	246.4	236.0	222.4	233.6
July	266.3	265.3	251.4	248.8	237.8	247.9	246.6	246.3	235.6	230.9	218.9	228.8
August	250.3	249.4	235.3	233.7	224.3	233.2	230.6	230.3	219.7	216.7	205.3	214.6
September	253.3	252.5	239.2	240.0	225.0	238.4	234.0	233.8	223.7	223.3	206.3	219.6
October	254.1	253.3	246.1	239.6	226.4	238.9	233.3	233.1	230.0	222.6	211.1	220.6
November	280.5	279.4	268.4	263.2	245.5	261.3	259.8	259.5	252.6	246.5	234.0	244.2
December	273.8	272.8	262.8	250.4	236.7	249.3	252.0	251.7	245.8	234.0	227.9	233.1
2007	250.2	249.4	241.5	232.8	218.1	231.7	231.3	230.9	226.7	217.2	207.0	215.6
2008												
January	276.4	275.2	262.4	255.2	246.2	254.5	255.3	254.9	245.9	238.7	235.5	238.4
February	277.2	276.6	265.5	261.3	243.4	259.7	256.0	255.6	249.2	245.0	234.1	243.0
March	297.5	296.9	289.6	281.9	269.3	281.0	275.9	275.6	272.6	263.6	254.1	261.9
April	316.1	315.6	306.2	303.9	289.8	302.1	294.6	294.4	289.1	286.3	270.9	283.2
May	349.1	348.2	336.0	336.0	319.9	334.3	329.3	329.1	320.0	318.6	297.8	314.7
June	374.4	373.3	371.1	355.6	340.5	354.6	351.0	350.8	353.3	338.8	325.1	336.7
July	375.2	374.3	367.1	349.9	336.5	349.5	351.6	351.3	350.1	331.9	325.8	331.5
August	348.6	347.7	339.7	325.8	315.0	325.7	324.1	323.9	322.7	308.1	297.0	306.5
September	342.2	341.8	325.6	320.6	311.9	320.2	322.6	322.5	308.5	302.0	295.4	301.1
October	274.0	272.9	258.1	228.4	220.5	229.6	247.7	247.3	240.6	208.7	212.9	210.6
November	180.5	180.7	174.0	152.9	142.7	153.4	155.8	155.9	155.9	135.0	135.7	135.9
December	141.7	141.9	136.0	119.9	112.5	120.2	119.5	119.6	119.6	103.9	100.3	103.8
2008	292.8	292.1	285.1	272.6	265.0	272.6	273.6	273.3	271.6	257.3	251.8	256.8
2009												
January	154.0	154.1	148.8	140.1	125.4	139.1	133.6	133.6	131.6	124.6	109.4	122.2
February	166.0	165.4	164.7	148.0	131.9	148.0	143.3	142.9	146.1	130.6	119.6	129.5
March	169.6	169.1	165.5	156.1	139.6	155.1	148.0	147.6	147.8	138.8	125.5	137.3
April	178.7	177.9	174.2	164.5	150.3	163.9	156.4	155.9	157.0	146.5	136.6	145.4
May	203.7	202.9	196.1	194.7	176.5	192.9	183.0	182.6	179.4	177.0	159.0	174.2
June	236.2	235.2	228.2	219.5	203.2	218.7	214.8	214.2	211.2	201.8	188.0	199.3
July	224.2	222.9	217.3	202.0	186.2	200.9	201.3	200.6	200.2	184.0	173.9	182.8
August	232.4	231.3	230.2	218.2	201.9	216.9	209.5	209.1	212.8	200.2	188.9	198.6
September	223.4	222.3	229.5	204.9	191.1	204.8	199.5	199.1	211.6	186.3	182.1	186.4
October	226.7	225.6	220.1	214.0	191.0	211.5	204.5	204.3	203.3	197.0	181.0	194.4
November	236.7	235.5	230.2	219.8	203.8	217.8	212.9	212.5	212.8	202.6	197.4	202.0
December	234.1	232.7	226.3	214.9	198.8	212.7	210.5	210.1	208.8	198.3	192.0	197.3
2009	206.2	205.4	201.4	192.7	180.2	191.8	184.5	184.1	184.3	175.0	166.4	173.8

Dash (-) = No data reported.

NA = Not available.

W = Withheld to avoid disclosure of individual company data.

^a Includes sales through retail outlets as well as all direct sales to end users that were not made through company-operated retail outlets, e.g., sales to agricultural customers, commercial sales, and industrial sales.

Notes: The 4th quarter of 1993 was a transitional period between the predecessor EIA-782 survey system and the revised EIA-782 survey system. The revised survey system contains additional product and sales categories, which may not be consistent with categories derived from the predecessor survey system. Beginning January 1994 all data are from the revised survey system and are consistent.

Note: Beginning January 2007, oxygenated gasoline is included in conventional gasoline.

Source: Energy Information Administration Form EIA-782A, "Refiners'/Gas Plant Operators' Monthly Petroleum Product Sales Report."

Table 9. U.S. Refiner Conventional Motor Gasoline Volumes by Grade and Sales Type
(Million Gallons per Day)

Year Month	Regular						Midgrade					
	Sales to End Users		Sales for Resale				Sales to End Users		Sales for Resale			
	Through Retail Outlets	Total ^a	DTW	Rack	Bulk	Total	Through Retail Outlets	Total ^a	DTW	Rack	Bulk	Total
1994	29.7	31.2	36.1	113.5	22.8	172.4	7.6	7.8	10.1	14.6	0.1	24.8
1995	24.0	25.3	19.4	105.1	26.0	150.5	6.0	6.3	5.1	13.6	0.1	18.7
1996	24.1	25.4	17.8	108.5	27.1	153.4	5.7	5.9	4.4	12.9	NA	17.3
1997	25.0	26.4	16.4	110.9	26.4	153.7	5.7	5.9	3.9	12.7	W	16.6
1998	25.4	26.6	13.7	112.0	28.8	154.5	6.0	6.1	3.4	12.5	W	15.8
1999	25.0	26.0	13.4	117.4	24.9	155.8	5.9	6.0	3.1	12.2	-	15.3
2000	26.0	27.1	12.8	125.7	23.9	162.4	4.9	5.0	2.3	10.8	-	13.1
2001	26.6	27.4	12.0	128.5	24.0	164.5	4.6	4.7	1.9	10.2	-	12.0
2002	27.2	28.0	11.3	127.9	31.0	170.2	4.7	4.8	1.6	10.4	-	11.9
2003	27.5	28.3	10.3	131.1	32.4	173.8	4.3	4.4	1.2	10.0	-	11.2
2004	26.5	27.3	9.7	136.7	36.1	182.5	3.5	3.6	0.9	9.8	-	10.8
2005	27.4	28.3	9.0	140.1	36.4	185.5	3.1	3.2	0.7	10.8	-	11.5
2006	28.9	29.8	7.3	143.7	37.4	188.4	2.9	2.9	0.5	9.3	-	9.7
2007												
January	27.8	28.4	6.8	143.1	33.2	183.1	2.6	2.6	0.5	8.9	-	9.4
February	29.0	29.7	7.1	149.5	36.3	192.9	2.7	2.8	0.5	10.0	-	10.6
March	29.3	29.9	7.2	152.7	37.3	197.2	2.7	2.7	0.5	9.5	-	10.0
April	29.8	30.4	7.5	152.0	39.2	198.8	2.6	2.6	0.5	10.0	-	10.5
May	30.4	31.1	7.6	153.3	48.8	209.7	2.5	2.5	0.5	10.1	-	10.5
June	31.1	31.7	7.4	152.3	45.9	205.6	2.5	2.6	0.5	10.6	-	11.1
July	30.5	31.0	7.3	152.7	42.2	202.2	2.5	2.6	0.5	10.8	-	11.3
August	31.0	31.7	7.3	155.6	44.6	207.6	2.6	2.7	0.5	11.1	-	11.6
September	29.6	30.2	7.2	146.7	48.6	202.4	2.5	2.6	0.5	10.3	-	10.8
October	29.6	30.1	7.7	150.9	44.6	203.1	2.6	2.6	0.5	11.0	-	11.5
November	29.3	29.8	7.7	148.9	44.2	200.8	2.4	2.4	0.5	10.9	-	11.3
December	28.1	28.6	7.5	145.8	50.6	203.9	2.4	2.4	0.5	10.7	-	11.1
2007	29.6	30.2	7.4	150.3	43.0	200.7	2.6	2.6	0.5	10.3	-	10.8
2008												
January	27.5	28.2	7.2	139.7	39.7	186.6	2.3	2.3	0.4	10.5	-	11.0
February	28.5	29.4	7.5	142.6	42.5	192.6	2.4	2.4	0.4	11.2	-	11.6
March	28.5	29.1	7.6	142.8	46.0	196.4	2.3	2.3	0.4	10.4	-	10.8
April	28.9	29.8	7.7	147.6	44.1	199.4	2.2	2.3	0.4	10.2	-	10.6
May	29.4	30.2	7.5	148.9	40.5	196.9	2.1	2.2	0.4	9.9	-	10.3
June	29.5	30.3	7.3	148.8	41.4	197.5	2.0	2.1	0.3	9.9	-	10.2
July	29.3	30.0	7.2	146.3	37.5	191.1	2.0	2.0	0.3	9.9	-	10.2
August	29.7	30.5	7.0	147.9	41.6	196.5	2.1	2.1	0.3	9.5	-	9.9
September	28.0	28.8	6.7	138.3	35.6	180.6	2.0	2.0	0.3	9.6	-	9.9
October	30.0	31.0	6.6	145.7	37.1	189.4	2.0	2.0	0.3	9.5	-	9.8
November	29.4	30.3	6.4	142.0	31.9	180.4	2.1	2.1	0.3	9.0	-	9.3
December	28.8	29.7	6.1	143.5	36.3	185.9	2.1	2.1	0.3	9.3	-	9.7
2008	28.9	29.8	7.1	144.5	39.5	191.1	2.1	2.2	0.4	9.9	-	10.3
2009												
January	26.9	28.3	6.6	134.0	33.0	173.6	2.0	2.0	0.3	8.8	-	9.1
February	27.2	28.6	7.0	142.0	30.8	179.8	1.9	2.0	0.3	9.2	-	9.5
March	27.0	28.4	6.9	142.2	27.3	176.4	1.9	2.0	0.3	8.9	-	9.3
April	27.0	28.5	7.0	145.9	30.9	183.7	1.9	1.9	0.3	9.7	-	10.0
May	26.9	28.2	7.0	148.9	33.5	189.4	1.9	1.9	0.3	9.6	-	10.0
June	27.0	28.3	6.7	155.3	46.8	208.8	1.8	1.9	0.3	9.6	-	9.9
July	26.5	27.8	6.7	155.1	37.2	199.0	1.8	1.9	0.3	9.5	-	9.8
August	26.6	27.9	6.7	151.6	39.3	197.6	1.8	1.9	0.3	9.4	-	9.7
September	26.0	27.3	6.4	148.7	37.5	192.6	1.8	1.8	0.3	9.0	-	9.2
October	25.9	27.3	6.2	147.9	36.5	190.7	1.8	1.8	0.3	8.6	-	8.9
November	25.5	26.9	5.8	143.4	34.8	184.0	1.7	1.8	0.2	8.4	-	8.6
December	25.4	26.8	5.9	148.4	43.1	197.4	1.8	1.8	0.2	8.7	-	8.9
2009	26.5	27.8	6.6	147.0	35.9	189.5	1.9	1.9	0.3	9.1	-	9.4

See footnotes at end of table.

Table 9. U.S. Refiner Conventional Motor Gasoline Volumes by Grade and Sales Type
(Million Gallons per Day) — Continued

Year Month	Premium						All Grades					
	Sales to End Users		Sales for Resale				Sales to End Users		Sales for Resale			
	Through Retail Outlets	Total ^a	DTW	Rack	Bulk	Total	Through Retail Outlets	Total ^a	DTW	Rack	Bulk	Total
1994	8.5	8.9	16.5	28.0	2.8	47.2	45.8	47.9	62.7	156.0	25.8	244.5
1995	6.2	6.4	7.7	25.1	2.9	35.6	36.2	38.0	32.1	143.8	28.9	204.8
1996	4.9	5.1	5.8	22.5	2.5	30.8	34.7	36.5	28.1	143.8	29.6	201.5
1997	4.8	5.0	5.1	21.9	2.5	29.5	35.4	37.2	25.4	145.6	28.9	199.8
1998	5.5	5.7	4.7	W	2.7	31.9	36.9	38.5	21.8	148.9	31.5	202.2
1999	5.0	5.2	4.3	24.1	3.8	32.2	35.9	37.2	20.8	153.7	28.7	203.3
2000	3.7	3.9	3.1	18.6	2.8	24.5	34.7	35.9	18.2	155.1	26.7	200.0
2001	3.7	3.8	2.8	18.7	2.7	24.1	35.0	36.0	16.7	157.4	26.7	200.7
2002	3.8	4.0	2.6	19.1	3.0	24.7	35.8	36.8	15.5	157.4	34.0	206.9
2003	3.4	3.5	2.1	17.5	2.4	21.9	35.1	36.3	13.6	158.6	34.8	207.0
2004	2.6	2.8	1.6	15.8	1.7	19.2	32.6	33.7	12.3	162.3	37.8	212.4
2005	2.3	2.4	1.4	14.4	1.9	17.7	32.8	33.8	11.0	165.4	38.2	214.6
2006	2.1	2.2	1.1	13.9	1.7	16.6	33.9	35.0	8.8	166.8	39.1	214.7
2007												
January	2.1	2.2	1.1	14.0	2.6	17.7	32.5	33.2	8.4	166.0	35.8	210.1
February	2.2	2.3	1.2	14.6	2.0	17.8	33.9	34.7	8.8	174.2	38.3	221.3
March	2.2	2.2	1.1	14.9	1.8	17.9	34.1	34.9	8.9	177.1	39.1	225.0
April	2.1	2.1	1.1	14.2	2.7	18.0	34.5	35.2	9.1	176.2	41.9	227.2
May	2.0	2.0	1.1	14.5	1.8	17.4	34.9	35.7	9.2	177.8	50.6	237.7
June	2.1	2.2	1.1	14.4	2.2	17.7	35.8	36.5	9.0	177.3	48.0	234.3
July	2.1	2.2	1.1	15.1	1.7	17.9	35.1	35.8	8.8	178.6	44.0	231.4
August	2.3	2.4	1.2	16.1	1.2	18.4	36.0	36.7	9.0	182.8	45.8	237.6
September	2.2	2.2	1.1	14.4	1.8	17.4	34.3	35.0	8.8	171.4	50.4	230.6
October	2.1	2.2	1.2	14.6	1.5	17.2	34.3	34.9	9.3	176.5	46.1	231.9
November	1.9	2.0	1.1	12.9	2.0	16.0	33.6	34.2	9.2	172.7	46.2	228.1
December	1.9	1.9	1.1	12.6	2.3	16.0	32.4	32.9	9.1	169.1	52.9	231.1
2007	2.1	2.2	1.1	14.4	2.0	17.4	34.3	35.0	9.0	175.0	44.9	228.9
2008												
January	1.8	1.9	1.0	11.8	1.8	14.7	31.6	32.4	8.7	162.1	41.5	212.2
February	1.9	2.0	1.1	12.4	1.6	15.1	32.8	33.8	9.0	166.2	44.0	219.3
March	1.8	1.9	1.0	11.8	1.6	14.4	32.5	33.3	9.0	165.0	47.6	221.6
April	1.8	1.8	1.0	11.8	2.1	14.9	32.9	33.8	9.1	169.6	46.2	225.0
May	1.7	1.8	0.9	11.4	1.4	13.8	33.2	34.1	8.8	170.2	42.0	221.0
June	1.6	1.7	0.9	11.3	1.9	14.0	33.1	34.1	8.6	170.0	43.2	221.8
July	1.6	1.8	0.9	11.3	1.5	13.8	32.9	33.9	8.4	167.6	39.1	215.1
August	1.8	1.9	0.9	11.7	1.3	13.9	33.6	34.5	8.3	169.2	42.9	220.3
September	1.9	2.1	0.9	11.2	1.0	13.1	31.9	32.9	7.9	159.1	36.6	203.6
October	1.8	2.0	0.9	11.9	1.1	13.9	33.8	35.0	7.7	167.1	38.2	213.0
November	1.9	2.1	0.9	11.7	1.1	13.8	33.4	34.5	7.6	162.7	33.1	203.4
December	2.0	2.1	0.9	12.5	1.6	15.0	32.9	33.9	7.4	165.3	37.9	210.6
2008	1.8	1.9	0.9	11.7	1.5	14.2	32.9	33.9	8.4	166.2	41.0	215.6
2009												
January	1.8	1.9	0.9	11.4	1.5	13.8	30.7	32.1	7.8	154.2	34.5	196.6
February	1.7	1.8	1.0	12.1	1.1	14.1	30.9	32.4	8.3	163.3	31.8	203.4
March	1.8	1.9	1.0	12.4	1.4	14.8	30.7	32.3	8.2	163.5	28.7	200.4
April	1.8	1.9	1.0	12.9	1.3	15.3	30.7	32.3	8.3	168.5	32.2	209.0
May	1.7	1.8	1.0	13.2	1.6	15.8	30.5	31.9	8.3	171.7	35.2	215.2
June	1.6	1.7	0.9	13.6	1.2	15.8	30.5	31.9	7.9	178.5	48.1	234.5
July	1.7	1.8	1.0	14.5	2.1	17.6	30.0	31.5	8.0	179.1	39.3	226.4
August	1.7	1.8	0.9	13.8	1.9	16.7	30.1	31.6	7.9	174.8	41.2	224.0
September	1.7	1.8	0.9	13.4	1.7	16.0	29.4	30.9	7.5	171.1	39.2	217.8
October	1.6	1.7	0.9	12.7	1.9	15.5	29.3	30.8	7.3	169.2	38.5	215.0
November	1.6	1.7	0.8	12.3	2.5	15.5	28.8	30.3	6.8	164.0	37.3	208.1
December	1.6	1.7	0.8	12.8	2.8	16.4	28.7	30.3	6.9	169.8	45.9	222.7
2009	1.7	1.8	0.9	12.9	1.8	15.6	30.0	31.5	7.8	169.0	37.7	214.5

Dash (-) = No data reported.

NA = Not available.

W = Withheld to avoid disclosure of individual company data.

^a Includes sales through retail outlets as well as all direct sales to end users that were not made through company-operated retail outlets, e.g., sales to agricultural customers, commercial sales, and industrial sales.

Notes: The 4th quarter of 1993 was a transitional period between the predecessor EIA-782 survey system and the revised EIA-782 survey system. The revised survey system contains additional product and sales categories, which may not be consistent with categories derived from the predecessor survey system. Beginning January 1994 all data are from the revised survey system and are consistent.

Note: Beginning January 2007, oxygenated gasoline is included in conventional gasoline.

Note: Totals may not equal the sum of the components due to rounding.

Source: Energy Information Administration Form EIA-782A, "Refiners'/Gas Plant Operators' Monthly Petroleum Product Sales Report."

Table 10. U.S. Refiner Reformulated Motor Gasoline Prices by Grade and Sales Type
(Cents per Gallon Excluding Taxes)

Year Month	Regular						Midgrade					
	Sales to End Users		Sales for Resale				Sales to End Users		Sales for Resale			
	Through Retail Outlets	Average ^a	DTW	Rack	Bulk	Average	Through Retail Outlets	Average ^a	DTW	Rack	Bulk	Average
1994	76.4	75.8	72.0	56.9	54.3	63.8	87.9	87.3	77.0	62.8	W	72.8
1995	74.9	74.4	70.7	60.5	57.3	65.0	83.6	83.3	75.3	65.1	-	72.3
1996	83.4	83.0	78.8	69.8	67.7	73.8	92.4	92.1	83.7	74.1	W	80.9
1997	83.0	82.8	78.7	68.2	66.8	73.1	92.8	92.5	84.0	72.5	W	80.7
1998	66.8	66.5	61.6	50.9	48.4	55.7	76.9	76.7	67.3	55.3	W	63.8
1999	80.4	80.0	75.2	64.2	60.1	68.6	89.5	89.2	80.7	67.6	NA	76.7
2000	112.6	112.3	105.8	97.8	95.3	101.2	121.9	121.7	111.4	101.4	-	108.5
2001	105.9	105.6	100.1	89.3	85.6	93.8	116.6	116.3	106.1	94.2	-	102.7
2002	94.6	94.4	90.6	83.4	77.9	86.1	105.2	105.0	98.8	87.5	-	95.8
2003	119.6	119.2	116.8	100.6	96.2	106.9	129.3	129.0	122.4	104.7	-	116.5
2004	147.2	147.0	144.7	129.9	124.8	135.3	157.2	157.0	149.4	134.0	-	143.6
2005	185.0	184.8	178.7	168.2	161.9	171.1	194.5	194.4	183.4	172.6	-	178.9
2006	216.6	216.4	209.7	200.2	188.5	203.0	227.5	227.4	217.0	207.8	-	212.9
2007												
January	183.4	183.2	180.3	159.2	147.1	166.4	197.3	197.2	187.8	166.7	-	178.3
February	188.4	188.3	185.1	176.7	169.1	179.7	202.4	202.4	193.3	184.6	-	189.4
March	221.1	220.9	221.1	206.6	199.4	211.6	235.0	234.9	229.3	214.3	-	222.4
April	246.5	246.3	243.8	232.4	224.9	236.0	260.0	259.9	253.4	242.4	-	248.4
May	268.9	268.7	260.7	252.6	235.2	254.3	281.7	281.6	270.7	260.6	-	266.0
June	258.5	258.2	248.5	234.9	229.3	239.1	272.1	272.0	258.6	243.5	-	251.5
July	248.6	248.3	237.7	230.0	228.0	232.5	261.6	261.5	247.2	238.6	-	243.1
August	230.4	230.1	217.2	211.9	208.6	213.5	243.2	243.2	226.2	220.2	-	223.3
September	229.5	229.3	217.9	215.9	212.3	216.3	242.6	242.5	227.7	223.8	-	225.9
October	233.4	233.2	227.2	219.2	215.4	221.8	247.8	247.7	237.3	226.7	-	232.4
November	260.3	260.0	253.7	243.4	242.0	246.9	273.8	273.8	262.9	250.6	-	257.2
December	256.2	256.0	249.2	234.9	233.0	239.8	270.2	270.1	257.9	241.4	-	250.2
2007	236.2	236.0	228.8	218.6	217.5	222.1	249.0	248.9	236.8	225.6	-	231.6
2008												
January	256.3	256.1	247.1	235.8	236.1	239.6	269.6	269.5	255.7	243.3	-	249.8
February	254.2	254.0	244.0	242.1	239.2	242.6	267.1	267.1	252.4	250.1	-	251.3
March	278.6	278.4	272.1	263.9	257.4	266.3	291.8	291.7	282.6	273.7	-	278.3
April	301.0	300.8	292.5	289.7	287.4	290.5	314.1	314.0	303.3	298.1	-	300.8
May	332.3	332.1	319.7	321.5	321.6	320.9	344.1	344.1	328.8	329.0	-	328.9
June	365.6	365.4	360.3	346.4	348.1	351.1	379.3	379.2	369.8	352.9	-	361.4
July	362.1	361.8	355.3	332.6	335.2	340.1	376.0	375.9	364.8	340.0	-	351.9
August	330.4	330.2	319.7	303.2	304.2	308.4	345.9	345.8	329.2	310.8	-	319.6
September	314.2	314.1	299.2	293.2	287.2	294.8	326.8	326.7	309.1	303.5	-	306.4
October	260.6	260.0	250.3	207.6	211.0	221.0	276.3	276.2	262.6	217.8	-	240.2
November	167.2	167.0	160.6	135.6	143.5	143.7	183.2	183.2	170.8	143.7	-	157.2
December	121.1	121.1	114.2	105.8	105.8	108.5	134.9	134.9	123.1	113.9	-	118.5
2008	281.2	281.0	270.3	255.3	264.2	260.7	293.4	293.4	278.8	265.2	-	272.1
2009												
January	135.3	135.4	129.2	126.8	117.5	127.3	148.1	148.1	139.1	135.0	-	137.1
February	149.6	149.5	147.1	134.9	127.4	138.8	163.2	163.2	157.2	143.0	-	150.2
March	150.7	150.7	145.8	140.9	133.6	142.4	163.8	163.8	155.9	149.1	-	152.5
April	163.2	163.1	156.0	149.9	147.6	151.9	176.8	176.8	167.2	157.9	-	162.5
May	186.9	186.7	178.3	178.8	178.1	178.6	199.5	199.5	189.2	186.6	-	187.8
June	222.7	222.3	215.0	202.7	200.9	206.6	235.6	235.6	225.1	210.3	-	217.1
July	212.9	212.4	206.4	186.5	185.4	192.9	228.4	228.3	217.2	194.5	-	204.8
August	222.8	222.5	218.8	204.9	204.8	209.3	237.9	237.8	230.5	211.4	-	220.0
September	220.7	220.2	220.7	190.3	190.1	199.6	236.7	236.6	233.5	197.5	-	213.7
October	216.7	216.4	213.3	197.1	188.2	201.8	232.6	232.6	227.1	205.0	-	215.1
November	221.4	221.0	215.1	201.0	196.7	205.3	236.0	235.9	226.5	208.8	-	216.9
December	217.7	217.6	212.1	199.4	193.4	203.1	232.6	232.5	223.4	207.1	-	214.1
2009	192.7	192.5	187.8	177.0	178.2	180.6	206.6	206.6	198.1	185.5	-	191.4

See footnotes at end of table.

Table 10. U.S. Refiner Reformulated Motor Gasoline Prices by Grade and Sales Type
(Cents per Gallon Excluding Taxes) — Continued

Year Month	Premium						All Grades					
	Sales to End Users		Sales for Resale				Sales to End Users		Sales for Resale			
	Through Retail Outlets	Average ^a	DTW	Rack	Bulk	Average	Through Retail Outlets	Average ^a	DTW	Rack	Bulk	Average
1994	96.6	95.8	86.1	67.7	55.8	77.7	83.1	82.4	77.1	59.9	54.7	68.7
1995	92.9	92.4	84.1	70.4	61.6	78.5	80.8	80.3	75.6	63.2	58.2	69.6
1996	100.2	99.8	91.0	79.1	70.9	85.9	88.2	87.8	82.8	72.0	68.2	77.4
1997	100.5	100.3	91.0	77.5	68.6	85.3	87.6	87.4	82.5	70.3	67.1	76.7
1998	84.7	84.5	74.1	W	51.6	68.0	71.7	71.4	65.7	52.9	48.9	59.3
1999	96.6	96.3	87.0	71.7	63.9	79.8	84.5	84.1	78.8	65.8	60.8	71.8
2000	129.7	129.1	118.9	106.4	97.2	112.5	116.4	116.0	109.2	99.3	95.7	103.9
2001	123.9	123.4	113.3	98.3	89.0	106.5	110.0	109.6	103.4	90.9	85.9	96.6
2002	112.4	111.9	104.6	93.0	83.2	99.1	98.7	98.5	94.4	85.1	78.5	89.1
2003	136.6	136.2	129.2	109.9	102.8	120.1	123.3	122.9	119.7	102.1	96.9	109.7
2004	165.5	165.2	157.4	139.9	134.8	148.9	151.0	150.7	147.4	131.3	125.7	137.8
2005	203.1	202.9	191.2	179.1	176.6	184.7	188.3	188.1	181.2	169.7	163.5	173.3
2006	236.9	236.7	223.9	214.9	200.4	218.3	220.2	220.0	212.5	202.0	190.6	205.5
2007												
January	208.3	208.2	197.6	176.3	172.4	186.8	188.0	187.8	183.7	161.4	148.7	169.6
February	212.7	212.5	202.8	194.0	193.9	198.4	192.9	192.7	188.6	179.0	171.3	182.6
March	245.2	245.2	238.9	225.7	219.7	232.1	225.4	225.2	224.4	209.0	200.6	214.7
April	270.0	269.8	262.2	253.1	231.4	256.1	250.7	250.5	247.3	234.9	225.8	239.1
May	292.0	291.8	279.4	270.7	257.3	274.4	272.8	272.6	264.2	254.8	237.1	257.2
June	283.4	283.2	267.7	255.2	237.2	259.2	262.7	262.5	252.2	237.3	230.9	242.2
July	273.3	273.1	256.9	250.3	247.6	253.4	252.9	252.6	241.4	232.5	229.1	235.6
August	255.4	255.1	236.1	232.3	220.0	233.8	234.8	234.5	220.9	214.4	209.5	216.5
September	254.0	253.8	237.1	234.8	229.8	235.7	233.9	233.7	221.7	218.3	213.6	219.3
October	259.0	258.8	246.5	238.6	238.5	242.4	238.0	237.8	230.9	221.6	217.7	224.9
November	285.4	285.2	272.9	260.9	256.1	266.7	264.5	264.3	257.3	245.4	243.0	249.7
December	282.5	282.2	268.3	251.2	244.7	259.3	260.7	260.5	252.8	236.8	234.1	242.6
2007	260.1	259.9	246.8	236.7	234.6	241.5	240.4	240.2	232.2	220.8	219.2	225.0
2008												
January	281.3	281.1	265.8	252.0	241.6	258.4	260.5	260.4	250.5	237.6	236.5	242.2
February	278.5	278.4	262.7	258.8	253.8	260.5	258.3	258.2	247.4	244.0	240.4	245.1
March	302.6	302.4	291.4	283.4	277.6	287.0	282.6	282.4	275.6	266.0	259.4	269.1
April	323.8	323.6	311.6	308.0	306.0	309.6	304.7	304.5	295.9	291.6	289.1	293.0
May	355.1	354.9	338.0	339.0	336.6	338.4	335.7	335.5	322.8	323.3	323.2	323.1
June	389.9	389.7	379.1	364.1	362.3	370.8	369.3	369.1	363.3	348.1	349.9	353.5
July	387.0	386.8	374.2	350.2	342.4	360.8	365.9	365.7	358.4	334.4	335.8	342.7
August	356.9	356.7	338.6	321.5	315.0	328.9	334.8	334.5	323.0	305.1	304.9	311.0
September	335.2	335.1	316.9	314.3	312.0	315.4	317.9	317.8	302.3	295.5	289.9	297.5
October	287.8	287.3	269.4	229.6	229.0	247.1	265.3	264.7	253.8	210.0	212.6	224.6
November	194.9	194.6	179.5	155.2	148.0	166.0	172.2	172.0	164.1	137.8	143.8	146.8
December	147.2	147.1	132.8	124.9	113.4	128.2	125.8	125.8	117.8	108.1	106.6	111.3
2008	300.3	300.1	284.5	270.0	282.6	277.2	284.5	284.3	272.8	256.9	265.9	262.9
2009												
January	158.5	158.4	147.5	146.0	134.8	146.5	139.3	139.4	132.5	129.0	119.3	130.0
February	174.0	173.8	165.5	155.2	140.4	159.7	153.9	153.7	150.4	137.1	128.7	141.7
March	174.4	174.3	164.1	160.1	144.0	161.7	155.0	154.9	149.2	143.1	134.6	145.1
April	187.0	186.7	174.9	169.3	163.6	171.9	167.5	167.3	159.6	152.1	148.9	154.7
May	209.5	209.3	197.1	197.8	193.9	197.4	190.9	190.7	181.8	181.0	179.6	181.3
June	246.1	245.8	234.0	222.2	215.7	227.3	226.7	226.3	218.4	205.0	202.2	209.4
July	238.6	238.1	225.8	206.8	202.2	215.1	217.7	217.1	210.0	188.9	186.8	196.0
August	247.9	247.6	238.2	224.7	221.0	230.5	227.4	227.0	222.3	207.2	206.1	212.2
September	247.5	246.9	239.8	210.6	204.1	222.8	225.7	225.1	224.3	192.6	191.3	202.8
October	243.0	242.6	233.1	216.1	204.9	223.3	221.6	221.2	217.0	199.3	189.3	204.8
November	246.4	246.1	234.2	219.3	207.4	225.6	226.0	225.7	218.6	203.2	197.4	208.1
December	242.8	242.5	231.1	217.7	201.1	223.2	222.3	222.1	215.7	201.5	194.0	205.9
2009	217.7	217.4	206.7	196.8	189.9	201.1	197.1	196.9	191.3	179.3	179.1	183.4

Dash (-) = No data reported.

NA = Not available.

W = Withheld to avoid disclosure of individual company data.

^a Includes sales through retail outlets as well as all direct sales to end users that were not made through company-operated retail outlets, e.g., sales to agricultural customers, commercial sales, and industrial sales.

Source: Energy Information Administration Form EIA-782A, "Refiners'/Gas Plant Operators' Monthly Petroleum Product Sales Report."

Table 11. U.S. Refiner Reformulated Motor Gasoline Volumes by Grade and Sales Type
(Million Gallons per Day)

Year Month	Regular						Midgrade					
	Sales to End Users		Sales for Resale				Sales to End Users		Sales for Resale			
	Through Retail Outlets	Total ^a	DTW	Rack	Bulk	Total	Through Retail Outlets	Total ^a	DTW	Rack	Bulk	Total
1994	0.6	0.6	2.1	1.6	0.6	4.3	0.2	0.2	0.7	0.3	W	1.0
1995	7.8	8.1	20.7	W	W	43.3	3.0	3.1	7.4	3.1	-	10.5
1996	10.7	11.1	26.1	20.5	8.0	54.6	3.3	3.4	7.9	3.3	W	11.3
1997	13.4	13.8	28.0	21.7	7.6	57.3	3.6	3.7	7.9	3.1	W	11.0
1998	14.3	14.5	28.6	23.0	8.3	59.9	3.7	3.8	7.4	3.1	W	10.5
1999	14.5	14.8	29.8	26.1	9.6	65.5	3.6	3.7	7.0	3.1	NA	10.2
2000	15.5	15.9	32.1	29.1	8.5	69.6	3.3	3.4	6.2	2.6	-	8.8
2001	16.3	16.7	32.7	30.0	9.0	71.7	3.3	3.3	5.7	2.2	-	7.9
2002	16.9	17.2	33.1	30.4	8.2	71.7	3.3	3.3	5.6	2.1	-	7.6
2003	17.7	18.0	30.9	35.1	7.6	73.6	3.1	3.1	4.1	2.0	-	6.1
2004	16.2	16.5	29.5	39.7	6.1	75.3	2.6	2.6	3.3	2.0	-	5.2
2005	17.1	17.4	27.5	43.5	9.5	80.4	2.6	2.6	2.5	1.8	-	4.2
2006	17.7	18.0	26.8	45.7	3.4	75.9	2.5	2.5	1.9	1.5	-	3.4
2007												
January	16.3	16.5	26.0	44.0	2.4	72.4	2.4	2.4	1.7	1.4	-	3.1
February	16.9	17.1	27.3	44.2	1.8	73.4	2.5	2.5	1.8	1.4	-	3.2
March	17.1	17.4	27.9	45.4	2.8	76.2	2.4	2.4	1.7	1.4	-	3.1
April	17.0	17.3	27.2	44.5	4.4	76.1	2.4	2.4	1.6	1.4	-	3.0
May	17.8	18.1	27.2	45.3	5.2	77.7	2.4	2.4	1.6	1.3	-	2.9
June	18.8	19.1	26.4	47.2	4.6	78.2	2.5	2.5	1.5	1.4	-	2.9
July	17.6	17.9	25.9	44.7	4.7	75.3	2.4	2.4	1.5	1.4	-	2.8
August	17.8	18.1	26.3	46.8	4.3	77.3	2.4	2.5	1.5	1.4	-	2.9
September	17.4	17.7	25.8	44.5	5.0	75.2	2.4	2.4	1.5	1.3	-	2.8
October	17.6	17.8	27.0	45.9	3.5	76.4	2.4	2.4	1.5	1.3	-	2.8
November	17.3	17.5	26.7	45.8	3.8	76.2	2.3	2.3	1.4	1.2	-	2.6
December	16.7	16.9	26.4	46.3	3.6	76.3	2.3	2.3	1.4	1.2	-	2.6
2007	17.4	17.6	26.7	45.4	3.8	75.9	2.4	2.4	1.6	1.3	-	2.9
2008												
January	16.7	16.9	25.3	46.2	3.6	75.1	2.2	2.2	1.3	1.2	-	2.4
February	17.3	17.5	26.3	46.9	3.8	77.0	2.3	2.3	1.3	1.2	-	2.5
March	17.3	17.5	26.6	47.2	4.4	78.2	2.2	2.2	1.3	1.2	-	2.4
April	17.7	17.9	26.5	47.9	4.3	78.6	2.2	2.2	1.2	1.1	-	2.3
May	17.7	17.9	26.3	47.7	4.5	78.5	2.1	2.1	1.1	1.1	-	2.2
June	17.5	17.7	26.1	48.3	4.5	78.9	2.0	2.0	1.1	1.1	-	2.1
July	16.6	16.9	24.5	47.4	4.1	76.0	1.9	1.9	1.0	1.1	-	2.1
August	16.6	16.8	24.4	48.9	6.1	79.4	1.9	1.9	1.0	1.1	-	2.1
September	16.0	16.2	25.0	46.3	4.5	75.8	1.9	1.9	1.0	1.0	-	2.0
October	15.7	16.0	24.7	51.0	4.0	79.7	1.8	1.8	1.0	1.0	-	2.1
November	15.1	15.3	24.2	50.0	3.9	78.1	1.8	1.8	1.0	1.0	-	2.0
December	15.3	15.6	24.9	49.7	2.9	77.5	1.9	1.9	1.1	1.1	-	2.1
2008	16.6	16.9	25.4	48.1	4.2	77.7	2.0	2.0	1.1	1.1	-	2.2
2009												
January	14.6	14.9	25.3	47.2	2.3	74.8	1.7	1.7	1.0	1.0	-	2.0
February	14.4	14.6	26.4	48.7	2.2	77.4	1.7	1.7	1.1	1.0	-	2.1
March	14.6	14.9	26.7	48.0	2.3	77.0	1.8	1.8	1.1	1.0	-	2.1
April	14.5	14.8	26.7	49.1	3.1	78.9	1.7	1.7	1.0	1.1	-	2.1
May	14.7	15.0	26.9	48.9	2.9	78.6	1.7	1.7	1.0	1.1	-	2.1
June	14.3	14.6	26.5	51.9	3.8	82.2	1.6	1.6	1.0	1.1	-	2.1
July	13.8	14.2	25.7	50.1	4.2	80.0	1.6	1.6	1.0	1.2	-	2.2
August	14.0	14.4	25.7	50.3	4.2	80.2	1.6	1.6	1.0	1.2	-	2.2
September	13.5	13.9	25.2	51.9	5.0	82.1	1.6	1.6	1.0	1.2	-	2.1
October	13.5	13.8	25.3	50.8	4.0	80.0	1.6	1.6	0.9	1.1	-	2.1
November	13.1	13.3	24.5	49.3	3.5	77.4	1.6	1.6	0.9	1.1	-	2.0
December	13.1	13.4	24.8	51.5	3.2	79.5	1.6	1.6	0.8	1.1	-	2.0
2009	14.0	14.3	25.8	49.8	3.4	79.0	1.7	1.7	1.0	1.1	-	2.1

See footnotes at end of table.

Table 11. U.S. Refiner Reformulated Motor Gasoline Volumes by Grade and Sales Type
(Million Gallons per Day) — Continued

Year Month	Premium						All Grades					
	Sales to End Users		Sales for Resale				Sales to End Users		Sales for Resale			
	Through Retail Outlets	Total ^a	DTW	Rack	Bulk	Total	Through Retail Outlets	Total ^a	DTW	Rack	Bulk	Total
1994	0.2	0.2	1.2	0.5	0.2	1.9	1.0	1.0	4.0	2.4	0.8	7.2
1995	3.1	3.2	12.0	W	W	18.9	14.0	14.4	40.1	25.9	6.6	72.6
1996	3.1	3.2	11.7	5.3	1.5	18.6	17.0	17.6	45.7	29.2	9.6	84.5
1997	3.4	3.5	11.5	5.3	1.5	18.2	20.3	21.0	47.4	30.1	9.1	86.6
1998	3.8	3.9	12.2	W	1.6	19.8	21.8	22.2	48.2	32.0	9.9	90.1
1999	3.4	3.5	11.4	6.3	1.9	19.6	21.5	22.0	48.2	35.6	11.5	95.2
2000	3.0	3.1	9.6	5.4	1.9	16.8	21.9	22.4	47.9	37.0	10.4	95.2
2001	3.2	3.2	9.2	5.4	1.1	15.7	22.7	23.3	47.7	37.6	10.0	95.3
2002	3.4	3.5	9.5	5.6	1.1	16.3	23.6	24.1	48.2	38.0	9.3	95.6
2003	3.5	3.6	8.5	5.9	1.0	15.3	24.2	24.7	43.5	43.0	8.6	95.1
2004	3.1	3.1	7.4	6.0	0.6	14.1	21.9	22.3	40.2	47.7	6.7	94.6
2005	2.8	2.8	6.5	6.0	1.2	13.6	22.6	22.9	36.4	51.2	10.6	98.3
2006	2.7	2.7	5.9	5.9	0.7	12.5	22.9	23.2	34.6	53.1	4.1	91.8
2007												
January	2.6	2.6	5.9	5.9	0.2	12.0	21.2	21.5	33.6	51.3	2.5	87.5
February	2.6	2.7	6.2	6.0	0.2	12.4	21.9	22.2	35.2	51.7	2.0	89.0
March	2.6	2.6	5.9	5.9	0.2	12.1	22.0	22.4	35.5	52.8	3.0	91.4
April	2.5	2.5	5.8	5.6	0.8	12.1	21.9	22.2	34.6	51.5	5.2	91.3
May	2.5	2.6	5.7	5.7	0.5	11.9	22.7	23.1	34.5	52.3	5.7	92.5
June	2.8	2.8	5.7	5.9	1.1	12.7	24.1	24.4	33.6	54.5	5.7	93.8
July	2.7	2.7	5.7	5.8	0.3	11.8	22.7	23.0	33.1	51.8	5.0	89.9
August	2.8	2.9	5.9	6.1	0.3	12.4	23.1	23.4	33.7	54.3	4.7	92.6
September	2.8	2.8	5.8	6.0	0.4	12.2	22.7	22.9	33.1	51.8	5.4	90.2
October	2.7	2.7	6.0	6.0	0.4	12.4	22.7	22.9	34.5	53.2	3.9	91.6
November	2.5	2.5	5.6	5.5	0.3	11.4	22.1	22.4	33.7	52.6	4.0	90.3
December	2.5	2.5	5.6	5.6	0.3	11.6	21.5	21.7	33.5	53.1	3.9	90.5
2007	2.6	2.7	5.8	5.9	0.4	12.1	22.4	22.7	34.0	52.6	4.3	90.9
2008												
January	2.4	2.5	5.2	5.4	0.3	10.9	21.3	21.6	31.8	52.8	3.9	88.4
February	2.5	2.6	5.5	5.5	0.4	11.4	22.1	22.4	33.1	53.6	4.2	90.9
March	2.4	2.5	5.3	5.3	0.5	11.0	21.9	22.2	33.2	53.6	4.9	91.6
April	2.4	2.4	5.1	5.4	0.4	10.9	22.2	22.5	32.8	54.4	4.7	91.9
May	2.2	2.3	4.8	5.1	0.5	10.4	22.0	22.3	32.2	53.9	5.0	91.2
June	2.2	2.2	4.6	4.8	0.6	10.0	21.6	21.9	31.7	54.2	5.2	91.1
July	2.1	2.2	4.5	5.0	0.4	9.8	20.7	20.9	30.0	53.5	4.5	87.9
August	2.3	2.3	4.6	5.3	0.5	10.4	20.8	21.1	30.1	55.2	6.6	91.9
September	2.4	2.5	4.9	5.0	0.6	10.4	20.3	20.5	30.9	52.3	5.1	88.2
October	2.3	2.4	5.0	5.9	0.4	11.3	19.9	20.2	30.7	57.9	4.4	93.0
November	2.4	2.4	5.2	5.9	0.3	11.4	19.3	19.6	30.4	57.0	4.2	91.5
December	2.6	2.6	5.5	6.2	0.4	12.1	19.8	20.0	31.5	56.9	3.3	91.7
2008	2.4	2.4	5.0	5.4	0.4	10.8	21.0	21.3	31.5	54.6	4.6	90.8
2009												
January	2.3	2.3	5.2	5.6	0.3	11.0	18.6	19.0	31.6	53.7	2.5	87.8
February	2.2	2.3	5.4	5.8	0.2	11.4	18.3	18.6	32.8	55.5	2.5	90.8
March	2.4	2.4	5.6	5.9	0.2	11.7	18.7	19.0	33.3	54.9	2.6	90.8
April	2.4	2.4	5.7	6.0	0.3	11.9	18.6	18.9	33.4	56.2	3.4	92.9
May	2.4	2.4	5.6	6.1	0.3	12.1	18.7	19.1	33.5	56.1	3.2	92.8
June	2.3	2.3	5.3	6.3	0.3	12.0	18.2	18.6	32.8	59.4	4.1	96.2
July	2.3	2.3	5.4	6.3	0.4	12.0	17.8	18.2	32.1	57.6	4.5	94.2
August	2.3	2.3	5.2	6.2	0.4	11.8	17.9	18.3	31.8	57.7	4.6	94.1
September	2.3	2.3	5.2	6.5	0.5	12.1	17.4	17.8	31.3	59.6	5.5	96.4
October	2.2	2.3	5.2	6.3	0.3	11.8	17.3	17.7	31.4	58.2	4.2	93.9
November	2.2	2.2	5.1	6.2	0.2	11.5	16.8	17.1	30.6	56.6	3.7	90.9
December	2.2	2.2	5.3	6.4	0.3	12.0	16.9	17.2	30.9	59.0	3.5	93.4
2009	2.3	2.3	5.3	6.1	0.3	11.8	17.9	18.3	32.1	57.1	3.7	92.9

Dash (-) = No data reported.

NA = Not available.

W = Withheld to avoid disclosure of individual company data.

^a Includes sales through retail outlets as well as all direct sales to end users that were not made through company-operated retail outlets, e.g., sales to agricultural customers, commercial sales, and industrial sales.

Note: Totals may not equal the sum of the components due to rounding.

Source: Energy Information Administration Form EIA-782A, "Refiners'/Gas Plant Operators' Monthly Petroleum Product Sales Report."

Table 12. U.S. Propane (Consumer Grade) Prices by Sales Type
(Cents per Gallon Excluding Taxes)

Year Month	Sales to End Users							Sales for Resale
	Residential Consumers	Commercial/ Institutional Consumers	Industrial Consumers	Through Retail Outlets	Petro- Chemical	Other End Users	Average	
1994	87.2	76.5	65.2	73.6	31.1	63.4	77.6	33.6
1995	86.5	77.7	64.6	74.7	32.4	66.2	76.6	35.4
1996	99.1	88.4	73.3	75.7	41.3	76.4	88.6	47.1
1997	99.6	90.5	77.8	72.6	38.4	74.3	87.8	42.6
1998	88.8	81.6	69.2	67.6	27.0	64.7	77.4	29.7
1999	88.5	80.8	73.4	85.3	34.1	65.9	78.1	35.4
2000	117.3	104.8	99.0	110.4	54.1	90.7	104.8	60.3
2001	128.5	113.5	107.4	119.0	47.8	95.4	109.4	55.6
2002	108.6	92.9	92.4	104.0	39.3	84.0	95.8	44.0
2003	127.4	109.8	108.1	W	55.9	104.9	115.0	61.5
2004	144.3	126.2	122.4	W	71.4	117.6	130.7	76.1
2005	167.5	147.5	146.1	W	85.9	139.6	153.0	93.9
2006	187.7	165.4	164.3	W	99.5	153.3	172.7	104.1
2007								
January	191.7	167.6	167.0	W	90.2	150.0	180.0	100.7
February	192.0	169.6	166.9	W	95.8	150.3	180.4	104.5
March	197.4	171.6	170.3	W	100.5	154.0	181.3	106.1
April	198.4	171.2	172.0	W	108.2	162.8	176.1	108.0
May	203.4	172.9	176.7	W	112.5	200.7	179.4	112.4
June	200.4	173.7	177.1	W	111.9	195.5	179.9	111.0
July	193.6	174.9	179.6	W	115.3	NA	172.3	117.1
August	191.7	175.8	179.6	W	116.8	171.4	177.8	118.0
September	197.4	179.5	185.9	W	125.3	171.3	182.3	125.8
October	211.3	191.9	197.7	W	137.0	171.7	193.7	135.9
November	229.1	208.6	214.0	W	150.1	191.5	215.1	147.9
December	230.4	211.9	216.1	W	148.1	193.9	219.4	147.6
2007	204.2	181.4	183.7	W	119.7	170.5	188.8	120.6
2008								
January	236.6	217.5	220.4	W	151.3	195.8	227.8	153.0
February	235.9	215.6	218.1	W	143.9	195.2	224.7	148.3
March	239.6	215.8	221.4	W	146.9	204.6	225.9	150.7
April	245.1	218.6	224.8	W	156.8	221.2	227.8	158.1
May	254.3	228.6	235.3	W	169.9	249.5	233.3	168.5
June	259.0	234.3	241.3	W	177.1	252.5	238.4	176.8
July	259.9	244.6	253.4	W	186.9	252.1	246.1	183.8
August	256.1	238.2	247.2	W	169.5	236.4	239.2	168.7
September	256.1	231.7	236.8	W	157.3	225.0	240.0	159.3
October	241.7	215.0	221.1	W	113.7	197.2	220.8	128.1
November	230.4	193.7	199.5	W	76.1	183.2	208.5	104.5
December	221.7	181.4	187.1	W	63.8	178.7	204.7	95.4
2008	238.9	215.0	222.3	W	148.8	204.0	224.5	145.5
2009								
January	221.5	182.2	185.4	W	71.5	178.4	206.6	99.5
February	222.3	179.8	180.7	W	66.4	179.4	202.5	92.3
March	213.6	169.7	172.7	W	65.1	174.6	187.8	83.1
April	199.2	161.4	162.0	W	63.6	NA	175.2	75.2
May	188.5	155.2	155.4	W	70.0	203.7	156.2	76.0
June	181.2	157.7	157.3	W	84.2	188.2	155.7	86.6
July	176.1	155.4	161.0	W	74.7	166.4	146.3	78.5
August	170.8	152.5	156.6	W	89.8	154.9	148.7	85.9
September	175.8	157.7	158.5	W	94.6	154.9	153.0	94.2
October	181.5	160.7	168.5	W	99.3	138.2	161.1	101.8
November	192.3	169.1	172.9	W	106.7	143.0	165.4	111.6
December	205.9	183.1	182.8	W	117.8	162.5	189.3	120.7
2009	202.5	169.8	170.6	W	87.5	158.5	177.7	95.5

NA = Not available.

W = Withheld to avoid disclosure of individual company data.

Notes: The 4th quarter of 1993 was a transitional period between the predecessor EIA-782 survey system and the revised EIA-782 survey system. The revised survey system contains additional product and sales categories, which may not be consistent with categories derived from the predecessor survey system. Beginning January 1994 all data are from the revised survey system and are consistent.

Sources: Energy Information Administration Forms EIA-782A, "Refiners/Gas Plant Operators' Monthly Petroleum Product Sales Report," and EIA-782B, "Resellers/Retailers' Monthly Petroleum Product Sales Report."

Table 13. U.S. No. 2 Distillate^a Prices by Sales Type
(Cents per Gallon Excluding Taxes)

Year Month	Sales to End Users						Sales for Resale
	Residential Consumers	Commercial/ Institutional Consumers	Industrial Consumers	Through Retail Outlets ^b	Other End Users ^c	Average	
1983	107.8	86.3	88.3	94.3	89.7	93.3	81.8
1984	109.1	85.7	87.0	92.0	89.2	92.6	81.9
1985	105.3	82.1	83.4	88.6	85.3	89.0	78.1
1986	83.6	51.4	53.7	59.8	56.9	61.4	48.0
1987	80.3	56.6	59.7	64.4	63.1	64.3	53.5
1988	81.3	51.9	54.2	61.6	58.7	61.2	48.2
1989	90.0	60.8	63.8	68.5	66.7	69.5	57.2
1990	106.3	75.1	78.0	85.2	82.8	84.1	70.6
1991	101.9	67.5	69.7	74.5	73.8	76.0	62.7
1992	93.4	63.7	67.5	72.1	72.1	72.6	59.1
1993	91.1	62.0	66.7	71.1	70.5	71.0	56.6
1994	88.4	58.7	64.1	67.3	65.5	67.5	52.9
1995	86.7	59.3	64.4	67.0	67.3	67.3	53.6
1996	98.9	71.4	77.1	78.8	79.3	79.3	66.0
1997	98.4	67.4	71.2	74.5	75.3	75.3	61.1
1998	85.2	52.5	55.6	59.3	60.0	59.9	45.0
1999	87.6	60.5	63.9	68.5	68.7	67.8	53.8
2000	131.1	96.2	99.1	103.6	105.0	104.4	90.1
2001	125.0	86.1	90.7	94.3	96.0	94.8	78.5
2002	112.9	79.2	82.6	86.2	87.8	87.4	72.8
2003	135.5	97.0	100.3	104.4	102.1	105.8	89.1
2004	154.8	126.3	131.0	134.8	133.3	133.9	117.8
2005	205.2	180.3	185.2	193.3	192.7	189.5	172.7
2006	236.5	208.2	212.3	220.8	219.9	217.6	199.9
2007							
January	231.1	182.0	186.8	195.9	191.9	196.5	170.3
February	239.1	194.0	196.0	199.0	200.7	205.2	182.6
March	244.9	205.2	209.6	217.7	215.8	216.9	196.3
April	248.0	217.1	222.1	233.8	228.6	228.2	210.6
May	248.0	218.2	226.3	229.3	229.2	226.4	210.9
June	249.2	224.8	230.5	231.7	231.6	230.0	215.2
July	254.9	231.6	236.9	237.8	239.2	236.5	222.4
August	250.9	227.8	235.7	236.9	237.6	234.6	219.5
September	260.9	240.9	246.5	246.9	248.6	245.9	232.5
October	275.9	252.7	259.1	257.8	260.5	257.9	243.0
November	304.0	280.4	284.7	287.2	285.7	286.6	269.5
December	309.8	272.1	276.8	281.3	277.1	282.5	261.4
2007	259.2	227.7	233.1	237.9	238.4	236.5	220.8
2008							
January	313.8	271.1	275.3	279.4	275.2	282.2	260.0
February	318.1	285.7	290.8	289.1	288.2	292.8	273.1
March	347.5	328.0	330.9	336.9	331.0	334.6	314.6
April	362.6	346.7	350.0	356.0	352.0	352.7	335.5
May	392.1	383.5	384.3	392.2	386.1	388.1	371.3
June	420.4	398.0	400.7	414.3	402.5	406.7	386.5
July	429.6	398.5	402.1	415.7	403.6	407.8	388.3
August	386.6	349.7	357.0	374.2	357.1	363.1	335.6
September	366.7	330.3	338.2	348.0	338.6	341.4	316.7
October	316.9	267.8	280.1	301.9	281.3	288.2	252.8
November	277.9	215.2	224.3	230.9	225.6	229.8	198.9
December	245.0	171.2	178.9	189.8	174.7	190.9	153.0
2008	321.9	312.7	320.6	329.7	320.9	322.2	297.5
2009							
January	242.6	173.6	174.4	177.8	171.4	188.5	154.6
February	230.9	157.5	160.4	166.1	156.4	173.7	139.5
March	221.0	152.8	155.1	157.1	152.3	164.0	136.2
April	221.1	163.7	168.2	169.2	165.5	171.3	147.9
May	216.7	168.8	173.5	173.3	173.0	173.9	154.6
June	230.7	198.0	199.6	203.7	200.4	202.2	183.9
July	221.9	189.0	193.8	201.8	194.2	197.0	175.4
August	236.9	207.0	209.1	212.2	209.6	210.7	194.2
September	233.4	199.0	204.8	210.0	201.9	206.2	185.3
October	245.8	212.2	214.1	216.4	213.9	217.0	199.0
November	260.8	217.7	220.6	227.2	222.0	226.1	204.9
December	262.8	215.5	219.2	223.3	217.1	226.1	201.9
2009	238.6	187.8	191.4	195.3	191.1	196.4	172.7

^a Includes sales of No. 2 fuel oil and diesel fuels.

^b Includes ultra-low and low-sulfur diesel fuels only.

^c All end-user sales not included in the other end-user categories shown, e.g., sales to agricultural customers or utilities.

Sources: Energy Information Administration Forms EIA-782A, "Refiners'/Gas Plant Operators' Monthly Petroleum Product Sales Report," and EIA-782B, "Resellers'/Retailers' Monthly Petroleum Product Sales Report."

Table 14. U.S. No. 2 Diesel Fuel Prices by Sulfur Content and Sales Type
(Cents per Gallon Excluding Taxes)

Year Month	Ultra Low-Sulfur Diesel Fuel						Low-Sulfur Diesel Fuel					
	Sales to End Users					Sales for Resale	Sales to End Users					Sales for Resale
	Commercial/ Institutional Consumers	Industrial Consumers	Through Retail Outlets	Other End Users ^a	Average		Commercial/ Institutional Consumers	Industrial Consumers	Through Retail Outlets	Other End Users ^a	Average	
1994	-	-	-	-	-	-	59.1	66.0	67.3	67.4	64.2	54.2
1995	-	-	-	-	-	-	59.8	66.3	67.0	68.4	64.5	55.1
1996	-	-	-	-	-	-	72.3	79.1	78.8	80.6	76.7	67.3
1997	-	-	-	-	-	-	67.0	72.2	74.5	76.0	71.9	61.9
1998	-	-	-	-	-	-	51.5	55.7	59.3	60.1	56.5	45.7
1999	-	-	-	-	-	-	61.7	64.3	68.5	70.4	66.3	55.7
2000	-	-	-	-	-	-	96.8	97.1	103.6	106.2	101.4	90.9
2001	-	-	-	-	-	-	86.8	89.1	94.3	94.9	91.7	79.4
2002	-	-	-	-	-	-	80.1	81.9	86.2	85.8	84.1	73.8
2003	-	-	-	-	-	-	97.2	99.7	104.4	100.9	101.4	89.5
2004	-	-	-	-	-	-	128.4	131.8	134.8	132.9	132.5	119.7
2005	-	-	-	-	-	-	183.1	188.3	193.3	193.0	189.9	176.1
2006	-	-	-	-	-	-	212.2	215.9	220.8	220.7	218.3	204.5
2007												
January	185.5	193.4	197.8	193.4	193.5	173.7	177.2	185.8	192.5	193.0	188.3	169.3
February	198.2	200.6	201.1	204.1	200.7	187.0	190.0	194.7	195.5	199.4	194.8	180.5
March	212.3	218.4	219.1	219.4	217.1	203.6	205.4	211.4	215.3	214.9	213.1	197.4
April	223.7	231.1	234.9	231.8	230.8	216.8	217.9	222.7	231.8	230.7	228.3	209.5
May	221.9	231.3	231.8	231.5	228.7	214.9	216.4	223.0	224.6	231.8	223.7	207.4
June	228.1	233.4	233.7	234.3	232.1	217.9	220.8	227.5	227.4	232.0	226.6	212.7
July	234.3	239.4	239.6	241.7	238.4	224.9	227.2	232.3	233.7	238.0	232.6	218.7
August	229.2	236.7	238.6	239.3	235.8	222.2	224.2	233.1	233.0	237.7	231.4	215.5
September	242.7	247.3	248.2	249.1	246.7	235.4	237.0	244.9	243.9	250.9	243.2	229.0
October	254.7	260.4	259.7	262.1	258.7	245.9	248.8	256.0	253.5	261.3	253.7	239.9
November	282.0	285.4	288.8	286.5	286.2	272.2	276.4	284.3	283.6	284.7	282.1	269.8
December	271.2	276.2	282.8	275.8	278.0	262.4	267.3	273.4	277.9	281.4	275.4	262.3
2007	233.7	240.3	240.5	241.0	238.6	225.8	226.1	228.2	232.4	241.1	231.7	221.1
2008												
January	270.2	274.4	280.1	273.8	276.3	260.8	267.0	271.0	276.7	280.6	274.0	260.0
February	286.5	290.7	289.6	286.9	288.6	276.5	284.5	287.3	287.6	292.5	287.4	274.9
March	329.7	330.9	337.0	331.2	333.9	318.0	327.7	329.2	336.5	330.1	332.7	316.9
April	348.0	350.6	356.5	351.3	353.0	337.9	346.0	348.4	353.9	355.4	351.4	335.2
May	385.8	384.4	392.8	385.5	389.1	373.5	382.4	383.4	389.7	387.6	386.7	370.9
June	399.4	401.4	414.9	401.7	407.5	387.3	397.1	397.7	412.1	405.2	405.4	387.0
July	399.5	403.3	416.0	402.6	408.3	389.0	395.2	398.8	414.6	407.8	405.8	387.6
August	349.2	357.6	374.8	357.0	363.5	336.5	347.6	354.4	371.2	363.9	361.4	334.7
September	330.4	338.0	348.2	336.4	340.6	318.3	329.6	337.9	347.1	347.7	341.0	316.8
October	267.2	279.0	301.7	280.0	286.9	254.6	267.9	283.9	302.8	291.9	288.8	250.5
November	214.2	222.9	231.2	223.0	224.3	198.4	208.8	221.2	229.5	237.5	224.1	198.0
December	166.8	175.5	189.3	174.4	179.5	150.5	162.9	181.2	191.5	180.1	181.9	150.0
2008	313.8	320.4	330.3	319.8	323.3	302.2	315.1	320.5	327.2	328.2	323.2	298.3
2009												
January	167.8	171.0	177.6	172.4	173.8	151.7	163.5	175.2	178.9	173.5	173.5	150.9
February	151.7	156.5	166.0	155.3	160.2	136.0	148.9	155.6	167.1	163.3	160.1	135.9
March	149.4	151.1	156.9	152.4	153.9	134.9	144.6	151.4	158.3	155.9	153.5	132.0
April	162.8	164.9	168.8	166.1	166.6	148.5	159.1	164.6	171.4	169.7	167.0	145.4
May	169.0	170.6	173.1	172.9	171.9	155.2	165.7	171.9	174.2	178.1	172.1	153.6
June	198.8	197.6	203.4	201.7	201.5	184.9	194.4	198.4	205.8	200.3	200.4	182.0
July	189.4	192.4	201.4	194.1	196.5	176.6	185.7	190.4	204.4	198.4	196.0	172.1
August	207.7	206.5	212.0	210.5	210.3	195.5	203.6	208.7	214.3	211.1	209.8	192.5
September	199.5	203.6	209.7	201.8	205.3	186.5	195.0	201.6	212.3	207.6	204.6	182.0
October	211.9	212.2	216.2	213.8	214.5	199.9	210.2	213.9	217.7	219.3	215.1	196.5
November	217.1	219.6	226.9	221.9	223.1	205.4	214.5	220.8	228.9	227.5	223.3	203.0
December	213.8	217.7	223.2	216.8	219.6	202.1	214.6	219.1	223.4	223.9	220.2	200.8
2009	187.2	189.0	195.3	191.5	192.2	174.2	183.8	190.5	195.1	195.8	191.3	164.8

See footnotes at end of table.

Table 14. U.S. No. 2 Diesel Fuel Prices by Sulfur Content and Sales Type
(Cents per Gallon Excluding Taxes) — Continued

Year Month	High-Sulfur Diesel Fuel					Total Diesel Fuel					
	Sales to End Users				Sales for Resale	Sales to End Users					Sales for Resale
	Commercial/ Institutional Consumers	Industrial Consumers	Other End Users ^a	Average		Commercial/ Institutional Consumers	Industrial Consumers	Through Retail Outlets	Other End Users ^a	Average	
1994	55.3	62.9	64.6	59.8	51.9	57.7	64.5	67.3	66.1	62.8	53.8
1995	56.8	63.6	66.7	61.4	52.4	58.8	64.9	67.0	67.7	63.6	54.6
1996	68.7	75.9	78.4	73.2	63.9	71.1	77.5	78.8	79.6	75.7	66.7
1997	65.9	70.8	75.3	69.8	60.2	66.6	71.5	74.5	75.7	71.4	61.6
1998	51.8	56.7	60.8	55.5	43.7	51.6	56.2	59.3	60.4	56.2	45.4
1999	58.0	64.8	67.6	62.0	51.9	60.5	64.5	68.5	69.4	65.4	55.2
2000	93.8	101.7	103.9	98.1	87.5	95.8	99.0	103.6	105.2	100.6	90.4
2001	83.7	93.3	98.0	89.2	77.1	85.7	90.7	94.3	96.0	91.2	79.1
2002	76.7	83.9	91.3	82.2	71.2	78.9	82.6	86.2	87.9	83.7	73.5
2003	94.1	101.8	104.4	98.6	87.0	96.1	100.4	104.4	102.2	100.8	89.1
2004	123.7	132.2	135.4	128.1	114.6	126.8	131.9	134.8	133.7	131.6	119.1
2005	178.8	183.3	193.2	183.3	170.4	181.7	186.4	193.3	193.1	188.6	175.4
2006	203.1	209.5	219.5	208.4	191.5	209.2	213.5	220.8	220.3	216.5	202.9
2007											
January	175.3	181.4	187.4	178.9	160.2	181.0	187.7	195.9	192.0	190.0	171.1
February	184.5	192.2	196.5	188.1	172.2	192.9	196.7	199.0	201.8	197.3	184.2
March	192.0	197.2	207.9	196.1	179.2	205.7	211.0	217.7	216.2	213.2	199.8
April	204.9	207.6	219.8	208.2	193.1	217.9	223.4	233.8	229.3	227.1	213.3
May	210.2	218.3	222.4	214.7	198.6	218.5	226.8	229.3	229.7	225.8	212.4
June	218.5	225.7	225.5	221.5	206.2	225.0	230.9	231.7	232.1	229.6	216.3
July	227.8	234.3	233.3	230.4	216.8	231.9	237.2	237.8	239.5	236.3	223.5
August	227.3	235.2	233.8	230.5	215.6	227.9	235.8	236.9	238.1	234.3	220.8
September	238.4	245.7	244.1	241.3	229.8	241.0	246.6	246.9	248.7	245.4	234.1
October	248.9	256.8	252.0	251.3	237.8	252.8	259.1	257.8	260.5	256.9	244.6
November	281.0	283.4	282.5	282.1	265.4	280.7	284.9	287.2	285.5	284.9	271.6
December	280.7	286.2	276.2	280.5	258.6	271.4	276.8	281.3	276.8	277.5	262.3
2007	213.4	221.0	229.7	218.7	195.9	228.4	233.9	237.9	239.0	234.8	223.0
2008											
January	277.3	286.6	275.1	278.3	258.3	270.2	275.0	279.4	275.1	275.9	260.6
February	283.8	297.6	289.8	288.0	265.6	285.8	290.7	289.1	288.1	288.3	275.9
March	327.5	334.5	330.5	329.6	311.0	329.1	330.9	336.9	330.9	333.4	317.7
April	346.6	348.7	350.9	348.6	329.4	347.5	350.0	356.0	351.9	352.4	337.3
May	373.2	385.5	387.4	380.6	364.2	384.0	384.3	392.2	386.1	388.1	372.9
June	390.2	399.0	403.1	396.9	382.1	398.2	400.5	414.3	402.5	406.5	387.2
July	397.4	396.7	403.3	399.8	390.0	398.4	401.9	415.7	403.5	407.4	388.8
August	357.5	353.9	350.2	354.1	334.5	349.6	356.7	374.2	357.1	362.6	336.2
September	331.2	338.1	340.1	336.0	318.7	330.3	338.0	348.0	338.6	340.4	318.1
October	273.2	279.7	274.5	274.9	254.6	267.8	279.9	301.9	281.5	286.5	253.8
November	216.6	232.8	222.6	221.7	197.1	213.5	223.4	230.9	225.5	224.2	198.3
December	164.4	187.9	168.7	170.1	148.8	165.9	177.7	189.8	174.3	179.5	150.4
2008	317.4	321.0	319.4	318.7	288.7	314.3	320.5	329.7	321.1	323.0	301.3
2009											
January	164.9	NA	165.4	168.2	151.4	166.9	172.8	177.8	171.6	173.4	151.5
February	149.9	NA	153.9	157.0	136.6	151.1	159.0	166.1	156.2	160.0	136.0
March	142.7	178.6	148.9	150.7	133.1	148.0	153.6	157.1	152.5	153.7	134.4
April	158.1	191.5	156.6	162.7	142.6	161.9	167.1	169.2	165.6	166.5	148.0
May	163.1	195.0	165.9	168.9	151.1	168.1	172.7	173.3	173.1	171.8	154.9
June	195.5	213.1	191.4	196.9	180.7	197.8	199.1	203.7	200.5	201.2	184.4
July	191.3	208.3	188.1	192.7	173.7	188.9	193.2	201.8	194.2	196.2	176.1
August	206.3	225.4	201.7	207.3	192.9	206.9	208.6	212.2	209.6	210.1	195.2
September	199.5	218.8	194.6	200.7	182.8	198.8	204.5	210.0	201.9	205.0	186.0
October	214.1	224.5	206.5	212.2	197.2	211.7	213.6	216.4	213.9	214.5	199.5
November	220.4	225.3	213.3	217.8	204.8	216.8	220.2	227.2	222.1	222.9	205.2
December	211.7	225.9	211.8	214.0	201.7	213.8	218.7	223.3	217.3	219.4	201.9
2009	182.7	205.4	183.2	186.5	172.4	186.3	190.7	195.3	191.3	191.8	173.0

Dash (-) = No data reported.

NA = Not available.

^a All end-user sales not included in the other end-user categories shown, e.g., sales to agricultural customers or utilities.

Notes: The 4th quarter of 1993 was a transitional period between the predecessor EIA-782 survey system and the revised EIA-782 survey system. The revised survey system contains additional product and sales categories, which may not be consistent with categories derived from the predecessor survey system. Beginning January 1994 all data are from the revised survey system and are consistent.

Note: In January 2007, ultra low-sulfur diesel fuel was added.

Sources: Energy Information Administration Forms EIA-782A, "Refiners'/Gas Plant Operators' Monthly Petroleum Product Sales Report," and EIA-782B, "Resellers'/Retailers' Monthly Petroleum Product Sales Report."

Table 15. Prices of No. 2 Distillate to Residences by PAD District and Selected States^a
(Cents per Gallon Excluding Taxes)

Year Month	U.S. Average	PAD District I								
		Average	CT	ME	MA	NH	RI	VT	DE	DC
1983	107.8	109.0	109.1	102.8	109.1	104.1	110.5	112.9	106.0	117.0
1984	109.1	111.3	112.1	103.9	111.6	108.4	111.4	111.9	109.6	118.7
1985	105.3	106.8	108.0	99.7	107.0	102.4	106.7	107.7	104.6	114.3
1986	83.6	86.2	89.0	74.4	82.1	75.9	82.8	86.6	85.0	93.1
1987	80.3	81.4	83.4	74.7	80.6	76.5	82.5	81.1	79.3	91.8
1988	81.3	82.7	85.3	77.7	82.1	78.2	83.6	82.6	80.1	91.6
1989	90.0	91.7	92.9	89.4	92.6	89.3	93.9	90.5	88.2	98.6
1990	106.3	108.1	109.8	98.9	108.4	102.8	108.6	107.0	105.8	107.8
1991	101.9	104.1	106.2	96.0	103.0	91.6	99.9	101.9	99.7	112.2
1992	93.4	94.9	94.7	87.1	92.5	85.6	91.2	92.1	92.3	105.7
1993	91.1	92.1	91.9	82.6	89.7	82.8	89.3	90.4	89.9	104.5
1994	88.4	89.4	89.0	81.8	87.0	79.2	88.5	87.6	89.4	100.0
1995	86.7	87.5	86.4	78.7	84.4	77.9	87.4	85.3	87.0	101.0
1996	98.9	100.0	98.6	97.2	97.6	94.0	98.6	96.9	98.4	117.8
1997	98.4	99.3	96.3	94.2	96.0	94.2	98.9	98.7	98.4	117.4
1998	85.2	86.2	83.1	78.8	81.8	78.8	86.8	87.3	85.8	102.2
1999	87.6	88.0	85.2	81.3	83.6	77.0	85.8	85.4	88.4	101.1
2000	131.1	132.5	129.1	129.7	127.3	128.1	125.9	125.5	127.0	W
2001	125.0	126.0	123.9	121.7	122.1	125.6	123.6	126.1	123.4	143.1
2002	112.9	114.3	111.8	112.9	114.1	111.9	112.4	117.2	116.4	W
2003	135.5	137.2	135.5	131.4	138.6	131.2	134.4	130.9	143.3	W
2004	154.8	155.5	151.8	151.1	155.9	149.7	151.1	150.5	157.0	W
2005	205.2	205.2	201.2	198.6	206.4	197.2	200.0	198.7	207.5	W
2006	236.5	236.8	235.7	229.4	235.5	228.3	236.0	240.8	238.1	W
2007										
January	231.1	231.9	238.4	229.5	227.7	234.5	226.9	252.6	234.6	W
February	239.1	240.3	242.4	234.7	237.0	232.6	236.7	257.5	247.7	W
March	244.9	245.3	246.3	239.7	242.5	242.3	242.5	259.3	249.6	W
April	248.0	247.8	249.8	243.7	245.6	244.4	247.6	260.6	246.6	W
May	248.0	248.0	250.5	241.7	245.8	242.5	247.2	257.1	245.6	W
June	249.2	249.4	251.8	241.3	246.2	239.7	247.6	253.1	NA	W
July	254.9	255.1	256.2	247.6	256.9	239.2	255.1	258.9	246.4	W
August	250.9	249.6	250.9	250.9	251.6	239.0	252.3	255.7	245.1	W
September	260.9	259.9	261.3	258.2	259.8	249.4	263.7	262.6	252.6	W
October	275.9	274.2	276.9	272.1	272.6	264.8	276.0	269.8	270.7	W
November	304.0	302.8	301.3	293.1	303.2	289.3	308.1	293.7	302.8	W
December	309.8	310.1	305.5	299.9	311.1	301.4	313.5	302.4	320.0	W
2007	259.2	259.3	261.5	254.0	257.6	253.5	260.2	267.9	258.4	W
2008										
January	313.8	314.7	309.1	304.6	313.6	305.1	317.3	309.5	322.8	W
February	318.1	318.4	312.3	305.0	319.3	305.0	320.2	310.5	326.0	W
March	347.5	346.8	336.2	330.9	352.5	331.1	349.5	337.1	354.8	W
April	362.6	361.4	349.4	349.0	370.1	347.4	366.2	357.5	362.6	W
May	392.1	391.1	380.6	376.3	397.7	384.3	392.7	391.3	390.3	W
June	420.4	420.9	411.3	419.7	429.3	425.7	417.6	425.2	423.1	W
July	429.6	432.0	419.4	429.0	435.9	442.7	428.7	448.4	434.5	W
August	386.6	388.4	NA	395.7	389.2	404.8	384.2	417.6	389.8	W
September	366.7	367.5	368.1	375.7	362.8	376.8	357.5	393.9	362.4	W
October	316.9	318.8	319.9	322.8	306.7	331.8	300.0	350.2	314.8	W
November	277.9	281.2	288.6	279.5	264.6	285.7	273.5	313.7	267.7	W
December	245.0	249.1	261.3	251.3	233.9	255.9	240.8	280.2	244.1	W
2008	321.9	322.3	319.5	319.9	319.7	320.7	321.0	332.3	318.7	W
2009										
January	242.6	246.2	257.6	250.6	235.6	253.7	234.6	277.4	242.8	W
February	230.9	234.3	242.9	240.4	222.6	242.6	220.9	269.3	231.0	W
March	221.0	225.0	236.2	223.7	216.6	228.3	212.7	254.5	225.3	W
April	221.1	224.3	231.4	225.0	219.2	224.6	214.3	243.7	226.7	W
May	216.7	220.0	222.5	217.5	214.2	215.1	216.9	237.0	225.3	W
June	230.7	232.5	241.3	229.5	237.1	220.1	238.5	237.6	228.9	W
July	221.9	223.6	235.4	226.8	231.2	207.7	228.5	232.4	225.3	W
August	236.9	239.0	249.0	235.0	243.2	224.3	245.4	237.8	234.0	W
September	233.4	234.3	234.9	233.3	238.6	227.2	235.7	240.3	230.9	W
October	245.8	247.0	251.6	239.1	247.0	237.3	253.7	248.4	250.5	W
November	260.8	262.6	264.5	246.1	261.9	248.4	268.5	260.4	268.3	W
December	262.8	264.3	266.5	248.6	263.4	252.3	271.8	264.0	272.4	W
2009	238.6	241.2	248.7	238.2	235.8	237.7	237.6	259.3	242.1	W

See footnotes at end of table.

Table 15. Prices of No. 2 Distillate to Residences by PAD District and Selected States^a

(Cents per Gallon Excluding Taxes) — Continued

Year Month	PAD District I (Continued)						PAD District II			
	MD	NJ	NY	PA	VA	WV	Average	IL	IN	MI
1983	110.3	107.9	112.1	105.8	108.7	101.0	102.0	100.4	100.7	106.4
1984	113.5	111.0	115.5	107.9	110.5	102.1	101.7	100.1	103.1	105.0
1985	108.8	105.9	111.3	102.3	106.3	98.0	99.4	97.5	99.1	102.1
1986	91.4	90.2	91.1	81.4	86.6	74.6	72.7	NA	74.8	81.0
1987	86.6	84.3	85.2	76.9	79.5	76.4	74.8	79.8	75.4	77.5
1988	87.0	84.8	86.3	77.8	80.5	74.2	74.3	77.6	75.4	77.5
1989	93.8	91.8	95.8	85.1	87.0	83.0	81.9	80.9	83.2	85.3
1990	111.9	108.8	112.5	102.6	110.6	99.1	97.8	96.1	99.3	100.9
1991	108.4	104.0	111.3	99.7	101.1	93.4	90.8	92.7	91.8	94.2
1992	100.0	93.9	102.8	89.0	92.8	86.4	82.9	87.7	81.2	87.2
1993	98.1	92.4	100.1	86.3	89.3	85.6	83.3	84.4	81.0	87.2
1994	95.0	89.5	96.6	85.7	85.3	80.9	80.8	78.4	81.2	86.3
1995	93.6	88.8	95.5	82.6	84.4	81.5	80.9	78.5	81.6	86.0
1996	106.3	102.4	106.3	95.3	95.2	96.0	91.3	89.3	91.2	97.7
1997	105.7	103.3	106.5	95.0	94.8	96.2	91.0	87.0	86.5	94.2
1998	90.2	89.2	94.8	81.4	85.6	81.8	76.5	73.5	74.8	80.4
1999	90.7	91.3	96.9	81.5	87.0	78.9	82.3	71.6	79.3	88.3
2000	135.1	140.4	144.2	122.4	126.9	125.1	119.2	109.5	120.7	NA
2001	134.2	131.4	136.3	115.9	120.2	113.9	116.3	112.1	113.3	NA
2002	120.1	122.0	121.8	106.4	105.7	105.4	103.9	97.5	102.5	110.9
2003	145.5	148.9	143.6	130.4	131.1	130.4	122.9	119.8	120.2	132.1
2004	163.2	166.2	162.7	148.9	146.2	149.3	145.7	140.5	153.7	153.9
2005	212.7	216.6	210.5	197.4	204.4	204.3	200.0	202.1	201.7	205.3
2006	239.8	246.7	245.8	228.6	226.8	226.1	228.6	231.2	231.7	232.9
2007										
January	240.3	236.2	238.6	224.7	211.4	212.9	215.9	221.7	218.2	221.1
February	246.9	247.2	249.7	234.7	214.1	223.3	223.6	222.3	228.4	227.2
March	251.3	253.2	251.6	237.0	226.8	229.9	237.9	236.4	242.6	247.3
April	251.7	256.1	254.8	239.0	224.4	229.2	248.3	246.8	255.5	258.4
May	256.2	256.6	257.1	241.7	223.8	228.3	245.7	239.7	246.0	247.6
June	255.4	253.8	263.1	241.5	232.7	236.2	249.0	243.3	246.7	245.6
July	258.7	258.6	269.1	242.8	236.6	241.2	255.9	252.0	255.2	254.2
August	258.8	258.2	260.5	238.1	236.2	240.9	260.5	256.2	258.5	257.3
September	266.1	267.8	269.6	249.4	245.6	253.5	269.0	258.9	263.7	266.8
October	283.0	281.2	282.8	261.6	266.3	266.7	279.7	275.0	280.8	280.1
November	312.4	316.8	309.1	294.6	295.5	300.3	309.5	307.5	313.3	310.3
December	322.1	326.1	315.5	300.9	300.2	306.2	305.0	303.9	309.6	304.0
2007	266.8	266.4	267.4	250.8	240.7	247.8	255.3	252.8	255.7	258.8
2008										
January	326.4	332.5	321.8	305.7	306.4	311.5	303.5	300.5	306.3	304.6
February	331.1	335.1	325.8	309.7	314.8	316.3	313.5	310.0	312.3	316.9
March	354.5	369.0	352.1	340.3	340.6	347.9	352.7	357.4	345.3	359.1
April	367.2	385.5	364.9	355.3	352.8	363.9	369.2	368.5	364.3	370.2
May	402.9	413.5	393.4	385.1	384.8	391.6	397.9	405.0	409.1	400.0
June	424.6	447.2	416.4	416.4	412.6	425.2	414.6	NA	427.4	421.4
July	441.4	455.4	428.9	432.6	412.3	430.6	411.8	401.1	426.4	417.8
August	408.7	402.3	388.9	NA	376.4	386.3	374.5	NA	379.7	373.8
September	382.8	376.1	371.8	357.3	355.8	356.6	363.2	360.0	368.8	365.2
October	329.7	319.8	329.5	310.3	315.8	316.2	305.8	303.9	309.8	307.9
November	289.4	272.7	296.2	275.7	266.8	268.8	251.7	251.4	252.6	248.5
December	255.0	238.1	258.9	244.9	235.0	233.3	208.0	212.9	211.8	207.9
2008	327.3	326.7	329.3	315.7	312.4	322.1	312.4	315.2	310.5	306.7
2009										
January	247.0	238.9	254.3	242.7	222.5	232.9	200.6	206.9	206.2	199.1
February	240.7	228.8	244.7	226.8	214.5	218.8	185.9	186.9	191.2	186.6
March	227.5	216.6	233.4	220.2	199.9	204.2	177.3	183.6	182.2	180.6
April	226.3	218.7	233.8	217.7	NA	203.5	185.4	198.3	192.2	181.0
May	222.4	218.7	230.0	219.0	182.4	200.8	189.5	NA	197.2	180.7
June	232.0	238.1	242.8	221.1	203.7	211.9	213.7	206.0	217.6	209.5
July	230.7	232.2	229.1	213.7	205.5	212.2	208.4	NA	218.1	196.4
August	239.7	245.4	252.3	225.7	214.0	221.7	223.9	214.7	232.1	215.3
September	239.6	243.7	245.5	219.6	211.8	225.3	220.5	NA	231.8	217.9
October	256.1	254.1	257.4	231.5	232.2	239.7	232.5	238.6	239.1	233.6
November	270.7	271.0	274.7	252.0	240.8	250.4	244.1	248.3	252.0	248.5
December	276.3	273.1	273.3	253.6	249.5	249.6	243.6	242.7	250.7	244.7
2009	247.3	240.4	250.4	233.0	219.3	226.5	211.1	215.5	218.9	209.6

See footnotes at end of table.

Table 15. Prices of No. 2 Distillate to Residences by PAD District and Selected States^a

(Cents per Gallon Excluding Taxes) — Continued

Year Month	PAD District II (Continued)			PAD District III Average	PAD District IV		PAD District V			
	MN	OH	WI		Average	ID	Average	AK	OR	WA
1983	103.1	101.3	101.2	87.4	94.2	101.8	106.4	108.8	103.6	109.0
1984	104.1	102.1	101.0	97.9	96.8	98.5	101.5	106.9	99.3	102.6
1985	101.9	99.7	98.3	92.5	96.1	97.2	100.9	108.3	97.1	101.1
1986	79.2	77.7	75.6	67.4	70.6	73.8	78.1	94.9	70.4	77.5
1987	74.6	74.7	75.1	63.7	69.6	68.8	77.8	86.5	72.5	79.5
1988	73.5	74.7	73.9	62.8	69.1	68.8	76.9	86.9	70.9	78.5
1989	82.4	81.6	81.1	70.7	78.6	77.8	86.6	96.4	80.2	87.4
1990	101.4	98.1	94.2	85.5	97.0	97.4	102.6	110.1	97.0	102.9
1991	91.1	91.0	89.5	78.7	92.4	95.1	99.8	105.0	93.3	101.6
1992	82.6	83.6	81.6	71.3	84.8	85.7	92.1	94.1	87.6	94.0
1993	83.2	84.0	82.3	75.4	86.0	86.2	96.8	96.1	91.8	99.9
1994	80.6	81.2	81.1	71.4	78.6	78.9	90.9	86.5	88.7	95.0
1995	80.1	80.8	81.2	69.0	84.4	83.9	90.6	83.4	89.4	96.2
1996	90.9	92.1	89.9	77.5	94.2	93.3	99.9	90.9	98.9	108.0
1997	89.9	91.3	93.3	73.8	93.7	95.3	106.0	97.3	103.1	113.9
1998	73.8	76.7	80.1	59.1	77.6	78.4	91.4	85.2	86.1	97.8
1999	77.4	82.0	84.7	64.8	80.6	76.2	100.5	96.6	93.8	106.5
2000	115.6	122.0	117.1	111.4	116.4	117.0	139.3	133.7	136.8	144.5
2001	112.2	116.0	118.0	94.3	108.1	103.8	130.8	137.7	121.1	133.6
2002	105.1	105.8	107.3	84.8	90.9	91.9	113.2	108.7	106.0	120.4
2003	121.8	128.4	126.9	W	119.6	118.8	136.3	124.3	130.3	148.7
2004	143.3	147.5	146.5	W	139.7	149.5	165.8	152.4	159.4	174.9
2005	198.7	200.9	199.3	W	209.5	212.3	218.5	206.1	214.6	238.5
2006	226.8	224.4	229.7	W	237.4	239.1	249.8	239.5	241.1	268.1
2007										
January	216.9	209.2	219.9	W	224.8	228.4	248.3	226.0	230.9	262.7
February	224.8	221.6	224.0	W	222.1	224.9	244.4	220.9	224.3	262.7
March	241.5	231.8	239.1	W	239.3	241.7	245.8	224.0	228.2	270.0
April	251.7	236.4	254.2	NA	262.1	254.1	251.7	238.1	231.5	281.2
May	251.9	230.0	249.5	W	254.8	NA	252.7	244.9	237.4	282.4
June	249.9	238.2	251.7	W	245.5	253.0	247.0	247.7	NA	274.4
July	258.6	244.1	254.8	NA	253.0	257.9	250.4	252.7	NA	275.3
August	262.6	247.7	261.7	NA	253.3	257.3	254.6	256.3	NA	276.2
September	273.4	257.3	271.8	NA	266.3	263.6	261.6	255.8	250.7	284.6
October	282.6	273.5	281.4	W	288.8	287.0	300.9	276.3	298.0	321.5
November	305.0	308.7	310.3	W	317.3	321.3	327.1	303.2	319.5	345.9
December	296.4	307.0	306.9	W	307.2	302.5	319.1	301.1	304.5	335.7
2007	258.7	249.4	257.1	W	259.1	259.8	268.1	251.8	250.0	290.9
2008										
January	297.1	304.6	303.9	W	296.1	296.0	314.8	301.3	299.3	329.1
February	311.1	318.4	311.4	W	303.6	305.7	326.9	308.4	311.5	339.8
March	352.8	354.8	351.2	—	343.5	348.7	362.1	337.7	349.5	382.3
April	371.3	372.6	365.7	—	363.8	375.5	376.2	365.8	374.0	404.3
May	399.7	407.6	395.6	—	382.4	399.8	398.3	399.9	399.1	432.0
June	417.1	417.5	NA	W	397.9	417.8	422.9	430.9	423.7	454.5
July	416.3	414.7	399.3	W	NA	421.6	429.4	446.5	429.3	452.5
August	379.4	379.4	366.6	NA	377.9	384.4	385.7	422.1	383.6	412.4
September	365.8	367.0	360.1	—	353.4	358.2	359.6	389.7	355.2	382.4
October	309.8	301.9	308.6	252.8	310.8	312.7	304.3	NA	300.7	327.9
November	258.2	250.9	252.0	W	244.8	245.0	247.2	262.2	240.2	284.1
December	207.2	208.1	211.1	W	192.6	187.8	208.3	222.6	190.2	228.4
2008	306.5	314.7	308.8	W	316.4	307.8	332.5	348.5	306.0	340.1
2009										
January	197.4	204.1	200.4	W	185.6	187.9	216.7	216.0	193.9	238.8
February	181.3	188.8	185.4	W	178.5	176.2	209.3	NA	181.9	225.3
March	173.5	182.6	178.1	—	166.7	167.4	192.6	194.6	172.7	212.4
April	189.0	191.7	187.0	—	187.8	186.3	211.3	214.0	198.6	241.4
May	187.2	194.1	197.5	—	186.4	187.8	213.2	225.6	205.0	247.3
June	215.6	218.0	220.0	—	198.1	214.8	234.5	250.6	227.8	254.4
July	209.2	210.3	216.6	—	208.5	212.3	220.9	236.2	214.9	233.5
August	229.7	227.9	228.4	W	210.5	215.8	240.3	255.4	232.6	248.9
September	223.2	220.5	226.2	—	220.6	227.3	246.3	NA	235.7	265.8
October	230.1	236.4	233.1	W	232.1	233.3	259.5	NA	246.9	273.7
November	238.8	247.9	242.1	W	242.5	245.9	266.4	NA	255.1	287.1
December	239.4	249.3	239.5	W	236.8	235.4	268.9	NA	247.5	283.0
2009	212.4	213.0	210.5	188.2	205.2	204.8	232.9	250.3	213.2	249.1

Dash (—) = No data reported.

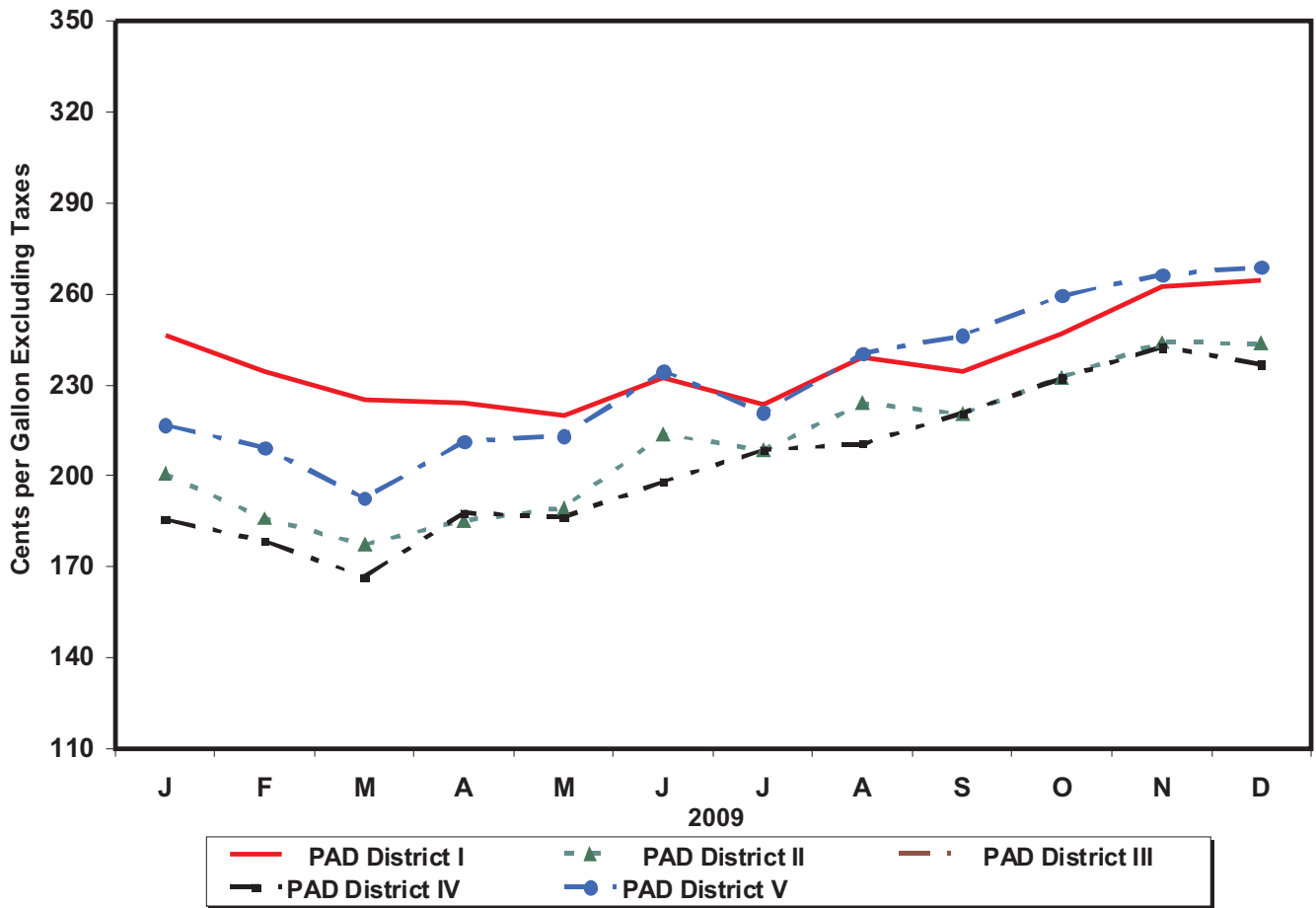
NA = Not available.

W = Withheld to avoid disclosure of individual company data.

^a Some State data are not sufficient for publication individually, but are used in calculating the U.S. and the PAD District averages.

Sources: Energy Information Administration Forms EIA-782A, "Refiners/Gas Plant Operators' Monthly Petroleum Product Sales Report," and EIA-782B, "Resellers/Retailers' Monthly Petroleum Product Sales Report," January 1983 forward.

Figure 6. U.S. No. 2 Distillate Prices to Residences by PAD District



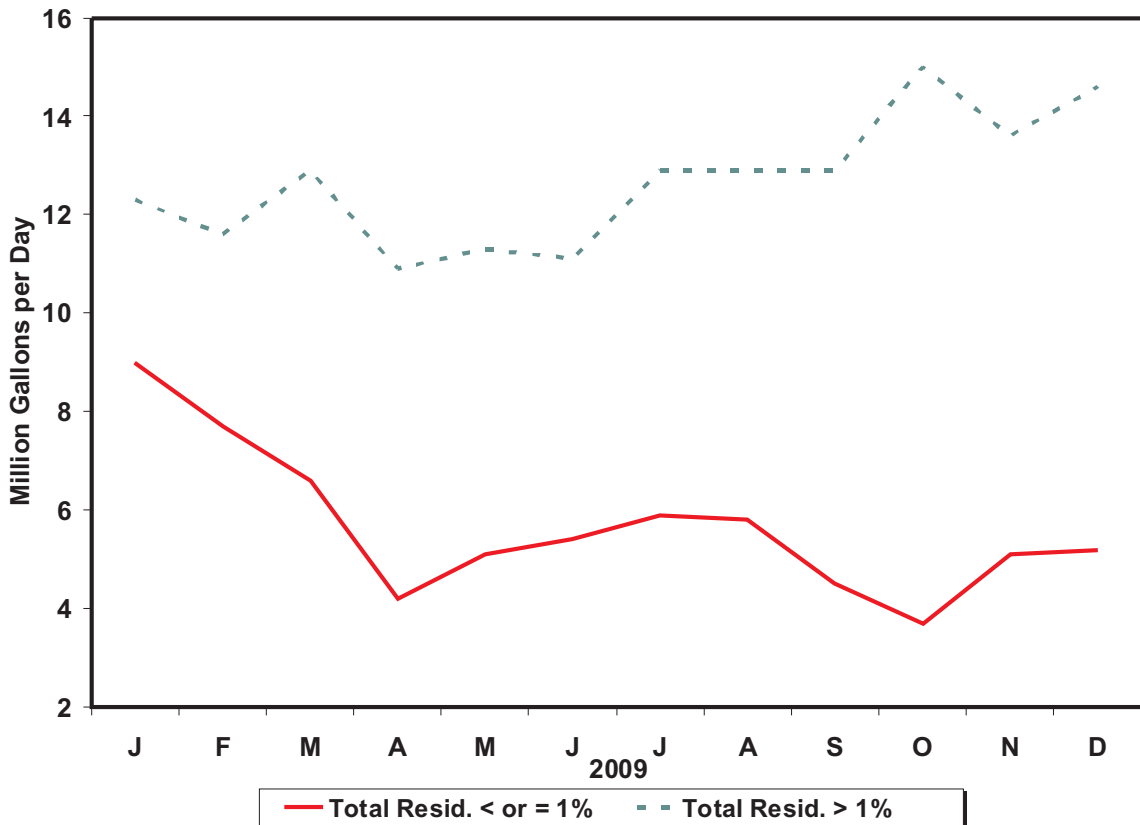
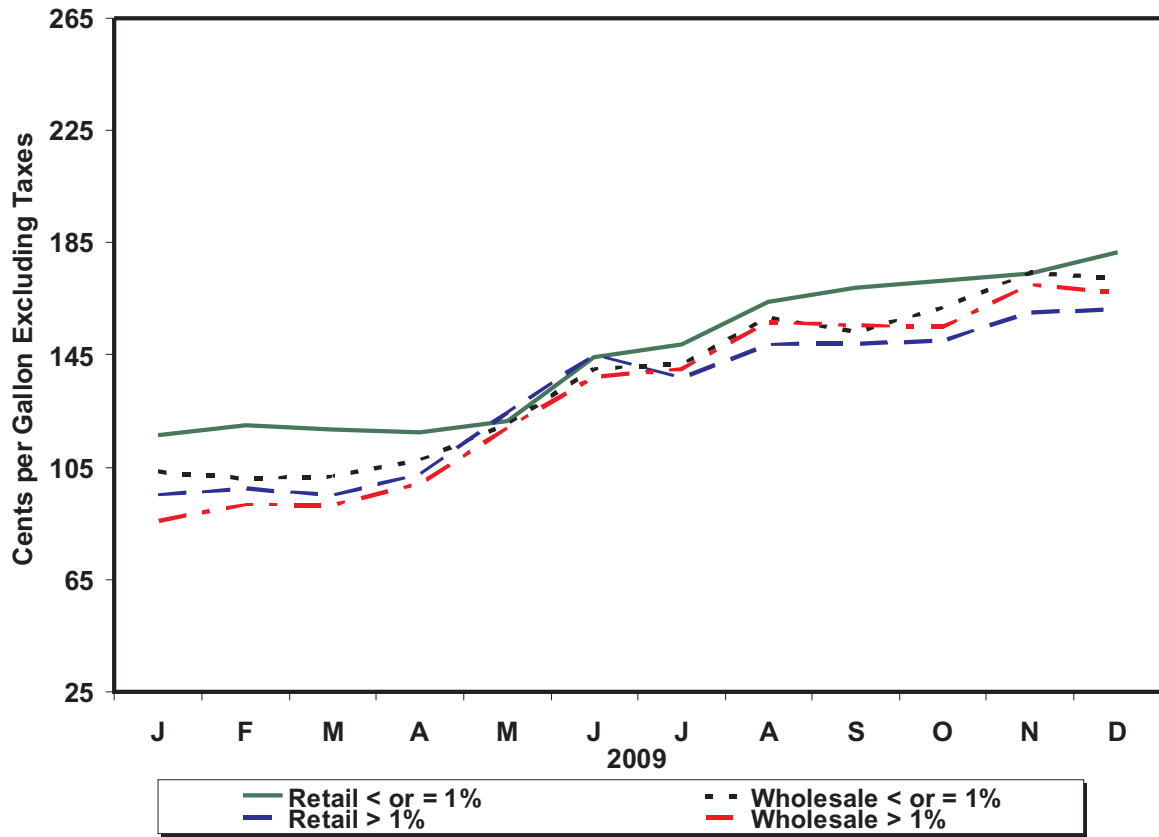
Source: Energy Information Administration, Form EIA-782A, "Refiners'/Gas Plant Operators' Monthly Petroleum Product Sales Report" and Form EIA-782B, "Resellers'/Retailers' Monthly Petroleum Product Sales Report."

Table 16. U.S. Refiner Residual Fuel Oil Prices
(Cents per Gallon Excluding Taxes)

Year Month	Sulfur Less Than or Equal to 1 Percent		Sulfur Greater Than 1 Percent		Average	
	Sales to End Users	Sales for Resale	Sales to End Users	Sales for Resale	Sales to End Users	Sales for Resale
1983	69.5	64.3	61.1	59.1	65.1	60.9
1984	72.0	68.5	65.9	63.9	68.7	65.4
1985	64.4	61.0	58.2	56.0	61.0	57.7
1986	37.2	32.8	31.7	28.9	34.3	30.5
1987	44.7	41.2	39.6	36.2	42.3	38.5
1988	37.2	33.3	30.0	27.1	33.4	30.0
1989	43.6	40.7	34.4	33.1	38.5	36.0
1990	50.5	47.2	40.0	37.2	44.4	41.3
1991	40.2	36.4	30.6	29.2	34.0	31.4
1992	38.9	35.1	31.2	28.6	33.6	30.8
1993	39.7	33.7	30.3	25.6	33.7	29.3
1994	40.1	34.5	33.0	28.7	35.2	31.7
1995	43.6	38.3	37.7	33.8	39.2	36.3
1996	52.6	45.6	43.3	38.9	45.5	42.0
1997	48.8	41.5	40.3	36.6	42.3	38.7
1998	35.4	29.9	28.7	26.9	30.5	28.0
1999	40.5	38.2	36.2	32.9	37.4	35.4
2000	70.8	62.7	56.6	51.2	60.2	56.6
2001	64.2	52.3	49.2	42.8	53.1	47.6
2002	64.0	54.6	54.4	50.8	56.9	53.0
2003	80.4	72.8	65.1	58.8	69.8	66.1
2004	83.5	76.4	69.2	60.1	73.9	68.1
2005	116.8	111.5	97.4	84.2	104.8	97.1
2006	134.2	120.2	117.3	108.5	121.8	113.6
2007						
January	117.2	101.5	100.6	93.0	105.8	97.6
February	121.4	117.2	108.2	100.0	112.6	107.3
March	122.1	117.1	111.4	100.8	115.0	107.6
April	125.8	124.4	118.2	108.4	120.9	115.0
May	135.9	131.1	128.1	120.0	130.0	123.8
June	142.1	135.7	132.5	124.3	135.7	128.0
July	153.9	146.1	138.3	132.1	141.5	137.8
August	158.4	143.6	141.9	132.6	146.2	136.7
September	161.0	147.4	141.0	133.7	145.0	139.3
October	166.1	164.7	154.2	147.5	157.3	153.6
November	183.2	183.9	179.6	169.2	180.3	174.2
December	194.8	194.8	179.7	169.0	184.2	176.5
2007	143.6	140.6	135.0	131.4	137.4	135.0
2008						
January	203.9	199.7	178.3	166.2	185.9	176.4
February	200.4	187.0	172.0	162.5	180.2	171.4
March	204.8	195.6	188.1	171.7	193.4	176.9
April	222.1	213.9	190.4	182.2	198.3	188.0
May	234.9	232.2	206.9	198.9	213.2	204.2
June	265.8	257.8	233.3	218.1	243.4	227.4
July	294.5	283.3	265.7	254.2	272.4	263.6
August	300.5	254.6	255.4	244.5	269.4	248.6
September	266.6	217.5	230.0	218.0	241.2	217.9
October	216.6	157.4	175.9	160.3	185.9	159.2
November	165.4	103.6	105.5	97.1	122.5	100.4
December	121.1	101.0	87.7	78.4	102.1	87.6
2008	214.4	191.8	188.9	184.3	196.4	186.6
2009						
January	116.4	103.5	95.3	86.1	104.9	92.6
February	120.0	101.1	97.4	91.8	106.8	95.4
March	118.3	101.9	95.2	91.7	103.0	95.2
April	117.4	107.7	102.7	99.2	106.6	101.7
May	121.3	120.5	124.5	119.1	123.4	119.5
June	144.0	140.1	145.1	137.3	144.7	138.1
July	148.8	141.7	136.9	140.0	140.4	140.5
August	164.1	158.4	148.8	156.7	153.6	157.2
September	168.9	153.1	149.1	155.6	154.0	154.9
October	171.7	161.9	150.1	154.9	155.2	156.0
November	173.9	174.3	160.2	170.0	164.2	171.1
December	181.3	172.3	161.4	167.3	167.4	168.5
2009	141.3	133.7	130.6	134.4	134.1	134.2

Sources: Energy Information Administration Form EIA-782A, "Refiners'/Gas Plant Operators' Monthly Petroleum Product Sales Report," January 1983 forward; Form EIA-460, "Petroleum Industry Monthly Report for Product Prices," source for backcast estimates prior to January 1983.

Figure 7. U.S. Refiner Residual Fuel Oil Prices and Volumes



Source: Energy Information Administration, Form EIA-782A, "Refiners' /Gas Plant Operators' Monthly Petroleum Product Sales Report."

Table 17. U.S. Refiner Residual Fuel Oil Volumes
(Million Gallons per Day)

Year Month	Sulfur Less Than or Equal to 1 Percent		Sulfur Greater Than 1 Percent		Total	
	Sales to End Users	Sales for Resale	Sales to End Users	Sales for Resale	Sales to End Users	Sales for Resale
1983	13.4	7.2	14.9	12.9	28.3	20.2
1984	15.1	6.7	17.8	14.6	32.9	21.3
1985	11.4	7.0	13.8	12.9	25.2	19.9
1986	15.2	7.9	16.4	10.7	31.6	18.6
1987	15.1	7.8	13.9	9.1	29.0	16.9
1988	14.2	8.7	15.9	10.3	30.2	18.9
1989	13.4	7.9	17.0	13.1	30.4	21.0
1990	11.1	7.4	14.9	10.5	25.9	17.9
1991	8.6	5.6	15.5	12.2	24.0	17.8
1992	7.1	5.2	15.3	10.0	22.4	15.2
1993	6.2	5.7	11.1	6.9	17.2	12.6
1994	4.2	6.6	9.3	6.2	13.5	12.8
1995	2.9	7.7	8.7	5.9	11.6	13.6
1996	3.1	6.3	9.8	7.4	12.9	13.8
1997	3.2	4.8	10.3	6.7	13.4	11.5
1998	3.9	5.7	10.5	9.6	14.4	15.4
1999	3.9	5.3	10.0	6.2	13.9	11.5
2000	3.3	4.9	9.8	5.6	13.1	10.5
2001	3.8	5.2	11.0	5.1	14.8	10.3
2002	2.7	5.1	7.8	3.7	10.4	8.8
2003	3.3	3.5	7.4	3.2	10.7	6.7
2004	3.4	2.9	6.8	3.0	10.2	5.9
2005	4.0	2.2	6.4	2.5	10.4	4.7
2006	2.8	2.8	7.6	3.6	10.4	6.5
2007						
January	3.8	4.7	8.4	3.9	12.2	8.5
February	4.3	3.1	8.5	4.2	12.8	7.3
March	3.8	3.0	7.7	4.2	11.5	7.3
April	4.6	3.4	8.4	4.7	13.0	8.0
May	2.7	2.7	8.3	5.2	11.0	7.9
June	3.4	2.2	6.9	4.5	10.3	6.7
July	2.3	3.0	8.9	4.4	11.2	7.5
August	2.6	3.6	7.2	5.9	9.7	9.5
September	2.1	3.2	8.6	4.7	10.7	7.9
October	2.6	3.2	7.6	6.0	10.2	9.2
November	2.0	3.4	7.5	6.6	9.6	10.1
December	2.7	2.5	6.3	6.2	9.1	8.7
2007	3.1	3.2	7.8	5.0	10.9	8.2
2008						
January	3.1	2.3	7.2	5.2	10.2	7.4
February	2.8	2.9	7.0	5.1	9.8	8.1
March	2.5	2.3	5.4	8.2	7.8	10.5
April	2.2	1.8	6.8	8.2	9.0	10.1
May	1.8	1.7	6.2	9.2	8.0	11.0
June	2.4	2.8	5.4	9.3	7.8	12.2
July	1.8	3.2	5.8	6.8	7.6	10.1
August	2.3	3.4	5.1	5.0	7.4	8.4
September	2.3	2.1	5.1	5.8	7.3	7.9
October	1.8	4.0	5.6	6.0	7.4	10.0
November	2.3	4.5	5.8	4.3	8.1	8.7
December	4.6	3.8	6.0	5.5	10.6	9.4
2008	2.5	2.9	5.9	6.6	8.4	9.5
2009						
January	5.7	3.3	6.8	5.5	12.5	8.8
February	4.1	3.6	5.8	5.8	9.8	9.4
March	2.8	3.8	5.6	7.3	8.4	11.1
April	1.9	2.3	5.5	5.4	7.4	7.7
May	2.5	2.6	4.9	6.4	7.3	9.1
June	2.8	2.6	4.9	6.2	7.8	8.9
July	2.5	3.4	5.9	7.0	8.4	10.3
August	2.5	3.3	5.3	7.6	7.7	10.8
September	1.9	2.6	5.9	7.0	7.8	9.5
October	1.9	1.8	6.0	9.0	7.9	10.8
November	2.4	2.7	5.8	7.8	8.2	10.4
December	2.8	2.4	6.5	8.1	9.3	10.5
2009	2.8	2.9	5.7	6.9	8.5	9.8

Note: Totals may not equal the sum of the components due to rounding.

Source: Energy Information Administration Form EIA-782A, "Refiners'/Gas Plant Operators' Monthly Petroleum Product Sales Report."