



FEMA



# Disaster Scenario Exercise for Community Planning Critical Power Failure FEMA 2011

EXERCISE

EXERCISE

EXERCISE



# Purpose

- Why are we investing this time?
- Where is your organization in emergency planning?
- Do we have unidentified gaps?
- Have we considered all populations?



EXERCISE

EXERCISE

EXERCISE



# Agenda

- Overview of modules
- Hotwash
- Introductions



**FEMA**

EXERCISE

EXERCISE

EXERCISE



# Objectives

- Exercise teamwork: Public Sector + Private Sector = Resilient Communities.
- Provide us tools for emergency planning, and a forum for discussing and developing emergency plans
- Test assumptions



FEMA

EXERCISE

EXERCISE

EXERCISE



# Rules for Players

- Relax – this is a no-fault exercise.
- Respond based on your current capability.
- Allow for artificialities of the scenario – it's a tool.
- Feel free to improvise – think outside the box.
- This is a safe environment, a chance to propose and test solutions.
- The more you contribute, the more successful we will be.



FEMA

EXERCISE

EXERCISE

EXERCISE



# Our Community

- Critical Infrastructure and Key Resources
- Economic Development Overview including key sectors, schools and colleges
- Maps
- Weather/Climate
- Hospitals, fire, police, rescue
- Local and state resources



FEMA

EXERCISE

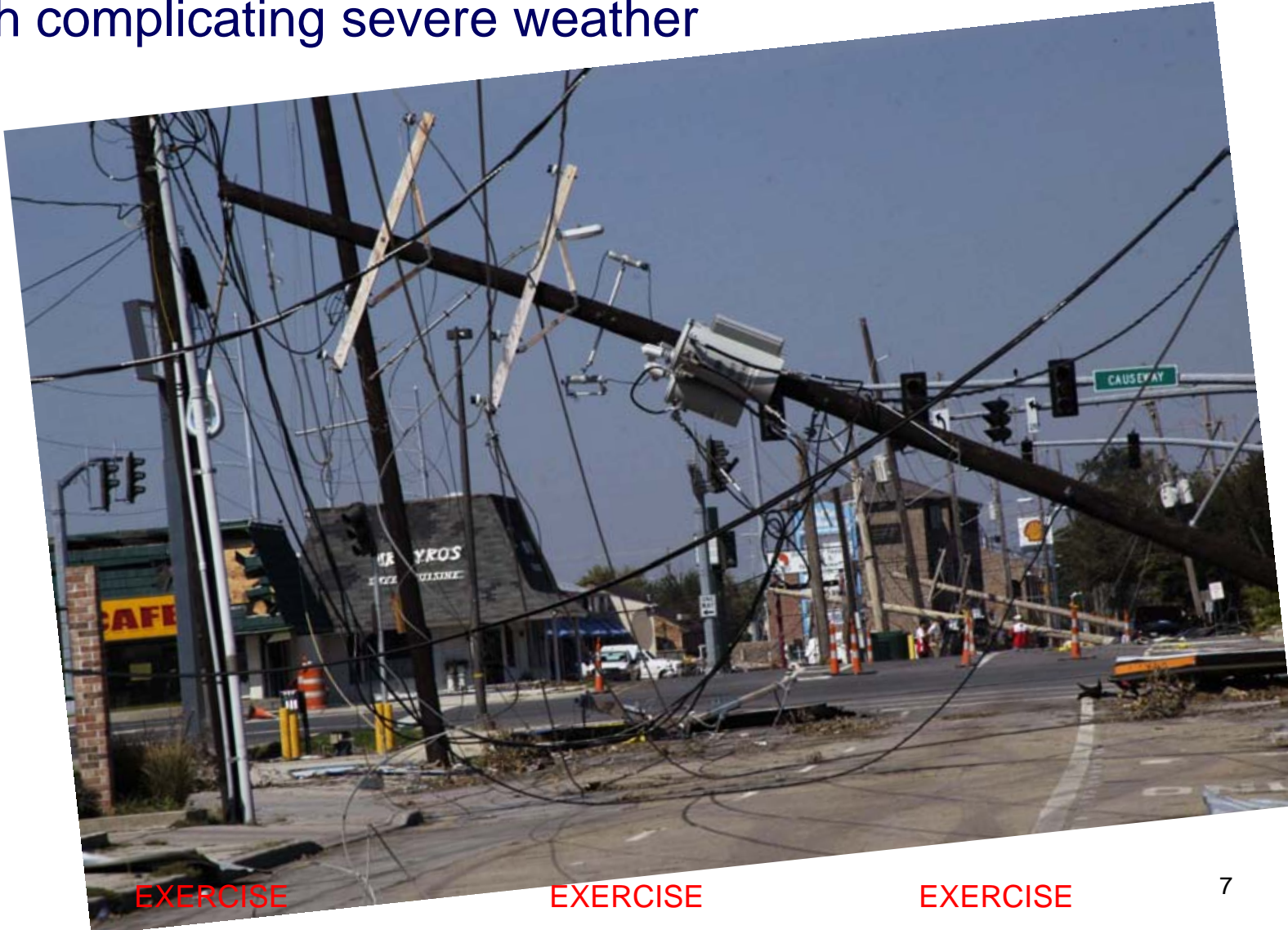
EXERCISE

EXERCISE



# Scenario: Critical Power Failure

- With complicating severe weather



EXERCISE

EXERCISE

EXERCISE



# Emergency Management

- Prepare and Protect
- Respond
- Recover
- Mitigate
- Overview of National Response Framework, National Incident Management System, and Incident Command System



EXERCISE

EXERCISE

EXERCISE





# Prepare and Protect

- Have a plan, activate it
- Gather the planning team
- Assess hazards, prepare facilities and people
- Confirm and check evacuation plans and routes
- Stock and check supplies and first aid
- Monitor incident development
- Activate Response Teams
- Coordinate among public sector agencies and private sector organizations



EXERCISE

EXERCISE

EXERCISE



# VNN

- **Click to Play News:**





# Prepare & Protect - Discussion

- What are our priorities?
- What are our initial actions?
- What message do we need to communicate, and to whom? What if systems fail?
- Who are vulnerable populations, who may require aid? How will we deliver it?
- What are the hazards?
- What are our needs for supplies, etc.?



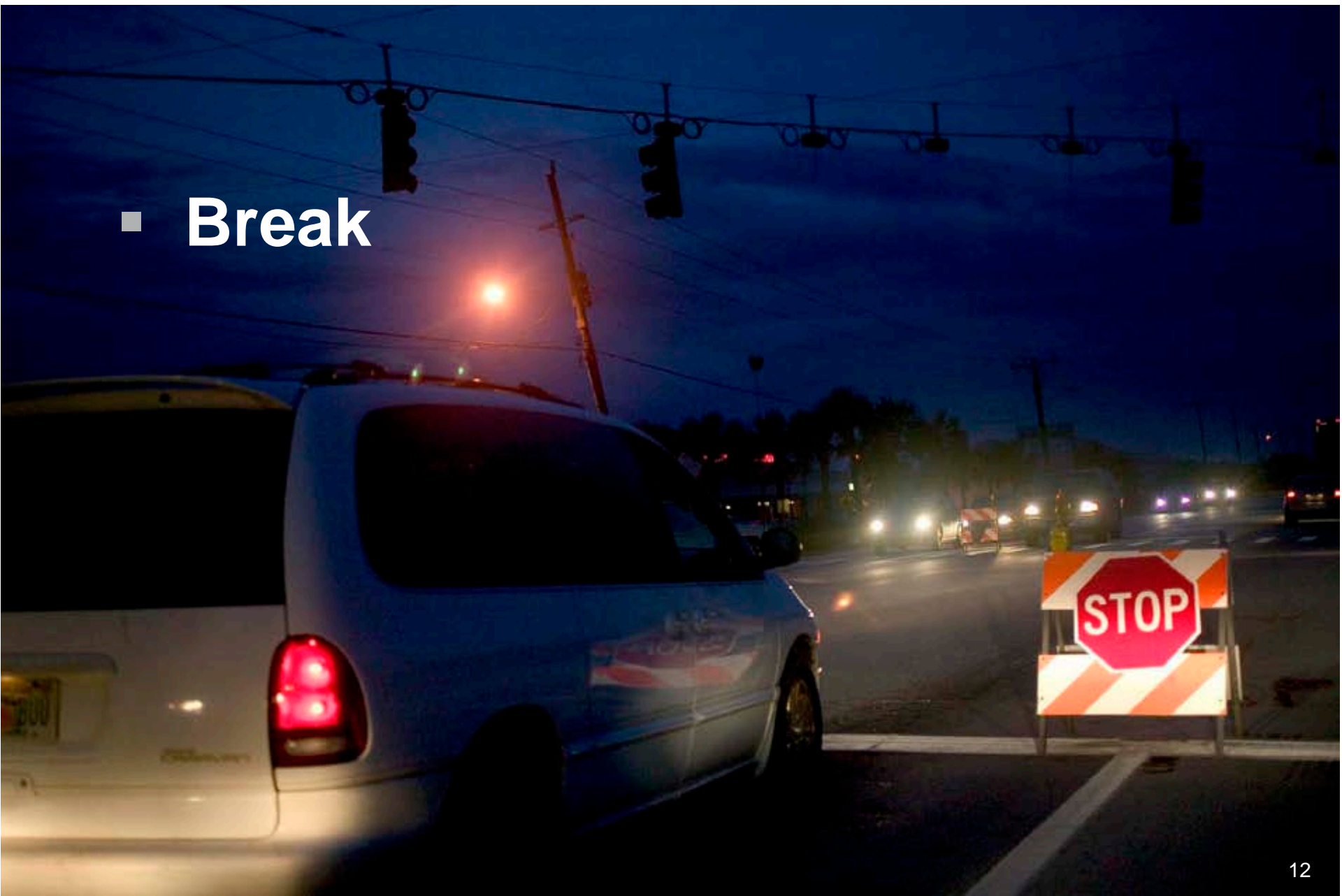
EXERCISE

EXERCISE

EXERCISE



- Break





# Respond

- Mobilize and position emergency equipment
- Evacuate or shelter-in-place
- Provide food, water, shelter, medical services
- Initiate continuity plans
- Assess and restore damaged services and systems
- Coordinate among local responders, government agencies, and private sector organizations



EXERCISE

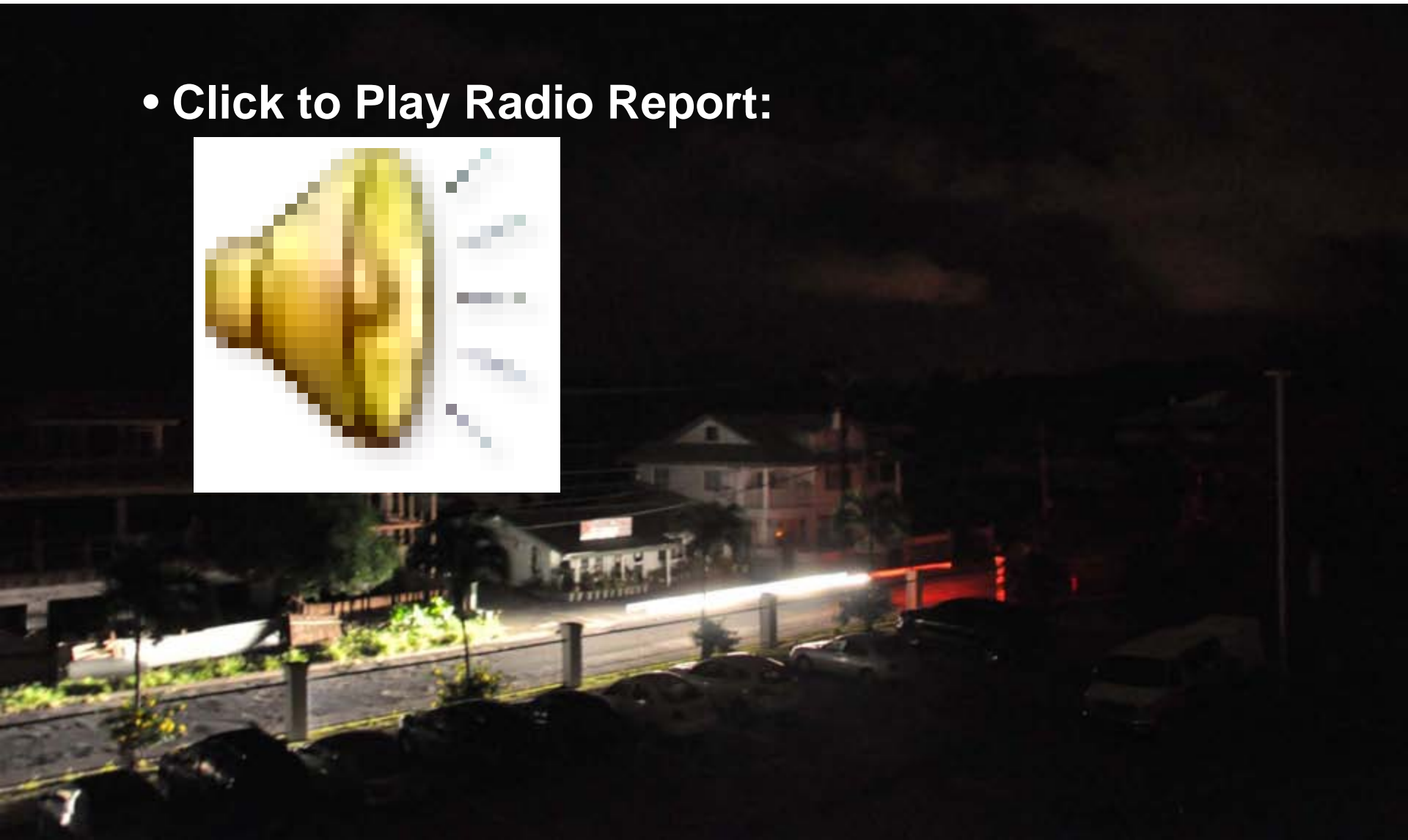
EXERCISE

EXERCISE



# VNN

- Click to Play Radio Report:



EXERCISE

EXERCISE

EXERCISE



# Respond - Discussion

- Transportation
- Incident Command
- Operating Locations
- Staffing Needs
- Security Concerns
- Emergency Supplies
- Communication/Messaging



FEMA

EXERCISE

EXERCISE

EXERCISE

# Local Government Emergency Text Alert



EXERCISE

EXERCISE

EXERCISE



# VNN Emergency Text Alert



EXERCISE

EXERCISE

EXERCISE



# Twitter Post



Search

The best way to discover what's new in your world.

## Top Tweets [View all](#)



**GeauxSaints** It's Crazy! Wind just blew the roof off three houses on Elm St!!! Armageddon headed our way. Take cover

[3 minutes ago](#)

EXERCISE

EXERCISE

EXERCISE



# Respond - Discussion

- Information Reliability
- Alternative Communications
- Government Capabilities
- Public Capabilities
- Options



**FEMA**

EXERCISE

EXERCISE

EXERCISE



# Recover

- Provide relief
- Distribute disaster assistance
- Assess damage
- Form community committee to plan long-term recovery
- Restore community tax base and local economy
- Repair infrastructure
- Restore housing



EXERCISE

EXERCISE

EXERCISE



# VNN

## ■ Click to Play News:



EXERCISE

EXERCISE

EXERCISE



# Recover - Discussion

- How will we repair structural and physical damage?
- How will we restore disrupted services?
- How will we address health and safety hazards?
- How will we limit economic loss? Limit loss to property
- How will we return to the economic base prior to the outage?
- Are there any gaps or redundancies in our roles?



EXERCISE

EXERCISE

EXERCISE



# Mitigate

- What hazards have been identified in the community?
- What steps can we take to mitigate risks?
- What steps is the community taking to mitigate community-wide risks?
- How can private sector organizations work with public sector officials?



FEMA

EXERCISE

EXERCISE

EXERCISE



# Hot Wash

- What gaps in our organization/community plans were revealed?
- What obstacles must we overcome or conflicts resolve?
- What strengths in our organization/community plans were proven by this exercise?
- Who within and outside of our organizations do we need to meet with to develop and improve our emergency plans? What information do you need from them?
- List three to five short-term and three to five long-term actions for follow-up.







# Planning Resources

- <http://www.ready.gov>
- [http:// www.fema.gov](http://www.fema.gov)
- <http://www.fema.gov/privatesector/>
- <http://Training.fema.gov>
- Community Resources



FEMA

EXERCISE

EXERCISE

EXERCISE



# Contact

For more information or to provide feedback on this exercise, contact:

FEMA

Office of External Affairs, Private Sector Division

500 C St. SW

Washington, DC

Email [FEMA-private-sector@dhs.gov](mailto:FEMA-private-sector@dhs.gov)



EXERCISE

EXERCISE

EXERCISE