

2011 EIA Energy Conference: The Future of Domestic Onshore Oil and Gas



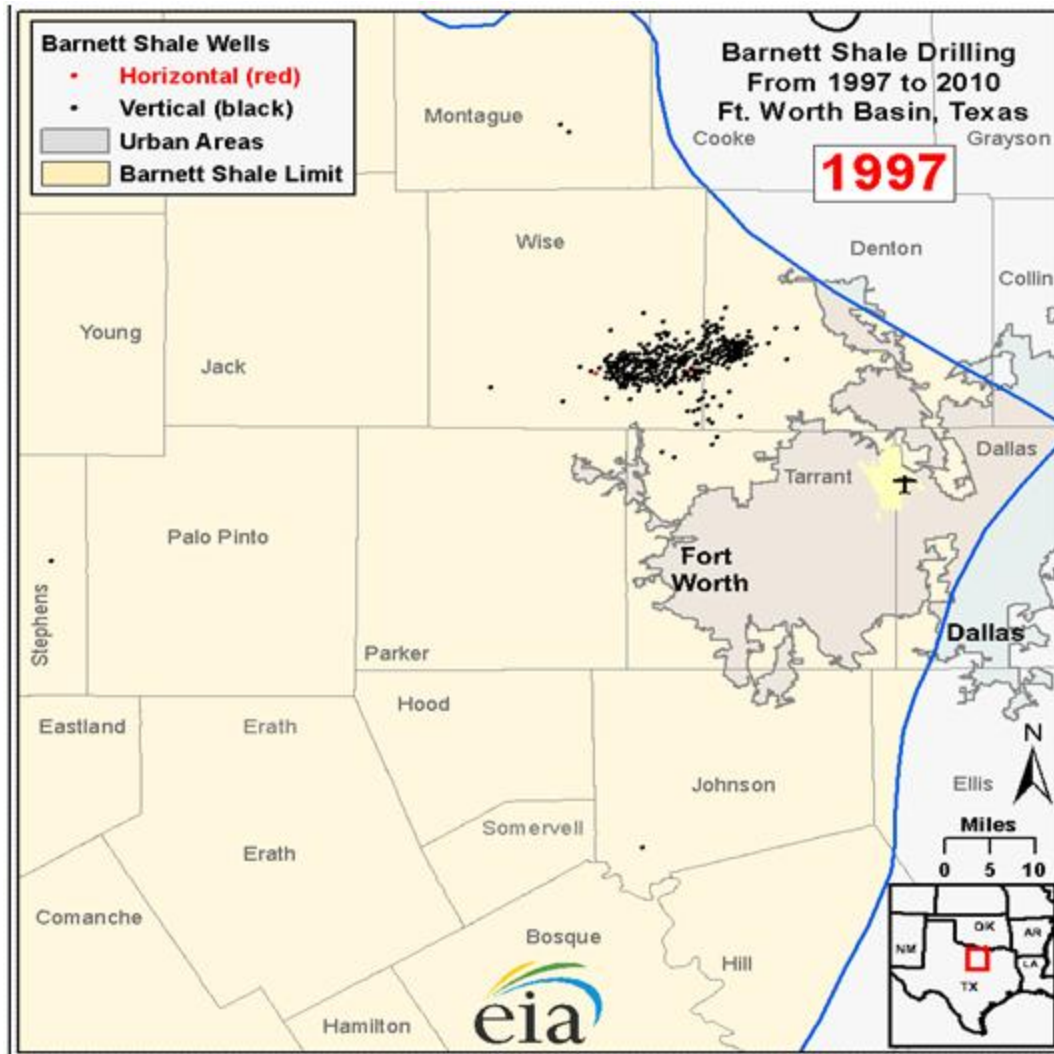
Moderator: Charlie Whitmore

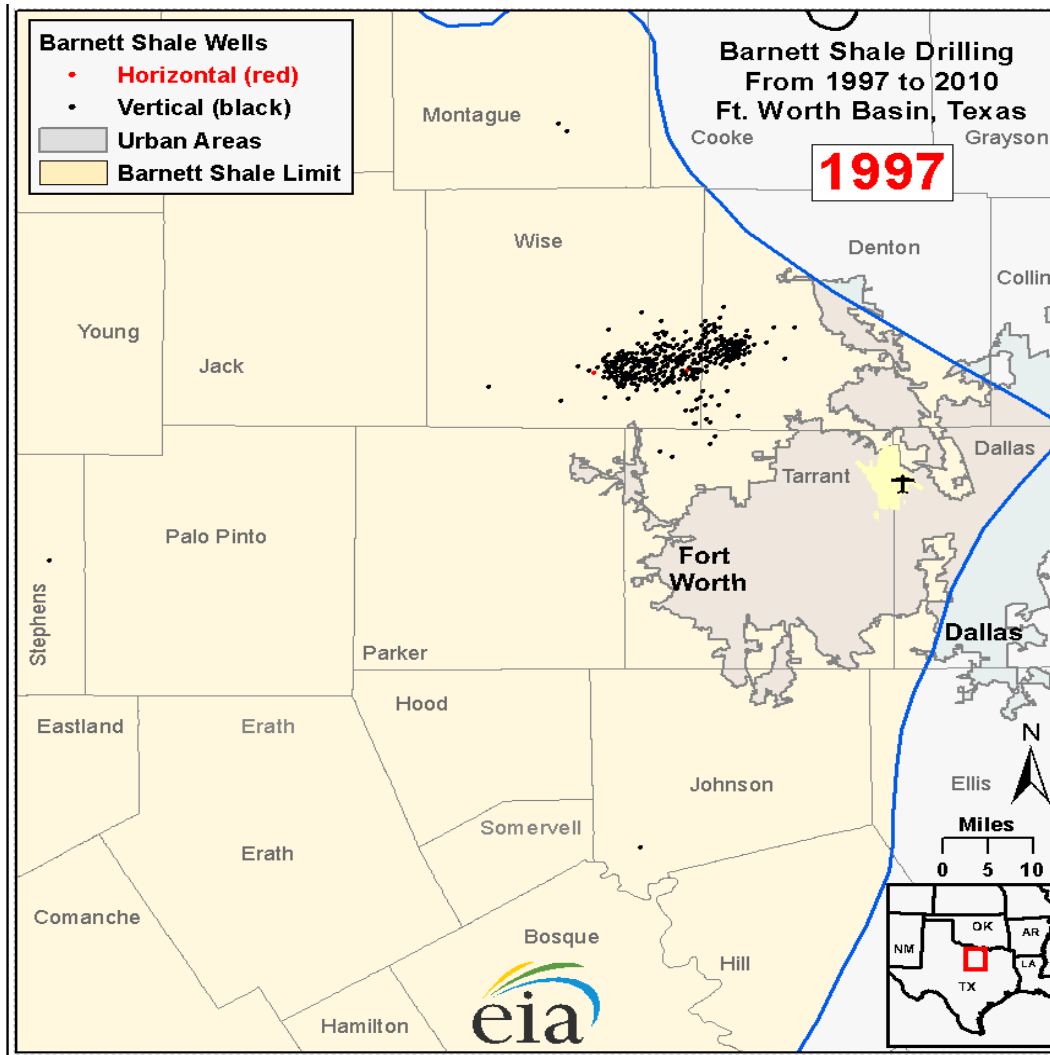
Porter Bennett, BENTEK Energy

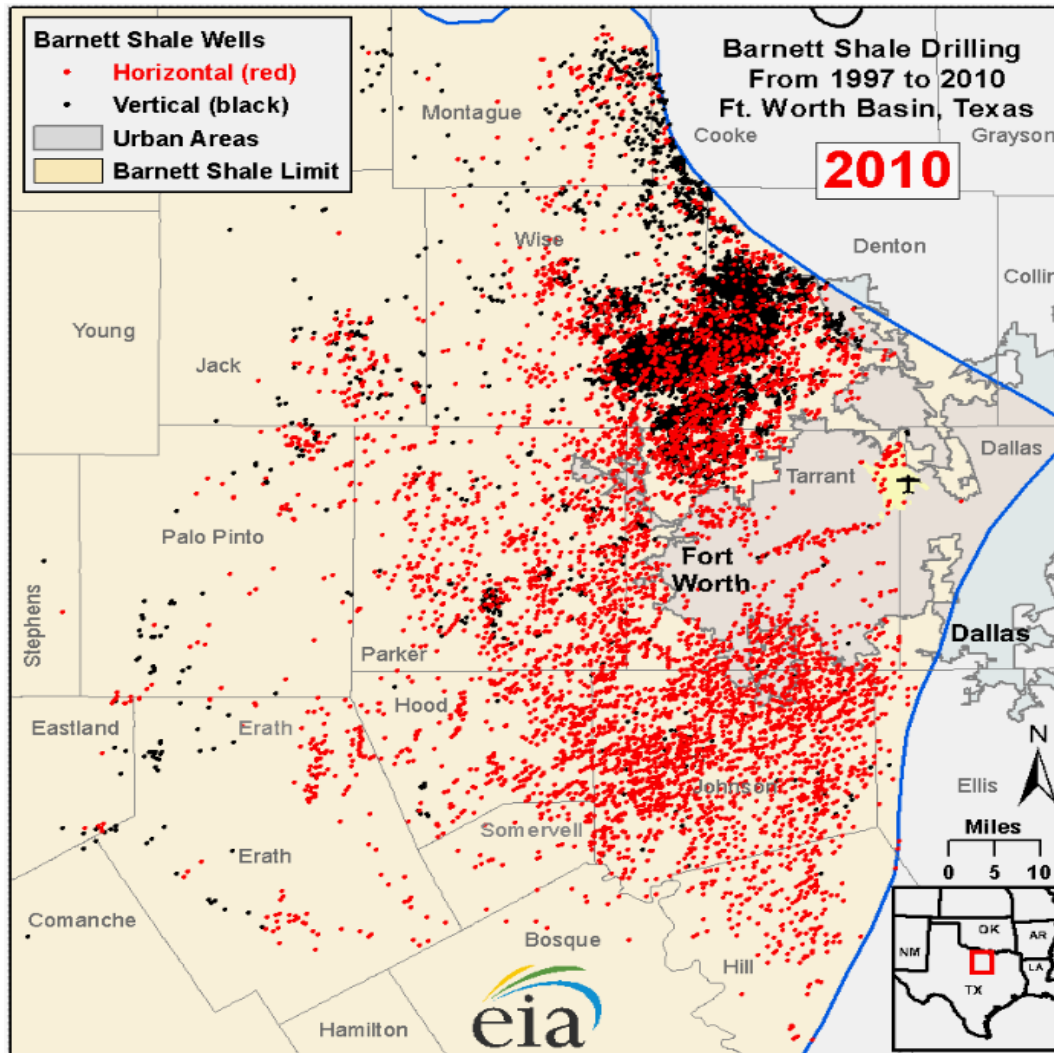
James Sorenson, University of North Dakota

John Steelman, Natural Resources Defense Council

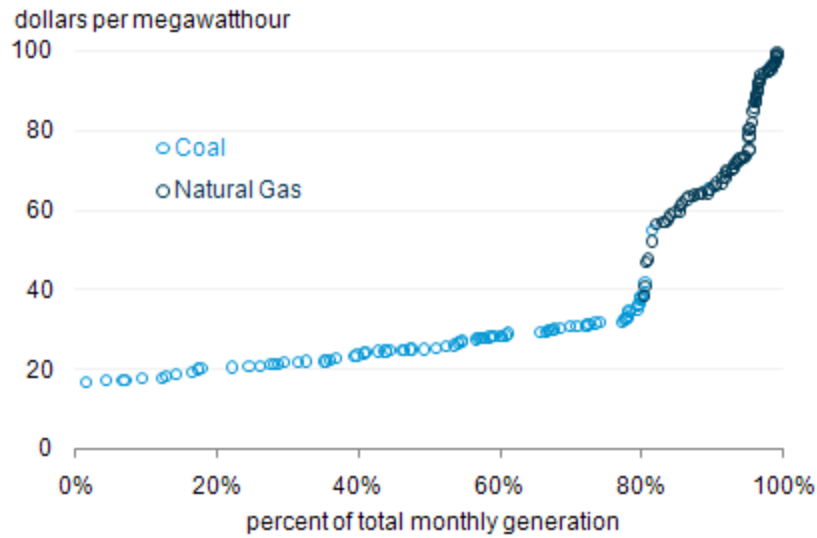
Washington DC | April 27, 2011



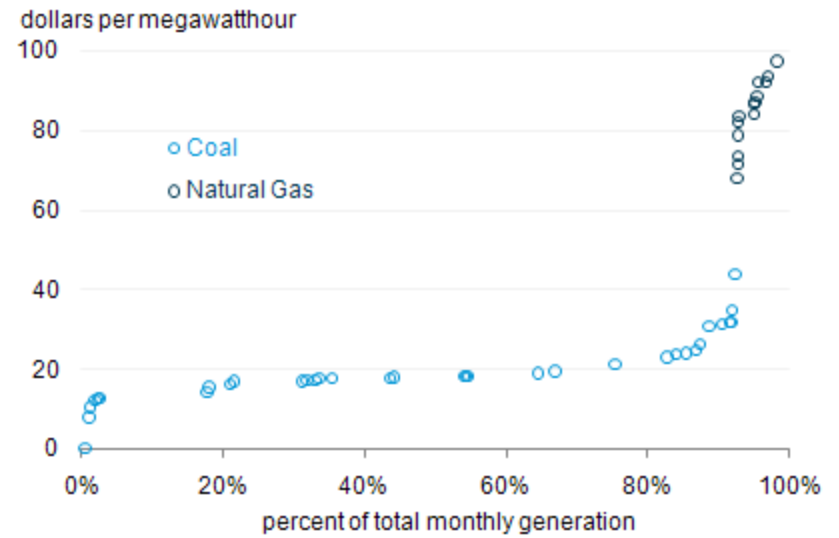




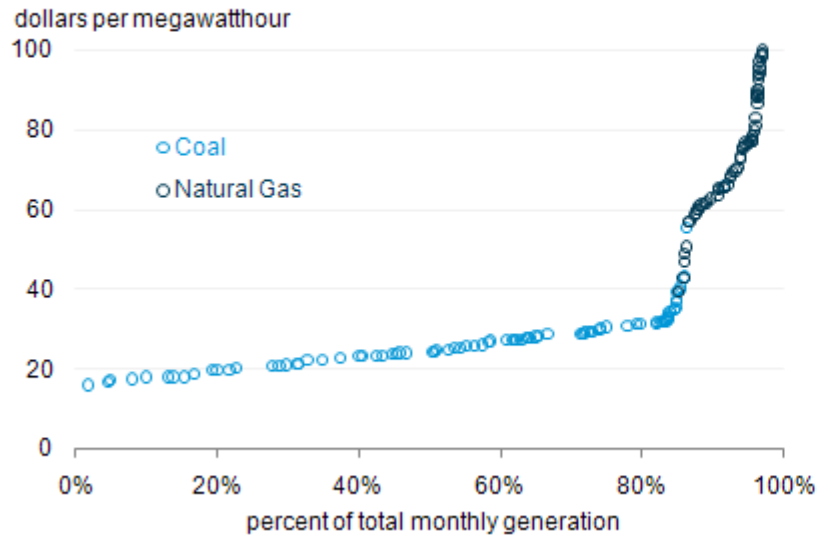
Electric supply curve (South): Jan 2008



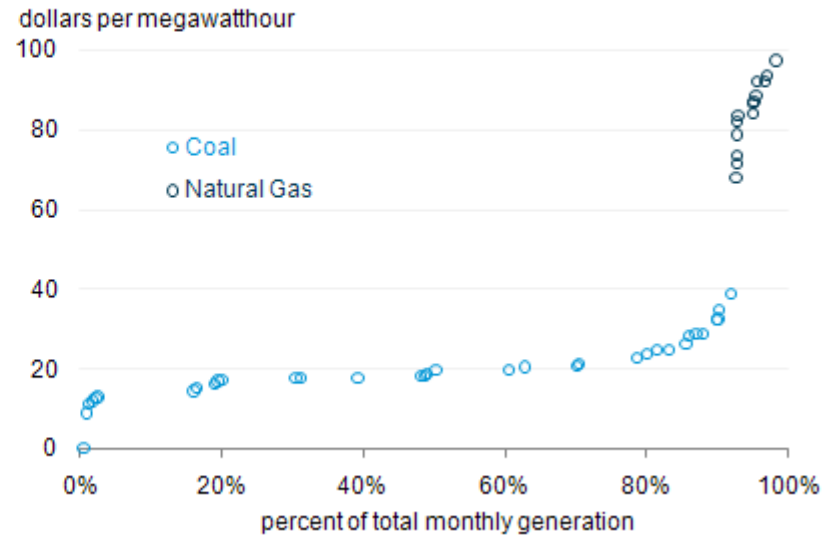
Electric supply curve (PA): Jan 2008



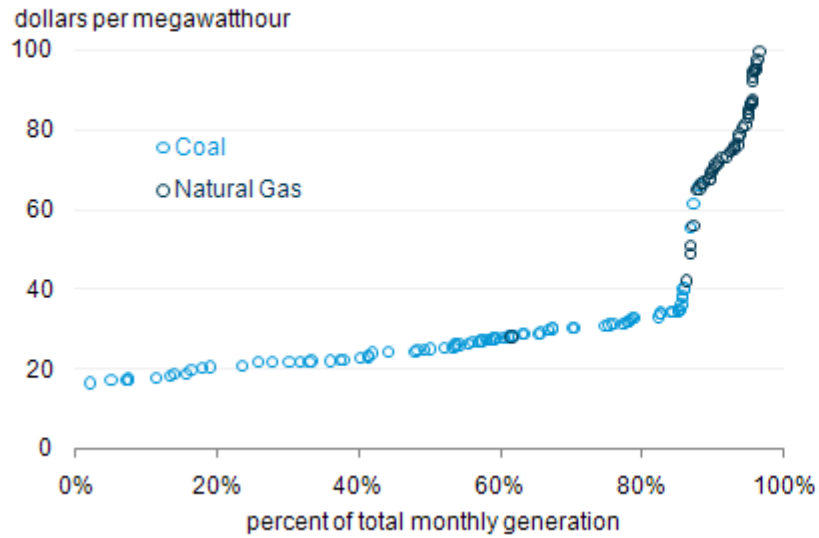
Electric supply curve (South): Feb 2008



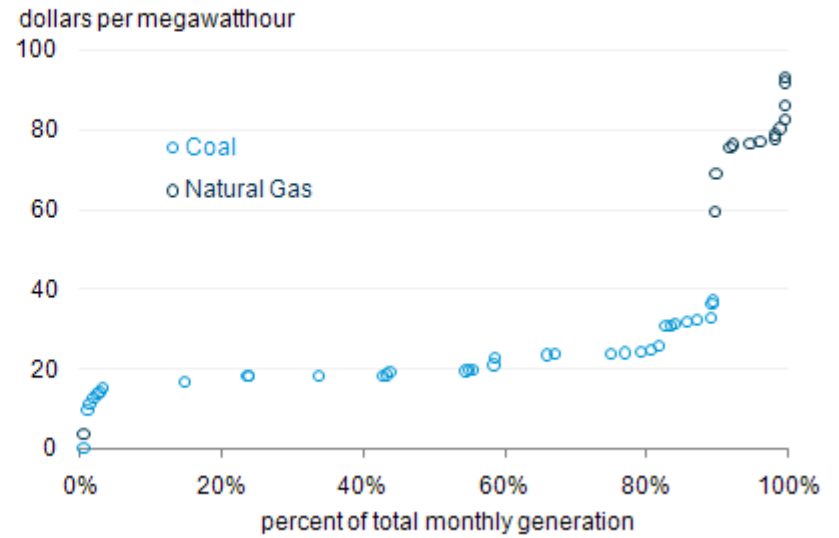
Electric supply curve (PA): Feb 2008



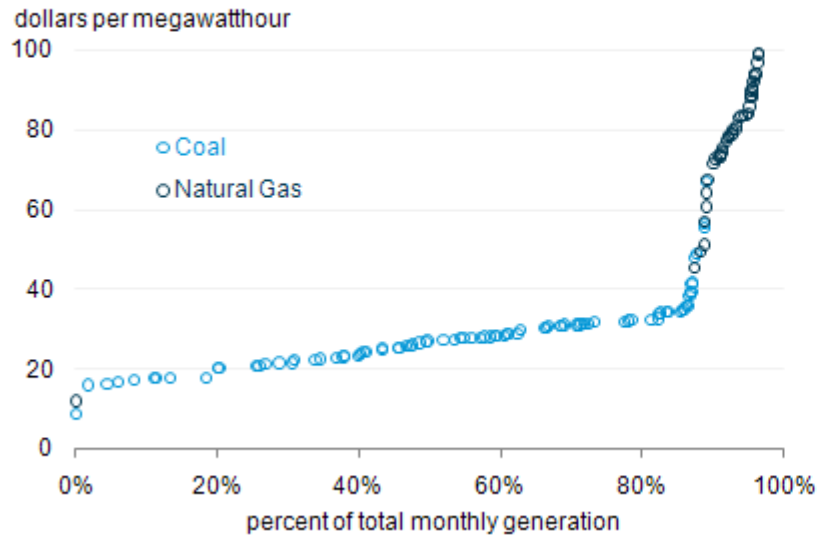
Electric supply curve (South): Mar 2008



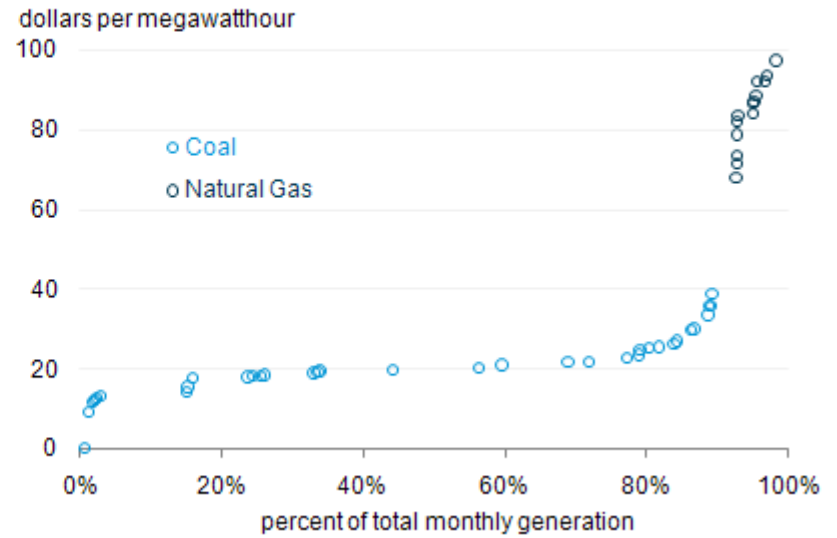
Electric supply curve (PA): Mar 2008



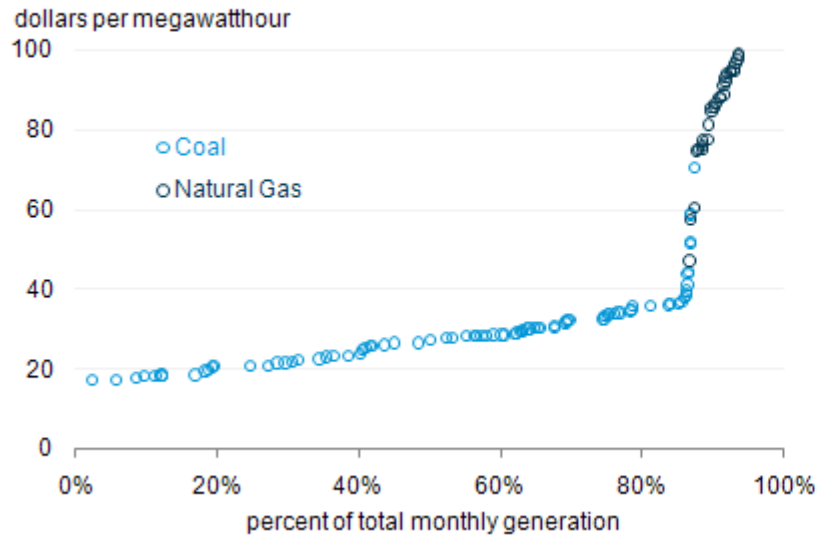
Electric supply curve (South): Apr 2008



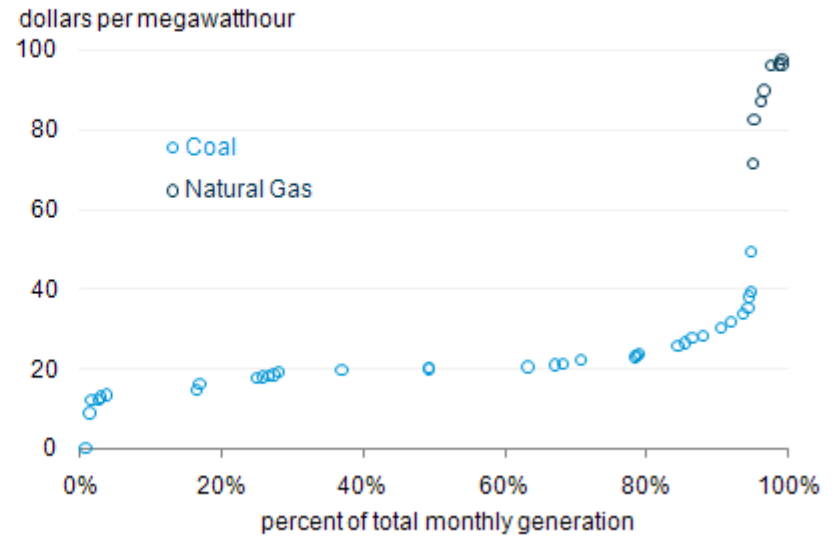
Electric supply curve (PA): Apr 2008



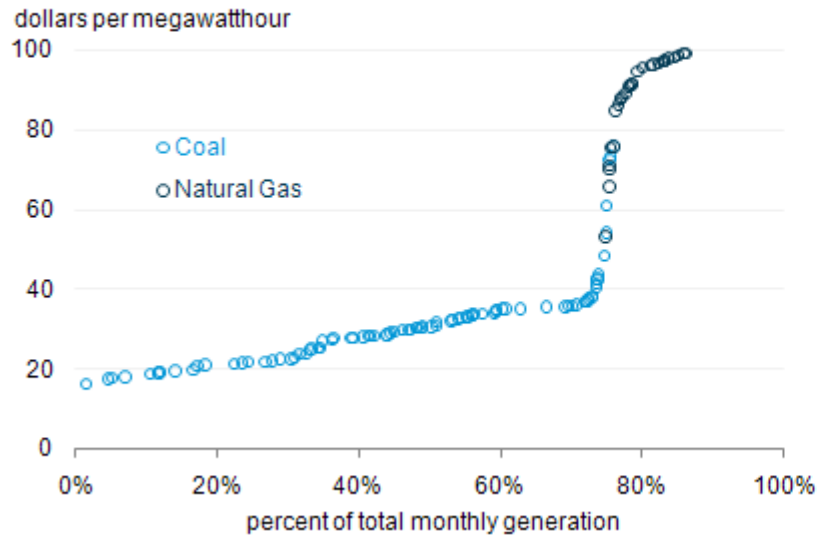
Electric supply curve (South): May 2008



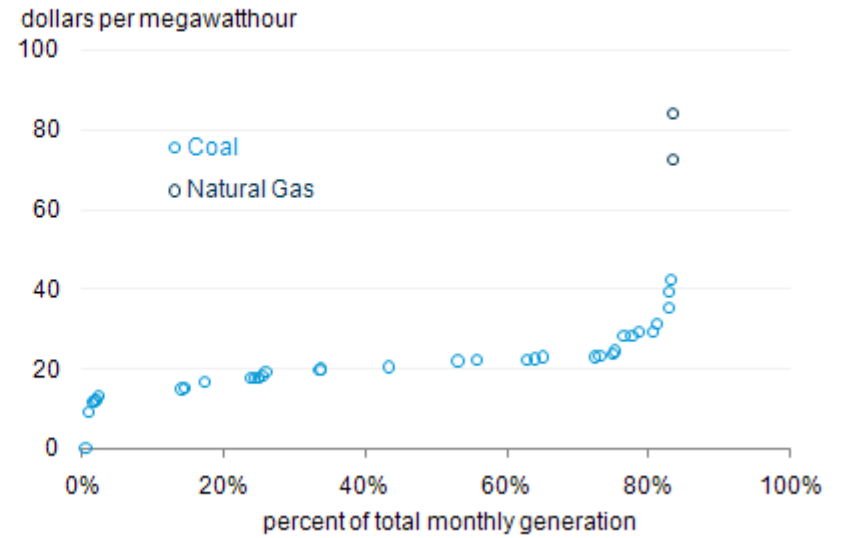
Electric supply curve (PA): May 2008



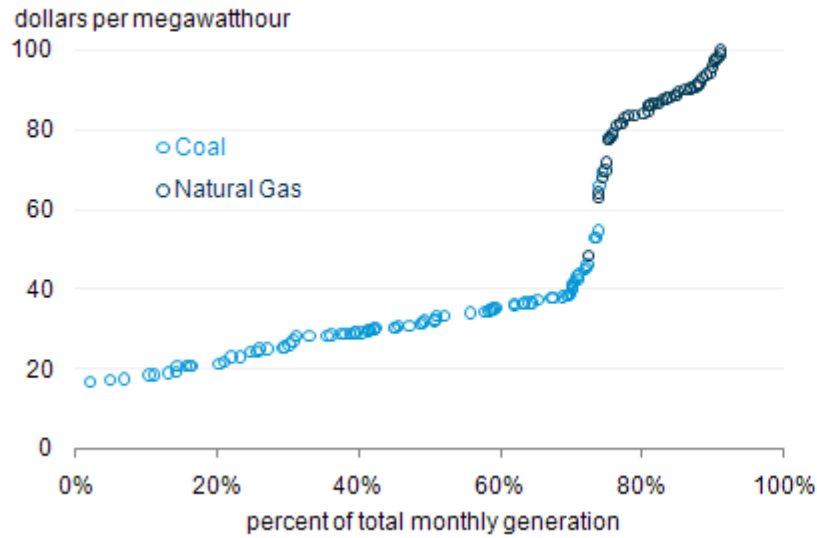
Electric supply curve (South): Jun 2008



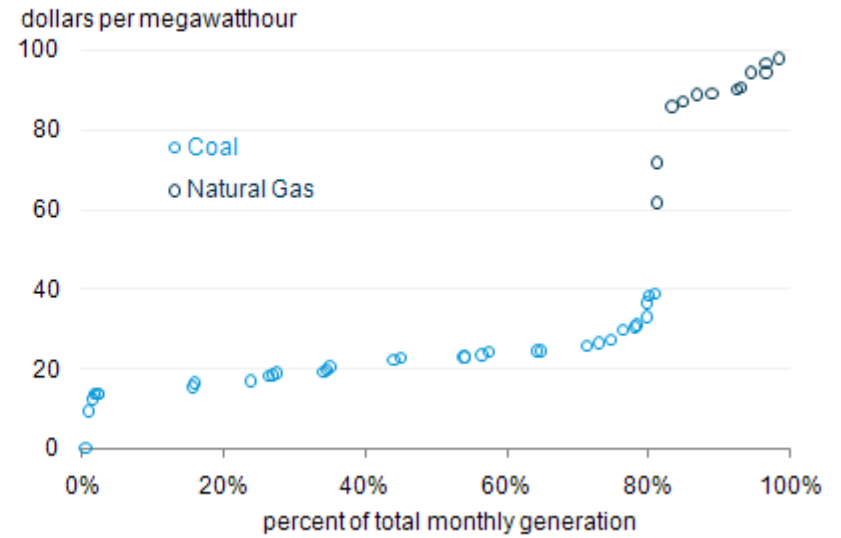
Electric supply curve (PA): Jun 2008



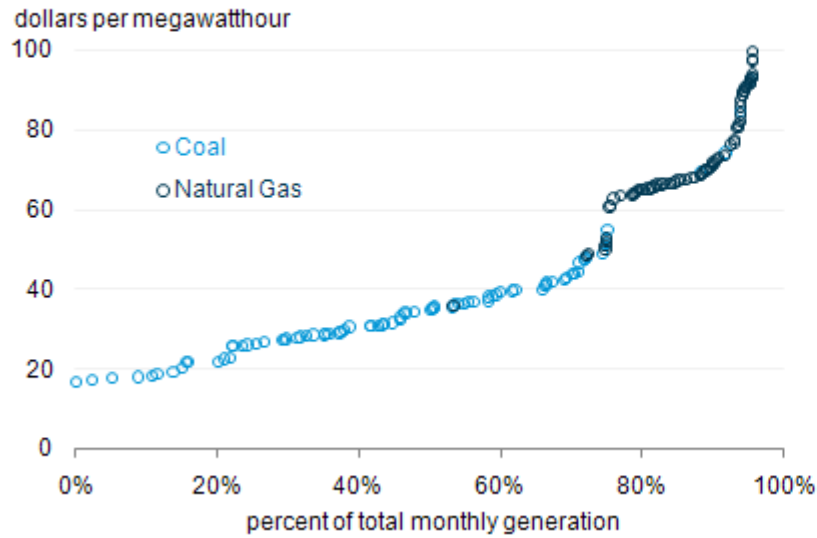
Electric supply curve (South): Jul 2008



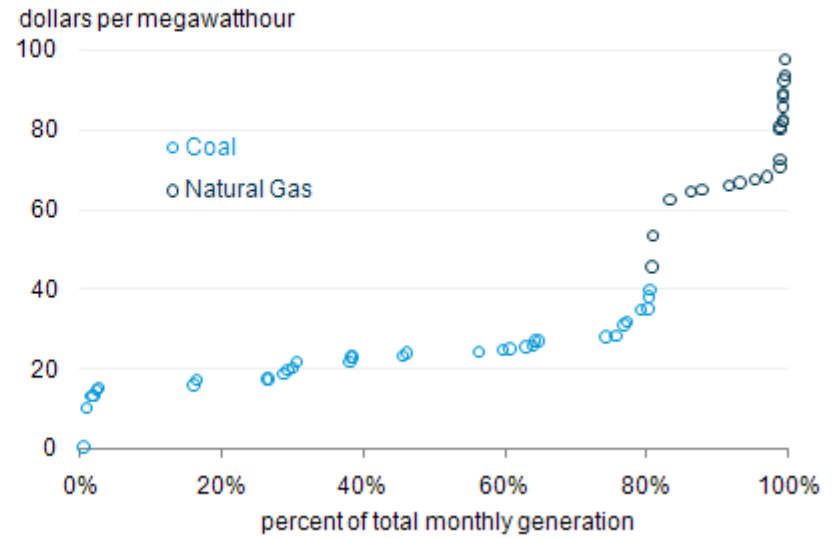
Electric supply curve (PA): Jul 2008



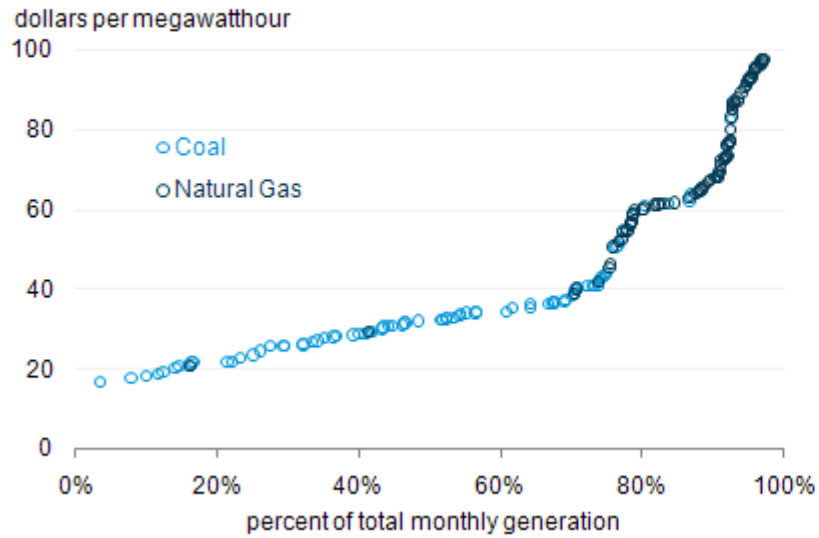
Electric supply curve (South): Aug 2008



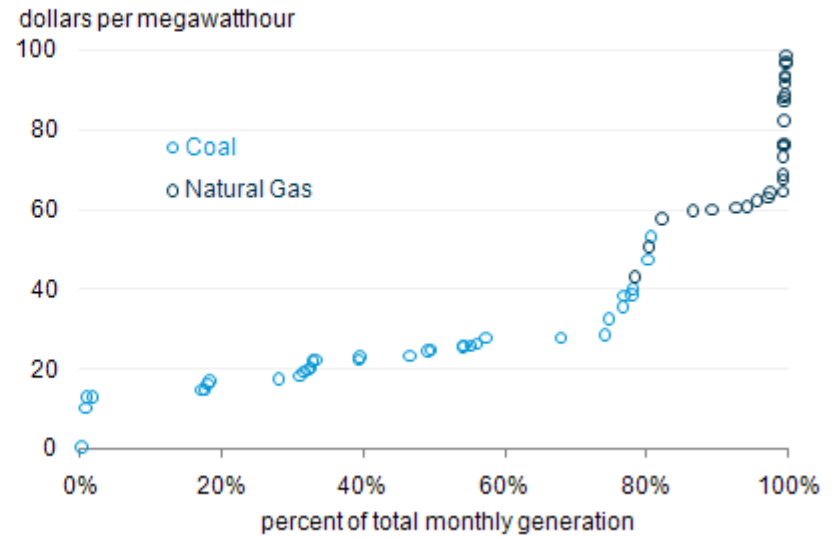
Electric supply curve (PA): Aug 2008



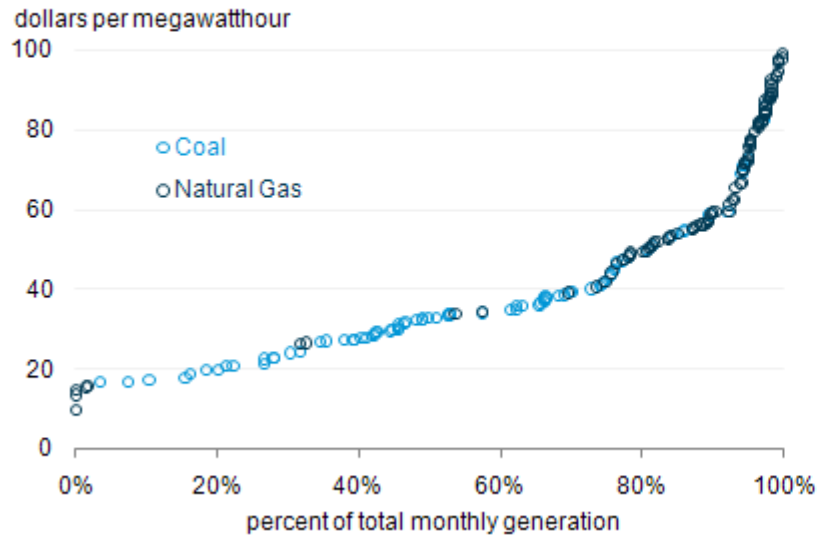
Electric supply curve (South): Sep 2008



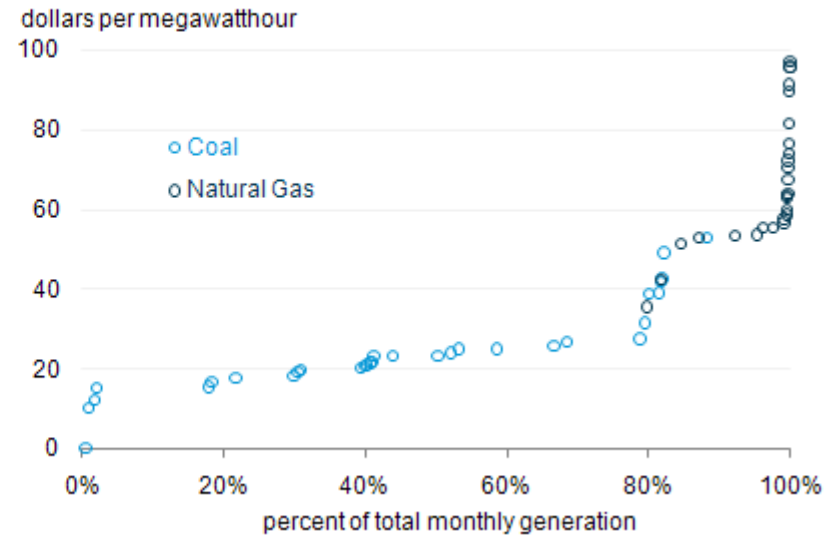
Electric supply curve (PA): Sep 2008



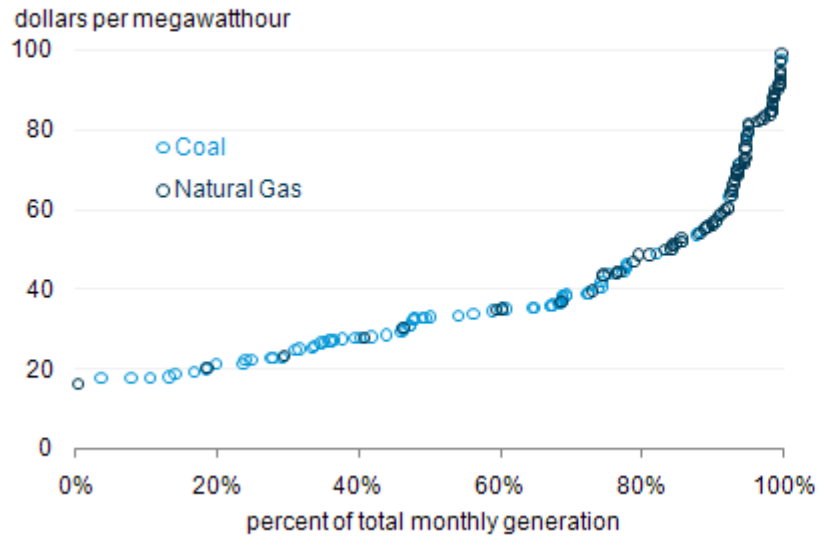
Electric supply curve (South): Oct 2008



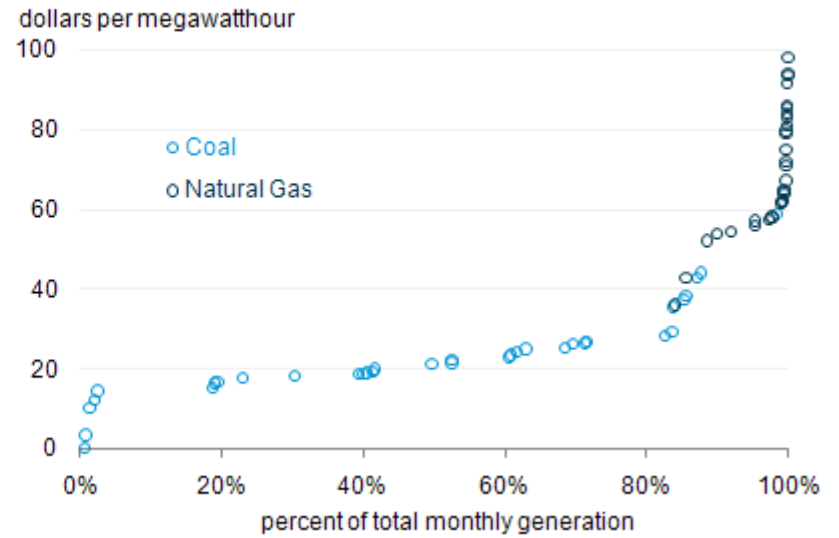
Electric supply curve (PA): Oct 2008



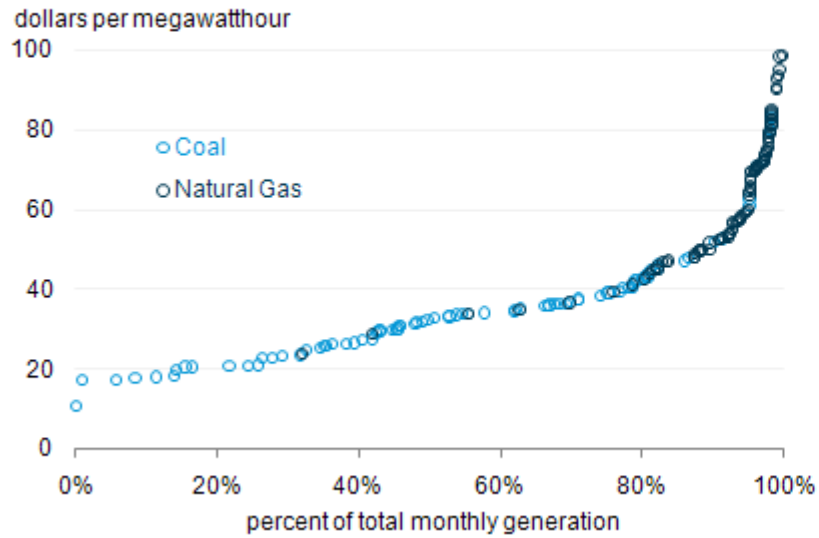
Electric supply curve (South): Nov 2008



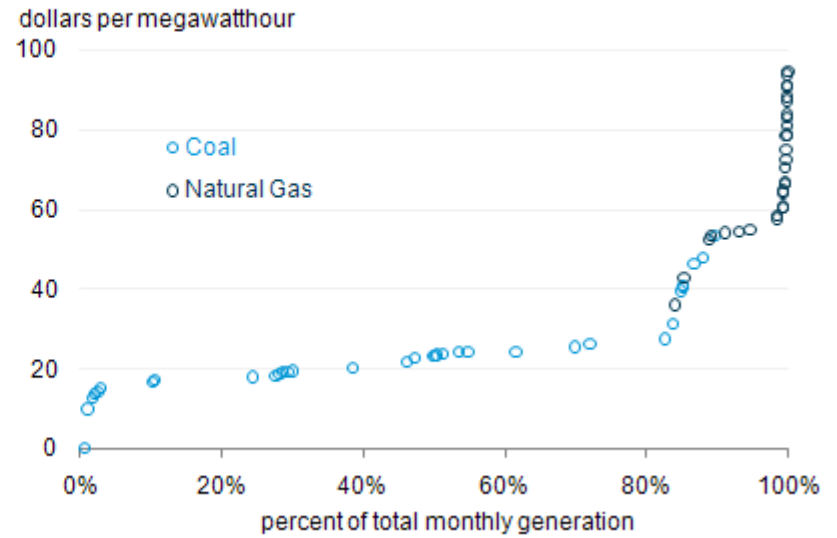
Electric supply curve (PA): Nov 2008



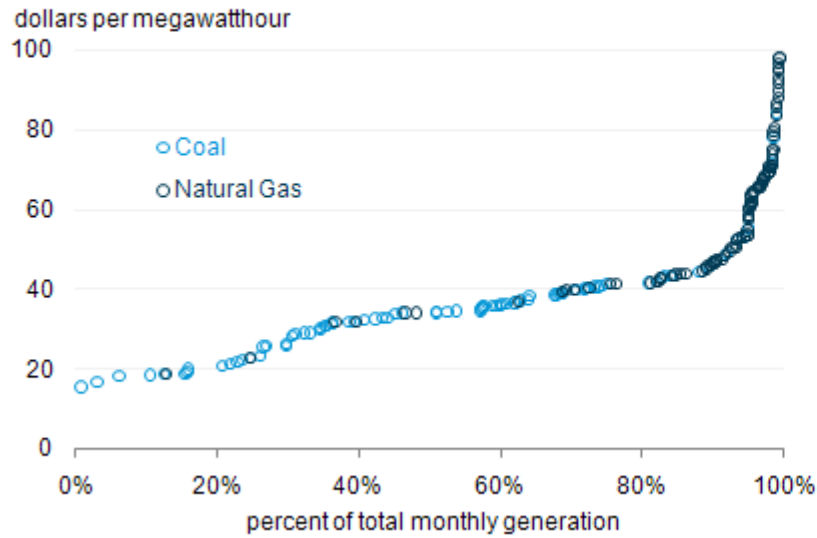
Electric supply curve (South): Dec 2008



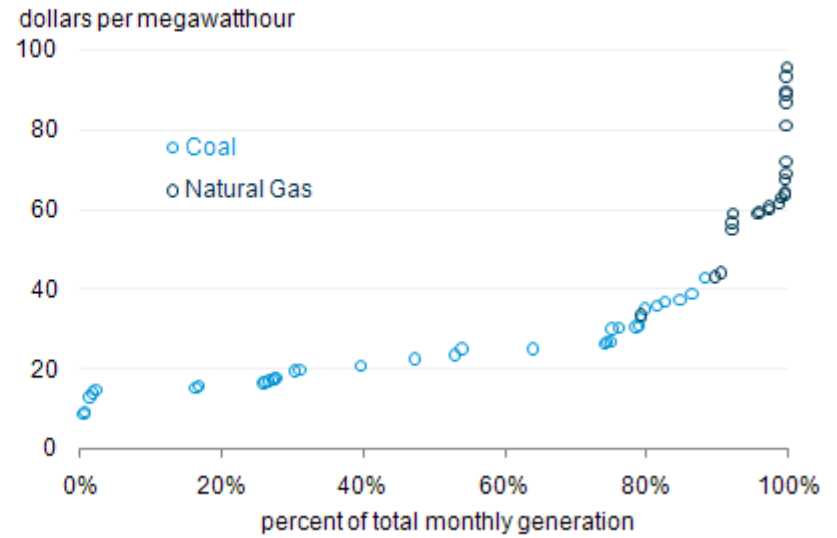
Electric supply curve (PA): Dec 2008



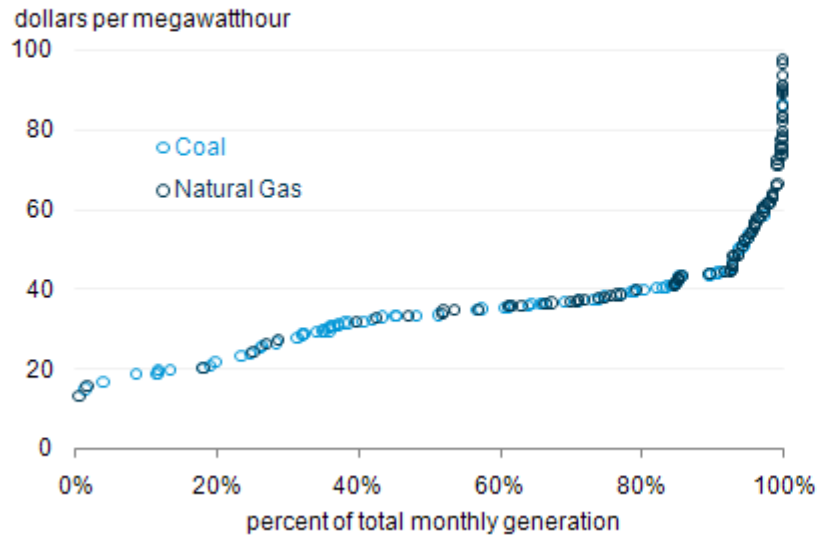
Electric supply curve (South): Jan 2009



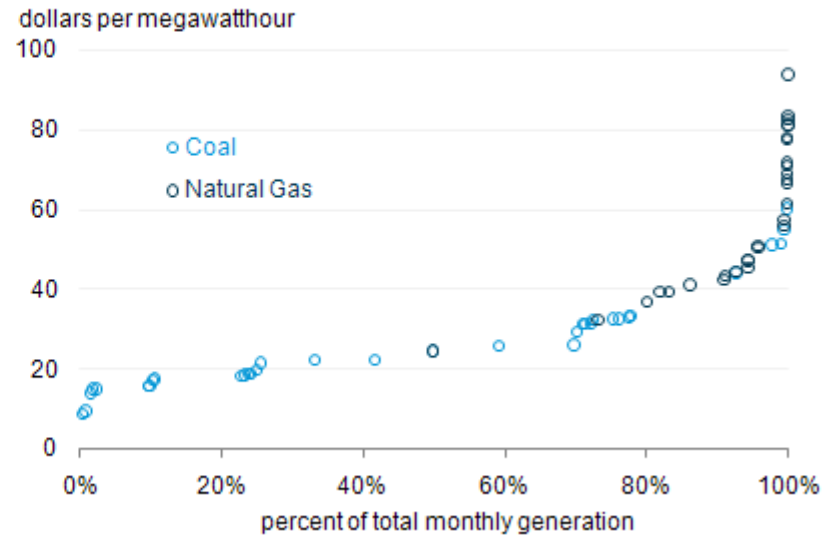
Electric supply curve (PA): Jan 2009



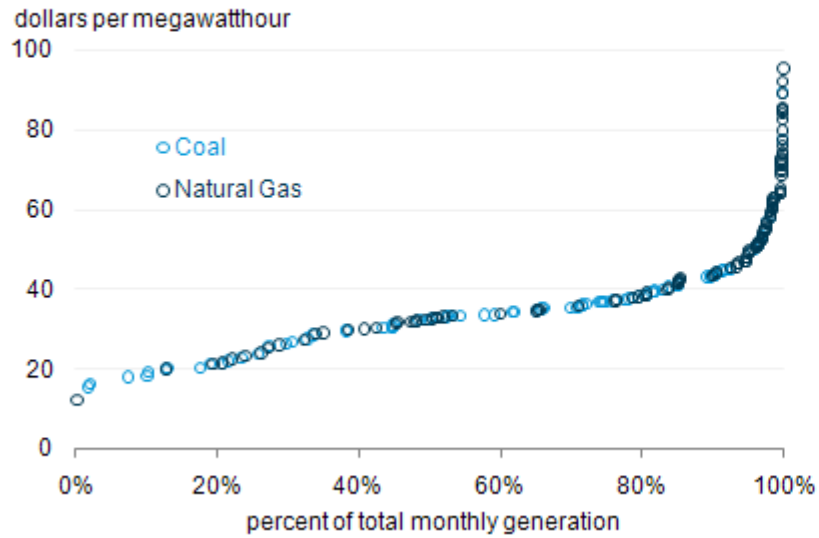
Electric supply curve (South): Feb 2009



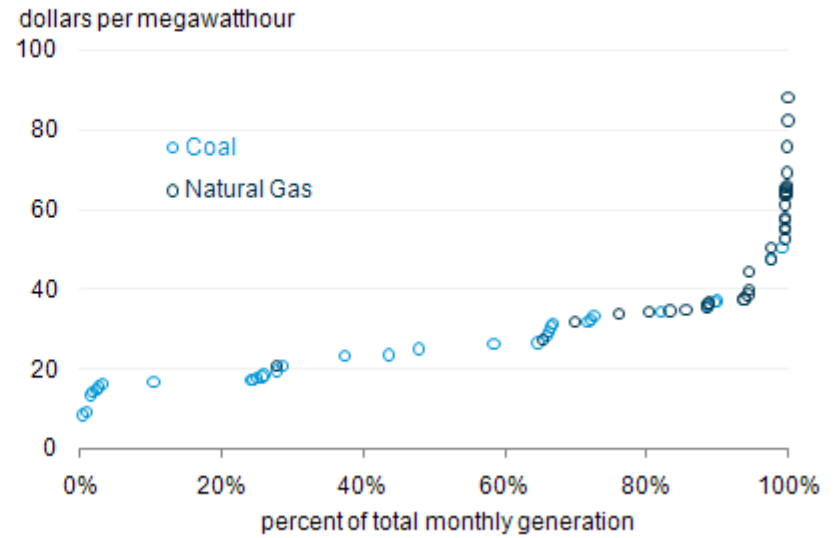
Electric supply curve (PA): Feb 2009



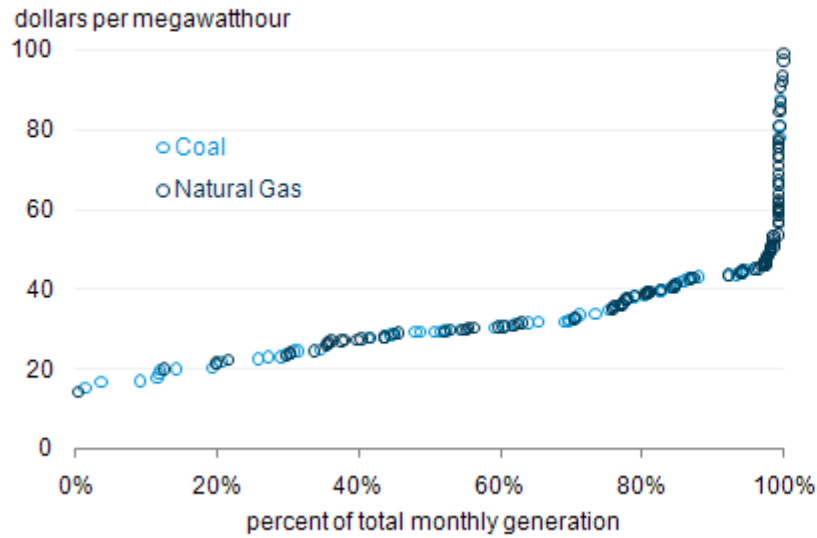
Electric supply curve (South): Mar 2009



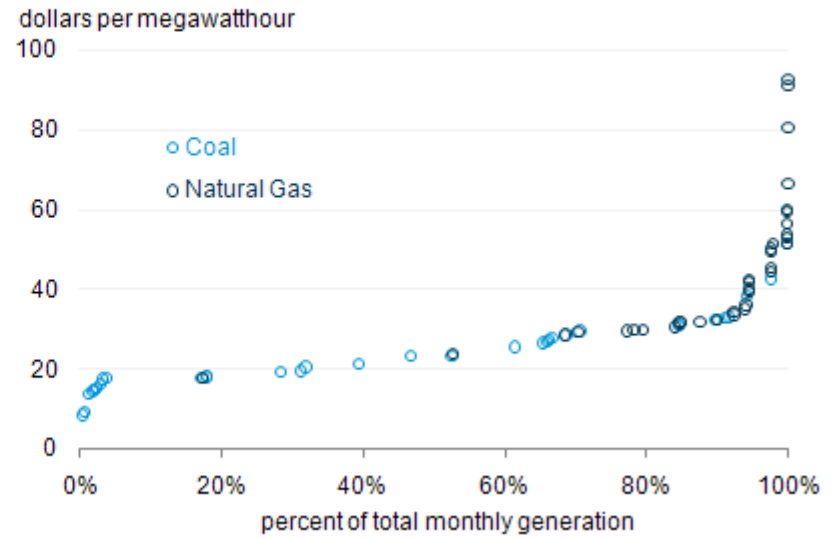
Electric supply curve (PA): Mar 2009



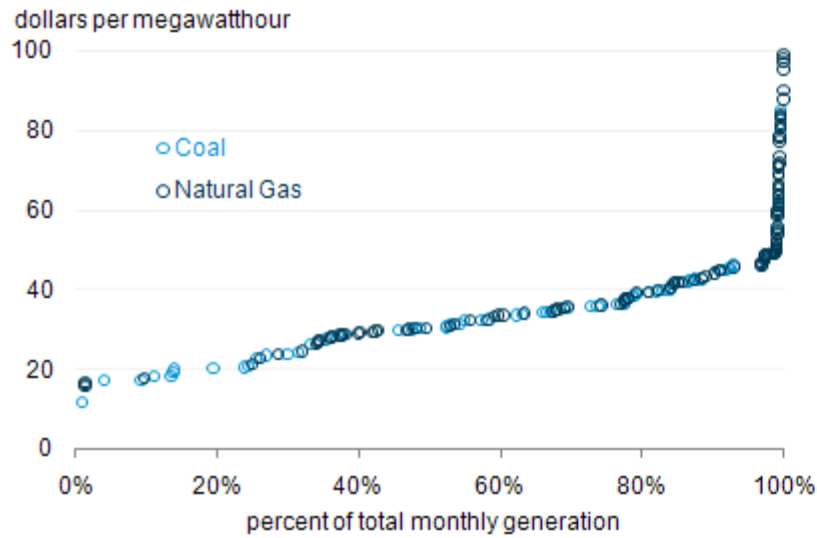
Electric supply curve (South): Apr 2009



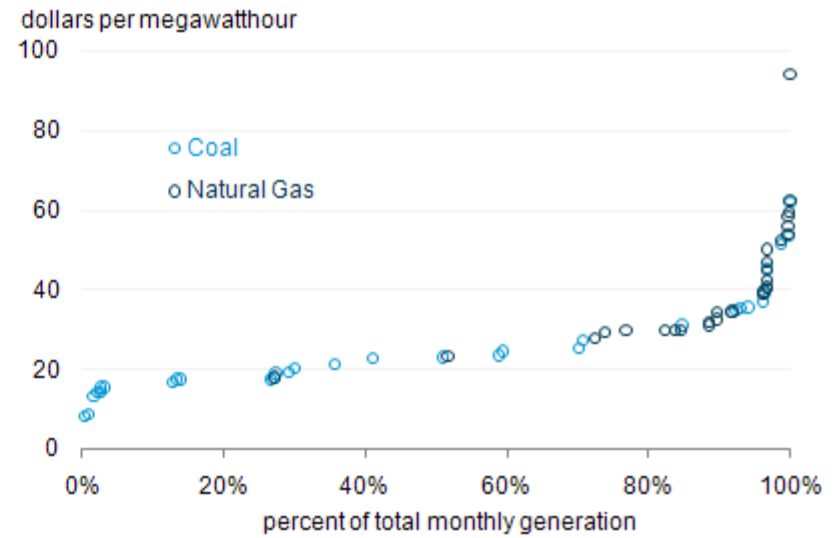
Electric supply curve (PA): Apr 2009



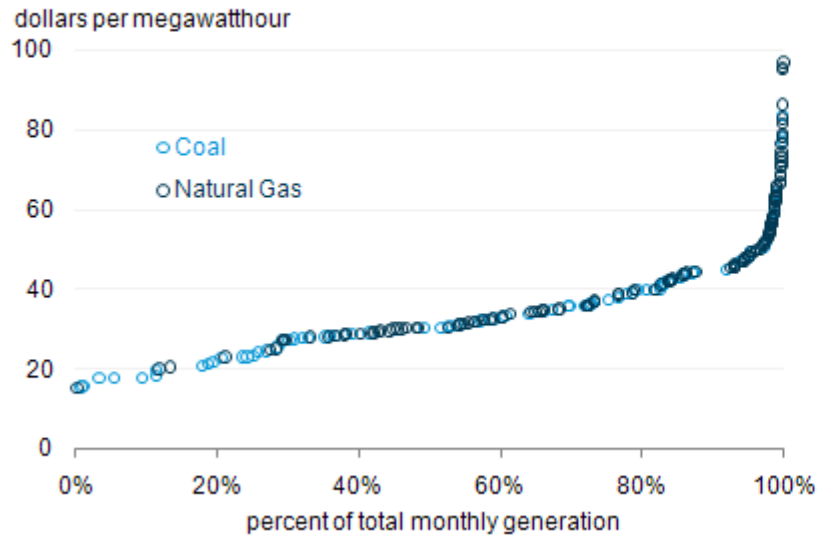
Electric supply curve (South): May 2009



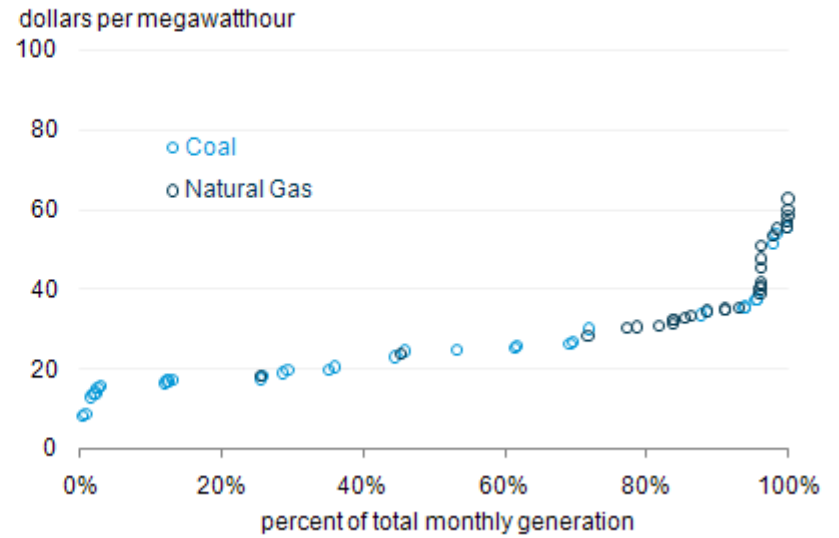
Electric supply curve (PA): May 2009



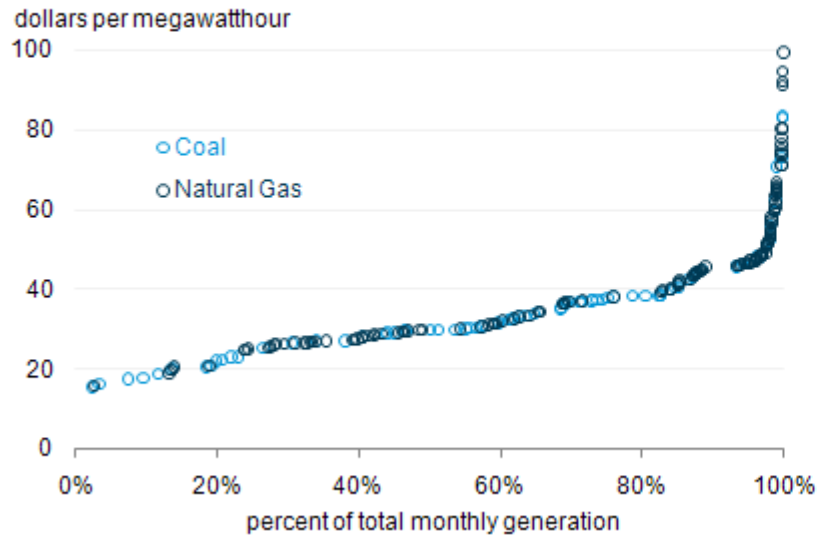
Electric supply curve (South): Jun 2009



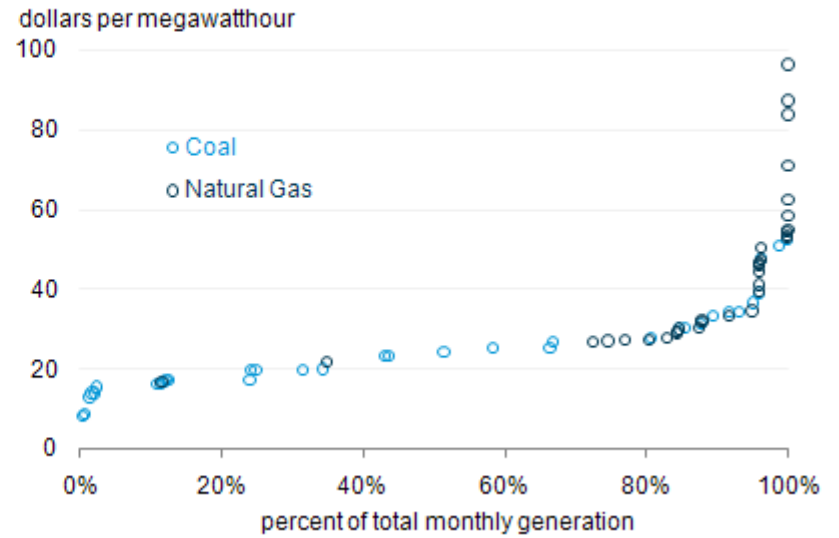
Electric supply curve (PA): Jun 2009



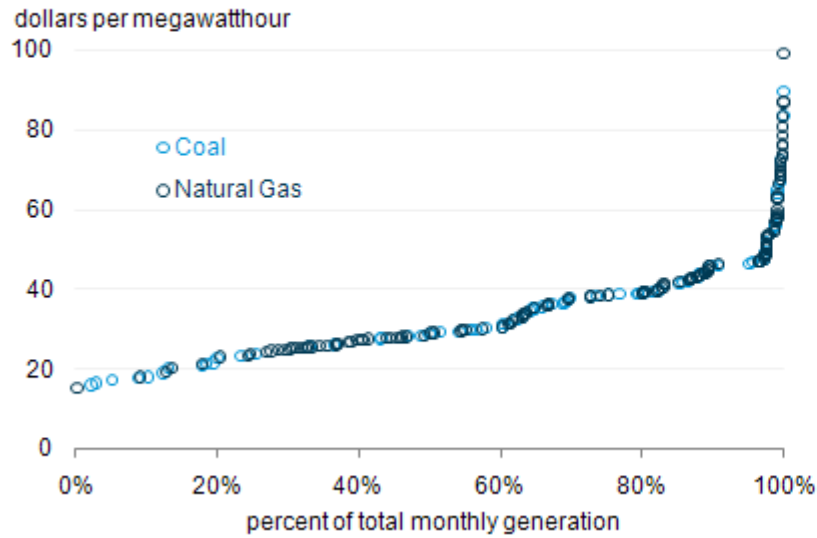
Electric supply curve (South): Jul 2009



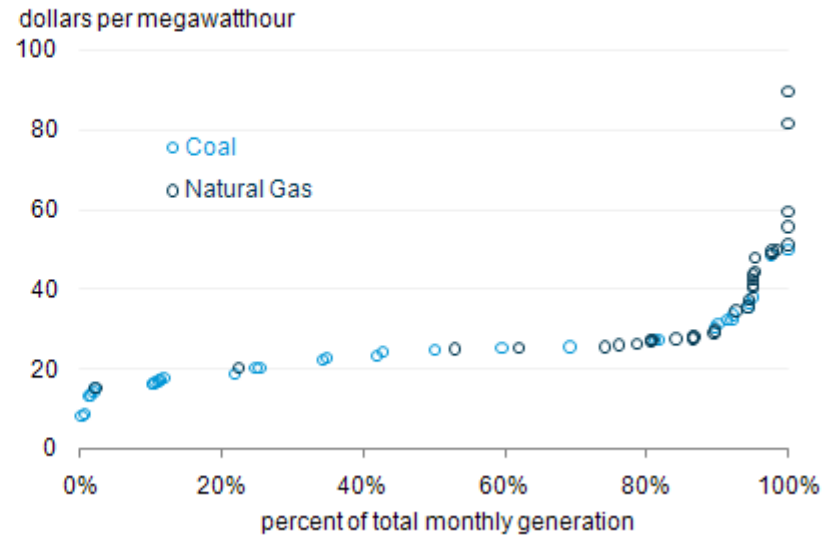
Electric supply curve (PA): Jul 2009



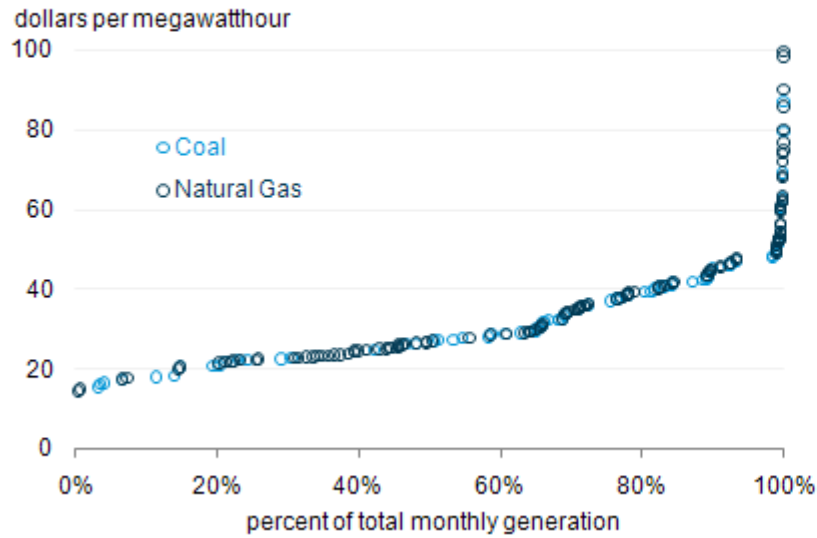
Electric supply curve (South): Aug 2009



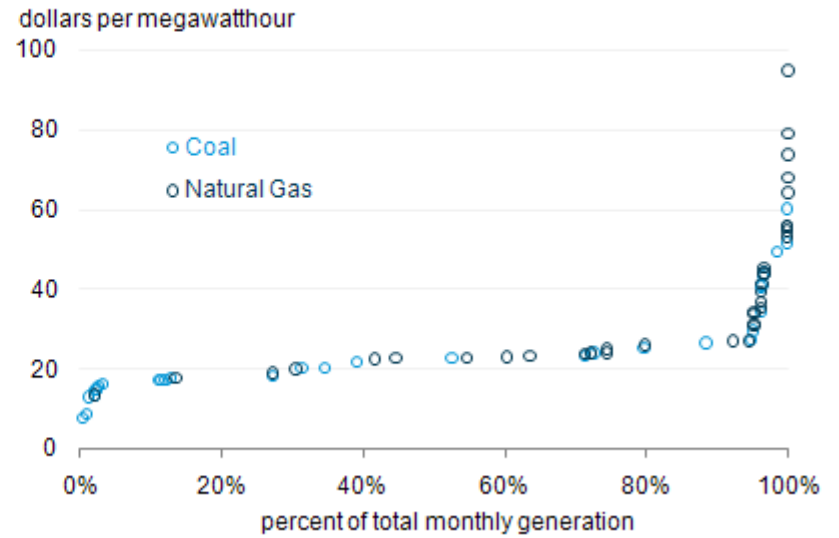
Electric supply curve (PA): Aug 2009



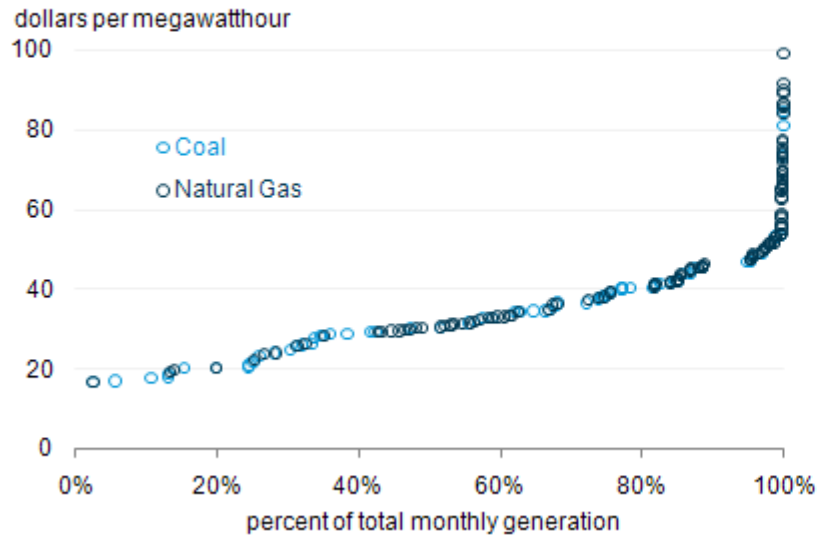
Electric supply curve (South): Sep 2009



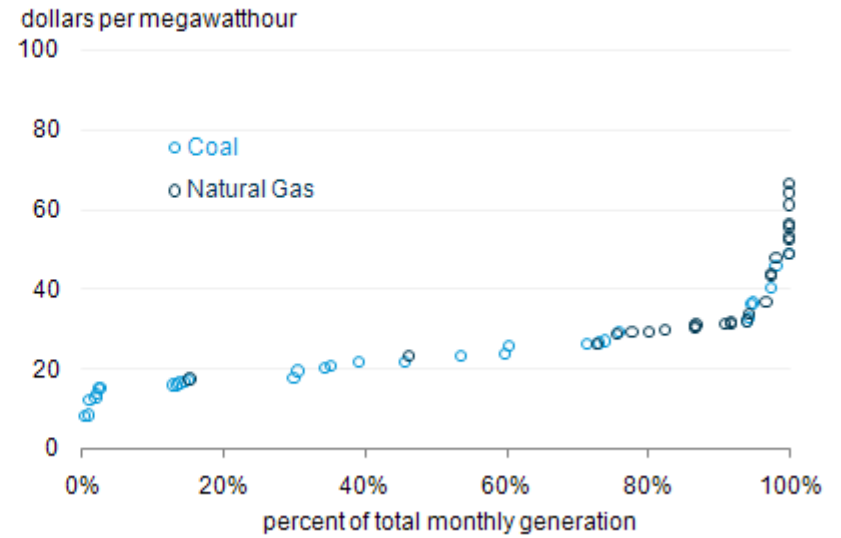
Electric supply curve (PA): Sep 2009



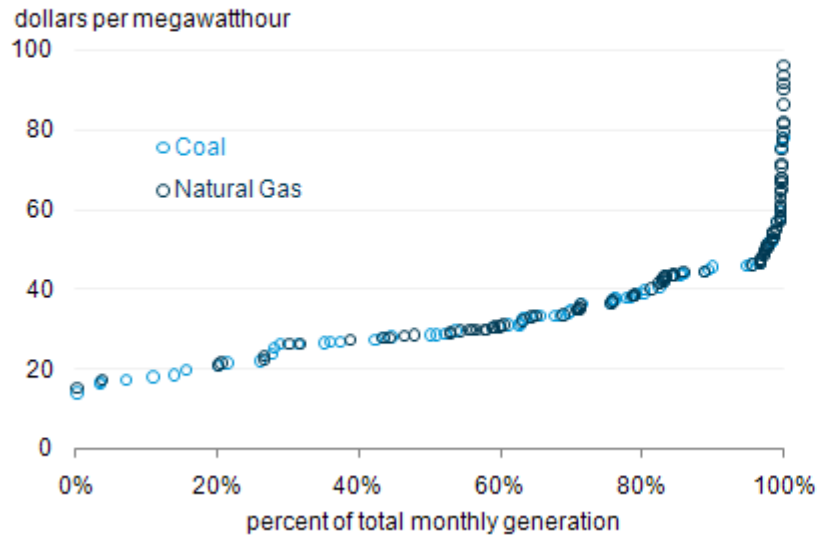
Electric supply curve (South): Oct 2009



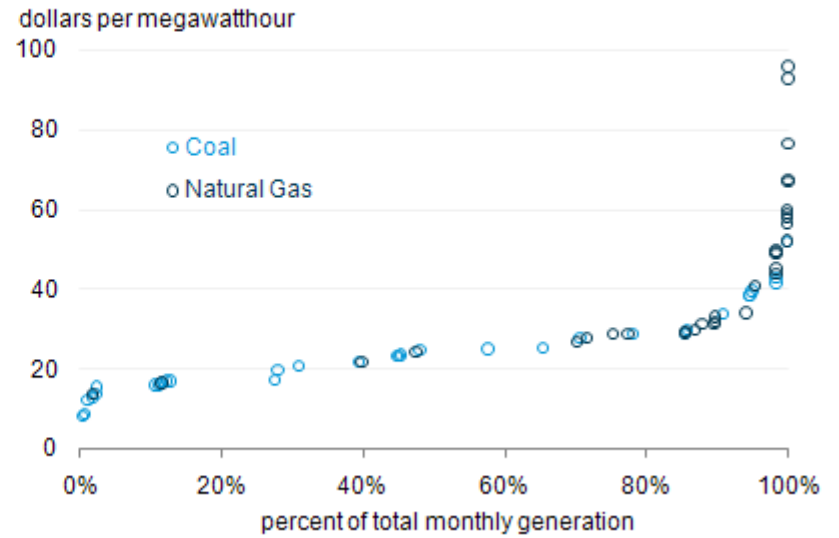
Electric supply curve (PA): Oct 2009



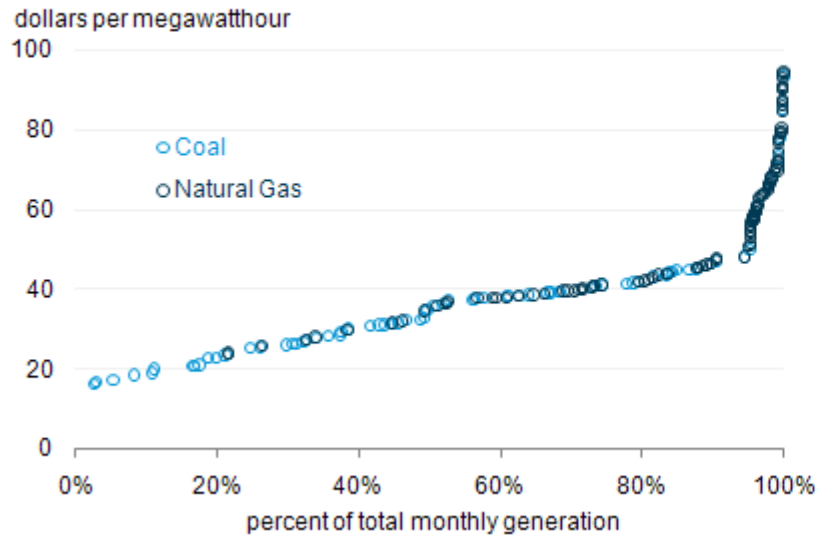
Electric supply curve (South): Nov 2009



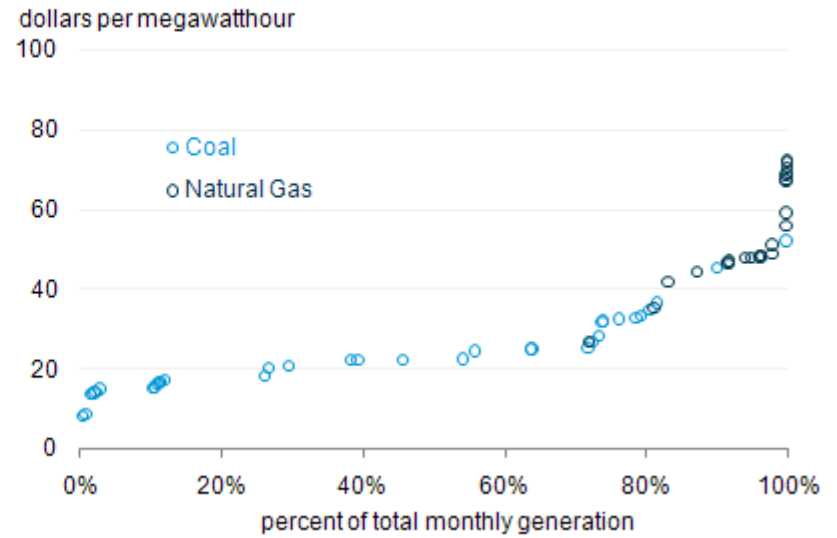
Electric supply curve (PA): Nov 2009



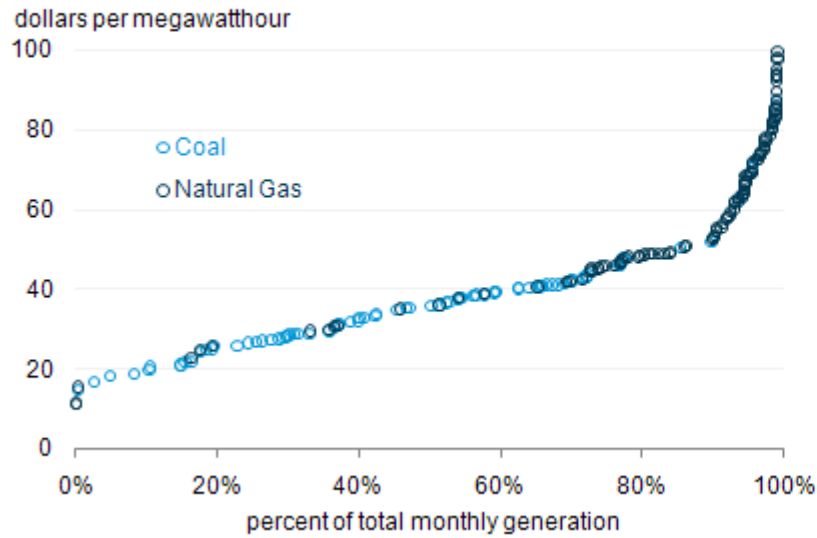
Electric supply curve (South): Dec 2009



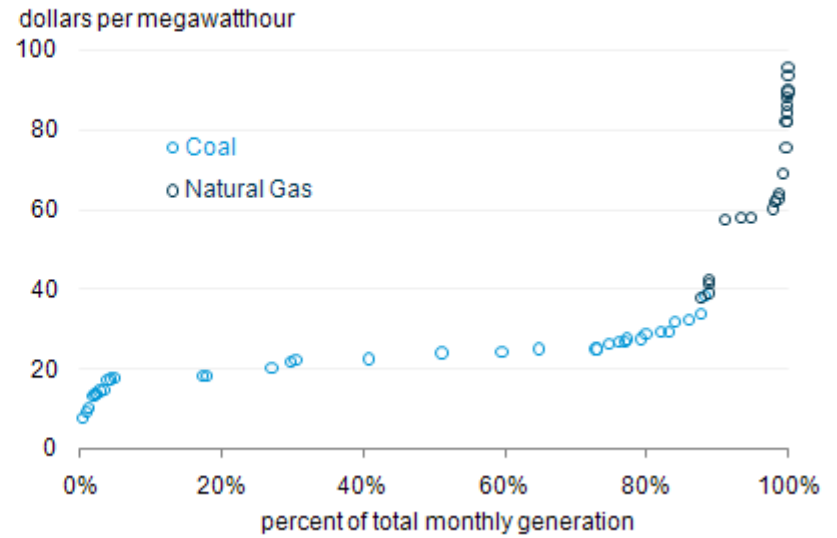
Electric supply curve (PA): Dec 2009



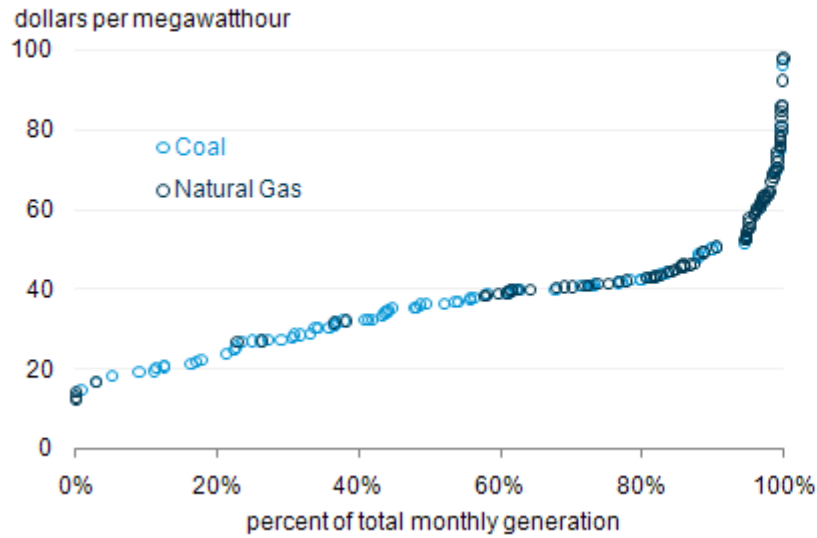
Electric supply curve (South): Jan 2010



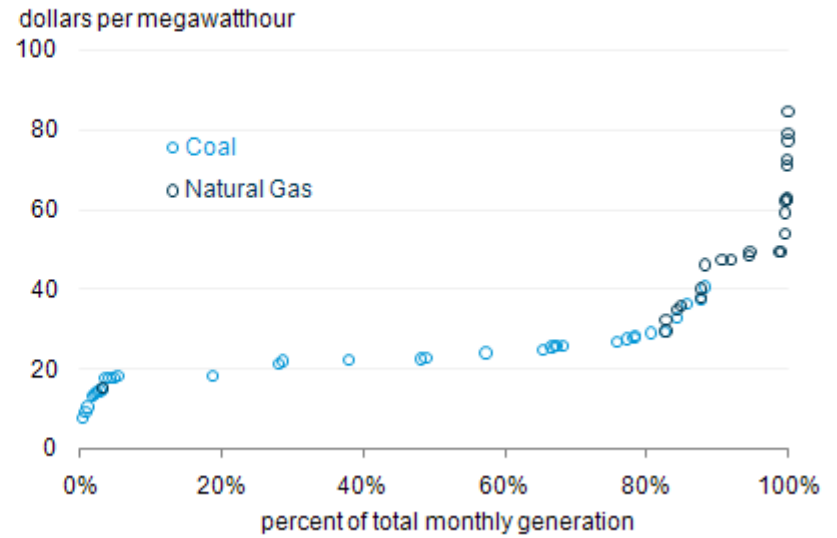
Electric supply curve (PA): Jan 2010



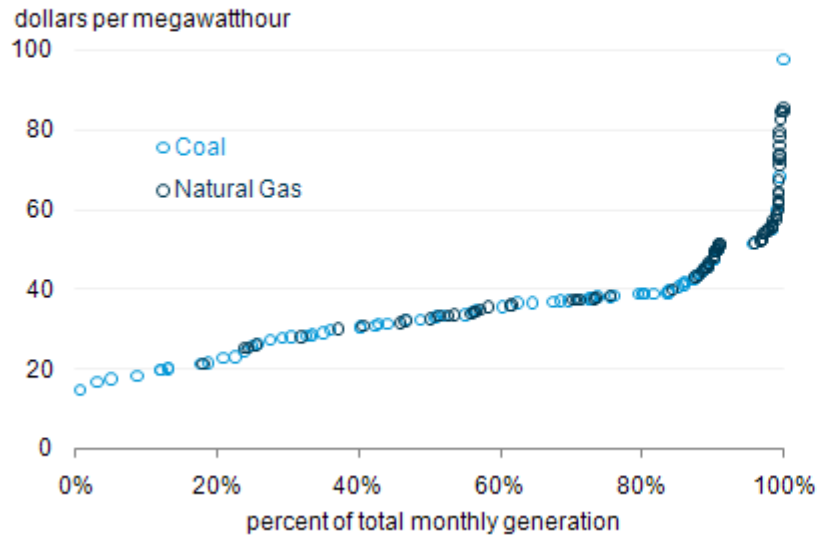
Electric supply curve (South): Feb 2010



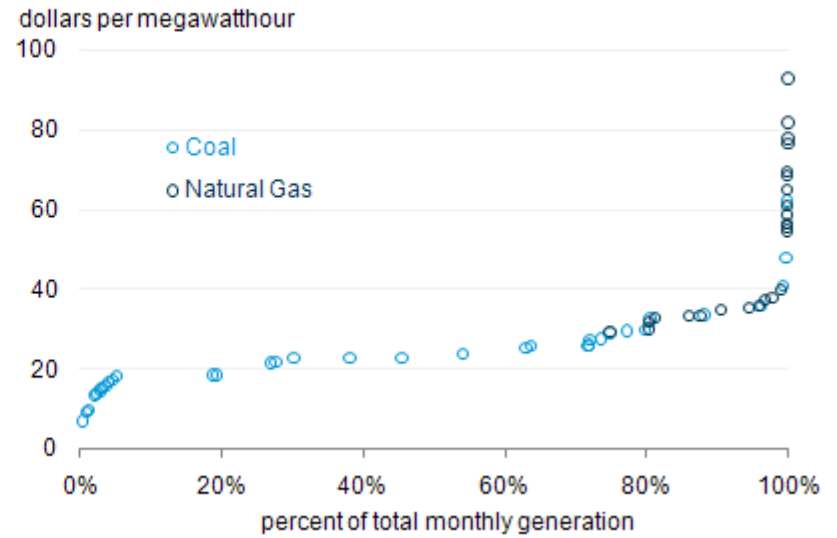
Electric supply curve (PA): Feb 2010



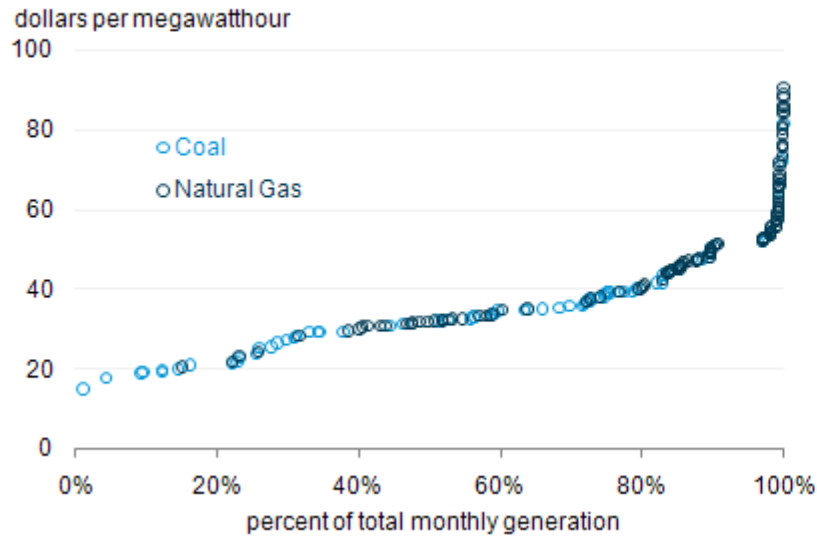
Electric supply curve (South): Mar 2010



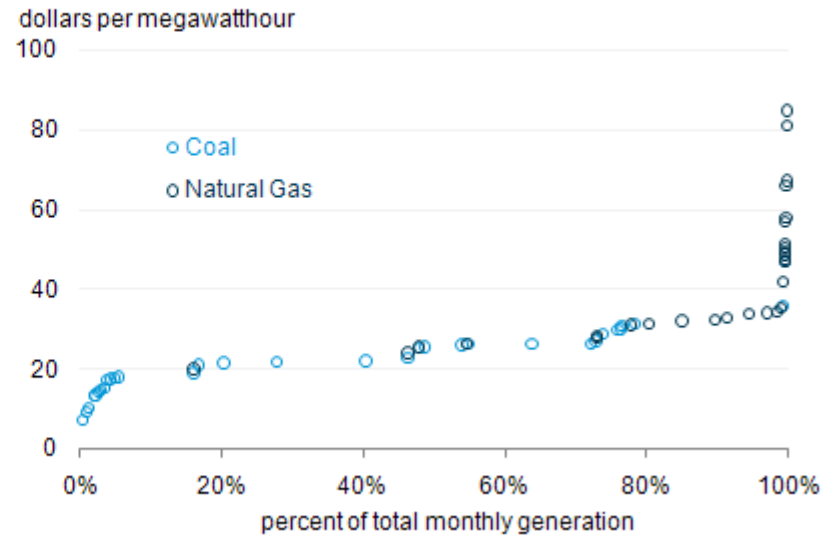
Electric supply curve (PA): Mar 2010



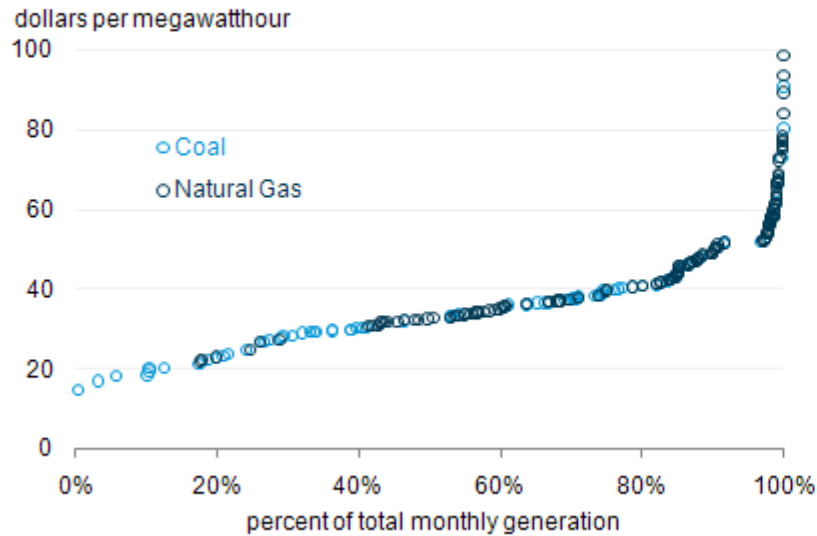
Electric supply curve (South): Apr 2010



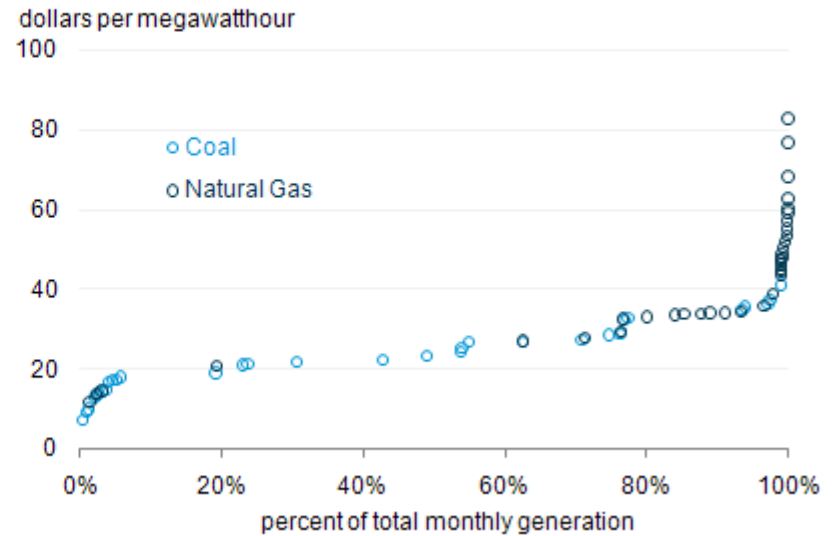
Electric supply curve (PA): Apr 2010



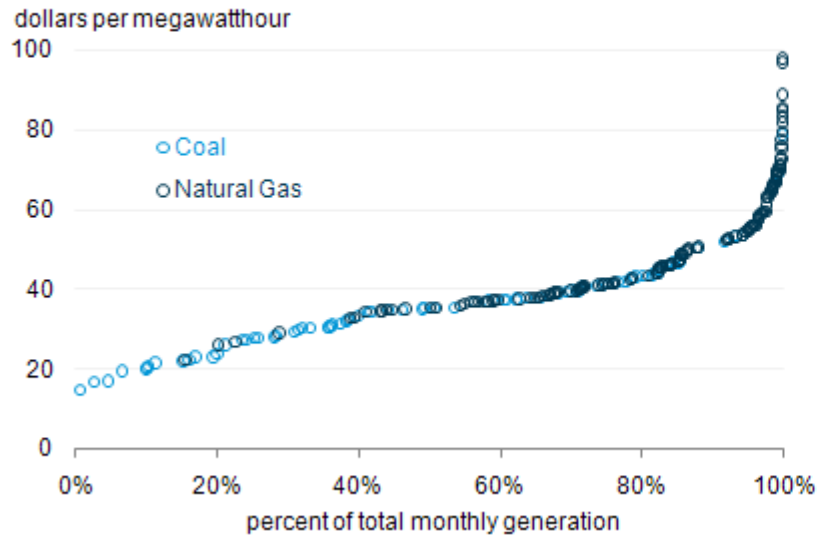
Electric supply curve (South): May 2010



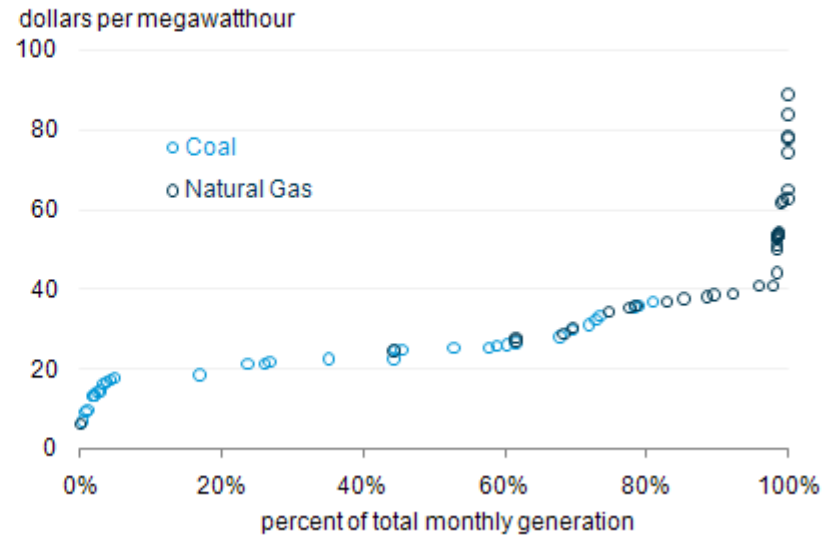
Electric supply curve (PA): May 2010



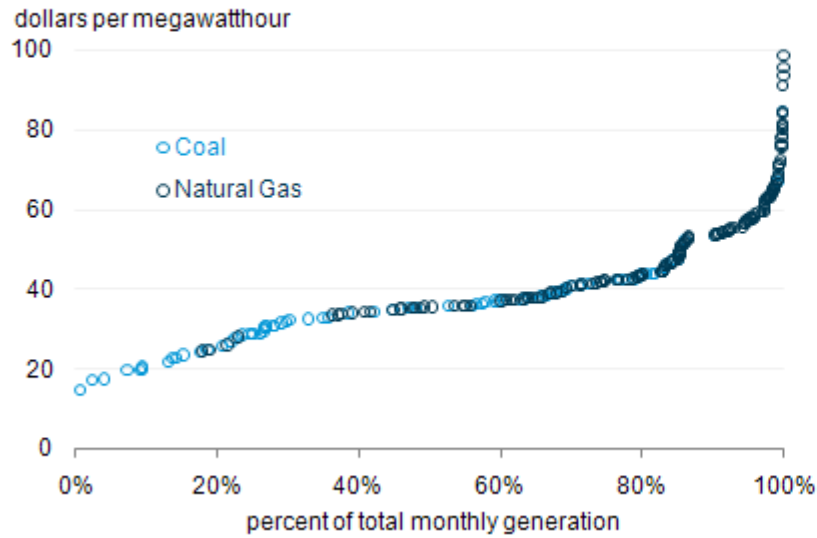
Electric supply curve (South): Jun 2010



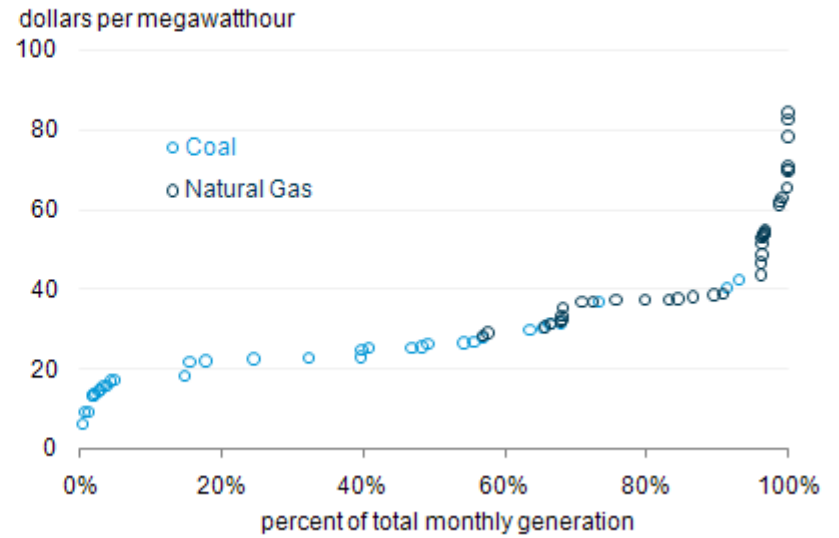
Electric supply curve (PA): Jun 2010



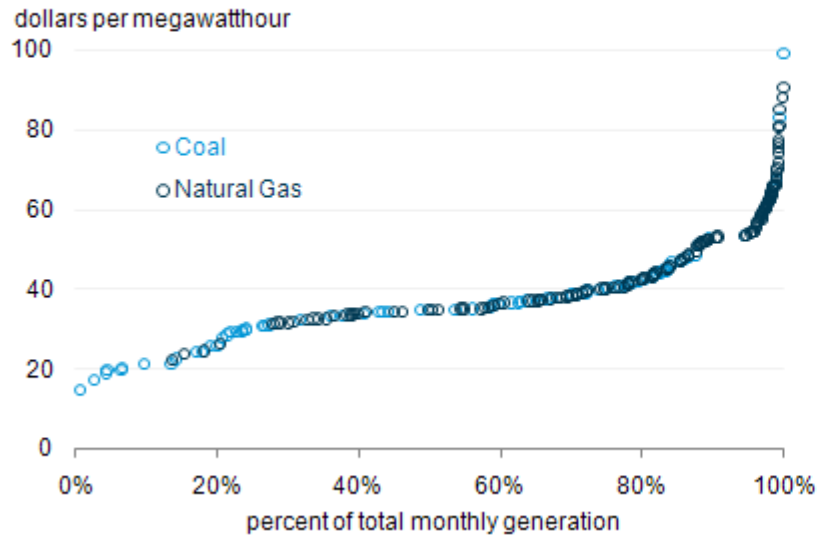
Electric supply curve (South): Jul 2010



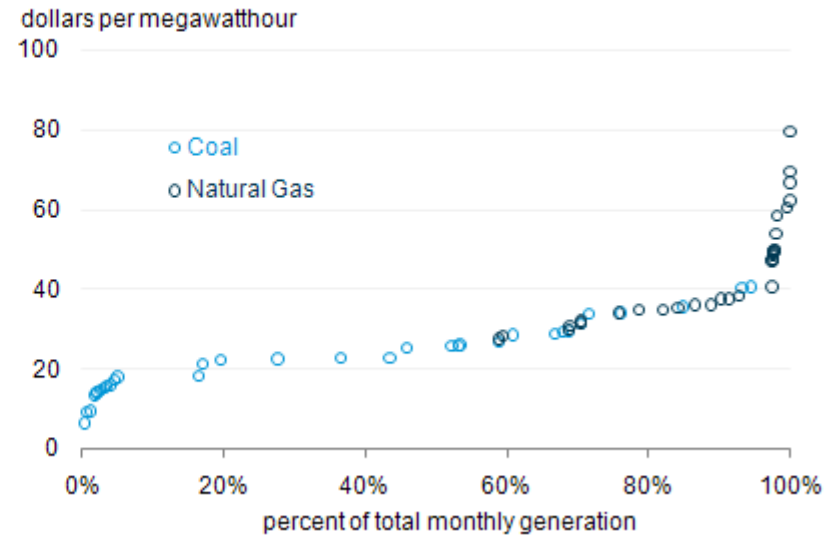
Electric supply curve (PA): Jul 2010



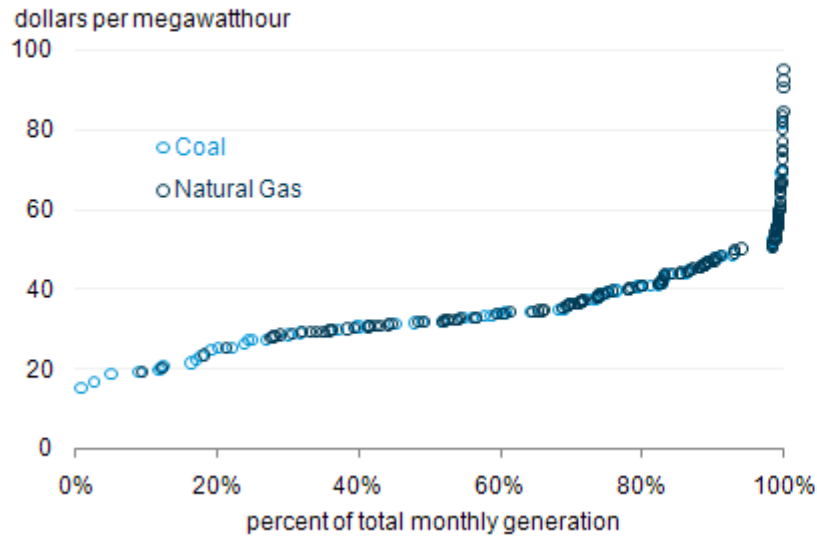
Electric supply curve (South): Aug 2010



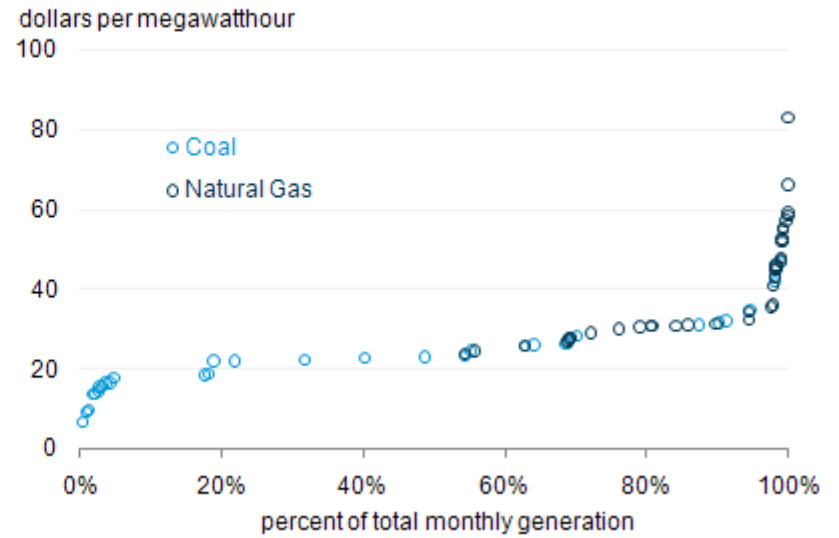
Electric supply curve (PA): Aug 2010



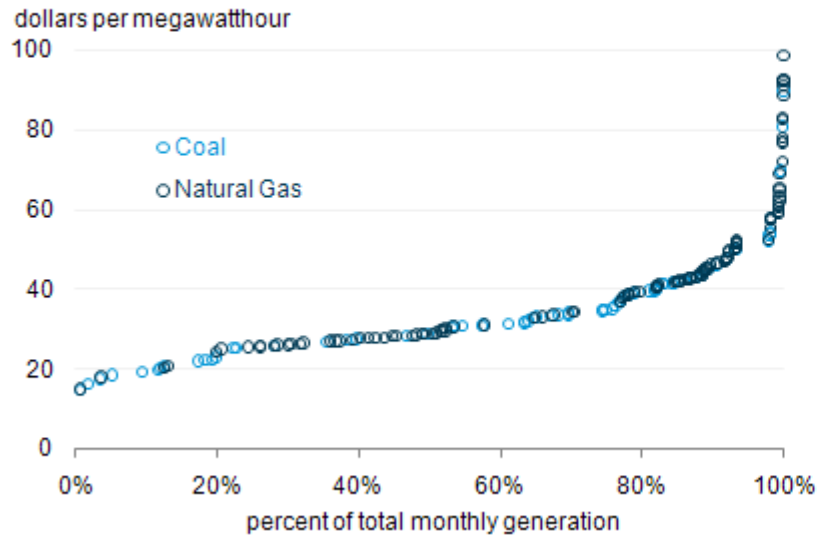
Electric supply curve (South): Sep 2010



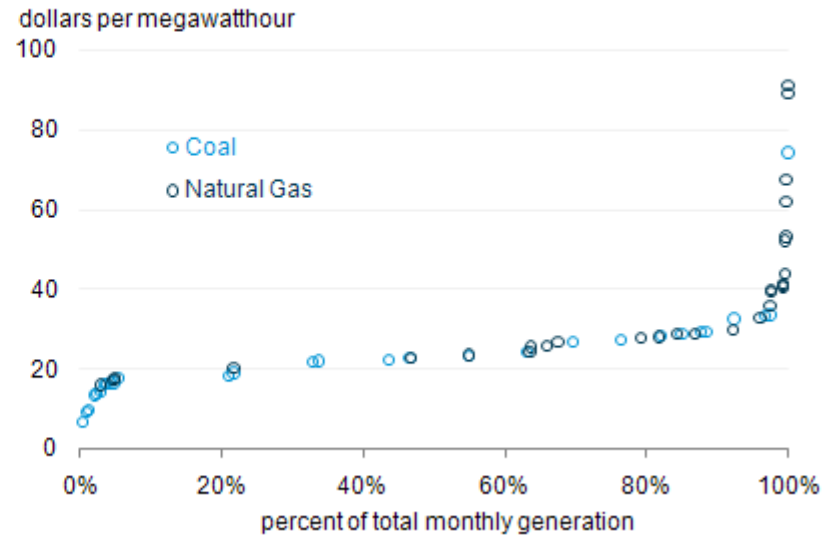
Electric supply curve (PA): Sep 2010



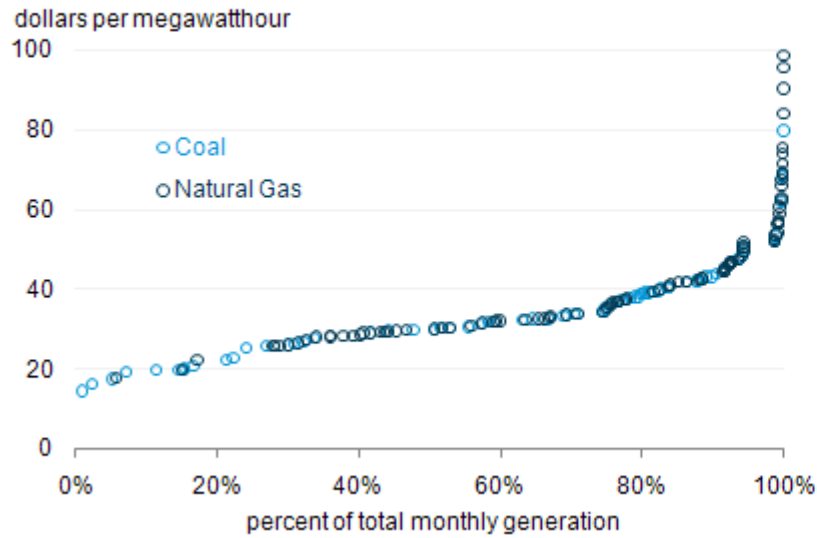
Electric supply curve (South): Oct 2010



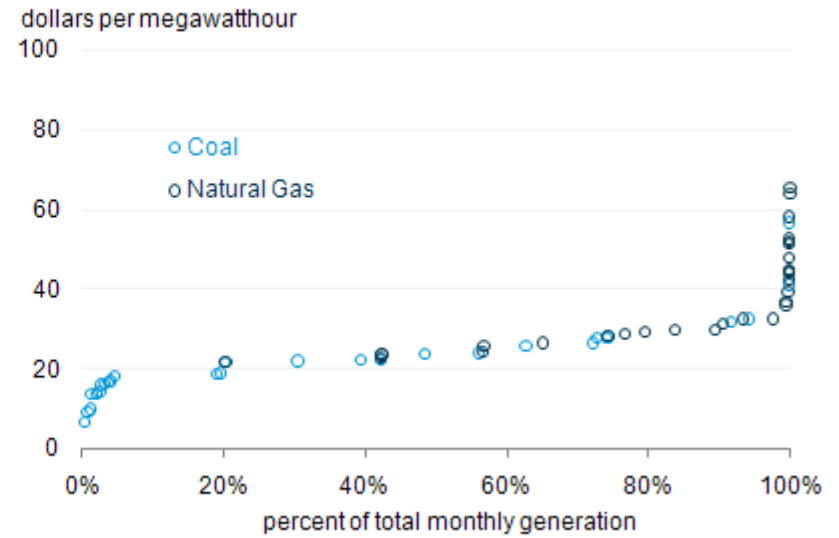
Electric supply curve (PA): Oct 2010



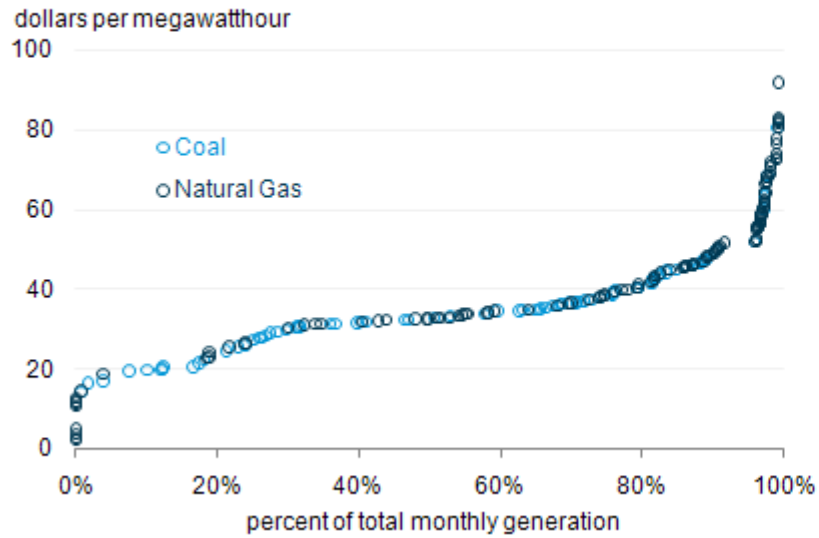
Electric supply curve (South): Nov 2010



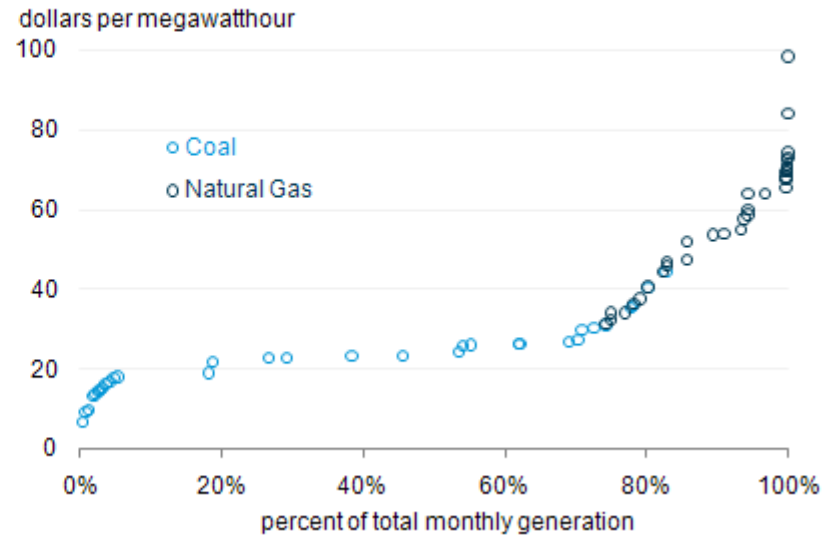
Electric supply curve (PA): Nov 2010



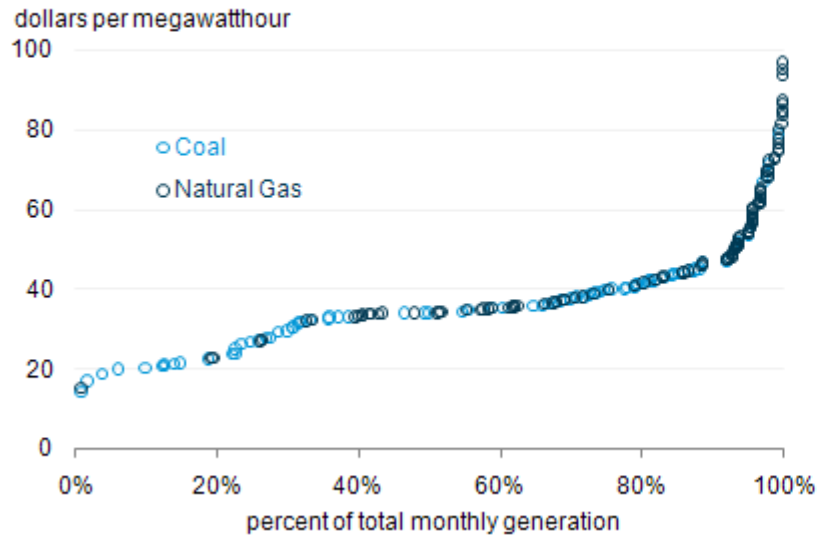
Electric supply curve (South): Dec 2010



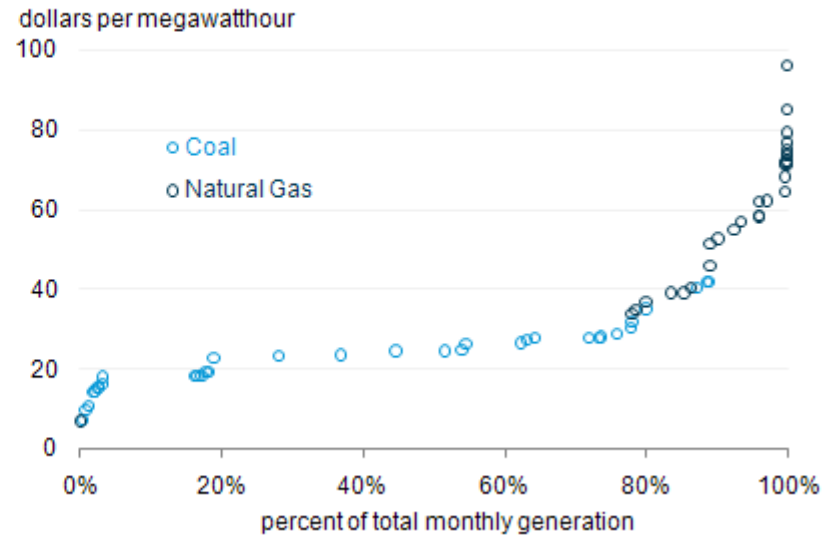
Electric supply curve (PA): Dec 2010

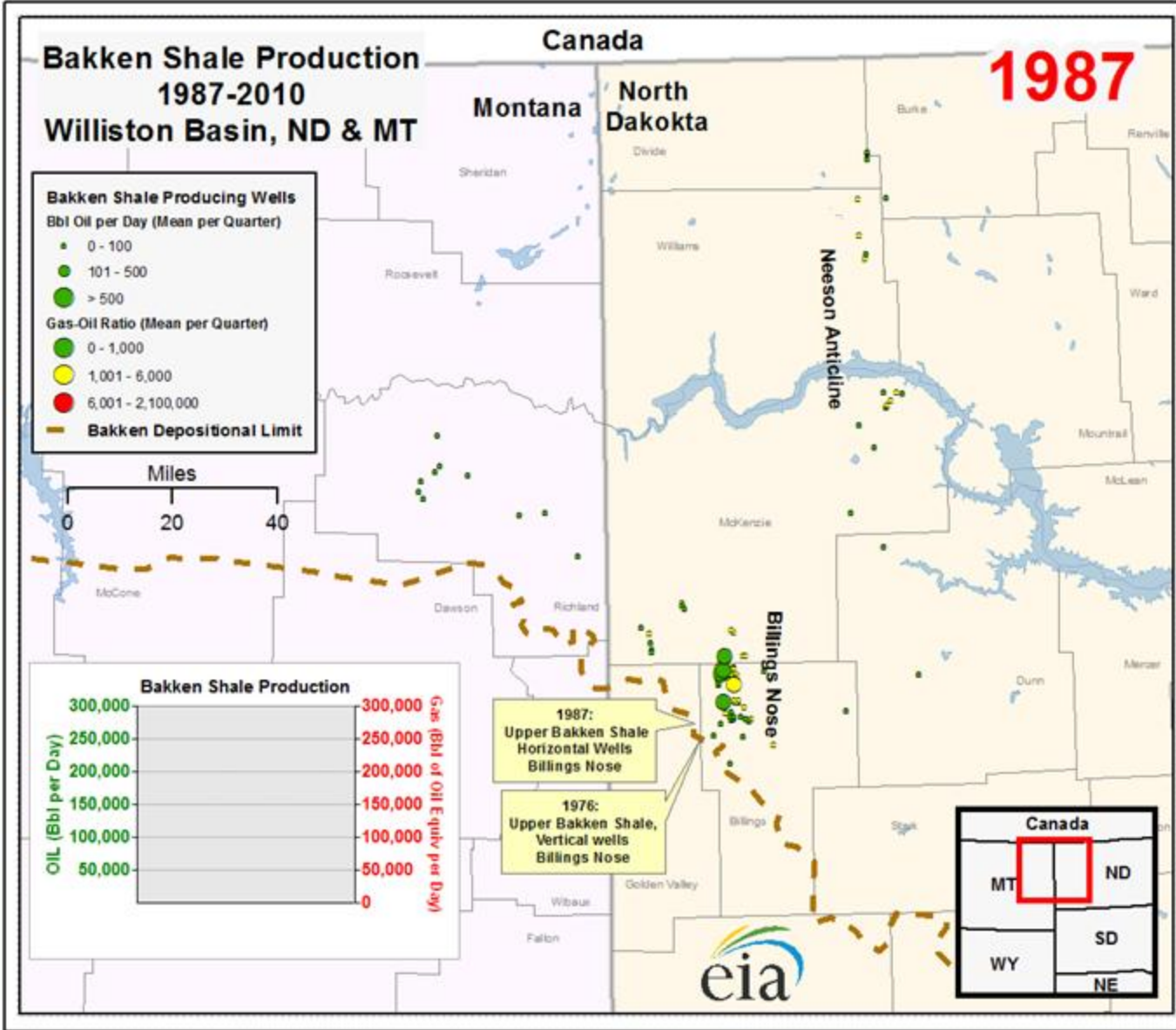


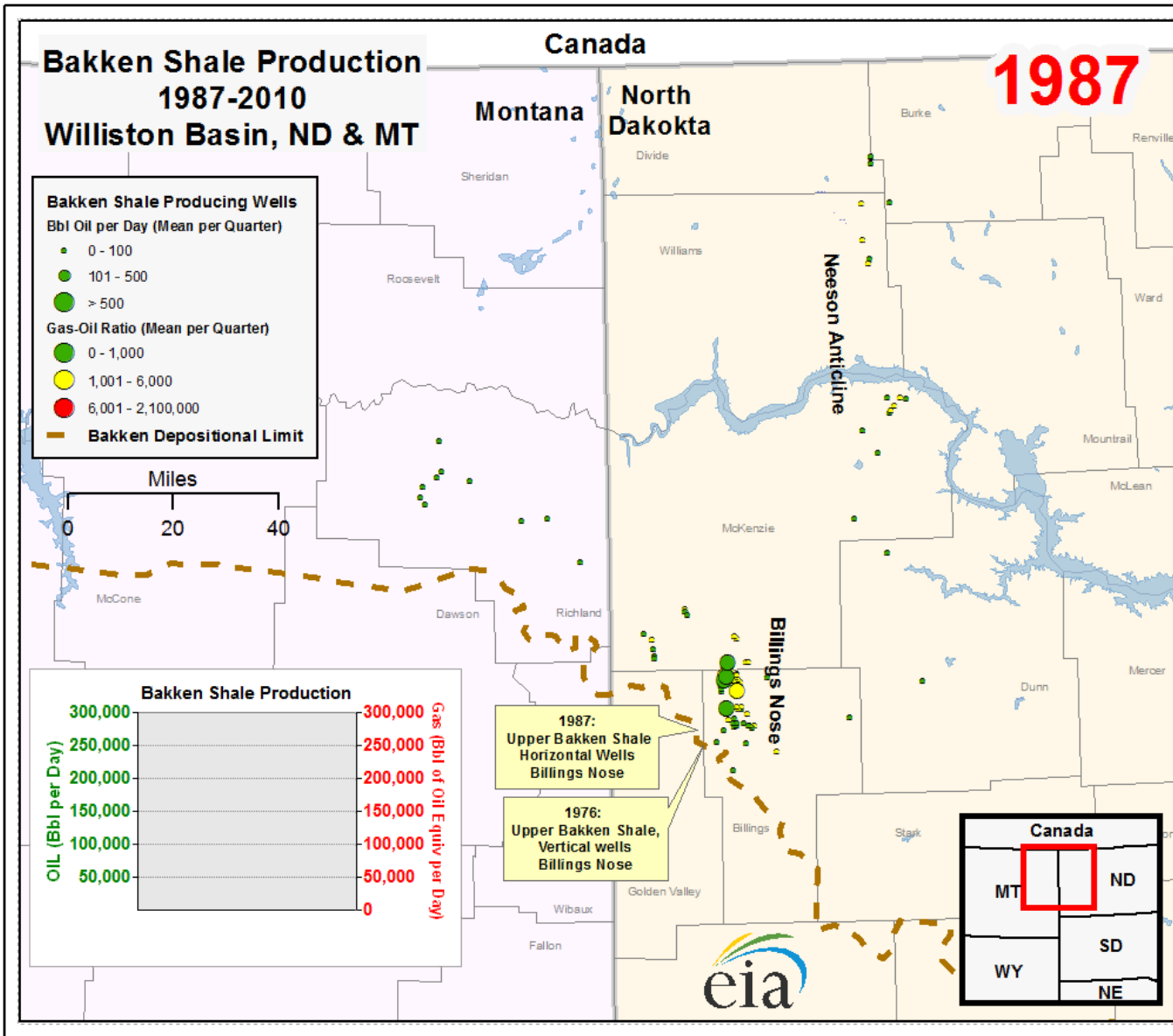
Electric supply curve (South): Jan 2011



Electric supply curve (PA): Jan 2011







Bakken Shale Production 1987-2010 Williston Basin, ND & MT

2010

Bakken Shale Producing Wells
Bbl Oil per Day (Mean per Quarter)

- 0 - 100
- 101 - 500
- > 500

Gas-Oil Ratio (Mean per Quarter)

- 0 - 1,000 (Oil Bbl >>> Gas BOE)
- 1,001 - 6,000 (Oil Bbl > Gas BOE)
- > 6,000 (Gas BOE > Oil Bbl)

Bakken Depositional Limit

