

Transmission of material in this release is embargoed until  
8:30 a.m. (EDT) Thursday, July 12, 2012

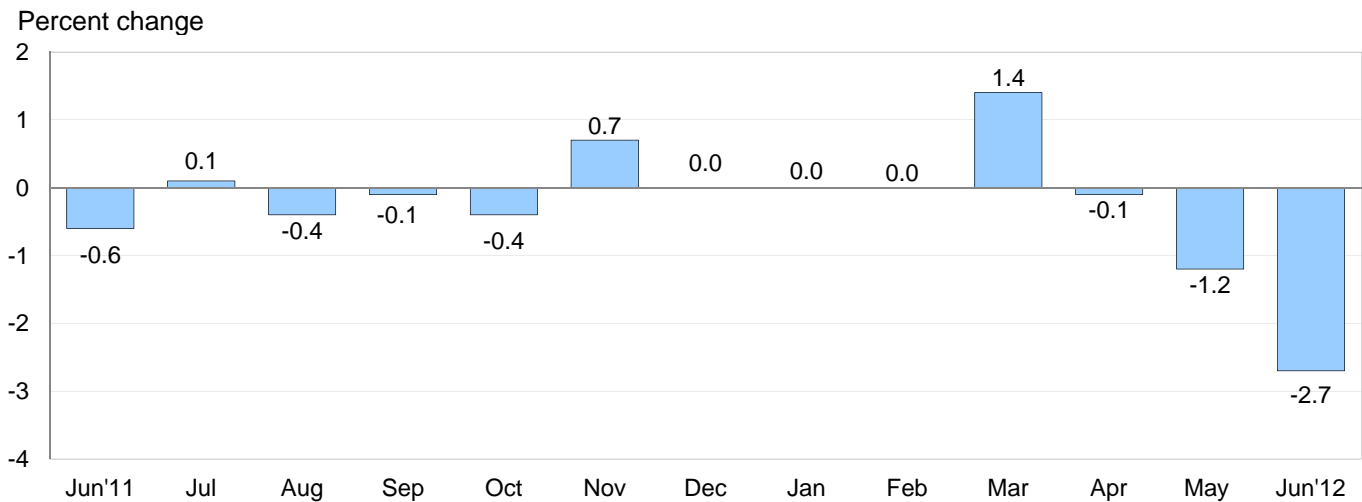
USDL-12-1381

Technical information: (202) 691-7101 • MXPinfo@bls.gov • www.bls.gov/mxp  
Media contact: (202) 691-5902 • PressOffice@bls.gov

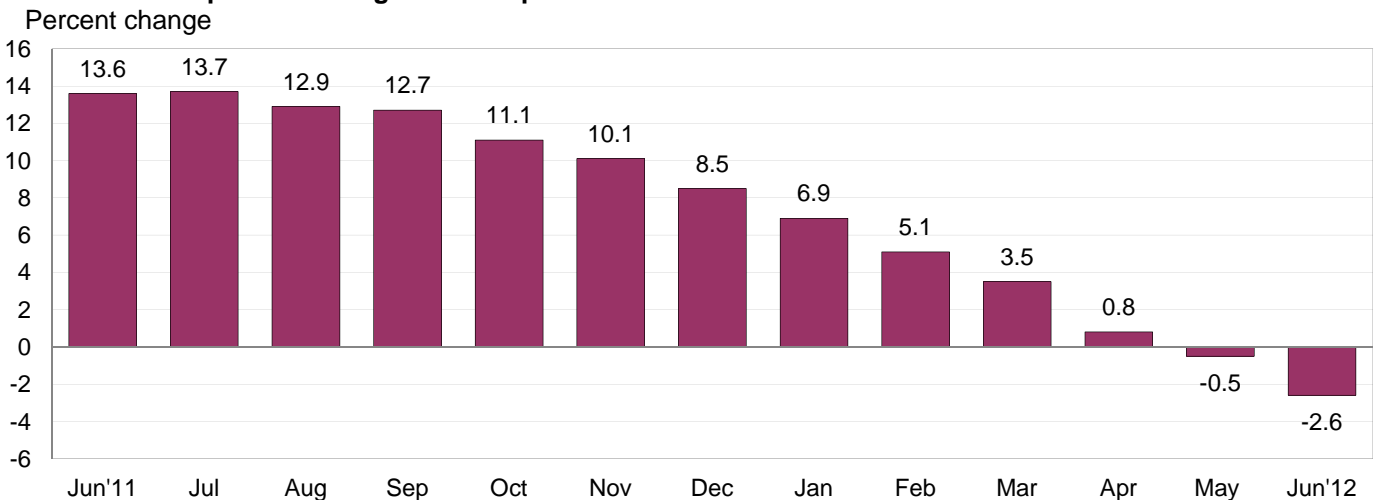
### U.S. IMPORT AND EXPORT PRICE INDEXES – JUNE 2012

U.S. import prices fell 2.7 percent in June, the U.S. Bureau of Labor Statistics reported today, following a 1.2 percent decrease in May. Lower prices for both fuel and nonfuel imports contributed to the overall decline. U.S. export prices fell 1.7 percent in June after a 0.4 percent drop the previous month.

**Chart 1. One-month percent change in the Import Price Index: June 2011– June 2012**



**Chart 2. 12-month percent change in the Import Price Index: June 2011– June 2012**



**All Imports:** Import prices decreased 2.7 percent in June after declining 1.2 percent and 0.1 percent the previous two months. The June drop was the largest monthly decrease since the index fell 4.6 percent in December 2008. The price index for U.S. imports decreased 2.6 percent over the past 12 months, the largest year-over-year decline since the October 2008-09 period. In contrast, import prices rose 13.6 percent for the year ended June 2011.

**Fuel Imports:** Fuel prices declined 10.1 percent in June after recording a 4.6 percent decrease in May and a 0.8 percent drop in April. The June decline in import fuel prices was the largest one-month drop in the index since a 22.2 percent decrease in December 2008. In June, a 10.5 percent decline in petroleum prices more than offset a 7.4 percent increase in natural gas prices, the first advance for the index since a 3.6 percent rise in November. Fuel prices fell 12.0 percent for the year ended in June, as a 10.7 percent drop in petroleum prices and a 44.7 percent decrease in natural gas prices both contributed to the overall decline.

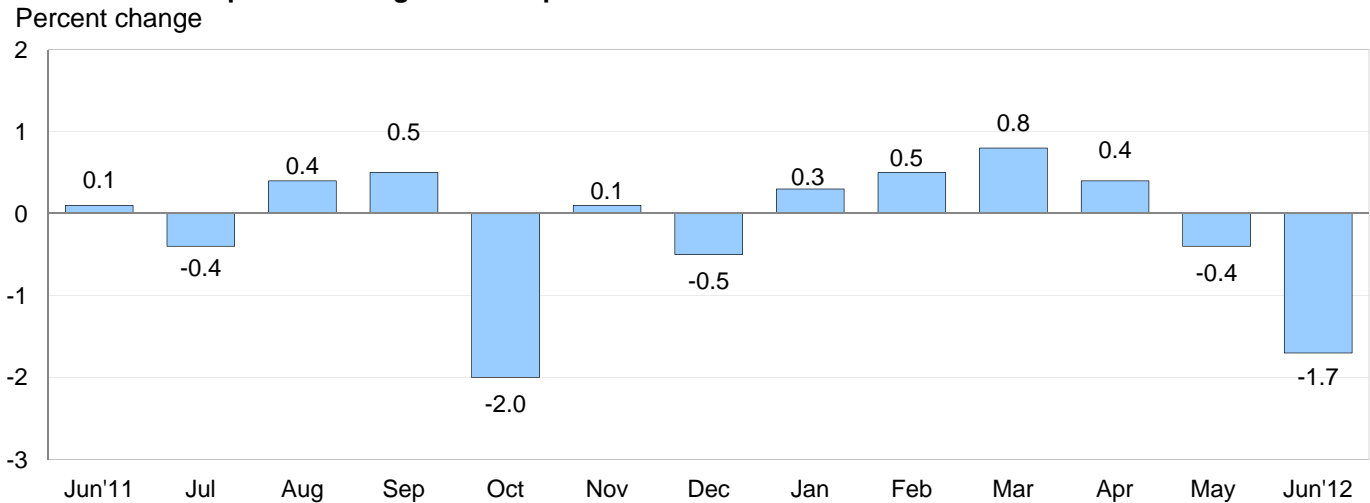
**All Imports Excluding Fuel:** The price index for nonfuel imports also fell in June, decreasing 0.3 percent following a 0.1 percent drop the previous month. Each of the major end use categories recorded declines in June. Despite the declines in each of the past two months, nonfuel prices rose 0.6 percent over the past year. However, the June 2011-12 increase was the smallest 12-month gain for the index since a 0.3 percent advance between December 2008 and December 2009.

**Table A. Percent changes**

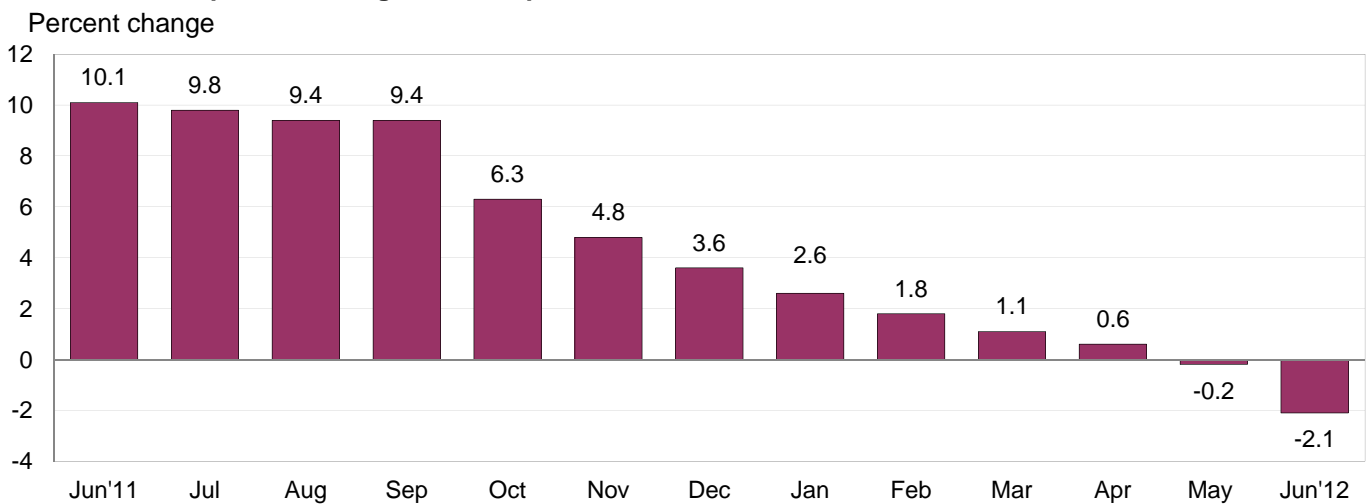
Month	IMPORTS			EXPORTS		
	All imports	Fuel imports	Nonfuel imports	All exports	Agricultural exports	Non-agricultural exports
<b>2011</b>						
June.....	-0.6	-2.3	0.0	0.1	0.8	0.2
July.....	0.1	0.1	0.2	-0.4	-4.0	0.1
August.....	-0.4	-2.1	0.2	0.4	1.6	0.3
September.....	-0.1	-1.0	0.2	0.5	1.9	0.3
October.....	-0.4	-0.6	-0.2	-2.0	-6.5	-1.4
November.....	0.7	3.4	-0.2	0.1	1.7	-0.2
December.....	0.0	-0.4	0.1	-0.5	-2.3	-0.2
<b>2012</b>						
January.....	0.0	-0.2	0.2	0.3	1.1	0.2
February.....	0.0	-0.1	0.0	0.5	-0.4	0.6
March.....	1.4	4.4	0.4 <sup>r</sup>	0.8	2.4	0.5
April.....	-0.1 <sup>r</sup>	-0.8 <sup>r</sup>	0.2	0.4	2.0	0.2
May.....	-1.2 <sup>r</sup>	-4.6 <sup>r</sup>	-0.1	-0.4	0.7	-0.6 <sup>r</sup>
June.....	-2.7	-10.1	-0.3	-1.7	-4.0	-1.4
June 2010 to 2011.....	13.6	46.1	5.0	10.1	31.4	8.0
June 2011 to 2012.....	-2.6	-12.0	0.6	-2.1	-6.1	-1.6

r Revised

**Chart 3. One-month percent change in the Export Price Index: June 2011– June 2012**



**Chart 4. 12-month percent change in the Export Price Index: June 2011– June 2012**



**All Exports:** The price index for U.S. exports declined 1.7 percent in June, the largest monthly decline since the index fell 2.0 percent in October 2011. Falling prices for both agricultural and nonagricultural exports each contributed to the decline. U.S. export prices also fell overall for the June 2011-12 period, decreasing 2.1 percent. The decline over the past year was the largest 12-month drop since the index declined 3.6 percent between October 2008 and October 2009.

**Agricultural Exports:** Agricultural prices fell 4.0 percent in June, the first monthly decrease since a 0.4 percent decline in February, and the largest monthly drop since a 6.5 percent decrease in October 2011. The June decrease was driven by a 9.0 percent decline in soybean prices, an 8.3 percent fall in corn prices, and a 14.3 percent drop in cotton prices. Overall agricultural prices also decreased for the year ended in June, declining 6.1 percent.

**All Exports Excluding Agriculture:** Prices for nonagricultural exports fell for the second consecutive month in June, decreasing 1.4 percent after falling 0.6 percent in May. Declining prices for nonagricultural industrial supplies and materials prices, capital goods prices, and automotive vehicles prices more than offset rising consumer goods prices. Nonagricultural prices fell 1.6 percent over the past year, the first year-over-year drop since a 2.9 percent decrease from October 2008 to October 2009.

## SELECTED JUNE HIGHLIGHTS

### Import Prices

**Nonfuel Import Highlights:** The overall decrease in nonfuel prices was led by a 1.3 percent decline in the price index for nonfuel industrial supplies and materials. A 3.5 percent drop in unfinished metals prices and a 0.8 percent decline in prices for chemicals were the main contributors to the drop in nonfuel industrial supplies and materials prices. The price indexes for each of the major finished goods categories also recorded declines in June; prices for capital goods fell 0.2 percent, while consumer goods prices and prices for automotive vehicles each edged down 0.1 percent. Prices for foods, feeds, and beverages decreased 1.0 percent in June, led by lower prices for fruit and food oils.

**Imports by Locality of Origin:** Prices from Canada, Mexico, and the European Union all decreased in June, led by lower fuel prices. The price index for imports from Canada fell 2.9 percent in June following declines of 0.5 percent and 1.4 percent the two previous months. Import prices from Mexico decreased 2.2 percent in June after a 0.9 percent drop in May and a 0.3 percent decline in April, and prices for imports from the European Union declined for the second consecutive month in June, falling 0.7 percent after edging down 0.1 percent in May. In contrast, the price index for imports from Japan ticked up 0.1 percent in June, while import prices from China recorded no change.

**Transportation Services:** Import air passenger fares rose 10.3 percent in June, the largest monthly advance for the index since a 13.0 percent increase in June 2009. While the current rise was led by a seasonal increase in European fares, up 20.0 percent in June, the index for overall air passenger fares advanced 8.6 percent over the past 12 months. Import air freight prices also increased in June, rising 0.3 percent for the second consecutive month. Despite the recent increases, prices for import air freight fell 3.4 percent for the year ended in June.

### Export Prices

**Nonagricultural Export Highlights:** A 3.8 percent drop in nonagricultural industrial supplies and materials prices led the decline in overall nonagricultural prices in June. The decrease was driven by an 8.6 percent decline in export fuel prices, although lower prices for nonferrous metals and chemicals were also contributing factors. Finished goods prices were mixed in June. The price indexes for capital goods and automotive vehicles each edged down 0.1 percent, while consumer goods prices rose 0.2 percent.

**Transportation Services:** Export air passenger fares advanced 3.1 percent in June following a 2.9 percent increase the previous month. The June rise was driven by a 14.7 percent seasonal advance in European fares. Export air passenger fares rose over the past year, advancing 6.0 percent. Prices for export air freight fell 1.8 percent in June, the largest monthly decrease since a 3.0 percent decline in May 2009. The price index for export air freight increased 0.4 percent over the past 12 months.

#### Announcement

Beginning with the July Import-Export Price Indexes data release scheduled for August 10, 2012, existing import price indexes by locality of origin will be expanded to include price indexes for select industry areas. These new indexes will be available at <http://www.bls.gov/web/ximpim/ippsloor.htm>. In total, 249 indexes will be added across the various localities, including 31 new price indexes for imports from China, and 20 new price indexes for imports from the European Union.

**Import and Export Price Index data for July 2012 are scheduled for release on Friday, August 10, 2012 at 8:30 a.m. (EDT).**

**Table 1. U.S. import price indexes and percent changes for selected categories of goods: June 2011 to June 2012**

[2000=100, unless otherwise noted]

Description	End Use	Relative importance May 2012 <sup>1</sup>	Index		Percent change				
			May 2012	June 2012	Annual June 2011 to June 2012	Monthly			
						Feb. 2012 to Mar. 2012	Mar. 2012 to Apr. 2012	Apr. 2012 to May 2012	May 2012 to June 2012
<b>All commodities</b> .....		100.000	142.4	138.5	-2.6	1.4	-0.1	-1.2	-2.7
<b>All imports excluding food and fuels (Dec. 2010=100)</b> .....		70.909	104.0	103.7	0.8	0.3	0.3	-0.1	-0.3
<b>All imports excluding petroleum</b> .....		76.838	116.6	116.2	-0.2	0.3	0.1	-0.2	-0.3
<b>All imports excluding fuels (Dec. 2001=100)</b> ..		75.996	121.2	120.8	0.6	0.4	0.2	-0.1	-0.3
<b>Foods, feeds, &amp; beverages</b> .....	0	5.087	173.2	171.4	-1.9	1.8	0.1	-0.8	-1.0
Agricultural foods, feeds & beverages, excluding distilled beverages.....	00	3.950	195.3	193.0	-2.0	2.2	0.1	-0.6	-1.2
Nonagricultural foods (fish, distilled beverages).....	01	1.137	123.0	122.6	-1.5	0.3	0.2	-1.5	-0.3
<b>Industrial supplies &amp; materials</b> .....	1	37.418	263.0	244.8	-8.0	3.4	-0.3	-3.0	-6.9
Industrial supplies & materials excluding petroleum.....		14.256	167.3	165.6	-4.0	0.9	-0.1	-0.1	-1.0
Industrial supplies & materials excluding fuels (Dec. 2001=100).....		13.414	194.1	191.5	-0.7	1.5	0.6	0.1	-1.3
Industrial supplies & materials, durable.....		7.832	180.2	176.9	-4.2	1.8	-1.1	-0.6	-1.8
Industrial supplies & materials nondurable excluding petroleum.....		5.582	152.2	152.1	-3.9	-0.2	1.2	0.6	-0.1
Fuels & lubricants.....	10	24.005	351.1	315.8	-12.0	4.4	-0.8	-4.6	-10.1
Petroleum & petroleum products.....	100	23.163	396.8	355.1	-10.7	4.9	-0.5	-4.7	-10.5
Crude.....	10000	17.702	412.5	371.9	-9.1	4.0	-1.2	-3.6	-9.8
Fuels, n.e.s.-coals & gas.....	101	0.551	75.6	79.6	-40.3	-9.7	-11.9	-2.7	5.3
Gas-natural.....	10110	0.444	61.0	65.5	-44.7	-12.9	-14.3	-3.3	7.4
Paper & paper base stocks.....	11	0.589	114.4	114.1	-4.4	1.4	-0.8	1.1	-0.3
Materials associated with nondurable supplies & materials.....	12	5.082	185.1	183.8	6.2	1.1	3.2	1.0	-0.7
Selected building materials.....	13	1.012	137.2	138.8	7.3	1.8	0.5	1.6	1.2
Unfinished metals related to durable goods.....	14	3.703	273.5	263.8	-11.2	3.0	-2.2	-1.5	-3.5
Finished metals related to durable goods. ...	15	1.536	163.5	161.9	0.5	-0.2	0.1	-0.4	-1.0
Nonmetals related to durable goods.....	16	1.492	115.6	115.0	0.6	0.5	0.3	-0.2	-0.5
<b>Capital goods</b> .....	2	22.071	93.4	93.2	0.5	0.0	-0.1	0.0	-0.2
Electric generating equipment.....	20	2.858	119.1	118.6	1.3	0.2	0.3	-0.1	-0.4
Nonelectrical machinery.....	21	17.577	86.4	86.3	-0.1	0.0	-0.2	0.0	-0.1
Transportation equipment excluding motor vehicles (Dec. 2001=100).....	22	1.637	133.8	133.7	6.0	0.9	0.4	0.1	-0.1
<b>Automotive vehicles, parts &amp; engines</b> .....	3	11.467	114.3	114.2	0.8	0.3	0.6	-0.1	-0.1
<b>Consumer goods, excluding automotives</b> ..	4	23.957	107.7	107.6	1.7	0.0	0.2	-0.1	-0.1
Nondurables, manufactured.....	40	11.511	114.9	114.9	3.0	0.1	0.4	-0.1	0.0
Durables, manufactured.....	41	11.150	99.8	99.7	0.0	0.1	-0.3	-0.1	-0.1
Nonmanufactured consumer goods.....	42	1.297	119.7	119.5	6.9	-1.5	1.0	0.4	-0.2

<sup>1</sup> Relative importance figures are based on 2010 trade values.

NOTES: Data may be revised in each of the three months after original publication.

Dash = Not available

**Table 2. U.S. export price indexes and percent changes for selected categories of goods: June 2011 to June 2012**

[2000=100, unless otherwise noted]

Description	End Use	Relative importance May 2012 <sup>1</sup>	Index		Percent change				
			May 2012	June 2012	Annual	Monthly			
					June 2011 to June 2012	Feb. 2012 to Mar. 2012	Mar. 2012 to Apr. 2012	Apr. 2012 to May 2012	May 2012 to June 2012
<b>All commodities.....</b>		100.000	134.0	131.7	-2.1	0.8	0.4	-0.4	-1.7
<b>Agricultural commodities.....</b>		11.114	212.5	204.0	-6.1	2.4	2.0	0.7	-4.0
<b>All exports excluding food and fuels (Dec. 2010=100).....</b>		81.086	103.3	102.6	-0.8	0.4	0.0	-0.2	-0.7
<b>Nonagricultural commodities.....</b>		88.888	128.4	126.6	-1.6	0.5	0.2	-0.6	-1.4
<b>Foods, feeds, &amp; beverages.....</b>	0	10.213	212.7	205.2	-2.6	2.7	2.3	0.9	-3.5
Agricultural foods, feeds & beverages, excluding distilled beverages.....	00	9.503	215.7	207.4	-3.4	3.0	2.3	1.1	-3.8
Nonagricultural foods (fish, distilled beverages).....	01	0.710	188.6	190.5	9.1	-0.3	2.8	-1.5	1.0
<b>Industrial supplies &amp; materials.....</b>	1	34.463	185.7	178.5	-6.9	1.1	0.5	-1.8	-3.9
Industrial supplies & materials, durable.....		12.313	188.3	183.3	-3.7	1.1	-0.8	-0.6	-2.7
Industrial supplies & materials, nondurable.....		22.150	185.0	176.7	-8.7	1.1	1.2	-2.5	-4.5
Agricultural industrial supplies & materials..	10	1.611	198.9	189.3	-19.4	-0.3	0.3	-1.5	-4.8
<b>Nonagricultural industrial supplies &amp; materials.....</b>		32.852	185.4	178.3	-6.2	1.2	0.5	-1.8	-3.8
Fuels & lubricants.....	11	8.703	271.6	248.3	-12.6	2.5	1.7	-4.7	-8.6
Nonagricultural supplies & materials excluding fuels & building materials.....	12	23.215	175.0	171.2	-4.1	0.7	0.0	-0.7	-2.2
Selected building materials.....	13	0.934	117.3	117.5	1.1	0.1	0.4	-0.3	0.2
<b>Capital goods.....</b>	2	34.439	106.0	105.9	1.2	0.2	0.0	0.1	-0.1
Electrical generating equipment.....	20	3.531	114.0	114.0	0.4	0.4	0.0	0.8	0.0
Nonelectrical machinery.....	21	24.961	95.3	95.2	1.1	0.1	0.0	0.0	-0.1
Transportation equipment excluding motor vehicles (Dec. 2001=100).....	22	5.946	149.2	149.2	2.7	0.3	0.3	0.1	0.0
<b>Automotive vehicles, parts &amp; engines.....</b>	3	8.196	113.1	113.0	2.4	0.2	0.4	0.1	-0.1
<b>Consumer goods, excluding automotives..</b>	4	12.691	116.7	116.9	0.5	0.1	-0.5	0.4	0.2
Nondurables, manufactured.....	40	5.889	114.9	114.8	0.6	0.2	-0.1	0.1	-0.1
Durables, manufactured.....	41	5.374	115.1	114.9	2.0	0.3	-0.3	1.1	-0.2

<sup>1</sup> Relative importance figures are based on 2010 trade values.

NOTES: Data may be revised in each of the three months after original publication.

Dash = Not available

**Table 3. U.S. import price indexes and percent changes for selected categories of goods: June 2011 to June 2012**

[December 2005=100, unless otherwise noted]

Description	NAICS	Relative importance May 2012 <sup>1</sup>	Index		Percent change				
			May 2012	June 2012	Annual	Monthly			
					June 2011 to June 2012	Feb. 2012 to Mar. 2012	Mar. 2012 to Apr. 2012	Apr. 2012 to May 2012	May 2012 to June 2012
<b>Nonmanufactured articles.....</b>		20.754	173.0	157.0	-11.2	3.6	-1.4	-3.5	-9.2
<b>Agriculture, forestry, fishing and hunting...</b>	11	1.856	175.5	172.2	-4.1	3.5	2.1	-1.0	-1.9
Crop production.....	111	1.323	183.0	178.4	-4.0	4.2	2.9	-0.8	-2.5
<b>Mining.....</b>	21	18.898	172.4	155.2	-11.9	3.7	-1.7	-3.7	-10.0
Mining (except oil and gas) (Dec. 2006=100).....	212	0.328	145.4	143.9	-7.1	1.2	-0.3	-0.2	-1.0
<b>Manufactured articles.....</b>		78.781	118.3	117.2	-0.2	0.8	0.3	-0.6	-0.9
<b>Manufactured goods, part 1.....</b>	31	10.843	125.9	125.4	2.9	0.2	0.6	-0.2	-0.4
Food manufacturing.....	311	3.081	163.6	161.9	3.5	1.2	1.9	-0.6	-1.0
Beverage and tobacco product manufacturing.....	312	0.837	111.9	111.8	1.0	-0.3	-0.1	0.4	-0.1
Textile mills (Dec. 2011=100).....	313	0.399	101.7	101.5	-	0.2	0.2	0.0	-0.2
Textile product mills.....	314	0.870	117.1	117.1	0.6	-1.1	0.9	-0.3	0.0
Apparel manufacturing.....	315	4.043	111.9	111.8	2.6	0.0	0.0	-0.2	-0.1
Leather and allied product manufacturing. .	316	1.613	119.5	119.5	5.6	-0.1	0.1	0.2	0.0
<b>Manufactured goods, part 2.....</b>	32	17.882	139.9	135.6	-1.9	2.4	1.3	-2.0	-3.1
Wood product manufacturing.....	321	0.608	114.7	116.5	8.7	2.9	0.9	1.4	1.6
Paper manufacturing.....	322	1.081	111.4	111.1	-1.8	1.0	-0.6	0.6	-0.3
Petroleum and coal products manufacturing.....	324	4.602	170.7	152.5	-13.2	7.2	2.2	-8.2	-10.7
Chemical manufacturing.....	325	8.792	136.7	135.7	2.0	0.7	1.3	0.4	-0.7
Plastics and rubber products manufacturing.....	326	1.881	127.9	127.7	3.5	0.2	0.3	0.2	-0.2
Nonmetallic mineral product manufacturing.....	327	0.829	130.2	130.2	2.0	0.2	0.1	0.5	0.0
<b>Manufactured goods, part 3.....</b>	33	50.056	110.1	109.7	-0.4	0.4	-0.2	-0.2	-0.4
Primary metal manufacturing.....	331	4.301	180.0	173.9	-9.2	2.8	-1.7	-1.5	-3.4
Fabricated metal product manufacturing. . .	332	2.524	129.7	129.5	2.9	-0.1	0.0	0.0	-0.2
Machinery manufacturing.....	333	5.587	121.4	121.2	2.4	0.2	0.2	0.2	-0.2
Computer and electronic product manufacturing.....	334	15.303	82.3	82.2	-1.8	-0.2	-0.5	-0.1	-0.1
Electrical equipment, appliance, and component manufacturing.....	335	3.802	118.4	118.3	2.5	0.2	0.3	0.0	-0.1
Transportation equipment manufacturing....	336	12.128	111.4	111.3	1.2	0.5	0.5	-0.1	-0.1
Furniture and related product manufacturing.....	337	1.294	113.2	114.0	2.8	0.4	0.0	0.0	0.7
Miscellaneous manufacturing.....	339	5.117	122.4	122.5	1.2	0.0	0.2	-0.1	0.1

<sup>1</sup> Relative importance figures are based on 2010 trade values.

NOTES: Data may be revised in each of the three months after original publication.

Dash = Not available

**Table 4. U.S. export price indexes and percent changes for selected categories of goods: June 2011 to June 2012**

[December 2005=100, unless otherwise noted]

Description	NAICS	Relative importance May 2012 <sup>1</sup>	Index		Percent change				
			May 2012	June 2012	Annual	Monthly			
					June 2011 to June 2012	Feb. 2012 to Mar. 2012	Mar. 2012 to Apr. 2012	Apr. 2012 to May 2012	May 2012 to June 2012
<b>Nonmanufactured articles.....</b>		8.366	167.9	158.1	-14.1	0.7	1.5	0.3	-5.8
<b>Agriculture, forestry, fishing and hunting...</b>	11	6.422	202.3	190.1	-10.6	2.8	3.0	0.7	-6.0
Crop production.....	111	6.003	210.5	196.8	-11.4	3.0	2.8	1.2	-6.5
<b>Mining.....</b>	21	1.944	98.9	93.9	-23.6	-5.1	-2.9	-1.1	-5.1
Mining (except oil and gas).....	212	1.379	122.4	119.4	-14.7	-5.5	-3.3	-2.2	-2.5
<b>Manufactured articles.....</b>		88.570	121.6	120.2	-0.3	0.7	0.3	-0.5	-1.2
<b>Manufactured goods, part 1.....</b>	31	7.145	147.6	146.7	1.7	1.3	0.8	0.6	-0.6
Food manufacturing.....	311	4.992	169.2	167.8	4.3	1.5	1.2	0.8	-0.8
Beverage and tobacco product manufacturing.....	312	0.565	119.8	119.2	0.3	2.6	0.3	0.6	-0.5
Apparel manufacturing.....	315	0.416	119.9	121.7	6.8	0.0	0.1	0.0	1.5
<b>Manufactured goods, part 2.....</b>	32	26.644	135.8	131.9	-2.7	1.3	1.2	-1.8	-2.9
Wood product manufacturing.....	321	0.403	114.9	114.4	-0.6	-0.5	1.1	-0.3	-0.4
Paper manufacturing.....	322	1.810	118.3	118.9	-5.3	-0.2	0.9	-1.2	0.5
Petroleum and coal products manufacturing.....	324	6.412	173.9	158.4	-9.7	4.2	3.1	-5.3	-8.9
Chemical manufacturing.....	325	15.092	133.0	131.1	-1.0	0.7	0.7	-0.8	-1.4
Plastics and rubber products manufacturing.....	326	2.180	118.0	117.8	5.6	0.2	0.6	0.2	-0.2
Nonmetallic mineral product manufacturing.....	327	0.747	111.4	112.2	1.6	0.4	-0.3	0.0	0.7
<b>Manufactured goods, part 3.....</b>	33	54.781	113.6	113.2	0.7	0.4	-0.2	0.1	-0.4
Primary metal manufacturing.....	331	4.839	174.4	169.2	-5.6	2.4	-1.8	-1.1	-3.0
Fabricated metal product manufacturing. . .	332	2.608	129.7	129.7	1.8	0.7	0.4	0.0	0.0
Machinery manufacturing.....	333	11.026	120.5	120.6	2.8	0.3	0.2	0.1	0.1
Computer and electronic product manufacturing.....	334	14.370	90.3	90.0	0.4	0.0	-0.3	0.1	-0.3
Electrical equipment, appliance, and component manufacturing.....	335	3.197	112.6	112.6	-0.3	0.4	0.2	0.4	0.0
Transportation equipment manufacturing....	336	13.336	116.9	116.9	2.4	0.3	0.3	0.1	0.0
Furniture and related product manufacturing (Dec. 2011=100).....	337	0.295	102.6	103.0	-	0.2	0.9	0.0	0.4
Miscellaneous manufacturing.....	339	5.111	122.1	122.5	-0.6	-0.1	-0.9	0.9	0.3

1 Relative importance figures are based on 2010 trade values.

NOTES: Data may be revised in each of the three months after original publication.

Dash = Not available



**Table 5. U.S. import price indexes and percent changes for selected categories of goods: June 2011 to June 2012**

[2000=100, unless otherwise noted]

Description	Harmonized system	Relative importance May 2012 <sup>1</sup>	Index		Percent change				
			May 2012	June 2012	Annual	Monthly			
					June 2011 to June 2012	Feb. 2012 to Mar. 2012	Mar. 2012 to Apr. 2012	Apr. 2012 to May 2012	May 2012 to June 2012
<b>Live animals; animal products.....</b>	I	1.146	165.3	165.5	-1.3	1.3	-1.2	-1.8	0.1
Meat and edible meat offal.....	02	0.263	212.1	215.2	2.6	2.0	-4.6	0.0	1.5
Fish and crustaceans, molluscs and other aquatic invertebrates.....	03	0.596	119.2	117.8	-7.1	0.4	-0.4	-2.5	-1.2
<b>Vegetable products.....</b>	II	1.760	225.7	220.5	4.7	4.5	6.2	-1.1	-2.3
Edible vegetables, roots, and tubers.....	07	0.318	319.9	319.2	6.5	18.9	8.1	-0.1	-0.2
Edible fruit and nuts; peel of citrus fruit or melons.....	08	0.482	122.4	117.6	-5.6	7.2	0.1	-4.2	-3.9
Coffee, tea, mate and spices.....	09	0.414	271.5	266.7	-8.5	-6.2	1.0	-1.8	-1.8
<b>Animal or vegetable fats and oils (Dec. 2009=100).....</b>	III	0.265	136.7	125.7	-19.9	2.1	0.9	0.6	-8.0
<b>Prepared foodstuffs, beverages, and tobacco.....</b>	IV	2.358	157.6	157.0	0.1	-0.1	-0.3	0.1	-0.4
Cocoa and cocoa preparations (Dec. 2009=100).....	18	0.182	85.4	84.4	-14.7	1.3	-1.6	-1.4	-1.2
Preparations of cereals, flour, starch or milk; bakers' wares (Dec. 2007=100).....	19	0.224	126.2	125.8	-2.4	0.2	0.1	0.1	-0.3
Preparations of vegetables, fruit, nuts, or other parts of plants.....	20	0.346	172.7	168.7	5.2	-0.7	-0.7	-0.6	-2.3
Beverages, spirits, and vinegar.....	22	0.792	122.5	122.2	1.5	-0.5	-0.2	0.6	-0.2
<b>Mineral products.....</b>	V	23.711	353.1	319.1	-11.4	4.3	-0.8	-4.4	-9.6
Mineral fuels, oils and residuals, bituminous substances and mineral waxes.....	27	23.404	349.4	315.3	-11.5	4.4	-0.8	-4.5	-9.8
<b>Products of the chemical or allied industries.....</b>	VI	8.281	151.4	150.9	2.7	0.3	1.4	0.8	-0.3
Inorganic chemicals.....	28	0.913	370.4	384.1	0.8	-4.5	3.5	5.3	3.7
Organic chemicals.....	29	2.447	140.3	138.1	1.0	1.8	0.4	-0.3	-1.6
Pharmaceutical products.....	30	3.006	117.5	117.4	4.9	0.3	1.6	0.1	-0.1
Fertilizers (Dec. 2009=100).....	31	0.505	160.6	156.7	12.7	1.2	5.8	7.1	-2.4
Tanning extracts; dye, pigments, varnish, paints & putty (Dec. 2011=100).....	32	0.184	106.9	106.5	-	0.6	3.8	-0.2	-0.4
Essential oils and resinoids (Dec. 2001=100).....	33	0.409	124.4	124.3	-0.7	0.7	0.5	-0.7	-0.1
Miscellaneous chemical products.....	38	0.474	103.7	102.4	-5.0	0.4	-0.1	0.0	-1.3
<b>Plastics and articles thereof; rubber and articles thereof.....</b>	VII	3.094	153.6	153.1	0.9	0.3	0.5	-0.1	-0.3
Plastics and articles thereof.....	39	1.873	144.5	144.4	2.1	0.4	0.4	0.1	-0.1
Rubber and articles thereof.....	40	1.221	171.1	169.7	-1.0	0.2	0.8	-0.3	-0.8
<b>Raw hides, skins, leather, furskins, travel goods, etc.....</b>	VIII	0.583	126.7	127.0	5.0	-0.2	-0.2	0.5	0.2
Articles of leather; travel goods, bags, etc. of various materials.....	42	0.536	127.5	127.8	5.4	-0.2	-0.1	0.5	0.2
<b>Wood, wood charcoal, cork, straw, basketware and wickerwork.....</b>	IX	0.640	138.9	140.9	8.7	3.1	0.9	1.4	1.4
<b>Woodpulp, recovered paper, and paper products.....</b>	X	1.184	114.1	114.0	-1.6	0.6	-0.4	0.5	-0.1
Pulp wood, waste paper, and paperboard (Dec. 2011=100).....	47	0.183	103.5	103.9	-	5.0	-1.6	4.2	0.4
Paper and paperboard; articles of paper pulp, paper or paperboard.....	48	0.789	108.5	108.1	-0.6	-0.1	-0.2	-0.2	-0.4
<b>Textile and textile articles.....</b>	XI	5.177	115.5	115.4	2.2	-0.3	0.2	-0.3	-0.1
Articles of apparel and clothing accessories, knitted or crocheted.....	61	2.000	106.1	105.7	-0.5	-0.2	0.1	-0.6	-0.4

See footnotes at end of table.

**Table 5. U.S. import price indexes and percent changes for selected categories of goods: June 2011 to June 2012 — Continued**

[2000=100, unless otherwise noted]

Description	Harmonized system	Relative importance May 2012 <sup>1</sup>	Index		Percent change				
			May 2012	June 2012	Annual	Monthly			
					June 2011 to June 2012	Feb. 2012 to Mar. 2012	Mar. 2012 to Apr. 2012	Apr. 2012 to May 2012	May 2012 to June 2012
Articles of apparel and clothing accessories, not knitted or crocheted.....	62	1.905	118.1	118.2	6.7	0.1	0.0	0.0	0.1
Made-up or worn textile articles.....	63	0.631	109.9	109.9	-0.6	-1.8	0.5	-0.5	0.0
<b>Headgear, umbrellas, artificial flowers, etc. . .</b>	XII	1.320	118.6	118.5	5.1	0.1	0.1	0.1	-0.1
Footwear and parts of such articles.....	64	1.122	117.6	117.5	5.1	0.1	0.1	0.1	-0.1
<b>Stone, plaster, cement, asbestos, ceramics, glass etc.....</b>	XIII	0.749	132.0	132.1	2.6	0.3	-0.1	0.5	0.1
Articles of stone, plaster, cement, asbestos, or mica (Dec. 2001=100).....	68	0.239	124.7	125.4	3.2	0.2	-0.1	0.2	0.6
Ceramic products.....	69	0.225	142.1	142.1	0.7	0.6	0.0	0.0	0.0
Glass and glassware.....	70	0.285	127.6	127.0	3.3	0.1	0.0	1.0	-0.5
<b>Pearls, stones, precious metals, imitation jewelry, and coins.....</b>	XIV	3.294	204.4	199.2	0.6	2.5	-1.9	-1.4	-2.5
<b>Base metals and articles of base metals.....</b>	XV	4.891	191.9	188.7	-5.7	0.7	-0.1	-0.5	-1.7
Iron and steel.....	72	1.137	247.7	242.7	-7.9	0.2	0.4	0.4	-2.0
Articles of iron or steel.....	73	1.409	161.9	160.8	0.4	0.4	0.2	-0.2	-0.7
Copper and articles thereof.....	74	0.462	364.3	349.2	-11.0	1.4	-1.7	-1.4	-4.1
Nickel and articles thereof (Dec. 2009=100)...	75	0.134	104.4	101.2	-24.2	6.1	-6.4	-5.5	-3.1
Aluminum and articles thereof.....	76	0.706	140.6	137.5	-12.4	1.1	0.4	-1.8	-2.2
Tools, implements, cutlery, spoons and forks, of base metal; parts thereof.....	82	0.360	128.5	127.9	3.9	-0.2	0.7	0.6	-0.5
Miscellaneous articles of base metal.....	83	0.405	135.1	135.1	3.5	-0.2	1.6	0.2	0.0
<b>Machinery, electrical equipment, TV image and sound recorders, parts, etc.....</b>	XVI	24.533	85.9	85.7	-0.1	-0.1	-0.2	0.0	-0.2
Machinery and mechanical appliances; parts thereof.....	84	12.370	89.9	89.9	1.5	0.0	0.0	0.1	0.0
Electrical machinery and equip, sound and TV recorders & reproducers, parts.....	85	12.163	82.0	81.8	-1.6	-0.1	-0.5	-0.2	-0.2
<b>Vehicles, aircraft, vessels and associated transport equipment.....</b>	XVII	10.125	115.7	115.6	0.8	0.5	0.5	-0.1	-0.1
Motor vehicles and their parts.....	87	9.334	114.8	114.6	0.6	0.4	0.4	0.0	-0.2
Aircraft, spacecraft, and parts thereof (Dec. 2002=100).....	88	0.697	118.0	118.0	2.2	1.6	0.0	0.1	0.0
<b>Optical, photo, measuring, medical &amp; musical instruments; &amp; timepieces.....</b>	XVIII	3.182	104.4	104.4	-0.6	0.2	0.2	-0.1	0.0
Optical, photographic, measuring and medical instruments.....	90	2.932	101.9	101.9	-0.7	0.2	0.2	-0.2	0.0
Clocks and watches and parts thereof.....	91	0.190	128.2	128.1	0.2	0.2	0.0	0.0	-0.1
<b>Miscellaneous manufactured articles.....</b>	XX	3.652	112.3	112.8	2.5	0.4	0.0	0.1	0.4
Furniture & stuffed furnishings; lamps & lighting fittings, nesoi; prefab bldgs.....	94	1.945	116.0	116.4	2.6	0.5	0.0	0.0	0.3
Toys, games and sports equipment; parts and accessories thereof.....	95	1.510	105.3	105.4	2.3	0.1	0.1	0.3	0.1
Miscellaneous manufactured articles.....	96	0.197	133.3	137.1	3.1	0.0	0.1	0.0	2.9

1 Relative importance figures are based on 2010 trade values.

NOTES: Data may be revised in each of the three months after original publication.

Dash = Not available

**Table 6. U.S. export price indexes and percent changes for selected categories of goods: June 2011 to June 2012**

[2000=100, unless otherwise noted]

Description	Harmoni- zied system	Relative importance May 2012 <sup>1</sup>	Index		Percent change				
			May 2012	June 2012	Annual	Monthly			
					June 2011 to June 2012	Feb. 2012 to Mar. 2012	Mar. 2012 to Apr. 2012	Apr. 2012 to May 2012	May 2012 to June 2012
<b>Live animals; animal products.....</b>	I	1.885	202.8	203.4	4.7	-0.9	0.9	-1.0	0.3
Meat & edible meat offal (Dec. 2006=100). . .	02	1.099	167.9	166.5	4.5	-0.3	-0.8	0.3	-0.8
Fish and crustaceans, molluscs and other aquatic invertebrates.....	03	0.409	206.7	208.2	11.1	-1.6	4.3	-0.9	0.7
<b>Vegetable products.....</b>	II	5.964	254.9	241.1	-5.9	3.8	3.0	1.9	-5.4
Edible fruit and nuts; peel of citrus fruit or melons.....	08	0.855	137.9	138.1	5.0	4.2	2.2	0.4	0.1
Cereals.....	10	2.148	280.6	264.3	-17.2	2.0	0.6	-2.1	-5.8
Oilseeds and misc. grains, seeds, fruits, plants, straw and fodder.....	12	2.327	290.1	267.6	-0.1	7.1	6.1	4.4	-7.8
<b>Animal or vegetable fats and oils (Dec. 2009=100).....</b>	III	0.501	157.8	148.3	-8.0	4.3	2.0	2.0	-6.0
<b>Prepared foodstuffs, beverages, and tobacco.....</b>	IV	2.715	158.0	156.5	3.0	2.5	1.2	1.2	-0.9
Preparations of vegetables, fruit, nuts or other parts of plants (Dec. 2009=100).....	20	0.321	111.0	111.0	3.4	0.3	0.3	0.4	0.0
Beverages, spirits, and vinegar (Dec. 2008=100).....	22	0.400	110.1	110.2	5.0	2.7	0.3	0.3	0.1
Residues and waste from the food industries; prepared animal feed.....	23	0.818	236.7	232.5	-0.9	4.9	3.8	4.9	-1.8
<b>Mineral products.....</b>	V	8.692	320.7	295.4	-12.2	2.5	2.1	-4.9	-7.9
Mineral fuels, oils and residuals, bituminous substances and mineral waxes.....	27	8.070	316.8	290.6	-12.8	2.7	2.3	-5.3	-8.3
<b>Products of the chemical or allied industries.....</b>	VI	12.179	155.0	154.4	0.3	0.2	-0.1	-0.2	-0.4
Inorganic chemicals.....	28	0.990	183.8	180.9	-7.4	-0.5	0.1	-0.5	-1.6
Organic chemicals.....	29	3.451	168.8	166.7	-1.1	0.5	-0.1	-0.8	-1.2
Pharmaceutical products.....	30	3.138	124.5	124.0	-1.0	0.2	-0.3	0.1	-0.4
Essential oils and resinoids; perfumery cosmetic or toilet preparations.....	33	0.757	136.1	137.1	4.5	0.4	0.2	0.1	0.7
Soap; lubricants; waxes, polishing or scouring products; candles, pastes.....	34	0.464	123.2	123.2	0.3	-0.1	0.2	0.1	0.0
Miscellaneous chemical products.....	38	1.753	152.9	151.9	0.8	0.6	-0.2	-0.1	-0.7
<b>Plastics and articles thereof; rubber and articles thereof.....</b>	VII	5.576	152.8	149.0	-1.6	0.8	1.8	-0.5	-2.5
Plastics and articles thereof.....	39	4.458	142.8	139.8	-1.9	0.4	1.6	-0.5	-2.1
Rubber and articles thereof.....	40	1.118	200.3	192.5	-0.4	2.8	2.6	-0.9	-3.9
<b>Raw hides, skins, leather, furskins, travel goods, etc.....</b>	VIII	0.377	133.8	130.0	-5.4	3.1	2.1	0.9	-2.8
<b>Wood, wood charcoal, cork, straw, basketware and wickerwork.....</b>	IX	0.537	109.3	109.7	0.3	-0.3	2.4	-0.6	0.4
<b>Woodpulp, recovered paper, and paper products.....</b>	X	2.307	118.1	117.6	-7.5	0.3	0.8	-0.8	-0.4
Woodpulp and recovered paper.....	47	0.642	126.9	125.3	-18.0	1.4	0.2	-0.2	-1.3
Paper and paperboard; articles of paper pulp, paper or paperboard.....	48	1.215	116.6	116.5	-3.2	0.0	1.0	-1.4	-0.1
Printed material.....	49	0.450	120.4	120.3	1.9	0.0	0.7	0.1	-0.1
<b>Textile and textile articles.....</b>	XI	1.938	128.9	124.7	-16.1	-1.4	-0.1	-1.7	-3.3
Cotton, including yarns and woven fabrics thereof.....	52	0.618	148.5	132.0	-42.5	-4.9	-1.2	-5.4	-11.1
<b>Stone, plaster, cement, asbestos, ceramics, glass etc. (Dec. 2008=100).....</b>	XIII	0.738	117.7	117.7	1.6	0.5	-0.1	0.0	0.0
Glass and glassware.....	70	0.398	98.5	98.4	-1.0	0.2	-0.3	0.0	-0.1

See footnotes at end of table.

**Table 6. U.S. export price indexes and percent changes for selected categories of goods: June 2011 to June 2012 — Continued**

[2000=100, unless otherwise noted]

Description	Harmonized system	Relative importance May 2012 <sup>1</sup>	Index		Percent change				
			May 2012	June 2012	Annual	Monthly			
					June 2011 to June 2012	Feb. 2012 to Mar. 2012	Mar. 2012 to Apr. 2012	Apr. 2012 to May 2012	May 2012 to June 2012
<b>Pearls, stones, precious metals, imitation jewelry, and coins.....</b>	XIV	5.249	280.7	277.0	-0.4	1.7	-3.1	-0.9	-1.3
<b>Base metals and articles of base metals.....</b>	XV	5.640	178.9	172.9	-7.6	0.4	-0.2	-0.2	-3.4
Iron and steel.....	72	1.772	225.9	211.6	-13.5	-0.8	-0.6	0.7	-6.3
Articles of iron or steel.....	73	1.357	173.7	172.9	1.4	1.1	0.3	-0.1	-0.5
Copper and articles thereof.....	74	0.677	261.4	242.4	-12.9	2.1	-0.3	-1.7	-7.3
Aluminum and articles thereof.....	76	0.830	127.8	124.5	-10.5	0.2	0.1	-0.9	-2.6
Tools, implements, cutlery, spoons and forks, of base metal; parts thereof.....	82	0.374	129.2	129.2	2.8	0.0	0.0	0.0	0.0
Miscellaneous articles of base metal.....	83	0.319	138.0	138.0	1.8	1.0	0.0	0.0	0.0
<b>Machinery, electrical equipment, TV image and sound recorders, parts, etc.....</b>	XVI	27.536	97.4	97.3	0.9	0.1	0.0	0.1	-0.1
Machinery and mechanical appliances; parts thereof.....	84	15.962	110.5	110.6	1.7	0.2	0.1	-0.1	0.1
Electrical machinery and equipment and parts and accessories thereof.....	85	11.574	83.1	82.9	-0.1	0.1	-0.2	0.2	-0.2
<b>Vehicles, aircraft, vessels and associated transport equipment.....</b>	XVII	10.910	126.9	126.9	2.7	0.2	0.3	0.2	0.0
Motor vehicles and their parts.....	87	7.217	113.2	113.2	3.2	0.2	0.3	0.1	0.0
<b>Optical, photo, measuring, medical &amp; musical instruments; &amp; timepieces.....</b>	XVIII	5.770	106.1	105.8	0.5	0.1	0.2	0.5	-0.3
<b>Miscellaneous manufactured articles.....</b>	XX	1.339	110.4	110.5	0.5	0.0	1.3	0.0	0.1
Furniture; stuffed furnishings; lamps and lighting fittings nesoi;.....	94	0.691	119.9	120.1	0.8	0.1	0.3	0.0	0.2
Toys, games and sports equipment; parts and accessories thereof.....	95	0.516	91.2	91.2	-1.6	0.1	0.0	0.0	0.0

1 Relative importance figures are based on 2010 trade values.

NOTES: Data may be revised in each of the three months after original publication.

Dash = Not available

**Table 7. U.S. import price indexes and percent changes by locality of origin: June 2011 to June 2012**  
 [2000=100, unless otherwise noted]

Description	Percent of U.S. imports <sup>1</sup>	Index		Percent change				
		May 2012	June 2012	Annual	Monthly			
				June 2011 to June 2012	Feb. 2012 to Mar. 2012	Mar. 2012 to Apr. 2012	Apr. 2012 to May 2012	May 2012 to June 2012
<b>Industrialized Countries<sup>2</sup></b> .....	38.296	132.2	130.1	-2.8	0.5	-0.8	0.3	-1.6
Nonmanufactured articles.....	4.447	214.3	197.7	-21.5	-3.6	-5.2	-1.6	-7.7
Manufactured articles.....	33.487	125.4	124.4	0.2	1.2	-0.2	0.6	-0.8
<b>Other Countries<sup>3</sup></b> .....	61.704	143.2	138.4	-2.0	1.7	0.1	-1.3	-3.4
Nonmanufactured articles.....	12.907	374.4	336.8	-8.3	5.4	-0.4	-3.6	-10.0
Manufactured articles.....	48.593	111.9	110.9	0.3	0.4	0.3	-0.5	-0.9
<b>Canada</b> .....	14.414	150.8	146.4	-8.3	-0.6	-1.4	-0.5	-2.9
Nonmanufactured articles.....	4.027	201.1	185.7	-23.2	-4.3	-5.4	-2.0	-7.7
Manufactured articles.....	10.122	141.1	139.8	-1.5	1.0	0.3	0.1	-0.9
<b>European Union<sup>4</sup></b> .....	15.813	136.2	135.2	-0.5	1.0	0.0	-0.1	-0.7
Nonmanufactured articles.....	0.262	403.4	370.4	0.8	2.8	0.0	0.0	-8.2
Manufactured articles.....	15.467	132.3	131.5	-0.6	0.9	0.0	-0.1	-0.6
<b>France (Dec. 2003=100)</b> .....	1.736	121.4	120.9	0.8	0.4	0.0	0.0	-0.4
<b>Germany (Dec. 2003=100)</b> .....	4.265	114.8	114.4	-1.3	0.8	-0.1	-0.2	-0.3
<b>United Kingdom (Dec. 2003=100)</b> .....	2.397	134.6	132.2	-2.2	1.3	0.0	-1.5	-1.8
<b>Latin America<sup>5</sup></b> .....	19.049	182.1	174.9	-3.6	1.8	-0.5	-1.3	-4.0
Nonmanufactured articles.....	5.633	398.9	363.3	-7.2	4.3	-1.4	-3.4	-8.9
Manufactured articles.....	13.328	135.0	133.6	-1.8	0.2	0.1	-0.1	-1.0
<b>Mexico (Dec. 2003=100)</b> .....	12.091	147.6	144.4	-3.1	1.2	-0.3	-0.9	-2.2
Nonmanufactured articles (Dec. 2008=100).....	2.017	213.8	195.8	-6.5	5.5	-1.4	-4.0	-8.4
Manufactured articles (Dec. 2008=100)....	10.028	95.3	95.0	-2.2	-0.1	0.0	-0.1	-0.3
<b>Pacific Rim (Dec. 2003=100)<sup>6</sup></b> .....	34.659	104.6	104.5	-0.1	-0.1	-0.1	-0.1	-0.1
<b>China (Dec. 2003=100)</b> .....	19.583	105.0	105.0	1.3	-0.1	-0.4	0.0	0.0
<b>Japan</b> .....	6.349	102.5	102.6	1.1	-0.1	0.0	0.1	0.1
<b>Asian NICs<sup>7</sup></b> .....	5.471	90.7	90.8	-1.7	-0.1	0.3	-0.1	0.1
<b>ASEAN (Dec. 2003=100)<sup>8</sup></b> .....	5.652	106.0	105.1	0.6	0.5	0.0	-0.2	-0.8
<b>Asia Near East (Dec. 2003=100)<sup>9</sup></b> .....	3.948	301.2	277.2	1.2	4.6	2.0	1.2	-8.0

1 Percentage of trade figures are based on 2010 trade values.

2 Includes Western Europe, Canada, Japan, Australia, New Zealand and South Africa.

3 Includes Eastern Europe, Latin America, OPEC countries, and other countries in Asia, Africa and the Western Hemisphere.

4 Includes European Union countries.

5 Includes Mexico, Central America, South America and the Caribbean.

6 Includes China, Japan, Australia, Brunei, Indonesia, Macao, Malaysia, New Zealand, Papua New Guinea, Philippines and Asian Newly Industrialized Countries.

7 Asian Newly Industrialized Countries. Includes Hong Kong, Singapore, South Korea and Taiwan.

8 Association of Southeast Asian Nations. Includes Brunei, Cambodia, Indonesia, Laos, Malaysia, Myanmar, Philippines, Singapore, Thailand and Vietnam.

9 Includes Bahrain, Iran, Iraq, Israel, Jordan, Kuwait, Lebanon, Oman, Qatar, Saudi Arabia, Syria, United Arab Emirates and Yemen.

NOTES: Data may be revised in each of the three months after original publication.

Regions are not mutually exclusive.

Dash = Not available

**Table 8. U.S. international price indexes and percent changes for selected transportation services: June 2011 to June 2012**

[2000=100, unless otherwise noted]

Description	Relative importance May 2012 <sup>1</sup>	Index		Percent change				
		May 2012	June 2012	Annual	Monthly			
				June 2011 to June 2012	Feb. 2012 to Mar. 2012	Mar. 2012 to Apr. 2012	Apr. 2012 to May 2012	May 2012 to June 2012
<b>Air Freight</b>								
<b>Import Air Freight</b> .....	100.000	177.5	178.1	-3.4	2.6	1.9	0.3	0.3
Europe (Dec. 2003=100).....	24.177	165.3	159.9	-5.0	3.0	-1.9	1.2	-3.3
Asia.....	71.372	157.8	160.3	-3.0	2.6	3.4	0.1	1.6
<b>Export Air Freight</b> .....	100.000	150.7	148.0	0.4	1.5	0.9	0.3	-1.8
Europe (Dec. 2006=100).....	36.156	136.0	133.5	0.2	1.5	1.1	0.2	-1.8
<b>Inbound Air Freight</b> .....	100.000	161.5	161.4	-1.8	2.1	1.4	0.2	-0.1
Europe (Dec. 2003=100).....	25.034	150.2	144.6	-5.3	2.7	-0.3	0.7	-3.7
Asia.....	63.576	145.2	147.3	-0.7	2.2	2.3	0.1	1.4
<b>Outbound Air Freight</b> .....	100.000	150.2	148.6	4.6	1.2	2.5	0.2	-1.1
Europe (Dec. 2003=100).....	30.489	166.6	163.8	3.3	1.2	0.2	0.5	-1.7
Asia.....	49.935	143.5	142.5	5.9	1.4	4.6	0.0	-0.7
<b>Air Passenger Fares</b>								
<b>Import Air Passenger Fares</b> .....	100.000	181.1	199.8	8.6	-1.0	0.7	0.6	10.3
Europe.....	38.496	185.3	222.3	7.9	-2.4	3.8	-1.2	20.0
Asia.....	27.361	157.8	169.3	5.9	-6.6	0.8	6.1	7.3
Latin America/Caribbean.....	11.792	171.0	173.9	3.8	0.3	2.1	-6.0	1.7
<b>Export Air Passenger Fares</b> .....	100.000	191.8	197.8	6.0	-0.8	0.7	2.9	3.1
Europe.....	26.914	221.0	253.5	4.8	-4.7	7.7	-1.8	14.7
Asia.....	29.168	179.2	177.3	8.7	3.0	0.7	6.6	-1.1
Latin America/Caribbean.....	22.356	207.8	212.3	15.7	-0.9	-7.7	-4.7	2.2

<sup>1</sup> Relative importance figures are based on 2010 trade values.

NOTES: Data may be revised in each of the three months after original publication.

Dash = Not available

## TECHNICAL NOTE

**Import and Export Merchandise and Services Price Indexes** -- All indexes use a modified Laspeyres formula and are not seasonally adjusted. Price indexes are reweighted annually, with a two-year lag in the weights. Published series use a base year of 2000=100 where possible. More detailed index series and additional information may be obtained at <http://www.bls.gov/mxp>, or by calling (202) 691-7101.

**Merchandise Goods Classification Systems** -- The merchandise price indexes are published using three classification systems. Items are classified by end use according to the Bureau of Economic Analysis Classification System, by industry according to the North American Industry Classification System (NAICS), and by product category according to the Harmonized System (HS). While classification by end use and product category are self-explanatory, some notes are in order for classifying items by industry. In the NAICS imports and exports tables, items are classified by output industry, not input industry. As an example, NAICS import index 326 (plastics and rubber products manufacturing) include outputs such as manufactured plastic rather than inputs such as petroleum. The NAICS classification structure also matches the classification system used by the PPI (Producer Price Index) to produce the NAICS primary products indexes.

**Import Price Indexes** -- Products have been classified by the Harmonized Tariff Schedule of the United States Annotated (TSUSA). Import prices are based on U.S. dollar prices paid by the U.S. importer. The prices are generally either "free on board" (f.o.b.) foreign port or "cost, insurance, and freight" (c.i.f.) U.S. port transaction prices, depending on the practices of the individual industry. The index for crude petroleum is calculated from data collected by the U.S. Department of Energy.

**Export Price Indexes** -- Products have been classified by the Harmonized Schedule B classification system of the U.S. Bureau of the Census. The prices used are generally either "free alongside ship" (f.a.s.) factory or "free on board" (f.o.b.) transaction prices, depending on the practices of the individual industry. Prices used in the grain index, excluding rice, are obtained from the U.S. Department of Agriculture.

**Services Price Indexes** -- Starting in September 2008 the Import Air Passenger Fares Indexes represent changes in the average revenue per passenger received by foreign carriers from U.S. residents and are calculated from data obtained from an airline consulting service. These data include tickets sold by travel agencies and travel websites. Tickets sold directly by the airlines are excluded, as are frequent flyer tickets generally. Starting in January 2008 the Export Air Passenger Fares Indexes represent changes in the average revenue per passenger received by U.S. carriers from foreign residents and are calculated from data collected directly from airlines. These data include frequent flyer tickets and those sold by consolidators. Taxes and fees are included in the Import Air Passenger Fares Index and excluded from the Export Air Passenger Fares Index. The Air Freight Indexes are calculated from data collected directly from airlines. These data exclude mail and passenger baggage. The scope of the service being priced is the movement of freight from airport to airport only, and does not include any ground transportation or port service. The Air Freight Indexes are presented using two definitions: Balance of Payments (which represent transactions between U.S. and foreign residents) and International (which represent transactions inbound to and outbound from the U.S.). Fact sheets specifying detailed information for each services industry are available at <http://www.bls.gov/mxp> under "MXP Publications."

**Import Indexes by Locality of Origin** -- Prices used in these indexes are a subset of the data collected for the Import Price Indexes. Beginning with January 2002, the indexes are defined by locality of origin using a nomenclature based upon the North American Industry Classification System (NAICS). Nonmanufactured goods are defined as NAICS 11 and 21 and manufactured goods are defined as NAICS 31-33.

**Revision Policy** -- To reflect the availability of late reports and corrections by respondents, monthly data may be revised in each of the three months after original publication. After three months, no further data revisions take place. So, for example, data released in the January release will be subject to revision in the releases for February, March, and April.

**Uses of the Data** -- The primary use of the indexes is to deflate trade statistics, notably the foreign trade sector of the National Income and Product Accounts constructed by the Department of Commerce. Other published indexes are useful for general market analysis. For trade in international services, Balance of Payments indexes are used for deflating National Income and Product Accounts, while International indexes are more appropriate for market analysis. Merchandise and services indexes also can be used to study U.S. competitiveness and to compute price elasticities, and the merchandise import indexes by country or region of origin are useful in terms of trade analysis.

**E-Mail Subscription** -- The U.S. Import and Export Price Indexes news release is available through an e-mail subscription service at (<http://www.bls.gov/bls/list.htm>).

**Additional Information** -- More detailed data are available on the Import/Export Price Indexes home page at (<http://www.bls.gov/mxp>). Flat Files and the FTP server are available for users requiring access to either a large volume of time series data or other related documentation. The FTP site can be accessed at <ftp://ftp.bls.gov>. For technical assistance in using the BLS Internet site, send e-mail to ([labstat.helpdesk@bls.gov](mailto:labstat.helpdesk@bls.gov)). For Import/Export Price Index data requests, send e-mail to ([mxpinfo@bls.gov](mailto:mxpinfo@bls.gov)).

Information from this release will be made available to sensory impaired individuals upon request. Voice phone: 202-691-5200; Federal Relay Service: 1-800-877-8339.