


LOC I-CDB <b>110.3</b>	APP CRS <b>324°</b>	Rwy Idg <b>10415</b> TDZE <b>89</b> Apt Elev <b>96</b>
---------------------------	------------------------	--

# LOC/DME BC RWY 32

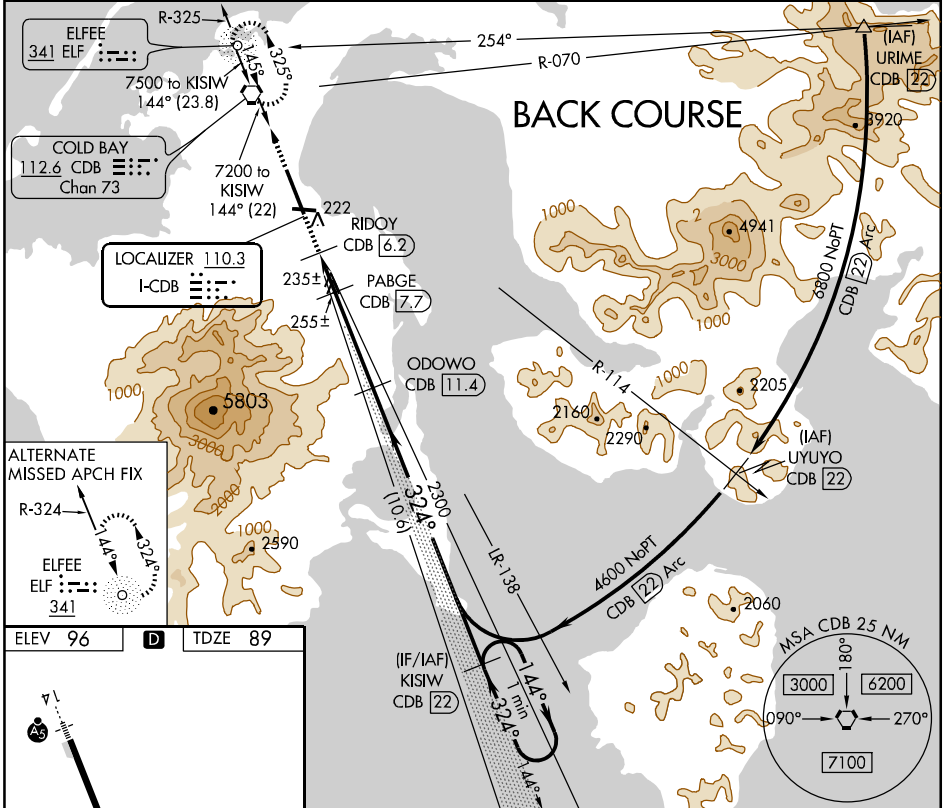
COLD BAY (CDB) (PACD)

▼ When VGSI inoperative, circling Rwy 26 and straight-in/circling Rwy 32 NA at night. Circling NA for Cats A and B southwest of Rwy 14-32 at night. Circling NA for Cats C and D southwest of Rwy 14-32. DME from CDB VORTAC. Simultaneous reception of I-CDB and CDB DME required. Visibility reduction by helicopters NA.

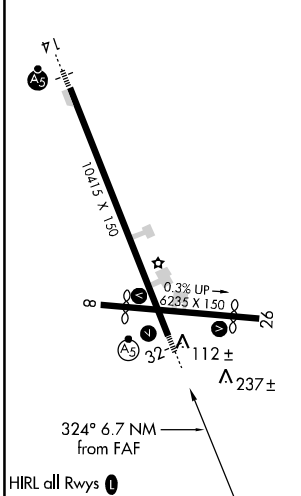
MALSR 

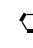
MISSED APPROACH: Climb to 4000 direct CDB VORTAC and hold, continue climb-in-hold to 4000.

ASOS <b>135.75</b>	ANCHORAGE CENTER <b>118.5 278.3</b>	COLD BAY RADIO <b>123.6 (CTAF) 0</b>
-----------------------	--	---



ELEV 96	<b>D</b>	TDZE 89
---------	----------	---------



4000	CDB 	L izer unusable inside CDB VORTAC 6.2 DME	KISIW CDB 22	One Minute Holding Pattern
		PABGE CDB 7.7	ODOWO CDB 11.4	
	RIDOY CDB 6.2			
		3.09° TCH 45	1120	2300
			144°	4600
			324°	
				Disregard glide slope indications.
CATEGORY	A	B	C	D
S-32		540-1¼	451 (500-1¼)	
CIRCLING	540-1¾ 444 (500-1¾)	560-1¾	464 (500-1¾)	660-2 564 (600-2)

AK, 05 APR 2012 to 31 MAY 2012

AK, 05 APR 2012 to 31 MAY 2012

# RNAV (GPS) RWY 15

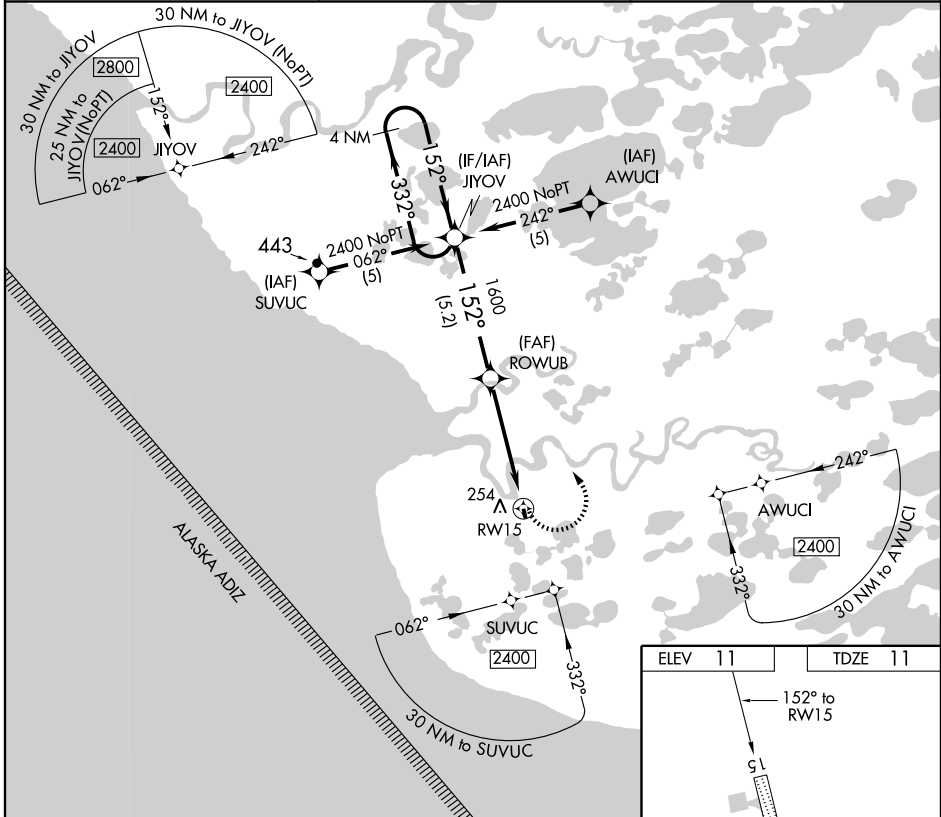
KIPNUK (IIK) (PAKI)

APP CRS	Rwy Idg	<b>2125</b>
<b>152°</b>	TDZE	<b>11</b>
	Apt Elev	<b>11</b>

**⚠ NA** Procedure NA at night. GPS or RNP-0.3 required, DME/DME RNP-0.3 NA. VDP NA with Mekoryuk altimeter setting. If local altimeter setting not received, use Mekoryuk altimeter setting and increase all MDAs 180 feet.

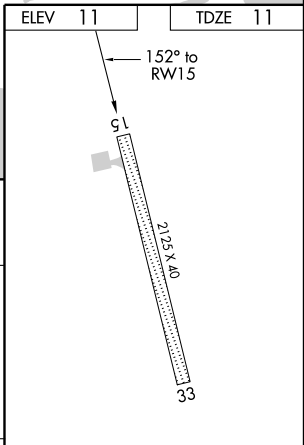
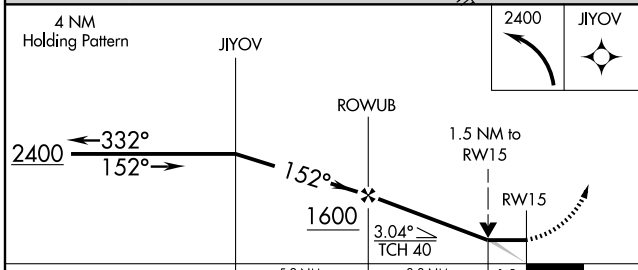
**MISSED APPROACH:** Climbing left turn to 2400 direct JIYOV and hold.

ASOS <b>118.325</b>	ANCHORAGE CENTER <b>125.2 372.0</b>	CTAF <b>122.7</b>
------------------------	--	----------------------



AK, 05 APR 2012 to 31 MAY 2012

AK, 05 APR 2012 to 31 MAY 2012



CATEGORY	A	B	C	D
LNNAV MDA	540-1	529 (600-1)		NA
CIRCLING	580-1	569 (600-1)		NA