

## Chrysler RAM PHEV Fleet

Number of vehicles: 107

Date range of data received: 3/1/2012 to 3/31/2012

Reporting period: March 2012

Number of vehicle days driven: 2010

### All Trips Combined

|  |         |
|--|---------|
| Overall gasoline fuel economy (mpg)  | 19      |
| Overall AC electrical energy consumption (AC Wh/mi) <sup>1</sup>           | 93      |
| Overall DC electrical energy consumption (DC Wh/mi) <sup>2</sup>           | 71      |
| Overall DC electrical energy captured from regenerative braking (DC Wh/mi) | 43      |
| Total number of trips  | 13,167  |
| Total distance traveled (mi)   | 128,868 |

### Trips in Charge Depleting (CD) mode<sup>3</sup>

|  |          |
|--|----------|
| Gasoline fuel economy (mpg)                              | 24       |
| DC electrical energy consumption (DC Wh/mi) <sup>4</sup> | 202      |
| Number of trips  | 5,513    |
| Percent of trips city   highway                          | 92%   8% |
| Distance traveled (mi)                                   | 35,205   |
| Percent of total distance traveled                       | 27%      |

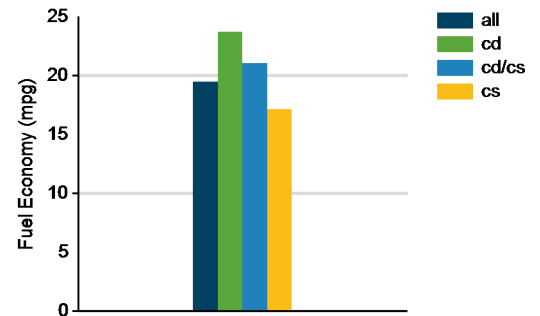
### Trips in both Charge Depleting & Charge Sustaining (CD/CS) modes<sup>5</sup>

|  |                 |
|--|-----------------|
| Gasoline fuel economy (mpg)                              | 21              |
| DC electrical energy consumption (DC Wh/mi) <sup>6</sup> | 71              |
| Number of trips  | 1,408           |
| Percent of trips city   highway                          | 70%   30%       |
| Distance traveled CD   CS (mi)                           | 12,032   18,807 |
| Percent of total distance traveled CD   CS               | 9%   15%        |

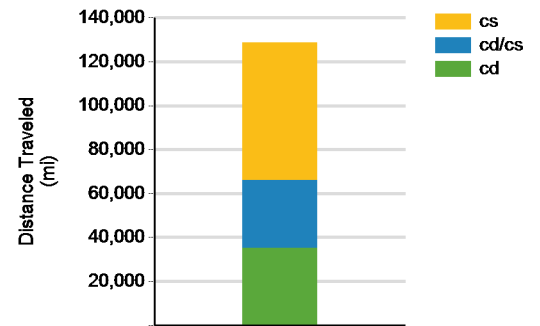
### Trips in Charge Sustaining (CS) mode<sup>7</sup>

|                                    |           |
|------------------------------------|-----------|
| Gasoline fuel economy (mpg)        | 17        |
| Number of trips                    | 6,246     |
| Percent of trips city   highway    | 89%   11% |
| Distance traveled (mi)             | 62,878    |
| Percent of total distance traveled | 49%       |

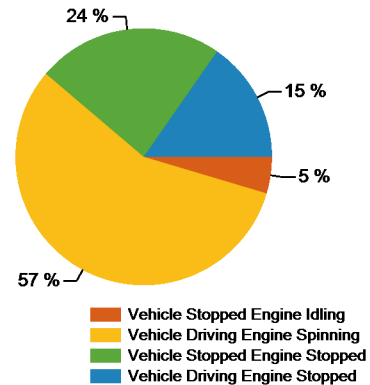
Gasoline Fuel Economy By Trip Type



Distance Traveled By Trip Type



Percent of Drive Time by Operating Mode



Notes: 1 - 9. Please see <http://avt.inl.gov/pdf/phev/chryslerreportnotes.pdf> for an explanation of all PHEV Fleet Testing Report notes. This document also includes all report changes to date.

The Chrysler RAM PHEV Fleet was designed as a demonstration program of customer duty cycles related to plug-in electric vehicles and may not necessarily demonstrate optimized fuel economy.

Vehicle fuel economy is based on customer usage and may not be representative of maximum potential fuel economy.

**Trips in Charge Depleting (CD) mode**

|  | City | Highway |
|--|------|---------|
| Gasoline fuel economy (mpg)                          | 23   | 26      |
| DC electrical energy consumption (DC Wh/mi)          | 220  | 162     |
| Percent of miles with internal combustion engine off | 15%  | 3%      |
| Average trip Agressiveness                           | 6.1  | 3.6     |
| Percent of miles with air conditioning selected      | 76%  | 87%     |
| Average trip distance (mi)                           | 5    | 26      |

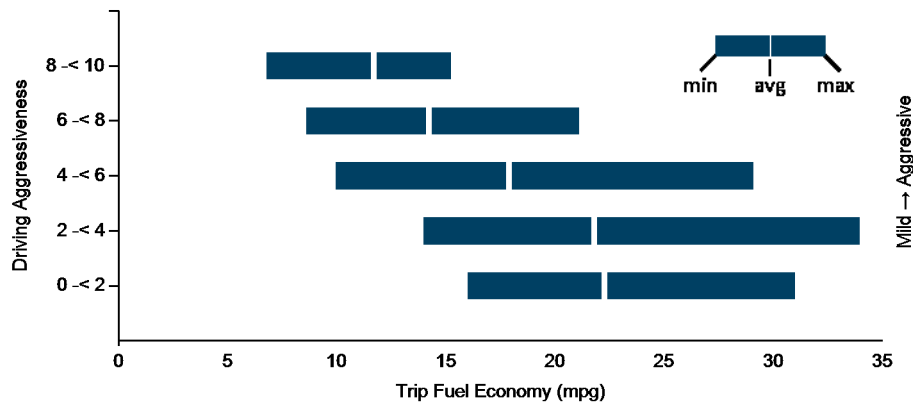
**Trips in Charge Depleting and Charge Sustaining (CD/CS) mode**

|  |     |     |
|--|-----|-----|
| Gasoline fuel economy (mpg)                          | 20  | 22  |
| DC electrical energy consumption (DC Wh/mi)          | 87  | 61  |
| Percent of miles with internal combustion engine off | 13% | 2%  |
| Average trip Agressiveness                           | 5.4 | 2.7 |
| Percent of miles with air conditioning selected      | 77% | 88% |
| Average trip distance (mi)                           | 12  | 45  |

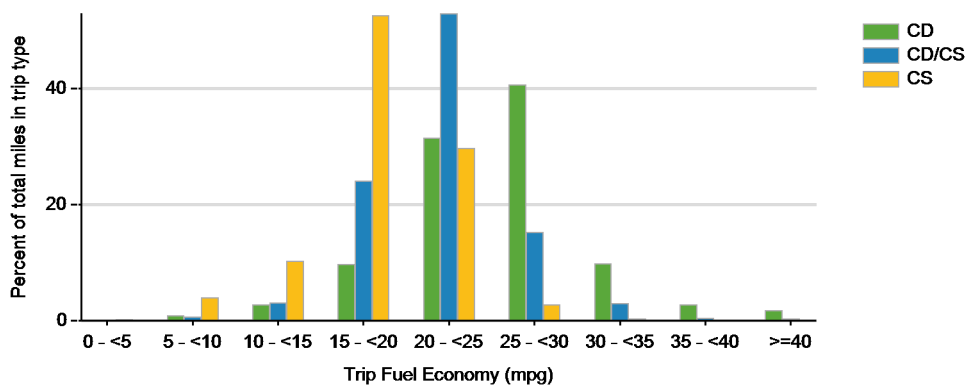
**Trips in Charge Sustaining (CS) mode**

|  |     |     |
|--|-----|-----|
| Gasoline fuel economy (mpg)                          | 16  | 18  |
| Percent of miles with internal combustion engine off | 11% | 2%  |
| Average trip Agressiveness                           | 5.8 | 2.5 |
| Percent of miles with air conditioning selected      | 78% | 88% |
| Average trip distance (mi)                           | 6   | 44  |

**Effect of Driving Aggressiveness on Fuel Economy<sup>a</sup>**



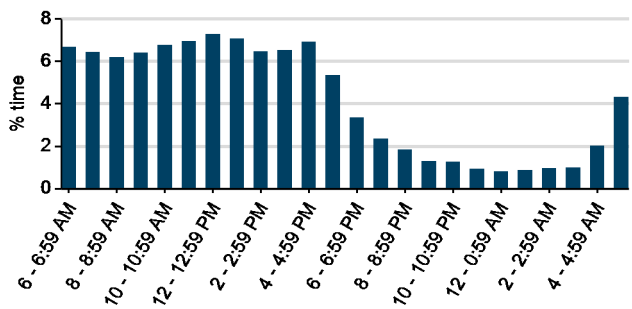
**Trip Fuel Economy Distribution By Trip Type**



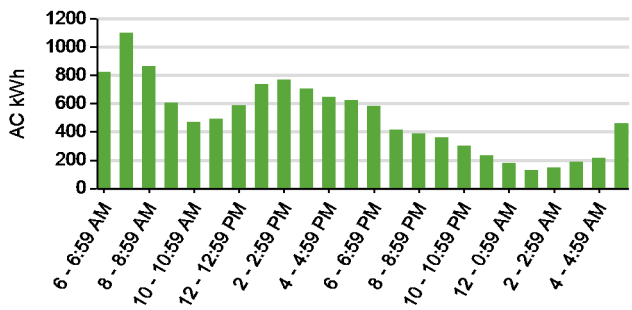
Plug-in charging

|  |        |       |
|--|--------|-------|
| Average number of charging events per vehicle per month when driven              | 19.13  |       |
| Average number of charging events per vehicle per day when driven                | 1.02   |       |
| Average distance driven between charging events (mi)                             | 62.95  |       |
| Average number of trips between charging events                                  | 6.43   |       |
| Average time charging per charging event (hr)                                    | 2.26   |       |
| Average energy per charging event (AC kWh)                                       | 5.88   |       |
| Average charging energy per vehicle per month (AC kWh)                           | 112.58 |       |
| Total number of charging events  | 2,047  |       |
| Number of charging events at Level 1   Level 2                                   | 508    | 1533  |
| Total charging energy consumed (AC kWh)  | 12,046 |       |
| Charging energy consumed at Level 1   Level 2 (AC kWh)                           | 2,296  | 9,750 |
| Percent of total charging energy from Level 1   Level 2                          | 19%    | 81%   |
| Average time to charge from 20% to 100% SOC (hrs) Level 1   Level 2 <sup>9</sup> | 11.65  | 2.80  |

Time of Day When Driving



Time of Day When Charging



Time of Day When Plugging In

