

## Chrysler RAM PHEV Fleet

Number of vehicles: 10

Date range of data received: 7/1/2011 to 7/29/2011

Reporting period: July 2011

Number of vehicle days driven: 135

### All Trips Combined

Overall gasoline fuel economy (mpg)	15
Overall AC electrical energy consumption (AC Wh/mi) <sup>1</sup>	111
Overall DC electrical energy consumption (DC Wh/mi) <sup>2</sup>	71
Overall DC electrical energy captured from regenerative braking (DC Wh/mi)	61
Total number of trips	1,135
Total distance traveled (mi)	4,408

### Trips in Charge Depleting (CD) mode<sup>3</sup>

Gasoline fuel economy (mpg)	22
DC electrical energy consumption (DC Wh/mi) <sup>4</sup>	296
Number of trips	264
Percent of trips city   highway	100%   0%
Distance traveled (mi)	781
Percent of total distance traveled	18%

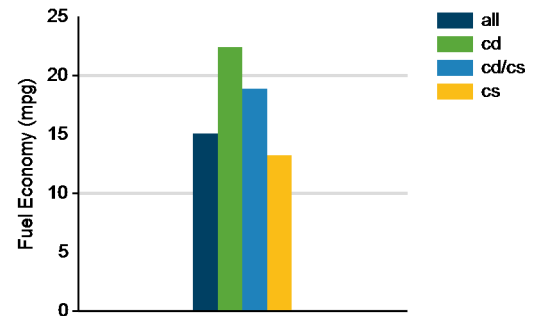
### Trips in both Charge Depleting & Charge Sustaining (CD/CS) modes<sup>5</sup>

Gasoline fuel economy (mpg)	19
DC electrical energy consumption (DC Wh/mi) <sup>6</sup>	141
Number of trips	44
Percent of trips city   highway	96%   4%
Distance traveled CD   CS (mi)	333   389
Percent of total distance traveled CD   CS	8%   9%

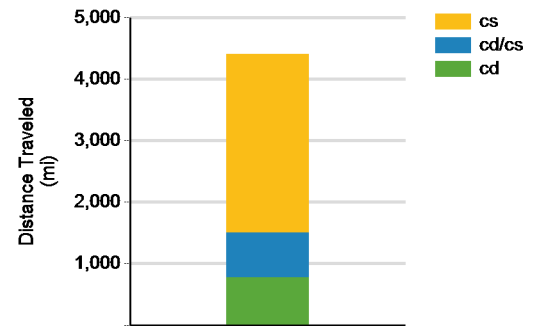
### Trips in Charge Sustaining (CS) mode<sup>7</sup>

Gasoline fuel economy (mpg)	13
Number of trips	827
Percent of trips city   highway	100%   0%
Distance traveled (mi)	2,905
Percent of total distance traveled	66%

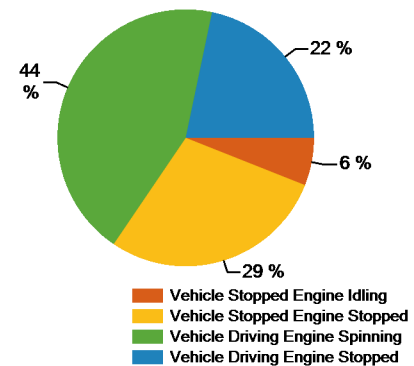
Gasoline Fuel Economy By Trip Type



Distance Traveled By Trip Type



Percent of Drive Time by Operating Mode



Notes: 1 - 9. Please see <http://avt.inl.gov/pdf/phev/chryslerreportnotes.pdf> for an explanation of all PHEV Fleet Testing Report notes.

**Trips in Charge Depleting (CD) mode**

	City	Highway
Gasoline fuel economy (mpg)	23	20
DC electrical energy consumption (DC Wh/mi)	301	172
Percent of miles with internal combustion engine off	24%	1%
Average trip Agressiveness	4.3	2.4
Percent of miles with air conditioning selected	90%	100%
Average trip distance (mi)	3	32

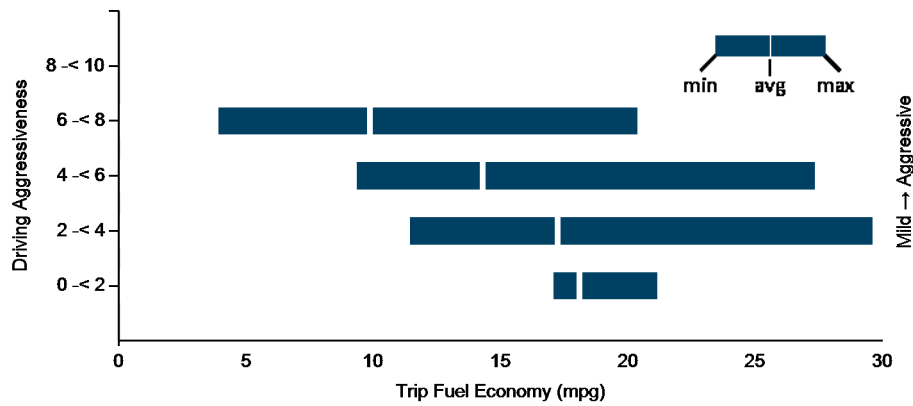
**Trips in Charge Depleting and Charge Sustaining (CD/CS) mode**

Gasoline fuel economy (mpg)	19	20
DC electrical energy consumption (DC Wh/mi)	147	78
Percent of miles with internal combustion engine off	22%	2%
Average trip Agressiveness	4	1.9
Percent of miles with air conditioning selected	100%	100%
Average trip distance (mi)	16	32

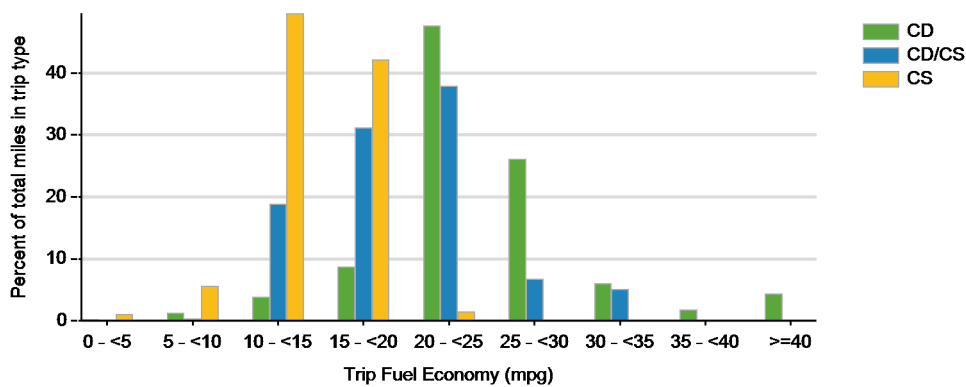
**Trips in Charge Sustaining (CS) mode**

Gasoline fuel economy (mpg)	13	17
Percent of miles with internal combustion engine off	16%	2%
Average trip Agressiveness	4.3	2
Percent of miles with air conditioning selected	94%	100%
Average trip distance (mi)	3	36

**Effect of Driving Aggressiveness on Fuel Economy<sup>a</sup>**



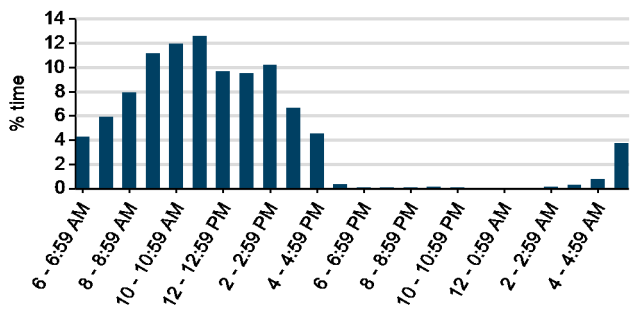
**Trip Fuel Economy Distribution By Trip Type**



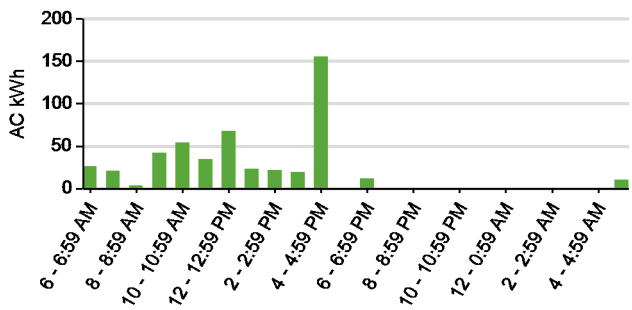
Plug-in charging

Average number of charging events per vehicle per month when driven	9.60	
Average number of charging events per vehicle per day when driven	0.71	
Average distance driven between charging events (mi)	45.91	
Average number of trips between charging events	11.82	
Average time charging per charging event (hr)	1.20	
Average energy per charging event (AC kWh)	5.12	
Average charging energy per vehicle per month (AC kWh)	49.13	
Total number of charging events	96	
Number of charging events at Level 1   Level 2	5	90
Total charging energy consumed (AC kWh)	491.33	
Charging energy consumed at Level 1   Level 2 (AC kWh)	40.11	451.21
Percent of total charging energy from Level 1   Level 2	8%	92%
Average time to charge from 20% to 100% SOC (hrs) Level 1   Level 2 <sup>9</sup>	18.12	2.21

Time of Day When Driving



Time of Day When Charging



Time of Day When Plugging In

