

MHV Fleet Testing - Summary Fact Sheet



Advanced Vehicle Testing Activity

2010 Smart fortwo

VIN# WME4513341K406644

Vehicle Specifications

Engine: 1.0 L I-3

Battery: 60 Ah, 680 A EN, VRLA

Seatbelt Positions: Two

Payload: 507 lbs

Features:

Integrated stop-start

Brake energy recuperation

Fleet Performance

Operating Cost:

Purchase Cost: \$13,917 (9/10)*

Kelley Blue Book: Not Available

Sale Price: In Operation

Maintenance Cost: \$0.03/mile

Operating Cost: \$.15/mile**

Total Ownership Cost: ***

Description:

This vehicle is operated throughout the valley of Phoenix, Arizona by EZ Messenger, a legal document courier business. It is operated five days a week, transferring documents between courts, law offices, and medical facilities on city streets and urban freeways.

See HEVAmerica Baseline Performance Fact Sheet for more information

Operating Performance:

Total miles driven: 54,209

Cumulative MPG: 36.3

Major Operations & Maintenance

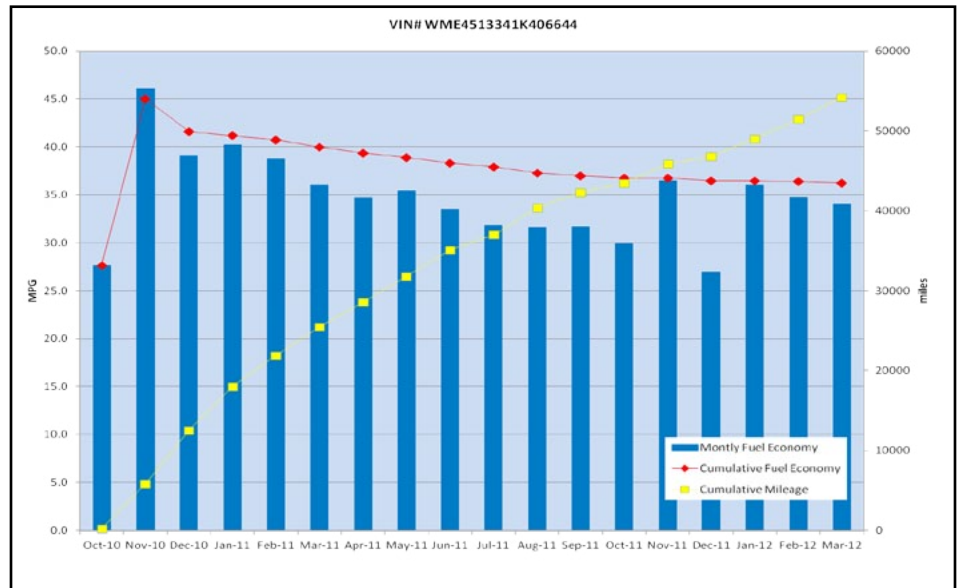
Events:

None

*Purchase includes dealer price with options plus taxes. It does not include title, license, registration, extended warranty or delivery fee costs.

**Operating costs includes insurance, fuel, and registration costs

***This vehicle is not available for normal purchase in the United States so no ownership costs can be calculated



Monthly MPG = (miles driven)/(gallons of fuel purchased). Monthly variation in reported MPG may occur due to the difference in fuel tank level at the beginning and end of the month.