

MHV Fleet Testing - Summary Fact Sheet



Advanced Vehicle Testing Activity

2010 Volkswagen Golf

VIN# WVVZZZ1KZAP125777

Vehicle Specifications

Engine: 2.0 L I-4

Battery: 68 Ah, 380 A (DIN),
680 A EN/SAE, AGM battery

Seatbelt Positions: Five

Payload: 1,100 lbs

Features:

- Integrated stop-start
- Brake energy recuperation

Fleet Performance

Operating Cost:

Purchase Cost: \$31,064 (9/10)*

Kelley Blue Book: Not Available

Sale Price: In Operation

Maintenance Cost: \$0.03/mile

Operating Cost: \$.13/mile**

Total Ownership Cost: ***

Description:

This vehicle is operated throughout the valley of Phoenix, Arizona by EZ Messenger, a legal document courier business. It is operated five days a week, transferring documents between courts, law offices, and medical facilities on city streets and urban freeways.

See HEVAmerica Baseline Performance Fact Sheet for more information

Operating Performance:

Total miles driven: 79,240

Cumulative MPG: 42.8

Major Operations & Maintenance

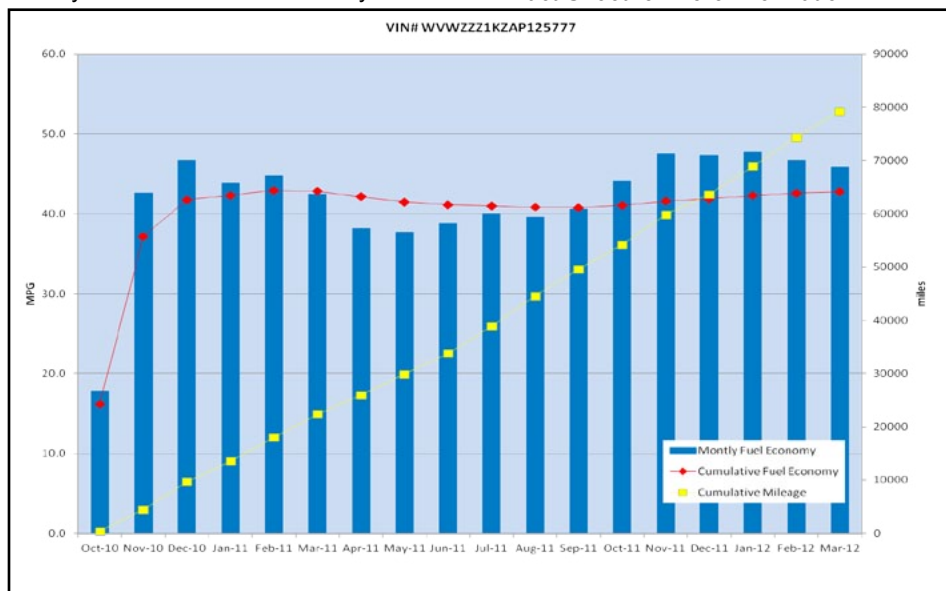
Events:

None

*Purchase includes dealer price with options plus taxes. It does not include title, license, registration, extended warranty or delivery fee costs.

**Operating costs includes insurance, fuel, and registration costs

***This vehicle is not available for normal purchase in the United States so no ownership costs can be calculated



Monthly MPG = (miles driven)/(gallons of fuel purchased). Monthly variation in reported MPG may occur due to the difference in fuel tank level at the beginning and end of the month.