

Economic Indicator Database

- Standardized formats
- Customizable downloads

U.S. Census Bureau

Economic Indicators

Monthly Wholesale Trade: Sales and Inventories CHART
 July 2010 sales of merchant wholesalers were \$350.1 billion, up 0.6 percent (+/-0.5%) from last month. End-of-month inventories were \$405.0 billion, up 1.3 percent (+/-0.4%) from last month.

Current	Previous
1.3 % change in Inv July 2010	0.3 % change in Inv June 2010

U.S. International Trade in Goods and Services CHART
 The Nation's international trade deficit in goods and services decreased to \$42.8 billion in July 2010 from \$49.8 billion in June (revised), as exports increased and imports decreased.

Current	Previous
-42.8 \$ billion July 2010	-49.8 \$ billion June 2010

Quarterly Services Survey CHART
 U.S. Information sector revenue for the second quarter of 2010, adjusted for seasonal variation but not for price changes, was \$290.9 billion, a increase of 0.8 percent (+/- 0.3) from the first quarter of 2010.

Current	Previous
0.8 % change 2nd Qtr 2010	0.9 % change 1st Qtr 2010

Manufacturers' Shipments, Inventories, and Orders CHART
 New orders for manufactured goods in July increased \$0.6 billion or 0.1 percent to \$409.5 billion.

Current	Previous
0.1 % change July 2010	-0.6 % change June 2010

Now Available

- U.S. International Trade
- Manufacturer's Shipments, Inventories, and Orders
- Monthly Retail Trade & Food Services
- Monthly Wholesale Trade
- Quarterly Services Survey
- Construction Spending
- Advance Report for Monthly Retail Trade and Food Services
- New Residential Construction
- New Home Sales
- Manufacturing and Trade Inventories and Sales
- Quarterly Financial Report – Manufacturing, Mining, Trade, and Services
- Quarterly Financial Report – Retail Trade
- Housing Vacancies and Homeownership

U.S. Department of Commerce
United States Census Bureau

People | Business | Geography | Data | Research | Newsroom

You are here: [Census.gov](#) | [Business & Industry](#) | Database Search

Business and Industry

Main | About the Surveys | Data by Geography | Data by Survey | FAQs

Are You in a Survey?

- Is this form legitimate?
- Get help with your form

Data by Sector:

- Economy-Wide
- Construction
- Governments
- International Trade
- Manufacturing
- Retail Trade
- Services
- Wholesale Trade
- Other Sectors

Special Topics:

- Business Dynamics
- Business Expenses
- Concentration
- E-Commerce
- Economic Studies
- Historical Data

DATABASE SEARCH [Brochure - learn more about it](#) 417KB

Please follow the numbers in order.

- Select the report/survey from which you wish to retrieve data:
- Select a date range:
 Start: End:
- Select Industry or Category:
- Select one Item:
- Select Geographical Level:

Select as available:
 Seasonally Adjusted
 Not Seasonally Adjusted
 Show Estimates of Sampling Variability

Choose from a list of available reports

Select a desired date range

Choose a specific industry/category

Select the data value that you want to observe

Select a geographic level

Option to save your search criteria to your favorites menu

Please send comments to sssd.econ.data@census.gov

You are here: Census.gov > [Business & Industry](#) > Database Search

Business and Industry

- Main
- About the Surveys
- Data by Geography
- Data by Survey
- FAQs

Are You in a Survey?

- Is this form legitimate?
- Get help with your form

Data by Sector:

- Economy-Wide
- Construction
- Governments
- International Trade
- Manufacturing
- Retail Trade
- Services
- Wholesale Trade
- Other Sectors

Source: U.S. International Trade in Goods and Services ([Definitions](#))

Balance of Payment Goods and Services — Seasonally Adjusted Balance [Millions of Dollars]

[TXT](#) [XLS-V](#) [XLS-H](#) [Bar Chart](#) [Line Chart](#)

Year	Jan	Feb	Mar	Apr	May	Jun	Jul	Aug	Sep	Oct	Nov	Dec
2000	-27,418	-30,340	-31,632	-29,060	-29,994	-31,178	-31,791	-30,256	-34,221	-33,726	-33,097	-34,036
2001	-35,076	-29,335	-32,598	-31,315	-27,776	-29,380	-30,086	-28,239	-30,844	-30,724	-29,612	-26,786
2002	-29,312	-32,105	-30,790	-33,571	-33,934	-35,011	-33,932	-35,834	-36,509	-34,657	-38,931	-42,845
2003	-40,653	-39,188	-43,272	-41,990	-40,739	-39,616	-41,044	-39,453	-41,308	-40,801	-39,329	-43,594
2004	-44,216	-43,963	-46,161	-46,873	-47,803	-54,432	-50,957	-52,868	-50,997	-54,583	-58,374	-54,130
2005	-55,397	-57,255	-52,125	-56,796	-55,835	-57,733	-57,546	-57,838	-64,192	-66,428	-63,381	-63,800
2006	-66,671	-62,120	-61,569	-61,949	-64,003	-62,798	-66,007	-67,351	-64,311	-58,139	-57,618	-60,749
2007	-57,124	-58,172	-61,399	-59,818	-58,812	-59,097	-59,043	-56,109	-56,808	-55,600	-58,640	-56,105
2008	-60,040	-63,259	-59,236	-62,641	-61,277	-59,928	-65,743	-60,900	-59,491	-59,541	-44,156	-42,126
2009	-37,201	-27,034	-28,579	29,172	-25,524	-26,690	-33,378	-31,025	-34,890	-32,797	-36,293	-38,690
2010	-37,490	-41,011	-41,142	-41,466	-42,166	-46,890	-41,564	-45,536	-44,013	-39,452	-38,842	-40,454

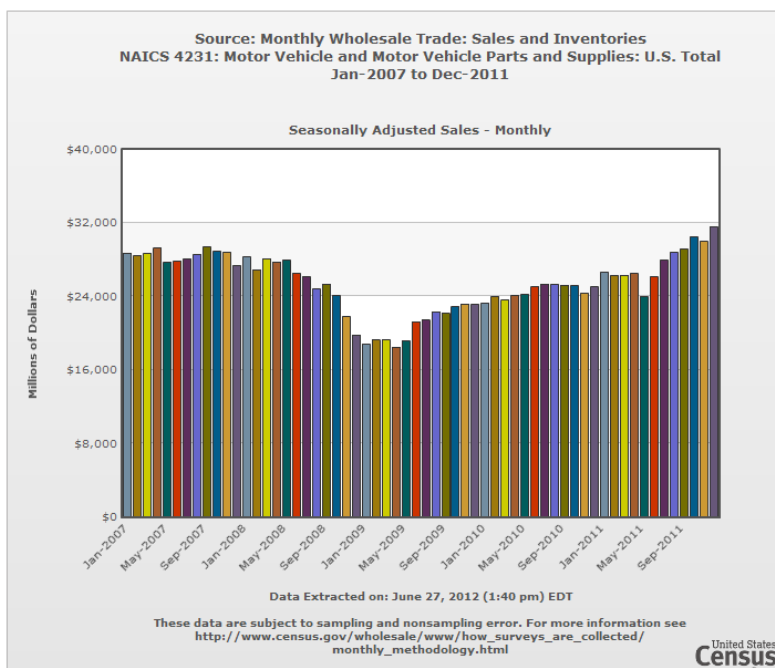
Period	Value
Jan-2000	-27,515
Feb-2000	-30,428
Mar-2000	-31,843
Apr-2000	-29,209
May-2000	-30,137
Jun-2000	-31,325
Jul-2000	-32,037
Aug-2000	-30,461
Sep-2000	-34,398
Oct-2000	-33,971
Nov-2000	-33,356
Dec-2000	-34,100
Jan-2001	-35,238
Feb-2001	-29,498
Mar-2001	-32,853
Apr-2001	-31,482
May-2001	-27,945
Jun-2001	-29,608
Jul-2001	-30,346
Aug-2001	-28,508
Sep-2001	-31,058
Oct-2001	-31,019
Nov-2001	-29,860
Dec-2001	-26,976
Jan-2002	-29,657
Feb-2002	-32,283

Year	Jan	Feb	Mar	Apr	May	Jun	Jul	Aug	Sep	Oct	Nov	Dec
2000	-27,515	-30,428	-31,843	-29,209	-30,137	-31,325	-32,037	-30,461	-34,398	-33,971	-33,356	-34,100
2001	-35,238	-29,498	-32,853	-31,482	-27,945	-29,608	-30,346	-28,508	-31,058	-31,019	-29,860	-26,976
2002	-29,657	-32,283	-30,936	-33,833	-34,122	-35,213	-34,214	-36,126	-36,841	-35,023	-39,224	-43,057
2003	-40,887	-39,400	-43,560	-42,213	-40,957	-39,874	-41,330	-39,733	-41,628	-41,077	-39,637	-43,892
2004	-44,566	-44,193	-46,410	-47,178	-48,082	-54,751	-51,244	-53,193	-51,329	-55,055	-58,835	-54,512
2005	-55,778	-57,642	-52,928	-57,205	-56,210	-58,162	-57,998	-58,310	-64,643	-67,156	-63,957	-64,189
2006	-66,901	-62,401	-62,107	-62,688	-64,780	-63,470	-66,493	-67,680	-64,625	-58,705	-58,218	-61,172
2007	-57,433	-58,202	-61,500	-60,237	-59,343	-59,583	-59,424	-56,443	-57,268	-56,409	-59,512	-56,745
2008	-59,923	-62,655	-58,898	-62,973	-61,175	-61,295	-66,401	-61,449	-59,770	-59,442	-43,804	-41,016
2009	-36,067	-26,362	-28,009	-28,445	-24,855	-27,139	-33,086	-31,072	-35,164	-32,302	-35,273	-37,132
2010	-34,840	-39,912	-39,699	-40,045	-41,794	-49,762	-42,775	NA	NA	NA	NA	NA

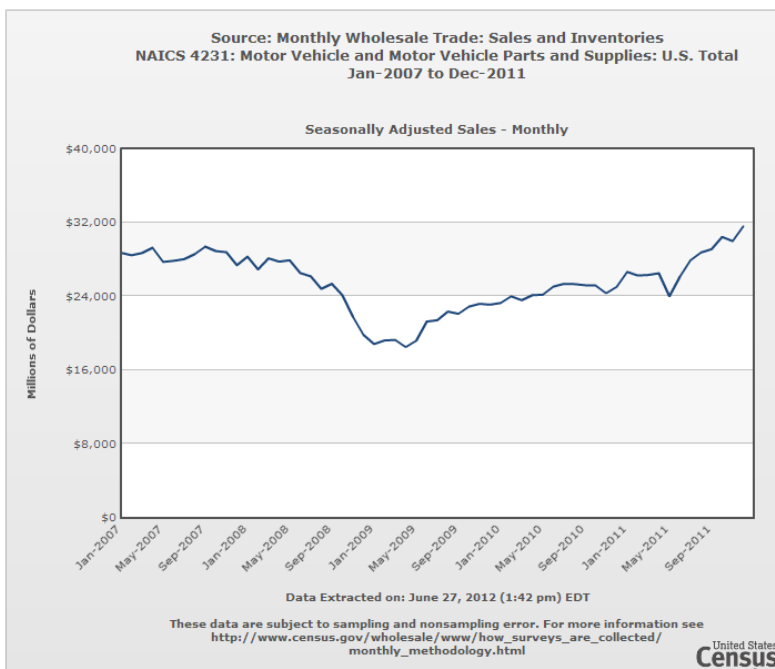
- Download data straight from the website to Excel.
- Format vertically or horizontally.

For more information on the Economic Indicators, see <http://www.census.gov/cgi-bin/briefroom/BriefRm>

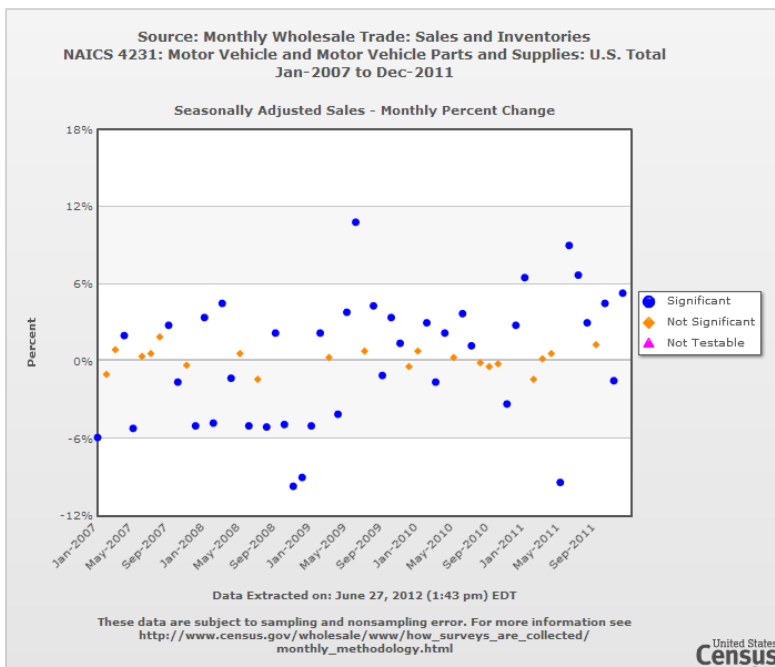
Now available: Create bar or line charts when observing data representing total values. Also, create scatter charts when observing data representing percentage change (where applicable).



Bar Charts
available for Totals
and CV/RSE



Line Charts
available for Totals



Scatter Charts
available for
Change
Estimates

Chart Option Availability by Indicator Program

All charts can be saved as images (.jpg, .pdf, and .png Files)
 Charts are NOT embeddable as HTML objects

Survey	Bar Charts/ Line Charts	Scatter Charts	Options for Seasonally Adjusted Data*	Confidence Intervals**
US International Trade	Yes	No	Yes	N/A
Housing Vacancies and Homeownership	Yes	No	Yes	Yes
Manufacturers' Shipments, Inventories, and Orders	Yes	Yes	Yes	No
Advance Monthly Sales for Retail and Food Services	Yes	Yes	Yes	Yes
Monthly Retail Trade and Food Services	Yes	Yes	Yes	Yes
Manufacturing and Trade Inventories and Sales	Yes	Yes	Yes	Yes
Monthly Wholesale Trade: Sales and Inventories	Yes	Yes	Yes	Yes
Quarterly Financial Report***	Bar Charts only	No	No	Yes
Quarterly Services Survey	Yes	Yes	Yes	Yes
New Residential Construction	Yes	No	Yes	Yes
New Home Sales	Yes	No	Yes	Yes
Construction Spending	Yes	Yes	Yes	Yes

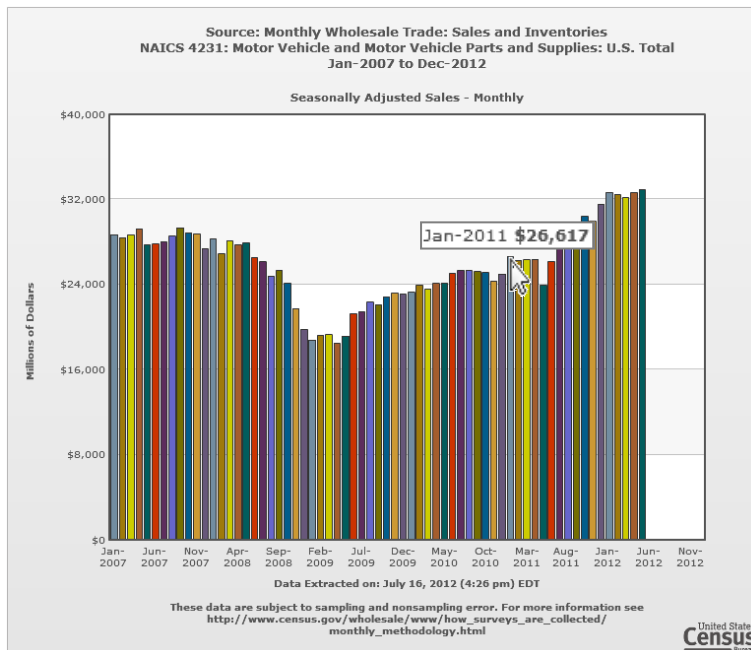
*Values may be adjusted for seasonal variation, and holiday and trading-day differences (where applicable), but are not adjusted for price changes.

**The 90% Confidence Limits are displayed on graphs when estimates of sampling variability are available and requested.

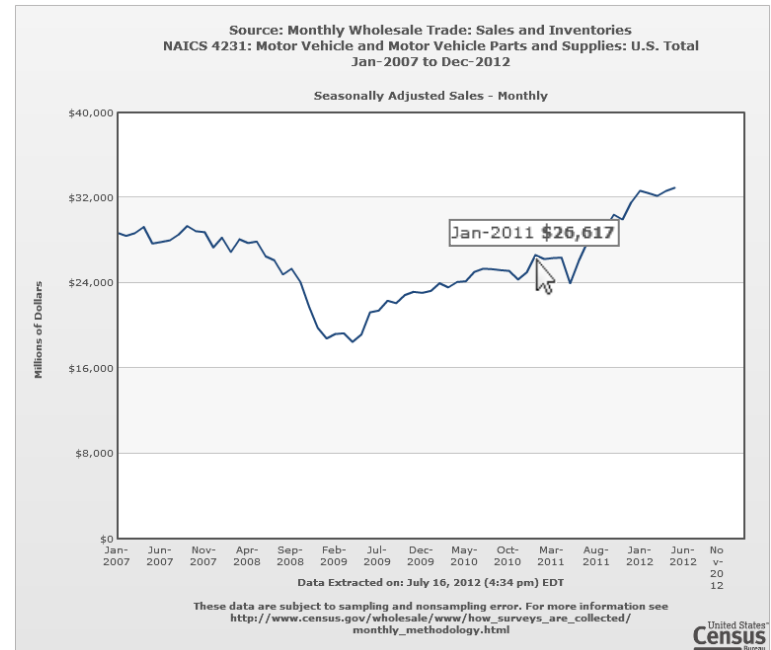
***Line charts will be available for QFR after the 1st Quarter 2014 data are released to the Economic Indicator Database. Sixteen or more statistical periods of estimates must be available to produce a line chart.

Technical Documentation for Charts

Total Estimates – Line Charts and Bar Charts



(Bar Chart without Error Bars)



(Line Chart without Error Bars)

Chart Layout

TITLE

- Source: Selected report/survey (#1 in Database Search)
- Industry or Category (#3 in Database Search)
- Geographic level (#5 in Database Search)
- Date Range in years/quarters (#2 in Database Search)
- Item (#4 in Database Search) and Seasonal Adjustment (if available and selected)

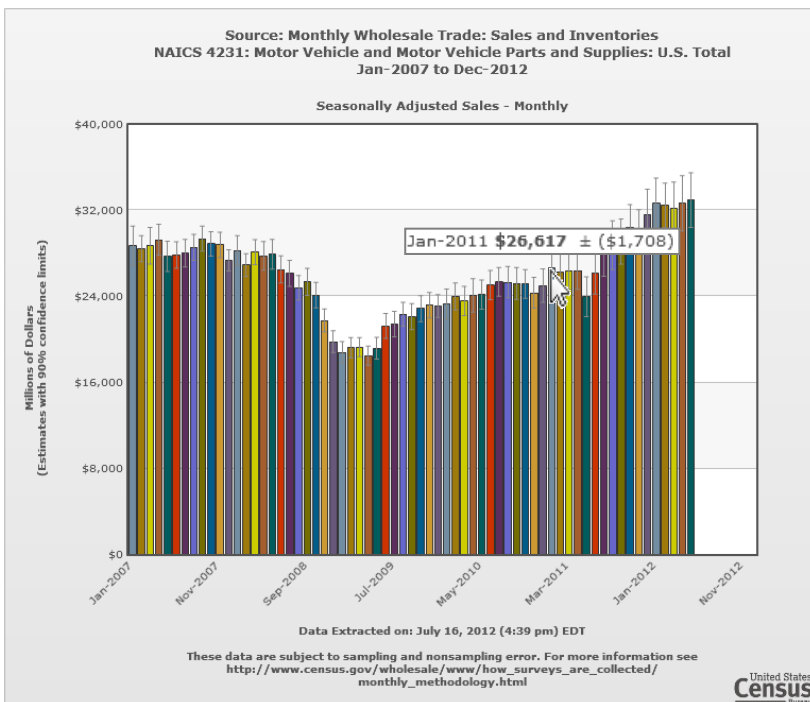
X-AXIS

- Starts with first month/quarter of selected date range
- Ends with last month/quarter of selected date range
 - When selecting data through the current year, any months/quarters where data has not yet been collected will display as empty spaces at the end of the chart.
 - Data can be viewed over long ranges of time, but for best clarity try to restrict your date range selection to no more than 8 years for monthly surveys, and 26 years for quarterly surveys.
- Date/time stamp of data extraction provided as footnote
- Source and accuracy statements provided as footnotes, with program-specific links

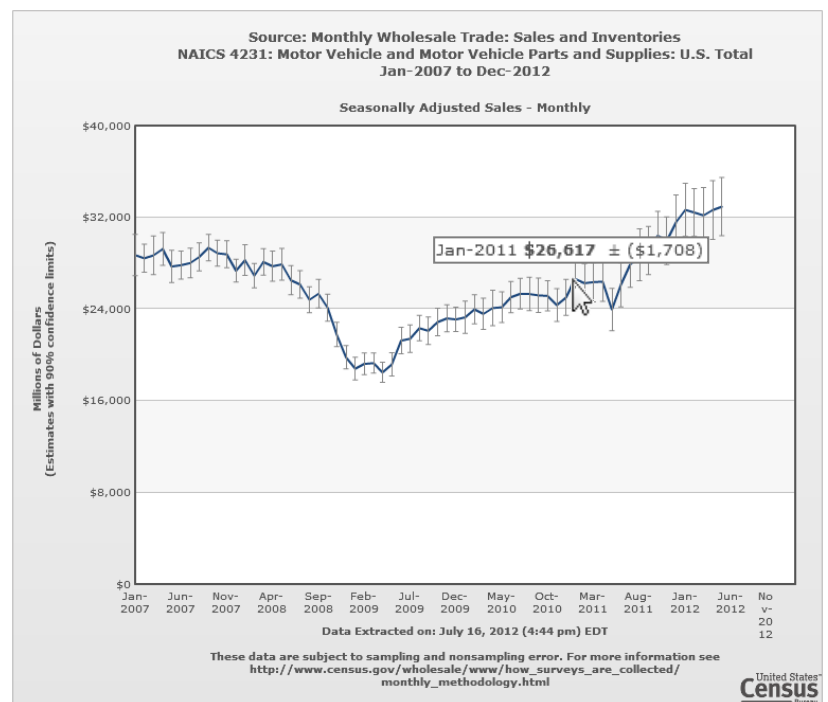
Y-AXIS

- Axis label provides information on units of measure. For example, \$26,617 in millions represents \$26,617,000,000.
- Axis label indicates whether chart includes 90% confidence limits (error bars)

Total Estimates – Line Charts and Bar Charts



(Bar Chart with Error Bars)



(Line Chart with Error Bars)

ERROR BARS (90% CONFIDENCE INTERVALS)

- Included on bar or line chart for totals when Database Search selects “Show estimates of Sampling Variability”*
 - Not available for line charts displaying CV/RSE data.
- Error bars are computed as
 - Lower error bar endpoint (lower confidence interval limit) = Total - 1.645 x (Total x CV/RSE)
 - Upper error bar endpoint (upper confidence interval limit) = Total + 1.645 x (Total x CV/RSE)
 - Margin of error = 1.645 x (Total x CV/RSE)

Note: The 90% confidence intervals (error bars) displayed on the charts are obtained under standard normality assumptions and may be rounded to the nearest unit. Consequently, they may differ somewhat from the program's published margins of error, which make use of survey design and estimation procedures and may employ finer degrees of precision in their reporting.

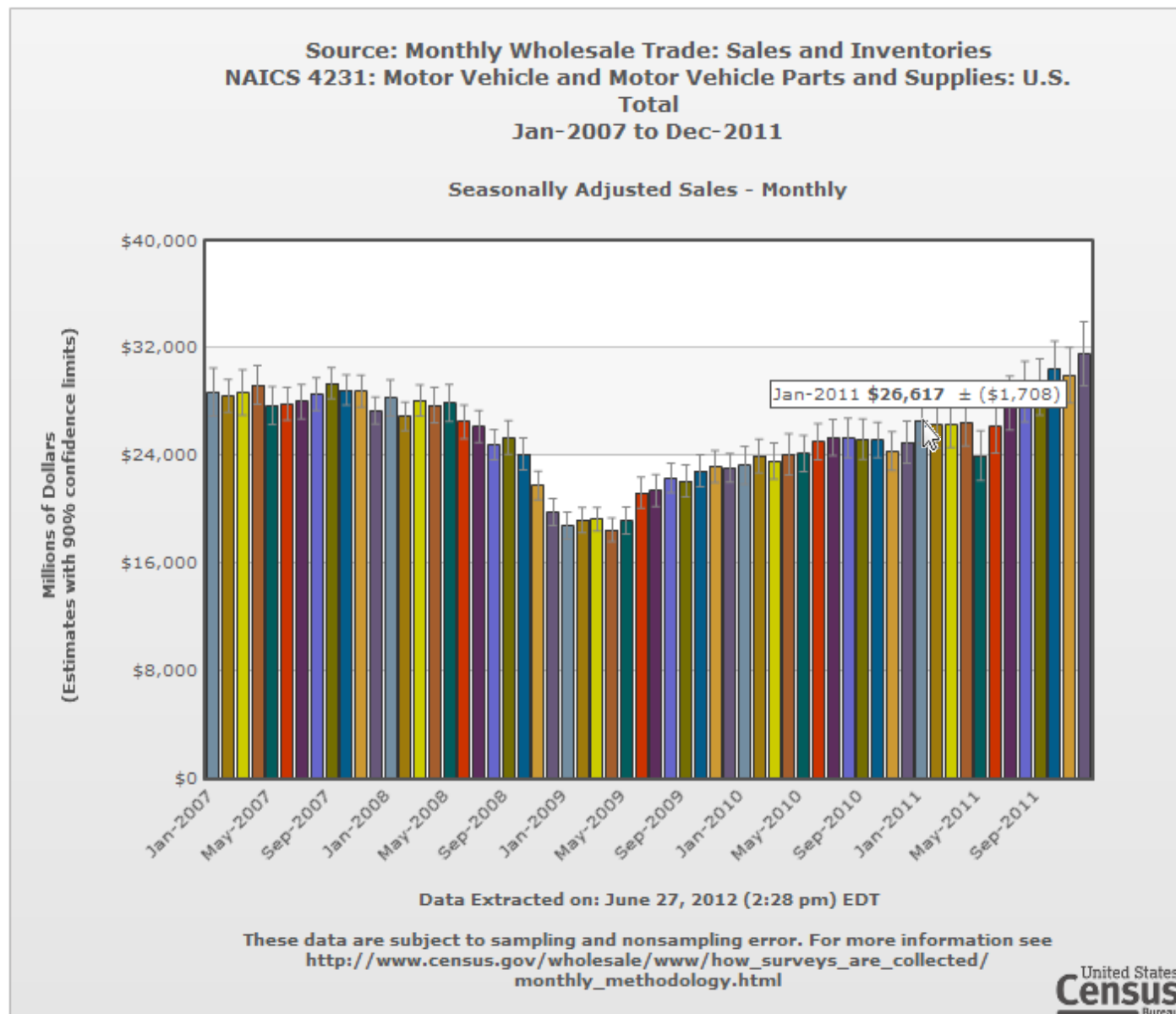
- Every chart will produce the entire requested time series, even when estimates of sampling variability are not available. In this case, there will be no error bars associated with the corresponding data value for bar or line charts.

ANNOTATIONS/FLYOVERS

- Flyover annotations display time period and data value for all points on the chart.
- In addition, flyover annotations for charts with error bars will also display the Margin of Error for the 90% Confidence Interval. (For example, if the flyover displays “420 ± (50)”, then the Margin of Error would be 50, and the 90% Confidence Interval would be (370, 470).
- Flyover annotations of the error bars will display the absolute value of the Margin of Error.

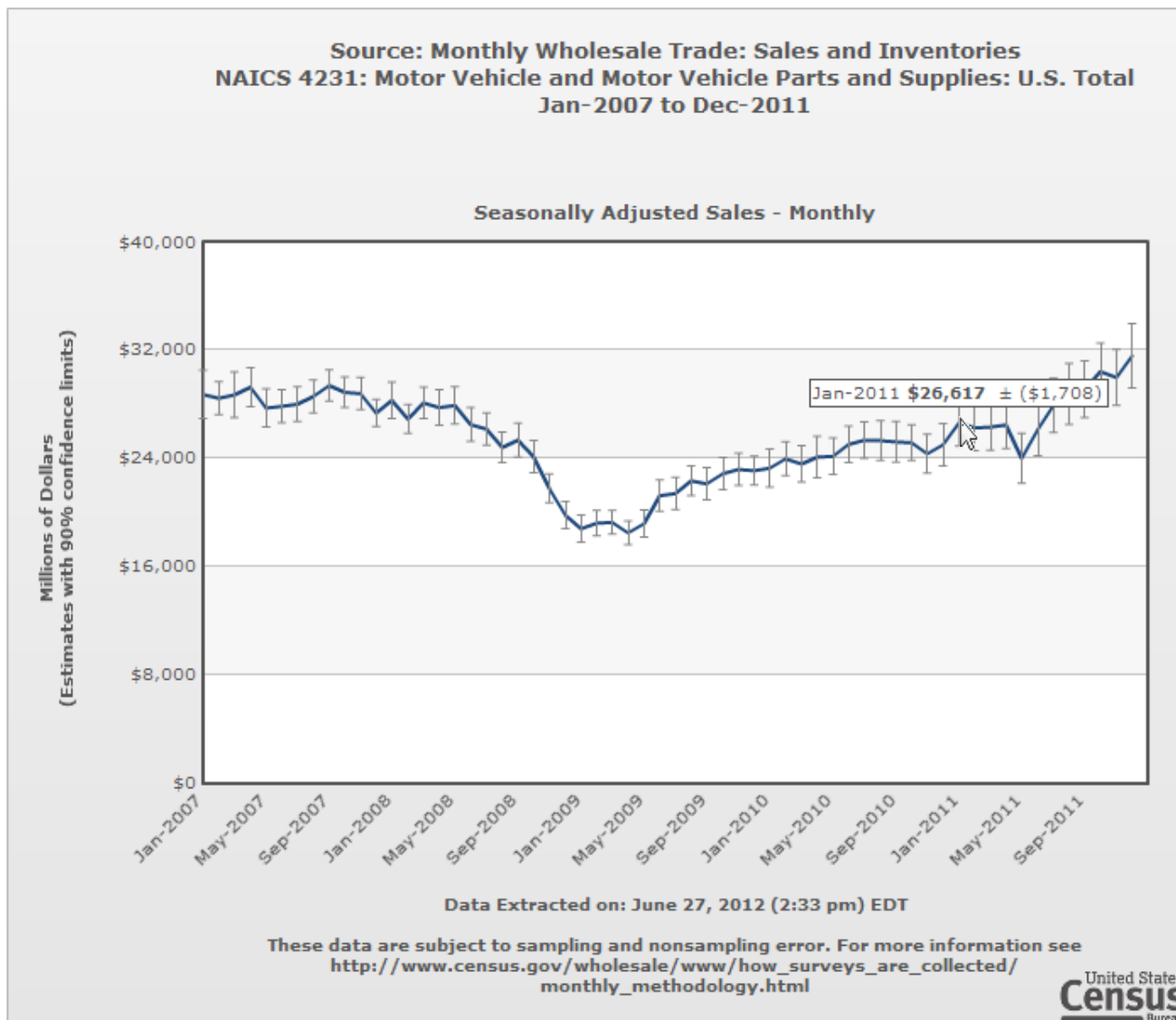
* CVs (coefficients of variation) and RSEs (relative standard errors), are provided as measures of variability for totals instead of standard errors. The CV/RSE = standard error / estimate.

Total Estimates and CV/RSE – Bar Charts



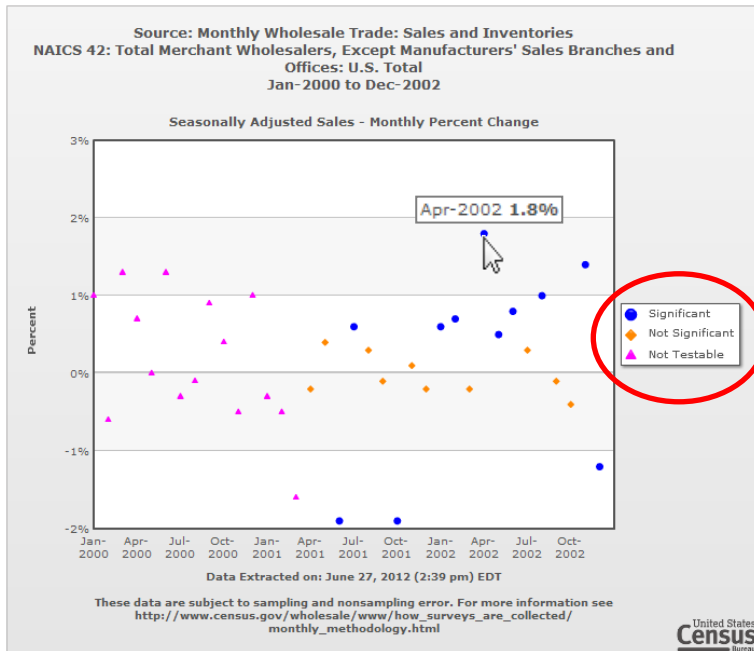
- Each month/quarter is represented by the same color when viewing data spanning multiple years.
- If Seasonally Adjusted data are chosen, this will be noted in the subtitle. These data are adjusted for seasonal variation, and holiday and trading-day differences (where applicable), but are not adjusted for price changes.
- Data can be viewed over long ranges of time, but for best clarity try to restrict your date range selection to no more than 8 years for monthly surveys, and 26 years for quarterly surveys.
- Error bars are NOT available for CV/RSE data.
- Note that when viewing seasonally vs. non-seasonally adjusted data over the same time frame, the y-axis min and max may be different for the two charts.

Total Estimates – Line Charts

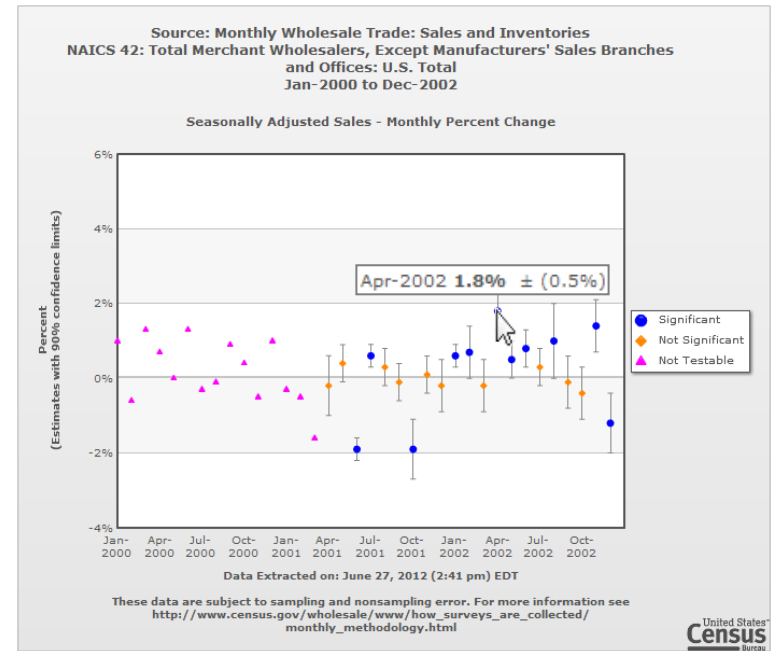


- If Seasonally Adjusted data are chosen, this will be noted in the subtitle. These data are adjusted for seasonal variation, and holiday and trading-day differences (where applicable), but are not adjusted for price changes.
- Data can be viewed over long ranges of time, but for best clarity try to restrict your date range selection to no more than 8 years for monthly surveys, and 26 years for quarterly surveys.
- You must select a date range with a minimum of 4 years.
- Line chart for totals is continuous, but error bars are provided at discrete locations corresponding to the applicable statistical period (confidence bands are not appropriate for these data)
- Note that when viewing seasonally vs. non-seasonally adjusted data over the same time frame, the y-axis min and max may be different for the two charts.

Percentage Change – Scatter Charts



(Scatter Chart without Error Bars)



(Scatter Chart with Error Bars)

Chart Layout

TITLE

- Source: Selected report/survey (#1 in Database Search)
- Industry or Category (#3 in Database Search)
- Geographic level (#5 in Database Search)
- Date Range in years/quarters (#2 in Database Search)
- Item (#4 in Database Search) and Seasonal Adjustment (if available and selected)

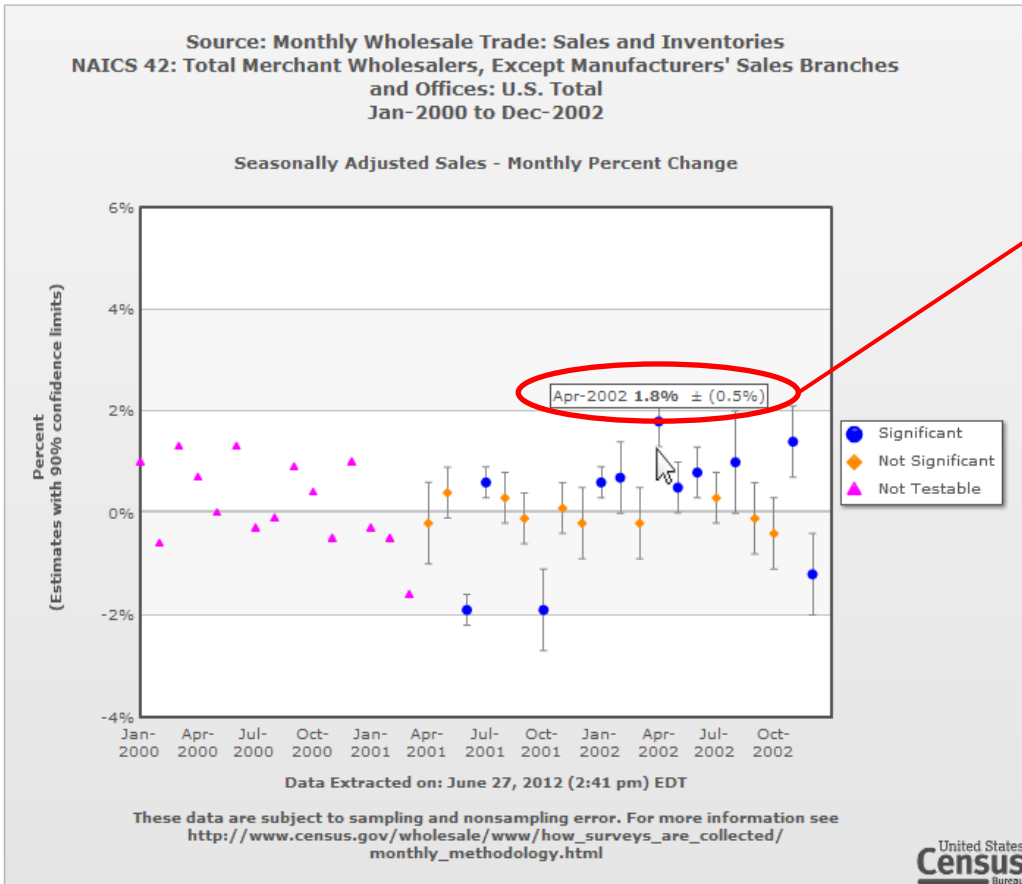
X-AXIS

- Starts with first month/quarter of selected date range
- Ends with last month/quarter of selected date range
 - When selecting data through the current year, any months/quarters where data has not yet been collected will display as empty spaces at the end of the chart.
 - Data can be viewed over long ranges of time, but for best clarity try to restrict your date range selection to no more than 8 years for monthly surveys, and 26 years for quarterly surveys.
- Date/time stamp of data extraction provided as footnote
- Source and accuracy statements provided as footnotes, with program-specific links

Y-AXIS

- Axis label is displayed as a percentage.
- Axis label indicates whether chart includes 90% confidence limits (error bars)
- Note that when viewing seasonally vs. not seasonally adjusted data over the same time frame, the y-axis min and max may be different for the two charts.

Percentage Change – Scatter Charts



ANNOTATIONS/FLYOVERS

Apr-2002 1.8% ± (0.5%)

- Flyover annotations display time period and data value for all points on the chart.
- In addition, flyover annotations for charts with error bars will also display the Margin of Error for the 90% Confidence Interval. (In the example above, the Margin of Error would be 0.5%, and the 90% Confidence Interval would be (1.3%, 2.3%).)
- Flyover annotations of the error bars will display the absolute value of the Margin of Error.

ERROR BARS (90% CONFIDENCE INTERVALS)

- Included on scatter chart for percentage change when Database Search selects “Show estimates of Sampling Variability”*
 - Not available for line charts displaying CV/RSE data
- Error bars are computed as
 - Lower error bar endpoint (lower confidence interval limit) = Estimate - 1.645 x standard error
 - Upper error bar endpoint (upper confidence interval limit) = Estimate + 1.645 x standard error
 - Margin of error = 1.645 x standard error

Note: The 90% confidence intervals used to determine whether a change estimate is significantly different from zero are obtained under standard normality assumptions. Program tests make use of survey design and estimation procedures in determining critical values. Consequently, it is possible that the chart results may differ from those presented in the press release.
- Every chart will produce the entire requested time series, even when estimates of sampling variability are not available. In this case, there will be no error bars associated with the corresponding data value for bar or line charts.

Rules for Determining the Significance of Percentage Change Estimates in Graphs

Color	Definition	Rule
Blue	Significant	CONFIDENCE INTERVAL/LIMIT DOES NOT INCLUDE ZERO $0 < (\text{Estimate} - 1.645 \times \text{standard error})$ or $0 > (\text{Estimate} + 1.645 \times \text{standard error})$
Orange	Not Significant	CONFIDENCE INTERVAL/LIMIT INCLUDES ZERO $(\text{Estimate} - 1.645 \times \text{standard error}) < 0 < (\text{Estimate} + 1.645 \times \text{standard error})$
Pink	Not Testable	Standard errors are not provided/available