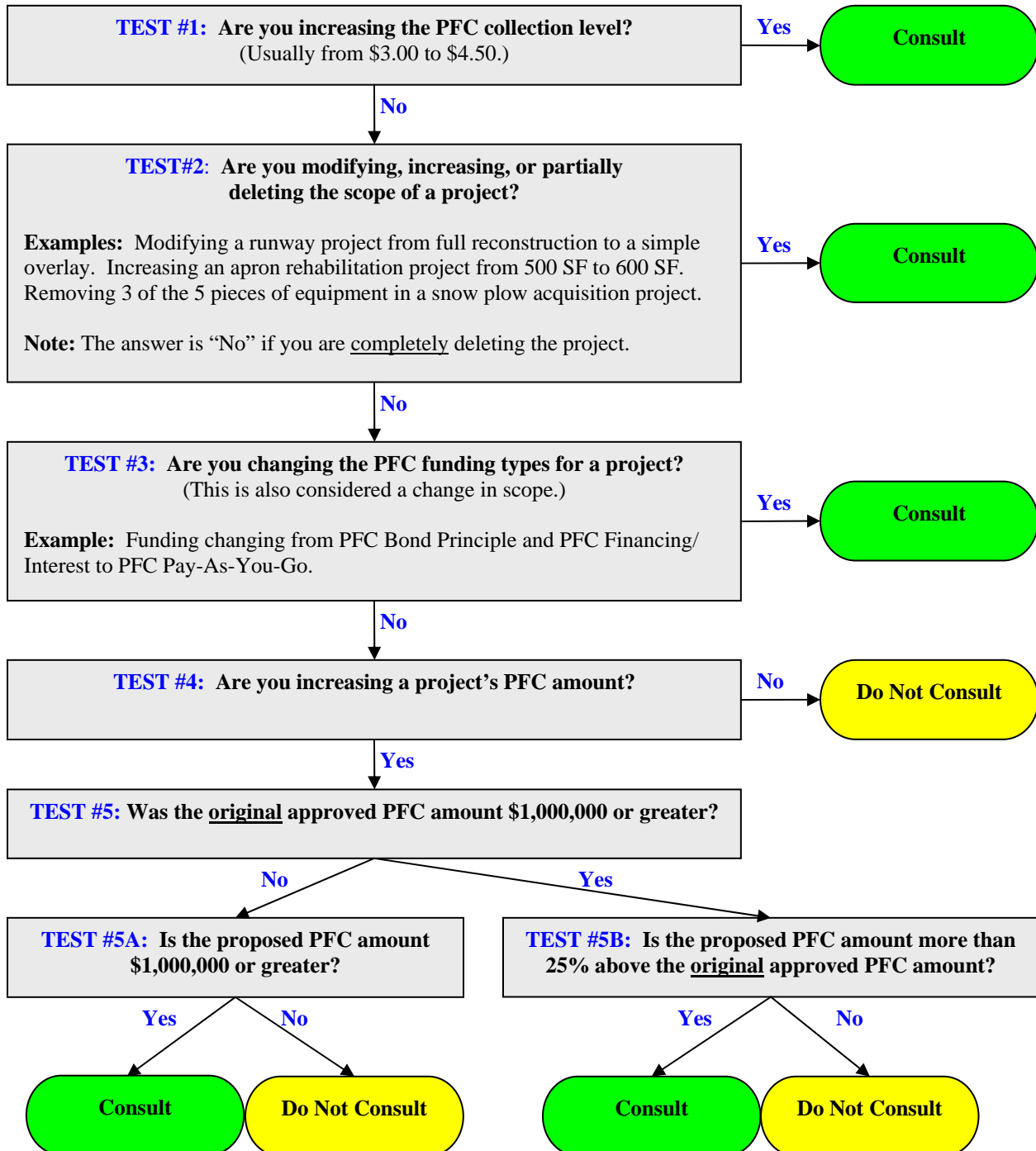


Passenger Facility Charge (PFC) Amendments – When to Consult

The PFC program has had some significant changes since it's inception in 1991. One of the more significant changes involves the consultation rules for amendments. The following flowchart provides the current consultation rules public agencies must use for amendments. **Please submit drafts!!!!**



Where Can I Learn More? The latest PFC statutes, rulemakings, order, policies, forms, and instructions can be found at: www.faa.gov/airports/pfc.