



Department of Health & Human Services
Office of the National Coordinator for
Health Information Technology

Regional Extension Centers

Working to Assist Providers to Achieve Meaningful Use of Electronic Health Record Systems

Mat Kendall

**Director Office of Provider Adoption Support (OPAS)
Office of the National Coordinator for Health
Information Technology (ONC)**

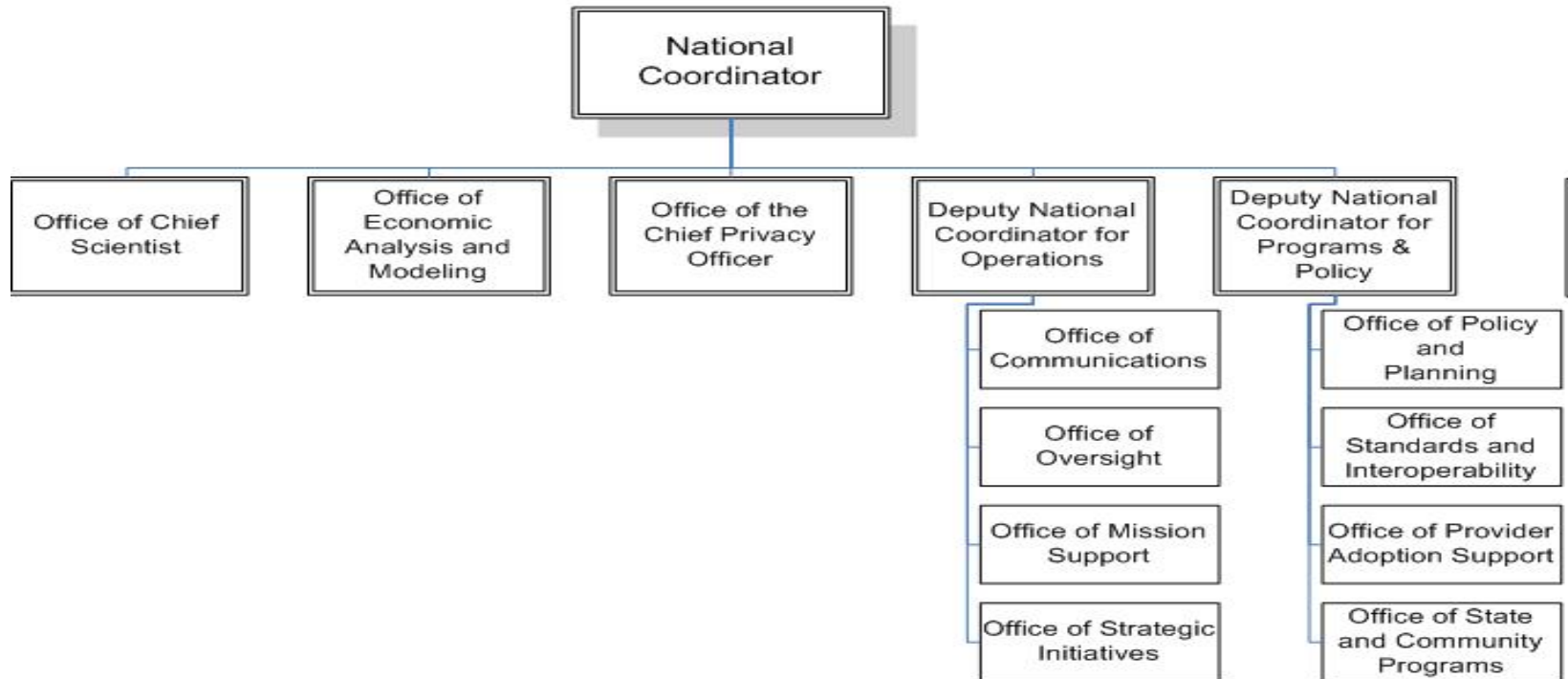
Mat.kendall@hhs.gov

Office of the National Coordinator for Health IT (ONC)

- Resource for the entire U.S. health system
- Supports and coordinates efforts to improve health care through:
 - Adoption of health information technology (HIT)
 - Nationwide health information exchange (HIE)
- Created in 2004, then mandated in 2009 in the Health Information Technology for Economic and Clinical Health (HITECH) Act

ONC Organization

Office of the National Coordinator for Health Information Technology Organizational Chart



Last updated: February 22, 2010

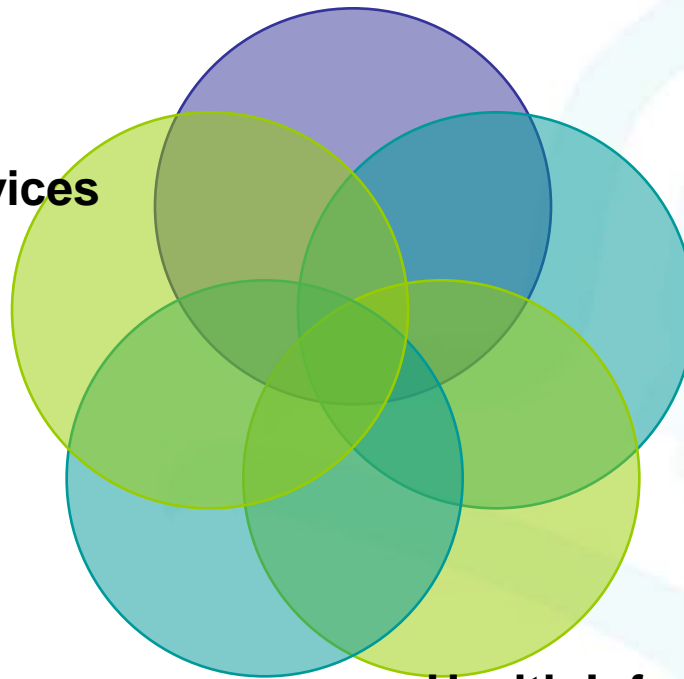
Office of Provider Adoption Support (OPAS)

Goal: Assist All Providers to Achieve Meaningful Use of EHR Systems

**Regional Extension Centers (REC)
Project Office**

Provider Adoption Services

Meaningful Use



Community College Workforce

**Health Information Technology
Research Center (HITRC)**

Why Providers Should Implement EHRs?

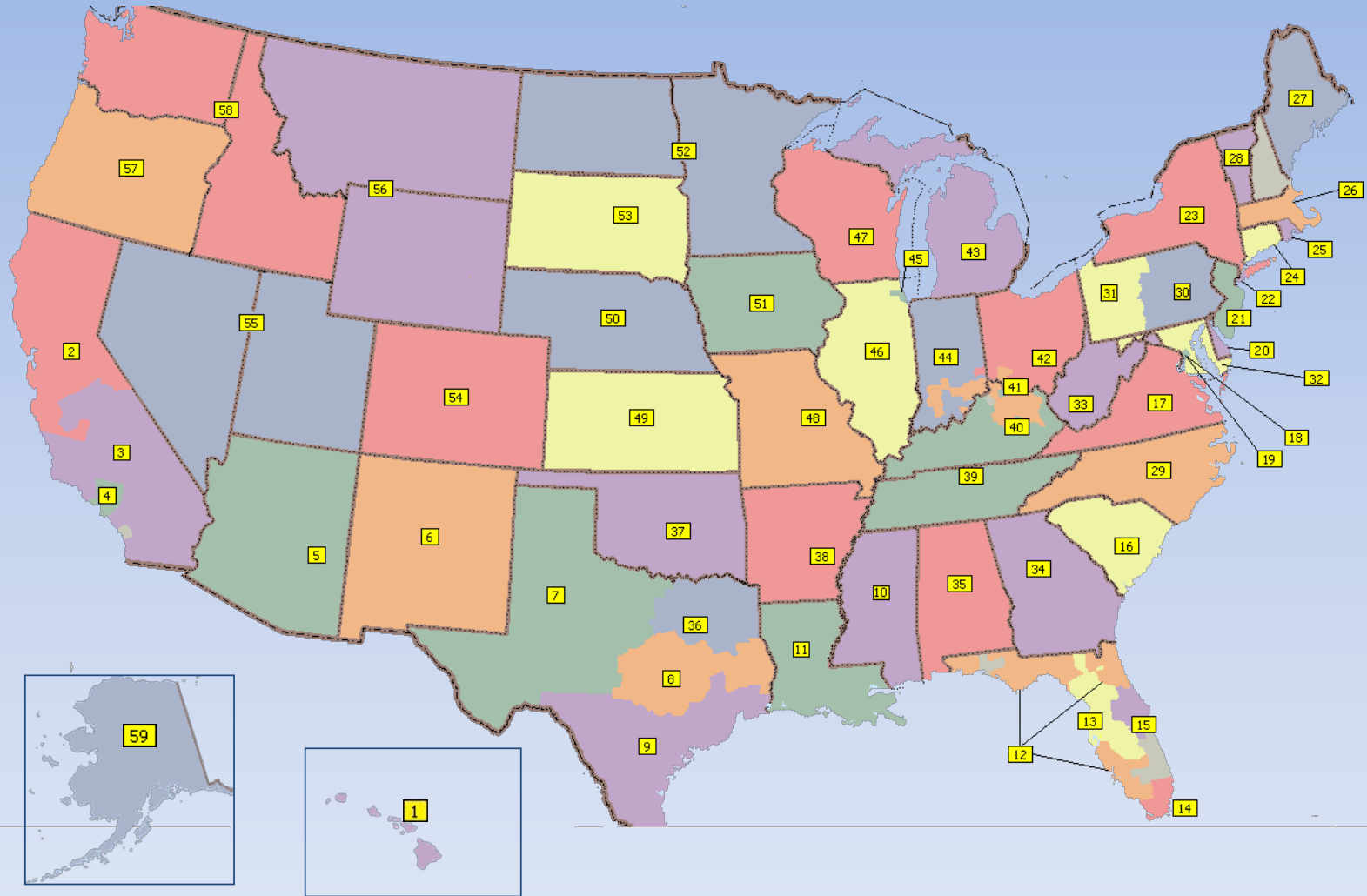
- EHRs that are implemented properly can improve the quality and efficiency of care that is delivered
- Providers that achieve meaningful use can receive between \$44,000 and \$63,000 through the EHR Incentive Program
- Many private plans are now aligning their existing quality improvement programs around meaningful use
- Health care reform programs, such as Accountable Care Organizations (ACOs) will rely on data from EHR systems
- EHRs can assist with reporting grant requirements

Regional Extension Centers (RECs)

- **Goal:** Assist at least 100,000 primary care providers in achieving Meaningful Use by 2012
- **Approach:**
 - Currently 60 RECs covering 98% of the USA
 - \$644 Million funded via 4-year Cooperative Agreements
- **While REC are encourage to work with all providers they will initially focus on “Priority Settings” Such as:**
 - Individual and small group practices focused on primary care (10 or fewer care providers)
 - Public and Critical Access Hospitals
 - Community Health Centers and Rural Health Clinics

Current RECs

United States Regional Extension Centers



*Note: applicable regions across the nation may also be supported by the Indian Health Board Regional Extension Center, headquartered in Washington DC.

REC Map Legend

ID	Organization	Cohort
1	Hawaii Health Information Exchange	2
2	Northern California Regional Extension Center	1
3	Southern California Regional Extension Center	1
4	Local Initiative Health Authority for Los Angeles County	2
5	Arizona Health-eConnection	2
6	Lovelace Clinic	1
7	Texas Tech University Health Sciences Center	2
8	The TAMUS Health Science Center Research Foundation	2
9	Univ. of Texas Health Sciences Center at Houston	2
10	eQHealth Solutions, Inc.	2
11	Louisiana Health Care Quality Forum	2
12	Community Health Centers Alliance, Inc	2
13	University of South Florida-- USF Health	2
14	Health Choice Network, Inc.	1
15	UCF College of Medicine	2
16	South Carolina Research Foundation	2
17	VHQC and the Center for Innovative Technology, for The Virginia Consortium	1
18	National Indian Health Board	2
19	District of Columbia Primary Care Association (DCPCA)	1
20	Quality Insights of Delaware	2
21	NJ Institute of Technology	2
22	Fund for Public Health NY	1
23	New York eHealth Collaborative (NYeC)	1
24	eHealth Connecticut Inc.	2
25	Rhode Island Quality Institute	1
26	Massachusetts Technology Collaborative	1
27	HealthInfoNet	2
28	Vermont Information Technology Leaders	1

ID	Organization	Cohort
29	North Carolina Area Health Education Centers Program	1
30	Quality Insights of Pennsylvania (Eastern)	2
31	Quality Insights of Pennsylvania (Western)	2
32	Chesapeake Regional Information For Our Patients	2
33	West Virginia Health Improvement Institute, Inc.	1
34	National Center for Primary Care, Morehouse School of Medicine	1
35	University of South Alabama Center for Strategic Health Innovation	2
36	Dallas- Fort Worth Hospital Council Education and Research Foundation	2
37	Oklahoma Foundation for Medical Quality	1
38	Arkansas Foundation For Medical Care	1
39	Qsource (TN)	1
40	University of Kentucky/UK HealthCare	2
41	Greater Cincinnati HealthBridge	1
42	Ohio Health Information Partnership (OHIP)	1
43	Altarum Institute	1
44	Purdue University	1
45	Northwestern University	1
46	Northern Illinois University	1
47	MetaStar, Inc.	1
48	The Curators of the University of Missouri	2
49	Kansas Foundation for Medical Care, Inc.	1
50	CIMRO of Nebraska	1
51	Iowa IFMC	1
52	Key Health Alliance (Stratis Health)	1
53	South Dakota HIT Regional Extension Center	2
54	Colorado RHIO	1
55	HealthInsight	1
56	Mountain-Pacific Quality Health Foundation	2
57	OCHIN, Inc.	1
58	Qualis Health	1
59	Alaska eHealth Network	2

RECs: Services for Providers

- **RECs support providers in adopting and becoming Meaningful Users of HIT through comprehensive services:**
 - EHR vendor selection and implementation support
 - Project management assistance
 - Workflow redesign
 - Collaborating with educational institutions to increase workforce capacity
- **ONC is also developing strategies to support priority settings (example, rural health) through Communities of Practice**
- **Each REC will provide services/supports designed to meet the needs of the providers in its service area.**

An Example of an REC: The Chicago Health Information Technology Regional Extension Center (CHITREC)

The Chicago Health Information Technology Regional Extension Center (CHITREC) is a public-private partnership that brings together leading healthcare and information technology experts from health care organizations, academia, industry, and government and is focused on providing resources to promote Meaningful Use of Health Information Technology.



CHITREC Mission and Vision

Mission

To improve health care in Chicago through the adoption and use of advanced information technology

Vision

Effectively apply health information technology to:

- Improve the quality, safety and efficiency of health care
- Reduce health disparities
- Engage patients and families
- Improve care coordination
- Improve population and public health
- Ensure adequate privacy and security protections for personal health information

Service Area Profile

Total # PPCPs: 2042

Total # PCPs: 2432

Total # Providers:
6254

GOAL

To help 1486 providers achieve meaningful use of EHR systems by 2012, and 1653 providers by 2014

CHITREC Activities & Events

- **Recent Activities & Events**
 - Are actively signing up Community Health Centers, FQHCs, and small practices
 - Developing a vendor EHR survey
 - Developing Usability Center
- **Upcoming Activities & Events**
 - Will develop local networks of provider EHR user groups
 - Planning coffee house discussions with providers
 - CHITREC is hosting a fall provider workshop
 - Developing tools to assist with workflow redesign

Why should providers work with an REC?

- Adoption and EHR System isn't easy and providers often don't have necessary resources
- RECs can provide use economies of scale to ensure that practices get the support/attention they need from vendors
- RECs are partnering with hospitals and other programs in your area to maximize the support you receive

For More Information About the REC in your area:

Visit the ONC Web site: healthit.hhs.gov

The screenshot shows a Microsoft Internet Explorer browser window displaying the Health Information Technology (HIT) Programs page. The browser's address bar shows the URL: http://healthit.hhs.gov/portal/server.pt?open=512&objID=1487&parentname=CommunityPage&parentid=1&mode=2&in_hi_userid=10741&cached=true. The page features a blue header with the text "Health Information Technology For the Future of Health Care" and a search bar. A left sidebar contains a navigation menu with items such as "Health IT Home", "HITECH & Funding Opportunities", "HITECH Programs", "State Health Information Exchange Program", "HIT Extension Program", "Strategic Health IT Advanced Research Projects Program", "Community College Consortia to Educate Health IT Professionals", "Curriculum Development Centers Program", "Program of Assistance for University-Based Training", "Competency Examination Program", "Federal Advisory Committees", "Regulations & Guidance", "ONC Initiatives", "Outreach, Events, & Resources", "About ONC", "Health IT Buzz Blog", and "Federal Advisory Committee Blog". The main content area is titled "HITECH Programs" and includes an introductory paragraph about the HITECH Act, followed by detailed descriptions of several programs: "State Health Information Exchange Cooperative Agreement Program", "Health Information Technology Extension Program", "Strategic Health IT Advanced Research Projects (SHARP) Program", "Community College Consortia to Educate Health Information Technology Professionals Program", "Curriculum Development Centers Program", "Program of Assistance for University-Based Training", and "Competency Examination for Individuals Completing Non-Degree Training Program". A right sidebar contains a "SPOTLIGHT" section with links to "HITECH Programs", "Certification NPRM", "Privacy & Security", "Standards and Certification IEF", "Meaningful Use", "HIT Policy Committee", and "HIT Standards Committee". Below this is an "Email Updates from ONC" section with a sign-up form and a "Go" button. The Windows taskbar at the bottom shows the Start button and several open applications, including "Inbox - Microsoft Out...", "Pandora Radio - Liste...", "Frequently Asked Qu...", and "HealthIT.hhs.gov: Hi...". The system clock shows "10:39 AM".

QUESTIONS?

Mat Kendall

Mat.kendall@hhs.gov