

Phase 1 (North Campus)

Intelligence Community Campus-Bethesda

4600 Sangamore Road

Bethesda, Montgomery County, MD

Submitted by the Army Corps of Engineers

Preliminary and Final Site and Building Plans

May 11, 2012

Commission meeting date: June 7, 2012

NCPC review authority: 40 U.S.C. § 8722(b)(1)

Applicant request: Approve site and building plans

Delegated / consent / open / executive session: Open

NCPC Review Officer: J. Hinkle

NCPC File number: 7326

Project summary:

The ICC-B North Campus project consists of all redevelopment and construction activities on the northern 12 acres of the ICC-B facility in order to achieve the goals and vision set forth in the Campus Site Development Guide. These improvements include the construction of a new Visitor Control Center, Vehicle Inspection Station, multi-story parking garage, temporary site access from Sangamore Road, and associated site, security, landscaping, and similar improvements.

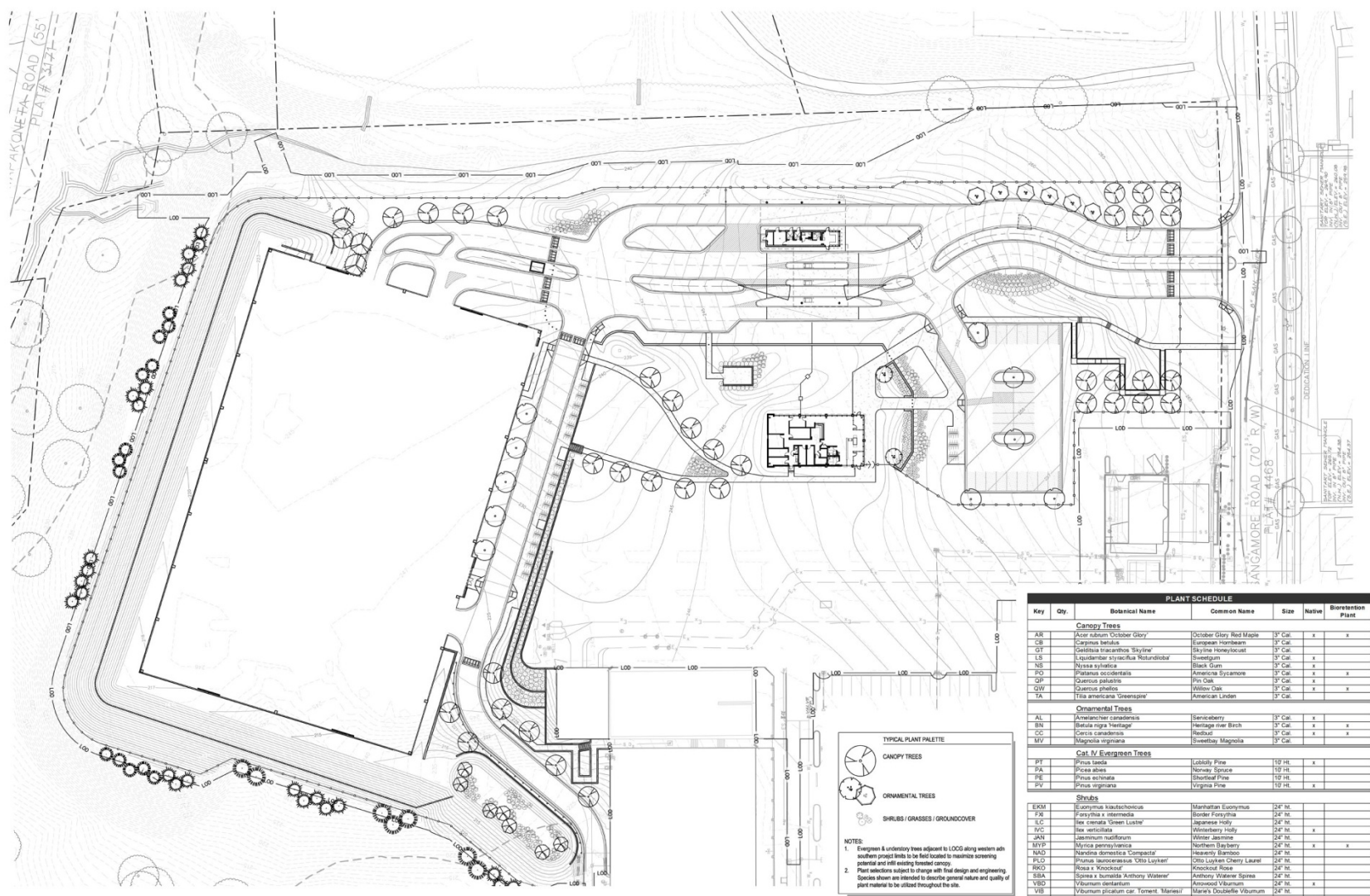
The Visitor Control Center is approximately 4,000 square feet, the Vehicle Inspection Station is approximately 5,600 covered square feet, and the Garage is approximately 93,500 square feet. Within the Limit of Disturbance, final site coverage will be approximately 4.3 acres of impervious surface and 6.2 acres of pervious surfaces.

The principle existing feature and use of North Campus area is surface asphalt parking. The redevelopment calls for the removal of this parking lot and the construction of above described facilities. As the Campus will be occupied throughout the redevelopment, the North Campus project allows for a practical delineation between the existing work-force and the ongoing construction activities. That is, during this project, employees will be confined to the southern portion of the campus, and contractors and construction activities will take place on the north side. After the North Campus redevelopment is complete, employees will enter, park, and access the facilities from the north side, and contractors and construction activities will occur on the southern end, or South Campus.

Phase 1 location within the ICC-B property



Phase 1 location denoted by the proposed limits of clearing and grading within graphic



ICC-B NORTH CAMPUS
 Montgomery County, Maryland
 Clark Construction

TYPICAL PLANT PALETTE

CANOPY TREES

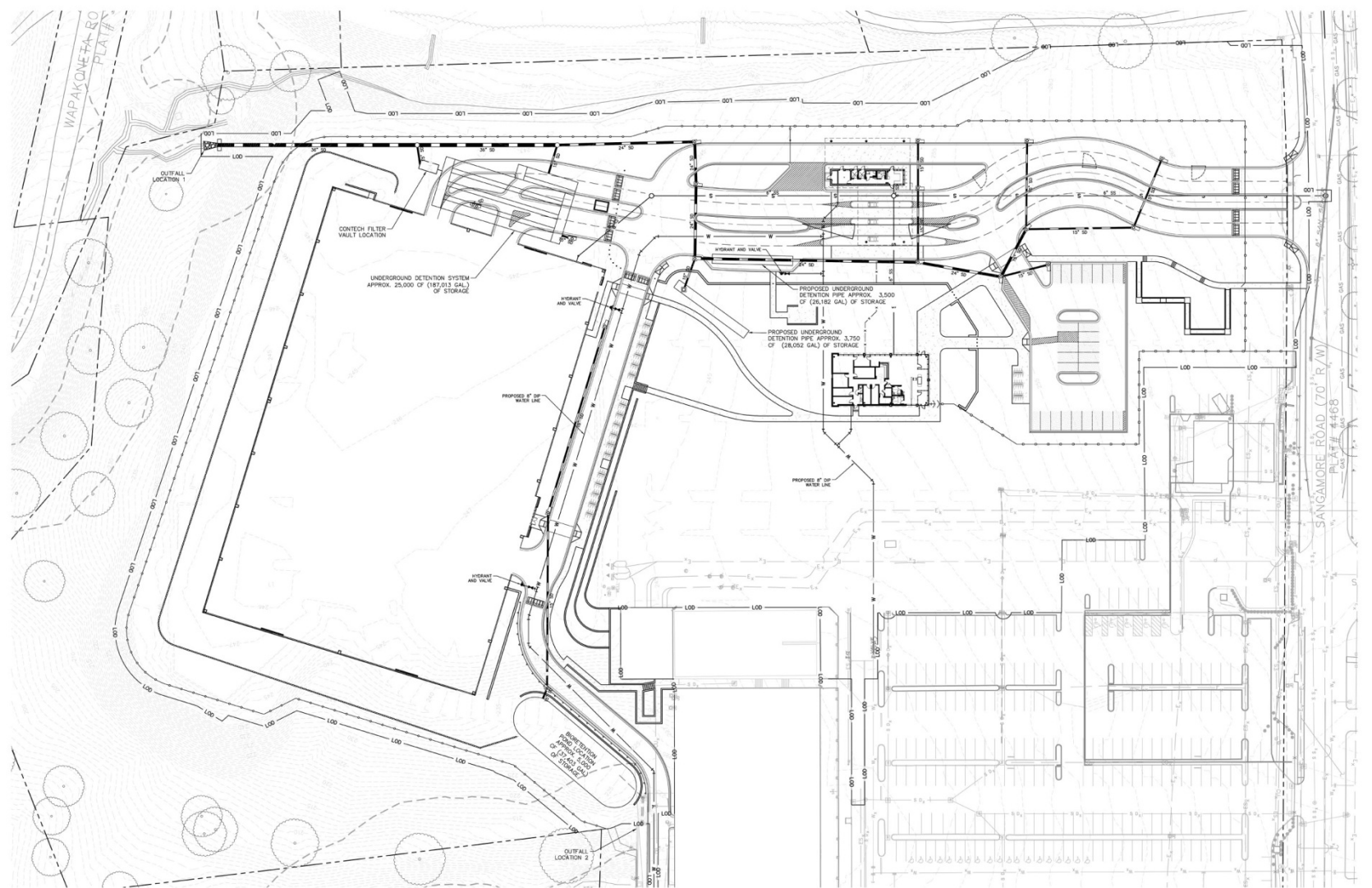
ORNAMENTAL TREES

SHRUBS / GRASSES / GROUNDCOVER

NOTES:

- Evergreen & understory trees adjacent to LOCC along western and southern property lines to be field-trippled to maximize screening potential and still existing forested canopy.
- Plant selections subject to change with final design and engineering. Species shown are intended to describe general nature and quality of plant material to be utilized throughout the site.

PLANT SCHEDULE						
Key	Qty.	Botanical Name	Common Name	Size	Native	BioRetention
Canopy Trees						
AK		<i>Acer rubrum</i>	October Glory Red Maple	3" Cal.	x	x
CB		<i>Carpinus betulus</i>	European Hornbeam	3" Cal.	x	
GT		<i>Gleditsia triacanthos</i>	Skyline Honeylocust	3" Cal.		x
LS		<i>Liquidambar styraciflua</i>	Black Sweetgum	3" Cal.	x	
NS		<i>Nyssa sylvatica</i>	Black Gum	3" Cal.	x	x
PD		<i>Platanus occidentalis</i>	American Sycamore	3" Cal.	x	x
QF		<i>Quercus falcata</i>	Pink Oak	3" Cal.	x	
GW		<i>Quercus phellos</i>	Willow Oak	3" Cal.	x	x
TA		<i>Tilia americana</i>	American Linden	3" Cal.		x
Ornamental Trees						
AL		<i>Amelanchier canadensis</i>	Sweetgum	3" Cal.	x	
BN		<i>Betula nigra</i>	Heritage River Birch	3" Cal.	x	x
CC		<i>Cercis canadensis</i>	Redbud	3" Cal.	x	
MV		<i>Magnolia virginiana</i>	Sweetbay Magnolia	3" Cal.		x
Cat. IV Evergreen Trees						
PF		<i>Prinus laevis</i>	Lobby Pine	10" HL	x	
PA		<i>Picea abies</i>	Norway Spruce	10" HL		x
PE		<i>Prinus acuminata</i>	Blue Spruce	10" HL		x
PV		<i>Prinus virginiana</i>	Virginia Pine	10" HL	x	
Shrubs						
EKM		<i>Euonymus alatus</i>	Manhattan Euonymus	24" HL		
FK		<i>Forsythia x intermedia</i>	Hardy Forsythia	24" HL		
LC		<i>Ilex crenata</i>	Green Leafy	24" HL		
LD		<i>Ilex verticillata</i>	Winter Holly	24" HL	x	
JAN		<i>Jasminum nudiflorum</i>	Winter Jasmine	24" HL		
NP		<i>Nyssa pernyi</i>	Northern Bayberry	24" HL	x	x
NAD		<i>Nandina domestica</i>	Heavenly Bamboo	24" HL		
PLD		<i>Prunus laurocerasus</i>	Cherry Laurel	24" HL		
PRD		<i>Rosa x Knockout</i>	Knockout Rose	24" HL		
SBA		<i>Spiraea x bumalda</i>	Anthony Waterer Spirea	24" HL		
VSD		<i>Viburnum dentatum</i>	Arrowwood Viburnum	24" HL	x	
VIB		<i>Viburnum plicatum</i>	Maries' Doublefile Viburnum	24" HL		
VRS		<i>Viburnum rooseanum</i>	Smooth Arrowwood Viburnum	24" HL	x	

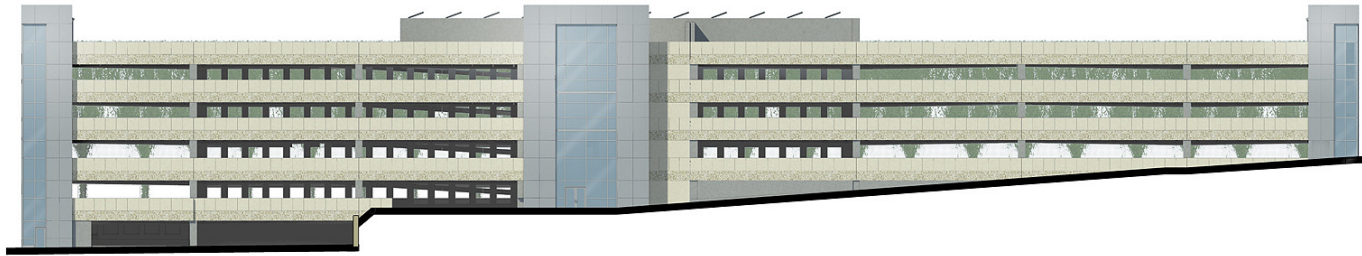


ICC-B NORTH CAMPUS
Montgomery County, Maryland
Clark Construction

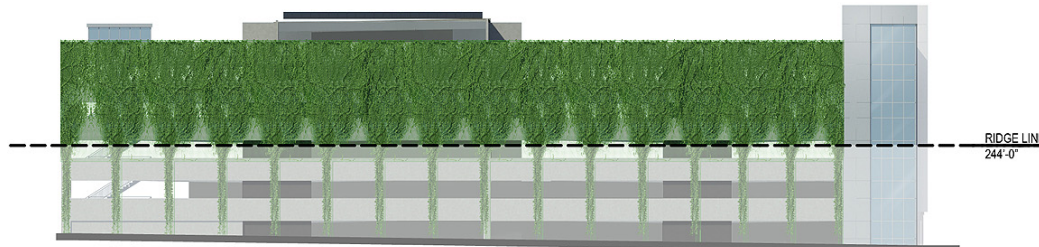


STORMWATER MANAGEMENT PLAN
05.04.2012 Scale: N.T.S.

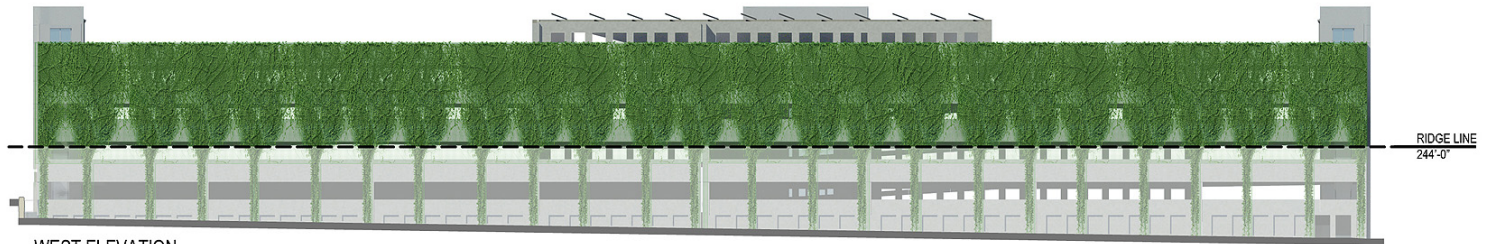




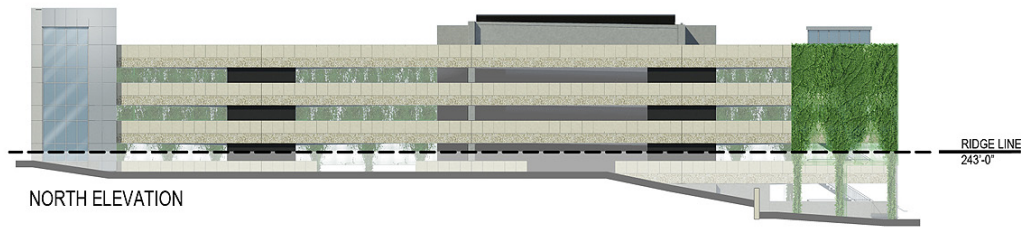
EAST ELEVATION



SOUTH ELEVATION



WEST ELEVATION



NORTH ELEVATION

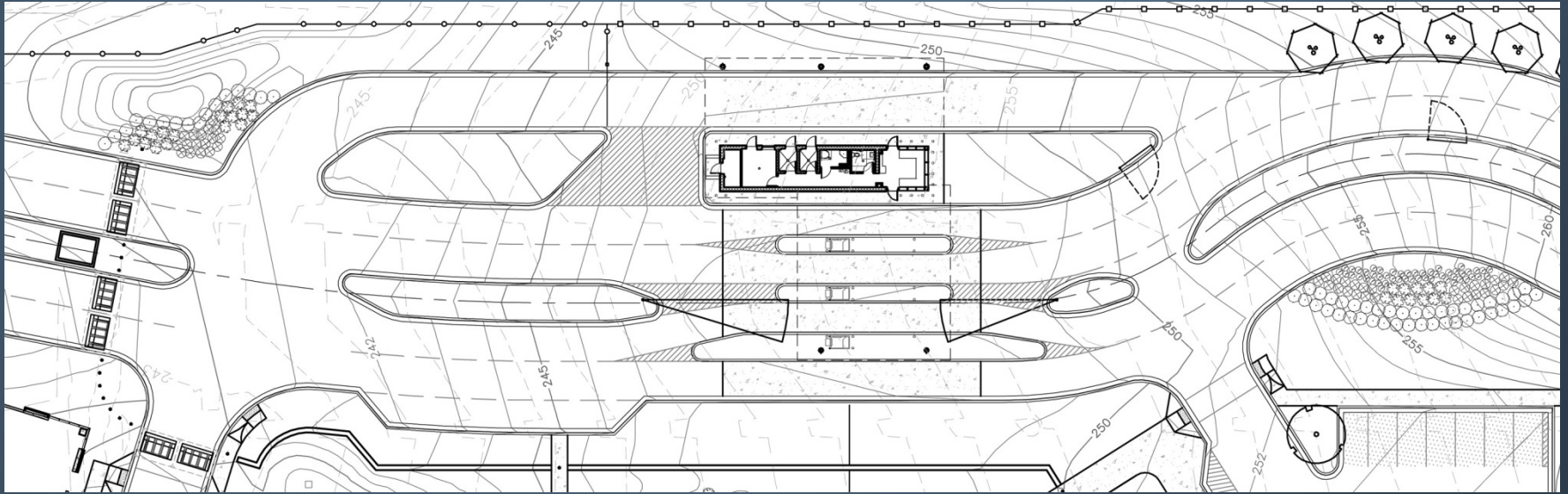
ICC-B NORTH CAMPUS
Montgomery County, Maryland

Clark Construction

GARAGE ELEVATIONS
05.04.2012 Scale: N.T.S.



Vehicle Inspection Station site plan



Vehicle Inspection Station elevations



NORTH ELEVATION

WEST ELEVATION



SOUTH ELEVATION

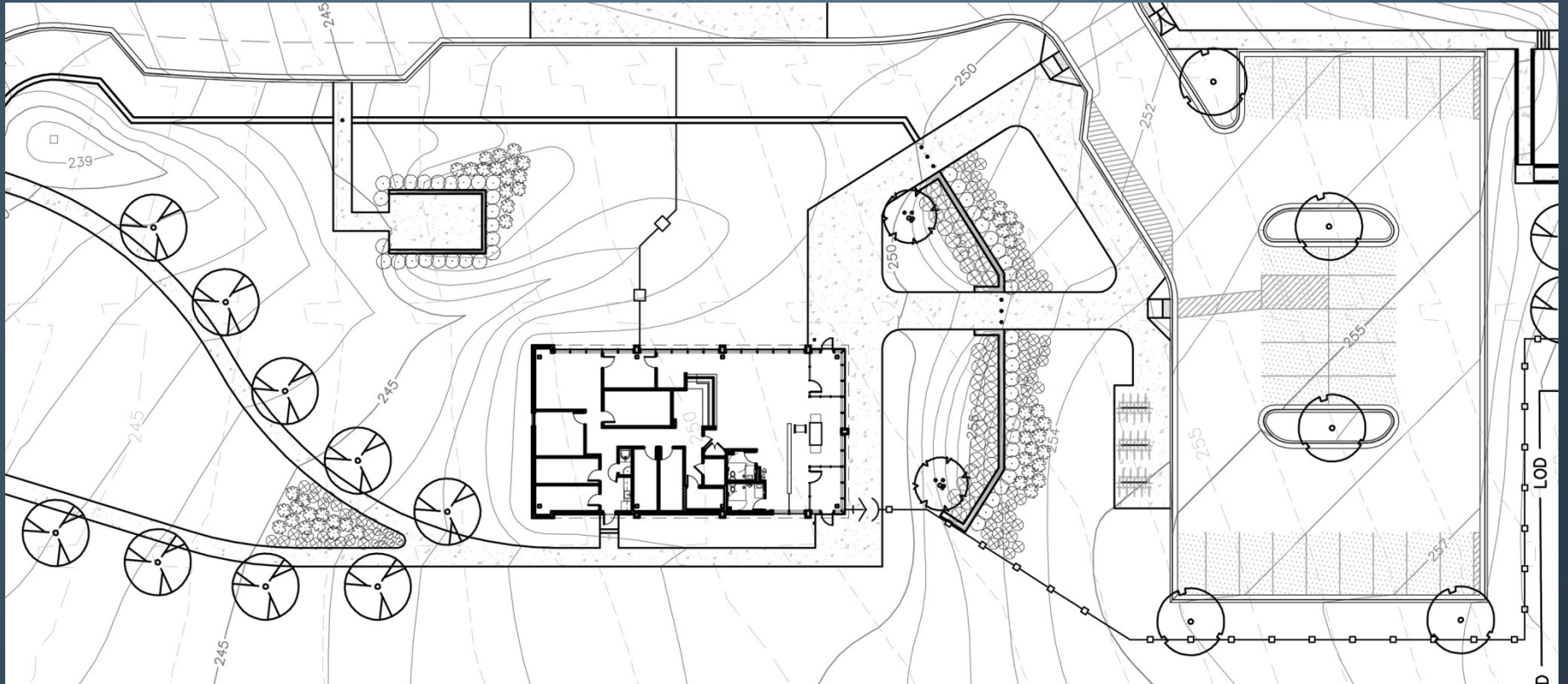
EAST ELEVATION

ICC-B NORTH CAMPUS
Montgomery County, Maryland

Clark Construction

VEHICLE INSPECTION STATION VIS | ELEVATIONS
05.04.2012 Scale: N.T.S.



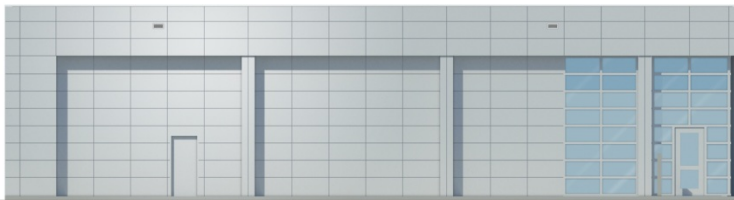




NORTH ELEVATION



WEST ELEVATION



SOUTH ELEVATION



EAST ELEVATION

ICC-B NORTH CAMPUS
Montgomery County, Maryland
Clark Construction

VISITOR CONTROL CENTER VCC | ELEVATIONS
05.04.2012 Scale: N.T.S.

