

Fig. 1. The National Museum of Natural History Preliminary Site Plan



Fig. 2. The National Museum of Natural History North Entrance (Constitution Avenue, NW) Partial Site Plan and Elevation



Fig. 3. The National Museum of Natural History  
Partial Site Plan and West Elevation (12<sup>th</sup> Street, NW)

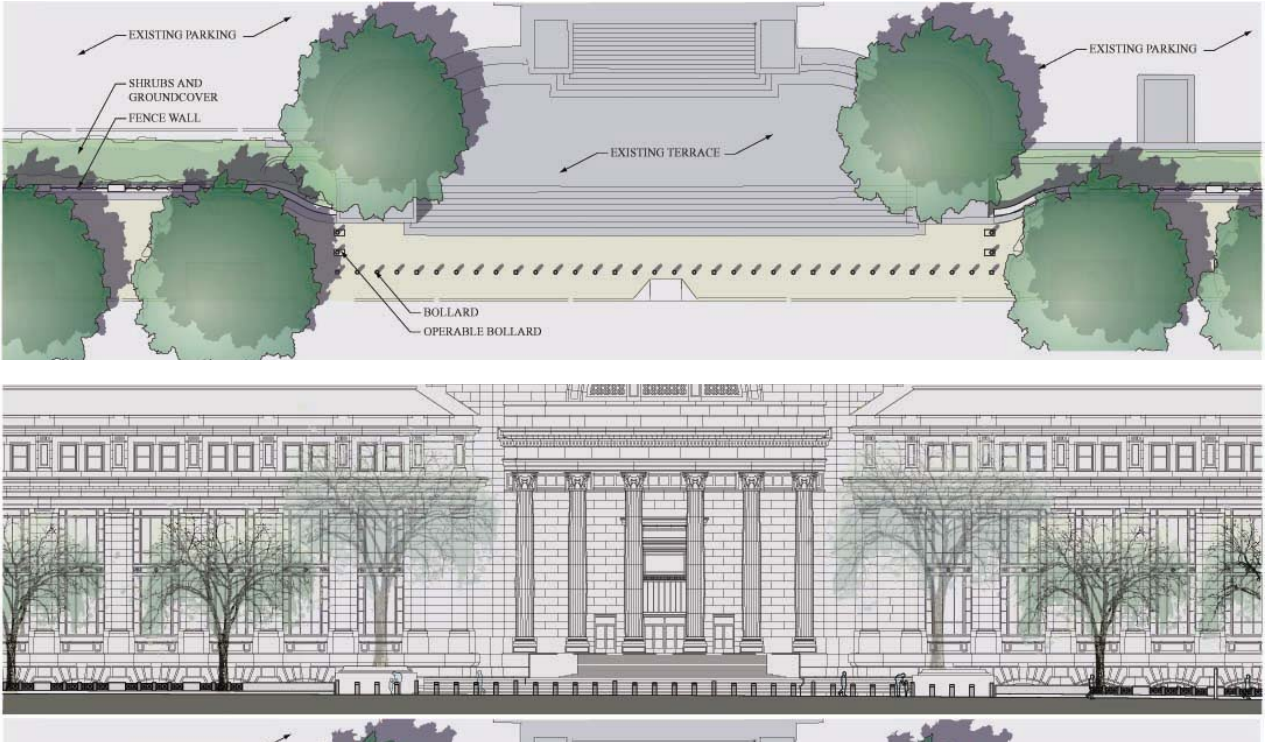


Fig. 4. The National Museum of Natural History  
South Entrance (Madison Drive, NW) Partial Site Plan and Elevation

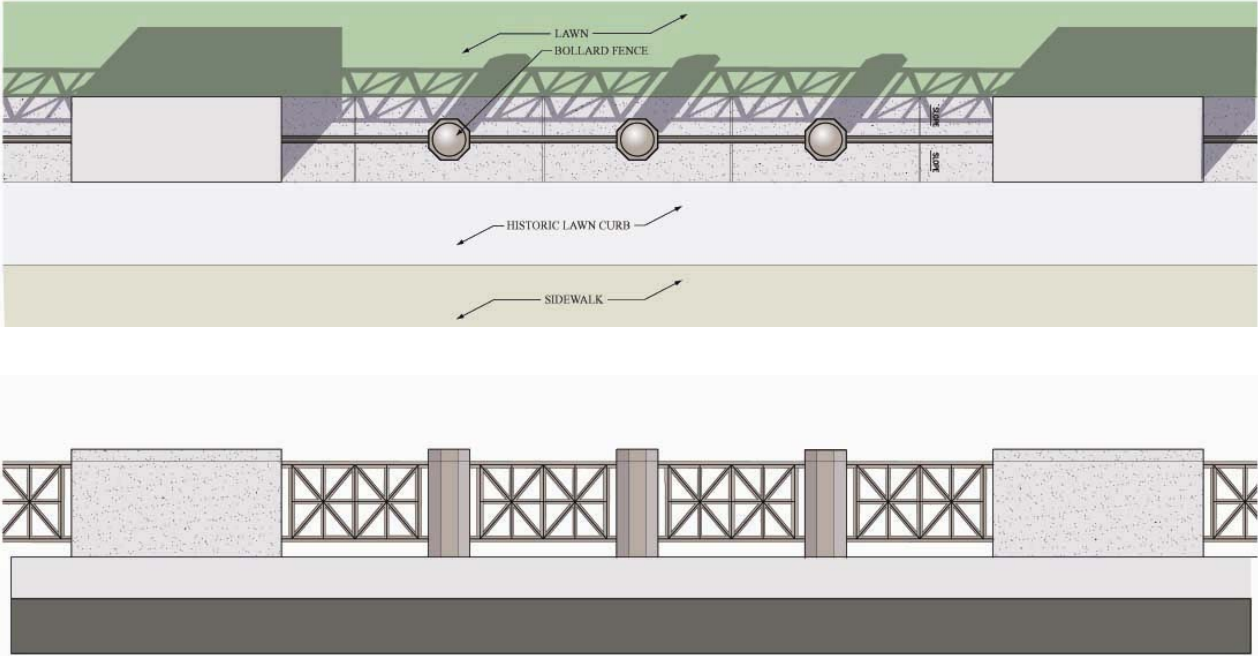


Fig. 5. The National Museum of Natural History  
Detail Plan and Elevation of Typical Low Wall and Fence Panel

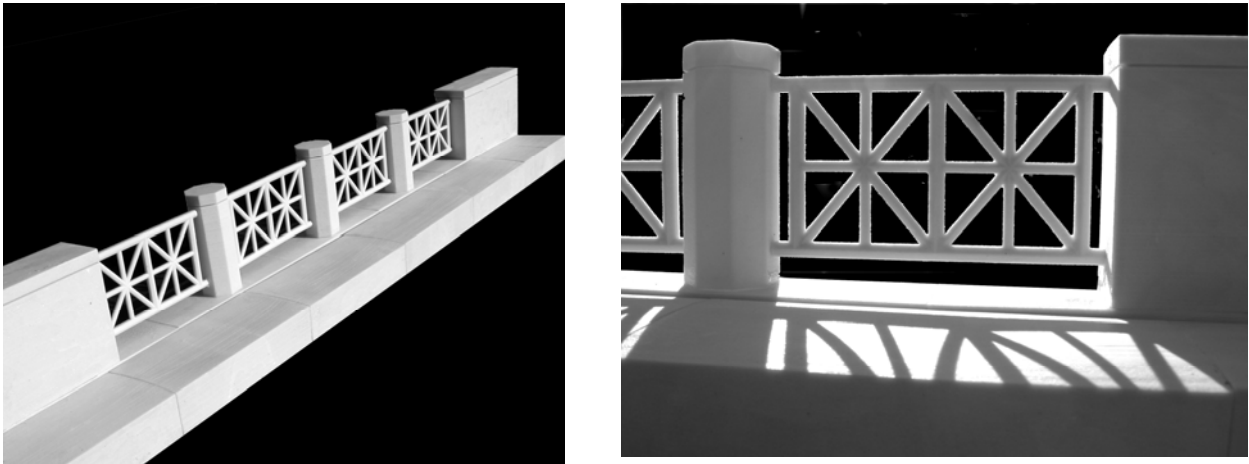
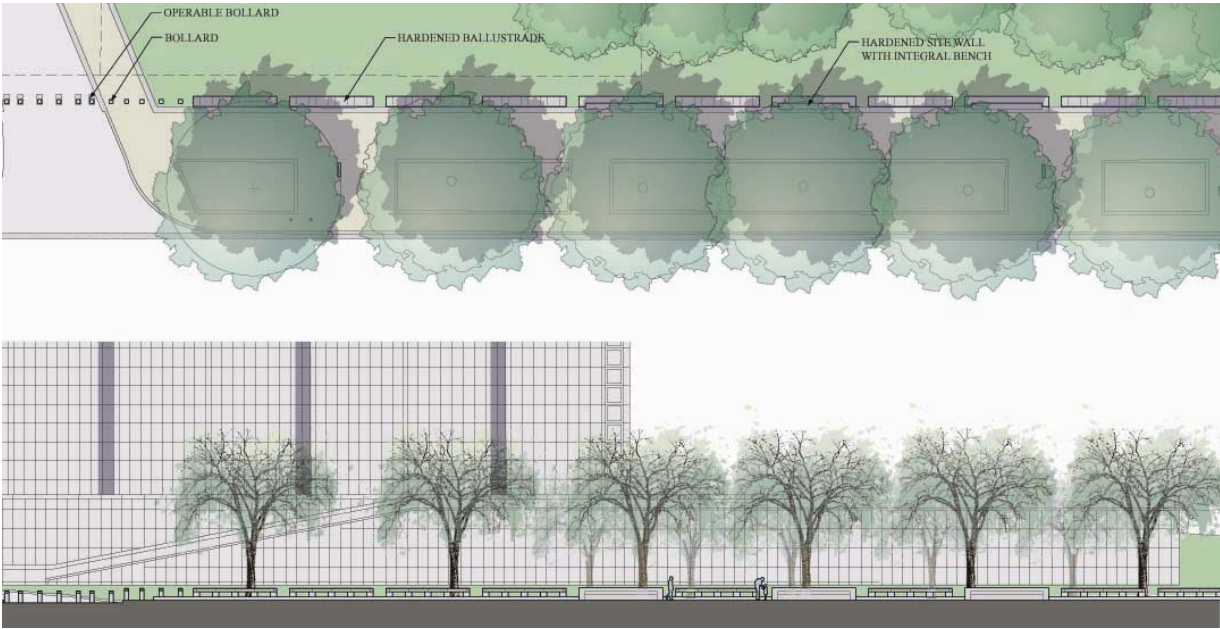
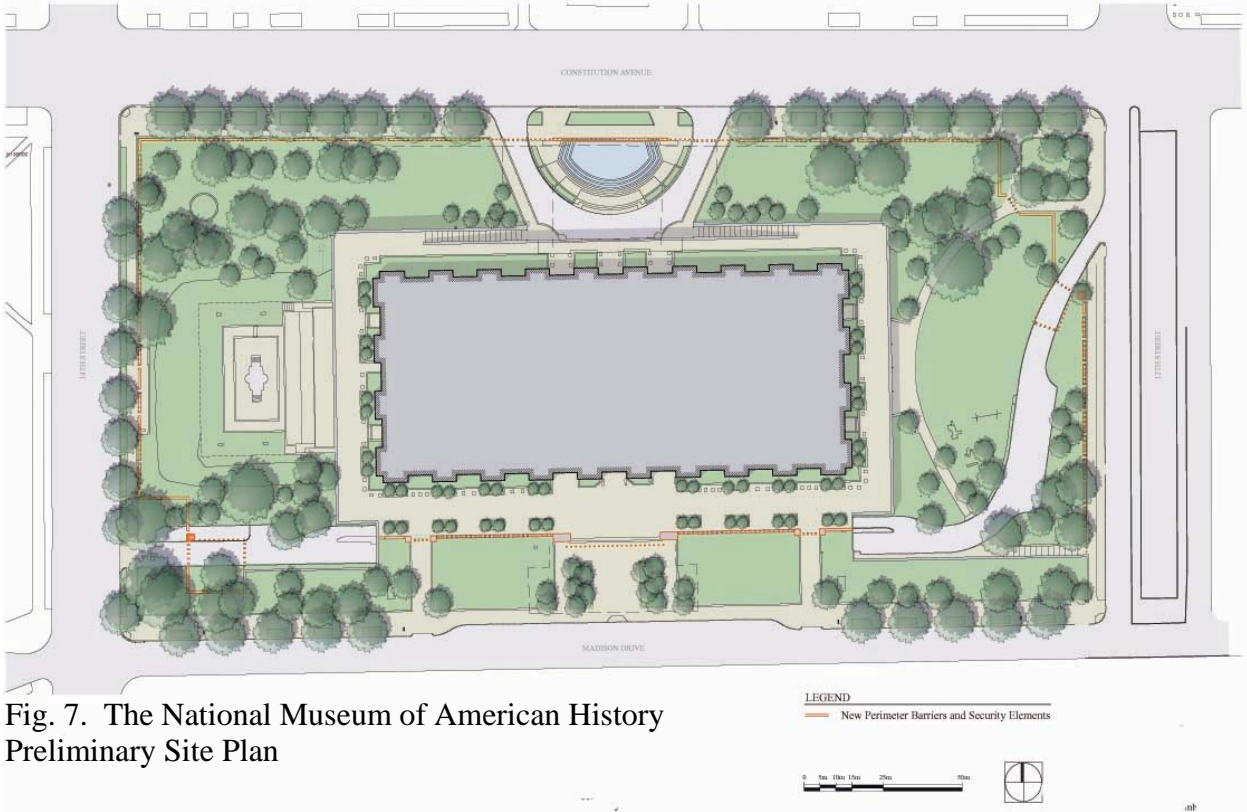


Fig. 6. The National Museum of Natural History  
Model Details of Typical Low Wall and Fence Panels



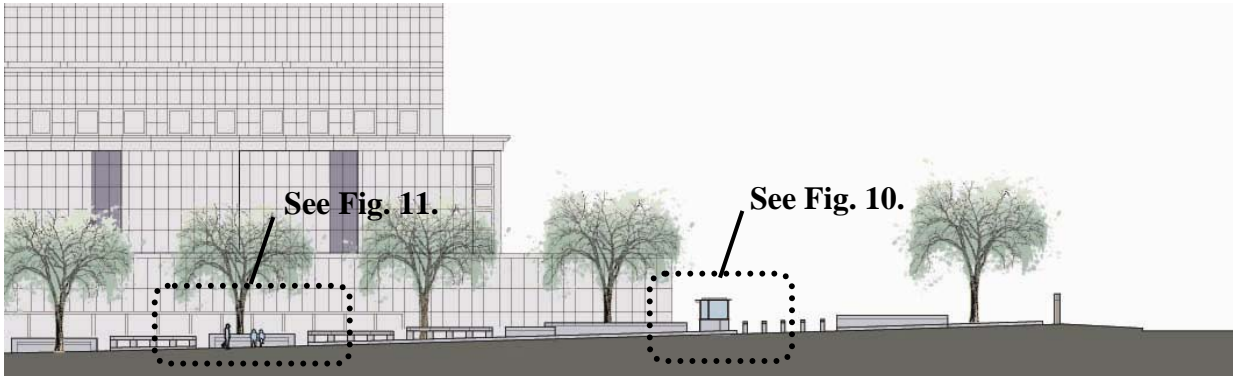


Fig. 9. The National Museum of American History  
Partial West Elevation (14<sup>th</sup> Street, NW)

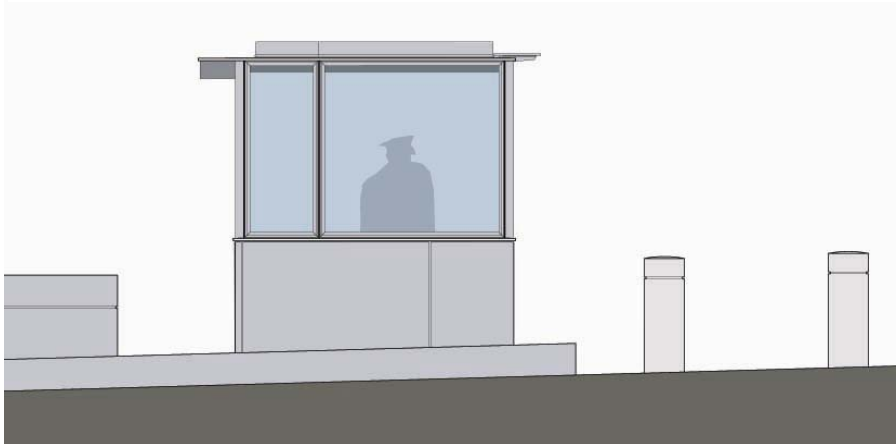


Fig. 10. The National Museum of American History  
Guard Booth Elevation

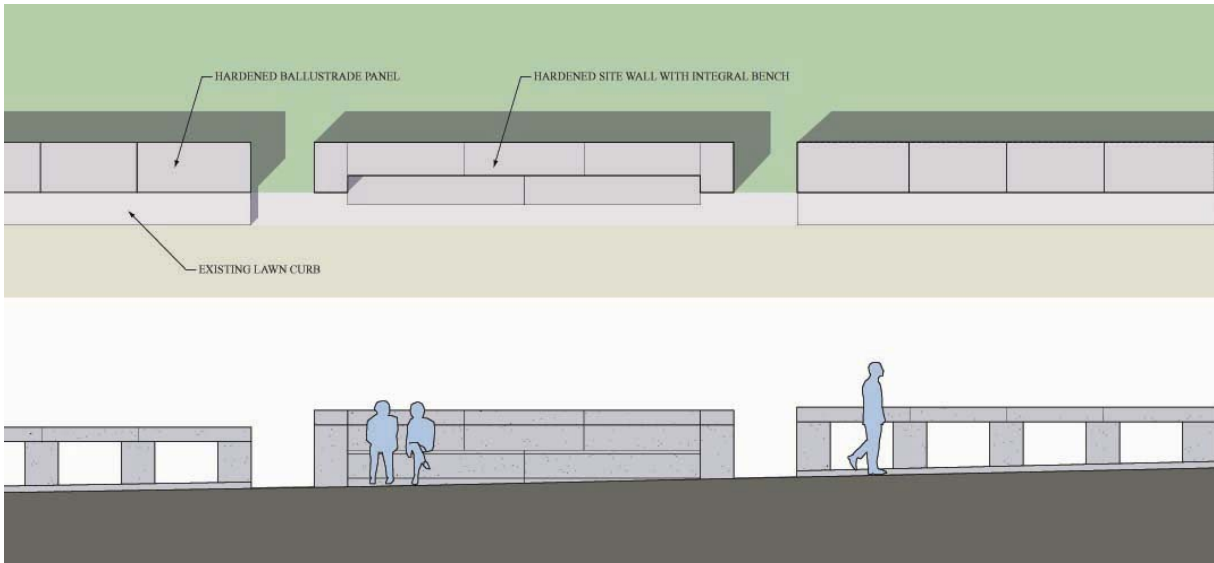


Fig. 11. The National Museum of American History  
Detail Plan and Elevation of Typical Low Wall and Bench



Fig. 12. The National Museum of American History South Entrance (Madison Drive, NW) Partial Site Plan and Elevation

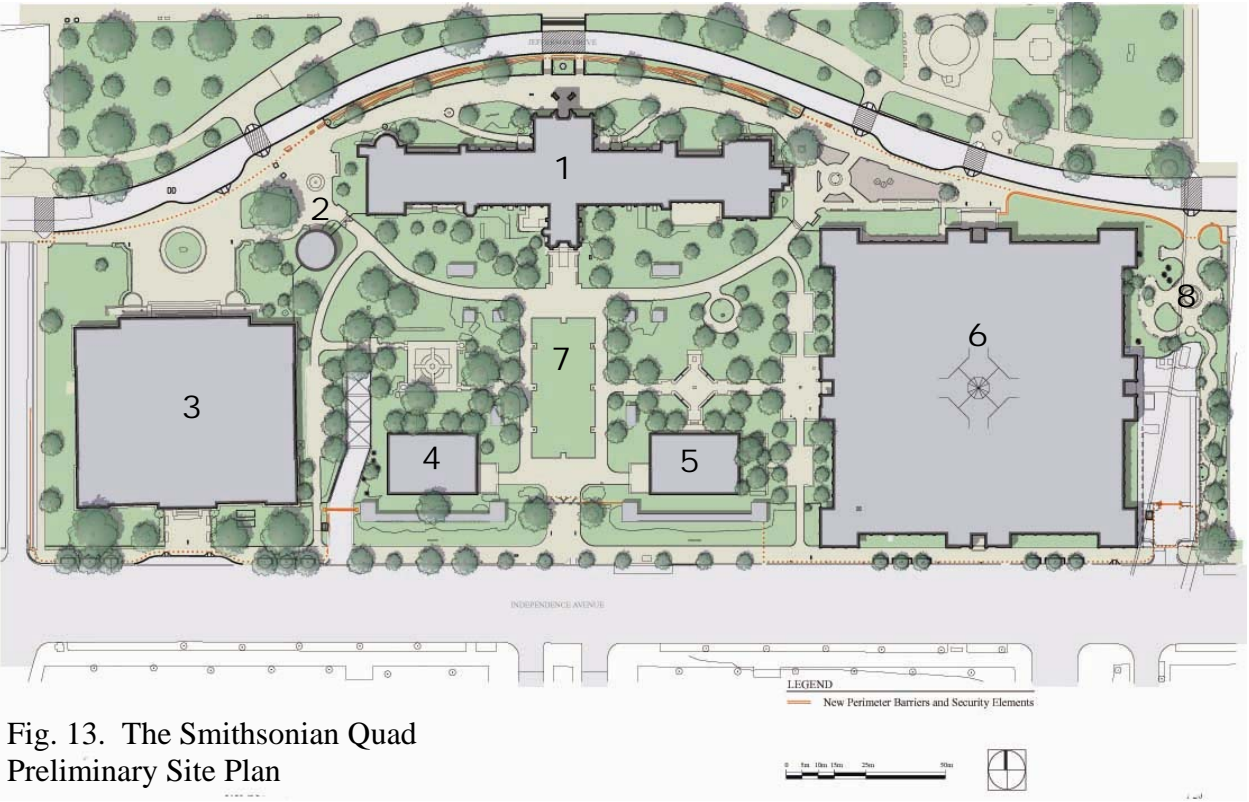


Fig. 13. The Smithsonian Quad Preliminary Site Plan

- 1) The Smithsonian Castle; 2) The S. Dillion Ripley Center; 3) The Freer Gallery of Art; 4) The Arthur M. Sackler Gallery of Art; 5) The Museum of African Art; 6) The Arts and Industries Building; 7) Haupt Garden; 8) Ripley Garden

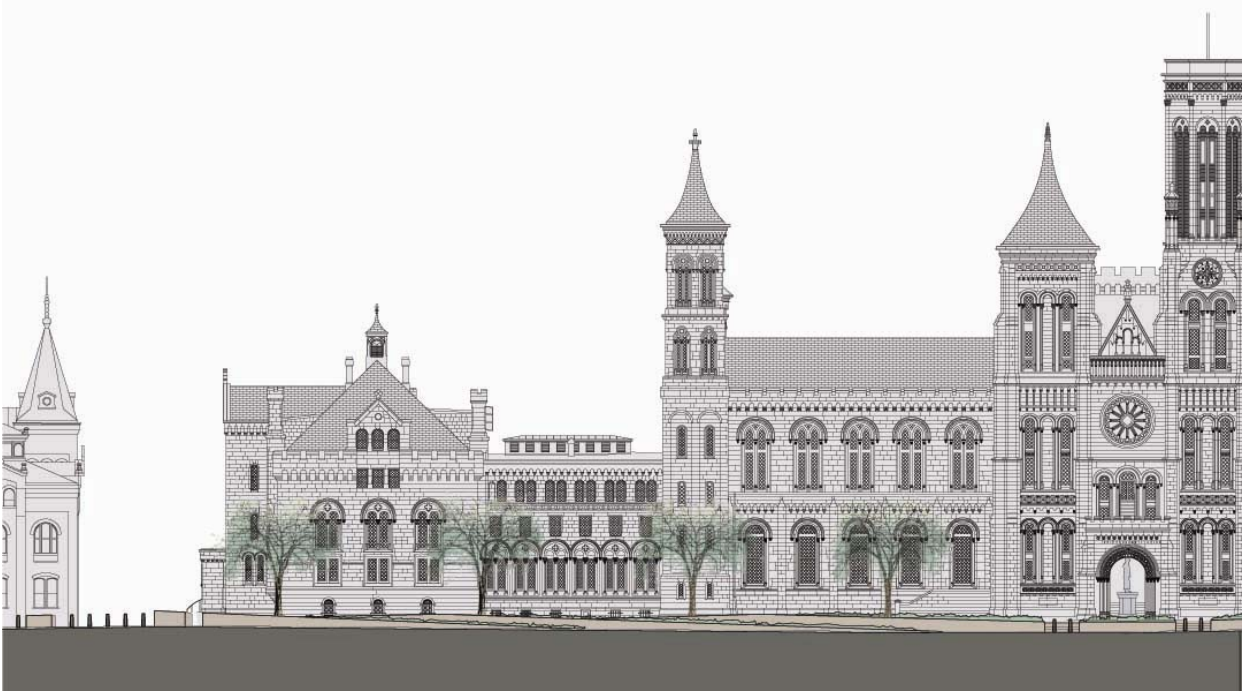


Fig. 14. The Smithsonian Castle  
Partial North Elevation (Jefferson Drive)

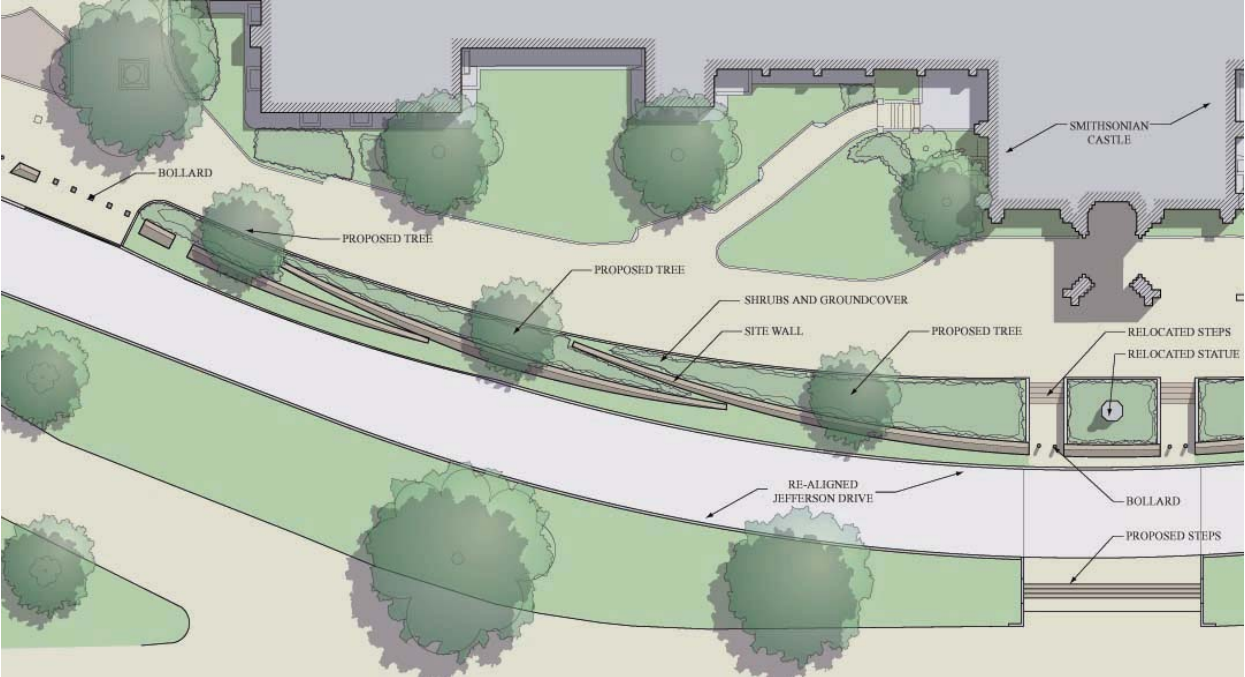


Fig. 15. The Smithsonian Castle  
Partial Site Plan along Jefferson Drive



Fig. 16. The Smithsonian Castle  
Perspective Rendering looking east along Jefferson Drive

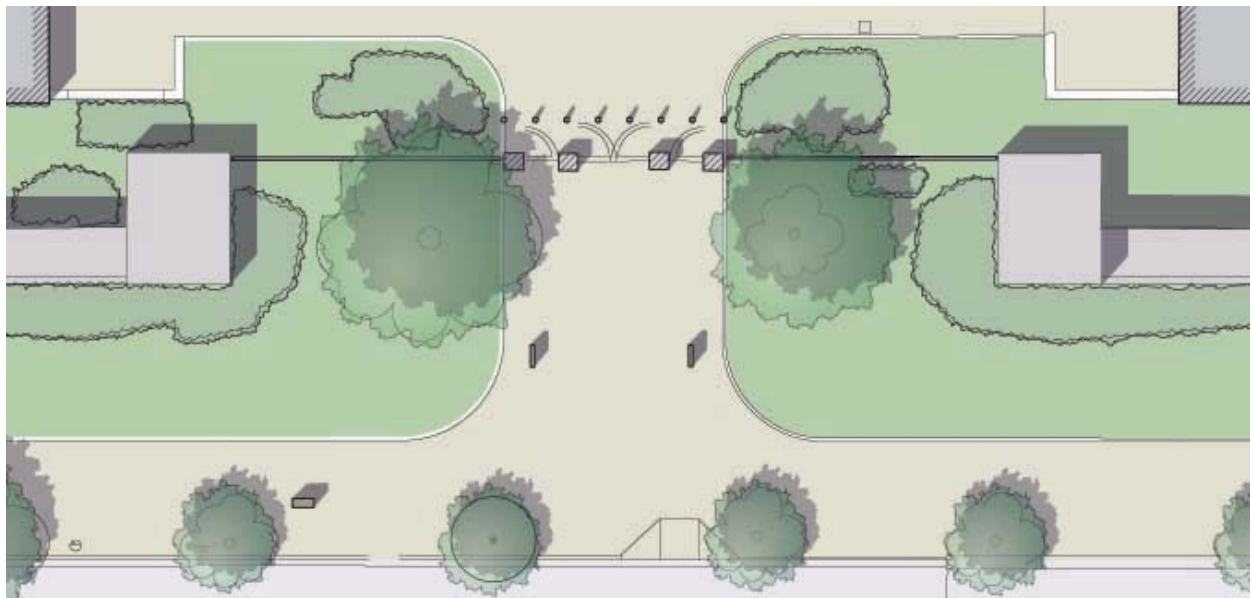


Fig. 17. The Quad  
Partial Site Plan of Haupt Garden Gate along Independence Avenue, SW



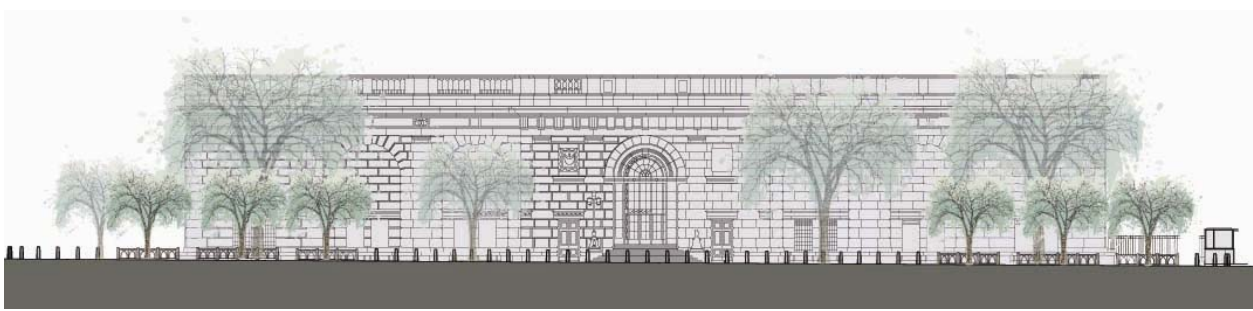
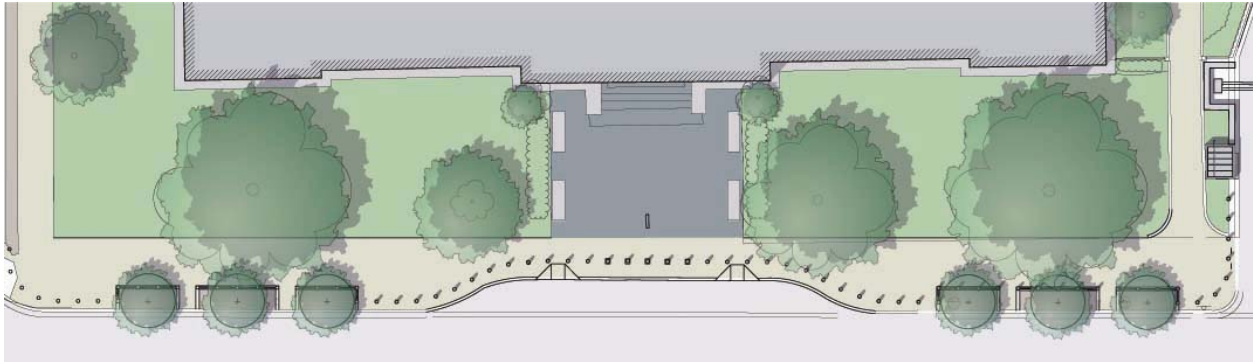


Fig. 18. The Freer Gallery of Art  
South Entrance (Independence Avenue, SW) Partial Site Plan and Elevation



Fig. 19. The Quad  
Model Details of Tree Pit Fence Panels along Independence Avenue, SW



Fig. 20. The Quad  
3-D Model of Typical Bollard (Independence Avenue, SW)



Fig. 21. The Quad  
Guard Booth Elevation (adjacent to the Freer Gallery along Independence Avenue, SW)

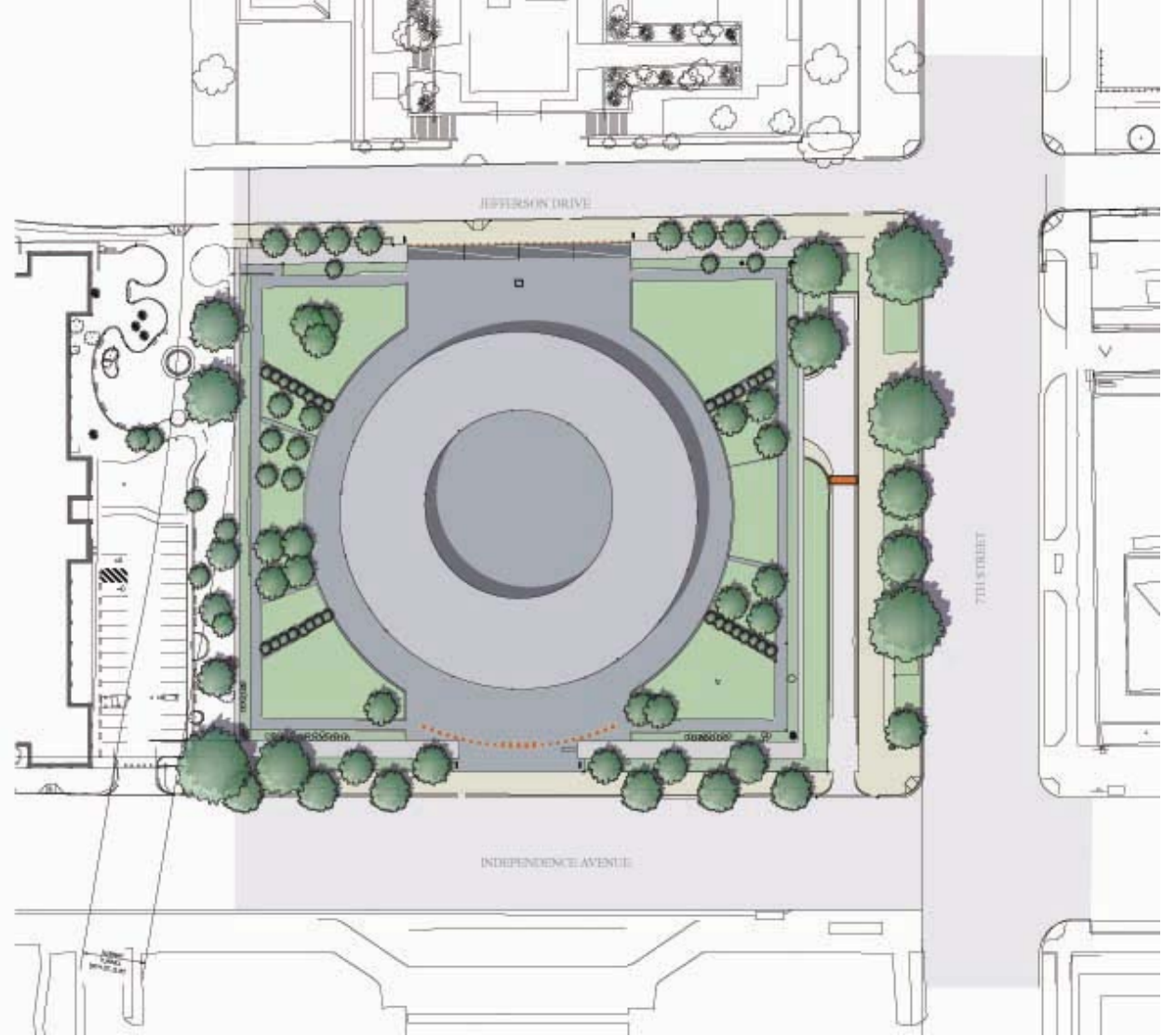


Fig. 22. The Hirshorn Museum  
Preliminary Site Plan

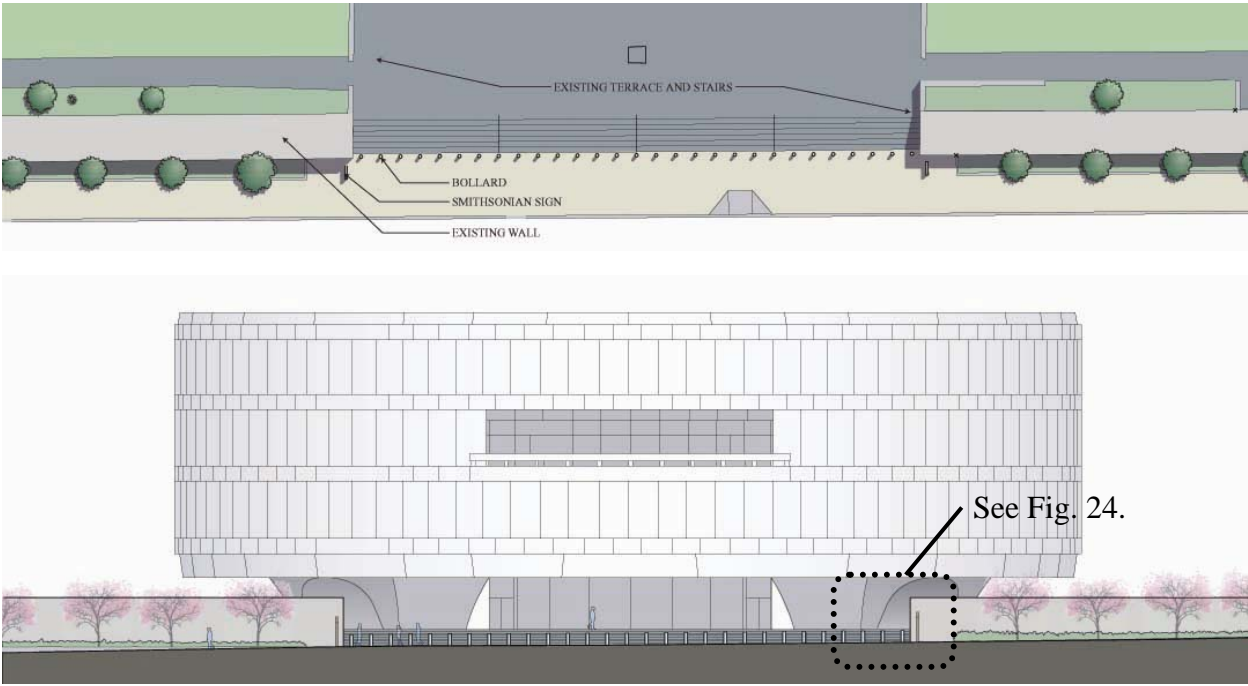


Fig. 23. The Hirshorn Museum  
North Entrance (Jefferson Drive, SW) Partial Site Plan and Elevation

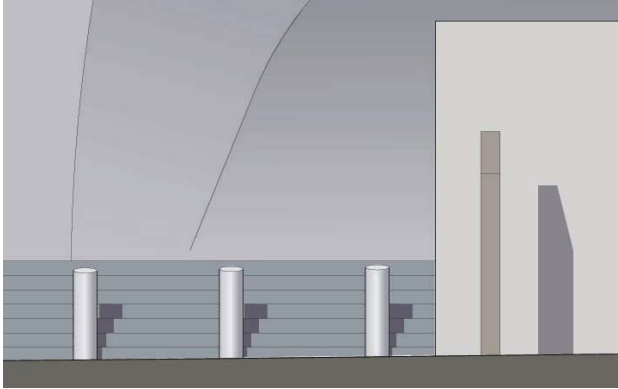


Fig. 24. The Hirshorn Museum  
North Entrance Bollard Detail

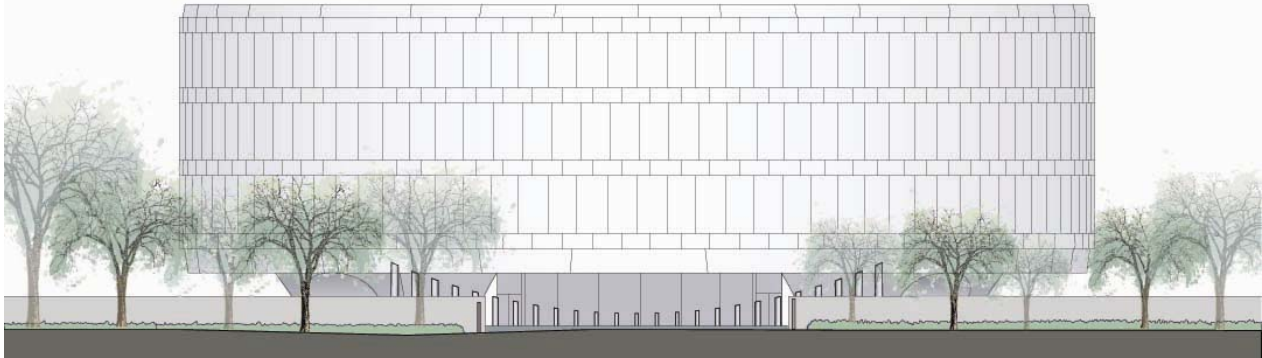
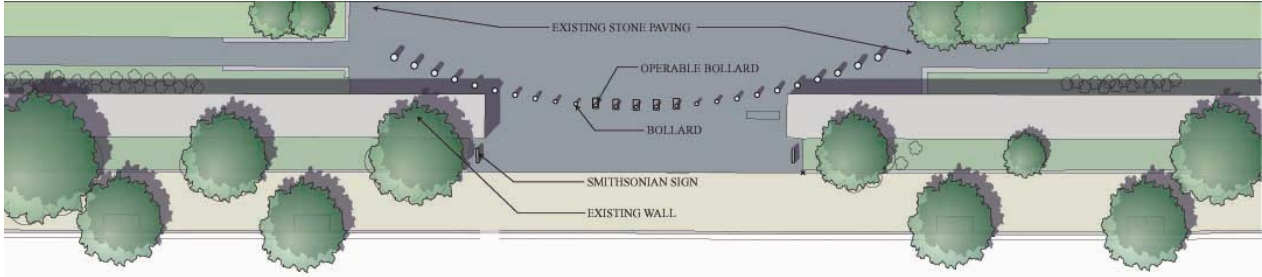


Fig. 25. The Hirshorn Museum  
Partial Site Plan and South Elevation (Independence Avenue, SW)

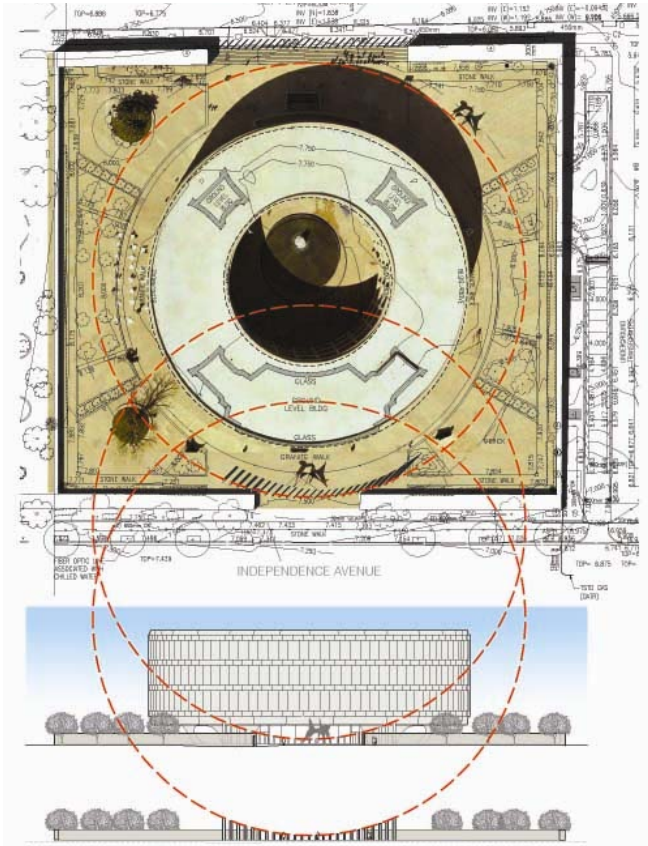


Fig. 26. The Hirshorn Museum  
Site and South Elevation Illustrative Concept for  
Commissioned Art Bollard



Fig. 27. The Hirshorn Museum  
South Entrance Photo Montage