

# 2003

Issued September 2003

PRODPR/03-2

## Product Profile

*a data products update from the U.S. Census Bureau*

### SF 2 at a Glance

- Key demographic and housing data from Census 2000
- Tables repeated for 249 racial and ethnic groups
- Complete U.S. coverage, plus Puerto Rico
- Census tract geography allows small-area analysis
- All 47 statistical tables on the Web and on CD-ROM and DVD
- Shortcuts to the data in American FactFinder®
- Powerful, easy-to-use software on CD-ROM and DVD

## Census 2000 Summary File 2

### Recording America's Diversity

During Census 2000 operations, one key message to the public was, "Fill out your census form and show pride in your heritage." Questions on race, Hispanic or Latino origin, and ancestry allowed Americans to record their heritage.

Heritage is very much the focus of Summary File (SF 2), the second of four summary files with detailed statistics from Census 2000, representing input from 281 million people living in 105 million housing units. SF 2 offers extensive detail on the demographics of the nation's race and ethnic groups. (Ancestry was reported on the long form and is not shown in Summary File 2, which presents short form data. Ancestry data are in Summary Files 3 and 4.)

### Data in SF 2 Are Based on the Census 2000 Questions Asked of Everyone

The SF 2 data are drawn from responses to questions asked of everyone in Census 2000: on age, sex, race, Hispanic or Latino origin, household relationship, and owner/renter status. These questions were asked on both the short form and the long form (the sample questionnaire).

How many Hispanic homeowners live in your community? What is their average household size, and how many live in households larger or smaller than the average? What is their household type? How many are Cuban, how many are Puerto Rican? How many cite Peruvian as their ethnic origin? SF 2 lets you show characteristics for up to 249 race and Hispanic or Latino groups. SF 2 has selected key tables previously released in SF 1 and shows them for these groups, provided they meet a population threshold (100 or more people in an area).

The three other summary files (SF 1, SF 3, and SF 4) fill in more parts of the picture. SF 1 has 286 tables based on the short form questions asked in the census, with data for areas as small as census blocks.

SF 2 has a subset of the tables found in SF 1. SF 3 and SF 4 provide data from the sample questions asked of about 1/6th of America's households – the long form questions on income, education, language spoken, housing structure, housing costs, commuting, and many other topics. All the summary files are available.

United States  
**Census  
2000**

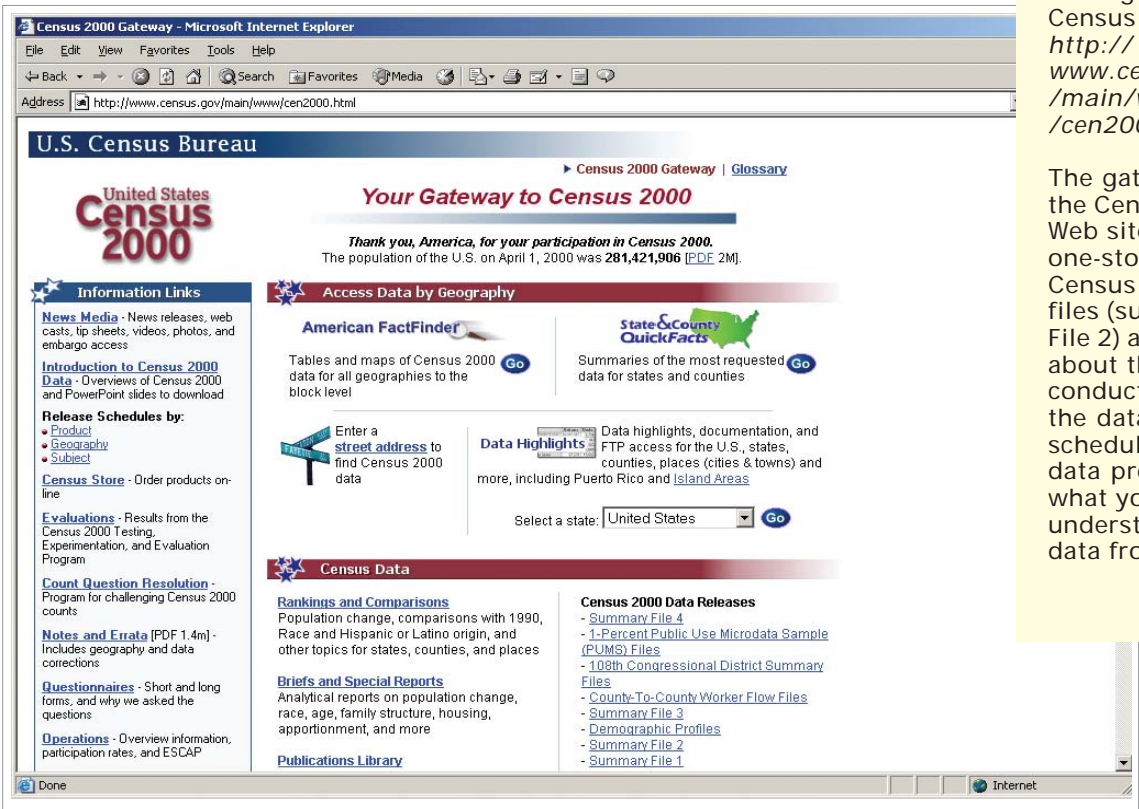
[www.census.gov](http://www.census.gov)

**U S C E N S U S B U R E A U**

*Helping You Make Informed Decisions*

U.S. Department of Commerce  
Economics and Statistics Administration  
U.S. CENSUS BUREAU

Figure 1.  
Census 2000 Gateway



Your "gateway" to Census 2000 is <http://www.census.gov/main/www/cen2000.html>.

The gateway page on the Census Bureau's Web site gives you one-stop access to Census 2000 data files (such as Summary File 2) and information about the way we conducted the census, the data release schedule, the various data products, and what you need to understand and use data from the census.

## Basic Demographic and Housing Data in SF 2

SF 2 contains 47 detailed tables – 36 population tables and 11 housing tables. Appendix 1, in this profile (page 8), lists the table titles. There are two kinds of tables:

- PCT tables. Population data for a hierarchy of geographic areas down to the level of census tracts.
- HCT tables. Housing data for a hierarchy of geographic areas down to the level of census tracts.

In Census 2000, users were, for the first time, allowed to select more than one race. SF 2 allows users to study the racial mix for even the smallest areas. For any given area down to the level of census tract, tables may be repeated for up to 249 race and ethnic groups including —

- 132 race groups. Includes iterations for multirace groups.
  - 38 specific Asian groups.
  - 20 specific Native Hawaiian and other Pacific Islander groups.

- 78 specific American Indian and Alaska Native tribes.
- 39 Hispanic groups.

A table is shown for a specific group if there are 100 or more people in that group within the geographic area under scrutiny. If, for example, a county has 100 or more "Vietnamese alone," then all the SF 2 tables for that area are shown for "Vietnamese alone," as well as for other groups that meet that criterion.

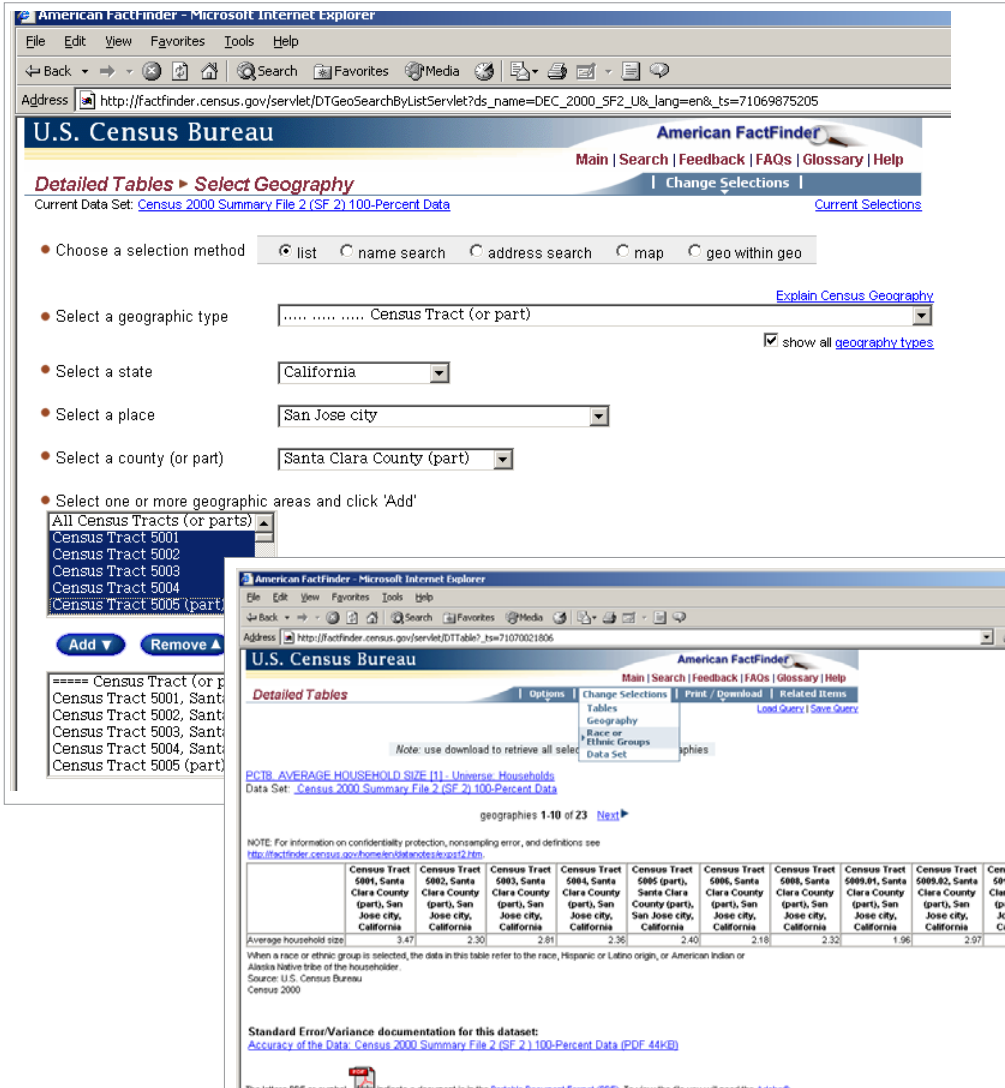
Appendix 2 in this profile (pages 9-11) lists the groups for which tables may be repeated in SF 2. A reference like "Vietnamese alone" identifies people who selected one race on their census questionnaire. The reference "Vietnamese alone or in any combination" identifies all those who selected "Vietnamese" as their race – including those who selected just one race and those who selected this race, plus some other race or races.

If you are making extensive use of the race and Hispanic/Latino data, be sure

to consult the discussion of "Hispanic or Latino" and "Race" in Appendix B, Definitions of Subject Characteristics, of the SF 2 technical documentation (online at <http://www.census.gov/prod/cen2000/doc/sf2.pdf>).

Definitions used by the Census Bureau in these cases, conform to the standards published in the October 30, 1997, *Federal Register* notice entitled "Revisions to the Standards for the Classification of Federal Data on Race and Ethnicity" (online at <http://www.census.gov/population/www/socdemo/race/Ombdir15.html>) issued by the Office of Management and Budget. These standards govern the categories used to collect and present federal data on race and ethnicity. More background, FAQs, and historical data can be found on the Census Bureau Web site (<http://www.census.gov/population/www/socdemo/race.html>).

**Figure 2.**  
**American FactFinder® Lets You Select Detailed Data From Summary File 2 – Down to the Census Tract Level**



First, go into American FactFinder®, select Summary File 2, and then “Detailed Tables.”

FactFinder leads you through the selection of one or more geographic areas – all the way down to the census tract. Then it prompts you to select one or more detailed tables from SF 2.

Here, we selected census tracts in San Jose, California, as our geography and chose Table PCT8, Average Household Size. After getting the table for the whole population, if you want to select this table for a specific race group (in this case, “Vietnamese alone”), you would go to change selections on the blue menu bar and select “Race or Ethnic Groups.” You would then be able to select from 249 race and ethnic groups, and FactFinder would display Table PCT8 for that group.

At the right, we show Table PCT8 from SF 2 – Average Household Size for people in San Jose, who identified themselves as “Vietnamese alone.” SF 2 shows a table for a group, only if the group numbers 100 or more people in that geographic area. San Jose has 191 census tracts; 122 of them have 100 or more “Vietnamese alone,” so Table PCT8 can be shown for these tracts only. Otherwise, you need to go to a higher geography.

| Census Tract  | Average household size |
|---|------------------------|
| 5995, Santa Clara County (part), San Jose city, California        | 3.47                   |
| 5992, Santa Clara County (part), San Jose city, California        | 2.30                   |
| 5993, Santa Clara County (part), San Jose city, California        | 2.91                   |
| 5994, Santa Clara County (part), San Jose city, California        | 2.36                   |
| 5995 (part), Santa Clara County (part), San Jose city, California | 2.40                   |
| 5996, Santa Clara County (part), San Jose city, California        | 2.18                   |
| 5998, Santa Clara County (part), San Jose city, California        | 2.32                   |
| 5999.01, Santa Clara County (part), San Jose city, California     | 1.96                   |
| 5999.02, Santa Clara County (part), San Jose city, California     | 2.97                   |
| 5999, Santa Clara County (part), San Jose city, California        | 2.60                   |

|   | A   | B                      | C |
|---|---|------------------------|---|
| 1 | PCT8. AVERAGE HOUSEHOLD SIZE [1] - Universe: Households   |                        |   |
| 2 | Race or Ethnic Group: Vietnamese alone  |                        |   |
| 3 | Data Set: Census 2000 Summary File 2 (SF 2) 100-Percent Data  |                        |   |
|   | NOTE: For information on confidentiality protection, nonsampling error, and definitions see <a href="http://factfinder.census.gov/home/en/datanotes/expfs2.htm">http://factfinder.census.gov/home/en/datanotes/expfs2.htm</a> . |                        |   |
| 4 | □   |                        |   |
| 5 |   | Average household size |   |
| 6 | Census Tract 5001, Santa Clara County (part), San Jose city, California   | 3.98                   |   |
| 7 | Census Tract 5002, Santa Clara County (part), San Jose city, California   | 3.27                   |   |
| 8 | Census Tract 5009.01, Santa Clara County (part), San Jose city, California  | 2.2                    |   |

## Geography in SF 2

Like all summary files, Summary File 2 is packed with data for many kinds of geographic areas. It serves users interested in the macro view (for example, the United States as a whole or individual states) and the micro view (census tracts), as well as all areas in between.

It gives you a summary of geographic areas (all census tracts in a county) or parts of areas (for example, part of an Indian reservation within a state).

**State Files.** SF 2 was released as a series of state files, with a final national file. There also are files for the District of Columbia and Puerto Rico. The table designs are standard for each kind of geographic area. You can obtain SF 2 on a CD-ROM for each state (as well as for the District of Columbia and Puerto Rico) or all the files on one DVD (see the order form on page 12). Both the CD-ROMs and the DVDs come with software for accessing and downloading the data; the DVD allows you to generate national or regional totals for geographic areas, such as metro areas, regardless of state.

**National File.** The national file provides summaries for higher levels of geography and covers the entire country. This file is designed for users who need to produce national or regional summaries of an area (e.g., all metro areas), but do not need the data for really small areas such as census tracts. They will find it easier to generate these figures using the national file or the U.S. summary file on DVD, rather than the individual state files on CD-ROM.

Geographic areas shown in total or in part include —

- United States
- Census Regions
- Census Divisions
- States
- District of Columbia
- Puerto Rico

- Counties
- Metropolitan Areas
- Urban Areas
- County Subdivisions
- Places
- Consolidated Cities
- American Indian Areas
- Alaska Native Areas
- Hawaiian Home Lands
- Census Tracts

## Internet Access Through American FactFinder®

Visit the Census Bureau's homepage (<http://www.census.gov>), and click on the American FactFinder® (AFF). AFF gives several easy-to-use options for accessing SF 2:

- *Quick Tables* gives you a set of key variables for areas as small as census tracts.
- *Geographic Comparison Tables* lets you see how your state, city, county, metro area, or census tract stacks up in comparison to others according to key variables.
- *Detailed Tables* gives you direct access to all the SF 2 tables. As the second screen of Figure 2 shows, you must go to the "Change Selections" option in the blue bar to select the SF 2 race or ethnic group (for example, Cubans) for which you wish to repeat a table. Once you click on "Race or Ethnic Groups," American FactFinder® allows you to pick the group.

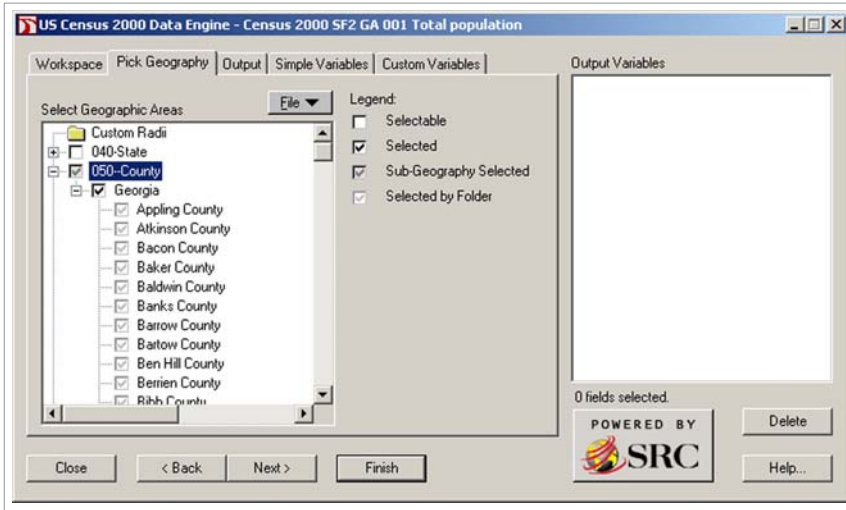
One special feature to note in AFF: the "geo within geo" button lets you select all areas of a certain type and display them for the entire nation, state, county, and so forth, provided the total doesn't exceed 7,000 entities. You should use this option, if for example, you need national level summaries of counties, metro areas, or American Indian areas. This feature would allow you to display all tracts in a state or county.

AFF also gives you access to the technical documentation and other reference information to assist you in using the file. Be sure to look at the Summary File 2 overview page (<http://www.census.gov/Press-Release/www/2001/sumfile2.html>) for links to the documentation, the File Transfer Protocol (FTP) site, and other useful pages. Especially valuable on this page is a search tool that lets you access Census 2000 and related data for each state. If your focus is on just one state, this is the page to consult.

### Data for the 108th Congressional Districts

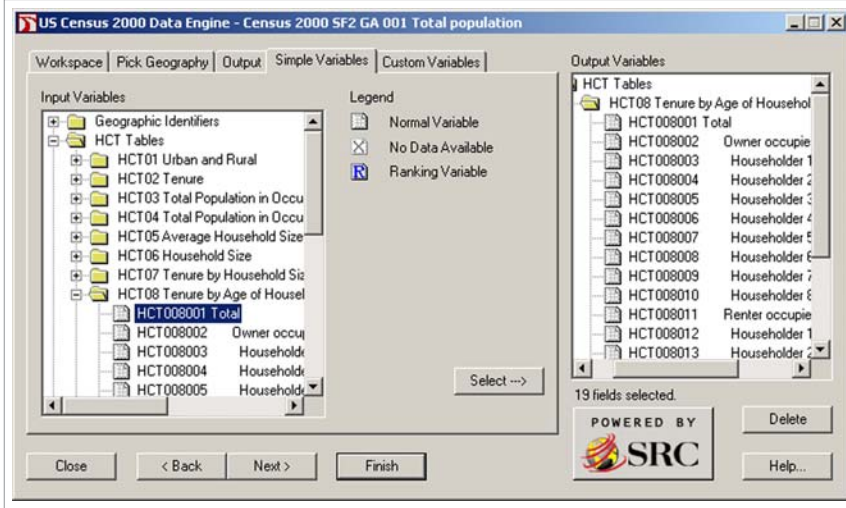
The Census Bureau has issued comparable demographic data for the Congressional Districts of the 108th Congress. Like the Census 2000 summary files, these data are available online in the American FactFinder® and in ASCII format via FTP and on DVD (\$70) from the Customer Services Center. There is substantial race and ethnic detail in these data, but no repetition of tables for various race and ethnic groups, as in SF 2. For more information on these data, go to <http://www.census.gov/Press-Release/www/2003/108th.html>.

Figure 3.  
Powerful Software on SF 2 CD-ROMs and DVDs Lets You Control Retrieval and Output



First, you pick the geography you want – in this case, all counties in Georgia – and then the software prompts you to pick a table – in this case, Table HCT8, Tenure (i.e., owner or renter status) by Household Size for Housing Units where the Householders were “Korean Alone” (that is, where the householders selected just one race – “Korean”).

Screen 1 shows the selection of geography on the CD-ROM version of SF 2 for Georgia; screen 2, the selection of the data variables. You save the tabulation and open it up in a spreadsheet or data base application.



SF 2 shows a table for a race or Hispanic/Latino group, only when the area contains 100 or more people of that race or Hispanic/Latino group. Consequently, SF 2 allows you to display Table HCT8 for the 23 counties in Georgia (out of 159 counties) where the “Korean alone” population is 100 or more. The tabulation at the right shows total occupied housing units (HCT00700), total owner-occupied units (HCT007001), followed by a breakdown for units with households of varying sizes. The same breakdown is shown for renter-occupied units.

|    | A               | B     | C        | D         | E         | F         | G         | H         | I         | J         | K         |
|----|-----------------|-------|----------|-----------|-----------|-----------|-----------|-----------|-----------|-----------|-----------|
| 1  | NAME            | KEY   | HCT00800 | HCT008001 | HCT008002 | HCT008003 | HCT008004 | HCT008005 | HCT008006 | HCT008007 | HCT008008 |
| 2  | Barrow County   | 13013 | 35       | 20        | 0         | 2         | 4         | 4         | 4         | 3         | 3         |
| 3  | Bibb County     | 13021 | 73       | 34        | 1         | 5         | 11        | 5         | 7         | 4         | 0         |
| 4  | Catoosa County  | 13047 | 36       | 23        | 0         | 2         | 5         | 9         | 6         | 1         | 0         |
| 5  | Chatham County  | 13051 | 144      | 66        | 0         | 12        | 20        | 20        | 11        | 3         | 0         |
| 6  | Cherokee County | 13057 | 47       | 34        | 0         | 7         | 15        | 4         | 6         | 2         | 0         |
| 7  | Clarke County   | 13059 | 230      | 16        | 2         | 3         | 4         | 0         | 6         | 1         | 0         |
| 8  | Clayton County  | 13063 | 155      | 100       | 1         | 15        | 20        | 29        | 27        | 5         | 2         |
| 9  | Cobb County     | 13067 | 1003     | 583       | 7         | 77        | 195       | 176       | 99        | 28        | 1         |
| 10 | Columbia County | 13073 | 131      | 101       | 2         | 11        | 39        | 33        | 14        | 2         | 0         |
| 11 | DeKalb County   | 13089 | 1192     | 336       | 4         | 34        | 72        | 96        | 92        | 34        | 4         |
| 12 | Douglas County  | 13097 | 27       | 14        | 0         | 3         | 5         | 5         | 1         | 0         | 0         |
| 13 | Fayette County  | 13113 | 62       | 49        | 0         | 1         | 12        | 16        | 13        | 6         | 1         |
| 14 | Forsyth County  | 13117 | 36       | 34        | 0         | 7         | 11        | 6         | 6         | 4         | 0         |
| 15 | Fulton County   | 13121 | 1286     | 678       | 9         | 103       | 272       | 162       | 102       | 26        | 2         |
| 16 | Gwinnett County | 13135 | 2728     | 1528      | 21        | 262       | 547       | 399       | 213       | 77        | 8         |
| 17 | Hall County     | 13139 | 28       | 17        | 0         | 2         | 8         | 2         | 3         | 2         | 0         |
| 18 | Henry County    | 13151 | 77       | 65        | 0         | 7         | 25        | 19        | 9         | 5         | 0         |
| 19 | Houston County  | 13153 | 48       | 30        | 0         | 5         | 9         | 8         | 5         | 3         | 0         |
| 20 | Liberty County  | 13179 | 92       | 46        | 1         | 4         | 21        | 14        | 6         | 0         | 0         |
| 21 | Lowndes County  | 13185 | 35       | 12        | 0         | 1         | 4         | 7         | 0         | 0         | 0         |
| 22 | Muscogee County | 13215 | 250      | 140       | 3         | 8         | 28        | 47        | 37        | 16        | 1         |
| 23 | Richmond County | 13245 | 245      | 131       | 3         | 7         | 28        | 49        | 33        | 9         | 2         |
| 24 | Rockdale County | 13247 | 56       | 22        | 0         | 3         | 9         | 8         | 1         | 1         | 0         |

## Download Data From American FactFinder® or File Transfer Protocol (FTP)

Every AFF data page has a "Download" tab through which you can download these files as comma delimited (.csv), tab-delimited (.lst), or rich text format (.rtf) files either directly or indirectly into a spreadsheet program like Excel or Lotus or a database program like Access or dBase. AFF also lets you transpose columns and rows (i.e., make rows into columns and vice versa) and input the data into a database format with labels or no labels, but just the comma-delimited numbers.

In addition, ASCII files in a zipped format are available free on the Internet via File Transfer Protocol (FTP). Note that these files do not come with viewing software. Given the size of the files, the speed of your modem and Internet connection, downloading a file may be a time-consuming process. If you plan on downloading or using the ASCII files, be sure to consult the "Read Me" file on the Internet ([http://www2.census.gov/census\\_2000/datasets/Summary\\_File\\_2/OREADME\\_SF2.txt](http://www2.census.gov/census_2000/datasets/Summary_File_2/OREADME_SF2.txt)).

We have developed a helpful set of instructions for downloading the ASCII files into a database application (<http://www.census.gov/support/SF2ASCII.html>).

Note: The Census Bureau also released a supplement to SF 2, available in ASCII via FTP, showing sex by age for the total population. This tabulation is identical to PCT5 (see Appendix 1) except, that PCT5 shows sex by age for householders, rather than persons in households.

Go to [http://www2.census.gov/census\\_2000/datasets/Summary\\_File\\_2\\_Supplement/ftp://ftp2.census.gov/census\\_2000/datasets/Summary\\_File\\_2\\_Supplement/](http://www2.census.gov/census_2000/datasets/Summary_File_2_Supplement/ftp://ftp2.census.gov/census_2000/datasets/Summary_File_2_Supplement/) for access to the files and more information.

## Buy SF 2 on CD-ROM or DVD

If you plan to make heavy use of SF 2 or to analyze data for more than a few variables, you may want to consider purchasing the SF 2 data on CD-ROM or DVD. You may purchase discs from the Census Bureau's Customer Services Center at 301-763-INFO (4636).

The files on disc come with proprietary software that operates on computers with Microsoft Windows 95/98/2000/NT/ME/XP operating systems. The software provides an expandable hierarchical menu or equivalent for the selection of one or more geographic areas. The user software supports selection of individual data items, complete data tables, and geographic identifiers to include in output files. Figure 3 shows how to download and display SF 2 data from the DVD containing the complete set of state files.

Users who want both the individual state files and the national files will have to buy them separately – the state files come on one DVD or on separate CD-ROMs for each state; the national file is available on one DVD. Most users will find that the U.S. Summary DVD (containing all the state files) will handle their needs.

## Census 2000 Maps

Particularly if you are planning to use data for census tracts, you'll need Census 2000 Maps, available electronically on the Internet (in .pdf) and on paper:

**Block Maps.** These are detailed maps (36" x 33") showing all levels of geography down to the level of census blocks. They can be purchased from the Customer Services Center in map sets for counties, cities, minor civil divisions, and other areas. These detailed street maps show the boundaries of blocks and tracts and all larger geographic areas. To view these maps online, go to [http://www.census.gov/geo/www/maps/CP\\_MapProducts.htm](http://www.census.gov/geo/www/maps/CP_MapProducts.htm).

**Census Tract Outline Maps.** Far less detailed than the block maps, the outline maps (36" x 33") show the boundaries of census tracts, ideal for most users. They are available for sale by county from the Customer Services Center. To view these maps online, go to [http://www.census.gov/geo/www/maps/CP\\_MapProducts.htm](http://www.census.gov/geo/www/maps/CP_MapProducts.htm).

## Call to Order CD-ROMs, DVDs, and Maps!

To order CD-ROMs or DVDs, you can use the order form in this profile or contact the Customer Services Center at 301-763-INFO (4636). For maps, contact the Customer Services Center.

Need to keep up to date on other Census 2000 files? You can subscribe to the *Census Product Update*, a biweekly e-mail and online newsletter, available free from the Census Bureau. Come to <http://www.census.gov/mp/www/cpu.html> to sign up or to view the newsletter online.

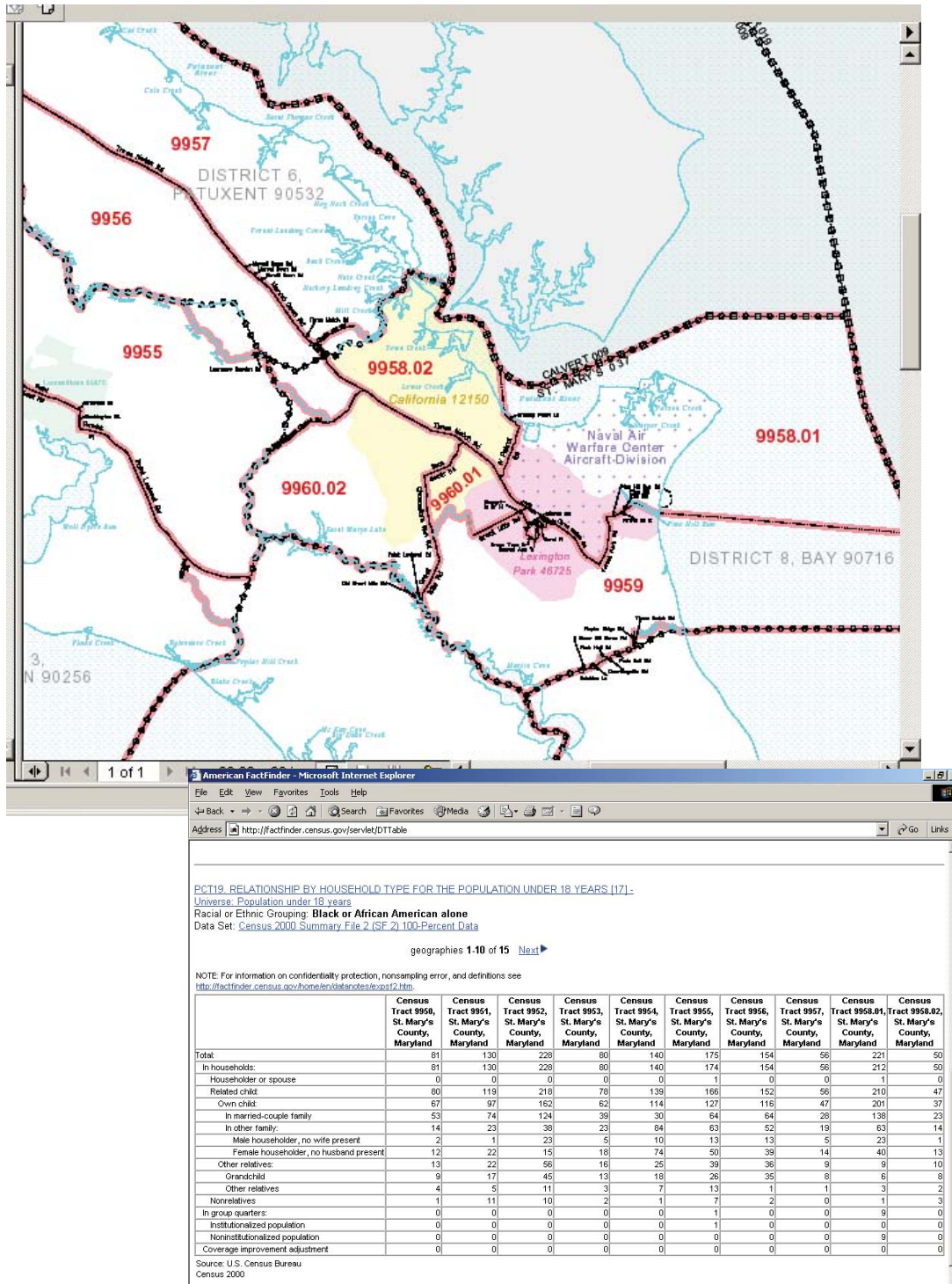
## For More Information

- Visit the Census Bureau's Internet site at <http://www.census.gov> or call our Customer Services Center at 301-763-INFO (4636).
- Visit your local library. Many major university and public libraries participate in the Federal Depository Library Program and receive copies of Census Bureau reports. For a complete list, visit [http://www.access.gpo.gov/su\\_docs/locators/findlibs/index.html](http://www.access.gpo.gov/su_docs/locators/findlibs/index.html).
- Call or visit one of 1,800 state and local planning groups, libraries, chambers of commerce, and others that participate in a Census Bureau data center program. For a complete list of data centers, visit <http://www.census.gov/dmd/www/groupcnr.htm/>.
- Call or visit a Census Bureau Regional Office. A complete listing can be found at <http://www.census.gov/field/www/>.

## Census Tract Outline Maps Help Users Plot Out Data in SF 2

Users often prefer to work with data at the level of census tracts since these areas allow them to study trends within communities. To do this, you need to know the boundaries of the tracts – where one ends and another begins. Users can purchase paper copies of these maps from the Census Bureau's Customer Services Center or print page-sized versions from the Census Bureau's Web site ([http://www.census.gov/geo/www/maps/CP\\_MapProducts.htm](http://www.census.gov/geo/www/maps/CP_MapProducts.htm)).

Below, we show detail from the tract map for St. Mary's County, Maryland, along with a table on "Relationship by Household Type for the Population Under 18 Years" (PCT19) from SF 2 repeated for the Black or African American population.



**Appendix 1.**  
**Summary File 2 Table Titles**

*Note: Number in brackets refers to number of data cells in table.*

Population Subjects

PCT1. TOTAL POPULATION [1]  
Universe: Total population

PCT2. URBAN AND RURAL [6]  
Universe: Total population

PCT3. SEX BY AGE [209]  
Universe: Total population

PCT4. MEDIAN AGE BY SEX [3]  
Universe: Total population

PCT5. SEX BY AGE [49]  
Universe: Population in households

PCT6. HOUSEHOLDS [1]  
Universe: Households

PCT7. POPULATION IN HOUSEHOLDS [1]  
Universe: Population in households

PCT8. AVERAGE HOUSEHOLD SIZE [1]  
Universe: Households

PCT9. HOUSEHOLD SIZE, HOUSEHOLD TYPE, AND PRESENCE OF OWN CHILDREN [19]  
Universe: Households

PCT10. HOUSEHOLDS BY PRESENCE OF PEOPLE UNDER 18 YEARS BY HOUSEHOLD TYPE [19]  
Universe: Households

PCT11. HOUSEHOLDS BY AGE OF HOUSEHOLDER BY HOUSEHOLD TYPE (INCLUDING LIVING ALONE) BY PRESENCE OF OWN CHILDREN [31]  
Universe: Households

PCT12. HOUSEHOLD TYPE BY AGE OF HOUSEHOLDER [19]  
Universe: Households

PCT13. HOUSEHOLDS BY PRESENCE OF PEOPLE 60 YEARS AND OVER, HOUSEHOLD SIZE, AND HOUSEHOLD TYPE [11]  
Universe: Households

PCT14. HOUSEHOLDS BY PRESENCE OF PEOPLE 65 YEARS AND OVER, HOUSEHOLD SIZE, AND HOUSEHOLD TYPE [11]  
Universe: Households

PCT15. HOUSEHOLDS BY PRESENCE OF PEOPLE 75 YEARS AND OVER, HOUSEHOLD SIZE, AND HOUSEHOLD TYPE [11]  
Universe: Households

PCT16. HOUSEHOLDS BY PRESENCE OF NONRELATIVES [3]  
Universe: Households

PCT17. HOUSEHOLD TYPE BY HOUSEHOLD SIZE [16]  
Universe: Households

PCT18. RELATIONSHIP BY HOUSEHOLD TYPE (INCLUDING LIVING ALONE) [27]  
Universe: Total population

PCT19. RELATIONSHIP BY HOUSEHOLD TYPE FOR THE POPULATION UNDER 18 YEARS [17]  
Universe: Population under 18 years

PCT20. RELATIONSHIP BY AGE FOR THE POPULATION UNDER 18 YEARS [46]  
Universe: Population under 18 years

PCT21. RELATIONSHIP BY HOUSEHOLD TYPE (INCLUDING LIVING ALONE) FOR THE POPULATION 65 YEARS AND OVER [22]  
Universe: Population 65 years and over

PCT22. UNMARRIED-PARTNER HOUSEHOLDS AND SEX OF PARTNERS [7]  
Universe: Households

PCT23. NONRELATIVES BY HOUSEHOLD TYPE [13]  
Universe: Nonrelatives

PCT24. FAMILIES [1]  
Universe: Families

PCT25. POPULATION IN FAMILIES [1]  
Universe: Population in families

PCT26. AVERAGE FAMILY SIZE [1]  
Universe: Families

PCT27. FAMILY TYPE BY PRESENCE AND AGE OF OWN CHILDREN [20]  
Universe: Families

PCT28. FAMILY TYPE BY PRESENCE AND AGE OF RELATED CHILDREN [20]  
Universe: Families

PCT29. OWN CHILDREN UNDER 18 YEARS BY FAMILY TYPE AND AGE [20]  
Universe: Own children under 18 years

PCT30. POPULATION SUBSTITUTED [5]  
Universe: Total population

PCT31-36. IMPUTATION TABLES

Housing Topics

HCT1. URBAN AND RURAL [6]  
Universe: Occupied housing units

HCT2. TENURE [3]  
Universe: Occupied housing units

HCT3. TOTAL POPULATION IN OCCUPIED HOUSING UNITS [1]  
Universe: Population in occupied housing units

HCT4. TOTAL POPULATION IN OCCUPIED HOUSING UNITS BY TENURE [3]  
Universe: Population in occupied housing units

HCT5. AVERAGE HOUSEHOLD SIZE OF OCCUPIED HOUSING UNITS BY TENURE [3]  
Universe: Occupied housing units

HCT6. HOUSEHOLD SIZE [8]  
Universe: Occupied housing units

HCT7. TENURE BY HOUSEHOLD SIZE [17]  
Universe: Occupied housing units

HCT8. TENURE BY AGE OF HOUSEHOLDER [19]  
Universe: Occupied housing units

HCT9. TENURE BY HOUSEHOLD TYPE (INCLUDING LIVING ALONE) BY AGE OF HOUSEHOLDER [69]  
Universe: Occupied housing units

HCT10. HOUSING UNITS SUBSTITUTED [3]  
Universe: Occupied housing units

HCT11. IMPUTATION OF TENURE [5]  
Universe: Occupied housing units



## Appendix 2. Race and Ethnic Groups

### Race Groups

White alone

White alone or in combination with one or more other races

Black/African American alone

Black/African American alone or in combination with one or more other races

American Indian and Alaska Native (AIAN) alone  
American Indian alone  
Alaska Native alone

American Indian and Alaska Native (AIAN) alone or in combination with one or more other races  
American Indian alone or in any combination  
Alaska Native alone or in any combination

Asian alone

Asian Indian alone  
Bangladeshi alone  
Cambodian alone  
Chinese alone  
Chinese, except Taiwanese, alone  
Taiwanese alone  
Filipino alone  
Hmong alone  
Indonesian alone  
Japanese alone  
Korean alone  
Laotian alone  
Malaysian alone  
Pakistani alone  
Sri Lankan alone  
Thai alone  
Vietnamese alone  
Other specified Asian alone

Asian alone or in combination with one or more other races

Asian Indian alone or in any combination  
Bangladeshi alone or in any combination  
Cambodian alone or in any combination  
Chinese alone or in any combination  
Chinese, except Taiwanese, alone or in any combination  
Taiwanese alone or in any combination  
Filipino alone or in any combination  
Hmong alone or in any combination  
Indonesian alone or in any combination

Japanese alone or in any combination  
Korean alone or in any combination  
Laotian alone or in any combination  
Malaysian alone or in any combination  
Pakistani alone or in any combination  
Sri Lankan alone or in any combination  
Thai alone or in any combination  
Vietnamese alone or in any combination  
Other specified Asian alone or in any combination

Native Hawaiian and Other Pacific Islander (NHPI) alone  
Polynesian alone  
Native Hawaiian alone  
Samoan alone  
Tongan alone  
Micronesian alone  
Guamanian or Chamorro alone  
Melanesian alone  
Fijian alone  
Other specified Pacific Islander alone  
Native Hawaiian and Other Pacific Islander (NHPI) alone or in combination with one or more other races  
Polynesian alone or in any combination  
Native Hawaiian alone or in any combination  
Samoan alone or in any combination  
Tongan alone or in any combination  
Micronesian alone or in any combination  
Guamanian or Chamorro alone or in any combination  
Melanesian alone or in any combination  
Fijian alone or in any combination  
Other specified Pacific Islander alone or in any combination

Some other race alone

Some other race alone or in combination with one or more other races

Two or More Races

Two races including Some other race

Two races excluding Some other race, and three or more races

Two or more races excluding Some other race

Three or more races

Two Races

White; Black/African American

White; American Indian and Alaska Native (AIAN)

White; Asian

White; Native Hawaiian and Other Pacific Islander (NHPI)

White; Some other race

Black/African American; American Indian and Alaska Native (AIAN)

Black/African American; Asian

Black/African American; Native Hawaiian and Other Pacific Islander (NHPI)

Black/African American; Some other race

American Indian and Alaska Native (AIAN); Asian

American Indian and Alaska Native (AIAN); Native Hawaiian and Other Pacific Islander (NHPI)

American Indian and Alaska Native (AIAN); Some other race

Asian; Native Hawaiian and Other Pacific Islander (NHPI)

Asian; Some other race

Native Hawaiian and Other Pacific Islander (NHPI); Some other race

Three Races

White; Black/African American; American Indian and Alaska Native (AIAN)

White; Black/African American; Asian

White; Black/African American; Native Hawaiian and Other Pacific Islander (NHPI)

White; Black/African American; Some other race

White; American Indian and Alaska Native (AIAN); Asian

White; American Indian and Alaska Native (AIAN); Native Hawaiian and Other Pacific Islander (NHPI)

White; American Indian and Alaska Native (AIAN); Some other race

White; Asian; Native Hawaiian and Other Pacific Islander (NHPI)

White; Asian; Some other race

|   |  |  |
|---|--|--|
| White; Native Hawaiian and Other Pacific Islander (NHPI); Some other race   | Native (AIAN); Asian; Native Hawaiian and Other Pacific Islander (NHPI)  | Six Races  |
| Black/African American; American Indian and Alaska Native (AIAN); Asian   | White; American Indian and Alaska Native (AIAN); Asian; Some other race  | White; Black/African American; American Indian and Alaska Native (AIAN); Asian; Native Hawaiian and Other Pacific Islander (NHPI); Some other race |
| Black/African American; American Indian and Alaska Native (AIAN); Native Hawaiian and Other Pacific Islander (NHPI) | White; American Indian and Alaska Native (AIAN); Native Hawaiian and Other Pacific Islander (NHPI); Some other race                  | American Indian and Alaska Native Tribes   |
| Black/African American; American Indian and Alaska Native (AIAN); Some other race                                   | White; Asian; Native Hawaiian and Other Pacific Islander (NHPI); Some other race   | Alaskan Athabascan alone   |
| Black/African American; Asian; Native Hawaiian and Other Pacific Islander (NHPI)                                    | Black/African American; American Indian and Alaska Native (AIAN); Asian; Native Hawaiian and Other Pacific Islander (NHPI)           | Alaskan Athabascan alone or in any combination   |
| Black/African American; Asian; Some other race  | Black/African American; American Indian and Alaska Native (AIAN); Asian; Some other race   | Aleut alone  |
| Black/African American; Native Hawaiian and Other Pacific Islander (NHPI); Some other race                          | Black/African American; American Indian and Alaska Native (AIAN); Asian; Some other race   | Aleut alone or in any combination  |
| American Indian and Alaska Native (AIAN); Asian; Native Hawaiian and Other Pacific Islander (NHPI)                  | Black/African American; American Indian and Alaska Native (AIAN); Native Hawaiian and Other Pacific Islander (NHPI); Some other race | Apache alone   |
| American Indian and Alaska Native (AIAN); Asian; Some other race  | Black/African American; American Indian and Alaska Native (AIAN); Native Hawaiian and Other Pacific Islander (NHPI); Some other race | Apache alone or in any combination   |
| American Indian and Alaska Native (AIAN); Native Hawaiian and Other Pacific Islander (NHPI); Some other race        | Black/African American; Asian; Native Hawaiian and Other Pacific Islander (NHPI); Some other race                                    | Blackfeet alone  |
| Asian; Native Hawaiian and Other Pacific Islander (NHPI); Some other race   | American Indian and Alaska Native (AIAN); Asian; Native Hawaiian and Other Pacific Islander (NHPI); Some other race                  | Blackfeet alone or in any combination  |
|   |  | Cherokee alone   |
|   |  | Cherokee alone or in any combination   |
|   |  | Cheyenne alone   |
|   |  | Cheyenne alone or in any combination   |
|   |  | Chickasaw alone  |
|   |  | Chickasaw alone or in any combination  |
|   |  | Chippewa alone   |
|   |  | Chippewa alone or in any combination   |
|   |  | Choctaw alone  |
|   |  | Choctaw alone or in any combination  |
|   |  | Colville alone   |
|   |  | Colville alone or in any combination   |
|   |  | Comanche alone   |
|   |  | Comanche alone or in any combination   |
|   |  | Cree alone   |
|   |  | Cree alone or in any combination   |
|   |  | Creek alone  |
|   |  | Creek alone or in any combination  |
|   |  | Crow alone   |
|   |  | Crow alone or in any combination   |
|   |  | Delaware alone   |
|   |  | Delaware alone or in any combination   |
|   |  | Eskimo alone   |
|   |  | Eskimo alone or in any combination   |

|   |   |  |
|---|---|--|
| Houma alone                                       | Ute alone   | Asian alone, not Hispanic or Latino  |
| Houma alone or in any combination                 | Ute alone or in any combination   | Asian alone or in combination with one or more other races, not Hispanic or Latino Native Hawaiian and Other Pacific Islander (NHPI) alone, not Hispanic or Latino |
| Iroquois alone                                    | Yakama alone  | Native Hawaiian and Other Pacific Islander (NHPI) alone or in combination with one or more other races, not Hispanic or Latino                                     |
| Iroquois alone or in any combination              | Yakama alone or in any combination  | Some other race alone, not Hispanic or Latino  |
| Kiowa alone                                       | Yaqui alone   | Some other race alone or in combination with one or more other races, not Hispanic or Latino   |
| Kiowa alone or in any combination                 | Yaqui alone or in any combination   | Two or more races, not Hispanic or Latino  |
| Latin American Indian alone                       | Yuman alone   |  |
| Latin American Indian alone or in any combination | Yuman alone or in any combination   |  |
| Lumbee alone                                      | Hispanic or Latino  |  |
| Lumbee alone or in any combination                | Hispanic or Latino (of any race)  |  |
| Menominee alone                                   | Mexican   |  |
| Menominee alone or in any combination             | Puerto Rican  |  |
| Navajo alone                                      | Cuban   |  |
| Navajo alone or in any combination                | Other Hispanic or Latino  |  |
| Osage alone                                       | Dominican (Dominican Republic)  |  |
| Osage alone or in any combination                 | Central American  |  |
| Ottawa alone                                      | Costa Rican   |  |
| Ottawa alone or in any combination                | Guatemalan  |  |
| Paiute alone                                      | Honduran  |  |
| Paiute alone or in any combination                | Nicaraguan  |  |
| Pima alone  | Panamanian  |  |
| Pima alone or in any combination                  | Salvadoran  |  |
| Potawatomi alone                                  | South American  |  |
| Potawatomi alone or in any combination            | Argentinian   |  |
| Pueblo alone                                      | Bolivian  |  |
| Pueblo alone or in any combination                | Chilean   |  |
| Puget Sound Salish alone                          | Colombian   |  |
| Puget Sound Salish alone or in any combination    | Ecuadorian  |  |
| Seminole alone                                    | Paraguayan  |  |
| Seminole alone or in any combination              | Peruvian  |  |
| Shoshone alone                                    | Uruguayan   |  |
| Shoshone alone or in any combination              | Venezuelan  |  |
| Sioux alone                                       | Spaniard  |  |
| Sioux alone or in any combination                 | All other Hispanic or Latino  |  |
| Tlingit-Haida alone                               | Not Hispanic or Latino  |  |
| Tlingit-Haida alone or in any combination         | White alone, not Hispanic or Latino   |  |
| Tohono O'Odham alone                              | White alone or in combination with one or more other races, not Hispanic or Latino                                    |  |
| Tohono O'Odham alone or in any combination        | Black/African American alone, not Hispanic or Latino  |  |
|   | Black/African American alone or in combination with one or more other races, not Hispanic or Latino                   |  |
|   | American Indian and Alaska Native (AIAN) alone, not Hispanic or Latino  |  |
|   | American Indian and Alaska Native (AIAN) alone or in combination with one or more other races, not Hispanic or Latino |  |

### Race and Hispanic Data Plus in Summary File 4

Users who need the kind of race and Hispanic data you can generate from SF 2 also should consider using Summary File 4. SF 4 has long form data (on subjects such as education, citizenship, country of origin, language spoken, poverty status, shelter costs, occupants per room, and vehicles available) in 323 tables that can be repeated for all the race and Hispanic groups shown in Appendix 2, plus 86 ancestry groups. In all, tables can be repeated for 335 groups — provided the groups meet certain population thresholds.

If you want to find out the average household size or median household income where the household's ancestry is Jordanian or Polish in a county in New Jersey, this is the file to consult. Like all the earlier summary files, this file is available by state online in the American FactFinder® or on our FTP site (ASCII) and on CD-ROM and DVD sold by the Customer Services Center. For more on SF 4, go to (<http://www.census.gov/Press-Release/www/2003/SF4.html>).

# Order Form

Yes! I want the Census 2000 Summary File 2. Please send me the CD-ROMs and/or DVDs that I have chosen below. I have enclosed \$ \_\_\_\_\_ (check or money order only) for my selection or provided credit card information below.

Thanks for your order!

Name: \_\_\_\_\_ Date: \_\_\_\_\_

Company: \_\_\_\_\_

Address: \_\_\_\_\_  
(City, state, ZIP Code) (No P.O. boxes)

Phone: ( ) \_\_\_\_\_ Fax: ( ) \_\_\_\_\_

E-mail address: \_\_\_\_\_

| States (1) | Number of DVD, CD-ROM (per state) (2) | Price (per set) (3) | Quantity (4) | Total (5) | States (1) | Number of DVD, CD-ROM (per state) (2) | Price (per set) (3) | Quantity (4) | Total (5) |
|------------|---------------------------------------|---------------------|--------------|-----------|------------|---------------------------------------|---------------------|--------------|-----------|
|------------|---------------------------------------|---------------------|--------------|-----------|------------|---------------------------------------|---------------------|--------------|-----------|

## DVDs

|                  |   |                  |  |    |
|------------------|---|------------------|--|----|
| U.S. Summary     |   | <i>Best Buy!</i> |  |    |
| Software Version | 1 | \$70.00          |  | \$ |
| ASCII Version    | 1 | \$70.00          |  |    |
| National File    |   |                  |  |    |
| Software Version | 1 | \$70.00          |  |    |

## CD-ROMs (Cont.)

|                |   |         |  |    |
|----------------|---|---------|--|----|
| Massachusetts  | 1 | \$50.00 |  | \$ |
| Michigan       | 1 | 50.00   |  |    |
| Minnesota      | 1 | 50.00   |  |    |
| Mississippi    | 1 | 50.00   |  |    |
| Missouri       | 1 | 50.00   |  |    |
| Montana        | 1 | 50.00   |  |    |
| Nebraska       | 1 | 50.00   |  |    |
| Nevada         | 1 | 50.00   |  |    |
| New Hampshire  | 1 | 50.00   |  |    |
| New Jersey     | 1 | 50.00   |  |    |
| New Mexico     | 1 | 50.00   |  |    |
| New York       | 1 | 50.00   |  |    |
| North Carolina | 1 | 50.00   |  |    |
| North Dakota   | 1 | 50.00   |  |    |
| Ohio           | 1 | 50.00   |  |    |
| Oklahoma       | 1 | 50.00   |  |    |
| Oregon         | 1 | 50.00   |  |    |
| Pennsylvania   | 1 | 50.00   |  |    |
| Rhode Island   | 1 | 50.00   |  |    |
| South Carolina | 1 | 50.00   |  |    |
| South Dakota   | 1 | 50.00   |  |    |
| Tennessee      | 1 | 50.00   |  |    |
| Texas          | 1 | 50.00   |  |    |
| Utah           | 1 | 50.00   |  |    |
| Vermont        | 1 | 50.00   |  |    |
| Virginia       | 1 | 50.00   |  |    |
| Washington     | 1 | 50.00   |  |    |
| West Virginia  | 1 | 50.00   |  |    |
| Wisconsin      | 1 | 50.00   |  |    |
| Wyoming        | 1 | 50.00   |  |    |
| Puerto Rico    | 1 | 50.00   |  |    |

## CD-ROMs (Software Version)

|                      |    |            |  |    |
|----------------------|----|------------|--|----|
| All States Kit       | 51 | \$1,300.00 |  | \$ |
| Alabama              | 1  | 50.00      |  |    |
| Alaska               | 1  | 50.00      |  |    |
| Arizona              | 1  | 50.00      |  |    |
| Arkansas             | 1  | 50.00      |  |    |
| California           | 1  | 50.00      |  |    |
| Colorado             | 1  | 50.00      |  |    |
| Connecticut          | 1  | 50.00      |  |    |
| Delaware             | 1  | 50.00      |  |    |
| District of Columbia | 1  | 50.00      |  |    |
| Florida              | 1  | 50.00      |  |    |
| Georgia              | 1  | 50.00      |  |    |
| Hawaii               | 1  | 50.00      |  |    |
| Idaho                | 1  | 50.00      |  |    |
| Illinois             | 1  | 50.00      |  |    |
| Indiana              | 1  | 50.00      |  |    |
| Iowa                 | 1  | 50.00      |  |    |
| Kansas               | 1  | 50.00      |  |    |
| Kentucky             | 1  | 50.00      |  |    |
| Louisiana            | 1  | 50.00      |  |    |
| Maine                | 1  | 50.00      |  |    |
| Maryland             | 1  | 50.00      |  |    |

Best Buy: U.S. Summary is the complete SF 2 file with data for all states, the District of Columbia, and Puerto Rico down to the census tract level.

TOTAL \$ \_\_\_\_\_

### METHOD OF PAYMENT (please check one)

Overseas Service — add \$25.00

Check payable to Commerce-Census

9     Census deposit account

Visa, MasterCard, AMEX, or Discover account number:

Expiration date: Month/Year: \_\_\_\_/\_\_\_\_

Name on card: \_\_\_\_\_

Signature: \_\_\_\_\_

To place your order by phone (have your credit card ready) or for further information about SF 2 and other data product, please call our Customer Services Center at 301-763-INFO (4636), fax your order toll-free to 888-249-7295, or access our Web site at <http://www.census.gov> and select "Catalog."

For mail orders only, complete this order form and send it with your payment to: U.S. Department of Commerce  
U.S. Census Bureau (MS 0801)  
P.O. Box 277943, Atlanta, GA 30384-7943