

Census 2000 Data Factsheet

File Transfer Protocol

Census 2000: Downloading Files Through File Transfer Protocol

Through the File Transfer Protocol (FTP), users can download data for a specific state from the U.S. Census Bureau Web site at www.census.gov. This method allows users to download complete state data files (not individual tables) that do not come with viewing software. While the downloading process itself is not particularly complex, inexperienced users may have difficulty formatting the downloaded data and recombining the segmented data files.

Users may also download specific tables generated from American FactFinder® in either spreadsheet or text format.

American FactFinder

It is recommended that only advanced users access data through FTP. For beginning and intermediate users the Census Bureau's online data-retrieval tool, American FactFinder® (AFF), should satisfy most data inquiries. Through AFF, users can access data in customizable, easy-to-read tables. These individual tables can be downloaded, then moved into many popular spreadsheet or database packages.

To download complete state files, click on *Data Sets* on the American FactFinder® page and then *Data Sets available for FTP*, in the lower left-hand area of the page. Or, from the Census Bureau home page, click on *Access Tools* and then *Census 2000 Data Sets* under *Direct File Access*.

Please note these files are available in ASCII comma-delimited format and do not come with viewing software. Given the size of the files, and depending on the speed of your modem and Internet connection, downloading a file may be a time-consuming process. To speed downloading, the files have all been compressed or "zipped." Once you have completed the initial download, decompress or "unzip" the file using a standard zip/unzip software product. We used software accessible for free on the Internet at www.pkunzip.com.

From the main www.census.gov site, click on *Access Tools* and then *Census 2000 Data Sets* under *Direct File Access*.

Direct File Access

- [Census 2000 datasets](#)
- [Browse Public Directories and Files \(HTTP\)](#)
- [Census OUTGOING File Directory \(HTTP\)](#)
- [Census INCOMING File Directory \(HTTP non-employees\)](#)

After opening the *redistricting_file--pl_94-171* folder, scroll down and select the state file you want. In this example, we have selected *Arkansas*.

Current directory is /census_2000/datasets/redistricting_file--pl_94-171

Go to higher level directory

File Structure/	Thu Mar
Alabama/	Wed Mar
Alaska/	Mon Jan
Arizona/	Mon Jan
Arkansas/	Fri Mar
California/	Mon Jan
Colorado/	Mon Mar
Connecticut/	Tue Mar
Delaware/	Wed Mar
District of Columbia/	Mon Jan
Florida/	Mon Jan
Georgia/	Mon Jan

Here, users will note the compressed state files have been segmented to ease loading the files into spreadsheet or database software. Each state file will be divided into three data files: (two-character state abbreviation) 00001.upl.zip and (two-character state abbreviation) 00002.upl.zip contain the data fields, while the (two-character state abbreviation) geo.upl.zip file contains the geographic identifiers for the data fields. Each state file will incorporate three different formats of the identical README file. Users are strongly encouraged to read the contents of this file as it lays out much of the information needed to understand the download process and the structure of the data.

Current directory is /census_2000/datasets/redistricting_file--pl_94-171

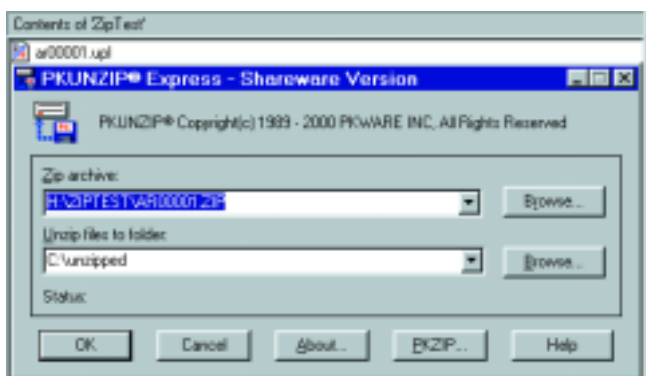
Go to higher level directory

README_01.doc	46 B	Fri Mar
README_01.csv	7 B	Fri Mar
README_01.txt	51 B	Fri Mar
ar00001.upl.zip	1829 B	Fri Mar
ar00002.upl.zip	2718 B	Fri Mar
argeo.upl.zip	4846 B	Fri Mar

Click on [ar00001.upl.zip](#) to begin the download of the compressed or "zipped" file. Users will be prompted to save the file to the local personal computer (PC) drive.



After saving the file to the local PC drive, access the folder it was saved under and double-click on the file to decompress it.



Once the file has been unzipped, you can open the data into a spreadsheet format. These state data files are organized in ASCII comma-delimited format.

	A	B	C	D	E	F	G	H
1	PL	CA	0	1	1	377741	357428	185478
2	PL	CA	0	1	2	409	412	288
3	PL	CA	0	1	3	377308	357012	185208
4	PL	CA	0	1	4	4	4	4
5	PL	CA	0	1	5	377741	357428	185478
6	PL	CA	0	1	6	3481	3412	3219
7	PL	CA	0	1	7	3434	3340	3082
8	PL	CA	0	1	8	3117	3050	2825
9	PL	CA	0	1	9	3814	3613	2690
10	PL	CA	0	1	10	4279	4065	2571
11	PL	CA	0	1	11	877	806	690
12	PL	CA	0	1	12	2388	2159	1806
13	PL	CA	0	1	13	1468	1444	1282
14	PL	CA	0	1	14	274	260	187
15	PL	CA	0	1	15	485	460	351
16	PL	CA	0	1	16	851	815	612
17	PL	CA	0	1	17	2561	2601	2073
18	PL	CA	0	1	18	3144	2976	2288
19	PL	CA	0	1	19	2577	2457	2016
20	PL	CA	0	1	20	4441	4336	3950
21	PL	CA	0	1	21	5011	4864	4518
22	PL	CA	0	1	22	4420	4229	3254
23	PL	CA	0	1	23	5040	4721	3696
24	PL	CA	0	1	24	2909	2735	1892
25	PL	CA	0	1	25	2741	2613	879
26	PL	CA	0	1	26	7821	7020	7501

For More Information About Census 2000 and Census 2000 Data Products:

Get your own copy of reports and CD-ROMs www.census.gov/mp/www/censtore.html

- Census Bureau products are available for sale through our Customer Service Center 301-763-INFO (4636). Visit us on the Web at www.census.gov and order online through our product Catalog.
- Visit your local library. Many major university and public libraries participate in the Federal Depository Library Program and receive copies of Census Bureau reports and discs.
- Call or visit one of 1,800 state and local planning groups, libraries, chambers of commerce, and others that participate in a Census Bureau data center program. For a complete list see: www.census.gov/clo.
- Call or visit the Census Bureau Regional Office nearest you.

Atlanta, GA 30303-2700, 101 Marietta Street, NW, Suite 3200; 404-730-3833; TTD: 404-730-3963; atlanta.pds@census.gov

Boston, MA 02117-9108, 2 Copley Place, Suite 301, P.O. Box 9108; 617-424-0510; boston.regional.office@census.gov

Charlotte, NC 28217-2935, 901 Center Park Drive, Suite 106; 704-344-6144; TTD: 704-344-6548; CLRO_PDSP@census.gov

Chicago, IL 60154, 2255 Enterprise Drive, Suite 5501, Westchester, IL; 708-562-1740; TTD: 708-562-1791; cgcc.partnership@census.gov

Dallas, TX 75247-3724, Park Stemmons Bldg., 8700 N. Stemmons Fwy., Suite 300; 214-655-3050; TTD: 214-640-4434; darcc_partnership@census.gov

Denver, CO 80235-2032, 6900 West Jefferson Ave., Suite 100, Lakewood, CO; 303-969-7750; denver.isp@census.gov

Detroit, MI 48207, 1395 Brewery Park Blvd.; 313-259-1875; TTD: 313-259-5169; detroit_isp@census.gov

Kansas City, KS 66101-2410, Gateway Tower II, 400 State Ave., Suite 600; 913-551-6711; TTD: 913-551-5839; kc.cd@census.gov

Los Angeles, CA 91406-4224, 15350 Sherman Way, Suite 300, Van Nuys, CA; 818-904-6339; TTD: 818-904-6249; largo_esp-Partnership@census.gov

New York, NY 10278-0044, Jacob K. Javits Federal Bldg., 26 Federal Plaza Rm. 37-130; 212-264-4730; TTD: 212-264-3863; ny.pds@census.gov

Philadelphia, PA 19103-2395, 1601 Market Street, 21st Floor; 215-656-7578; TTD: 215-656-7578; philly.pds@census.gov

Seattle, WA 98104-5018, 700 5th Ave., Suite 5100, Key Tower; 206-553-5835; TTD: 206-553-5859; SERO.Partnership.Data.Services@census.gov