



U.S. Department
of Transportation
**Federal Aviation
Administration**

ADMINISTRATOR'S FACT BOOK

March 2011

Produced by:
Assistant Administrator for Financial Services

Website:
[http://www.faa.gov/about/office_org/headquarters_offices/aba/
admin_factbook/](http://www.faa.gov/about/office_org/headquarters_offices/aba/admin_factbook/)

FAA MISSION

To provide the safest, most efficient aerospace system in the world.

FAA VISION

We strive to reach the next level of safety, efficiency, environmental responsibility and global leadership. We are accountable to the American public and our stakeholders.

Table of Contents

FAA Vision and Mission	Inside Front Cover*
FAA Values	Inside Back Cover*

Safety

Aviation Accidents by Type of Operation	3*
Aviation Accident Rates by Type of Operation	4
Airspace Incidents by Incident Type	5*
Airspace Incident Rates by Incident Type	6*
NTSB U.S. Transportation Fatalities	7

FAA Air Traffic

FAA Air Traffic Activity	8*
Air Route Traffic Control Center Activity	9*
50 Busiest FAA Air Traffic Control Towers	10*
25 Busiest Contracted Air Traffic Control Towers	12*
50 Busiest Radar Approach Control Facilities	13*
Automated Flight Service Stations Activity	15*

Airports

Number of U.S. Airports	16
National Airspace Total System Delays	17*

Aircraft

U.S. Air Carrier Activity	18*
U.S. General Aviation and Air Taxi Activity	19*
Aircraft Certification Service	20

Industry Trends

Scheduled U.S. Air Carrier Traffic & Fin. Trends	21
Aviation Forecasts	22*

Commercial Space Transportation

AST Licensed Activity	23*
U.S. Commercial Space Launch Schedule	24*

Airmen

Active Pilots and Nonpilots	25
-----------------------------------	----

FAA Organizational Chart	Center Fold*
--------------------------------	--------------

Table of Contents (cont.)

FAA Regional Boundaries Map	28
-----------------------------------	----

FAA Resources

FAA Employment	29
FAA Percent Minority and Female Employment	30
FAA Major Work Force Employment	31*
Labor Relations	32*
FAA Finances	33*
FAA NAS Operational Facilities	34*

Organization

FAA Officials—Washington Headquarters	35*
FAA Officials—Major Field Organizations	38
FAA Officials—International Area Offices	40
FAA Flight Plan 2009-2013	41

For further information call ABA-1 (202-267-9105)

*Updated this issue

Distribution: A-WXYZE-3; A-FOF-O(STD)

Aviation Accidents by Type of Operation

Type of Operation	Year	Jan	Feb	Mar	Apr	May	Jun	Jul	Aug	Sep	Oct	Nov	Dec	Year Total
Large Air Carrier	2008	2	4	0	1	3	3	2	1	2	1	1	6	26
	2009	2	2	3	2	5	0	4	3	1	4	2	2	30
	2010	0	1	1	5	2	3	1	2	1	1	6	2	25
Commuter	2008	0	0	0	1	0	0	0	3	0	1	1	1	7
	2009	0	1	0	0	0	0	0	0	0	1	0	0	2
	2010	1	2	3	1	0	0	0	0	0	0	0	0	7
Air Taxi	2008	5	4	4	6	6	9	2	4	9	2	2	5	58
	2009	4	3	5	4	4	4	4	4	6	2	2	5	47
	2010	4	4	1	1	0	2	4	3	4	1	0	7	31
General Aviation	2008	71	93	110	140	168	184	184	204	137	105	97	76	1,569
	2009	79	76	107	131	145	166	204	177	141	113	91	49	1,479
	2010	67	68	114	116	137	157	174	185	140	110	66	62	1,396
Rotorcraft*	2008	9	6	14	12	18	18	17	16	12	12	11	8	153
	2009	9	10	16	12	13	15	20	12	19	17	14	4	161
	2010	8	8	8	6	13	17	24	13	16	9	7	5	134

* Part 135 and US registered general aviation, and US-public use rotorcraft accidents.

Note: Preliminary data and subject to change.
As of: 03/07/11

Source: AVP-210
(202) 267-3279

Aviation Accident Rates by Type of Operation

Type of Operation	2006		2007		2008		2009		% Chg 09-08	
	Number	Rate	Number	Rate	Number	Rate	Number	Rate	Number	Rate
Large Air Carriers.....	33	.17	28	.14	28	.14	30	.17	7%	21%
Commuter.....	3	1.00	3	1.00	7	2.40	2	0.69	-33%	-31%
Air Taxi.....	52	1.40	62	1.50	58	1.80	47	1.60	-24%	7%
General Aviation.....	1,523	6.40	1,652	6.90	1,566	6.90	1,474	7.20	-11%	4%

Accident Rates are per 100,000 Flight Hours. Flight hours compiled by FAA.

Note: 2009 data are preliminary.
As of: 06/30/10

Source: NTSB
www.nts.gov/aviation/stats.htm

Airspace Incident Rates by Incident Type

Incident Type									Percent Change	
	2007		2008		2009		2010		2009-2010 (4)	
	Number	Rate	Number	Rate	Number	Rate	Number	Rate	Number	Rate
Operational Errors (1).....	1,316	.86	1,373	.96	1,341	1.02	1,956	1.40	46%	37%
Pilot Deviations (2).....	2,832	1.72	3,335	2.03	2,982	1.81	3,116	1.89	4%	4%
Surface Incidents (3).....	1,125	1.85	1,251	2.19	1,098	2.10	1,218	2.00	11%	-5%

(1) Per 100,000 Facility Activities

(2) Per 100,000 Flight Activities

(3) Per 1,000,000 Airport Operations

(4) Calculations use fifteen decimal places for rates (rounded two places for display).

Note: 2008 data preliminary and subject to change.

Source: ATO-A (IT)

(202) 385-4802

As of: 02/28/11

**National Transportation Safety Board
2008-2009 U.S. Transportation Fatalities**

	2009 ¹	2008
Highway		
Passenger cars	13,095	14,646
Light Trucks and Vans	10,287	10,816
Pedestrians	4,092	4,414
Motorcycles	4,462	5,312
Pedalcycles ²	630	718
Medium and heavy trucks	503	682
Buses	26	67
All Other ³	713	768
Total.....	33,808	37,423
Grade Crossings ⁴	(245)	(289)
Rail		
Intercity ⁵		
Trespassers and nontrespassers ⁶	500	526
Employees and contractors	20	30
Passengers on trains	3	24
Light, heavy, and commuter rail ⁷	228	201
Total.....	751	781
Marine		
Recreational Boating	736	709
Cargo Transport	19	17
Commercial fishing ⁸	49	43
Commercial Passengers	13	14
Total.....	817	783
Aviation		
General Aviation	471	494
Airlines	52	3
Air Taxi	11	69
Commuter	0	0
Foreign/Unregistered ⁹	4	8
Total.....	538	574
Pipeline		
Gas	10	6
Liquids	4	2
Total.....	14	8
GRAND TOTAL.....	35,928	39,569

¹ Numbers for 2009 are preliminary estimates. Aviation data from NTSB, marine data from Department of Homeland Security, all other data from DOT. ² Includes bicycles or other cycles.
³ Includes vehicle nonoccupants other than pedestrians and occupant fatalities in other vehicle types except farm or construction equipment. ⁴ Grade crossing fatalities are not counted as a separate category for determining the grand total because they are included in the highway and rail categories, as appropriate. ⁵ Data reported to Federal Rail Administration (FRA). ⁶ Includes persons on railroad property with and without permission. Does not include motor vehicle occupants killed at grade crossings. ⁷ Data reported to the Federal Transit Administration (FTA). Fatalities for commuter rail operations may also be reported to the FRA and may be included in the intercity railroad fatalities. ⁸ Refers to only operational fatalities. ⁹ Includes non-U.S. registered aircraft involved in accidents in the U.S.

Air Traffic

FAA Air Traffic Activity (In Thousands)

Aircraft Handled by	Jan-Dec 2010*	Jan-Dec 2009
FAA ARTCC's		
Air Carrier.....	22,495	22,323
Air Taxi.....	8,729	8,454
General Aviation.....	6,611	6,285
Military.....	3,007	2,964
TOTAL...	40,842	40,026
Airport Operations Logged by FAA Towers		
Air Carrier.....	12,464	12,484
Air Taxi.....	8,012	8,027
General Aviation.....	15,314	15,982
Military.....	1,499	1,472
TOTAL...	37,289	37,965
Airport Operations (Contracted)		
Air Carrier.....	259	246
Air Taxi.....	1,424	1,381
General Aviation.....	11,161	11,511
Military.....	1,144	1,106
TOTAL...	13,988	14,244
TRACON Operations Logged by FAA Towers		
Air Carrier.....	13,157	13,213
Air Taxi.....	9,517	9,524
General Aviation.....	13,873	13,953
Military.....	2,435	2,398
TOTAL...	38,982	39,088
Flight Services Logged by: **	Jan-Dec 2010*	Jan-Dec 2009
Flight Service Stations.....	672	642
Automated Flight Service Stations.....	7,266	8,498
TOTAL...	7,938	9,140

*Preliminary
As of: 01/20/11
**As of: 01/20/11

Source: APO-130
(202) 267-3350
ATO-A/AJA
(202) 385-4734

Air Route Traffic Control Center Activity

CY 2009 Rank	Center	Aircraft Handled (000's)	
		Jan-Dec 2010*	Jan-Dec 2009
1	Atlanta, GA.....	2,803	2,779
2	New York, NY.....	2,753	2,708
3	Leesburg, VA. (DC).....	2,577	2,572
4	Chicago, IL.....	2,413	2,328
5	Miami, FL.....	2,327	2,228
6	Cleveland, OH.....	2,226	2,179
7	Jacksonville, FL.....	2,238	2,151
8	Memphis, TN.....	2,082	2,057
9	Indianapolis, IN.....	1,959	1,972
10	Los Angeles, CA.....	1,955	1,957
11	Houston, TX.....	1,992	1,952
12	Fort Worth, TX.....	1,956	1,907
13	Minneapolis, MN.....	1,848	1,805
14	Nashua, NH (Boston).....	1,721	1,719
15	Kansas City, KS.....	1,712	1,717
16	Denver, CO.....	1,715	1,664
17	Oakland, CA.....	1,473	1,448
18	Albuquerque, NM.....	1,460	1,446
19	Salt Lake City, UT.....	1,306	1,326
20	Seattle, WA.....	1,163	1,149
21	Anchorage, AK.....	541	507
22	San Juan, PR.....	268	244
23	Guam **.....	249	212

*Preliminary

**Center Radar Approach Control (CERAP)

As of: 01/20/11

Source: APO-130
(202) 267-3350

50 Busiest FAA Airport Traffic Control Towers

Airport Operations (000's)			
CY 2009 Rank	Tower and State	Jan-Dec 2010*	Jan-Dec 2009
1	Hartsfield-Jackson Atl Intl, GA.....	950	970
2	Chicago/O'Hare Int'l., IL.....	883	828
3	Dallas/Ft. Worth Int'l., TX.....	652	639
4	Denver International, CO.....	635	612
5	Los Angeles International, CA.....	576	545
6	Houston/G Bush Intercont'l, TX.....	532	539
7	Las Vegas/McCarran Int'l, NV.....	506	511
8	Charlotte/Douglas Int'l, NC.....	529	509
9	Philadelphia Int'l, PA.....	461	473
10	Phoenix International, AZ.....	449	457
11	Minneapolis-St. Paul Int'l, MN.....	436	433
12	Detroit Metro Wayne Co., MI.....	453	433
13	John F. Kennedy Int'l, NY.....	404	422
14	Newark International, NJ.....	409	415
15	Phoenix-Deer Valley, AZ.....	369	402
16	San Francisco Int'l, CA.....	389	380
17	Salt Lake City Int'l, UT.....	366	373
18	Washington Dulles Int'l, VA.....	372	366
19	Boston/Logan Int'l, MA.....	369	361
20	La Guardia, NY.....	367	357
21	Miami International, FL.....	376	351
22	Van Nuys, CA.....	311	351
23	Grand Forks International, ND.....	341	346
24	Memphis International, TN.....	336	339
25	Seattle/Tacoma Int'l, WA.....	314	318

*Preliminary

Source: APO-130
(202) 267-3350

As of 01/20/11

50 Busiest FAA Airport Traffic Control Towers

Airport Operations (000's)			
CY 2009 Rank	Tower and State	Jan-Dec 2010*	Jan-Dec 2009
26	Daytona Beach Int'l, FL.....	267	312
27	Orlando International, FL.....	315	306
28	Long Beach/Daugherty, CA.....	304	297
29	Santa Ana/John Wayne, CA.....	273	296
30	Honolulu International, HI.....	265	275
31	Washington National, DC.....	274	274
32	Baltimore/Wash. Int'l, MD.....	276	268
33	Fort Lauderdale/Hollywood, FL.....	272	267
34	Seattle/Boeing Field, WA.....	259	266
35	Denver/Centennial, CO.....	283	263
36	Anchorage International, AK.....	275	257
37	Mesa/Falcon Field, AZ.....	215	255
38	Chicago Midway, IL.....	246	245
39	Tulsa/Riverside, OK.....	211	245
40	Prescott/Love Field, AZ.....	232	240
41	Metropolitan Oakland Int'l, CA.....	220	235
42	Portland International, OR.....	223	227
43	Tomball DW Hooks, TX.....	202	225
44	Covington/Cincinnati Int'l, KY.....	178	223
45	Portland-Hillsboro, OR.....	220	222
46	San Diego/Gillespie Field, CA.....	219	218
47	Orlando/Sanford, FL.....	190	216
48	Miami/Kendall-Tamiami, FL.....	190	213
49	Lambert-St. Louis Int'l, MO.....	186	209
50	San Diego/Montgomery, CA.....	192	203

25 Busiest Contracted Airport Traffic Control Towers

Airport Operations (000's)			
CY 2009 Rank	Tower and State	Jan-Jun 2010*	Jan-Dec 2009
1	Chandler Municipal, AZ.....	166	204
2	Phoenix/Williams Gateway, AZ.....	178	186
3	Phoenix-Goodyear Muni, AZ.....	146	178
4	Hollywood/North Perry, FL.....	120	162
5	San Antonio/Stinson Field, TX.....	126	154
6	Ormond Beach Municipal, FL.....	122	154
7	New Smyrna Beach Muni, FL.....	134	143
8	Denton, TX.....	142	142
9	Melbourne International, FL.....	146	141
10	Titusville/Space Coast Rgnl, FL....	104	137
11	Kalaeloa, HI.....	113	129
12	Tucson/Ryan Field, AZ.....	115	126
13	New Iberia/Acadiana Rgnl, LA.....	126	125
14	Orlando/Kissimmee Muni, FL.....	124	120
15	Ramona Airport, CA.....	102	115
16	Kailua/Kona International, HI.....	125	109
17	San Angelo/Mathis Field, TX.....	107	109
18	Hyannis, MA.....	104	108
19	Jacksonville/Craig Muni, FL.....	110	107
20	San Carlos, CA.....	113	106
21	Glendale Municipal, AZ.....	82	104
22	Naples Municipal, FL.....	82	101
23	Lihue, HI.....	116	99
24	Pompano Beach Airpark, FL.....	111	95
25	St. Augustine, FL.....	100	93

*Preliminary

As of: 01/20/11

50 Busiest Radar Approach Control Facilities

Tracon Ops (000s)			
CY 2009 Rank	Facilities/State	Jan-Dec 2010*	Jan-Dec 2009
1	Southern Calif. TRACON, CA.....	1,954	1,972
2	New York TRACON, NY.....	1,884	1,831
3	Potomac TRACON, DC.....	1,525	1,490
4	Northern Calif. TRACON, CA.....	1,381	1,446
5	Atlanta TRACON, GA.....	1,263	1,275
6	Chicago TRACON, IL.....	1,247	1,186
7	Dallas/Ft Worth, TRACON, TX.....	1,101	1,066
8	Houston TRACON, TX.....	920	898
9	Miami International, FL.....	914	874
10	Denver TRACON, CO.....	882	853
11	Honolulu Control Facility, HI.....	727	820
12	Phoenix TRACON, AZ.....	634	651
13	Philadelphia International, PA.....	637	637
14	Charlotte/Douglas Int'l, NC.....	623	604
15	Boston TRACON, MA.....	634	603
16	Central Florida TRACON, FL.....	630	592
17	Las Vegas TRACON, NV.....	578	588
18	Detroit TRACON, MI.....	590	560
19	Minneapolis TRACON, MN.....	553	548
20	Seattle/Tacoma TRACON, WA.....	479	484
21	Salt Lake City TRACON, UT.....	442	456
22	Tampa International, FL.....	442	452
23	San Antonio Int'l, TX.....	365	370
24	Jacksonville Int'l, FL.....	361	351
25	St Louis TRACON, MO.....	322	341

* Preliminary

As of: 01/20/11

50 Busiest Radar Approach Control Facilities

		Tracon Ops (000's)	
CY 2009 Rank	Facilities/State	Jan-Dec 2010*	Jan-Dec 2009
26	San Juan CERAP, PR.....	310	336
27	Daytona Beach Int'l, FL.....	304	327
28	Covington/Cincinnati Int'l, OH.....	277	320
29	Portland TRACON, OR.....	297	302
30	Pensacola TRACON, FL.....	307	297
31	Corpus Christi, TX.....	279	294
32	Milwaukee/Gen Mitchell Intl, WI....	310	278
33	Cleveland Hopkins Int'l, OH.....	274	274
34	Anchorage TRACON, AK.....	277	261
35	Pittsburgh International, PA.....	269	260
36	Indianapolis International, IN.....	254	257
37	Palm Beach International, FL.....	263	256
38	Raleigh-Durham Int'l, NC.....	242	253
39	Austin, TX.....	255	250
40	Kansas City International, MO.....	245	250
41	Norfolk International, VA.....	240	241
42	Nashville International, TN.....	248	241
43	Port Columbus Int'l, OH.....	245	239
44	High Desert TRACON, CA.....	253	228
45	Cape TRACON, MA.....	226	223
46	Yankee TRACON, CT.....	225	223
47	Albuquerque Int'l, LA.....	213	222
48	Tucson TRACON, AZ.....	215	220
49	Oklahoma City/Will Rogers, OK....	223	214
50	Omaha TRACON, NE.....	209	210

Automated Flight Service Stations Activity

CY 2008 Rank	AFSS/State	Flight Services (000's)	
		Jan-Dec 2010*	Jan-Dec 2009
1	Ashburn AFSS, VA.....	6777	6882
2	Kenai, AK.....	290	261
3	Fairbanks, AK.....	128	130
4	Juneau, AK.....	72	69

* Preliminary

(202) 385-4734

As of: 01/20/11

Airports

Number of U.S. Airports (As of December 31)

	2010	2009	2008
Total Airports	19,802	19,750	19,930
Airports.....	13,473	13,494	13,589
Heliports.....	5,650	5,571	5,568
Seaplane Bases.....	496	497	503
Gliderports.....	35	35	35
Balloonports.....	13	14	14
Ultralight Flightparks.....	135	139	139
Total Civil Public Use Airports	5,175	5,178	5,202
Civil Public Use Part 139.....	551	559	560
Civil Public Use Non-Part 139.....	4,624	4,619	4,642
Civil Public Use Airports Abandoned..	14	16	16
Newly Established Public Use.....	16	5	3
Total Civil Private Use Airports	14,353	14,298	14,451
Civil Private Use Airports Abandoned.	121	360	461
Newly Established Private Use.....	212	214	151
Military Airports	274	274	277

Source: AAS-100
(202) 267-8752

As of: 12/31/10

National Airspace Total System Delays

Year	Jan	Feb	Mar	Apr	May	Jun	Jul	Aug	Sep	Oct	Nov	Dec	YTD Total
2010*	24,243	22,330	30,725	20,802	35,839	38,973	38,831	30,517	25,458	23,775	19,584	0	311,077
2009	26,704	30,131	43,481	48,612	47,867	52,267	51,129	44,629	29,371	41,078	24,597	33,362	473,228
2008	39,788	46,963	43,868	43,114	44,214	68,565	64,627	50,108	38,053	34,689	37,222	43,387	554,598
2007	32,927	30,071	39,558	39,340	44,055	58,824	54,689	52,875	38,896	55,140	46,880	47,931	541,186
2006	29,463	24,705	37,218	35,132	40,669	48,096	47,606	46,547	48,092	51,053	43,482	39,797	491,860

Delays of 15 minutes or longer

* Preliminary information that is subjected to change

Source: ATT-220
(703) 904-4470

As of: 01/07/11

Aircraft

U.S. Air Carrier Activity

	CY 2010	CY 2009	CY 2008
Type of Carrier			
Domestic, flag, supplemental, and cargo air carriers.....	7,431	7,177	7,255
Commuter Air Carriers and Air Taxis.....	11,220	11,342	11,386
Total Number of Aircraft¹.....	18,651	18,519	18,641
Type of Aircraft			
Jet.....	10,264	9,977	9,990
Turboprop.....	2,544	2,576	2,688
Piston.....	3,010	3,143	3,213
Rotary Wing.....	2,833	2,823	2,750
Air Carrier Traffic Statistics² (Millions)*			
Passenger miles flown.....	790,150	769,246	812,088
Passenger enplanements.....	716	701	739
Ton miles.....	107,316	110,247	119,491
Aircraft miles flown.....	7,309	7,249	7,813
Passenger load factor ³			
Domestic.....	82.1%	81.0%	79.5%
International.....	81.6%	78.6%	79.8%

¹ Source: Vital Information System

² Includes domestic and international scheduled and non-scheduled service, domestic, flag, supplemental, cargo air carriers and commuters - CY 10 estimated

³ Proportion of aircraft seating capacity that is sold.

As of: 02/01/2011

Source: AFS-40
(202) 385-4514
*BTS (K-25)
(202) 366-8513

**U.S. General Aviation
and Air Taxi Activity
(Calendar Years)**

	Estimated Active Aircraft (thousands)		Estimated Hours Flown (Millions)	
	2009	2008	2009	2008
Total	223.9	228.7	23.8	26.0
By Type Aircraft				
Piston.....	157.1	163.0	13.6	15.1
Turboprop.....	9.1	8.9	2.2	2.5
Jet.....	11.3	11.0	3.2	3.6
Rotary Wing.....	10.0	9.9	3.0	3.2
Experimental.....	24.4	23.4	1.3	1.2
Light Sport.....	6.5	6.8	0.3	0.3
Other.....	5.5	5.7	0.2	0.2
By Type Flying				
Corporate.....	10.5	11.7	2.4	3.1
Business.....	22.4	22.4	2.5	2.5
Personal.....	152.3	154.4	8.5	8.3
Instructional.....	14.1	15.0	3.4	4.4
Aerial Application.....	3.2	3.1	10.0	0.9
Aerial Observation.....	5.3	5.3	1.2	1.4
Aerial Other.....	0.8	1.0	0.2	0.3
External Load.....	0.2	0.4	0.1	0.2
Other Work.....	1.2	0.9	0.2	0.3
Sightseeing.....	0.8	0.7	0.1	0.2
Air Tours.....	0.4	0.4	0.2	0.3
Air Taxi.....	7.0	6.9	2.2	2.4
Air Medical Services...	1.7	1.6	0.7	0.7

As of:01/25/11

AVP-220
(202) 267-8659

**Aircraft Certification Service
Aircraft Certification Mission and
Program Files**

	FY 2009	FY 2008
Type Certificates/Supplemental Type Certificates Issued.....	1,194	1,272
Other Design Approvals Issued.....	3,054	3,184
Production Approvals (Including Amendments) Issued.....	2,971	2,642
Airworthiness Certificates Issued.....	508	597
New Airworthiness Directives (AD) Issued.....	325	461
New Designees (Representative of the Administrator) Appointed.....	384	374
Total Active Designees.....	3,921	3,967

As of: 01/14/10

Source: AIR-530
202-267-8386

Industry Trends

Scheduled U.S. Air Carrier Traffic and Financial Trends (In Billions)

	FY 2010	FY 2011	Numerical Change	Percent Change
TRAFFIC				
ASM'S				
Majors	875.43	892.65	(17.22)	(1.9)
Nationals	76.81	56.81	20.00	35.2
Regionals	1.41	8.09	(6.68)	(82.6)
Small Cert / Commuter	7.11	8.27	(1.16)	(14.0)
Totals.....	960.76	965.82	(5.06)	(0.5)
RPM'S				
Majors	720.33	715.08	5.25	0.7
Nationals	60.08	43.45	16.63	38.3
Regionals	1.00	5.86	(4.86)	(82.9)
Small Cert / Commuter	4.85	5.53	(0.68)	(12.3)
Totals.....	786.26	769.92	16.34	2.1
Load Factor (in percent)				
Majors	82.3%	80.1%	2.2	
Nationals	78.2%	76.5%	1.7	
Regionals	71.2%	72.5%	(1.3)	
Small Cert / Commuter	68.2%	66.9%	1.3	
Totals.....	81.8%	79.7%	2.1	
FINANCIAL (Scheduled and Nonscheduled)				
Revenues				
Majors	\$155.28	\$145.08	\$10.20	7.0
Nationals	\$14.05	\$11.32	\$2.73	24.1
Regionals	\$1.02	\$1.55	(\$0.53)	(34.2)
Small Cert / Commuter	\$1.45	\$1.62	(\$0.17)	(10.5)
Totals.....	\$171.80	\$159.57	\$12.23	7.7
Expenses				
Majors	\$146.59	\$145.12	\$1.47	1.0
Nationals	\$13.19	\$10.60	\$2.59	24.4
Regionals	\$0.95	\$1.42	(\$0.47)	(33.1)
Small Cert / Commuter	\$1.42	\$1.57	(\$0.15)	(9.6)
Totals.....	\$162.15	\$158.71	\$3.44	2.2
Operating Profit/Loss				
Majors	\$8.69	(\$0.04)	\$8.73	
Nationals	\$0.86	\$0.72	\$0.14	
Regionals	\$0.07	\$0.13	(\$0.06)	
Small Cert / Commuter	\$0.03	\$0.05	(\$0.02)	
Totals.....	\$9.65	\$0.86	\$8.79	

Aviation Forecasts

	Estimated FY 2010	Forecast FY 2014
FAA FACILITY WORKLOAD		
Aircraft Handled by FAA ARTCC's (Millions)		
Air Carrier.....	22.3	25.2
Air Taxi/Commuter.....	8.6	9.3
General Aviation.....	6.5	7.0
Military.....	3.0	3.0
Total.....	40.5	44.5
Operations Logged by FAA/Contract Towers (Millions)		
Airport.....	51.2	53.4
Instrument.....	39.0	41.2
CIVIL AVIATION ACTIVITY		
U.S. Commercial Air Carriers Total Scheduled Traffic (Mainline and Regional)		
Revenue Passenger Enplanements (Millions).....	712.6	821.6
Revenue Passenger Miles (Billions).....	786.7	941.6
U.S. Commercial Aircraft Fleet*		
Mainline Air Carriers Passenger Jet Aircraft.....	712.6	821.6
Revenue Passenger Miles (Billions).....	786.7	941.6
General Aviation Estimated		
Hours Flown (Millions).....	23.3	27.0
Active Aircraft (Thousands).....	229.1	235.7
ESTIMATED FUEL CONSUMED BY U.S. DOMESTIC CIVIL AVIATION (Millions of Gallons)		
Jet Fuel		
Air Carrier.....	17,071	19,092
General Aviation.....	1,432	1,898
Aviation Gas		
Air Carrier.....	2	2
General Aviation.....	220	215
Active Pilots (Thousands)*.....	627,588	610,140

*Calendar Year

As of: 03/11/11

Source: APO-110
(202) 493-4236

U.S. Commercial Space Transportation FAA Licensed Activity

	CY 2011 (Projected)	CY 2010	CY 2009
Licensed Commercial Launches			
TOTAL	7	4	5
Number of Orbital Launches	7	4	5
Number of Suborbital Launches	0	0	0
By Launch Vehicle Type			
Atlas V (Lockheed Martin)	0	0	1
Delta II, IV (Boeing Company)	0	2	2
Falcon 9 (SpaceX)	3	2	N/A
Falcon 1 (SpaceX)	2	0	1
Pegasus XL (Orbital Sciences)	0	0	0
Taurus II (Orbital Sciences)	1	N/A	N/A
Zenit 3SL (Sea Launch)	1	0	1
By Launch Site (Federal)			
Cape Canaveral AF Station, FL	3	3	2
Vandenberg AFB, CA	0	1	1
Kwajalein / Marshall Islands	1	3	1
By Launch Site (Commercial)			
Pacific Ocean	1	0	1
Other Commercial	0	0	0
Experimental Permit Launches			
TOTAL (not part of license total)	5 to 10	0	0

Source: AST

(202) 267-7989

As of: 1/12/11

United States Commercial Space Launch Schedule, CY 2011 (launch dates are subject to change)		
Payload (Operator)/ Description	Launch Company/ Vehicle	Launch Date/ Launch Site
Falcon 1 Telemetry Package (USA) Development Firefly (USA) Development QbX-3 – QbX-10 (USA) Development	SpaceX Falcon 1	May 2011 Kwajalein Atoll
Dragon COTS Demo 2 (USA) Development ORBCOMM 2F1-2F2 (USA) Communications	SpaceX Falcon 9	July 2011 Cape Canaveral AFS
Dragon COTS Demo 3 (USA) Development	SpaceX Falcon 9	October 2011 Cape Canaveral AFS
Dragon ISS D1 (USA) ISS Supply	SpaceX Falcon 9	December 2011 Cape Canaveral AFS
Cygnus COTS Demo 1 (USA) Development	Orbital Sciences Taurus II	December 2011 Mid-Atlantic Regional Spaceport
ORBCOMM 2F3-2F5 Communications	SpaceX Falcon 1	2011 Kwajalein Atoll
Unannounced Unannounced	Sea Launch Zenit 3SL	2011 Pacific Ocean

As of: 1/12/2011

Source: AST
(202) 267-7989

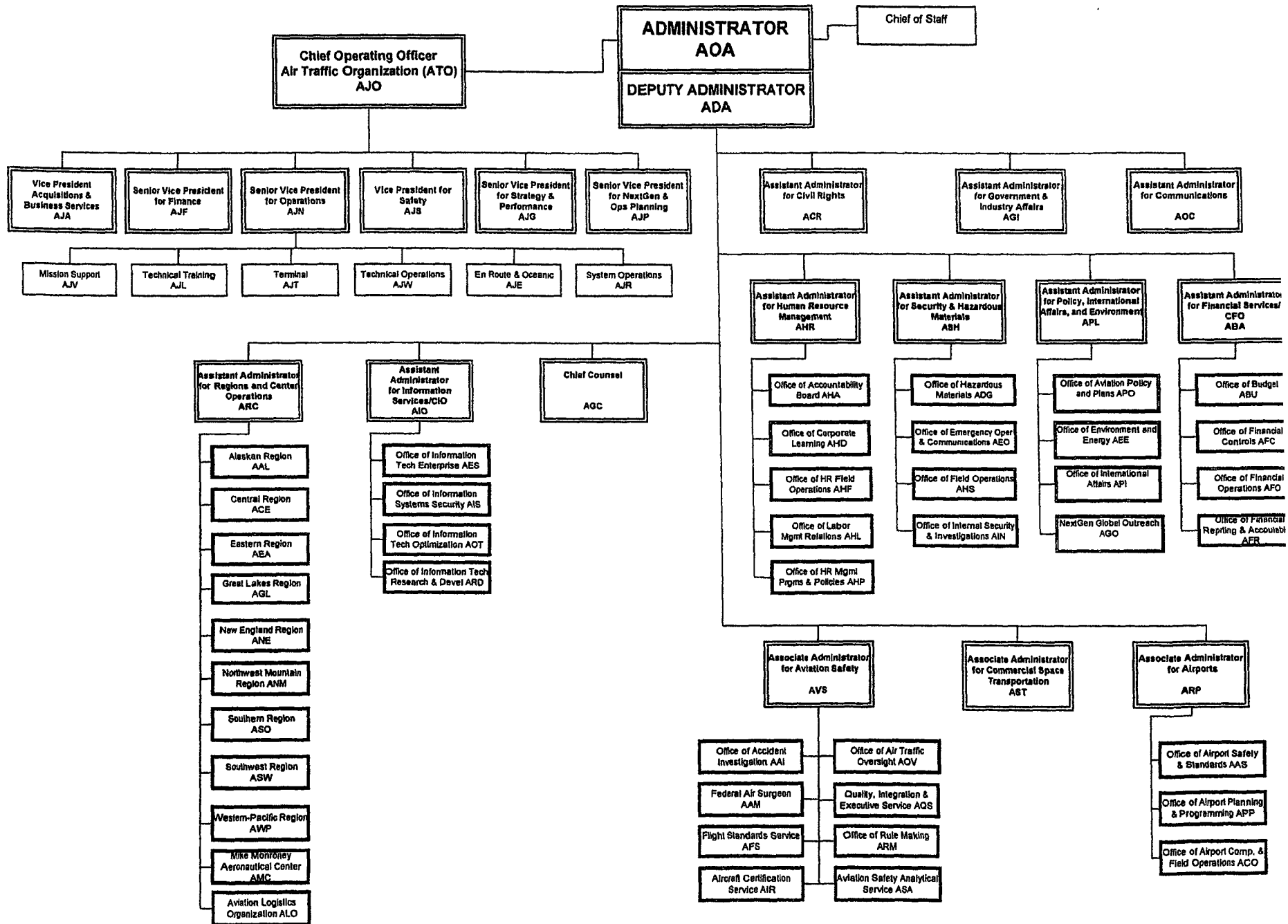
**Active Pilots and Nonpilots
(As of 31 December)**

	2009		2008	
	Total	Women	Total	Women
Pilot-Total	594,285	36,808	613,746	37,981
Student.....	72,280	8,450	80,989	9,127
Private.....	211,619	14,322	222,596	15,015
Commercial.....	125,738	8,289	124,746	8,083
Airline Transport.....	144,600	5,636	146,838	5,657
Nonpilot-Total	682,315	147,052	678,181	144,968
Mechanic.....	329,027	6,980	326,276	6,740
Repairmen.....	41,389	2,335	41,056	2,284
Ground Instructor.....	75,461	5,860	74,983	5,785
Flight Attendant	156,741	126,034	154,671	124,419
Flight Engineer.....	51,022	1,828	53,135	1,894
Flight Instructor	94,683	6,362	93,202	6,293

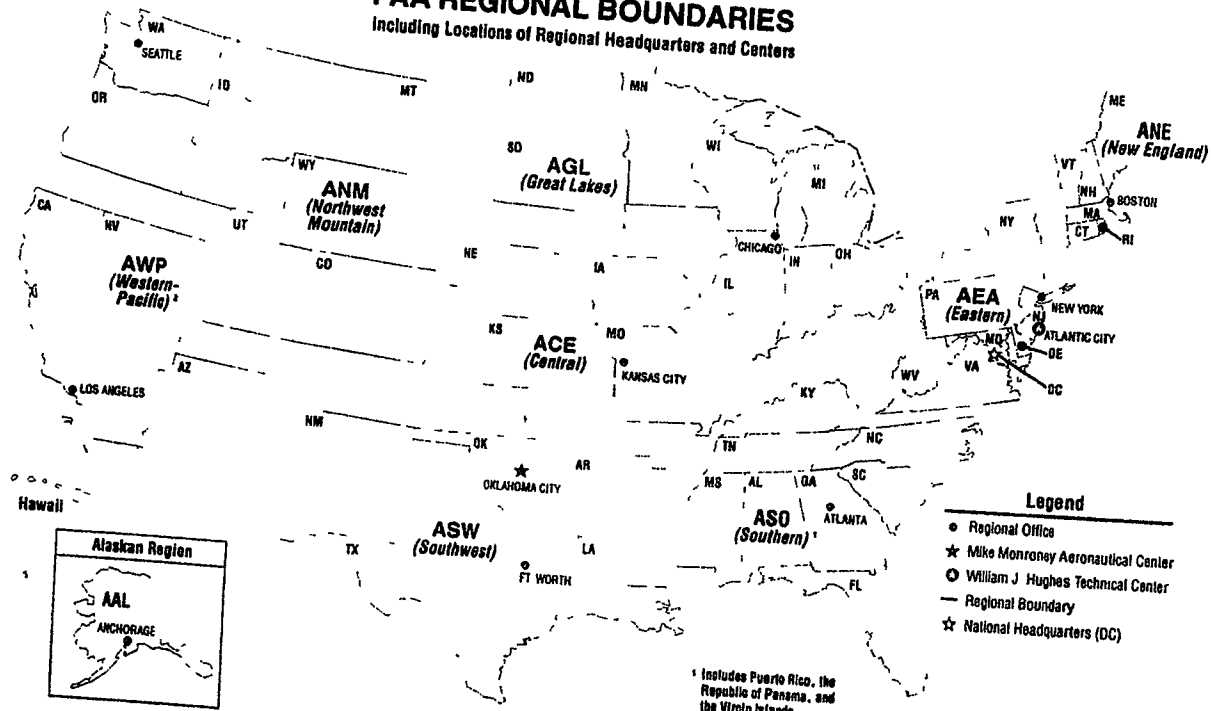
As of 12/31/2009

Airmen

FEDERAL AVIATION ADMINISTRATION



U. S. DEPARTMENT OF TRANSPORTATION
 Federal Aviation Administration
FAA REGIONAL BOUNDARIES
 Including Locations of Regional Headquarters and Centers



- Legend**
- Regional Office
 - ★ Mike Monroney Aeronautical Center
 - William J. Hughes Technical Center
 - - - Regional Boundary
 - ☆ National Headquarters (DC)

¹ Includes Puerto Rico, the Republic of Panama, and the Virgin Islands

² Includes Wake, Samoa, and Guam

FAA Resources

FAA Employment (Permanent Employees)¹

	FY10	FY09
Line of Business		
Air Traffic Organization (ATO).....	35,224	34,986
Aviation Safety (AVS).....	7,309	7,230
Airports (ARP).....	500	490
Comm. Space Transportation (AST)....	65	67
Staff Offices**.....	4,358	4,247
Total	47,456	47,020
Region/Center/Headquarters (included in above total)		
Aeronautical Center.....	3,549	3,483
Alaskan.....	943	941
Central.....	2,197	2,218
Eastern.....	4,858	4,698
Great Lakes.....	5,853	5,761
New England.....	1,505	1,443
Northwest Mountain.....	4,349	4,230
Southern.....	7,195	7,014
Southwest.....	5,169	5,041
Western-Pacific.....	4,824	4,701
Washington Headquarters ²	5,885	6,389
Technical Center.....	1,129	1,101

¹ Full time permanent and part time permanent employees only.

² Washington Headquarters employees physically located in Orville/Wilbur Wright Buildings and all surrounding areas .

** Staff Offices include: ABA; ACR; ADA;AEP; AGC; AGI; AHR; AIO; AOA; AOC; APO; ARC; ASH.

Disclaimer: This is a statistical snapshot of the workforce demographics. The use of this data in any employment decision is PROHIBITED without the express written authorization of the Deputy Chief Counsel for Operations, AGC-3.

As of: 06/30/10

Source: AHP-100
(202) 267-8257

FAA Percent Minority & Female Employment¹

Lines of Business/Region/Center/Headquarters	% Minority		%Female	
	FY10	FY09	FY10	FY09
Air Traffic Organization (ATO)	21.0	21.0	21.0	21.0
Aviation Safety (AVS).....	20.0	20.0	27.0	27.0
Airports (ARP).....	28.0	28.0	40.0	39.0
Commercial Space Transportation (AST).....	38.0	36.0	29.0	31.0
Staff Offices.....	33.0	33.0	51.0	51.0
Total	22.0	22.0	25.0	25.0
Aeronautical Center	22.0	22.0	37.0	38.0
Alaskan.....	15.0	16.0	22.0	22.0
Central.....	14.0	13.0	21.0	22.0
Eastern.....	17.0	17.0	18.0	18.0
Great Lakes.....	12.0	12.0	19.0	19.0
New England.....	8.0	8.0	20.0	21.0
Northwest Mountain.....	15.0	15.0	24.0	24.0
Southern.....	26.0	26.0	21.0	21.0
Southwest.....	26.0	26.0	21.0	21.0
Western-Pacific.....	32.0	32.0	21.0	21.0
Washington Headquarters ²	33.0	31.0	41.0	38.0
Technical Center.....	23.0	23.0	31.0	32.0

¹ All FAA employees.

² Washington Headquarters employees physically located in Orville/Wilbur Wright Buildings and surrounding areas.

As of: 06/30/10

Source: AHP-100
(202) 267-8257

Major Work Force Employment

	Employment				
	FY11	FY10	FY09	%Chg. FY11 - FY10	Actual Change
Controller Work Force*					
Controllers	15,594	15,696	15,770	-0.6%	-102
Traffic Management Coordinators	566	573	558	-1.2%	-7
Operations Supervisors	1,914	1,903	1,918	0.6%	11
Flight Service Stations (FSS)	163	166	168	-1.8%	-3
Field Maintenance					0
PASS Technical	6,128	6,126	6,155	0.0%	2
NATCA Engineers	1,265	1,280	1,270	0.4%	5
1st Line Supervisors	667	662	680	0.8%	5
Airports Work Force	479	479	479	0.0%	0
Aircraft Certification	1,295	1,298	1,266	-0.2%	-3
Flight Standards Work Force	5,240	5,290	5,079	-0.9%	-50

* Includes all employees in pay status and Academy trainees.

Data as of: 01/25/11

Source: ATO-F, (202) 267-9123

Source: AQS-400, (202) 267-8990

Labor Relations

	BARGAINING UNITS	LABOR AGREEMENTS	EMPLOYEES REPRESENTED
Unions.....	42	29	36,665
AFGE.....	9	6	1,904
AFSCME (HQ).....	1	1	2,352
LIUNA.....	1	1	188
NAGE.....	3	3	318
NATCA.....	16	9	19,702
NFFE.....	3	2	634
PAACE.....	4	3	378
PASS.....	5	4	11,163
Unrepresented			1,157
Nonbargaining			10,641
		Total employees:	48,437

AFGE --American Federation of Government Employees
 AFSCME --American Federation of State, County, and Municipal Employees
 LIUNA --Laborer's International Union of North America
 NAGE --National Association of Government Employees
 NACTA --National Air Traffic Controllers Association
 NFFE --National Federation of Federal Employees
 PAACE --Professional Association of Aeronautical Center Employees
 PASS --Professional Aviation Safety Specialists

Source: AHL-400
(202) 267-3548

As of: 02/07/11

FAA Finances
(In Millions of Dollars)

	FY 2009	FY 2010	FY 2011
	Actual ¹	Enacted	Requested
Budget Authority (BA)			
Grants-In-Aid (Contract Auth/Approp).....	4,907	3,121	3,515
Research, Engineering, & Development.....	171	191	190
Facilities and Equipment.....	2,942	2,928	2,970
Operations.....	9,046	9,350	9,793
Total.....	17,066	15,590	16,468
Obligations Incurred--Operations			
Appropriation by Line of Business			
Air Traffic Organization (ATO).....	7,095	7,299	7,631
Aviation Safety (AVS).....	1,170	1,234	1,294
Commercial Space Transportation (AST).....	14	15	16
Staff Offices (SO).....	764	802	853
Total.....	9,043	9,350	9,794
Airport Grant Obligations (NET)			
Primary Airports & Cargo.....	968	968	939
States/Territories/Insular/Alaska Supp.....	698	698	696
Carryover Entitlements.....	623	623	568
Discretionary Fund.....	593	586	671
Small Airport Fund.....	503	503	499
Total.....	3,385	3,378	3,373
Total FAA Outlays.....	15,418	16,649	16,409
Trust Fund Receipts from Excise Taxes and Interest²			
Transportation of Persons by Air.....	7,466	7,546	7,863
Transportation of Property.....	470	435	461
Use of International Air Facilities.....	2,187	2,174	2,354
Aviation Fuel Commercial Use.....	552	379	397
Aviation Fuel (Other Than Gas).....	(25)	157	180
Aviation Gasoline.....	29	42	44
Total Tax Revenue.....	10,679	10,733	11,299
Revenue Refund	(110)	(97)	(103)
Net Tax	10,569	10,636	11,196
Interest revenue.....	308	209	246
Total Tax & Interest Revenue.....	10,987	10,942	11,545

Numbers may not add due to rounding

¹ Includes funding provided by the American Recovery and Reinvestment Act of 2009. This act provides supplemental funding of \$200 million to Facilities and Equipment and \$1.1 billion for Grants in Aid to Airports

² Data Source for FY 2010 and 2011 projections. Department of Treasury, Office of Tax Analysis, Revenue Estimating Division

FAA NAS Operational Facilities

(As of March 1, 2011)

	2010	2009	2008
NAS Operational Facilities¹.....	63,108	63,846	60,851
Communications.....	19,097	19,269	19,493
Automation.....	1,902	1,593	1,517
Infrastructure.....	21,841	20,016	19,356
Mission Support.....	3,991	4,080	4,102
Navigation.....	12,123	12,243	12,359
Surveillance.....	1,853	1,779	1,732
Weather.....	2,301	2,264	2,292
Air Traffic Control Facilities²			
Air Route Traffic Control Center.....	21	21	21
Airport Traffic Control Tower.....	512	512	512
Flight Service ³	24	24	30
Flight Service Stations.....	21	21	27
Automated Flight Service Stations...	3	3	3

¹ Includes All Responsibility Codes

² Included in NAS operational facilities.

³ Flight Service include Flight Service Stations and Automated Flight Service Stations.

As of: 03/01/11

Source: AOP-200
(202) 267-5288

*

FAA Officials

Washington Headquarters

Routing Symbol	Officials
AOA*	Administrator J. Randolph Babbitt, 202-267-3111 David Weingart, Chief of Staff, 202-267-7416 Darlene Freeman, Senior Advisor, 202-267-3574
ADA*	Deputy Administrator Michael P. Huerta, 202-267-8111 Chris Rocheleau, Senior Advisor, 202-267-7417
AJO	Chief Operating Officer, Air Traffic Organization Henry P. Krakowski, 202-493-5602
AJF*	Finance Business Unit Senior Vice President, Mark House, 202-267-3022
AJP	NextGen and Operations Planning Business Unit Senior Vice President, Victoria Cox, 202-267-7111
AJG	Strategy and Performance Business Unit Senior Vice President, John Pipes, 202-267-5724
AJN*	Operations Business Unit Senior Vice President, Rick Ducharme, 202-267-7224
ABA	Assistant Administrator for Financial Services Ramesh K. Punwani, CFO, 202-267-9105 Deputy, Vacant, 202-267-3882
ABU*	<i>Office of Budget</i> <i>Director, Carl Burnus, Acting, 202-267-8010</i>
AFC*	<i>Office of Financial Controls</i> <i>Director, David Rickard, Acting, 202-267-7140</i>
AFO	<i>Office of Financial Operations</i> <i>Director, Peter J. Basso, 202-267-8242</i>
AFR	<i>Office of Financial Reporting & Accountability</i> <i>Director, Allison Ritman, 202-267-3018</i>
ACR*	Assistant Administrator for Civil Rights Fanny Rivera, 202-267-3254 Deputy, Vacant, 202-267-3264

FAA Officials

Washington Headquarters--(Cont)

Routing Symbol	Officials
AGC*	Chief Counsel J. David Grizzle, 202-267-3222 Deputy Chief Counsel Marc L. Warren, 202-267-3773
AEE	<i>Office of Audit and Evaluation</i> <i>Director, H. Clayton Foushee, 202-267-9440</i>
AGI*	Asst. Administrator for Government & Industry Affairs Roderick D. Hall, 202-267-3277 Deputy, Molly Harris, 202-267-8211
AHR*	Asst. Administrator for Human Resource Management Catherine Emerson, Acting, 202-267-3456 Deputy, Angela Porter, Acting, 202-267-3850
AHA	<i>Office of the Accountability Board</i> <i>Executive Director, Mana Fernandez-Greczmiel, 202-267-3065</i>
AHD ..	<i>Office of Corporate Learning</i> <i>Executive Director, Jana Murphy, 202-493-4507</i>
AHF	<i>HR Field Operations</i> <i>Executive Director, Ken Nephew, 817-222-5809</i>
AHL	<i>Office of Labor Management Relations</i> <i>Executive Director, Kimberly Moseley, 202-267-7306</i>
AHP*	<i>Office of Human Resources Management Programs and Policies</i> <i>Executive Director, Jay Aul, Acting, 202-267-3850</i>
AIO	Assistant Administrator for Information Services David M. Bowen, CIO, 202-493-4570
AIS	<i>Office of Information Systems Security</i> <i>Director, Christopher Garcia, Acting, 202-267-7104</i>
AOT	<i>Office of Information Technology Optimization</i> <i>Director, Cheryl Rogers, 202-267-9477</i>
AES	<i>Office of Information Technology Enterprise</i> <i>Director, Robert Rovinsky, 202-493-4019</i>
ARD*	<i>Office of Information Technology Research and Development</i> <i>Chief Technology Officer, Doug Roseboro, 202-385-8054</i>

FAA Officials

Washington Headquarters--(Cont)

Routing Symbol	Officials
AOC*	Assistant Administrator for Communications Sasha N. Johnson, 202-267-3883 Deputy, Public Affairs, Laura Brown, 202-267-3883 Deputy, Corporate Communications, Carmen Marco, 202-267-9499
APL*	Asst. Administrator for Policy, International Affairs and Environment Julie Oettinger, 202-267-3927 Deputy, Carl Burleson, Acting, 202-267-7954
AEE*	<i>Office of Environment and Energy</i> Executive Director, Carl Burleson, 202-267-3576
API*	<i>Office of International Affairs</i> Executive Director, Carey Fagan, Acting, 202-385-8900
APO*	<i>Office of Aviation Policy and Plans</i> Executive Director, Nan Shellabarger, 202-267-3274
ARC	Assistant Administrator for Regions and Center Operations Paula Lewis, 202-267-7369 Deputy, Michael J. Cirillo, 202-267-7369
ASH	Assistant Administrator for Security & Hazardous Materials Claudio Manno, 202-267-7211 Deputy, Thomas D. Ryan, 202-267-7211
ADG*	<i>Office of Hazardous Materials</i> Director, Chrs Glasow, 202-385-4904
AEC*	<i>Office of Executive & Center Operations</i> Director, Victor Kemens, 202-267-3538
AEO*	<i>Office of Emergency Operations, Communications and Investigations</i> Director, Angela Stubblefield, 202-267-7576
AHC*	<i>Office of Joint Security & Hazardous Materials, Central</i> Director, Marty Alford, 817-222-5700
AHE*	<i>Office of Joint Security & Hazardous Materials, East</i> Willie J. Gnpper, 404-305-6750
AHW*	<i>Office of Joint Security & Hazardous Materials, West</i> Patricia Pausch, 425-227-2705
AIN	<i>Office of Security</i> Director, Bruce Herron, 202-493-5405

FAA Officials

Washington Headquarters--(Cont)

Routing Symbol	Officials
ARP	Associate Administrator for Airports Catherine M. Lang, Acting, 202-267-9471 Deputy, Benito DeLeon, Acting, 202-267-9471
AAS	<i>Office of Airport Safety and Standards</i> Director, Michael J. O'Donnell, 202-267-3053
ACO	<i>Office of Airport Compliance and Field Operations</i> Director, Randall S. Fiertz, 202-267-3085 <i>Office of Airport Planning & Programming</i>
APP	Director, Elliott Black, Acting, 202-267-8775
AST	Dr. George C. Nield, 202-267-7793 Deputy, James E. VanLaak, 202-267-7848
AVS	Associate Administrator for Aviation Safety Peggy Gilligan, 202-267-3131 Deputy, John J. Hickey, 202-267-7804
AAM	<i>Office of Aviation Medicine</i> Director, Frederick Tilton, MD, 202-267-3535
AFS	<i>Flight Standards Service</i> Director, John Allen, 202-267-8237
AIR	<i>Aircraft Certification Service</i> Director, Dorenda Baker, 202-267-8235
AOV	<i>Office of Air Traffic Oversight</i> Director, Anthony Ferrante, 202-267-5202
AQS	<i>Quality, Integration and Executive Service</i> Director, Tina Amereihn, 202-493-5717
ARM*	<i>Office of Rulemaking</i> Director, Pamela Hamilton, 202-267-9677
AVP*	<i>Office of Accident Investigation and Prevention</i> Director, Iony Fazio, 202-267-9612
Duty Officer	(202) 267-3333

FAA Officials

Major Field Organizations

Routing Symbol	Officials
AAL	Alaskan Region, Regional Administrator Robert N. Lewis, 907-271-5645 222 West 7th Avenue, Box 14 Anchorage, Alaska 99513-7587 Duty Officer, 907-271-5936
ACE	Central Region, Regional Administrator Joseph N. Miniace, 816-329-3050 901 Locust Kansas City, Missouri 64106 Duty Officer, 816-329-3000
ACT	William J. Hughes Technical Center, Director Wilson N. Felder, Ph.D., 609-485-6641 Atlantic City International Airport New Jersey 08405 Duty Officer, 609-485-6482
AEA	Eastern Region, Regional Administrator Carmine Gallo, 718-553-3000 1 Aviation Plaza 159-30 Rockaway Blvd. Jamaica, New York 11434-4809 Duty Officer, 718-553-3100
AGL	Great Lakes Region, Regional Administrator Barry D. Cooper, 847-294-7294 2300 East Devon Avenue Des Plaines, Illinois 60018 Duty Officer, 847-294-8400
AMC	Mike Monroney Aeronautical Center, Director Lindy Ritz, 405-954-4521 6500 South MacArthur Oklahoma City, Oklahoma 73125 Duty Officer, 405-954-3583

FAA Officials

Major Field Organizations--(Cont.)

ANE **New England Region, Regional Administrator**
Amy Lind Corbett, 781-238-7020
12 New England Executive Park
Burlington, Massachusetts 01803
Duty Officer, 781-238-7001

ANM **Northwest Mountain Region, Regional Administrator**
Kathryn Vernon, 425-227-2001
1601 Lind Avenue, S.W.
Renton, Washington 98055-4056
Duty Officer, 425-227-2000

ASO **Southern Region, Regional Administrator**
Doug Murphy, 404-305-5000
1701 Columbia Avenue
College Park, Georgia 30337
Duty Officer, 404-305-5180

ASW **Southwest Region, Regional Administrator**
Teresa Bruner, 817-222-5001
2601 Meacham Blvd.
Ft. Worth, Texas 76137-4298
Duty Officer, 817-222-5006

AWP **Western-Pacific Region, Regional Administrator**
William C. Withycombe, 310-725-3550
15000 Aviation Boulevard
Hawthorne, California 90261
Duty Officer, 310-725-3300

FAA Officials

International Area Offices

Routing Symbol	Officials
AEU	Europe, Africa, & Middle East Area Office, Director Steve Creamer, 011-322-508-2700 American Embassy, Brussels PSC 82 Box 002 APO AE 09724-1011
AWH	Western Hemisphere Area Office, Director Dawn Veatch, 202-385-8900 8600 NW 36th Street Miami, FL 33166
APC	Asia-Pacific Area Office, Director Jeri Alles, 011-65-6543-1952 American Embassy 27 Napier Road Singapore 258508

**FEDERAL AVIATION ADMINISTRATION
FLIGHT PLAN 2009-2013**

INCREASED SAFETY

Goal: Achieve the lowest possible accident rate and constantly improve safety.

1. Reduce commercial air carrier fatalities.
2. Reduce general aviation fatalities.
3. Reduce the risk of runway incursions.
4. Ensure the safety of commercial space launches.
5. Enhance the safety of FAA's air traffic systems.
6. Implement a Safety Management System (SMS) for the FAA.

Performance Targets:

Obj. 1 Cut the rate of fatalities per 100 million persons on board in half by FY 2025.

Obj. 2 Reduce the fatal accident rate per 100,000 flight hours by 10 percent over a 10-year period (2009-2018).

Obj. 2 By the end of FY 2009, reduce accidents in Alaska for general aviation and all Part 135 operations from the 2000-2002 average of 130 accidents per year to no more than 99 accidents per year.

Obj. 3 By FY 2010, reduce Category A and B (most serious) runway incursions to a rate of no more than 0.450 per million operations, and maintain or improve through FY 2013.

Obj. 3 By the end of FY 2013, reduce total runway incursions by 10 percent from the FY 2008 baseline.

Obj. 4 No fatalities, serious injuries, or significant property damage to the uninvolved public during licensed or permitted space launch and reentry activities.

As of 12/31/08

Source: APO-120
(202) 267-3220

INCREASED SAFETY Performance Targets (Continued)

Obj. 5 Limit Category A and B (most serious) operational errors to a rate of no more than 1.95 per million activities by FY 2012 and maintain through FY 2013.

Obj. 6 In FY 2010, implement SMS in the Air Traffic Organization, Office of Aviation Safety, and Office of Airports. In FY 2012, implement SMS policy in all appropriate FAA organizations.

GREATER CAPACITY

Goal: Work with local governments and airspace users to provide increased capacity and better operational performance in the United States airspace system that reduces congestion and meets projected demand in an environmentally sound manner.

Objectives:

1. Increase capacity to meet projected demand and reduce congestion.
2. Increase reliability and on-time performance of scheduled carriers.
3. Address environmental issues associated with capacity enhancements.

Performance Targets:

Obj. 1 Achieve an average daily airport capacity for the 35 OEP airports of 103,068 arrivals and departures per day by FY 2011 and maintain through FY 2013.

Obj. 1 Achieve an average daily airport capacity for the 7 Metro areas of 39,484 arrivals and departures per day by FY 2009 and maintain through FY 2013.

Obj. 1 Commission nine new runway/taxiway projects, increasing the annual service volume of the 35 OEP airports by at least 1 percent annually, measured as a five-year moving average, through FY 2013.

Obj. 1 Sustain adjusted operational availability of 99.7 percent for the reportable facilities that support the 35 OEP airports through FY 2013.

Obj. 2 Achieve a NAS on-time arrival rate of 88 percent at the 35 OEP airports and maintain through FY 2013.

Obj. 3 Reduce the number of people exposed to significant noise by 4 percent per year through FY 2013, as measured by a three-year moving average.

Obj.3 Improve aviation fuel efficiency by another 1 percent over the FY 2008 level through FY 2009, and 1 percent each subsequent year through FY 2013 to 11 percent, as measured by a three-year moving average of the fuel burned per revenue mile flown.

INTERNATIONAL LEADERSHIP

Goal: Increase the safety and capacity of the global civil aerospace system in an environmentally sound manner.

Objectives:

1. Promote improved safety and regulatory oversight in cooperation with bilateral, regional, and multilateral aviation partners.
2. Promote seamless operations around the globe in cooperation with bilateral, regional, and multilateral aviation partners.

Performance Targets:

Obj. 1 Work with the Chinese aviation authorities and industry to adopt 27 proven Commercial Aviation Safety Team (CAST) safety enhancements by FY 2011. This supports China's efforts to reduce commercial fatal accidents to a rate of 0.030 fatal accidents per 100,000 departures by FY 2012.

Obj. 1 By FY 2013, arrange commitments for external funding for at least 35 aviation development projects (7 per year).

Obj. 1 By FY 2013, work with at least 18 countries or regional organizations to develop aviation leaders to strengthen the global aviation infrastructure.

Obj. 2 By FY 2013, expand the use of NextGen performance-based systems and concepts to five priority countries.

ORGANIZATIONAL EXCELLENCE Performance Targets (Continued)

Obj. 3 Organizations throughout the agency will continue to implement cost efficiency initiatives such as: 10-15 percent savings for strategic sourcing for selected products and services; by the end of FY 2009, reduce leased space for Automated Flight Service Stations from approximately 510,000 square feet to approximately 150,000 square feet; annual reduction of \$15 million in Information Technology operating costs; and by FY 2010, reduce overhead costs 5-10 percent through automation of invoice processing.

Obj. 3 Obtain an unqualified opinion on the agency's financial statements (Clean Audit with no material weaknesses) each fiscal year.

Obj. 4 In FY 2009, 90 percent of Major System Investments are within 10 percent variance of current baseline total budget estimate at completion (BAC).

Obj. 4 In FY 2009, 90 percent of Major System Investments selected annual milestones are achieved.

Obj. 4 Maintain the annual average of FAA surveys on the American Customer Satisfaction Index at or above the average Federal Regulatory Agency score.

Obj. 4 Achieve zero cyber security events that disable or significantly degrade FAA services.

Obj. 5 Exceed Federal Emergency Management Agency continuity readiness levels by 5 percent.