



U.S. Department
of Transportation
**Federal Aviation
Administration**

ADMINISTRATOR'S FACT BOOK

August 2009

Produced by:
Assistant Administrator for Financial Services

Website:
[http://www.faa.gov/about/office_org/headquarters_offices/aba/
admin_factbook/](http://www.faa.gov/about/office_org/headquarters_offices/aba/admin_factbook/)

FAA MISSION

To provide the safest, most efficient aerospace system in the world.

FAA VISION

We continue to improve the safety and efficiency of flight. We are responsive to our customers and are accountable to the taxpayer and the flying public.

Table of Contents

FAA Vision and Mission..... Inside Front Cover
FAA ValuesInside Back Cover

Safety

Aviation Accidents by Type of Operation..... 3*
Aviation Accident Rates by Type of Operation..... 4*
Airspace Incidents by Incident Type..... 5*
Airspace Incident Rates by Incident Type..... 6*
NTSB U.S. Transportation Fatalities 7

FAA Air Traffic

FAA Air Traffic Activity..... 8*
Air Route Traffic Control Center Activity..... 9*
50 Busiest FAA Air Traffic Control Towers..... 10*
25 Busiest Contracted Air Traffic Control Towers..... 12*
50 Busiest Radar Approach Control Facilities..... 13*
Automated Flight Service Stations Activity..... 15*

Airports

Number of U.S. Airports..... 16
National Airspace Total System Delays 17*

Aircraft

U.S. Air Carrier Activity..... 18*
U.S. General Aviation and Air Taxi Activity 19*
Aircraft Certification Service..... 20*

Industry Trends

Scheduled U.S. Air Carrier Traffic & Fin. Trends 21*
Aviation Forecasts..... 22*

Commercial Space Transportation

AST Licensed Activity 23*
U.S. Commercial Space Launch Schedule 24*

Airmen

Active Pilots and Nonpilots 25*

FAA Organizational Chart..... Center Fold*

Table of Contents (cont.)

| | |
|-----------------------------------|----|
| FAA Regional Boundaries Map | 28 |
|-----------------------------------|----|

FAA Resources

| | |
|--|-----|
| FAA Employment | 29 |
| FAA Percent Minority and Female Employment | 30 |
| FAA Major Work Force Employment | 31* |
| Labor Relations | 32* |
| FAA Finances | 33* |
| FAA NAS Operational Facilities | 34* |

Organization

| | |
|--|-----|
| FAA Officials—Washington Headquarters | 35* |
| FAA Officials—Major Field Organizations | 38* |
| FAA Officials—International Area Offices | 40* |
| FAA Flight Plan 2009-2013 | 41 |

For further information call ABA-1 (202-267-9105)

*Updated this issue

Distribution: A-WXYZE-3; A-FOF-O(STD)

Aviation Accidents by Type of Operation

| Type of Operation | Year | Jan | Feb | Mar | Apr | May | Jun | Jul | Aug | Sep | Oct | Nov | Dec | Year Total |
|-------------------|------|-----|-----|-----|-----|-----|-----|-----|-----|-----|-----|-----|-----|------------|
| Large Air Carrier | 2008 | 2 | 4 | 0 | 1 | 3 | 3 | 2 | 1 | 2 | 1 | 1 | 6 | 26 |
| | 2009 | 2 | 2 | 3 | 2 | 3 | - | - | - | - | - | - | - | 12 |
| Commuter | 2008 | 0 | 0 | 0 | 1 | 0 | 0 | 0 | 3 | 0 | 1 | 1 | 1 | 7 |
| | 2009 | 0 | 1 | 0 | 0 | 0 | - | - | - | - | - | - | - | 1 |
| Air Taxi | 2008 | 5 | 4 | 4 | 6 | 6 | 9 | 2 | 4 | 9 | 2 | 1 | 5 | 57 |
| | 2009 | 4 | 3 | 5 | 4 | 4 | - | - | - | - | - | - | - | 20 |
| General Aviation | 2008 | 70 | 93 | 111 | 141 | 167 | 181 | 182 | 205 | 137 | 104 | 98 | 77 | 1,566 |
| | 2009 | 79 | 74 | 107 | 126 | 114 | - | - | - | - | - | - | - | 500 |
| Rotorcraft* | 2008 | 8 | 6 | 14 | 12 | 18 | 18 | 16 | 16 | 12 | 12 | 11 | 8 | 151 |
| | 2009 | 9 | 9 | 15 | 11 | 9 | - | - | - | - | - | - | - | 53 |

* Part 135 and US registered general aviation, and US-public use rotorcraft accidents.

Note: Preliminary data and subject to change.
As of: 06/29/09

Source: AAI-220
(202) 267-3279

Aviation Accident Rates by Type of Operation

| Type of Operation | 2005 | | 2006 | | 2007 | | 2008 | | % Chg 08-07 | |
|--------------------|--------|------|--------|------|--------|------|--------|------|-------------|------|
| | Number | Rate | Number | Rate | Number | Rate | Number | Rate | Number | Rate |
| Large Air Carriers | 40 | 20 | 33 | 17 | 28 | 14 | 28 | 14 | -15% | -18% |
| Commuter | 6 | 2 00 | 3 | 1 00 | 3 | 0 99 | 7 | 2 40 | 133% | 140% |
| Air Taxi | 65 | 1 70 | 52 | 1 40 | 62 | 1 50 | 56 | 1 50 | 8% | 7% |
| General Aviation | 1,670 | 7 20 | 1,520 | 6 33 | 1,650 | 6 92 | 1,559 | 7 11 | 3% | 12% |

Accident Rates are per 100,000 Flight Hours Flight hours compiled by FAA
 Rotorcraft rates discontinued, currently under review

Note 2008 data preliminary
 As of 05/31/09

Source NTSB
www.ntsb.gov/aviation/stats.htm

4

Airspace Incidents by Incident Type

| Incident Type | Year | Jan | Feb | Mar | Apr | May | Jun | Jul | Aug | Sep | Oct | Nov | Dec | Year Total |
|-------------------------------|------|-----|-----|-----|-----|-----|-----|-----|-----|-----|-----|-----|-----|------------|
| Near Midair Collisions | 2007 | 6 | 11 | 13 | 5 | 10 | 9 | 10 | 12 | 12 | 6 | 10 | 6 | 110 |
| | 2008 | 7 | 9 | 13 | 5 | 9 | 9 | 4 | 13 | 2 | 7 | 9 | 6 | 93 |
| | 2009 | 2 | 5 | 4 | 6 | 12 | 0 | 0 | 0 | 0 | 0 | 0 | 0 | 29 |
| Pilot Deviations | 2007 | 207 | 181 | 220 | 251 | 281 | 246 | 241 | 286 | 218 | 288 | 246 | 189 | 2,854 |
| | 2008 | 242 | 215 | 257 | 288 | 342 | 287 | 299 | 325 | 306 | 273 | 288 | 240 | 3,362 |
| | 2009 | 259 | 255 | 302 | 249 | 301 | 0 | 0 | 0 | 0 | 0 | 0 | 0 | 1,366 |
| Operational Errors | 2007 | 83 | 94 | 121 | 133 | 115 | 132 | 104 | 128 | 90 | 115 | 98 | 103 | 1,316 |
| | 2008 | 102 | 87 | 142 | 129 | 150 | 115 | 152 | 105 | 90 | 108 | 98 | 98 | 1,376 |
| | 2009 | 95 | 95 | 78 | 109 | 95 | 0 | 0 | 0 | 0 | 0 | 0 | 0 | 472 |
| Vehicle Pedestrian Deviations | 2007 | 24 | 21 | 21 | 21 | 24 | 29 | 28 | 18 | 22 | 22 | 27 | 18 | 275 |
| | 2008 | 27 | 18 | 19 | 21 | 25 | 36 | 34 | 26 | 33 | 30 | 26 | 21 | 316 |
| | 2009 | 17 | 23 | 21 | 27 | 18 | 0 | 0 | 0 | 0 | 0 | 0 | 0 | 106 |
| Surface Incidents | 2007 | 67 | 79 | 84 | 97 | 101 | 109 | 110 | 112 | 89 | 90 | 109 | 80 | 1,127 |
| | 2008 | 97 | 87 | 91 | 95 | 118 | 124 | 129 | 120 | 115 | 95 | 113 | 70 | 1,254 |
| | 2009 | 83 | 78 | 80 | 89 | 75 | 0 | 0 | 0 | 0 | 0 | 0 | 0 | 405 |
| Runway Incursions* | 2007 | 21 | 27 | 31 | 35 | 33 | 38 | 33 | 36 | 26 | 72 | 89 | 65 | 506 |
| | 2008 | 77 | 67 | 74 | 75 | 92 | 101 | 98 | 101 | 98 | 75 | 92 | 57 | 1,007 |
| | 2009 | 77 | 62 | 63 | 77 | 79 | 0 | 0 | 0 | 0 | 0 | 0 | 0 | 358 |

5

Note: Preliminary data and subject to change.

Note: Bolded data will give invalid results based on new RI data compilation.

Source: AJF-A7 (ATO-IT)

(718) 553-3438

*ATO-S

(202) 385-4788

As of: 05/31/09

*As of: 05/31/09

Airspace Incident Rates by Incident Type

| Incident Type | 2005 | | 2006 | | 2007 | | 2008 | | Percent Change | |
|------------------------|--------|------|--------|------|--------|------|--------|------|-----------------|------|
| | Number | Rate | Number | Rate | Number | Rate | Number | Rate | 2007 - 2008 (4) | |
| | | | | | | | | | Number | Rate |
| Operational Errors (1) | 1,497 | 96 | 1,307 | 85 | 1,316 | 86 | 1,376 | 96 | 5% | 12% |
| Pilot Deviations (2) | 2,244 | 1.36 | 2,715 | 1.65 | 2,854 | 1.73 | 3,362 | 2.04 | 18% | 18% |
| Surface Incidents (3) | 944 | 1.51 | 991 | 1.62 | 1,127 | 1.85 | 1,254 | 2.20 | 11% | 19% |

9

(1) Per 100,000 Facility Activities

(2) Per 100,000 Flight Activities

(3) Per 1,000,000 Airport Operations

(4) Calculations use fifteen decimal places for rates (rounded two places for display)

Note: 2006 data preliminary and subject to change

Source: ATO-A (IT)

(202) 385-4802

As of 05/31/09

**National Transportation Safety Board
 2006-2007 U.S. Transportation Fatalities**

| | 2006 | 2007 ¹ |
|--|---------------|-------------------|
| Highway | | |
| Passenger cars | 17,925 | 16,520 |
| Light Trucks and Vans | 12,761 | 12,413 |
| Pedestrians | 4,795 | 4,654 |
| Motorcycles | 4,837 | 5,154 |
| Pedalcycles ² | 772 | 698 |
| Medium and heavy trucks | 805 | 802 |
| Buses | 27 | 37 |
| All Other ³ | 786 | 781 |
| Total..... | 42,708 | 41,059 |
| Grade Crossings ⁴ | (369) | (338) |
| Rail | | |
| Intercity ⁵ | | |
| Trespassers and nontrespassers ⁶ | 582 | 562 |
| Employees and contractors | 23 | 22 |
| Passengers on trains | 2 | 5 |
| Light, heavy, and commuter rail ⁷ | 167 | 219 |
| Total..... | 774 | 808 |
| Marine | | |
| Recreational Boating | 710 | 685 |
| Cargo Transport | 28 | 24 |
| Commercial fishing ⁸ | 44 | 33 |
| Commercial Passengers | 18 | 24 |
| Total..... | 800 | 766 |
| Aviation | | |
| General Aviation | 703 | 491 |
| Airlines | 50 | 1 |
| Air Taxi | 16 | 43 |
| Commuter | 2 | 0 |
| Foreign/Unregistered ⁹ | 13 | 10 |
| Total..... | 784 | 545 |
| Pipeline | | |
| Gas | 19 | 11 |
| Liquids | 0 | 4 |
| Total..... | 19 | 15 |
| GRAND TOTAL..... | 45,085 | 43,193 |

¹ Numbers for 2007 are preliminary estimates. Aviation data from NTSB, marine data from Department of Homeland Security; all other data from DOT. ² Includes bicycles or other cycles. ³ Includes vehicle nonoccupants other than pedestrians and occupant fatalities in other vehicle types, ex. farm or construction equipment. ⁴ Grade crossing fatalities are not counted as a separate category for determining the grand total because they are included in the highway and rail categories, as appropriate. ⁵ Data reported to Federal Rail Administration (FRA). ⁶ Includes persons on railroad property with and without permission. Does not include motor vehicle occupants killed at grade crossings. ⁷ Data reported to the Federal Transit Administration (FTA). Fatalities for commuter rail operations may also be reported to the FRA and may be included in the intercity railroad fatalities. ⁸ Refers to only operational fatalities. ⁹ Includes non-U.S. registered aircraft involved in accidents in the U.S.

Air Traffic

FAA Air Traffic Activity (In Thousands)

| Aircraft Handled by | Jan-June 2009* | Jan-June 2008 | Jan-Dec 2008 |
|--------------------------------------|-------------------|------------------|-----------------|
| FAA ARTCC's | | | |
| Air Carrier | 11 062 | 11 889 | 23 306 |
| Air Taxi | 4 216 | 5 145 | 9 754 |
| General Aviation | 3 057 | 3 823 | 7 274 |
| Military | 1 506 | 1 910 | 3 476 |
| TOTAL | 19,841 | 22,767 | 43,810 |
| Airport Operations | | | |
| Logged by FAA Towers | | | |
| Air Carrier | 6 219 | 6 741 | 13 274 |
| Air Taxi | 3 975 | 4 679 | 9 007 |
| General Aviation | 7 924 | 9 081 | 17 818 |
| Military | 753 | 726 | 1 452 |
| TOTAL . | 18,871 | 21,227 | 41,551 |
| Airport Operations | | | |
| (Contracted) | | | |
| Air Carrier | 121 | 127 | |
| Air Taxi | 655 | 785 | |
| General Aviation | 5 688 | 6 375 | |
| Military | 526 | 523 | |
| TOTAL | 6,990 | 7,810 | |
| Instrument Operations | | | |
| Logged by FAA Towers | | | |
| Air Carrier | 6 282 | 7 232 | 13 860 |
| Air Taxi | 4 595 | 5 469 | 10 497 |
| General Aviation | 6 670 | 7 590 | 15 194 |
| Military | 1 144 | 1 203 | 2 315 |
| TOTAL ... | 18,691 | 21,494 | 41,866 |
| Flight Services | | | |
| Logged by. ** | | | |
| Flight Service Stations | 278 | 340 | 731 |
| Automated Flight Service Stations | 4 164 | 493 | 5 334 |
| TOTAL. . | 4,442 | 833 | 6,065 |

*Preliminary

As of 07/01/09

**As of 07/10/09

Source APO-130

(202) 267-3350

ATO A/AJA

(202) 385-4734

Air Route Traffic Control Center Activity

| CY 2008 Rank | Center | Aircraft Handled (000's) | | |
|--------------------|---------------------|--------------------------|------------------|-----------------|
| | | Jan-June 2009* | Jan-June 2008 | Jan-Dec 2008 |
| 1 | Atlanta, GA | 1,397 | 1,569 | 3,016 |
| 2 | New York, NY | 1,355 | 1,512 | 2,940 |
| 3 | Leesburg, VA (DC) | 1,292 | 1,442 | 2,778 |
| 4 | Chicago, IL | 1,132 | 1,303 | 2,560 |
| 5 | Cleveland, OH | 1,070 | 1,291 | 2,473 |
| 6 | Indianapolis, IN | 985 | 1,281 | 2,427 |
| 7 | Miami, FL | 1,186 | 1,340 | 2,395 |
| 8 | Jacksonville, FL | 1,130 | 1,304 | 2,368 |
| 9 | Los Angeles, CA | 979 | 1,170 | 2,203 |
| 10 | Memphis, TN | 1,021 | 1,118 | 2,197 |
| 11 | Houston, TX | 991 | 1,120 | 2,132 |
| 12 | Fort Worth, TX | 937 | 1,053 | 2,053 |
| 13 | Minneapolis, MN | 869 | 975 | 1,955 |
| 14 | Kansas City, KS | 850 | 983 | 1,909 |
| 15 | Nashua, NH (Boston) | 832 | 910 | 1,844 |
| 16 | Denver, CO | 817 | 919 | 1,805 |
| 17 | Oakland, CA | 718 | 848 | 1,637 |
| 18 | Albuquerque, NM | 725 | 851 | 1,615 |
| 19 | Salt Lake City, UT | 647 | 730 | 1,434 |
| 20 | Seattle, WA | 564 | 648 | 1,275 |
| 21 | Anchorage, AK | 235 | 278 | 558 |
| 22 | Guam ** | 109 | 123 | 164 |

*Preliminary

**Center Radar Approach Control (CERAP)

As of 07/01/09

Source APO-130
(202) 267-3350

50 Busiest FAA Airport Traffic Control Towers

| CY 2008 Rank | Tower and State | Airport Operations (000's) | | |
|--------------------|---------------------------------|----------------------------|------------------|-----------------|
| | | Jan-June 2009* | Jan-June 2008 | Jan-Dec 2008 |
| 1 | Hartsfield-Jackson Atl Intl, GA | 477 | 489 | 978 |
| 2 | Chicago/O'Hare Intl, IL | 407 | 442 | 882 |
| 3 | Dallas/Ft Worth Intl, TX | 312 | 326 | 655 |
| 4 | Denver International, CO | 303 | 315 | 626 |
| 5 | Los Angeles International, CA | 267 | 328 | 623 |
| 6 | Las Vegas/McCarran Intl, NV | 253 | 302 | 579 |
| 7 | Houston/G Bush Intercont'l, TX | 268 | 299 | 578 |
| 8 | Charlotte/Douglas Intl, NC | 255 | 270 | 538 |
| 9 | Phoenix International, AZ | 231 | 264 | 502 |
| 10 | Philadelphia Intl, PA | 235 | 248 | 492 |
| 11 | Detroit Metro Wayne Co, MI | 218 | 235 | 463 |
| 12 | Minneapolis-St Paul Intl, MN | 220 | 227 | 450 |
| 13 | John F Kennedy Intl, NY | 212 | 221 | 447 |
| 14 | Newark International, NJ | 208 | 221 | 442 |
| 15 | Washington Dulles Intl, VA | 184 | 202 | 392 |
| 16 | Salt Lake City Intl, UT | 184 | 202 | 390 |
| 17 | San Francisco Intl, CA | 184 | 193 | 388 |
| 18 | Van Nuys, CA | 172 | 207 | 387 |
| 19 | La Guardia, NY | 175 | 194 | 384 |
| 20 | Phoenix-Deer Valley, AZ | 207 | 198 | 377 |
| 21 | Boston/Logan Intl, MA | 174 | 187 | 375 |
| 22 | Miami International, FL | 177 | 194 | 372 |
| 23 | Memphis International, TN | 169 | 184 | 363 |
| 24 | Seattle Tacoma Intl, WA | 156 | 172 | 343 |
| 25 | Long Beach/Daughtery, CA | 140 | 174 | 345 |

*Preliminary

Source APO-130
(202) 267-3350

As of 07/01/09

50 Busiest FAA Airport Traffic Control Towers

| CY 2008 Rank | Tower and State | Airport Operations (000's) | | |
|--------------------|--------------------------------|----------------------------|------------------|-----------------|
| | | Jan-June 2009* | Jan-June 2008 | Jan-Dec 2008 |
| 26 | Orlando International, FL | 158 | 188 | 345 |
| 27 | Daytona Beach Int'l, FL | 171 | 172 | 340 |
| 28 | Tulsa/Riverside, OK | 129 | 161 | 334 |
| 29 | Mesa/Falcon Field, AZ | 136 | 174 | 319 |
| 30 | Denver/Centennial, CO | 123 | 160 | 319 |
| 31 | Santa Ana/John Wayne, CA | 142 | 169 | 316 |
| 32 | Miami/Kendall-Tamiami, FL | 114 | 162 | 309 |
| 33 | Seattle/Boeing Field, WA | 128 | 145 | 296 |
| 34 | Fort Lauderdale/Hollywood, FL | 138 | 164 | 296 |
| 35 | Covington/Cincinnati Int'l, KY | 113 | 151 | 286 |
| 36 | Honolulu International, HI | 139 | 146 | 281 |
| 37 | Washington National, DC | 137 | 139 | 278 |
| 38 | Baltimore/Wash Int'l, MD | 130 | 142 | 278 |
| 39 | Anchorage International, AK | 116 | 135 | 278 |
| 40 | Metropolitan Oakland Int'l, CA | 118 | 144 | 274 |
| 41 | Prescott/Love Field, AZ | 126 | 134 | 272 |
| 42 | Chicago Midway, IL | 118 | 138 | 268 |
| 43 | Portland-Hillsboro, OR | 116 | 134 | 261 |
| 44 | Portland International, OR | 112 | 129 | 253 |
| 45 | Lambert-St Louis Int'l, MO | 106 | 128 | 248 |
| 46 | San Diego/Gillespie Field, CA | 108 | 121 | 245 |
| 47 | Grand Forks International, ND | 176 | 129 | 241 |
| 48 | Tampa International, FL | 105 | 132 | 238 |
| 49 | Cleveland Hopkins Int'l, OH | 100 | 122 | 236 |
| 50 | San Diego/Montgomery, CA | 99 | 118 | |

25 Busiest Contracted Airport Traffic Control Towers

| CY 2008 Rank | Tower and State | Airport Operations (000's) | |
|--------------------|---------------------------------|----------------------------|------------------|
| | | Jan-June 2009* | Jan-June 2008 |
| 1 | Chandler Municipal, AZ | 107 | 127 |
| 2 | Phoenix/Williams Gateway, AZ | 96 | 119 |
| 3 | New Smyrna Beach Muni, FL | 80 | 97 |
| 4 | Phoenix-Goodyear Muni, AZ | 93 | 87 |
| 5 | Hollywood/North Perry, FL | 96 | 94 |
| 6 | Tucson/Ryan Field, AZ | 61 | 101 |
| 7 | San Antonio/Stinson Field, TX | 79 | 89 |
| 8 | Ormond Beach Municipal, FL | 81 | 79 |
| 9 | New Iberia/Acadiana Rgnl, LA | 69 | 78 |
| 10 | Titusville/Space Coast Rgnl, FL | 75 | 78 |
| 11 | Orlando/Kissimmee Muni, FL | 66 | 86 |
| 12 | Melbourne International, FL | 75 | 75 |
| 13 | Glendale Municipal, AZ | 60 | 66 |
| 14 | Jacksonville/Craig Muni, FL | 55 | 72 |
| 15 | San Carlos, CA | 52 | 68 |
| 16 | Kailua/Kona International, HI | 49 | 68 |
| 17 | Naples Municipal, FL | 59 | 70 |
| 18 | Ramona Airport, CA | 59 | 64 |
| 19 | Atwater/Castle AFB, CA | 46 | 70 |
| 20 | Hyannis, MA | 54 | 58 |
| 21 | Denton, TX | 73 | 53 |
| 22 | Lakeland/Linder Regional, FL | 59 | 68 |
| 23 | Arlington Municipal, TX | 41 | 66 |
| 24 | Pompano Beach Airpark, FL | 48 | 64 |
| 25 | McKinney Municipal, TX | 45 | 60 |

*Preliminary

As of 07/01/09

50 Busiest Radar Approach Control Facilities

| CY 2008 Rank | Facilities/State | Tracon Ops (000s) | | |
|--------------------|--------------------------------|-------------------|------------------|-----------------|
| | | Jan-June 2009* | Jan-June 2008 | Jan-Dec 2008 |
| 1 | Southern Calif TRACON, CA | 963 | 1,134 | 2,168 |
| 2 | New York TRACON, NY | 877 | 990 | 1,973 |
| 3 | Potomac TRACON, DC | 725 | 796 | 1,577 |
| 4 | Northern Calif TRACON, CA | 704 | 777 | 1,533 |
| 5 | Atlanta TRACON, GA | 630 | 679 | 1,337 |
| 6 | Chicago TRACON, IL | 574 | 639 | 1,271 |
| 7 | Dallas/Ft Worth, TRACON, TX | 519 | 569 | 1,133 |
| 8 | Houston TRACON, TX | 446 | 487 | 956 |
| 9 | Miami International, FL | 445 | 499 | 923 |
| 10 | Denver TRACON, CO | 421 | 413 | 839 |
| 11 | Phoenix TRACON, AZ | 336 | 360 | 689 |
| 12 | Philadelphia International, PA | 313 | 340 | 673 |
| 13 | Las Vegas TRACON, NV | 292 | 345 | 664 |
| 14 | Charlotte/Douglas Int'l, NC | 302 | 328 | 649 |
| 15 | Boston TRACON, MA | 285 | 316 | 640 |
| 16 | Detroit TRACON MI | 277 | 310 | 609 |
| 17 | Minneapolis TRACON, MN | 272 | 286 | 570 |
| 18 | Seattle/Tacoma TRACON, WA | 236 | 261 | 521 |
| 19 | Tampa International, FL | 241 | 285 | 510 |
| 20 | San Juan CERAP, PR | 179 | 316 | 494 |
| 21 | Orlando International, FL | 56 | 384 | 711 |
| 22 | Salt Lake City TRACON, UT | 223 | 246 | 479 |
| 23 | Memphis International, TN | 195 | 211 | 421 |
| 24 | Covington/Cincinnati Int'l, KY | 160 | 209 | 403 |
| 25 | San Antonio Int'l, TX | 184 | 203 | 396 |

* Preliminary

As of 07/01/09

50 Busiest Radar Approach Control Facilities

| CY 2008 Rank | Facilities/State | Tracon Ops (000's) | | |
|--------------------|---------------------------------|--------------------|------------------|-----------------|
| | | Jan-June 2009* | Jan-June 2008 | Jan-Dec 2008 |
| 26 | Jacksonville Int'l, FL | 182 | 211 | 388 |
| 27 | St Louis TRACON, MO | 169 | 195 | 386 |
| 28 | Daytona Beach Int'l FL | 178 | 184 | 354 |
| 29 | Portland TRACON, OR | 148 | 162 | 325 |
| 30 | Austin, TX | 126 | 166 | 316 |
| 31 | Cleveland Hopkins Int'l, OH | 132 | 156 | 310 |
| 32 | Palm Beach International, FL | 141 | 181 | 305 |
| 33 | Milwaukee/Gen Mitchell Intl, WI | 127 | 150 | 304 |
| 34 | Corpus Christi, TX | 154 | 158 | 304 |
| 35 | Pensacola TRACON, FL | 151 | 147 | 293 |
| 36 | Raleigh-Durham Int'l, NC | 127 | 153 | 293 |
| 37 | Indianapolis International, IN | 126 | 147 | 292 |
| 38 | Pittsburgh International, PA | 126 | 146 | 290 |
| 39 | Port Columbus Int'l, OH | 115 | 152 | 286 |
| 40 | Anchorage TRACON, AK | 121 | 141 | 286 |
| 41 | Kansas City International, MO | 123 | 149 | 285 |
| 42 | Nashville International, TN | 117 | 136 | 264 |
| 43 | Tucson TRACON, AZ | 116 | 144 | 259 |
| 44 | Norfolk International, VA | 117 | 128 | 253 |
| 45 | Honolulu Control Facility, HI | -- | 253 | 253 |
| 46 | Yankee TRACON, CT | 106 | 123 | 248 |
| 47 | Oklahoma City/Will Rogers, OK | 105 | 122 | 239 |
| 48 | Tulsa International OK | 107 | 115 | 239 |
| 49 | Albuquerque Int'l, NM | 112 | 123 | 238 |
| 50 | Dayton International, OH | 89 | 118 | 235 |

Automated Flight Service Stations Activity

| CY 2008 Rank | AFSS/State | Flight Services (000's) | | |
|--------------------|--------------------|-------------------------|-----------------|------------------|
| | | Jan-May 2009* | Jan-May 2008 | Jan-Dec 2008* |
| 1 | Washington Hub, VA | 3184 | 0 | 4778 |
| 2 | Kenai, AK | 101 | 117 | 317 |
| 3 | Fairbanks, AK | 51 | 48 | 144 |
| 4 | Juneau, AK | 25 | 33 | 95 |

* Preliminary

Source ATX-400

**Closed Reopen(ed)(ing) (No longer providing data)

(202) 385-4734

***Closed

Automated International Flight Service Station--AIFSS

As of 05/31/09

Airports

Number of U.S. Airports (As of December 31)

| | 2008 | 2007 | 2006 |
|---|---------------|---------------|---------------|
| Total Airports..... | 19 930 | 20,341 | 19 983 |
| Airports | 13 589 | 13 822 | |
| Heliports | 5 568 | 5 708 | |
| Seaplane Bases | 503 | 527 | |
| Gliderports | 35 | 35 | |
| Stolports | 82 | 87 | |
| Balloonports | 14 | 15 | |
| Ultralight Flightparks | 139 | 147 | |
| Total Civil Public Use Airports | 5 202 | 5 221 | 5 233 |
| Civil Public Use Part 139 | 560 | 565 | |
| Civil Public Use Non-Part 139 | 4 642 | 4 656 | |
| Civil Public use airports abandoned | 16 | 18 | 27 |
| Newly Established Public Use | 3 | 9 | |
| Total Civil Private Use Airports | 14 451 | 14 839 | 14 757 |
| Civil Private use airports abandoned | 461 | 297 | 133 |
| Newly Established Private Use | 151 | 274 | |
| Military Airports | 277 | 281 | |

Note: Format change with 2007 data

Source AAS-100

(202) 267-8752

As of 12/31/08

National Airspace Total System Delays

| Year | Jan | Feb | Mar | Apr | May | Jun | Jul | Aug | Sep | Oct | Nov | Dec | YTD Total |
|-------|--------|--------|--------|--------|--------|--------|--------|--------|--------|--------|--------|--------|--------------|
| 2009* | 26,704 | 30,131 | 43,481 | 48,612 | 47,867 | 47,121 | | | | | | | 243,916 |
| 2008 | 39,788 | 46,963 | 43,868 | 43,114 | 44,214 | 68,565 | 64,627 | 50,108 | 38,053 | 34,689 | 37,222 | 43,387 | 554,598 |
| 2007 | 32,927 | 30,071 | 39,558 | 39,340 | 44,055 | 58,824 | 54,689 | 52,875 | 38,896 | 55,140 | 46,880 | 47,931 | 541,186 |
| 2006 | 29,463 | 24,705 | 37,218 | 35,132 | 40,669 | 48,096 | 47,606 | 46,547 | 48,092 | 51,053 | 43,482 | 39,797 | 491,860 |
| 2005 | 32,121 | 30,176 | 34,633 | 25,887 | 30,920 | 48,922 | 58,471 | 45,328 | 32,949 | 34,221 | 34,273 | 29,766 | 437,667 |

Delays of 15 minutes or longer

* Preliminary information that is subjected to change

As of: 06/20/09

Source: ATT-220
(703) 904-4470

Aircraft

U.S. Air Carrier Activity

| | CY 2008 | CY 2007 | CY 2006 |
|---|---------------|---------------|---------------|
| Type of Carrier | | | |
| Domestic, flag, supplemental, and cargo air carriers..... | 7,255 | 7,449 | 7,516 |
| Commuter Air Carriers and Air Taxis..... | 11,386 | 11,483 | 11,554 |
| Total Number of Aircraft¹..... | 18,641 | 18,932 | 19,070 |
| Type of Aircraft | | | |
| Jet..... | 9,990 | 9,999 | 9,939 |
| Turboprop..... | 2,688 | 2,817 | 2,870 |
| Piston..... | 3,213 | 3,410 | 3,583 |
| Rotary Wing..... | 2,750 | 2,706 | 2,678 |
| Air Carrier Traffic Statistics² (Millions)* | | | |
| Passenger miles flown..... | 811,593 | 836,335 | 806,306 |
| Passenger enplanements..... | 753 | 767 | 745 |
| Ton miles..... | 120,375 | 123,511 | 120,587 |
| Aircraft miles flown..... | 8,279 | 8,315 | 8,146 |
| Passenger load factor ³ | | | |
| Domestic..... | 79.5% | 79.8% | 79.2% |
| International..... | 79.8% | 80.4% | 79.5% |

¹ Source: Vital Information System

² Includes domestic and international scheduled and non-scheduled service, domestic, flag, supplemental, cargo air carriers and commuters - CY 08 estimated.

³ Proportion of aircraft seating capacity that is sold.

As of: 03/01/2009

Source: AFS-40
(202) 385-4514
*BTS (K-25)
(202) 366-8513

**U.S. General Aviation
and Air Taxi Activity
(Calendar Years)**

| | Estimated Active Aircraft (thousands) | | Estimated Hours Flown (Millions) | |
|-------------------------|---|-------|--|------|
| | 2007 | 2006 | 2007 | 2006 |
| Total | 231.6 | 221.9 | 27.9 | 27.7 |
| By Type Aircraft | | | | |
| Piston | 166.9 | 163.7 | 16.3 | 16.5 |
| Turboprop | 9.5 | 8.1 | 2.7 | 2.2 |
| Jet | 10.4 | 10.4 | 3.9 | 4.1 |
| Rotary Wing | 9.6 | 9.2 | 3.2 | 3.4 |
| Experimental | 23.2 | 23.0 | 1.3 | 1.2 |
| Light Sport | 6.1 | 1.3 | 0.3 | 0.1 |
| Other | 5.9 | 6.3 | 0.2 | 0.2 |
| By Type Flying | | | | |
| Corporate | 10.9 | 11.1 | 3.2 | 3.1 |
| Business | 25.0 | 24.4 | 3.1 | 3.2 |
| Personal | 152.5 | 149.0 | 8.7 | 9.1 |
| Instructional | 14.7 | 14.3 | 3.8 | 4.3 |
| Aerial Application | 4.2 | 3.4 | 1.4 | 0.9 |
| Aerial Observation | 5.2 | 4.4 | 1.2 | 1.2 |
| Aerial Other | 1.4 | 0.8 | 0.4 | 0.2 |
| External Load | 0.2 | 0.2 | 0.2 | 0.1 |
| Other Work | 0.9 | 0.7 | 0.1 | 0.2 |
| Sightseeing | 1.3 | 0.9 | 0.2 | 0.2 |
| Air Tours | 0.9 | 0.4 | 0.5 | 0.3 |
| Air Taxi | 7.9 | 7.4 | 3.1 | 2.7 |
| Air Medical Services | 0.9 | 16.0 | 0.5 | 0.8 |

As of 02/18/09

AAI-220
(202) 267-8659

**Aircraft Certification Service
Aircraft Certification Mission and
Program Files**

| | FY 2008 | FY 2007 |
|--|--------------|--------------|
| Type Certificates/Supplemental Type Certificates Issued | 1,272 | 1,912 |
| Other Design Approvals Issued | 3,184 | 2,941 |
| Production Approvals (Including Amendments) Issued | 2,642 | 2,499 |
| Airworthiness Certificates Issued | 597 | 788 |
| New Airworthiness Directives (AD) Issued | 461 | 1,036 |
| New Designees (Representative of the Administrator) Appointed | 374 | 374 |
| Total Active Designees | 3,967 | 3,969 |

As of 03/12/09

Source AIR-530
202-267-3027

Industry Trends

Scheduled U.S. Air Carrier Traffic* and Financial** Trends

(In Billions)

| | 1st Half FY 2009 | 1st Half FY 2008 | Numerical Change | Percent Change |
|---------------------------------|---------------------|---------------------|---------------------|-------------------|
| TRAFFIC | | | | |
| ASM'S | | | | |
| Majors | 433.10 | 468.50 | (35.40) | (7.6) |
| Nationals | 26.77 | 32.74 | (5.97) | (18.2) |
| Regionals | 10.06 | 12.08 | (2.02) | (16.7) |
| Totals..... | 469.93 | 513.32 | (43.39) | 9.2 |
| RPM's | | | | |
| Majors | 333.01 | 364.54 | (31.53) | (8.6) |
| Nationals | 19.78 | 24.83 | (5.05) | (20.3) |
| Regionals | 6.87 | 8.10 | (1.23) | (15.2) |
| Totals..... | 359.66 | 397.47 | (37.81) | 10.5 |
| Load Factor (in percent) | | | | |
| Majors | 76.9% | 77.8% | (0.9) | |
| Nationals | 73.9% | 75.8% | (1.9) | |
| Regionals | 68.3% | 67.1% | 1.2 | |
| Totals..... | 76.5% | 77.4% | (0.9) | |
| FINANCIAL | | | | |
| Revenues | | | | |
| Majors | \$72.31 | \$80.39 | (\$8.08) | (10.1) |
| Nationals | \$5.39 | \$6.72 | (\$1.33) | (19.8) |
| Regionals | \$0.92 | \$1.23 | (\$0.31) | (25.2) |
| Totals..... | \$78.62 | \$88.34 | (\$9.72) | (11.0) |
| Expenses | | | | |
| Majors | \$73.80 | \$80.50 | (\$6.70) | (8.3) |
| Nationals | \$5.33 | \$6.65 | (\$1.32) | (19.8) |
| Regionals | \$0.85 | \$1.33 | (\$0.48) | (36.1) |
| Totals..... | \$79.98 | \$88.48 | (\$8.50) | (9.6) |
| Operating Profit/Loss | | | | |
| Majors | (\$1.49) | (\$0.11) | (\$1.38) | |
| Nationals | \$0.06 | \$0.07 | (\$0.01) | |
| Regionals | \$0.07 | (\$0.10) | \$0.17 | |
| Totals..... | (\$1.36) | (\$0.14) | (\$1.22) | |

*Effective FY 2003 DOT mandated small certificated and commuter air carriers (carriers with aircraft size less than 60 seats) report traffic results on DOT Form 41. Financial results for these carriers are report on DOT Form 299C and are excluded from this report.

Source APO-110

As of 07/06/09

21

(202) 493-4236

Aviation Forecasts

| | Estimated FY 2008 | Forecast FY 2012 |
|--|----------------------|---------------------|
| FAA FACILITY WORKLOAD | | |
| Aircraft Handled by FAA ARTCC's (Millions) | | |
| Air Carrier | 23.8 | 25.5 |
| Air Taxi/Commuter | 10.2 | 9.3 |
| General Aviation | 7.7 | 7.6 |
| Military | 3.6 | 3.6 |
| Total | 45.3 | 46.1 |
| Operations Logged by FAA/Contract Towers (Millions) | | |
| Airport | 58.5 | 57.6 |
| Instrument | 43.6 | 42.8 |
| CIVIL AVIATION ACTIVITY | | |
| Certificated Route Air Carrier | | |
| Revenue Passenger Enplanements (Millions) | 596.6 | 611.8 |
| Revenue Passenger Miles (Billions) | 753.2 | 796.3 |
| Air Carrier Aircraft..... | 4,692 | 4,832 |
| General Aviation Estimated | | |
| Hours Flown (Millions)* | 27.8 | 29.2 |
| Active Aircraft (Thousands)* | 234.0 | 243.2 |
| ESTIMATED FUEL CONSUMED BY U.S. DOMESTIC CIVIL AVIATION (Millions of Gallons) | | |
| Jet Fuel | | |
| Air Carrier | 19,339 | 19,048 |
| General Aviation | 1,550 | 1,901 |
| Aviation Gas | | |
| Air Carrier | 2 | 2 |
| General Aviation | 349 | 336 |
| Active Pilots (Thousands)* | 613,746 | 608,090 |

*Calendar Year

As of 03/30/09

Source APO-110
(202) 493-4236

U.S. Commercial Space Transportation FAA Licensed Activity

| | CY 2009 (Projected) | CY 2008 | CY 2007 |
|--|---------------------------|------------|------------|
| Licensed Commercial Launches | | | |
| TOTAL | 9 | 11 | 4 |
| Number of Orbital Launches | 9 | 11 | 4 |
| Number of Suborbital Launches | 0 | 0 | 0 |
| By Launch Vehicle Type | | | |
| Delta II, IV (Boeing Company) | 2 | 2 | 3 |
| Atlas V (Lockheed Martin) | 1 | 1 | 0 |
| Zenit 3SL (Sea Launch) | 3 | 5 | 1 |
| Falcon 9 (SpaceX) | 2 | NA | NA |
| Falcon 1 (SpaceX) | 1 | 2 | 0 |
| Pegasus XL (Orbital Sciences) | 0 | 1 | 0 |
| By Launch Site (Federal) | | | |
| Cape Canaveral AF Station, FL | 4 | 1 | 0 |
| Vandenberg AFB, CA | 1 | 2 | 3 |
| Kwajalein / Marshall Islands | 1 | 3 | 0 |
| By Launch Site (Commercial) | | | |
| Pacific Ocean | 3 | 5 | 1 |
| Other Commercial | 0 | 0 | 0 |
| Experimental Permit Launches | | | |
| TOTAL (not part of license total) | 5 to 10 | 5 | 9 |

As of 6/26/09

Source: AST
(202) 267-7989

| United States Commercial Space Launch Schedule, CY 2009 (launch dates are subject to change) | | |
|--|---|--|
| Payload (Operator)/ Description | Launch Company/ Vehicle | Launch Date/ Launch Site (Status) |
| SICRAL 1B (Italy) Comm. Satellite | Sea Launch Zenit 3SL | April 20, 2009 Pacific Ocean Platform (Success) |
| GOES O (USA) Weather Satellite | Boeing Launch Services Delta IV | June 27, 2009 Cape Canaveral AFS (Success) |
| RazakSat (Malaysia) Remote Sensing Sat | Space X Falcon 1 | July 13, 2009 Reagan Test Site (Success) |
| Worldview 2 (USA) Remote Sensing Sat | Boeing Launch Services Delta II | October 2009 Vandenberg AFB |
| Intelsat 14 (USA) Comm. Satellite | Lockheed Martin Commercial Launch Services Atlas 5 | October 2009 Cape Canaveral AFS |
| Eutelsat W7 (France) Comm. Satellite | Sea Launch Zenit 3SL | 4 th Quarter 2009 Pacific Ocean Platform |
| Demonstration (USA) Demonstration | Space X Falcon 9 | 4 th Quarter 2009 Cape Canaveral AFS |

As of: 8/15/09

Source: AST
(202) 267-7989

**Active Pilots and Nonpilots
(As of 31 December)**

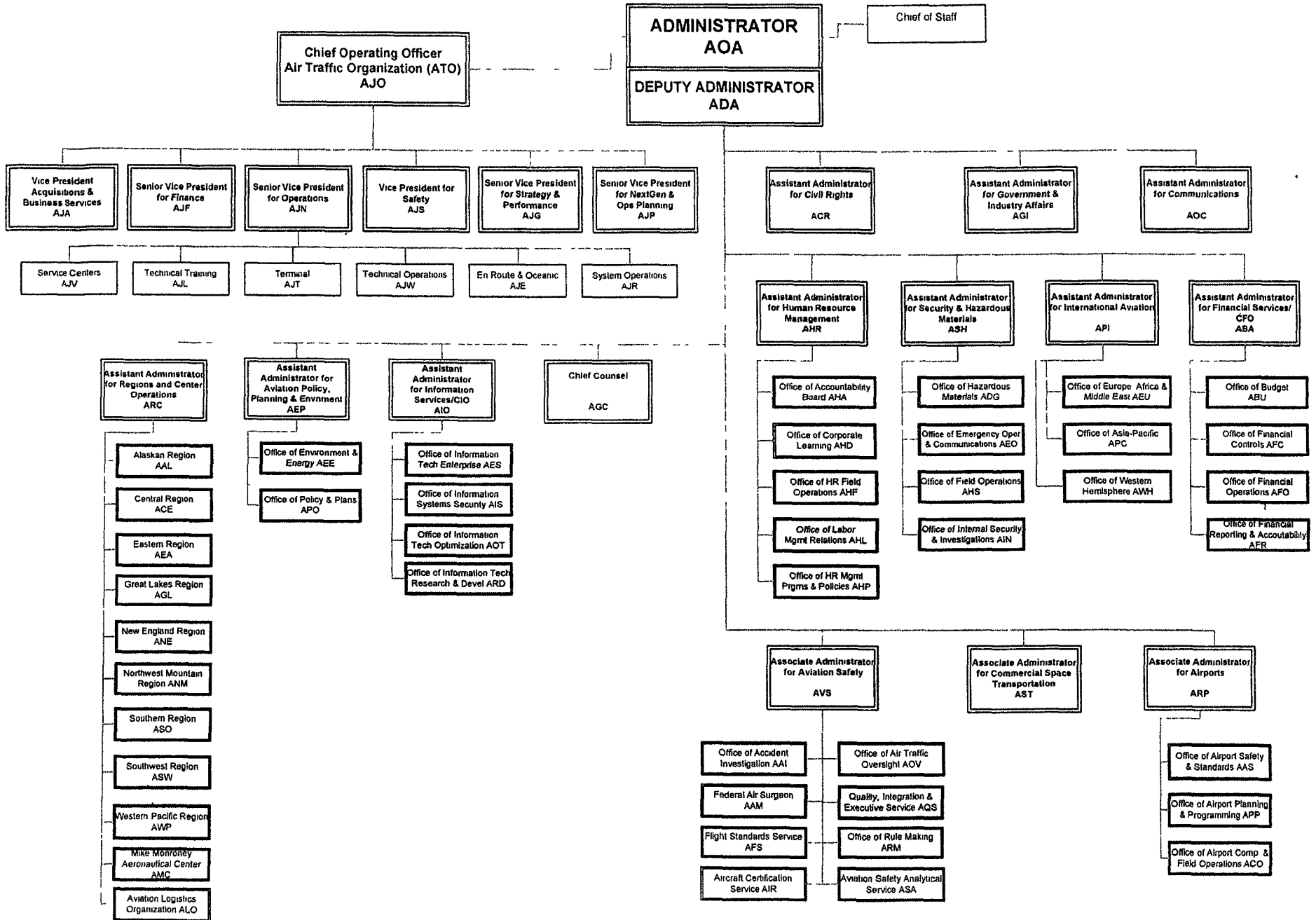
| | 2008 | | 2007 | |
|--------------------------------|----------------|----------------|----------------|----------------|
| | Total | Women | Total | Women |
| Pilot-Total | 613,746 | 37,981 | 590,349 | 35,784 |
| Student | 80 989 | 9 127 | 84 339 | 9 559 |
| Private | 222 596 | 15 015 | 211,096 | 13 694 |
| Commercial | 124 746 | 8 083 | 115 127 | 7 101 |
| Airline Transport | 146 838 | 5 657 | 143,953 | 5 349 |
| Nonpilot-Total | 678,181 | 144,968 | 666,559 | 138,452 |
| Mechanic | 326 276 | 6 740 | 322 852 | 6 524 |
| Repairmen | 41 056 | 2 284 | 40 277 | 2 193 |
| Ground Instructor | 74 983 | 5 785 | 74 544 | 5 726 |
| Flight Attendant | 154 671 | 124 419 | 147 013 | 118 426 |
| Flight Engineer | 53 135 | 1 894 | 54 394 | 1 901 |
| Flight Instructor | 93,202 | 6,293 | 92,175 | 6,232 |

As of 12/31/2008

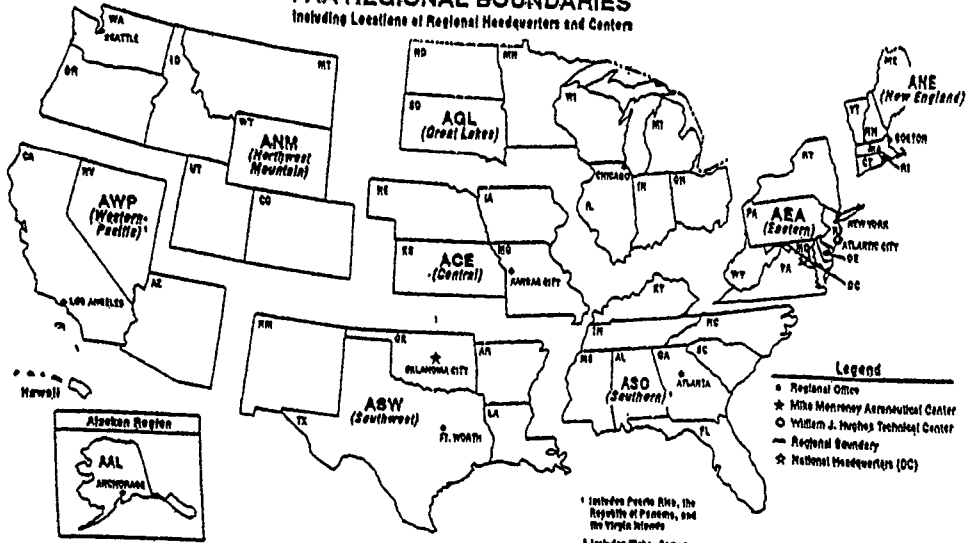
25

Airmen

FEDERAL AVIATION ADMINISTRATION



U. S. DEPARTMENT OF TRANSPORTATION
 Federal Aviation Administration
FAA REGIONAL BOUNDARIES
 Including Locations of Regional Headquarters and Centers



FAA Resources

FAA Employment (Permanent Employees)¹

| | FY08 | FY07 |
|---|---------------|---------------|
| Line of Business | | |
| Air Traffic Organization (ATO) | 33,593 | 33,090 |
| Aviation Safety (AVS) | 7,013 | 6,842 |
| Airports (ARP) | 479 | 471 |
| Comm Space Transportation (AST) | 61 | 56 |
| Staff Offices** | 4,126 | 3,964 |
| Total | 45,272 | 44,423 |
| Region/Center/Headquarters (included in above total) | | |
| Aeronautical Center | 3,317 | 3,224 |
| Alaskan | 898 | 1,145 |
| Central | 2,134 | 2,162 |
| Eastern | 4,635 | 4,612 |
| Great Lakes | 5,603 | 5,569 |
| New England | 1,431 | 1,451 |
| Northwest Mountain | 4,058 | 3,914 |
| Southern | 6,859 | 6,600 |
| Southwest | 4,878 | 4,756 |
| Western-Pacific | 4,534 | 4,580 |
| Washington Headquarters ² | 3,395 | 5,363 |
| Washington Headquarters (Field) | 2,510 | n/a |
| Technical Center | 1,020 | 1,047 |

¹ Full time permanent and part time permanent employees only

² Washington Headquarters employees physically located in Orville/Wilbur Wright Buildings and surrounding areas

** Staff Offices include ABA ACR ADA, AEP AGC AGI AHR AIO AOA, AOC APO ARC ASH

Disclaimer This is a statistical snapshot of the workforce demographics. The use of this data in any employment decision is PROHIBITED without the express written authorization of the Deputy Chief Counsel for Operations AGC-3

As of: 09/30/08

Source: AHP-100
(202) 267-8257

FAA Percent Minority & Female Employment¹

| Lines of Business/Region/Center/Headquarters | % Minority | | % Female | |
|--|-------------|-------------|-------------|-------------|
| | FY08 | FY07 | FY08 | FY07 |
| Air Traffic Organization (ATO) | 20.0 | 20.0 | 21.0 | 20.0 |
| Aviation Safety (AVS) | 20.0 | 19.0 | 27.0 | 27.0 |
| Airports (ARP) | 29.0 | 29.0 | 40.0 | 40.0 |
| Commercial Space Transportation (AST) | 39.0 | 41.0 | 36.0 | 34.0 |
| Staff Offices | 32.0 | 32.0 | 53.0 | 53.0 |
| Total | 22.0 | 21.0 | 25.0 | 24.0 |
| Aeronautical Center | 22.0 | 22.0 | 38.0 | 39.0 |
| Alaskan | 16.0 | 15.0 | 22.0 | 20.0 |
| Central | 13.0 | 14.0 | 22.0 | 23.0 |
| Eastern | 16.0 | 16.0 | 18.0 | 18.0 |
| Great Lakes | 11.0 | 11.0 | 20.0 | 20.0 |
| New England | 8.0 | 8.0 | 21.0 | 21.0 |
| Northwest Mountain | 15.0 | 14.0 | 24.0 | 24.0 |
| Southern | 25.0 | 24.0 | 21.0 | 19.0 |
| Southwest | 25.0 | 24.0 | 21.0 | 21.0 |
| Western-Pacific | 32.0 | 31.0 | 39.0 | 20.0 |
| Washington Headquarters ² | 31.0 | 31.0 | 39.0 | 40.0 |
| Technical Center | 22.0 | 21.0 | 32.0 | 32.0 |

¹ All FAA employees

² Washington Headquarters employees physically located in Orville/Wilbur Wright Buildings and surrounding areas

As of 09/30/08

Source AHP-100
(202) 267-8257

Major Work Force Employment

| | Employment | | | | |
|--|------------|--------|--------|------------------------|------------------|
| | FY09 | FY08 | FY07 | %Chg FY09 - FY08 | Actual Change |
| Controller Work Force* | | | | | |
| Controllers | 15,596 | 15,381 | 14,874 | 1.4% | 215 |
| Traffic Management Coordinators | 561 | 552 | 565 | 1.6% | 9 |
| Operations Supervisors | 1,905 | 1,854 | 1,788 | 2.8% | 51 |
| Flight Service Stations (FSS) | 169 | 181 | 181 | -6.6% | -12 |
| Field Maintenance | | | | | 0 |
| PASS Technical | 6,094 | 6,106 | 6,090 | -0.2% | -12 |
| NATCA Engineers | 1,235 | 1,197 | 909 | 3.2% | 38 |
| 1st Line Supervisors | 661 | 674 | 522 | -1.9% | -13 |
| Airports Work Force | 479 | 479 | 471 | 0.0% | 0 |
| Aircraft Certification** | 1,209 | 1,215 | 1,179 | -0.5% | -6 |
| Flight Standards Work Force** | 4,947 | 4,982 | 4,825 | -0.7% | -35 |

* Includes all employees in pay status and Academy trainees
 Note FSS employment reduction due to A-76 effective 10/04/05

**In FY 07, AVS realigned 29 Aircraft Certification and 144 Flight Standards Information Technology Analysts into the Office of Quality, Integration and Executive Service

Data as of March 2009
 Source ATO-F, (202) 267-9123
 Source AQS-400, (202) 267-8990

Labor Relations

| | BARGAINING UNITS | LABOR AGREEMENTS | EMPLOYEES REPRESENTED |
|--------------------|---------------------|------------------------|--------------------------|
| Unions..... | 41 | 29 | 35,857 |
| AFGE | 9 | 6 | 1,762 |
| AFSCME (HQ) | 1 | 1 | 2 100 |
| LIUNA | 1 | 1 | 171 |
| NAGE | 3 | 3 | 326 |
| NATCA | 15 | 9 | 19,429 |
| NFFE | 3 | 2 | 593 |
| PAACE | 4 | 3 | 381 |
| PASS | 5 | 4 | 11 095 |
| Unrepresented | | | 995 |
| Nonbargaining | | | 10 543 |
| | | Total employees | 47,395 |

AFGE --American Federation of Government Employees
 AFSCME --American Federation of State, County, and Municipal Employees
 LIUNA --Laborer's International Union of North America
 NAGE --National Association of Government Employees
 NACTA --National Air Traffic Controllers Association
 NFFE --National Federation of Federal Employees
 PAACE --Professional Association of Aeronautical Center Employees
 PASS --Professional Aviation Safety Specialists

Source AHL-400
 (202) 267-3548

As of 06/01/09

FAA Finances
(In Millions of Dollars)

| | FY 2008 | FY 2009 | FY 2010 |
|---|---------------|----------------------|---------------|
| | Actual | Enacted ¹ | Request |
| Budget Authority (BA) | | | |
| Grants-In-Aid (Obligation Lim/Approp) | 3,515 | 4,920 | 3,515 |
| Research, Engineering, & Development | 147 | 171 | 180 |
| Facilities and Equipment | 2,514 | 2,942 | 2,925 |
| Operations | 8,740 | 9,042 | 9,336 |
| Total | 14,915 | 17,075 | 15,956 |
| Obligations Incurred--Operations | | | |
| Appropriation by Line of Business | | | |
| Air Traffic Organization (ATO) | 6,987 | 7,098 | 7,303 |
| Aviation Safety (AVS) | 1,087 | 1,165 | 1,216 |
| Commercial Space Transportation (AST) | 12 | 14 | 15 |
| Staff Offices (SO) | 677 | 765 | 802 |
| Total | 8,763 | 9,042 | 9,336 |
| Airport Grant Obligations (NET) | | | |
| Primary Airports & Cargo | 959 | 968 | 968 |
| States/Territories/Insular/Alaska Supp | 700 | 698 | 698 |
| Carryover Entitlements | 468 | 623 | 623 |
| Discretionary Fund | 786 | 593 | 592 |
| Small Airport Fund | 482 | 503 | 503 |
| Total | 3,395 | 3,385 | 3,384 |
| Total FAA Outlays | 14,719 | 15,851 | 16,339 |
| Trust Fund Receipts from Excise Taxes and Interest | | | |
| Transportation of Persons by Air | 8,440 | 7,693 | 7,917 |
| Transportation of Property | 521 | 500 | 513 |
| Use of International Air Facilities | 2,462 | 2,250 | 2,386 |
| Aviation Fuel Commercial Use | 616 | 414 | 416 |
| Aviation Fuel (Other Than Gas) | (30) | 384 | 424 |
| Aviation Gasoline | 39 | 41 | 41 |
| Total Tax Revenue | 12,048 | 11,282 | 11,697 |
| Revenue Refund | (56) | 0 | 0 |
| Net Tax | 11,992 | 11,282 | 11,697 |
| Interest revenue | 433 | 256 | 254 |
| Total Tax & Interest Revenue | 12,425 | 11,538 | 11,951 |

Numbers may not add due to rounding

¹ Includes funding provided by the American Recovery and Reinvestment Act of 2009. This act provides supplemental funding of \$200 million to Facilities and Equipment and \$1.1 billion for Grants in Aid to Airports.

As of 07/02/09

FAA NAS Operational Facilities (As of June 1)

| | 2008 | 2007 | 2006 |
|--|---------------|---------------|---------------|
| NAS Operational Facilities¹..... | 60,851 | 59,140 | 40,639 |
| Communications | 19 493 | 18 823 | 14 273 |
| Automation | 1 517 | 1,360 | 3,896 |
| Infrastructure | 19 356 | 17 848 | |
| Mission Support | 4 102 | 4,173 | |
| Navigation | 12 359 | 12 362 | 11 033 |
| Surveillance | 1 732 | 1 900 | 1 804 |
| Weather | 2,292 | 2,674 | 3,550 |
| Air Traffic Control Facilities² | | | |
| Air Route Traffic Control Center | 21 | 21 | 21 |
| Airport Traffic Control Tower | 512 | 512 | 517 |
| Flight Service ³ | 30 | 71 | 75 |
| Flight Service Stations | 27 | 47 | 16 |
| Automated Flight Service Stations | 3 | 24 | 60 |

¹ Includes All Responsibility Codes

² Included in NAS operational facilities

³ Flight Service include Flight Service Stations and Automated Flight Service Stations

As of 06/01/09

Source AOP-200
(202) 267-5288

FAA Officials

Washington Headquarters

| Routing Symbol | Officials |
|----------------|---|
| AOA* | Administrator J. Randolph Babbitt, 202-267-3111 Jana Murphy, Chief of Staff, 202-267-7416 Vacant, Senior Counsel to AOA, 202-267-7417 |
| ADA* | Deputy Administrator Lynne A. Osmus, Acting, 202-267-8111 David Weingart, Acting, Senior Advisor, 202-267-7417 |
| AJO | Chief Operating Officer, Air Traffic Organization Henry P. Krakowski, 202-493-5602 |
| AJF | Finance Business Unit Senior Vice President, Eugene D. Juba, 202-267-3022 |
| AJP | NextGen and Operations Planning Business Unit Senior Vice President, Victoria Cox, 202-267-7111 |
| AJG | Strategy and Performance Business Unit Senior Vice President, John Pipes, 202-267-5724 |
| AJN | Operations Business Unit Senior Vice President, Richard L. Day, 202-267-7224 |
| ABA | Assistant Administrator for Financial Services Ramesh K. Punwani, CFO, 202-267-9105 Deputy, Victoria Wassmer, 202-267-3882 |
| ABU | <i>Office of Budget</i> Director, Carol Rose, 202-267-8010 |
| AFC | <i>Office of Financial Controls</i> Director, Carl Burrus, 202-267-7140 |
| AFO* | <i>Office of Financial Operations</i> Director, Peter J. Basso, 202-267-8242 |
| AFR* | <i>Office of Financial Reporting & Accountability</i> Director, Allison Ritman, 202-267-3018 |
| ACR | Assistant Administrator for Civil Rights Fanny Rivera, 202-267-3254 Deputy, Barbara A. Edwards, 202-267-3264 |
| AEP | Asst. Admin. for Aviation Policy, Planning & Environment Nancy LoBue, Acting, 202-267-3927 |
| AEE | <i>Office of Environment and Energy</i> Director, Lourdes Maunce, Acting, 202-267-3576 |
| APO | <i>Office of Aviation Policy and Plans</i> Director, Nan Shellabarger, 202-267-3274 |

* Updated this issue
As of. 07/01/09

Source ABA-1
(202) 267-9105

FAA Officials

Washington Headquarters--(Cont)

| Routing Symbol | Officials |
|----------------|--|
| AGC* | Chief Counsel J. David Grizzle, Acting, 202-267-3222 Deputy Chief Counsel for Policy and Adjudication James W. Whitlow, 202-267-3773 Deputy Chief Counsel for Operations Marc L. Warren, 202-267-3773 |
| AGI | Asst. Administrator for Government & Industry Affairs Mary U. Walsh, Acting, 202-267-3277 Deputy, Vacant 202-267-8211 |
| AHR* | Asst. Administrator for Human Resource Management Ventris C. Gibson, 202-267-3456 Deputy, Darlene Freeman, Acting, 202-267-3850 |
| AHA | <i>Office of the Accountability Board</i> Executive Director, Maria Fernandez-Greczmiel, 202-267-3065 |
| AHD* | <i>Office of Corporate Learning</i> Executive Director, Paul Meyer, Acting, 202-267-3307 |
| AHF | <i>HR Field Operations</i> Executive Director, Karen Johnson, 847-294-7315 |
| AHL | <i>Office of Labor Management Relations</i> Executive Director, Melvin Harris, 202-267-3979 |
| AHP* | <i>Office of Human Resources Management Programs and Policies</i> Executive Director, Angela Porter, Acting, 202-267-3850 |
| AIO | Assistant Administrator for Information Services David M. Bowen, CIO, 202-493-4570 |
| AIS | <i>Office of Information Systems Security</i> Director, Michael F. Brown, 202-267-7104 |
| AOT* | <i>Office of Information Technology Optimization</i> Director, Vacant, Acting, 202-493-4570 |
| AES | <i>Office of Information Technology Enterprise</i> Director, Robert Rovinsky, 202-493-4019 |
| ARD | <i>Office of Information Technology Research and Development</i> Chief Technology Officer, Doug Roseboro, Acting, 202-385-8054 |
| AOC* | Assistant Administrator for Communications Laura Brown, Acting, 202-267-3883 Deputy, External Communications, Laura Brown, 202-267-3883 Deputy, Internal Communications, Gerald Lavey, 202-267-9499 |
| API | Asst. Administrator for International Aviation Di Reimold (A), 202-385-8900 Deputy, Di Reimold, 202-385-8900 |
| ARC | Assistant Administrator for Regions/Center Operations Paula Lewis, 202-267-7369 Deputy, Michael J. Cirillo, 202-267-7369 |
| ALO | <i>Aviation Logistics Organization</i> Director, Mame Mallory, 202-267-7369 |

FAA Officials

Washington Headquarters--(Cont.)

| Routing Symbol | Officials |
|---------------------|---|
| ASH | Claudio Manno, Acting, 202-267-7211 Deputy, Claudio Manno, 202-267-7211 |
| ADG | <i>Office of Hazardous Materials</i> Director, Christopher Bonanti, 202-267-9864 |
| AEO | <i>Office of Emergency Operations, Communications and Investigations</i> Director, Chrs Rocheleau, 202-267-8075 |
| AHS | <i>Office of Field Operations</i> Director, Thomas D Ryan, 202-267-7211 |
| AIN | <i>Office of Security</i> Director, Bruce Herron, 202-267-7714 |
| ARP | Associate Administrator for Airports Catherine M. Lang, Acting, 202-267-9471 Deputy, Randall S Fiertz, Acting, 202-267-8738 |
| AAS | <i>Office of Airport Safety and Standards</i> Director, Michael J O'Donnell, 202-267-3053 |
| ACO | <i>Office of Airport Compliance and Field Operations</i> Director, Randall S Fiertz, 202-267-3085 |
| APP | <i>Office of Airport Planning & Programming</i> Director, Benito DeLeon, 202-267-8775 |
| AST | Dr. George C. Nield, 202-267-7793 Deputy, James E VanLaak, 202-267-7848 |
| AVS | Associate Administrator for Aviation Safety Peggy Gilligan, 202-267-3131 Deputy, John J Hickey, 202-267-7804 |
| AAI* | <i>Office of Accident Investigation</i> Director, Hooper Harns, Acting, 202-267-7788 |
| AAM | <i>Office of Aviation Medicine</i> Director, Fredenck Tilton, MD, 202-267-3535 |
| AFS | <i>Flight Standards Service</i> Director, John Allen, 202-267-8237 |
| AIR | <i>Aircraft Certification Service</i> Director, Dorenda Baker, 202-267-8235 |
| AOV | <i>Office of Air Traffic Oversight</i> Director, Anthony Ferrante, 202-267-5202 |
| AQS | <i>Quality, Integration and Executive Service</i> Director, Tina Amereihn, 202-493-5717 |
| ARM | <i>Office of Rulemaking</i> Director, Pamela Hamilton-Powell, 202-267-9677 |
| ASA | <i>Office of Aviation Safety Analytical Services</i> Director, Jay J Pardee, 202-267-9179 |
| Duty Officer | (202) 267-3333 |

FAA Officials

Major Field Organizations

| Routing Symbol | Officials |
|-------------------|---|
| AAL | Alaskan Region, Regional Administrator Robert N. Lewis, 907-271-5645 222 West 7th Avenue, Box 14 Anchorage, Alaska 99513-7587 Duty Officer, 907-271-5936 |
| ACE* | Central Region, Regional Administrator Joseph N. Miniace, 816-329-3050 901 Locust Kansas City, Missouri 64106 Duty Officer, 816-329-3000 |
| ACT | William J. Hughes Technical Center, Director Wilson N. Felder, Ph.D., 609-485-6641 Atlantic City International Airport New Jersey 08405 Duty Officer, 609-485-6482 |
| AEA | Eastern Region, Regional Administrator Carmine Gallo, 718-553-3000 1 Aviation Plaza 159-30 Rockaway Blvd Jamaica, New York 11434-4809 Duty Officer, 718-553-3100 |
| AGL | Great Lakes Region, Regional Administrator Barry D. Cooper, 847-294-7294 2300 East Devon Avenue Des Plaines, Illinois 60018 Duty Officer, 847-294-8400 |
| AMC | Mike Monroney Aeronautical Center, Director Lindy Ritz, 405-954-4521 6500 South MacArthur Oklahoma City, Oklahoma 73125 Duty Officer, 405-954-3583 |

FAA Officials

Major Field Organizations--(Cont.)

| Routing Symbol | Officials |
|-----------------------|--|
| ANE | New England Region, Regional Administrator Amy Lind Corbett, 781-238-7020 12 New England Executive Park Burlington, Massachusetts 01803 Duty Officer, 781-238-7001 |
| ANM* | Northwest Mountain Region, Regional Administrator Kathryn Vernon, 425-227-2001 1601 Lind Avenue, S W Renton, Washington 98055-4056 Duty Officer, 425-227-2000 |
| ASO | Southern Region, Regional Administrator Doug Murphy, 404-305-5000 1701 Columbia Avenue College Park, Georgia 30337 Duty Officer, 404-305-5180 |
| ASW | Southwest Region, Regional Administrator Teresa Bruner, 817-222-5001 2601 Meacham Blvd Ft Worth, Texas 76137-4298 Duty Officer, 817-222-5006 |
| AWP | Western-Pacific Region, Regional Administrator William C. Withycombe, 310-725-3550 15000 Aviation Boulevard Hawthorne, California 90261 Duty Officer, 310-725-3300 |

FAA Officials

International Area Offices

| Routing Symbol | Officials |
|-------------------|---|
| AEU | Europe, Africa, & Middle East Area Office, Director Anthony Fazio, 011-322-508-2700 American Embassy, Brussels PSC 82 Box 002 APO AE 09724-1011 |
| AWH | Western Hemisphere Area Office, Director Phyllis Preston, Acting, 202-385-8869 8600 NW 36th Street Miami, FL 33166 |
| APC* | Asia-Pacific Area Office, Director Gene Kingsbury, Acting, 011-65-6543-1952 American Embassy 27 Napier Road Singapore 258508 |

**FEDERAL AVIATION ADMINISTRATION
FLIGHT PLAN 2009-2013**

INCREASED SAFETY

Goal: *Achieve the lowest possible accident rate and constantly improve safety.*

1. Reduce commercial air carrier fatalities.
2. Reduce general aviation fatalities.
3. Reduce the risk of runway incursions.
4. Ensure the safety of commercial space launches.
5. Enhance the safety of FAA's air traffic systems.
6. Implement a Safety Management System (SMS) for the FAA.

Performance Targets:

Obj. 1 Cut the rate of fatalities per 100 million persons on board in half by FY 2025.

Obj. 2 Reduce the fatal accident rate per 100,000 flight hours by 10 percent over a 10-year period (2009-2018).

Obj. 2 By the end of FY 2009, reduce accidents in Alaska for general aviation and all Part 135 operations from the 2000-2002 average of 130 accidents per year to no more than 99 accidents per year.

Obj. 3 By FY 2010, reduce Category A and B (most serious) runway incursions to a rate of no more than 0.450 per million operations, and maintain or improve through FY 2013.

Obj. 3 By the end of FY 2013, reduce total runway incursions by 10 percent from the FY 2008 baseline.

Obj. 4 No fatalities, serious injuries, or significant property damage to the uninvolved public during licensed or permitted space launch and reentry activities.

As of 12/31/08

Source: APO-120
(202) 267-3220

INCREASED SAFETY Performance Targets (Continued)

Obj. 5 Limit Category A and B (most serious) operational errors to a rate of no more than 1.95 per million activities by FY 2012 and maintain through FY 2013.

Obj. 6 In FY 2010, implement SMS in the Air Traffic Organization, Office of Aviation Safety, and Office of Airports. In FY 2012, implement SMS policy in all appropriate FAA organizations.

GREATER CAPACITY

Goal: Work with local governments and airspace users to provide increased capacity and better operational performance in the United States airspace system that reduces congestion and meets projected demand in an environmentally sound manner.

Objectives:

1. Increase capacity to meet projected demand and reduce congestion.
2. Increase reliability and on-time performance of scheduled carriers.
3. Address environmental issues associated with capacity enhancements.

Performance Targets:

Obj. 1 Achieve an average daily airport capacity for the 35 OEP airports of 103,068 arrivals and departures per day by FY 2011 and maintain through FY 2013.

Obj. 1 Achieve an average daily airport capacity for the 7 Metro areas of 39,484 arrivals and departures per day by FY 2009 and maintain through FY 2013.

Obj. 1 Commission nine new runway/taxiway projects, increasing the annual service volume of the 35 OEP airports by at least 1 percent annually, measured as a five-year moving average, through FY 2013.

Obj. 1 Sustain adjusted operational availability of 99.7 percent for the reportable facilities that support the 35 OEP airports through FY 2013.

Obj. 2 Achieve a NAS on-time arrival rate of 88 percent at the 35 OEP airports and maintain through FY 2013.

Obj. 3 Reduce the number of people exposed to significant noise by 4 percent per year through FY 2013, as measured by a three-year moving average.

Obj.3 Improve aviation fuel efficiency by another 1 percent over the FY 2008 level through FY 2009, and 1 percent each subsequent year through FY 2013 to 11 percent, as measured by a three-year moving average of the fuel burned per revenue mile flown.

INTERNATIONAL LEADERSHIP

Goal: *Increase the safety and capacity of the global civil aerospace system in an environmentally sound manner.*

Objectives:

1. Promote improved safety and regulatory oversight in cooperation with bilateral, regional, and multilateral aviation partners.
2. Promote seamless operations around the globe in cooperation with bilateral, regional, and multilateral aviation partners.

Performance Targets:

Obj. 1 Work with the Chinese aviation authorities and industry to adopt 27 proven Commercial Aviation Safety Team (CAST) safety enhancements by FY 2011. This supports China's efforts to reduce commercial fatal accidents to a rate of 0.030 fatal accidents per 100,000 departures by FY 2012.

Obj. 1 By FY 2013, arrange commitments for external funding for at least 35 aviation development projects (7 per year).

Obj. 1 By FY 2013, work with at least 18 countries or regional organizations to develop aviation leaders to strengthen the global aviation infrastructure.

Obj. 2 By FY 2013, expand the use of NextGen performance-based systems and concepts to five priority countries.

ORGANIZATIONAL EXCELLENCE

GOAL: Ensure the success of the FAA's mission through stronger leadership, a better-trained and safer workforce, enhanced cost-control measures, and improved decision-making based on reliable data.

Objectives:

1. Implement human resource management practices to attract and retain a highly skilled, diverse workforce and provide employees a safe, positive work environment.
2. Make the organization more effective with stronger leadership, a results-oriented, high performance workforce, and a culture of accountability.
3. Improve financial management while delivering quality customer service.
4. Make decisions based on reliable data to improve our overall performance and customer satisfaction.
5. Enhance our ability to respond to crises rapidly and effectively, including security-related threats and natural disasters.

Performance Targets:

Obj. 1 By FY 2010, 80 percent of FAA external hires will be filled within OPM's 45-day standard for government-wide hiring.

Obj. 1 Reduce the total workplace injury and illness case rate to no more than 2.44 per 100 employees by the end of FY 2011, and maintain through FY 2013.

Obj. 1 Reduce grievance processing time by 30 percent (to an average of 102 days) by FY 2010 over the FY 2006 baseline of 146 days, and maintain the reduction through FY 2013.

Obj. 1 Maintain the air traffic control workforce at, or up to 2 percent above, the projected annual totals in the Air Traffic Controller Workforce Plan.

Obj. 1 Maintain the aviation safety workforce within 1 percent of the projected annual totals in the Aviation Safety Workforce Plan.

ORGANIZATIONAL EXCELLENCE Performance Targets (Continued)

Obj. 3 Organizations throughout the agency will continue to implement cost efficiency initiatives such as: 10-15 percent savings for strategic sourcing for selected products and services; by the end of FY 2009, reduce leased space for Automated Flight Service Stations from approximately 510,000 square feet to approximately 150,000 square feet; annual reduction of \$15 million in Information Technology operating costs; and by FY 2010, reduce overhead costs 5-10 percent through automation of invoice processing.

Obj. 3 Obtain an unqualified opinion on the agency's financial statements (Clean Audit with no material weaknesses) each fiscal year.

Obj. 4 In FY 2009, 90 percent of Major System Investments are within 10 percent variance of current baseline total budget estimate at completion (BAC).

Obj. 4 In FY 2009, 90 percent of Major System Investments selected annual milestones are achieved.

Obj. 4 Maintain the annual average of FAA surveys on the American Customer Satisfaction Index at or above the average Federal Regulatory Agency score.

Obj. 4 Achieve zero cyber security events that disable or significantly degrade FAA services.

Obj. 5 Exceed Federal Emergency Management Agency continuity readiness levels by 5 percent.