



U.S. Department
of Transportation

**Federal Aviation
Administration**

ADMINISTRATOR'S FACT BOOK

July 2001

Produced by: APF-100
Updated Quarterly

Web site: <http://www.atctraining.faa.gov/factbook>



FAA VISION

To provide the safest, most efficient and responsive aerospace system in the world, and to be the best Federal employer, continuously improving service to customers and employees.

FAA Mission

FAA provides a safe, secure, and efficient global aerospace system that contributes to national security and the promotion of US aerospace safety.

As the leading authority in the international aerospace community, FAA is responsive to the dynamic nature of customer needs, economic conditions, and environmental concerns.

FAA VALUES

We Believe in

- ☆ *Trust*
- ☆ *Integrity*
- ☆ *Honesty*
- ☆ *Involvement*
- ☆ *Teamwork*
- ☆ *Diversity*
- ☆ *Respect*

We Are Committed To

- ☆ *Responsiveness*
- ☆ *Quality*
- ☆ *Timeliness*
- ☆ *Fiscal Responsibility*
- ☆ *Accountability*
- ☆ *Communication*

We Will Achieve These Values By

- ☆ *Giving people what they need, then letting them do their jobs.*
- ☆ *Making timely decisions at the lowest level and respecting them.*
- ☆ *Committing our best to our customers.*
- ☆ *Valuing our people.*
- ☆ *Being open to new ideas.*
- ☆ *Speaking out for what we believe, even when it is unpopular.*
- ☆ *Recognizing each person's contributions and realizing each person's full potential.*
- ☆ *Collaborating across organizations.*
- ☆ *Taking pride in what we do.*

Table of Contents

FAA Vision and Mission Inside Front Cover
FAA Values Inside Back Cover

Safety

Aviation Accidents by Type of Operations	3*
Aviation Accident Rates by Type of Operation	4*
Airspace Incidents by Incident Type	5*
Airspace Incident Rates by Incident Type	6*
NTSB U.S. Transportation Fatalities.....	7

FAA Air Traffic

FAA Air Traffic Activity	8*
Air Route Traffic Control Center Activity	9*
50 Busiest FAA Air Traffic Control Towers	10*
50 Busiest Approach Control Facilities	12*
Automated Flight Service Station Activity	14*

Airports

Number of U.S. Airports	16
National Airspace Systems Delays	17*

Aircraft

U.S. Air Carrier Activity.....	18
U.S. General Aviation Activity	19
Aircraft Certification Service	20

Airmen

Active Pilots and Nonpilots.....	21
----------------------------------	----

Industry Trends

Scheduled U.S. Air Carrier Traffic & Fin. Trends.....	22
U.S. Commercial Space Trans. Financial Trends	23*
Aviation Forecasts	24

<i>FAA Regional Boundaries Map.....</i>	<i>25</i>
---	-----------

FAA Organizational Chart	Center Fold
--------------------------------	-------------

Table of Contents (cont.)

Commercial Space Transportation

Associate Administrator for Commercial Space Transportation (AST).....	28
AST Licensing and Industry Activity.....	29
U.S. Commercial Space Launch Schedule	30

FAA Resources

FAA Employment	31*
FAA Percent Minority and Women Employment	32*
FAA Major Work Force Employment	33*
Labor Relations	34
FAA Finances	35
FAA Facilities and Aircraft	36

Organization

FAA Officials–Washington Headquarters	37*
FAA Officials–Major Field Organizations	40*
FAA Officials--International Offices	42*
FAA Goals and Objectives	43

For further information call APF-100 (202-267-9946)

*Updated this issue

Distribution: A-WXYZE-3; A-FOF-O(STD)

Aviation Accidents by Type of Operation

Type of Operation	Year	Jan	Feb	Mar	Apr	May	Jun	Jul	Aug	Sep	Oct	Nov	Dec	Year Total
Large Air Carrier	2000	2	7	7	5	4	2	3	5	6	4	6	5	56
	2001	1	4	3	4	3	1							16
Commuter	2000	0	3	3	0	1	1	0	1	2	1	0	0	12
	2001	1	0	0	1	1	0							3
Air Taxi	2000	5	5	6	6	7	4	9	9	11	6	7	5	80
	2001	7	6	6	6	7	4							36
General Aviation	2000	90	106	129	158	171	191	246	218	179	150	101	96	1,835
	2001	103	109	121	146	151	174							804
Rotorcraft*	2000	14	12	20	21	25	20	23	17	17	16	6	17	208
	2001	11	16	19	9	15	17							87

* Part 135 and US registered general aviation rotocraft accidents.

Note: Preliminary data and subject to change.

As of: 7/16/2001

Source: AAI-200

(202) 267-3279

Aviation Accident Rates by Type of Operation

Type of Operation	1996		1997		1998		1999		% Chg 99-98	
	Number	Rate	Number	Rate	Number	Rate	Number	Rate	Number	Rate
Large Air Carriers.....	38	.28	48	.31	50	.29	52	.29	4%	0%
Commuter.....	11	.40	16	1.6	8	2.3	13	4.8	63%	109%
Air Taxi.....	90	4.44	83	3.64	78	3.03	77	2.71	-1%	-11%
General Aviation.....	1,907	7.67	1,855	7.28	1,908	7.12	1,908	7.05	0%	-1%

Accident Rates are per 100,000 Flight Hours

Rotocraft rates discontinued, currently under review.

Note: Preliminary data and subject to change.

As of: 1/24/01

Source: AAI-200

(202) 267-3279

Airspace Incidents by Incident Type

Incident Type	Year	Jan	Feb	Mar	Apr	May	Jun	Jul	Aug	Sep	Oct	Nov	Dec	Year Total
Near Midair Collisions	2000	14	16	26	17	24	20	26	26	20	22	12	17	240
	2001	11	16	18	14	29	25							113
Pilot Deviations	2000	125	154	182	178	201	176	170	184	146	153	135	109	1,913
	2001	117	113	156	146	188	155							875
Operational Errors	2000	65	85	101	94	114	115	103	88	100	97	99	77	1,138
	2001	69	83	111	101	113	112							589
Vehicle Pedestrian Deviations	2000	43	42	37	51	46	62	48	43	58	43	42	32	547
	2001	37	38	30	51	38	36							230
Surface Incidents	2000	89	104	115	120	138	149	127	127	121	118	100	87	1,395
	2001	95	101	107	113	122	125							663
Runway Incursions*	2000	24	24	36	33	39	44	41	47	33	41	32	32	426
	2001	25	33	39	33	36	41							207

Note: Preliminary data and subject to change.

N/A: Not available at time of update.

As of: 7/7/01

*As of: 7/20/01

Source: ATX-400

(202) 267-9630

*ATS-20

(202) 493-4307

Airspace Incident Rates by Incident Type

Incident Type									Percent Change	
	1997		1998		1999		2000		1998 - 1999 (4)	
	Number	Rate	Number	Rate	Number	Rate	Number	Rate	Number	Rate
Operational Errors (1).....	790	.51	894	.56	992	.61	1,138	.70	15%	15%
Pilot Deviations (2).....	1,494	.97	1,594	1.00	1,630	.99	1,913	1.19	17%	20%
Surface Incidents (3).....	813	1.26	832	1.26	1,049	1.52	1,395	.86	33%	-43%

(1) Per 100,000 Facility Activities

(2) Per 100,000 Flight Hours

(3) Per 1,000,000 Airport Operations

(4) Calculations use fifteen decimal places for rates (rounded two places for display).

Note: Preliminary data subject to change.

As of: 7/7/01

Source: ATX-400

(202) 267-9630

National Transportation Safety Board

1998-1999 U.S. Transportation Fatalities

	1998	1999 ¹
Highway		
Passenger cars.....	21,141	20,771
Light Trucks and Vans.....	10,665	11,208
Pedestrians.....	5,228	4,906
Motorcycles.....	2,292	2,471
Pedalcycles.....	757	746
Medium and heavy trucks.....	739	755
Buses.....	38	58
All Other.....	641	696
Total.....	41,501	41,611
Grade Crossings ²	(431)	(432)
Rail		
Intercity		
Trespassers and Nontrespassers..... ³	601	530
Employees and Contractors.....	34	43
Passengers on trains.....	4	14
Light and commuter rail..... ⁴⁻⁵	192	218
Total.....	831	805
Marine		
Recreational Boating.....	815	729
Cargo Transport.....	52	42
Commercial fishing..... ⁶	66	46
Commercial Passengers.....	17	36
Total.....	950	853
Aviation		
General Aviation.....	623	628
Airlines.....	1	12
Air Taxi.....	48	38
Commuter.....	0	12
Foreign/Unregistered..... ⁷	16	1
Total.....	688	691
Pipeline		
Gas.....	17	22
Liquids.....	1	4
Total.....	18	26
GRAND TOTAL.....	43,988	43,986

¹ 1999 figures are preliminary estimates supplied by modal agencies within DOT.

² Grade crossing fatalities are not counted as a separate category for determining the grand totals because they are included in the highway and rail categories, as appropriate.

³ Does not include motor vehicle occupants killed at grade crossings.

⁴ 1998 figure includes heavy rail fatalities (54) reported by the Federal Transit Administration (FTA).

⁵ Fatalities reported to the FTA for commuter rail operations may also be reported to the Federal Rail Administration and included in the intercity railroad fatalities.

⁶ Refers to only operational fatalities.

⁷ Includes non-U.S. registered aircraft involved in accidents in the U.S.

Air Traffic

FAA Air Traffic Activity (In Thousands)

Aircraft Handled by FAA ARTCC's	Jan-May 2001*	Jan-May 2,000	Jan-Dec 2000
Air Carrier.....	10,428	10,306	25,080
Air Taxi.....	3,439	3,342	8,164
General Aviation.....	3,340	3,640	8,634
Military.....	1,711	1,753	4,178
TOTAL....	18,918	19,041	46,056
Airport Operations Logged by FAA Towers			
Air Carrier.....	6,056	6,139	14,892
Air Taxi.....	3,767	3,729	9,230
General Aviation.....	9,651	10,745	25,982
Military.....	830	828	2,012
TOTAL....	20,304	21,441	52,116
Instrument Operations Logged by FAA Towers			
Air Carrier.....	6,445	6,762	16,288
Air Taxi.....	4,585	4,572	11,239
General Aviation.....	7,600	8,280	20,391
Military.....	1,441	1,432	3,423
TOTAL....	20,071	21,046	51,341
Flight Services Logged by:			
Flight Service Stations.....	184	274	826
Automated Flight Service Stations.....	8,438	12,849	30,856
TOTAL....	8,622	13,123	31,682

*Preliminary
As of: 5/31/01

Source: APO-130
(202) 267-3350

Air Route Traffic Control Center Activity

CY 99 Rank	Center	Aircraft Handled (000's)		
		Jan-May 2001*	Jan-May 2000	Jan-Dec 2000*
1	Cleveland, OH.....	1,286	1,296	3,206
2	Atlanta, GA.....	1,242	1,233	2,956
3	New York, NY.....	1,209	1,195	2,921
4	Chicago, IL.....	1,171	1,183	2,920
5	Washington, DC.....	1,170	1,139	2,772
6	Indianapolis, IN.....	1,073	1,094	2,685
7	Jacksonville, FL.....	990	1,008	2,295
8	Memphis, TN.....	910	913	2,232
9	Fort Worth, TX.....	911	922	2,228
10	Kansas City, KS.....	892	900	2,200
11	Miami, FL.....	1,005	974	2,193
12	Los Angeles, CA.....	911	908	2,165
13	Minneapolis, MN.....	846	852	2,143
14	Houston, TX.....	885	880	2,095
15	Albuquerque, NM.....	766	923	2,052
16	Boston, MA.....	766	748	1,906
17	Denver, CO.....	707	705	1,730
18	Oakland, CA.....	695	693	1,684
19	Salt Lake City, UT.....	630	628	1,545
20	Seattle, WA.....	576	590	1,451
21	Anchorage, AK.....	226	210	567
22	Guam **	53	46	112

*Preliminary

**Center Radar Approach Control (CERAP)

Source: APO-130
(202) 267-3350

As of: 5/31/01

50 Busiest FAA Airport Traffic Control Towers

CY 2000 Rank	Tower and State	Airport Operations (000's)		
		Jan-May 2001*	Jan-May 2000	Jan-Dec 2000
1	Atlanta International, GA.....	378	384	913
2	Chicago/O'Hare Int'l., IL.....	387	370	909
3	Dallas/Ft. Worth Int'l., TX.....	354	358	866
4	Los Angeles Int'l, CA.....	328	317	784
5	Phoenix Sky Harbor Int'l, AZ.....	269	268	639
6	Detroit Metro Wayne Co., MI.....	228	231	555
7	Denver International, CO.....	217	214	529
8	Minneapolis-St. Paul Int'l, MN.....	212	212	522
9	Las Vegas/McCarran Int'l, NV.....	217	233	521
10	Miami International, FL.....	214	223	517
11	Boston/Logan Int'l, MA.....	204	201	508
12	Houston/G Bush Intercont'l, TX.....	206	200	491
13	Lambert-St. Louis Int'l, MO.....	205	201	484
14	Philadelphia Int'l, PA.....	198	198	484
15	Van Nuys, CA.....	143	211	483
16	Washington Dulles Int'l, VA.....	177	205	480
17	Covington/Cincinnati Int'l, KY.....	156	199	478
18	Charlotte/Douglas Int'l, NC.....	198	188	460
19	Newark International, NJ.....	194	188	457
20	Metropolitan Oakland Int'l.....	165	191	449
21	Pittsburgh International, PA.....	189	184	448
22	Seattle Tacoma Int'l, WA.....	173	178	446
23	San Francisco Int'l, CA.....	168	178	431
24	Denver/Centennial.....	141	170	398
25	La Guardia, NY.....	170	154	392

*Preliminary ¹ Missing 2001 data

As of: 5/31/01

50 Busiest FAA Airport Traffic Control Towers

CY 2000 Rank	Tower and State	Airport Operations (000's)		
		Jan-May 2001*	Jan-May 2000	Jan-Dec 2000
26	Santa Ana/John Wayne, CA.....	160	164	388
27	Memphis International, TN.....	164	151	386
28	Long Beach/Daugherty, CA.....	151	164	379
29	Daytona Beach Int'l, FL.....	130	166	372
30	Orlando/Sanford, FL.....	181	156	372
31	Phoenix-Deer Valley, AZ.....	142	156	371
32	Salt Lake City Int'l, UT.....	149	149	367
33	Orlando International, FL.....	146	156	366
34	Seattle/Boeing Field, WA.....	128	141	366
35	John F. Kennedy Int'l, NY.....	138	143	359
36	Honolulu International, HI.....	141	142	345
37	Washington National, DC.....	144	141	343
38	Pontiac/Oakland Co. Int'l, MI.....	1	131	334
39	Cleveland Hopkins Int'l, OH.....	129	138	332
40	Prescott/E. A. Love Field, AZ.....	141	151	320
41	Anchorage International, AK.....	105	111	318
42	Portland International, OR.....	126	130	317
43	Baltimore/Wash. Int'l, MD.....	137	123	315
44	Fort Worth Meacham, TX.....	102	131	301
45	San Jose International, CA.....	118	122	300
46	Chicago Midway, IL.....	117	123	298
47	Raleigh/Durham Int'l, NC.....	125	120	296
48	Fort Lauderdale/Hollywood, FL.....	137	127	292
49	Teterboro, NJ.....	113	104	283
50	Tampa International, FL.....	119	121	279

50 Busiest Radar Approach Control Facilities

CY 2000 Rank	Facilities/State	Instrument Ops (000s)		
		Jan-May 2001*	Jan-May 2000	Jan-Dec 2000
1	Southern Calif. TRACON, CA.....	969	996	2,451
2	New York TRACON, NY.....	831	821	2,086
3	Chicago TRACON, IL.....	570	566	1,399
4	Dallas/Ft Worth, TRACON, TX.....	563	575	1,394
5	Atlanta International, GA ¹	276	483	1,147
6	Bay TRACON, CA.....	437	430	1,073
7	Miami International, FL.....	430	436	996
8	Houston TRACON, TX.....	355	356	856
9	Phoenix TRACON, AZ.....	325	328	763
10	Washington Dulles Int'l, VA.....	290	309	746
11	Denver TRACON, CO.....	293	291	718
12	Detroit TRACON, MI.....	293	313	713
13	Minneapolis TRACON, MN.....	276	283	699
14	Philadelphia International, PA.....	274	278	686
15	Las Vegas TRACON, NV.....	271	300	678
16	Orlando International, FL.....	278	284	655
17	San Juan CERAP, PR.....	297	271	638
18	Boston TRACON, MA.....	252	247	637
19	Washington National, DC.....	272	258	630
20	St Louis TRACON, MO.....	264	259	628
21	Daytona Beach Int'l, FL ¹	170	279	619
22	Seattle/Tacoma TRACON, WA.....	249	241	613
23	Covington/Cincinnati Int'l, KY.....	206	251	610
24	Tampa International, FL.....	263	266	594
25	Charlotte/Douglas Int'l, NC.....	251	237	583

* Preliminary ¹Missing 2001 data

Source: APO-130
(202) 267-3350

As of: 5/31/01

50 Busiest Radar Approach Control Facilities

CY 2000 Rank	Facilities/State	Instrument Ops (000's)		
		Jan-May 2001*	Jan-May 2000	Jan-Dec 2000
26	Salt Lake City TRACON, UT.....	236	229	572
27	Pittsburgh International, PA.....	224	224	551
28	Baltimore-Washington Int'l, MD.....	225	211	540
29	Honolulu CERAP, HI ¹	160	212	512
30	Jacksonville Int'l, FL.....	224	209	502
31	Sacramento TRACON, CA.....	187	174	461
32	San Antonio Int'l, TX.....	180	183	440
33	Memphis International, TN.....	199	189	439
34	Cleveland Hopkins Int'l, OH.....	164	173	426
35	Port Columbus Int'l, OH ¹	157	156	393
36	Yankee TRACON, CT.....	148	149	385
37	Palm Beach International, FL.....	195	177	384
38	Corpus Christi, TX.....	154	159	382
39	Portland TRACON, OR.....	151	152	381
40	Pensacola TRACON, FL.....	169	145	377
41	Dayton International, OH.....	146	148	376
42	Raleigh-Durham Int'l, NC.....	158	151	375
43	Honolulu International, HI.....	148	150	363
44	Austin, TX.....	138	139	344
45	Anchorage TRACON, AK.....	120	127	342
46	Milwaukee/Gen Mitchell Intl, WI.....	134	138	336
47	Indianapolis Int'l, IN ¹	61	143	333
48	Kansas City International, MO.....	126	130	330
49	Nashville International, TN.....	103	112	314
50	Providence, RI.....	128	132	312

Automated Flight Service Stations Activity

CY 2000 Rank	AFSS/State	Flight Services (000's)		
		Jan-May 2001*	Jan-May 2000	Jan-Dec 2000
1	Miami AIFSS, FL ¹	353	489	1,096
2	St. Petersburg, FL ¹	340	530	1,081
3	Lansing, MI ¹	219	320	858
4	Fort Worth, TX ¹	330	354	813
5	Seattle, WA ¹	156	275	741
6	Prescott, AZ ¹	249	299	727
7	Bridgeport, CT ¹	37	253	702
8	Kankakee, IL ¹	40	259	669
9	Raleigh, NC ¹	201	264	669
10	Macon, GA ¹	215	270	655
11	Columbia, MO ¹	117	296	651
12	Princeton, MN ¹	1	255	641
13	Leesburg, VA.....	249	251	640
14	Denver, CO ¹	155	271	640
15	Green Bay, WI ¹	1	227	617
16	San Angelo, TX.....	267	271	613
17	Williamsport, PA.....	205	219	587
18	Millville, NJ.....	196	215	570
19	Anderson, SC ¹	178	252	560
20	Terre Haute, IN ¹	34	218	559
21	Kenai AIFSS, AK ¹	96	170	541
22	Oakland AIFSS, CA ¹	159	221	536
23	Anniston, AL ¹	168	226	526
24	Conroe, TX.....	219	229	516
25	Altoona, PA.....	163	187	498
26	Mc Alester, OK.....	197	206	472
27	Albuquerque, NM.....	185	194	468
28	Hawthorne, CA ¹	113	188	440
29	Reno, NV.....	98	147	432
30	Cleveland, OH.....	1	168	431

* Preliminary ¹ Missing 2001 data

Source: APO-130
(202) 267-3350

Automated International Flight Service Station--AIFSS

As of: 5/31/01

Automated Flight Service Stations Activity

CY 2000 Rank	AFSS/State	Flight Services (000's)		
		Jan-May 2001*	Jan-May 2000	Jan-Dec 2000
31	Riverside, CA ¹	143	195	429
32	Jonesboro, AR.....	162	179	416
33	Wichita, KS ¹	123	175	416
34	Gainesville, FL ¹	153	226	399
35	Nashville, TN ¹	112	163	394
36	Dayton, OH.....	173	153	393
37	St. Louis, MO ¹	101	140	392
38	Mc Minnville, OR ¹	84	141	374
39	Rancho Murieta, CA ¹	123	163	373
40	Burlington, VT ¹	19	149	370
41	Cedar City, UT.....	105	148	361
42	De Ridder, LA.....	144	154	350
43	Fort Dodge, IA ¹	69	137	346
44	Columbus, NE ¹	38	145	329
45	San Diego, CA ¹	55	159	326
46	Bangor, ME ¹	18	119	323
47	Islip AIFSS, NY.....	104	118	321
48	Grand Forks, ND.....	152	133	317
49	Buffalo, NY.....	102	111	309
50	Louisville, KY ¹	90	134	302
51	San Juan AIFSS, PR ¹	122	146	302
52	Elkins, WV.....	96	101	267
53	Great Falls, MT ¹	54	96	245
54	Greenwood, MS ¹	35	115	244
55	Jackson, TN ¹	71	103	242
56	Huron, SD.....	1	95	235
57	Honolulu, HI ¹	81	92	223
58	Fairbanks, AK ¹	46	74	223
59	Boise, ID ¹	43	71	194
60	Casper, WY ¹	61	64	188
61	Juneau, AK ¹	24	48	154

Airports

Number of U.S. Airports ¹ (As of December 31)

	2000	1999	1998
Total Airports	19,281	19,098	18,770
Public Use Airports.....	5,317	5,324	5,352
# with Paved Runways.....	3,953	3,949	3,970
# with Unpaved Runways.....	1,364	1,375	1,382
# with Lighted Runways.....	4,035	4,051	4,005
# with Unlighted Runways.....	1,282	1,273	1,347
Private Use Airports.....	13,964	13,774	13,418
# with Paved Runways.....	4,463	4,384	4,451
# with Unpaved Runways.....	9,501	9,390	8,967
# with Lighted Runways.....	1,010	918	840
# with Unlighted Runways.....	12,954	12,856	12,578
Public use airports abandoned	13	17	24
Private use airports abandoned	156	109	92
Certificated Airports*	651	655	660
Civil	563	565	566
Military	88	90	94

¹ Includes civil and joint-use civil-military airports, heliports, STOLports, and seaplane bases in the U.S. and its territories.

² Preliminary

* Certificated airports serve Air Carrier Operations with aircraft seating more than 30 passengers. (FAR Part 139).

Source: AAS-330

(202) 267-8752

As of: 12/31/00

National Airspace Total System Delays

Year	Jan	Feb	Mar	Apr	May	Jun	Jul	Aug	Sep	Oct	Nov	Dec	YTD Total
2001	27,894	31,599	29,855	30,260	36,460	41,607							197,675
2000	26,015	27,208	32,205	35,332	36,570	50,114	44,430	47,893	43,357	43,794	34,365	29,006	450,289
1999	24,345	19,851	23,180	34,046	39,533	41,602	45,162	37,189	32,833	28,223	23,330	24,822	374,116 r/
1998	27,623	24,855	24,159	22,563	29,187	37,093	25,672	30,549	20,194	23,988	20,439	19,912	306,234 r/
1997	21,588	15,856	15,055	17,453	19,177	25,068	26,193	24,816	19,388	17,812	22,337	20,516	245,259 r/

17 Delays of 15 minutes or longer
r/ Revised

As of: 6/30/01

Source: ATT-220
(703) 904-4470

Aircraft

U.S. Air Carrier Activity

	CY 1999	CY 1998	CY 1997
Total Number of Aircraft¹.....	19,145	18,754	17,990
Type of Carrier			
Domestic, flag, supplemental, scheduled, cargo air carriers, and commercial operators.....	7,094	6,959	6,681
Commuter Air Carriers and Air Taxis.....	12,051	11,795	11,309
Total Number of Aircraft¹.....	19,145	18,754	17,990
Type of Aircraft			
Jet.....	7,270	6,865	6,464
Turboprop.....	3,740	3,535	3,207
Piston.....	5,757	6,065	6,167
Rotary Wing.....	2,378	2,289	2,152
Air Carrier Traffic Statistics² (Millions)*			
Passenger miles flown.....	668,169	635,517	605,434
Passenger enplanements.....	635	613	599
Ton miles.....	86,800	82,304	81,057
Aircraft miles flown.....	6,161	5,838	5,679
Passenger load factor ³			
Domestic.....	68.9%	70.0%	69.1%
International.....	74.4%	72.8%	74.1%

¹ Source: Vital Information System

² Includes domestic and international scheduled service, of Certificated Route Air Carriers only.

³ Proportion of aircraft seating capacity that is sold.

As of: 12/31/99

Source: AFS-40
(202) 267-3433
*BTS (K-25)
(202) 366-8513

U.S. General Aviation and Air Taxi Activity

(Calendar Years)

	Estimated Active Aircraft (thousands)		Estimated Hours Flown (Millions)	
	1999	1998	1999	1998
Total	219.4	204.7	31.8	28.1
By Type Aircraft				
Piston.....	171.9	163.0	22.9	20.4
Turboprop.....	5.7	6.2	1.8	1.8
Jet.....	7.1	6.1	2.7	2.2
Rotary Wing.....	7.4	7.4	2.7	2.3
Other.....	6.8	5.6	0.3	0.3
Experimental.....	20.5	16.5	1.2	1.1
By Type Flying				
Public Use.....	4.1	4.0	1.1	1.4
Corporate.....	10.8	11.3	3.6	3.2
Business.....	24.5	32.6	3.6	3.5
Personal.....	147.1	124.3	11.3	9.8
Instructional.....	16.1	11.4	5.9	4.0
Aerial Application.....	4.6	4.6	1.5	1.3
Aerial Observation.....	3.2	3.2	1.2	0.8
External Load.....	0.2	0.3	0.1	0.2
Other Work Use.....	2.4	1.1	0.8	0.3
Sight Seeing.....	0.8	0.7	0.2	0.2
Air Tours.....	0.3	0.3	0.1	0.2
Air Taxi.....	4.3	4.9	1.9	2.4
Other.....	N/A	6.0	N/A	0.9
Air Medical Services...	0.8	N/A	0.5	N/A

As of: 12/31/99

Source: APO-110
(202) 493-4236

Aircraft Certification Service

Aircraft Certification Mission and Program Profiles

	FY 2000	FY 1999
Type Certificates/Supplemental Type Certificates Issued.....	1,680	1,790
Other Design Approvals Issued.....	5,975	5,960
Production Approvals (Including Amendments) Issued.....	2,770	2,720
Airworthiness Certificates Issued.....	2,850	2,820
New Airworthiness Directives (AD) Issued.....	510	474
New Designees (Representative of the Administrator) Appointed.....	959	1,195
Total Active Designees.....	4,384	4,594

As of: 9/30/00

Source: AIR-503
(202) 267-7260

Active Pilots and Nonpilots (As of 31 December)

	2000		1999	
	Total	Women	Total	Women
Pilot-Total	625,581	36,757	635,472	35,762
Student.....	93,064	10,809	97,359	11,191
Private.....	251,561	14,554	258,749	15,171
Commercial.....	121,858	5,807	124,261	5,720
Airline Transport.....	141,596	4,411	137,642	4,126
Other ¹	17,502	1,176	17,461	1,165
Nonpilot-Total²	547,453	16,552	549,588	15,380
Mechanic.....	344,434	5,047	340,402	4,722
Repairmen.....	38,208	1,704	35,989	1,582
Ground Instructor.....	72,326	5,154	10,447	5,016
Flight Engineer.....	65,098	2,076	63,591	1,841
Other ³	27,387	2,571	25,975	2,389
Flight Instructor	80,931	5,193	79,171	5,028

¹ Includes helicopter (only) & glider (only), and recreational pilot certificates.

² Excludes non-pilots 70 years old or over in all certificate types except flight engineers and flight navigators.

³ Includes flight navigators, parachute riggers, and dispatchers.

As of 12/31/00

Source: APO-110
(202) 267-3352

Industry Trends

Scheduled U.S. Air Carrier Traffic and Financial Trends

	1st Half FY 2001	1st Half FY 2000	Numerical Change	Percent Change
TRAFFIC				
ASM'S (in millions)				
Majors.....	442,491	433,039	9,452	2.2
Nationals.....	32,916	27,697	5,219	18.8
Regionals.....	396	448	(52)	(11.6)
Totals.....	475,803	461,184	14,619	3.2
RPM's (in millions)				
Majors.....	306,547	298,388	8,159	2.7
Nationals.....	21,654	17,585	4,069	23.1
Regionals.....	193	214	(21)	(9.8)
Totals.....	328,394	316,187	12,207	3.9
Load Factor (in percent)				
Majors.....	69.3	68.9	0.4	
Nationals.....	65.8	63.5	2.3	
Regionals.....	48.8	47.8	1.0	
Totals.....	69.0	68.6	0.4	
FINANCIAL				
Revenues (in millions)				
Majors.....	\$57,226	\$54,317	\$2,909	5.4
Nationals.....	5,913	5,615	298	5.3
Regionals.....	433	356	77	21.6
Totals.....	\$63,572	\$60,288	3,284	5.4
Expenses (in millions)				
Majors.....	\$57,594	\$52,360	\$5,234	10.0
Nationals.....	5,876	5,428	448	8.3
Regionals.....	428	357	71	19.9
Totals.....	\$63,898	\$58,145	5,753	9.9
Operating Profit/Loss (in millions)				
Majors.....	(\$368)	\$1,958	(\$2,326)	
Nationals.....	37	187	(150)	
Regionals.....	5	(1)	6	
Totals.....	(\$325)	\$2,143	(\$2,468)	

Source: APO-110
(202) 493-4236

As of: 7/16/01

U.S. Commercial Space Transportation Financial Trends

	CY 99	CY 00	CY 01 (Projected)
Commercial Launch Revenues (in Millions)	\$851	\$625	\$600

As of: 1/19/01

Source: AST-200
(202) 267-8308

Aviation Forecasts

	Actual FY 2000	Forecast FY 2004
FAA FACILITY WORKLOAD	46.0	50.4
Aircraft Handled by FAA ARTCC's (Millions)		
Air Carrier.....	25.0	28.0
Air Taxi/Commuter.....	8.1	8.7
General Aviation.....	8.7	9.5
Military.....	4.2	4.2
Operations Logged by FAA Towers (Millions)		
Airport.....	68.7	77.5
Instrument.....	53.0	57.7
Flight Services Logged by Flight Services Stations (Millions)		
	30.5	30.1
CIVIL AVIATION ACTIVITY		
Certificated Route Air Carrier		
Revenue Passenger Enplanements (Millions)*.....	658.7	754.9
Revenue Passenger Miles (Billions)*.....	684.0	817.9
Air Carrier Aircraft.....	6,037	7,131
General Aviation Estimated		
Hours Flown (Millions)**.....	32.1	35.4
Active Aircraft (Thousands)**.....	221.2	230.2
ESTIMATED FUEL CONSUMED BY U.S. DOMESTIC CIVIL AVIATION (Millions of Gallons)		
Jet Fuel		
Air Carrier.....	20,175	24,092
General Aviation.....	1,035	1,383
Aviation Gas		
Air Carrier.....	2.0	2.0
General Aviation.....	347.1	367.0
Active Pilots (Thousands)**	648.5	714.6

* Reflects update to forecasts published in FAA Aerospace Forecasts Fiscal Years 2001-2012.

** Calendar Year

As of: 3/7/2001

Source: APO-110
(202) 493-4236

Aviation Forecasts

Actual Forecast
FY 1999 FY 2003

FAA FACILITY WORKLOAD

Aircraft Handled by FAA ARTCC's (Millions)	44.7	49.0
Air Carrier.....	24.0	26.9
Air Taxi/Commuter.....	7.7	8.5
General Aviation.....	8.8	9.6
Military.....	4.1	4.1
Operations Logged by FAA Towers (Millions)		
Airport.....	68.2	73.9
Instrument.....	51.8	56.5
Flight Services Logged by Flight Services Stations (Millions)	32.4	32.2

CIVIL AVIATION ACTIVITY

Certificated Route Air Carrier

Revenue Passenger Enplanements (Millions)....	629.4	713.3
Revenue Passenger Miles (Billions).....	642.8	756.8

Air Carrier Aircraft..... 5,668 6,856

General Aviation Estimated

Hours Flown (Millions)*.....	29.8	32.7
Active Aircraft (Thousands)*.....	206.5	215.1

ESTIMATED FUEL CONSUMED BY U.S. DOMESTIC

CIVIL AVIATION (Millions of Gallons)

Jet Fuel

Air Carrier.....	19,429	22,287
General Aviation.....	888	1,191

Aviation Gas

Air Carrier.....	2	2
General Aviation.....	313	331

Active Pilots (Thousands)*..... 640.1 702.8

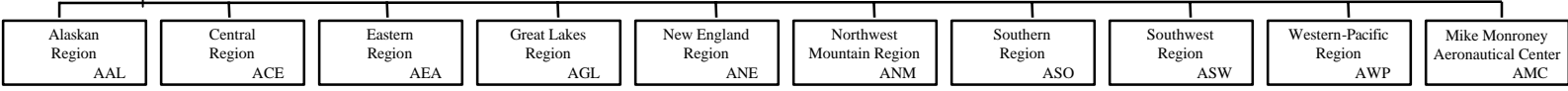
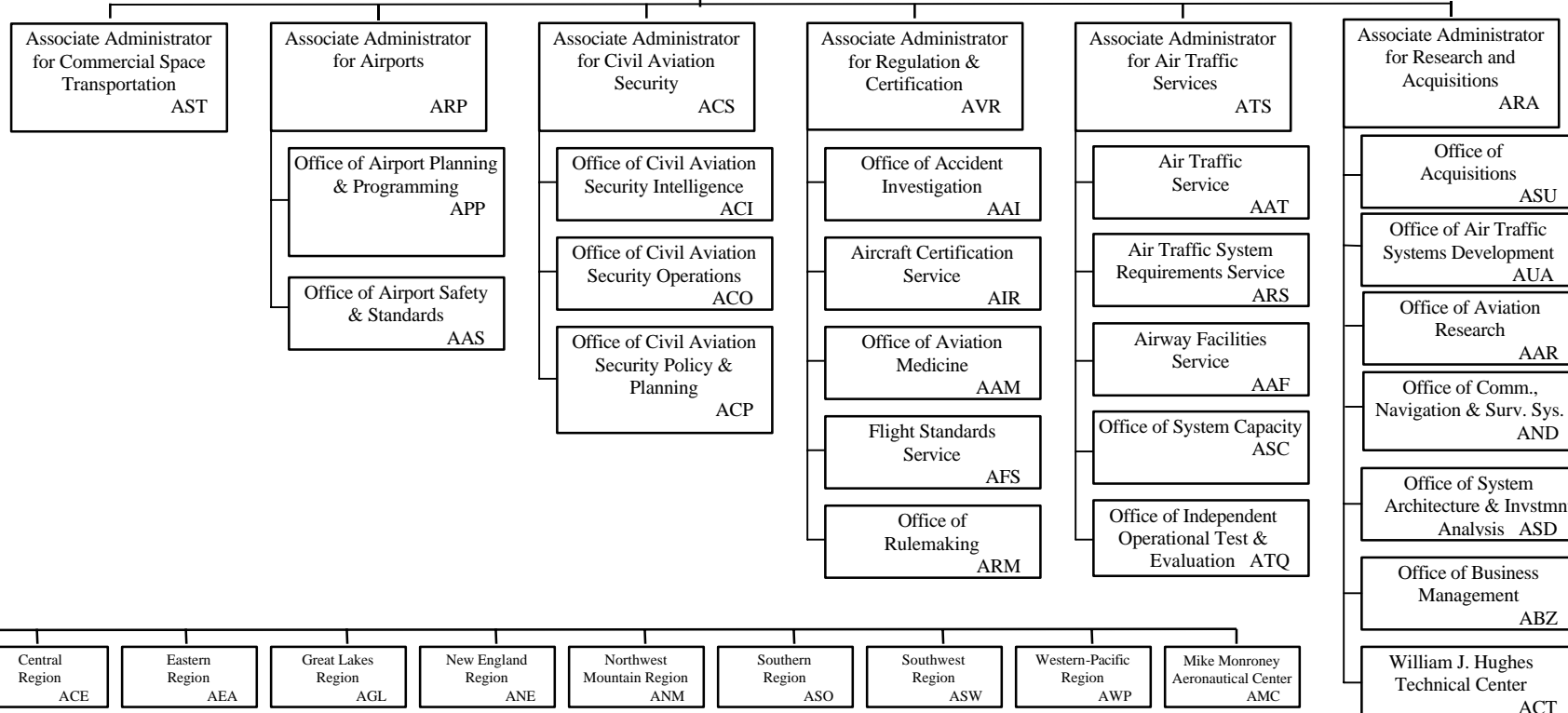
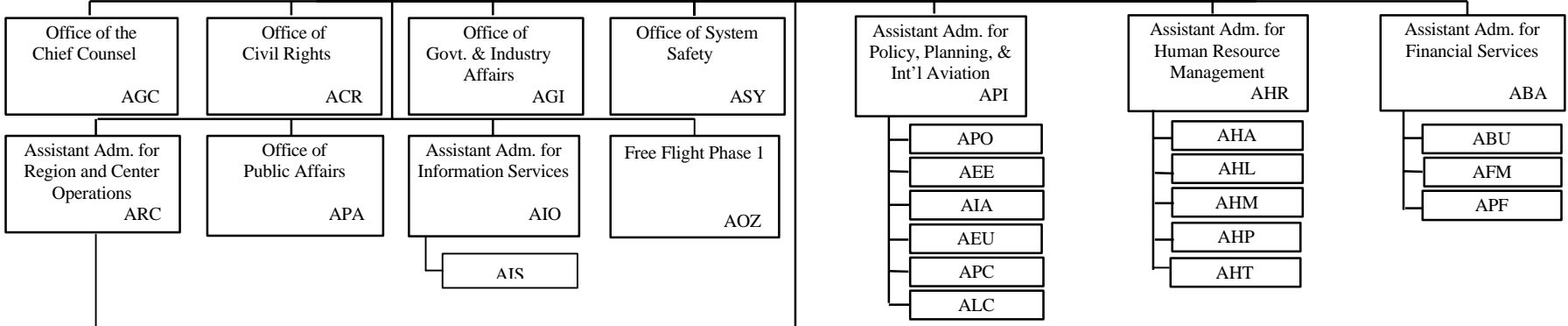
*Calendar Year
As of: 3/2000

Source: APO-110
(202) 493-4236

FEDERAL AVIATION ADMINISTRATION

Administrator
AOA

Deputy
Administrator
ADA



The Associate Administrator for Commercial Space Transportation

Since its establishment in 1984, the primary responsibilities of the Associate Administrator for Commercial Space Transportation (AST) have been to regulate the US commercial space transportation industry and license commercial launches to protect public health and safety, safety of property, national security, and foreign policy interests of the US. The Office is also responsible for encouraging, facilitating and promoting commercial launches by the private sector and for regulating non-federal or commercial space launch sites.

Licenses to conduct commercial launches are granted to commercial launch providers who demonstrate evidence of compliance with all safety regulations and other requirements for conducting commercial space launch activities. Licensees must also have sufficient insurance or financial resources to cover any probable losses from a launch mishap.

Licensed commercial launches are currently conducted at federal launch sites including Cape Canaveral Air Station, Florida; Vandenberg Air Force Base, California; Wallops Flight Facility, Wallops Island, Virginia; and White Sands Missile Range, New Mexico. Four non-federal or commercial sites are now licensed and operational to allow licensed commercial launches and other launch operations. They are the California Spaceport, located at Vandenberg Air Force Base; Spaceport Florida Authority, located at Cape Canaveral; the Virginia Space Flight Center, located on Wallops Island, Virginia; and the Kodiak Launch Complex, located on Kodiak Island, Alaska. The state of New Mexico has a proposal for the development of the Southwest Regional Spaceport in south central New Mexico.

AST Programs and Initiatives

Regulatory and Safety Program

- Licensing, Rulemaking, Insurance Determinations/Risk Assessment, Environmental Compliance, Standards, Compliance Monitoring, Enforcement, Safety Research, Reentry Spacecraft and Operations.

Other Programs and Initiatives

- Launch Technology Development, Customer Service, Industry and Market Analysis, Federal Space Policy Development, International Launch Trade Policy, Community and Educational Outreach

Research Areas

- Flight Safety, Launch Sites, Payload Safety, Standards, GPS, Environmental Issues, Space Safety including Orbital Debris.

World Wide Web Address:

<http://AST.faa.gov/>

U.S. Commercial Space Transportation Activity and AST Licensing

	FY 1999	FY 2000	FY 2001 (Proj.)
Licensed Commercial Launches			
TOTAL	18	12	16
Number of Orbital Launches	18	12	15
Number of Sub-Orbital Launches	0	0	1
By Launch Vehicle Type			
Delta Family (Boeing Company)	7	2	3
Atlas Family (Lockheed Martin)	5	4	3
Pegasus (Orbital Sciences Corp.)	2	2	2
Athena 1&2 (Lockheed Martin)	3	0	1
Iaurus (Orbital Sciences Corp.)	0	1	1
Zenit (KB Yuzhnoye, Ukraine)	1	3	3
Other	1	0	3
By Payload Type			
GEO ¹ Communications Satellites	8	8	9
LEO ² Communications Satellites	5	2	0
Scientific Satellites	3	1	1
Remote Sensing Satellites	3	0	3
Microgravity or Sub-orbital Payloads	0	0	1
Mass Simulator / Testing	1	1	2
By Launch Site (Federal)			
Cape Canaveral Air Station, FL	13	6	6
Vandenberg AFB, CA	4	1	3
Wallops Flight Facility, VA	0	1	0
White Sands Missile Range, NM	0	0	0
Kwajalein Missile Range	1	0	1
By Launch Site (Non-Federal)			
California Spaceport	0	0	0
Spaceport Florida Authority	0	0	0
Virginia Space Flight Center	0	0	0
Pacific Ocean Platform	1	3	3
Kodiak Launch Complex, AK	0	0	1
International Site	0	0	2
Number of Licenses			
New	3	6	8
Renewal	4	1	4
Amendments	18	5	3

¹ GEO: Geosynchronous Earth orbit-approx. 22,300 miles above the equator.

² LEO: Low Earth Orbit- from 100-1000 nautical miles.

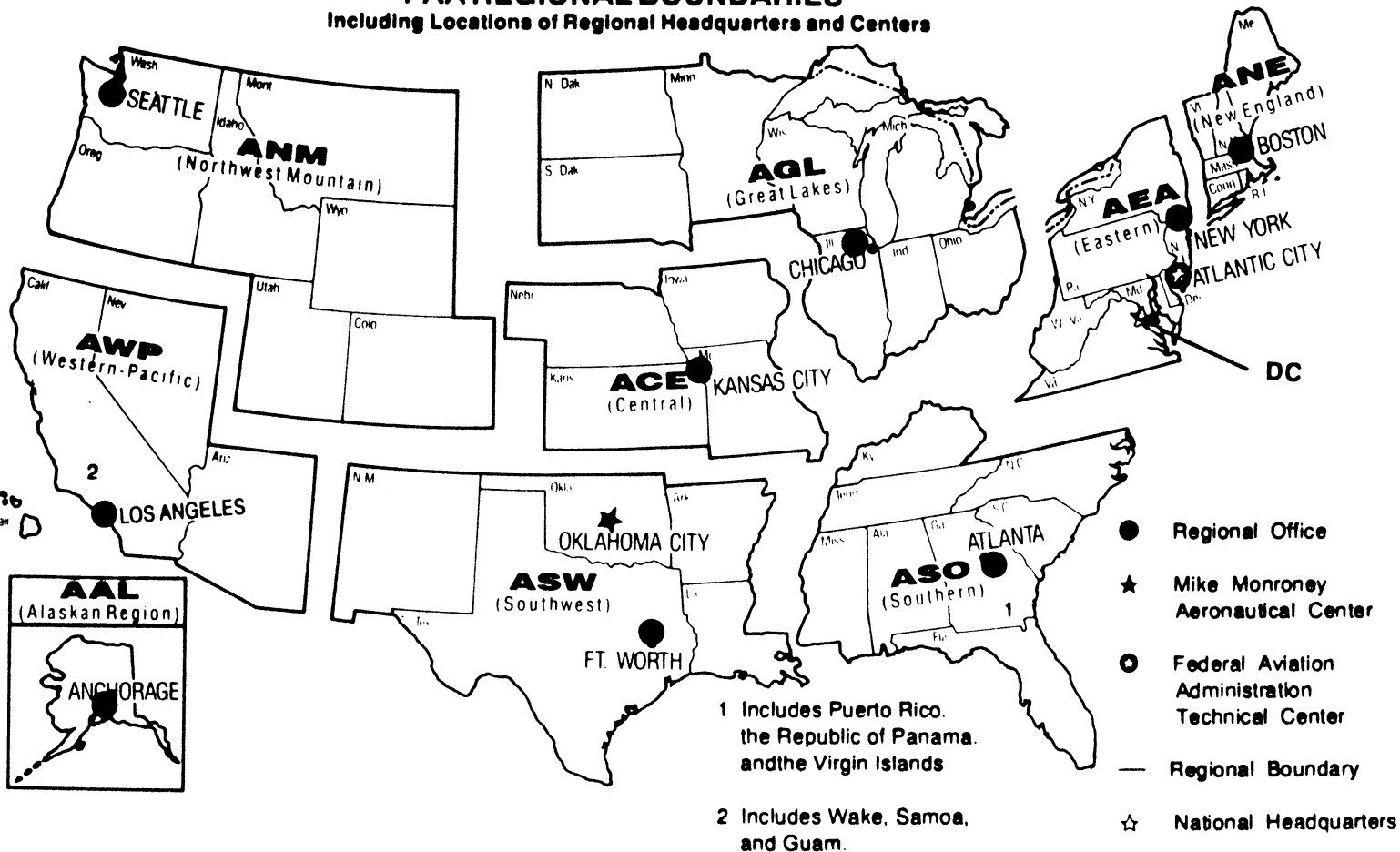
United States Commercial Space Launch Schedule, CY 2001

Payload (Country)/ Description	Launch Company/ Vehicle	Launch Date/ Launch Site	
<i>XM-1 (Int'l)</i> Comm. Satellite	Sea Launch Zenit-3SL	February 28, 2001 Pacific Ocean Platform	
<i>IOS (US)</i> Scientific Payload	InterOrbital Systems Tachyon	March 2001 Pacific Ocean Platform	
<i>XM-1 (International)</i> Comm. Satellite	Sea Launch Zenit-3SL	April 2001 Pacific Ocean Platform	
<i>Orbview 4 (US)</i> Remote Sensig Satellite	Orbital Sciences Corp. Taurus	May 30, 2001 Vandenberg AFB, CA	
<i>Galaxy IIIC (US)</i> Comm. Satellite	Sea Launch Zenit 3SL	May 2001 Pacific Ocean Platform	
<i>DIRECTV-5 (US)</i> Comm. Satellite	Lockheed Martin Atlas IIAS	May 2001 Cape Canaveral, FL	
<i>Orbview 3 (US)</i> Remote Sensing Satellite	Orbital Sciences Corp. Pegasus XL	June 2001 Vandenberg AFB, CA	
<i>HyShot (Int'l)</i> Technology Testing	Astrotech Space Terrier-Orion	June 2001 Woomera, Australia	
<i>HyShot (Int'l)</i> Technology Testing	Astrotech Space Terrier-Orion	June 2001 Woomera, Australia	
<i>Demonstration Satellite (US)</i>	The Boeing Company Delta 4	November 2001 Cape Canaveral, FL	
<i>Earthwatch (US)</i> Remote Sensing Satellite	Lockheed Martin Athena 2	November 2001 Kodiak Launch Complex, AK	
<i>ORBCOMM-5 (US)</i> LEO Comm Satellite	Orbital Sciences Corp. Pegasus	December 2001 Kwajalein Missile Range	

As of 1/19/01

Source: AST-200
(202) 267-8308

**U.S. DEPARTMENT OF TRANSPORTATION
Federal Aviation Administration
FAA REGIONAL BOUNDARIES**
Including Locations of Regional Headquarters and Centers



FAA Resources

FAA Employment (Permanent Employees)¹

	FY 00	FY 01 June
<hr/>		
Line of Business		
Air Traffic Services (ATS).....	35,425	35,450
Regulation and Certification (AVR).....	5,864	5,796
Civil Aviation Security (ACS).....	1,153	1,122
Airports (ARP).....	446	459
Research and Acquisitions (ARA).....	1,898	1,887
Comm. Space Transportation (AST)....	25	26
Staff Offices.....	3,652	3,683
Total.....	48,463	48,424
<hr/>		
Region/Center/Headquarters (included in above total)		
Aeronautical Center.....	1,566	1,587
Alaskan.....	1,358	1,373
Central.....	2,511	2,477
Eastern.....	5,326	5,308
Great Lakes.....	6,515	6,525
New England.....	1,923	1,914
Northwest Mountain.....	4,175	4,168
Southern.....	7,718	7,686
Southwest.....	5,340	5,339
Western-Pacific.....	5,562	5,562
Washington Headquarters (only) ²	3,672	3,702
Washington Headquarters Field ³	1,825	1,817
Technical Center.....	972	965

¹ Full time permanent and part time permanent employees only.

² Washington Headquarters employees physically located in FOB-10A and surrounding areas (i.e. Portals, Market Square, etc.).

³ Washington Headquarters employees physically located in the Field (i.e. Technical Center, Aeronautical Center, etc.)

As of: 6/30/01

Source: APF-100
(202) 267-9946

FAA Percent Minority & Female Employment¹

Lines of Business/Region/Center/Headquarters	% Minority		%Female	
	FY 00	FY 01 Jun	FY 00	FY 01 Jun
AirTraffic Services (ATS).....	16.4	16.4	18.7	18.9
Regulation and Certification (AVR).....	17.4	17.5	28.7	28.7
Civil Aviation Security (ACS).....	27.9	28.1	41.9	42.2
Airports (ARP).....	24.7	25.3	38.1	38.5
Research and Acquisitions (ARA).....	27.4	27.2	37.8	37.8
Commercial Space Transportation (AST).....	32.0	34.6	20.0	32.1
Staff Offices.....	31.9	31.8	53.4	53.5
Total.....	18.5	18.5	24.0	24.1
Aeronautical Center.....	23.8	23.7	42.3	42.5
Alaskan.....	14.0	14.3	25.6	25.8
Central.....	13.8	13.6	24.8	24.7
Eastern.....	15.0	15.0	19.0	19.0
Great Lakes.....	10.7	10.7	20.3	20.3
New England.....	7.6	7.8	21.3	21.3
Northwest Mountain.....	11.8	11.8	22.2	22.5
Southern.....	19.9	19.9	19.9	20.0
Southwest.....	20.2	20.3	20.5	20.4
Western-Pacific.....	28.4	28.2	20.7	20.6
Washington Headquarters (only) ²	33.1	33.3	46.3	46.3
Washington Headquarters Field ³	15.7	15.6	30.2	29.7
Technical Center.....	20.7	20.7	31.8	31.8

¹ Full-time permanent, and part-time permanent employees only (FTE 1111 & 1132).

² Washington Headquarters employees physically located in FOB-10A and surrounding areas (i.e. Portals, Market Square, etc.).

³ Washington Headquarters employees physically located in the Field (i.e. Technical Center, Aeronautical Center, etc.).

Major Work Force Employment

	Employment ¹				
	FY99	FY 00	FY01 June	% Change	Actual Change
Air Traffic Controller Work Force	17,469	17,423	17,504	0.5%	81
ATCS ² (bargaining unit employees)	14,902	14,904	14,973	0.5%	69
Traffic Management Coordinators ²	600	622	787	26.5%	165
Operations Supervisors ²	1,967	1,897	1,744	-8.1%	-153
Flight Service Stations	3,017	2,976	2,919	-1.9%	-57
Field Maintenance (210-211 only)	8,070	7,830	7,862	-3.0%	32
Security Work Force	1,136	1,136	1,117	0.0%	-19
Airports Work Force	480	440	444	-8.3%	4
Research & Acquisition Work Force ³	1,991	1,945	1,952	-2.3%	7
Aircraft Certification	980	992	990	1.2%	-2
Flight Standards Work Force	4,357	4,206	4,192	-3.5%	-14

¹ Full time permanent appointments (operations direct).

² Included in Air Traffic Controller Work Force Total.

³ Includes direct operations, F&E, and R,E&D.

Note: Traffic Management Supervisors (TMS) are no longer included in Controller Work Force.

Source: APF-100
(202) 267-9946

As of: 6/30/01

Labor Relations

	BARGAINING UNITS	LABOR AGREEMENTS	EMPLOYEES REPRESENTED
Unions.....	47	17	38,886
AFGE.....	11	5	1,400
AFSCME (HQ).....	5	0	1,900
LIUNA.....	1	1	150
NAATS.....	1	1	2,400
NAGE.....	3	1	400
NATCA (AT).....	3	1	16,300
NATCA (AF).....	5	1	1,400
NATCA (HQ).....	7	0	1,511
NFFE.....	2	2	1,600
NUDAI.....	1	0	25
PAACE.....	3	2	400
PASS (AF/AEA).....	1	1	7,500
PASS (AVN).....	1	1	250
PASS (AFS).....	2	1	3,500
PASS (AIR).....	1	0	150

AFGE	--American Federation of Government Employees
AFSCME	--American Federation of State, County, and Municipal Employees
LIUNA	--Laborer's International Union of North America
NAATS	--National Association of Air Traffic Specialists
NAGE	--National Association of Government Employees
NACTA	--National Air Traffic Controllers Association
NFFE	--National Federation of Federal Employees
NUDAI	--National Union of Drug Abatement Inspectors
PAACE	--Professional Association of Aeronautical Center Employees
PASS	--Professional Airway System Specialists

As of: 4/23/01

Source: AHL-200
(202) 267-3375

FAA Finances

(In Millions of Dollars)

	FY 2000	FY 2001	FY 2002
	Actual	Est.	Est.
Budget Authority			
Grants-In-Aid (Obligation Limitation).....	1,896	3,193	3,300
Research, Engineering, & Development.....	156	187	188
Facilities and Equipment.....	2,034 ^{1/}	2,651	2,914
Operations.....	5,958 ^{2/}	6,516	6,886
Total.....	10,044	12,547	13,288
Obligations Incurred--Operations			
Appropriation by Budget Activity			
Air Traffic Services.....	4,670	5,185	5,447
Regulation and Certification.....	645	706	745
Civil Aviation Security.....	136	139	150
Research and Acquisitions.....	174	190	197
Commercial Space Transportation.....	6	12	15
Regions/Center Operations.....	85	99	91
Human Resources.....	66	55	75
Financial Services.....	40	48	51
Staff Offices.....	76	105	116
Total.....	5,898	6,539	6,887
Airport Grant Obligations (NET)			
Primary Airports & Cargo.....	612	1,162	1,151
States/Territories/Insular/Alaska Supp.....	353	649	668
Carryover Entitlements.....	136	133	133
Discretionary Fund.....	750	1,196	1,274
Total.....	1,851	3,140	3,226
Total FAA Outlays.....	9,561	11,021	10,558
Trust Fund Receipts from Excise Taxes			
Passenger Ticket Tax.....	5,103	5,273	5,603
Passenger Flight Segment Tax.....	1,655	1,830	2,057
Waybill Tax.....	500	640	683
Fuel Tax.....	887	1,000	1,044
International Departure/Arrival Tax.....	1,349	1,412	1,528
Rural Airports Tax.....	86	91	97
Frequent Flyer Tax.....	159	168	172
Interest on Investment.....	805	871	996
Offsetting Collections.....	144	96	96
Total.....	10,688	11,381	12,276

Numbers may not add due to rounding.

1/ Reflects \$30 million rescission.

2/ Includes \$75 million supplemental and rescission of \$10.8 million in unobligated Y2K balance.

Source: ABU-100
(202) 267-9070

FAA NAS Operational Facilities and FAA Aircraft (As of December 31)

	2000	1999	1998
NAS Operational Facilities¹	40,921	40,360	38,209
Communications.....	14,103	13,901	13,437
Automation.....	3,889	3,802	3,157
Environment.....	6,620	6,391	5,872
Navigation.....	11,211	11,265	11,164
Surveillance.....	1,794	1,764	1,660
Weather.....	3,304	3,237	2,919
Air Traffic Control Facilities²			
Air Route Traffic Control Center.....	21	21	21
Airport Traffic Control Tower.....	496	492	467
Flight Service Stations.....	75	77	76
Automated Flight Service Stations	61	61	61
FAA Aircraft*	50	49	48

¹ Excludes non-federal facilities and foreign facilities.

² Included in NAS operational facilities.

Source: AOP-200
(202) 267-5928
ASW-280*
(405) 954-6231

As of: 12/31/00

FAA Officials

Washington Headquarters

Routing Symbol	Officials
AOA	Administrator Jane F. Garvey, 267-3111 Thomas Zoeller, Chief of Staff, 267-3111
ADA	Deputy Administrator Monte R. Belger (Actg.), 267-8111 Shirley S. Miller (Actg.), Executive Assistant, 267-8111
AOZ*	<i>Free Flight Phase 1</i> <i>Director, Robert S. Voss, 220-3300</i>
AIO	Assistant Administrator for Information Services Daniel J. Mehan, CIO, 493-4570 Deputy, Arthur Pyster, 493-4570
AIS	<i>Office of Information Systems</i> <i>Director, Tom O'Keefe (Actg.), 267-7104</i>
ASY	Assistant Administrator for System Safety Christopher A. Hart, 267-3611 Deputy, Daniel C. Hedges, 267-3611
AGC*	Chief Counsel David G. Leitch, 267-3222 Deputy, James Whitlow, 267-3773
ACR	Assistant Administrator for Civil Rights Fanny Rivera, 267-3254 Deputy, Barbara A. Edwards, 267-3264
AGI	Asst. Administrator for Government & Industry Affairs Quentin Burgess (Actg.), 267-3277 Deputy, Vacant, 267-8211
APA*	Assistant Administrator for Public Affairs Scott M. Brenner, 267-3883 Deputy, Laura Brown, 267-3883
API*	Asst. Administrator for Policy, Planning, and Intl. Aviat. Louise E. Maillett (Actg.), 267-3033 Deputy, Richard Rodine (Actg.), 267-3927
APO	<i>Office of Aviation Policy and Plans</i> <i>Director, John M. Rodgers, 267-3274</i>
AEE	<i>Office of Environment and Energy</i> <i>Director, Carl Burleson, 267-3576</i>
AIA	<i>Office of International Aviation</i> <i>Director, Eugene Ross Hamory, 267-8112</i>
ARC	Assistant Administrator for Region/Center Operations Ruth Leverenz, 817-222-5001 / 202-267-7369

FAA Officials

Washington Headquarters--(Cont)

Routing Symbol	Officials
ABA*	Assistant Administrator for Financial Services Christoph P. Bertram, CFO, 267-9105 Deputy, John F. Hennigan, 267-8928
ABU	<i>Office of Budget</i> Director, J. Brian Riley, 267-8010
AFM	<i>Office of Financial Management</i> Director, Patrick J. Heidenthal (Actg.), 267-7112
APF	<i>Office of Cost and Performance Management</i> Director, Penny Metford (Actg.), 267-7140
AHR	Assistant Administrator for Human Resource Management Glenda Tate, 267-3456 Deputy, Mary Ellen Dix, 267-3850
AHP	<i>Office of Personnel</i> Director, Roger M. Edwards, 267-3850
AHL	<i>Office of Labor & Employee Relations</i> Director, Melvin Harris, 267-3979
AHD	<i>Office of Organization, Learning & Development</i> Director, Paul Longanbach, 267-9041
AHM	<i>Center for Management Development</i> Director, Woodie Woodward, 904-446-7136
AHA	<i>Office of the Accountability Board</i> Director, Barbara J. Smith, 267-8015
AST	Assoc. Adm. for Commercial Space Transportation Patricia Grace Smith, 267-7793 Deputy, Joseph A. Hawkins, 267-7848
ARP	Associate Administrator for Airports Woodie Woodward (Actg.), 267-9471 Deputy, Paul L. Galis, 267-8738
APP	<i>Office of Airport Planning & Programming</i> Director, Catherine M. Lang, 267-8775
AAS	<i>Office of Airport Safety and Standards</i> Director, David L. Bennett, 267-3053
ACS*	Associate Administrator for Civil Aviation Security Michael A. Canavan, 267-9863 Deputy, Lynne A. Osmus, 267-3969
ACI	<i>Office of Civil Aviation Security Intelligence</i> Director, Patrick T. McDonnell, 267-9075
ACO	<i>Office of Civil Aviation Security Operations</i> Director, Lee Longmire, 267-8537
ACP	<i>Office of Civil Aviation Security Policy and Planning</i> Director, Jan Brecht-Clark, 267-8058

FAA Officials

Washington Headquarters--(Cont.)

Routing Symbol	Officials
AVR	Associate Administrator for Regulation & Certification Thomas E. McSweeney, 267-3131 Deputy, Peggy Gilligan, 267-7804
AAI	<i>Office of Accident Investigation</i> Director, Steven B. Wallace, 267-9612
AIR	<i>Aircraft Certification Service</i> Director, John J. Hickey, 267-8235
AAM	<i>Office of Aviation Medicine</i> Director, Jon L. Jordon, MD, 267-3535
AFS*	<i>Flight Standards Service</i> Director, Nicholas A. Sabatini, 267-8237
ARM	<i>Office of Rulemaking</i> Director, Anthony F. Fazio, 267-9677
ATS	Associate Administrator for Air Traffic Services Steven J. Brown (Actg.), 267-1111 Deputy, Peter H. Challan, 267-3133
AAT	<i>Air Traffic Service</i> Director, Bill G. Peacock, 267-3666
AAF	<i>Airway Facilities Service</i> Director, Alan Moore, 267-8181
ASC	<i>Office of System Capacity and Requirements</i> Director, Paula R. Lewis, 267-7370
ATQ	<i>Independent Operational Test and Evaluation</i> Director, A. Martin Phillips, 267-3341
AKS*	<i>Air Traffic System Requirements Service</i> Director, James H. Washington, 385-7500
ATB*	<i>Terminal Business Service</i> Director, William Voss (Actg.), 264-3500
ARI	<i>Runway Safety</i> Director, William S. Davis, 267-9131
ARA	Associate Administrator for Research and Acquisitions Steven Zaidman, 267-7222 Deputy, Dennis DeGaetano, 267-7222
ASU	<i>Office of Acquisitions</i> Director, Gilbert B. Devey, 267-8513
AUA	<i>Office of Air Traffic Systems Development</i> Director, Gregory D. Burke (Actg.), 493-0313
AAR	<i>Office of Aviation Research</i> Director, Herman Redless, Ph.D., 267-9251
AND	<i>Office of Communications, Navigation, & Surveillance Sys.</i> Director, Carl McCullough, 267-3555
ASD	<i>Office of System Architecture and Investment Analysis</i> Director, John A. Scardina, 358-5238
ABZ	<i>Office of Business Management</i> Director, Lauraline Gregory, 267-3616

Duty Officer

(202) 267-3333

FAA Officials

Major Field Organizations

Routing Symbol	Officials
AAL	Alaskan Region, Regional Administrator Patrick N. Poe, 907-271-5645 222 West 7th Avenue, Box 14 Anchorage, Alaska 99513-7587 Duty Officer, 907-271-5936
ACE	Central Region, Regional Administrator John E. Turner, 816-329-3050 901 Locust Kansas City, Missouri 64106 Duty Officer, 816-329-3000
ACT	William J. Hughes Technical Center, Director Anne Harlan, Ph.D., 609-485-6641 Atlantic City International Airport New Jersey 08405 Duty Officer, 609-485-6482
AEA	Eastern Region, Regional Administrator Arlene B. Feldman, 718-553-3000 1 Aviation Plaza 159-30 Rockaway Blvd. Jamaica, New York 11434-4809 Duty Officer, 718-553-3100
AGL	Great Lakes Region, Regional Administrator Cecelia Hunziker, 847-294-7294 2300 East Devon Avenue Des Plaines, Illinois 60018 Duty Officer, 847-294-8400
AMC	Mike Monroney Aeronautical Center, Director Lindy Ritz, 405-954-4521 6500 South MacArthur Oklahoma City, Oklahoma 73125 Duty Officer, 405-954-3583

FAA Officials

Major Field Organizations--(Cont.)

Routing Symbol	Officials
ANE	New England Region, Regional Administrator Robert S. Bartanowicz, 781-238-7020 12 New England Executive Park Burlington, Massachusetts 01803 Duty Officer, 781-238-7001
ANM	Northwest Mountain Region, Regional Administrator Larry Andriesen, 425-227-2001 1601 Lind Avenue, S.W. Renton, Washington 98055-4056 Duty Officer, 425-227-2000
ASO	Southern Region, Regional Administrator Carolyn Blum, 404-305-5000 1701 Columbia Avenue College Park, Georgia 30337 Duty Officer, 404-305-5180
ASW	Southwest Region, Regional Administrator Ruth Leverenz, 817-222-5001 2601 Meacham Blvd. Ft. Worth, Texas 76137-4298 Duty Officer, 817-222-5006
AWP	Western-Pacific Region, Regional Administrator William C. Withycombe, 310-725-3550 15000 Aviation Boulevard Hawthorne, California 90261 Duty Officer, 310-725-3300

FAA Officials

International Area Offices

Routing Symbol	Officials
AEU	Europe, Africa, & Middle East Area Office, Director Paul Feldman (Actg.), 011.32.2.508.2700 American Embassy, Brussels PSC 82 Box 002 APO AE 09724-1011
ALC	Latin America & Caribbean Area Office, Director Joaquin Archilla, 305-716-3300 8600 NW 36th Street Miami, FL 33166
APC	Asia-Pacific Area Office, Director David L. Knudson (Actg.), 011.65.543.1466 American Embassy 27 Napier Road Singapore 258508

FAA STRATEGIC PLAN

SAFETY

GOAL: *By 2007, reduce U.S. aviation fatal accident rates by 80% from 1996 levels.*

Outcome Measures:

Fatal Aircraft Accident Rate: By 2007, reduce the U.S. aviation fatal accident rate per aircraft departure, as measured by a three-year moving average, by 80 percent from the three-year average of 1994-96.

Overall Aircraft Accident Rate: Reduce the rate per aircraft departure.

Fatalities and Losses by Type of Accident: Reduce the number and type of fatalities and losses from accidents that occur for each major type of accident.

Occupant Risk: Reduce the risk of mortality to a passenger or flight crew member on a typical flight.

Strategic Focus Areas:

Regulatory Reform: Implement a regulatory process that is timely, responsive, and consistently applied.

Safety information Sharing and Analysis: Develop partnerships with the aviation community to share data and information supporting safe, secure aviation.

Surveillance/Inspection: Develop new approaches to working with others on inspection and surveillance and targeting FAA resources where they will do the most good.

Accident Prevention: Based on detailed root cause analysis, prevent accidents before they happen through appropriate, targeted, systematic interventions in the aviation system.

As of 3/31/99

Source: APO-120
(202) 267-3220

Security

GOAL: Prevent security incidents in the aviation system.

Outcome Measures:

Explosive Device and Weapons Detection: Increase ability to detect improvised explosive devices (through use of simulants) and weapons with no significant increase in operational impact - in checked and carry-on baggage and on the person.

Compliance with Security Requirements: Increase as measured by compliance audits.

Risk and Vulnerability at Airports and Airway Facilities: Reduce as measured by risk assessments.

Strategic Focus Areas:

New Security Baseline: Continue to improve the baseline security system for civil aviation.

Performance and Procedures: Maximize the performance capability of people working in security for air carriers and airport operators and at FAA facilities.

Information Security Architecture: Develop a systematic information security architecture that describes the future NAS information security system FAA will build toward.

SYSTEM EFFICIENCY

GOAL: Provide an aerospace transportation system that meets the needs of users and is efficient in the application of FAA and aerospace resources.

Outcome Measures:

System Flexibility: Reduce total number of published ATC preferential routes by 7%.

User Access: Reduce the average call waiting times for Automated Flight Service Stations (AFSS) by 20%.

System Delays: Reduce the rates of volume and equipment related delays by 20%.

Strategic Focus Areas:

NAS Modernization: Using the NAS Architecture as the guideline, continually refine and update the NAS to achieve efficient aerospace systems and operations.

Free Flight: Within safety consideration, work toward giving aircraft the opportunity to fly in the way that gives them the most benefit as they define it.

Systems Integration: Integrate airport and commercial space requirements into NAS planning and architecture.

ENABLING GOALS:

People: The Foundation of Accomplishment

Provide a model work environment supporting the productive, diverse, and highly skilled workforce needed to carry out the FAA mission into the twenty-first century. To accomplish this, FAA will focus on:

Intellectual Capital

Managing the Diverse Work Force

Quality of Work Life

Reform: The Framework for Accomplishment

Fundamentally change the way the FAA operates by implementing personnel and acquisition reform and pursuing financial reform. FAA will focus on:

Acquisition Reform

Personnel Reform

Financial Reform

The Environment: Our Responsibility

Address what may represent the single greatest challenge to the continued growth and prosperity of civil aerospace as we enter the twenty first century, focusing on:

Understanding Aerospace Environmental Impacts

Reducing Aerospace Environmental Impacts of FAA Activities

Quantify and Mitigate Environmental Impacts of FAA Activities

Global Leadership: Commitment to Worldwide Improvements

Improve safety, security and system efficiency globally through:

International Safety Oversight

Global Safety Action Plan

Global CNS/ATM Development and Implementation

International Regulatory Harmonization

2001

January

	1	2	3	4	5	6
7	8	9	10	11	12	13
14	15	16	17	18	19	20
21	22	23	24	25	26	27
28	29	30	31			

March

				1	2	3
4	5	6	7	8	9	10
11	12	13	14	15	16	17
18	19	20	21	22	23	24
25	26	27	28	29	30	31

May

		1	2	3	4	5
6	7	8	9	10	11	12
13	14	15	16	17	18	19
20	21	22	23	24	25	26
27	28	29	30	31		

July

1	2	3	4	5	6	7
8	9	10	11	12	13	14
15	16	17	18	19	20	21
22	23	24	25	26	27	28
29	30	31				

September

						1
2	3	4	5	6	7	8
9	10	11	12	13	14	15
16	17	18	19	20	21	22
23	24	25	26	27	28	29
30						

November

				1	2	3
4	5	6	7	8	9	10
11	12	13	14	15	16	17
18	19	20	21	22	23	24
25	26	27	28	29	30	

February

				1	2	3
4	5	6	7	8	9	10
11	12	13	14	15	16	17
18	19	20	21	22	23	24
25	26	27	28			

April

1	2	3	4	5	6	7
8	9	10	11	12	13	14
15	16	17	18	19	20	21
22	23	24	25	26	27	28
29	30					

June

					1	2
3	4	5	6	7	8	9
10	11	12	13	14	15	16
17	18	19	20	21	22	23
24	25	26	27	28	29	30

August

			1	2	3	4
5	6	7	8	9	10	11
12	13	14	15	16	17	18
19	20	21	22	23	24	25
26	27	28	29	30	31	

October

	1	2	3	4	5	6
7	8	9	10	11	12	13
14	15	16	17	18	19	20
21	22	23	24	25	26	27
28	29	30	31			

December

						1
2	3	4	5	6	7	8
9	10	11	12	13	14	15
16	17	18	19	20	21	22
23	24	25	26	27	28	29
30	31					