



U.S. Department
of Transportation
**Federal Aviation
Administration**

ADMINISTRATOR'S FACT BOOK

January 2001

Produced by: APF-100
Updated Quarterly

Web site: <http://www.atctraining.faa.gov/factbook>



FAA VISION

To provide the safest, most efficient and responsive aerospace system in the world, and to be the best Federal employer, continuously improving service to customers and employees.

FAA Mission

FAA provides a safe, secure, and efficient global aerospace system that contributes to national security and the promotion of US aerospace safety.

As the leading authority in the international aerospace community, FAA is responsive to the dynamic nature of customer needs, economic conditions, and environmental concerns.

FAA VALUES

We Believe in

- ☆ *Trust*
- ☆ *Integrity*
- ☆ *Honesty*
- ☆ *Involvement*
- ☆ *Teamwork*
- ☆ *Diversity*
- ☆ *Respect*

We Are Committed To

- ☆ *Responsiveness*
- ☆ *Quality*
- ☆ *Timeliness*
- ☆ *Fiscal Responsibility*
- ☆ *Accountability*
- ☆ *Communication*

We Will Achieve These Values By

- ☆ *Giving people what they need, then letting them do their jobs.*
- ☆ *Making timely decisions at the lowest level and respecting them.*
- ☆ *Committing our best to our customers.*
- ☆ *Valuing our people.*
- ☆ *Being open to new ideas.*
- ☆ *Speaking out for what we believe, even when it is unpopular.*
- ☆ *Recognizing each person's contributions and realizing each person's full potential.*
- ☆ *Collaborating across organizations.*
- ☆ *Taking pride in what we do.*

Table of Contents

FAA Vision and Mission.....	Inside Front Cover
FAA Values	Inside Back Cover

Safety

Aviation Accidents by Type of Operations.....	3*
Aviation Accident Rates by Type of Operation	4*
Airspace Incidents by Incident Type	5*
Airspace Incident Rates by Incident Type	6*
Worldwide Hijackings	7*
NTSB U.S. Transportation Fatalities	8

FAA Air Traffic

FAA Air Traffic Activity	9*
Air Route Traffic Control Center Activity	10*
50 Busiest FAA Air Traffic Control Towers.....	11*
50 Busiest Approach Control Facilities.....	13*
Automated Flight Service Station Activity.....	15*

Airports

Number of U.S. Airports.....	17*
National Airspace Systems Delays	18*

Aircraft

U.S. Air Carrier Activity	19
U.S. General Aviation Activity.....	20
Aircraft Certification Service	21

Airmen

Active Pilots and Nonpilots.....	22
----------------------------------	----

Industry Trends

Scheduled U.S. Air Carrier Traffic & Fin. Trends	23*
U.S. Commercial Space Trans. Financial Trends	24*
Aviation Forecasts	25

FAA Organizational Chart.....	Center Fold
-------------------------------	-------------

Table of Contents (cont.)

Commercial Space Transportation

Associate Administrator for Commercial Space Transportation (AST).....	28
AST Licensing and Industry Activity.....	29*
U.S. Commercial Space Launch Schedule.....	30*
<i>FAA Regional Boundaries Map</i>	31

FAA Resources

FAA Major Work Force Employment.....	32*
FAA Employment	33*
FAA Percent Minority and Women Employment.....	34*
Labor Relations.....	35
FAA Finances	36
FAA Facilities and Aircraft	37

Organization

FAA Officials–Washington Headquarters	38*
FAA Officials–Major Field Organizations	41*
FAA Officials--International Offices	43*
FAA Goals and Objectives	44

For further information call APF-100 (202-267-9946)

*Updated this issue

Distribution: A-WXYZE-3; A-FOF-O(STD)

Aviation Accidents by Type of Operation

Type of Operation	Year	Jan	Feb	Mar	Apr	May	Jun	Jul	Aug	Sep	Oct	Nov	Dec	Year Total
Large Air Carrier	1999	3	5	4	2	5	7	6	3	7	5	3	2	52
	2000	2	7	7	5	4	2	3	5	6	4	6	3	54
Commuter	1999	0	0	1	2	0	1	0	0	2	4	0	3	13
	2000	0	3	3	0	1	1	0	1	2	1	0	0	12
Air Taxi	1999	6	6	7	10	0	7	3	11	6	5	5	7	73
	2000	5	5	6	6	7	4	9	9	11	6	7	5	80
General Aviation	1999	92	98	118	144	223	199	244	236	200	140	103	115	1,912
	2000	91	107	129	158	173	191	248	220	181	151	101	92	1,842
Rotorcraft*	1999	9	15	12	15	9	31	18	19	24	19	16	11	198
	2000	14	12	20	21	25	20	23	17	17	16	6	17	208

* Part 135 and US registered general aviation rotocraft accidents.

Note: Preliminary data and subject to change.

As of: 1/24/01

Source: AAI-200

(202) 267-3279

Aviation Accident Rates by Type of Operation

Type of Operation	1996		1997		1998		1999		% Chg 97-98	
	Number	Rate	Number	Rate	Number	Rate	Number	Rate	Number	Rate
Large Air Carriers.....	38	.28	48	.31	50	.29	52	.29	4%	0%
Commuter.....	11	.40	16	1.6	8	2.3	13	4.8	63%	109%
Air Taxi.....	90	4.44	83	3.64	78	3.03	77	2.71	-1%	-11%
General Aviation.....	1,907	7.67	1,855	7.28	1,908	7.12	1,908	7.05	0%	-1%

Accident Rates are per 100,000 Flight Hours

Rotocraft rates discontinued, currently under review.

Note: Preliminary data and subject to change.

As of: 1/24/01

Source: AAI-200

(202) 267-3279

Airspace Incidents by Incident Type

Incident Type	Year	Jan	Feb	Mar	Apr	May	Jun	Jul	Aug	Sep	Oct	Nov	Dec	Year Total
Near Midair Collisions	1999	21	18	23	19	18	22	24	31	22	24	20	15	257
	2000	14	16	25	17	24	19	27	24	22	21	11		220
Pilot Deviations	1999	114	109	112	127	128	141	181	135	136	171	131	145	1,630
	2000	125	155	184	179	202	178	173	189	148	154	130		1,817
Operational Errors	1999	60	68	86	81	76	74	94	97	77	104	70	105	992
	2000	65	85	102	93	114	115	103	89	102	97	99		1,064
Vehicle Pedestrian Deviations	1999	21	18	33	30	28	35	40	46	47	49	23	31	401
	2000	44	42	38	51	46	62	47	44	56	42	29		501
Surface Incidents	1999	67	52	69	77	84	90	112	100	109	116	77	96	1,049
	2000	90	104	117	120	138	149	126	127	119	119	82		1,291
Runway Incursions*	1999	28	21	17	22	29	28	39	23	33	24	25	32	321
	2000	24	24	36	33	39	44	41	47	33	41	32		394

Note: Preliminary data and subject to change.

N/A: Not available at time of update.

As of: 12/05/00

*As of: 12/05/00

Source: ATX-400

(202) 267-9630

*ATS-20

(202) 493-4307

Airspace Incident Rates by Incident Type

Incident Type	Percent Change									
	1996		1997		1998		1999		1998 - 1999 (4)	
	Number	Rate	Number	Rate	Number	Rate	Number	Rate	Number	Rate
Operational Errors (1).....	791	.53	790	.51	894	.56	992	.61	11%	9%
Pilot Deviations (2).....	1,275	.86	1,494	.97	1,591	1.00	1,630	.99	2%	-1%
Surface Incidents (3)	692	1.12	813	1.26	832	1.26	1,049	1.52	26%	21%
Runway Incursions (3)*...	275	.45	292	.45	325	.49	321	.47	-1%	-4%

(1) Per 100,000 Facility Activities

(2) Per 100,000 Flight Hours

(3) Per 100,000 Airport Operations

(4) Calculations use fifteen decimal places for rates (rounded two places for display).

Note: Preliminary data subject to change.

As of: 12/05/00

*As of 12/05/00

Source: ATX-400

(202) 267-9630

*ATS-20

(202) 493-4307

Worldwide Hijackings

Incidents	CY 2000	CY 1999	CY 1998	CY 1997
U.S. Sched. Air Carrier Aircraft.....	0	0	0	0
U.S. General Aviation Aircraft.....	0	0	0	0
Foreign Aircraft.....	19	12	9	11

Preliminary data.
As of: 12/31/00

Source: ACI-200
(202) 267-3483

National Transportation Safety Board

1998-1999 U.S. Transportation Fatalities

	1998	1999 ¹
Highway		
Passenger cars.....	21,141	20,771
Light Trucks and Vans.....	10,665	11,208
Pedestrians.....	5,228	4,906
Motorcycles.....	2,292	2,471
Pedalcycles.....	757	746
Medium and heavy trucks.....	739	755
Buses.....	38	58
All Other.....	641	696
Total.....	41,501	41,611
Grade Crossings ²	(431)	(432)
Rail		
Intercity		
Trespassers and Nontrespassers..... ³	601	530
Employees and Contractors.....	34	43
Passengers on trains.....	4	14
Light and commuter rail..... ⁴⁻⁵	192	218
Total.....	831	805
Marine		
Recreational Boating.....	815	729
Cargo Transport.....	52	42
Commercial fishing..... ⁶	66	46
Commercial Passengers.....	17	36
Total.....	950	853
Aviation		
General Aviation.....	623	628
Airlines.....	1	12
Air Taxi.....	48	38
Commuter.....	0	12
Foreign/Unregistered..... ⁷	16	1
Total.....	688	691
Pipeline		
Gas.....	17	22
Liquids.....	1	4
Total.....	18	26
GRAND TOTAL.....	43,988	43,986

1 1999 figures are preliminary estimates supplied by modal agencies within DOT.

2 Grade crossing fatalities are not counted as a separate category for determining the grand totals because they are included in the highway and rail categories, as appropriate.

3 Does not include motor vehicle occupants killed at grade crossings.

4 1998 figure includes heavy rail fatalities (54) reported by the Federal Transit Administration (FTA).

5 Fatalities reported to the FTA for commuter rail operations may also be reported to the Federal Rail Administration and included in the intercity railroad fatalities.

6 Refers to only operational fatalities.

7 Includes non-U.S. registered aircraft involved in accidents in the U.S.

Air Traffic

FAA Air Traffic Activity (In Thousands)

Aircraft Handled by FAA ARTCC's	Jan-Nov 2000*	Jan-Nov 1999	Jan-Dec 1999
Air Carrier.....	22,999	22,217	24,324
Air Taxi.....	7,496	7,150	7,822
General Aviation.....	8,062	8,121	8,769
Military.....	3,893	3,705	4,021
TOTAL....	42,450	41,193	44,936
Airport Operations Logged by FAA Towers			
Air Carrier.....	13,650	13,376	14,591
Air Taxi.....	8,467	8,494	9,177
General Aviation.....	24,238	26,869	28,658
Military.....	1,884	1,998	2,148
TOTAL....	48,239	50,737	54,574
Instrument Operations Logged by FAA Towers			
Air Carrier.....	14,954	14,652	16,002
Air Taxi.....	10,318	10,240	11,104
General Aviation.....	19,021	19,291	20,732
Military.....	3,186	3,214	3,456
TOTAL....	47,479	47,397	51,294
Flight Services Logged by:			
Flight Service Stations.....	761	721	803
Automated Flight Service Stations.....	31,092	28,325	33,028
TOTAL....	31,853	29,046	33,831

*Preliminary
As of: 11/30/00

Source: APO-130
(202) 267-3350

Air Route Traffic Control Center Activity

CY 99 Rank	Center	Aircraft Handled (000's)		
		Jan-Nov 2000*	Jan-Nov 1999	Jan-Dec 1999
1	Cleveland, OH.....	2,960	2,885	3,147
2	Chicago, IL.....	2,701	2,631	2,868
3	Atlanta, GA.....	2,726	2,604	2,842
4	New York, NY.....	2,683	2,586	2,827
5	Washington, DC.....	2,554	2,434	2,657
6	Indianapolis, IN.....	2,478	2,418	2,637
7	Jacksonville, FL.....	2,109	2,013	2,200
8	Kansas City, KS.....	2,033	2,014	2,191
9	Fort Worth, TX.....	2,059	2,007	2,188
10	Memphis, TN.....	2,065	2,003	2,181
11	Miami, FL.....	1,998	1,971	2,157
12	Minneapolis, MN.....	1,979	1,952	2,125
13	Los Angeles, CA.....	1,988	1,921	2,097
14	Albuquerque, NM.....	1,905	1,899	2,079
15	Houston, TX.....	1,929	1,867	2,035
16	Boston, MA.....	1,762	1,710	1,860
17	Denver, CO.....	1,589	1,528	1,668
18	Oakland, CA.....	1,545	1,494	1,631
19	Seattle, WA.....	1,337	1,318	1,435
20	Salt Lake City, UT.....	1,422	1,310	1,432
21	Anchorage, AK.....	524	535	576
22	Guam **	102	93	102

*Preliminary

**Center Radar Approach Control (CERAP)

As of: 11/30/00

Source: APO-130
(202) 267-3350

50 Busiest FAA Airport Traffic Control Towers

Airport Operations (000's)

CY 99 Rank	Tower and State	Airport Operations (000's)		
		Jan-Nov 2000*	Jan-Nov 1999	Jan-Dec 1999
1	Atlanta International, GA.....	841	831	910
2	Chicago/O'Hare Int'l., IL.....	838	823	897
3	Dallas/Ft. Worth Int'l., TX.....	798	793	867
4	Los Angeles Int'l, CA.....	717	712	779
5	Van Nuys, CA.....	447	552	599
6	Phoenix Sky Harbor Int'l, AZ.....	585	515	564
7	Detroit Metro Wayne Co., MI.....	513	513	560
8	Las Vegas/McCarran Int'l, NV.....	479	498	543
9	Metropolitan Oakland Int'l.....	413	477	524
10	Miami International, FL.....	472	472	517
11	Minneapolis-St. Paul Int'l, MN.....	481	467	510
12	Boston/Logan Int'l, MA.....	471	462	502
13	Lambert-St. Louis Int'l, MO.....	447	461	501
14	Denver International, CO.....	484	458	501
15	Long Beach/Daugherty, CA.....	352	461	499
16	Washington Dulles Int'l, VA.....	446	441	483
17	Philadelphia Int'l, PA.....	445	439	480
18	Covington/Cincinnati Int'l, KY.....	443	436	476
19	Santa Ana/John Wayne, CA.....	359	435	471
20	Houston/G Bush Intercont'l, TX.....	450	423	463
21	Newark International, NJ.....	420	424	463
22	Charlotte/Douglas Int'l, NC.....	422	407	445
23	San Francisco Int'l, CA.....	397	403	440
24	Pittsburgh International, PA.....	413	401	438
25	Denver/Centennial.....	374	407	436

*Preliminary 1 Missing 2000 data

Source: APO-130
(202) 267-3350

As of: 11/30/00

50 Busiest FAA Airport Traffic Control Towers

CY 99 Rank	Tower and State	Airport Operations (000's)		
		Jan-Nov 2000*	Jan-Nov 1999	Jan-Dec 1999
26	Seattle Tacoma Int'l, WA.....	410	399	434
27	Memphis International, TN.....	354	343	375
28	Salt Lake City Int'l, UT.....	338	339	369
29	La Guardia, NY.....	358	337	368
30	Orlando International, FL.....	336	332	364
31	Orlando/Sanford, FL.....	341	333	363
32	Daytona Beach, FL.....	350	341	363
33	John F. Kennedy Int'l, NY.....	332	326	356
34	Pontiac/Oakland Co. Int'l, MI ¹	292	324	347
35	Honolulu International, HI.....	316	319	346
36	Fort Worth Meacham, TX.....	283	314	338
37	Prescott/E. A. Love Field, AZ.....	298	317	337
38	Washington National, DC.....	317	307	335
39	Seattle/Boeing Field, WA.....	344	306	327
40	Portland International, OR.....	293	295	322
41	Cleveland Hopkins Int'l, OH.....	307	294	321
42	Anchorage International, AK.....	299	292	311
43	San Jose International, CA.....	277	282	305
44	Baltimore/Wash. Int'l, MD.....	289	278	303
45	Chicago Midway, IL.....	277	273	298
46	Carlsbad/McClellan Pal., CA ¹	214	268	292
47	Raleigh/Durham Int'l, NC.....	273	267	291
48	Phoenix-Deer Valley, AZ.....	340	262	262
49	Fort Lauderdale/Hollywood, FL.....	266	257	281
50	Tucson International, AZ.....	233	256	279

50 Busiest Radar Approach Control Facilities

CY 99 Rank	Facilities/State	Instrument Ops (000s)		
		Jan-Nov 2000*	Jan-Nov 1999	Jan-Dec 1999
1	Southern Calif. TRACON, CA.....	2,252	2,124	2,333
2	New York TRACON, NY.....	1,930	1,909	2,075
3	Dallas/Ft Worth, TRACON, TX.....	1,288	1,265	1,382
4	Chicago TRACON, IL.....	1,296	1,253	1,363
5	Atlanta International, GA.....	1,060	1,042	1,139
6	Bay TRACON, CA.....	987	982	1,072
7	Miami International, FL.....	910	896	982
8	Houston TRACON, TX.....	787	774	845
9	Detroit TRACON, MI ¹	645	723	787
10	Washington Dulles Int'l, VA.....	692	682	744
11	Phoenix TRACON, AZ.....	700	670	734
12	Philadelphia International, PA.....	634	634	691
13	Minneapolis TRACON, MN.....	649	634	690
14	Denver TRACON, CO.....	659	625	681
15	Las Vegas TRACON, NV.....	626	623	678
16	St Louis TRACON, MO.....	583	599	650
17	Orlando International, FL.....	595	588	641
18	Boston TRACON, MA.....	592	571	619
19	Washington National, DC.....	580	561	612
20	Covington/Cincinnati Int'l, KY.....	567	557	607
21	Seattle/Tacoma TRACON, WA.....	568	555	601
22	San Juan CERAP, PR.....	576	532	589
23	Tampa International, FL.....	547	529	579
24	Daytona Beach Int'l, FL.....	579	533	573
25	Charlotte/Douglas Int'l, NC.....	537	515	562

* Preliminary ¹Missing 2000 data

Source: APO-130
(202) 267-3350

As of: 11/30/00

50 Busiest Radar Approach Control Facilities

CY 99 Rank	Facilities/State	Instrument Ops (000's)		
		Jan-Nov 2000*	Jan-Nov 1999	Jan-Dec 1999
26	Salt Lake City TRACON, UT.....	530	514	554
27	Pittsburgh International, PA.....	509	500	546
28	Baltimore-Washington Int'l, MD.....	498	492	535
29	Jacksonville Int'l, FL.....	462	468	506
30	Honolulu CERAP, HI.....	469	465	505
31	Memphis International, TN.....	439	423	462
32	Sacramento RAPCON, CA.....	428	414	449
33	San Antonio Int'l, TX.....	410	408	443
34	Cleveland Hopkins Int'l, OH.....	395	378	412
35	Yankee TRACON, CT.....	359	364	395
36	Dayton International, OH.....	351	359	389
37	Port Columbus Int'l, OH ¹	336	349	380
38	Portland TRACON, OR.....	352	345	376
39	Corpus Christi, TX.....	357	341	368
40	Raleigh-Durham Int'l, NC.....	346	336	367
41	Indianapolis Int'l, IN ¹	305	332	362
42	Pensacola TRACON, FL.....	346	332	358
43	Palm Beach International, FL.....	350	318	350
44	Honolulu International, HI.....	333	321	350
45	Austin, TX.....	319	315	342
46	Milwaukee/Gen Mitchell Int'l, WI....	315	315	342
47	Kansas City International, MO.....	307	314	341
48	Anchorage TRACON, AK ¹	297	304	326
49	Oklahoma City/Will Rogers, Ok.....	269	297	320
50	Richmond International, VA.....	274	213	318

Automated Flight Service Stations Activity

CY 99 Rank	AFSS/State	Flight Services (000's)		
		Jan-Nov 2000*	Jan-Nov 1999	Jan-Dec 1999*
1	Miami AIFSS, FL ¹	989	1,220	1,332
2	St. Petersburg, FL.....	1,081	1,078	1,166
3	Lansing, MI ¹	750	868	929
4	Fort Worth, TX.....	752	805	867
5	Seattle, WA.....	696	714	760
6	Terre Haute, IN ¹	483	705	751
7	Bridgeport, CT ¹	663	694	737
8	Columbia, MO ¹	584	680	732
9	Raleigh, NC.....	625	683	732
10	Kankakee, IL ¹	584	668	715
11	Denver, CO.....	640	651	698
12	Princeton, MN ¹	593	650	694
13	Macon, GA.....	551	645	691
14	Leesburg, VA.....	600	624	671
15	Green Bay, WI ¹	569	622	667
16	Prescott, AZ.....	678	596	645
17	San Angelo, TX.....	562	580	629
18	Anderson, SC.....	523	582	828
19	Gainesville, FL ¹	266	580	532
20	Millville, NJ.....	536	559	601
21	Williamsport, PA.....	552	555	598
22	Anniston, AL ¹	444	539	528
23	Conroe, TX.....	474	522	563
24	Oakland AIFSS, CA.....	495	516	555
25	Dayton, OH ¹	304	512	540
26	Kenai AIFSS, AK ¹	487	511	536
27	Altoona, PA.....	468	473	508
28	Mc Alester, OK.....	443	466	499
29	Albuquerque, NM.....	435	442	479
30	Nashville, TN ¹	335	440	470

* Preliminary ¹ Missing 2000 data

Source: APO-130
(202) 267-3350

Automated International Flight Service Station--AIFSS

As of: 11/30/00

Automated Flight Service Stations Activity

CY 99 Rank	AFSS/State	Flight Services (000's)		
		Jan-Nov 2000*	Jan-Nov 1999	Jan-Dec 1999*
31	Cleveland, OH ¹	397	432	463
32	Riverside, CA.....	397	431	463
33	Hawthorne, CA.....	406	425	458
34	Wichita, KS ¹	354	426	457
35	Jonesboro, AR.....	390	402	433
36	Burlington, VT ¹	350	379	405
37	Rancho Murieta, CA ¹	342	369	398
38	San Diego, CA ¹	299	355	381
39	Mc Minnville, OR ¹	320	354	379
40	Fort Dodge, IA ¹	303	350	376
41	St. Louis, MO ¹	332	345	369
42	De Ridder, LA.....	324	336	362
43	Cedar City, UT.....	335	327	353
44	Louisville, KY ¹	220	327	323
45	Bangor, ME ¹	304	325	348
46	Buffalo, NY.....	291	317	337
47	Islip AIFSS, NY.....	302	312	332
48	Columbus, NE ¹	293	299	328
49	San Juan AIFSS, PR ¹	144	292	323
50	Reno, NV.....	402	299	320
51	Grand Forks, ND.....	295	289	308
52	Greenwood, MS ¹	225	265	286
53	Huron, SD ¹	217	251	269
54	Elkins, WV.....	250	249	267
55	Great Falls, MT ¹	228	246	264
56	Jackson, TN ¹	205	242	260
57	Fairbanks, AK ¹	194	208	221
58	Honolulu, HI.....	204	197	215
59	Boise, ID.....	181	182	195
60	Casper, WY.....	175	181	193
61	Juneau, AK ¹	138	142	149

Airports

Number of U.S. Airports ¹ (As of December 31)

	2000	1999	1998
Total Airports.....	19,281	19,098	18,770
Public Use Airports.....	5,317	5,324	5,352
# with Paved Runways.....	3,953	3,949	3,970
# with Unpaved Runways.....	1,364	1,375	1,382
# with Lighted Runways.....	4,035	4,051	4,005
# with Unlighted Runways.....	1,282	1,273	1,347
Private Use Airports.....	13,964	13,774	13,418
# with Paved Runways.....	4,463	4,384	4,451
# with Unpaved Runways.....	9,501	9,390	8,967
# with Lighted Runways.....	1,010	918	840
# with Unlighted Runways.....	12,954	12,856	12,578
Public use airports abandoned.....	13	17	24
Private use airports abandoned.....	156	109	92
Certificated Airports*.....	651	655	660
Civil	563	565	566
Military	88	90	94

¹ Includes civil and joint-use civil-military airports, heliports, STOLports, and seaplane bases in the U.S. and its territories.

² Preliminary

* Certificated airports serve Air Carrier Operations with aircraft seating more than 30 passengers. (FAR Part 139).

As of: 12/31/00

Source: AAS-330
(202) 267-8752

National Airspace Total System Delays

Year	Jan	Feb	Mar	Apr	May	Jun	Jul	Aug	Sep	Oct	Nov	Dec	YTD Total
2000	26,015	27,208	32,205	35,332	36,570	50,114	44,430	47,893	43,357	43,794	34,365	28,798	450,081
1999	24,345	19,851	23,180	34,046	39,533	41,602	45,162	37,189	32,833	28,223	23,330	24,822	374,116
1998	27,623	24,855	24,159	22,563	29,187	37,093	25,672	30,549	20,194	23,988	20,439	19,912	306,234 r/
1997	21,588	15,856	15,055	17,453	19,177	25,068	26,193	24,816	19,388	17,812	22,337	20,516	245,259 r/
1996	25,082	18,955	18,598	19,303	22,200	29,776	25,544	24,203	25,422	21,452	17,294	23,678	271,507 r/

Delays of 15 minutes or longer

r/ Revised

As of: 12/31/00

Source: ATT-220
(703) 904-4470

Aircraft

U.S. Air Carrier Activity

	CY 1999	CY 1998	CY 1997
Total Number of Aircraft¹.....	19,145	18,754	17,990
Type of Carrier			
Domestic, flag, supplemental, scheduled, cargo air carriers, and commercial operators.....	7,094	6,959	6,681
Commuter Air Carriers and Air Taxis.....	12,051	11,795	11,309
Total Number of Aircraft¹.....	19,145	18,754	17,990
Type of Aircraft			
Jet.....	7,270	6,865	6,464
Turboprop.....	3,740	3,535	3,207
Piston.....	5,757	6,065	6,167
Rotary Wing.....	2,378	2,289	2,152
Air Carrier Traffic Statistics² (Millions)*			
Passenger miles flown.....	668,169	635,517	605,434
Passenger enplanements.....	635	613	599
Ton miles.....	86,800	82,304	81,057
Aircraft miles flown.....	6,161	5,838	5,679
Passenger load factor ³			
Domestic.....	68.9%	70.0%	69.1%
International.....	74.4%	72.8%	74.1%

¹ Source: Vital Information System

² Includes domestic and international scheduled service, of Certificated Route Air Carriers only.

³ Proportion of aircraft seating capacity that is sold.

As of: 12/31/99

Source: AFS-40
(202) 267-3433
*BTS (K-25)
(202) 366-8513

U.S. General Aviation and Air Taxi Activity

(Calendar Years)

	Estimated Active Aircraft (thousands)		Estimated Hours Flown (Millions)	
	1998	1997	1997	1997
Total	204.7	192.4	28.1	27.7
By Type Aircraft				
Piston.....	163.0	156.1	20.4	20.7
Turboprop.....	6.2	5.6	1.8	1.7
Jet.....	6.1	5.2	2.2	1.7
Rotary Wing.....	7.4	6.8	2.3	2.1
Other.....	5.6	4.1	0.3	0.2
Experimental.....	16.5	14.7	1.1	1.3
By Type Flying				
Public Use**.....	4.0	4.1	1.4	1.1
Corporate.....	11.3	10.4	3.2	2.9
Business.....	32.6	27.7	3.5	3.0
Personal.....	124.3	115.6	9.8	9.6
Instructional.....	11.4	14.7	4.0	5.0
Air Taxi.....	4.9	4.8	2.4	2.0
Aerial Application.....	4.6	4.9	1.3	1.6
Aerial Observation.....	3.2	3.3	0.8	1.3
Sight Seeing.....	0.7	0.7	0.2	0.1
Air Tours.....	0.3	0.2	0.2	0.1
External Load.....	0.3	0.2	0.2	0.1
Other Work Use.....	1.1	0.7	0.3	0.1
Other.....	6.0	5.3	0.9	0.8

As of: 12/31/98

Source: APO-110
(202) 493-4236

Aircraft Certification Service

Aircraft Certification Mission and Program Profiles

	FY 2000	FY 1999
Type Certificates/Supplemental Type Certificates Issued.....	1,680	1,790
Other Design Approvals Issued.....	5,975	5,960
Production Approvals (Including Amendments) Issued.....	2,770	2,720
Airworthiness Certificates Issued.....	2,850	2,820
New Airworthiness Directives (AD) Issued.....	510	474
New Designees (Representative of the Administrator) Appointed.....	959	1,195
Total Active Designees.....	4,384	4,594

As of: 9/30/00

Source: AIR-503
(202) 267-7260

Active Pilots and Nonpilots (As of 31 December)

	1999		1998	
	Total	Women	Total	Women
Pilot-Total	635,472	35,762	618,298	35,762
Student.....	97,359	11,191	97,736	11,289
Private.....	258,749	15,171	247,226	14,152
Commercial.....	124,261	5,720	122,053	5,366
Airline Transport.....	137,642	4,126	134,612	3,848
Other ¹	17,461	1,165	16,671	1,107
Nonpilot-Total²	549,588	15,380	549,588	15,380
Mechanic.....	340,402	4,722	336,670	4,483
Repair Men/Women.....	35,989	1,582	52,909	1,940
Ground Instructor.....	10,447	5,016	70,334	4,904
Flight Engineer.....	63,591	1,841	63,700	1,841
Other ³	25,975	2,389	25,975	2,212
Flight Instructor	79,171	5,028	79,171	4,926

¹ Includes helicopter (only) & glider (only), and recreational pilot certificates.

² Excludes non-pilots 70 years old or over in all certificate types except flight engineers and flight navigators.

³ Includes flight navigators, parachute riggers, and dispatchers.

As of 12/31/99

Source: APO-110
(202) 267-3352

Industry Trends

Scheduled U.S. Air Carrier Traffic and Financial Trends

	FY 2000	FY 1999	Numerical Change	Percent Change
TRAFFIC				
ASM'S (in millions)				
Majors.....	888,387	852,794	35,593	4.2
Nationals.....	58,290	52,493	5,797	11.0
Regionals.....	1,054	2,564	(1,510)	(58.9)
Totals.....	947,731	907,851	39,880	4.4
RPM's (in millions)				
Majors.....	644,813	607,373	37,440	6.2
Nationals.....	38,732	34,434	4,298	12.5
Regionals.....	526	1,199	(673)	(56.1)
Totals.....	684,071	643,006	41,065	6.4
Load Factor (in percent)				
Majors.....	72.6	71.2	1.4	
Nationals.....	66.4	65.6	0.8	
Regionals.....	49.9	46.8	3.1	
Totals.....	71.1	69.8	1.3	
FINANCIAL				
Revenues (in millions)				
Majors.....	\$114,970	\$105,499	\$9,471	9.0
Nationals.....	11,571	10,821	750	6.9
Regionals.....	701	723	(22)	(3.0)
Totals.....	\$127,242	\$117,043	10,199	8.7
Expenses (in millions)				
Majors.....	\$107,948	\$97,744	\$10,204	10.4
Nationals.....	11,043	9,932	1,111	11.2
Regionals.....	708	727	(19)	(2.6)
Totals.....	\$119,699	\$108,403	11,296	10.4
Operating Profit/Loss (in millions)				
Majors.....	\$7,022	\$7,755	(\$733)	
Nationals.....	528	889	(361)	
Regionals.....	(7)	(4)	(3)	
Totals.....	\$7,543	\$8,641	(\$1,098)	

Source: APO-110
(202) 493-4236

As of: 1/30/01

U.S. Commercial Space Transportation Financial Trends

	CY 99	CY 00	CY 01 (Projected)
Commercial Launch Revenues (in Millions)	\$851	\$625	\$600

As of: 1/19/01

Source: AST-200
(202) 267-8308

Aviation Forecasts

Actual Forecast
FY 1999 FY 2003

FAA FACILITY WORKLOAD

Aircraft Handled by FAA ARTCC's (Millions)	44.7	49.0
Air Carrier.....	24.0	26.9
Air Taxi/Commuter.....	7.7	8.5
General Aviation.....	8.8	9.6
Military.....	4.1	4.1
Operations Logged by FAA Towers (Millions)		
Airport.....	68.2	73.9
Instrument.....	51.8	56.5
Flight Services Logged by Flight Services Stations (Millions)	32.4	32.2

CIVIL AVIATION ACTIVITY

Certificated Route Air Carrier

Revenue Passenger Enplanements (Millions)....	629.4	713.3
Revenue Passenger Miles (Billions).....	642.8	756.8

Air Carrier Aircraft..... 5,668 6,856

General Aviation Estimated

Hours Flown (Millions)*.....	29.8	32.7
Active Aircraft (Thousands)*.....	206.5	215.1

ESTIMATED FUEL CONSUMED BY U.S. DOMESTIC

CIVIL AVIATION (Millions of Gallons)

Jet Fuel

Air Carrier.....	19,429	22,287
General Aviation.....	888	1,191

Aviation Gas

Air Carrier.....	2	2
General Aviation.....	313	331

Active Pilots (Thousands)*..... 640.1 702.8

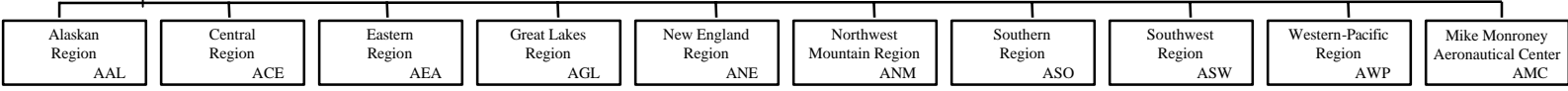
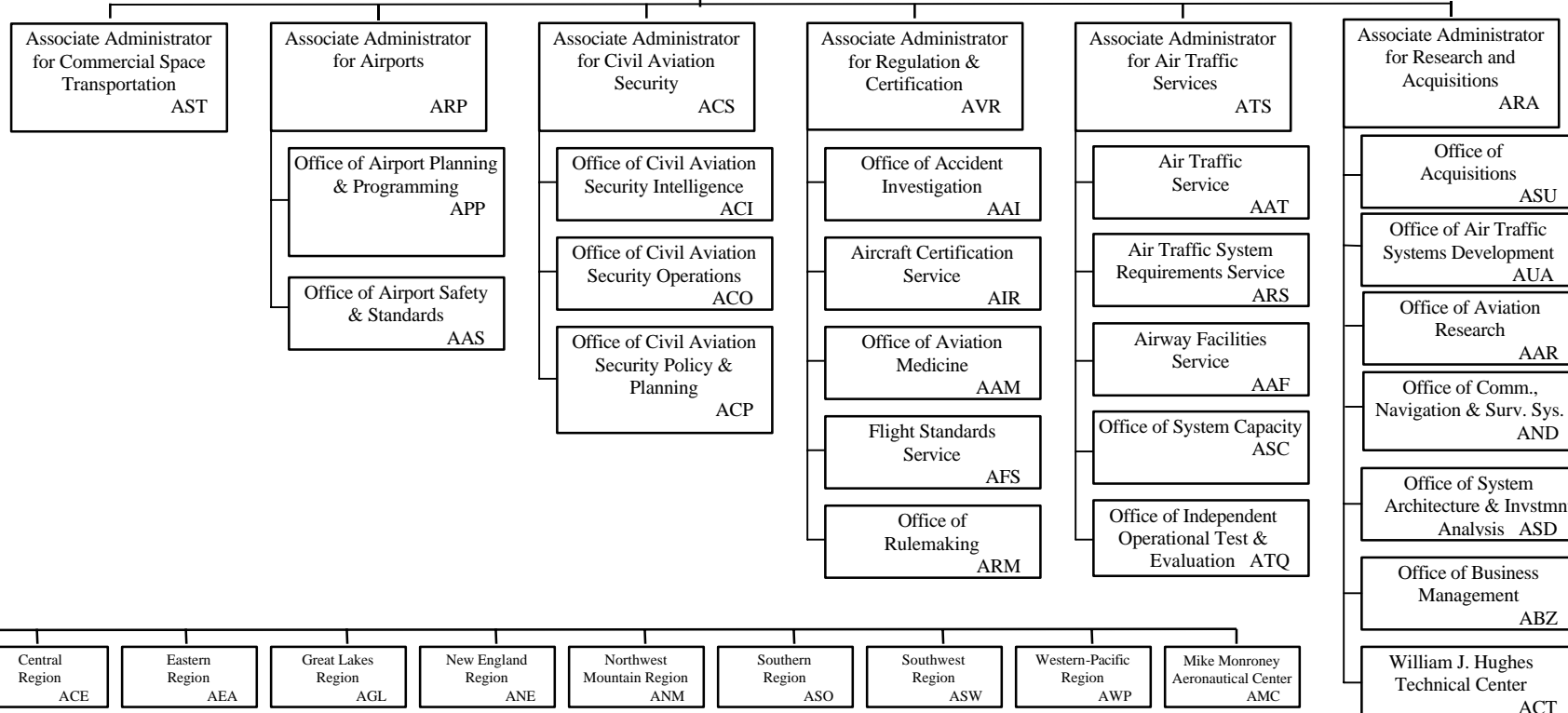
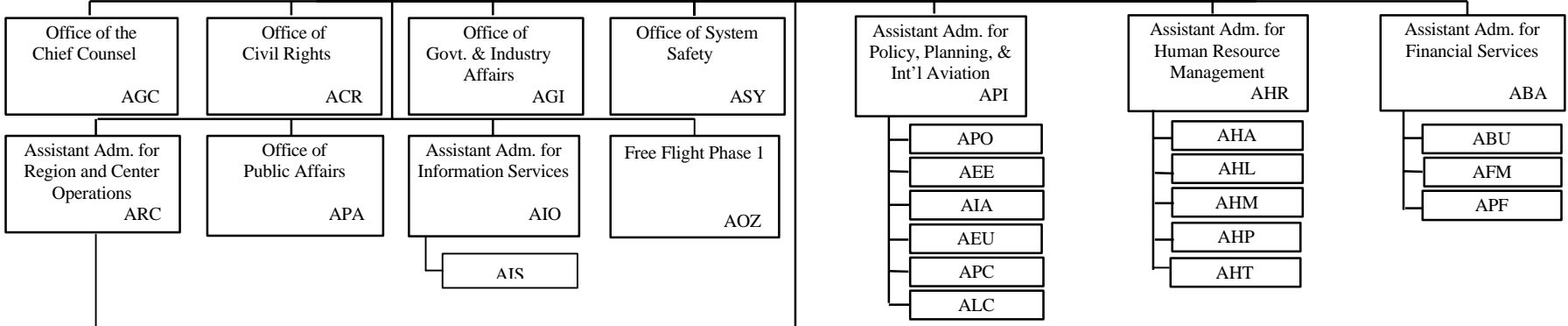
*Calendar Year
As of: 3/2000

Source: APO-110
(202) 493-4236

FEDERAL AVIATION ADMINISTRATION

Administrator
AOA

Deputy Administrator
ADA



The Associate Administrator for Commercial Space Transportation

Since its establishment in 1984, the primary responsibilities of the Associate Administrator for Commercial Space Transportation (AST) have been to regulate the US commercial space transportation industry and license commercial launches to protect public health and safety, safety of property, national security, and foreign policy interests of the US. The Office is also responsible for encouraging, facilitating and promoting commercial launches by the private sector and for regulating non-federal or commercial space launch sites.

Licenses to conduct commercial launches are granted to commercial launch providers who demonstrate evidence of compliance with all safety regulations and other requirements for conducting commercial space launch activities. Licensees must also have sufficient insurance or financial resources to cover any probable losses from a launch mishap.

Licensed commercial launches are currently conducted at federal launch sites including Cape Canaveral Air Station, Florida; Vandenberg Air Force Base, California; Wallops Flight Facility, Wallops Island, Virginia; and White Sands Missile Range, New Mexico. Four non-federal or commercial sites are now licensed and operational to allow licensed commercial launches and other launch operations. They are the California Spaceport, located at Vandenberg Air Force Base; Spaceport Florida Authority, located at Cape Canaveral; the Virginia Space Flight Center, located on Wallops Island, Virginia; and the Kodiak Launch Complex, located on Kodiak Island, Alaska. The state of New Mexico has a proposal for the development of the Southwest Regional Spaceport in south central New Mexico.

AST Programs and Initiatives

Regulatory and Safety Program

- Licensing, Rulemaking, Insurance Determinations/Risk Assessment, Environmental Compliance, Standards, Compliance Monitoring, Enforcement, Safety Research, Reentry Spacecraft and Operations.

Other Programs and Initiatives

- Launch Technology Development, Customer Service, Industry and Market Analysis, Federal Space Policy Development, International Launch Trade Policy, Community and Educational Outreach

Research Areas

- Flight Safety, Launch Sites, Payload Safety, Standards, GPS, Environmental Issues, Space Safety including Orbital Debris.

World Wide Web Address:

<http://AST.faa.gov/>

U.S. Commercial Space Transportation Activity and AST Licensing

	FY 1999	FY 2000	FY 2001 (Proj.)
Licensed Commercial Launches			
TOTAL	18	12	16
Number of Orbital Launches	18	12	15
Number of Sub-Orbital Launches	0	0	1
By Launch Vehicle Type			
Delta Family (Boeing Company)	7	2	3
Atlas Family (Lockheed Martin)	5	4	3
Pegasus (Orbital Sciences Corp.)	2	2	2
Athena 1&2 (Lockheed Martin)	3	0	1
Iaurus (Orbital Sciences Corp.)	0	1	1
Zenit (KB Yuzhnoye, Ukraine)	1	3	3
Other	1	0	3
By Payload Type			
GEO ¹ Communications Satellites	8	8	9
LEO ² Communications Satellites	5	2	0
Scientific Satellites	3	1	1
Remote Sensing Satellites	3	0	3
Microgravity or Sub-orbital Payloads	0	0	1
Mass Simulator / Testing	1	1	2
By Launch Site (Federal)			
Cape Canaveral Air Station, FL	13	6	6
Vandenberg AFB, CA	4	1	3
Wallops Flight Facility, VA	0	1	0
White Sands Missile Range, NM	0	0	0
Kwajalein Missile Range	1	0	1
By Launch Site (Non-Federal)			
California Spaceport	0	0	0
Spaceport Florida Authority	0	0	0
Virginia Space Flight Center	0	0	0
Pacific Ocean Platform	1	3	3
Kodiak Launch Complex, AK	0	0	1
International Site	0	0	2
Number of Licenses			
New	3	6	8
Renewal	4	1	4
Amendments	18	5	3

¹ GEO: Geosynchronous Earth orbit-approx. 22,300 miles above the equator.

² LEO: Low Earth Orbit- from 100-1000 nautical miles.

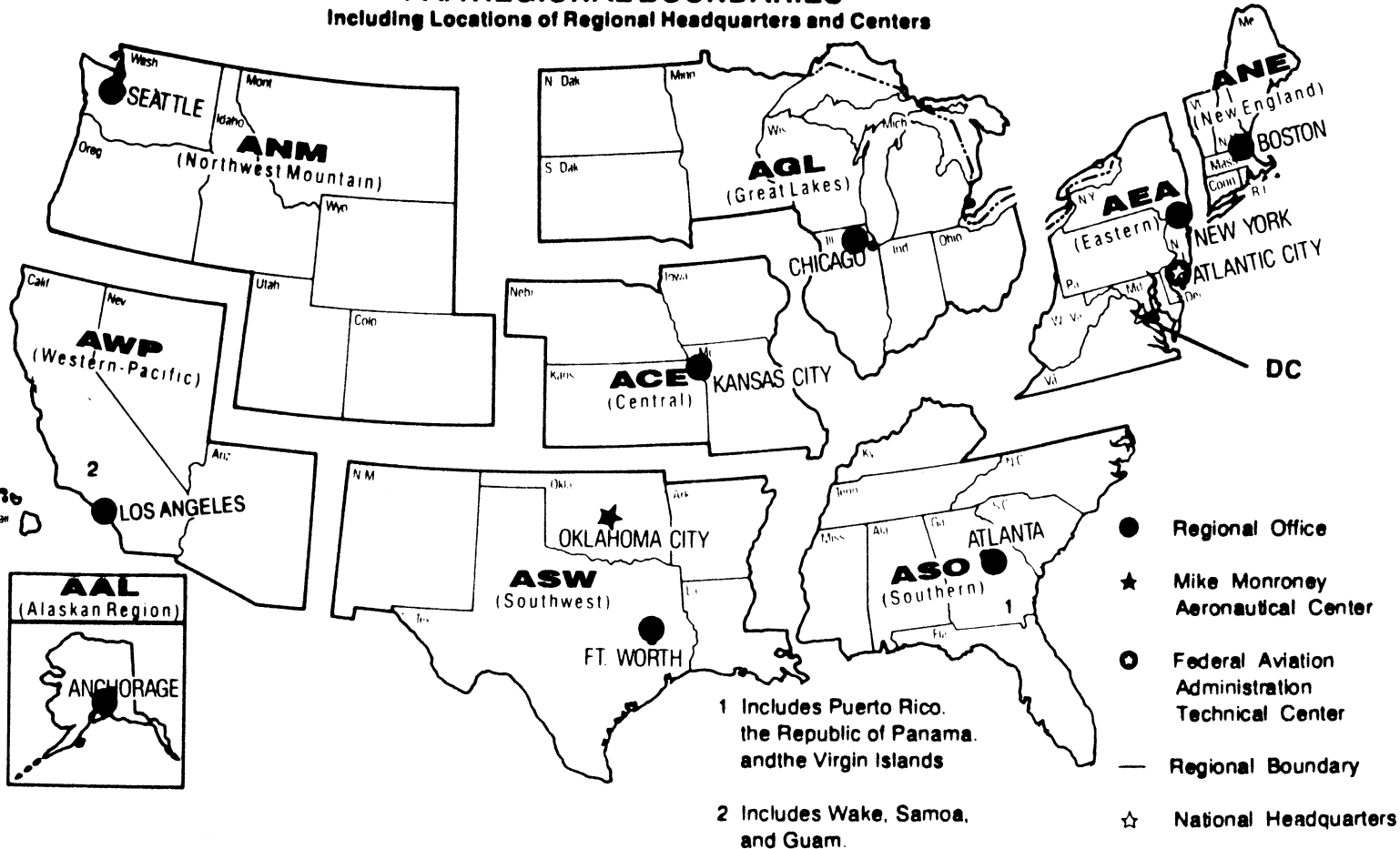
United States Commercial Space Launch Schedule, CY 2001

Payload (Country)/ Description	Launch Company/ Vehicle	Launch Date/ Launch Site	Status
<i>XM-1 (Int'l)</i> Comm. Satellite	Sea Launch Zenit-3SL	February 28, 2001 Pacific Ocean Platform	
<i>IOS (US)</i> Scientific Payload	InterOrbital Systems Tachyon	March 2001 Pacific Ocean Platform	
<i>XM-1 (International)</i> Comm. Satellite	Sea Launch Zenit-3SL	April 2001 Pacific Ocean Platform	
<i>Orbview 4 (US)</i> Remote Sensing Satellite	Orbital Sciences Corp. Taurus	May 30, 2001 Vandenberg AFB, CA	
<i>Galaxy III C (US)</i> Comm. Satellite	Sea Launch Zenit 3SL	May 2001 Pacific Ocean Platform	
<i>DIRECTV-5 (US)</i> Comm. Satellite	Lockheed Martin Atlas IIAS	May 2001 Cape Canaveral, FL	
<i>Orbview 3 (US)</i> Remote Sensing Satellite	Orbital Sciences Corp. Pegasus XL	June 2001 Vandenberg AFB, CA	
<i>HyShot (Int'l)</i> Technology Testing	Astrotech Space Terrier-Orion	June 2001 Woomera, Australia	
<i>HyShot (Int'l)</i> Technology Testing	Astrotech Space Terrier-Orion	June 2001 Woomera, Australia	
<i>Demonstration Satellite (US)</i>	The Boeing Company Delta 4	November 2001 Cape Canaveral, FL	
<i>Earthwatch (US)</i> Remote Sensing Satellite	Lockheed Martin Athena 2	November 2001 Kodiak Launch Complex, AK	
<i>ORBCOMM-5 (US)</i> LEO Comm Satellite	Orbital Sciences Corp. Pegasus	December 2001 Kwajalein Missile Range	

As of 1/19/01

Source: AST-200
(202) 267-8308

**U.S. DEPARTMENT OF TRANSPORTATION
Federal Aviation Administration
FAA REGIONAL BOUNDARIES**
Including Locations of Regional Headquarters and Centers



Major Work Force Employment

	Employment ¹				
	FY99	FY 00	FY01 Dec 00	% Change	Actual Change
Air Traffic Controller Work Force	17,639	17,547	17,549	0.0%	2
ATCS ² (bargaining unit employees)	14,902	14,904	14,939	0.2%	35
Traffic Management Supervisor (TMC)/ Supervisory TMC ²	770	746	762	2.1%	16
Operations Supervisors ²	1,967	1,897	1,848	-2.6%	-49
Flight Service Stations	3,017	2,976	2,964	-0.4%	-12
Field Maintenance (210-211 only)	8,070	7,830	7,830	-3.0%	0
Security Work Force (Airport Security New Hires)	1,136	1,136	1,136	0.0%	0
Airports Work Force	480	440	440	-8.3%	0
Research & Acquisition Work Force ³	1,991	1,945	1,945	-2.3%	0
Aircraft Certification	980	992	992	1.2%	0
Flight Standards Work Force	4,357	4,206	4,206	-3.5%	0

¹ Full time permanent appointments (operations direct).

² Included in Air Traffic Controller Work Force Total.

³ Includes direct operations, F&E, and R,E&D.

Source: APF-100
(202) 267-9946

As of: 9/30/00

FAA Resources

FAA Employment (Permanent Employees)¹

	FY 99	FY 00
<hr/>		
Line of Business		
Air Traffic Services (ATS).....	35,732	35,425
Regulation and Certification (AVR).....	6,030	5,864
Civil Aviation Security (ACS).....	1,156	1,153
Airports (ARP).....	490	446
Research and Acquisitions (ARA).....	1,902	1,898
Comm. Space Transportation (AST)....	30	25
Staff Offices.....	3,728	3,652
Total.....	49,068	48,463
<hr/>		
Region/Center/Headquarters (included in above total)		
Aeronautical Center.....	1,605	1,566
Alaskan.....	1,424	1,358
Central.....	2,506	2,511
Eastern.....	5,420	5,326
Great Lakes.....	6,620	6,515
New England.....	1,937	1,923
Northwest Mountain.....	4,237	4,175
Southern.....	7,777	7,718
Southwest.....	5,387	5,340
Western-Pacific.....	5,653	5,562
Washington Headquarters (only) ²	3,665	3,672
Washington Headquarters Field ³	1,851	1,825
Technical Center.....	986	972

¹ Full time permanent and part time permanent employees only.

² Washington Headquarters employees physically located in FOB-10A and surrounding areas (i.e. Portals, Market Square, etc.).

³ Washington Headquarters employees physically located in the Field (i.e. Technical Center, Aeronautical Center, etc.)

Source: APF-100

As of: 9/30/00

(202) 267-9946

FAA Percent Minority & Female Employment¹

Lines of Business/Region/Center/Headquarters	% Minority		%Female	
	FY 99	FY 00	FY 99	FY 00
AirTraffic Services (ATS).....	16.20	16.38	18.74	18.73
Regulation and Certification (AVR).....	17.18	17.38	28.73	28.66
Civil Aviation Security (ACS).....	27.59	27.90	42.47	41.94
Airports (ARP).....	24.48	24.66	39.79	38.12
Research and Acquisitions (ARA).....	27.28	27.44	38.06	37.78
Commercial Space Transportation (AST).....	36.66	32.00	23.33	20.00
Staff Offices.....	31.44	31.89	52.80	53.38
Total.....	18.27	18.45	24.08	24.02
Aeronautical Center.....	23.73	23.82	41.43	42.27
Alaskan.....	14.18	13.99	26.05	25.62
Central.....	13.40	13.82	24.66	24.77
Eastern.....	14.74	15.04	19.05	19.00
Great Lakes.....	10.87	10.68	20.25	20.28
New England.....	8.05	7.59	21.21	21.27
Northwest Mountain.....	11.70	11.78	22.42	22.22
Southern.....	19.72	19.87	20.23	19.87
Southwest.....	19.82	20.22	20.62	20.47
Western-Pacific.....	27.79	28.39	20.78	20.66
Washington Headquarters (only) ²	32.85	33.13	46.27	46.31
Washington Headquarters Field ³	15.77	15.73	29.55	30.19
Technical Center.....	20.99	20.66	32.96	31.79

¹ Full-time permanent, and part-time permanent employees only (FTE 1111 & 1132).

² Washington Headquarters employees physically located in FOB-10A and surrounding areas (i.e. Portals, Market Square, etc.).

³ Washington Headquarters employees physically located in the Field (i.e. Technical Center, Aeronautical Center, etc.).

Labor Relations

	BARGAINING UNITS	LABOR AGREEMENTS	EMPLOYEES REPRESENTED
Unions.....	49	17	37,986
AFGE.....	13	5	1,400
AFSCME (HQ).....	5	0	2,200
LIUNA.....	1	1	150
NAATS.....	1	1	2,400
NAGE.....	3	1	400
NATCA (AT).....	3	1	15,700
NATCA (AF).....	5	1	1,400
NATCA (HQ).....	6	0	1,511
NFFE.....	2	2	1,000
NUDAI.....	1	0	25
PAACE.....	3	2	400
PASS (AF/AEA).....	1	1	7,500
PASS (AVN).....	1	1	250
PASS (AFS).....	3	1	3,500
PASS (AIR).....	1	0	150

AFGE --American Federation of Government Employees
 AFSCME --American Federation of State, County, and Municipal Employees
 LIUNA --Laborer's International Union of North America
 NAATS --National Association of Air Traffic Specialists
 NAGE --National Association of Government Employees
 NACTA --National Air Traffic Controllers Association
 NFFE --National Federation of Federal Employees
 NUDAI --National Union of Drug Abatement Inspectors
 PAACE --Professional Association of Aeronautical Center Employees
 PASS --Professional Airway System Specialists

Source: AHL-200
(202) 267-3375

As of: 10/12/00

FAA Finances

(In Millions of Dollars)

	FY 1999	FY 2000	FY 2001
	Actual	Est.	Est.
Budget Authority			
Grants-In-Aid (Obligation Limitation).....	1,950	1,846 ^{1/}	1,950
Research, Engineering, & Development.....	150	156	184
Facilities and Equipment.....	2,121	2,045 ^{2/}	2,495
Operations.....	5,586	5,893	6,592
Total.....	9,807	9,940	11,221
Obligations Incurred--Operations			
Appropriation by Budget Activity			
Air Traffic Services.....	4,351	4,657	5,210
Regulation and Certification.....	619	644	692
Civil Aviation Security.....	120	131	144
Airports.....	48	0	0
Research and Acquisitions.....	78	176	197
Commercial Space Transportation.....	6	7	13
Administration.....	264	0	0
Regional Coordination.....	0	95	0
Human Resources.....	0	53	0
Financial Services.....	0	39	0
Staff Offices.....	84	76	336 ^{3/}
Essential Air Service.....	0	32	0
Total.....	5,570 #	5,912	6,592
Airport Grant Obligations (NET)			
Primary Airports & Cargo.....	514	612	613
States/Territories/Insular/Alaska Supp.....	356	353	360
Entitlements.....	0	136	136
Discretionary Fund.....	1,080	750	781
Total.....	1,950	1,851	1,890
Total FAA Outlays.....	9,507	9,748	10,558
Trust Fund Receipts from Excise Taxes			
Passenger Ticket Tax.....	5,941	4,850	4,911
Passenger Flight Segment Tax.....	1,339	1,594	1,809
Waybill Tax.....	412	443	479
Fuel Tax.....	1,009	854	878
International Departure/Arrival Tax.....	1,484 #	1,286	1,367
Rural Airports Tax.....	57	54	57
Frequent Flyer Tax.....	149	141	144
Aviat. User Fees, Legislative proposal	0	0	965
Interest on Investment.....	698	762	800
Offsetting Collections.....	32	165	167
Total.....	11,121	10,149	11,577

Numbers may not add due to rounding.

1/ Includes 2000 supplemental request.

2/ Reflects \$30 million rescission.

3/ The budget reflects the consolidation of Region/Center

Operations, Human Resources, and Financial Services into Staff Offices in FY 2001

Source: ABU-100
(202) 267-9070

FAA NAS Operational Facilities and FAA Aircraft (As of December 31)

	2000	1999	1998
NAS Operational Facilities¹	40,921	40,360	38,209
Communications.....	14,103	13,901	13,437
Automation.....	3,889	3,802	3,157
Environment.....	6,620	6,391	5,872
Navigation.....	11,211	11,265	11,164
Surveillance.....	1,794	1,764	1,660
Weather.....	3,304	3,237	2,919
Air Traffic Control Facilities²			
Air Route Traffic Control Center.....	21	21	21
Airport Traffic Control Tower.....	496	492	467
Flight Service Stations.....	75	77	76
Automated Flight Service Stations	61	61	61
FAA Aircraft*	50	49	48

¹ Excludes non-federal facilities and foreign facilities.

² Included in NAS operational facilities.

Source: AOP-200
(202) 267-5928
ASW-280*
(405) 954-6231

As of: 12/31/00

FAA Officials

Washington Headquarters

Routing Symbol	Officials
AOA	Administrator Jane F. Garvey, 267-3111 Carl Burleson, Chief of Staff, 267-3111
ADA	Deputy Administrator Monte R. Belger (Actg.), 267-8111 Shirley S. Miller (Actg.), Executive Assistant, 267-8111
AOZ	<i>Free Flight Phase 1</i> <i>Director, Charles E. Keegan, 220-3300</i>
AIO	Assistant Administrator for Information Services Daniel J. Mehan, CIO, 493-4570 Deputy, Arthur Pyster, 493-4570
AIS*	<i>Office of Information Systems</i> <i>Director, Tom O'Keefe (Actg.), 267-7104</i>
ASY	Assistant Administrator for System Safety Christopher A. Hart, 267-3611 Deputy, Daniel C. Hedges, 267-3611
AGC	Chief Counsel Thomasenia Duncan (Designee), 267-3222 Deputy, James Whitlow, 267-3773
ACR	Assistant Administrator for Civil Rights Fanny Rivera, 267-3254 Deputy, Barbara A. Edwards, 267-3264
AGI*	Asst. Administrator for Government & Industry Affairs Quentin Burgess (Actg.), 267-3277 Deputy, Vacant, 267-8211
APA*	Assistant Administrator for Public Affairs Laura Brown (Actg.), 267-3883 Deputy, Laura Brown, 267-3883
API	Asst. Administrator for Policy, Planning, and Intl. Aviat. Louise E. Maillett (Actg.), 267-3033 Deputy, Lynne Osmus (Actg.), 267-3927
APO	<i>Office of Aviation Policy and Plans</i> <i>Director, John M. Rodgers, 267-3274</i>
AEE	<i>Office of Environment and Energy</i> <i>Director, James D. Erickson, 267-3576</i>
AIA	<i>Office of International Aviation</i> <i>Director, Eugene Ross Hamory, 267-8112</i>
ARC	Assistant Administrator for Region/Center Operations Ruth Leverenz, 817-222-5001 / 202-267-7369

FAA Officials

Washington Headquarters--(Cont)

Routing Symbol	Officials
ABA	Assistant Administrator for Financial Services Donna R. McLean, CFO, 267-9105 Deputy, John F. Hennigan, 267-8928
ABU	<i>Office of Budget</i> Director, J. Brian Riley, 267-8010
AFM	<i>Office of Financial Management</i> Director, Patrick J. Heidenthal (Actg.), 267-7112
APF	<i>Office of Performance Management</i> Director, Tim Lawler (Actg.), 267-7140
AHR	Assistant Administrator for Human Resource Management Glenda Tate, 267-3456 Deputy, Mary Ellen Dix, 267-3850
AHP	<i>Office of Personnel</i> Director, Roger M. Edwards, 267-3850
AHL*	<i>Office of Labor & Employee Relations</i> Director, Melvin Harris, 267-3979
AHD	<i>Office of Organization, Learning & Development</i> Director, Paul Longenbach, 267-9041
AHM	<i>Center for Management Development</i> Director, Woodie Woodward, 904-446-7136
AHA	<i>Office of the Accountability Board</i> Director, Barbara J. Smith, 267-8015
AST	Assoc. Adm. for Commercial Space Transportation Patricia Grace Smith, 267-7793 Deputy, Joseph A. Hawkins, 267-7848
ARP	Associate Administrator for Airports Woodie Woodward (Actg.), 267-9471 Deputy, Paul L. Galis, 267-8738
APP	<i>Office of Airport Planning & Programming</i> Director, Catherine M. Lang, 267-8775
AAS	<i>Office of Airport Safety and Standards</i> Director, David L. Bennett, 267-3053
ACS*	Associate Administrator for Civil Aviation Security Michael A. Canavan, 267-9863 Deputy, William S. Davis, 267-3969
ACI	<i>Office of Civil Aviation Security Intelligence</i> Director, Patrick T. McDonnell, 267-9075
ACO	<i>Office of Civil Aviation Security Operations</i> Director, Lee Longmire, 267-8537
ACP	<i>Office of Civil Aviation Security Policy and Planning</i> Director, Jan Brecht-Clark, 267-8058

FAA Officials

Washington Headquarters--(Cont.)

Routing Symbol	Officials
AVR	Associate Administrator for Regulation & Certification Thomas E. McSweeney, 267-3131 Deputy, Peggy Gilligan, 267-7804
AAI	<i>Office of Accident Investigation</i> Director, Steven B. Wallace, 267-9612
AIR	<i>Aircraft Certification Service</i> Director, Elizabeth Erickson, 267-8235
AAM	<i>Office of Aviation Medicine</i> Director, Jon L. Jordon, MD, 267-3535
AFS	<i>Flight Standards Service</i> Director, L. Nicholas Lacey, 267-8237
ARM	<i>Office of Rulemaking</i> Director, Anthony F. Fazio, 267-9677
ATS	Associate Administrator for Air Traffic Services Steven J. Brown (Actg.), 267-7111 Deputy, Peter H. Challan, 267-3133
AAT*	<i>Air Traffic Service</i> Director, Bill G. Peacock (Actg.), 267-3666
AAF	<i>Airway Facilities Service</i> Director, Alan Moore, 267-8181
ASC	<i>Office of System Capacity and Requirements</i> Director, Paula R. Lewis, 267-7370
AIQ	<i>Independent Operational Test and Evaluation</i> Director, A. Martin Phillips, 267-3341
ARS	<i>Air Traffic System Requirements Service</i> Director, James H. Washington, 493-0248
ARA	Associate Administrator for Research and Acquisitions Steven Zaidman, 267-7222 Deputy, Dennis DeGaetano, 267-7222
ASU	<i>Office of Acquisitions</i> Director, Gilbert B. Devey, 267-8513
AUA	<i>Office of Air Traffic Systems Development</i> Director, William Voss, 493-0237
AAK	<i>Office of Aviation Research</i> Director, Herman Rediess, Ph.D., 358-5236
AND	<i>Office of Communications, Navigation, & Surveillance Sys.</i> Director, Carl McCullough, 267-3555
ASD	<i>Office of System Architecture and Investment Analysis</i> Director, John A. Scardina, 358-5238
ABZ	<i>Office of Business Management</i> Director, Lauraline Gregory, 267-3616

Duty Officer

(202) 267-3333

FAA Officials

Major Field Organizations

Routing Symbol	Officials
AAL	Alaskan Region, Regional Administrator Patrick N. Poe, 907-271-5645 222 West 7th Avenue, Box 14 Anchorage, Alaska 99513-7587 Duty Officer, 907-271-5936
ACE	Central Region, Regional Administrator John E. Turner, 816-329-3050 901 Locust Kansas City, Missouri 64106 Duty Officer, 816-329-3000
ACT	William J. Hughes Technical Center, Director Anne Harlan, 609-485-6641 Atlantic City International Airport New Jersey 08405 Duty Officer, 609-485-6482
AEA	Eastern Region, Regional Administrator Arlene B. Feldman, 718-553-3000 1 Aviation Plaza 159-30 Rockaway Blvd. Jamaica, New York 11434-4809 Duty Officer, 718-553-3100
AGL	Great Lakes Region, Regional Administrator Cecelia Hunziker, 847-294-7294 2300 East Devon Avenue Des Plaines, Illinois 60018 Duty Officer, 847-294-8400
AMC	Mike Monroney Aeronautical Center, Director Lindy Ritz, 405-954-4521 6500 South MacArthur Oklahoma City, Oklahoma 73125 Duty Officer, 405-954-3583

FAA Officials

Major Field Organizations--(Cont.)

Routing Symbol	Officials
ANE	New England Region, Regional Administrator Robert S. Bartanowicz, 781-238-7020 12 New England Executive Park Burlington, Massachusetts 01803 Duty Officer, 781-238-7001
ANM	Northwest Mountain Region, Regional Administrator Larry Andriesen, 425-227-2001 1601 Lind Avenue, S.W. Renton, Washington 98055-4056 Duty Officer, 425-227-2000
ASO	Southern Region, Regional Administrator Carolyn Blum, 404-305-5000 1701 Columbia Avenue College Park, Georgia 30337 Duty Officer, 404-305-5180
ASW	Southwest Region, Regional Administrator Ruth Leverenz, 817-222-5001 2601 Meacham Blvd. Ft. Worth, Texas 76137-4298 Duty Officer, 817-222-5006
AWP	Western-Pacific Region, Regional Administrator William C. Withycombe, 310-725-3550 15000 Aviation Boulevard Hawthorne, California 90261 Duty Officer, 310-725-3300

FAA Officials

International Area Offices

Routing Symbol	Officials
AEU	Europe, Africa, & Middle East Area Office, Director Paul Feldman (Actg.), 011.32.2.508.2700 American Embassy, Brussels PSC 82 Box 002 APO AE 09724-1011
ALC	Latin America & Caribbean Area Office, Director Joaquin Archilla, 305-716-3300 8600 NW 36th Street Miami, FL 33166
APC	Asia-Pacific Area Office, Director David L. Knudson (Actg.), 011.65.543.1466 American Embassy 27 Napier Road Singapore 258508

FAA STRATEGIC PLAN

SAFETY

GOAL: *By 2007, reduce U.S. aviation fatal accident rates by 80% from 1996 levels.*

Outcome Measures:

Fatal Aircraft Accident Rate: By 2007, reduce the U.S. aviation fatal accident rate per aircraft departure, as measured by a three-year moving average, by 80 percent from the three-year average of 1994-96.

Overall Aircraft Accident Rate: Reduce the rate per aircraft departure.

Fatalities and Losses by Type of Accident: Reduce the number and type of fatalities and losses from accidents that occur for each major type of accident.

Occupant Risk: Reduce the risk of mortality to a passenger or flight crew member on a typical flight.

Strategic Focus Areas:

Regulatory Reform: Implement a regulatory process that is timely, responsive, and consistently applied.

Safety information Sharing and Analysis: Develop partnerships with the aviation community to share data and information supporting safe, secure aviation.

Surveillance/Inspection: Develop new approaches to working with others on inspection and surveillance and targeting FAA resources where they will do the most good.

Accident Prevention: Based on detailed root cause analysis, prevent accidents before they happen through appropriate, targeted, systematic interventions in the aviation system.

As of 3/31/99

Source: APO-120
(202) 267-3220

Security

GOAL: *Prevent security incidents in the aviation system.*

Outcome Measures:

Explosive Device and Weapons Detection: Increase ability to detect improvised explosive devices (through use of simulants) and weapons with no significant increase in operational impact - in checked and carry-on baggage and on the person.

Compliance with Security Requirements: Increase as measured by compliance audits.

Risk and Vulnerability at Airports and Airway Facilities: Reduce as measured by risk assessments.

Strategic Focus Areas:

New Security Baseline: Continue to improve the baseline security system for civil aviation.

Performance and Procedures: Maximize the performance capability of people working in security for air carriers and airport operators and at FAA facilities.

Information Security Architecture: Develop a systematic information security architecture that describes the future NAS information security system FAA will build toward.

SYSTEM EFFICIENCY

GOAL: *Provide an aerospace transportation system that meets the needs of users and is efficient in the application of FAA and aerospace resources.*

Outcome Measures:

System Flexibility: Reduce total number of published ATC preferential routes by 7%.

User Access: Reduce the average call waiting times for Automated Flight Service Stations (AFSS) by 20%.

System Delays: Reduce the rates of volume and equipment related delays by 20%.

Strategic Focus Areas:

NAS Modernization: Using the NAS Architecture as the guideline, continually refine and update the NAS to achieve efficient aerospace systems and operations.

Free Flight: Within safety consideration, work toward giving aircraft the opportunity to fly in the way that gives them the most benefit as they define it.

Systems Integration: Integrate airport and commercial space requirements into NAS planning and architecture.

ENABLING GOALS:

People: The Foundation of Accomplishment

Provide a model work environment supporting the productive, diverse, and highly skilled workforce needed to carry out the FAA mission into the twenty-first century. To accomplish this, FAA will focus on:

Intellectual Capital

Managing the Diverse Work Force

Quality of Work Life

Reform: The Framework for Accomplishment

Fundamentally change the way the FAA operates by implementing personnel and acquisition reform and pursuing financial reform. FAA will focus on:

Acquisition Reform

Personnel Reform

Financial Reform

The Environment: Our Responsibility

Address what may represent the single greatest challenge to the continued growth and prosperity of civil aerospace as we enter the twenty first century, focusing on:

Understanding Aerospace Environmental Impacts

Reducing Aerospace Environmental Impacts of FAA Activities

Quantify and Mitigate Environmental Impacts of FAA Activities

Global Leadership: Commitment to Worldwide Improvements

Improve safety, security and system efficiency globally through:

International Safety Oversight

Global Safety Action Plan

Global CNS/ATM Development and Implementation

International Regulatory Harmonization

2001

January

	1	2	3	4	5	6
7	8	9	10	11	12	13
14	15	16	17	18	19	20
21	22	23	24	25	26	27
28	29	30	31			

March

				1	2	3
4	5	6	7	8	9	10
11	12	13	14	15	16	17
18	19	20	21	22	23	24
25	26	27	28	29	30	31

May

		1	2	3	4	5
6	7	8	9	10	11	12
13	14	15	16	17	18	19
20	21	22	23	24	25	26
27	28	29	30	31		

July

1	2	3	4	5	6	7
8	9	10	11	12	13	14
15	16	17	18	19	20	21
22	23	24	25	26	27	28
29	30	31				

September

						1
2	3	4	5	6	7	8
9	10	11	12	13	14	15
16	17	18	19	20	21	22
23	24	25	26	27	28	29
30						

November

				1	2	3
4	5	6	7	8	9	10
11	12	13	14	15	16	17
18	19	20	21	22	23	24
25	26	27	28	29	30	

February

				1	2	3
4	5	6	7	8	9	10
11	12	13	14	15	16	17
18	19	20	21	22	23	24
25	26	27	28			

April

1	2	3	4	5	6	7
8	9	10	11	12	13	14
15	16	17	18	19	20	21
22	23	24	25	26	27	28
29	30					

June

					1	2
3	4	5	6	7	8	9
10	11	12	13	14	15	16
17	18	19	20	21	22	23
24	25	26	27	28	29	30

August

			1	2	3	4
5	6	7	8	9	10	11
12	13	14	15	16	17	18
19	20	21	22	23	24	25
26	27	28	29	30	31	

October

	1	2	3	4	5	6
7	8	9	10	11	12	13
14	15	16	17	18	19	20
21	22	23	24	25	26	27
28	29	30	31			

December

						1
2	3	4	5	6	7	8
9	10	11	12	13	14	15
16	17	18	19	20	21	22
23	24	25	26	27	28	29
30	31					