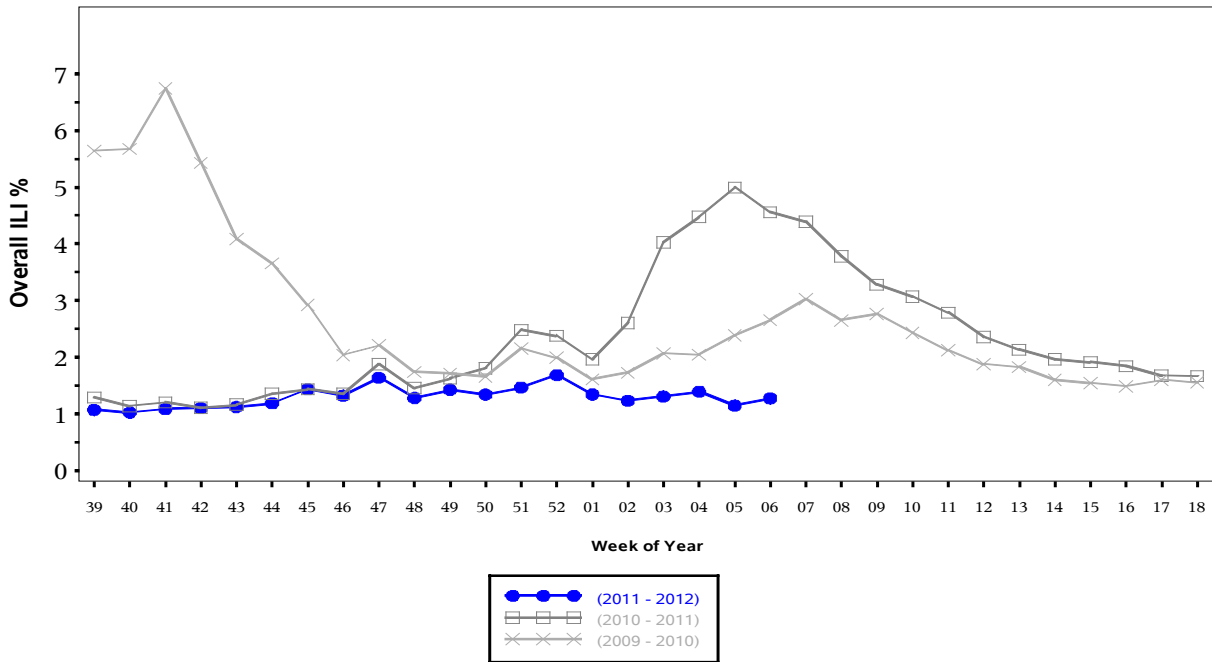


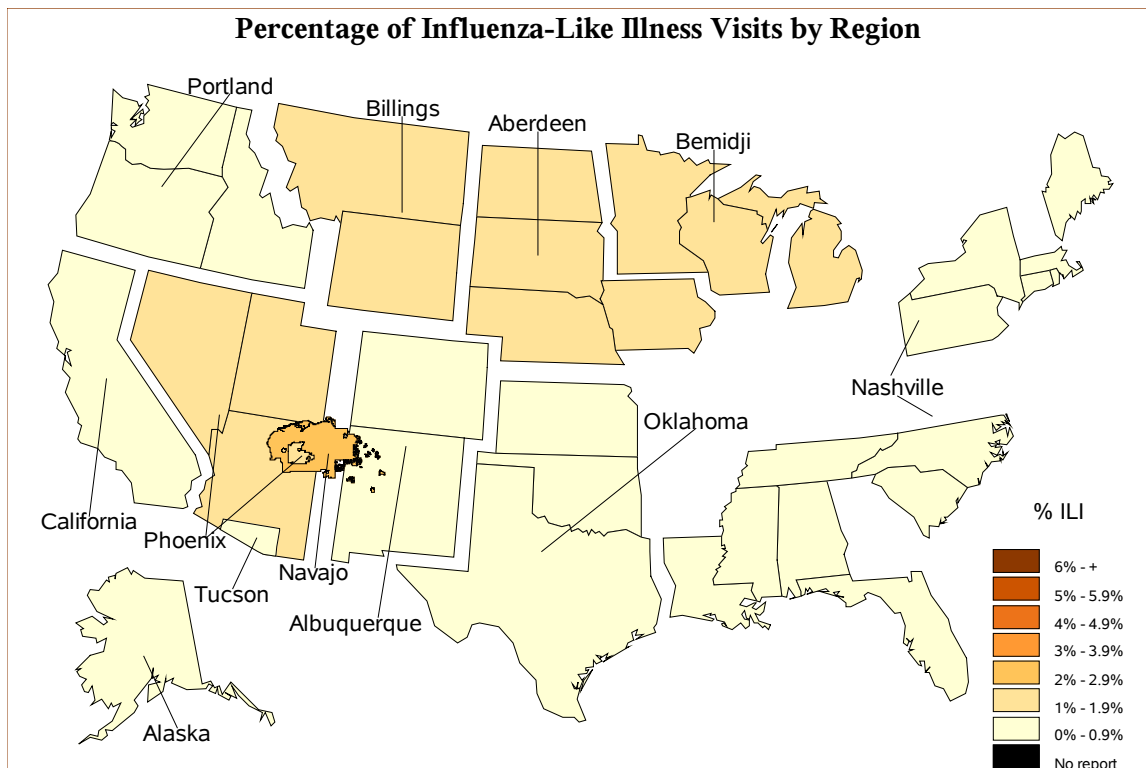


**Indian Health Service**  
 Division of Epidemiology and Disease  
 Prevention  
 Influenza Surveillance Report  
**IHS Influenza Awareness System (IIAS)**  
**#19 (Week 6: 2/5/2012 – 2/11/2012)**

**Percentage of Visits for Influenza-like Illness (ILI) per week**  
 Overall ILI % (ILI visits per week / Total visits per week)  
 (ILI) in IHS, October  
 through April



All data are preliminary and may change as more reports are received.

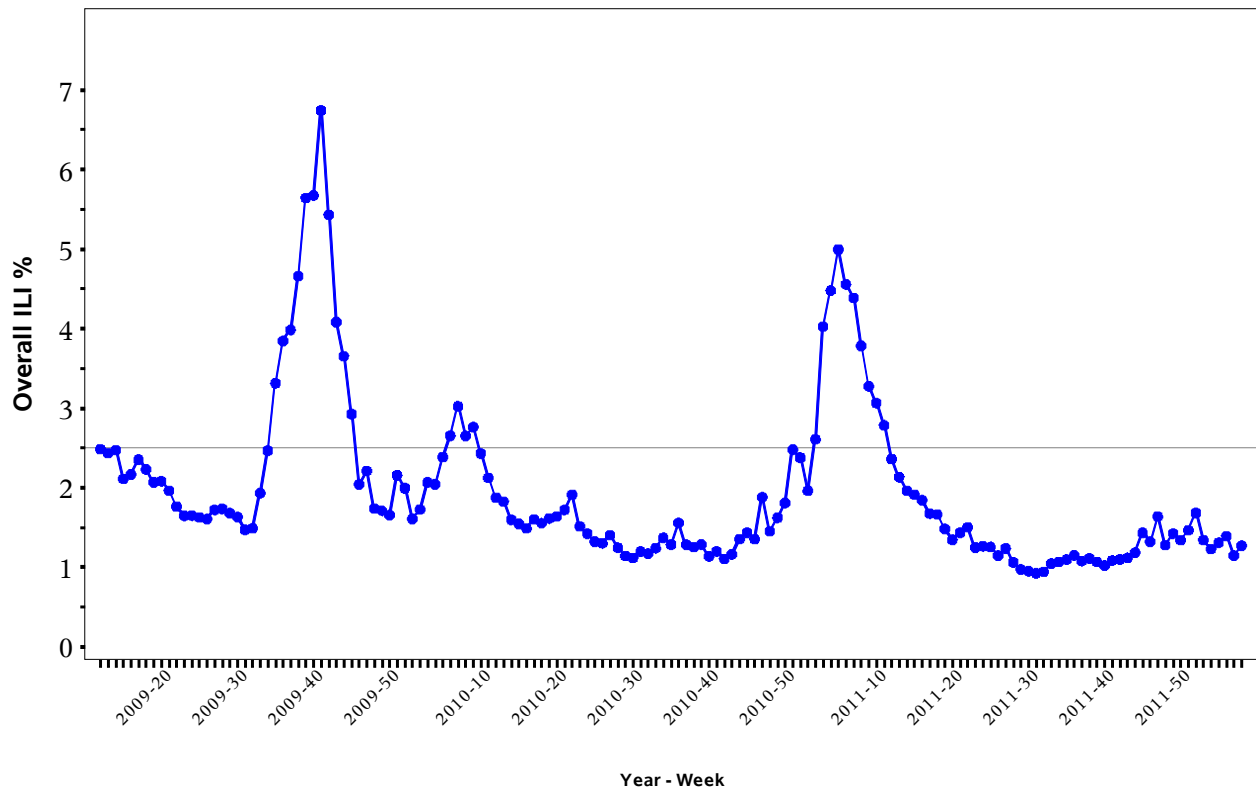


## % Visits for ILI Compared to Previous Week

| IHS Area    | % in week 5 | % in week 6 |
|-------------|-------------|-------------|
| NATIONAL    | 1.1         | 1.3         |
| Aberdeen    | 1.3         | 1.3         |
| Alaska      | 0.1         | 0.6         |
| Albuquerque | 0.8         | 0.8         |
| Bemidji     | 1.6         | 1.0         |
| Billings    | 1.1         | 1.5         |
| California  | 0.9         | 0.6         |
| Nashville   | 0.9         | 0.9         |
| Navajo      | 2.6         | 2.9         |
| Oklahoma    | 0.7         | 0.8         |
| Phoenix     | 1.5         | 1.7         |
| Portland    | 0.9         | 0.8         |
| Tucson      | 0.5         | 0.6         |

## Percentage of Visits for Influenza-like Illness (ILI) per week

Overall ILI % (ILI visits per week / Total visits per week)  
(ILI) in IHS, 03/23/2009  
through 02/11/2012



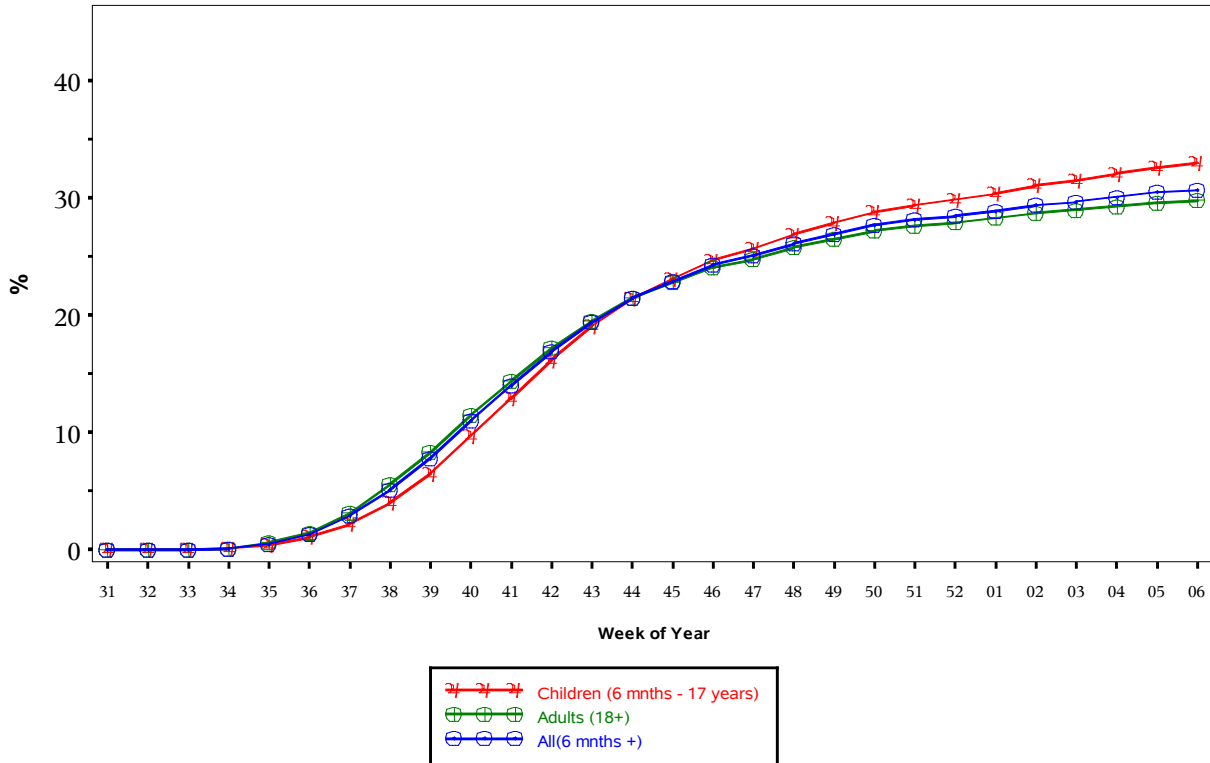
All data are preliminary and may change as more reports are received.

The baseline is the mean percentage of patient visits for ILI during non-influenza weeks for the previous two seasons plus two standard deviations

## IHS Influenza Vaccination Surveillance

- As of 2/11/2012, sites reporting to the IAS have administered 377,368 doses (1st and 2nd) of seasonal influenza vaccine to Active Clinical\* patients.

### Influenza Vaccine Coverage, IHS Influenza Awareness System Weeks 31 (07/31/2011) through 06 (02/11/2012), 2011 - 2012



(Active Clinical Population covered by the IAS)  
(\*Includes all doses administered.)

### Influenza Vaccination Coverage by Age Group

| Age Group                     | Active Clinical Population | 1 dose Seasonal Flu Vaccine | % Seasonal flu (1 dose) | 2 dose Seasonal Flu Vaccine | % Seasonal flu (2 dose) |
|-------------------------------|----------------------------|-----------------------------|-------------------------|-----------------------------|-------------------------|
| 6-23 months                   | 27,328                     | 16,694                      | 61.1                    | 5,411                       | 19.8                    |
| 2-4 years                     | 72,370                     | 23,802                      | 32.9                    | 2,535                       | 3.5                     |
| 5-17 years                    | 241,380                    | 76,651                      | 31.8                    | .                           | .                       |
| 18-49 years                   | 519,836                    | 131,512                     | 25.3                    | .                           | .                       |
| 50-64 years                   | 187,797                    | 74,011                      | 39.4                    | .                           | .                       |
| 65+ years                     | 103,001                    | 46,752                      | 45.4                    | .                           | .                       |
| Children (6 mnths - 17 years) | 341,078                    | 117,147                     | 34.3                    | .                           | .                       |
| Adults (18+)                  | 810,634                    | 252,275                     | 31.1                    | .                           | .                       |
| All(6 mnths +)                | 1,151,712                  | 369,422                     | 32.1                    | .                           | .                       |

\* Active Clinical population is defined as patients who have had at least 2 visits in the last 3 years

\*\* Limited to sites that exported both doses administered and active clinical population data

## Influenza Vaccination Coverage by Risk Group

| Risk Group | Active Clinical Population | 1 dose Seasonal Flu Vaccine | % Seasonal flu (1 dose) |
|------------|----------------------------|-----------------------------|-------------------------|
| Asthma     | 135,530                    | 22,455                      | 16.6                    |
| Diabetes   | 156,144                    | 46,978                      | 30.1                    |
| Pregnant   | 8,810                      | 3,092                       | 35.1                    |

\* Active Clinical population is defined as patients who have had at least 2 visits in the last 3 years

\*\* Limited to sites that exported both doses administered and active clinical population data

## Summary

- This report includes data from the following # of RPMS databases:

| IHS Area    | # of RPMS Databases Reporting |
|-------------|-------------------------------|
| Aberdeen    | 16                            |
| Alaska      | 10                            |
| Albuquerque | 10                            |
| Bemidji     | 3                             |
| Billings    | 8                             |
| California  | 20                            |
| Nashville   | 14                            |
| Navajo      | 7                             |
| Oklahoma    | 18                            |
| Phoenix     | 19                            |
| Portland    | 21                            |
| Tucson      | 1                             |
| All Areas   | 147                           |

- Nationwide, ILI visits appear to be stable and below the threshold, a trend seen in most IHS Areas and nationally.
- Influenza vaccination is underway and coverage levels are increasing, though are currently below the coverage estimates reported for the general U.S. population.