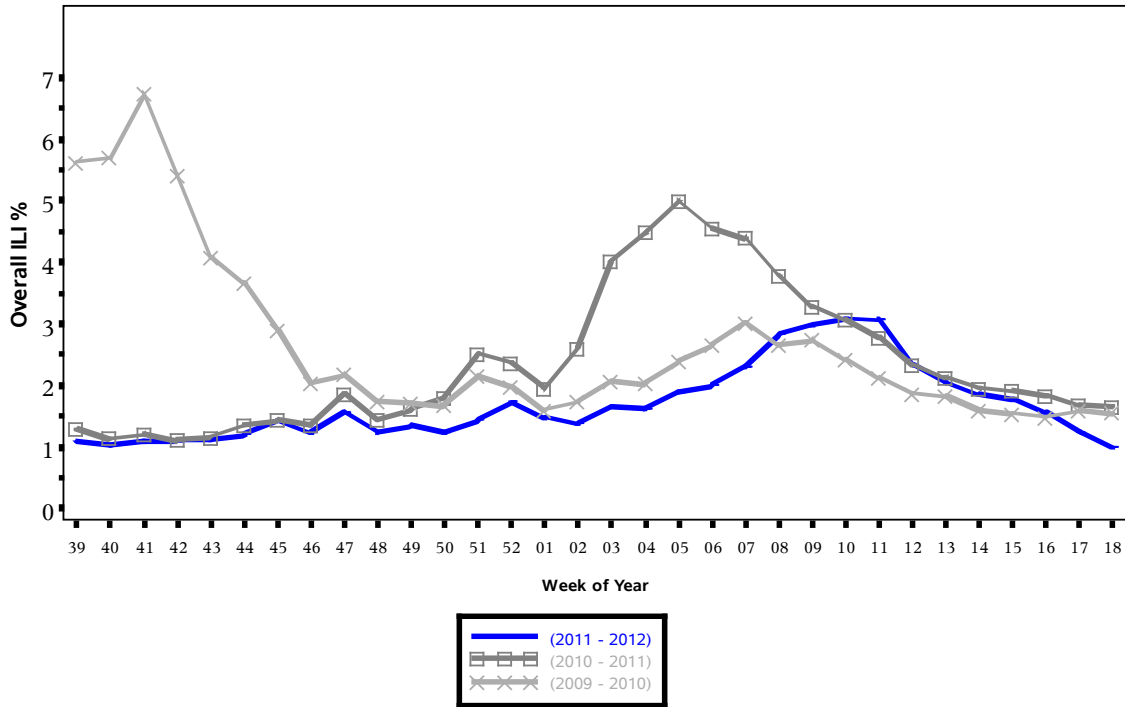


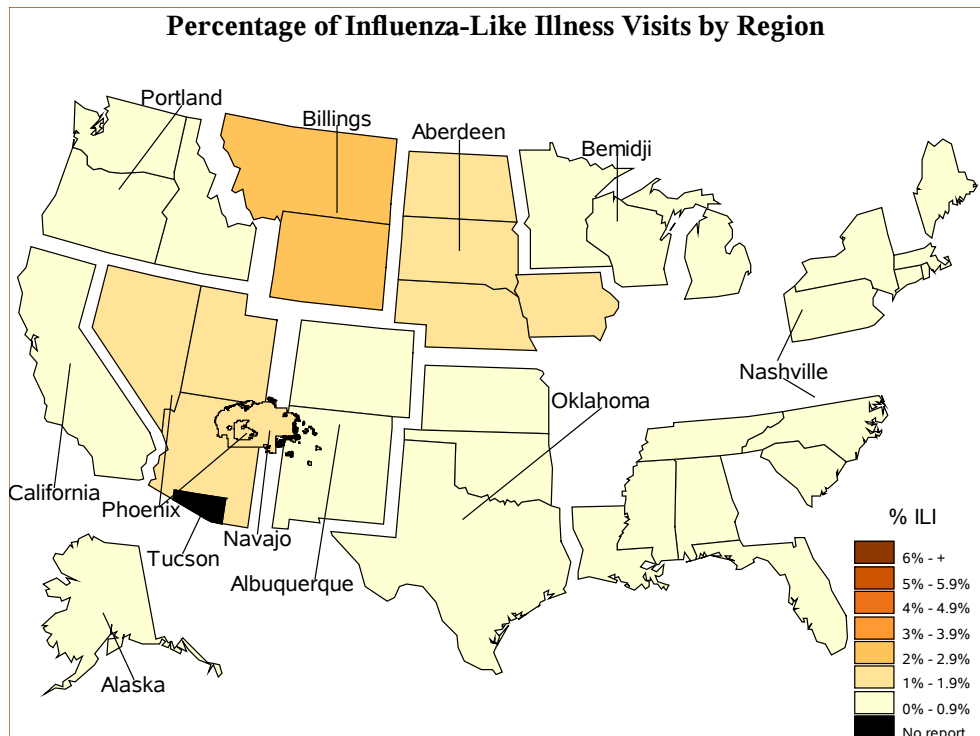


Indian Health Service
 Division of Epidemiology and Disease Prevention
Influenza Surveillance Report
IHS Influenza Awareness System (IIAS)
#32 (Week 19: 5/6/2012 – 5/12/2012)

Percentage of Visits for Influenza-like Illness (ILI) per week
 Overall ILI % (ILI visits per week / Total visits per week)
 (ILI) in IHS, October through April



All data are preliminary and may change as more reports are received.

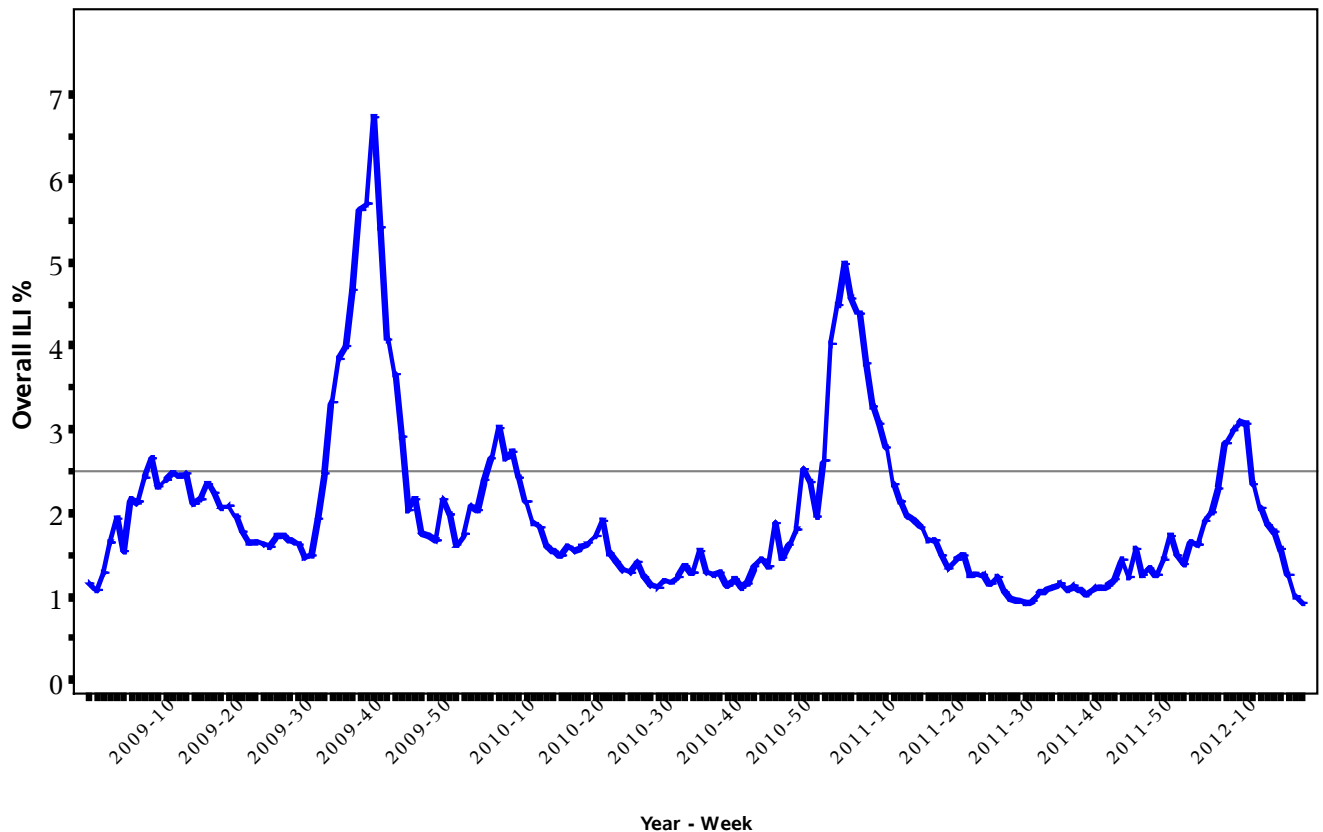


% Visits for ILI Compared to Previous Week

| IHS Area | % in week 18 | % in week 19 |
|-------------|--------------|--------------|
| NATIONAL | 1.0 | 1.0 |
| Aberdeen | 1.1 | 1.2 |
| Alaska | 0.5 | 0.7 |
| Albuquerque | 0.9 | 0.7 |
| Bemidji | 1.6 | 0.8 |
| Billings | 2.2 | 2.0 |
| California | 0.3 | 0.4 |
| Nashville | 0.4 | 0.8 |
| Navajo | 2.2 | 1.9 |
| Oklahoma | 0.2 | 0.4 |
| Phoenix | 1.6 | 1.2 |
| Portland | 0.8 | 0.6 |
| Tucson | 0.5 | . |

Percentage of Visits for Influenza-like Illness (ILI) per week

Overall ILI % (ILI visits per week / Total visits per week)
(ILI) in IHS, 03/23/2009
through 05/12/2012

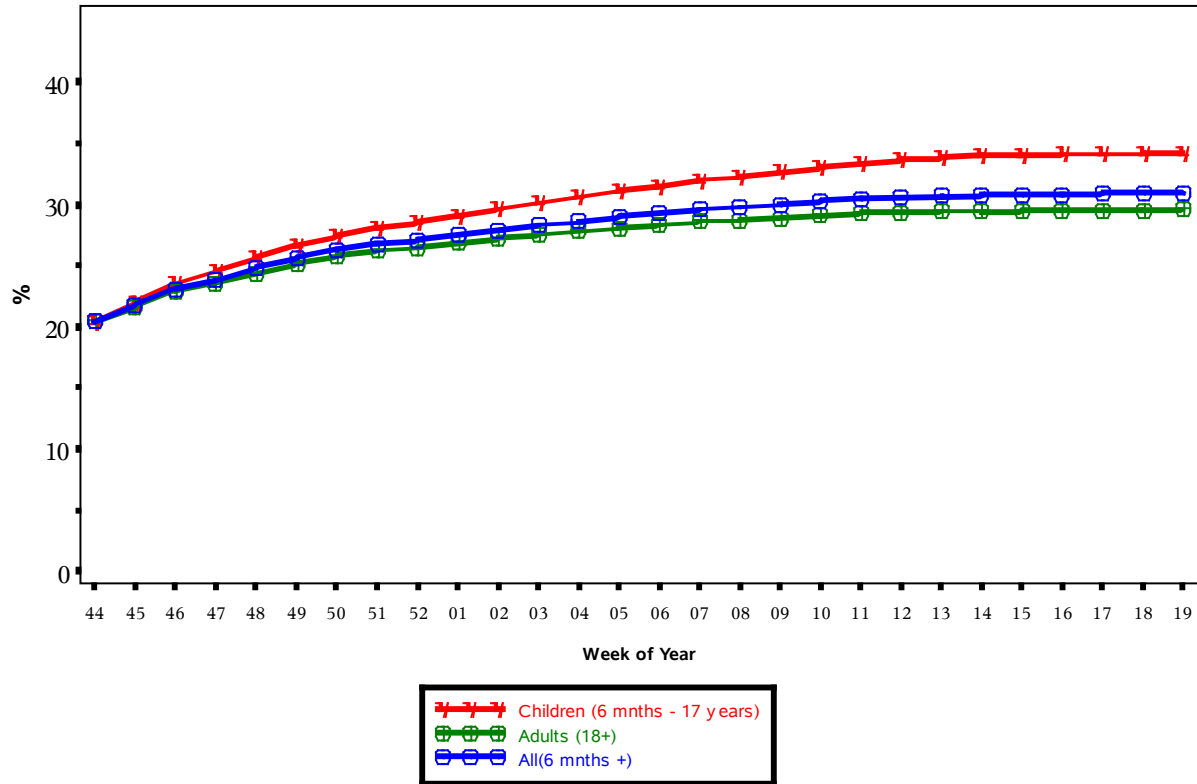


All data are preliminary and may change as more reports are received.
The baseline is the mean percentage of patient visits for ILI during non-influenza weeks for the previous two seasons plus two standard deviations.

IHS Influenza Vaccination Surveillance

- As of 5/12/2012, sites reporting to the IIAS have administered 405,941 doses (1st and 2nd) of seasonal influenza vaccine to Active Clinical* patients.

Influenza Vaccine Coverage, IHS Influenza Awareness System Weeks 44 (10/30/2011) through 19 (05/12/2012), 2011 - 2012



(Active Clinical Population covered by the IIAS)
*Includes all doses administered.

Influenza Vaccination Coverage by Age Group

| Age Group | Active Clinical Population | 1 dose Seasonal Flu Vaccine | % Seasonal flu (1 dose) | 2 dose Seasonal Flu Vaccine | % Seasonal flu (2 dose) |
|-------------------------------|----------------------------|-----------------------------|-------------------------|-----------------------------|-------------------------|
| 6-23 months | 28,918 | 19,418 | 67.1 | 7,609 | 26.3 |
| 2-4 years | 75,570 | 26,414 | 35.0 | 3,256 | 4.3 |
| 5-17 years | 255,742 | 82,514 | 32.3 | . | . |
| 18-49 years | 552,639 | 140,860 | 25.5 | . | . |
| 50-64 years | 201,707 | 77,396 | 38.4 | . | . |
| 65+ years | 111,088 | 48,474 | 43.6 | . | . |
| Children (6 mnths - 17 years) | 360,230 | 128,346 | 35.6 | . | . |
| Adults (18+) | 865,434 | 266,730 | 30.8 | . | . |
| All(6 mnths +) | 1,225,664 | 395,076 | 32.2 | . | . |

* Active Clinical population is defined as patients who have had at least 2 visits in the last 3 years

** Limited to sites that exported both doses administered and active clinical population data

Influenza Vaccination Coverage by Risk Group

| Risk Group | Active Clinical Population | 1 dose Seasonal Flu Vaccine | % Seasonal flu (1 dose) |
|-------------------|-----------------------------------|------------------------------------|--------------------------------|
| Asthma | 143,413 | 23,619 | 16.5 |
| Diabetes | 165,335 | 49,120 | 29.7 |
| Pregnant | 9,019 | 3,374 | 37.4 |

* Active Clinical population is defined as patients who have had at least 2 visits in the last 3 years

** Limited to sites that exported both doses administered and active clinical population data

Summary

- This report includes data from the following # of RPMS databases:

| IHS Area | # of RPMS Databases Reporting |
|-----------------|--------------------------------------|
| Aberdeen | 18 |
| Alaska | 11 |
| Albuquerque | 7 |
| Bemidji | 5 |
| Billings | 9 |
| California | 21 |
| Nashville | 15 |
| Navajo | 9 |
| Oklahoma | 21 |
| Phoenix | 18 |
| Portland | 21 |
| Tucson | 0 |
| All Areas | 155 |

- ILI activity continues to decrease nationwide for both IHS and the general U.S.