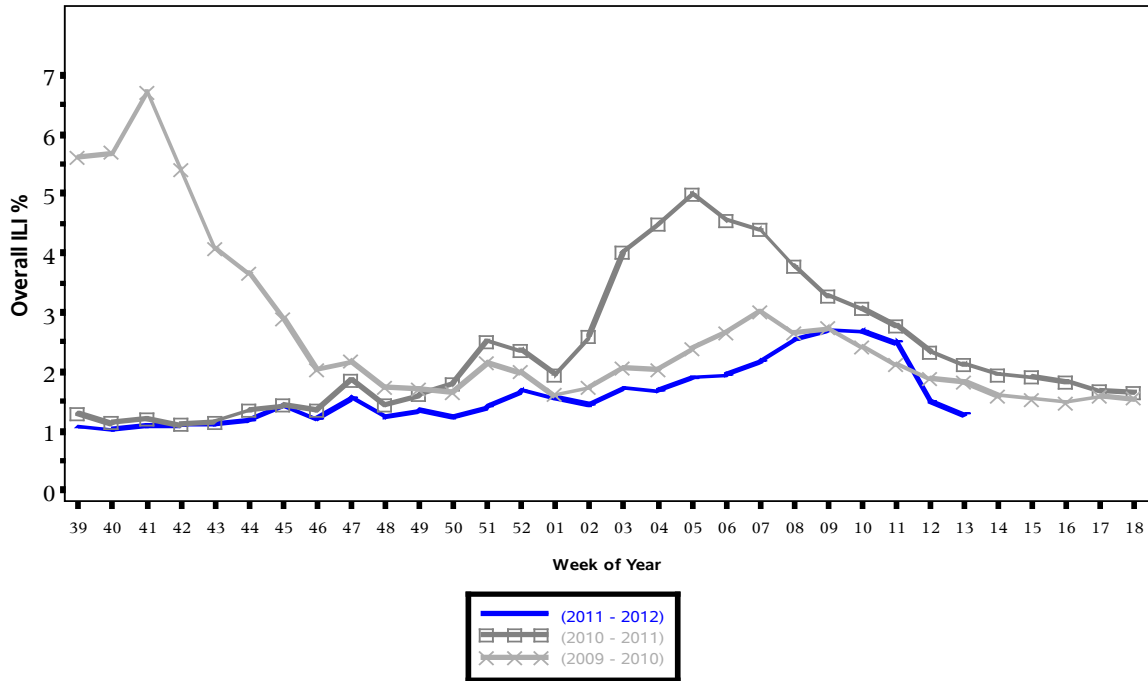


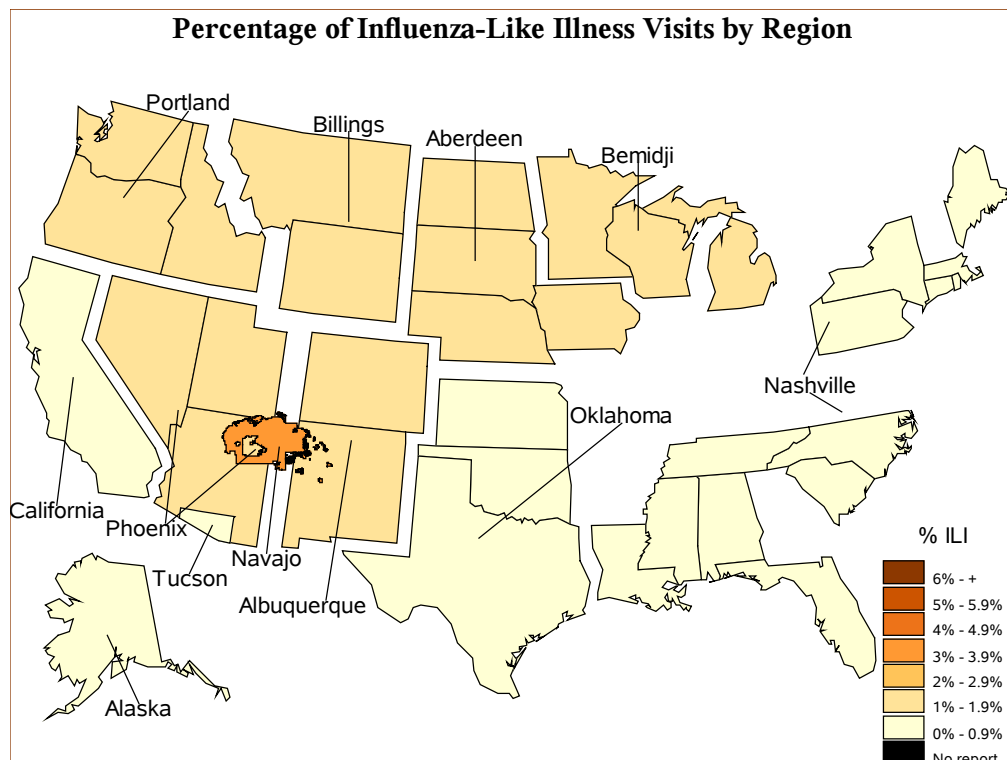


**Indian Health Service**  
 Division of Epidemiology and Disease Prevention  
 Influenza Surveillance Report  
**IHS Influenza Awareness System (IIAS)**  
**#26 (Week 13: 3/25/2012 – 3/31/2012)**

**Percentage of Visits for Influenza-like Illness (ILI) per week**  
 Overall ILI % (ILI visits per week / Total visits per week)  
 (ILI) in IHS, October through April



All data are preliminary and may change as more reports are received.



### % Visits for ILI Compared to Previous Week

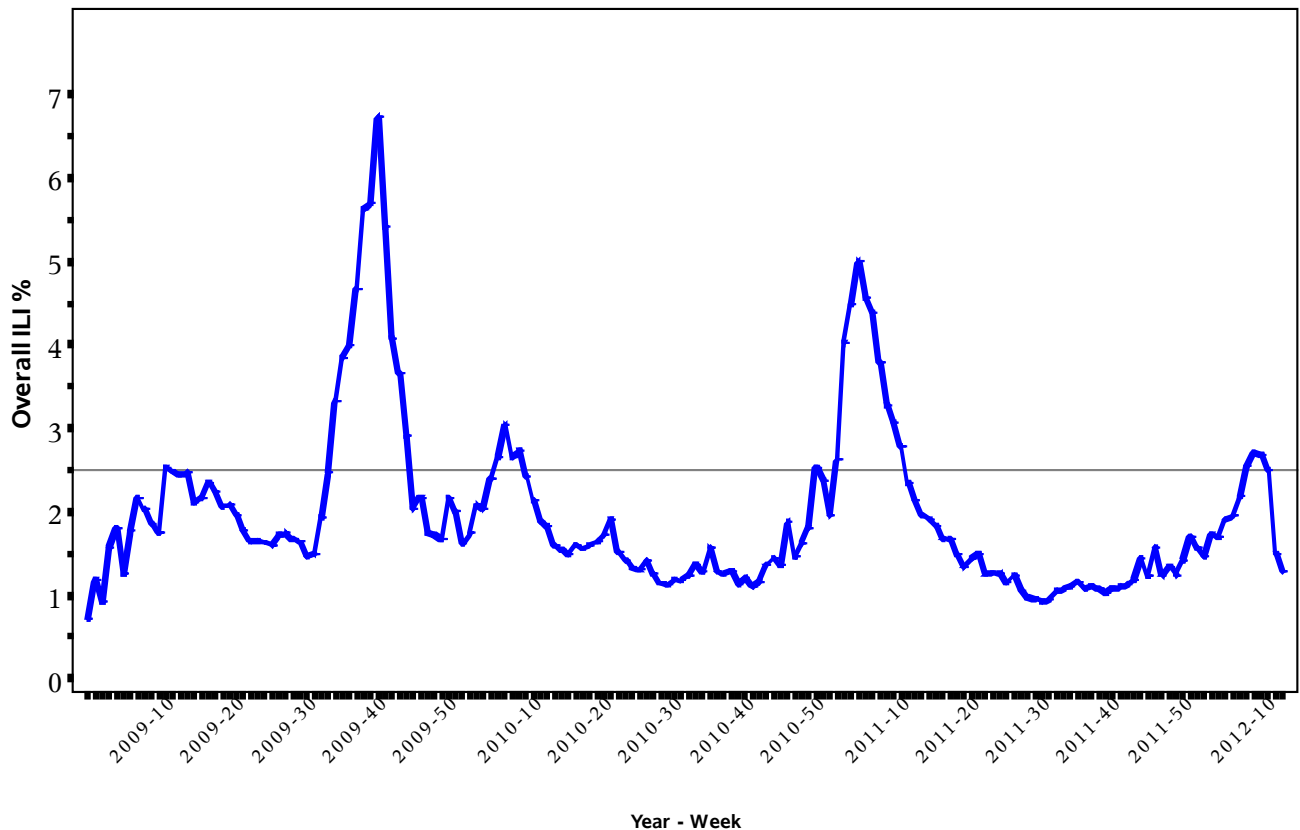
IHS Area	% in week 12	% in week 13
NATIONAL	1.5	1.3
Aberdeen	1.6	1.2
Alaska	0.6	0.7
Albuquerque	1.5	1.9
Bemidji	1.0	1.6
Billings	1.7	1.5
California	0.7	0.8
Nashville	0.8	0.8
Navajo	4.1	3.8
Oklahoma	0.7	0.4
Phoenix	1.6	1.5
Portland	0.9	1.1
Tucson	0.4	0.4

### Percentage of Visits for Influenza-like Illness (ILI) per week

Overall ILI % (ILI visits per week / Total visits per week)

(ILI) in IHS, 03/23/2009

through 03/31/2012



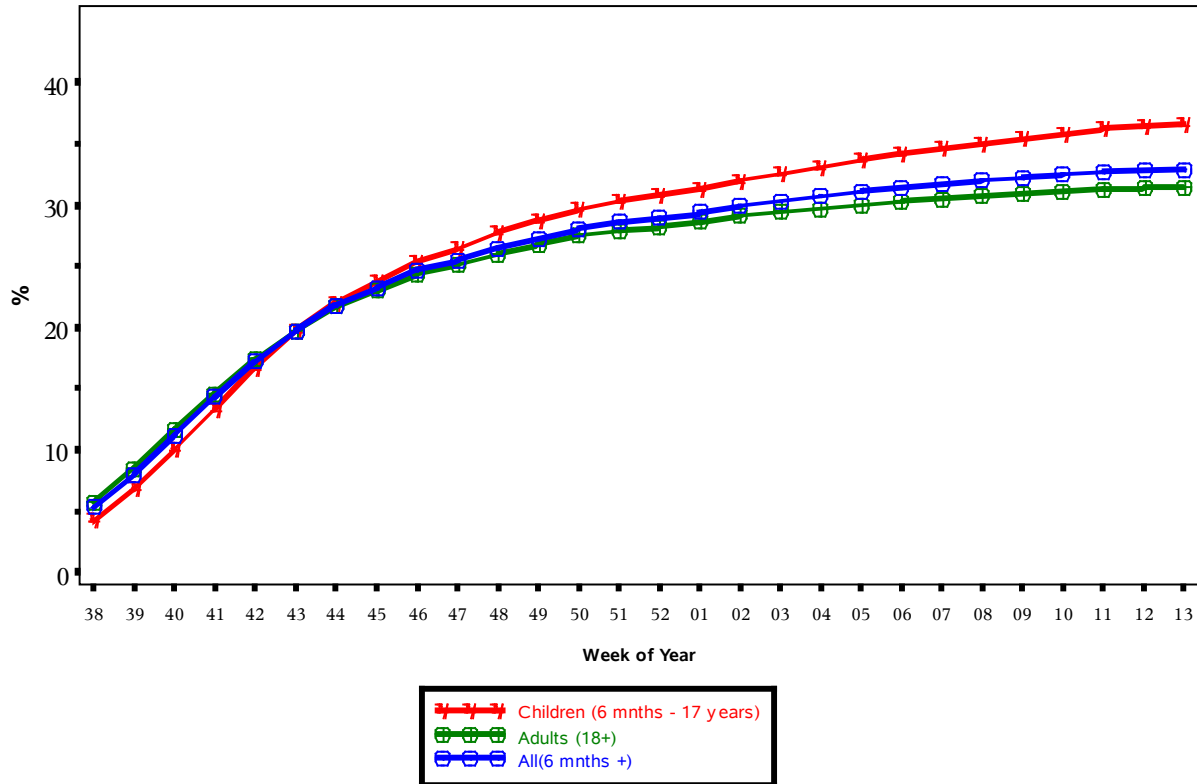
All data are preliminary and may change as more reports are received.

The baseline is the mean percentage of patient visits for ILI during non-influenza weeks for the previous two seasons plus two standard deviations.

## IHS Influenza Vaccination Surveillance

- As of 3/31/2012, sites reporting to the IIAS have administered 400,109 doses (1st and 2nd) of seasonal influenza vaccine to Active Clinical\* patients.

### Influenza Vaccine Coverage, IHS Influenza Awareness System Weeks 38 (09/18/2011) through 13 (03/31/2012), 2011 - 2012



(Active Clinical Population covered by the IIAS)  
(\*Includes all doses administered.)

### Influenza Vaccination Coverage by Age Group

Age Group	Active Clinical Population	1 dose Seasonal Flu Vaccine	% Seasonal flu (1 dose)	2 dose Seasonal Flu Vaccine	% Seasonal flu (2 dose)
6-23 months	26,543	18,870	71.1	7,146	26.9
2-4 years	69,497	25,954	37.3	3,142	4.5
5-17 years	236,463	81,547	34.5	.	.
18-49 years	512,938	138,885	27.1	.	.
50-64 years	188,113	76,631	40.7	.	.
65+ years	104,285	47,934	46.0	.	.
Children (6 mnths - 17 years)	332,503	126,371	38.0	.	.
Adults (18+)	805,336	263,450	32.7	.	.
All(6 mnths +)	1,137,839	389,821	34.3	.	.

\* Active Clinical population is defined as patients who have had at least 2 visits in the last 3 years

\*\* Limited to sites that exported both doses administered and active clinical population data

## Influenza Vaccination Coverage by Risk Group

Risk Group	Active Clinical Population	1 dose Seasonal Flu Vaccine	% Seasonal flu (1 dose)
Asthma	134,364	23,379	17.4
Diabetes	154,037	48,698	31.6
Pregnant	8,903	3,289	36.9

\* Active Clinical population is defined as patients who have had at least 2 visits in the last 3 years

\*\* Limited to sites that exported both doses administered and active clinical population data

## Summary

- This report includes data from the following # of RPMS databases:

IHS Area	# of RPMS Databases Reporting
Aberdeen	16
Alaska	6
Albuquerque	8
Bemidji	3
Billings	9
California	16
Nashville	15
Navajo	7
Oklahoma	20
Phoenix	18
Portland	20
Tucson	1
All Areas	139

- ILI activity continues to decrease nationwide for both IHS and the general U.S.