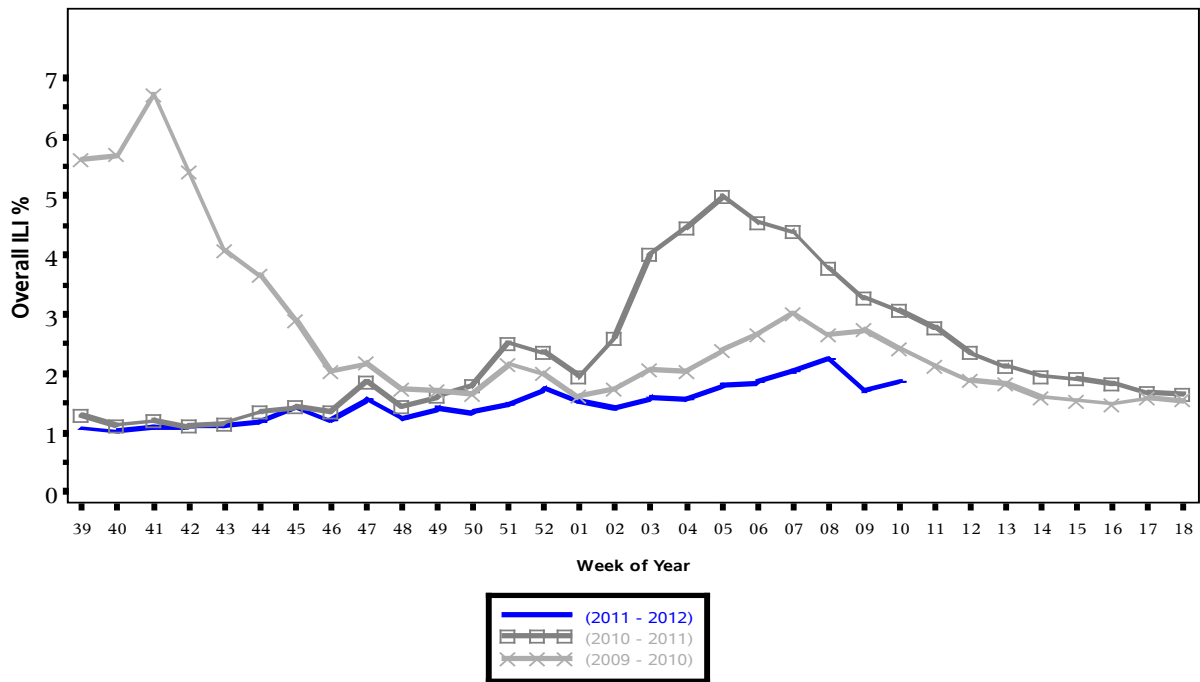


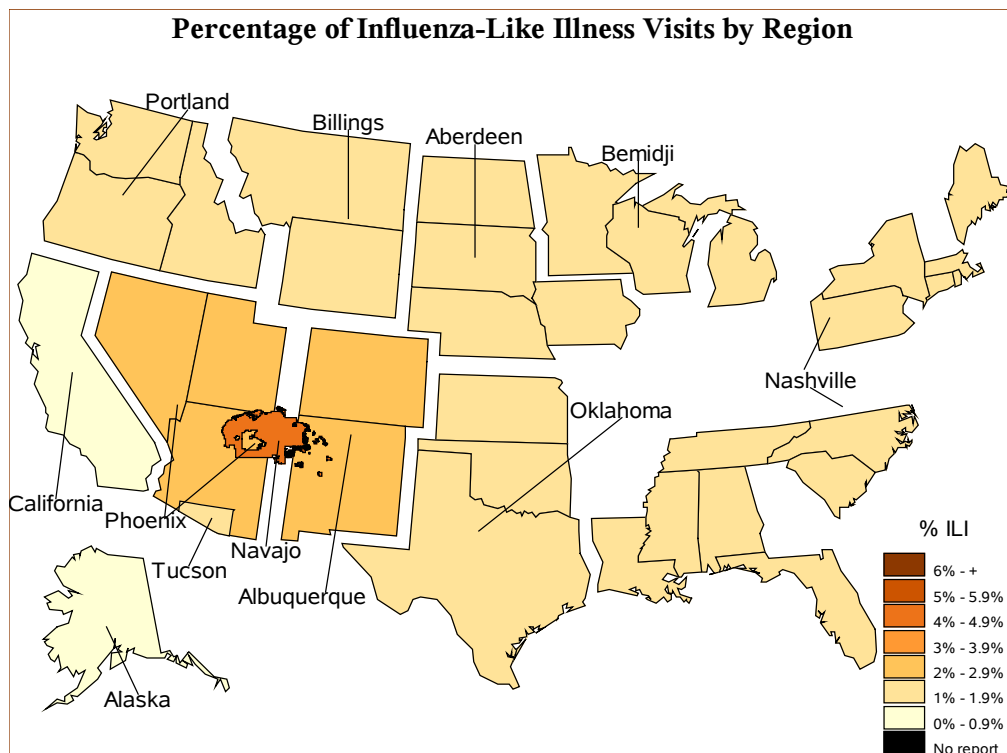


**Indian Health Service**  
 Division of Epidemiology and Disease  
 Prevention  
 Influenza Surveillance Report  
**IHS Influenza Awareness System (IIAS)**  
**#23 (Week 10: 3/4/2012 – 3/10/2012)**

**Percentage of Visits for Influenza-like Illness (ILI) per week**  
 Overall ILI % (ILI visits per week / Total visits per week)  
 (ILI) in IHS, October  
 through April



All data are preliminary and may change as more reports are received.



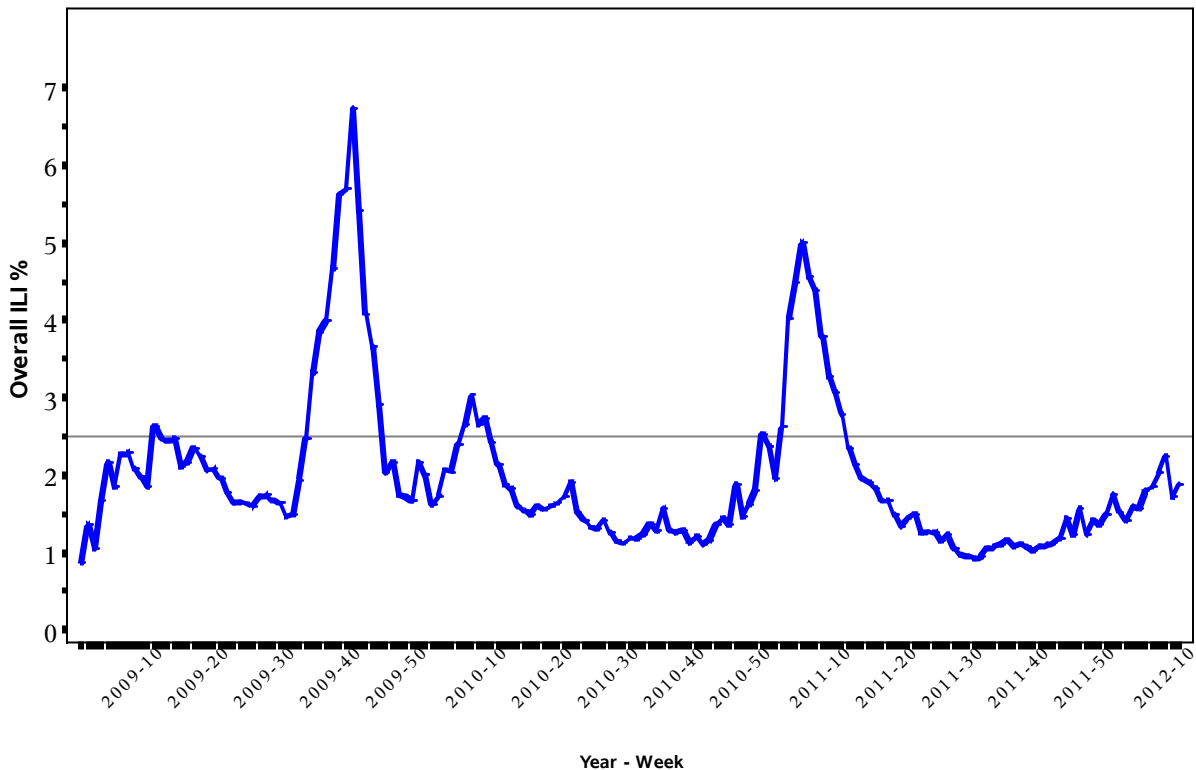
## % Visits for ILI Compared to Previous Week

IHS Area	% in week 9	% in week 10
NATIONAL	1.7	2.0
Aberdeen	1.7	1.7
Alaska	0.5	0.5
Albuquerque	2.1	2.5
Bemidji	1.6	1.6
Billings	1.3	1.2
California	0.7	0.7
Nashville	0.8	1.3
Navajo	4.7	4.4
Oklahoma	1.2	1.5
Phoenix	2.0	2.2
Portland	0.9	1.2
Tucson	0.5	1.0

### Percentage of Visits for Influenza-like Illness (ILI) per week

Overall ILI % (ILI visits per week / Total visits per week)

(ILI) in IHS, 03/23/2009  
through 03/10/2012

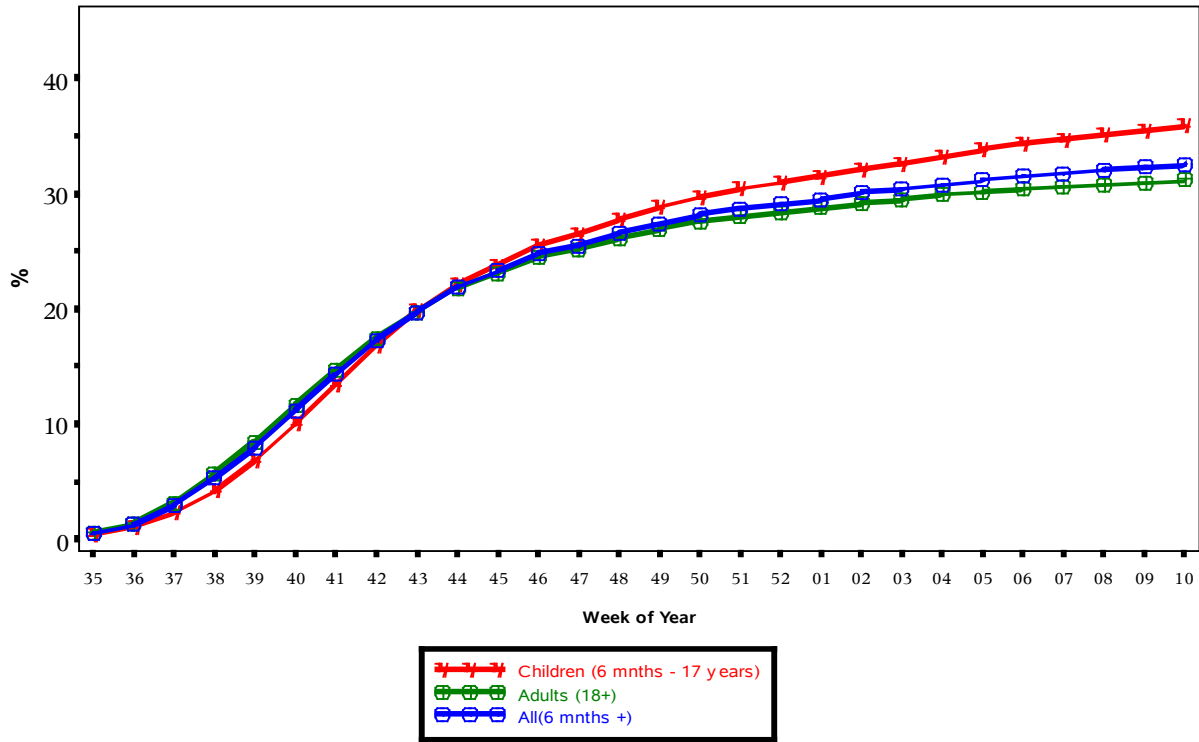


All data are preliminary and may change as more reports are received.  
The baseline is the mean percentage of patient visits for ILI during non-influenza weeks for the previous two seasons plus two standard deviations.

## IHS Influenza Vaccination Surveillance

- As of 3/10/2012, sites reporting to the IIAS have administered 394,165 doses (1st and 2nd) of seasonal influenza vaccine to Active Clinical\* patients.

**Influenza Vaccine Coverage, IHS Influenza Awareness System**  
Weeks 35 (08/28/2011) through 10 (03/10/2012), 2011 - 2012



(Active Clinical Population covered by the IIAS)  
(\*Includes all doses administered.)

### Influenza Vaccination Coverage by Age Group

Age Group	Active Clinical Population	1 dose Seasonal Flu Vaccine	% Seasonal flu (1 dose)	2 dose Seasonal Flu Vaccine	% Seasonal flu (2 dose)
6-23 months	26,237	18,218	69.4	6,569	25.0
2-4 years	69,570	25,384	36.5	2,943	4.2
5-17 years	235,643	80,225	34.0	.	.
18-49 years	511,251	137,101	26.8	.	.
50-64 years	187,475	76,054	40.6	.	.
65+ years	103,956	47,671	45.9	.	.
Children (6 mnths - 17 years)	331,450	123,827	37.4	.	.
Adults (18+)	802,682	260,826	32.5	.	.
All(6 mnths +)	1,134,132	384,653	33.9	.	.

\* Active Clinical population is defined as patients who have had at least 2 visits in the last 3 years  
\*\* Limited to sites that exported both doses administered and active clinical population data

## Influenza Vaccination Coverage by Risk Group

Risk Group	Active Clinical Population	1 dose Seasonal Flu Vaccine	% Seasonal flu (1 dose)
Asthma	133,432	23,159	17.4
Diabetes	153,471	48,278	31.5
Pregnant	8,362	3,230	38.6

\* Active Clinical population is defined as patients who have had at least 2 visits in the last 3 years

\*\* Limited to sites that exported both doses administered and active clinical population data

## Summary

- This report includes data from the following # of RPMS databases:

IHS Area	# of RPMS Databases Reporting
Aberdeen	17
Alaska	6
Albuquerque	6
Bemidji	3
Billings	8
California	21
Nashville	15
Navajo	7
Oklahoma	18
Phoenix	19
Portland	22
Tucson	1
All Areas	143

- Nationwide, ILI visits appear to be increasing slightly, though they remain below the threshold, a trend seen in most IHS Areas.
- Influenza vaccination coverage levels are increasing, though are currently below the coverage estimates reported for the general U.S. population.