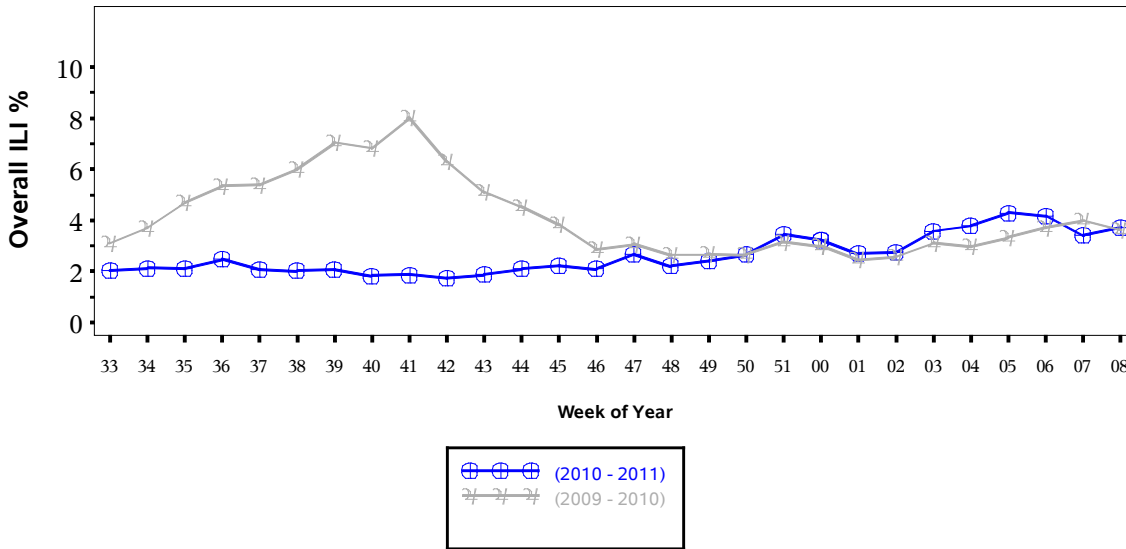


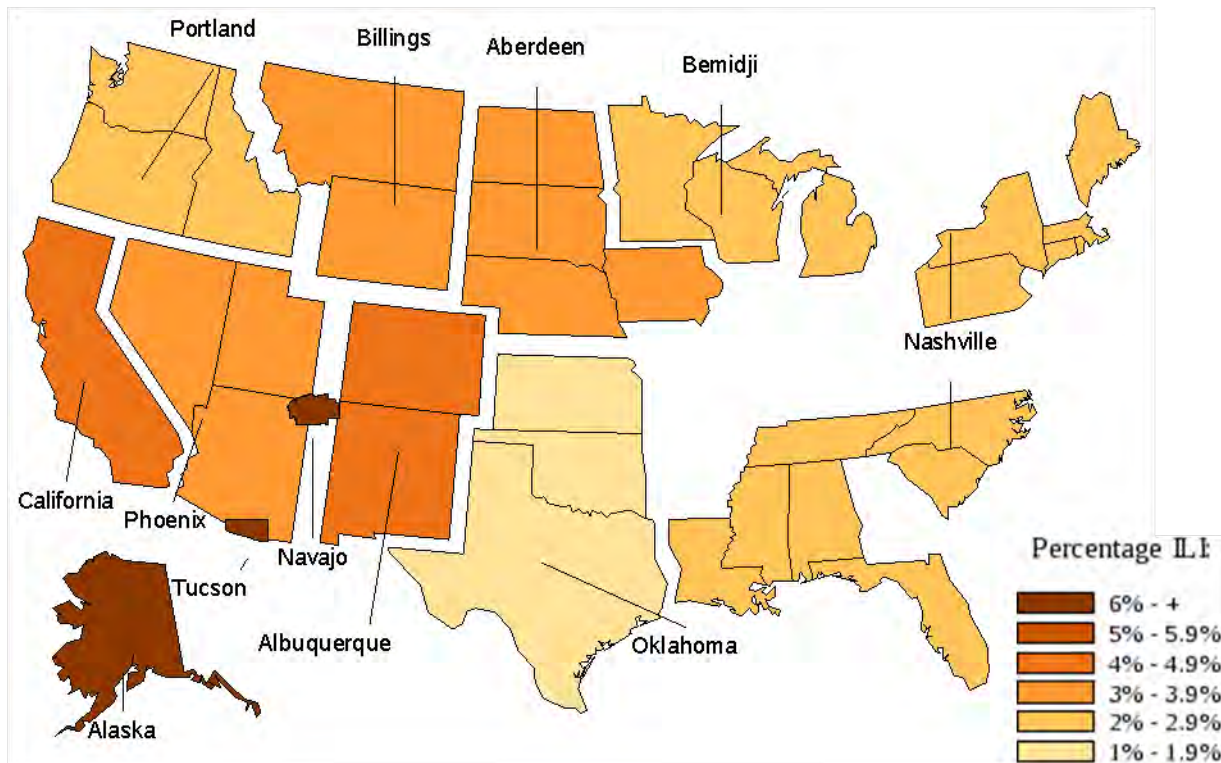


**Indian Health Service**  
 Division of Epidemiology and Disease Prevention  
 Influenza Surveillance Report  
**IHS Influenza Awareness System (IIAS)**  
**#13 (Week 8: 02/20/2011 – 02/26/2011)**

**Percentage of Visits for Influenza-like Illness (ILI) per week**  
**Overall ILI % (ILI visits per week / Total visits per week)**  
**(ILI) in IHS, Weeks 33 (08/15/2010)**  
**through 08 (02/26/2011)**



All data are preliminary and may change as more reports are received.



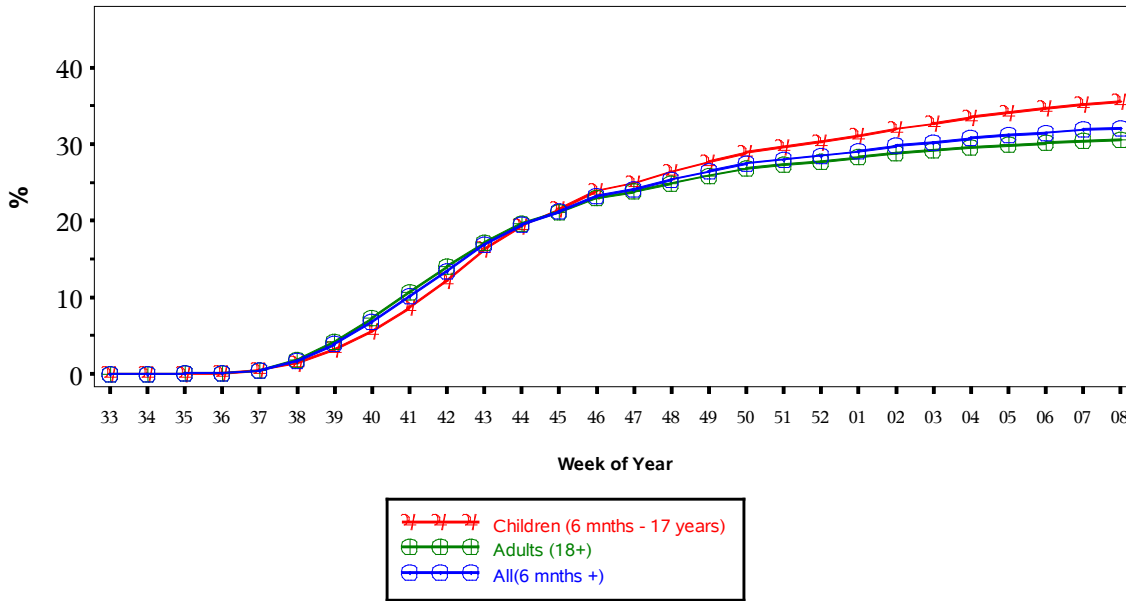
### **% Visits for ILI Compared to Previous Week**

<b>IHS Area</b>	<b>% in week 7</b>	<b>% in week 8</b>
NATIONAL	3.4	3.7
Aberdeen	3.1	3.9
Alaska	1.0	6.1
Albuquerque	4.9	4.3
Bemidji	2.8	2.2
Billings	3.3	3.5
California	3.9	4.0
Nashville	2.2	2.2
Navajo	5.7	6.0
Oklahoma	1.8	1.8
Phoenix	3.5	3.4
Portland	2.7	2.8
Tucson	5.2	6.2

## IHS Influenza Vaccination Surveillance

- As of 02/26/2011, sites reporting to the IIAS have administered 394,235 doses (1st and 2nd) of seasonal influenza vaccine to Active Clinical\* patients.

### Influenza Vaccine Coverage, IHS Influenza Awareness System Weeks 33 (08/15/2010) through 08 (02/26/2011), 2010 - 2011



(Active Clinical Population covered by the IIAS)

### Influenza Vaccination Coverage by Age Group

Age Group	Active Clinical Population	1 dose Seasonal Flu Vaccine	% Seasonal flu (1 dose)	2 dose Seasonal Flu Vaccine	% Seasonal flu (2 dose)
0	3,360	95	2.1	39	0.8
6-23 months	20,582	19,196	64.8	6,861	21.9
2-4 years	54,099	27,147	35.7	3,452	3.7
5-17 years	176,622	81,497	32.3	.	.
18-49 years	378,890	135,561	25.3	.	.
50-64 years	132,609	74,149	38.7	.	.
65+ years	71,114	46,333	44.3	.	.
Children (6 mnths - 17 years)	251,303	127,840	35.7	.	.
Adults (18+)	582,613	256,043	30.7	.	.
All (6 mnths +)	833,916	383,883	32.2	.	.

\* Active Clinical population is defined as patients who have had at least 2 visits in the last 3 years

## Influenza Vaccination Coverage by Risk Group

Risk Group	Active Clinical Population	1 dose Seasonal Flu Vaccine	% Seasonal flu (1 dose)
Asthma	97,142	21,625	15.8
Diabetes	116,307	45,913	29.2
Pregnant	6,447	2,910	30.5

\* Active Clinical population is defined as patients who have had at least 2 visits in the last 3 years

### Summary

- This report includes data from the following # RPMS databases:

IHS Area	# of RPMS Databases Reporting
Aberdeen	18
Alaska	5
Albuquerque	7
Bemidji	2
Billings	10
California	19
Nashville	11
Navajo	6
Oklahoma	20
Phoenix	16
Portland	21
Tucson	3
All Areas	138

- Nationwide, ILI visits show a slight increase; a trend seen in most IHS Areas.
- Modest increases in vaccination coverage continue and coverage is comparable to current U.S. estimates for most age groups.
- Low coverage among the 65+ years age group compared to previous years and current season U.S. estimates is of concern.