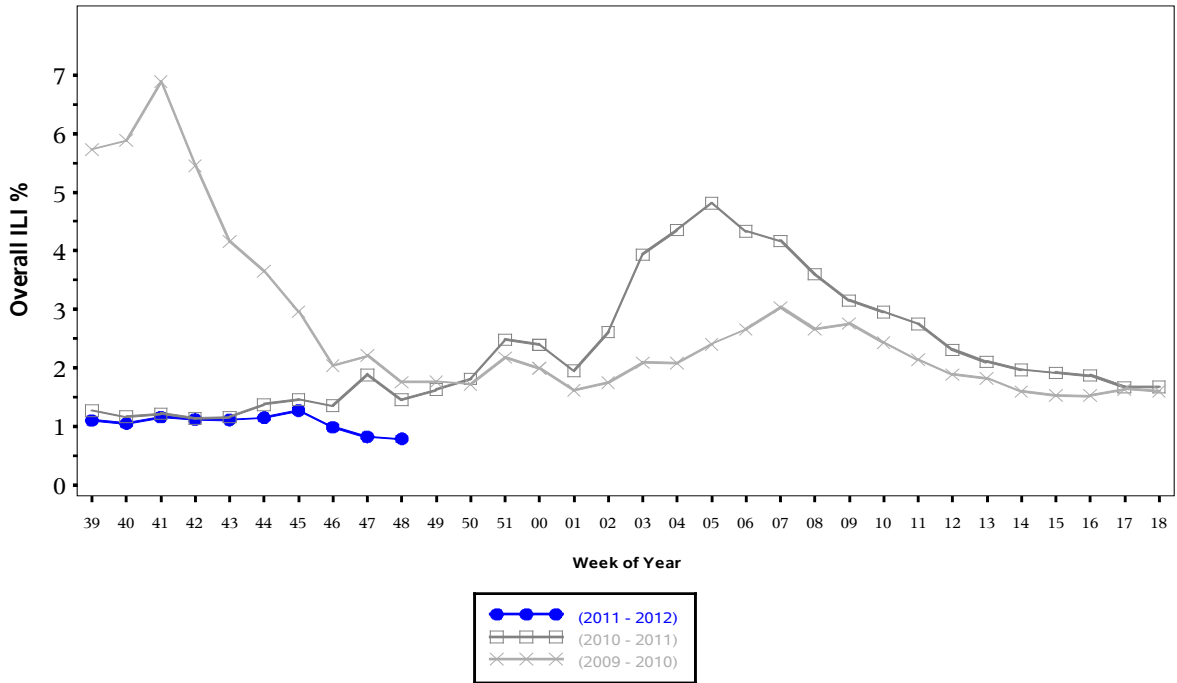


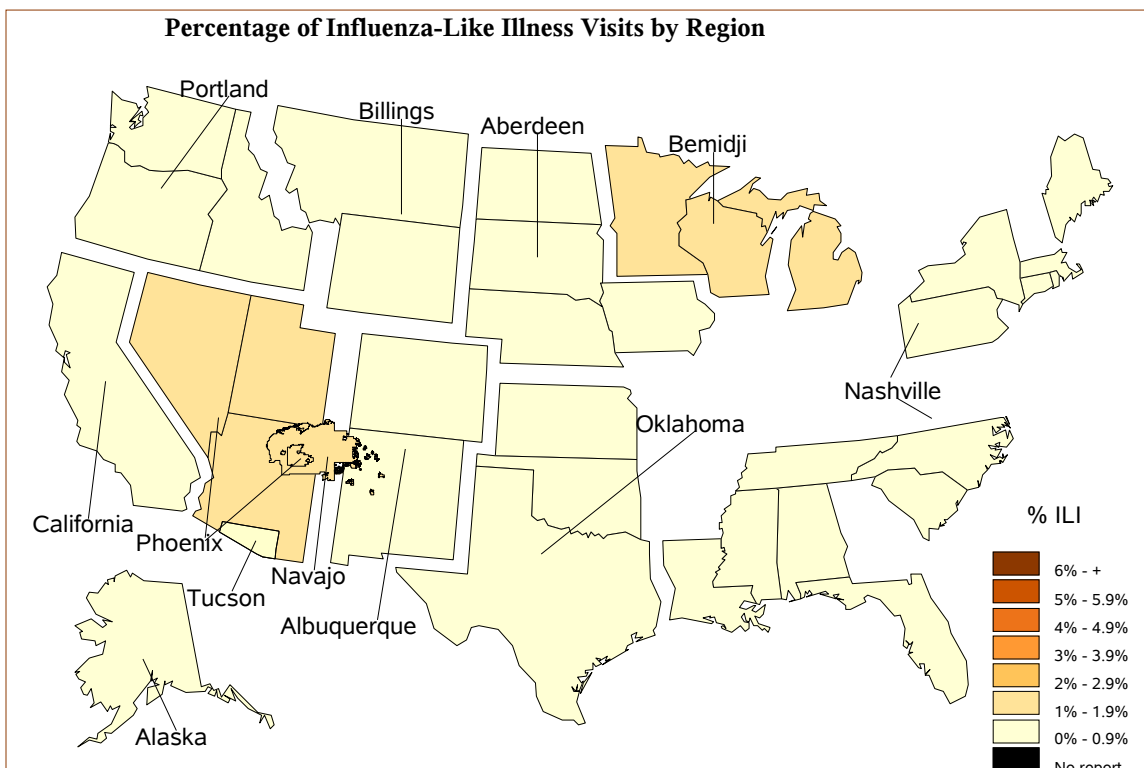


**Indian Health Service**  
 Division of Epidemiology and Disease  
 Prevention  
 Influenza Surveillance Report  
**IHS Influenza Awareness System (IIAS)**  
**#9 (Week 48: 11/27/2011 – 12/3/2011)**

**Percentage of Visits for Influenza-like Illness (ILI) per week**  
**Overall ILI % (ILI visits per week / Total visits per week)**  
**(ILI) in IHS, October**  
**through April**



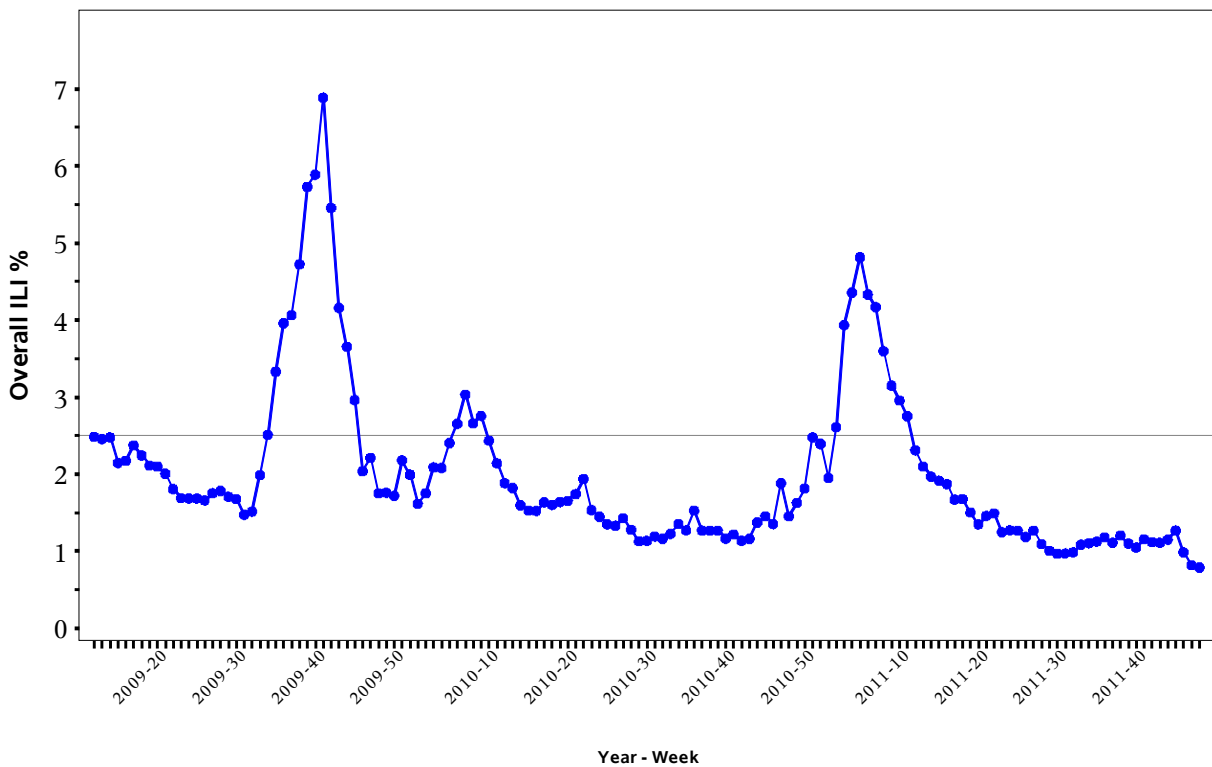
All data are preliminary and may change as more reports are received.



## % Visits for ILI Compared to Previous Week

IHS Area	% in week 47	% in week 48
NATIONAL	0.8	0.8
Aberdeen	0.9	0.6
Alaska	0.0	0.1
Albuquerque	0.8	0.8
Bemidji	0.7	1.3
Billings	0.7	0.9
California	0.8	0.4
Nashville	1.0	0.8
Navajo	1.3	1.2
Oklahoma	0.4	0.5
Phoenix	1.0	1.1
Portland	0.6	0.5
Tucson	0.1	0.0

**Percentage of Visits for Influenza-like Illness (ILI) per week**  
**Overall ILI % (ILI visits per week / Total visits per week)**  
 (ILI) in IHS, 03/23/2009  
 through 12/03/2011

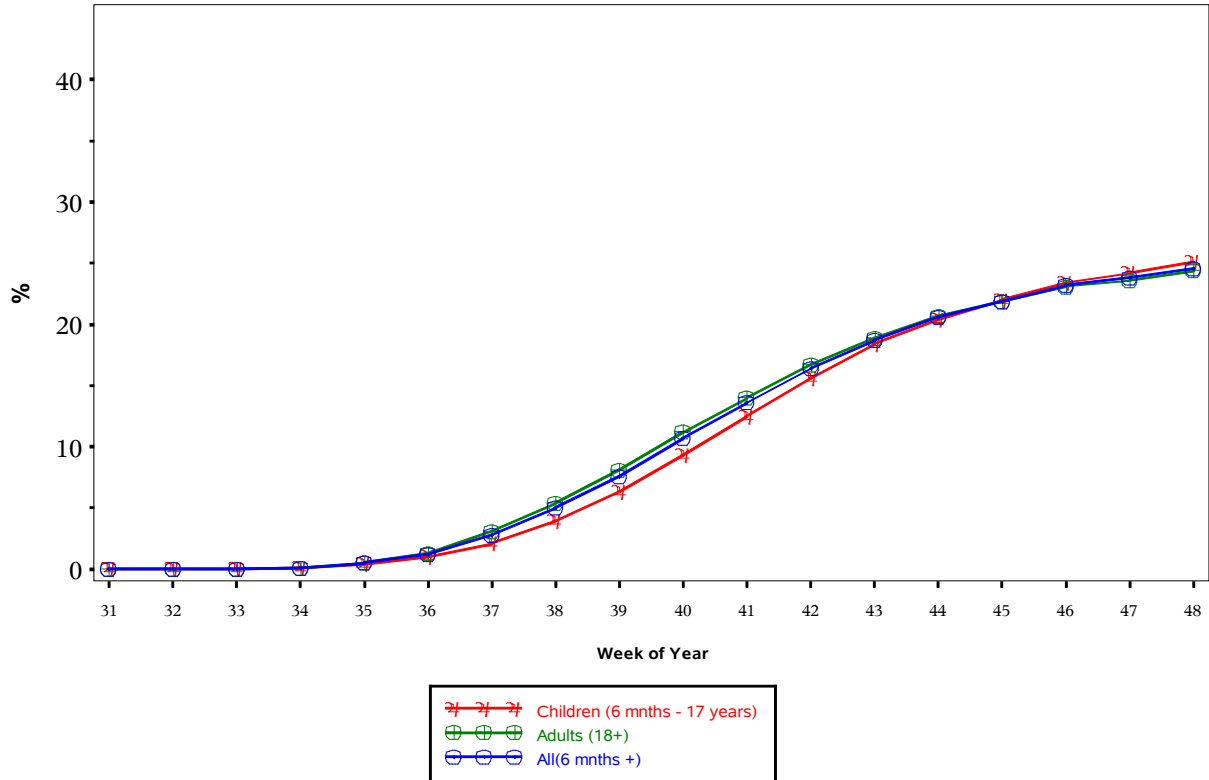


All data are preliminary and may change as more reports are received.  
 The baseline is the mean percentage of patient visits for ILI during non-influenza weeks for the previous two seasons plus two standard deviations

## IHS Influenza Vaccination Surveillance

- As of 12/3/2011, sites reporting to the IIAS have administered 293,935 doses (1st and 2nd) of seasonal influenza vaccine to Active Clinical\* patients.

### Influenza Vaccine Coverage, IHS Influenza Awareness System Weeks 31 (07/31/2011) through 48 (12/03/2011), 2011 - 2012



(Active Clinical Population covered by the IIAS)  
\* Includes all doses administered

### Influenza Vaccination Coverage by Age Group

Age Group	Active Clinical Population	1 dose Seasonal Flu Vaccine	% Seasonal flu (1 dose)	2 dose Seasonal Flu Vaccine	% Seasonal flu (2 dose)
6-23 months	26,903	11,290	42.0	2,211	8.2
2-4 years	72,638	17,589	24.2	1,477	2.0
5-17 years	240,212	59,292	24.7	.	.
18-49 years	515,335	103,071	20.0	.	.
50-64 years	185,766	60,210	32.4	.	.
65+ years	101,645	38,795	38.2	.	.
Children (6 mths - 17 years)	339,753	88,171	26.0	.	.
Adults (18+)	802,746	202,076	25.2	.	.
All(6 mths +)	1,142,499	290,247	25.4	.	.

\* Active Clinical population is defined as patients who have had at least 2 visits in the last 3 years

\*\* Limited to sites that exported both doses administered and active clinical population data

## Influenza Vaccination Coverage by Risk Group

Risk Group	Active Clinical Population	1 dose Seasonal Flu Vaccine	% Seasonal flu (1 dose)
Asthma	134,307	18,313	13.6
Diabetes	153,397	37,996	24.8
Pregnant	8,458	2,496	29.5

\* Active Clinical population is defined as patients who have had at least 2 visits in the last 3 years

## Summary

- This report includes data from the following # of RPMS databases:

IHS Area	# of RPMS Databases Reporting
Aberdeen	15
Alaska	6
Albuquerque	8
Bemidji	3
Billings	8
California	22
Nashville	12
Navajo	6
Oklahoma	20
Phoenix	17
Portland	21
Tucson	1
All Areas	139

- Nationwide, ILI visits appear to be stable and below the threshold, a trend seen in most IHS Areas and nationally.
- Influenza vaccination is underway and coverage levels are increasing