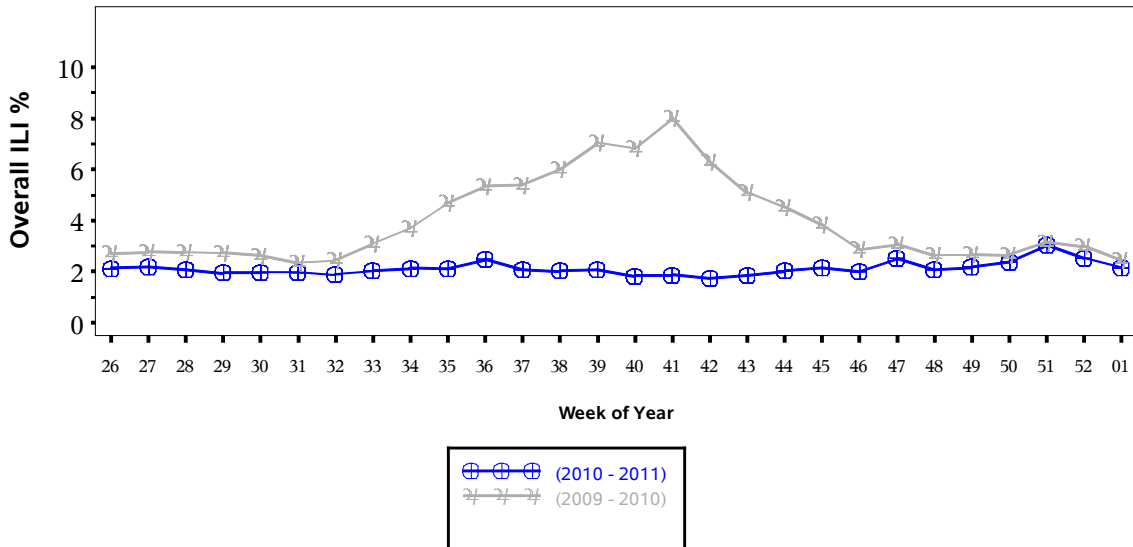




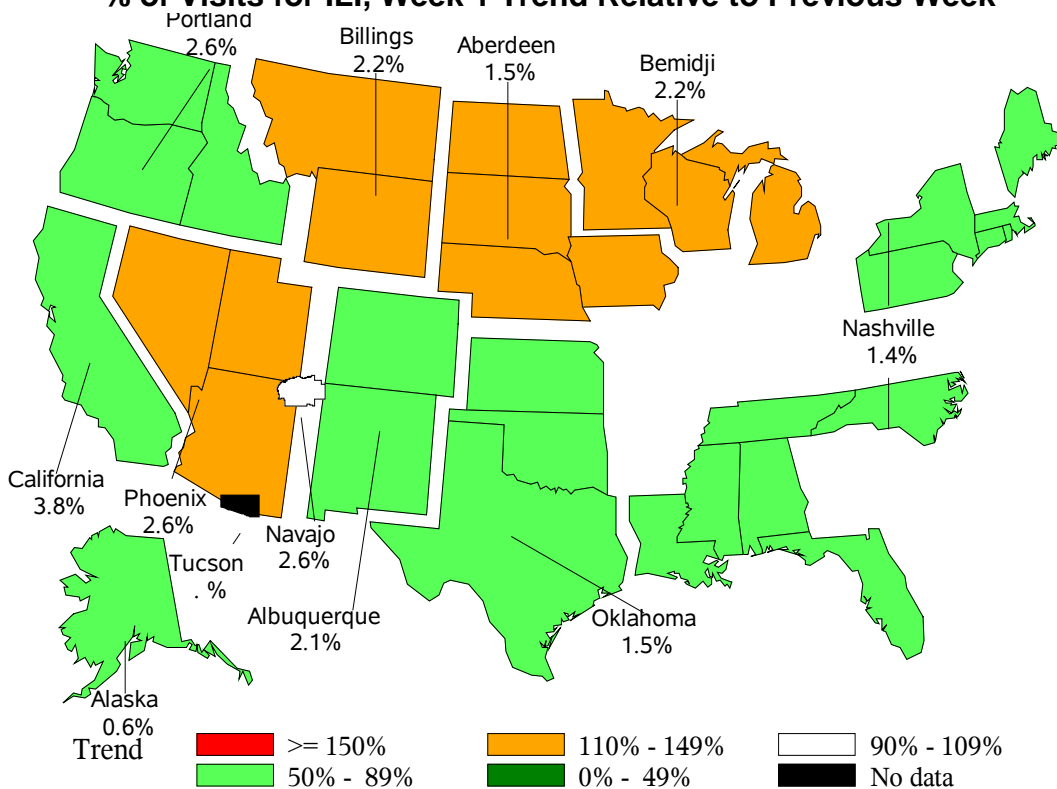
Indian Health Service
 Division of Epidemiology and Disease
 Prevention
 Influenza Surveillance Report
IHS Influenza Awareness System (IIAS)
#6 (Week 1: 01/02/2011 – 01/08/2011)

Percentage of Visits for Influenza-like Illness (ILI) per week
Overall ILI % (ILI visits per week / Total visits per week)
(ILI) in IHS, Weeks 26 (06/27/2010)
through 01 (01/08/2011)



All data are preliminary and may change as more reports are received.

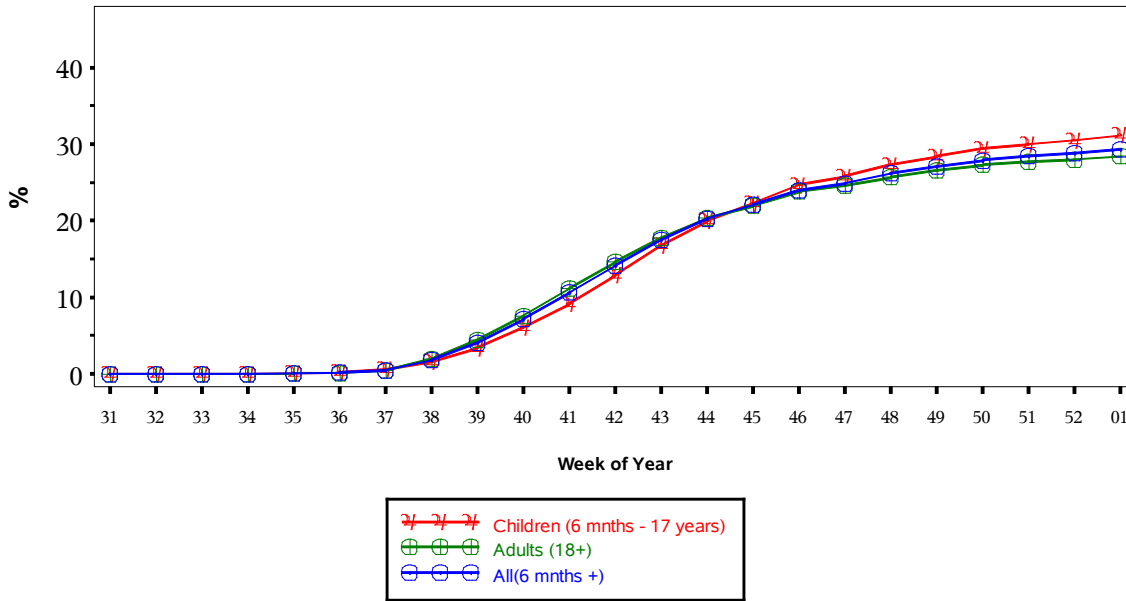
% of Visits for ILI, Week 1 Trend Relative to Previous Week



IHS Influenza Vaccination Surveillance

- As of 01/08/2011, sites reporting to the IIAS have administered 334,528 doses (1st and 2nd) of seasonal influenza vaccine to Active Clinical* patients.

Influenza Vaccine Coverage, IHS Influenza Awareness System Weeks 31 (08/01/2010) through 01 (01/08/2011), 2010 - 2011



(Active Clinical Population covered by the IIAS)

Table 1: Influenza Vaccination Coverage by Age Group

| Age Group | Active Clinical Population | 1 dose Seasonal Flu Vaccine | % Seasonal flu (1 dose) | 2 dose Seasonal Flu Vaccine | % Seasonal flu (2 dose) |
|--------------------------------|----------------------------|-----------------------------|-------------------------|-----------------------------|-------------------------|
| 0 | 3,465 | 71 | 1.7 | 18 | 0.5 |
| 6-23 months | 21,046 | 14,501 | 52.9 | 3,856 | 14.8 |
| 2-4 years | 56,805 | 22,007 | 30.6 | 2,456 | 3.7 |
| 5-17 years | 184,896 | 68,601 | 28.9 | . | . |
| 18-49 years | 398,451 | 116,042 | 23.0 | . | . |
| 50-64 years | 141,614 | 65,474 | 36.4 | . | . |
| 65+ years | 77,654 | 41,573 | 41.9 | . | . |
| Children (6 months - 17 years) | 262,747 | 105,109 | 31.2 | . | . |
| Adults (18+) | 617,719 | 223,089 | 28.4 | . | . |
| All (6 months +) | 880,466 | 328,198 | 29.3 | . | . |

* Active Clinical population is defined as patients who have had at least 2 visits in the last 3 years

Table 2: Influenza Vaccination Coverage by Risk Group

| Risk Group | Active Clinical Population | 1 dose Seasonal Flu Vaccine | % Seasonal flu (1 dose) |
|------------|----------------------------|-----------------------------|-------------------------|
| Asthma | 99,604 | 19,174 | 15.2 |
| Diabetes | 119,930 | 40,219 | 27.5 |
| Pregnant | 6,191 | 2,471 | 29.7 |

* Active Clinical population is defined as patients who have had at least 2 visits in the last 3 years

Summary

- This report includes data from the following # of RPMS databases:

| IHS Area | # of RPMS Databases Reporting |
|-------------|-------------------------------|
| Aberdeen | 14 |
| Alaska | 4 |
| Albuquerque | 8 |
| Bemidji | 3 |
| Billings | 9 |
| California | 21 |
| Nashville | 10 |
| Navajo | 6 |
| Oklahoma | 20 |
| Phoenix | 17 |
| Portland | 23 |
| Tucson | 1 |
| All Areas | 136 |

- Overall, there is a decrease in ILI in IHS nationwide, though there is an increase in the Northern Plains and the Southwest relative to the previous week.
- Modest increases in vaccination coverage.
- U.S. general population influenza vaccine coverage estimates for Nov. 2010ⁱ, based on self-report (not medical chart review) are:
 - 6 months – 17 yrs: 30.6% (± 5.0%);
 - 18+ yrs: 33.5% (± 2.5%);
 - All ages: 32.8% (± 2.4%).

While these estimates are higher than those reported by I/T/U sites through the IIAS, differences in survey methodology may account for some of the difference.

ⁱ <http://www.cdc.gov/flu/pdf/vaccination/rapidflusurvey.pdf>