

Regional Archives
**Pacific
Region
San Francisco**

1000 Commodore Drive
San Bruno, California 94066-2350



Chun Duck Chin and his son, Chun Jan Yut, 1899. RG 85

Regional Archives
**Pacific
Region
San Francisco**

1000 Commodore Drive
San Bruno, California 94066-2350



Children playing at new housing project, Richmond, CA, 1943. RG 178

The Regional Archives at NARA's Pacific Region (San Francisco) is:

- Part of the National Archives and Records Administration (NARA), the Federal agency that, by law, preserves and provides access to permanently valuable, noncurrent Federal records with historical, legal, or fiscal value.
- One of 15 NARA facilities where the public has access to Federal archival records.
- A depository and center for research in historical records from Federal agencies and courts in northern and central California, Hawaii, Nevada (except Clark County), the Pacific Trust Territory, and American Samoa.
- A center for genealogical research.
- A sponsor of programs that educate the public about archives, history, genealogy, and related subjects.
- A partner with colleges and universities, historical and genealogical societies, museums, and other archives.
- A host for student interns, school groups, and others who want to learn more about archives.
- A national resource in a local setting.

We have:

- More than 55,000 cubic feet of historical records dating from the 1850s to the 1970s, among them photographs, maps, and architectural drawings, created or received by more than 100 Federal agencies, including Federal courts.

We serve:

- Anyone who needs historical information created or received by the Federal Government—historians, genealogists, lawyers, scholars, Government officials, environmentalists, students, and others.

Our records are:

- Diverse in content, covering agriculture, migrant labor, Mexican and Spanish land grants, tribal history, fortifications, merchant seamen and vessels, naval facilities, civil engineering, mining, aviation, Chinese exclusion, immigration, labor, civil rights, ethnic history, African Americans in war industry, the home front during the World Wars, atomic energy, national forests and parks, natural resources, and public lands.
- Filled with the names of notable places and people, among them Alcatraz Penitentiary, Angel Island, Pearl Harbor, the San Francisco Mint, and Yosemite National Park; physicist Luis Alvarez, labor leader Harry Bridges, gangster Al Capone, Iva Togura D'Aquino ("Tokyo Rose"), aviator Amelia Earhart, Communist Party leader Charles Fujimoto, George "Machine Gun" Kelly, Mickey Mouse, engineer John Reber, Chinese leader Sun Yat Sen, clothing manufacturer Levi Strauss, and Robert "Birdman of Alcatraz" Stroud.

- Unique evidence of the impact of Federal policies and programs in parts of California, Hawaii, Nevada, and the Pacific Ocean area.

If you plan to do research in original records:

- Call before visiting to assure that records are available—650-238-3501.
- Bring identification such as a driver's license, passport, or student ID so that we can issue you a researcher's card.
- Plan on leaving your personal belongings in a locker. Laptop computers are permitted.

Our microfilm holdings are:

- **Of genealogical interest**—Federal population censuses for all States, 1790–1930; censuses listing Native Americans in California and Nevada, and censuses taken in American Samoa; maritime records for San Francisco and other ports; military service and pension records; bounty land warrant applications.
- **Of general historical interest**—Territorial papers; the Mathew Brady Collection of Civil War photographs; German records captured at the end of World War II; records of U.S. diplomatic missions, the Revolutionary and Civil Wars, the Government's administration of Indian affairs, and the U.S. Supreme Court; the proceedings of the Nuremberg Trials; and documentation of the Axis Powers' looting of assets, 1933–45.

If you plan to do microfilm research:

- We offer free access to some fee-based genealogical websites at public access computers.
- Expect to use our self-service microfilm research room with the aid of volunteers and staff.
- Because research is time-consuming, you may need to visit more than once.

Prepare for your visit by reviewing our web site:

- Our home page ~ www.archives.gov/pacific/san-francisco
- NARA home page ~ www.archives.gov
- Basics for researchers ~ www.archives.gov/research/start
- Guide to our archival holdings ~ www.archives.gov/pacific/san-francisco/finding-aids/holdings.html
- NARA-wide guide to archival holdings ~ www.archives.gov/research/arc
- NARA-wide guide to microfilm holdings ~ www.archives.gov/research/order/orderonline.html

We welcome your inquiries:

- *Address:* NARA's Pacific Region (San Francisco)
1000 Commodore Drive, San Bruno, California 94066-2350
E-mail: sanbruno.archives@nara.gov
Phone: 650-238-3501 *Fax:* 650-238-3510

We welcome your visit:

- Weekdays, 8 a.m. to 4 p.m. For any additional hours, call or check our web site.
- Closed weekends and Federal holidays.

We are located:

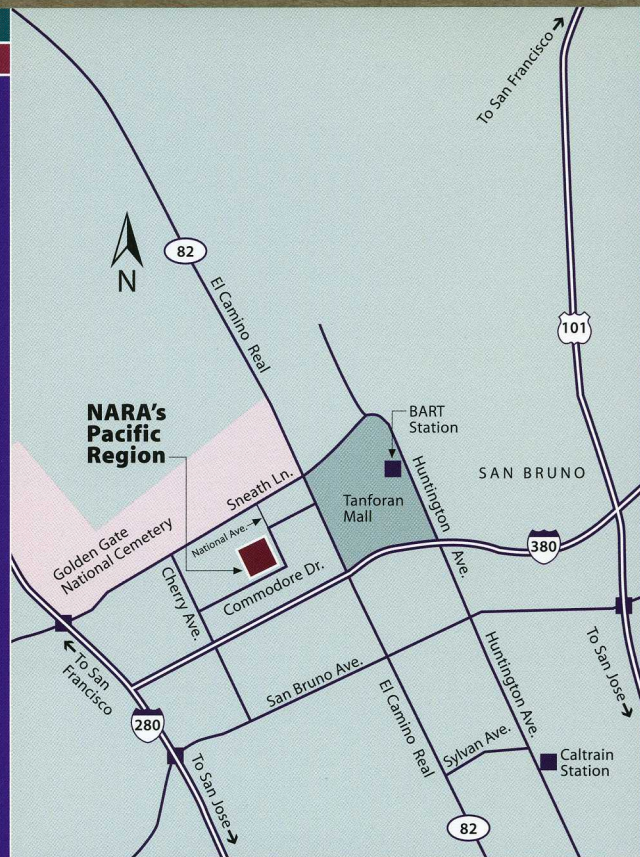
- 12 miles south of San Francisco in the Leo J. Ryan Memorial Federal Building.
- **By Car from San Francisco** — South on Highway 101, exit at San Bruno Ave. West. Drive west for 2 miles, crossing El Camino Real to Cherry Ave. Turn right on Cherry and go north 3 blocks (just past the I-380 overpass), then turn right on Commodore Dr. for 200 yards. The entrance is on your left. ■ **OR** — South on I-280, exit at Sneath Ln. Go east on Sneath to the second traffic light. Turn right on Cherry Ave., then left on Commodore Dr. for 200 yards. The entrance is on your left.
- **By Car from the South** — Exit Highway 101 at San Bruno Ave., drive west for 2 miles, crossing El Camino Real to Cherry Ave. Turn right on Cherry and go north 3 blocks (just past the I-380 overpass), then turn right on Commodore Dr. for 200 yards. The entrance is on your left. ■ **OR** — Exit I-280 at San Bruno Ave., drive east for 1 block. Turn left on Cherry Ave. and go north 3 blocks (just past the I-380 overpass), then turn right on Commodore Dr. for 200 yards. The entrance is on your left.
- **By Public Transportation** — ■ **Caltrain** — The archives is over a mile from the San Bruno station. For route and schedule information, call Caltrain at 800-660-4287 or visit www.caltrain.com. From the north end of the San Bruno station (481 Huntington), go west on Sylvan Ave. to El Camino Real. Go north on El Camino (1 mile) to the main entrance road for Tanforan Mall. Go west across El Camino to Commodore Dr. Continue west on Commodore around two curves about 1/8 mile. The entrance is on your right. ■ **BART** — The archives is about a 1/2 mile from the San Bruno BART station. For fares and schedules visit www.bart.gov. From the station, follow Huntington Ave. north then west to Sneath Ln. Continue west on Sneath to El Camino Real. Turn left (south) onto El Camino (away from Golden Gate National Cemetery) a block to Commodore Dr. Turn right on Commodore, and follow it around two curves about 1/8 mile. The entrance is on your right.
- **SamTrans** — SamTrans buses run north and south on El Camino Real, stopping at the corner of Sneath Ln. and El Camino. Call 800-660-4287 or 510-817-1717, or visit www.samtrans.org.

If you need photocopies:

- Self-service copying of original records may be allowed, depending on the condition of the records.
- For a fee, our staff will make or arrange for copies of records and provide certified copies for legal use.
- You can use self-service copiers for a fee to make paper copies from microfilm.

We encourage you to volunteer:

- To work on archival preservation and other historical records projects.
- To assist genealogical researchers.



The National Archives and Records Administration

ensures, for citizens and Federal officials, ready access to essential evidence that documents the rights of American citizens, the actions of Federal officials, and the national experience. We establish policies and procedures for managing U.S. Government records and assist Federal agencies in documenting their activities, administering records management programs, scheduling records, and retiring noncurrent records. We appraise, accession, arrange, describe, preserve, and provide access to the essential documentation of the three branches of Government; manage the Presidential Libraries system; and publish the laws, regulations, and Presidential and other public documents. We also administer the Information Security Oversight Office, which manages Federal classification and declassification policies, and the National Historical Publications and Records Commission, which makes grants nationwide to help nonprofit organizations identify, preserve, and provide access to materials that document American history.

Archival Holdings at NARA's Pacific Region (San Francisco) include records of:

Accounting Office, General	Record Group 411
Adjutant General's Office, 1917-	.RG 407
Agricultural Economics, Bureau of	.RG 83
Agricultural Engineering, Bureau of	.RG 8
Agricultural Marketing Service	.RG 136
Agricultural Research Service	.RG 310
Agriculture, Office of the Secretary of	.RG 16
Alien Property, Office of	.RG 131
American Revolution Bicentennial Administration	.RG 452
American Samoa, Government of	.RG 284
Army Air Forces	.RG 18
Army Coast Artillery Districts and Defenses, U.S., 1901-1942	.RG 392
Army Commands, U.S., 1942-	.RG 338
Army Continental Commands, U.S., 1821-1920	.RG 393
Army Staff	.RG 319
Atomic Energy Commission	.RG 326
Attorneys, U.S.	.RG 118
Capital Issues Committee	.RG 158
Chemical Warfare Service	.RG 175
Civil Service Commission, U.S.	.RG 146
Civilian Defense, Office of	.RG 171
Coast and Geodetic Survey	.RG 23
Coast Guard, U.S.	.RG 26
Community Services Administration	.RG 381
Comptroller of the Currency, Office of the	.RG 101
Cooperative State Research Service	.RG 164
Courts of Appeals, U.S.	.RG 276
Customs Service, U.S.	.RG 36
Defense Transportation, Office of	.RG 219
District Courts of the United States	.RG 21
Education, General Records of the Office of	.RG 441
Education, Office of	.RG 12
Employment and Training Administration	.RG 369
Energy, Department of	.RG 434
Engineers, Office of the Chief of	.RG 77
Entomology and Plant Quarantine, Bureau of	.RG 7
Environmental Protection Agency	.RG 412
Fair Employment Practice, Committee on	.RG 228
Farm Credit Administration	.RG 103
Farmers Home Administration	.RG 96
Federal Aviation Administration	.RG 237
Federal Communications Commission	.RG 173
Federal Deposit Insurance Corporation	.RG 34
Federal Housing Administration	.RG 31
Federal Energy Regulatory Commission	.RG 138
Federal Highway Administration	.RG 406
Federal Mediation and Conciliation Service	.RG 280
Federal Property Resources Service	.RG 291
Federal Supply Service	.RG 137
Fish and Wildlife Service, U.S.	.RG 22
Food Administration, U.S.	.RG 4
Foreign Assets Control, Office of	.RG 265
Forest Service	.RG 95
Fuel Administration, U.S.	.RG 67
General Services Administration	.RG 269
Geological Survey, U.S.	.RG 57
Heritage Conservation and Recreation Service	.RG 368

Housing and Urban Development, Department of	.RG 207
Housing Expediter, Office of the	.RG 252
Immigration and Naturalization Service	.RG 85
Indian Affairs, Bureau of	.RG 75
Indian Health Service	.RG 513
Interagency Committees and Councils	
Coordinating Water Use Programs	.RG 315
Interior, Office of the Secretary of the	.RG 48
Internal Revenue Service	.RG 58
Labor, Department of	.RG 174
Land Management, Bureau of	.RG 49
Marine Corps, United States	.RG 127
Marine Inspection and Navigation, Bureau of	.RG 41
Maritime Administration	.RG 357
Maritime Commission, United States	.RG 178
Marshals Service, United States	.RG 527
Mines, U.S. Bureau of	.RG 70
Mint, U.S.	.RG 104
National Aeronautics and Space Administration	.RG 255
National Labor Relations Board	.RG 25
National Oceanic and Atmospheric Administration	.RG 370
National Park Service	.RG 79
National Recovery Administration	.RG 9
National Resources Planning Board	.RG 187
National War Labor Board (World War II)	.RG 202
National Youth Administration	.RG 119
Natural Resources Conservation Service	.RG 114
Naval Districts and Shore Establishments	.RG 181
Naval Operating Forces	.RG 313
Occupational Health and Safety Administration	.RG 100
Ordnance, Office of the Chief of	.RG 156
Petroleum Administrative Board	.RG 232
Post Office Department	.RG 28
Price Administration, Office of	.RG 188
Price Stabilization, Office of	.RG 295
Prisons, Bureau of	.RG 129
Provost Marshal General's Bureau (Civil War)	.RG 110
Public Buildings Service	.RG 121
Public Health Service, 1912-1968	.RG 90
Public Housing Administration	.RG 196
Public Roads, Bureau of	.RG 30
Quartermaster General, Office of the	.RG 92
Reconstruction Finance Corporation	.RG 234
Scientific Research and Development, Office of	.RG 227
Selective Service System (World War I)	.RG 163
Selective Service System, 1940-	.RG 147
Shipping Board, U.S.	.RG 32
Signal Officer, Office of the Chief	.RG 111
Surgeon General (Army), Office of the	.RG 112
Territories, Office of	.RG 126
Transportation, Office of the Chief of	.RG 336
Treasury, Department of	.RG 56
Veterans Administration	.RG 15
Wage and Hour Division	.RG 155
Wage and Salary Stabilization Boards	
of the Economic Stabilization Agency	.RG 293
War Assets Administration	.RG 270
War Manpower Commission	.RG 211
Weather Bureau	.RG 27
Work Projects Administration	.RG 69
Donated Materials Group	

Regional Archives

Pacific Region

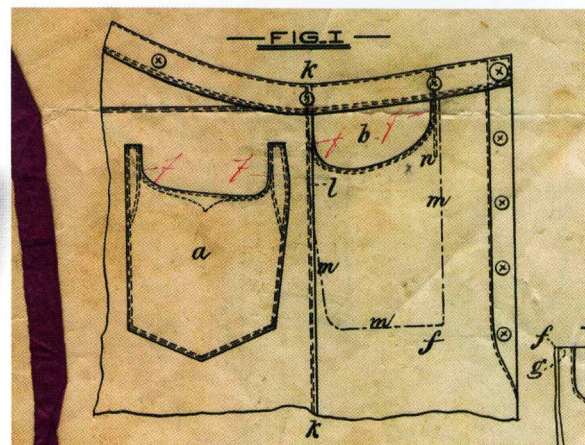
San Francisco



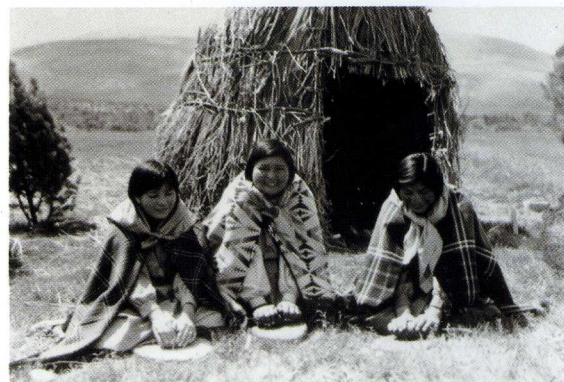
Boy with sign promoting wartime food conservation, Calexico, CA, ca. 1917. RG 4



Depositions of Young Pong and Sam Lam, merchants and residents of Santa Rosa, 1895, 1908. RG 85



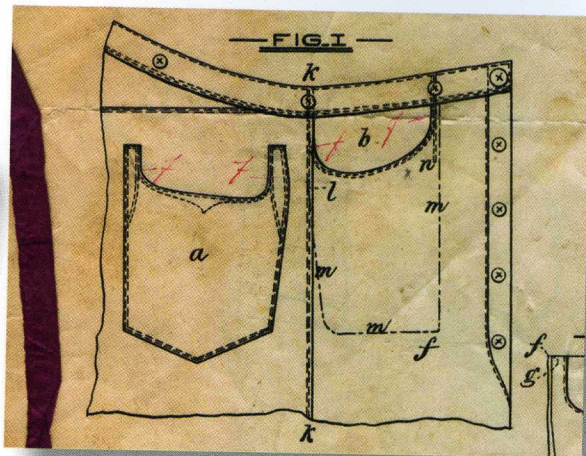
Patent drawing of jeans pocket, 1876. RG 21



Washoe women near Carson City, NV, 1930s. RG 75



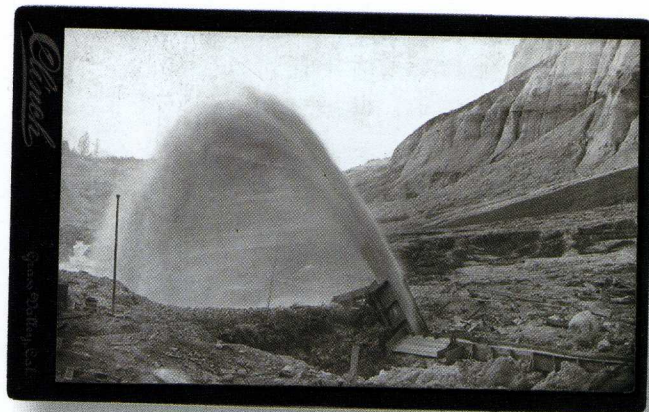
Boy with sign promoting wartime food conservation, Calexico, CA, ca. 1917. RG 4



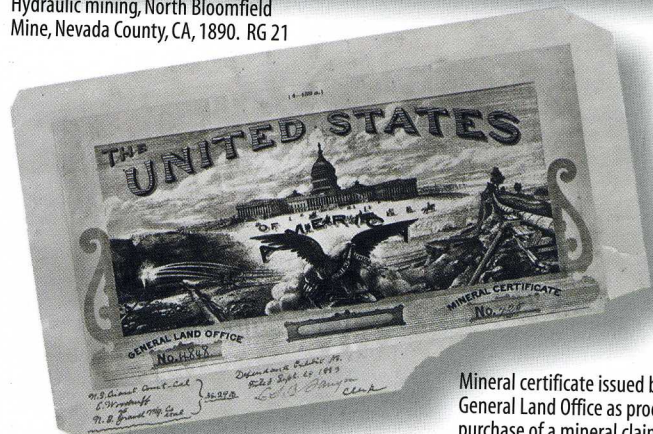
Patent drawing of jeans pocket, 1876. RG 21



Washoe women near Carson City, NV, 1930s. RG 75



Hydraulic mining, North Bloomfield Mine, Nevada County, CA, 1890. RG 21



Mineral certificate issued by the General Land Office as proof of purchase of a mineral claim, ca. 1880. RG 21



Entrance to Golden Rule Mine, Tuolumne County, CA, ca. 1890. RG 104



The family of Lim Lip Hong, ca. 1914. RG 85



San Francisco Mint, ca. 1890. RG 104



Destruction outside the San Francisco Mint after the 1906 earthquake and fire. RG 104



Shipfitters in the engine room of the USS Nereus, Mare Island, CA, 1951. RG 181



Dry dock crew, Mare Island, CA, 1944. RG 181

PETITION
 12/3/43
 TO MR. EDWARD HUTCHINSON, AND/OR THE PRESIDENT'S COMMITTEE ON FAIR EMPLOYMENT PRACTICES.
 We, the undersigned Negro craftsmen, petition your office to the end that our various journeyman be allowed equal advancement, and opportunities as that of the average American in Richmond Shipyard No. 1.
 Respectfully Submitted,
 NAMES ADDRESS
 Lina Anderson 584 Spring Street, Richmond, Calif.
 Woodrow D. Anderson Canal Street, Richmond, Calif.
 P. Anderson 1518 311 1/2 St. Rich.
 J. Anderson 1240 1/2 St. Rich.
 W. B. Anderson 1352 - 33rd Street, Oakland, Cal.
 J. B. Anderson Richmond, Cal.
 J. B. Anderson 15-11 - 77th St. Berkeley, Cal.
 J. B. Anderson 1511 - 7th St. Oakland, Cal.
 J. B. Anderson 1240 1/2 St. Rich.
 Paul Ray Kagan Canal Street, Richmond, Cal.
 James Williams 2547 Sutter St. Berkeley, Cal.
 J. B. Anderson 1511 - 7th St. Berkeley, Cal.
 J. B. Anderson 1511 - 7th St. Berkeley, Cal.

Petition submitted by African-American craftsmen to the Committee on Fair Employment Practice, 1943. RG 228



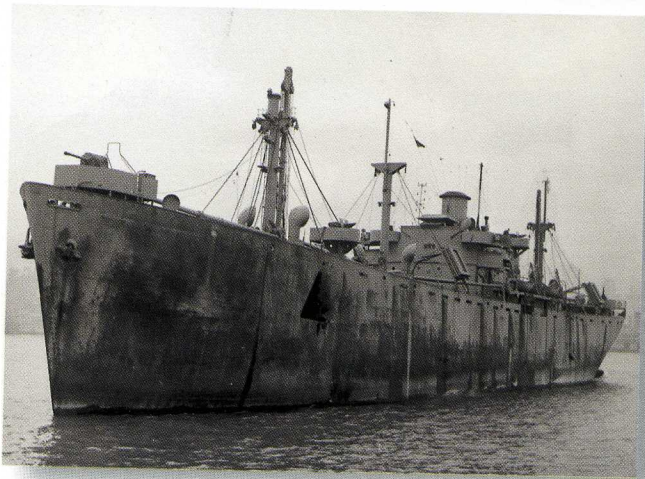
Aftermath of Japanese attack on Pearl Harbor, December 7, 1941. RG 21



A family practices an air raid drill, ca. 1942. RG 171



Convoy of soldiers, Wawona Tunnel Tree, Yosemite National Park, CA, 1945. RG 79



NDL-16-Pa
(SC)ALG-3/281
Serial 0138

~~CONFIDENTIAL~~

From: Commandant Twelfth Naval District,
Chief of Naval Operations. 11 January 1945

Subject: S.S. JEREMIAH M. DAILY, enemy attack on.

Reference: (a) DMI TT, to DIO, 12ND, received 01/17/45 PWY Jan 1945.
(b) DIO, 12ND, restr. dispatch to DMI, 04/21/45 Jan 1945.

Enclosure: (a) Summary of statements by survivors of enemy attack on subject vessel.
(b) Four photographs of damage to subject vessel.

- In compliance with Reference (a), Enclosure (A), a summary of the statements obtained from survivors of an enemy airplane attack on subject vessel, is forwarded herewith. Four photographs of the damage sustained by subject vessel in the attack are forwarded for information as Enclosure (B).
- Reference (b) set forth names of all survivors, missing, hospitalized in forward areas, and known dead as a result of the attack.
- Recovered parts of the attacking enemy plane are being forwarded to U. S. Naval Air Station, Captured Enemy Aircraft Equipment Unit, Anacostia, D. C.

J. H. EVERSON
By direction of the Commandant

- 10 Comd.
- 01 C. of S.
- 02 Legal
- 03 Secy.
- 100 Per.
- 101 Plan
- 14 Port Dir.
- 18 Insp.
- 19 Insp.
- 20 D.C.C.
- 22 Pub. Rel.
- 23 D.M.C.
- 40 Div.

Above: SS Morrison R. Waite after attack by Japanese suicide planes, Philippine Islands, 1945. RG 181

Left: Cover memo accompanying statements by survivors of enemy attack on SS Jeremiah M. Daily, Philippine Islands, 1945. RG 181