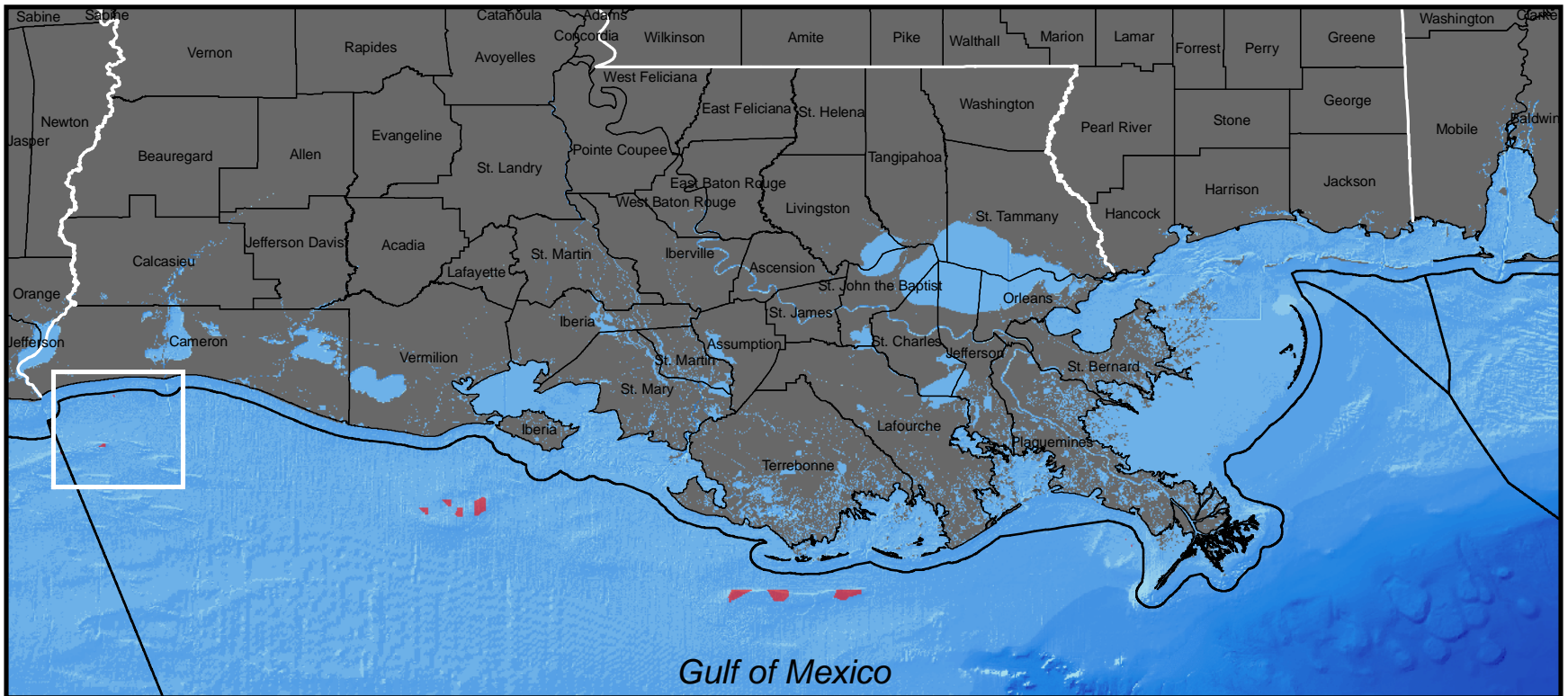




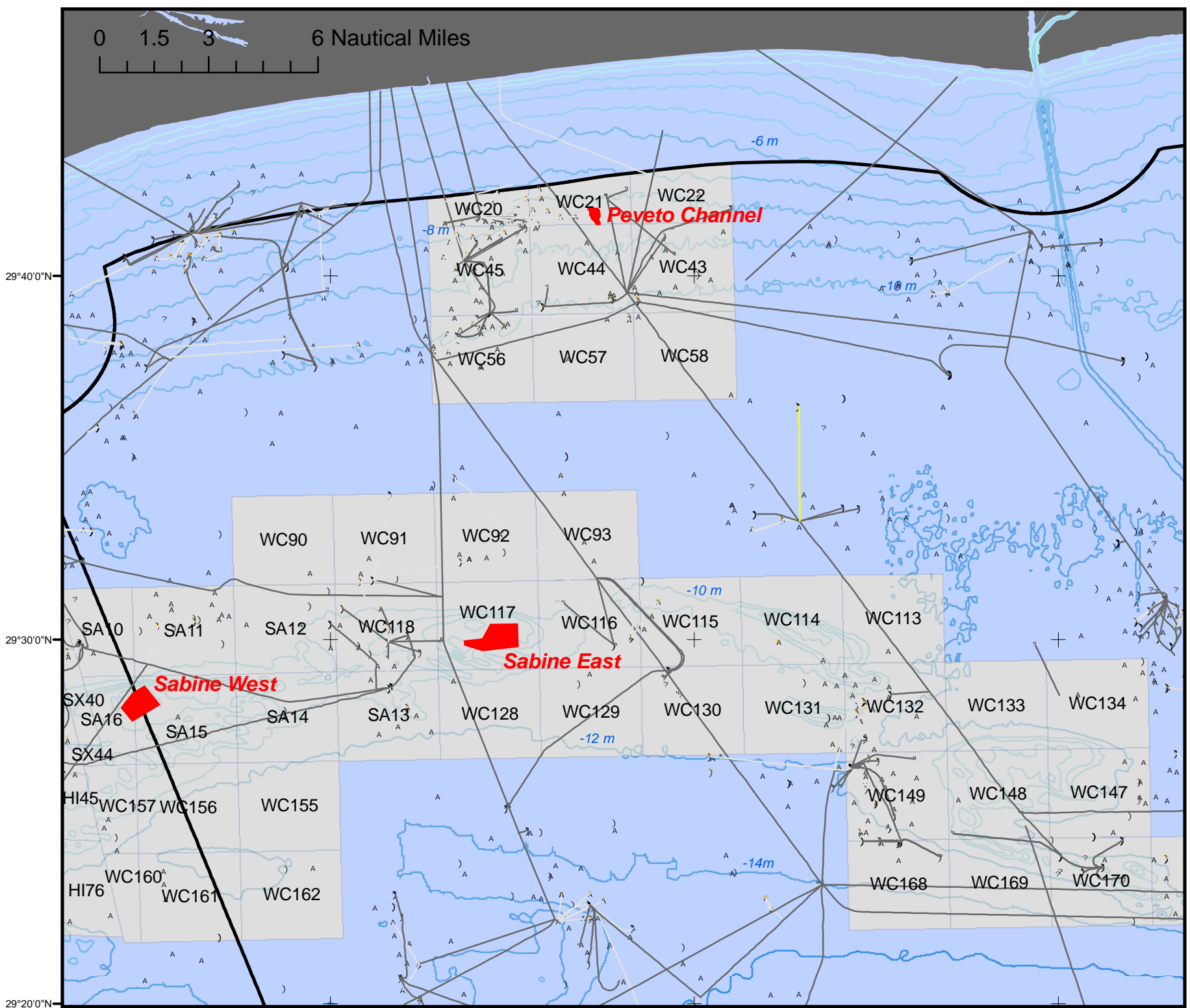
Gulf of Mexico Region
Significant Outer Continental Shelf Sediment Resources

1:3,000,000



Sabine Pass and West Cameron Areas (Sabine Bank and Peveto Channel)

1:250,000



Geographic Coordinate System, North American Datum of 1983

Legend	
■	Significant OCS Sediment Resources
■	ITL Sand and Gravel Blocks
—	Submarine Cables
—	Umbilicals
—	Active Pipelines
—	Proposed Pipelines
—	Abandoned Pipelines
•	Active and Proposed Platforms
•	Destroyed Platforms
•	Removed Platforms
)	Well Tops
^	Perm. Abandoned Wells
?	Temp. Abandoned Wells

The Notice to Lessees and Operators (NTL) concerning Significant Outer Continental Shelf (OCS) Sediment Resources in the Gulf of Mexico recommends avoidance of significant OCS sediment resources to the maximum extent practicable during operations involving structures, drilling rigs, pipelines, umbilicals, and/or cables. Gulf of Mexico Region NTLs are available on the internet at www.gomr.mms.gov. MMS does not warrant the accuracy of this map or assume any responsibility or liability for any reliance thereon. This map is not intended for navigational purposes or as a legal document for leasing purposes.

Last updated 10/9/2008