

ELIZABETH EASON  
ARCHITECTURE LLC



## Company Profile



# Our company



**Elizabeth Eason** AIA,  
LEED-AP BD&C + Homes



**Andrew Godwin** assoc.  
AIA, LEED-AP



**Monika Miller** LEED-AP



**Matthew Kellogg** LEED  
Green Associate

# What we do

Full Architectural/Engineering Services

- Government Projects
- Commercial
- Residential

Historic Renovation

Sustainable Design

Planning

LEED Consulting

# We are

Woman Owned Small Business

HUBZone Certified



# Our work – LEED Consulting

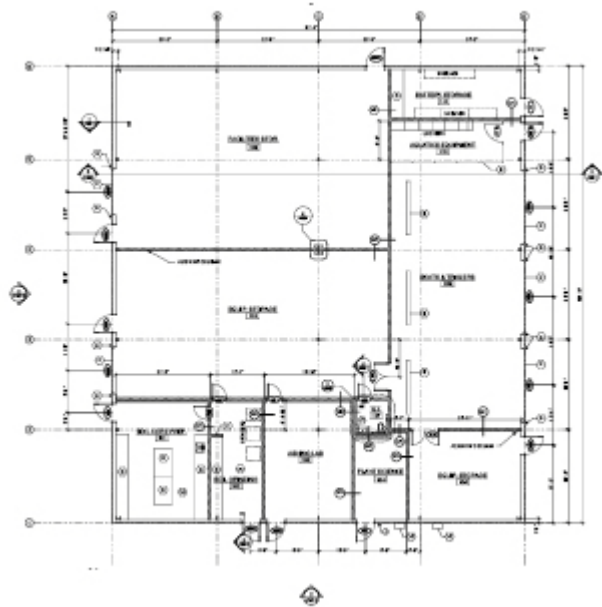
## West End Research Support Facility

Oak Ridge National Laboratory

Size: 9,200 SF

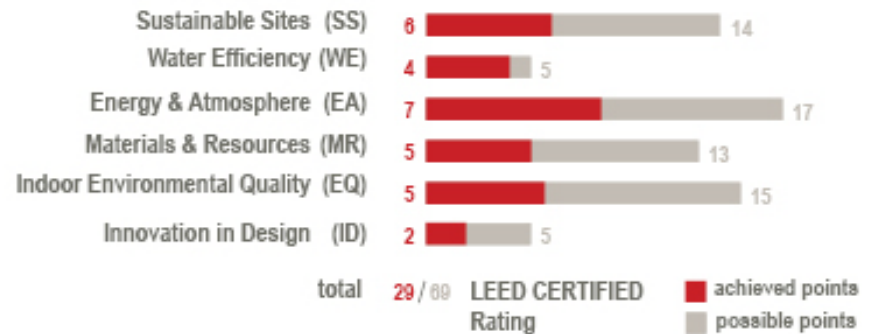
Completion date: 2008

Elizabeth Eason Architecture, LEED Consultant to design-build team



### West End Research

### LEED-NC point distribution



# Our work – LEED Consulting

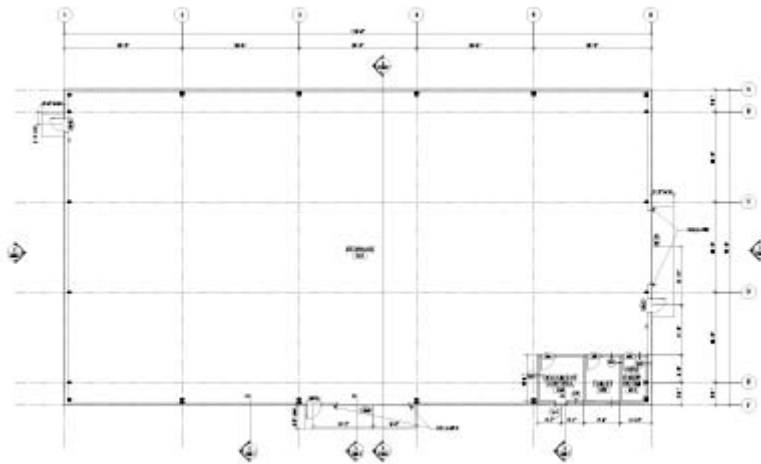
## Melton Valley Warehouse

Oak Ridge National Laboratory

Size: 9,100 SF

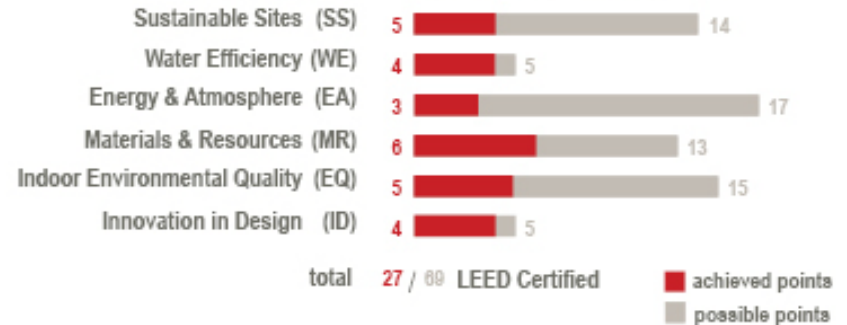
Completion date: 2008

Elizabeth Eason Architecture, LEED Consultant to design-build team



### Melton Valley

### LEED-NC point distribution



Our work

# WROL Building Tenant Office Build-out

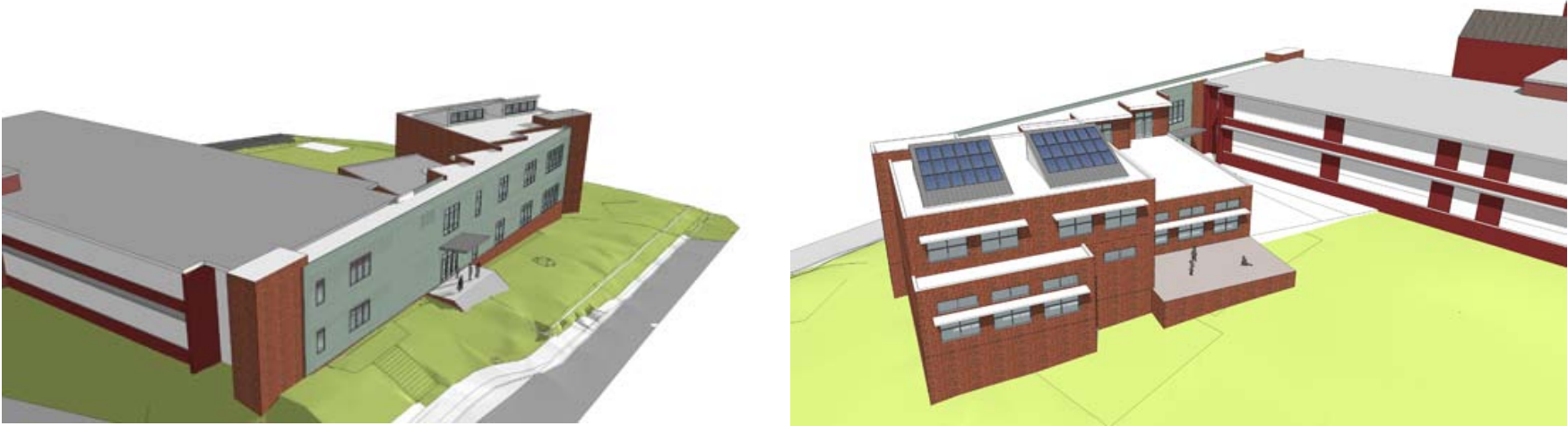
Knoxville, TN – anticipating LEED CI Gold Rating



Our work

# Belle Morris Elementary Green Addition

Knoxville, TN





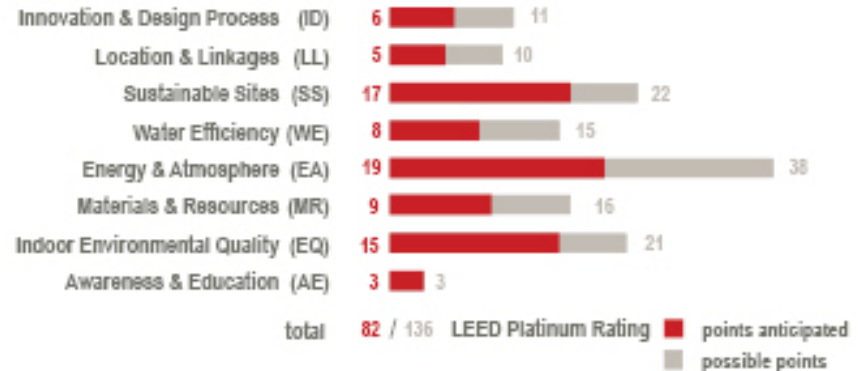
Our work

# Blueberry Ridge Senior Housing

Knoxville, TN – anticipating **LEED Homes** Platinum Rating



## Blueberry Ridge LEED for HOMES point distribution





# Our work – LEED Consulting

## Communications Training Complex

Chattanooga Tennessee

241st Engineering and Installation Squadron Tennessee Air National Guard

Size: 30,000 SF

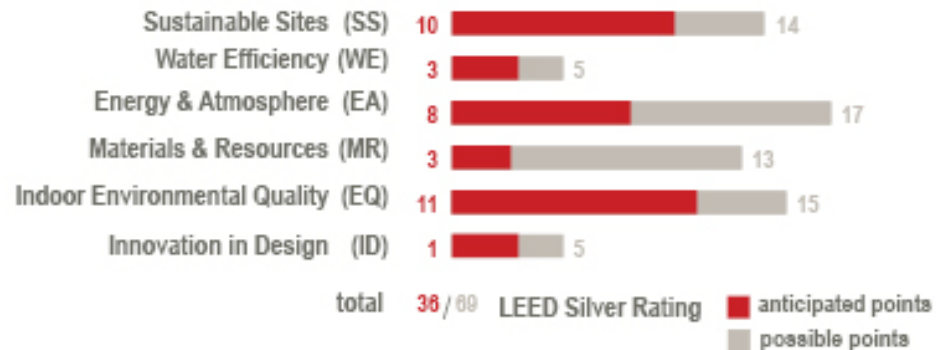
Completion date: TBD

Elizabeth Eason Architecture, LEED Consultant to design team



### 241st Communications Training Complex

### LEED-NC point distribution



# Our work – LEED Consulting

## Squadron Operations Facility

Alcoa Tennessee

134th Air Refuelling Wing Tennessee Air National Guard

Size: 26,900 SF

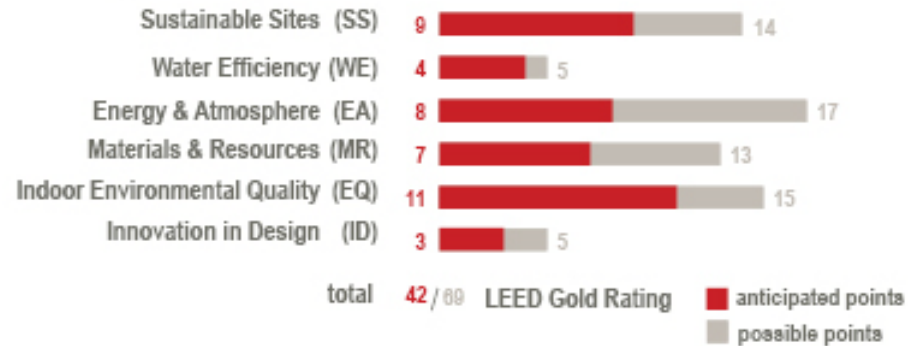
Completion date: TBD

Elizabeth Eason Architecture, LEED Consultant to design team



### 134th Squadron Operations

### LEED-NC point distribution



Our work

# Tomato Head Maryville

Maryville, TN



Our work

# Pellissippi Place Regional Technology Park Entrance

Maryville, TN





Our work

# Vestal Redevelopment Plan

Knoxville, TN



# Member Organizations



ELIZABETH EASON  
ARCHITECTURE LLC



524 S. Gay St Suite 301  
Knoxville, TN 37902

t. 865.525.9066

[elizabeth@EEArchitecture.com](mailto:elizabeth@EEArchitecture.com)

[www.EEArchitecture.com](http://www.EEArchitecture.com)