

# eSubmitter Quick Guide

The eSubmitter software enables the electronic submission of regulatory information to FDA. At this time, eSubmitter may be used to submit the following to CDRH: Radiological Health Reports and Correspondence, OIVD 510(k)s, and the MedWatch 3500A form for medical device adverse event reports, to CBER: Biologics Licensing Applications for the CBER Pilot Program, to CTP: Tobacco Establishment Registration, Product Listing and Health Data submissions, and to CVM: All pre-market ONADE submissions for New Animal Drug Applications, Abbreviated New Animal Drug Applications, Investigational New Animal Drug Files, Generic Investigational New Animal Drug Files, Veterinary Master Files, and General Correspondence Files. This quick guide will instruct you on the basics for using the application as each Center's application differs slightly. For more specific information, please refer to the full length [eSubmitter User Manual](#).

## Inside this guide:

Access the Software	<a href="#">1</a>
Getting Started	<a href="#">1</a>
Set User Preferences	<a href="#">2</a>
Create a New Submission	<a href="#">3</a>
Open an Existing Submission	<a href="#">4</a>
Enter Submission Information	<a href="#">4</a>
Save Submission Entries or Changes	<a href="#">4</a>
Close and Reopen an Existing Submission	<a href="#">5</a>
Complex Question Types	<a href="#">5</a>
Check Completeness of Submission	<a href="#">12</a>
Package Submission Files	<a href="#">13</a>
User Support	<a href="#">16</a>

= Important Tip

= Important Warning

### eSubmitter Icon Directory:

- = Required Response
- = Helpful Tip
- = Information Message
- = Error Message
- = Note Message
- = Stop Message
- = Warning Message
- = Confirmation Message
- = Critical Required Response

## Access the Software

To start up the eSubmitter application, follow the instructions below.

- Go to the **Start** menu and select **Programs > FDA Submission Software > eSubmitter**.
- You will see a *Registration Dialog* box (as shown to the right).
- Click to continue the registration process.  
Or, click to register at another time.  
If you click , you will see a *Registration Dialog* box. If you choose to register, move forward through the wizard, and enter all requested information.
- The registration wizard will prompt you to check results of the registration. If there was a problem generating your email, select the radio button **No there was a Problem** and follow the instructions provided. If your email was sent, select **Yes the Email was sent successfully**.
- Click when you are finished. The dialog box will close.



## Getting Started

The *Welcome Screen* will be displayed (as shown below). The contents and tools available in the *Welcome Screen* are described in the table on page 2.

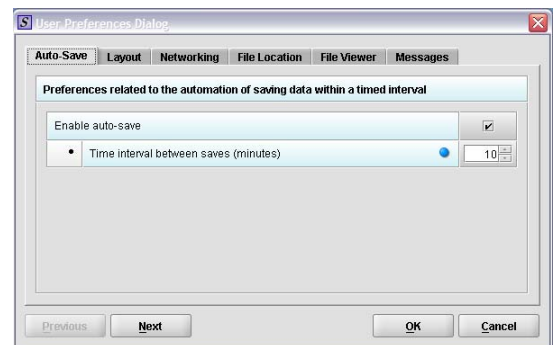
The contents of the *Welcome Screen* are described in the table below.

Function	Icon	Description
Create New Submission		Allows you to create a new submission entry. The <i>New Submission Data Dialog</i> box will appear. See section <i>Creating a New Submission</i> for more detailed information.
Open an Existing Submission		Allows you to open an existing submission. The <i>Open Submission Data Dialog</i> box will appear. See section <i>Opening an Existing Submission</i> for more detailed information.
eSubmitter Quick Guide		Launches the eSubmitter Quick Guide. If the Quick Guide does not contain the information you are searching for, see the full length <a href="#">eSubmitter User Manual</a> .
Exit Application		Closes the eSubmitter application.
Help Topics		Displays the <i>Help Menu</i> , which provides instructional information and support for utilizing the eSubmitter application.
Forward Navigation Arrow		This arrow allows you to move forward through the <b>Message Tabs</b> .
Backward Navigation Arrow		This arrow allows you to move backwards through the <b>Message Tabs</b> .
Collapse/Expand Arrows		Allows you to collapse and expand the <b>Menu Options</b> portion of the <i>Welcome Screen</i> .
Notification Stars		The yellow stars are intended to notify users when new messages are available. The star appears next to the message tab header with new unread messages.
Category Filter		Allows you to filter the message information to display only generic information or those messages pertaining to a particular program. eSubmitter will remember the selected filter option upon closing and reopening the application.
Mark as Read	<input type="checkbox"/> <b>Mark as Read?</b>	This checkbox enables you to indicate which message tabs have been read. Mark this checkbox to remove the yellow star shown next to the tab header. Unmark this checkbox to make the yellow star on the applicable tab header reappear.

## Set User Preferences

eSubmitter is initially installed with default preferences that can be altered at any time.

- To view or update your setup preferences, select **File > Preferences**.
- The *User Preferences Dialog* box appears as shown to the right. Each category in the *User Preferences Dialog* box is explained briefly below.



**Auto Save:** Allows automatically saves of reports while you work. You can also set the save interval which has a default interval setting of 10 minutes.

**Layout:** Allows you to set whether you want eSubmitter to open reports in the **Simple Layout** or **Expert Layout** when you start up the application. At default, eSubmitter opens reports in the **Simple Layout**.

**Networking:** Allows you to set file locking when using the software on a network. The application is primarily designed for use by one user at a time. However, in an effort to help support those that wish to run the application from a network and want to prevent users from accidentally over-writing the work of another, a simple file locking strategy has been incorporated. By enabling file locking, a user will be warned if the file that they are attempting to open is currently in use by another. At default, eSubmitter opens without file locking.

**File Location:** Allows you to change the location where your report data files are stored when saved and the location where files are generated when output (e.g., reports and packaged submissions).

**File Viewer:** Allows you to identify the application that you will use as your PDF viewer. (Generally, Adobe Acrobat is used as the application for viewing PDFs.)


**Messages:** Allows you to indicate whether you will receive missing data message when leaving a screen.



For more detailed instructions on setting your user preferences, see section 2.2 of the [eSubmitter User Manual](#).

## Create a New Submission

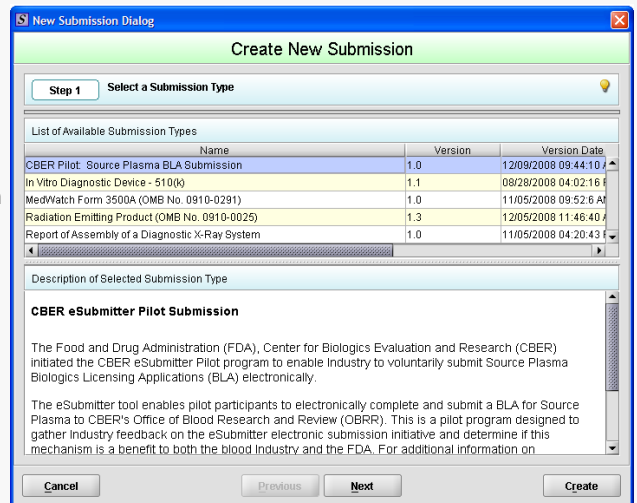



Follow the next steps to create a new submission from scratch:

1. The eSubmitter application should be open on your computer desktop. If it is open, and you see the **Welcome Screen**, go to step 2. (If it is not open, open the application first by following the instructions in *Access the Software*.)
2. Click the **Create New Submission** button from the **Menu Options**.  
Or you may select **File > New** or, click the **New Report** icon (  ) on the **Tool Bar**. The *New Submission Dialog* box is displayed (as shown to the right).

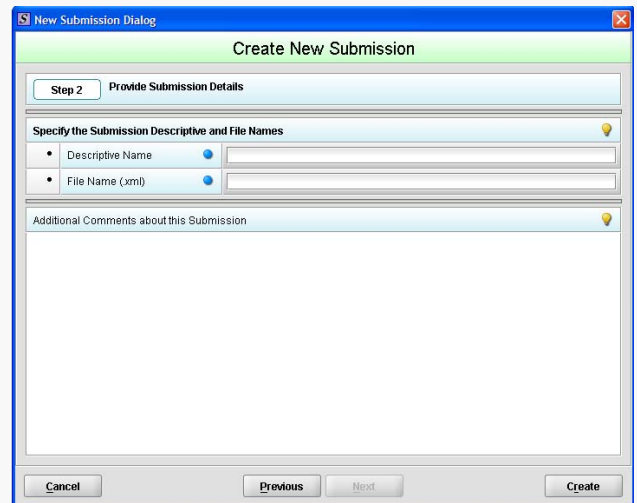
 Click on the **yellow light bulb** (  ) to view helpful hints.


3. **Step 1. Select a Submission Type.** The *New Submission Dialog* wizard is comprised of two parts. The first section (top portion of the window) requires that you select which **Submission Type** to create. When you click on the **Submission Type**, the bottom portion of the window displays information related to the corresponding submission type. (See screen shot to the right.)



4. Once you have selected the **Submission Type**, click  .
5. **Step 2. Provide Submission Details** appears (as shown to the right).

6. Complete the fields in this dialog box as follows:
  - **Descriptive Name** – Enter any descriptive name, as long as it is unique to the submission list and not blank. Use a name that distinctly identifies the report to you. (A required Entry is indicated by the blue dot.)
  - **File Name** – Enter a valid name for the submission data. Use alphanumeric characters. (Required Entry, as indicated by the blue dot.) **File names should not contain more than 100 characters. Do not use symbols when naming the file(s).**
  - **Additional comments** – Enter any additional information about this report (Optional Entry).



7. When you are finished entering all of the information, click  .
8. The first screen of your new blank submission is displayed.
9. The parts of the application window are highlighted in the figure below (shown in **Expert Layout**).




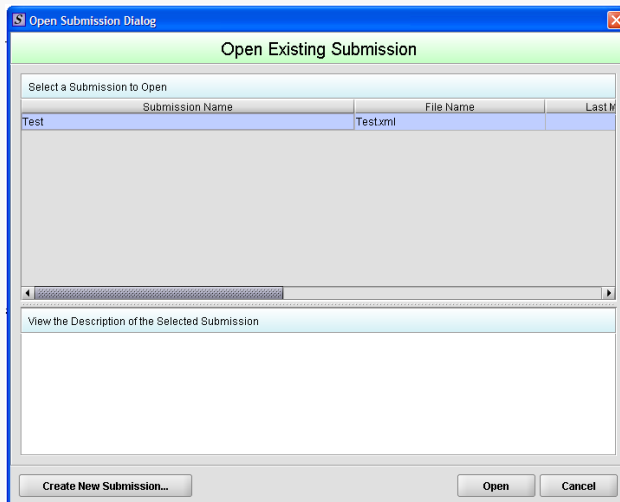
9. You are now ready to complete this submission. Go to *Entering Submission Information*.

## Open an Existing Submission



Follow the next steps to open an existing submission:


1. The eSubmitter application should be open on your computer desktop. If it is open, and you see the **Welcome Screen**, go to step 2. (If it is not open, open the application first by following the instructions in *Access the Software*.)
2. Click the **Open Existing Submission** button from the **Menu Options**. Or you may select **File > Open** or, click the **Open Submission** icon (  ) on the Tool Bar.
3. The *Open Submission Dialog* box will be displayed (as shown to the right).
4. This dialog box allows you to select an existing submission or begin a new one. As you create new reports, they will be shown in this dialog box as a list of all the available submissions with a comments area for viewing additional information on the selected submission. However, if this is the first time that you started up the application after installing the software, the list will be blank.
5. Look at the bottom of the *Open Submission Dialog* box. You will see four option buttons that are described below:
  - **Create New Submission...:** Clicking this button displays the *New Submission Dialog* box, which allows the creation of a new submission report file. See *Create a New Submission*.
  - **Open:** Clicking this button closes the *Open Submission Dialog* box, and opens the selected submission. In addition, double-clicking on a submission or pressing the **Enter** key while a submission is highlighted will also open the submission.
  - **Cancel:** Clicking this button closes the *Open Submission Dialog* box with no changes to the screen.



## Enter Submission Information


### Enter Responses into the Submission


1. The eSubmitter application must be open on your computer desktop, and a submission must be open.
2. Navigate through the submission as follows:
  - If you are in the **Simple Layout**, use the buttons on the button bar to advance to next/return to previous screen.
  - If you are in the **Expert Layout**, use the outline section, and activate each section by double clicking on the section name to load the questions. You may also use the navigation arrows to move forward or to a previous section.
3. Provide a response to the question(s) on the screen (required entries are indicated by the blue dot). The response required depends on the type of question. See *Complex Question Types* for instructions on entering information into the various types.

 If you do not finish entering information into a submission in one session, you may return to it at another time. See *Save Submission Entries or Changes*.

### Save Submission Entries or Changes

While moving through the submission, any changes made to question responses are automatically updated within memory (e.g., the user made a change to a question response, went to another section of the submission, and returned to see that the changes to the response were still in effect). If you have auto-save turned off in **Preferences**, these changes are only saved permanently when you select the **Save** option from the tool bar or **File** menu.

 The software will remind you to save if data has been changed and you are about to perform an operation that would result in losing your changes, such as opening another submission or exiting the application.

1. Click **File > Save** OR
2. Click  on the **Tool Bar**. The submission data has been saved.



To close and exit the application see *Closing and Reopening a Submission*.

## Closing and Reopening an Existing Submission

### To Close a Submission:

- Click **File > Close**. The submission closes and the *Welcome Screen* is displayed.

### To Reopen an Existing Submission:


- Click **File > Open** on the menu bar or  from the *Menu Options Pane*. You see the *Open Existing Submission Dialog* box.
- Click to select (highlight) the submission that you wish to open, and click . The selected report is displayed.

### To Exit the Application:

- To close eSubmitter, click  on the *Menu Options Pane*.

## Complex Question Types

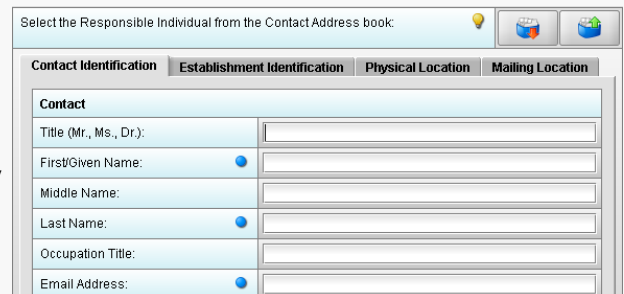
The eSubmitter application uses various question types to capture all the information that is required for a specific submission. Several of the eSubmitter question types are complex in nature. The purpose of this section is to provide a brief overview of all of the various complex question types that are used in the eSubmitter.

 This section describes each of the different complex question types and includes examples of their respective responses. **You may not see all of these types of questions in one particular report.**



**Contact Question Types:** This question type contains various contact related fields that you need to complete.


For this question type, you may enter contact information (first name, last name, etc.) directly into text boxes, or you may copy this information from the **Contact Book**.

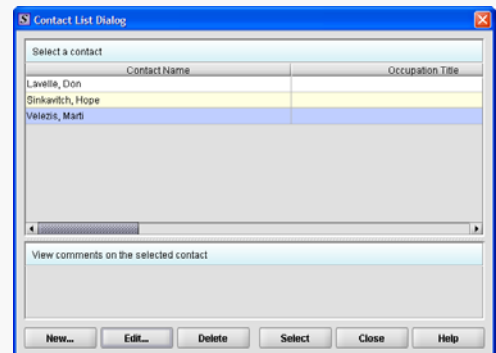
When you enter the information directly (without using the **Contact Book**), the contact information is only saved for the submission. However, you should use the “**Copy To**” **Contact Book** feature if you have already entered data into the field directory and would like to store the information for future use. Copying the information from the **Contact Book** saves time for data entry because the information is automatically copied into the question. Information in the **Address Book** and **Contact Book** require that you only enter data once and reuse it across submissions.



### Copy Information from Contact Book into Contact Question




- Click the **Copy from Contact Book** icon () in the question. The *Contact List Dialog* box is displayed (as shown to the right).
- Click to highlight and select the desired contact.
- Click . The contact information is automatically populated in the different entry areas.

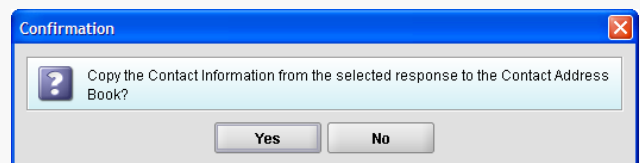
 If the information is not exactly the same, you can edit the data after copying it.




### Copy Information Up from Contact Question into Contact Address Book

If you have already entered data into the field directory and would like to store the information for future use, follow the instructions below to copy it into the **Contact Book**.

- Click the **Copy to Contact Book** icon () in the question. The *Confirmation dialog* box will be displayed (as shown to the right).
- Click  to copy the information to the **Contact Book**. Click  if you do wish to copy the information.
- If you choose to copy the information, a message will appear, stating, “Contact information successfully copied to the Contact Book.” You may now reuse the stored information by copying it from the **Contact Book**.

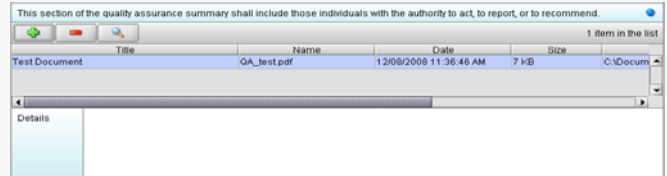


 The **Address Book** feature works similarly to the **Contact Book** described above. To enter and store information in the **Address Book** and/or **Contact Book** for use across submissions, open the book from the **Tools** menu. You may also copy this information into your **Address/Contact Books** directly from questions using the *Copy Information Up* feature described above.

**File Attachment:** This question type allows you to attach a document file as a response. The question may contain a text editor that allows or requires you to type additional narrative to supplement the attachment. In addition, this editor may be an HTML Editor, which allows you to format what you type (bold, underline), run spell check, or insert a table. You may use this area to provide descriptive information or clarification. You may be required to provide the attachment or the descriptive text.


Attaching PDF files requires software capable of viewing and/or printing PDF files (e.g., Adobe Acrobat). The first time a PDF file is attached, the software will prompt you to locate the application within the system that will be used to view/print such files. Once identified, the software will no longer prompt for this information.

To the right is an example of an attachment question with a response entered. eSubmitter allows you to attach files that are PDF, Excel, XML, ZIP, SGML, XPT, MOL, DTD, GIF, TIF, JPG, WMV and AVI files. However, the question itself may be restricted to allow certain file types to be attached (e.g., PDF only or a combination, such as PDF and/or Excel file types only).



**⚠ File names should not contain more than 250 characters. Do not use symbols when naming the files for attachments.** For example, do **not** use slashes (/ \), tildes (~), asterisks (\*), periods (.), brackets [ ], single quotation marks ('), double quotation marks (") or parentheses ( ). Once the file is attached to a question, it can be selected as an attachment to other questions, if appropriate.

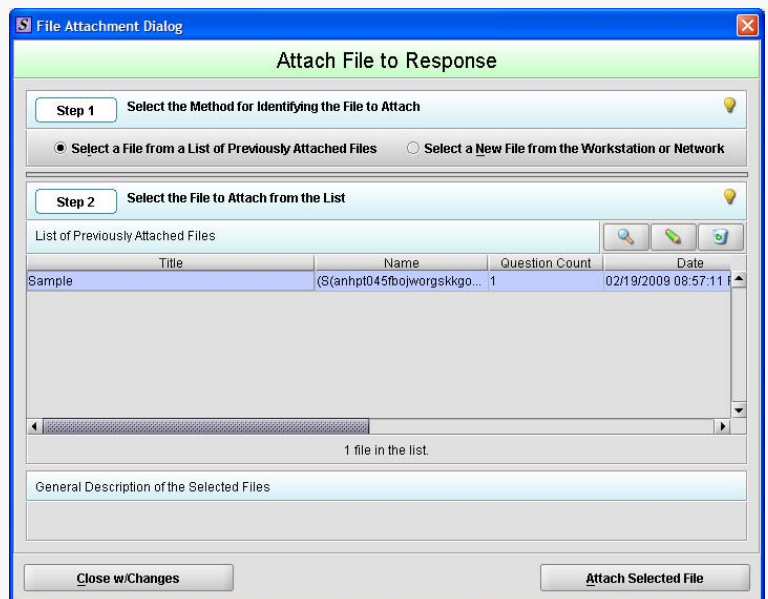
**Attach File to Attachment Question**

1. Click the **Add File** icon (  ) to open the *File Attachment Dialog* (as shown to the right).
2. **Step 1: Select the Method for Identifying the File to Attach.**  
Choose the desired method for selecting the file to attach. The options are:

- Choose a previously attached file from a master list **OR**
- Select a new file from your computer or a network drive that has not been previously attached to the submission.

**🧑‍🎓** The wizard defaults to the method “Select a File from a List of Previously Attached Files” if the master file list contains any files. If there are no files in the master list, it will default to the method “Select a New File from the Workstation or Network”.

If you would like to navigate to a location on your computer and select a new file, click the radio button to change the response in Step 1 to “Select a New File from the Workstation or Network”.




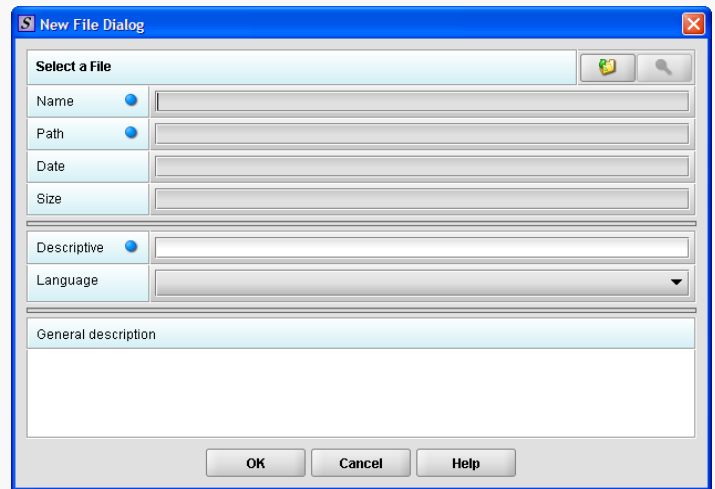
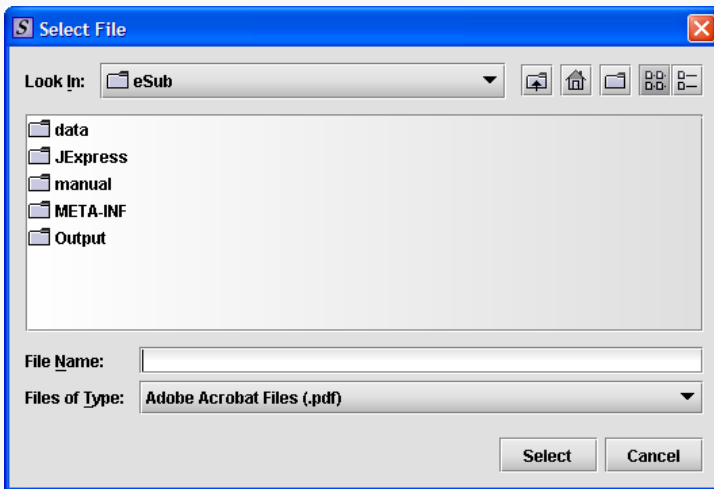
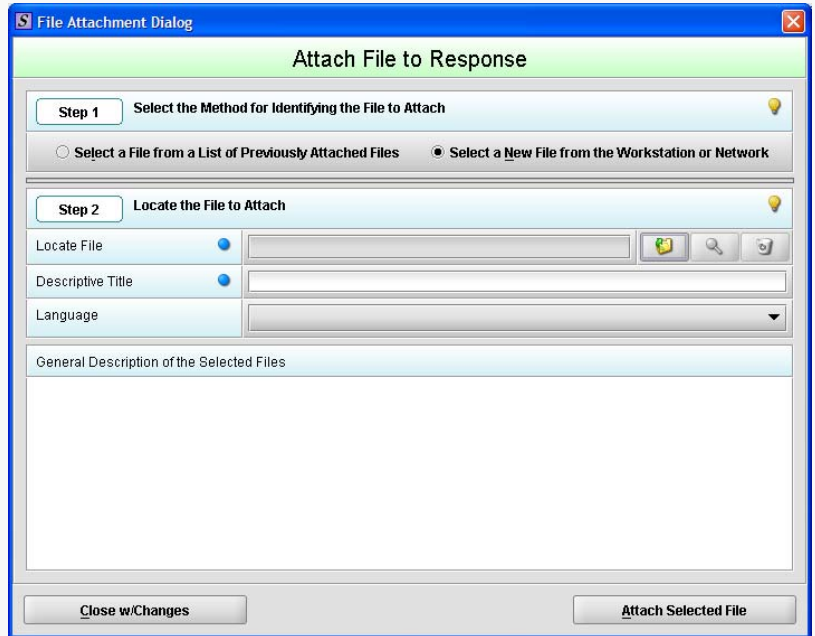
3. **Step 2: Select the File to Attach According to the Method Chosen -- Select a File from a List of Previously Attached Files.** If the file can be located in the list of previously attached files, select (highlight) the file.
4. Once a file in the list is highlighted, the **Attach Selected File** button is activated in the bottom right side of the dialog box. Click the **Attach Selected File** button to properly attach the selected file to the question response.
5. **Step 2: Select the File to Attach According to the Method Chosen -- Select a New File from the Workstation or Network.** If the file cannot be located in the master list, then the method chosen in Step 1 must be “Select a New File from the Workstation or Network”.




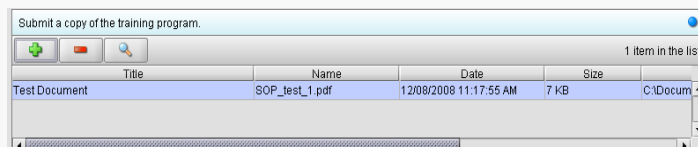
(Continued on Next Page)

**Attach File to Attachment Question (continued)**

6. The available fields in **Step 2** of the File Attachment dialog changes to correspond with the method chosen (as shown to the right).
7. Click the **file folder icon** (). You will see a *Select File dialog box* (as shown below, left).
8. Click in the **Look In** drop-down menu to locate the drive, such as Local Disk (C:), or folder where the PDF is stored.
9. When you locate the desired PDF, click to select it (highlight). The name of the file appears in **File Name**.
10. Click **Select**. The *Select File dialog box* closes, and you return to *New File Dialog box* (as shown below, right). The Name, Path, Date, and Size fields will be populated with the specifications from the file you have just selected.
11. Enter a title in **Descriptive title** (required entry) and a description in **General description**, if desired.
12. Click **OK**. You will return to the *File Attachment Dialog box*. The file that was added is automatically selected in the list of files.
13. Click **Attach Selected File**. You will now see the path (location) of the file on the network drive or hard drive of your computer appear in the file attachment question.



**Multiple File Attachments:** This question type allows you to attach multiple files as a response. Below is an example of an attachment question with a file attachment included. Note that the attach file icon () is still enabled after attaching a file, indicating that additional files may be attached as part of the response.



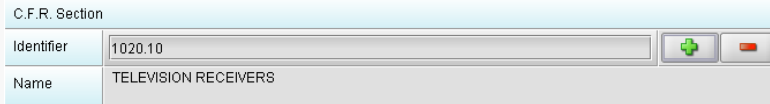
**Attach Multiple Files to Attachment Question**


To attach multiple files to a multiple file attachment question type, see the same instructions listed under the instructions for how to Attach File to Attachment Question, beginning on page 6 of this guide. Repeat these steps to attach multiple files.

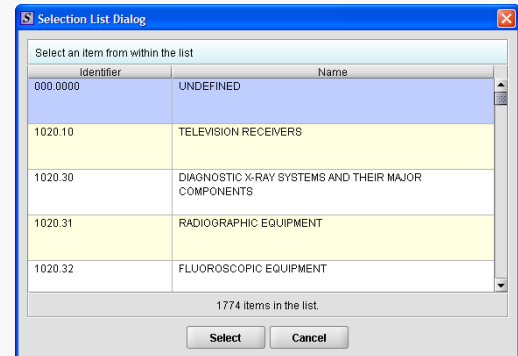
**List Item:** This question type allows you to select an item from a list of options. Below is an example of a list item question.

**Access the List of Available Options**

1. Click the **Select Item** icon (  ). A *Selection List Dialog* box is displayed (as shown below).



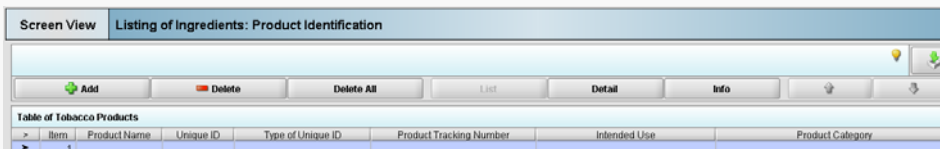
2. Click to select (highlight) the desired option.
3. Click the **Select** button. The *Selection List Dialog* box closes, and you return to the open submission with the list item question showing your selection (as shown on right).
4. If you wish to change your response, click the **delete** icon (  ). Your response selection is deleted from the question.
5. Repeat steps 1 through 3 to make another selection.



**Sections as Tables:** Entire screens may appear as a table. This format is indicated by a row of buttons for **Add New**, **Delete**, **Delete All**, an **up** arrow, and a **down** arrow. Directly below this row of buttons is the actual table (as shown below). You also see a **View List** and **View Detail** tabs.

**Add Entry to Tabular Section**

1. Click the **Add** button to add an item to the table. You see a screen containing questions for you to answer (an example in the **List** view is shown below).





2. To see the details of an entry in the list, click **View Detail** (as shown to the right).

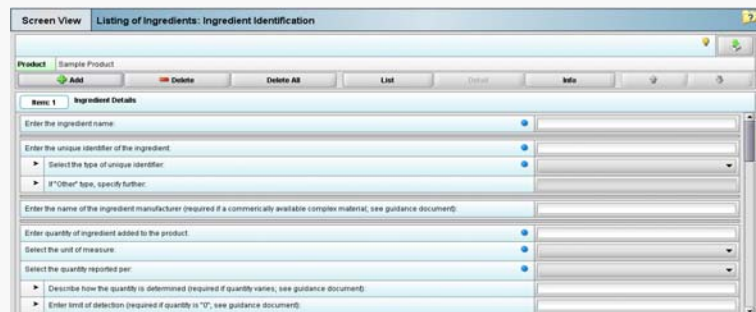
3. If you accidentally enter a blank into the table, (by clicking **Add New**, not responding to any questions, and then clicking **View Detail**), you will see a blank line in the **View List** view. Select the line to be deleted and click the **Delete** button to remove the item from the table.



4. Click the **Delete All** button to delete all entries in the tabular screen.

 To navigate through the list of entries in the table, use the up and down arrows.

 Some tabular screens may be linked together through a parent/child relationship. If this parent/child relationship exists, you will see a header bar on the child screens indicating which list item within the parent table you are currently entering data for. These child screens will be repeated for each list entry in the parent table, as necessary (as shown to the right as a green header bar).

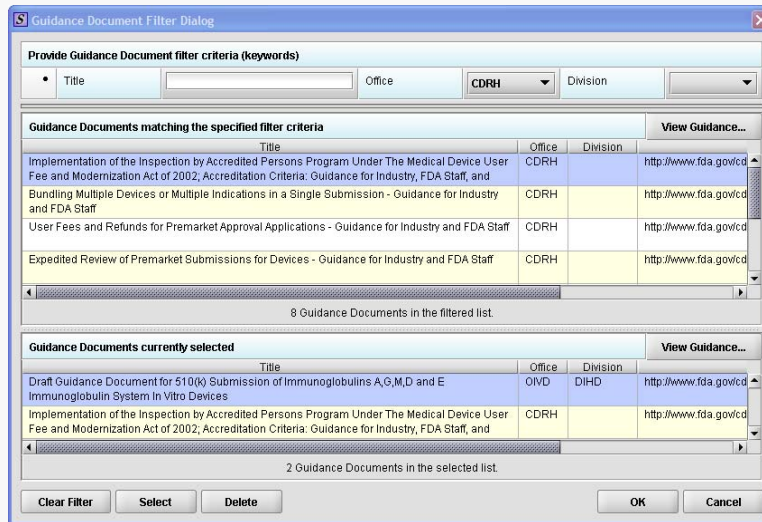









**Guidance Documents:** This question type allows you to select FDA guidance documents used to prepare your submission, as well as provides space for you to add supporting text if necessary. Below is an example of a guidance document question.

**Select a Guidance Document**

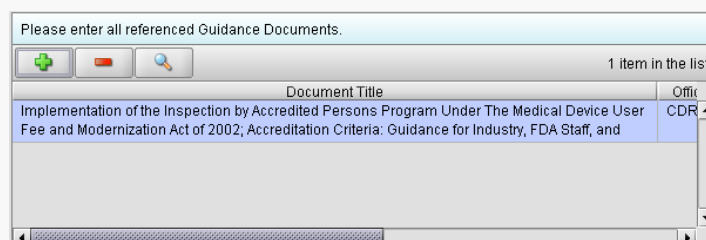
1. Click the **Add Guidance** icon (  ). The *Guidance Document Filter Dialog* box is displayed (as shown below).





On this dialog box, you have several options for searching for a particular guidance document:

- In the **Title** text box, you can type the title of the desired document (if you know what it is).
  - If you do not know the title of the document, select the applicable office from the **Office** list box.
  - On the **Division** list box, select the desired Division.
  - Click  to delete your selections and begin a new search.
2. Depending on which method you used, one or more guidance documents will appear in the **Guidance Documents matching the specified filter criteria** area of the screen.
  3. Use the scroll bar to see information about the found guidance documents.
  4. If you are connected to the Internet and have Adobe Acrobat installed, click to select a desired document and click  to see the selection.
  5. To move a guidance document to **Guidance Documents currently selected** area of the screen:
    - Click to select (highlight) a particular guidance document.
    - Click . The selected document appears in **Guidance Documents currently selected** area of the screen.
    - Repeat the above two items for each desired guidance document.
    - Click  to remove a guidance document from your selection.
  6. Click  when you have made your selections.

You return to the guidance document question with your selection appearing. Below is an example of a guidance document question containing a response.




**Product Code (Single):** Applicable to CDRH only. This question type allows you to search for and then identify the product code that is assigned to your product or device. If applicable, you are able to search for the device class, device panel and particular CFR section. The response to this question is for a single product code. Below is an example of a single product code question.

Choose the product code for this submission.	
Product Code	<input type="text"/>  
Product Code Name	
Device Class	
Classification Panel	
C.F.R. Section	
Add any other product codes that are applicable to this submission.	



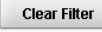

### Add a Single Product Code

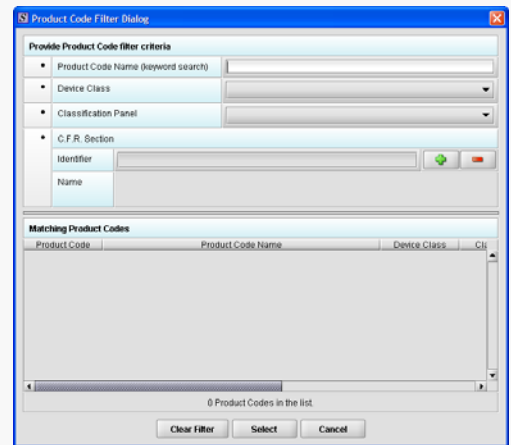
To enter a three-letter code in the product code question, follow the instructions below:

- If you know the three-letter code assigned to your product/device, enter it in the text box. The remaining fields are automatically filled in for you.
- If you wish to remove your entry, click the **delete** icon ().
- If you do not know the three-letter code, see the instructions below to search for the code.

If you are selecting a product code for a radiation emitting product and do not see an appropriate code, enter RZZ.

### Search for a Product Code by Keyword

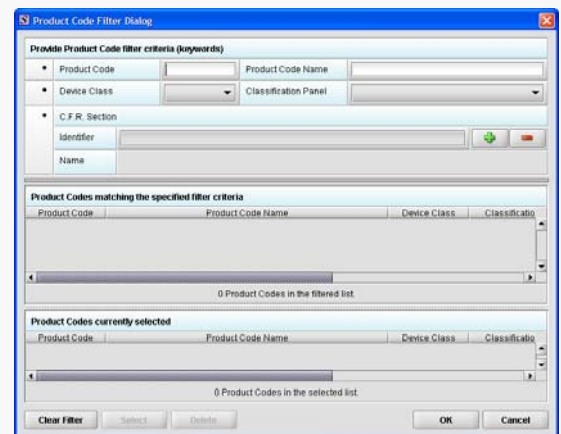
1. Click the **Select Item** icon (). A *Product Code Filter Dialog* box is displayed (as shown to the right).
2. Enter a keyword to search the database. You will be provided a list of product codes from which to choose in the **Matching Product Codes** portion of the dialog.
3. To further refine your search, **if desired**:
  - Click the **Device Class** drop-down list and make a selection.
  - Click the **Classification Panel** drop-down list and make a selection.
  - Click the **Select Item** icon () next to the Identifier (under C.F.R. Selection) and make a selection.
  - Click  to remove entries and start the search over again.
4. Click to highlight the best match to your product/device, and click . You return to the submission screen and the product code question. The remaining fields in the question are filled in for you.



**Product Codes (Multiple):** Applicable to CDRH only. This question type allows you to identify other product codes applicable to the submission. To the right is an example of a multiple product code question.


### Add Multiple Product Codes

1. Click the **Add Product Code** icon (). You see the *Product Codes Filter Dialog* box (as shown below).
2. Enter **Product Code** and **Product Code Name** in the appropriate sections.
3. Click .



(Continued on Next Page)

### Search for Multiple Product Codes by Keyword

1. Enter a keyword in **Product Code Name** to search the database. You will be provided a list of product codes from which to choose in the in **Product Codes matching the specified filter criteria** portion of the dialog box.
2. To further refine your search, if desired:
  - Click the **Device Class** drop-down list and make a selection.
  - Click the **Classification Panel** drop-down list and make a selection.
  - Click the **Select Item** icon (  ) next to the Identifier (under C.F.R. Selection) and make a selection.
  - Click  to remove entries and start the search over again.
3. Click to highlight the best match to your product/device, and click . The product/device appears in **Product Codes currently selected**.
4. Repeat steps 1 and 2 to continue to add product codes.

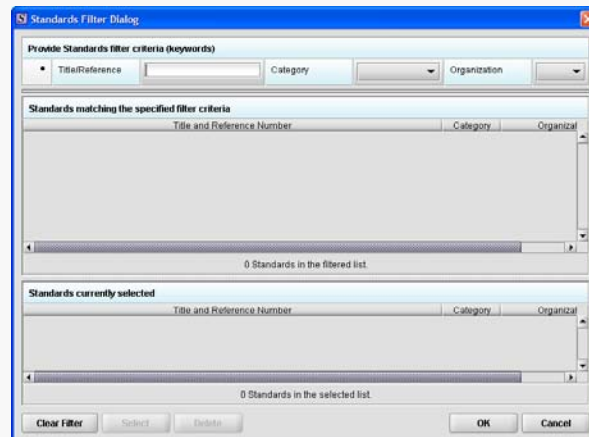
OR

- Click  to remove a product code from the selection.
5. Click  to return to the multiple product codes question, which shows your selections.

**Standards:** Applicable to CDRH only. This question type allows you to select a standard for your submission from the CDRH list of recognized standards.

### Add a Standard

1. Click the **Add Standards** icon. You see the *Standards Filter Dialog box* (as shown below).



2. Enter a title in **Title Reference** (if known) to search the database.
3. To further refine your search, if desired:
  - Click the **Category** drop-down list and make a selection.
  - Click the **Organization** drop-down list and make a selection.
  - Click  to remove entries and start the search over again.
4. Click to highlight the best match to your product/device, and click . The standard appears in **Standards matching the specified filter criteria**.
5. When you are finished adding standards, click . You return to the standards question.

## Check Completeness of Submission

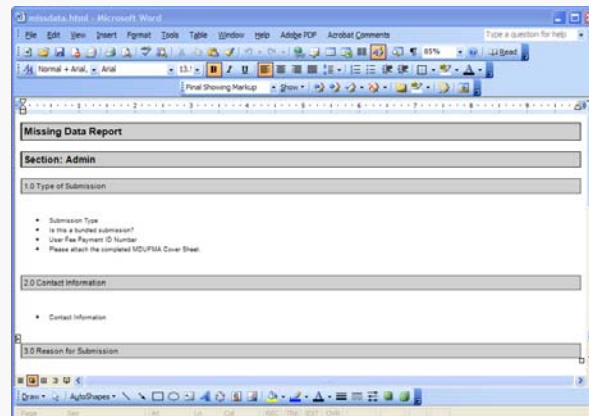
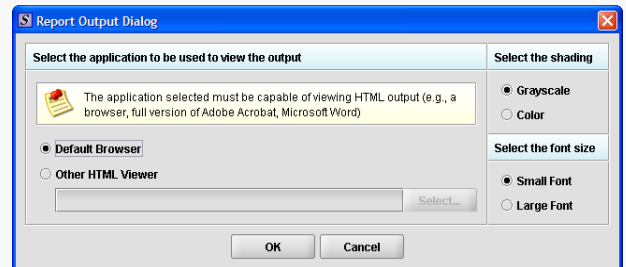
To check for completeness of a submission, you must identify if any data is missing from your report (and then enter the required data), and package the files for submission.

You will only be able to package files for submission if all required fields have been completed in the submission. To determine if any data is missing, you will generate a Missing Data Report. To proceed, the desired submission should be open and displayed on your computer screen.



All submission report outputs are generated as HTML and require an application capable of viewing HTML output, such as a WEB browser, the full version of Adobe Acrobat (not Acrobat Reader), or Microsoft Word.

- From the menu bar, click **Output > Missing Data Report**. The *Report Output Dialog* box is displayed (as shown to the right).
- On this dialog box:
  - Select the desired application to view the output in HTML:
  - Click the option button: **Default Browser** or **Other HTML Viewer** (The default setting is your Web Browser.)
  - If you selected **Other HTML Viewer**, the **Select** button becomes enabled. Click the **Select** button. You see the *Select HTML Viewer Application File* dialog box.
- Click in the **Look In** box to navigate to the **executable** (.EXE) of the application to view the HTML. For example, if you want to view the missing data output report in Word 2002, you would navigate using the following path: **C: > Programs > Microsoft Office > Microsoft Office > Office 11 > WINWORD.EXE**
- Click **Select**. You return to the *Report Output Dialog* box with your selection showing.
- Select the desired shading of the report: click the option button for **Grayscale** or **Color**.
- Select the desired font size: click the option button for **Small Font** or **Large Font** (which is approximately 10 pt).
- When you are finished making selections, click **OK**. The eSubmitter software generates the report in HTML, which opens for viewing in the application that you selected. The missing data output report will either state that there is no data missing or identify the missing data that must be entered (as shown below) before the files are packaged for submission.



- After you have verified that no data is missing from the submission, you are ready to package your files for submission.

## Package Submission Files

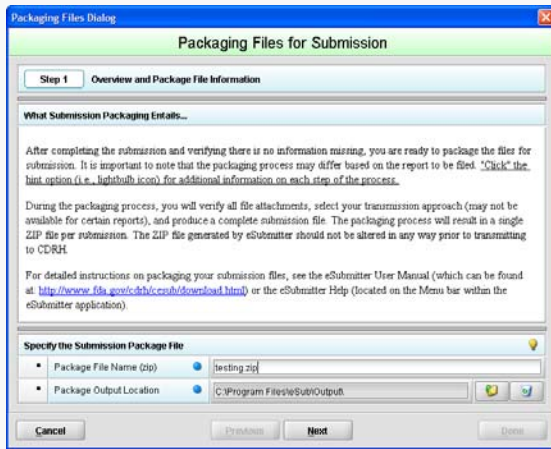
After completing the submission and verifying that there is no information missing, you are ready to package the files for submission. To proceed, the eSubmitter application should be open, and the finished submission displayed on your computer screen. **Please note these steps will differ based on the submission you are filing**

1. Click **Output > Package Files for Submission** from the menu bar.
2. If data is missing, a warning message will be displayed.
3. If the submission has all required data, the *Packaging Files Dialog* box is displayed (as shown to the right). Within the *Packaging Files Dialog* box you will be prompted to move through a series of steps detailed below.

### Step 1: Overview and Package File Information

This section contains a brief overview of the packaging process. Follow the instructions below.


1. Specify the submission package file name.
  - The **Package File Name (.zip)** text box identifies the default zip file name for the submission. (eSubmitter automatically uses the submission name for the zip file.) Make a note of the name for the zip file.
2. Specify the submission output location.
  - The **Package Output Location** identifies the file folder where the zip file is located. Make a note of the output location.
  - To change the location click the file folder icon, locate the desired location and click **Select**
3. Click **Next** to proceed to *Step 2: File Attachment Verification*.



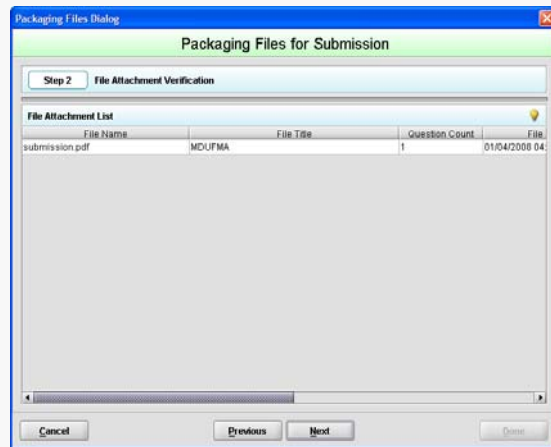
### Step 2: File Attachment Verification

This section lists all file attachments used in the submission.

1. Check the list to ensure that all of the appropriate file attachments are listed (only files referenced in responses will be included). See to the right for an example.
2. Check the question counts to confirm that the files are attached properly as question responses.

 If a file appears to be missing from the list, go to the **Submission File List** within eSubmitter (File Menu > Tools > Submission File List). In the **Master File List**, ensure that each file is attached to a question. A zero in the Question Count column indicates that the file is not attached to a specific question and therefore will not be included in the packaged submission.


3. Check the file dates, size, and locations to ensure the correct versions of the files are provided.
4. Click **Next** to proceed to *Step 3: Submittal Letter, Package Creation* and continue packaging the submission.  
OR  
Click **Previous** to go back to *Step 1: Overview and Package File Information*.  
OR  
Click **Cancel** and exit the *Package File Dialog* box.



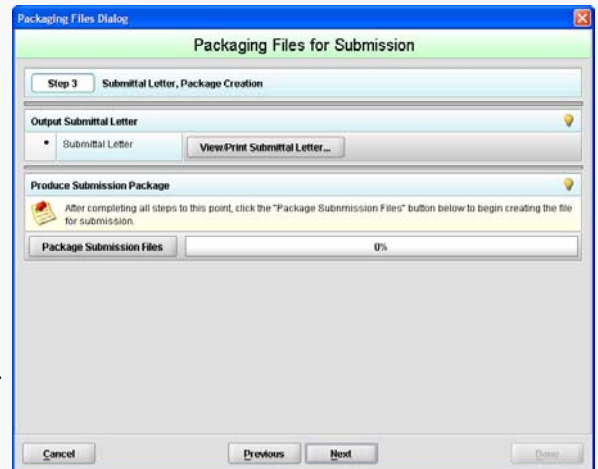
(Continued on Next Page)

### Step 3: Submittal Letter, Package Creation


**This step will differ based on the submission you are filing.** Some programs accept digital signature and submission via the Electronic Submissions Gateway and others require submission via CD-ROM and handwriting signatures. The required activities in Step 3 will differ based on the applicable program.

 For further details, see *Packaging and Transmission Guidelines for Participating eSubmitter Programs* on page 15.

If a specific step listed below does not appear in the dialog box on your screen, this is because it does not apply. Please skip the instructions and move to the next step displayed on the *Packaging Files Dialog* box. An example of what may appear in *Step 3: Submittal Letter, Package Creation* is shown to the right.





#### Output Submittal Letter


1. Click .
2. Ensure that your submittal letter is accurate.
3. Print and sign the submittal letter.
4. Prepare to mail the submittal letter (for CD transmission approach)

OR

Scan the submittal letter (for Gateway transmission approach) and note the location where you store the file (you will need to navigate to this location in the next step).

5. Click the **folder** icon () to attach the signed submittal letter that has been scanned.
6. Once you have located the signed cover letter, click  to attach the file to the packaging dialog box. The signed cover letter path should appear.

#### Produce Submission Package

1. Click on  to initiate the packaging of the ZIP file.


 Once the submission has packaged successfully, the status bar will indicate that the packaging is complete.



2. Click  to proceed to *Step 4: Transmit Submission Package* to view the transmission instructions related to your submission.

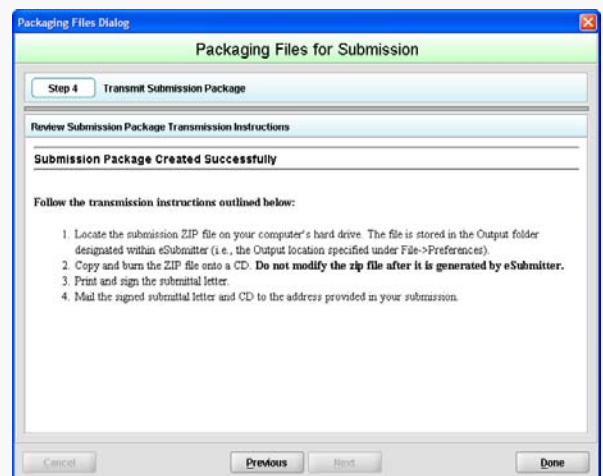
### Step 4: Transmit Submission Package

This section provides confirmation that the submission files have been successfully packaged and is ready to be sent to FDA. Follow the instructions below.

1. Read the instructions provided (as shown to the right). These instructions may vary depending on the program to which you are submitting.

 For further details, see *Packaging and Transmission Guidelines for Participating eSubmitter Programs* on page 15.

2. Click  to close the *Packaging Files Dialog* box.  
OR  
Click  to return to *Step 3: Submittal Letter, Package Creation*.



(Continued on Next Page)

## Locate the Submission Files on the Computer's Hard Drive

1. Use Windows Explorer to navigate to the label for the computer's installed hard drive, e.g., **Local Disk (C:)**. For example, on a computer with Windows 2000:
  - Open Windows Explorer.
  - Double-click **My Computer** to display its contents.
  - Look for the label of the computer's installed hard drive. For example, **(C:)**.
2. Double-click on the label for the hard drive to display its contents.
3. Below is a list of the most likely locations for the submission files, based on the installation location and operating system.
  - **If installed on a Network drive (on Vista or Windows XP or earlier):** The location of your data and output files will be contained within the **eSub** directory where the application was installed.
  - **If installed on a Workstation (on Windows Vista):** data and output files should be hosted in the following location:  
**C:\Users\Public\Sub\_Home\.**
  - **If installed on a Workstation (on Windows XP or earlier):** data and output files should be hosted in the following location:  
**C:\Documents and Settings\Sub\_Home\.**

If you still cannot locate the submission files, check within your User Preferences, by navigating to **File > Preferences > File Location**. The **Output Location** field will specify exactly where the submission files are located

4. Navigate to the appropriate location.
5. Double-click on the output file folder to open. The zip file that you created in *Packaging Submission Files* appears. Do not modify the zip file after it is generated by eSubmitter.
6. Follow the transmission instructions for the program you are submitting to. See *Contacts and Addresses* tab on the *Welcome Screen* for more information on how and where to send your submission.

## Packaging and Transmission Guidelines for Participating eSubmitter Programs

As of March 2011, the following is acceptable for each participating program regarding digital signatures and the FDA Electronic Submissions Gateway. Please verify with the FDA program website that these guidelines have not changed. Program websites are accessible from the [eSubmitter home page](#).

### CDRH Programs:

- **OIVD's 510(k):** Digital signatures are not accepted at this time for OIVD 510(k) submissions. In the future, the digital signature will be available in conjunction with the FDA Electronic Submissions Gateway (ESG).
- **Radiological Health Reports and Correspondence:** Digital signatures are accepted and required when utilizing the FDA ESG to submit reports and correspondence. See note below regarding the FDA ESG. RadHealth Submissions utilizing the eSubmitter software may still also be burned to CD and mailed to CDRH in lieu of using the ESG.
- **eMDR MedWatch 3500A Form:** The eMDR program accepts digital signatures and utilizes the FDA ESG or transmission of the submission package. eMDR submissions may only be sent through the FDA Gateway.

### CBER Program:

- **OBRR BLA Pilot Submissions:** Digital signatures are accepted and required for signing the necessary FDA OMB forms (Form 356h and Form 2567, when applicable). However, the pilot programs do not accept submissions via the FDA Electronic Submissions Gateway at this time. You must be registered with CBER as a pilot participant to submit BLA submissions via eSubmitter. Please contact [CBER\\_eSubmitter\\_program@fda.hhs.gov](mailto:CBER_eSubmitter_program@fda.hhs.gov) if you are not registered and are interested in participating.

### CTP Program:

- **Tobacco Establishment Registration, Product Listing and Health Data Submissions:** Digital signatures are accepted and required when utilizing the FDA Electronic Submission Gateway to submit registration, listing and additional health data.

### CVM Program:

- **ONADE:** Digital signatures are accepted and required when utilizing the FDA Electronic Submission Gateway to submit eSubmitter electronic submissions to CVM.

**Note regarding FDA Electronic Submission Gateway:** CDRH's Radiological Health submissions program, the eMDR program and the CTP utilize the FDA ESG, an agency-wide entry point for all electronic submissions. CDRH uses the ESG to receive all electronic Radiation Safety Product, Annual, Abbreviated and Supplemental Reports and Correspondence types, and eMDR MedWatch 3500A forms. The ESG authenticates and validates electronic submissions and routes it to the appropriate Center. **Please visit <http://www.fda.gov/esg/> to register as a trading partner for an initial ESG test account. Upon successful transmission of the test submission, your account will be promoted to a production account.**



## User Support

For technical assistance for the eSubmitter software, an email can be sent to [esubmitter@fda.hhs.gov](mailto:esubmitter@fda.hhs.gov). In the email, please be sure provide the company name and contact information where a response can be sent.

For CVM related technical support or general inquiries, please contact: [cvmesubmitter@fda.hhs.gov](mailto:cvmesubmitter@fda.hhs.gov).

For CBER related technical support or general inquires, please contact: [CBER\\_esubmitter\\_program@fda.hhs.gov](mailto:CBER_esubmitter_program@fda.hhs.gov)

