

## HIGHLIGHTS OF PRESCRIBING INFORMATION

These highlights do not include all the information needed to use Berinert safely and effectively. See full prescribing information for Berinert.

### Berinert [C1 Esterase Inhibitor (Human)]

For intravenous use. Freeze-Dried Powder for Reconstitution.

Initial U.S. Approval: 2009

#### RECENT MAJOR CHANGES

Indications and Usage (1)	12/2011
Dosage and Administration (2.2)	12/2011
Warnings and Precautions (5.2)	09/2011
Warnings and Precautions (5.3)	08/2011
Warnings and Precautions (5.4)	12/2011

#### INDICATIONS AND USAGE

Berinert is a plasma-derived C1 Esterase Inhibitor (Human) indicated for the treatment of acute abdominal, facial, or laryngeal attacks of hereditary angioedema (HAE) in adult and adolescent patients (1).

The safety and efficacy of Berinert for prophylactic therapy have not been established (1).

#### DOSAGE AND ADMINISTRATION

For intravenous use only.

- Store the vial in the original carton in order to protect from light. Store at 2-25°C (36-77°F). Do not freeze (2).
- Administer 20 units per kg body weight (2).
- Reconstitute Berinert prior to use using the diluent (sterile water) provided (2.1).
- Administer at room temperature within 8 hours of reconstitution (2.1).
- Inject at a rate of approximately 4 mL per minute (2.2).
- Do not mix Berinert with other medicinal products or solutions (2.2).
- Appropriately trained patients may self-administer upon recognition of an HAE attack (2.2).

#### DOSAGE FORMS AND STRENGTHS

500 units lyophilized concentrate in a single-use vial for reconstitution with 10 mL of diluent (sterile water) (3).

#### CONTRAINDICATIONS

- Do not use in patients with a history of life-threatening immediate hypersensitivity reactions, including anaphylaxis, to C1 esterase inhibitor preparations (4).

#### WARNINGS AND PRECAUTIONS

- Hypersensitivity reactions may occur. Epinephrine should be immediately available to treat any acute severe hypersensitivity reactions following discontinuation of administration (5.1).
- Thrombotic events have been reported at the recommended dose of C1 Esterase Inhibitor (Human) products, including Berinert, following treatment of HAE. Thrombotic events also have been reported in association with Berinert when used off-label and at higher than labeled doses.<sup>1</sup> Monitor closely patients with known risk factors for thrombotic events (5.2).
- Berinert is made from human plasma and may contain infectious agents, eg, viruses and, theoretically, the Creutzfeldt-Jakob disease (CJD) agent (5.3).
- Laryngeal attacks: Following self-administration of Berinert for laryngeal attacks, advise patients to immediately seek medical attention (5.4).

#### ADVERSE REACTIONS

- The most serious adverse reaction reported in subjects who received Berinert was an increase in the severity of pain associated with HAE (6.1).
- The most common adverse reaction reported in greater than 4% of the subjects and greater than placebo among subjects who received Berinert in the placebo-controlled clinical trial was dysgeusia (6.1).

To report SUSPECTED ADVERSE REACTIONS, contact the CSL Behring Pharmacovigilance Department at 1-866-915-6958 or to the FDA at 1-800-FDA-1088 or [www.fda.gov/medwatch](http://www.fda.gov/medwatch).

#### USE IN SPECIFIC POPULATIONS

- Pregnancy: No animal data. Limited human data. Use only if clearly needed (8.1).
- Compared to adults, when adjusted for baseline, the half-life of Berinert was shorter and clearance (on per kg basis) was faster in children. The clinical implication of this difference is not known (12.3).

See 17 for PATIENT COUNSELING INFORMATION and FDA-approved patient labeling.

Revised: December 2011

## FULL PRESCRIBING INFORMATION: CONTENTS\*

<b>1</b>	<b>INDICATIONS AND USAGE</b>
<b>2</b>	<b>DOSAGE AND ADMINISTRATION</b>
2.1	Preparation and Handling
2.2	Reconstitution and Administration
<b>3</b>	<b>DOSAGE FORMS AND STRENGTHS</b>
<b>4</b>	<b>CONTRAINDICATIONS</b>
<b>5</b>	<b>WARNINGS AND PRECAUTIONS</b>
5.1	Hypersensitivity
5.2	Thrombotic Events
5.3	Transmission of Infectious Agents
5.4	Laryngeal Attacks
<b>6</b>	<b>ADVERSE REACTIONS</b>
6.1	Clinical Trials Experience
6.2	Postmarketing Experience
<b>7</b>	<b>DRUG INTERACTIONS</b>
<b>8</b>	<b>USE IN SPECIFIC POPULATIONS</b>
8.1	Pregnancy
8.2	Labor and Delivery
8.3	Nursing Mothers
8.4	Pediatric Use
8.5	Geriatric Use

<b>10</b>	<b>OVERDOSAGE</b>
<b>11</b>	<b>DESCRIPTION</b>
<b>12</b>	<b>CLINICAL PHARMACOLOGY</b>
12.1	Mechanism of Action
12.3	Pharmacokinetics
<b>13</b>	<b>NONCLINICAL TOXICOLOGY</b>
13.1	Carcinogenesis, Mutagenesis, Impairment of Fertility
13.2	Animal Toxicology and/or Pharmacology
<b>14</b>	<b>CLINICAL STUDIES</b>
<b>15</b>	<b>REFERENCES</b>
<b>16</b>	<b>HOW SUPPLIED/STORAGE AND HANDLING</b>
16.1	How Supplied
16.2	Storage and Handling
<b>17</b>	<b>PATIENT COUNSELING INFORMATION</b>

\*Sections or subsections omitted from the full prescribing information are not listed.

## FULL PRESCRIBING INFORMATION

### Berinert<sup>®</sup> [C1 Esterase Inhibitor (Human)] Freeze-dried powder

#### 1 INDICATIONS AND USAGE

Berinert is a plasma-derived concentrate of C1 Esterase Inhibitor (Human) indicated for the treatment of acute abdominal, facial, or laryngeal attacks of hereditary angioedema (HAE) in adult and adolescent patients.

The safety and efficacy of Berinert for prophylactic therapy have not been established.

#### 2 DOSAGE AND ADMINISTRATION

##### For Intravenous Use Only.

Administer Berinert at a dose of 20 units per kg body weight by intravenous injection. Doses lower than 20 units/kg body weight should not be administered.

Berinert is provided as a freeze-dried powder for reconstitution with the diluent (sterile water) provided. Store the vial in the original carton in order to protect from light. Do not freeze.

##### 2.1 Preparation and Handling

- Check the expiration date on the product vial label. Do not use beyond the expiration date.
- Use aseptic technique when preparing and administering Berinert (*see [Reconstitution and Administration \[2.2\]](#)*).
- After reconstitution and prior to administration, inspect Berinert visually for particulate matter and discoloration. The reconstituted solution should be colorless, clear, and free from visible particles. Do not use if the solution is cloudy, discolored, or contains particulates.
- The Berinert vial is for single use only. Berinert contains no preservative. Any product that has been reconstituted should be used promptly. The reconstituted solution must be used within 8 hours. Discard partially used vials.
- Do not freeze the reconstituted solution.

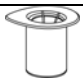

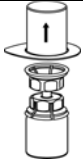



##### 2.2 Reconstitution and Administration

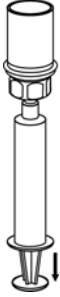

Each Berinert kit consists of one carton containing one single-use vial of Berinert, one 10 mL vial of diluent (sterile water), one Mix2Vial<sup>™</sup> transfer set, and one alcohol swab.

Use either the Mix2Vial transfer set provided with Berinert (*see [How Supplied \[16.1\]](#)*) or a commercially available double-ended needle and vented filter spike.

## Reconstitution

The procedures below are provided as general guidelines for the reconstitution and administration of Berinert.

1. Ensure that the Berinert vial and diluent vial are at room temperature. Use aseptic technique during the reconstitution procedure.	
2. Place the Berinert vial, diluent vial and Mix2Vial transfer set on a flat surface.	
3. Remove the flip caps from the Berinert and diluent vials. Treat the vial stoppers with the alcohol swab provided and allow to dry prior to opening the Mix2Vial transfer set package.	
4. Open the Mix2Vial transfer set package by peeling away the lid (Figure 1). Leave the Mix2Vial transfer set in the clear package.	 Figure 1
5. Place the diluent vial on a flat surface and hold the vial tightly. Grip the Mix2Vial transfer set together with the clear package and push the plastic spike at the blue end of the Mix2Vial transfer set firmly through the center of the stopper of the diluent vial (Figure 2).	 Figure 2
6. Carefully remove the clear package from the Mix2Vial transfer set. Make sure that you pull up only the clear package, and not the Mix2Vial transfer set (Figure 3).	 Figure 3
7. With the Berinert vial placed firmly on a flat surface, invert the diluent vial with the Mix2Vial transfer set attached and push the plastic spike of the transparent adapter firmly through the center of the stopper of the Berinert vial (Figure 4). The diluent will automatically transfer into the Berinert vial.	 Figure 4
8. With the diluent and Berinert vial still attached to the Mix2Vial transfer set, gently swirl the Berinert vial to ensure that the Berinert is fully dissolved (Figure 5). Do not shake the vial.	 Figure 5
9. With one hand, grasp the Berinert-side of the Mix2Vial transfer set and with the other hand grasp the blue diluent-side of the Mix2Vial transfer set and unscrew the set into two pieces (Figure 6).	 Figure 6
10. Carefully look at reconstituted solution in each vial of Berinert. It should be colorless, clear, and free from visible particles. <b>Do not use the vial if the</b>	

<p>liquid looks cloudy, contains particles, or has changed color. Do not use if the expiration date on the label has expired.</p>	
<p>11. Draw air into an empty, sterile syringe. While the Berinert vial is upright, screw the syringe to the Mix2Vial transfer set. Inject air into the Berinert vial. While keeping the syringe plunger pressed, invert the system upside down and draw the concentrate into the syringe by pulling the plunger back slowly (Figure 7).</p>	 <p>Figure 7</p>
<p>12. Now that the concentrate has been transferred into the syringe, firmly grasp the barrel of the syringe (keeping the plunger facing down) and unscrew the syringe from the Mix2Vial transfer set (Figure 8). Attach the syringe to a suitable intravenous (IV) administration set.</p>	 <p>Figure 8</p>
<p>13. If the same patient is to receive more than one vial, the contents of multiple vials may be pooled in a single administration device (eg, syringe). A new unused Mix2Vial transfer set should be used for each Berinert vial.</p>	
<p>14. Do not refrigerate after reconstitution. When reconstitution is carried out using aseptic technique, administration may begin within 8 hours, provided the solution has been stored at up to 25°C (77°F). Do not refrigerate or freeze the reconstituted solution.</p>	

## Administration

- Do not mix Berinert with other medicinal products. Administer Berinert by a separate infusion line.
- Use aseptic technique when administering Berinert.
- Follow recommended venipuncture guidelines for initiating intravenous therapy.
- Administer Berinert by slow intravenous injection at a rate of approximately 4 mL per minute. Please refer to the illustration in step 6 of the self-administration section in the Patient Product Information (PPI) section.
- For self-administration, provide the patient with instructions and training for intravenous injection outside of a clinic setting so patients may self-administer Berinert upon recognition of symptoms of an HAE attack (*see Patient Counseling Information [17]*).
- After administration, immediately discard any unused product and all used disposable supplies in accordance with local requirements.

### **3 DOSAGE FORMS AND STRENGTHS**

- Berinert is available in a single-use vial that contains 500 units of C1 esterase inhibitor as a lyophilized concentrate.
- Each vial must be reconstituted with 10 mL of diluent (sterile water) provided.

### **4 CONTRAINDICATIONS**

Berinert is contraindicated in individuals who have experienced life-threatening hypersensitivity reactions, including anaphylaxis, to C1 esterase inhibitor preparations.

### **5 WARNINGS AND PRECAUTIONS**

#### **5.1 Hypersensitivity**

Severe hypersensitivity reactions may occur. Epinephrine should be immediately available for treatment of acute severe hypersensitivity reaction (*see Patient Counseling Information [17]*). The signs and symptoms of hypersensitivity reactions may include hives, generalized urticaria, tightness of the chest, wheezing, hypotension, and/or anaphylaxis during or after injection of Berinert.

Because hypersensitivity reactions may have symptoms similar to HAE attacks, treatment methods should be carefully considered. In case of suspected hypersensitivity, immediately discontinue administration of Berinert and institute appropriate treatment.

## 5.2 Thrombotic Events

Thrombotic events have been reported at the recommended dose of C1 Esterase Inhibitor (Human) products, including Berinert, following treatment of HAE. Thrombotic events also have been reported in association with Berinert when used off-label and at higher than labeled doses.<sup>1</sup> Monitor closely patients with known risk factors for thrombotic events.

Animal studies have confirmed the risk of thrombosis from intravenous administration of C1 esterase inhibitor products<sup>2</sup> (see *Overdosage [10]* and *Animal Toxicology and/or Pharmacology [13.2]*).

## 5.3 Transmission of Infectious Agents

Because Berinert is made from human blood, it may contain infectious agents (eg, viruses and, theoretically, the Creutzfeldt-Jakob disease [CJD] agent) that can cause disease. The risk that such products will transmit an infectious agent has been reduced by screening plasma donors for prior exposure to certain viruses, by testing for the presence of certain current virus infections, and by processes demonstrated to inactivate and/or remove certain viruses during manufacturing (see *Description [11]* and *Patient Counseling Information [17]*).

Despite these measures, such products may still potentially transmit disease. There is also the possibility that unknown infectious agents may be present in such products.

Since 1979, a few suspected cases of viral transmission have been reported with the use of Berinert outside the US, including cases of acute hepatitis C. From the incomplete information available from these cases, it was not possible to determine with certainty if the infections were or were not related to prior administration of Berinert. With the introduction of the pasteurization step (heat treatment in aqueous solution at 60°C for 10 hours) in 1985, case reports on suspected transmission of viruses have not demonstrated a causal relationship to the administration of Berinert.

The physician should discuss the risks and benefits of this product with the patient before prescribing or administering it to the patient. (see *Patient Counseling Information [17]*).

All infections thought by a physician possibly to have been transmitted by Berinert should be reported by lot number, by the physician, or other healthcare provider to the CSL Behring Pharmacovigilance Department at 1-866-915-6958.

## 5.4 Laryngeal Attacks

Given the potential for airway obstruction during acute laryngeal HAE attacks, patients self-administering Berinert should be advised to immediately seek medical attention in an appropriate healthcare facility after treatment with Berinert.

## 6 ADVERSE REACTIONS

The most serious adverse reaction reported in subjects enrolled in clinical studies who received Berinert was an increase in the severity of pain associated with HAE.

The most common adverse reaction reported in greater than 4% of the subjects and greater than placebo among subjects who received Berinert in the placebo-controlled clinical trial was dysgeusia.

### 6.1 Clinical Trials Experience

*Because clinical studies are conducted under widely varying conditions, adverse reaction rates observed in the clinical trials of a drug cannot be directly compared to rates in the clinical trials of another drug and may not reflect the rates observed in practice.*

#### Placebo-controlled Clinical Study

In the placebo-controlled clinical study, referred to as the randomized clinical trial (RCT) (*see Clinical Studies [14]*), 124 subjects experiencing an acute moderate to severe abdominal or facial HAE attack were treated with Berinert (either a 10 unit per kg body weight or a 20 unit per kg body weight dose), or placebo (physiological saline solution).

The treatment-emergent serious adverse reactions/events that occurred in 5 subjects in the RCT were laryngeal edema, facial attack with laryngeal edema, swelling (shoulder and chest), exacerbation of hereditary angioedema, and laryngospasm.

**Table 1: Adverse Reactions\* Occurring up to 4 Hours After Initial Infusion in More Than 4% of Subjects†**

Adverse Reactions	Number (%) of Subjects Reporting Adverse Reactions Berinert 20 units/kg (n=43)	Number (%) of Subjects Reporting Adverse Reactions Placebo Group (n=42)
Nausea†	3 (7%)	5 (11.9%)
Dysgeusia	2 (4.7%)	0 (0)
Abdominal Pain†	2 (4.7%)	3 (7.1%)
Vomiting†	1 (2.3%)	3 (7.1%)
Diarrhea†	0 (0)	4 (9.5%)
Headache	0 (0)	2 (4.8%)

\* The study protocol specified that adverse events that began within 72 hours of blinded study medication administration, irrespective of the investigator's assessment of causality, were to be classified as at least possibly related to study medication (ie, adverse reactions).

† The following abdominal symptoms were identified in the protocol as associated with HAE abdominal attacks: abdominal pain, bloating, cramps, nausea, vomiting, and diarrhea.

**Table 2: Adverse Reactions\* Occurring in More Than 4% of Subjects up to 72 Hours After Infusion of Initial or Rescue Medication† by Intent-to-Treat**

Adverse Reactions	Number (%) of Subjects Reporting Adverse Reactions†‡ Berinert 20 units/kg (n=43)	Number (%) of Subjects Reporting Adverse Reactions†‡ Placebo Group (n=42)
Nausea	3 (7%)	11 (26.2%)
Headache	3 (7%)	5 (11.9%)
Abdominal Pain	3 (7%)	5 (11.9%)
Dysgeusia	2 (4.7%)	1 (2.4%)
Vomiting	1 (2.3%)	7 (16.7%)
Pain	1 (2.3%)	4 (9.5%)
Muscle spasms	1 (2.3%)	4 (9.5%)
Diarrhea	0 (0)	8 (19%)
Back pain	0 (0)	2 (4.8%)
Facial pain	0 (0)	2 (4.8%)

\* The study protocol specified that adverse events that began within 72 hours of blinded study medication administration, irrespective of the investigator's assessment of causality, were to be classified as at least possibly related to study medication (ie, adverse reactions).

† If a subject experienced no relief or insufficient relief of symptoms within 4 hours after infusion, investigators had the option to administer a blinded second infusion ("rescue" treatment) of Berinert (20 units/kg for the placebo group or 10 units/kg for the 10 units/kg group), or placebo (for the 20 units/kg group).

‡ Adverse reactions following either initial treatment and/or blinded "rescue" treatment. Because more subjects in the placebo randomization group than in the Berinert randomization group received rescue treatment, the median observation period in this analysis for subjects randomized to placebo was slightly longer than for subjects randomized to receive Berinert.

Subjects were tested at baseline and after 3 months for possible exposure to Parvovirus B19, hepatitis B, hepatitis C, and HIV-1 and HIV-2. No subject who underwent testing evidenced seroconversion or treatment-emergent positive polymerase chain reaction testing for these pathogens.

### Extension Study

In the safety analysis of the open-label extension study, 57 subjects with 1085 acute moderate to severe abdominal, facial, peripheral, and laryngeal attacks received a 20 unit/kg body weight dose of Berinert (*see Clinical Studies [14]*). This study provides additional safety data in subjects who received multiple infusions of the product for sequential HAE attacks (one infusion per attack).



Table 3 lists the adverse reactions that occurred in the safety analysis of the open-label extension study in  $\geq 2$  subjects or associated with  $\geq 5$  attacks during infusion or within 24 hours or 72 hours after the end of a Berinert infusion.

**Table 3: Incidence of Subjects and Attacks with Adverse Reactions (ARs)\* Starting during Infusion or Within 24 Hours or 72 Hours after End of an Infusion (Experienced by  $\geq 2$  Subjects or Associated with  $\geq 5$  Attacks Overall) by Preferred Term (Safety Subject and Attack Populations)**

Preferred term	Number (%) of Subjects (n=57)		Number (%) of Attacks (n=1085)	
	ARs within 24 hours	ARs within 72 hours	ARs within 24 hours	ARs within 72 hours
<b>Any preferred term</b>	<b>13 (22.8%)</b>	<b>20 (35.1%)</b>	<b>27 (2.5%)</b>	<b>41 (3.8%)</b>
Headache	2 (3.5%)	4 (7.0%)	3 (0.3%)	6 (0.6%)
Nasopharyngitis	1 (1.8%)	2 (3.5%)	1 (<0.1%)	2 (0.2%)
Abdominal pain or discomfort	1 (1.8%)	3 (5.3%)	2 (0.2%)	6 (0.6%)
Upper respiratory tract infection	0 (0)	1 (1.8%)	0 (0)	1 (<0.1%)
Hereditary angioedema <sup>†</sup>	1 (1.8%)	1 (1.8%)	1 (<0.1%)	1 (<0.1%)
Influenza like illness	1 (1.8%)	2 (3.5%)	1 (<0.1%)	2 (0.2%)
Rash	2 (3.5%)	2 (3.5%)	2 (0.2%)	2 (0.2%)
Vulvovaginal mycotic infection	0 (0)	2 (3.5%)	0 (0)	2 (0.2%)
Nausea	1 (1.8%)	1 (1.8%)	4 (0.4%)	5 (0.5%)

\* Because of the allowance of rescue medication in both study arms, all listed adverse events were considered to be at least potentially related to study medication (eg, adverse reactions), regardless of the investigator's opinion concerning causality.

N = total number of subjects/attacks

Data are sorted by decreasing frequency by number of subjects.

<sup>†</sup> Hereditary angioedema attacks were only to be reported as adverse reaction if it was a worsening of symptoms during a treated attack. New attacks were not to be reported as adverse reactions. Although the adverse reaction of hereditary angioedema in subject 22301 was a new attack that started after the previous attack had completely resolved, this attack was reported as an adverse reaction, because the attack was not included in the study and treated outside study site with medication other than the study medication.

**Table 4: Summary of Adverse Reactions\* by Type of Attack (Safety Subject Population)**

Type of AR	Number (%) of Subjects				
	Abdominal (n=51)	Peripheral (n=30)	Laryngeal (n=16)	Facial (n=21)	Other (n=3)
Subjects with ARs	17 (33.3%)	7 (23.3%)	2 (12.5%)	0 (0)	0 (0)
Subjects with at least possibly related ARs	4 (7.8%)	3 (10.0%)	1 (6.3%)	0 (0)	0 (0)
Subjects with serious ARs	1 (2.0%)	0 (0)	0 (0)	0 (0)	0 (0)
Study medication permanently discontinued due to ARs	1 (2.0%)	0 (0)	0 (0)	0 (0)	0 (0)
<b>Most frequent ARs (≥3 subjects overall)</b>					
Headache	5 (9.8%)	0 (0)	0 (0)	0 (0)	0 (0)
Nasopharyngitis	1 (2.0%)	2 (6.7%)	0 (0)	0 (0)	0 (0)
<b>At least possibly related ARs</b>					
Abdominal discomfort	0 (0)	1 (3.3%)	0 (0)	0 (0)	0 (0)
Dizziness	1 (2.0%)	0 (0)	0 (0)	0 (0)	0 (0)
Dry mouth	0 (0)	1 (3.3%)	0 (0)	0 (0)	0 (0)
Erythema infectiosum	1 (2.0%)	0 (0)	0 (0)	0 (0)	0 (0)
Headache	1 (2.0%)	0 (0)	0 (0)	0 (0)	0 (0)
Infusion-related reaction	1 (2.0%)	0 (0)	0 (0)	0 (0)	0 (0)
Influenza like illness	1 (2.0%)	0 (0)	1 (6.3%)	0 (0)	0 (0)
Pruritus	0 (0)	1 (3.3%)	0 (0)	0 (0)	0 (0)
Rash	0 (0)	1 (3.3%)	0 (0)	0 (0)	0 (0)

\* Because of the allowance of rescue medication in both study arms, all listed adverse events were considered to be at least potentially related to study medication (eg, adverse reactions), regardless of the investigator's opinion concerning causality.

N = number of subjects

Only ARs associated with attacks of the respective subgroups were included in the analysis.

The incidence and type of adverse reactions with Berinert when administered for treatment of multiple consecutive acute HAE attacks of any type was similar to those previously observed. As in the placebo-controlled study, no proven cases of infections due to HIV-1/2, HAV, HBV, HCV or Parvovirus B19 were observed during the study.

## **6.2 Postmarketing Experience**

*Because postmarketing reporting of adverse reactions is voluntary and from a population of uncertain size, it is not always possible to reliably estimate the frequency of these reactions or establish a causal relationship to product exposure.*

Adverse reactions reported in Europe since 1979 in patients receiving Berinert for treatment of HAE include hypersensitivity/anaphylactic reactions, injection-site pain, injection-site redness, chills, and fever.

### Thrombotic Events Associated with HAE Treatment

Thromboembolic events including basilar artery thrombosis, multiple pulmonary microemboli, and thrombosis have been reported with the use of Berinert at the recommended dose following treatment of HAE.

### Thrombotic Events Associated with Off-Label Use

Thromboembolic events reported with the use of Berinert in patients receiving off-label high doses during cardiac surgery include carotid artery thrombosis, cerebral thrombosis, myocardial infarction, pulmonary embolism, renal vein thrombosis, sagittal sinus thrombosis, inferior vena cava thrombosis, superior vena cava thrombosis, internal jugular vein thrombosis, and peripheral venous thrombosis.

The following adverse reactions, identified by system organ class, have been attributed to Berinert during post-approval use outside the US.

- *Immune System Disorder: Hypersensitivity/anaphylactic reactions, and shock*
- *General/Body as a Whole: Pain on injection, redness at injection site, chills, and fever*

## **7 DRUG INTERACTIONS**

No drug interaction studies have been conducted.

## **8 USE IN SPECIFIC POPULATIONS**

### **8.1 Pregnancy**

Pregnancy Category C. Animal reproduction studies have not been conducted with Berinert. It is not known whether Berinert can cause fetal harm when administered to a pregnant woman or can affect reproduction capacity. Berinert should be given to a pregnant woman only if clearly needed. In a retrospective case collection study, 20 pregnant women ranging in age from 20 to 35 years received Berinert with repeated doses up to 3,500 units per attack; these women reported no complications during delivery and no harmful effects on their 34 neonates.

### **8.2 Labor and Delivery**

The safety and effectiveness of Berinert administration prior to or during labor and delivery have not been established. Use only if clearly needed.

### **8.3 Nursing Mothers**

It is not known whether Berinert is excreted in human milk. Because many drugs are excreted in human milk, use only if clearly needed when treating a nursing woman.

### **8.4 Pediatric Use**

Safety and efficacy of Berinert in children (ages 0 through 12) have not been established. The clinical studies included an insufficient number of subjects in this age group to determine whether they respond differently from older subjects. In the pharmacokinetic study (*see Pharmacokinetics [12.3]*), the safety and pharmacokinetics of Berinert were evaluated in 5 children (ages 3 through 12) and in 8 adolescent subjects (ages 13 through 16). The 5 children less than 12 years had a shorter half-life ( $16.7 \pm 5.8$  hours) and faster clearance ( $1.9 \pm 1.1$  mL/hr/kg) compared to adults (half-life:  $18.4 \pm 3.5$  hours, clearance  $1.44 \pm 0.67$  mL/hr/kg).

### **8.5 Geriatric Use**

Safety and efficacy of Berinert in the geriatric population have not been established. Clinical studies with Berinert included four subjects older than 65 years. The clinical studies included an insufficient number of subjects in this age group to determine whether they respond differently from younger subjects.

## **10 OVERDOSAGE**

The development of thrombosis has been reported after doses exceeding 20 units/kg body weight of Berinert when used off-label<sup>1</sup> in newborns and young children with congenital heart anomalies during or after cardiac surgery under extracorporeal circulation.

The maximum dose administered in clinical studies in hereditary angioedema was 20 units/kg body weight.

## **11 DESCRIPTION**

Berinert is a human plasma-derived, purified, pasteurized, lyophilized concentrate of C1 esterase inhibitor to be reconstituted for intravenous administration. Berinert is prepared from large pools of human plasma from US donors. One standard unit of C1 esterase inhibitor concentrate is equal to the amount of C1 esterase inhibitor in 1 mL of fresh citrated human plasma, which is equivalent to 270 mg/L or 2.5  $\mu$ M/L. An in-house standard is used to assure lot-to-lot consistency in product potency.

C1 esterase inhibitor is a soluble, single-chain glycoprotein containing 478 amino acid residues organized into three beta-sheets and eight or nine alpha-helices.<sup>3</sup> The heavily glycosylated molecule has an apparent molecular weight of 105 kD, of which the carbohydrate chains comprise 26% to 35%.<sup>4</sup>

Each vial of Berinert contains 500 units C1 esterase inhibitor, 50 to 80 mg total protein, 85 to 115 mg glycine, 70 to 100 mg sodium chloride, and 25 to 35 mg sodium citrate.

All plasma used in the manufacture of Berinert is obtained from US donors and is tested using serological assays for hepatitis B surface antigen and antibodies to HIV-1/2 and HCV. Additionally, the plasma is tested with Nucleic Acid Testing (NAT) for HCV and HIV-1 and found to be non-reactive (negative). In addition, the plasma is tested by NAT for HAV and Human Parvovirus B19. Only plasma that has passed virus screening is used for production, and the limit for Parvovirus B19 in the fractionation pool is set not to exceed 10<sup>4</sup> IU of Parvovirus B19 DNA per mL.

The manufacturing process for Berinert includes multiple steps that reduce the risk of virus transmission. The virus inactivation/reduction capacity consists of three steps:

- Pasteurization in aqueous solution at 60°C for 10 hours,
- Hydrophobic interaction chromatography, and
- Virus filtration (also called nanofiltration) by two filters, 20 nm and 15 nm, in series.

This was evaluated in a series of *in vitro* spiking experiments. The total mean cumulative virus inactivation/reduction is shown in Table 5.

**Table 5: Mean Virus Inactivation/Reductions in Berinert**

Virus Studied	Pasteurization [log <sub>10</sub> ]	Hydrophobic Interaction Chromatography [log <sub>10</sub> ]	Virus Filtration [log <sub>10</sub> ]	Total Cumulative [log <sub>10</sub> ]
<b>Enveloped Viruses</b>				
HIV-1	≥6.6	≥4.5	≥5.1	≥16.2
BVDV	≥9.2	≥4.7	≥5.3	≥19.2
PRV	6.3	≥6.5	≥7.1	≥19.9
WNV	≥7.0	ND	≥8.0	≥15.0
<b>Non-Enveloped Viruses</b>				
HAV	≥6.4	2.8	≥5.3	≥14.5
CPV	1.4	6.4	≥7.2	≥15.0
B19V	3.9	ND	ND	NA

HIV-1, Human immunodeficiency virus type 1, a model for HIV-1 and HIV-2

BVDV, Bovine viral diarrhea virus, a model for HCV

PRV, Pseudorabies virus, a model for large enveloped DNA viruses

WNV, West Nile virus

HAV, Hepatitis A virus

CPV, Canine parvovirus

B19V, Human Parvovirus B19

ND, Not determined

NA, Not applicable

## 12 CLINICAL PHARMACOLOGY

### 12.1 Mechanism of Action

C1 esterase inhibitor is a normal constituent of human plasma and belongs to the group of serine protease inhibitors (serpins) that includes antithrombin III, alpha<sub>1</sub>-protease inhibitor, alpha<sub>2</sub>-antiplasmin, and heparin cofactor II. As with the other inhibitors in this group, C1 esterase inhibitor has an important inhibiting potential on several of the major cascade systems of the human body, including the complement system, the intrinsic coagulation (contact) system, the fibrinolytic system, and the coagulation cascade. Regulation of these systems is performed through the formation of complexes between the proteinase and the inhibitor, resulting in inactivation of both and consumption of the C1 esterase inhibitor.

C1 esterase inhibitor, which is usually activated during the inflammatory process, inactivates its substrate by covalently binding to the reactive site. C1 esterase inhibitor is the only known inhibitor for the subcomponent of the complement component 1 (C1r), C1s, coagulation factor XIIa, and kallikrein. Additionally, C1 esterase inhibitor is the main inhibitor for coagulation factor XIa of the intrinsic coagulation cascade.

HAE patients have low levels of endogenous or functional C1 esterase inhibitor. Although the events that induce attacks of angioedema in HAE patients are not well defined, it has been postulated that increased vascular permeability and the clinical manifestation of HAE attacks may be primarily mediated through contact system activation. Suppression of contact system activation by C1 esterase inhibitor through the inactivation of plasma kallikrein and factor XIIa is thought to modulate this vascular permeability by preventing the generation of bradykinin.<sup>5</sup>

Administration of Berinert to patients with C1 esterase inhibitor deficiency replaces the missing or malfunctioning protein in patients. The plasma concentration of C1 esterase inhibitor in healthy volunteers is approximately 270 mg/L.<sup>6</sup>

### 12.3 Pharmacokinetics

The pharmacokinetics of Berinert were evaluated in an open-label, uncontrolled, single-center study in 40 subjects (35 adults and 5 children under 16 years of age) with either mild or severe HAE. All subjects received a single intravenous injection of Berinert ranging from 500 units to 1500 units. Blood samples were taken during an attack-free period at baseline and for up to 72 hours after drug administration. Pharmacokinetic parameters were estimated using non-compartmental analysis (with or without baseline adjustment). Table 6 summarizes the pharmacokinetic parameters in 35 adult subjects with HAE.

**Table 6: Pharmacokinetic Parameters of Berinert in Adult Subjects with HAE by Non-compartmental Analysis (n=35)**

Parameters	Unadjusted for baseline	Adjusted for baseline
AUC <sub>(0-t)</sub> (hr x IU/mL)*	27.5 ± 8.5 (15.7-44.7)	12.8 ± 6.7 (3.9-34.7)
CL (mL/hr/kg)	0.60 ± 0.17 (0.34-0.96)	1.44 ± 0.67 (0.43-3.85)
V <sub>ss</sub> (mL/kg)	18.6 ± 4.9 (11.1-27.6)	35.4 ± 10.5 (14.1-56.1)
Half-life (hrs)	21.9 ± 1.7 (16.5-24.4)	18.4 ± 3.5 (7.4-22.8)
MRT (hrs)	31.5 ± 2.4 (23.7-35.2)	26.4 ± 5.0 (10.7-33.0)

AUC: Area under the curve

CL: Clearance

V<sub>ss</sub>: Volume steady state

MRT: Mean residence time

\*Based on a 15 unit/kg dose. Numbers in parenthesis are the range.

Table 7 summarizes the pharmacokinetic parameters in 5 pediatric subjects (ages 6 through 13) with HAE. When adjusted for baseline, compared to adults, the half-life of Berinert was shorter and clearance (on per kg basis) was faster in this limited cohort of children. However, the clinical implication of this difference is not known.

**Table 7: Pharmacokinetic Parameters of Berinert in Pediatric Subjects with HAE by Non-compartmental Analysis (n=5)**

Parameters	Unadjusted for baseline	Adjusted for baseline
AUC <sub>(0-t)</sub> (hr x IU/mL)*	25.45 ± 5.8 (16.8-31.7)	9.78 ± 4.37 (4.1-15.2)
CL (mL/hr/kg)	0.62 ± 0.17 (0.47-0.89)	1.9 ± 1.1 (0.98-3.69)
V <sub>ss</sub> (mL/kg)	19.8 ± 4.0 (16.7-26.1)	38.8 ± 8.9 (31.9-54.0)
Half-life (hrs)	22.4 ± 1.6 (20.3-24.4)	16.7 ± 5.8 (7.4-22.5)
MRT (hrs)	32.3 ± 2.3 (29.3-35.2)	24.0 ± 8.3 (10.7-32.4)

AUC: Area under the curve

CL: Clearance

V<sub>ss</sub>: Volume steady state

MRT: Mean residence time

\*Based on a 15 unit/kg dose. Numbers in parenthesis are the range.

Studies have not been conducted to evaluate the pharmacokinetics of Berinert in special patient populations identified by gender, race, geriatric age, or the presence of renal or hepatic impairment.

## 13 NONCLINICAL TOXICOLOGY

### 13.1 Carcinogenesis, Mutagenesis, Impairment of Fertility

No animal studies have been completed to evaluate the effects of Berinert on carcinogenesis, mutagenesis, and impairment of fertility.

### 13.2 Animal Toxicology and/or Pharmacology

Acute intravenous toxicity of Berinert was performed in mice at 1500, 3000, and 6000 units/kg and in rats at 1000, 2000, and 3000 units/kg. Berinert was well tolerated and no signs of toxicity were observed up to the highest dose administered.

Repeat intravenous dose toxicity was studied in a 14-day repeat dose study in rats at doses of 20, 60, and 200 units/kg/day. Berinert was well tolerated and no toxicity was observed up to the highest dose administered. No antibody response against C1 esterase inhibitor could be demonstrated in this study after multiple dosing with Berinert.

In a safety pharmacology study, Berinert was administered to beagle dogs intravenously at a cumulative dose of 3500 units/kg. No adverse effects were seen on the cardiovascular and respiratory system. There was a drop in body temperature, reduced coagulation time, and a decrease in thrombocyte aggregation.

Local intravenous tolerance of Berinert was evaluated in rabbits at 1500 units. No pathological changes were noted at the time of injection or during the following 24 hours. No pathological signs were noted during necropsy.

Thrombotic events have been reported in association with C1 esterase inhibitor products when used off-label and at higher than labeled doses<sup>1</sup> (see *Overdosage [10]*). Animal studies have confirmed the risk of thrombosis from intravenous administration of C1 esterase inhibitor products.<sup>2</sup>

## 14 CLINICAL STUDIES

The safety and efficacy of Berinert in the treatment of acute abdominal or facial attacks in subjects with hereditary angioedema were demonstrated in a placebo-controlled, double-blind, prospective, multinational, randomized, parallel-group, dose-finding, three-arm, clinical study, referred to as the randomized clinical trial (RCT). The RCT assessed the efficacy and safety of Berinert in 124 adult and pediatric subjects with C1 esterase inhibitor deficiency who were experiencing an acute moderate to severe attack of abdominal or facial HAE. Subjects ranged in age from six to 72 years of age; 67.7% were female and 32.3% were male; and approximately 90% were Caucasian.

The study objectives were to evaluate whether Berinert shortens the time to onset of relief of symptoms of an abdominal or facial attack compared to placebo and to compare the efficacy of two different doses of Berinert. The time to onset of relief of symptoms was determined



by the subject's response to a standard question posed at appropriate time intervals for as long as 24 hours after start of treatment, taking into account all single HAE symptoms. In addition the severity of individual HAE symptoms was assessed over time.

Subjects were randomized to receive a single 10 unit/kg body weight dose of Berinert (39 subjects), a single 20 unit/kg dose of Berinert (43 subjects), or a single dose of placebo (42 subjects) by slow intravenous infusion (recommended to be given at a rate of approximately 4 mL per minute) within 5 hours of an HAE attack. At least 70% of the subjects in each treatment group were required to be experiencing an abdominal attack.

If a subject experienced no relief or insufficient relief of symptoms by 4 hours after infusion, investigators had the option to administer a second infusion of Berinert (20 units/kg for the placebo group, 10 units/kg for the 10 units/kg group), or placebo (for the 20 units/kg group). This masked (blinded) "rescue study medication" was administered to subjects and they were then followed until complete resolution of symptoms was achieved. Adverse events were collected for up to 7 to 9 days following the initial administration of Berinert or placebo.

In the rare case that a subject developed life-threatening laryngeal edema after inclusion into the study, immediate start of open-label treatment with a 20 unit/kg body weight dose of Berinert was allowed.

All subjects who received confounding medication (rescue medication) before symptom relief were regarded as "non-responders." Therefore, time to onset of symptom relief was set at 24 hours if a subject received any rescue medication (ie, rescue study medication, narcotic analgesics, non-narcotic analgesics, anti-emetics, open-label C1 inhibitor, androgens at increased dose, or fresh frozen plasma) between 5 hours before administration of blinded study medication until time to onset of relief.

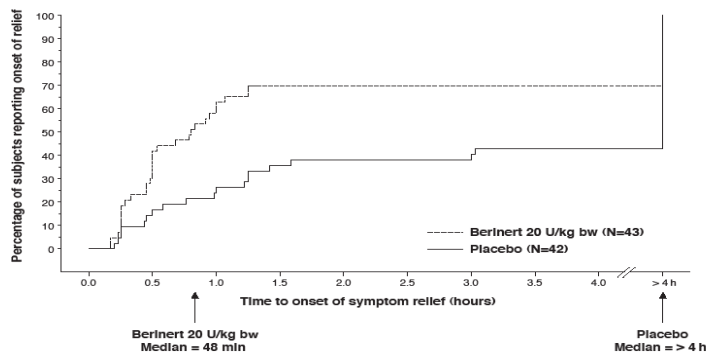
For the trial to be considered successful, the study protocol specified the following criteria for the differences between the Berinert 20 units/kg and the placebo group:

- The time to onset of relief of symptoms of the HAE attack had to achieve a one-sided p-value of less than 0.0249 for the final analysis, and at least one of the following criteria had to demonstrate a trend in favor of Berinert with a one-sided p-value of less than 0.1:
  - The proportion of subjects with increased intensity of clinical HAE symptoms between 2 and 4 hours after start of treatment with study medication compared to baseline, or
  - The number of vomiting episodes within 4 hours after start of study treatment.

Subjects treated with 20 units/kg body weight of Berinert experienced a significant reduction ( $p=0.0016$ ; “Wilcoxon Rank Sum test”) in time to onset of relief from symptoms of an HAE attack as compared to placebo (median of 48 minutes for Berinert 20 units/kg body weight, as compared to a median of >4 hours for placebo). The time to onset of relief from symptoms of an HAE attack for subjects in the 10 unit/kg dose of Berinert was not statistically significantly different from that of subjects in the placebo group.

Figure 9 is a Kaplan-Meier curve showing the percentage of subjects reporting onset of relief of HAE attack symptoms as a function of time. Individual time points beyond 4 hours are not presented on the graph, because the protocol permitted blinded rescue medication, analgesics, and/or anti-emetics to be administered starting 4 hours after randomized blinded study medication had been administered.

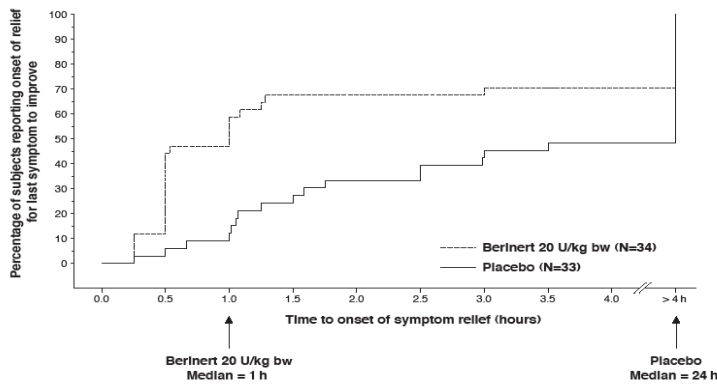
**Figure 9: Time to Onset of Symptom Relief With Imputation to >4 Hours for Subjects Who Received any Rescue Medication\* or Non-narcotic Analgesics Before Start of Relief**



\* Included rescue study medication (as blinded C1 inhibitor or placebo given as rescue medication), open-label C1 inhibitor, narcotic and non-narcotic analgesics, anti-emetics, androgens at increased dose, or fresh frozen plasma.

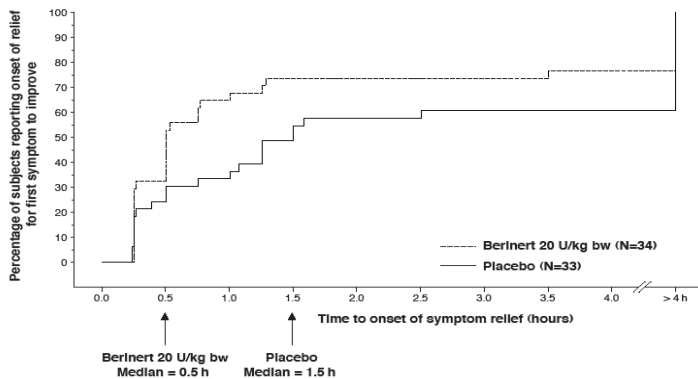
In addition, the efficacy of Berinert 20 units/kg body weight could be confirmed by observing a reduction in the intensity of single HAE symptoms at an earlier time compared to placebo. For abdominal attacks Figure 10 shows the time to start of relief of the *last* symptom to improve that was already present at baseline. Pre-defined abdominal HAE symptoms included pain, nausea, vomiting, cramps and diarrhea. Figure 11 shows the respective time to start of relief of the *first* symptom to improve that was already present at baseline.

**Figure 10: Time to Start of Relief of the *Last* Symptom to Improve (Abdominal Attacks) with Imputation to >4 Hours for Subjects Who Received any Rescue Medication\* Before Start of Relief**



\* Included rescue study medication (as blinded C1 inhibitor or placebo given as rescue medication), open-label C1 inhibitor, narcotic and non-narcotic analgesics, anti-emetics, androgens at increased dose, or fresh frozen plasma.

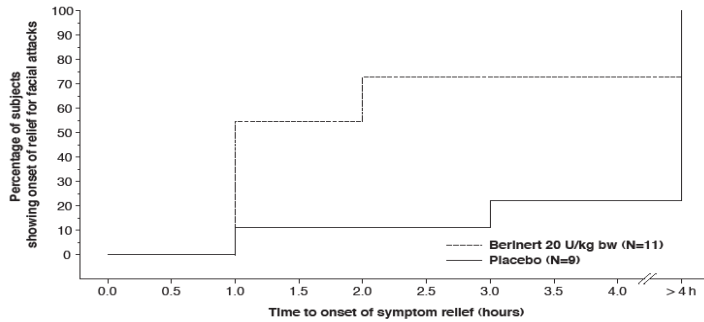
**Figure 11: Time to Start of Relief of the *First* Symptom to Improve (Abdominal Attacks) With Imputation to >4 Hours for Subjects Who Received Any Rescue Medication\* Before Start of Relief**



\* Included rescue study medication (as blinded C1 inhibitor or placebo given as rescue medication), open-label C1 inhibitor, narcotic and non-narcotic analgesics, anti-emetics, androgens at increased dose, or fresh frozen plasma.

For facial attacks, single HAE symptoms were recorded. In addition, photos were taken at pre-determined time points and assessed by the members of an independent Data Safety Monitoring Board (DSMB), who were blinded as to treatment, center and other outcome measures. The change in the severity of the edema when compared to baseline was assessed on a scale with outcomes "no change", "better", "worse" and "resolved". Figure 12 shows the time to start of relief from serial facial photographs by DSMB assessment.

**Figure 12: Time to Start of Relief From Serial Facial Photographs\***



\* Includes facial attacks in subjects with concomitant abdominal attacks.

Table 8 compares additional endpoints, including changes in HAE symptoms and use of rescue medication in subjects receiving Berinert at 20 units/kg body weight and placebo.

**Table 8: Changes in HAE Symptoms and Use of Rescue Medication in Subjects Receiving Berinert 20 units/kg Body Weight vs. Placebo**

<b>Additional Endpoints</b>	<b>Number (%) of Subjects Berinert 20 units/kg Body Weight Group (n=43)</b>	<b>Number (%) of Subjects Placebo Group (n=42)</b>
Onset of symptom relief within 60 minutes after administration of study medication ( <i>post-hoc</i> )	27 (62.8%)	11 (26.2%)
Onset of symptom relief within 4 hours after administration of study medication	30 (69.8%)	18 (42.9%)
Number of vomiting episodes within 4 hours after start of study treatment*	6 episodes	35 episodes
Worsened intensity of clinical HAE symptoms between 2 and 4 hours after administration of study medication compared to baseline†	0 (0%)	12 (28.6%)
Number (percent) of combined abdominal and facial attack subjects receiving rescue study medication, analgesics, or anti-emetics at any time prior to initial relief of symptoms	13 (30.2%)	23 (54.8%)
At least one new HAE symptom not present at baseline and starting within 4 hours after administration of study medication	2 (4.6%)	6 (14.3%)

\* p-value = 0.033

† p-value = 0.00008

Both the proportion of subjects with increased intensity of clinical HAE symptoms between 2 and 4 hours after start of treatment compared to baseline, and the number of vomiting episodes within 4 hours after start of study treatment demonstrated trends in favor of Berinert in comparison to placebo (p-values <0.1). Tables 9 through 12 present additional information regarding responses to treatment.

**Table 9: Proportion of Subjects Experiencing Start of Self-Reported Relief of Symptoms by 4 Hours by Attack Type**

<b>Attack Type</b>	<b>Berinert 20 units/kg Body Weight (Abdominal Subjects = 34) (Facial Subjects = 9) (Other subjects = 0)</b>	<b>Placebo Group (Abdominal Subjects = 33) (Facial Subjects = 8) (Other subjects = 1)*</b>
Abdominal	24 (70.6%)	15 (45.5%)
Facial	6 (66.7%)	3 (37.5%)

\* Laryngeal edema initially classified as facial edema.

**Table 10: Proportion of Subjects Experiencing Reduction in Severity of at Least One Individual HAE Attack Symptom by 4 Hours**

<b>Attack Type</b>	<b>Berinert 20 units/kg Body Weight (Abdominal Subjects = 34) (Facial Subjects = 9)</b>	<b>Placebo Group (Abdominal Subjects = 33) (Facial Subjects = 8)</b>
Abdominal	33 (97.1%)	29 (87.9%)
Facial	6 (66.7%)	4 (50%)

**Table 11: Proportion of Subjects with Facial Attacks Demonstrating Improvement in Serial Facial Photographs by 4 hours \***

<b>Attack Type</b>	<b>Berinert 20 units/kg Body Weight (Subjects = 9)</b>	<b>Placebo Group (Subjects = 8)</b>
Facial	7 (77.8%)	2 (25%)

\* Based on masked (blinded) evaluation by data safety monitoring board.

**Table 12: Proportion of Subjects with Abdominal and Facial Attacks Receiving Rescue Study Medication at any Time Prior to *Complete Relief of Symptoms***

Attack Type	Berinert 20 U/kg Body Weight (Abdominal Subjects = 34) (Facial Subjects = 9)	Placebo Group (Abdominal Subjects = 33) (Facial Subjects = 8)
Abdominal	7 (20.6%)	17 (51.5%)
Facial	1 (11.1%)	6 (75%)

No subjects treated with Berinert at 20 units/kg body weight reported worsening of symptoms at 4 hours after administration of study medication compared to baseline.

The study demonstrated that the Berinert 20 unit/kg body weight dose was significantly more efficacious than the Berinert 10 unit/kg body weight dose or placebo.

#### Open-Label Extension Study

Berinert was evaluated in a prospective, open-label, uncontrolled, multicenter extension study conducted at 15 centers in the US and Canada in subjects who had participated in the RCT study for the treatment of acute abdominal or facial attacks in subjects with hereditary angioedema.

The purpose of this extension study was to provide Berinert to subjects who had participated in the RCT study and who experienced any type of subsequent HAE attack (ie, abdominal, facial, peripheral, or laryngeal).

The safety analysis of the open-label extension study included a total of 57 subjects (19 males and 38 females, age range: 10 to 53 years) with 1085 HAE attacks treated with 20 unit/kg body weight dose of Berinert per attack, who were observed at the study site until onset of relief of HAE symptoms, and were followed up for adverse reactions for 7 to 9 days following treatment of each HAE attack (see [Adverse Reactions, Clinical Trials Experience \[6.1\]](#)). During the extension study, 51 subjects experienced 747 abdominal attacks, 21 subjects experienced 51 facial attacks, 30 subjects experienced 235 peripheral attacks, and 16 subjects experienced 48 laryngeal attacks. Some study subjects may have experienced HAE attacks in more than one location.

An analysis of laryngeal HAE attacks showed that the median time to initial onset of symptom relief and median time to complete resolution in the per-attack analysis were 0.25 hours and 8.4 hours, respectively (Table 13) which were the shortest times among the various attack locations.

**Table 13: Time to Initial Onset of Symptom Relief and Time to Complete Resolution of HAE Symptoms for Laryngeal Attacks**

Statistic	Laryngeal (n=48)
<b>Time to initial onset of symptom relief [hours]</b>	
Median (range)	0.25 (0.10 - 1.25)
95% CI for median	[0.23; 0.42]
<b>Time to complete resolution of HAE symptoms [hours]</b>	
Median (range)	8.4 (0.6 - 61.8*)
95% CI for median	[6.2; 21.5]

CI = confidence interval

HAE = hereditary angioedema

N = number of attacks

\* The maximum time to complete resolution of 61.8 hours was an imputed value. Subject 29301 had 2 laryngeal attacks with missing times to complete resolution of HAE symptoms, which were imputed with the maximum time to complete resolution of HAE symptoms observed for an abdominal attack in this subject.

There were no clinically relevant or consistent data suggesting that gender, age group, race/ethnic group, type of HAE, routine use of androgens, or presence of detectable anti-C1 Esterase Inhibitor antibodies had an effect on the time to initial or complete relief of symptoms following Berinert.

The prospective open-label extension study demonstrated that, in comparison to untreated historical control data retrospectively collected at a study center in Germany over a 20 year period<sup>7</sup>, the Berinert 20 U/kg body weight dose appeared to be effective in ameliorating laryngeal HAE attacks by achieving complete resolution of HAE symptoms within 24 hours from attack onset in the majority of subjects. The treatment effects observed with Berinert in the extension study are consistent with the findings from the placebo-controlled efficacy trial.

## 15 REFERENCES

1. German Medical Profession's Drugs Committee. Severe thrombus formation of Berinert<sup>®</sup> HS. *Deutsches Ärzteblatt*. 2000;97:B-864.
2. Horstick, G *et al.* Application of C1-Esterase Inhibitor During Reperfusion of Ischemic Myocardium: Dose-Related Beneficial Versus Detrimental Effects. *Circulation*. 2001;104:3125-3131.
3. Carrell RW, Boswell DR. Serpins: the superfamily of plasma serine proteinase inhibitors. In: Barrett A, Salvesen G, eds. *Proteinase Inhibitors*. Amsterdam: Elsevier. 1986;12:403-420.
4. Harrison RA. Human C1 inhibitor: Improved isolation and preliminary structural characterization. *Biochemistry* 1983;22:5001-5007.



5. Davis AE, The pathophysiology of hereditary angioedema. *Clin Immunol.* 2005;114:3-9.
6. Nuijens JH, Eerenberg-Belmer AJM, Huijbregts CCM, et al. Proteolytic inactivation of plasma C1 inhibitor in sepsis. *J Clin Invest.* 1989;84:443-450.
7. Bork K, Barnstedt SE. Treatment of 193 Episodes of Laryngeal Edema with C1 Inhibitor Concentrate in Patients with Hereditary Angioedema. *Arch Intern Med.* 2001;161:714-718.

## 16 HOW SUPPLIED/STORAGE AND HANDLING

### 16.1 How Supplied

Berinert is supplied in a single-use vial. Each carton contains a 500 unit vial of Berinert for reconstitution with 10 mL of diluent containing sterile water (meets USP chemistry requirements except for pH; pH 4.5-8.5). The components used in the packaging for Berinert are latex-free.

Each product package consists of the following:

NDC Number	Component
63833-825-02	Carton (kit) containing one 500 unit vial of Berinert [NDC 63833-835-01], one 10 mL vial of diluent (sterile water) [NDC 63833-765-15], one Mix2Vial filter transfer set, and one alcohol swab.

### 16.2 Storage and Handling

When stored at temperatures of 2-25°C (36-77°F), Berinert is stable for the period indicated by the expiration date on the carton and vial label (up to 30 months). Keep Berinert in its original carton until ready to use. Do not freeze. Protect from light.

## 17 PATIENT COUNSELING INFORMATION

See FDA-approved patient labeling ([Patient Product Information](#)).

### Inform patients to immediately report the following to their physician:

- Signs and symptoms of allergic hypersensitivity reactions, such as hives, urticaria, tightness of the chest, wheezing, hypotension and/or anaphylaxis experienced during or after injection of Berinert (*see [WARNINGS AND PRECAUTIONS/Hypersensitivity \[5.1\]](#)*)
- Signs and symptoms of thrombosis, such as new onset swelling and pain in the limbs or abdomen, new onset chest pain, shortness of breath, loss of sensation or motor power, or altered consciousness, vision, or speech (*see [WARNINGS AND PRECAUTIONS/Thrombotic Events \[5.2\]](#)*)

Advise female patients to notify their physician if they become pregnant or intend to become pregnant during the treatment of acute abdominal or facial attacks of HAE with Berinert.

Advise patients to notify their physician if they are breastfeeding or plan to breastfeed.

Advise patients to consult with their healthcare professional prior to travel.

Advise patients/caregivers to bring an adequate supply of Berinert when traveling.

Advise patients to bring Berinert with them when they visit a healthcare provider/facility for an acute HAE attack.

Advise patients that, because Berinert is made from human blood, it may carry a risk of transmitting infectious agents, eg, viruses, and, theoretically, the Creutzfeldt-Jakob (CJD) agent (*see [WARNINGS AND PRECAUTIONS/Transmission of Infectious Agents \[5.3\]](#) and [Description \[11\]](#)*). Inform patients of the risks and benefits of Berinert before prescribing or administering it to the patient.

**Self-administration** — Ensure that the patient (or caregiver) is an appropriate candidate for self-administration, this includes, but not limited to a determination that:

- The patient (or caregiver) is reliably able to recognize the signs and symptoms of their HAE attacks.
- The patient (or caregiver) has the necessary dexterity and comprehension to be trained to self-administer.

If self-administration is deemed appropriate, ensure that the patient/caregiver receives clear instructions and training on intravenous administration in the home or other appropriate setting and has demonstrated the ability to perform intravenous infusions.

- Ensure the patients/caregivers understand the importance of not starting self-administration if the attack (regardless of type) has progressed to a point that the patient/caregiver would be unable to successfully prepare or administer Berinert.
- Given the potential for airway obstruction during acute laryngeal HAE attacks, patients self-administering Berinert should be advised to immediately seek medical attention in an appropriate healthcare facility in addition to treatment with Berinert.
- To help exclude the possibility that another potentially serious medical cause may be responsible for their symptoms, advise patients self-administering Berinert to contact their healthcare provider after treating suspected abdominal HAE attacks.
- Instruct patients/caregivers to record the lot number from the Berinert vial label every time they use Berinert.

The attached BERINERT “Patient Product Information (PPI)” contains more detailed instructions for patients/caregivers who will be self-administering BERINERT.

---

## **FDA-Approved Patient Labeling – Patient Product Information (PPI)**

### **BERINERT (BEAR-ĭ-nerť) C1 Esterase Inhibitor (Human) Freeze-Dried Powder for Reconstitution**

This leaflet summarizes important information about BERINERT. Please read it carefully before using BERINERT and each time you get a refill. There may be new information provided. This information does not take the place of talking with your healthcare provider, and it does not include all of the important information about BERINERT. If you have any questions after reading this, ask your healthcare provider.

**Do not attempt to self-administer unless you have been taught how by your healthcare provider.**

#### **What is BERINERT?**

BERINERT is an injectable medicine used to treat swelling and/or painful attacks in adults and adolescents with Hereditary Angioedema (HAE). HAE is caused by the poor functioning or lack of a protein called C1 that is present in your blood and helps control inflammation (swelling) and parts of the immune system. BERINERT contains C1 esterase inhibitor, a protein that helps control C1.

#### **Who should not use BERINERT?**

You should not use BERINERT if you have experienced life-threatening immediate hypersensitivity reactions, including anaphylaxis to the product.

#### **What should I tell my healthcare provider before using BERINERT?**

Tell your healthcare provider about all of your medical conditions, including if you:

- Are pregnant or planning to become pregnant. It is not known if BERINERT can harm your unborn baby.
- Are breastfeeding or plan to breastfeed. It is not known if BERINERT passes into your milk and if it can harm your baby.

- Have a history of blood clotting problems. Blood clots (thrombosis) have occurred in patients receiving large amounts of BERINERT. Very high doses of C1 esterase inhibitor could increase the risk of blood clots.

Tell your healthcare provider and pharmacist about all of the medicines you take, including all prescription and non-prescription medicines such as over-the-counter medicines, supplements, or herbal remedies.

### **What are the possible side effects of BERINERT?**

**Allergic reactions may occur with BERINERT. Call your healthcare provider or seek emergency support services right away if you have any of the following symptoms after using BERINERT:**

- **wheezing**
- **difficulty breathing**
- **chest tightness**
- **turning blue (look at lips and gums)**
- **fast heartbeat**
- **swelling of the face**
- **faintness**
- **rash**
- **hives**

Signs of a blood clot include:

- new onset of swelling and pain in the limbs or abdomen
- new onset of chest pain
- shortness of breath
- loss of sensation or control of muscles/muscle weakness on one side of the body
- altered consciousness, vision, or speech.

In clinical studies, the most serious adverse reaction reported in subjects who received BERINERT was an increase in the severity of pain associated with HAE.

In clinical studies, the most common adverse reaction reported among subjects who received Berinert in the placebo-controlled clinical trial was dysgeusia (bad taste in mouth).

Because BERINERT is made from human blood, it may carry a risk of transmitting infectious agents, eg, viruses, and, theoretically, the Creutzfeldt-Jakob (CJD) agent.

These are not all the possible side effects of BERINERT.

Tell your healthcare provider about any side effect that bothers you or that does not go away. You can also report side effects to the FDA at 1-800-FDA-1088.

**How should I store BERINERT?**

- Keep BERINERT in its original carton to protect from light until ready to use.
- When stored at temperatures of 2-25°C (36-77°F), BERINERT is stable for the period indicated by the expiration date on the carton and vial label.
- Do not freeze.

**What else should I know about BERINERT?**

Medicines are sometimes prescribed for purposes other than those listed here. Do not use BERINERT for a condition for which it is not prescribed. Do not share BERINERT with other people, even if they have the same symptoms that you have.

This leaflet summarizes the most important information about BERINERT. If you would like more information, talk to your healthcare provider. You can ask your healthcare provider or pharmacist for information about BERINERT that was written for healthcare professionals. For more information, go to [www.BERINERT.com](http://www.BERINERT.com) or call 1-877-236-4423.

**What are the symptoms of a facial, abdominal or laryngeal Hereditary Angioedema (HAE) attack?**

Early HAE symptoms appear anywhere from minutes to one to two days before the attack worsens. HAE attacks can last hours to several days, and range in severity. Itching is not a typical feature of HAE attacks.

**Facial attacks** — These attacks can occur in areas around the eyes and mouth, and result from local edema of tissue beneath the skin (subcutaneous).

**Abdominal attacks** — These attacks appear as pain (colic), nausea, vomiting, and/or diarrhea. These symptoms result from the swelling of walls of the gastrointestinal tract.

**Laryngeal attacks** — Swelling of the voice box (laryngeal edema) can occur by itself, or with swelling of the lips, tongue, uvula (the piece of mouth tissue that hangs down from the top of the mouth over the back of the tongue), and soft palate (the soft tissue at the back of the mouth). Removing a tooth and oral surgery can trigger a laryngeal attack. Laryngeal swelling can develop in minutes or hours.

Many HAE attacks involve only one location of the body at a time, although combination attacks, such as cutaneous attacks that spread to involve the larynx (the voice box), can occur.

### **What other diseases or symptoms could resemble a HAE attack?**

Some abdominal-related causes that can appear as an HAE attack include:

- Appendicitis
- Heartburn
- Gall bladder attack
- Diverticulitis
- Pancreatitis
- Stomach ulcer
- General abdominal distress

Other symptoms that can appear as an HAE attack include:

- Allergic reactions (eg, insect bites and rash)

### **What should I know about self-administration?**

- At the first symptoms of an attack, you should immediately prepare the prescribed dose of BERINERT for self-administration.
- You should not start self-administration if the attack (regardless of type) has progressed to a point where you are unable to successfully dissolve BERINERT or to administer BERINERT.

### **Instructions for Use**



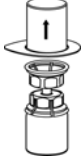

- **Do not attempt to self-administer unless you have been taught how by your healthcare provider.**
- **See the step-by-step instructions for injecting BERINERT at the end of this leaflet.** You should always follow the specific instructions given by your healthcare provider. The steps listed below are general guidelines for using BERINERT. If you are unsure of the steps, please contact your healthcare provider or pharmacist before using.
- Your healthcare provider will prescribe the dose that you should administer, which is based on your body weight.
- After self-administering Berinert for an acute laryngeal HAE attack, immediately seek medical attention in an appropriate healthcare facility after treatment with Berinert.
- Contact your healthcare provider after treating suspected abdominal HAE attacks to help exclude the possibility that another potentially serious medical cause may be responsible for your symptoms.
- **Call your healthcare provider right away if swelling is not controlled after using BERINERT.**
- Bring Berinert with you when you visit a healthcare provider/facility for an acute HAE attack.
- Talk to your healthcare provider before traveling to make sure you have an adequate supply of BERINERT.





## Reconstitution and Administration

- Each BERINERT carton contains one single-use vial of BERINERT, one 10 mL vial of diluent (sterile water), one Mix2Vial transfer set, and one alcohol swab to clean the vial.
- Check the expiration date on the product vial label. Do not use beyond the expiration date.
- Use either the Mix2Vial transfer set provided with BERINERT or a commercially available double-ended needle and vented filter spike.
- Use sterile technique when preparing and administering BERINERT.
- After reconstitution and prior to administration inspect BERINERT. The reconstituted solution should be colorless, clear, and free from visible particles. Do not use if the solution is cloudy, discolored, or contains particulates.

## Reconstitution

The procedures below are provided as general guidelines for the reconstitution of BERINERT.

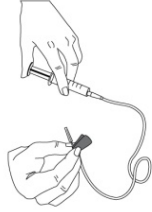

1. Ensure that the Berinert vial and diluent vial are at room temperature. Use aseptic technique during the reconstitution procedure.	
2. Place the Berinert vial, diluent vial and Mix2Vial transfer set on a flat surface.	
3. Remove the flip caps from the Berinert and diluent vials. Treat the vial stoppers with the alcohol swab provided and allow to dry prior to opening the Mix2Vial transfer set package.	
4. Open the Mix2Vial transfer set package by peeling away the lid (Figure 1). Leave the Mix2Vial transfer set in the clear package.	 Figure 1
5. Place the diluent vial on a flat surface and hold the vial tightly. Grip the Mix2Vial transfer set together with the clear package and push the plastic spike at the blue end of the Mix2Vial transfer set firmly through the center of the stopper of the diluent vial (Figure 2).	 Figure 2
6. Carefully remove the clear package from the Mix2Vial transfer set. Make sure that you pull up only the clear package, and not the Mix2Vial transfer set (Figure 3).	 Figure 3
7. With the Berinert vial placed firmly on a flat surface, invert the diluent vial with the Mix2Vial transfer set attached and push the plastic spike of the transparent adapter firmly through the center of the stopper of the Berinert vial (Figure 4). The diluent will automatically transfer into the Berinert vial.	 Figure 4

<p>8. With the diluent and Berinert vial still attached to the Mix2Vial transfer set, gently swirl the Berinert vial to ensure that the Berinert is fully dissolved (Figure 5). Do not shake the vial.</p>	 <p>Figure 5</p>
<p>9. With one hand, grasp the Berinert-side of the Mix2Vial transfer set and with the other hand grasp the blue diluent-side of the Mix2Vial transfer set and unscrew the set into two pieces (Figure 6).</p>	 <p>Figure 6</p>
<p>10. Carefully look at reconstituted solution in each vial of Berinert. It should be colorless, clear, and free from visible particles. <b>Do not use the vial if</b> the liquid looks cloudy, contains particles, or has changed color. Do not use if the expiration date on the label has expired.</p>	
<p>11. Draw air into an empty, sterile syringe. While the Berinert vial is upright, screw the syringe to the Mix2Vial transfer set. Inject air into the Berinert vial. While keeping the syringe plunger pressed, invert the system upside down and draw the concentrate into the syringe by pulling the plunger back slowly (Figure 7).</p>	 <p>Figure 7</p>
<p>12. Now that the concentrate has been transferred into the syringe, firmly grasp the barrel of the syringe (keeping the plunger facing down) and unscrew the syringe from the Mix2Vial transfer set (Figure 8). Attach the syringe to a suitable intravenous (IV) administration set.</p>	 <p>Figure 8</p>
<p>13. If the same patient is to receive more than one vial, the contents of multiple vials may be pooled in a single administration device (eg, syringe). A new unused Mix2Vial transfer set should be used for each Berinert vial.</p>	
<p>14. Do not refrigerate after reconstitution. When reconstitution is carried out using aseptic technique, administration may begin within 8 hours, provided the solution has been stored at up to 25°C (77°F). Do not refrigerate or freeze the reconstituted solution.</p>	



## **SELF-ADMINISTRATION (Intravenous Infusion)**

Your healthcare provider will teach you how to safely administer BERINERT. It is important that BERINERT is injected directly into a visible vein. Do not inject into surrounding tissues or into an artery. Once you learn how to self-administer, follow the instructions provided below.

<p><b>Step 1: Assemble supplies</b></p> <p>Gather the BERINERT syringe, the following disposable supplies (not provided with BERINERT), and other items (sharps or other container, treatment diary or log book):</p> <ul style="list-style-type: none"><li>• Standard butterfly catheter infusion set (IV administration set with winged adapter and needle)</li><li>• Sterile syringe</li><li>• Tourniquet</li><li>• Sterile gauze and tape, or transparent dressing</li><li>• Bandage (adhesive dressing)</li><li>• Gloves (if recommended by your healthcare provider)</li><li>• Alcohol wipe for cleaning the skin</li></ul>	
<p><b>Step 2: Wash hands</b></p> <ul style="list-style-type: none"><li>• Thoroughly wash and dry your hands.</li><li>• If you have been told to wear gloves when preparing your infusion, put the gloves on.</li></ul>	
<p><b>Step 3: Clean surface</b></p> <p>Thoroughly clean a table or other flat surface using one or more of the alcohol wipes.</p>	
<p><b>Step 4: Prime the infusion set</b></p> <p>As instructed by your healthcare provider:</p> <ul style="list-style-type: none"><li>• To prime (fill) the infusion tubing, connect the syringe filled with Berinert to the infusion set tubing and gently push on the syringe plunger to fill the tubing with Berinert (Figure 9).</li></ul>	 <p>Figure 9</p>
<p><b>Step 5: Prepare the infusion site</b></p> <ul style="list-style-type: none"><li>• Apply a tourniquet above the site of the infusion.</li><li>• Prepare the infusion site by wiping the skin well with an alcohol swab and allow it to dry (Figure 10).</li></ul>	 <p>Figure 10</p>

**Step 6: Infusion**

As instructed by your healthcare provider:

- Insert the butterfly needle of the infusion set tubing into your vein (Figure 11).
- If necessary, use sterile gauze and tape or transparent dressing to hold the needle in place.
- To make sure that the needle is in a vein, gently pull back on the syringe plunger and check to see if blood is in the tubing (Figure 12). If there is blood present, then the needle is in a vein. If there is no blood present, remove the needle and repeat this step using a new needle, new administration tubing, and a different injection site.
- Remove the tourniquet.
- Inject the BERINERT solution slowly at a rate of approximately 4 mL per minute (Figure 13).



Figure 11



Figure 12

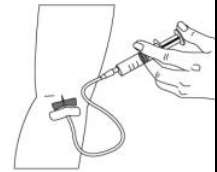


Figure 13

**Step 7: Clean up**

- After infusing the entire amount of BERINERT, remove the infusion set (Figure 14) and cover the infusion site with a bandage (Figure 15), holding pressure on the site for a few minutes.
- Dispose of all unused solution, the empty vials, and the used needles and syringe in an appropriate container used for throwing away waste that might hurt others if not handled properly.

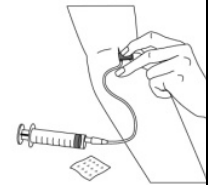


Figure 14



Figure 15

**Step 8: Record treatment**

- Record the lot number from the BERINERT vial label in your treatment diary or log book with the date and time of infusion every time you use BERINERT.

**This Patient Package Insert has been approved by the US Food and Drug Administration.**

Manufactured by:  
**CSL Behring GmbH**  
35041 Marburg, Germany  
US License No. 1765

Distributed by:  
**CSL Behring LLC**  
Kankakee, IL 60901 USA

Mix2Vial is a trademark of West Pharmaceuticals Services, Inc.