

State of Colorado  
Department of Public Health and Environment

**RADIOACTIVE MATERIALS LICENSE**

Annex A  
Perimeter Fence Metes and Bounds Description (South Area)

Commencing at the South ¼ of Section 9, being a GLO Brass Cap, from whence the Southwest corner of said Section 9 bears S 89° 01'57"W a distance of 2652.89 feet, said line forming the Basis of Bearing for this description; thence S 89° 24'00"E a distance of 26.67 feet to an existing fence corner, said point being the Point of Beginning. Thence along an existing fence line the following (52) fifty-two courses:

1. thence N 82°00'02" E a distance of 1436.22 feet
2. thence S 30°57'42" E a distance of 954.97 feet;
3. thence S 35°13'18" E a distance of 930.91 feet;
4. thence S 37°59'30" W a distance of 476.71 feet;
5. thence S 07°26'55" W a distance of 698.33 feet;
6. thence S 51°26'07" W a distance of 38.63 feet;
7. thence S 61°22'14" W a distance of 41.69 feet;
8. thence S 60°29'31" W a distance of 99.83 feet;
9. thence S 57°12'05" W a distance of 87.66 feet;
10. thence S 05°22'39" W a distance of 130.45 feet;
11. thence S 06°31'49" E a distance of 513.41 feet;
12. thence S 78°45'46" E a distance of 469.98 feet;
13. thence S 03°10'19" E a distance of 306.96 feet;
14. thence S 58°56'38" W a distance of 681.37 feet;
15. thence S 50°39'07" W a distance of 319.68 feet;
16. thence S 44°13'22" W a distance of 363.64 feet;
17. thence S 00°18'37" E a distance of 152.17 feet;
18. thence S 19°38'35" W a distance of 29.50 feet;
19. thence S 34°17'20" W a distance of 50.31 feet;
20. thence S 47°31'08" W a distance of 96.60 feet;
21. thence S 44°45'27" W a distance of 39.94 feet;
22. thence S 41°50'56" W a distance of 49.86 feet;
23. thence S 33°58'14" W a distance of 39.42 feet;
24. thence S 25°08'49" W a distance of 8.31 feet;
25. thence S 16°00'35" W a distance of 13.00 feet;
26. thence S 07°14'46" W a distance of 8.27 feet;
27. thence S 04°23'27" E a distance of 18.72 feet;
28. thence S 13°02'56" E a distance of 10.15 feet;
29. thence S 20°57'35" E a distance of 59.71 feet;
30. thence S 26°07'04" E a distance of 79.67 feet;
31. thence S 16°15'33" E a distance of 155.69 feet;
32. thence S 83°08'41" W a distance of 1166.75 feet;
33. thence N 58°27'24" W a distance of 1396.03 feet;
34. thence N 49°23'41" W a distance of 1909.64 feet;
35. thence N 01°08'05" W a distance of 3194.96 feet;
36. thence N 00°59'52" W a distance of 34.73 feet;

State of Colorado  
Department of Public Health and Environment

**RADIOACTIVE MATERIALS LICENSE**

37. thence N 04°40'44" E a distance of 28.91 feet;
38. thence S 80°19'21" E a distance of 64.02 feet;
39. thence S 77°28'54" E a distance of 315.51 feet;
40. thence S 73°22'46" E a distance of 212.51 feet;
41. thence S 68°45'24" E a distance of 365.64 feet;
42. thence S 65°30'57" E a distance of 99.79 feet;
43. thence S 41°32'39" E a distance of 50.25 feet;
44. thence S 23°25'49" E a distance of 49.44 feet;
45. thence S 00°52'47" E a distance of 99.43 feet;
46. thence S 13°38'36" W a distance of 99.73 feet;
47. thence S 78°57'29" E a distance of 200.78 feet;
48. thence N 11°14'56" E a distance of 314.03 feet;
49. thence N 68°45'12" W a distance of 439.42 feet;
50. thence N 30°34'03" W a distance of 30.52 feet;
51. thence N 08°54'36" E a distance of 177.56 feet;
52. thence N 89°01'09" E a distance of 1779.49 feet to the Point of Beginning, containing 487.75 acres, more or less.

Total fence length = 20,391 linear feet, more or less.

**Perimeter Fence Metes and Bounds Description (North Area)**

Commencing at the South ¼ corner of Section 9, being a GLO Brass Cap, from whence the Southwest corner of said Section 9 bears S 89° 01'57"W a distance of 2652.89 feet, said line forming the Basis of Bearing for this description; thence S 88° 59'43"W a distance of 1,752.83 feet to an existing fence corner, said point being the Point of Beginning. Thence S 89° 28'12"W a distance of 167.20 feet to a found property corner, said point being the southwest corner of Tract A, Shadow Hills Golf Club Inc.; thence along the northwesterly line of said Tract A the following four courses:

1. thence N 64°40'37" E a distance of 614.12 feet;
2. thence N 39°43'49" E a distance of 592.75 feet to a found property corner;
3. thence N 59°46'39" E a distance of 644.41 feet to a found property corner;
4. thence N 48°36'44" E a distance of 541.88 feet to a found property corner;

thence N 00°29'19 W a distance of 2844.32 feet to an existing fence corner; thence along an existing fenceline the following twenty-six (26) courses:

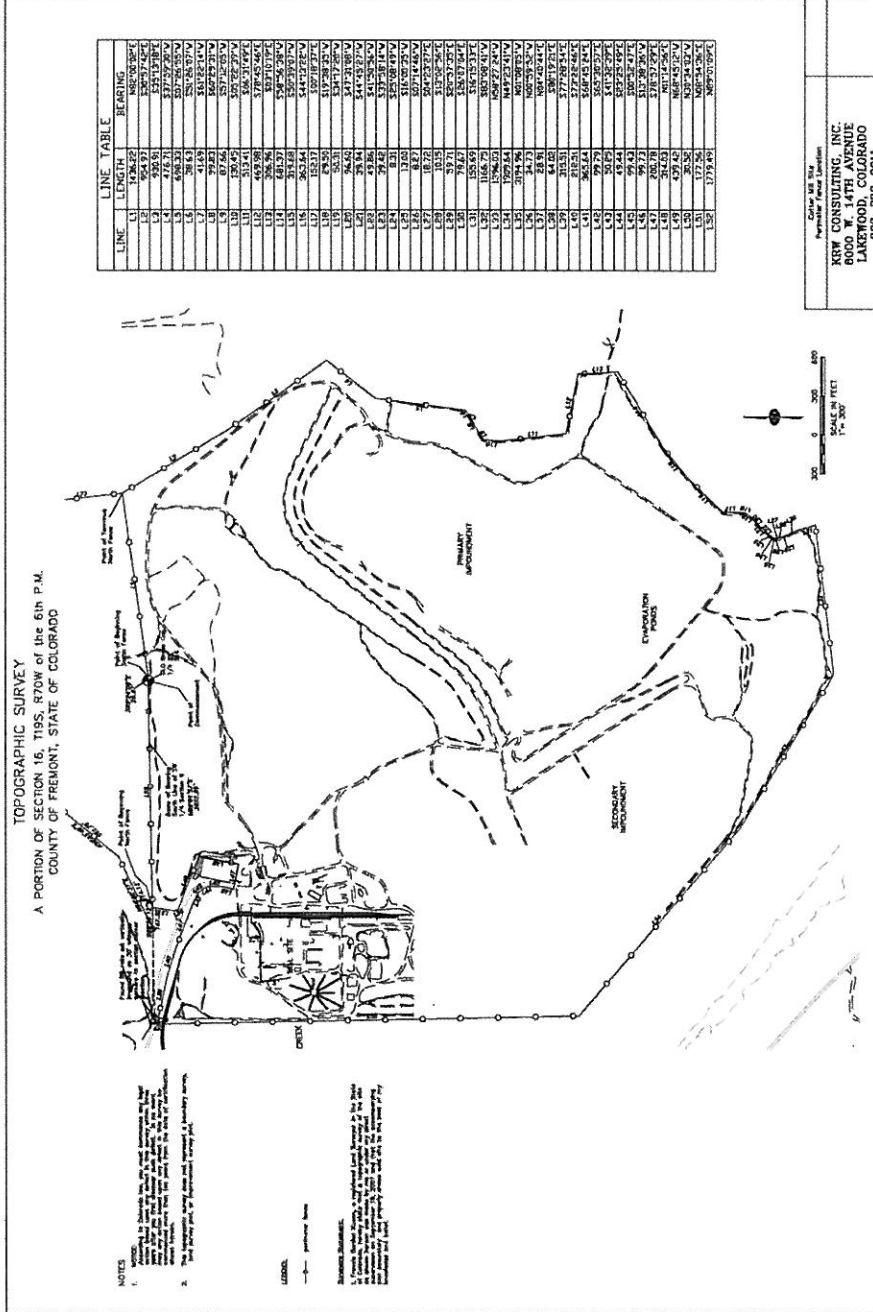
1. thence N 89°42'50" E a distance of 2633.15 feet;
2. thence S 40°25'54" E a distance of 63.38 feet;
3. thence S 00°26'48" E a distance of 159.54 feet;
4. thence S 00°12'41" E a distance of 276.29 feet;
5. thence S 00°16'35' W a distance of 186.41 feet;
6. thence S 08°48'29" W a distance of 95.71 feet;
7. thence S 00°12'46" E a distance of 549.03 feet;

State of Colorado  
Department of Public Health and Environment

**RADIOACTIVE MATERIALS LICENSE**

8. thence N 76°46'38" W a distance of 390.37 feet;
9. thence S 70°17'43" W a distance of 77.54 feet;
10. thence S 80°13'06" W a distance of 118.49 feet;
11. thence S 87°39'54" W a distance of 79.47 feet;
12. thence S 48°44'57" W a distance of 231.49 feet;
13. thence S 05°38'07" E a distance of 470.54 feet;
14. thence S 22°45'53" W a distance of 290.65 feet;
15. thence S 66°11'46" W a distance of 273.65 feet;
16. thence S 27°55'45" W a distance of 173.01 feet;
17. thence S 22°58'04" W a distance of 238.79 feet;
18. thence S 19°19'18" W a distance of 189.80 feet;
19. thence S 10°45'58" W a distance of 13.81 feet;
20. thence S 13°20'20" E a distance of 23.71 feet;
21. thence S 17°04'33" E a distance of 237.77 feet;
22. thence S 07°28'41" E a distance of 226.85 feet;
23. thence S 26°51'28" E a distance of 83.34 feet;
24. thence S 48°00'33" E a distance of 4.71 feet;
25. thence S 23°02'03" W a distance of 16.47 feet;
26. thence S 06°40'33" E a distance of 623.90 feet to an existing fence corner, said point being the point of terminus for this legal description, said point also being N 82° 09'25" E a distance of 1462.60 feet from the S ¼ corner of said Section 9. Total area = 206.04 acres, more or less. Total fence length = 13,720.73 linear feet, more or less.

State of Colorado  
 Department of Public Health and Environment  
**RADIOACTIVE MATERIALS LICENSE**



State of Colorado  
 Department of Public Health and Environment  
**RADIOACTIVE MATERIALS LICENSE**

