

Roy Lichtenstein: A Retrospective

October 14, 2012 - January 13, 2013

Important: The images displayed on this page are for reference only and are not to be reproduced in any media. To obtain images and permissions for print or digital reproduction please provide your name, press affiliation and all other information as required (*) utilizing the order form at the end of this page.

Digital images will be sent via e-mail.

Please include a brief description of the kind of press coverage planned and your phone number so that we may contact you.

Usage: Images are provided exclusively to the press, and only for purposes of publicity for the duration of the exhibition at the National Gallery of Art. All published images must be accompanied by the credit line provided and with copyright information, as noted.

Cat. No. 1 / File Name: 3287-012.jpg

Roy Lichtenstein

Untitled, 1959

oil on canvas

overall: 86.5 x 71.3 cm (34 1/16 x 28 1/16 in.)

Private collection

© Estate of Roy Lichtenstein



Cat. No. 2

Roy Lichtenstein

Untitled, c. 1959

oil on canvas

overall: 81.5 x 61.3 cm (32 1/16 x 24 1/8 in.)

Private collection

Cat. No. 3

Roy Lichtenstein

Untitled, c. 1960

oil on canvas

overall: 60.3 x 50.8 cm (23 3/4 x 20 in.)

Private collection

Cat. No. 4

Roy Lichtenstein

Brushstroke with Still Life IV, 1996

oil and Magna on canvas

overall: 86.4 x 71.1 cm (34 x 28 in.)

Courtesy of Gagosian Gallery

Cat. No. 5

Roy Lichtenstein

Brushstroke Abstraction I, 1996

oil and Magna on canvas

overall: 66 x 81.3 cm (26 x 32 in.)

Private collection

Cat. No. 6
Roy Lichtenstein
Brushstroke Abstraction II, 1996
oil and Magna on canvas
overall: 76.2 x 68.6 cm (30 x 27 in.)
Private collection

Cat. No. 7
Roy Lichtenstein
Brushstroke with Still Life VII, 1996
oil and Magna on canvas
overall: 76.2 x 76.2 cm (30 x 30 in.)
Lenhardt Collection, Arizona

Cat. No. 8 / File Name: 3287-002.jpg
Roy Lichtenstein
Look Mickey, 1961
oil on canvas
Overall: 121.9 x 175.3 cm (48 x 69 in.)
framed: 123.5 x 176.9 x 5.1 cm (48 5/8 x 69 5/8 x 2 in.)
National Gallery of Art, Washington, Gift of Roy and Dorothy Lichtenstein in Honor of the 50th Anniversary of the National Gallery of Art
© Board of Trustees, National Gallery of Art, Washington



Cat. No. 10
Roy Lichtenstein
Step-on Can with Leg, 1961
oil on canvas
panel: 82.6 x 67.3 cm (32 1/2 x 26 1/2 in.)
Fondation Louis Vuitton Pour la Creation

Cat. No. 11 / File Name: 3287-253.jpg
Roy Lichtenstein
Keds, 1961
oil on canvas
overall: 123.2 x 88.3 cm (48 1/2 x 34 3/4 in.)
The Robert B. Mayer Family Collection, Chicago
© Estate of Roy Lichtenstein



Cat. No. 12 / File Name: 3287-023.jpg
Roy Lichtenstein
The Ring (Engagement), 1962
oil on canvas
overall: 121.9 x 177.8 cm (48 x 70 in.)
Stefan T. Edlis Collection
© Estate of Roy Lichtenstein



Cat. No. 14
Roy Lichtenstein
Spray, 1962
oil on canvas
overall: 91.5 x 173.5 cm (36 x 68 in.)
Staatsgalerie Stuttgart

Cat. No. 15
Roy Lichtenstein
Cup of Coffee, 1961
oil on canvas
overall: 51.1 x 40.6 cm (20 1/8 x 16 in.)
Private collection

Cat. No. 16 / File Name: 3287-160.jpg
Roy Lichtenstein
Hot Dog with Mustard, 1963
oil and Magna on canvas
overall: 45.7 x 121.9 cm (18 x 48 in.)
Aaron I. Fleischman
© Estate of Roy Lichtenstein



Cat. No. 18
Roy Lichtenstein
Portable Radio, 1962
oil on canvas, aluminum and leather
overall: 43.8 x 50.8 cm (17 1/4 x 20 in.)
The Doris and Donald Fisher Collection, San Francisco

Cat. No. 19
Roy Lichtenstein
The Ring, 1962
oil on canvas
overall: 45.7 x 45.7 cm (18 x 18 in.)
Collection Anstiss and Ronald Krueck

Cat. No. 20
Roy Lichtenstein
Golf Ball, 1962
oil on canvas
overall: 81.3 x 81.3 cm (32 x 32 in.)
Private collection

Cat. No. 21 / File Name: 3287-038.jpg
Roy Lichtenstein
Tire, 1962
oil on canvas
overall: 172.7 x 142.24 cm (68 x 56 in.)
The Doris and Donald Fisher Collection, San Francisco, and the Museum of Modern Art, New York
© Estate of Roy Lichtenstein



Cat. No. 22
Roy Lichtenstein
Desk Calendar, 1962
oil on canvas
overall: 123.2 x 173.4 cm (48 1/2 x 68 1/4 in.)
The Museum of Contemporary Art, Los Angeles, The Panza Collection

Cat. No. 23
Roy Lichtenstein
Large Jewels, 1963
oil and Magna on canvas
overall: 172.7 x 91.4 cm (68 x 36 in.)
Musuem Ludwig, Cologne, Ludwig Gift

Cat. No. 24 / File Name: 3287-041.jpg
Roy Lichtenstein
Ball of Twine, 1963
oil and Magna on canvas
overall: 101.6 x 91.4 cm (40 x 36 in.)
Courtesy of Christie's
© Estate of Roy Lichtenstein



Cat. No. 25
Roy Lichtenstein
Magnifying Glass, 1963

oil on canvas
overall: 40.6 x 40.6 cm (16 x 16 in.)
Private collection

Cat. No. 26 / File Name: 3287-189.jpg

Roy Lichtenstein
Compositions I, 1964

Magna on canvas
overall: 172.7 x 147.3 cm (68 x 58 in.)
MMK Museum für Moderne Kunst, Frankfurt am Main, Former Karl Ströher Collection, Darmstadt
© Estate of Roy Lichtenstein



Cat. No. 27
Roy Lichtenstein
Ceramic Sculpture 7, 1965

glazed ceramic
overall: 24.1 x 22.9 x 17.8 cm (9 1/2 x 7 x 9 7/8 in.)
Courtesy Mitchell-Innes & Nash

Cat. No. 28
Roy Lichtenstein
Black and White Head, 1966

glazed ceramic
height: 15 in. (38.1 cm)
Saint Louis Art Museum, Eliza McMillan Trust and partial gift of Gerhard J. Petzall

Cat. No. 29 / File Name: 3287-024.jpg
Roy Lichtenstein

Masterpiece, 1962

oil on canvas
overall: 137.2 x 137.2 cm (54 x 54 in.)
Agnes Gund Collection, New York
© Estate of Roy Lichtenstein



Cat. No. 30
Roy Lichtenstein
Takka Takka, 1962

oil and Magna on canvas
overall: 142.2 x 172.7 cm (56 x 68 in.)
Musuem Ludwig, Cologne, Ludwig Gift

Cat. No. 32 / File Name: 3287-028.jpg
Roy Lichtenstein

Drowning Girl, 1963

oil and Magna on canvas
overall: 171.6 x 169.5 cm (67 9/16 x 66 3/4 in.)
The Museum of Modern Art, New York, Philip Johnson Fund (by exchange) and gift of Mr. and Mrs. Bagley Wright, 1971
© Estate of Roy Lichtenstein



Cat. No. 34
Roy Lichtenstein
Torpedo...LOS!, 1963

oil and Magna on canvas
overall: 172.7 x 203.2 cm (68 x 80 in.)
Collection Simonyi

Cat. No. 35
Roy Lichtenstein
***Bratatat*, 1962**

oil on canvas
overall: 116.8 x 86.4 cm (46 x 34 in.)
Collection Simonyi

Cat. No. 36 / File Name: 3287-045.jpg

Roy Lichtenstein
***Whaam!*, 1963**

oil and Magna on canvas
overall: 172.7 x 421.6 cm (68 x 166 in.), two panels
Tate, London, Purchased 1966
© Estate of Roy Lichtenstein



Cat. No. 37 / File Name: 3287-129.jpg

Roy Lichtenstein
***Ohhh...Alright...*, 1964**

oil and Magna on canvas
overall: 91.4 x 96.5 cm (36 x 38 in.)
Private collection
© Estate of Roy Lichtenstein



Cat. No. 38 / File Name: 3287-032.jpg

Roy Lichtenstein
***Oh, Jeff...I Love You, Too...But...*, 1964**

oil and Magna on canvas
overall: 121.9 x 121.9 cm (48 x 48 in.)
Collection Simonyi
© Estate of Roy Lichtenstein



Cat. No. 39
Roy Lichtenstein
***We Rose Up Slowly*, 1964**

oil and Magna on canvas
2 panels: 174.5 x 62.3 cm (68 11/16 x 24 1/2 in.); 174.5 x 234.5 cm (69 x 92 in.)
MMK Museum für Moderne Kunst, Frankfurt am Main, Former Karl Ströher Collection, Darmstadt

Cat. No. 40 / File Name: 3287-149.jpg
Roy Lichtenstein
***As I Opened Fire (Panel 1 of 3)*, 1964**

oil and Magna on canvas
panel: 172.7 x 142.2 cm (68 x 56 in.)
Stedelijk Museum, Amsterdam
© Estate of Roy Lichtenstein



Cat. No. 40 / File Name: 3287-150.jpg
Roy Lichtenstein
***As I Opened Fire (Panel 2 of 3)*, 1964**

oil and Magna on canvas
panel: 172.7 x 142.2 cm (68 x 56 in.)
Stedelijk Museum, Amsterdam
© Estate of Roy Lichtenstein



Cat. No. 40 / File Name: 3287-151.jpg
Roy Lichtenstein
As I Opened Fire (Panel 3 of 3), 1964
oil and Magna on canvas
panel: 172.7 x 142.2 cm (68 x 56 in.)
Stedelijk Museum, Amsterdam
© Estate of Roy Lichtenstein



Cat. No. 41
Roy Lichtenstein
M-Maybe, 1965
oil and Magna on canvas
overall: 152.4 x 152.4 cm (60 x 60 in.)
Musuem Ludwig, Cologne, Ludwig Gift

Cat. No. 42
Roy Lichtenstein
Head with Blue Shadow, 1965
glazed ceramic
overall: 38.1 x 21 x 20.3 cm (15 x 8 1/4 x 8 in.)
Raymond and Patsy Nasher Collection, Nasher Sculpture Center, Dallas

Cat. No. 43
Roy Lichtenstein
Explosion, 1965
oil and Magna on canvas
overall: 142.2 x 121.9 cm (56 x 48 in.)
Private Collection

Cat. No. 44
Roy Lichtenstein
Explosion II, 1965
porcelain enamel on steel
overall: 223.5 x 152.4 cm (88 x 60 in.)
Collection of the Blavatnik Family

Cat. No. 45 / File Name: 3287-050.jpg
Roy Lichtenstein
Wall Explosion II, 1965
porcelain enamel on steel
overall: 170.2 x 188 x 10.2 cm (67 x 74 x 4 in.)
Tate, London, Purchased 1980
© Estate of Roy Lichtenstein



Cat. No. 46
Roy Lichtenstein
Varoom!, 1963
oil and Magna on canvas
overall: 142.2 x 142.2 cm (56 x 56 in.)
Ryobi Foundation

Cat. No. 47 / File Name: 3287-065.jpg
Roy Lichtenstein
Brushstrokes, 1965
oil and Magna on canvas
overall: 122.5 x 122.5 cm (48 1/4 x 48 1/4 in.)
Private collection
© Estate of Roy Lichtenstein



Cat. No. 48 / File Name: 3287-064.jpg

Roy Lichtenstein

Little Big Painting, 1965

oil and Magna on canvas

overall: 172.7 x 203.2 cm (68 x 80 in.)

Whitney Museum of American Art, New York, Purchase, with funds from the Friends of the Whitney Museum of American Art

© Estate of Roy Lichtenstein



Cat. No. 49 / File Name: 3287-066.jpg

Roy Lichtenstein

Brushstroke with Spatter, 1966

oil and Magna on canvas

overall: 121.9 x 152.4 cm (48 x 60 in.)

The Art Institute of Chicago, Barbara Neff Smith and Solomon Byron Smith Purchase Fund

© Estate of Roy Lichtenstein



Cat. No. 50 / File Name: 3287-138.jpg

Roy Lichtenstein

Sunrise, 1965

oil and Magna on canvas

overall: 91.4 x 172.7 cm (36 x 68 in.)

Private collection

© Estate of Roy Lichtenstein



Cat. No. 51

Roy Lichtenstein

Seascape, 1964

oil on canvas

overall: 76.2 x 91.4 cm (30 x 36 in.)

Private collection

Cat. No. 52

Roy Lichtenstein

White Cloud, 1964

oil and Magna on canvas

overall: 172.7 x 203.2 cm (68 x 80 in.)

Irving Blum

Cat. No. 53

Roy Lichtenstein

Perforated Seascape #1 (Blue), 1965

porcelain enamel on steel

overall: 72.4 x 107.7 cm (28 1/2 x 42 in.)

Aaron I. Fleischman

Cat. No. 54

Roy Lichtenstein

Sunset, 1964

oil and Magna on canvas

overall: 50.8 x 61 cm (20 x 24 in.)

Private collection, Courtesy Mitchell- Innes & Nash

Cat. No. 55

Roy Lichtenstein

Sea Shore, 1964

oil and Magna on Plexiglas

overall: 61 x 76.2 cm (24 x 30 in.)

Private collection

Cat. No. 56

Roy Lichtenstein
Seascape, c. 1965

oil and Magna on canvas
overall: 172.7 x 203.2 cm (68 x 80 in.)
Private collection

Cat. No. 57

Roy Lichtenstein
Seascape, 1965

Rowlux and cut-and-pasted painted paper on board
overall: 75.1 x 55.6 cm (29 9/16 x 21 7/8 in.)
Private collection

Cat. No. 58

Roy Lichtenstein
Pink Seascape, 1965

Rowlux and cut-and-pasted painted paper on board
overall: 71.1 x 54.6 cm (28 x 21 1/2 in.)
Private collection, Courtesy Matthew Marks Gallery, New York

Cat. No. 59

Roy Lichtenstein
Seascape, 1965

oil and Magna on canvas
overall: 121.9 x 172.7 cm (48 x 68 in.)
Collection Viktor and Marianne Langen

Cat. No. 61 / File Name: 3287-157.jpg

Roy Lichtenstein
Washington Crossing the Delaware I, c. 1951

oil on canvas
overall: 66 x 81.3 cm (26 x 32 in.)
The Roy Lichtenstein Foundation Collection
© Estate of Roy Lichtenstein



Cat. No. 62

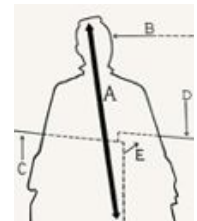
Roy Lichtenstein
George Washington, 1962

oil on canvas
129.5 x 96.5 cm (51 x 38 in.)
Private collection

Cat. No. 63 / File Name: 3287-067.jpg

Roy Lichtenstein
Portrait of Madame Cézanne, 1962

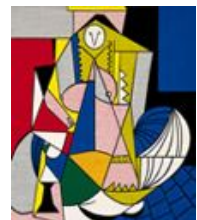
Magna on canvas
overall: 172.7 x 142.2 cm (68 x 56 in.)
Jason Blum
© Estate of Roy Lichtenstein



Cat. No. 64 / File Name: 3287-068.jpg

Roy Lichtenstein
Femme d'Alger, 1963

oil on canvas
overall: 203.2 x 172.7 cm (80 x 68 in.)
The Eli and Edythe L. Broad Collection, Los Angeles
© Estate of Roy Lichtenstein



Cat. No. 65 / File Name: 3287-140.jpg

Roy Lichtenstein

Non-objective I, 1964

oil and Magna on canvas

overall: 142.9 x 121.9 cm (56 1/4 x 48 in.)

The Eli and Edythe L. Broad Collection, Los Angeles

© Estate of Roy Lichtenstein



Cat. No. 66

Roy Lichtenstein

Still Life with Goldfish, 1972

oil and Magna on canvas

overall: 132.1 x 106.7 cm (52 x 42 in.)

Private collection

Cat. No. 67 / File Name: 3287-070.jpg

Roy Lichtenstein

Haystack, 1969

oil on canvas

overall: 45.7 x 61 cm (18 x 24 in.)

The Ruben Family

© Estate of Roy Lichtenstein



Cat. No. 68 / File Name: 3287-071.jpg

Roy Lichtenstein

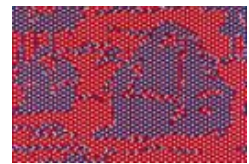
Haystacks, 1969

oil and Magna on canvas

overall: 40.6 x 61 cm (16 x 24 in.)

The Ruben Family

© Estate of Roy Lichtenstein



Cat. No. 69 / File Name: 3287-154.jpg

Roy Lichtenstein

Rouen Cathedral, Set 5 (panel 1 of 3), 1969

oil and Magna on canvas

panel: 160 x 106.7 cm (63 x 42 in.)

San Francisco Museum of Modern Art

Gift of Harry W. and Mary Margaret Anderson

© Estate of Roy Lichtenstein



Cat. No. 69 / File Name: 3287-155.jpg

Roy Lichtenstein

Rouen Cathedral, Set 5 (panel 2 of 3), 1969

oil and Magna on canvas

panel: 160 x 106.7 cm (63 x 42 in.)

San Francisco Museum of Modern Art

Gift of Harry W. and Mary Margaret Anderson

© Estate of Roy Lichtenstein



Cat. No. 69 / File Name: 3287-156.jpg

Roy Lichtenstein

Rouen Cathedral, Set 5 (panel 3 of 3), 1969

oil and Magna on canvas

panel: 160 x 106.7 cm (63 x 42 in.)

San Francisco Museum of Modern Art

Gift of Harry W. and Mary Margaret Anderson

© Estate of Roy Lichtenstein



:

Cat. No. 70

Roy Lichtenstein

Grapes, 1972

oil and Magna on canvas

overall: 55.9 x 71.1 cm (20 x 28 in.)

Aaron I. Fleischman

Cat. No. 71

Roy Lichtenstein

Still Life with Glass and Peeled Lemon, 1972

oil and Magna on canvas

overall: 106.7 x 121.9 cm (42 x 48 in.)

The Helman Collection

Cat. No. 72

Roy Lichtenstein

Unfurled (after Morris Louis), 1973

Magna on canvas

overall: 76.2 x 91.4 cm (30 x 36 in.)

Private collection

Cat. No. 73

Roy Lichtenstein

The Atom, 1975

oil and Magna on canvas

overall: 106.7 x 91.4 cm (42 x 36 in.)

Private collection

Cat. No. 74

Roy Lichtenstein

Purist Painting with Pitcher, Glass and Classical Column, 1975

oil and Magna on canvas

overall: 152.4 x 101.6 cm (60 x 40 in.)

Private collection

Cat. No. 75 / File Name: 3287-001.jpg

Roy Lichtenstein

Cubist Still Life, 1974

oil and Magna on canvas

overall: 228.6 x 173.2 cm (90 x 68 3/16 in.)

National Gallery of Art, Washington, Gift of Lila Acheson Wallace

© Estate of Roy Lichtenstein



Cat. No. 76

Roy Lichtenstein

Little Landscape, 1979

oil and Magna on linen

overall: 91.4 x 121.9 cm (36 x 48 in.)

Private collection

Cat. No. 77

Roy Lichtenstein

Frolic, 1977

oil and Magna on canvas

overall: 203.2 x 167.6 cm (80 x 66 in.)

Courtesy of Gagosian Gallery

Cat. No. 78
Roy Lichtenstein
Landscape with Figures and Rainbow, 1980
oil and Magna on canvas
overall: 213.4 x 304.8 cm (84 x 120 in.)
Musuem Ludwig, Cologne, Ludwig Gift

Cat. No. 79 / File Name: 3287-211.jpg
Roy Lichtenstein
Amerind Figure, 1981
patinated bronze
overall: 166.4 x 52.1 x 34.3 cm (65 1/2 x 20 1/2 x 13 1/2 in.)
Private collection
© Estate of Roy Lichtenstein



Cat. No. 80 / File Name: 3287-212.jpg
Roy Lichtenstein
Archaic Head VI, 1988
patinated bronze
overall: 148.6 x 47.6 x 25.4 cm (58 1/2 x 18 3/4 x 10 in.)
Private collection
© Estate of Roy Lichtenstein



Cat. No. 81
Roy Lichtenstein
Woman III, 1982
oil and Magna on canvas
overall: 203.2 x 142.2 cm (80 x 56 in.)
Stefan T. Edlis Collection

Cat. No. 82
Roy Lichtenstein
Sleeping Muse, 1983
patinated bronze
overall: 64.8 x 87 x 10.2 cm (25 1/2 x 34 1/4 x 4 in.)
Private collection

Cat. No. 83
Roy Lichtenstein
Plus and Minus VI, 1988
oil and Magna on canvas
overall: 127 x 96.5 cm (50 x 38 in.)
Private collection

Cat. No. 84 / File Name: 3287-081.jpg
Roy Lichtenstein
Laocoön, 1988
oil and Magna on canvas
overall: 304.8 x 259.1 cm (120 x 102 in.)
Private collection
© Estate of Roy Lichtenstein



Cat. No. 85
Roy Lichtenstein
Reflections on "Interior with Girl Drawing", 1990
oil and Magna on canvas
overall: 191.4 x 274.3 cm (75 1/4 x 108 in.)
The Eli and Edythe L. Broad Collection, Los Angeles

Cat. No. 86
Roy Lichtenstein
Modern Painting I, 1966
oil and Magna on canvas
unframed: 203.2 x 172.7 cm (80 x 68 in.)
framed: 205.11 x 174.63 cm (80 3/4 x 68 3/4 in.)
Frederick R. Weisman Art Foundation, Los Angeles

Cat. No. 87
Roy Lichtenstein
Modern Sculpture, 1967
brass and mirror
overall: 182.9 x 78.7 x 52.1 cm (72 x 31 x 20 1/2 in.)
San Francisco Museum of Modern Art, Bequest of Marciao Simon Weisman

Cat. No. 88
Roy Lichtenstein
Modern Painting Triptych, 1967
oil and Magna on canvas
overall: 91.4 x 274.3 cm (36 x 108 in.)
Collection Neil G. Bluhm

Cat. No. 89
Roy Lichtenstein
Modern Painting with Division, 1967
oil and Magna on canvas
overall: 106.7 x 213.4 cm (42 x 84 in.)
Private collection

Cat. No. 90
Roy Lichtenstein
Modern Sculpture with Glass Wave, 1967
brass and glass
overall: 231.8 x 73.8 x 70.1 cm (91 1/4 x 29 1/16 x 27 5/8 in.)
The Museum of Modern Art, New York, Gift of Mr. and Mrs. Richard L. Selle, 1976

Cat. No. 91
Roy Lichtenstein
Modern Painting with Bolt, 1967
oil and Magna on canvas
overall: 173.2 x 173.5 cm (68 3/16 x 68 5/16 in.)
The Museum of Modern Art, New York, The Sidney and Harriet Janis Collection, 1967

Cat. No. 92
Roy Lichtenstein
Modern Sculpture (Maquette), c. 1968
brass
overall: 72.4 x 135.9 x 24.1 cm (28 1/2 x 53 1/2 x 9 1/2 in.)
Detroit Institute of Arts, Gift of the artist

Cat. No. 93 / File Name: 3287-201.jpg
Roy Lichtenstein
Modern Sculpture with Velvet Rope, 1968
brass and velvet rope
2 parts: 211.5 x 66 x 38.1 cm (83 1/4 x 26 x 15 in.) and 149.9 x 63.5 x 38.1 cm (59 x 25 x 15 in.)
Private collection
© Estate of Roy Lichtenstein



Cat. No. 94

Roy Lichtenstein

***Mirror # 1 (oval 60" x 48")*, 1969**

oil and Magna on canvas

overall: 152.4 x 123.2 (60 x 48 1/2 in.)

The Eli and Edythe L. Broad Collection, Los Angeles

Cat. No. 95

Roy Lichtenstein

***Mirror #1 (oval 48" x 32")*, 1970**

oil and Magna on canvas

overall: 121.9 x 81.3 cm (48 x 32 in.)

Private collection

Cat. No. 96 / File Name: 3287-209.jpg

Roy Lichtenstein

***Mirror #1 (48" Diameter)*, 1970**

oil and Magna on canvas

diameter: 122.6 cm (48 1/4 in.)

Nancy and Robert Magoon

© Estate of Roy Lichtenstein



Cat. No. 97

Roy Lichtenstein

***Mirror #2 (Six Panels)*, 1970**

oil and Magna on canvas

overall: 243.8 x 274.3 cm (96 x 108 in.)

San Francisco Museum of Modern Art, Gift of Harry W. and Mary Margaret Anderson

Cat. No. 98 / File Name: 3287-098.jpg

Roy Lichtenstein

***Mirror #3 (Six Panels)*, 1971**

oil and Magna on canvas

overall: 304.8 x 335.3 cm (120 x 132 in.)

The Art Institute of Chicago, Anstiss and Ronald Kruek Fund for Contemporary Art, facilitated by the Roy Lichtenstein Foundation

© Estate of Roy Lichtenstein



Cat. No. 99

Roy Lichtenstein

Mirror #5 (36\"/>

Magna on canvas

diameter: 91.4 cm (36 in.)

Private collection

Cat. No. 100

Roy Lichtenstein

Mirror # 6 (36\"/>

oil and Magna on canvas

diameter: 91.4 cm (36 in.)

Private collection

Cat. No. 101 / File Name: 3287-100.jpg

Roy Lichtenstein

***Self-Portrait*, 1978**

oil and Magna on canvas

overall: 177.8 x 137.2 cm (70 x 54 in.)

Kravis Collection

© Estate of Roy Lichtenstein



Cat. No. 102
Roy Lichtenstein
Entablature #8, 1972
oil and Magna on canvas
overall: 76.2 x 609.6 cm (30 x 240 in.)
Private collection

Cat. No. 103
Roy Lichtenstein
Entablature, 1975
oil, Magna, sand, Magna medium, aluminum powder on canvas
overall: 137.2 x 548.6 cm (54 x 216 in.)
Private collection

Cat. No. 104 / File Name: 3287-104.jpg
Roy Lichtenstein
Artist's Studio "Look Mickey", 1973
oil, Magna, and sand with aluminum powder and Magna medium on canvas
overall: 243.8 x 325.1 cm (96 x 128 in.)
Collection Walker Art Center, Minneapolis; Gift of Judy and Kenneth Dayton and the T.B. Walker Foundation, 1981
© Estate of Roy Lichtenstein



Cat. No. 105
Roy Lichtenstein
Artist's Studio with Model, 1974
oil and Magna on canvas
overall: 243.8 x 325.1 cm (96 x 128 in.)
Collection of Irma and Norman Braman, Miami

Cat. No. 106
Roy Lichtenstein
Artist's Studio "The Dance", 1974
oil and Magna on canvas
overall: 244.3 x 325.5 cm (96 3/16 x 128 1/8 in.)
The Museum of Modern Art, New York, Gift of Mr. and Mrs. S.I. Newhouse, Jr., 1990

Cat. No. 107
Roy Lichtenstein
Artist's Studio "Foot Medication", 1974
oil and Magna on canvas
overall: 243.8 x 325.1 cm (96 x 128 in.)
Stefan T. Edlis Collection

Cat. No. 108
Roy Lichtenstein
Perfect Painting, 1978
oil and Magna on canvas
overall: 101.6 x 127 cm (40 x 50 in.)
Private collection

Cat. No. 109
Roy Lichtenstein
Perfect Painting, 1986
oil and Magna on canvas
overall: 178.8 x 254.3 cm (70 3/8 x 100 1/8 in.)
The Broad Art Foundation, Santa Monica

Cat. No. 110

Roy Lichtenstein

Imperfect Sculpture, 1995

stained cast iron and painted stainless steel plates
overall: 78.11 x 88.27 x 12.7 cm (30 3/4 x 34 3/4 x 5 in.)
Private collection

Cat. No. 111

Roy Lichtenstein

Imperfect Painting, 1986

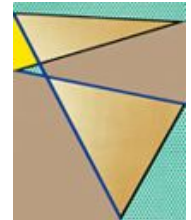
oil and Magna on canvas
overall: 228.6 x 157.5 cm (90 x 62 in.)
Collection of Kenneth and Judy Dayton

Cat. No. 112 / File Name: 3287-152.jpg

Roy Lichtenstein

Imperfect Painting (Gold) (left panel), 1987

oil and Magna on canvas
overall: 161.6 x 275 cm (63 5/8 x 108 1/4 in.) (irregular)
Private collection
© Estate of Roy Lichtenstein

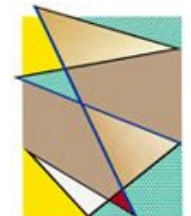


Cat. No. 112 / File Name: 3287-153.jpg

Roy Lichtenstein

Imperfect Painting (Gold) (right panel), 1987

oil and Magna on canvas
overall: 161.6 x 275 cm (63 5/8 x 108 1/4 in.) (irregular)
Private collection
© Estate of Roy Lichtenstein



Cat. No. 114

Roy Lichtenstein

Galatea, 1990

painted and patinated bronze
overall: 226.1 x 81.3 x 48.3 cm (89 x 32 x 19 in.)
Private collection

Cat. No. 115 / File Name: 3287-260.jpg

Roy Lichtenstein

Nude with Street Scene, 1995

oil and Magna on canvas
overall: 121.9 x 171.5 cm (48 x 67 1/2 in.)
Collection Simonyi
© Estate of Roy Lichtenstein



Cat. No. 116

Roy Lichtenstein

Two Nudes, 1995

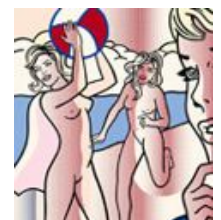
oil and Magna on canvas
overall: 205.7 x 302.3 x 6.4 cm (81 x 119 x 2 1/2 in.)
Collection Simonyi

Cat. No. 117 / File Name: 3287-284.jpg

Roy Lichtenstein

Nudes with Beach Ball, 1994

oil and Magna on canvas
overall: 301 x 272.4 cm (118 1/2 x 107 1/4 in.)
Private collection
© Estate of Roy Lichtenstein



Cat. No. 118
Roy Lichtenstein
Woman: Sunlight, Moonlight, 1996
painted and patinated bronze
overall: 104.1 x 64.1 x 34.9 cm (41 x 25 1/4 x 13 3/4 in.)
Private collection

Cat. No. 119 / File Name: 3287-114.jpg
Roy Lichtenstein
Nude with Bust, 1995
oil and Magna on canvas
overall: 274.3 x 228.6 cm (108 x 90 x 2 1/2 in.)
Private collection
© Estate of Roy Lichtenstein



Cat. No. 120
Roy Lichtenstein
Interior with Nude Leaving, 1997
oil and Mineral Spirits Acrylic (MSA) on canvas
overall: 177.8 x 180.3 cm (70 x 71 in.)
Private collection

Cat. No. 121
Roy Lichtenstein
Yellow Cliffs, 1996
oil and magna on canvas
overall: 177.8 x 180.3 cm (108 3/4 x 48 3/4 in.)
Suzanne Deal Booth and David G. Booth

Cat. No. 122
Roy Lichtenstein
Treetops Through the Fog, 1996
oil and Magna on canvas
overall: 177.8 x 391.2 cm (70 x 154 in.)
Private collection

Cat. No. 123
Roy Lichtenstein
Scholar's Rock, 1996
cast and painted stainless steel
overall: 71.2 x 43.5 x 22.2 cm (28 1/16 x 17 1/8 x 8 3/4 in.)
Private collection

Cat. No. 124
Roy Lichtenstein
Landscape with Philosopher, 1996
oil and Magna on canvas
overall: 264.2 x 121.3 cm (104 x 47 3/4 in.)
Private collection

Cat. No. 125
Roy Lichtenstein
Landscape with Boat, 1996
oil and Magna on canvas
overall: 149.2 x 244.5 cm (58 3/4 x 96 1/4 in.)
Private collection

Cat. No. 126 / File Name: 3287-117.jpg
Roy Lichtenstein
Landscape in Fog, 1996
oil and Magna on canvas
overall: 180.3 x 207.6 cm (71 x 81 3/4 in.)
Private collection
© Estate of Roy Lichtenstein



Cat. No. 131
Roy Lichtenstein
Untitled, c. 1959
gouache and watercolor on paper
overall: 48.6 x 63.2 cm (19 1/8 x 24 7/8 in.)
Private collection

Cat. No. 133
Roy Lichtenstein
Crying Girl (Study), 1964
graphite pencil and colored pencil on paper
overall: 14 x 14.6 cm (5 1/2 x 5 3/4 in.)
The Collection of Barbara Bluhm-Kaul & Don Kaul, Chicago

Cat. No. 134
Roy Lichtenstein
Ohhh...Alright...(Study), 1964
graphite pencil and colored pencil on paper
overall: 14.9 x 14.9 cm (5 7/8 x 5 7/8 in.)
Private collection

Cat. No. 139 / File Name: 3287-210.jpg
Roy Lichtenstein
Alka Seltzer, 1966
graphite pencil, pochoir, and lithographic rubbing crayon on paper
overall: 76.2 x 55.9 cm (30 x 22 in.)
The Art Institute of Chicago, Margaret Fisher Endowment
© Estate of Roy Lichtenstein



Cat. No. 143
Roy Lichtenstein
Mirror #3 (Six Panels) (Study), 1970
graphite pencil and colored pencil on paper
overall: 39 x 40 cm (15 3/8 x 15 3/4 in.)
The Art Institute of Chicago, Margaret Fisher Endowment

Cat. No. 144
Roy Lichtenstein
Portrait Triptych (Study), 1974
graphite pencil and colored pencil on cut-and-pasted paper on paper
Private collection

Cat. No. 147
Roy Lichtenstein
Abstraction (Studies), 1975
graphite and colored pencil on paper
overall: 29.5 x 22.9 cm (11 5/8 x 9 in.)
Private collection

:

Cat. No. 160

Roy Lichtenstein

Imperfect Paintings (Studies), 1987

graphite pencil and colored pencil on graph paper

overall: 27.8 x 21.6 cm (10 15/16 x 8 1/2 in.)

Private collection

Cat. No. 170

Roy Lichtenstein

Interior with Painting of Reclining Nude (Study), 1997

Magna and cut-and-pasted printed and painted paper on board

overall: 101.9 x 153 cm (40 1/8 x 60 1/4 in.)

The Roy Lichtenstein Foundation Collection

Cat. No. 171 / File Name: 3287-221.jpg

Roy Lichtenstein

Still Life with Reclining Nude (Study), 1997

cut-and-pasted printed and painted paper on board

overall: 101.9 x 153 cm (40 1/8 x 60 1/4 in.)

The Roy Lichtenstein Foundation Collection

© Estate of Roy Lichtenstein

