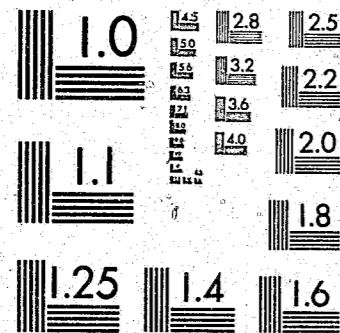


National Criminal Justice Reference Service

**ncjrs**

This microfiche was produced from documents received for inclusion in the NCJRS data base. Since NCJRS cannot exercise control over the physical condition of the documents submitted, the individual frame quality will vary. The resolution chart on this frame may be used to evaluate the document quality.



MICROCOPY RESOLUTION TEST CHART  
NATIONAL BUREAU OF STANDARDS-1963-A

Microfilming procedures used to create this fiche comply with the standards set forth in 41CFR 101-11.504.

Points of view or opinions stated in this document are those of the author(s) and do not represent the official position or policies of the U. S. Department of Justice.

National Institute of Justice  
United States Department of Justice  
Washington, D. C. 20531

2/10/86

**ICPSR**  
Inter-university Consortium for  
Political and Social Research

**Census of State Adult  
Correctional Facilities,  
1979**

96075

**U.S. Dept. of Justice  
Bureau of Justice Statistics**

ICPSR 7852

U.S. Department of Justice  
National Institute of Justice

This document has been reproduced exactly as received from the person or organization originating it. Points of view or opinions stated in this document are those of the authors and do not necessarily represent the official position or policies of the National Institute of Justice.

Permission to reproduce this copyrighted material has been granted by

Public Domain/NIJ  
U.S. Dept. of Justice

to the National Criminal Justice Reference Service (NCJRS).

Further reproduction outside of the NCJRS system requires permission of the copyright owner.

CENSUS OF STATE ADULT CORRECTIONAL FACILITIES, 1979

(ICPSR STUDY 7852)

Principal Investigator

Bureau of Justice Statistics

Inter-university Consortium for Political  
and Social Research

P.O. BOX 1248

Ann Arbor, Michigan 48106

ICPSR Edition  
First Printing, 1981

96075

ACKNOWLEDGEMENT OF ASSISTANCE

All manuscripts utilizing data made available through the Consortium should acknowledge that fact as well as identify the original collector of the data. The ICPSR Council urges all users of the ICPSR data facilities to follow some adaptation of this statement with the parentheses indicating items to be filled in appropriately or deleted by the individual user.

The data (and tabulations) utilized in this (publication) were made available (in part) by the Inter-university Consortium for Political and Social Research. The data for the CENSUS OF STATE ADULT CORRECTIONAL FACILITIES, 1979 were originally collected by the bureau of the Census. Neither the collector of the original data nor the Consortium bear any responsibility for the analyses or interpretations presented here.

In order to provide funding agencies with essential information about the use of archival resources and to facilitate the exchange of information about ICPSR participants' research activities, each user of the ICPSR data facilities is expected to send two copies of each completed manuscript or thesis abstract to the Consortium. Please indicate in the cover letter which data were used.

## STUDY DESCRIPTION

The Census of State Adult Correctional Facilities, 1979 was one of a series of data-gathering efforts undertaken during the 1970's to assist policymakers in assessing and overcoming any deficiencies in the nation's correctional institutions. During that decade, an unprecedented growth in the number of people subject to custody imposed increasingly heavier demands on already strained institutions. Intensified by overcrowding, the deterioration in living conditions among the incarcerated helped spur public authorities, especially the judiciary, to take remedial action. Decisions rendered by state and federal courts have required the adoption of measures to alleviate overcrowding and otherwise improve living conditions in correctional facilities. Against this background, the Bureau of Justice Statistics has conducted surveys of federal, state, and local correctional facilities to determine existing conditions and to predict future needs.

The Census of State Adult Correctional Facilities, 1979 was conducted in conjunction with the Survey of Inmates of State Adult Correctional Facilities, 1979. The Census of Correctional Facilities, 1979 was designed to gather a wide range of information on all Federal Correctional Facilities operating in 1979. The type of information collected includes:

INMATE DEMOGRAPHICS - sentenced and unsentenced, by security classification, by sex of inmate, by race, and by veteran status

STAFF DEMOGRAPHICS - by full and part time staff, by paid and unpaid staff, by type of position, and by race

CONFINEMENT UNIT INFORMATION - rated capacity, floor space, number of units, security designation, and number of inmates in each type of unit

PROGRAMS FOR INMATES - by group offering programs, and by type of program

MEDICAL EXAMINATION - by tests given

The survey was conducted by mail, with follow-up telephone queries for facilities failing to complete the questionnaires. The response rate was 100%. There are 493 variables for each of the 791 facilities interviewed for the survey.

11

FILE STRUCTURE

The Census of State Adult Correctional Facilities, 1979 data are available from the ICPSR in two formats: a card image file and an OSIRIS dataset. The card image file contains one set of cards per case known as a deck. The deck format is based on 80 column punched cards. The data are sorted by case with all decks for a case together in ascending order.

The OSIRIS dictionary gives the format and other information for each variable in the OSIRIS data file. The dictionary or dictionary-codebook file is used in conjunction with the OSIRIS software package. The OSIRIS data file is constructed with a single logical record, for each case. There are 493 variables on 791 cases.

The OSIRIS data file can be accessed directly through software packages or programs which do not use the OSIRIS dictionary by specifying the tape locations of the desired variables. These tape locations are given in the OSIRIS dictionary-codebook.

ICPSR PROCESSING INFORMATION

The study was processed according to the standard ICPSR processing procedures. The data were checked for illegal or inconsistent code values which, when found, were recoded to OSIRIS missing data values. No consistency checks were performed. Statements bracketed in "<" and ">" signs in the body of the codebook were added by the processors for explanatory purposes. The archival processing of this study was done by David Schreiber.

111

CODEBOOK INFORMATION

The example below is a reproduction of information appearing in the machine-readable codebook for a typical variable. The numbers in brackets do not appear but are references to the descriptions which follow this example.

.....  
[1] VAR 0005 [2] FORM NUMBER [3] NO MISSING  
REF 0005 [4] LOC 10 WIDTH 2 [5] DK - COL -  
[6] -----

[7] Form number  
-----

[8] -----

[9] -----

[10] [11]

- 42. Short form
- 43. Long Form

.....  
[1] Indicates the variable and reference numbers. A variable and reference number are assigned to each item in the study. In this codebook which documents the archived dataset these numbers are identical. Should the data be disseminated in a different structure, new variable numbers may be assigned or created. The reference number would remain unchanged and correspond to those in this codebook.

## IV

- [2] Indicates the abbreviated (24 character maximum) variable label used within OSIRIS to identify each variable. An expanded version can be found in the Variable Description List.
- [3] Indicates the designation of missing data. In this example, there are no missing data codes. Alternative statements for other variables are "MD=0 OR GE 9", "MD GE 9", or MD=9. Some analysis software packages (including the ICPSR-supported package) require that certain types of data which the user desires to be excluded from analysis be designated as "missing data" e.g., inappropriate, unascertained, unascertainable, or ambiguous data categories. Although this value is defined as within the missing data category, this does not mean that users should not or cannot use this code value in a substantive role if they so desire.
- [4] Indicates the sequential location and width of this variable within the record when the data are stored on magnetic tape. In this example the variable named "Form number" is 2 columns wide and located in the 10th column within the record.
- [5] Indicates the location by deck and column(s) of this variable when the data are stored on cards or in card image format.
- [6] Indicates the full text of the variable description supplied by the original collector of the data. The numbers and letters that may appear at the beginning are question numbers from the survey forms.
- [7] Indicates an additional comment or explanation appended to the variable description.
- [8] A variable which has a footnote associated with it is denoted by the message, "SEE NOTE (S) X" where X is the number of the footnote referenced.
- [9] Indicates the code values occurring in the data for this variable.
- [10] Indicates the textual definitions of the codes.

## V

## VARIABLE DESCRIPTION LIST

## CENSUS OF STATE ADULT CORRECTIONAL FACILITIES, 1979

## ICPSR PROCESSING VARIABLES

1. ICPSR Study Number
2. ICPSR Version Number
3. ICPSR Part Number
4. Sequence Number

## STUDY AND GOVERNMENT ID VARIABLES

5. Form Number
6. State Number
7. County
8. Government ID
9. Agency ID
10. Type of Institution
11. Number of Employees
12. Sex of Inmates
13. Type of Facility
14. Facility Used For: Youth Confinement
15. Facility Used For: Classification
16. Facility Used For: Medical Treatment
17. Facility Used For: Adult Confinement
18. Facility Used For: Other
19. What is The Rated Capacity of This Facility?
20. Does Facility Have a Study Release Program?
21. Does Facility Have a Work Release Program?

## NUMBER OF INMATES

22. Total Number of Males
23. Total Number of Females
24. Number of Sentenced Males
25. Number of Sentenced Females
26. Number of Unsented Males
27. Number of Unsented Females
28. Total Number of Males: Not Allowed to Leave
29. Total Number of Females: Not Allowed to Leave
30. Number of Sentenced Males: Not Allowed to Leave
31. Number of Sentenced Females: Not Allowed to Leave
32. Number of Unsented Males: Not Allowed to Leave
33. Number of Unsented Females: Not Allowed Leave
34. Total Number of Males: Allowed to Leave
35. Total Number of Females: Allowed to Leave
36. Number of Sentenced Males: Allowed to Leave

## VI

## VARIABLE DESCRIPTION LIST

## CENSUS OF STATE ADULT CORRECTIONAL FACILITIES, 1979

37. Number of Sentenced Females: Allowed to Leave
38. Number of Unsented Males: Allowed to Leave
39. Number of Unsented Females: Allowed to Leave
40. Total Number of Males: On Study Release
41. Total Number of Females: On Study Release
42. Number of Sentenced Males: On Study Release
43. Number of Sentenced Females: On Study Release
44. Number of Unsented Males: On Study Release
45. Number of Unsented Females: On Study Release
46. Total Number of Males: On Work Release
47. Total Number of Females: On Work Release
48. Number of Sentenced Males: On Work Release
49. Number of Sentenced Females: On Work Release
50. Number of Unsented Males: On Work Release
51. Number of Unsented Females: On Work Release
52. Total Number of Males: Other Types of Release
53. Total Number of Females: Other Types of Release
54. Number of Sentenced Males: Other Types of Release
55. Number of Sentenced Females: Other Type Release
56. Number of Unsented Males: Other Type Release
57. Number of Unsented Females: Other Type Release

## NUMBER OF INMATES BY SECURITY CLASSIFICATION

58. Number in Maximum Security: Male
59. Number in Maximum Security: Female
60. Number in Close Security: Male
61. Number in Close Security: Female
62. Number in Medium Security: Male
63. Number in Medium Security: Female
64. Number in Minimum Security: Male
65. Number in Minimum security: Female
66. Number Not Classified/Not Yet Sentenced: Male
67. Number Not Classified/Not Yet Sentenced: Female
68. Number in Other Security: Male
69. Number in Other Security: Female

## VII

## VARIABLE DESCRIPTION LIST

## CENSUS OF STATE ADULT CORRECTIONAL FACILITIES, 1979

## NUMBER OF INMATES BY RACE

70. Total Inmate Population: Male
71. Total Inmate Population: Female
72. White, Not of Hispanic Origin Population: Male
73. White, Not of Hispanic Origin Population: Female
74. Black, Not of Hispanic Origin Population: Male
75. Black, Not of Hispanic Origin Population: Female
76. Hispanic Origin Population: Male
77. Hispanic Origin Population: Female
78. White, Hispanic Origin Population: Male
79. White, Hispanic Origin Population: Female
80. Black, Hispanic Origin Population: Male
81. Black, Hispanic Origin Population: Female
82. American Indian/Alaskan Native Population: Male
83. American Indian/Alaskan Native Population: Female
84. Asian/Pacific Islander Population: Male
85. Asian/Pacific Islander Population: Female

## NUMBER OF VETERANS

86. U.S. Veterans Population: Male
87. U.S. Veterans Population: Female
88. Vietnam Veterans Population: Male
89. Vietnam Veterans Population: Female
90. Is There a VA Rep. at or Visiting Facility?
91. <If Yes> What VA Organization?
92. <If Yes> What Other Organization?
93. <If Yes> Is Rep. Stationed at Facility?
94. <If Yes> How Frequently Does Rep. Visit?

## CONFINEMENT UNIT INFORMATION

95. Rated Capacity of One Confinement Unit - Type 1
96. Not Rated - Type 1
97. Floor Space of One Confinement Unit - Type 1
98. Number of Confinement Units - Type 1
99. Number of hours per Day Confined to Unit - Type 1
100. Confinement Unit Use - Type 1
101. Security Designation of Confinement Unit - Type 1
102. Number of Inmates Today - Type 1
103. Male/Female Unit Use - Type 1
104. Rated Capacity of One Confinement Unit - Type 2
105. Not Rated - Type 2
106. Floor Space of One Confinement Unit - Type 2
107. Number of Confinement Units - Type 2

## VIII

## VARIABLE DESCRIPTION LIST

## CENSUS OF STATE ADULT CORRECTIONAL FACILITIES, 1979

108. Number of hours per Day Confined to Unit - Type 2
109. Confinement Unit Use - Type 2
110. Security Designation of Confinement Unit - Type 2
111. Number of Inmates Today - Type 2
112. Male/Female Unit Use - Type 2
113. Rated Capacity of One Confinement Unit - Type 3
114. Not Rated - Type 3
115. Floor Space of One Confinement Unit - Type 3
116. Number of Confinement Units - Type 3
117. Number of hours per Day Confined to Unit - Type 3
118. Confinement Unit Use - Type 3
119. Security Designation of Confinement Unit - Type 3
120. Number of Inmates Today - Type 3
121. Male/Female Unit Use - Type 3
122. Rated Capacity of One Confinement Unit - Type 3
123. Not Rated - Type 4
124. Floor Space of One Confinement Unit - Type 4
125. Number of Confinement Units - Type 4
126. Number of hours per Day Confined to Unit - Type 4
127. Confinement Unit Use - Type 4
128. Security Designation of Confinement Unit - Type 4
129. Number of Inmates Today - Type 4
130. Male/Female Unit Use - Type 4
131. Rated Capacity of One Confinement Unit - Type 5
132. Not Rated - Type 5
133. Floor Space of One Confinement Unit - Type 5
134. Number of Confinement Units - Type 5
135. Number of hours per Day Confined to Unit - Type 5
136. Confinement Unit Use - Type 5
137. Security Designation of Confinement Unit - Type 5
138. Number of Inmates Today - Type 5
139. Male/Female Unit Use - Type 5
140. Rated Capacity of One Confinement Unit - Type 6
141. Not Rated - Type 6
142. Floor Space of One Confinement Unit - Type 6
143. Number of Confinement Units - Type 6
144. Number of hours per Day Confined to Unit - Type 6
145. Confinement Unit Use - Type 6
146. Security Designation of Confinement Unit - Type 6
147. Number of Inmates Today - Type 6
148. Male/Female Unit Use - Type 6
149. Rated Capacity of One Confinement Unit - Type 7
150. Not Rated - Type 7
151. Floor Space of One Confinement Unit - Type 7
152. Number of Confinement Units - Type 7
153. Number of hours per Day Confined to Unit - Type 7
154. Confinement Unit Use - Type 7
155. Security Designation of Confinement Unit - Type 7
156. Number of Inmates Today - Type 7

## IX

## VARIABLE DESCRIPTION LIST

## CENSUS OF STATE ADULT CORRECTIONAL FACILITIES, 1979

157. Male/Female Unit Use - Type 7
158. Rated Capacity of One Confinement Unit - Type 8
159. Not Rated - Type 8
160. Floor Space of One Confinement Unit - Type 8
161. Number of Confinement Units - Type 8
162. Number of hours per Day Confined to Unit - Type 8
163. Confinement Unit Use - Type 8
164. Security Designation of Confinement Unit - Type 8
165. Number of Inmates Today - Type 8
166. Male/Female Unit Use - Type 8
167. Rated Capacity of One Confinement Unit - Type 9
168. Not Rated - Type 9
169. Floor Space of One Confinement Unit - Type 9
170. Number of Confinement Units - Type 9
171. Number of hours per Day Confined to Unit - Type 9
172. Confinement Unit Use - Type 9
173. Security Designation of Confinement Unit - Type 9
174. Number of Inmates Today - Type 9
175. Male/Female Unit Use - Type 9
176. Rated Capacity of One Confinement Unit - Type 10
177. Not Rated - Type 10
178. Floor Space of One Confinement Unit - Type 10
179. Number of Confinement Units - Type 10
180. Number of hours per Day Confined to Unit - Type 10
181. Confinement Unit Use - Type 10
182. Security Designation of Confinement Unit - Type 10
183. Number of Inmates Today - Type 10
184. Male/Female Unit Use - Type 10
185. Rated Capacity of One Confinement Unit - Type 11
186. Not Rated - Type 11
187. Floor Space of One Confinement Unit - Type 11
188. Number of Confinement Units - Type 11
189. Number of hours per Day Confined to Unit - Type 11
190. Confinement Unit Use - Type 11
191. Security Designation of Confinement Unit - Type 11
192. Number of Inmates Today - Type 11
193. Male/Female Unit Use - Type 11
194. Rated Capacity of One Confinement Unit - Type 12
195. Not Rated - Type 12
196. Floor Space of One Confinement Unit - Type 12
197. Number of Confinement Units - Type 12
198. Number of hours per Day Confined to Unit - Type 12
199. Confinement Unit Use - Type 12
200. Security Designation of Confinement Unit - Type 12
202. Number of Inmates Today - Type 12
202. Male/Female Unit Use - Type 12
203. Rated Capacity of One Confinement Unit - Type 13
204. Not Rated - Type 13
205. Floor Space of One Confinement Unit - Type 13

X  
VARIABLE DESCRIPTION LIST

CENSUS OF STATE ADULT CORRECTIONAL FACILITIES, 1979

- 206. Number of Confinement Units - Type 13
- 207. Number of hours per Day Confined to Unit - Type 13
- 208. Confinement Unit Use - Type 13
- 209. Security Designation of Confinement Unit - Type 13
- 210. Number of Inmates Today - Type 13
- 211. Male/Female Unit Use - Type 13
- 212. Rated Capacity of One Confinement Unit - Type 14
- 213. Not Rated - Type 14
- 214. Floor Space of One Confinement Unit - Type 14
- 215. Number of Confinement Units - Type 14
- 216. Number of hours per Day Confined to Unit - Type 14
- 217. Confinement Unit Use - Type 14
- 218. Security Designation of Confinement Unit - Type 14
- 219. Number of Inmates Today - Type 14
- 220. Male/Female Unit Use - Type 14
- 221. Rated Capacity of One Confinement Unit - Type 15
- 222. Not Rated - Type 15
- 223. Floor Space of One Confinement Unit - Type 15
- 224. Number of Confinement Units - Type 15
- 225. Number of hours per Day Confined to Unit - Type 15
- 226. Confinement Unit Use - Type 15
- 227. Security Designation of Confinement Unit - Type 15
- 228. Number of Inmates Today - Type 15
- 229. Male/Female Unit Use - Type 15
- 230. Rated Capacity of One Confinement Unit - Type 16
- 231. Not Rated - Type 16
- 232. Floor Space of One Confinement Unit - Type 16
- 233. Number of Confinement Units - Type 16
- 234. Number of hours per Day Confined to Unit - Type 16
- 235. Confinement Unit Use - Type 16
- 236. Security Designation of Confinement Unit - Type 16
- 237. Number of Inmates Today - Type 16
- 238. Male/Female Unit Use - Type 16
- 239. Rated Capacity of One Confinement Unit - Type 17
- 240. Not Rated - Type 17
- 241. Floor Space of One Confinement Unit - Type 17
- 242. Number of Confinement Units - Type 17
- 243. Number of hours per Day Confined to Unit - Type 17
- 244. Confinement Unit Use - Type 17
- 245. Security Designation of Confinement Unit - Type 17
- 246. Number of Inmates Today - Type 17
- 247. Male/Female Unit Use - Type 17
- 248. Rated Capacity of One Confinement Unit - Type 18
- 249. Not Rated - Type 18
- 250. Floor Space of One Confinement Unit - Type 18
- 251. Number of Confinement Units - Type 18
- 252. Number of hours per Day Confined to Unit - Type 18
- 253. Confinement Unit Use - Type 18
- 254. Security Designation of Confinement Unit - Type 18

XI

VARIABLE DESCRIPTION LIST

CENSUS OF STATE ADULT CORRECTIONAL FACILITIES, 1979

- 255. Number of Inmates Today - Type 18
- 256. Male/Female Unit Use - Type 18
- 257. Rated Capacity of One Confinement Unit - Type 19
- 258. Not Rated - Type 19
- 259. Floor Space of One Confinement Unit - Type 19
- 260. Number of Confinement Units - Type 19
- 261. Number of hours per Day Confined to Unit - Type 19
- 262. Confinement Unit Use - Type 19
- 263. Security Designation of Confinement Unit - Type 19
- 264. Number of Inmates Today - Type 19
- 265. Male/Female Unit Use - Type 19
- 266. Rated Capacity of One Confinement Unit - Type 20
- 267. Not Rated - Type 20
- 268. Floor Space of One Confinement Unit - Type 20
- 269. Number of Confinement Units - Type 20
- 270. Number of hours per Day Confined to Unit - Type 20
- 271. Confinement Unit Use - Type 20
- 272. Security Designation of Confinement Unit - Type 20
- 273. Number of Inmates Today - Type 20
- 274. Male/Female Unit Use - Type 20
- 275. Total Number of Inmates
- 276. Male/Female Unit Use: Total

COUNSELING GIVEN

- 277. Counseling-Psychological/Psychiatric: Male
- 278. Counseling-Psychological/Psychiatric: Female
- 279. Counseling-Veterans: Male
- 280. Counseling-Veterans: Female
- 281. Counseling-Alcohol Addiction: Male
- 282. Counseling-Alcohol Addiction: Female
- 283. Counseling-Drug Dependence: Male
- 284. Counseling-Drug Dependence: Female
- 285. Counseling-Employment: Male
- 286. Counseling-Employment: Female
- 287. Counseling-Other 1: Male
- 288. Counseling-Other 1: Female
- 289. Counseling-Other 2: Male
- 290. Counseling-Other 2: Female
- 291. Counseling-Other 3: Male
- 292. Counseling-Other 3: Female



## VARIABLE DESCRIPTION LIST

## CENSUS OF STATE ADULT CORRECTIONAL FACILITIES, 1979

## EDUCATION OFFERED

293. Education-Basic: Male  
 294. Education-Basic: Female  
 295. Education-Secondary: Male  
 296. Education-Secondary: Female  
 297. Education-Special Ed: Male  
 298. Education-Special Ed: Female  
 299. Education-College in Facility: Male  
 300. Education-College in Facility: Female  
 301. Education-College outside Facility: Male  
 302. Education-College outside Facility: Female  
 303. Education-Social Adjustment: Male  
 304. Education-Social Adjustment: Female  
 305. Education-Vocational/Technical Training: Male  
 306. Education-Vocational/Technical Training: Female  
 307. Education-Other 1: Male  
 308. Education-Other 1: Female  
 309. Education-Other 2: Male  
 310. Education-Other 2: Female

## DEGREES OR DIPLOMAS GIVEN

311. Number of Diplomas/Degrees: High School  
 312. Number of Diplomas/Degrees: 2-Year College  
 313. Number of Diplomas/Degrees: 4-Year College  
 314. Number of Diplomas/Degrees: Graduate  
 315. Number of Diplomas/Degrees: Other 1  
 316. Number of Diplomas/Degrees: Other 2  
 317. Number of Diplomas/Degrees: Other 3  
 318. Number of Diplomas/Degrees: Other 4

## NUMBER OF STAFF

319. Number of Staff: Payroll Staff/Full-Time  
 320. Number of Staff: Payroll Staff/Part-Time  
 321. Number of Staff: Nonpayroll Staff/Full-Time  
 322. Number of Staff: Nonpayroll Staff/Part-Time  
 323. Administrative Staff: Payroll Staff/Full-Time  
 324. Administrative Staff: Payroll Staff/Part-Time  
 325. Administrative Staff: Nonpayroll Staff/Full-Time  
 326. Administrative Staff: Nonpayroll Staff/Part-Time  
 327. Clerical Staff: Payroll Staff/Full-Time  
 328. Clerical Staff: Payroll Staff/Part-Time  
 329. Clerical Staff: Nonpayroll Staff/Full-Time  
 330. Clerical Staff: Nonpayroll Staff/Part-Time

## VARIABLE DESCRIPTION LIST

## CENSUS OF STATE ADULT CORRECTIONAL FACILITIES, 1979

331. Supervision Staff: Payroll Staff/Full-Time  
 332. Supervision Staff: Payroll Staff/Part-Time  
 333. Supervision Staff: Nonpayroll Staff/Full-Time  
 334. Supervision Staff: Nonpayroll Staff/Part-Time  
 335. Psychologists: Payroll Staff/Full-Time  
 336. Psychologists: Payroll Staff/Part-Time  
 337. Psychologists: Nonpayroll Staff/Full-Time  
 338. Psychologists: Nonpayroll Staff/Part-Time  
 339. Psychiatrists: Payroll Staff/Full-Time  
 340. Psychiatrists: Payroll Staff/Part-Time  
 341. Psychiatrists: Nonpayroll Staff/Full-Time  
 342. Psychiatrists: Nonpayroll Staff/Part-Time  
 343. Dentists: Payroll Staff/Full-Time  
 344. Dentists: Payroll Staff/Part-Time  
 345. Dentists: Nonpayroll Staff/Full-Time  
 346. Dentists: Nonpayroll Staff/Part-Time  
 347. Other Doctors: Payroll Staff/Full-Time  
 348. Other Doctors: Payroll Staff/Part-Time  
 349. Other Doctors: Nonpayroll Staff/Full-Time  
 350. Other Doctors: Nonpayroll Staff/Part-Time  
 351. Other Med Personnel: Payroll Staff/Full-Time  
 352. Other Med Personnel: Payroll Staff/Part-Time  
 353. Other Med Personnel: Nonpayroll Staff/Full-Time  
 354. Other Med Personnel: Nonpayroll Staff/Part-Time  
 355. Treatment/Educ Staff: Payroll Staff/Full-Time  
 356. Treatment/Educ Staff: Payroll Staff/Part-Time  
 357. Treatment/Educ Staff: Nonpayroll Staff/Full-Time  
 358. Treatment/Educ Staff: Nonpayroll Staff/Part-Time  
 359. Maint/Culinary Staff: Payroll Staff/Full-Time  
 360. Maint/Culinary Staff: Payroll Staff/Part-Time  
 361. Maint/Culinary Staff: Nonpayroll Staff/Full-Time  
 362. Maint/Culinary Staff: Nonpayroll Staff/Part-Time  
 363. Other Staff: Payroll Staff/Full-time  
 364. Other Staff: Payroll Staff/Part-Time  
 365. Other Staff: Nonpayroll Staff/Full-Time  
 366. Other Staff: Nonpayroll Staff/Part-Time

## NUMBER OF STAFF BY RACE

367. Number of Staff By Race: Paid Staff/Full-time  
 368. Number of Staff By Race: Paid Staff/Part-Time  
 369. Number of Staff By Race: Unpaid/Full-Time  
 370. Number of Staff By Race: Unpaid/Part-Time  
 371. Number of White Staff: Paid/Full-time  
 372. Number of White Staff: Paid/Part-Time  
 373. Number of White Staff: Unpaid/Full-Time  
 374. Number of White Staff: Unpaid/Part-Time  
 375. Number of Black Staff: Paid/Full-time

IVX

VARIABLE DESCRIPTION LIST

CENSUS OF STATE ADULT CORRECTIONAL FACILITIES, 1979

- 376. Number of Black Staff: Paid/Part-Time
- 377. Number of Black Staff: Unpaid/Full-Time
- 378. Number of Black Staff: Unpaid/Part-Time
- 379. Number of Hispanic Staff: Paid/Full-time
- 380. Number of Hispanic Staff: Paid/Part-Time
- 381. Number of Hispanic Staff: Unpaid/Full-Time
- 382. Number of Hispanic Staff: Unpaid/Part-Time
- 383. Number of White Hispanic Staff: Paid/Full-time
- 384. Number of White Hispanic Staff: Paid/Part-Time
- 385. Number of White Hispanic Staff: Unpaid/Full-Time
- 386. Number of white Hispanic Staff: Unpaid/Part-Time
- 387. Number of Black Hispanic Staff: Paid/Full-time
- 388. Number of Black Hispanic Staff: Paid/Part-Time
- 389. Number of Black Hispanic Staff: Unpaid/Full-Time
- 390. Number of Black Hispanic Staff: Unpaid/Part-Time
- 391. American Indian/Alaskan Native: Paid/Full-time
- 392. American Indian/Alaskan Native: Paid/Part-Time
- 393. American Indian/Alaskan Native: Unpaid/Full-Time
- 394. American Indian/Alaskan Native: Unpaid/Full-Time
- 395. Number of Asian/Pacific Islander: Paid/Full-time
- 396. Number of Asian/Pacific Islander: Paid/Part-Time
- 397. # of Asian/Pacific Islander: Unpaid/Full-Time
- 398. # of Asian/Pacific Islander: Unpaid/Part-Time

MEDICAL EXAMINATION

- 399. Percentage of Inmates Given Medical Exam on Entry
- 400. Medical Exam Given Annually For All Inmates?
- 401. Medical Exam Given Annually For Inmates Over 50?
- 402. Medical Exam Given Biennially For All Inmates?
- 403. Medical Exam Given Biennially Inmates Over 50?
- 404. Medical Exam Given When Needed?
- 405. Medical Exam-Other
- 406. Medical History Taken: Admission Exam
- 407. Medical History Taken: Post Admission Exam
- 408. Blood Pressure Taken: Admission Exam
- 409. Blood Pressure taken: Post Admission Exam
- 410. Blood Sample Taken For VD: Admission Exam
- 411. Blood Sample Taken For VD: Post Admission Exam
- 412. Blood Sample Taken For Hepatitis: Admission Exam
- 413. Blood Sample Taken Hepatitis: Post Admis Exam
- 414. Blood Sample Taken For Other: Admission Exam
- 415. Blood Sample Taken For Other: Post Admis Exam
- 416. Skin Test For TB: Admission Exam
- 417. Skin Test For TB: Post Admission Exam
- 418. Chest X-Ray Given: Admission Exam
- 419. Chest X-Ray Given: Post Admission Exam
- 420. Dental Exam Given: Admission Exam

XV

VARIABLE DESCRIPTION LIST

CENSUS OF STATE ADULT CORRECTIONAL FACILITIES, 1979

- 421. Dental Exam Given: Post Admission Exam
- 422. Eye Exam Given: Admission Exam
- 423. Eye Exam Given: Post Admission Exam
- 424. Hearing Exam Given: Admission Exam
- 425. Hearing Exam given: Post Admission Exam
- 426. Height Measured: Admission Exam
- 427. Height Measured: Post Admission Exam
- 428. Weight Measured: Admission Exam
- 429. Weight Measured: Post Admission Exam
- 430. Pulse Taken: Admission Exam
- 431. Pulse Taken: Post Admission Exam
- 432. Temperature Taken: Admission Exam
- 433. Temperature Taken: Post Admission Exam
- 434. Urine Sample Taken: Admission Exam
- 435. Urine Sample Taken: Post Admission Exam
- 436. Heartbeat Checked: Admission Exam
- 437. Heartbeat Checked: Post Admission Exam
- 438. Pap Smear Taken: Admission Exam
- 439. Pap Smear Taken: Post Admission Exam
- 440. Throat Culture Taken: Admission Exam
- 441. Throat Culture Taken: Post Admission Exam
- 442. Rectal Exam Given: Admission Exam
- 443. Rectal Exam Given: Post Admission Exam
- 444. Liver/Abdominal Exam Given: Admission Exam
- 445. Liver/Abdominal Exam Given: Post Admission Exam
- 446. Psychological Screening: Admission Exam
- 447. Psychological Screening: Post Admission Exam
- 448. Other 1: Admission Exam
- 449. Other 1: Post Admission Exam
- 450. Other 2: Admission Exam
- 451. Other 2: Post Admission Exam
- 452. Is There An In House Hospital?
- 453. Access to a Hospital Prison Ward
- 454. Shares Medical Facilities of Another Prison
- 455. Has an Infirmary in This Facility With Beds
- 456. Has an Infirmary in This Facility Without Beds
- 457. Has Medical Examining Room In This Facility
- 458. Has No Medical Facilities Available
- 459. Medical Facilities: Other
- 460. Number of Prescription Drug Users: Total
- 461. Number of Prescription Drug Users: Male
- 462. Number of Prescription Drug Users: Female
- 463. # Taking Prescription Drugs For Depression: Total
- 464. # Taking Prescription Drugs For Depression: Male
- 465. # Take Prescription Drugs For Depression: Female

VARIABLE DESCRIPTION LIST

CENSUS OF STATE ADULT CORRECTIONAL FACILITIES, 1979

NUMBER OF DEATHS

- 466. Total Number of Inmate Deaths in 1978: Male
- 467. Total Number of Inmate Deaths in 1978: Female
- 468. Cause of Death-Illness/Natural Causes: Male
- 469. Cause of Death-Illness/Natural Causes: Female
- 470. Cause of Death-Suicide: Male
- 471. Cause of Death-Suicide: Female
- 472. Cause of Death-Accidental Injury to Self: Male
- 473. Cause of Death-Accidental Injury to Self: Female
- 474. Cause of Death-Injury By Another Person: Male
- 475. Cause of Death-Injury By Another Person: Female
- 476. Cause of Death-Other: Male
- 477. Cause of Death-Other: Female

GENERAL INFORMATION

- 478. Does Facility Operate a Non-residential Program?
- 479. Number of Males in Non-residential Program?
- 480. Number of Females in Non-residential Program?
- 481. What was the Original Use of This Structure?
- 482. What is the Average Length of Stay: Days
- 483. What is the Average Length of Stay: Months
- 484. Expenditures: Total
- 485. Expenditures: Current Operations
- 486. Expenditures: Capital Outlay
- 487. Payroll
- 488. 1974 Census: Type of Facility
- 489. 1974 Census: Total Inmate Population
- 490. Survey Sample Unit
- 491. Agency Name
- 492. Agency Address
- 493. City

DECK IDENTIFICATION NUMBER IS '01'

DK 1 COL 1- 2

VAR 0001  
REF 0001

ICPSR STUDY NUMBER-7852  
LOC 1 WIDTH: 4

NO MISSING DATA CODES  
DK 1 COL 3- 6

STUDY ID NUMBER

7852. The ICPSR has attached this number as a study identification number.

VAR 0002  
REF 0002

ICPSR VERSION NUMBER-1  
LOC 5 WIDTH 1

NO MISSING DATA CODES  
DK 1 COL 7

VERSION NUMBER

1. This is the first version of this study.

VAR 0003  
REF 0003

ICPSR PART NUMBER-1  
LOC 6 WIDTH 1

NO MISSING DATA CODES  
DK 1 COL 8

PART NUMBER

1. The entire study is contained in one file.

VAR 0004  
REF 0004

SEQUENCE NUMBER  
LOC 7 WIDTH 3

NO MISSING DATA CODES  
DK 1 COL 9-11

SEQUENCE NUMBER

The ICPSR has attached a number to every case. This number uniquely identifies each case in this survey.

2  
VAR 0005 FORM NUMBER NO MISSING DATA CODES  
REF 0005 LOC 10 WIDTH 2 DK 1 COL 12-13

Form number  
-----

- 42. Short form
- 43. Long form
- 99. NA

.....  
VAR 0006 STATE NUMBER NO MISSING DATA CODES  
REF 0006 LOC 12 WIDTH 2 DK 1 COL 14-15

State number  
-----

Each state and the District of Columbia have been assigned a unique number from 01 (Alabama) to 51 (Wyoming) in alphabetical order.

- 99. NA

.....  
VAR 0007 COUNTY NO MISSING DATA CODES  
REF 0007 LOC 14 WIDTH 3 DK 1 COL 16-18

County  
-----

This code identifies the county in which the facility is located. Counties within a state are ordered alphabetically and assigned a unique number starting with "001". Anderson County, Texas and Adams County, Pennsylvania each have a unique number "001" as the first County alphabetically in their respective states.

3  
VAR 0008 GOVERNMENT ID NO MISSING DATA CODES  
REF 0008 LOC 17 WIDTH 9 DK 1 COL 19-27

Government ID  
-----

.....  
VAR 0009 AGENCY ID NO MISSING DATA CODES  
REF 0009 LOC 26 WIDTH 7 DK 1 COL 28-34

Agency ID  
-----

.....  
VAR 0010 TYPE OF INSTITUTION NO MISSING DATA CODES  
REF 0010 LOC 33 WIDTH 1 DK 1 COL 35

Type of institution: Confinement facilities  
-----

- 2. Primarily a maximum (closed) security facility
- 3. Primarily a medium security facility
- 4. Primarily a minimum security facility
- 5. Primarily a classification, diagnostic, and/or reception facility
- 6. Medical facility or hospital
- 8. Youthful offender facility

Community-based facilities

- 7. All facilities

.....  
VAR 0011 NUMBER OF EMPLOYEES MD=0  
REF 0011 LOC 34 WIDTH 1 DK 1 COL 36

Number of employees  
-----

- 1. 1 employee
- 2. 2-4 employees

4  
(CONTINUED)

3. 5-9 employees
4. 10-24 employees
5. 25-49 employees
6. 50-99 employees
7. 100-199 employees
8. 200-299 employees
9. 300 or more employees

0. Inap., Question not relevant to facility

.....  
VAR 0012      SEX OF INMATES      NO MISSING DATA CODES  
REF 0012      LOC 35 WIDTH 1      DK 1 COL 37

Sex of inmates

1. Facility holds males only
2. Facility holds females only
3. Facility holds males and females

.....  
VAR 0013      TYPE OF FACILITY      MD=0  
REF 0013      LOC 36 WIDTH 1      DK 1 COL 38

Q.1a What type of facility is this?

1. Maximum (or closed) security facility
2. Medium security facility
3. Minimum security facility
4. No security classification

0. Inap., Question not relevant to facility

.....  
VAR 0014      FAC USED: YOUTH CONFINEMENT      MD=0 OR GE 9  
REF 0014      LOC 37 WIDTH 1      DK 1 COL 39

Q.2 What are the functions of this facility? Mark (X) all that apply.

(CONTINUED)

Q.2a Primarily for confinement of "youthful offenders" (persons held under special "youth" statutes, e.g., "youthful offenders" in California, "adolescents" or "minors" in New York, etc.).

1. Yes

9. NA

0. Inap., Question not marked

.....  
VAR 0015      FAC USED: CLASSIFICATION      MD=0 OR GE 9  
REF 0015      LOC 38 WIDTH 1      DK 1 COL 40

Q.2b Reception/diagnosis and classification

<See question Q.2 for complete question text.>

2. Yes

9. NA

0. Inap., Question not marked

.....  
VAR 0016      FAC USED: MEDICAL TREATMENT      MD=0 OR GE 9  
REF 0016      LOC 39 WIDTH 1      DK 1 COL 41

Q.2c Medical treatment or hospitalization

<See question Q.2 for complete question text.>

3. Yes

9. NA

0. Inap., Question not marked

VAR 0017 FAC USED: ADULT CONFINEMENT MD=0  
REF 0017 LOC 40 WIDTH 1 DK 1 COL 42

Q.2d General adult population confinement

<See question Q.2 for complete question text.>

- 4. Yes
0. Inap., Question not marked

VAR 0018 FAC USED: OTHER MD=0
REF 0018 LOC 41 WIDTH 1 DK 1 COL 43

Q.2e Other (e.g., psychiatric care, etc.)

<See question Q.2 for complete question text.>

- 5. Yes
0. Inap., Question not marked

VAR 0019 FACILITY CAPACITY NO MISSING DATA CODES
REF 0019 LOC 42 WIDTH 4 DK 1 COL 44-47

Q.3 What is the rated capacity of this facility? If you have more than one rating, please report the rating under which the facility is currently operating.

Actual number coded 7 to 4,189

VAR 0020 F HAS STUDY RELEASE PROG NO MISSING DATA CODES
REF 0020 LOC 46 WIDTH 1 DK 1 COL 48

Q.4 Does your facility have a study release program? Mark "Yes" regardless of whether inmates are paid for attending classes.

(CONTINUED)

- 1. Yes
2. No

VAR 0021 F HAS WORK RELEASE PROG NO MISSING DATA CODES
REF 0021 LOC 47 WIDTH 1 DK 1 COL 49

Q.5 Does your facility have a work release program?

- 1. Yes
2. No

VAR 0022 TOT #: MALE TOTAL NO MISSING DATA CODES
REF 0022 LOC 48 WIDTH 4 DK 1 COL 50-53

Q.6 What was the inmate count in this facility on November 14, 1979? Please count all male and female inmates who had a bed reserved for them in this facility, including sentenced and unsentenced inmates, probation and parole violators, and civil and diagnostic commitments. This count should include all inmates who are temporarily absent from this facility for court appearances, brief furloughs, etc. This count should exclude all inmates who are on escape or away without leave (AWOL). Count as sentenced, any inmate who has been sentenced for one or more crimes but may be pending sentence for another crime. Also, count technical violators of probation or parole as sentenced.

Q.6a(1) TOTAL number of inmates--Male

Actual number coded 0 to 4,253

VAR 0023 TOT #: FEMALE TOTAL NO MISSING DATA CODES
REF 0023 LOC 52 WIDTH 3 DK 1 COL 54-56

Q.6a(2) TOTAL number of inmates--Female

(CONTINUED)

<See question Q.6 for complete question text.>

Actual number coded 0 to 952

VAR 0024 TOT #: MALE SENTENCED NO MISSING DATA CODES  
REF 0024 LOC 55 WIDTH 4 DK 1 COL 57-60

Q.6a(3) TOTAL number of inmates--Sentenced male

<See question Q.6 for complete question text.>

Actual number coded 0 to 4,253

VAR 0025 TOT #: FEMALE SENTENCED NO MISSING DATA CODES  
REF 0025 LOC 59 WIDTH 3 DK 1 COL 61-63

Q.6a(4) TOTAL number of inmates--Sentenced female

<See question Q.6 for complete question text.>

Actual number coded 0 to 952

VAR 0026 TOT #: MALE UNSENTENCED NO MISSING DATA CODES  
REF 0026 LOC 62 WIDTH 3 DK 1 COL 64-66

Q.6a(4) TOTAL number of inmates--Unsentenced male

<See question Q.6 for complete question text.>

Actual number coded 0 to 308

VAR 0027 TOT #: FEMALE UNSENTENCED NO MISSING DATA CODES  
REF 0027 LOC 65 WIDTH 3 DK 1 COL 67-69

Q.6a(5) TOTAL number of inmates--Unsentenced female

<See question Q.6 for complete question text.>

Actual number coded 0 to 37

VAR 0028 # NO LEAVE: MALE TOTAL NO MISSING DATA CODES  
REF 0028 LOC 68 WIDTH 4 DK 1 COL 70-73

Q.6b(1) Number of inmates not regularly permitted to depart  
each day unaccompanied--Total male

<See question Q.6 for complete question text.>

Actual number coded 0 to 4,253

VAR 0029 # NO LEAVE: FEMALE TOTAL NO MISSING DATA CODES  
REF 0029 LOC 72 WIDTH 3 DK 1 COL 74-76

Q.6b(2) Number of inmates not regularly permitted to depart  
each day unaccompanied--Total female

<See question Q.6 for complete question text.>

Actual number coded 0 to 952

VAR 0030 # NO LEAVE: MALE SENTENCE NO MISSING DATA CODES  
REF 0030 LOC 75 WIDTH 4 DK 1 COL 77-80

Q.6b(3) Number of inmates not regularly permitted to depart  
each day unaccompanied--Sentenced male

<See question A.6 for complete question text.>

(CONTINUED)

Actual number coded 0 to 4,253

DECK IDENTIFICATION NUMBER IS '02' DK 2 COL 1-2

VAR 0001 ICPSR STUDY NUMBER-7852 NO MISSING DATA CODES  
REF 0001 LOC 1 WIDTH 4 DK 2 COL 3-6

STUDY ID NUMBER

7852. The ICPSR has attached this number as a study  
identification number.

VAR 0002 ICPSR VERSION NUMBER-1 NO MISSING DATA CODES  
REF 0002 LOC 5 WIDTH 1 DK 2 COL 7

VERSION NUMBER

1. This is the first version of this study.

VAR 0003 ICPSR PART NUMBER-1 NO MISSING DATA CODES  
REF 0003 LOC 6 WIDTH 1 DK 2 COL 8

PART NUMBER

1. The entire study is contained in one file.

VAR 0004 SEQUENCE NUMBER NO MISSING DATA CODES  
REF 0004 LOC 7 WIDTH 3 DK 2 COL 9-11

SEQUENCE NUMBER

(CONTINUED)

The ICPSR has attached a number to every case. This  
number uniquely identifies each case in this survey.

VAR 0031 # NO LEAVE: FEMALE SENTENC NO MISSING DATA CODES  
REF 0031 LOC 79 WIDTH 3 DK 2 COL 12-14

Q.6b(4) Number of inmates not regularly permitted to depart  
each day unaccompanied--Sentenced female

<See question Q.6 for complete question text.>

Actual number coded 0 to 952

VAR 0032 # NO LEAVE: MALE UNSENT NO MISSING DATA CODES  
REF 0032 LOC 82 WIDTH 3 DK 2 COL 15-17

Q.6b(5) Number of inmates not regularly permitted to depart  
each day unaccompanied--Unsentenced male

<See question Q.6 for complete question text.>

Actual number coded 0 to 308

VAR 0033 # NO LEAVE: FEMALE UNSENT NO MISSING DATA CODES  
REF 0033 LOC 85 WIDTH 3 DK 2 COL 18-20

Q.6b(6) Number of inmates not regularly permitted to depart  
each day unaccompanied--Unsentenced female

<See question Q.6 for complete question text.>

Actual number coded 0 to 37



VAR 0034 # OK LEAVE: MALE TOTAL NO MISSING DATA CODES  
REF 0034 LOC 88 WIDTH 4 DK 2 COL 21-24

Q.6c(1) Total number of inmates regularly permitted to depart unaccompanied by any official for the purpose of daily use of community resources, such as schools or treatment programs, or for seeking and holding employment--Total male

<See question Q.6 for complete question text.>

Actual number coded 0 to 285

VAR 0035 # OK LEAVE: FEMALE TOTAL NO MISSING DATA CODES  
REF 0035 LOC 92 WIDTH 3 DK 2 COL 25-27

Q.6c(2) Total number of inmates regularly permitted to depart unaccompanied by any official for the purpose of daily use of community resources, such as schools or treatment programs, or for seeking and holding employment--Total female

<See question Q.6 for complete question text.>

Actual number coded 0 to 72

VAR 0036 # OK LEAVE: MALE SENTENCE NO MISSING DATA CODES  
REF 0036 LOC 95 WIDTH 4 DK 2 COL 28-31

Q.6c(3) Total number of inmates regularly permitted to depart unaccompanied by any official for the purpose of daily use of community resources, such as schools or treatment programs, or for seeking and holding employment--Sentenced male

<See question Q.6 for complete question text.>

Actual number coded 0 to 285

VAR 0037 # OK LEAVE: FEMALE SENTENC NO MISSING DATA CODES  
REF 0037 LOC 99 WIDTH 3 DK 2 COL 32-34

Q.6c(4) Total number of inmates regularly permitted to depart unaccompanied by any official for the purpose of daily use of community resources, such as schools or treatment programs, or for seeking and holding employment--Sentenced female

<See question Q.6 for complete question text.>

Actual number coded 0 to 72

VAR 0038 # OK LEAVE: MALE UNSENT NO MISSING DATA CODES  
REF 0038 LOC 102 WIDTH 3 DK 2 COL 35-37

Q.6c(5) Total number of inmates regularly permitted to depart unaccompanied by any official for the purpose of daily use of community resources, such as schools or treatment programs, or for seeking and holding employment--Unsentenced male

<See question Q.6 for complete question text.>

Actual number coded 0 to 6

VAR 0039 # OK LEAVE: FEMALE UNSENT NO MISSING DATA CODES  
REF 0039 LOC 105 WIDTH 3 DK 2 COL 38-40

Q.6c(6) Total number of inmates regularly permitted to depart unaccompanied by any official for the purpose of daily use of community resources, such as schools or treatment programs, or for seeking and holding employment--Unsentenced female

<See question Q.6 for complete question text.>

Actual number coded 0 to 2

VAR 0040 # STDY REL: MALE TOTAL MD=-1 OR GE 9999  
REF 0040 LOC 108 WIDTH 4 DK 2 COL 41-44

Q.6c(1)1 Number of inmates on study release (include  
inmates who are paid)--Total male

<See question Q.5 for complete question text.>

Actual number coded 0 to 74

9999. NA  
-001. Inap., Coded 2 in question Q.4

VAR 0041 # STDY REL: FEMALE TOTAL MD=-1 OR GE 999  
REF 0041 LOC 112 WIDTH 3 DK 2 COL 45-47

Q.6c(2)1 Number of inmates on study release (include  
inmates who are paid)--Total female

<See question Q.6 for complete question text.>

Actual number coded 0 to 10

999. NA  
-01. Inap., Coded 2 in question Q.4

VAR 0042 # STDY REL: MALE SENTENCE MD=-1  
REF 0042 LOC 115 WIDTH 4 DK 2 COL 48-51

Q.6c(3)1 Number of inmates on study release (include  
inmates who are paid)--Sentenced male

<See question Q.6 for complete question text.>

Actual number coded 0 to 74

(CONTINUED)

-1. Inap., Coded 2 in question Q.4

VAR 0043 # STDY REL: FEMALE SENTENC MD=-1  
REF 0043 LOC 119 WIDTH 3 DK 2 COL 52-54

Q.6c(4)1 Number of inmates on study release (include  
inmates who are paid)--Sentenced female

<See question Q.6 for complete question text.>

Actual number coded 0 to 10

-1. Inap., Coded 2 in question Q.4

VAR 0044 # STDY REL: MALE UNSENT MD=-1  
REF 0044 LOC 122 WIDTH 3 DK 2 COL 55-57

Q.6c(5)1 Number of inmates on study release (include  
inmates who are paid)--Unsentenced male

<See question Q.6 for complete question text.>

Actual number coded 0 to 1

-1. Inap., Coded 2 in question Q.4

VAR 0045 # STDY REL: FEMALE UNSENT MD=-1  
REF 0045 LOC 125 WIDTH 3 DK 2 COL 58-60

Q.6c(6)1 Number of inmates on study release (include  
inmates who are paid)--Unsentenced female

<See question Q.6 for complete question text.>

Actual number coded 0 to 0

(CONTINUED)

-1. Inap., Coded 2 in question Q.4

.....

VAR 0046 # WRK REL: MALE TOTAL MD=-1  
REF 0046 LOC 128 WIDTH 4 DK 2 COL 61-64

Q.6c(1)2 Number of inmates on work release--Total male

&lt;See question Q.6 for complete question text.&gt;

Actual number coded 0 to 285

-1. Inap., Coded 2 in question Q.5

.....

VAR 0047 # WRK REL: FEMALE TOTAL MD=-1  
REF 0047 LOC 132 WIDTH 3 DK 2 COL 65-67

Q.6c(2)2 Number of inmates on work release--Total female

&lt;See question Q.6 for complete question text.&gt;

Actual number coded 0 to 58

-1. Inap., Coded 2 in question Q.5

.....

VAR 0048 # WRK REL: MALE SENTENCE MD=-1  
REF 0048 LOC 135 WIDTH 4 DK 2 COL 68-71

Q.6c(3)2 Number of inmates on work release--Sentenced male

&lt;See question Q.6 for complete question text.&gt;

Actual number coded 0 to 285

-1. Inap., Coded 2 in question Q.5

VAR 0049 # WRK REL: FEMALE SENTENCE MD=-1  
REF 0049 LOC 139 WIDTH 3 DK 2 COL 72-74

Q.6c(4)2 Number of inmates on work release--Sentenced female

&lt;See question Q.6 for complete question text.&gt;

Actual number coded 0 to 58

-1. Inap., Coded 2 in question Q.5

.....

VAR 0050 # WRK REL: MALE UNSENT MD=-1  
REF 0050 LOC 142 WIDTH 3 DK 2 COL 75-77

Q.6c(5)2 Number of inmates on work release--Unsentenced male

&lt;See question Q.6 for complete question text.&gt;

Actual number coded 0 to 6

-1. Inap., Coded 2 in question Q.5

.....

VAR 0051 # WRK REL: FEMALE UNSENT MD=-1  
REF 0051 LOC 145 WIDTH 3 DK 2 COL 78-80

Q.6c(6)2 Number of inmates on work release--Unsentenced female

&lt;See question Q.6 for complete question text.&gt;

Actual number coded 0 to 0

-1. Inap., Coded 2 in question Q.5

DECK IDENTIFICATION NUMBER IS '03' DK 3 COL 7-2

VAR 0001 ICPSR STUDY NUMBER-7852 NO MISSING DATA CODES  
REF 0001 LOC 1 WIDTH 4 DK 3 COL 3-6

STUDY ID NUMBER

7852. The ICPSR has attached this number as a study identification number.

VAR 0002 ICPSR VERSION NUMBER-1 NO MISSING DATA CODES  
REF 0002 LOC 5 WIDTH 1 DK 3 COL 7

VERSION NUMBER

1. This is the first version of this study.

VAR 0003 ICPSR PART NUMBER-1 NO MISSING DATA CODES  
REF 0003 LOC 6 WIDTH 1 DK 3 COL 8

PART NUMBER

1. The entire study is contained in one file.

VAR 0004 SEQUENCE NUMBER NO MISSING DATA CODES  
REF 0004 LOC 7 WIDTH 3 DK 3 COL 9-11

SEQUENCE NUMBER

The ICPSR has attached a number to every case. This number uniquely identifies each case in this survey.

VAR 0052 # OTHR REL: MALE TOTAL NO MISSING DATA CODES  
REF 0052 LOC 148 WIDTH 3 DK 3 COL 12-14

Q.6c(1)3 Number of inmates on other types of unsupervised release--Total male

<See question Q.6 for complete question text.>

Actual number coded 0 to 66

VAR 0053 # OTHR REL: FEMALE TOTAL NO MISSING DATA CODES  
REF 0053 LOC 151 WIDTH 3 DK 3 COL 15-17

Q.6c(2)3 Number of inmates on other types of unsupervised release--Total female

<See question Q.6 for complete question text.>

Actual number coded 0 to 30

VAR 0054 # OTHR REL: MALE SENTENC NO MISSING DATA CODES  
REF 0054 LOC 154 WIDTH 3 DK 3 COL 18-20

Q.6c(3)3 Number of inmates on other types of unsupervised release--Sentenced male

<See question Q.6 for complete question text.>

Actual number coded 0 to 66

VAR 0055 # OTHR REL: FEMALE SENTENC NO MISSING DATA CODES  
REF 0055 LOC 157 WIDTH 3 DK 3 COL 21-23

Q.6c(4)3 Number of inmates on other types of unsupervised release--Sentenced female

(CONTINUED)

<See question Q.6 for complete question text.>

Actual number coded 0 to 30

VAR 0056 # OTHR REL: MALE UNSENT NO MISSING DATA CODES  
REF 0056 LOC 160 WIDTH 2 DK 3 COL 24-25

Q.6c(5)3 Number of inmates on other types of unsupervised  
release--Unsentenced male

<See question Q.6 for complete question text.>

Actual number coded 0 to 1

VAR 0057 # OTHR REL: FEMALE UNSENT NO MISSING DATA CODES  
REF 0057 LOC 162 WIDTH 2 DK 3 COL 26-27

Q.6c(6)3 Number of inmates on other types of unsupervised  
release--Unsentenced female

<See question Q.6 for complete question text.>

Actual number coded 0 to 2

VAR 0058 # MAX SECURITY: MALE NO MISSING DATA CODES  
REF 0058 LOC 164 WIDTH 4 DK 3 COL 28-31

Q.7 On November 14, 1979, how many inmates in this facility  
were classified under each of the types of security listed?  
The total should be the same as reported in item 6a.

Q.7a(1) Maximum security--Male

Actual number coded 0 to 4,253

VAR 0059 # MAX SECURITY: FEMALE NO MISSING DATA CODES  
REF 0059 LOC 168 WIDTH 3 DK 3 COL 32-34

Q.7a(2) Maximum security--Female

<See question Q.7 for complete question text.>

Actual number coded 0 to 677

VAR 0060 # CLOSE SECURITY: MALE NO MISSING DATA CODES  
REF 0060 LOC 171 WIDTH 4 DK 3 COL 35-38

Q.7b(1) Close security--Male

<See question Q.7 for complete question text.>

Actual number coded 0 to 2,135

VAR 0061 # CLOSE SECURITY: FEMALE NO MISSING DATA CODES  
REF 0061 LOC 175 WIDTH 3 DK 3 COL 39-41

Q.7b(2) Close security--Female

<See question Q.7 for complete question text.>

Actual number coded 0 to 276

VAR 0062 # MED SECURITY: MALE NO MISSING DATA CODES  
REF 0062 LOC 178 WIDTH 4 DK 3 COL 42-45

Q.7c(1) Medium security--Male

<See question Q.7 for complete question text.>

Actual number coded 0 to 2,167

VAR 0063 # MED SECURITY: FEMALE NO MISSING DATA CODES  
REF 0063 LOC 182 WIDTH 3 DK 3 COL 46-48

Q.7c(2) Medium security--Female

<See question Q.7 for complete question text.>

Actual number coded 0 to 434

VAR 0064 # MIN SECURITY: MALE NO MISSING DATA CODES  
REF 0064 LOC 185 WIDTH 4 DK 3 COL 49-52

Q.7c(1) Minimum security--Male

<See question Q.7 for complete question text.>

Actual number coded 0 to 1,457

VAR 0065 # MIN SECURITY: FEMALE NO MISSING DATA CODES  
REF 0065 LOC 189 WIDTH 3 DK 3 COL 53-55

Q.7c(2) Minimum security--Female

<See question Q.7 for complete question text.>

Actual number coded 0 to 296

VAR 0066 # NOT CLASS/SENT: MALE NO MISSING DATA CODES  
REF 0066 LOC 192 WIDTH 4 DK 3 COL 56-59

Q.7d(1) Not classified or not yet sentenced--Male

<See question Q.7 for complete question text.>

Actual number coded 0 to 693

VAR 0067 # NOT CLASS/SENT: FEMALE NO MISSING DATA CODES  
REF 0067 LOC 196 WIDTH 3 DK 3 COL 60-62

Q.7d(2) Not classified or not yet sentenced--Female

<See question Q.7 for complete question text.>

Actual number coded 0 to 77

VAR 0068 OTHR SECURITY: MALE NO MISSING DATA CODES  
REF 0068 LOC 199 WIDTH 3 DK 3 COL 63-65

Q.7e(1) Other security--Male

<See question Q.7 for complete question text.>

Actual number coded 0 to 133

VAR 0069 OTHR SECURITY: FEMALE NO MISSING DATA CODES  
REF 0069 LOC 202 WIDTH 3 DK 3 COL 66-68

Q.7e(2) Other security--Female

<See question Q.7 for complete question text.>

Actual number coded 0 to 45

VAR 0070 TOTAL INMATE POP: MALE MD=GE 9999  
REF 0070 LOC 205 WIDTH 4 DK 3 COL 69-72

Q.8 What was the TOTAL inmate population, BY RACE, on November 14, 1979? If counts are not available from records, please provide reasonable estimates and indicate each with an asterisk (\*).

Q.8a(1) TOTAL inmate population--Male

(CONTINUED)

Actual number coded 0 to 4,253

9999. NA

VAR 0071 TOTAL INMATE POP: FEMALE MD=GE 999  
REF 0071 LOC 209 WIDTH 3 DK 3 COL 73-75

Q.8a(2) TOTAL inmate population--Female

&lt;See question Q.8 for complete question text.&gt;

Actual number coded 0 to 952

999. NA

VAR 0072 WH, NOT HISPANIC POP: MA NO MISSING DATA CODES  
REF 0072 LOC 212 WIDTH 4 DK 3 COL 76-79

Q.8 b(1) White, not of Hispanic origin--Male

&lt;See question Q.8 for complete question text.&gt;

Actual number coded 0 to 1,655

DECK IDENTIFICATION NUMBER IS '04' DK 4 COL 1-2

VAR 0001 ICPSR STUDY NUMBER-7852 NO MISSING DATA CODES  
REF 0001 LOC 1 WIDTH 4 DK 4 COL 3-6

STUDY ID NUMBER

7852. The ICPSR has attached this number as a study identification number.

VAR 0002 ICPSR VERSION NUMBER-1 NO MISSING DATA CODES  
REF 0002 LOC 5 WIDTH 1 DK 4 COL 7

VERSION NUMBER

1. This is the first version of this study.

VAR 0003 ICPSR PART NUMBER-1 NO MISSING DATA CODES  
REF 0003 LOC 6 WIDTH 1 DK 4 COL 8

PART NUMBER

1. The entire study is contained in one file.

VAR 0004 SEQUENCE NUMBER NO MISSING DATA CODES  
REF 0004 LOC 7 WIDTH 3 DK 4 COL 9-11

SEQUENCE NUMBER

The ICPSR has attached a number to every case. This number uniquely identifies each case in this survey.

VAR 0073 WH, NOT HISPANIC POP: FE NO MISSING DATA CODES  
REF 0073 LOC 216 WIDTH 3 DK 4 COL 12-14

Q.8 b(2) White, not of Hispanic origin--Female

&lt;See question Q.8 for complete question text.&gt;

Actual number coded 0 to 380

VAR 0074 BL, NOT HISPANIC POP: MA NO MISSING DATA CODES  
REF 0074 LOC 219 WIDTH 4 DK 4 COL 15-18

Q.8 c(1) Black, not of Hispanic origin--Male  
-----

<See question Q.8 for complete question text.>

Actual number coded 0 to 3,045  
.....

VAR 0075 BL, NOT HISPANIC POP: FE NO MISSING DATA CODES  
REF 0075 LOC 223 WIDTH 3 DK 4 COL 19-21

Q.8 c(2) Black, not of Hispanic origin--Female  
-----

<See question Q.8 for complete question text.>

Actual number coded 0 to 388  
.....

VAR 0076 TOTAL HISPANIC POP: MA MD=GE 9999  
REF 0076 LOC 226 WIDTH 4 DK 4 COL 22-25

Q.8d(1) Hispanic origin (Persons of Mexican, Puerto Rican,  
Cuban, Central or South American, or other Spanish culture  
or origin, excluding Brazil, Jamaica, and Haiti)--Male  
-----

<See question Q.8 for complete question text.>

Actual number coded 0 to 687

9999. NA  
.....

VAR 0077 TOTAL HISPANIC POP: FE MD=GE 999  
REF 0077 LOC 230 WIDTH 3 DK 4 COL 26-28

Q.8d(2) Hispanic origin (Persons of Mexican, Puerto Rican,  
Cuban, Central or South American, or other Spanish culture

(CONTINUED)

or origin, excluding Brazil, Jamaica, and Haiti)--Female  
-----

<See question Q.8 for complete question text.>

Actual number coded 0 to 180

999. NA  
.....

VAR 0078 WHITE HISPANIC POP: MA MD=GE 9999  
REF 0078 LOC 233 WIDTH 4 DK 4 COL 29-32

Q.8d(1)1 White, Hispanic origin--Male  
-----

<See question Q.8 for complete question text.>

Actual number coded 0 to 608

9999. NA  
.....

VAR 0079 WHITE HISPANIC POP: FE MD=GE 999  
REF 0079 LOC 237 WIDTH 3 DK 4 COL 33-35

Q.8d(2)1 White, Hispanic origin--Female  
-----

<See question Q.8 for complete question text.>

Actual number coded 0 to 44

999. NA  
.....

VAR 0080 BLACK HISPANIC POP: MA MD=GE 9999  
REF 0080 LOC 240 WIDTH 4 DK 4 COL 36-39

Q.8d(1)2 Black, Hispanic origin--Male  
-----



(CONTINUED)

&lt;See question Q.8 for complete question text.&gt;

Actual number coded 0 to 24

9999. NA

VAR 0081 BLACK HISPANIC POP: FE MD=GE 999  
 REF 0081 LOC 244 WIDTH 3 DK 4 COL 40-42

Q.8d(2)2 Black, Hispanic origin--Female  
 -----

&lt;See question Q.8 for complete question text.&gt;

Actual number coded 0 to 3

999. NA

VAR 0082 NATIVE AMERICAN POP: MA NO MISSING DATA CODES  
 REF 0082 LOC 247 WIDTH 4 DK 4 COL 43-46

Q.8 e(1) American Indian/Alaskan Native--Male  
 -----

&lt;See question Q.8 for complete question text.&gt;

Actual number coded 0 to 131

VAR 0083 NATIVE AMERICAN POP: FE NO MISSING DATA CODES  
 REF 0083 LOC 251 WIDTH 3 DK 4 COL 47-49

Q.8 e(2) American Indian/Alaskan Native--Female  
 -----

&lt;See question Q.8 for complete question text.&gt;

Actual number coded 0 to 28

VAR 0084 ASIAN/PAC ISLAND POP: MA NO MISSING DATA CODES  
 REF 0084 LOC 254 WIDTH 4 DK 4 COL 50-53

Q.8 f(1) Asian/Pacific Islander--Male  
 -----

&lt;See question Q.8 for complete question text.&gt;

Actual number coded 0 to 206

VAR 0085 ASIAN/PAC ISLAND POP: FE NO MISSING DATA CODES  
 REF 0085 LOC 258 WIDTH 3 DK 4 COL 54-56

Q.8 f(2) Asian/Pacific Islander--Female  
 -----

&lt;See question Q.8 for complete question text.&gt;

Actual number coded 0 to 25

VAR 0086 US VETS POP: MALE MD=GE 9999  
 REF 0086 LOC 261 WIDTH 4 DK 4 COL 57-60

Q.9a(1) How many of the inmate population on November 14,  
 1979, were veterans of the U.S. Armed Forces?--Male  
 -----

Actual number coded 0 to 660

9999. NA

VAR 0087 US VETS POP: FEMALE MD=GE 999  
 REF 0087 LOC 265 WIDTH 3 DK 4 COL 61-63

Q.9a(2) How many of the inmate population on November 14,  
 1979, were veterans of the U.S. Armed Forces?--Female  
 -----

Actual number coded 0 to 4

(CONTINUED)

999. NA

VAR 0088 VETNAM VETS POP: MALE MD=GE 9999  
REF 0088 LOC 268 WIDTH 4 DK 4 COL 64-67

Q.9b(1) How many of the inmate population on November 14, 1979, were Vietnam Era (August 1964-April 1975)?--Male

Actual number coded 0 to 332

9999. NA

VAR 0089 VETNAM VETS POP: FEMALE NO MISSING DATA CODES  
REF 0089 LOC 272 WIDTH 3 DK 4 COL 68-70

Q.9b(2) How many of the inmate population on November 14, 1975, were Vietnam Era (August 1964-April 1975)?--Female

Actual number coded 0 to 2

VAR 0090 VA REP AT/VISIT FAC? NO MISSING DATA CODES  
REF 0090 LOC 275 WIDTH 1 DK 4 COL 71

Q.10a Is there a representative of the Veterans Administration (VA) or any other veteran's organization stationed on or regularly visiting this facility?

1. No
2. Yes

VAR 0091 VET REP AT/VIS FAC: VA MD=0 OR GE 9  
REF 0091 LOC 276 WIDTH 1 DK 4 COL 72

Q.10b(1) What veteran's organization is stationed in or visits this facility regularly?

1. Veterans Administration

9. NA

0. Inap., Coded 1 or 9 in Q.10a

VAR 0092 VET REP AT/VIS FAC: OTHER MD=0 OR GE 9  
REF 0092 LOC 277 WIDTH 1 DK 4 COL 73

Q.10b(2) What veteran's organization is stationed in or visits this facility regularly?

2. Other

9. NA

0. Inap., Coded 1 or 9 in Q.10a

VAR 0093 VET REP AT FACILITY MD=0 OR GE 9  
REF 0093 LOC 278 WIDTH 1 DK 4 COL 74

Q.10c(1) How frequently does this representative visit this facility?

1. Representative stationed in this facility

9. NA

0. Inap., Coded 1 or 9 in Q.10a

VAR 0094 HOW FREQ VET REP VISIT MD=0 OR GE 9  
REF 0094 LOC 279 WIDTH 1 DK 4 COL 75

Q.10c(2) How frequently does this representative visit this facility?  
-----

- 2. Other
- 3. Once a month
- 4. Upon request

- 9. NA
- 0. Inap., Coded 1 or 9 in Q.10a

VAR 0095 RATED CAPACITY: TYPE 1 MD=GE 9999  
REF 0095 LOC 280 WIDTH 4 DK 4 COL 76-79

Q.11b(2)a) Rated capacity of ONE confinement unit--Type 1  
-----

Actual number coded 0 to 242

9999. NA

VAR 0096 NOT RATED: TYPE 1 MD=0  
REF 0096 LOC 284 WIDTH 1 DK 4 COL 80

Q.11b(2)b1 Not Rated--Type 1  
-----

- 9. Not Rated, Actual number of beds coded in Q.11b(2)1
- 0. Inap., Question not answered

DECK IDENTIFICATION NUMBER IS '05' DK 5 COL 1-2  
-----

VAR 0001 ICPSR STUDY NUMBER-7852 NO MISSING DATA CODES  
REF 0001 LOC 1 WIDTH 4 DK 5 COL 3-6

STUDY ID NUMBER  
-----

7852. The ICPSR has attached this number as a study identification number.

VAR 0002 ICPSR VERSION NUMBER-1 NO MISSING DATA CODES  
REF 0002 LOC 5 WIDTH 1 DK 5 COL 7

VERSION NUMBER  
-----

1. This is the first version of this study.

VAR 0003 ICPSR PART NUMBER-1 NO MISSING DATA CODES  
REF 0003 LOC 6 WIDTH 1 DK 5 COL 8

PART NUMBER  
-----

1. The entire study is contained in one file.

VAR 0004 SEQUENCE NUMBER NO MISSING DATA CODES  
REF 0004 LOC 7 WIDTH 3 DK 5 COL 9-11

SEQUENCE NUMBER  
-----

The ICPSR has attached a number to every case. This number uniquely identifies each case in this survey.

VAR 0097 FLOOR SPACE: TYPE 1 MD=GE 99999  
REF 0097 LOC 285 WIDTH 5 DK 5 COL 12-16

Q.11b(3)1 Floor space of ONE confinement unit--Type 1

Actual square feet coded 0 to 12,040

99999. NA

VAR 0098 NUMBER UNITS: TYPE 1 MD=GE 9999  
REF 0098 LOC 290 WIDTH 4 DK 5 COL 17-20

Q.11b(4)1 Number of confinement units--Type 1

Actual number coded 0 to 2,400

9999. NA

VAR 0099 # HOURS CONFINED: TYPE 1 MD=GE 99  
REF 0099 LOC 294 WIDTH 2 DK 5 COL 21-22

Q.11b(5)1 Average number of hours per day confined to unit--Type 1

Actual hours coded 0 to 24

99. NA

VAR 0100 CONFINEMENT UNIT USE: TYPE 1 MD=0 OR GE 9  
REF 0100 LOC 296 WIDTH 1 DK 5 COL 23

Q.11b(6)1 Confinement unit use--Type 1

(CONTINUED)

- 1. General housing unit
- 2. Protective custody
- 3. Administrative segregation unit
- 4. Disciplinary action unit
- 5. Unit for sick or injured inmates
- 6. Other 1
- 7. Other 2
- 8. Other 3

- 9. NA
- 0. Inap., No unit coded

VAR 0101 SECURITY DESIGNATION: T1 MD=0 OR GE 9  
REF 0101 LOC 297 WIDTH 1 DK 5 COL 24

Q.11b(7)1 Security designation of confinement unit--Type 1

- 1. Maximum
- 2. Close
- 3. Medium
- 4. Minimum
- 5. Other 1
- 6. Other 2
- 7. Other 3
- 8. Other 4

- 9. NA
- 0. Inap., No unit coded

VAR 0102 # OF INMATES: TYPE 1 MD=GE 9999  
REF 0102 LOC 298 WIDTH 4 DK 5 COL 25-28

Q.11b(8)1 Number of inmates TODAY--Type 1

Actual number coded 0 to 2,344

9999. NA

VAR 0103 M/F USE UNIT: TYPE 1 MD=0 OR GE 9  
REF 0103 LOC 302 WIDTH 1 DK 5 COL 29

Q.11b(9)1 Male and/or female use of unit--Type 1

1. Male unit
2. Female unit
3. Both sexes in facility
9. NA
0. Inap., No unit coded

VAR 0104 RATED CAPACITY: TYPE 2 MD=GE 9999  
REF 0104 LOC 303 WIDTH 4 DK 5 COL 30-33

Q.11b(2)a2 Rated capacity of ONE confinement unit--Type 2

Actual number coded 0 to 240

9999. NA

VAR 0105 NOT RATED: TYPE 2 MD=0  
REF 0105 LOC 307 WIDTH 1 DK 5 COL 34

Q.11b(2)b2 Not Rated--Type 2

9. Not Rated, Actual number of beds coded in Q.11b(2)1
0. Inap., No unit coded or not marked

VAR 0106 FLOOR SPACE: TYPE 2 MD=GE 99999  
REF 0106 LOC 308 WIDTH 5 DK 5 COL 35-39

Q.11b(3)2 Floor space of ONE confinement unit--Type 2

(CONTINUED)

Actual square feet coded 0 to 18,564

99999. NA

VAR 0107 NUMBER UNITS: TYPE 2 MD=0 OR GE 9999  
REF 0107 LOC 313 WIDTH 4 DK 5 COL 40-43

Q.11b(4)2 Number of confinement units--Type 2

Actual number coded 1 to 2,247

9999. NA

VAR 0108 # HOURS CONFINED: TYPE 2 MD=GE 99  
REF 0108 LOC 317 WIDTH 2 DK 5 COL 44-45

Q.11b(5)2 Average number of hours per day confined to unit--Type 2

Actual hours coded 0 to 24

99. NA

VAR 0109 CONFINEMENT UNIT USE: TYPE 2 MD=0 OR GE 9  
REF 0109 LOC 319 WIDTH 1 DK 5 COL 46

Q.11b(6)2 Confinement unit use--Type 2

1. General housing unit
2. Protective custody
3. Administrative segregation unit
4. Disciplinary action unit
5. Unit for sick or injured inmates

(CONTINUED)

- 6. Other 1
- 7. Other 2
- 8. Other 3
- 9. NA
- 0. Inap., No unit coded

VAR 0110 SECURITY DESIGNATION: T2 MD=0 OR GE 9  
 REF 0110 LOC 320 WIDTH 1 DK 5 COL 47

Q.11b(7)2 Security designation of confinement unit--Type 2

- 1. Maximum
- 2. Close
- 3. Medium
- 4. Minimum
- 5. Other 1
- 6. Other 2
- 7. Other 3
- 8. Other 4
- 9. NA
- 0. Inap., No unit coded

VAR 0111 # OF INMATES: TYPE 2 MD=GE 9999  
 REF 0111 LOC 321 WIDTH 4 DK 5 COL 48-51

Q.11b(8)2 Number of inmates TODAY--Type 2

Actual number coded 0 to 2,221

9999. NA

VAR 0112 M/F USE UNIT: TYPE 2 MD=0 OR GE 9  
 REF 0112 LOC 325 WIDTH 1 DK 5 COL 52

Q.11b(9)2 Male and/or female use of unit--Type 2

- 1. Male unit
- 2. Female unit
- 3. Both sexes in facility
- 9. NA
- 0. Inap., No unit coded

VAR 0113 RATED CAPACITY: TYPE 3 MD=GE 9999  
 REF 0113 LOC 326 WIDTH 4 DK 5 COL 53-56

Q.11b(2)a3 Rated capacity of ONE confinement unit--Type 3

Actual number coded 0 to 192

9999. NA

VAR 0114 NOT RATED: TYPE 3 MD=0  
 REF 0114 LOC 330 WIDTH 1 DK 5 COL 57

Q.11b(2)b3 Not Rated--Type 3

9. Not Rated, Actual number of beds coded in Q.11b(2)1

0. Inap., No unit coded or not marked

VAR 0115 FLOOR SPACE: TYPE 3 MD=GE 99999  
 REF 0115 LOC 331 WIDTH 5 DK 5 COL 58-62

Q.11b(3)3 Floor space of ONE confinement unit--Type 3

(CONTINUED)

Actual square feet coded 0 to 16,796

9999. NA

VAR 0116 NUMBER UNITS: TYPE 3 MD=GE 9999  
REF 0116 LOC 336 WIDTH 4 DK 5 COL 63-66

Q.11b(4)3 Number of confinement units--Type 3

Actual number coded 0 to 2,008

9999. NA

VAR 0117 # HOURS CONFINED: TYPE 3 MD=GE 99  
REF 0117 LOC 340 WIDTH 2 DK 5 COL 67-68

Q.11b(5)3 Average number of hours per day confined to unit--Type 3

Actual hours coded 0 to 24

99. NA

VAR 0118 CONFINEMENT UNIT USE: TYPE 3 MD=0 OR GE 9  
REF 0118 LOC 342 WIDTH 1 DK 5 COL 69

Q.11b(6)3 Confinement unit use--Type 3

1. General housing unit
2. Protective custody
3. Administrative segregation unit
4. Disciplinary action unit
5. Unit for sick or injured inmates

(CONTINUED)

6. Other 1
7. Other 2
8. Other 3
9. NA
0. Inap., No unit coded

VAR 0119 SECURITY DESIGNATION: T3 MD=0 OR GE 9  
REF 0119 LOC 343 WIDTH 1 DK 5 COL 70

Q.11b(7)3 Security designation of confinement unit--Type 3

1. Maximum
2. Close
3. Medium
4. Minimum
5. Other 1
6. Other 2
7. Other 3
8. Other 4

9. NA
0. Inap., No unit coded

VAR 0120 # OF INMATES: TYPE 3 MD=GE 9999  
REF 0120 LOC 344 WIDTH 4 DK 5 COL 71-74

Q.11b(8)3 Number of inmates TODAY--Type 3

Actual number coded 0 to 4,244

9999. NA

VAR 0121 M/F USE UNIT: TYPE 3 MD=0 OR GE 9  
 REF 0121 LOC 348 WIDTH 1 DK 5 COL 75

Q.11b(9)3 Male and/or female use of unit--Type 3

1. Male unit
2. Female unit
3. Both sexes in facility
9. NA
0. Inap., No unit coded

VAR 0122 RATED CAPACITY: TYPE 4 MD=GE 9999  
 REF 0122 LOC 349 WIDTH 4 DK 5 COL 76-79

Q.11b(2)a4 Rated capacity of ONE confinement unit--Type 4

Actual number coded 0 to 228

9999. NA

VAR 0123 NOT RATED: TYPE 4 MD=0  
 REF 0123 LOC 353 WIDTH 1 DK 5 COL 80

Q.11b(2)b4 Not Rated--Type 4

9. Not Rated, Actual number of beds coded in Q.11b(2)1
0. Inap., No unit coded or not marked

DECK IDENTIFICATION NUMBER IS '06' DK 6 COL 1-2

VAR 0001 ICPSR STUDY NUMBER-7852 NO MISSING DATA CODES  
 REF 0001 LOC 1 WIDTH 4 DK 6 COL 3-6

STUDY ID NUMBER

7852. The ICPSR has attached this number as a study identification number.

VAR 0002 ICPSR VERSION NUMBER-1 NO MISSING DATA CODES  
 REF 0002 LOC 5 WIDTH 1 DK 6 COL 7

VERSION NUMBER

1. This is the first version of this study.

VAR 0003 ICPSR PART NUMBER-1 NO MISSING DATA CODES  
 REF 0003 LOC 6 WIDTH 1 DK 6 COL 8

PART NUMBER

1. The entire study is contained in one file.

VAR 0004 SEQUENCE NUMBER NO MISSING DATA CODES  
 REF 0004 LOC 7 WIDTH 3 DK 6 COL 9-11

SEQUENCE NUMBER

The ICPSR has attached a number to every case. This number uniquely identifies each case in this survey.



VAR 0124 FLOOR SPACE: TYPE 4 MD=GE 99999  
 REF 0124 LOC 354 WIDTH 5 DK 6 COL 12-16

Q.11b(3)4 Floor space of ONE confinement unit--Type 4  
 -----

Actual square feet coded 0 to 13,804

99999. NA

VAR 0125 NUMBER UNITS: TYPE 4 MD=GE 9999  
 REF 0125 LOC 359 WIDTH 4 DK 6 COL 17-20

Q.11b(4)4 Number of confinement units--Type 4  
 -----

Actual number coded 0 to 852

9999. NA

VAR 0126 # HOURS CONFINED: TYPE 4 MD=GE 99  
 REF 0126 LOC 363 WIDTH 2 DK 6 COL 21-22

Q.11b(5)4 Average number of hours per day confined to  
 unit--Type 4  
 -----

Actual hours coded 0 to 24

99. NA

VAR 0127 CONFINEMENT UNIT USE: TYPE 4 MD=0 OR GE 9  
 REF 0127 LOC 365 WIDTH 1 DK 6 COL 23

Q.11b(6)4 Confinement unit use--Type 4  
 -----

(CONTINUED)

1. General housing unit
2. Protective custody
3. Administrative segregation unit
4. Disciplinary action unit
5. Unit for sick or injured inmates
6. Other 1
7. Other 2
8. Other 3

9. NA
0. Inap., No unit coded

VAR 0128 SECURITY DESIGNATION: T4 MD=0 OR GE 9  
 REF 0128 LOC 366 WIDTH 1 DK 6 COL 24

Q.11b(7)4 Security designation of confinement unit--Type 4  
 -----

1. Maximum
2. Close
3. Medium
4. Minimum
5. Other 1
6. Other 2
7. Other 3
8. Other 4

9. NA
0. Inap., No unit coded

VAR 0129 # OF INMATES: TYPE 4 MD=GE 9999  
 REF 0129 LOC 367 WIDTH 4 DK 6 COL 25-28

Q.11b(8)4 Number of inmates TODAY--Type 4  
 -----

Actual number coded 0 to 1,924

9999. NA

VAR 0130 M/F USE UNIT: TYPE 4 MD=0 OR GE 9  
REF 0130 LOC 371 WIDTH 1 DK 6 COL 29

Q.11b(9)4 Male and/or female use of unit--Type 4

- 1. Male unit
- 2. Female unit
- 3. Both sexes in facility
- 9. NA
- 0. Inap., No unit coded

VAR 0131 RATED CAPACITY: TYPE 5 MD=GE 9999  
REF 0131 LOC 372 WIDTH 4 DK 6 COL 30-33

Q.11b(2)a5 Rated capacity of ONE confinement unit--Type 5

Actual number coded 0 to 172

9999. NA

VAR 0132 NOT RATED: TYPE 5 MD=0  
REF 0132 LOC 376 WIDTH 1 DK 6 COL 34

Q.11b(2)b5 Not Rated--Type 5

- 9. Not Rated, Actual number of beds coded in Q.11b(2)1
- 0. Inap., No unit coded or question not marked

VAR 0133 FLOOR SPACE: TYPE 5 MD=GE 99999  
REF 0133 LOC 377 WIDTH 5 DK 6 COL 35-39

Q.11b(3)5 Floor space of ONE confinement unit--Type 5

(CONTINUED)

Actual square feet coded 0 to 14,280

99999. NA

VAR 0134 NUMBER UNITS: TYPE 5 MD=GE 9999  
REF 0134 LOC 382 WIDTH 4 DK 6 COL 40-43

Q.11b(4)5 Number of confinement units--Type 5

Actual number coded 0 to 747

9999. NA

VAR 0135 # HOURS CONFINED: TYPE 5 MD=GE 99  
REF 0135 LOC 386 WIDTH 2 DK 6 COL 44-45

Q.11b(5)5 Average number of hours per day confined to unit--Type 5

Actual hours coded 0 to 24

99. NA

VAR 0136 CONFINEMENT UNIT USE: TYPE 5 MD=0 OR GE 9  
REF 0136 LOC 388 WIDTH 1 DK 6 COL 46

Q.11b(6)5 Confinement unit use--Type 5

- 1. General housing unit
- 2. Protective custody
- 3. Administrative segregation unit
- 4. Disciplinary action unit

(CONTINUED)

5. Unit for sick or injured inmates
6. Other 1
7. Other 2
8. Other 3

9. NA
0. Inap., No unit coded

VAR 0137 SECURITY DESIGNATION: T5 MD=O OR GE 9  
REF 0137 LOC 389 WIDTH 1 DK 6 COL 47

Q.11b(7)5 Security designation of confinement unit--Type 5

1. Maximum
2. Close
3. Medium
4. Minimum
5. Other 1
6. Other 2
7. Other 3
8. Other 4

9. NA
0. Inap., No unit coded

VAR 0138 # OF INMATES: TYPE 5 MD=GE 9999  
REF 0138 LOC 390 WIDTH 4 DK 6 COL 48-51

Q.11b(8)5 Number of inmates TODAY--Type 5

Actual number coded 0 to 1,762

9999. NA

VAR 0139 M/F USE UNIT: TYPE 5 MD=O OR GE 9  
REF 0139 LOC 394 WIDTH 1 DK 6 COL 52

Q.11b(9)5 Male and/or female use of unit--Type 5

1. Male unit
2. Female unit
3. Both sexes in facility

9. NA
0. Inap., No unit coded

VAR 0140 RATED CAPACITY: TYPE 6 MD=GE 9999  
REF 0140 LOC 395 WIDTH 4 DK 6 COL 53-56

Q.11b(2)a6 Rated capacity of ONE confinement unit--Type 6

Actual number coded 0 to 168

9999. NA

VAR 0141 NOT RATED: TYPE 6 MD=O  
REF 0141 LOC 399 WIDTH 1 DK 6 COL 57

Q.11b(2)b6 Not Rated--Type 6

9. Not Rated, Actual number of beds coded in Q.11b(2)1

0. Inap., No unit coded or question not marked

VAR 0142 FLOOR SPACE: TYPE 6 MD=GE 99999  
REF 0142 LOC 400 WIDTH 5 DK 6 COL 58-62

Q.11b(3)6 Floor space of ONE confinement unit--Type 6

(CONTINUED)

Actual square feet coded 0 to 15,500

9999. NA

VAR 0143      NUMBER UNITS: TYPE 6      MD=GE 9999  
 REF 0143      LOC 405 WIDTH 4      DK 6 COL 63-66

Q.11b(4)6 Number of confinement units--Type 6

Actual number coded 0 to 768

9999. NA

VAR 0144      # HOURS CONFINED: TYPE 6      MD=GE 99  
 REF 0144      LOC 409 WIDTH 2      DK 6 COL 67-68

Q.11b(5)6 Average number of hours per day confined to unit--Type 6

Actual hours coded 0 to 24

99. NA

VAR 0145      CONFINE UNIT USE: TYPE 6      MD=0 OR GE 9  
 REF 0145      LOC 411 WIDTH 1      DK 6 COL 69

Q.11b(6)6 Confinement unit use--Type 6

1. General housing unit
2. Protective custody
3. Administrative segregation unit
4. Disciplinary action unit
5. Unit for sick or injured inmates

(CONTINUED)

6. Other 1
7. Other 2
8. Other 3

9. NA
0. Inap., No unit coded

VAR 0146      SECURITY DESIGNATION: T6      MD=0 OR GE 9  
 REF 0146      LOC 412 WIDTH 1      DK 6 COL 70

Q.11b(7)6 Security designation of confinement unit--Type 6

1. Maximum
2. Close
3. Medium
4. Minimum
5. Other 1
6. Other 2
7. Other 3
8. Other 4

9. NA
0. Inap., No unit coded

VAR 0147      # OF INMATES: TYPE 6      MD=GE 9999  
 REF 0147      LOC 413 WIDTH 4      DK 6 COL 71-74

Q.11b(8)6 Number of inmates TODAY--Type 6

Actual number coded 0 to 958

9999. NA

VAR 0148 M/F USE UNIT: TYPE 6 MD=0 OR GE 9  
 REF 0148 LOC 417 WIDTH 1 DK 6 COL 75

Q.11b(9)6 Male and/or female use of unit--Type 6

1. Male unit
2. Female unit
3. Both sexes in facility
9. NA
0. Inap., No unit coded

VAR 0149 RATED CAPACITY: TYPE 7 MD=GE 9999  
 REF 0149 LOC 418 WIDTH 4 DK 6 COL 76-79

Q.11b(2)a7 Rated capacity of ONE confinement unit--Type 7

Actual number coded 0 to 180

9999. NA

VAR 0150 NOT RATED: TYPE 7 MD=0  
 REF 0150 LOC 422 WIDTH 1 DK 6 COL 80

Q.11b(2)b7 Not Rated--Type 7

9. Not Rated, Actual number of beds coded in Q.11b(2)1
0. Inap., No unit coded or question not marked

DECK IDENTIFICATION NUMBER IS '07' DK 7 COL 1-2

VAR 0001 ICPSR STUDY NUMBER-7852 NO MISSING DATA CODES  
 REF 0001 LOC 1 WIDTH 4 DK 7 COL 3-6

STUDY ID NUMBER

7852. The ICPSR has attached this number as a study identification number.

VAR 0002 ICPSR VERSION NUMBER-1 NO MISSING DATA CODES  
 REF 0002 LOC 5 WIDTH 1 DK 7 COL 7

VERSION NUMBER

1. This is the first version of this study.

VAR 0003 ICPSR PART NUMBER-1 NO MISSING DATA CODES  
 REF 0003 LOC 6 WIDTH 1 DK 7 COL 8

PART NUMBER

1. The entire study is contained in one file.

VAR 0004 SEQUENCE NUMBER NO MISSING DATA CODES  
 REF 0004 LOC 7 WIDTH 3 DK 7 COL 9-11

SEQUENCE NUMBER

The ICPSR has attached a number to every case. This number uniquely identifies each case in this survey.

VAR 0151 FLOOR SPACE: TYPE 7 MD=GE 99999  
 REF 0151 LOC 423 WIDTH 5 DK 7 COL 12-16

Q.11b(3)7 Floor space of ONE confinement unit--Type 7

Actual square feet coded 0 to 27,338

99999. NA

VAR 0152 NUMBER UNITS: TYPE 7 MD=GE 9999  
 REF 0152 LOC 428 WIDTH 4 DK 7 COL 17-20

Q.11b(4)7 Number of confinement units--Type 7

Actual number coded 0 to 640

9999. NA

VAR 0153 # HOURS CONFINED: TYPE 7 MD=GE 99  
 REF 0153 LOC 432 WIDTH 2 DK 7 COL 21-22

Q.11b(5)7 Average number of hours per day confined to unit--Type 7

Actual hours coded 0 to 24

99. NA

VAR 0154 CONFINEMENT UNIT USE: TYPE 7 MD=0 OR GE 9  
 REF 0154 LOC 434 WIDTH 1 DK 7 COL 23

Q.11b(6)7 Confinement unit use--Type 7

(CONTINUED)

1. General housing unit
2. Protective custody
3. Administrative segregation unit
4. Disciplinary action unit
5. Unit for sick or injured inmates
6. Other 1
7. Other 2
8. Other 3

9. NA
0. Inap., No unit coded

VAR 0155 SECURITY DESIGNATION: T7 MD=0 OR GE 9  
 REF 0155 LOC 435 WIDTH 1 DK 7 COL 24

Q.11b(7)7 Security designation of confinement unit--Type 7

1. Maximum
2. Close
3. Medium
4. Minimum
5. Other 1
6. Other 2
7. Other 3
8. Other 4

9. NA
0. Inap., No unit coded

VAR 0156 # OF INMATES: TYPE 7 MD=GE 9999  
 REF 0156 LOC 436 WIDTH 4 DK 7 COL 25-28

Q.11b(8)7 Number of inmates TODAY--Type 7

Actual number coded 0 to 1,096

9999. NA

VAR 0157 M/F USE UNIT: TYPE 7 MD=0 OR GE 9  
REF 0157 LOC 440 WIDTH 1 DK 7 COL 29

Q.11b(9)7 Male and/or female use of unit--Type 7

1. Male unit
2. Female unit
3. Both sexes in facility
9. NA
0. Inap., No unit coded

VAR 0158 RATED CAPACITY: TYPE 8 MD=GE 9999  
REF 0158 LOC 441 WIDTH 4 DK 7 COL 30-33

Q.11b(2)a8 Rated capacity of ONE confinement unit--Type 8

Actual number coded 0 to 233

9999. NA

VAR 0159 NOT RATED: TYPE 8 MD=0  
REF 0159 LOC 445 WIDTH 1 DK 7 COL 34

Q.11b(2)b8 Not Rated--Type 8

9. Not Rated, Actual number of beds coded in Q.11b(2)1
0. Inap., No unit coded or question not marked

VAR 0160 FLOOR SPACE: TYPE 8 MD=GE 99999  
REF 0160 LOC 446 WIDTH 5 DK 7 COL 35-39

Q.11b(3)8 Floor space of ONE confinement unit--Type 8

(CONTINUED)

Actual square feet coded 0 to 25,000

99999. NA

VAR 0161 NUMBER UNITS: TYPE 8 MD=GE 9999  
REF 0161 LOC 451 WIDTH 4 DK 7 COL 40-43

Q.11b(4)8 Number of confinement units--Type 8

Actual number coded 0 to 313

9999. NA

VAR 0162 # HOURS CONFINED: TYPE 8 MD=GE 99  
REF 0162 LOC 455 WIDTH 2 DK 7 COL 44-45

Q.11b(5)8 Average number of hours per day confined to unit--Type 8

Actual hours coded 0 to 24

99. NA

VAR 0163 CONFINEMENT UNIT USE: TYPE 8 MD=0 OR GE 9  
REF 0163 LOC 457 WIDTH 1 DK 7 COL 46

Q.11b(6)8 Confinement unit use--Type 8

1. General housing unit
2. Protective custody
3. Administrative segregation unit
4. Disciplinary action unit
5. Unit for sick or injured inmates

(CONTINUED)

- 6. Other 1
- 7. Other 2
- 8. Other 3
- 9. NA
- 0. Inap., No unit coded

VAR 0164 SECURITY DESIGNATION: T8 MD=O OR GE 9  
 REF 0164 LOC 458 WIDTH 1 DK 7 COL 47

Q.11b(7)8 Security designation of confinement unit--Type 8

- 1. Maximum
- 2. Close
- 3. Medium
- 4. Minimum
- 5. Other 1
- 6. Other 2
- 7. Other 3
- 8. Other 4
- 9. NA
- 0. Inap., No unit coded

VAR 0165 # OF INMATES: TYPE 8 MD=GE 9999  
 REF 0165 LOC 459 WIDTH 4 DK 7 COL 48-51

Q.11b(8)8 Number of inmates TODAY--Type 8

Actual number coded 0 to 358

9999. NA

VAR 0166 M/F USE UNIT: TYPE 8 MD=O OR GE 9  
 REF 0166 LOC 463 WIDTH 1 DK 7 COL 52

Q.11b(9)8 Male and/or female use of unit--Type 8

- 1. Male unit
- 2. Female unit
- 3. Both sexes in facility
- 9. NA
- 0. Inap., No unit coded

VAR 0167 RATED CAPACITY: TYPE 9 MD=GE 9999  
 REF 0167 LOC 464 WIDTH 4 DK 7 COL 53-56

Q.11b(2)a9 Rated capacity of ONE confinement unit--Type 9

Actual number coded 0 to 124

9999. NA

VAR 0168 NOT RATED: TYPE 9 MD=O  
 REF 0168 LOC 468 WIDTH 1 DK 7 COL 57

Q.11b(2)b9 Not Rated--Type 9

- 9. Not Rated, Actual number of beds coded in Q.11b(2)1
- 0. Inap., No unit coded or question not marked

VAR 0169 FLOOR SPACE: TYPE 9 MD=GE 99999  
 REF 0169 LOC 469 WIDTH 5 DK 7 COL 58-62

Q.11b(3)9 Floor space of ONE confinement unit--Type 9



(CONTINUED)

Actual square feet coded 0 to 80,209

99999. NA

.....

VAR 0170	NUMBER UNITS: TYPE 9	MD=GE 9999
REF 0170	LOC 474 WIDTH 4	DK 7 COL 63-66

Q.11b(4)9 Number of confinement units--Type 9

-----

Actual number coded 0 to 475

9999. NA

.....

VAR 0171	# HOURS CONFINED: TYPE 9	MD=GE 99
REF 0171	LOC 478 WIDTH 2	DK 7 COL 67-68

Q.11b(5)9 Average number of hours per day confined to unit--Type 9

-----

Actual hours coded 0 to 24

99. NA

.....

VAR 0172	CONFINEMENT UNIT USE: TYPE 9	MD=0 OR GE 9
REF 0172	LOC 480 WIDTH 1	DK 7 COL 69

Q.11b(6)9 Confinement unit use--Type 9

-----

1. General housing unit
2. Protective custody
3. Administrative segregation unit
4. Disciplinary action unit
5. Unit for sick or injured inmates

(CONTINUED)

6. Other 1
7. Other 2
8. Other 3

9. NA
0. Inap., No unit coded

.....

VAR 0173	SECURITY DESIGNATION: T9	MD=0 OR GE 9
REF 0173	LOC 481 WIDTH 1	DK 7 COL 70

Q.11b(7)9 Security designation of confinement unit--Type 9

-----

1. Maximum
2. Close
3. Medium
4. Minimum
5. Other 1
6. Other 2
7. Other 3
8. Other 4

9. NA
0. Inap., No unit coded

.....

VAR 0174	# OF INMATES: TYPE 9	MD=GE 9999
REF 0174	LOC 482 WIDTH 4	DK 7 COL 71-74

Q.11b(8)9 Number of inmates TODAY--Type 9

-----

Actual number coded 0 to 601

9999. NA

VAR 0175 M/F USE UNIT: TYPE 9 MD=0 OR GE 9  
REF 0175 LOC 486 WIDTH 1 DK 7 COL 75

Q.11b(9) Male and/or female use of unit--Type 9

- 1. Male unit
- 2. Female unit
- 3. Both sexes in facility
- 9. NA
- 0. Inap., No unit coded

VAR 0176 RATED CAPACITY: TYPE 10 MD=GE 9999  
REF 0176 LOC 487 WIDTH 4 DK 7 COL 76-79

Q.11b(2)a10 Rated capacity of ONE confinement unit--Type 10

Actual number coded 0 to 156

9999. NA

VAR 0177 NOT RATED: TYPE 10 MD=0  
REF 0177 LOC 491 WIDTH 1 DK 7 COL 80

Q.11b(2)b10 Not Rated--Type 10

- 9. Not Rated, Actual number of beds coded in Q.11b(2)1
- 0. Inap., No unit coded or question not marked

DECK IDENTIFICATION NUMBER IS '08' DK 8 COL 1-2

VAR 0001 ICPSR STUDY NUMBER-7852 NO MISSING DATA CODES  
REF 0001 LOC 1 WIDTH 4 DK 8 COL 3-6

STUDY ID NUMBER

7852. The ICPSR has attached this number as a study identification number.

VAR 0002 ICPSR VERSION NUMBER-1 NO MISSING DATA CODES  
REF 0002 LOC 5 WIDTH 1 DK 8 COL 7

VERSION NUMBER

- 1. This is the first version of this study.

VAR 0003 ICPSR PART NUMBER-1 NO MISSING DATA CODES  
REF 0003 LOC 6 WIDTH 1 DK 8 COL 8

PART NUMBER

- 1. The entire study is contained in one file.

VAR 0004 SEQUENCE NUMBER NO MISSING DATA CODES  
REF 0004 LOC 7 WIDTH 3 DK 8 COL 9-11

SEQUENCE NUMBER

The ICPSR has attached a number to every case. This number uniquely identifies each case in this survey.

VAR 0178 FLOOR SPACE: TYPE 10 MD=GE 99999  
 REF 0178 LOC 492 WIDTH 5 DK 8 COL 12-16

Q.11b(3) 10 Floor space of ONE confinement unit--Type 10  
 -----

Actual square feet coded 0 to 9,240

99999. NA

VAR 0179 NUMBER UNITS: TYPE 10 MD=GE 9999  
 REF 0179 LOC 497 WIDTH 4 DK 8 COL 17-20

Q.11b(4) 10 Number of confinement units--Type 10  
 -----

Actual number coded 0 to 296

9999. NA

VAR 0180 # HOURS CONFINED: TYPE 10 MD=GE 99  
 REF 0180 LOC 501 WIDTH 2 DK 8 COL 21-22

Q.11b(5) 10 Average number of hours per day confined to  
 unit--Type 10  
 -----

Actual hours coded 0 to 24

99. NA

VAR 0181 CONFINEMENT UNIT USE: TYPE 10 MD=0 OR GE 9  
 REF 0181 LOC 503 WIDTH 1 DK 8 COL 23

Q.11b(6) 10 Confinement unit use--Type 10  
 -----

(CONTINUED)

1. General housing unit
2. Protective custody
3. Administrative segregation unit
4. Disciplinary action unit
5. Unit for sick or injured inmates
6. Other 1
7. Other 2
8. Other 3

9. NA
0. Inap., No unit coded

VAR 0182 SECURITY DESIGNATION: T10 MD=0 OR GE 9  
 REF 0182 LOC 504 WIDTH 1 DK 8 COL 24

Q.11b(7) 10 Security designation of confinement unit--Type  
 10  
 -----

1. Maximum
2. Close
3. Medium
4. Minimum
5. Other 1
6. Other 2
7. Other 3
8. Other 4

9. NA
0. Inap., No unit coded

VAR 0183 # OF INMATES: TYPE 10 MD=GE 9999  
 REF 0183 LOC 505 WIDTH 4 DK 8 COL 25-28

Q.11b(8) 10 Number of inmates TODAY--Type 10  
 -----

Actual number coded 0 to 277

9999. NA

VAR 0184 M/F USE UNIT: TYPE 10 MD=0 OR GE 9  
 REF 0184 LOC 509 WIDTH 1 DK 8 COL 29

Q.11b(9) 10 Male and/or female use of unit--Type 10  
 -----

1. Male unit
2. Female unit
3. Both sexes in facility
9. NA
0. Inap., No unit coded

VAR 0185 RATED CAPACITY: TYPE 11 MD=GE 9999  
 REF 0185 LOC 510 WIDTH 4 DK 8 COL 30-33

Q.11b(2)a11 Rated capacity of ONE confinement unit--Type 11  
 -----

Actual number coded 0 to 270

9999. NA

VAR 0186 NOT RATED: TYPE 11 MD=0  
 REF 0186 LOC 514 WIDTH 1 DK 8 COL 34

Q.11b(2)b11 Not Rated--Type 11  
 -----

9. Not Rated, Actual number of beds coded in Q.11b(2)1
0. Inap., No unit coded or question not marked

VAR 0187 FLOOR SPACE: TYPE 11 MD=GE 99999  
 REF 0187 LOC 515 WIDTH 5 DK 8 COL 35-39

Q.11b(3) 11 Floor space of ONE confinement unit--Type 11  
 -----

Actual square feet coded 0 to 22,098

99999. NA

VAR 0188 NUMBER UNITS: TYPE 11 MD=GE 9999  
 REF 0188 LOC 520 WIDTH 4 DK 8 COL 40-43

Q.11b(4) 11 Number of confinement units--Type 11  
 -----

Actual number coded 0 to 217

9999. NA

VAR 0189 # HOURS CONFINED: TYPE 11 MD=GE 99  
 REF 0189 LOC 524 WIDTH 2 DK 8 COL 44-45

Q.11b(5) 11 Average number of hours per day confined to  
 unit--Type 11  
 -----

Actual hours coded 0 to 24

99. NA

VAR 0190 CONFINEMENT UNIT USE:TYPE 11 MD=0 OR GE 9  
REF 0190 LOC 526 WIDTH 1 DK 8 COL 46

Q.11b(6)11 Confinement unit use--Type 11

- 1. General housing unit
- 2. Protective custody
- 3. Administrative segregation unit
- 4. Disciplinary action unit
- 5. Unit for sick or injured inmates
- 6. Other 1
- 7. Other 2
- 8. Other 3
- 9. NA
- 0. Inap., No unit coded

VAR 0191 SECURITY DESIGNATION:TYPE 11 MD=0 OR GE 9  
REF 0191 LOC 527 WIDTH 1 DK 8 COL 47

Q.11b(7)11 Security designation of confinement unit--Type 11

- 1. Maximum
- 2. Close
- 3. Medium
- 4. Minimum
- 5. Other 1
- 6. Other 2
- 7. Other 3
- 8. Other 4
- 9. NA
- 0. Inap., No unit coded

VAR 0192 # OF INMATES: TYPE 11 MD=GE 9999  
REF 0192 LOC 528 WIDTH 4 DK 8 COL 48-51

Q.11b(8)11 Number of inmates TODAY--Type 11

(CONTINUED)

Actual number coded 0 to 333

9999. NA

VAR 0193 M/F USE UNIT: TYPE 11 MD=0 OR GE 9  
REF 0193 LOC 532 WIDTH 1 DK 8 COL 52

Q.11b(9)11 Male and/or female use of unit--Type 11

- 1. Male unit
- 2. Female unit
- 3. Both sexes in facility
- 9. NA
- 0. Inap., No unit coded

VAR 0194 RATED CAPACITY: TYPE 12 MD=GE 9999  
REF 0194 LOC 533 WIDTH 4 DK 8 COL 53-56

Q.11b(2)a12 Rated capacity of ONE confinement unit--Type 12

Actual number coded 0 to 118

9999. NA

VAR 0195 NOT RATED: TYPE 12 MD=0  
REF 0195 LOC 537 WIDTH 1 DK 8 COL 57

Q.11b(2)b12 Not Rated--Type 12

9. Not Rated, Actual number of beds coded in Q.11b(2)1

(CONTINUED)

0. Inap., No unit coded

.....

VAR 0196 FLOOR SPACE: TYPE 12 MD=GE 99999  
REF 0196 LOC 538 WIDTH 5 DK 8 COL 58-62

Q.11b(3)12 Floor space of ONE confinement unit--Type 12

-----

Actual square feet coded 0 to 10,371

99999. NA

.....

VAR 0197 NUMBER UNITS: TYPE 12 MD=GE 9999  
REF 0197 LOC 543 WIDTH 4 DK 8 COL 63-66

Q.11b(4)12 Number of confinement units--Type 12

-----

Actual number coded 0 to 278

9999. NA

.....

VAR 0198 # HOURS CONFINED:TYPE 12 MD=GE 99  
REF 0198 LOC 547 WIDTH 2 DK 8 COL 67-68

Q.11b(5)12 Average number of hours per day confined to unit--Type 12

-----

Actual hours coded 0 to 24

99. NA

VAR 0199 CONFINEMENT UNIT USE:TYPE 12 MD=O OR GE 9  
REF 0199 LOC 549 WIDTH 1 DK 8 COL 69

Q.11b(6)12 Confinement unit use--Type 12

-----

1. General housing unit
2. Protective custody
3. Administrative segregation unit
4. Disciplinary action unit
5. Unit for sick or injured inmates
6. Other 1
7. Other 2
8. Other 3
9. NA
0. Inap., No unit coded

.....

VAR 0200 SECURITY DESIGNATION:TYPE 12 MD=O OR GE 9  
REF 0200 LOC 550 WIDTH 1 DK 8 COL 70

Q.11b(7)12 Security designation of confinement unit--Type 12

-----

1. Maximum
2. Close
3. Medium
4. Minimum
5. Other 1
6. Other 2
7. Other 3
8. Other 4

9. NA
0. Inap., No unit coded

.....

VAR 0201 # OF INMATES:TYPE 12 MD=GE 9999  
REF 0201 LOC 551 WIDTH 4 DK 8 COL 71-74

Q.11b(8)12 Number of inmates TODAY--Type 12

-----

(CONTINUED)

Actual number coded 0 to 529

9999. NA

VAR 0202 M/F USE UNIT: TYPE 12 MD=0 OR GE 9  
REF 0202 LOC 555 WIDTH 1 DK 8 COL 75

Q.11b(9)12 Male and/or female use of unit--Type 12

- 1. Male unit
- 2. Female unit
- 3. Both sexes in facility
- 9. NA
- 0. Inap., No unit coded

VAR 0203 RATED CAPACITY: TYPE 13 MD=GE 9999  
REF 0203 LOC 556 WIDTH 4 DK 8 COL 76-79

Q.11b(2)a13 Rated capacity of ONE confinement unit--Type 13

Actual number coded 0 to 100

9999. NA

VAR 0204 NOT RATED: TYPE 13 MD=0  
REF 0204 LOC 560 WIDTH 1 DK 8 COL 80

Q.11b(2)b13 Not Rated--Type 13

- 9. Not Rated, Actual number of beds coded in Q.11b(2)1

(CONTINUED)

- 0. Inap., No unit coded

DECK IDENTIFICATION NUMBER IS '09'

DK 9 COL 1- 2

VAR 0001 ICPSR STUDY NUMBER-7852 NO MISSING DATA CODES  
REF 0001 LOC 1 WIDTH 4 DK 9 COL 3- 6

STUDY ID NUMBER

- 7852. The ICPSR has attached this number as a study identification number.

VAR 0002 ICPSR VERSION NUMBER-1 NO MISSING DATA CODES  
REF 0002 LOC 5 WIDTH 1 DK 9 COL 7

VERSION NUMBER

- 1. This is the first version of this study.

VAR 0003 ICPSR PART NUMBER-1 NO MISSING DATA CODES  
REF 0003 LOC 6 WIDTH 1 DK 9 COL 8

PART NUMBER

- 1. The entire study is contained in one file.

VAR 0004 SEQUENCE NUMBER NO MISSING DATA CODES  
REF 0004 LOC 7 WIDTH 3 DK 9 COL 9-11

SEQUENCE NUMBER

(CONTINUED)

The ICPSR has attached a number to every case. This number uniquely identifies each case in this survey.

VAR 0205 FLOOR SPACE: TYPE 13 MD=GE 99999  
REF 0205 LOC 561 WIDTH 5 DK 9 COL 12-16

Q.11b(3)13 Floor space of ONE confinement unit--Type 13

Actual square feet coded 0 to 6,080

99999. NA

VAR 0206 NUMBER UNITS: TYPE 13 MD=GE 9999  
REF 0206 LOC 566 WIDTH 4 DK 9 COL 17-20

Q.11b(4)13 Number of confinement units--Type 13

Actual number coded 0 to 156

9999. NA

VAR 0207 # HOURS CONFINED: TYPE 13 MD=GE 99  
REF 0207 LOC 570 WIDTH 2 DK 9 COL 21-22

Q.11b(5)13 Average number of hours per day confined to unit--Type 13

Actual hours coded 0 to 24

99. NA

VAR 0208 CONFINE UNIT USE: TYPE 13 MD=0 OR GE 9  
REF 0208 LOC 572 WIDTH 1 DK 9 COL 23

Q.11b(6)13 Confinement unit use--Type 13

1. General housing unit
2. Protective custody
3. Administrative segregation unit
4. Disciplinary action unit
5. Unit for sick or injured inmates
6. Other 1
7. Other 2
8. Other 3
9. NA
0. Inap., No unit coded

VAR 0209 SECURITY DESIGNATION: T13 MD=0 OR GE 9  
REF 0209 LOC 573 WIDTH 1 DK 9 COL 24

Q.11b(7)13 Security designation of confinement unit--Type 13

1. Maximum
2. Close
3. Medium
4. Minimum
5. Other 1
6. Other 2
7. Other 3
8. Other 4

9. NA
0. Inap., No unit coded

VAR 0210 # OF INMATES: TYPE 13 MD=GE 9999  
REF 0210 LOC 574 WIDTH 4 DK 9 COL 25-28

Q.11b(8)13 Number of inmates TODAY--Type 13



**CONTINUED**

**1 OF 2**

(CONTINUED)

Actual number coded 0 to 640

9999. NA

VAR 0211 M/F USE UNIT: TYPE 13 MD=0 OR GE 9  
REF 0211 LOC 578 WIDTH 1 DK 9 COL 29

Q.11b(9)13 Male and/or female use of unit--Type 13

- 1. Male unit
- 2. Female unit
- 3. Both sexes in facility

- 9. NA
- 0. Inap., No unit coded

VAR 0212 RATED CAPACITY: TYPE 14 MD=GE 9999  
REF 0212 LOC 579 WIDTH 4 DK 9 COL 30-33

Q.11b(2)a14 Rated capacity of ONE confinement unit--Type 14

Actual number coded 0 to 60

9999. NA

VAR 0213 NOT RATED: TYPE 14 MD=0  
REF 0213 LOC 583 WIDTH 1 DK 9 COL 34

Q.11b(2)b14 Not Rated--Type 14

- 9. Not Rated, Actual number of beds coded in Q.11b(2)1

(CONTINUED)

0. Inap., No unit coded or question not marked

VAR 0214 FLOOR SPACE: TYPE 14 MD=GE 9999  
REF 0214 LOC 584 WIDTH 5 DK 9 COL 35-39

Q.11b(3)14 Floor space of ONE confinement unit--Type 14

Actual square feet coded 0 to 6,277

99999. NA

VAR 0215 NUMBER UNITS: TYPE 14 MD=GE 9999  
REF 0215 LOC 589 WIDTH 4 DK 9 COL 40-43

Q.11b(4)14 Number of confinement units--Type 14

Actual number coded 0 to 120

9999. NA

VAR 0216 # HOURS CONFINED: TYPE 14 MD=GE 99  
REF 0216 LOC 593 WIDTH 2 DK 9 COL 44-45

Q.11b(5)14 Average number of hours per day confined to unit--Type 14

Actual hours coded 0 to 24

99. NA

VAR 0217 CONFINEMENT UNIT USE:TYPE 14 MD=0 OR GE 9  
REF 0217 LOC 595 WIDTH 1 DK 9 COL 46

Q.11b(6)14 Confinement unit use--Type 14

- 1. General housing unit
- 2. Protective custody
- 3. Administrative segregation unit
- 4. Disciplinary action unit
- 5. Unit for sick or injured inmates
- 6. Other 1
- 7. Other 2
- 8. Other 3
- 9. NA
- 0. Inap., No unit coded

VAR 0218 SECURITY DESIGNATION:TYPE 14 MD=0 OR GE 9  
REF 0218 LOC 596 WIDTH 1 DK 9 COL 47

Q.11b(7)14 Security designation of confinement unit--Type 14

- 1. Maximum
- 2. Close
- 3. Medium
- 4. Minimum
- 5. Other 1
- 6. Other 2
- 7. Other 3
- 8. Other 4
- 9. NA
- 0. Inap., No unit coded

VAR 0219 # OF INMATES: TYPE 14 MD=GE 9999  
REF 0219 LOC 597 WIDTH 4 DK 9 COL 48-51

Q.11b(8)14 Number of inmates TODAY--Type 14

(CONTINUED)

Actual number coded 0 to 160

9999. NA

VAR 0220 M/F USE UNIT: TYPE 14 MD=0 OR GE 9  
REF 0220 LOC 601 WIDTH 1 DK 9 COL 52

Q.11b(9)14 Male and/or female use of unit--Type 14

- 1. Male unit
- 2. Female unit
- 3. Both sexes in facility
- 9. NA
- 0. Inap., No unit coded

VAR 0221 RATED CAPACITY: TYPE 15 MD=GE 9999  
REF 0221 LOC 602 WIDTH 4 DK 9 COL 53-56

Q.11b(2)a15 Rated capacity of ONE confinement unit--Type 15

Actual number coded 0 to 62

9999. NA

VAR 0222 NOT RATED: TYPE 15 MD=0  
REF 0222 LOC 606 WIDTH 1 DK 9 COL 57

Q.11b(2)b15 Not Rated--Type 15

9. Not Rated, Actual number of beds coded in Q.11b(2)1

(CONTINUED)

0. Inap., No unit coded or question not marked

VAR 0223 FLOOR SPACE: TYPE 15 MD=GE 9999  
 REF 0223 LOC 607 WIDTH 5 DK 9 COL 58-62

Q.11b(3) 15 Floor space of ONE confinement unit--Type 15

Actual square feet coded 0 to 5,700

99999. NA

VAR 0224 NUMBER UNITS: TYPE 15 MD=GE 9999  
 REF 0224 LOC 612 WIDTH 4 DK 9 COL 63-66

Q.11b(4) 15 Number of confinement units--Type 15

Actual number coded 0 to 128

9999. NA

VAR 0225 # HOURS CONFINED: TYPE 15 MD=GE 99  
 REF 0225 LOC 616 WIDTH 2 DK 9 COL 67-68

Q.11b(5) 15 Average number of hours per day confined to unit--Type 15

Actual hours coded 0 to 24

99. NA

VAR 0226 CONFINE UNIT USE: TYPE 15 MD=0 OR GE 9  
 REF 0226 LOC 618 WIDTH 1 DK 9 COL 69

Q.11b(6) 15 Confinement unit use--Type 15

1. General housing unit
2. Protective custody
3. Administrative segregation unit
4. Disciplinary action unit
5. Unit for sick or injured inmates
6. Other 1
7. Other 2
8. Other 3
9. NA
0. Inap., No unit coded

VAR 0227 SECURITY DESIGNATION: T15 MD=0 OR GE 9  
 REF 0227 LOC 619 WIDTH 1 DK 9 COL 70

Q.11b(7) 15 Security designation of confinement unit--Type 15

1. Maximum
2. Close
3. Medium
4. Minimum
5. Other 1
6. Other 2
7. Other 3
8. Other 4

9. NA
0. Inap., No unit coded

VAR 0228 # OF INMATES: TYPE 15 MD=GE 9999  
 REF 0228 LOC 620 WIDTH 4 DK 9 COL 71-74

Q.11b(8) 15 Number of inmates TODAY--Type 15

(CONTINUED)

Actual number coded 0 to 127

9999. NA

VAR 0229 M/F USE UNIT: TYPE 15 MD=0 OR GE 9  
 REF 0229 LOC 624 WIDTH 1 DK 9 COL 75

Q.11b(9)15 Male and/or female use of unit--Type 15

1. Male unit
2. Female unit
3. Both sexes in facility

9. NA
0. Inap., No unit coded

VAR 0230 RATED CAPACITY: TYPE 16 MD=GE 9999  
 REF 0230 LOC 625 WIDTH 4 DK 9 COL 76-79

Q.11b(2)a16 Rated capacity of ONE confinement unit--Type 16

Actual number coded 0 to 57

9999. NA

VAR 0231 NOT RATED: TYPE 16 MD=0  
 REF 0231 LOC 629 WIDTH 1 DK 9 COL 80

Q.11b(2)b16 Not Rated--Type 16

9. Not Rated, Actual number of beds coded in Q.11b(2)1

(CONTINUED)

0. Inap., No unit coded

DECK IDENTIFICATION NUMBER IS '10'

DK 10 COL 1-2

VAR 0001 ICPSR STUDY NUMBER-7852 NO MISSING DATA CODES  
 REF 0001 LOC 1 WIDTH 4 DK 10 COL 3-6

STUDY ID NUMBER

7852. The ICPSR has attached this number as a study identification number.

VAR 0002 ICPSR VERSION NUMBER-1 NO MISSING DATA CODES  
 REF 0002 LOC 5 WIDTH 1 DK 10 COL 7

VERSION NUMBER

1. This is the first version of this study.

VAR 0003 ICPSR PART NUMBER-1 NO MISSING DATA CODES  
 REF 0003 LOC 6 WIDTH 1 DK 10 COL 8

PART NUMBER

1. The entire study is contained in one file.

VAR 0004 SEQUENCE NUMBER NO MISSING DATA CODES  
 REF 0004 LOC 7 WIDTH 3 DK 10 COL 9-11

SEQUENCE NUMBER

(CONTINUED)

The ICPSR has attached a number to every case. This number uniquely identifies each case in this survey.

VAR 0232 FLOOR SPACE: TYPE 16 MD=GE 99999  
REF 0232 LOC 630 WIDTH 5 DK 10 COL 12-16

Q.11b(3)16 Floor space of ONE confinement unit--Type 16

Actual square feet coded 0 to 4,917

99999. NA

VAR 0233 NUMBER UNITS: TYPE 16 MD=GE 9999  
REF 0233 LOC 635 WIDTH 4 DK 10 COL 17-20

Q.11b(4)16 Number of confinement units--Type 16

Actual number coded 0 to 112

9999. NA

VAR 0234 # HOURS CONFINED:TYPE 16 MD=GE 99  
REF 0234 LOC 639 WIDTH 2 DK 10 COL 21-22

Q.11b(5)16 Average number of hours per day confined to unit--Type 16

Actual hours coded 0 to 24

99. NA

VAR 0235  
REF 0235

CONFINE UNIT USE:TYPE 16  
LOC 641 WIDTH 1

MD=O OR GE 9  
DK 10 COL 23

Q.11b(6)16 Confinement unit use--Type 16

1. General housing unit
2. Protective custody
3. Administrative segregation unit
4. Disciplinary action unit
5. Unit for sick or injured inmates
6. Other 1
7. Other 2
8. Other 3
9. NA
0. Inap., No unit coded

VAR 0236  
REF 0236

SECURITY DESIGNATION:TYPE 16  
LOC 642 WIDTH 1

MD=O OR GE 9  
DK 10 COL 24

Q.11b(7)16 Security designation of confinement unit--Type 16

1. Maximum
2. Close
3. Medium
4. Minimum
5. Other 1
6. Other 2
7. Other 3
8. Other 4

9. NA
0. Inap., No unit coded

VAR 0237  
REF 0237

# OF INMATES: TYPE 16  
LOC 643 WIDTH 4

MD=GE 9999  
DK 10 COL 25-28

Q.11b(8)16 Number of inmates TODAY--Type 16

(CONTINUED)

Actual number coded 0 to 51

9999. NA

VAR 0238 M/F USE UNIT: TYPE 16 MD=0 OR GE 9  
 REF 0238 LOC 647 WIDTH 1 DK 10 COL 29

Q.11b(9)16 Male and/or female use of unit--Type 16

1. Male unit
2. Female unit
3. Both sexes in facility
9. NA
0. Inap., No unit coded

VAR 0239 RATED CAPACITY: TYPE 17 MD=GE 9999  
 REF 0239 LOC 648 WIDTH 4 DK 10 COL 30-33

Q.11b(2)a17 Rated capacity of ONE confinement unit--Type 17

Actual number coded 0 to 90

9999. NA

VAR 0240 NOT RATED: TYPE 17 MD=0  
 REF 0240 LOC 652 WIDTH 1 DK 10 COL 34

Q.11b(2)b17 Not Rated--Type 17

9. Not Rated, Actual number of beds coded in Q.11b(2)1

(CONTINUED)

0. Inap., No unit coded or question not marked

VAR 0241 FLOOR SPACE: TYPE 17 MD=GE 9999  
 REF 0241 LOC 653 WIDTH 5 DK 10 COL 35-39

Q.11b(3)17 Floor space of ONE confinement unit--Type 17

Actual square feet coded 0 to 8,400

9999. NA

VAR 0242 NUMBER UNITS: TYPE 17 MD=GE 9999  
 REF 0242 LOC 658 WIDTH 4 DK 10 COL 40-43

Q.11b(4)17 Number of confinement units--Type 17

Actual number coded 0 to 160

9999. NA

VAR 0243 # HOURS CONFINED: TYPE 17 MD=GE 99  
 REF 0243 LOC 662 WIDTH 2 DK 10 COL 44-45

Q.11b(5)17 Average number of hours per day confined to unit--Type 17

Actual hours coded 0 to 24

99. NA

VAR 0244 CONFINEMENT UNIT USE:TYPE 17 MD=0 OR GE 9  
REF 0244 LOC 664 WIDTH 1 DK 10 COL 46

Q.11b(6) 17 Confinement unit use--Type 17

- 1. General housing unit
- 2. Protective custody
- 3. Administrative segregation unit
- 4. Disciplinary action unit
- 5. Unit for sick or injured inmates
- 6. Other 1
- 7. Other 2
- 8. Other 3
- 9. NA
- 0. Inap., No unit coded

VAR 0245 SECURITY DESIGNATION:TYPE 17 MD=0 OR GE 9  
REF 0245 LOC 665 WIDTH 1 DK 10 COL 47

Q.11b(7) 17 Security designation of confinement unit--Type 17

- 1. Maximum
- 2. Close
- 3. Medium
- 4. Minimum
- 5. Other 1
- 6. Other 2
- 7. Other 3
- 8. Other 4
- 9. NA
- 0. Inap., No unit coded

VAR 0246 # OF INMATES: TYPE 17 MD=GE 9999  
REF 0246 LOC 666 WIDTH 4 DK 10 COL 48-51

Q.11b(8) 17 Number of inmates TODAY--Type 17

(CONTINUED)

Actual number coded 0 to 180

9999. NA

VAR 0247 M/F USE UNIT: TYPE 17 MD=0 OR GE 9  
REF 0247 LOC 670 WIDTH 1 DK 10 COL 52

Q.11b(9) 17 Male and/or female use of unit--Type 17

- 1. Male unit
- 2. Female unit
- 3. Both sexes in facility
- 9. NA
- 0. Inap., No unit coded

VAR 0248 RATED CAPACITY: TYPE 18 MD=GE 9999  
REF 0248 LOC 671 WIDTH 4 DK 10 COL 53-56

Q.11b(2) a18 Rated capacity of ONE confinement unit--Type 18

Actual number coded 0 to 100

9999. NA

VAR 0249 NOT RATED: TYPE 18 MD=0  
REF 0249 LOC 675 WIDTH 1 DK 10 COL 57

Q.11b(2) b18 Not Rated--Type 18

- 9. Not Rated, Actual number of beds coded in Q.11b(2) 1



(CONTINUED)

0. Inap., No unit coded or question not marked

VAR 0250 FLOOR SPACE: TYPE 18 MD=GE 99999  
REF 0250 LOC 676 WIDTH 5 DK 10 COL 58-62

Q.11b(3)18 Floor space of ONE confinement unit--Type 18

Actual square feet coded 0 to 7,200

99999. NA

VAR 0251 NUMBER UNITS: TYPE 18 MD=GE 9999  
REF 0251 LOC 681 WIDTH 4 DK 10 COL 63-66

Q.11b(4)18 Number of confinement units--Type 18

Actual number coded 0 to 304

9999. NA

VAR 0252 # HOURS CONFINED:TYPE 18 MD=GE 99  
REF 0252 LOC 685 WIDTH 2 DK 10 COL 67-68

Q.11b(5)18 Average number of hours per day confined to unit--Type 18

Actual hours coded 0 to 24

99. NA

VAR 0253  
REF 0253

CONFINEMENT UNIT USE:TYPE 18  
LOC 687 WIDTH 1

MD=0 OR GE 9  
DK 10 COL 69

Q.11b(6)18 Confinement unit use--Type 18

- 1. General housing unit
- 2. Protective custody
- 3. Administrative segregation unit
- 4. Disciplinary action unit
- 5. Unit for sick or injured inmates
- 6. Other 1
- 7. Other 2
- 8. Other 3
- 9. NA
- 0. Inap., No unit coded

VAR 0254  
REF 0254

SECURITY DESIGNATION:TYPE 18  
LOC 688 WIDTH 1

MD=0 OR GE 9  
DK 10 COL 70

Q.11b(7)18 Security designation of confinement unit--Type 18

- 1. Maximum
- 2. Close
- 3. Medium
- 4. Minimum
- 5. Other 1
- 6. Other 2
- 7. Other 3
- 8. Other 4
- 9. NA
- 0. Inap., No unit coded

VAR 0255  
REF 0255

# OF INMATES: TYPE 18  
LOC 689 WIDTH 4

MD=GE 9999  
DK 10 COL 71-74

Q.11b(8)18 Number of inmates TODAY--Type 18

(CONTINUED)

Actual number coded 0 to 304

9999. NA

VAR 0256 M/F USE UNIT: TYPE 18 MD=0 OR GE 9  
 REF 0256 LOC 693 WIDTH 1 DK 10 COL 75

Q.11b(9)18 Male and/or female use of unit--Type 18

1. Male unit
2. Female unit
3. Both sexes in facility

9. NA  
 0. Inap., No unit coded

VAR 0257 RATED CAPACITY: TYPE 19 MD=GE 9999  
 REF 0257 LOC 694 WIDTH 4 DK 10 COL 76-79

Q.11b(2)a19 Rated capacity of ONE confinement unit--Type 19

Actual number coded 0 to 10

9999. NA

VAR 0258 NOT RATED: TYPE 19 MD=0  
 REF 0258 LOC 698 WIDTH 1 DK 10 COL 80

Q.11b(2)b19 Not Rated--Type 19

9. Not Rated, Actual number of beds coded in Q.11b(2)1

(CONTINUED)

0. Inap., No unit coded

DECK IDENTIFICATION NUMBER IS '11'

DK 11 COL 1-2

VAR 0001 ICPSR STUDY NUMBER-7852 NO MISSING DATA CODES  
 REF 0001 LOC 1 WIDTH 4 DK 11 COL 3-6

STUDY ID NUMBER

7852. The ICPSR has attached this number as a study identification number.

VAR 0002 ICPSR VERSION NUMBER-1 NO MISSING DATA CODES  
 REF 0002 LOC 5 WIDTH 1 DK 11 COL 7

VERSION NUMBER

1. This is the first version of this study.

VAR 0003 ICPSR PART NUMBER-1 NO MISSING DATA CODES  
 REF 0003 LOC 6 WIDTH 1 DK 11 COL 8

PART NUMBER

1. The entire study is contained in one file.

VAR 0004 SEQUENCE NUMBER NO MISSING DATA CODES  
 REF 0004 LOC 7 WIDTH 3 DK 11 COL 9-11

SEQUENCE NUMBER

(CONTINUED)

The ICPSR has attached a number to every case. This number uniquely identifies each case in this survey.

.....  
 VAR 0259 FLOOR SPACE: TYPE 19 MD=GE 9999  
 REF 0259 LOC 699 WIDTH 5 DK 11 COL 12-16

Q.11b(3) 19 Floor space of ONE confinement unit--Type 19

-----  
 Actual square feet coded 0 to 948

99999. NA

.....  
 VAR 0260 NUMBER UNITS: TYPE 19 MD=GE 9999  
 REF 0260 LOC 704 WIDTH 4 DK 11 COL 17-20

Q.11b(4) 19 Number of confinement units--Type 19

-----  
 Actual number coded 0 to 51

9999. NA

.....  
 VAR 0261 # HOURS CONFINED: TYPE 19 MD=GE 99  
 REF 0261 LOC 708 WIDTH 2 DK 11 COL 21-22

Q.11b(5) 19 Average number of hours per day confined to unit--Type 19

-----  
 Actual hours coded 0 to 24

99. NA

VAR 0262 CONFINE UNIT USE: TYPE 19 MD=0 OR GE 9  
 REF 0262 LOC 710 WIDTH 1 DK 11 COL 23

Q.11b(6) 19 Confinement unit use--Type 19

- 1. General housing unit  
 2. Protective custody  
 3. Administrative segregation unit  
 4. Disciplinary action unit  
 5. Unit for sick or injured inmates  
 6. Other 1  
 7. Other 2  
 8. Other 3  
 9. NA  
 0. Inap., No unit coded

.....  
 VAR 0263 SECURITY DESIGNATION: T19 MD=0 OR GE 9  
 REF 0263 LOC 711 WIDTH 1 DK 11 COL 24

Q.11b(7) 19 Security designation of confinement unit--Type 19

- 1. Maximum  
 2. Close  
 3. Medium  
 4. Minimum  
 5. Other 1  
 6. Other 2  
 7. Other 3  
 8. Other 4  
 9. NA  
 0. Inap., No unit coded

.....  
 VAR 0264 # OF INMATES: TYPE 19 MD=GE 9999  
 REF 0264 LOC 712 WIDTH 4 DK 11 COL 25-28

Q.11b(8) 19 Number of inmates TODAY--Type 19

(CONTINUED)

Actual number coded 0 to 51

9999. NA

VAR 0265 M/F USE UNIT: TYPE 19 MD=0 OR GE 9  
REF 0265 LOC 716 WIDTH 1 DK 11 COL 29

Q.11b(9)19 Male and/or female use of unit--Type 19

- 1. Male unit
- 2. Female unit
- 3. Both sexes in facility
- 9. NA
- 0. Inap., No unit coded

VAR 0266 RATED CAPACITY: TYPE 20 MD=GE 9999  
REF 0266 LOC 717 WIDTH 4 DK 11 COL 30-33

Q.11b(2)a20 Rated capacity of ONE confinement unit--Type 20

Actual number coded 0 to 8

9999. NA

VAR 0267 NOT RATED: TYPE 20 MD=0  
REF 0267 LOC 721 WIDTH 1 DK 11 COL 34

Q.11b(2)b20 Not Rated--Type 20

- 9. Not Rated, Actual number of beds coded in Q.11b(2)1

(CONTINUED)

0. Inap., No unit coded or question not marked

VAR 0268 FLOOR SPACE: TYPE 20 MD=GE 99999  
REF 0268 LOC 722 WIDTH 5 DK 11 COL 35-39

Q.11b(3)20 Floor space of ONE confinement unit--Type 20

Actual square feet coded 0 to 754

99999. NA

VAR 0269 NUMBER UNITS: TYPE 20 MD=GE 9999  
REF 0269 LOC 727 WIDTH 4 DK 11 COL 40-43

Q.11b(4)20 Number of confinement units--Type 20

Actual number coded 0 to 10

9999. NA

VAR 0270 # HOURS CONFINED:TYPE 20 MD=GE 99  
REF 0270 LOC 731 WIDTH 2 DK 11 COL 44-45

Q.11b(5)20 Average number of hours per day confined to unit--Type 20

Actual hours coded 0 to 24

99. NA

VAR 0271 CONFINEMENT UNIT USE:TYPE 20 MD=0 OR GE 9  
REF 0271 LOC 733 WIDTH 1 DK 11 COL 46

Q.11b(6)20 Confinement unit use--Type 20

- 1. General housing unit
- 2. Protective custody
- 3. Administrative segregation unit
- 4. Disciplinary action unit
- 5. Unit for sick or injured inmates
- 6. Other 1
- 7. Other 2
- 8. Other 3

- 9. NA
- 0. Inap., No unit coded

VAR 0272 SECURITY DESIGNATION:T20 MD=0 OR GE 9  
REF 0272 LOC 734 WIDTH 1 DK 11 COL 47

Q.11b(7)20 Security designation of confinement unit--Type 20

- 1. Maximum
- 2. Close
- 3. Medium
- 4. Minimum
- 5. Other 1
- 6. Other 2
- 7. Other 3
- 8. Other 4

- 9. NA
- 0. Inap., No unit coded

VAR 0273 # OF INMATES: TYPE 20 MD=GE 9999  
REF 0273 LOC 735 WIDTH 4 DK 11 COL 48-51

Q.11b(8)20 Number of inmates TODAY--Type 20

(CONTINUED)

Actual number coded 0 to 11

9999. NA

VAR 0274 M/F USE UNIT: TYPE 20 MD=0 OR GE 9  
REF 0274 LOC 739 WIDTH 1 DK 11 COL 52

Q.11b(9)20 Male and/or female use of unit--Type 20

- 1. Male unit
- 2. Female unit
- 3. Both sexes in facility

- 9. NA
- 0. Inap., No unit coded

VAR 0275 TOTAL NUMBER OF INMATES MD=GE 9999  
REF 0275 LOC 740 WIDTH 4 DK 11 COL 53-56

Q.11b(10) Total number of inmates today

Actual number coded 0 to 4,253

9999.

VAR 0276 M/F USE UNIT: TOTAL MD=GE 9  
REF 0276 LOC 744 WIDTH 1 DK 11 COL 57

Q.11b(11) Total male and/or female unit use

- 1. Total number of male units
- 2. Total number of female units
- 3. Total number of units for both sexes

(CONTINUED)

9. NA

VAR 0277 COUNSELING PSYCH: MALE NO MISSING DATA CODES  
REF 0277 LOC 745 WIDTH 4 DK 11 COL 58-61

Q.12 The following concerns programs offered for inmates.  
Please indicate the number of inmates currently  
participating in each type of program listed. (Include  
inmates in programs operated by private and public  
agencies.)

Q.12a(1)1 Counseling-Psychological/Psychiatric--Male

Actual number coded 0 to 2,127

VAR 0278 COUNSELING PSYCH: FEMALE NO MISSING DATA CODES  
REF 0278 LOC 749 WIDTH 3 DK 11 COL 62-64

Q.12a(2)1 Counseling-Psychological/Psychiatric--Female

<See question Q.12 for complete question text.>

Actual number coded 0 to 287

VAR 0279 COUNSELING VETS: MALE NO MISSING DATA CODES  
REF 0279 LOC 752 WIDTH 4 DK 11 COL 65-68

Q.12a(1)2 Counseling-Veteran--Male

<See question Q.12 for complete question text.>

Actual number coded 0 to 521

VAR 0280 COUNSELING VETS: FEMALE NO MISSING DATA CODES  
REF 0280 LOC 756 WIDTH 3 DK 11 COL 69-71

Q.12a(2)2 Counseling-Veteran--Female

<See question Q.12 for complete question text.>

Actual number coded 0 to 84

VAR 0281 COUNSELING AA: MALE NO MISSING DATA CODES  
REF 0281 LOC 759 WIDTH 4 DK 11 COL 72-75

Q.12a(1)3 Counseling-Alcohol addiction--Male

<See question Q.12 for complete question text.>

Actual number coded 0 to 1,115

VAR 0282 COUNSELING AA: FEMALE NO MISSING DATA CODES  
REF 0282 LOC 763 WIDTH 3 DK 11 COL 76-78

Q.12a(2)3 Counseling-Alcohol addiction--Female

<See question Q.12 for complete question text.>

Actual number coded 0 to 179

DECK IDENTIFICATION NUMBER IS '12' DK 12 COL 1-2

VAR 0001 ICPSR STUDY NUMBER-7852 NO MISSING DATA CODES  
REF 0001 LOC 1 WIDTH 4 DK 12 COL 3-6

STUDY ID NUMBER

7852. The ICPSR has attached this number as a study

(CONTINUED)

identification number.

VAR 0002 ICPSR VERSION NUMBER-1 NO MISSING DATA CODES  
REF 0002 LOC 5 WIDTH 1 DK 12 COL 7

VERSION NUMBER

1. This is the first version of this study.

VAR 0003 ICPSR PART NUMBER-1 NO MISSING DATA CODES  
REF 0003 LOC 6 WIDTH 1 DK 12 COL 8

PART NUMBER

1. The entire study is contained in one file.

VAR 0004 SEQUENCE NUMBER NO MISSING DATA CODES  
REF 0004 LOC 7 WIDTH 3 DK 12 COL 9-11

SEQUENCE NUMBER

The ICPSR has attached a number to every case. This number uniquely identifies each case in this survey.

VAR 0283 COUNSELING DRUGS: MALE NO MISSING DATA CODES  
REF 0283 LOC 766 WIDTH 4 DK 12 COL 12-15

Q.12a(1)4 Counseling-Drug dependence--Male

<See question Q.12 for complete question text.>

(CONTINUED)

Actual number coded 0 to 614

VAR 0284 COUNSELING DRUGS: FEMALE NO MISSING DATA CODES  
REF 0284 LOC 770 WIDTH 3 DK 12 COL 16-18

Q.12a(2)4 Counseling-Drug dependence--Female

<See question Q.12 for complete question text.>

Actual number coded 0 to 125

VAR 0285 COUNSELING EMPLOY: MALE NO MISSING DATA CODES  
REF 0285 LOC 773 WIDTH 4 DK 12 COL 19-22

Q.12a(1)5 Counseling-Employment--Male

<See question Q.12 for complete question text.>

Actual number coded 0 to 1,053

VAR 0286 COUNSELING EMPLOY: FEMALE NO MISSING DATA CODES  
REF 0286 LOC 777 WIDTH 3 DK 12 COL 23-25

Q.12a(2)5 Counseling-Employment--Female

<See question Q.12 for complete question text.>

Actual number coded 0 to 216

VAR 0287 COUNSELING OTHER1: MALE NO MISSING DATA CODES  
REF 0287 LOC 780 WIDTH 4 DK 12 COL 26-29

Q.12a(1)6 Counseling-Other 1--Male

(CONTINUED)

&lt;See question Q.12 for complete question text.&gt;

Actual number coded 0 to 1,150  
.....VAR 0288 COUNSELING OTHER1: FEMALE NO MISSING DATA CODES  
REF 0288 LOC 784 WIDTH 3 DK 12 COL 30-32Q.12a(2)6 Counseling-Other 1--Female  
-----Actual number coded 0 to 400  
.....VAR 0289 COUNSELING OTHER2: MALE NO MISSING DATA CODES  
REF 0289 LOC 787 WIDTH 4 DK 12 COL 33-36Q.12a(1)7 Counseling-Other 2--Male  
-----Actual number coded 0 to 740  
.....VAR 0290 COUNSELING OTHER2: FEMALE NO MISSING DATA CODES  
REF 0290 LOC 791 WIDTH 3 DK 12 COL 37-39Q.12a(2)7 Counseling-Other 2--Female  
-----Actual number coded 0 to 60  
.....VAR 0291 COUNSELING OTHER3: MALE NO MISSING DATA CODES  
REF 0291 LOC 794 WIDTH 4 DK 12 COL 40-43Q.12a(1)8 Counseling-Other 3--Male  
-----

&lt;See question Q.12 for complete question text.&gt;

Actual number coded 0 to 712

VAR 0292 COUNSELING OTHER3: FEMALE NO MISSING DATA CODES  
REF 0292 LOC 798 WIDTH 3 DK 12 COL 44-46Q.12a(2)8 Counseling-Other 3--Female  
-----

&lt;See question Q.12 for complete question text.&gt;

Actual number coded 0 to 29  
.....VAR 0293 EDUC BASIC: MALE NO MISSING DATA CODES  
REF 0293 LOC 801 WIDTH 4 DK 12 COL 47-50Q.12b(1)1 Education (exclude inmates enrolled in  
correspondence courses)-Basic adult education--Male  
-----

&lt;See question Q.12 for complete question text.&gt;

Actual number coded 0 to 1,505  
.....VAR 0294 EDUC BASIC: FEMALE NO MISSING DATA CODES  
REF 0294 LOC 805 WIDTH 3 DK 12 COL 51-53Q.12b(2)1 Education (exclude inmates enrolled in  
correspondence courses)-Basic adult education--Female  
-----

&lt;See question Q.12 for complete question text.&gt;

Actual number coded 0 to 242  
.....VAR 0295 EDUC SECONDARY: MALE NO MISSING DATA CODES  
REF 0295 LOC 808 WIDTH 4 DK 12 COL 54-57Q.12b(1)2 Education (exclude inmates enrolled in  
correspondence courses)-Secondary education--Male  
-----

&lt;See question Q.12 for complete question text.&gt;



(CONTINUED)

Actual number coded 0 to 683  
.....

VAR 0296	EDUC SECONDARY: FEMALE	NO MISSING DATA CODES
REF 0296	LOC 812 WIDTH 3	DK 12 COL 58-60

Q.12b(2)2 Education (exclude inmates enrolled in  
correspondence courses)-Secondary education--Female

-----

&lt;See question Q.12 for complete question text.&gt;

Actual number coded 0 to 150  
.....

VAR 0297	EDUC SPECIAL: MALE	NO MISSING DATA CODES
REF 0297	LOC 815 WIDTH 4	DK 12 COL 61-64

Q.12b(1)3 Education (exclude inmates enrolled in  
correspondence courses)-Special education (e.g., programs  
for inmates with learning disabilities)--Male

-----

&lt;See question Q.12 for complete question text.&gt;

Actual number coded 0 to 313  
.....

VAR 0298	EDUC SPECIAL: FEMALE	NO MISSING DATA CODES
REF 0298	LOC 819 WIDTH 3	DK 12 COL 65-67

Q.12b(2)3 Education (exclude inmates enrolled in  
correspondence courses)-Special education (e.g., programs  
for inmates with learning disabilities)--Female

-----

&lt;See question Q.12 for complete question text.&gt;

Actual number coded 0 to 105

VAR 0299	EDUC COLLEGE IN FAC: MA	NO MISSING DATA CODES
REF 0299	LOC 822 WIDTH 4	DK 12 COL 68-71

Q.12b(1)4a Education (exclude inmates enrolled in  
correspondence courses)-College degree/Facility-offered  
college courses--Male

-----

&lt;See question Q.12 for complete question text.&gt;

Actual number coded 0 to 362  
.....

VAR 0300	EDUC COLLEGE IN FAC: FE	NO MISSING DATA CODES
REF 0300	LOC 826 WIDTH 3	DK 12 COL 72-74

Q.12b(2)4a Education (exclude inmates enrolled in  
correspondence courses)-College degree/Facility-offered  
college courses--Female

-----

&lt;See question Q.12 for complete question text.&gt;

Actual number coded 0 to 75  
.....

VAR 0301	EDUC COLLEGE OUT FAC: MA	NO MISSING DATA CODES
REF 0301	LOC 829 WIDTH 4	DK 12 COL 75-78

Q.12b(1)4b Education (exclude inmates enrolled in  
correspondence courses)-College degree/Outside facility  
college courses--Male

-----

&lt;See question Q.12 for complete question text.&gt;

Actual number coded 0 to 232

DECK IDENTIFICATION NUMBER IS '13'

DK 13 COL 1-2

VAR 0001 ICPSR STUDY NUMBER-7852 NO MISSING DATA CODES  
REF 0001 LOC 7 WIDTH 4 DK 13 COL 3-6

STUDY ID NUMBER

7852. The ICPSR has attached this number as a study identification number.

VAR 0002 ICPSR VERSION NUMBER-1 NO MISSING DATA CODES  
REF 0002 LOC 5 WIDTH 1 DK 13 COL 7

VERSION NUMBER

1. This is the first version of this study.

VAR 0003 ICPSR PART NUMBER-1 NO MISSING DATA CODES  
REF 0003 LOC 6 WIDTH 1 DK 13 COL 8

PART NUMBER

1. The entire study is contained in one file.

VAR 0004 SEQUENCE NUMBER NO MISSING DATA CODES  
REF 0004 LOC 7 WIDTH 3 DK 13 COL 9-11

SEQUENCE NUMBER

The ICPSR has attached a number to every case. This number uniquely identifies each case in this survey.

VAR 0302 EDUC COLLEGE OUT FAC: FE NO MISSING DATA CODES  
REF 0302 LOC 833 WIDTH 3 DK 13 COL 12-14

Q.12b(2)4b Education (exclude inmates enrolled in correspondence courses)-College degree/Outside facility college courses--Female

<See question Q.12 for complete question text.>

Actual number coded 0 to 32

VAR 0303 EDUC SOC ADJUST: MALE NO MISSING DATA CODES  
REF 0303 LOC 836 WIDTH 4 DK 13 COL 15-18

Q.12(1)c Education (exclude inmates enrolled in correspondence courses)-Social adjustment (e.g., formal programs which prepare inmates for institutional life, release into community, etc.)--Male

<See question Q.12 for complete question text.>

Actual number coded 0 to 2,636

VAR 0304 EDUC SOC ADJUST: FEMALE NO MISSING DATA CODES  
REF 0304 LOC 840 WIDTH 3 DK 13 COL 19-21

Q.12(2)c Education (exclude inmates enrolled in correspondence courses)-Social adjustment (e.g., formal programs which prepare inmates for institutional life, release into community, etc.)--Female

<See question Q.12 for complete question text.>

Actual number coded 0 to 147

VAR 0305 EDUC VOC/TECH: MALE NO MISSING DATA CODES  
REF 0305 LOC 843 WIDTH 4 DK 13 COL 22-25

Q.12(1)c Education (exclude inmates enrolled in  
correspondence courses)-Vocational/technical training--Male  
-----

<See question Q.12 for complete question text.>

Actual number coded 0 to 765  
.....

VAR 0306 EDUC VOC/TECH: FEMALE NO MISSING DATA CODES  
REF 0306 LOC 847 WIDTH 3 DK 13 COL 26-28

Q.12(2)d Education (exclude inmates enrolled in  
correspondence courses)-Vocational/technical  
training--Female  
-----

<See question Q.12 for complete question text.>

Actual number coded 0 to 147  
.....

VAR 0307 EDUC OTHER 1: MALE NO MISSING DATA CODES  
REF 0307 LOC 850 WIDTH 4 DK 13 COL 29-32

Q.12(1)e1 Education (exclude inmates enrolled in  
correspondence courses)-Other programs 1--Male  
-----

<See question Q.12 for complete question text.>

Actual number coded 0 to 235  
.....

VAR 0308 EDUC OTHER 1: FEMALE NO MISSING DATA CODES  
REF 0308 LOC 854 WIDTH 3 DK 13 COL 33-35

Q.12(2)e1 Education (exclude inmates enrolled in  
correspondence courses)-Other programs 1--Female  
-----

(CONTINUED)

<See question Q.12 for complete question text.>

Actual number coded 0 to 59  
.....

VAR 0309 EDUC OTHER 2: MALE NO MISSING DATA CODES  
REF 0309 LOC 857 WIDTH 4 DK 13 COL 36-39

Q.12(1)e2 Education (exclude inmates enrolled in  
correspondence courses)-Other programs 2--Male  
-----

<See question Q.12 for complete question text.>

Actual number coded 0 to 600  
.....

VAR 0310 EDUC OTHER 2: FEMALE NO MISSING DATA CODES  
REF 0310 LOC 861 WIDTH 3 DK 13 COL 40-42

Q.12(2)e2 Education (exclude inmates enrolled in  
correspondence courses)-Other programs 2--Female  
-----

<See question Q.12 for complete question text.>

Actual number coded 0 to 50  
.....

VAR 0311 # HS DEGREES AWARDED YR NO MISSING DATA CODES  
REF 0311 LOC 864 WIDTH 4 DK 13 COL 43-46

Q.13 Please indicate the number of diplomas or degrees  
awarded to inmates during calendar year 1978 for the  
following:

Q.13a High school or equivalent  
-----

Actual number of diplomas or degrees coded 0 to 800

VAR 0312 # 2YR COLLEGE DEG AWARD NO MISSING DATA CODES  
REF 0312 LOC 868 WIDTH 4 DK 13 COL 47-50

Q.13b 2-year college (Associate degree)  
-----

<See question Q.13 for complete question text.>

Actual number of diplomas or degrees coded 0 to 81  
.....

VAR 0313 # 4YR COLLEGE DEG AWARD NO MISSING DATA CODES  
REF 0313 LOC 872 WIDTH 4 DK 13 COL 51-54

Q.13c 4-year college (BA or BS degree)  
-----

<See question Q.13 for complete question text.>

Actual number of diplomas or degrees coded 0 to 14  
.....

VAR 0314 # GRADUATE DEGREE AWARD NO MISSING DATA CODES  
REF 0314 LOC 876 WIDTH 3 DK 13 COL 55-57

Q.13d Graduate (MA, MS, etc., degree)  
-----

<See question Q.13 for complete question text.>

Actual number of diplomas or degrees coded 0 to 1  
.....

VAR 0315 # OF OTHER DEGREES 1 NO MISSING DATA CODES  
REF 0315 LOC 879 WIDTH 3 DK 13 COL 58-60

Q.13(1)e Other diplomas or degree(s) 1  
-----

<See question Q.13 for complete question text.>

Actual number of diplomas or degrees coded 0 to 654  
.....

VAR 0316 # OF OTHER DEGREES 2 NO MISSING DATA CODES  
REF 0316 LOC 882 WIDTH 3 DK 13 COL 61-63

Q.13(2)e Other diplomas or degree(s) 2  
-----

<See question Q.13 for complete question text.>

Actual number of diplomas or degrees coded 0 to 506  
.....

VAR 0317 # OF OTHER DEGREES 3 NO MISSING DATA CODES  
REF 0317 LOC 885 WIDTH 3 DK 13 COL 64-66

Q.13(3)e Other diplomas or degree(s) 3  
-----

<See question Q.13 for complete question text.>

Actual number of diplomas or degrees coded 0 to 150  
.....

VAR 0318 # OF OTHER DEGREES 4 NO MISSING DATA CODES  
REF 0318 LOC 888 WIDTH 3 DK 13 COL 67-69

Q.13(4)e Other diplomas or degree(s) 4  
-----

<See question Q.13 for complete question text.>

Actual number of diplomas or degrees coded 0 to 164  
.....

VAR 0319 TOTAL # PAID STAFF: F-TI NO MISSING DATA CODES  
REF 0319 LOC 891 WIDTH 4 DK 13 COL 70-73

EMPLOYMENT

Q.14 Count each staff member only once - in the position that person primarily fills.

Payroll staff - Full-time and part-time staff on the payroll of this facility.

(CONTINUED)

Nonpayroll staff - Full-time and part-time staff who are NOT on the payroll of this facility. Include personnel of a parent agency or other agency who are assigned for some or all of their working time to this facility; also include personnel paid under contractual agreements or Federal grants, and college interns who receive class credit for their work at the facility. (Exclude community volunteers.)

Q.14(1)a TOTAL number of staff assigned to facility on November 14, 1979--Payroll staff/Full-time

Actual number coded 0 to 1,485

VAR 0320 TOTAL # PAID STAFF: P-TI NO MISSING DATA CODES  
REF 0320 LOC 895 WIDTH 3 DK 13 COL 74-76

Q.14(2)a TOTAL number of staff assigned to facility on November 14, 1979--Payroll staff/Part-time

<See question Q.14 for complete question text.>

Actual number coded 0 to 56

VAR 0321 TOT # NONPAID STAFF:F-TI NO MISSING DATA CODES  
REF 0321 LOC 898 WIDTH 3 DK 13 COL 77-79

Q.14(3)a TOTAL number of staff assigned to facility on November 14, 1979--Nonpayroll staff/Full-time

<See question Q.14 for complete question text.>

Actual number coded 0 to 73

DECK IDENTIFICATION NUMBER IS '14'

DK 14 COL 1-2

VAR 0001 ICPSR STUDY NUMBER-7852 NO MISSING DATA CODES  
REF 0001 LOC 1 WIDTH 4 DK 14 COL 3-6

STUDY ID NUMBER

7852. The ICPSR has attached this number as a study identification number.

VAR 0002 ICPSR VERSION NUMBER-1 NO MISSING DATA CODES  
REF 0002 LOC 5 WIDTH 1 DK 14 COL 7

VERSION NUMBER

1. This is the first version of this study.

VAR 0003 ICPSR PART NUMBER-1 NO MISSING DATA CODES  
REF 0003 LOC 6 WIDTH 1 DK 14 COL 8

PART NUMBER

1. The entire study is contained in one file.

VAR 0004 SEQUENCE NUMBER NO MISSING DATA CODES  
REF 0004 LOC 7 WIDTH 3 DK 14 COL 9-11

SEQUENCE NUMBER

The ICPSR has attached a number to every case. This number uniquely identifies each case in this survey.

VAR 0322 TOT # NONPAID STAFF:P-TI NO MISSING DATA CODES  
REF 0322 LOC 901 WIDTH 3 DK 14 COL 12-14

Q.14(4)a TOTAL number of staff assigned to facility on  
November 14, 1979--Nonpayroll staff/Part-time

<See question Q.14 for complete question text.>

Actual number coded 0 to 65

VAR 0323 # PAID ADMIN STAFF:F-TME NO MISSING DATA CODES  
REF 0323 LOC 904 WIDTH 3 DK 14 COL 15-17

Q.14(1)b Administrative staff - Wardens, superintendents,  
directors, administrators and their assistants, business  
managers, classification officers, etc.--Payroll  
staff/Full-time

<See question Q.14 for complete question text.>

Actual number coded 0 to 66

VAR 0324 # PAID ADMIN STAFF:P-TME NO MISSING DATA CODES  
REF 0324 LOC 907 WIDTH 2 DK 14 COL 18-19

Q.14(2)b Administrative staff - Wardens, superintendents,  
directors, administrators and their assistants, business  
managers, classification officers, etc.--Payroll  
staff/Part-time

<See question Q.14 for complete question text.>

Actual number coded 0 to 2

VAR 0325 # UNPAID ADMIN STAFF:F-T NO MISSING DATA CODES  
REF 0325 LOC 909 WIDTH 2 DK 14 COL 20-21

Q.14(3)b Administrative staff - Wardens, superintendents,  
directors, administrators and their assistants, business  
managers, classification officers, etc.--Nonpayroll  
staff/Full-time

<See question Q.14 for complete question text.>

Actual number coded 0 to 9

VAR 0326 # UNPAID ADMIN STAFF:P-T NO MISSING DATA CODES  
REF 0326 LOC 911 WIDTH 2 DK 14 COL 22-23

Q.14(4)b Administrative staff - Wardens, superintendents,  
directors, administrators and their assistants, business  
managers, classification officers, etc.--Nonpayroll  
staff/Part-time

<See question Q.14 for complete question text.>

Actual number coded 0 to 2

VAR 0327 # PAID CLERIC STAFF:F-TI NO MISSING DATA CODES  
REF 0327 LOC 913 WIDTH 3 DK 14 COL 24-26

Q.14(1)c Clerical support staff - Secretaries, typists,  
clerks, stenographers, bookkeepers, switchboard operators,  
etc.--Payroll staff/Full-time

<See question Q.14 for complete question text.>

Actual number coded 0 to 124

VAR 0328 # PAID CLERIC STAFF:P-TI NO MISSING DATA CODES  
REF 0328 LOC 916 WIDTH 3 DK 14 COL 27-29

Q.14(2)c Clerical support staff - Secretaries, typists, clerks, stenographers, bookkeepers, switchboard operators, etc.--Payroll staff/Part-time

<See question Q.14 for complete question text.>

Actual number coded 0 to 6

VAR 0329 # UNPD CLERIC STAFF:F-TI NO MISSING DATA CODES  
REF 0329 LOC 919 WIDTH 2 DK 14 COL 30-31

Q.14(3)c Clerical support staff - Secretaries, typists, clerks, stenographers, bookkeepers, switchboard operators, etc.--Nonpayroll staff/Full-time

<See question Q.14 for complete question text.>

Actual number coded 0 to 17

VAR 0330 # UNPD CLERIC STAFF:P-TI NO MISSING DATA CODES  
REF 0330 LOC 921 WIDTH 2 DK 14 COL 32-33

Q.14(4)c Clerical support staff - Secretaries, typists, clerks, stenographers, bookkeepers, switchboard operators, etc.--Nonpayroll staff/Part-time

<See question Q.14 for complete question text.>

Actual number coded 0 to 8

VAR 0331 # PAID SUPV STAFF: F-TME NO MISSING DATA CODES  
REF 0331 LOC 923 WIDTH 4 DK 14 COL 34-37

Q.14(1)d Supervision staff - Guards, correctional officers,

(CONTINUED)

etc.--Payroll staff/Full-time

<See question Q.14 for complete question text.>

Actual number coded 0 to 1,234

VAR 0332 # PAID SUPV STAFF: P-TME NO MISSING DATA CODES  
REF 0332 LOC 927 WIDTH 3 DK 14 COL 38-40

Q.14(2)d Supervision staff - Guards, correctional officers, etc.--Payroll staff/Part-time

<See question Q.14 for complete question text.>

Actual number coded 0 to 38

VAR 0333 # UNPD SUPV STAFF: F-TME NO MISSING DATA CODES  
REF 0333 LOC 930 WIDTH 2 DK 14 COL 41-42

Q.14(3)d Supervision staff - Guards, correctional officers, etc.--Nonpayroll staff/Full-time

<See question Q.14 for complete question text.>

Actual number coded 0 to 26

VAR 0334 # UNPD SUPV STAFF: P-TME NO MISSING DATA CODES  
REF 0334 LOC 932 WIDTH 2 DK 14 COL 43-44

Q.14(4)d Supervision staff - Guards, correctional officers, etc.--Nonpayroll staff/Part-time

<See question Q.14 for complete question text.>

Actual number coded 0 to 2

VAR 0335 # PD PSYCHOLOGIST: F-TME NO MISSING DATA CODES  
REF 0335 LOC 934 WIDTH 3 DK 14 COL 45-47

Q.14(1)e Psychologists--Payroll staff/Full-time  
-----

<See question Q.14 for complete question text.>

Actual number coded 0 to 16  
.....

VAR 0336 # PD PSYCHOLOGIST: P-TME NO MISSING DATA CODES  
REF 0336 LOC 937 WIDTH 2 DK 14 COL 48-49

Q.14(2)e Psychologists--Payroll staff/Part-time  
-----

<See question Q.14 for complete question text.>

Actual number coded 0 to 4  
.....

VAR 0337 # UNPD PSYCHOLOGIST: F-T NO MISSING DATA CODES  
REF 0337 LOC 939 WIDTH 2 DK 14 COL 50-51

Q.14(3)e Psychologists--Nonpayroll staff/Full-time  
-----

<See question Q.14 for complete question text.>

Actual number coded 0 to 4  
.....

VAR 0338 # UNPD PSYCHOLOGIST: P-T NO MISSING DATA CODES  
REF 0338 LOC 941 WIDTH 2 DK 14 COL 52-53

Q.14(4)e Psychologists--Nonpayroll staff/Part-time  
-----

<See question Q.14 for complete question text.>

Actual number coded 0 to 6

VAR 0339 # PD PSYCHIATRIST: F-TME NO MISSING DATA CODES  
REF 0339 LOC 943 WIDTH 3 DK 14 COL 54-56

Q.14(1)f Psychiatrists--Payroll staff/Full-time  
-----

<See question Q.14 for complete question text.>

Actual number coded 0 to 10  
.....

VAR 0340 # PD PSYCHIATRIST: P-TME NO MISSING DATA CODES  
REF 0340 LOC 946 WIDTH 2 DK 14 COL 57-58

Q.14(2)f Psychiatrists--Payroll staff/Part-time  
-----

<See question Q.14 for complete question text.>

Actual number coded 0 to 10  
.....

VAR 0341 # UNPD PSYCHIATRIST: F-T NO MISSING DATA CODES  
REF 0341 LOC 948 WIDTH 2 DK 14 COL 59-60

Q.14(3)f Psychiatrists--Nonpayroll staff/Full-time  
-----

<See question Q.14 for complete question text.>

Actual number coded 0 to 2  
.....

VAR 0342 # UNPD PSYCHIATRIST: P-T NO MISSING DATA CODES  
REF 0342 LOC 950 WIDTH 2 DK 14 COL 61-62

Q.14(4)f Psychiatrists--Nonpayroll staff/Part-time  
-----

<See question Q.14 for complete question text.>

Actual number coded 0 to 5



VAR 0343 # PAID DENTIST: F-TIME NO MISSING DATA CODES  
REF 0343 LOC 952 WIDTH 2 DK 14 COL 63-64

Q.14(1)g Dentists--Payroll staff/Full-time

<See question Q.14 for complete question text.>

Actual number coded 0 to 8

VAR 0344 # PAID DENTIST: P-TIME NO MISSING DATA CODES  
REF 0344 LOC 954 WIDTH 2 DK 14 COL 65-66

Q.14(2)g Dentists--Payroll staff/Part-time

<See question Q.14 for complete question text.>

Actual number coded 0 to 6

VAR 0345 # UNPAID DENTIST: F-TIME NO MISSING DATA CODES  
REF 0345 LOC 956 WIDTH 2 DK 14 COL 67-68

Q.14(3)g Dentists--Nonpayroll staff/Full-time

<See question Q.14 for complete question text.>

Actual number coded 0 to 2

VAR 0346 # UNPAID DENTIST: P-TIME NO MISSING DATA CODES  
REF 0346 LOC 958 WIDTH 2 DK 14 COL 69-70

Q.14(4)g Dentists--Nonpayroll staff/Part-time

<See question Q.14 for complete question text.>

Actual number coded 0 to 3

VAR 0347 # PAID MED DOC: F-TIME NO MISSING DATA CODES  
REF 0347 LOC 960 WIDTH 2 DK 14 COL 71-72

Q.14(1)i Other medical doctors-- Payroll staff/Full-time

<See question Q.14 for complete question text.>

Actual number coded 0 to 43

VAR 0348 # PAID MED DOC: P-TIME NO MISSING DATA CODES  
REF 0348 LOC 962 WIDTH 2 DK 14 COL 73-74

Q.14(2)i Other medical doctors--Payroll staff/Part-time

<See question Q.14 for complete question text.>

Actual number coded 0 to 15

VAR 0349 # UNPD MED DOC: F-TIME NO MISSING DATA CODES  
REF 0349 LOC 964 WIDTH 2 DK 14 COL 75-76

Q.14(3)i Other medical doctors--Nonpayroll staff/Full-time

<See question Q.14 for complete question text.>

Actual number coded 0 to 15

VAR 0350 # UNPD MED DOC: P-TIME NO MISSING DATA CODES  
REF 0350 LOC 966 WIDTH 2 DK 14 COL 77-78

Q.14(4)i Other medical doctors--Nonpayroll staff/Part-time

<See question Q.14 for complete question text.>

Actual number coded 0 to 22

DECK IDENTIFICATION NUMBER IS '15'

DK 15 COL 1-2

VAR 0001 ICPSR STUDY NUMBER-7852 NO MISSING DATA CODES  
REF 0001 LOC 1 WIDTH 4 DK 15 COL 3-6

STUDY ID NUMBER

7852. The ICPSR has attached this number as a study identification number.

VAR 0002 ICPSR VERSION NUMBER-1 NO MISSING DATA CODES  
REF 0002 LOC 5 WIDTH 1 DK 15 COL 7

VERSION NUMBER

1. This is the first version of this study.

VAR 0003 ICPSR PART NUMBER-1 NO MISSING DATA CODES  
REF 0003 LOC 6 WIDTH 1 DK 15 COL 8

PART NUMBER

1. The entire study is contained in one file.

VAR 0004 SEQUENCE NUMBER NO MISSING DATA CODES  
REF 0004 LOC 7 WIDTH 3 DK 15 COL 9-11

SEQUENCE NUMBER

The ICPSR has attached a number to every case. This number uniquely identifies each case in this survey.

VAR 0351 # PAID MED PERS: F-TIME NO MISSING DATA CODES  
REF 0351 LOC 968 WIDTH 3 DK 15 COL 12-14

Q.14(1)i Other medical personnel - Physical therapists, aides, technicians, nurses, etc.--Payroll staff/Full-time

<See question Q.14 for complete question text.>

Actual number coded 0 to 134

VAR 0352 # PAID MED PERS: P-TIME NO MISSING DATA CODES  
REF 0352 LOC 971 WIDTH 3 DK 15 COL 15-17

Q.14(2)i Other medical personnel - Physical therapists, aides, technicians, nurses, etc.--Payroll staff/Part-time

<See question Q.14 for complete question text.>

Actual number coded 0 to 13

VAR 0353 # UNPD MED PERS: F-TIME NO MISSING DATA CODES  
REF 0353 LOC 974 WIDTH 2 DK 15 COL 18-19

Q.14(3)i Other medical personnel - Physical therapists, aides, technicians, nurses, etc.--Nonpayroll staff/Full-time

<See question Q.14 for complete question text.>

Actual number coded 0 to 14

VAR 0354 # UNPD MED PERS: P-TIME NO MISSING DATA CODES  
REF 0354 LOC 976 WIDTH 2 DK 15 COL 20-21

Q.14(4)i Other medical personnel - Physical therapists, aides, technicians, nurses, etc.--Nonpayroll staff/Part-time

(CONTINUED)

&lt;See question Q.14 for complete question text.&gt;

Actual number coded 0 to 20

VAR 0355 # PD EDUC STAFF: F-TIME NO MISSING DATA CODES  
REF 0355 LOC 978 WIDTH 3 DK 15 COL 22-24

Q.14(1)j Treatment and educational staff -- Personnel who provide professional services, such as educational and vocational counselors, teachers, probation/parole officers, social workers, caseworkers, etc.--Payroll staff/Full-time

&lt;See question Q.14 for complete question text.&gt;

Actual number coded 0 to 166

VAR 0356 # PD EDUC STAFF: P-TIME NO MISSING DATA CODES  
REF 0356 LOC 981 WIDTH 3 DK 15 COL 25-27

Q.14(2)j Treatment and educational staff -- Personnel who provide professional services, such as educational and vocational counselors, teachers, probation/parole officers, social workers, caseworkers, etc.--Payroll staff/Part-time

&lt;See question Q.14 for complete question text.&gt;

Actual number coded 0 to 19

VAR 0357 # UNPD EDCU STAFF: F-TIME NO MISSING DATA CODES  
REF 0357 LOC 984 WIDTH 3 DK 15 COL 28-30

Q.14(3)j Treatment and educational staff -- Personnel who provide professional services, such as educational and vocational counselors, teachers, probation/parole officers, social workers, caseworkers, etc.--Nonpayroll staff/Full-time

&lt;See question Q.14 for complete question text.&gt;

(CONTINUED)

Actual number coded 0 to 36

VAR 0358 # UNPD EDUC STAFF: P-TIME NO MISSING DATA CODES  
REF 0358 LOC 987 WIDTH 3 DK 15 COL 31-33

Q.14(4)j Treatment and educational staff -- Personnel who provide professional services, such as educational and vocational counselors, teachers, probation/parole officers, social workers, caseworkers, etc.--Nonpayroll staff/Part-time

&lt;See question Q.14 for complete question text.&gt;

Actual number coded 0 to 64

VAR 0359 # PD MAINT STAFF: F-TIME NO MISSING DATA CODES  
REF 0359 LOC 990 WIDTH 3 DK 15 COL 34-36

Q.14(1)k Maintenance and culinary staff - Grounds keepers, gardeners, plumbers, electricians, cooks, etc.--Payroll staff/Full-time

&lt;See question Q.14 for complete question text.&gt;

Actual number coded 0 to 128

VAR 0360 # PD MAINT STAFF: P-TIME NO MISSING DATA CODES  
REF 0360 LOC 993 WIDTH 3 DK 15 COL 37-39

Q.14(2)k Maintenance and culinary staff - Grounds keepers, gardeners, plumbers, electricians, cooks, etc.--Payroll staff/Part-time

&lt;See question Q.14 for complete question text.&gt;

Actual number coded 0 to 5

VAR 0361 # UNPD MAINT STAFF: F-TI NO MISSING DATA CODES  
REF 0361 LOC 996 WIDTH 2 DK 15 COL 40-41

Q.14(3)k Maintenance and culinary staff - Grounds keepers,  
gardeners, plumbers, electricians, cooks, etc.--Nonpayroll  
staff/Full-time

<See question Q.14 for complete question text.>

Actual number coded 0 to 26

VAR 0362 # UNPD MAINT STAFF: P-TI NO MISSING DATA CODES  
REF 0362 LOC 998 WIDTH 2 DK 15 COL 42-43

Q.14(4)k Maintenance and culinary staff - Grounds keepers,  
gardeners, plumbers, electricians, cooks, etc.--Nonpayroll  
staff/Part-time

<See question Q.14 for complete question text.>

Actual number coded 0 to 8

VAR 0363 # PD OTHER STAFF: F-TIME NO MISSING DATA CODES  
REF 0363 LOC 1000 WIDTH 3 DK 15 COL 44-46

Q14(1)1 Other--Payroll staff/Full-time

<See question Q.14 for complete question text.>

Actual number coded 0 to 67

VAR 0364 # PD OTHER STAFF: P-TIME NO MISSING DATA CODES  
REF 0364 LOC 1003 WIDTH 2 DK 15 COL 47-48

Q14(2)1 Other--Payroll staff/Part-time

(CONTINUED)

<See question Q.14 for complete question text.>

Actual number coded 0 to 4

VAR 0365 # UNPD OTHER STAFF: F-TI NO MISSING DATA CODES  
REF 0365 LOC 1005 WIDTH 2 DK 15 COL 49-50

Q14(3)1 Other--Nonpayroll staff/Full-time

<See question Q.14 for complete question text.>

Actual number coded 0 to 9

VAR 0366 # UNPD OTHER STAFF: P-TI NO MISSING DATA CODES  
REF 0366 LOC 1007 WIDTH 2 DK 15 COL 51-52

Q14(4)1 Other--Nonpayroll staff/Part-time

<See question Q.14 for complete question text.>

Actual number coded 0 to 2

VAR 0367 TOT PD STAFF BY RACE:F-T NO MISSING DATA CODES  
REF 0367 LOC 1009 WIDTH 4 DK 15 COL 53-56

Q.15 What was the TOTAL number of staff, BY RACE, on  
November 14, 1979?

Q.15(1)a TOTAL number of staff--Payroll staff/Full-time

Actual number coded 0 to 1,485

VAR 0368 TOT PD STAFF BY RACE:P-T NO MISSING DATA CODES  
REF 0368 LOC 1013 WIDTH 3 DK 15 COL 57-59

Q.15(2)a TOTAL number of staff--Payroll staff/Part-time

<See question Q.15 for complete question text.>

Actual number coded 0 to 56

VAR 0369 TOT UNPD STAFF B RAC:F-T NO MISSING DATA CODES  
REF 0369 LOC 1016 WIDTH 3 DK 15 COL 60-62

Q.15(3)a TOTAL number of staff--Nonpayroll staff/Full-time

<See question Q.15 for complete question text.>

Actual number coded 0 to 73

VAR 0370 TOT UNPD STAFF B RAC:P-T NO MISSING DATA CODES  
REF 0370 LOC 1019 WIDTH 3 DK 15 COL 63-65

Q.15(4)a TOTAL number of staff--Nonpayroll staff/Part-time

<See question Q.15 for complete question text.>

Actual number coded 0 to 65

VAR 0371 # PD WHITE STAFF: F-TIME NO MISSING DATA CODES  
REF 0371 LOC 1022 WIDTH 4 DK 15 COL 66-69

Q.15(1)b White, not of Hispanic origin--Payroll  
staff/Full-time

<See question Q.15 for complete question text.>

Actual number coded 0 to 1,263

VAR 0372 # PD WHITE STAFF: P-TIME NO MISSING DATA CODES  
REF 0372 LOC 1026 WIDTH 3 DK 15 COL 70-72

Q.15(2)b White, not of Hispanic origin--Payroll  
staff/Part-time

<See question Q.15 for complete question text.>

Actual number coded 0 to 32

VAR 0373 # UNPD WHITE STAFF: F-TI NO MISSING DATA CODES  
REF 0373 LOC 1029 WIDTH 3 DK 15 COL 73-75

Q.15(3)b White, not of Hispanic origin--Nonpayroll  
staff/Full-time

<See question Q.15 for complete question text.>

Actual number coded 0 to 73

VAR 0374 # UNPD WHITE STAFF: P-TI NO MISSING DATA CODES  
REF 0374 LOC 1032 WIDTH 3 DK 15 COL 76-78

Q.15(4)b White, not of Hispanic origin--Nonpayroll  
staff/Part-time

<See question Q.15 for complete question text.>

Actual number coded 0 to 60

DECK IDENTIFICATION NUMBER IS '16' DK 16 COL 1- 2

VAR 0001 ICPSR STUDY NUMBER-7852 NO MISSING DATA CODES  
REF 0001 LOC 1 WIDTH 4 DK 16 COL 3- 6

STUDY ID NUMBER

(CONTINUED)

7852. The ICPSR has attached this number as a study identification number.

VAR 0002 ICPSR VERSION NUMBER-1 NO MISSING DATA CODES  
REF 0002 LOC 5 WIDTH 1 DK 16 COL 7

VERSION NUMBER  
-----

1. This is the first version of this study.

VAR 0003 ICPSR PART NUMBER-1 NO MISSING DATA CODES  
REF 0003 LOC 6 WIDTH 1 DK 16 COL 8

PART NUMBER  
-----

1. The entire study is contained in one file.

VAR 0004 SEQUENCE NUMBER NO MISSING DATA CODES  
REF 0004 LOC 7 WIDTH 3 DK 16 COL 9-11

SEQUENCE NUMBER  
-----

The ICPSR has attached a number to every case. This number uniquely identifies each case in this survey.

VAR 0375 # PD BLACK STAFF: F-TIME NO MISSING DATA CODES  
REF 0375 LOC 1035 WIDTH 4 DK 16 COL 12-15

Q.15(1)c Black, not of Hispanic origin--Payroll  
staff/Full-time  
-----

(CONTINUED)

<See question Q.15 for complete question text.>

Actual number coded 0 to 405  
-----

VAR 0376 # PD BLACK STAFF: P-TIME NO MISSING DATA CODES  
REF 0376 LOC 1039 WIDTH 3 DK 16 COL 16-18

Q.15(2)c Black, not of Hispanic origin--Payroll  
staff/Part-time  
-----

<See question Q.15 for complete question text.>

Actual number coded 0 to 29  
-----

VAR 0377 # UNPD BLACK STAFF: F-TI NO MISSING DATA CODES  
REF 0377 LOC 1042 WIDTH 3 DK 16 COL 19-21

Q.15(3)c Black, not of Hispanic origin--Nonpayroll  
staff/Full-time  
-----

<See question Q.15 for complete question text.>

Actual number coded 0 to 10  
-----

VAR 0378 # UNPD BLACK STAFF: P-TI NO MISSING DATA CODES  
REF 0378 LOC 1045 WIDTH 3 DK 16 COL 22-24

Q.15(4)c Black, not of Hispanic origin--Nonpayroll  
staff/Part-time  
-----

<See question Q.15 for complete question text.>

Actual number coded 0 to 5

VAR 0379 # PD HISPAN STAFF: F-TME NO MISSING DATA CODES  
REF 0379 LOC 1048 WIDTH 4 DK 16 COL 25-28

Q.15(1)d Hispanic origin (Persons of Mexican, Puerto Rican, Cuban, Central or South American, or other Spanish culture or origin, excluding Brazil, Jamaica, and Haiti)--Payroll staff/Full-time

<See question Q.15 for complete question text.>

Actual number coded 0 to 213

VAR 0380 # PD HISPAN STAFF: P-TME NO MISSING DATA CODES  
REF 0380 LOC 1052 WIDTH 3 DK 16 COL 29-31

Q.15(2)d Hispanic origin (Persons of Mexican, Puerto Rican, Cuban, Central or South American, or other Spanish culture or origin, excluding Brazil, Jamaica, and Haiti)--Payroll staff/Part-time

<See question Q.15 for complete question text.>

Actual number coded 0 to 11

VAR 0381 # UNPD HISPAN STAFF: F-T NO MISSING DATA CODES  
REF 0381 LOC 1055 WIDTH 3 DK 16 COL 32-34

Q.15(3)d Hispanic origin (Persons of Mexican, Puerto Rican, Cuban, Central or South American, or other Spanish culture or origin, excluding Brazil, Jamaica, and Haiti)--Nonpayroll staff/Full-time

<See question Q.15 for complete question text.>

Actual number coded 0 to 2

VAR 0382 # UNPD HISPAN STAFF: P-T NO MISSING DATA CODES  
REF 0382 LOC 1058 WIDTH 3 DK 16 COL 35-37

Q.15(4)d Hispanic origin (Persons of Mexican, Puerto Rican, Cuban, Central or South American, or other Spanish culture or origin, excluding Brazil, Jamaica, and Haiti)--Nonpayroll staff/Part-time

<See question Q.15 for complete question text.>

Actual number coded 0 to 2

VAR 0383 # PD W/HISPAN STAFF: F-T NO MISSING DATA CODES  
REF 0383 LOC 1061 WIDTH 4 DK 16 COL 38-41

Q.15(1)e White, Hispanic origin--Payroll staff/Full-time

<See question Q.15 for complete question text.>

Actual number coded 0 to 213

VAR 0384 # PD W/HISPAN STAFF: P-T NO MISSING DATA CODES  
REF 0384 LOC 1065 WIDTH 3 DK 16 COL 42-44

Q.15(2)e White, Hispanic origin--Payroll staff/Part-time

<See question Q.15 for complete question text.>

Actual number coded 0 to 3

VAR 0385 # UNPD W/HISP STAFF: F-T NO MISSING DATA CODES  
REF 0385 LOC 1068 WIDTH 3 DK 16 COL 45-47

Q.15(3)e White, Hispanic origin--Nonpayroll staff/Full-time

<See question Q.15 for complete question text.>

(CONTINUED)

Actual number coded 0 to 1

VAR 0386 # UNPD W/HISP STAFF: P-T MD=GE 999  
REF 0386 LOC 1071 WIDTH 3 DK 16 COL 48-50

Q.15(4)e White, Hispanic origin--Nonpayroll staff/Part-time

<See question Q.15 for complete question text.>

Actual number coded 0 to 2

999. NA

VAR 0387 # PD B/HISPAN STAFF: F-T NO MISSING DATA CODES  
REF 0387 LOC 1074 WIDTH 3 DK 16 COL 51-53

Q.15(1)f Black, Hispanic origin--Payroll staff/Full-time

<See question Q.15 for complete question text.>

Actual number coded 0 to 6

VAR 0388 # PD B/HISPAN STAFF: P-T NO MISSING DATA CODES  
REF 0388 LOC 1077 WIDTH 3 DK 16 COL 54-56

Q.15(2)f Black, Hispanic origin--Payroll staff/Part-time

<See question Q.15 for complete question text.>

Actual number coded 0 to 1

VAR 0389 # UNPD B/HISP STAFF: F-T NO MISSING DATA CODES  
REF 0389 LOC 1080 WIDTH 3 DK 16 COL 57-59

Q.15(3)f Black, Hispanic origin--Nonpayroll staff/Full-time

<See question Q.15 for complete question text.>

Actual number coded 0 to 1

VAR 0390 # UNPD B/HISP STAFF: P-T MD=GE 999  
REF 0390 LOC 1083 WIDTH 3 DK 16 COL 60-62

Q.15(4)f Black, Hispanic origin--Nonpayroll staff/Part-time

<See question Q.15 for complete question text.>

Actual number coded 0 to 1

999. NA

VAR 0391 # PD NAT AMER STAFF: F-T NO MISSING DATA CODES  
REF 0391 LOC 1086 WIDTH 3 DK 16 COL 63-65

Q.15(1)g American Indian/Alaskan Native--Payroll  
staff/Full-time

<See question Q.15 for complete question text.>

Actual number coded 0 to 26

VAR 0392 # PD NAT AMER STAFF: P-T NO MISSING DATA CODES  
REF 0392 LOC 1089 WIDTH 3 DK 16 COL 66-68

Q.15(2)g American Indian/Alaskan Native--Payroll  
staff/Part-time



(CONTINUED)

&lt;See question Q.15 for complete question text.&gt;

Actual number coded 0 to 1  
.....

VAR 0393	# UNPD NAT AMER ST: F-TI	NO MISSING DATA CODES
REF 0393	LOC 1092 WIDTH 2	DK 16 COL 69-70

Q.15(3)g American Indian/Alaskan Native--Nonpayroll  
staff/Full-time  
-----

&lt;See question Q.15 for complete question text.&gt;

Actual number coded 0 to 1  
.....

VAR 0394	# UNPD NAT AMER ST: P-TI	NO MISSING DATA CODES
REF 0394	LOC 1094 WIDTH 2	DK 16 COL 71-72

Q.15(1)g American Indian/Alaskan Native--Nonpayroll  
staff/Part-time  
-----

&lt;See question Q.15 for complete question text.&gt;

Actual number coded 0 to 3  
.....

VAR 0395	# PD PAC ILAND ST: F-TME	NO MISSING DATA CODES
REF 0395	LOC 1096 WIDTH 3	DK 16 COL 73-75

Q.15(1)f Asian/Pacific Islander--Payroll staff/Full-time  
-----

&lt;See question Q.15 for complete question text.&gt;

Actual number coded 0 to 107

VAR 0396	# PD PAC ILAND ST: P-TME	NO MISSING DATA CODES
REF 0396	LOC 1099 WIDTH 3	DK 16 COL 76-78

Q.15(2)f Asian/Pacific Islander--Payroll staff/Part-time  
-----

&lt;See question Q.15 for complete question text.&gt;

Actual number coded 0 to 3  
.....

VAR 0397	# UNPD PAC ILAND ST: F-T	NO MISSING DATA CODES
REF 0397	LOC 1102 WIDTH 2	DK 16 COL 79-80

Q.15(3)f Asian/Pacific Islander--Nonpayroll staff/Full-time  
-----

&lt;See question Q.15 for complete question text.&gt;

Actual number coded 0 to 4

DECK IDENTIFICATION NUMBER IS '17' DK 17 COL 1-2  
-----

VAR 0001	ICPSR STUDY NUMBER-7852	NO MISSING DATA CODES
REF 0001	LOC 1 WIDTH 4	DK 17 COL 3-6

STUDY ID NUMBER  
-----

7852. The ICPSR has attached this number as a study  
identification number.  
.....

VAR 0002	ICPSR VERSION NUMBER-1	NO MISSING DATA CODES
REF 0002	LOC 5 WIDTH 1	DK 17 COL 7

VERSION NUMBER  
-----

1. This is the first version of this study.

VAR 0003 ICPSR PART NUMBER-1 NO MISSING DATA CODES  
REF 0003 LOC 6 WIDTH 1 DK 17 COL 8

PART NUMBER

1. The entire study is contained in one file.

VAR 0004 SEQUENCE NUMBER NO MISSING DATA CODES  
REF 0004 LOC 7 WIDTH 3 DK 17 COL 9-11

SEQUENCE NUMBER

The ICPSR has attached a number to every case. This number uniquely identifies each case in this survey.

VAR 0398 # UNPD PAC ILAND ST: P-T NO MISSING DATA CODES  
REF 0398 LOC 1104 WIDTH 2 DK 17 COL 12-13

Q.15(4)f Asian/Pacific Islander--NonPayroll staff/Part-time

<See question Q.15 for complete question text.>

Actual number coded 0 to 3

VAR 0399 % INMATE ADMIS MED EXAM MD=0  
REF 0399 LOC 1106 WIDTH 1 DK 17 COL 14

Q.16 What percent of the inmates admitted to your facility are given a comprehensive health evaluation (i.e., medical history, physical examination, and prediagnostic tests) within 10 days of admission (excluding weekends and holidays)? Include evaluation given either at this facility or elsewhere, e.g., at a reception/diagnostic center, or other facility where inmate was first admitted.

(CONTINUED)

- 1. None
- 2. 1-25%
- 3. 26-50%
- 4. 51-75%
- 5. 76-99%
- 6. 100%

0. Inap., Question not relevant to facility

VAR 0400 MED EXAM: ANNUALLY, ALL MD=0  
REF 0400 LOC 1107 WIDTH 1 DK 17 COL 15

Q.17 How often are inmates in this facility given a post admission comprehensive health evaluation? Mark (X) all that apply.

Q.17(1) Annually for all inmates

1. Yes

0. Inap., Question not marked

VAR 0401 MED EXAM: >50YRS, YEARLY MD=0  
REF 0401 LOC 1108 WIDTH 1 DK 17 COL 16

Q.17(2) Annually for inmates 50 years or older

<See question Q.17 for complete question text.>

2. Yes

0. Inap., Question not marked

VAR 0402 MED EXAM: BIANNUALLY, ALL MD=0  
 REF 0402 LOC 1109 WIDTH 1 DK 17 COL 17

Q.17(3) Biennially (every 2 years) for all inmates

<See question Q.17 for complete question text.>

- 3. Yes
- 0. Inap., Question not marked

VAR 0403 MED EXAM: >50YRS, BIYR MD=0  
 REF 0403 LOC 1110 WIDTH 1 DK 17 COL 18

Q.17(4) Biennially (every 2 years) for all inmates under 50 years of age

<See question Q.17 for complete question text.>

- 4. Yes
- 0. Inap., Question not marked

VAR 0404 MED EXAM: WHEN NEEDED MD=0  
 REF 0404 LOC 1111 WIDTH 1 DK 17 COL 19

Q.17(5) Post admission comprehensive health evaluation not given on a regular basis, but when needed, e.g., for obviously sick inmates

<See question Q.17 for complete question text.>

- 5. Yes
- 0. Inap., Question not marked

VAR 0405 MED EXAM: OTHER MD=0  
 REF 0405 LOC 1112 WIDTH 1 DK 17 COL 20

Q.17(6) Other

<See question Q.17 for complete question text.>

- 6. Yes
- 0. Inap., Question not marked

VAR 0406 MEDICAL HIST: ADMIS EXAM MD=0 OR GE 9  
 REF 0406 LOC 1113 WIDTH 1 DK 17 COL 21

Q.18 Please indicate which of the following things are routinely done in the admission and/or post admission comprehensive health evaluation. Mark (X) all that apply.

Q.18(1)a Medical history taken--Admission examination

- 1. Yes
- 9. NA
- 0. Inap., Question not marked

VAR 0407 MEDICAL HIST: POST EXAM MD=0  
 REF 0407 LOC 1114 WIDTH 1 DK 17 COL 22

Q.18(2)a Medical history taken--Post admission examination

<See question Q.18 for complete question text.>

- 1. Yes
- 0. Inap., Question not marked

VAR 0408  
REF 0408

BLOOD PRESS: ADMIS EXAM  
LOC 1115 WIDTH 1

MD=0 OR GE 9  
DK 17 COL 23

Q.18(1)b Blood pressure taken--Admission examination  
-----

<See question Q.18 for complete question text.>

- 1. Yes
- 9. NA
- 0. Inap., Question not marked

VAR 0409  
REF 0409

BLOOD PRESS: POST EXAM  
LOC 1116 WIDTH 1

MD=0  
DK 17 COL 24

Q.18(2)b Blood pressure taken--Post admission examination  
-----

<See question Q.18 for complete question text.>

- 1. Yes
- 0. Inap., Question not marked

VAR 0410  
REF 0410

TEST FOR VD: ADMIS EXAM  
LOC 1117 WIDTH 1

MD=0 OR GE 9  
DK 17 COL 25

Q.18(1)c Blood sample taken for venereal  
diseases--Admission examination  
-----

<See question Q.18 for complete question text.>

- 1. Yes
- 9. NA
- 0. Inap., Question not marked

VAR 0411  
REF 0411

TEST FOR VD: POST EXAM  
LOC 1118 WIDTH 1

MD=0  
DK 17 COL 26

Q.18(2)c Blood sample taken for venereal diseases--Post  
admission examination  
-----

<See question Q.18 for complete question text.>

- 1. Yes
- 0. Inap., Question not marked

VAR 0412  
REF 0412

HEPATITIS: ADMIS EXAM  
LOC 1119 WIDTH 1

MD=0 OR GE 9  
DK 17 COL 27

Q.18(1)d Blood sample taken for hepatitis--Admission  
examination  
-----

<See question Q.18 for complete question text.>

- 1. Yes
- 9. NA
- 0. Inap., Question not marked

VAR 0413  
REF 0413

HEPATITIS: POST EXAM  
LOC 1120 WIDTH 1

MD=0  
DK 17 COL 28

Q.18(2)d Blood sample taken for hepatitis--Post admission  
examination  
-----

<See question Q.18 for complete question text.>

- 1. Yes
- 0. Inap., Question not marked

VAR 0414 BLOOD SAMPLE: ADMIS EXAM MD=0 OR GE 9  
REF 0414 LOC 1121 WIDTH 1 DK 17 COL 29

Q.18(1)e Blood sample taken for other reasons--Admission  
examination

<See question Q.18 for complete question text.>

- 1. Yes
- 9. NA
- 0. Inap., Question not marked

VAR 0415 BLOOD SAMPLE: POST EXAM MD=0  
REF 0415 LOC 1122 WIDTH 1 DK 17 COL 30

Q.18(2)e Blood sample taken for other reasons--Post  
admission examination

<See question Q.18 for complete question text.>

- 1. Yes
- 0. Inap., Question not marked

VAR 0416 TEST TB: ADMISSION EXAM MD=0 OR GE 9  
REF 0416 LOC 1123 WIDTH 1 DK 17 COL 31

Q.18(1)f Skin test for tuberculosis given--Admission  
examination

<See question Q.18 for complete question text.>

- 1. Yes
- 9. NA
- 0. Inap., Question not marked

VAR 0417 TEST TB: POST ADMIS EXAM MD=0  
REF 0417 LOC 1124 WIDTH 1 DK 17 COL 32

Q.18(2)f Skin test for tuberculosis given--Post admission  
examination

<See question Q.18 for complete question text.>

- 1. Yes
- 0. Inap., Question not marked

VAR 0418 CHEST X-RAY: ADMIS EXAM MD=0 OR GE 9  
REF 0418 LOC 1125 WIDTH 1 DK 17 COL 33

Q.18(1)g A chest X-ray given--Admission examination

<See question Q.18 for complete question text.>

- 1. Yes
- 9. NA
- 0. Inap., Question not marked

VAR 0419 CHEST X-RAY: POST EXAM MD=0  
REF 0419 LOC 1126 WIDTH 1 DK 17 COL 34

Q.18(2)g A chest X-ray given--Post admission examination

<See question Q.18 for complete question text.>

- 1. Yes
- 0. Inap., Question not marked

VAR 0420 DENTAL: ADMISSION EXAM MD=0 OR GE 9  
REF 0420 LOC 1127 WIDTH 1 DK 17 COL 35

Q.18(1)h A dental examination given--Admission examination

<See question Q.18 for complete question text.>

- 1. Yes
- 9. NA
- 0. Inap., Question not marked

VAR 0421 DENTAL: POST ADMIS EXAM MD=0  
REF 0421 LOC 1128 WIDTH 1 DK 17 COL 36

Q.18(2)h A dental examination given--Post admission examination

<See question Q.18 for complete question text.>

- 1. Yes
- 0. Inap., Question not marked

VAR 0422 EYE: ADMISSION EXAM MD=0 OR GE 9  
REF 0422 LOC 1129 WIDTH 1 DK 17 COL 37

Q.18(1)i An eye examination given--Admission examination

<See question Q.18 for complete question text.>

- 1. Yes
- 9. NA
- 0. Inap., Question not marked

VAR 0423 EYE: POST ADMISSION EXAM MD=0  
REF 0423 LOC 1130 WIDTH 1 DK 17 COL 38

Q.18(2)i An eye examination given--Post admission examination

<See question Q.18 for complete question text.>

- 1. Yes
- 0. Inap., Question not marked

VAR 0424 HEARING: ADMISSION EXAM MD=0 OR GE 9  
REF 0424 LOC 1131 WIDTH 1 DK 17 COL 39

Q.18(1)j A hearing examination given--Admission examination

<See question Q.18 for complete question text.>

- 1. Yes
- 9. NA
- 0. Inap., Question not marked

VAR 0425 HEARING: POST ADMIS EXAM MD=0  
REF 0425 LOC 1132 WIDTH 1 DK 17 COL 40

Q.18(2)j A hearing examination given--Post admission examination

<See question Q.18 for complete question text.>

- 1. Yes
- 0. Inap., Question not marked

VAR 0426 HEIGHT: ADMISSION EXAM MD=0 OR GE 9  
REF 0426 LOC 1133 WIDTH 1 DK 17 COL 41

Q.18(1)k Height measured--Admission examination

<See question Q.18 for complete question text.>

- 1. Yes
- 9. NA
- 0. Inap., Question not marked

VAR 0427 HEIGHT: POST ADMIS EXAM MD=0  
REF 0427 LOC 1134 WIDTH 1 DK 17 COL 42

Q.18(2)k Height measured--Post admission examination

<See question Q.18 for complete question text.>

- 1. Yes
- 0. Inap., Question not marked

VAR 0428 WEIGHT: ADMISSION EXAM MD=0 OR GE 9  
REF 0428 LOC 1135 WIDTH 1 DK 17 COL 43

Q.18(1)l Weight measured--Admission examination

- 1. Yes
- 9. NA
- 0. Inap., Question not marked

VAR 0429 WEIGHT: POST ADMIS EXAM MD=0  
REF 0429 LOC 1136 WIDTH 1 DK 17 COL 44

Q.18(2)l Weight measured--Post admission examination

<See question Q.18 for complete question text.>

- 1. Yes
- 0. Inap., Question not marked

VAR 0430 PULSE: ADMISSION EXAM MD=0 OR GE 9  
REF 0430 LOC 1137 WIDTH 1 DK 17 COL 45

Q.18(1)m Pulse taken--Admission examination

<See question Q.18 for complete question text.>

- 1. Yes
- 9. NA
- 0. Inap., Question not marked

VAR 0431 PULSE: POST ADMIS EXAM MD=0  
REF 0431 LOC 1138 WIDTH 1 DK 17 COL 46

Q.18(2)m Pulse taken--Post admission examination

<See question Q.18 for complete question text.>

- 1. Yes
- 0. Inap., Question not marked

VAR 0432      TEMP: ADMISSION EXAM      MD=0 OR GE 9  
REF 0432      LOC 1139 WIDTH 1      DK 17 COL 47

Q.18(1)n Temperature taken--Admission examination  
-----

<See question Q.18 for complete question text.>

- 1. Yes
- 9. NA
- 0. Inap., Question not marked

VAR 0433      TEMP: POST ADMIS EXAM      MD=0  
REF 0433      LOC 1140 WIDTH 1      DK 17 COL 48

Q.18(2)n Temperature taken--Post admission examination  
-----

<See question Q.18 for complete question text.>

- 1. Yes
- 0. Inap., Question not marked

VAR 0434      URINE SAMP: ADMIS EXAM      MD=0 OR GE 9  
REF 0434      LOC 1141 WIDTH 1      DK 17 COL 49

Q.18(1)o Urine sample taken--Admission examination  
-----

<See question Q.18 for complete question text.>

- 1. Yes
- 9. NA
- 0. Inap., Question not marked

VAR 0435      URINE SAMP: POST AD EXAM      MD=0  
REF 0435      LOC 1142 WIDTH 1      DK 17 COL 50

Q.18(2)o Urine sample taken--Post admission examination  
-----

<See question Q.18 for complete question text.>

- 1. Yes
- 0. Inap., Question not marked

VAR 0436      HEARTBEAT: ADMIS EXAM      MD=0 OR GE 9  
REF 0436      LOC 1143 WIDTH 1      DK 17 COL 51

Q.18(1)p Heartbeat checked--Admission examination  
-----

<See question Q.18 for complete question text.>

- 1. Yes
- 9. NA
- 0. Inap., Question not marked

VAR 0437      HEARTBEAT: POST AD EXAM      MD=0  
REF 0437      LOC 1144 WIDTH 1      DK 17 COL 52

Q.18(2)p Heartbeat checked--Post admission examination  
-----

<See question Q.18 for complete question text.>

- 1. Yes
- 0. Inap., Question not marked



VAR 0438 PAP SMEAR: ADMIS EXAM MD=0 OR GE 9  
REF 0438 LOC 1145 WIDTH 1 DK 17 COL 53

Q.18(1)q Pap smear taken (females)--Admission examination

<See question Q.18 for complete question text.>

- 1. Yes
- 9. NA
- 0. Inap., Question not marked

VAR 0439 PAP SMEAR: POST AD EXAM MD=0  
REF 0439 LOC 1146 WIDTH 1 DK 17 COL 54

Q.18(2)q Pap smear taken (females)--Post admission examination

<See question Q.18 for complete question text.>

- 1. Yes
- 0. Inap., Question not marked

VAR 0440 THROAT CUL: ADMIS EXAM MD=0 OR GE 9  
REF 0440 LOC 1147 WIDTH 1 DK 17 COL 55

Q.18(1)r Throat culture taken--Admission examination

<See question Q.18 for complete question text.>

- 1. Yes
- 9. NA
- 0. Inap., Question not marked

VAR 0441 THROAT CUL: POST AD EXAM MD=0  
REF 0441 LOC 1148 WIDTH 1 DK 17 COL 56

Q.18(2)r Throat culture taken--Post admission examination

<See question Q.18 for complete question text.>

- 1. Yes
- 0. Inap., Question not marked

VAR 0442 RECTAL: ADMISSION EXAM MD=0 OR GE 9  
REF 0442 LOC 1149 WIDTH 1 DK 17 COL 57

Q.18(1)s Rectal examination given--Admission examination

<See question Q.18 for complete question text.>

- 1. Yes
- 9. NA
- 0. Inap., Question not marked

VAR 0443 RECTAL: POST ADMIS EXAM MD=0  
REF 0443 LOC 1150 WIDTH 1 DK 17 COL 58

Q.18(2)s Rectal examination given--Post admission examination

<See question Q.18 for complete question text.>

- 1. Yes
- 0. Inap., Question not marked

VAR 0444 ABDOMINAL: ADMIS EXAM MD=0 OR GE 9  
REF 0444 LOC 1151 WIDTH 1 DK 17 COL 59

Q.18(1)t Liver and abdominal examination given--Admission  
examination

<See question Q.18 for complete question text.>

- 1. Yes
- 9. NA
- 0. Inap., Question not marked

VAR 0445 ABDOMINAL: POST AD EXAM MD=0  
REF 0445 LOC 1152 WIDTH 1 DK 17 COL 60

Q.18(2)t Liver and abdominal examination given--Post  
admission examination

<See question Q.18 for complete question text.>

- 1. Yes
- 0. Inap., Question not marked

VAR 0446 PSYCH: ADMISSION EXAM MD=0 OR GE 9  
REF 0446 LOC 1153 WIDTH 1 DK 17 COL 61

Q.18(1)u Psychological screening given--Admission  
examination

<See question Q.18 for complete question text.>

- 1. Yes
- 9. NA
- 0. Inap., Question not marked

VAR 0447 PSYCH: POST ADMIS EXAM MD=0  
REF 0447 LOC 1154 WIDTH 1 DK 17 COL 62

Q.18(2)u Psychological screening given--Post admission  
examination

<See question Q.18 for complete question text.>

- 1. Yes
- 0. Inap., Question not marked

VAR 0448 OTHER1: ADMISSION EXAM MD=0 OR GE 9  
REF 0448 LOC 1155 WIDTH 1 DK 17 COL 63

Q.18(1)v Other 1--Admission examination

<See question Q.18 for complete question text.>

- 1. Yes
- 9. NA
- 0. Inap., Question not marked

VAR 0449 OTHER1: POST ADMIS EXAM MD=0  
REF 0449 LOC 1156 WIDTH 1 DK 17 COL 64

Q.18(2)v Other 1--Post admission examination

<See question Q.18 for complete question text.>

- 1. Yes
- 0. Inap., Question not marked

VAR 0450 OTHER2: ADMISSION EXAM MD=0 OR GE 9  
REF 0450 LOC 1157 WIDTH 1 DK 17 COL 65

Q.18(1)v Other 2--Admission examination

<See question Q.18 for complete question text.>

- 1. Yes
- 9. NA
- 0. Inap., Question not marked

VAR 0451 OTHER2: POST ADMIS EXAM MD=0  
REF 0451 LOC 1158 WIDTH 1 DK 17 COL 66

Q.18(2)v Other 2--Post admission examination

<See question Q.18 for complete question text.>

- 1. Yes
- 0. Inap., Question not marked

VAR 0452 IN-HOUSE HOSPITAL MD=0  
REF 0452 LOC 1159 WIDTH 1 DK 17 COL 67

Q.19 What medical facilities are available? Mark (X) all that apply?

Q.19(1) Has an in-house medical facility which meets the standards for a licensed hospital with respect to the services it offers

- 1. Yes
- 0. Inap., Question not marked

VAR 0453 ACCESS HOSP PRISON WARD MD=0  
REF 0453 LOC 1160 WIDTH 1 DK 17 COL 68

Q.19(2) Has a contractual agreement with a licensed hospital or has access to a hospital prison ward

<See question Q.19 for complete question text.>

- 2. Yes
- 0. Inap., Question not marked

VAR 0454 SHARES MED FAC OTHR FAC MD=0  
REF 0454 LOC 1161 WIDTH 1 DK 17 COL 69

Q.19(3) Shares medical facilities of another correctional facility

<See question Q.19 for complete question text.>

- 3. Yes
- 0. Inap., Question not marked

VAR 0455 HAS INFIRMARY WITH BEDS MD=0  
REF 0455 LOC 1162 WIDTH 1 DK 17 COL 70

Q.19(4) Has an infirmary in this facility with beds for overnight stay

<See question Q.19 for complete question text.>

- 4. Yes
- 0. Inap., Question not marked

VAR 0456 HAS INFIRMARY W/OUT BEDS MD=0  
REF 0456 LOC 1163 WIDTH 1 DK 17 COL 71

Q.19(5) Has an infirmary in this facility without beds for overnight stay

<See question Q.19 for complete question text.>

- 5. Yes
- 0. Inap., Question not marked

VAR 0457 HAS MEDICAL EXAMING ROOM MD=0  
REF 0457 LOC 1164 WIDTH 1 DK 17 COL 72

Q.19(6) Has a medical examining room in this facility

<See question Q.19 for complete question text.>

- 6. Yes
- 0. Inap., Question not marked

VAR 0458 HAS NO MEDICAL FACILITY MD=0 OR GE 9  
REF 0458 LOC 1165 WIDTH 1 DK 17 COL 73

Q.19(7) None <Has no medical facility>

<See question Q.19 for complete question text.>

- 7. Yes
- 9. NA
- 0. Inap., Question not marked

VAR 0459 MED FACILITY: OTHER MD=0  
REF 0459 LOC 1166 WIDTH 1 DK 17 COL 74

Q.19(8) Other <Medical facility>

<See question Q.19 for complete question text.>

- 8. Yes
- 0. Inap., Question not marked

VAR 0460 # MED DRUG USERS: TOTAL NO MISSING DATA CODES  
REF 0460 LOC 1167 WIDTH 4 DK 17 COL 75-78

Q.20a(1) Approximately, how many inmates are currently receiving medication under prescription?--Total

Actual number coded 0 to 2,000

DECK IDENTIFICATION NUMBER IS '18' DK 18 COL 1- 2

VAR 0001 ICPSR STUDY NUMBER-7852 NO MISSING DATA CODES  
REF 0001 LOC 1 WIDTH 4 DK 18 COL 3- 6

STUDY ID NUMBER

7852. The ICPSR has attached this number as a study identification number.

VAR 0002 ICPSR VERSION NUMBER-1 NO MISSING DATA CODES  
REF 0002 LOC 5 WIDTH 1 DK 18 COL 7

VERSION NUMBER

(CONTINUED)

1. This is the first version of this study.

.....  
 VAR 0003 ICPSR PART NUMBER-1 NO MISSING DATA CODES  
 REF 0003 LOC 6 WIDTH 1 DK 18 COL 8

PART NUMBER  
 -----

3. The entire study is contained in one file.

.....  
 VAR 0004 SEQUENCE NUMBER NO MISSING DATA CODES  
 REF 0004 LOC 7 WIDTH 3 DK 18 COL 9-11

SEQUENCE NUMBER  
 -----

The ICPSR has attached a number to every case. This number uniquely identifies each case in this survey.

.....  
 VAR 0461 # MED DRUG USERS: MALE NO MISSING DATA CODES  
 REF 0461 LOC 1171 WIDTH 4 DK 18 COL 12-15

Q.20a(2) Approximately, how many inmates are currently receiving medication under prescription?--Male  
 -----

Actual number coded 0 to 2,000  
 .....

VAR 0462 # MED DRUG USERS: FEMALE NO MISSING DATA CODES  
 REF 0462 LOC 1175 WIDTH 3 DK 18 COL 16-18

Q.20a(3) Approximately, how many inmates are currently receiving medication under prescription?--Female  
 -----

(CONTINUED)

Actual number coded 0 to 350  
 .....

VAR 0463 # DRUG FOR DEPRESS:TOTAL NO MISSING DATA CODES  
 REF 0463 LOC 1178 WIDTH 4 DK 18 COL 19-22

Q.20b(1) How many inmates are receiving prescription medication for mental or emotional stress, anxiety, or depression?--Total  
 -----

Actual number coded 0 to 1,050  
 .....

VAR 0464 # DRUG FOR DEPRESS: MALE NO MISSING DATA CODES  
 REF 0464 LOC 1182 WIDTH 4 DK 18 COL 23-26

Q.20b(2) How many inmates are receiving prescription medication for mental or emotional stress, anxiety, or depression?--Male  
 -----

Actual number coded 0 to 1,050  
 .....

VAR 0465 # DRUG FOR DEPRESS:FEMALE NO MISSING DATA CODES  
 REF 0465 LOC 1186 WIDTH 3 DK 18 COL 27-29

Q.20b(3) How many inmates are receiving prescription medication for mental or emotional stress, anxiety, or depression?--Female  
 -----

Actual number coded 0 to 125  
 .....

VAR 0466 TOTAL # INMATE DEATH: MA NO MISSING DATA CODES  
 REF 0466 LOC 1189 WIDTH 2 DK 18 COL 30-31

Q.21 Please report the number of inmates who died during calendar year 1978.

(CONTINUED)

Q.21(1)a Total number of inmate deaths in this facility in calendar year 1978--Male

Actual number coded 0 to 19

VAR 0467 TOTAL # INMATE DEATH: FE NO MISSING DATA CODES  
REF 0467 LOC 1191 WIDTH 2 DK 18 COL 32-33

Q.21(2)a Total number of inmate deaths in this facility in calendar year 1978--Female

<See question Q.21 for complete question text.>

Actual number coded 0 to 2

VAR 0468 DEATH, NAT CAUSES: MALE NO MISSING DATA CODES  
REF 0468 LOC 1193 WIDTH 2 DK 18 COL 34-35

Q.21(1)b1 Cause of death-illness/natural causes--Male

<See question Q.21 for complete question text.>

Actual number coded 0 to 17

VAR 0469 DEATH, NAT CASUES:FEMALE NO MISSING DATA CODES  
REF 0469 LOC 1195 WIDTH 2 DK 18 COL 36-37

Q.21(2)b1 Cause of death-illness/natural causes--Female

<See question Q.21 for complete question text.>

Actual number coded 0 to 2

VAR 0470 DEATH, SUICIDE: MALE NO MISSING DATA CODES  
REF 0470 LOC 1197 WIDTH 2 DK 18 COL 38-39

Q.21(1)b2 Cause of death-Suicide--Male

<See question Q.21 for complete question text.>

Actual number coded 0 to 4

VAR 0471 DEATH, SUICIDE: FEMALE NO MISSING DATA CODES  
REF 0471 LOC 1199 WIDTH 2 DK 18 COL 40-41

Q.21(2)b2 Cause of death-Suicide--Female

<See question Q.21 for complete question text.>

Actual number coded 0 to 0

VAR 0472 DEATH, ACCIDENTAL: MALE NO MISSING DATA CODES  
REF 0472 LOC 1201 WIDTH 2 DK 18 COL 42-43

Q.21(1)b3 Cause of death-Accidental injury to self--Male

<See question Q.21 for complete question text.>

Actual number coded 0 to 3

VAR 0473 DEATH, ACCIDENTAL:FEMALE NO MISSING DATA CODES  
REF 0473 LOC 1203 WIDTH 2 DK 18 COL 44-45

Q.21(2)b3 Cause of death-Accidental injury to self--Female

<See question Q.21 for complete question text.>

Actual number coded 0 to 0

VAR 0474 DEATH, INJURY BY OTHR:MA NO MISSING DATA CODES  
REF 0474 LOC 1205 WIDTH 2 DK 18 COL 46-47

Q.21(1)b4 Cause of death-Injury by another person--Male

<See question Q.21 for complete question text.>

Actual number coded 0 to 5

VAR 0475 DEATH, INJURY BY OTHR:FE NO MISSING DATA CODES  
REF 0475 LOC 1207 WIDTH 2 DK 18 COL 48-49

Q.21(2)b4 Cause of death-Injury by another person--Female

<See question Q.21 for complete question text.>

Actual number coded 0 to 0

VAR 0476 DEATH, OTHER: MALE NO MISSING DATA CODES  
REF 0476 LOC 1209 WIDTH 2 DK 18 COL 50-51

Q.21(1)b5 Cause of death-Other death--Male

<See question Q.21 for complete question text.>

Actual number coded 0 to 1

VAR 0477 DEATH, OTHER: FEMALE NO MISSING DATA CODES  
REF 0477 LOC 1211 WIDTH 2 DK 18 COL 52-53

Q.21(2)b5 Cause of death-Other death--Female

<See question Q.21 for complete question text.>

Actual number coded 0 to 0

VAR 0478 NON-RESIDENT PROGRAM ? MD=0  
REF 0478 LOC 1213 WIDTH 1 DK 18 COL 54

Does this facility operate a non-residential program, i.e.,  
in which persons receive counseling, educational services,  
or supervision (e.g. probation or parole) from this facility  
but do not stay overnight?

1. No
2. Yes

0. Inap., Question not relevant to facility

VAR 0479 # NON-RESIDENTS: MALE MD=-10 OR GE 999  
REF 0479 LOC 1214 WIDTH 3 DK 18 COL 55-57

<If yes> Please provide the total number of non-residents  
on November 14, 1979--Male

Actual number coded 0 to 78

- 10. Inap., Coded 1 or 9 in reference 478
- 999. NA

VAR 0480 # NON-RESIDENTS: FEMALE MD=-10 OR GE 999  
REF 0480 LOC 1217 WIDTH 3 DK 18 COL 58-60

<If yes> Please provide the total number of non-residents  
on November 14, 1979--Female

Actual number coded 0 to 30

- 10. Inap., Coded 1 or 9 in reference 478
- 999. NA

VAR 0481 ORIGINAL STRUCTURE USE MD=0  
REF 0481 LOC 1220 WIDTH 1 DK 18 COL 61

Q.2(42) What was the original use of this structure?  
-----

- 1. A private residence
  - 2. A public or private institution
  - 3. A community-based pre-release facility
  - 4. Apartment building
  - 5. Motel, hotel, boarding house, YMCA, rooms for rent
  - 6. Other
0. Inap., Question not relevant to facility

VAR 0482 AVERAGE LENGTH STAY: DAY MD=GE 99  
REF 0482 LOC 1221 WIDTH 2 DK 18 COL 62-63

Q.3(42)2 What is the average length of residency in this facility?  
-----

DAYS

Actual number of Days coded 0 to 29

99. NA

VAR 0483 AVERAGE LENGTH STAY: MON MD=GE 999  
REF 0483 LOC 1223 WIDTH 3 DK 18 COL 64-66

Q.3(42)2 What is the average length of residency in this facility?  
-----

MONTHS

Actual number of Months coded 0 to 883

999. NA

VAR 0484 EXPENDITURES: TOTAL NO MISSING DATA CODES  
REF 0484 LOC 1226 WIDTH 8 DK 18 COL 67-74

Expenditures (amount \$1000)--Total  
-----

Actual number of dollars coded 0 to 99,999,984

DECK IDENTIFICATION NUMBER IS '19' DK 19 COL 1- 2

VAR 0001 ICPSR STUDY NUMBER-7852 NO MISSING DATA CODES  
REF 0001 LOC 1 WIDTH 4 DK 19 COL 3- 6

STUDY ID NUMBER  
-----

7852. The ICPSR has attached this number as a study identification number.

VAR 0002 ICPSR VERSION NUMBER-1 NO MISSING DATA CODES  
REF 0002 LOC 5 WIDTH 1 DK 19 COL 7

VERSION NUMBER  
-----

1. This is the first version of this study.

VAR 0003 ICPSR PART NUMBER-1 NO MISSING DATA CODES  
REF 0003 LOC 6 WIDTH 1 DK 19 COL 8

PART NUMBER  
-----

1. The entire study is contained in one file.



VAR 0004 SEQUENCE NUMBER NO MISSING DATA CODES  
REF 0004 LOC 7 WIDTH 3 DK 19 COL 9-11

SEQUENCE NUMBER

The ICPSR has attached a number to every case. This number uniquely identifies each case in this survey.

VAR 0485 EXPENDITURES: CURRENT OP NO MISSING DATA CODES  
REF 0485 LOC 1234 WIDTH 8 DK 19 COL 12-19

Expenditures (amount \$1000)--Current Operations

Actual number of dollars coded 0 to 33,677

VAR 0486 EXPENDITURES: CAP OUTLAY NO MISSING DATA CODES  
REF 0486 LOC 1242 WIDTH 8 DK 19 COL 20-27

Expenditures (amount \$1000)--Capital Outlay

Actual number of dollars coded 0 to 99,999,984

VAR 0487 PAYROLL NO MISSING DATA CODES  
REF 0487 LOC 1250 WIDTH 8 DK 19 COL 28-35

Payroll (October) (Amount \$1000)

Actual number of dollars coded 0 to 99,999,984

VAR 0488 TYPE OF FAC: 74 CENSUS MD=0  
REF 0488 LOC 1258 WIDTH 1 DK 19 COL 36

1974 Census Type of facility

(CONTINUED)

1. Closed prison
2. Road camp
3. Forestry camp
4. Prison camp
5. Other prison
6. Community center
7. Classification center or medical center
0. Inap., Question not relevant to facility

VAR 0489 TOT INMATE POP:74 CENSUS MD=GE 9999  
REF 0489 LOC 1259 WIDTH 4 DK 19 COL 37-40

1974 Census--Total inmate population

Actual number coded 0 to 3,421

9999. NA

VAR 0490 SURVEY SAMPLE UNIT NO MISSING DATA CODES  
REF 0490 LOC 1263 WIDTH 5 DK 19 COL 41-45

1979 Survey of inmates sample unit

A unique identifying code will appear if this facility is a sample unit

VAR 0491 AGENCY NAME NO MISSING DATA CODES  
REF 0491 LOC 1268 WIDTH 24 DK 19 COL 46-69

Agency name

DECK IDENTIFICATION NUMBER IS '20'

DK 20 COL 1- 2

172

VAR 0001 ICPSR STUDY NUMBER-7852 NO MISSING DATA CODES  
REF 0001 LOC 1 WIDTH 4 DK 20 COL 3-6

STUDY ID NUMBER

7852. The ICPSR has attached this number as a study identification number.

.....  
VAR 0002 ICPSR VERSION NUMBER-1 NO MISSING DATA CODES  
REF 0002 LOC 5 WIDTH 1 DK 20 COL 7

VERSION NUMBER

1. This is the first version of this study.

.....  
VAR 0003 ICPSR PART NUMBER-1 NO MISSING DATA CODES  
REF 0003 LOC 6 WIDTH 1 DK 20 COL 8

PART NUMBER

1. The entire study is contained in one file.

.....  
VAR 0004 SEQUENCE NUMBER NO MISSING DATA CODES  
REF 0004 LOC 7 WIDTH 3 DK 20 COL 9-11

SEQUENCE NUMBER

The ICPSR has attached a number to every case. This number uniquely identifies each case in this survey.

**END**