



102ND ANNUAL FEMA MEETING

Janet Scalese

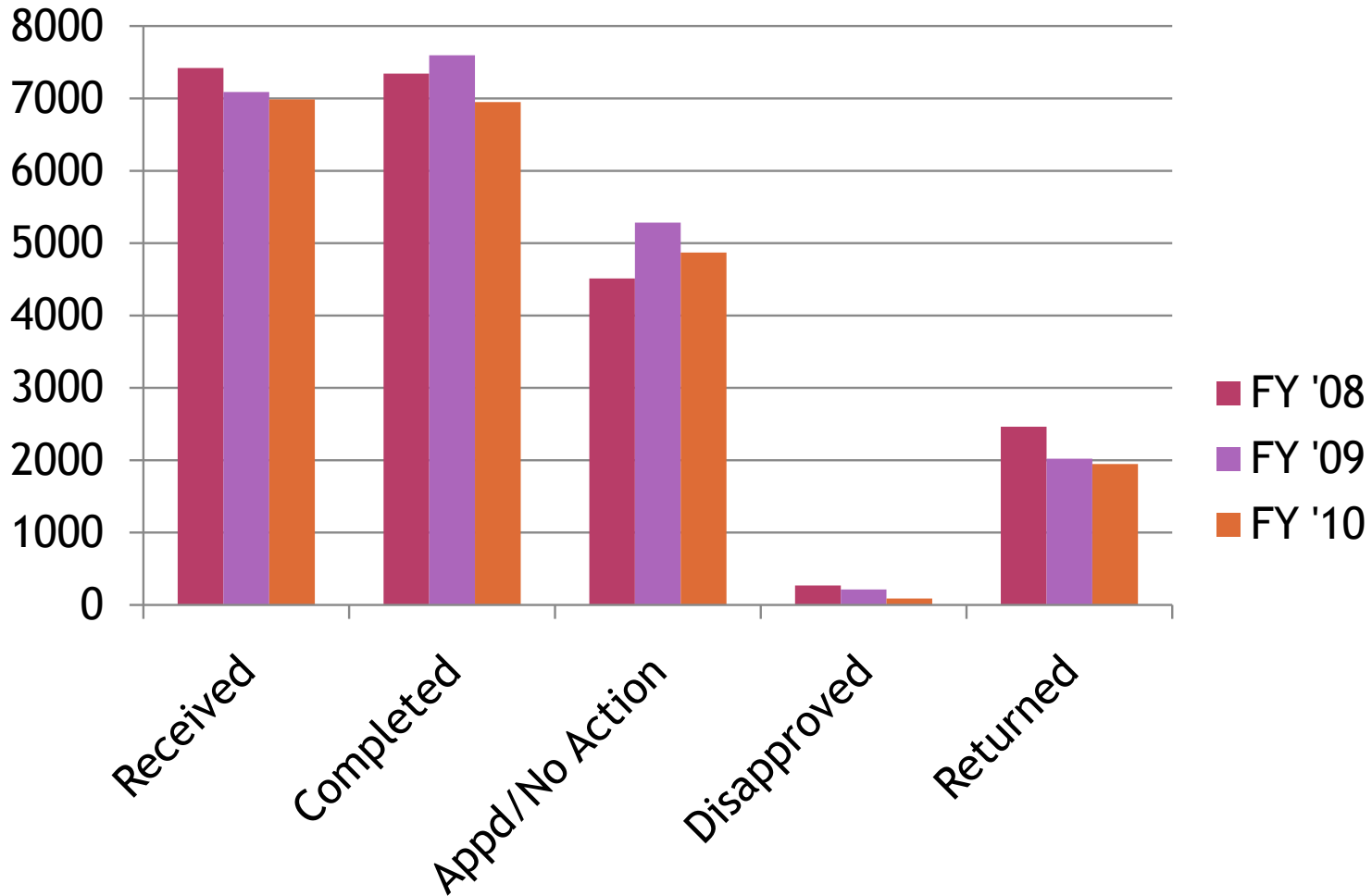
Rachel Sanderoff

TTB Nonbeverage Products Lab

NPL NEWS

- ◉ Formula Stats
- ◉ Revision of Drawback Tutorial
 - Guidelines
- ◉ SDA Regulation Revision
- ◉ New Methods
- ◉ Formulas Online (FONL)

FORMULA STATISTICS



FORMULA FACTS

- Returns still high (~28%)

- Top Reasons

- Calculation Errors
- Disclosure of information
- Missing/Incomplete information

- Improvement in percentage meeting target

- FY '10 77%
- FY '09 68%
- FY '08 55%



Save a tree! Now, submit in duplicate instead of triplicate.

DRAWBACK TUTORIAL

- Revision in progress
 - Topic based
 - Better navigation
 - Based on input from FEMA
- Expanding scope
- Better examples

 [E-mail Updates](#)

[Back to Nonbeverage Products Laboratory page](#)

Drawback Tutorial

- [Drawback Tutorial Home](#)
- [TTB F 5154.1](#)
- [Glossary/References](#)
- [Calculations](#)
- [Unfitness for Beverage Purposes](#)
- [Naming Nonbeverage Products](#)
- [Components of Formulas](#)
- [Submitting Samples with Formulas](#)
- [Revisions to Approved Formulas](#)
- [Special Products](#)
- [Example Formulas](#)

Drawback Tutorial Home

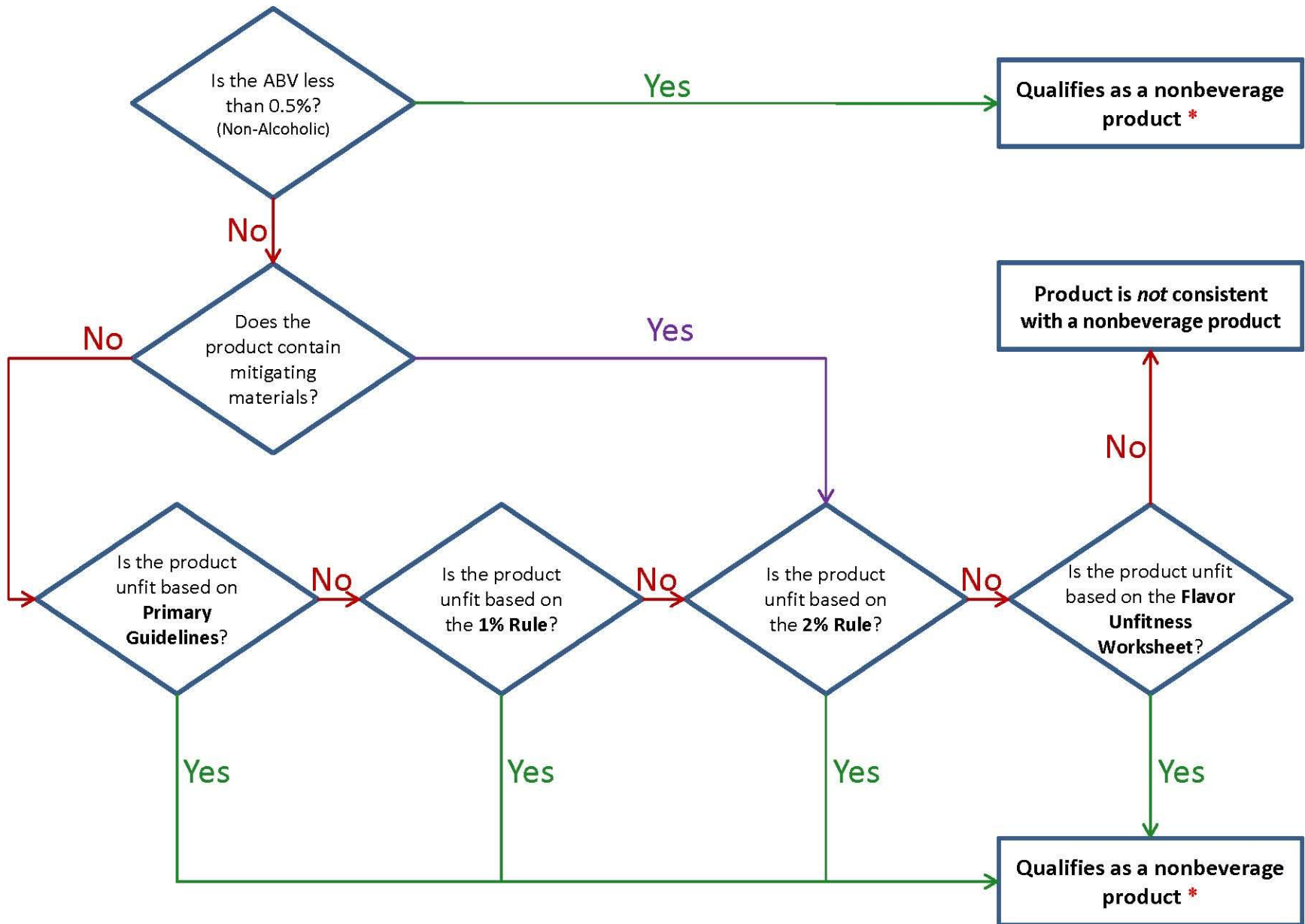
After having reviewed thousands of nonbeverage drawback formulas, many of which contained similar errors, TTB's Nonbeverage Products Laboratory (NPL) chemists decided to construct a tutorial to both codify what the NPL is looking for in formulas and to assist industry members with questions when filling out the TTB Form 5154.1 The Tutorial is topic-based with similar topics grouped under a general heading.

In addition to the topical listing, the Tutorial contains worksheets to determine whether a product is unfit for beverage purposes and ones to assist in performing the calculations required on the form. There are sample formulas representing various types of manufacturing processes and explanations of the calculations for each of these types.

As issues evolve and as time allows, the NPL will expand the topics and the types of sample formulas. Please sign up to be notified of tutorial updates by clicking here ( [E-mail Updates](#)). Visitors to the Tutorial can make suggestions for topics and formulas by contacting the NPL at drawback@ttb.gov however, please do not send status requests to this address.

GUIDELINES AND FUW

- ◉ Various ways to determine unfitness will be listed under one heading
- ◉ Will be better displayed in revised tutorial
- ◉ Will include flow chart for better decision-making



* Submissions must also meet other TTB regulations regarding name, GRAS ingredients and alcohol content calculations

GUIDELINES VS FUW

- ⦿ Choose simplest reason for unfitness
 - If product contains 85% p.g. and no mitigating ingredients, don't worry about FUW
- ⦿ Make certain that you are correct in your determination
 - Don't indicate a product is unfit on a particular material when it is not
- ⦿ No need to include a copy of the FUW; identify ingredient and state amount on formula

FORMULAS ONLINE


FORMULAS ONLINE

- Online submission of Drawback and SDA formulas
- The Highlights!
 - Automatic calculations
 - Status tracking through system
 - Automatic notification of completed formula
 - E-Mail TTB staff

FORMULAS ONLINE

○ Various formula types

- Simple Mixture
- Filtration
- Washed Extract
- Dietary Supplement
- Other - *No Automatic Calculations*



*Alcohol Calculations
Automatic*



Welcome to TTB Online

Publicly available services:

- To view publicly available information about COLAs (both those filed via paper form and online), you may visit the [Public COLA Registry](#).
- View the TTB Online [Frequently Asked Questions \(FAQ\)](#) page on the TTB Internet site.

Services requiring registration and logon:

User Name:

Password:

[New or forgotten password ?](#)

Logon to:

COLAs Online

Formulas Online

[Register for TTB Online](#). Need help on [how to register ?](#)

[Need Help Logging On and Using TTB Online ?](#)

If you are using Internet Explorer 8.0, [click here](#) for more information on browser Compatibility.

[Privacy Policy](#)

[Privacy Impact Assessment](#)

UNITED STATES
DEPARTMENT OF
THE TREASURY



While the Alcohol and Tobacco Tax and Trade Bureau (TTB) makes every effort to provide complete information, data such as company names, addresses, permit numbers, and other data provided in the registry may change over time. TTB makes no warranty, expressed or implied, and assumes no legal liability or responsibility as to the currency, reliability or completeness of furnished data. TTB welcomes suggestions on how to improve our Public COLA Registry. Please contact us via email at fonlwebmaster@ttb.treas.gov.



TTB

ALCOHOL AND TOBACCO TAX AND TRADE BUREAU
U.S. Department of the Treasury



Formulas Online

[Home](#) [Text Menu](#) [My Profile](#) [Help](#) [Contact Us](#) [Log Off](#)

- ▼ New
- Modify Registration
- Formula and Process for Domestic and Imported Alcohol Beverages
- **Formula and Process for Nonbeverage Product**
- Formula and/or Process for Article Made with Specially Denatured Spirits
- Formula and Process for Nonbeverage Product - Rider

[Advanced Search](#)

Records 1 - 2 of 2 (Total Matching Records: 2) (Page 1 of 1)

SUBMISSION ID	SUBMISSION TYPE	PAPER	SUBMISSION STATUS	SUBMISSION DATE	ENTERED BY	SUBMITTER
---------------	-----------------	-------	-------------------	-----------------	------------	-----------

We collect this information to verify your compliance with Federal laws and regulations that TTB administers. The information collected on this form must be considered confidential tax information under 26 U.S.C. 6103, and must not be disclosed to any unauthorized party under 26 U.S.C. 7213.

Home Screen:
Can select a type of new formula to submit.

https://test.ttbonline.gov/ - Formula Action - Windows Internet Explorer

Formula Action

* Action: Create New Formula Supersede Existing Formula

We collect this information to verify your compliance with Federal laws and regulations that TTB administers. The information collected on this form must be considered confidential tax information under 26 U.S.C. 6103, and must not be disclosed to any unauthorized party under 26 U.S.C. 7213.

Google

Formulas Online

[Home](#) [Text Menu](#) [My Profile](#) [Help](#) [Contact Us](#) [Log Off](#)

[Advanced Search](#)

SUBMITTER

We collect this information to verify your compliance with Federal laws and regulations that TTB administers. The information collected on this form must be considered confidential tax information under 26 U.S.C. 6103, and must not be disclosed to any unauthorized party under 26 U.S.C. 7213.

Create a new formula or supersede an existing formula.

Superseding Existing Formula

Requires:

FONL ID#s (*available in dropdown*)

or

Co. Code and TTB # (*not in FONL*)

https://test.ttbonline.gov/ - Formula Action - Windows Internet Explorer

Formula Action

* Action: Create New Formula Supersede Existing Formula

Formula Action

Approved TTB Formula ID:	<input type="text"/>	Approved Company Formula #:	<input type="text" value="POMADD-POM ADDITIVES-12"/>
TTB Formula ID:	<input type="text"/>	OR	
Company Code:	<input type="text"/>	Company Formula #:	<input type="text"/>

OR

SUBMITTER
Rachel Sanderoff
Rachel Sanderoff

Formulas Online
Text Menu My Profile Help Contact Us Log Off
Submissions Search Advanced Search

We collect this information to verify your compliance with Federal laws and regulations that TTB administers. The information collected on this form must be considered confidential tax information under 26 U.S.C. 6103, and must not be disclosed to any unauthorized party under 26 U.S.C. 7213.



TTB

ALCOHOL AND TOBACCO TAX AND TRADE BUREAU
U.S. Department of the Treasury

Formulas Online

[Home](#) [Text Menu](#) [My Profile](#) [Help](#) [Contact Us](#) [Log Off](#)

[New](#) [Modify Registration](#)

Submissions ▾

Search

[Advanced Search](#)

Formula and Process for Nonbeverage Product ?

- Main**
- Formula
- Samples
- Company
- Comments
- Docs/Links

[Print](#) | [Comment](#) | [Upload](#)

Paper Submission

* Create New Formula ? Supersede Existing Formula

* Company Formula #: POMADD ▾ -

TTB Formula ID:

Company ID: POMADD
Company Name: POM ADDITIVES

* Product Name:

* Product Type:

* Kind of Spirits On Which Drawback Will Be Claimed: Alcohol 190 Proof

Main Tab:
Basic information

- TTB #
- Product Name
- Product Type

Contacts

Address Type	Name	Telephone	E-mail Address
--------------	------	-----------	----------------

« Previous

Save as Draft

Validate

Cancel

Submit

Next »

We collect this information to verify your compliance with Federal laws and regulations that TTB administers. The information collected on this form must be considered confidential tax information under 26 U.S.C. 6103, and must not be disclosed to any unauthorized party under 26 U.S.C. 7213.



New Modify Registration

Submissions Search

Advanced Search

Formula and Process for Nonbeverage Product

Main Formula Samples Company Comments Docs/Links

Print Comment Upload

Paper Submission

Create New Formula Supersede Existing Formula

Company Formula #: POMADD - 140

Company ID: POMADD Company Name: POM ADDITIVES

Product Name: Natural Raspberry Flavor WONF

Product Type: [Dropdown]
Kind of Spirits On Which Distilled: Flavor/Flavoring Extract 190 Proof
Contacts: [Dropdown]
Address Type: [Dropdown]

DEPARTMENT OF THE TREASURY BUREAU OF ALCOHOL, TOBACCO AND FIREARMS FORMULA AND PROCESS FOR NONBEVERAGE PRODUCT																						
3. NAME OF PRODUCT. Natural Raspberry Flavor WONF		4. CHECK IF SAMPLE WILL BE SUBMITTED <input type="checkbox"/>	5. NUMBER OF DAYS TO COMPLETE PROCESS 1	1. FORMULA NUMBER 140																		
6. NAME OF THE MANUFACTURER & ADDRESS WHERE PRODUCTS WILL BE PRODUCED (If multiple production sites, list other addresses on reverse). Company A 6000 Ammendale Rd Beltsville, MD 20705		7. CHECK KIND OF PRODUCT: <input type="checkbox"/> MEDICINE/ MEDICAL PREPARATION <input type="checkbox"/> FLAVOR/FLAVORING EXTRACT <input type="checkbox"/> FOOD PRODUCT PERFLUME		2. KIND (e.g. Alcohol, Rum) PROOF OF SPIRITS ON WHICH DRAWBACK WILL BE CLAIMED Alcohol 190 proof Disapproved #12																		
11. IF MADE WITH RECOVERED SPIRITS: ELIGIBLE PLUS RECOVERED ABSOLUTE ALCOHOL BY VOLUME USED. (See instructions)		12. IF FINISHED PRODUCT IS TO BE USED IN ALCOHOLIC BEVERAGES: A. DOES PRODUCT CONTAIN NATURAL FLAVORING? (YES OR NO) B. DOES PRODUCT CONTAIN GREATER THAN 0.1% ARTIFICIAL FLAVORING (Excluding Vanillin, Ethyl Vanillin, Maltol, Ethyl Maltol)? (Yes or No) C. STATE PARTS PER MILLION IN PRODUCT OF: VANILLIN ETHYL VANILLIN SYNTHETIC MALTOL ETHYL MALTOL D. DOES PRODUCT CONTAIN A COLOR ADDITIVE? IF YES, WHICH? E. ARE ALL INGREDIENTS APPROVED BY FDA FOR USE WITHOUT LIMITATION OR RESTRICTION? (YES OR NO)		8. FORMULAS SUPERSEDED.																		
13. FORMULA AND PROCESS (Use Additional Space on Reverse if Necessary)		<table border="0"> <tr> <td>Ethanol 190 proof</td> <td>25 lbs (3.68 gal)</td> </tr> <tr> <td>Propylene Glycol</td> <td>55.8 lbs</td> </tr> <tr> <td>Citric Acid</td> <td>8.7 lbs</td> </tr> <tr> <td>Tannic Acid</td> <td>6.3 lbs</td> </tr> <tr> <td>Nat Raspberry Flavor (5% abv, disapproved #12)</td> <td>4.1 lbs (0.51 gal)</td> </tr> <tr> <td>Nat Ethyl Butyrate (0.05 lbs) and other natural esters</td> <td>0.09 lbs</td> </tr> <tr> <td>Nat Trans-2-Hexenal</td> <td>0.01 lbs</td> </tr> <tr> <td>Theoretical Yield</td> <td>100 lbs (11.5 gal)</td> </tr> <tr> <td>Actual Yield</td> <td>97 lbs (11.155 gal)</td> </tr> </table> <p>density = 8.696 lbs/gal</p> <p>Filtration</p>			Ethanol 190 proof	25 lbs (3.68 gal)	Propylene Glycol	55.8 lbs	Citric Acid	8.7 lbs	Tannic Acid	6.3 lbs	Nat Raspberry Flavor (5% abv, disapproved #12)	4.1 lbs (0.51 gal)	Nat Ethyl Butyrate (0.05 lbs) and other natural esters	0.09 lbs	Nat Trans-2-Hexenal	0.01 lbs	Theoretical Yield	100 lbs (11.5 gal)	Actual Yield	97 lbs (11.155 gal)
Ethanol 190 proof	25 lbs (3.68 gal)																					
Propylene Glycol	55.8 lbs																					
Citric Acid	8.7 lbs																					
Tannic Acid	6.3 lbs																					
Nat Raspberry Flavor (5% abv, disapproved #12)	4.1 lbs (0.51 gal)																					
Nat Ethyl Butyrate (0.05 lbs) and other natural esters	0.09 lbs																					
Nat Trans-2-Hexenal	0.01 lbs																					
Theoretical Yield	100 lbs (11.5 gal)																					
Actual Yield	97 lbs (11.155 gal)																					
14. CONTACT PERSON (include Area Code & Phone No.)		15. SIGNATURE & TITLE OF APPLICATION OR AUTHORIZED AGENT.		16. DATE.																		
APPLICANT: PLEASE MAKE NO ENTRY BELOW THIS LINE.																						
17. LABORATORY SAMPLE NUMBER.		18. ACTION.																				
19. ALCOHOL BY VOLUME.																						
20. ANALYST.																						
21. DATE																						



TTB

ALCOHOL AND TOBACCO TAX AND TRADE BUREAU
U.S. Department of the Treasury

Formulas Online

[Home](#) [Text Menu](#) [My Profile](#) [Help](#) [Contact Us](#) [Log Off](#)

[New](#) [Modify Registration](#)

Submissions [Advanced Search](#)

Formula and Process for Nonbeverage Product ?

Main | [Formula](#) | [Samples](#) | [Company](#) | [Comments](#) | [Docs/Links](#)

[Print](#) | [Comment](#) | [Upload](#)

After all the information is filled in... click the next button.

Paper Submission

Create New Formula ? Supersede Existing Formula

* Company Formula #: POMADD - 140

TTB Formula ID:

Company ID: POMADD
Company Name: POM ADDITIVES

* Product Name: Natural Raspberry Flavor WONF

* Product Type: Flavor/Flavoring Extract

* Kind of Spirits On Which Drawback Will Be Claimed: Alcohol 190 Proof

Contacts

Address Type	Name	Telephone	E-mail Address



We collect this information to verify your compliance with Federal laws and regulations that TTB administers. The information collected on this form must be considered confidential tax information under 26 U.S.C. 6103, and must not be disclosed to any unauthorized party under 26 U.S.C. 7213.



TTB

ALCOHOL AND TOBACCO TAX AND TRADE BUREAU
U.S. Department of the Treasury

Formulas Online

[Home](#) [Text Menu](#) [My Profile](#) [Help](#) [Contact Us](#) [Log Off](#)

[New](#) [Modify Registration](#)

Submissions

Search

[Advanced Search](#)

Formula and Process for Nonbeverage Product

[Main](#) [Formula](#) [Samples](#) [Company](#) [Comments](#) [Docs/Links](#)

[Print](#) | [Comment](#) | [Upload](#)

Paper Submission

Summary

* Measurements Used:

* Process Type:

English Metric

Low	High		TOLERANCE
<input type="text"/>	<input type="text"/>	<input type="text"/> <ul style="list-style-type: none"> Simple Mixture Filtration Washed Extracts Other 	<input type="text"/>
Eligible Absolute Alcohol Used:			
Alcohol Content of Finished Product:			
Eligible Plus Recovered Spirits:		<input type="text"/> % v/v	

Is calculated alcohol content of finished product not the same as declared alcohol content?

* Density of Finished Product:

* Number of Days to Complete Process:

WEIGHT (LB)

WEIGHT (LB)

VOLUME (GAL)

VOLUME (GAL)

(LOW)

(HIGH)

(LOW)

(HIGH)

Theoretical Yield:

Actual Yield:

Alcoholic Beverage Use

Is Finished Product to be Used In Alcohol Beverages?

Formula Tab:

Formula information

- Process Type
- Eligible and Total Alcohol
- Density
- Yields
- Ingredients

Paper Submission

Summary ?

* Measurements Used:

English Metric

* Process Type: ?

- Simple Mixture
- Filtration
- Washed Extracts
- Other

Low High TOLERANCE

Eligible Absolute Alcohol Used:

Alcohol Content of Finished Product:

Eligible Plus Recovered Spirits:

Is calculated alcohol content of finished product not the same as declared alcohol content?

* Density of Finished Product:

* Number of Days to Complete Process:

WEIGHT (LB)	WEIGHT (LB)	VOLUME (GAL)	VOLUME (GAL)
(LOW)	(HIGH)	(LOW)	(HIGH)
<input type="text"/>	<input type="text"/>	<input type="text"/>	<input type="text"/>
<input type="text"/>	<input type="text"/>	<input type="text"/>	<input type="text"/>

Theoretical Yield:

Actual Yield:

Must first select a process type....

Alcoholic Beverage Use ?

Is Finished Product to be Used In Alcoholic Beverages?

Additional Details ?

Unfit for Beverage Statement:

1000 characters left

Taste Panel Results:

1000 characters left

Formula Information and Process:

Paper Submission

Summary ?

* Measurements Used:

English Metric

* Process Type: ?

Filtration ▼

	LOW	HIGH	UNIT	TOLERANCE
Eligible Absolute Alcohol Used:	<input type="text"/>	<input type="text"/>	% v/v ▼	
Alcohol Content of Finished Product:	<input type="text"/>		% v/v ▼	<input type="text"/>
Eligible Plus Recovered Spirits:	<input type="text"/>	<input type="text"/>	% v/v ▼	

Is calculated alcohol content of finished product not the same as declared alcohol content?

* Density of Finished Product:

* Number of Days to Complete Process:

	WEIGHT (LB)	WEIGHT (LB)	VOLUME (GAL)	VOLUME (GAL)
	(LOW)	(HIGH)	(LOW)	(HIGH)
Theoretical Yield:	<input type="text"/>	<input type="text"/>	<input type="text"/>	<input type="text"/>
Actual Yield:	* <input type="text"/>	<input type="text"/>	<input type="text"/>	<input type="text"/>

Alcoholic Beverage Use ?

Is Finished Product to be Used In Alcohol Beverages?

Alcoholic Components/Compounded Flavors ?

- Does product contain eligible alcohol?
- Does product contain disapproved intermediates?
- Does product contain ineligible alcohol?

Nonalcoholic Components ?

- Does product contain ingredients by group?
- Does product contain individual solid ingredients?
- Does product contain individual liquid ingredients?

Additional Details ?

Unfit for Beverage Statement:

1000 characters left

Paper Submission

Summary ?

* Measurements Used:

English Metric

* Process Type: ?

Filtration

	LOW	HIGH	UNIT	TOLERANCE
Eligible Absolute Alcohol Used:	<input type="text"/>	<input type="text"/>	% v/v	
Alcohol Content of Finished Product:	<input type="text"/>	<input type="text"/>	% v/v	<input type="text"/>
Eligible Plus Recovered Spirits:	<input type="text"/>	<input type="text"/>	% v/v	

Is calculated alcohol content of finished product not the same as declared alcohol content?

* Density of Finished Product:

* Number of Days to Complete Process:

	WEIGHT (LB) (LOW)	WEIGHT (LB) (HIGH)	VOLUME (GAL) (LOW)	VOLUME (GAL) (HIGH)
Theoretical Yield:	<input type="text"/>	<input type="text"/>	<input type="text"/>	<input type="text"/>
Actual Yield:	<input type="text" value="97"/>	<input type="text"/>	<input type="text"/>	<input type="text"/>

Any automatically calculated boxes cannot be filled in by user.

FORMULA NUMBER

410

ALCOHOL CONTENT BY VOLUME OF FINISHED PRODUCT.

30.6% ± 2.5

Vanillin, Ethyl Vanillin, Maltol, Ethyl Maltol?

ETHYL VANILLIN

OR NO:

Submitter enters **density** and **actual yield weight**.

Theoretical yield weight is calculated automatically based on ingredients.

Yield volumes are calculated based on density.

Nat Ethyl Butyrate (0.05 lbs) and other natural esters 0.09 lbs
 Nat Trans-2-Hexenal 0.01 lbs

Theoretical Yield 100 lbs (11.5 gal)

Actual Yield 97 lbs (11.155 gal)

density = 8.696 lbs/gal

Filtration

14. CONTACT PERSON (include Area Code & Phone No.) 15. SIGNATURE & TITLE OF APPLICATION OR AUTHORIZED AGENT. 16. DATE.

APPLICANT: PLEASE MAKE NO ENTRY BELOW THIS LINE.

17. LABORATORY SAMPLE NUMBER.	18. ACTION.
19. ALCOHOL BY VOLUME. %	
20. ANALYST.	
21. DATE	

Paper Submission

Summary

Measurements Used:

English Metric

Process Type:

Filtration

	Low	High	UNIT	TOLERANCE
Eligible Absolute Alcohol Used:	<input type="text"/>	<input type="text"/>	% v/v	<input type="text"/>
Alcohol Content of Finished Products:	<input type="text"/>	<input type="text"/>	% v/v	<input type="text"/>
Eligible Plus Recovered Spirits:	<input type="text"/>	<input type="text"/>	% v/v	<input type="text"/>

Is calculated alcohol content of finished product not the same as declared alcohol content?

Density of Finished Product:

8.896

Number of Days to Complete Process:

1

	WEIGHT (LB) (LOW)	WEIGHT (LB) (HIGH)	VOLUME (GAL) (LOW)	VOLUME (GAL) (HIGH)
Theoretical Yield:	<input type="text"/>	<input type="text"/>	<input type="text"/>	<input type="text"/>
Actual Yield:	97	<input type="text"/>	11.155	<input type="text"/>

Alcoholic Beverage Use

Is Finished Product to be Used In Alcoholic Beverages?

Alcoholic Components/Compounded Flavors

- Does product contain eligible alcohol?
- Does product contain disapproved intermediates?
- Does product contain ineligible alcohol?

Nonalcoholic Components

- Does product contain ingredients by group?
- Does product contain individual solid ingredients?
- Does product contain individual liquid ingredients?

Additional Details

Unfit for Beverage Statement:

1000 characters left

Is this product to be used in alcohol beverages?

Alcoholic Beverage Use ?

Is Finished Product to be Used In Alcohol Beverages?

Checking the box opens the section and allows for more information to be entered.

Alcoholic Beverage Use ?

Is Finished Product to be Used In Alcohol Beverages?

Product Contains Natural Flavoring

Product Contains > 0.1% Artificial Flavoring *(excludes Vanillin, Ethyl Vanillin, Maltol, Ethyl Maltol)*

Product Contains Color Additive

All FDA Approved Ingredients Are Without Limitation

TTB LIMITED INGREDIENT	PARTS PER MILLION
Synthetic Vanillin:	<input type="text"/>
Ethyl Vanillin:	<input type="text"/>
Synthetic Maltol:	<input type="text"/>
Ethyl Maltol:	<input type="text"/>

Paper Submission

Summary

Measurements Used:

English Metric

Process Type:

Filtration

Low High UNIT TOLERANCE

Eligible Absolute Alcohol Used: % v/v
 Alcohol Content of Finished Product: % v/v
 Eligible Plus Recovered Spirits: % v/v

Is calculated alcohol content of finished product not the same as declared alcohol content?

Density of Finished Product:

8.696

Number of Days to Complete Process:

1

WEIGHT (LB) WEIGHT (LB) VOLUME (GAL) VOLUME
 (LOW) (HIGH) (LOW) (HIGH)

Theoretical Yield:
 Actual Yield: 97 11.155

Alcoholic Beverage Use

Is Finished Product to be Used In Alcoholic Beverages?

Alcoholic Components/Compounded Flavors

- Does product contain eligible alcohol?
- Does product contain disapproved intermediates?
- Does product contain ineligible alcohol?

Nonalcoholic Components

- Does product contain ingredients by group?
- Does product contain individual solid ingredients?
- Does product contain individual liquid ingredients?

Additional Details

Unfit for Beverage Statement:

1000 characters left

Taste Panel Results:

1000 characters left

Formula Information and Process:

Entering Ingredients

DEPARTMENT OF THE TREASURY BUREAU OF ALCOHOL, TOBACCO AND FIREARMS FORMULA AND PROCESS FOR NONBEVERAGE PRODUCT (See instructions attached-Prepare in triplicate, except if manufactured abroad)			1. FORMULA NUMBER 140
3. NAME OF PRODUCT: Natural Raspberry Flavor WONF			2. KIND (e.g. Alcohol, Rum) PROOF OF SPIRITS ON WHICH DRAWBACK WILL BE CLAIMED Alcohol 190 proof Disapproved #12
4. CHECK IF SAMPLE WILL BE SUBMITTED <input type="checkbox"/>		5. NUMBER OF DAYS TO COMPLETE PROCESS 1	
6. NAME OF THE MANUFACTURER & ADDRESS WHERE PRODUCTS WILL BE PRODUCED (If multiple production sites, list other addresses on reverse). Company A 6000 Amendale Rd Beltsville, MD 20705		7. CHECK KIND OF PRODUCT: <input type="checkbox"/> MEDICINE/ MEDICAL PREPARATION <input type="checkbox"/> FLAVOR/FLAVORING EXTRACT <input type="checkbox"/> FOOD PRODUCT PERFUME 9. ELIGIBLE ABSOLUTE ALCOHOL VOLUME USED. (See instructions) 31.6%	8. FORMULAS SUPERSEDED. 10. ALCOHOL CONTENT BY VOLUME OF FINISHED PRODUCT. 30.6% ± 2.5
11. IF MADE WITH RECOVERED SPIRITS: ELIGIBLE PLUS RECOVERED ABSOLUTE ALCOHOL BY VOLUME USED. (See instructions)		12. IF FINISHED PRODUCT IS TO BE USED IN ALCOHOLIC BEVERAGES: A. DOES PRODUCT CONTAIN NATURAL FLAVORING? (YES OR NO) B. DOES PRODUCT CONTAIN GREATER THAN 0.1% ARTIFICIAL FLAVORING (Excluding Vanillin, Ethyl Vanillin, Maltol, Ethyl Maltol)? (Yes or No) C. STATE PARTS PER MILLION IN PRODUCT OF: VANILLIN ETHYL VANILLIN SYNTHETIC MALTOL ETHYL MALTOL D. DOES PRODUCT CONTAIN A COLOR ADDITIVE? IF YES, WHICH? E. ARE ALL INGREDIENTS APPROVED BY FDA FOR USE WITHOUT LIMITATION OR RESTRICTION? (YES OR NO)	
13. FORMULA AND PROCESS (Use Additional Space on Reverse if Necessary)			
Ethanol 190 proof Propylene Glycol Citric Acid Tannic Acid Nat Raspberry Flavor (5% abv, disapproved #12) Nat Ethyl Butyrate (0.05 lbs) and other natural esters Nat Trans-2-Hexenal		25 lbs (3.68 gal) 55.8 lbs 8.7 lbs 6.3 lbs 4.1 lbs (0.51 gal) 0.09 lbs 0.01 lbs	
		Theoretical Yield 100 lbs (11.5 gal) Actual Yield 97 lbs (11.155 gal)	
density = 8.696 lbs/gal			
Filtration			
14. CONTACT PERSON (include Area Code & Phone No.)		15. SIGNATURE & TITLE OF APPLICATION OR AUTHORIZED AGENT.	16. DATE.
APPLICANT: PLEASE MAKE NO ENTRY BELOW THIS LINE.			
17. LABORATORY SAMPLE NUMBER.		18. ACTION.	
19. ALCOHOL BY VOLUME.			
20. ANALYST.			
21. DATE			

Paper Submission:

Summary

* Measurements Used:

* Process Type:

Low

Eligible Absolute Alcohol Used:

Alcohol Content of Finished Product:

Checking a box allows ingredients to be entered.

Alcoholic Components/Compounded Flavors

Does product contain eligible alcohol?

ELIGIBLE ALCOHOL

<input type="checkbox"/>	INGREDIENT	WEIGHT (LB)	VOLUME (GAL)	DENSITY (LB/GAL)	ALCOHOL(%)
--------------------------	------------	-------------	--------------	------------------	------------

Add

Delete

Does product contain disapproved intermediates?

Does product contain ineligible alcohol?

Alcoholic Beverage Use

Is Finished Product to be Used in Alcohol Beverages?

Alcoholic Components/Compounded Flavors

Does product contain eligible alcohol?

Does product contain disapproved intermediates?

Does product contain ineligible alcohol?

Nonalcoholic Components

Does product contain ingredients by group?

Does product contain individual solid ingredients?

Does product contain individual liquid ingredients?

https://test.ttbonline.gov/?method=editIngredient¤tTab=Formula&index=&type=Simple Mix or - Windows Internet Explorer

Ingredient

Simple Mix or Filtration - Eligible Alcohol

* Ingredient Name:

* Weight (LB):

* Volume (GAL):

* Alcohol (%):

OK Cancel

We collect this information to verify your compliance with Federal laws and regulations that TTB administers. The information collected on this form must be considered confidential tax information under 26 U.S.C. 6103, and must not be disclosed to any unauthorized party under 26 U.S.C. 7213.

Done Trusted sites | Protected Mode: Off 100%

Clicking 'Add' button displays a pop-up window for ingredients.

* Indicates a required field

* Density of Finished Product:

* Number of Days to Complete Process:

	WEIGHT (LB) (LOW)	WEIGHT (LB) (HIGH)	VOLUME (GAL) (LOW)	VOLUME (GAL) (HIGH)
Theoretical Yield:	<input type="text" value="0"/>		<input type="text" value="0"/>	
Actual Yield:	* <input type="text" value="97"/>		<input type="text" value="11.162"/>	

Alcoholic Beverage Use

Is Finished Product to be Used In Alcohol Beverages?

Alcoholic Components/Compounded Flavors

Does product contain eligible alcohol?

ELIGIBLE ALCOHOL

INGREDIENT	WEIGHT (LB)	VOLUME (GAL)	DENSITY (LB/GAL)	ALCOHOL(%)
<input type="button" value="Add"/> <input type="button" value="Delete"/>				

Does product contain disapproved intermediates?

Does product contain ineligible alcohol?

Nonalcoholic Components

Does product contain ingredients by group?

Does product contain individual solid ingredients?

Does product contain individual liquid ingredients?

Additional Details

Ingredient

Simple Mix or Filtration - Eligible Alcohol

* **Ingredient Name:**

* **Weight (LB):**

* **Volume (GAL):**

* **Alcohol (%):**

We collect this information to verify your compliance with Federal laws and regulations that TTB administers. The information collected on this form must be considered confidential tax information under 26 U.S.C. 6103, and must not be disclosed to any unauthorized party under 26 U.S.C. 7213.

REASURY		1. FORMULA NUMBER
WINE AND FIREARMS		140
BEVERAGE PRODUCT		2. KIND (e.g. Alcohol, Rum)
<i>(except if manufactured abroad)</i>		PROOF OF SPIRITS ON WHICH DRAWBACK WILL BE CLAIMED
CHECK IF SAMPLE WILL BE SUBMITTED	5. NUMBER OF DAYS TO COMPLETE PROCESS	Alcohol 190 proof Disapproved #12
<input type="checkbox"/>	1	
3. FORMULAS SUPERSEDED.	7. CHECK KIND OF PRODUCT:	8. FORMULAS SUPERSEDED.
	<input type="checkbox"/> MEDICINE/ MEDICINAL PREPARATION	
	<input checked="" type="checkbox"/> FLAVOR/ FLAVORING EXTRACT	
	<input type="checkbox"/> FOOD PRODUCT	
	<input type="checkbox"/> PERFUME	
9. ELIGIBLE ABSOLUTE ALCOHOL VOLUME USED. (See instructions)		10. ALCOHOL CONTENT BY VOLUME OF FINISHED PRODUCT.
31.6%		30.6% ± 2.5
11. PRODUCT IS TO BE USED IN ALCOHOLIC BEVERAGES:		
12. DOES PRODUCT CONTAIN NATURAL FLAVORING? (YES OR NO)		
13. DOES PRODUCT CONTAIN GREATER THAN 0.1% ARTIFICIAL FLAVORING (Excluding Vanillin, Ethyl Vanillin, Maltol, Ethyl Maltol)?		
14. PER MILLION IN PRODUCT OF: VANILLIN ETHYL VANILLIN		
15. MALTOL ETHYL MALTOL		
16. DOES PRODUCT CONTAIN A COLOR ADDITIVE? IF YES, WHICH?		
17. ARE ALL INGREDIENTS APPROVED BY FDA FOR USE WITHOUT LIMITATION OR RESTRICTION? (YES OR NO)		

13. FORMULA AND PROCESS (Use Additional Space on Reverse if Necessary).

Ethanol 190 proof	25 lbs (3.68 gal)
Propylene Glycol	55.8 lbs
Citric Acid	8.7 lbs
Tannic Acid	6.3 lbs
Nat Raspberry Flavor (5% abv, disapproved #12)	4.1 lbs (0.51 gal)
Nat Ethyl Butyrate (0.05 lbs) and other natural esters	0.09 lbs
Nat Trans-2-Hexenal	0.01 lbs
	Theoretical Yield 100 lbs (11.5 gal)
	Actual Yield 97 lbs (11.155 gal)
density = 8.696 lbs/gal	
Filtration	

14. CONTACT PERSON (include Area Code & Phone No.)	15. SIGNATURE & TITLE OF APPLICATION OR AUTHORIZED AGENT.	16. DATE.
--	---	-----------

APPLICANT: PLEASE MAKE NO ENTRY BELOW THIS LINE.

17. LABORATORY SAMPLE NUMBER.	18. ACTION.
19. ALCOHOL BY VOLUME.	
%	
20. ANALYST.	
21. DATE	

Alcoholic Components/Compounded Flavors

Does product contain eligible alcohol?

ELIGIBLE ALCOHOL

INGREDIENT	WEIGHT (LB)	VOLUME (GAL)	DENSITY (LB/GAL)	ALCOHOL(%)
Alcohol 190 Proof	25	3.679	6.795	95

Add

Delete

Does product contain disapproved intermediates?

DISAPPROVED INTERMEDIATES

INGREDIENT	WEIGHT (LB)	VOLUME (GAL)	DENSITY (LB/GAL)	ELIGIBLE ALCOHOL(%)	TOTAL ALCOHOL (%)	TTB FORMULA ID	COMPANY FORMULA #
------------	-------------	--------------	------------------	---------------------	-------------------	----------------	-------------------

Add

Delete

Does product contain ineligible alcohol?

A NUMBER
140

alcohol, Rum)

PIRITS ON WHICH
WILL BE CLAIMED
**Alcohol 190 proof
approved #12**

AS SUPERSEDED.

CONTENT BY VOLUME
OF PRODUCT.
19.6% ± 2.5

(Vanillin, Maltol, Ethyl Maltol)?

13. FORMULA A AND PROCESS (Use Additional Space on Reverse if Necessary)

D. DOES PRODUCT CONTAIN A COLOR ADDITIVE? IF YES, WHICH?

E. ARE ALL INGREDIENTS APPROVED BY FDA FOR USE WITHOUT LIMITATION OR RESTRICTION? (YES OR NO)

Ethanol 190 proof	25 lbs (3.68 gal)
Propylene Glycol	55.8 lbs
Citric Acid	8.7 lbs
Tannic Acid	6.3 lbs
Nat Raspberry Flavor (5% abv, disapproved #12)	4.1 lbs (0.51 gal)
Nat Ethyl Butyrate (0.05 lbs) and other natural esters	0.09 lbs
Nat Trans-2-Hexenal	0.01 lbs

Theoretical Yield 100 lbs (11.5 gal)
Actual Yield 97 lbs (11.155 gal)

density = 8.696 lbs/gal

Filtration

More than one source
of alcohol.

14. CONTACT PERSON (include Area Code & Phone No.) 15. SIGNATURE & TITLE OF APPLICATION OR AUTHORIZED AGENT. 16. DATE.

APPLICANT: PLEASE MAKE NO ENTRY BELOW THIS LINE.

17. LABORATORY SAMPLE NUMBER.	18. ACTION.
19. ALCOHOL BY VOLUME. %	
20. ANALYST.	
21. DATE	

https://test.tbonline.gov/?method=editingredient¤tTab=Formula&index=&type=Simple Mix or - Windows Internet Explorer

Ingredient

Simple Mix or Filtration - Disapproved Intermediates

* Ingredient Name:

* Weight (LB):

* Volume (GAL):

* Eligible Alcohol (%):

* Total Alcohol (%):

TTB Formula ID:

Company Code:

Company Formula #:

Contains Colors:

Limited Ingredients:

We collect this information to verify your compliance with Federal laws and regulations that TTB administrators. The information collected on this form must be considered confidential tax information under 26 U.S.C. 6103, and must not be disclosed to any unauthorized party under 26 U.S.C. 7213.



DEPARTMENT OF THE TREASURY
BUREAU OF ALCOHOL, TOBACCO AND FIREARMS
FORMULA AND PROCESS FOR NONBEVERAGE PRODUCT
(See instructions attached-Prepare in triplicate, except if manufactured abroad)

3. NAME OF PRODUCT.
Natural Raspberry Flavor WONF

4. CHECK IF SAMPLE WILL BE SUBMITTED

5. NUMBER OF DAYS TO COMPLETE PROCESS

6. NAME OF THE MANUFACTURER & ADDRESS WHERE PRODUCTS WILL BE PRODUCED (if multiple production sites, list other addresses on reverse).
**Company A
6000 Ammendale Rd
Beltsville, MD 20705**

7. CHECK KIND OF PRODUCT:
 MEDICINE/ MEDICINAL PREPARATION
 FLAVOR/ FLAVORING EXTRACT
 FOOD PRODUCT PERFUME

9. ELIGIBLE ABSOLUTE ALCOHOL VOLUME USED. *(See instructions)*
31.6%

11. IF MADE WITH RECOVERED SPIRITS: ELIGIBLE PLUS RECOVERED ABSOLUTE ALCOHOL BY VOLUME USED. *(See instructions)*

12. IF FINISHED PRODUCT IS TO BE USED IN ALCOHOLIC BEVERAGES:
A. DOES PRODUCT CONTAIN NATURAL FLAVORING? (YES OR NO)
B. DOES PRODUCT CONTAIN GREATER THAN 0.1% ARTIFICIAL FLAVORING? *(Excl (Yes or No)*
C. STATE PARTS PER MILLION IN PRODUCT OF: VANILLIN
SYNTHETIC MALTOL ETHYL MALTOL
D. DOES PRODUCT CONTAIN A COLOR ADDITIVE? IF YES, WHICH?
E. ARE ALL INGREDIENTS APPROVED BY FDA FOR USE WITHOUT LIMITATION OR RESTRICTION?

13. FORMULA AND PROCESS *(Use Additional Space on Reverse if Necessary)*

Ethanol 190 proof	25 lbs (3.68 gal)
Propylene Glycol	55.8 lbs
Citric Acid	8.7 lbs
Tannic Acid	6.3 lbs
Nat Raspberry Flavor (5% abv, disapproved #12)	4.1 lbs (0.51 gal)
Nat Ethyl Butyrate (0.05 lbs) and other natural esters	0.09 lbs
Nat Trans-2-Hexenal	0.01 lbs

Theoretical Yield 100 lbs (11.5 gal)
Actual Yield 97 lbs (11.155 gal)

density = 8.696 lbs/gal

Filtration

Nat Raspberry Flavor (5% abv, disapproved #12) 4.1 lbs (0.51 gal)

Nat Ethyl Butyrate (0.05 lbs) and other natural esters 0.09 lbs

Nat Trans-2-Hexenal 0.01 lbs

Theoretical Yield 100 lbs (11.5 gal)

Actual Yield 97 lbs (11.155 gal)

density = 8.696 lbs/gal

Filtration

14. CONTACT PERSON *(Include Area Code & Phone No.)*

15. SIGNATURE & TITLE OF APPLICATION OR AUTHORIZED AGENT.

16. DATE.

APPLICANT: PLEASE MAKE NO ENTRY BELOW THIS LINE.

17. LABORATORY SAMPLE NUMBER.

18. ACTION.

19. ALCOHOL BY VOLUME. %

20. ANALYST.

21. DATE.

If an intermediate is in the system, you can link it to the submission.

Ingredient

Simple Mix or Filtration - Disapproved Intermediates

* Ingredient Name:	Nat Raspberry Flavor
* Weight (LB):	4.1
* Volume (GAL):	0.51
* Eligible Alcohol (%):	5
* Total Alcohol (%):	5
TTB Formula ID:	1000720 <input type="button" value="Select"/>
	<input type="button" value="Clear"/>
Company Code:	POMADD
Company Formula #:	12
Contains Colors:	<input type="checkbox"/>
Limited Ingredients:	<input type="checkbox"/>

We collect this information to verify your compliance with Federal laws and regulations that TTB administers. The information collected on this form must be considered confidential tax information under 26 U.S.C. 6103, and must not be disclosed to any unauthorized party under 26 U.S.C. 7213.

Still have to fill in name, weight, volume, alcohol %

Alcoholic Components/Compounded Flavors

Does product contain eligible alcohol?

ELIGIBLE ALCOHOL

<input type="checkbox"/> INGREDIENT	WEIGHT (LB)	VOLUME (GAL)	DENSITY (LB/GAL)	ALCOHOL(%)
<input type="checkbox"/> Alcohol 190 Proof	25	3.679	6.795	95

Add

Delete

Does product contain disapproved intermediates?

DISAPPROVED INTERMEDIATES

<input type="checkbox"/> INGREDIENT	WEIGHT (LB)	VOLUME (GAL)	DENSITY (LB/GAL)	ELIGIBLE ALCOHOL(%)	TOTAL ALCOHOL (%)	TTB FORMULA ID	COMPANY FORMULA #
<input type="checkbox"/> Raspberry Flavor	4.1	0.51	8.039	5	5	1000720	POMADD-12

Add

Delete

Does product contain ineligible alcohol?



The intermediate is now linked to the formula.

Ethanol 190 proof	25 lbs (3.68 gal)
Propylene Glycol	55.8 lbs
Citric Acid	8.7 lbs
Tannic Acid	6.3 lbs
Nat Raspberry Flavor (5% abv, disapproved #12)	4.1 lbs (0.51 gal)
Nat Ethyl Butyrate (0.05 lbs) and other natural esters	0.09 lbs
Nat Trans-2-Hexenal	0.01 lbs

Theoretical Yield 100 lbs (11.5 gal)
 Actual Yield 97 lbs (11.155 gal)

density = 8.696 lbs/gal

Filtration

Entering
 Nonalcoholic
 Components

Nonalcoholic Components ?

Does product contain ingredients by group?

INGREDIENTS BY GROUP ?

	-----CHEMICAL CLASS----- ----		-----PREDOMINANT CHEMICALS----- -----
<input type="checkbox"/>	NAME	TOTAL WEIGHT (LB)	NATURAL / ARTIFICIAL
			NAME, FEMA #, WEIGHT (LB)

Add

Delete

Does product contain individual solid ingredients?

Does product contain individual liquid ingredients?

Click the check box to
 show the 'add' button.

Ingredient

Nonalcoholic - Group

* Chemical - Class Name:

* Chemical Class - Total Weight (LB):

* Natural/Artificial:

* Predominant Chemical Information:
Name, FEMA #, Weight (LB)

468 characters left

Done	TTB FORMULA ID	COMPANY FORMULA #
<input type="checkbox"/> Raspberry Flavor	1000720	POMADD-12

Does product contain ineligible alcohol?

Nonalcoholic Components

Does product contain ingredients by group?

INGREDIENTS BY GROUP

NAME	CHEMICAL CLAS
<input type="checkbox"/>	

Does product contain individual :
 Does product contain individual I

13. FORMULA AND PROCESS (Use Additional Space on Reverse if Necessary).

Ethanol 190 proof	25 lbs (3.68 gal)
Propylene Glycol	55.8 lbs
Citric Acid	8.7 lbs
Tannic Acid	6.3 lbs
Nat Raspberry Flavor (5% abv, disapproved #12)	4.1 lbs (0.51 gal)
Nat Ethyl Butyrate (0.05 lbs) and other natural esters	0.09 lbs
Nat Trans-2-Hexenal	0.01 lbs

Theoretical Yield 100 lbs (11.5 gal)
 Actual Yield 97 lbs (11.155 gal)

density = 8.696 lbs/gal

Filtration

https://test.ttbonline.gov/?method=editIngredient¤tTab=Formula&index=&type=Nonalcoholic&s - Windows Internet Explorer

Ingredient

Nonalcoholic - Solids

Natural/Artificial:

* Name:

FEMA #:

* Weight (LB):

* Additional Information:

OK Cancel

We collect this information to verify your compliance with Federal laws and regulations that TTB administers. The information collected on this form must be considered confidential tax information under 26 U.S.C. 6103, and must not be disclosed to any unauthorized party under 26 U.S.C. 7213.

Done Trusted sites | Protected Mode: Off 100%

Other Nonalcoholic Component categories:

- Solids
- Liquids

Nonalcoholic Components

Does product contain ingredients by group?

Does product contain individual solid ingredients?

INDIVIDUAL INGREDIENTS (SOLIDS)

NATURAL/ARTIFICIAL NAME	FEMA #	ADDITIONAL

Add Delete

Does product contain individual liquid ingredients?

https://test.ttbonline.gov/?method=editIngredient¤tTab=Formula&index=&type=Nonalcoholic&s - Windows Internet Explorer

Ingredient

Nonalcoholic - Liquids

* Natural/Artificial:

* Name:

FEMA #:

* Weight (LB):

Volume (GAL):

OK Cancel

We collect this information to verify your compliance with Federal laws and regulations that TTB administers. The information collected on this form must be considered confidential tax information under 26 U.S.C. 6103, and must not be disclosed to any unauthorized party under 26 U.S.C. 7213.

Done Trusted sites | Protected Mode: Off 100%

Nonalcoholic Components

Does product contain ingredients by group?

Does product contain individual solid ingredients?

Does product contain individual liquid ingredients?

INDIVIDUAL INGREDIENTS (LIQUIDS)

NATURAL/ARTIFICIAL NAME	FEMA #	WEIGHT (LB)	VOLUME (GAL)

Add Delete

Nonalcoholic Components ?

Does product contain ingredients by group?

INGREDIENTS BY GROUP ?

-----CHEMICAL CLASS-----			-----PREDOMINANT CHEMICALS-----	
<input type="checkbox"/>	NAME	TOTAL WEIGHT (LB)	NATURAL / ARTIFICIAL	NAME, FEMA #, WEIGHT (LB)
<input type="checkbox"/>	Esters	.09	Natural	Ethyl Butyrate, FEMA #2127, 0.05

Add

Delete

Does product contain individual solid ingredients?

INDIVIDUAL INGREDIENTS (SOLIDS) ?

<input type="checkbox"/>	NATURAL/ARTIFICIAL NAME	FEMA #	ADDITIONAL INFORMATION	WEIGHT (LB)
<input type="checkbox"/>	Neither Citric Acid			8.7
<input type="checkbox"/>	Neither Tannic Acid			6.3
<input type="checkbox"/>	Natural Trans-2-Hexenal	2560		0.01

Add

Delete

Does product contain individual liquid ingredients?

INDIVIDUAL INGREDIENTS (LIQUIDS) ?

<input type="checkbox"/>	NATURAL/ARTIFICIAL NAME	FEMA #	WEIGHT (LB)	VOLUME (GAL)
<input type="checkbox"/>	Neither Propylene Glycol		55.8	

Add

Delete

Paper Submission

Eligible Alcohol

Total Alcohol and Tolerance

Summary ?

* Measurements Used:

* Process Type: ?

English Metric

Filtration

	LOW	HIGH	UNIT	TOLERANCE
Eligible Absolute Alcohol Used:	31.562		% v/v	
Alcohol Content of Finished Product:	30.615		% v/v	+/-2.5
Eligible Plus Recovered Spirits:			% v/v	

Is calculated alcohol content of finished product not the same as declared alcohol content?

* Density of Finished Product:

8.696

* Number of Days to Complete Process:

1

Theoretical Yield (weight and volume)

WEIGHT (LB)	WEIGHT (LB)	VOLUME (GAL)	VOLUME (GAL)
(LOW)	(HIGH)	(LOW)	(HIGH)
Theoretical Yield:	100	11.5	
Actual Yield:	* 97	11.155	

Actual Yield (volume)

All calculations are completed automatically!

Additional Details

Unfit for Beverage Statement:

Propylene Glycol = 56.2% v/v

971 characters left

Taste Panel Results:

1000 characters left

Formula Information and Process:

Additional Details:

- Unfit for Beverage Use Statement
- Taste Panel Results
- Formula Information and Process



[New](#) [Modify Registration](#)

[Submissions](#) [Search](#) [Advanced Search](#)

Formula and Process for Nonbeverage Product ?

[Main](#) [Formula](#) [Samples](#) [Company](#) [Comments](#) **[Docs/Links](#)**

[Print](#) | [Comment](#) | [Upload](#)

Paper Submission

Submission Documents ?

TYPE	DESCRIPTION	INVALIDATED FILE	SIZE	DATE
Upload				

Submission Links ?

SUBMISSION ID	DESCRIPTION
Add Delete	

[Save as Draft](#) [Validate](#) [Cancel](#) [S](#)

We collect this information to verify your compliance with Federal laws and regulations that TTB administers. The information under 26 U.S.C. 6103, and must not be disclosed to any unauthorized party under 26 U.S.C. 7213.

Docs/Links Tab:

- Upload files
 - Spec sheets
 - FIDs
 - Etc...
- Link FONL submissions
- Reference purposes

https://test.ttbonline.gov/?method=editAttachment¤tTab=Attachments&index=&parent=Submissi - Windows Intern...

File Edit View Favorites Tools Help

Attachment

Uploaded File Information ?

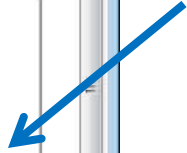
* Description:
100 characters left

* Type: -- Select Type --
-- Select Type --
Adoption Letter
FID Sheet
Method of Manufacture
NBA Rider
Other
Spec Sheet

* File:

We collect this information to verify your compliance with Federal laws and regulations that TTB administers. The information collected on this form must be considered confidential tax information under 26 U.S.C. 6103, and must not be disclosed to any unauthorized

Browse for the file on your computer and upload it to the submission



Main Formula Samples Company Comments Docs/Links

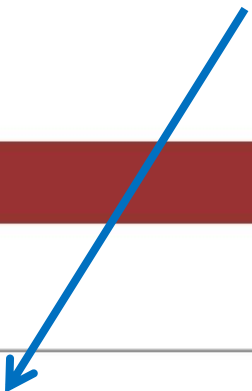
Print | Comment | Upload

Paper Submission

Submission Documents ?

<input type="checkbox"/>	TYPE	DESCRIPTION	INVALIDATED FILE	SIZE	DATE	
<input type="checkbox"/>	Spec Sheet	Spec Sheet for purchased product.	<input type="checkbox"/> specsheet.pdf	20 Kb	04/22/2011	edit

Click 'Upload' and a pop-up will appear





[New](#) [Modify Registration](#)

Submissions [Advanced Search](#)

Formula and Process for Nonbeverage Product ?

[Main](#) [Formula](#) **[Samples](#)** [Company](#) [Comments](#) [Docs/Links](#)

[Print](#) | [Comment](#) | [Upload](#)

Paper Submission

Sample Detail ?

<input type="checkbox"/>	SAMPLE ID	LIMS ID	QUANTITY	UNIT	% FILL	DESCRIPTION OF CONTENTS	DATE SENT	DATE RECEIVED
<input type="button" value="Add"/>								

We collect this information to verify your compliance with Federal laws and regulations that TTB administers. The information collected on this form must be considered confidential tax information under 26 U.S.C. 6103, and must not be disclosed to any unauthorized party under 26 U.S.C. 7213.

Samples Tab:

- Used only if a sample is needed
- Enter sample information

Sample

Sample Information

Sample ID: _____
Quantity: _____ Unit of Measure: _____
% Fill: _____
* Description: _____

- Main
- Formula
- Samples**
- Company
- Comments
- Docs/Links

Print | Comment | Upload

Paper Submission

Sample Detail

For Selected Samples:

<input type="checkbox"/>	SAMPLE ID	LIMS ID	QUANTITY	UNIT	% FILL	DESCRIPTION OF CONTENTS	DATE SENT	DATE RECEIVED
<input type="checkbox"/>	Pending		2.0	oz		TTB #78		

Will say pending until formula is submitted.

Date Received is completed by lab

Perjury Statement

Under the penalties of perjury, I declare that all the statements appearing on this application, including supplemental documents, are true and correct to the best of my knowledge and belief. I also certify that I have read, understood, and complied with the conditions and instructions for filing this application.

I agree

OK

Cancel

We collect this information to verify your compliance with Federal laws and regulations that TTB administers. The information collected on this form must be considered confidential tax information under 26 U.S.C. 6103, and must not be disclosed to any unauthorized party under 26 U.S.C. 7213.

Formulas Online

Home Text Menu My Profile Help Contact Us Log Off

Submissions Search Advanced Search

beverage Product

Submitting formula displays pop-up.

Submission ID: 1001631

Date Submitted:

Status: Draft

Summary

Measurements Used:

Process Type:

English Metric

Filtration

	LOW	HIGH	UNIT	TOLERANCE
Eligible Absolute Alcohol Used:	31.362		% v/v	
Alcohol Content of Finished Product:	30.615		% v/v	+/-2.5
Eligible Plus Recovered Spirits:			% v/v	

Is calculated alcohol content of finished product not the same as declared alcohol content?

Density of Finished Product:

8.696

Number of Days to Complete Process:

1

	WEIGHT (LB) (LOW)	WEIGHT (LB) (HIGH)	VOLUME (GAL) (LOW)	VOLUME (GAL) (HIGH)
Theoretical Yield:	100		11.5	
Actual Yield:	97		11.155	



TTB

ALCOHOL AND TOBACCO TAX AND TRADE BUREAU
U.S. Department of the Treasury

Formulas Online

[Home](#) [Text Menu](#) [My Profile](#) [Help](#) [Contact Us](#) [Log Off](#)

[New](#) [Modify Registration](#)

Submissions ▾

Search

[Advanced Search](#)

Formula and Process for Nonbeverage Product

Thank You. Your submission has been successfully completed. You will be contacted by e-mail when analysis has been completed or if additional information is needed.

*When referring to this formula in Formulas Online and COLAs Online, please use the following.
TTB Formula ID: 1000721.*

To mail your samples, return to the Samples screen to display printable sample identification labels with mailing instructions.

We collect this information to verify your compliance with Federal laws and regulations that TTB administers. The information collected on this form must be considered confidential tax information under 26 U.S.C. 6103, and must not be disclosed to any unauthorized party under 26 U.S.C. 7213.

After formula is
submitted...

TTB Formula ID
(different from Submission ID).

Mailing samples:
Click on the 'return to the
Samples' screen link....



TTB

ALCOHOL AND TOBACCO TAX AND TRADE BUREAU
U.S. Department of the Treasury

Formulas Online

[Home](#) [Text Menu](#) [My Profile](#) [Help](#) [Contact Us](#) [Log Off](#)

[New](#) [Modify Registration](#)

Submissions ▾

Search

[Advanced Search](#)

Formula and Process for Nonbeverage Product ?

[Main](#) [Formula](#) **[Samples](#)** [Company](#) [Comments](#) [Docs/Links](#) [Return](#)

[Copy as New](#) | [Print](#) | [Comment](#) | [Notify](#) | [Upload](#) | [Withdraw](#)

Paper Submission

Submission ID: 1001631 TTB Formula ID: 1000721 Date Submitted: 04-22-2011 10:30 AM
Status: In Process

Sample Detail ?

For Selected Samples:

▾
Enter Date Sent
Print Sample ID Sheet

Go

<input type="checkbox"/> SAMPLE ID	LIMS	UNIT	% FILL	DESCRIPTION OF CONTENTS	DATE SENT	DATE RECEIVED
<input type="checkbox"/> 1001111		oz		TTB #78		

Save

We collect this information to verify your compliance with Federal laws and regulations that TTB administers. The information collected on this form must be considered confidential tax information under 26 U.S.C. 6103, and must not be disclosed to any unauthorized party under 26 U.S.C. 7213.

Back to the Samples tab...
Use drop down to print a
Sample ID sheet.

Print this page



TTB

ALCOHOL AND TOBACCO TAX AND TRADE BUREAU
U.S. Department of the Treasury

Submission ID: 1001631

Submission Type: Drawback

Sample ID: 1001111

Sample Content: TTB #78

Purpose of Analysis:

Product / Fanciful Name: Raspberry Flavor WONF

Submitted By: Rachel Sanderoff

Submission Date: 04-22-2011 10:30 AM

Sample Mailing Instructions:

Attach the correct Sample ID Sheet to each sample and send to:
National Laboratory Center
Nonbeverage Products Laboratory
Attn: Drawback
6000 Annapendale Road
Beltsville, MD 20705

MUST BE MAILED WITH THE SAMPLE!

Contains ID numbers to connect the
sample with the submission.

Email received after formula is
submitted.

From: ttb.fonl@ttb.gov
Sent: Friday, April 22, 2011 2:31 PM
To: Sanderoff, Rachel K.
Subject: Submitter: Your Submission has been received

Dear Submitter: Your Submission ID 1001631 has been received by the TTB Formulas Online system. You will be notified when analysis has been completed or if additional information is needed.

If you identified one or more physical samples being sent to the TTB laboratory, please follow the sample mailing instructions that were provided to you when you made the submission. To view the mailing instructions again, please select the link at the end of this message to logon to Formulas Online. After you have logged on, select the submission displayed on the My Submissions page, select the Samples tab, select the Sample(s), and select 'Print Sample ID Sheet' option.

You may also view the submission at any time.

Thank You for using Formulas Online!

<https://test.ttbonline.gov/formulasonline/TTBOnlinePortal.jsp>

Email received after sample is received.

From: ttb.fonl@ttb.gov
Sent: Monday, April 25, 2011 9:55 PM
To: Sanderoff, Rachel K.
Subject: Submitter: All of the samples that accompany your recent submission have been received at our labs.

Dear Submitter: All samples for your Submission ID 1001631 have been received by the TTb Formulas Online system. There is no additional action needed by you. You will be notified when analysis has been completed or if additional information is needed. You may view the submission at any time by selecting the link at the end of this message to logon to Formulas Online, then selecting the submission ID displayed on the My Submissions page. Thank You!

<https://test.ttbonline.gov/formulasonline/TTBOnlinePortal.jsp>

Emails will also be sent when action has been taken on the submission or if the submission is being returned for correction.

From: ttb.fonl@ttb.gov
Sent: Monday, April 25, 2011 10:57 AM
To: Sanderoff, Rachel K.
Subject: Submitter: Submission has been returned for correction

Dear Submitter: A submission you made to the TTB Formulas Online system needs correction before analysis can continue. Please select the link at the end of this message to logon to Formulas Online. After you have logged on, select Submission ID 1001631 displayed on the My Submissions page, and select the Return tab to view the corrections needed.

Please make the requested corrections and Submit. If a new or replacement physical sample is requested in the Return reasons, please add the new or replacement sample on the Sample tab before submitting. You will be notified when analysis has been completed or if additional corrections are needed. Thank You!

<https://test.ttbonline.gov/formulasonline/TTBOnlinePortal.jsp>

Formula and Process for Nonbeverage Product

- Main
- Formula
- Samples
- Company
- Comments
- Docs/Links
- Return**



[Copy as New](#) | [Print](#) | [Comment](#) | [Notify](#) | [Upload](#) | [Withdraw](#)

Paper Submission

Submission ID: 1001631 TTB Formula ID: 1000721 Date Submitted: 04-22-2011 10:30 AM
Status: Needs Correction

Needs Correction Information

NEEDS CORRECTION REASON	REASON DESCRIPTION	ADDITIONAL DESCRIPTION	RESOLVED?
Error In Field	There is an error in the following field. Please refer to the Drawback tutorial for more information.	Provide the predominant ingredient(s) for the Natural Esters grouping.	<input type="checkbox"/>



Return Tab:

- Only visible if the submission is returned for correction.
- Reason and description of error.
- Edit formula and submit again.

Once corrected, the lab (not the submitter) will check the Resolved box. The Return tab and the reason for the return will remain with the submission even after the error is corrected.

Email received when submission is complete.

From: ttb.fonl@ttb.gov
Sent: Friday, April 22, 2011 9:56 PM
To: Sanderoff, Rachel K.
Subject: Submitter: Your submission has completed final processing in the FONL system.

Dear Submitter: The TTB has completed analysis of your Submission 1001630 in the TTB Formulas Online system. Please select the link at the end of this message to logon to Formulas Online. After you have logged on, select the Submission ID from the My Submissions page, and select the Results tab to view the results of the analysis. Thank You!

<https://test.ttbonline.gov/formulasonline/TTBOnlinePortal.jsp>



TTB

ALCOHOL AND TOBACCO TAX AND TRADE BUREAU
U.S. Department of the Treasury

Formulas Online

[Home](#) [Text Menu](#) [My Profile](#) [Help](#) [Contact Us](#) [Log Off](#)

[New](#) [Modify Registration](#)

Submissions ▾

Search

[Advanced Search](#)

Formula and Process for Nonbeverage Product ?

[Main](#) [Formula](#) [Samples](#) [Results](#) [Company](#) [Comments](#) [Docs/Links](#) [Return](#)

[Copy as New](#) | [Print](#) | [Comment](#) | [Notify](#) | [Surrender](#)

Paper Submission

Submission ID: 1001631 TTB Formula ID: 1000721 Date Submitted: 04-22-2011 10:30 AM

Status: Closed

Disposition: Approved

* Create New Formula Supersede Existing Formula

* Company Formula #: POMADD - 140 TTB Formula ID: 1000721
Company ID: POMADD Company Name: POM ADDITIVES

* Product Name: Raspberry Flavor WONF
* Product Type: Flavor/Flavoring Extract

* Kind of Spirits On Which Drawback Will Be Claimed: Alcohol 190 Proof and Disapproved #12

Contacts

Address Type	Name	Telephone	E-mail Address
--------------	------	-----------	----------------

Entered by: Rachel Sanderoff Submitted by: Rachel Sanderoff
Created Date: 04-22-2011 09:32 AM

Once the submission is closed, the Results tab will be visible.



TTB

ALCOHOL AND TOBACCO TAX AND TRADE BUREAU
U.S. Department of the Treasury

Formulas Online

[Home](#) [Text Menu](#) [My Profile](#) [Help](#) [Contact Us](#) [Log Off](#)

[New](#) [Modify Registration](#)

[Submissions](#) [Search](#) [Advanced Search](#)

Formula and Process for Nonbeverage Product ?

[Main](#) [Formula](#) [Samples](#) **[Results](#)** [Company](#) [Comments](#) [Docs/Links](#) [Return](#)

[Copy as New](#) | [Print](#) | [Comment](#) | [Notify](#) | [Surrender](#)

Paper Submission

Submission ID:	1001631	TTB Formula ID:	1000721	Date Submitted:	04-22-2011 10:30 AM
Status:	Closed	Disposition:	Approved		

Laboratory Analysis

Date of Disposition:	04/28/2011
Disposition:	Approved
Analyst:	Rachel Sanderoff

We collect this information to verify your compliance with Federal laws and regulations that TTB administers. The information collected on this form must be considered confidential tax information under 26 U.S.C. 6103, and must not be disclosed to any unauthorized party under 26 U.S.C. 7213.

Results Tab:

- Date of Disposition
- Disposition
- Analyst



TTB

ALCOHOL AND TOBACCO TAX AND TRADE BUREAU
U.S. Department of the Treasury



Formulas Online

[Home](#) [Text Menu](#) [My Profile](#) [Help](#) [Contact Us](#) [Log Off](#)

[New](#) [Modify Registration](#)

Submissions ▾

[Advanced Search](#)

My Submissions

Apply Sort

Clear Sort

Records 1 - 2 of 2 (Total Matching Records: 2) (Page 1 of 1)

SUBMISSION ID	SUBMISSION TYPE	PAPER	SUBMISSION STATUS	SUBMISSION DATE	ENTERED BY	SUBMITTER
1001630	Formula and Process for Nonbeverage Product	N	Disapproved	04/22/2011	Rachel Sanderoff	Rachel Sanderoff
1001631	Formula and Process for Nonbeverage Product	N	In Process	04/22/2011	Rachel Sanderoff	Rachel Sanderoff

We collect this information to verify your compliance with Federal laws and regulations that TTB administers. The information collected on this form must be considered confidential tax information under 26 U.S.C. 6103, and must not be disclosed to any unauthorized party under 26 U.S.C. 7213.

Submission Status:

- Disposition (approved, no action, etc) → submission is complete
- In Process → submission is still with TTB

Action Bar:

- Available actions depend on the status of the submission

Copy as New:

Create a new submission by copying another formula.

Print:

Print entire submission or specific tabs.

Comment:

Displays the Comment pop-up window to add a comment to the submission.

Notify:

Displays the Create E-Mail pop-up window. Allows user to send TTB staff an email.

Withdraw:

Can withdraw an in-process submission and cancel it permanently.

The screenshot shows a web application interface for a submission. At the top, there is a navigation menu with tabs: Main, Formula, Samples, Company, Comments. Below this is an action bar with buttons: Copy as New, Print, Comment, Notify, Withdraw. The main content area displays submission details: Paper Submission, Submission ID: 1001631, Status: In Process, and a date: 04-22-2011 10:30 AM. Below the details is a navigation menu with tabs: Main, Formula, Samples, Company, Comments, Docs/Links, Return. At the bottom, there is a table with columns: Address Type, Name, Telephone, E-mail Address. The table contains two rows of data: Entered by: Rachel Sanderoff, Submitted by: Rachel Sanderoff; Created Date: 04-22-2011 09:32 AM.

Address Type	Name	Telephone	E-mail Address
Entered by:	Rachel Sanderoff	Submitted by:	Rachel Sanderoff
Created Date:	04-22-2011 09:32 AM		

https://test.ttbonline.gov/?method=sendNotification¤tTab=Main&OWASP_CSRFTOKEN=QMNP-ALP9...

E-mail Notification

Create E-Mail

To:

Cc:

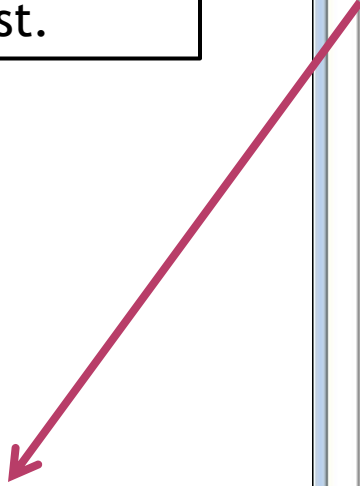
* Subject:

Message:

2000 characters left

Send Cancel

E-Mail pop-up:
Click on "To" to display
contact list.



https://test.ttbonline.gov/ - Formulas Online - Contact - Windows Internet Explorer

Contact List

Contact List

Select Recipients:

- NPL Chief
- NPL LIE
- NPL QA Reviewer

Hold CTRL to select multiple recipients

To:

CC:

OK Cancel

We collect this information to verify your compliance with Federal laws and regulations that TTB administers. The information collected on this form must be considered confidential tax information under 26 U.S.C. 6103, and must not be disclosed to any unauthorized party under 26 U.S.C. 7213.

ur compliance with Federal laws and regulations that TTB administers. The
t be considered confidential tax information under 26 U.S.C. 6103, and must not
y under 26 U.S.C. 7213.

FORMULAS ONLINE

⦿ Timeline

- May 2011 - User testing
- July 2011 - Go live!

⦿ User Registration

- 2-4 weeks ahead of release

⦿ Training

- Sessions in Beltsville
- Webinars/Webcasts

QUESTIONS??