

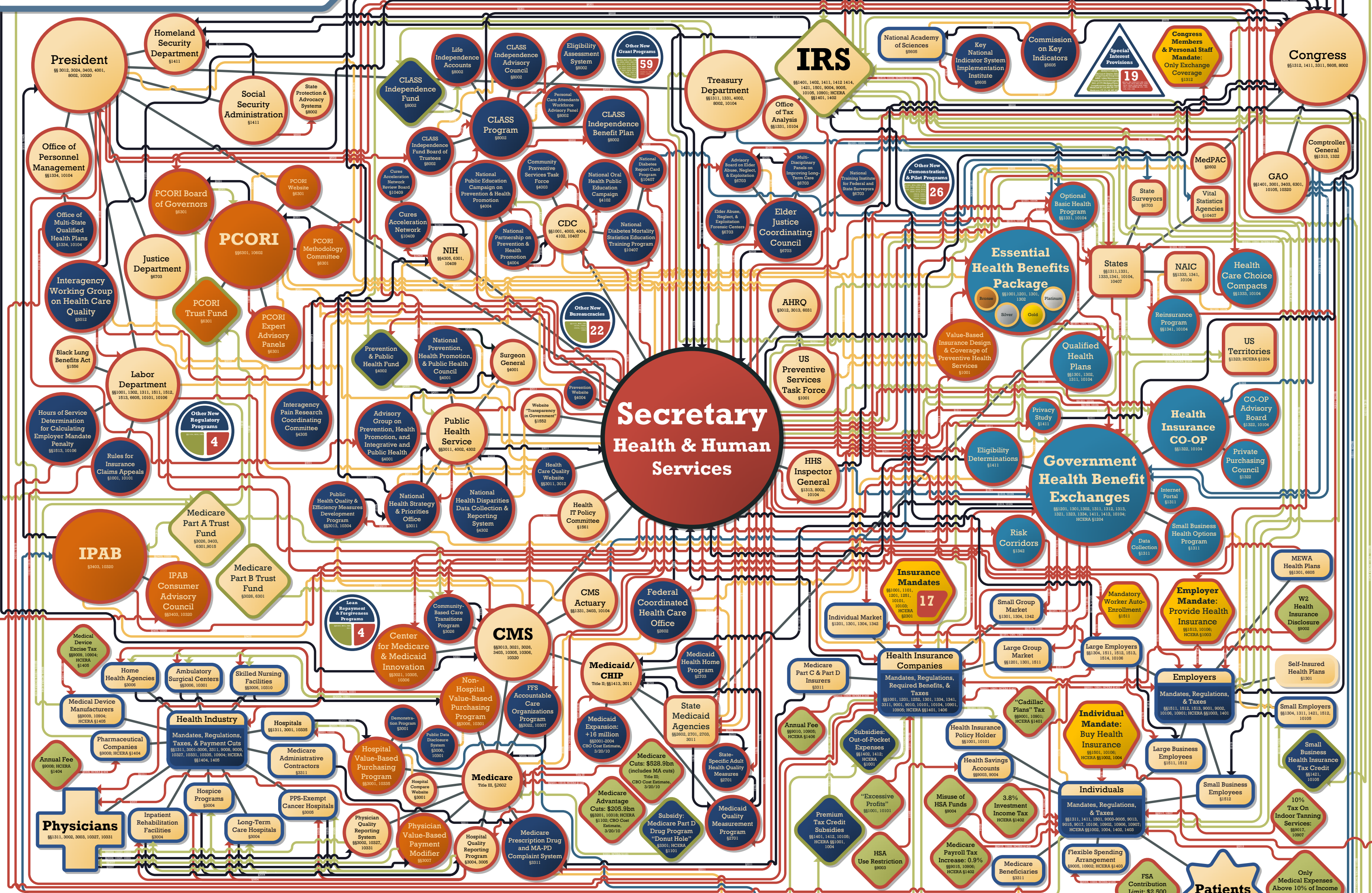
Your New Health Care System

**Patient Protection & Affordable Care Act, P.L. 111-148;
Health Care & Education Reconciliation Act, P.L. 111-152**

PRESS PACKET

*Prepared by: Joint Economic Committee, Republican Staff
Congressman Kevin Brady, Senior House Republican
Senator Sam Brownback, Ranking Member*

Your New Health Care System



New Government

- Rationing Potential
- Involvement in Health Insurance Market
- Other Expansions
- Represents Bundles of Additional Entities
- ◊ Mandates
- ◊ Taxes & Monetary Fees/Penalties/Cuts
- ◊ Trust Fund (Rationing Potential)
- ◊ Other New Trust Funds/Monetary Benefits

Expanded Government

- Government with Expanded Authority/Responsibility
- Government Financial Entity with New Inflows/Outflows
- State/Territory with Expanded Authority/Responsibility

Private

- Private Entity with New Mandates/Regulations/Responsibilities
- Unchanged Private Entity
- ◊ Special Interest Provisions

New Relationships

- Regulations/Requirements/Mandates
- Reporting Requirements
- Oversight
- Money Flows
- Consultation/Advisory/Info Sharing
- Structural Connections (Includes Existing)

AGI: Adjusted Gross Income
 AHRQ: Agency for Healthcare Research and Quality
 CDC: Centers for Disease Control and Prevention
 CHIP: Children's Health Insurance Program
 CLASS: Community Living Assistance Services & Supports
 CMS: Centers for Medicare & Medicaid Services
 CO-OP: Consumer Operated & Oriented Program
 FFS: Fee-for-Service
 FSA: Flexible Spending Arrangement
 GAO: Government Accountability Office
 HCERA: Health Care & Education Reconciliation Act
 HHS: Health & Human Services Department

HSA: Health Savings Account
 IPAB: Independent Payment Advisory Board
 IRS: Internal Revenue Service
 MA-PD: Medicare Advantage Prescription Drug
 MedPAC: Medicare Payment Advisory Commission
 MERD: Medical Early Risk Detection
 EALORS: Executive Auxiliary Linked Office Regional Systems
 MEWA: Multiple Employer Welfare Arrangement
 NAIC: National Association of Insurance Commissioners
 NIH: National Institutes of Health
 PCORI: Patient-Centered Outcomes Research Institute
 PPS: Prospective Payment System

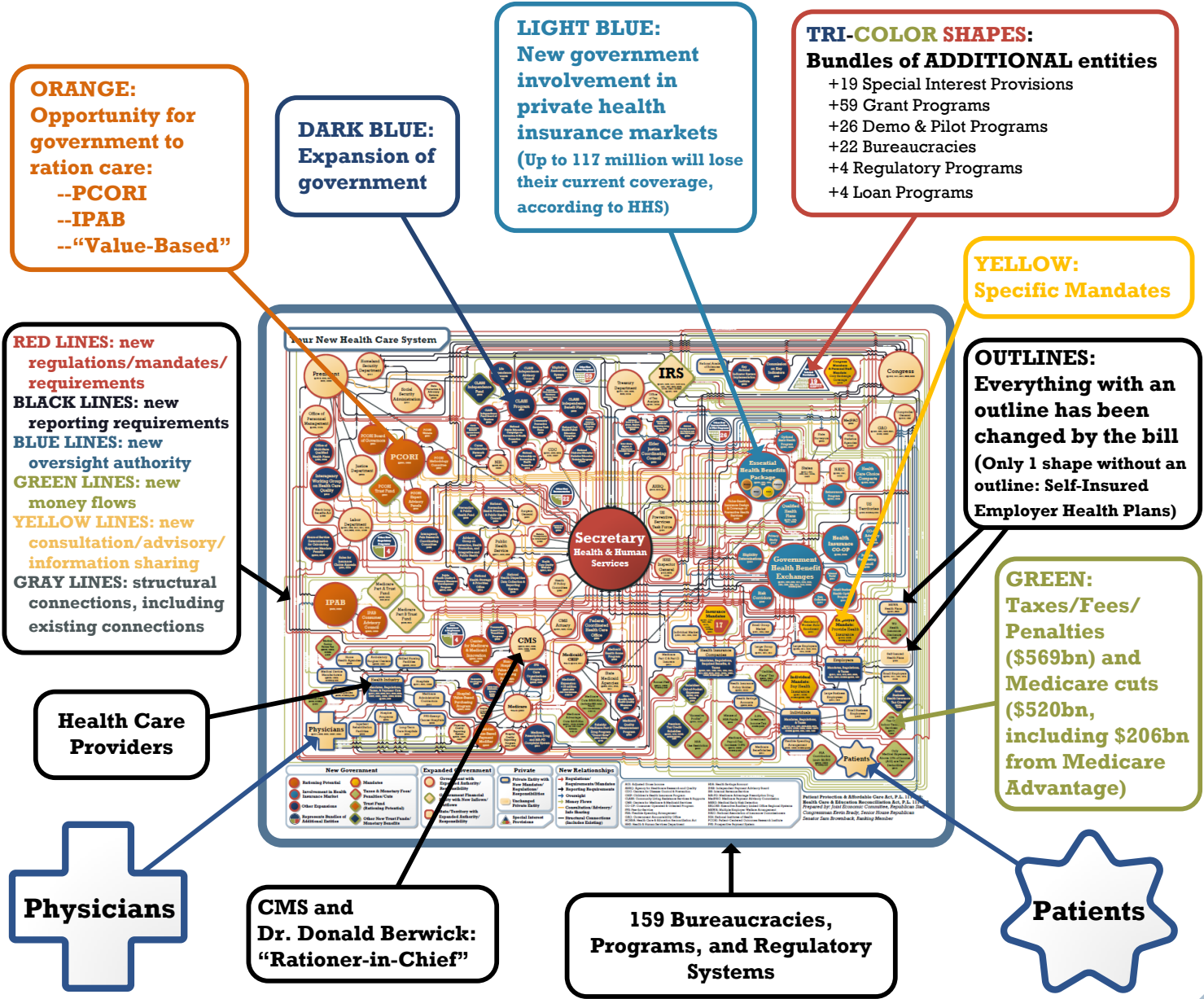
Patient Protection & Affordable Care Act, P.L. 111-148;
Health Care & Education Reconciliation Act, P.L. 111-152
 Prepared by: Joint Economic Committee, Republican Staff
 Congressman Kevin Brady, Senior House Republican
 Senator Sam Brownback, Ranking Member

Your New Health Care System

CHART MAP

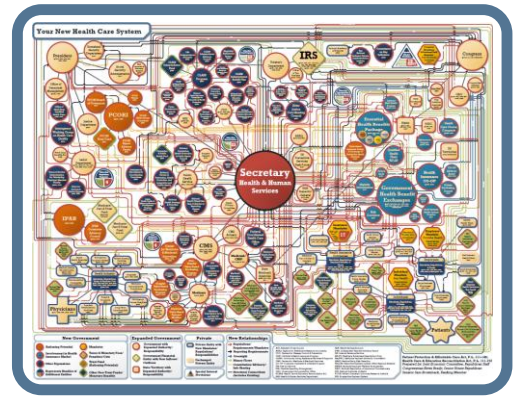
Patient Protection & Affordable Care Act, P.L. 111-148;
Health Care & Education Reconciliation Act, P.L. 111-152

- **Government take-over of 1/6th of the U.S. Economy**
- **Everything in COLOR is newly added by the bill**
 - Except for the HHS Secretary, who has been given new sweeping powers over health care
- **Chart only shows 1/3rd of all the new and expanded bureaucracies, regulations, and programs**
- **The new law will cost \$2.6 trillion in the first 10 years of full implementation**



Your New Health Care System

SUMMARY EXPLANATION



GENERAL

Everything in **COLOR** is newly added by the bill, except for the HHS Secretary, who has been given new sweeping powers over health care

Everything in **WHITE** (cream) existed previously

Everything in **WHITE with an OUTLINE** has been expanded or changed

- **RED OUTLINES** on white shapes are expanded government
- **GREEN OUTLINES** on white shapes are financial government entities
- **BLUE OUTLINES** on white shapes are changed private entities
- **NO OUTLINE** on a white shape is an unchanged entity (there is only one)

COLORED SHAPES: ALL NEW GOVERNMENT

ORANGE CIRCLES indicate new potential for the government to ration care

LIGHT BLUE CIRCLES are new government involvement in the health insurance market

GREEN DIAMONDS are taxes, fees, penalties, and cuts

YELLOW HEXAGONS are specific mandates

DARK BLUE CIRCLES are other expansions of government

DARK BLUE DIAMONDS are new government trust funds or monetary benefits, including subsidies and health insurance related tax credits

TRI-COLOR SHAPES (Dark Blue, Green, & Red) are bundles representing a number of additional entities

LINES: NEW RELATIONSHIPS

RED LINES are for new regulations, mandates, and requirements

BLACK LINES are for new reporting requirements

BLUE LINES are for new oversight authority

GREEN LINES are for new money flows

YELLOW LINES are for new consultation, advisory, and/or information sharing relationships

GRAY LINES indicate structural connections, including existing connections

CHART ADDENDUM

Bundle: Special Interest Provisions

1. § 1102 \$5 billion for labor union health plans.
2. § 1201 Exemption for AARP from ban on preexisting condition exclusions.
3. § 2006 \$300 million for the Louisiana Medicaid program.
4. § 3137 Special higher Medicare payments for Michigan and Connecticut.
5. § 3201 Special treatment for Florida Medicare Advantage Plans.
6. § 3301 Billions for brand-name drug companies under the Part D drug program.
7. § 6001 Special treatment for certain physician-owned hospitals.
8. § 9001 Special tax exemption for Longshoreman health plans.
9. § 9010 Special tax exemption for BCBS of Michigan, BCBS of Nebraska, & AARP.
10. § 9010 Special exemption for AARP, Mutual of Omaha, etc., medigap plans.
11. § 9014 Exemption for AARP from \$500k cap on insurance executives' compensation.
12. § 9023 \$1 billion for New Jersey based pharmaceutical companies.
13. § 10201 Extra Medicaid DSH funds for Hawaii hospitals.
14. § 10201 \$1.1 billion for the Vermont and Massachusetts Medicaid programs.
15. § 10323 Special Medicare eligibility for coal miners in Libby, Montana.
16. § 10324 Higher Medicare reimbursements for "frontier states" (e.g., MT, ND).
17. § 10502 \$100 million for the Univ. of Connecticut Health Center.
18. § 1103 Exemption for AARP from health insurer overhead spending cap. (HCERA)
19. § 1203 \$100 million for Tennessee hospitals. (HCERA)

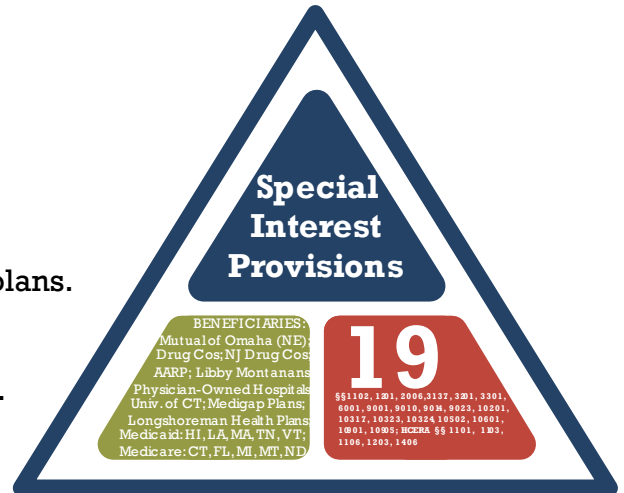


CHART ADDENDUM

Bundle: Insurance Mandates

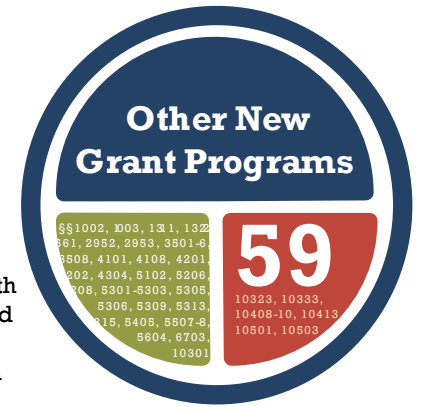


1. § 1001, Must cover adult dependent children §1251, to age 26 §2301(HCERA)
2. § 1001 Must provide unlimited lifetime and annual payouts
3. § 1001 Must provide access to preventive benefits, as prescribed by HHS Secretary, without cost-sharing
4. § 1001, Must provide uniform explanation of coverage documents with §10101 standardized definitions
5. § 1001, Must follow federal rules for enrollee claims appeals and provide §10101 notices in a “culturally and linguistically appropriate manner”
6. § 1001, Must provide unlimited beneficiary access to providers within network §10101
7. § 1001, Must provide unlimited beneficiary access to emergency rooms §10101 without additional cost-sharing
8. § 1001, Must provide unlimited beneficiary access to OB-GYNs without prior §10101 authorization
9. § 1001, Must not spend more than Government permits on administrative costs §10101
10. § 1001 Must not rescind coverage
11. § 1101 Must not exclude preexisting conditions
12. § 1201 Must not base premiums on health status of beneficiary
13. § 1201, Must not vary premiums based on age more than Government permits §10103
14. § 1201 Must cover all applicants regardless of health status
15. § 1201 Must renew coverage
16. § 1201 Must provide comprehensive coverage as defined by HHS Secretary
17. § 1201, Must provide access to all covered benefits no later than 90 days after §10103 enrollment

CHART ADDENDUM

Bundle: Grant Programs

1. § 1002	Grant program for consumer assistance offices	33. § 5313	Grant program to promote positive health behaviors and outcomes
2. § 1003	Grant program for states to monitor premium increases		
3. § 1311	Grant program to establish state Exchanges		
4. § 1311	Exchange grants to establish consumer navigator programs		
5. § 1322	Grant program for state cooperatives	34. § 5315	Public Health Sciences
6. § 1561	Grant program to implement health IT enrollment standards		Track for medical students
7. § 2952	Grant program for delivery of services to individuals with postpartum depression	35. § 5405	Primary Care Extension Program to educate providers
8. § 2953	State allotments for grants to promote personal responsibility education programs	36. § 5507	Grant program for demonstration projects to address health workforce shortage needs
9. § 3501	Grant program for technical assistance to providers implementing health quality practices	37. § 5507	Grant program for demonstration projects to develop training programs for home health aides
10. § 3502	Grant program to establish interdisciplinary health teams	38. § 5508	Grant program to establish primary care residency programs
11. § 3503	Grant program to implement medication therapy management	39. § 5508	Program of payments to teaching health centers that sponsor medical residency training
12. § 3504	Grant program to support emergency care pilot programs	40. § 5604	Grant program to establish demonstration projects for community-based mental health settings
13. § 3505	Grant program to promote universal access to trauma services	41. § 6703	Grant program to promote continuing education for long-term care staffers
14. § 3506	Grant program to develop and promote shared decision-making aids	42. § 6703	Grant program to improve management practices and training
15. § 3506	Grant program to support implementation of shared decision-making	43. § 6703	Grant program to subsidize costs of electronic health records
16. § 3508	Grant program to integrate quality improvement in clinical education	44. § 6703	Grant program to promote adult protective services
17. § 4101	Grant program to support school-based health centers	45. § 6703	Grant program to conduct elder abuse detection and prevention
18. § 4108	Grant program for States to prevent chronic disease in Medicaid beneficiaries	46. § 6703	Grant program to support long-term care ombudsmen
19. § 4201	Community transformation grants	47. § 6703	Grant program to fund State surveys of long-term care residences
20. § 4202	Grant program to provide public health interventions	48. § 10301	Value-based purchasing program for ambulatory surgical centers
21. § 4304	Grant program to increase epidemiology and laboratory capacity	49. § 10323	Grant program to screen at-risk individuals for environmental health conditions
22. § 5102	Grant program to plan health care workforce development activities	50. § 10333	Grant program to support community based collaborative care networks
23. § 5102	Grant program to implement health care workforce development activities	51. § 10408	Grant program to promote small business wellness programs
24. § 5206	Grant program for mid-career training for health professionals	52. § 10409	Grant program for Cures Acceleration Network
25. § 5208	Grant program to fund nurse-managed health clinics	53. § 10410	Grant program to promote centers of excellence for depression
26. § 5301	Grant program to support primary care training programs	54. § 10413	Grant program to provide assistance to provide information to young women with breast cancer
27. § 5302	Grant program to fund training for direct care workers	55. § 10501	Grant program to train nurse practitioners as primary care providers
28. § 5303	Grant program to develop dental training programs	56. § 10501	Grant program for community-based diabetes prevention
29. § 5305	Grant program to promote geriatric education centers	57. § 10501	Grant program for providers who treat a high percentage of medically underserved populations
30. § 5305	Grant program to promote health professionals entering geriatrics	58. § 10501	Grant program to recruit students to practice in underserved communities
31. § 5306	Grant program to promote training in mental and behavioral health	59. § 10503	Community Health Center Fund
32. § 5309	Grant program to promote nurse retention programs		



Your New Health Care System

CHART ADDENDUM

Bundle: Demonstration & Pilot Programs

1. § 1201 Demonstration program for state wellness programs
2. § 2704 Medicaid demonstration project to evaluate bundled payments
3. § 2705 Medicaid demonstration project for global payment system
4. § 2706 Medicaid demonstration project for accountable care organizations
5. § 2707 Medicaid demonstration project for emergency psychiatric care
6. § 3023 Medicare pilot program on payment bundling
7. § 3024 Independence at home medical practice demonstration program
8. § 3113 Demonstration project for payment of complex diagnostic laboratory tests
9. § 3140 Medicare hospice concurrent care demonstration project
10. § 4204 Demonstration program of grants to improve child immunization rates
11. § 4206 Pilot program for risk-factor assessments provided through community health centers
12. § 5304 Demonstration program to increase access to dental health care in underserved communities
13. § 5509 Graduate nurse education demonstration program
14. § 6112 National independent monitor pilot program for skilled nursing facilities and nursing facilities
15. § 6114 Demonstration projects for nursing facilities involved in the culture change movement
16. § 10212 Pregnancy Assistance Fund
17. § 10315 Demonstration project for payment adjustments to home health services
18. § 10323 Pilot program for care of individuals in environmental emergency declaration areas
19. § 10326 Pilot programs to implement value-based purchasing
20. § 10504 Demonstration project to provide access to health care for the uninsured at reduced fees
21. § 10607 Demonstration program to explore alternatives to tort litigation
22. § 10221 Indian Health demonstration program for chronic shortages of health professionals
23. § 10221 Indian Country modular component facilities demonstration program
24. § 10221 Indian mobile health stations demonstration program
25. § 10221 Indian youth telemental health demonstration project
26. § 10221 Indian youth life skills demonstration project



CHART ADDENDUM

Bundle: Bureaucracies



1. § 1412 Program for advance determination of tax credit eligibility
2. § 3509 Health and Human Services Coordinating Committee on Women's Health
3. § 3509 Centers for Disease Control Office of Women's Health
4. § 3509 Agency for Healthcare Research and Quality Office of Women's Health
5. § 3509 Health Resources and Services Administration Office of Women's Health
6. § 3509 Food and Drug Administration Office of Women's Health
7. § 5101 National Health Care Workforce Commission
8. § 10104 Advisory board for multi-state health plans
9. § 10334 Centers for Disease Control Office of Minority Health
10. § 10334 Health Resources and Services Administration Office of Minority Health
11. § 10334 Substance Abuse and Mental Health Services Administration Office of Minority Health
12. § 10334 Agency for Healthcare Research and Quality Office of Minority Health
13. § 10334 Food and Drug Administration Office of Minority Health
14. § 10334 Centers for Medicare and Medicaid Services Office of Minority Health
15. § 10413 Advisory committee for young women's breast health awareness education campaign
16. § 10501 Interagency Access to Health Care in Alaska Task Force
17. § 10221 Office of Indian Men's Health
18. § 10222 Office of Direct Service Tribes
19. § 10223 Indian Health Service mental health technician training program
20. § 10224 Indian Health Service program for treatment of child sexual abuse victims
21. § 10225 Indian Health Service program for treatment of domestic violence and sexual abuse
22. § 10226 Indian Health Service Director of HIV/AIDS Prevention and Treatment

CHART ADDENDUM

Bundle: Regulatory Programs



1. § 1104 Committee to review administrative simplification standards
2. § 6102 Quality assurance and performance improvement program for skilled nursing facilities
3. § 6103 Special focus facility program for skilled nursing facilities
4. § 6103 Special focus facility program for nursing facilities

CHART ADDENDUM

Bundle: Loan Repayment & Forgiveness Programs



1. § 5203 Pediatric specialty loan repayment program
2. § 5204 Public Health Workforce Loan Repayment Program
3. § 5205 Allied Health Loan Forgiveness Program
4. § 5311 Student loan forgiveness for nursing school faculty