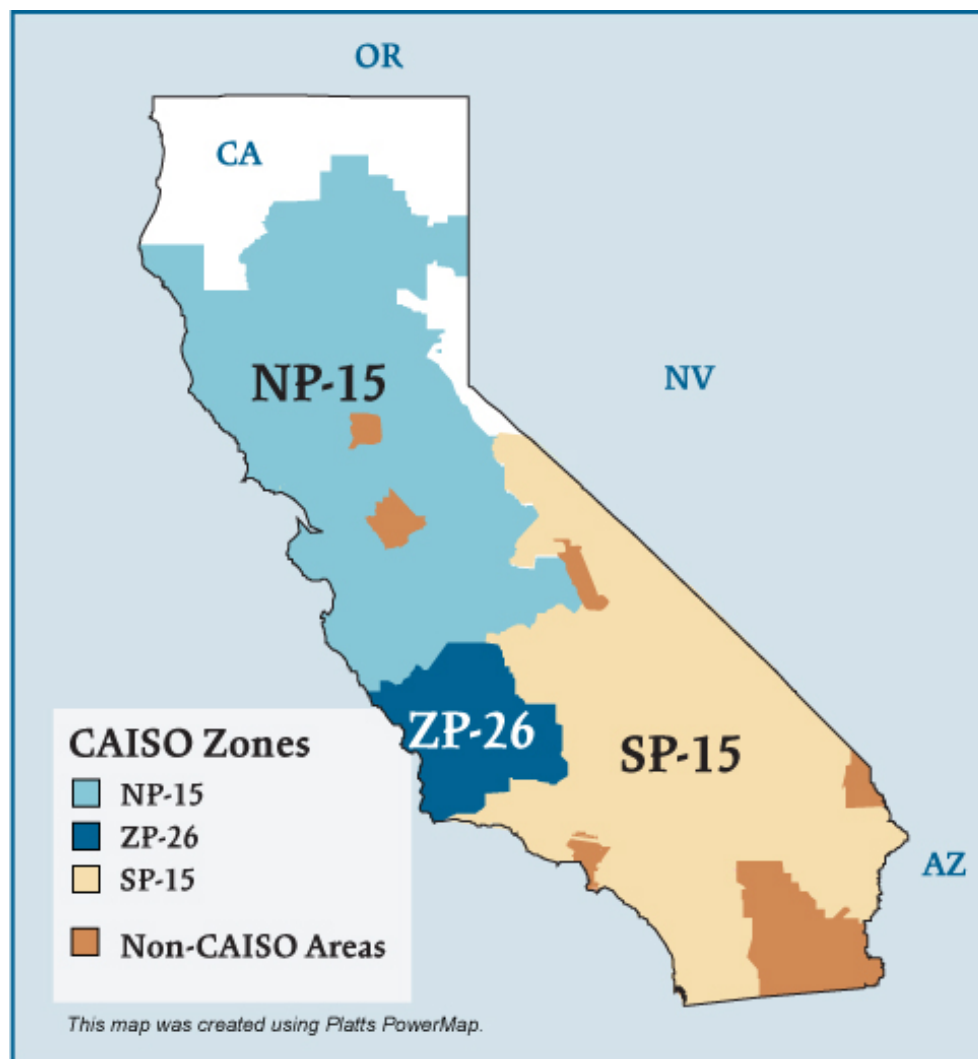


California Electric Regions



Overview

Geography

States covered: California (most of) and northern Baja California (Mexico)

Reliability region: California-Mexico Power Area (CAMX) sub-region of the Western Electric Coordinating Council (WECC)

Balancing authorities: California ISO (CAISO), Sacramento Municipal Utility District (SMUD), Turlock Irrigation District (TID), Los Angeles Department of Water and Power (LADWP), and Comision Federal de Electricidad (CFE).

Approximately 80% of demand in the CAMX subregion is within the area of the CAISO balancing authority. The portion of the CAMX area within Mexico is comparatively small. The remaining 20% of California's load is managed primarily by municipal utilities and irrigation districts such as the Los Angeles Department of Water and Power, the Sacramento Municipal Utility District, and the Imperial Irrigation District.

CAISO zones: NP-15, ZP-26, SP-15

RTO/ISO

California ISO (CAISO) (established 1998) operates the region's power grid and wholesale electric markets:

- Real-time imbalance energy,
- Ancillary services, and
- Transmission usage.

[CAISO 2008 State of the Markets Report](#)

Market Monitor: Keith Casey – Director, Department of Market Monitoring

Generation/Supply

Marginal fuel type: natural gas

Generating capacity (summer 2006): 56,347 MW

Capacity reserve (summer 2006): 6,077 MW

Reserve margin (summer 2006): 12%

Demand

All time peak demand: 50,270 MW (set July 24, 2006)

System peak loads declined in 2008, due in large part to a generally mild summer

.

Peak demand change: -3.5% (2007-2008)

	2004	2005	2006	2007	2008
Summer Peak Demand (MW)	45,597	45,562	50,270	48,615	46,897

Source: Derived from CAISO data.

Load pockets: Humbolt, North Bay, Greater San Francisco Bay, Sierra, Stockton, Los Angeles Basin, and San Diego areas.

Prices (CAISO only)

Annual Average Price (ISO Real-time)

NP-15:

2004: \$38.35/MWh

2005: \$54.39/MWh

2006: \$43.17/MWh

2007: \$54.44/MWh

SP-15:

2004: \$39.47/MWh

2005: \$55.57/MWh

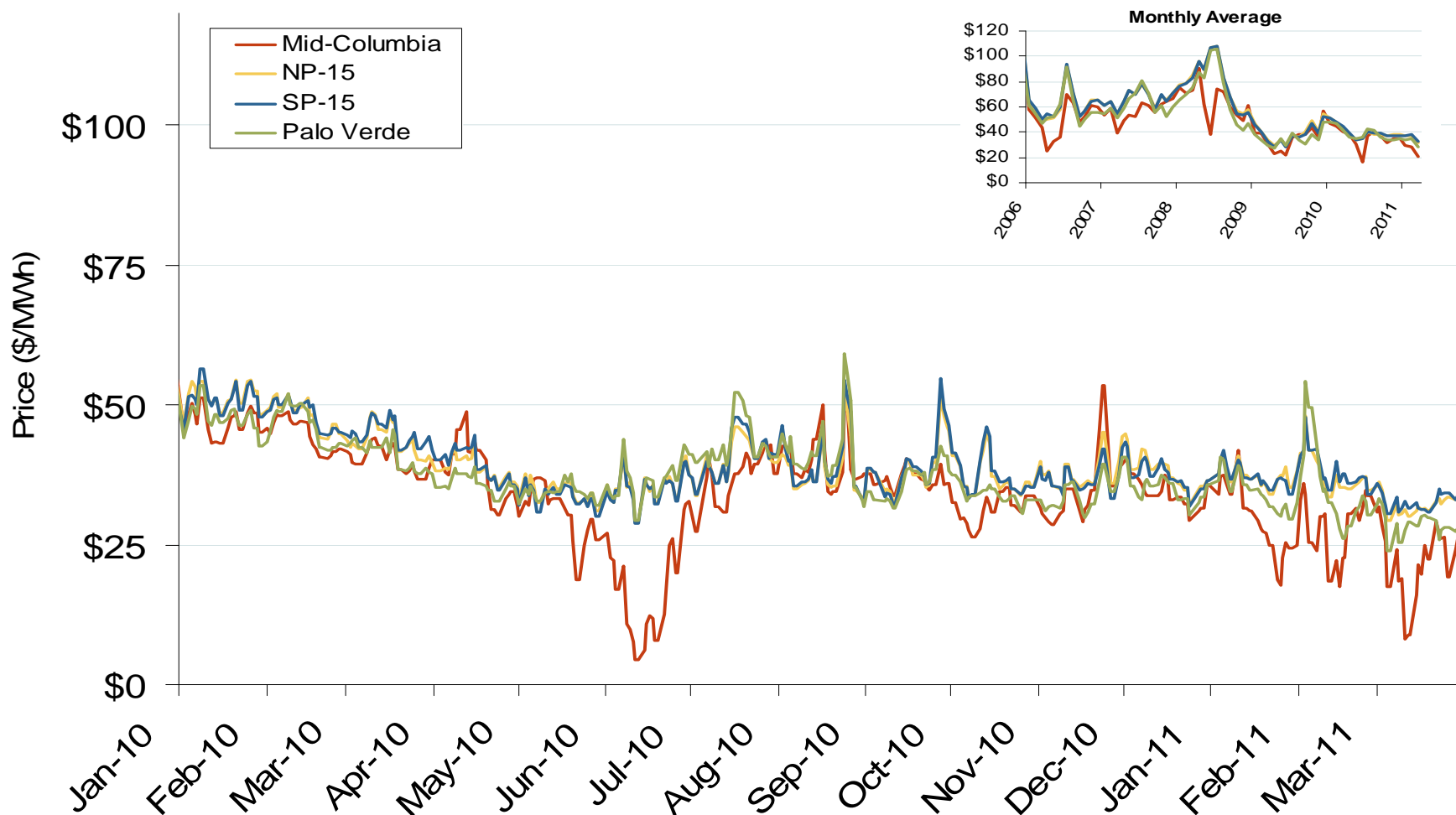
2006: \$46.50/MWh

2007: \$54.45/MWh

Interconnections/Seams

Load serving entities within CAISO rely on imports for approximately one-fourth of their annual energy needs.

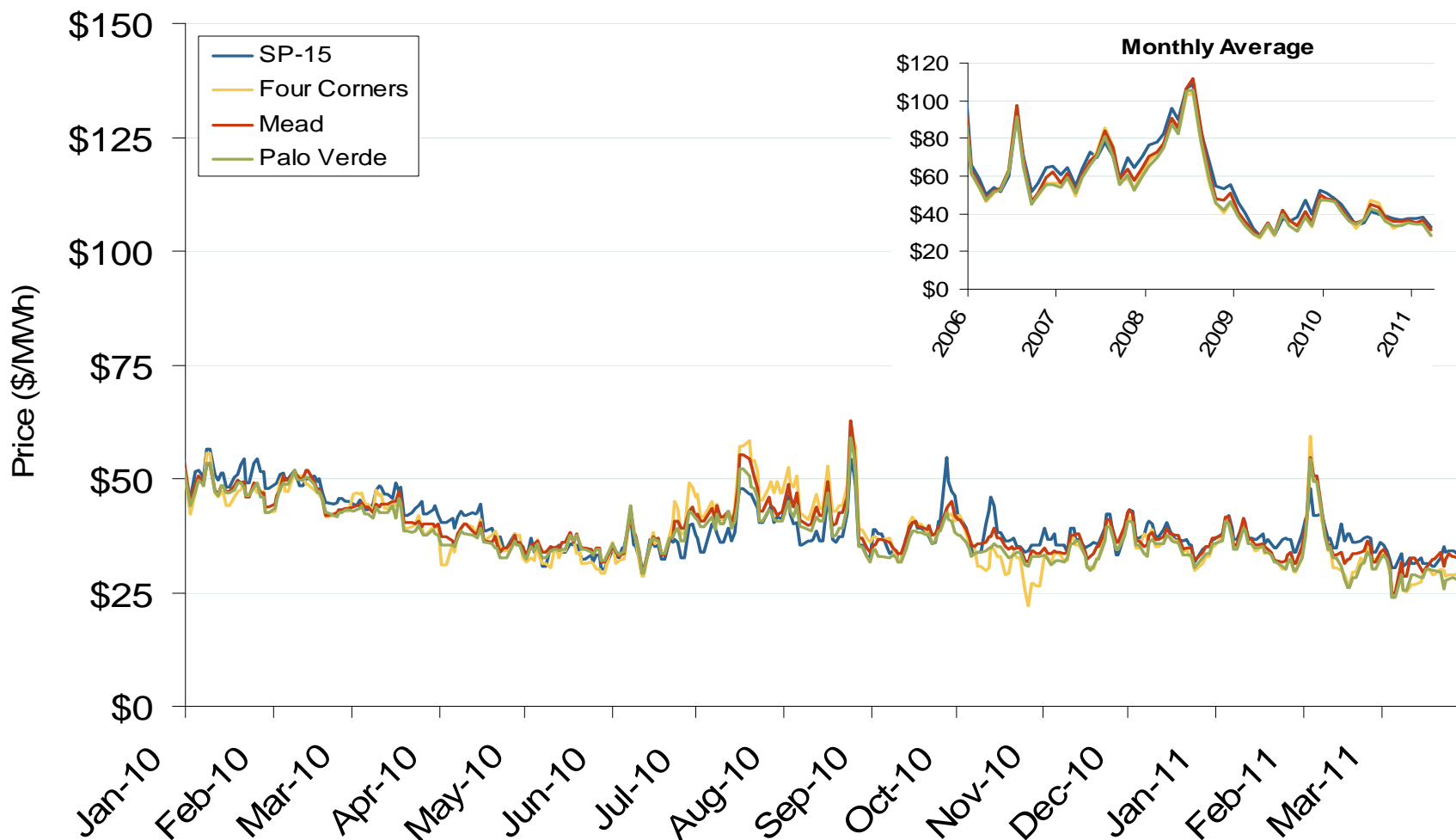
Western Daily Bilateral Day-Ahead On-Peak Prices



Source: Derived from *Platts* data.

Updated April 8, 2011

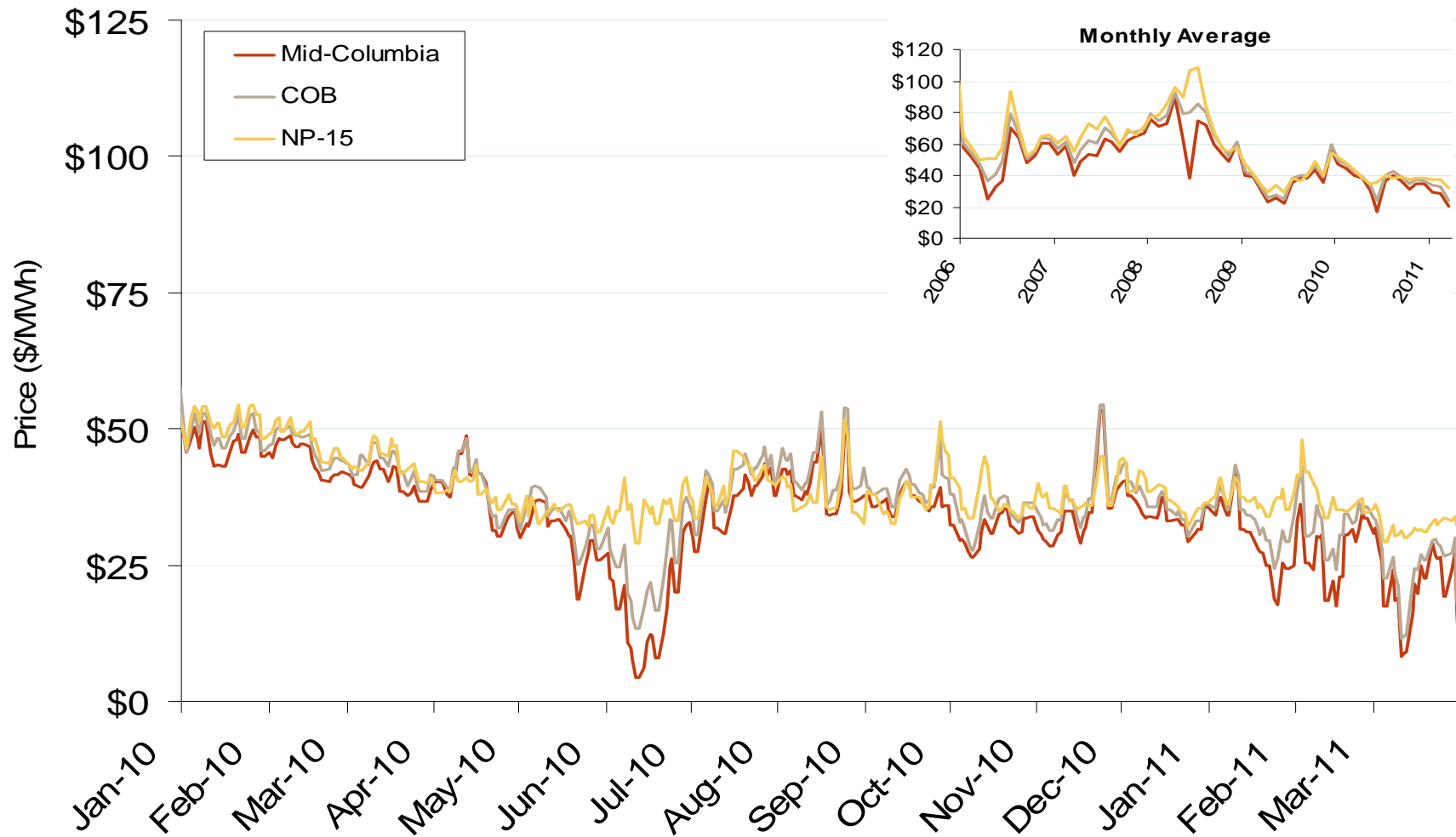
Southwestern Daily Bilateral Day-Ahead On-Peak Prices



Source: Derived from *Platts* data.

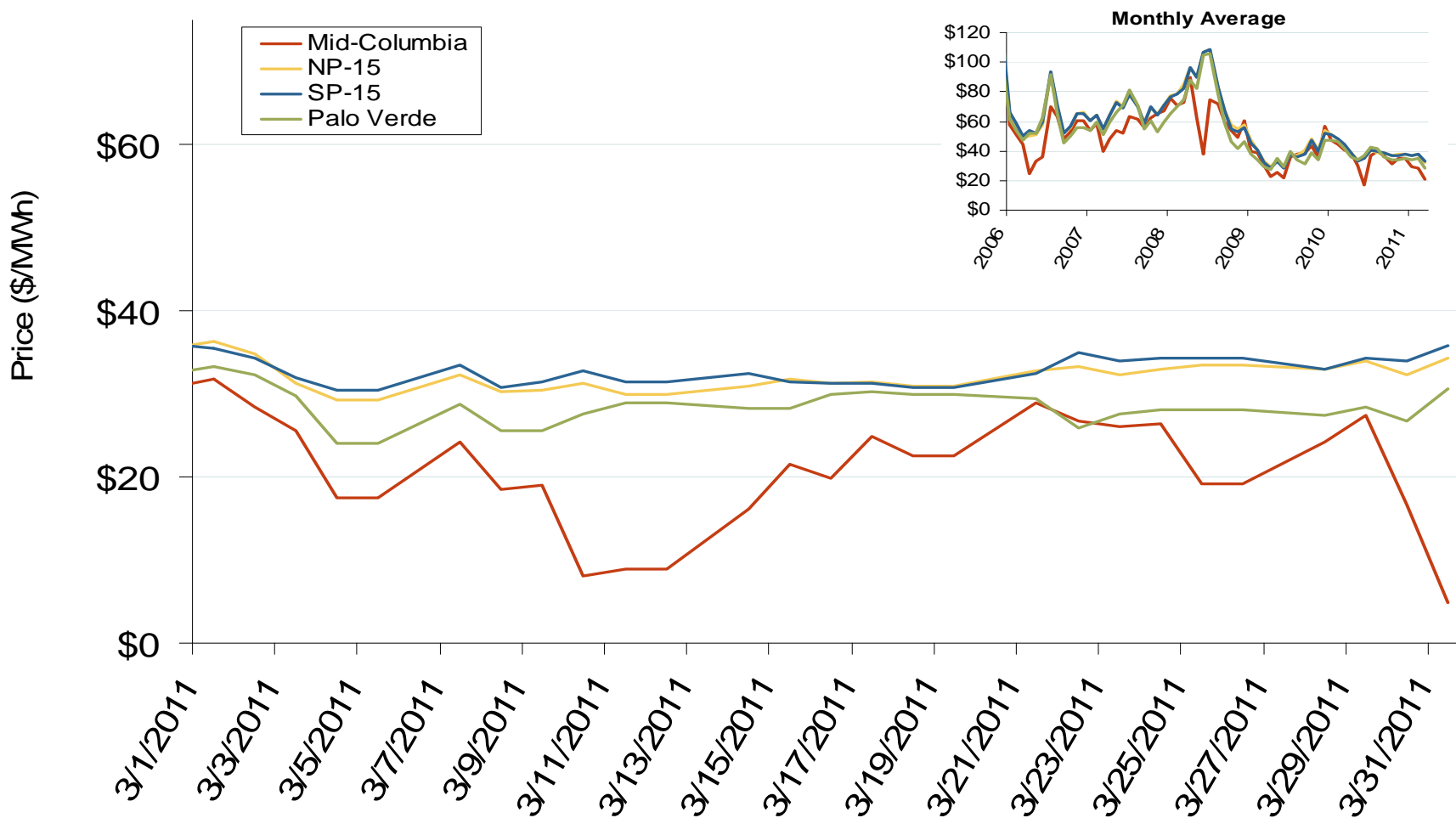
Updated April 8, 2011

Northwestern Daily Bilateral Day-Ahead On-Peak Prices



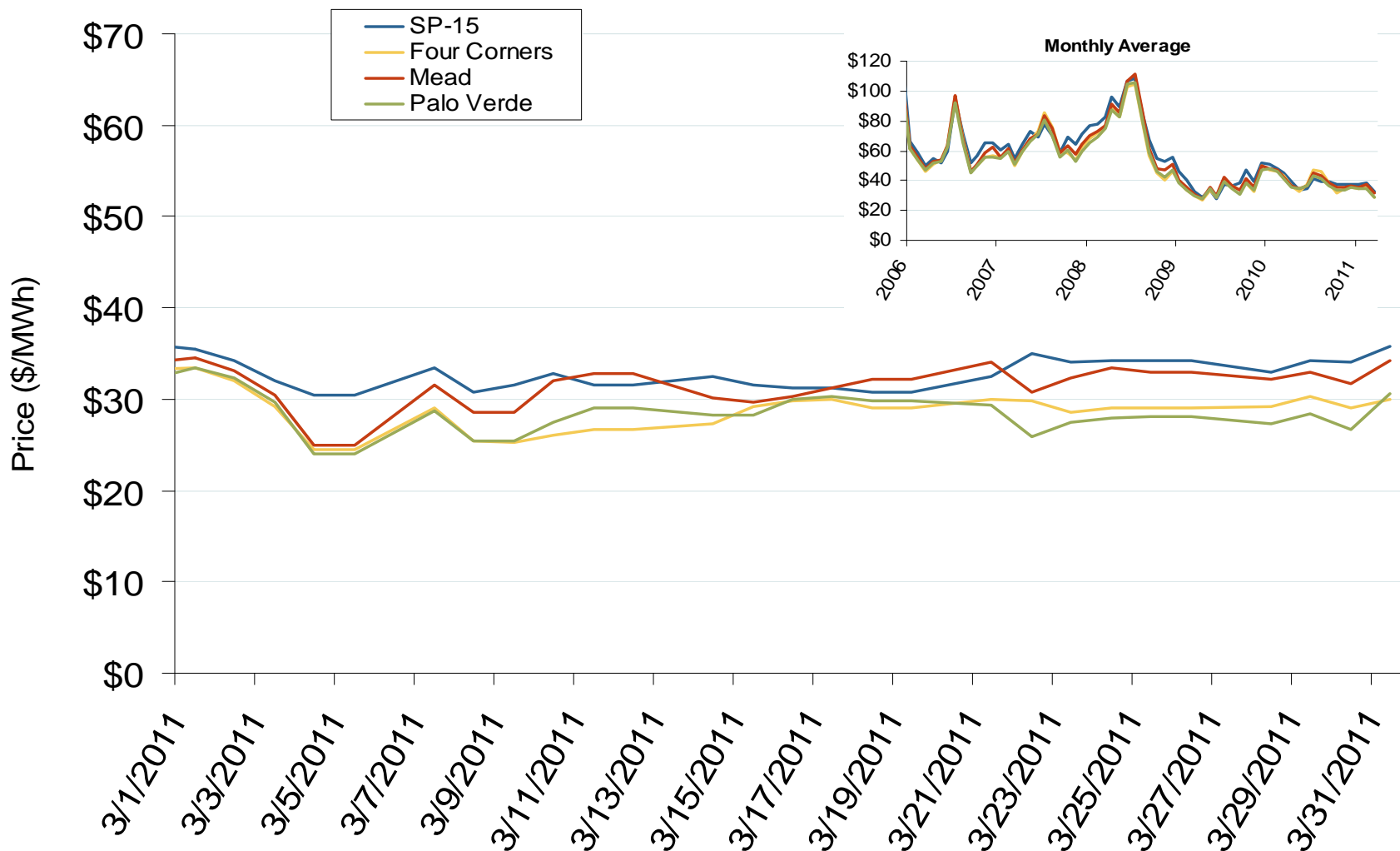
Source: Derived from *Platts* data.

Western Daily Bilateral Day-Ahead On-Peak Prices



Source: Derived from *Platts* data.

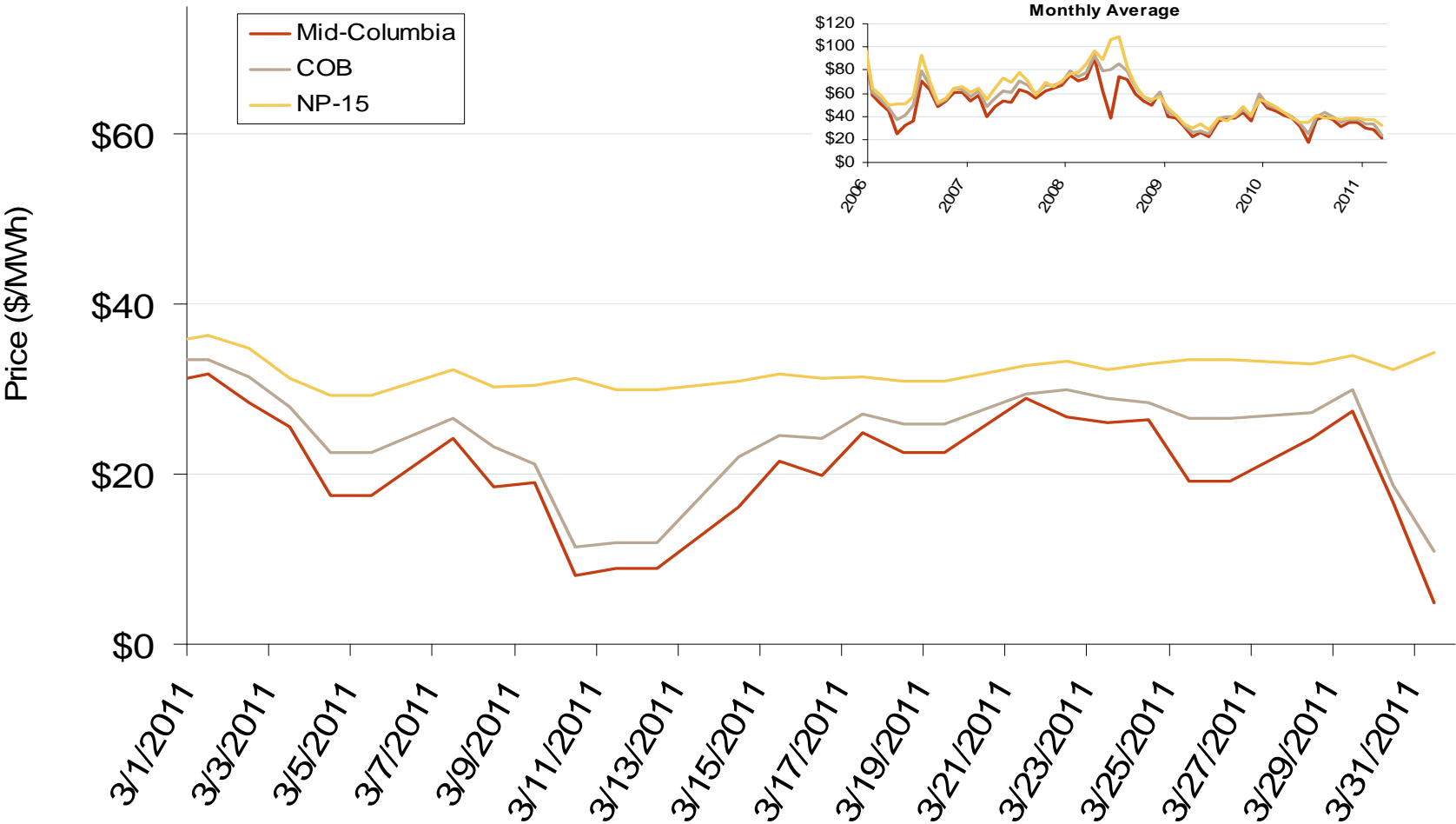
Southwestern Daily Bilateral Day-Ahead On-Peak Prices



Source: Derived from *Platts* data.

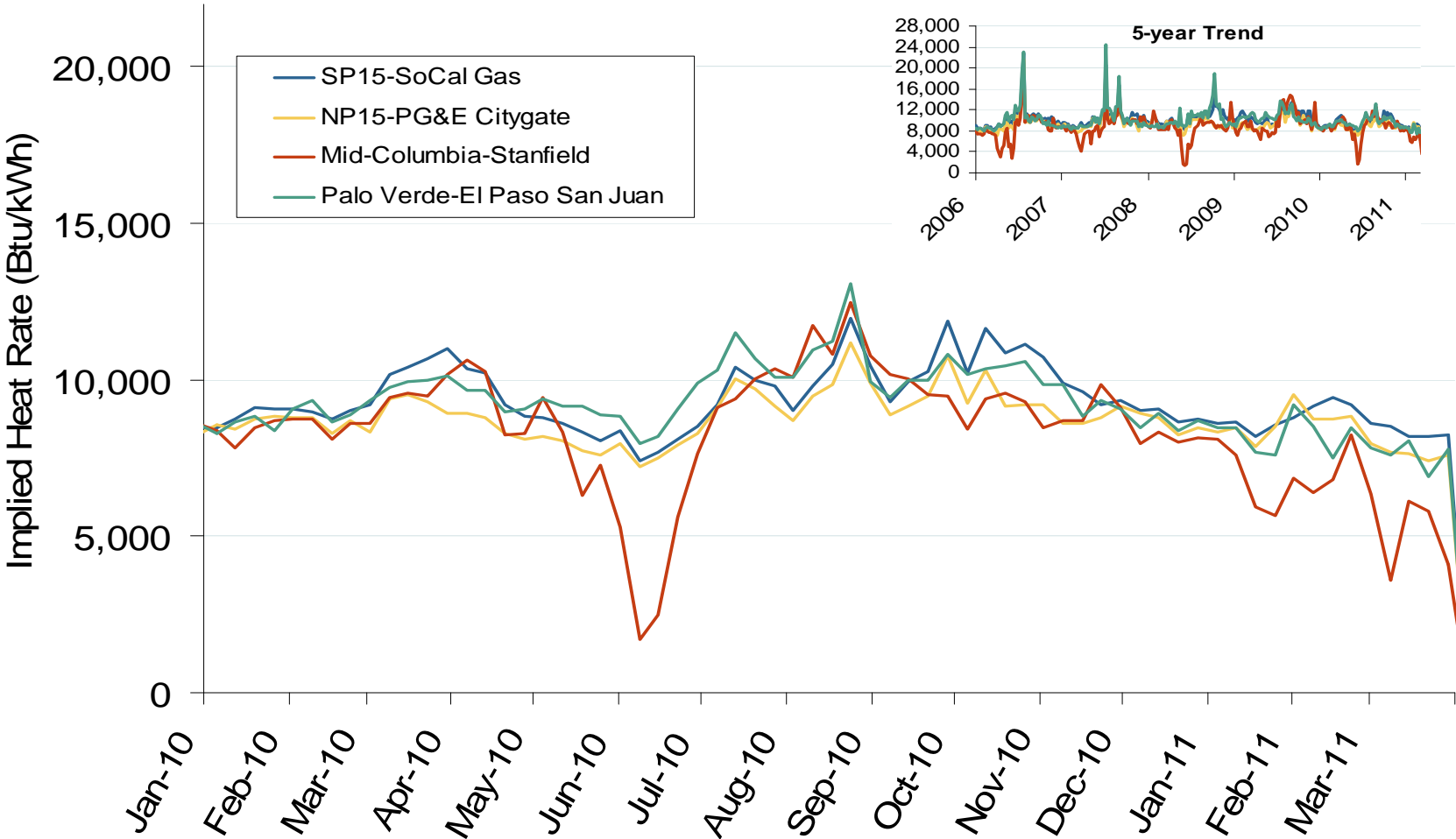
Updated April 8, 2011

Northwestern Daily Bilateral Day-Ahead On-Peak Prices



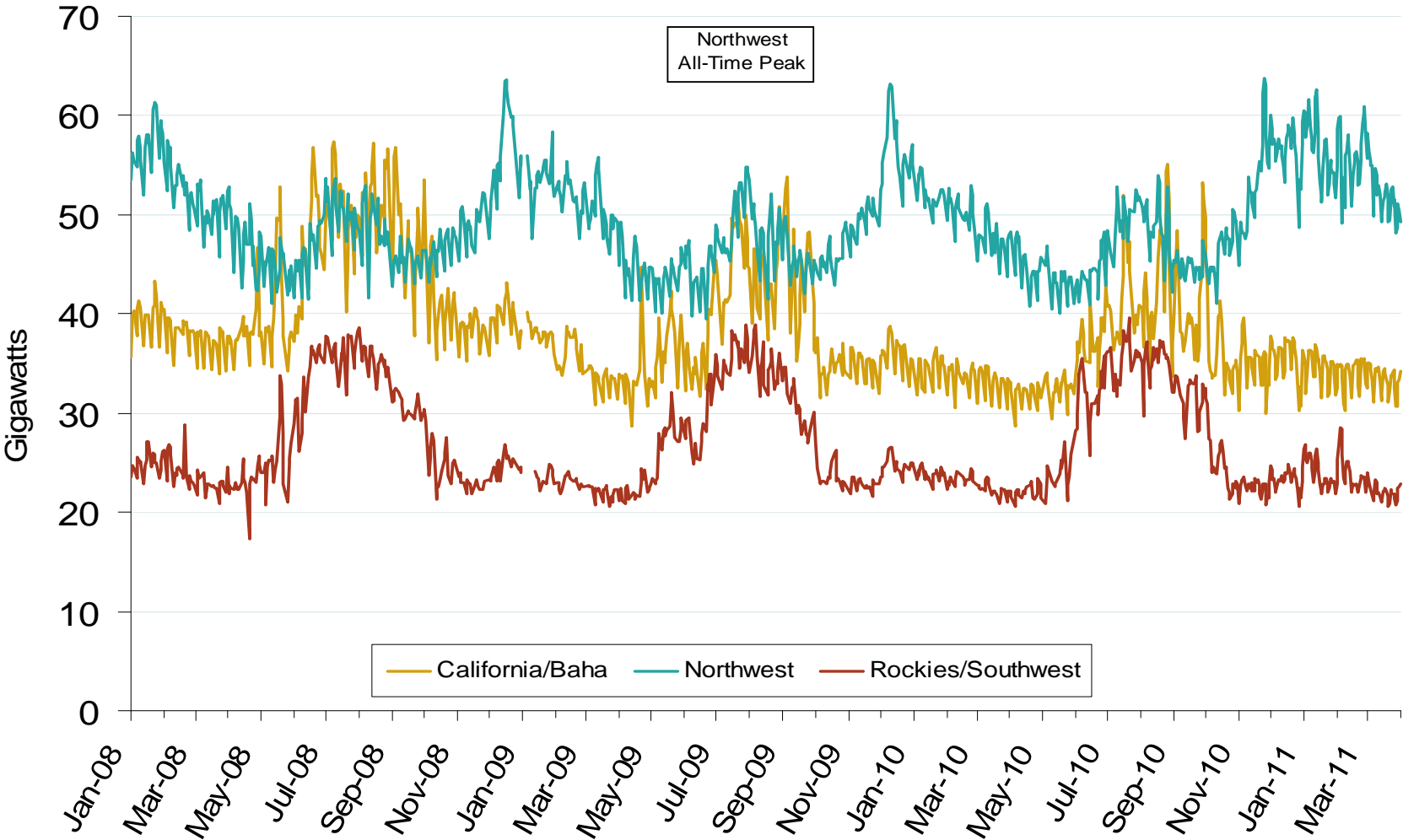
Source: Derived from Platts data.

Implied Heat Rates at Western Trading Points Weekly Averages



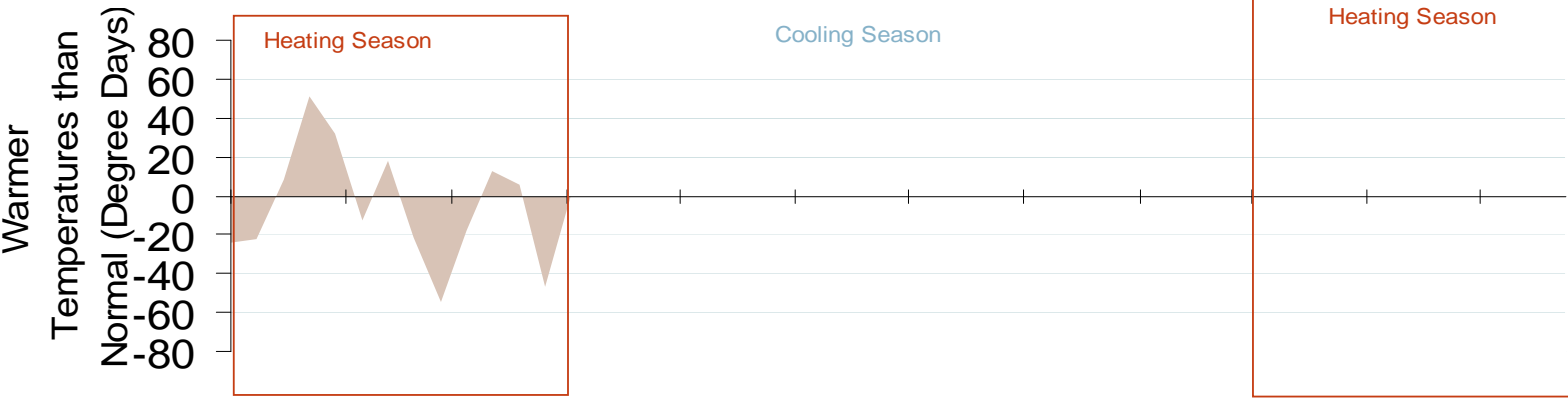
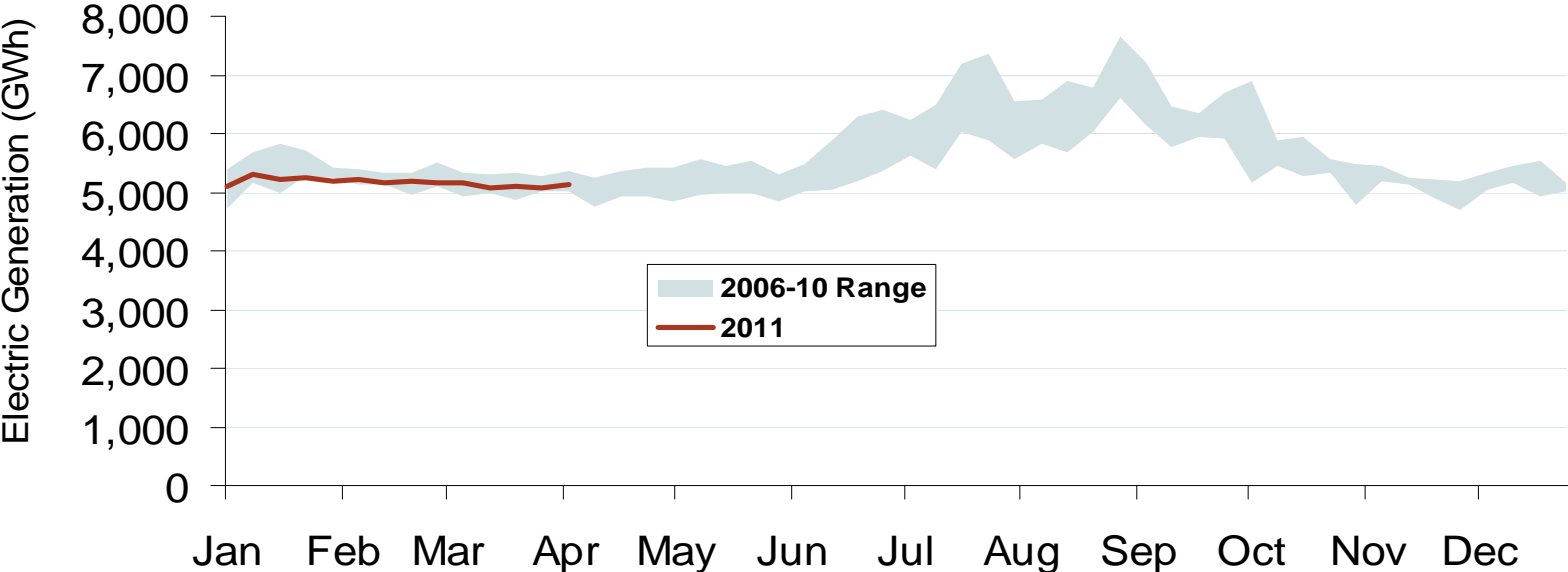
Source: Derived from *Platts* on-peak electric and natural gas price data.

Western Daily Actual Peak Demand



Source: Derived from WECC Daily Report data available at <http://wecc.biz>. Data does not include weekends and holidays. Some data for 12/31/2008 – 1/9/2009 are not available from WECC.

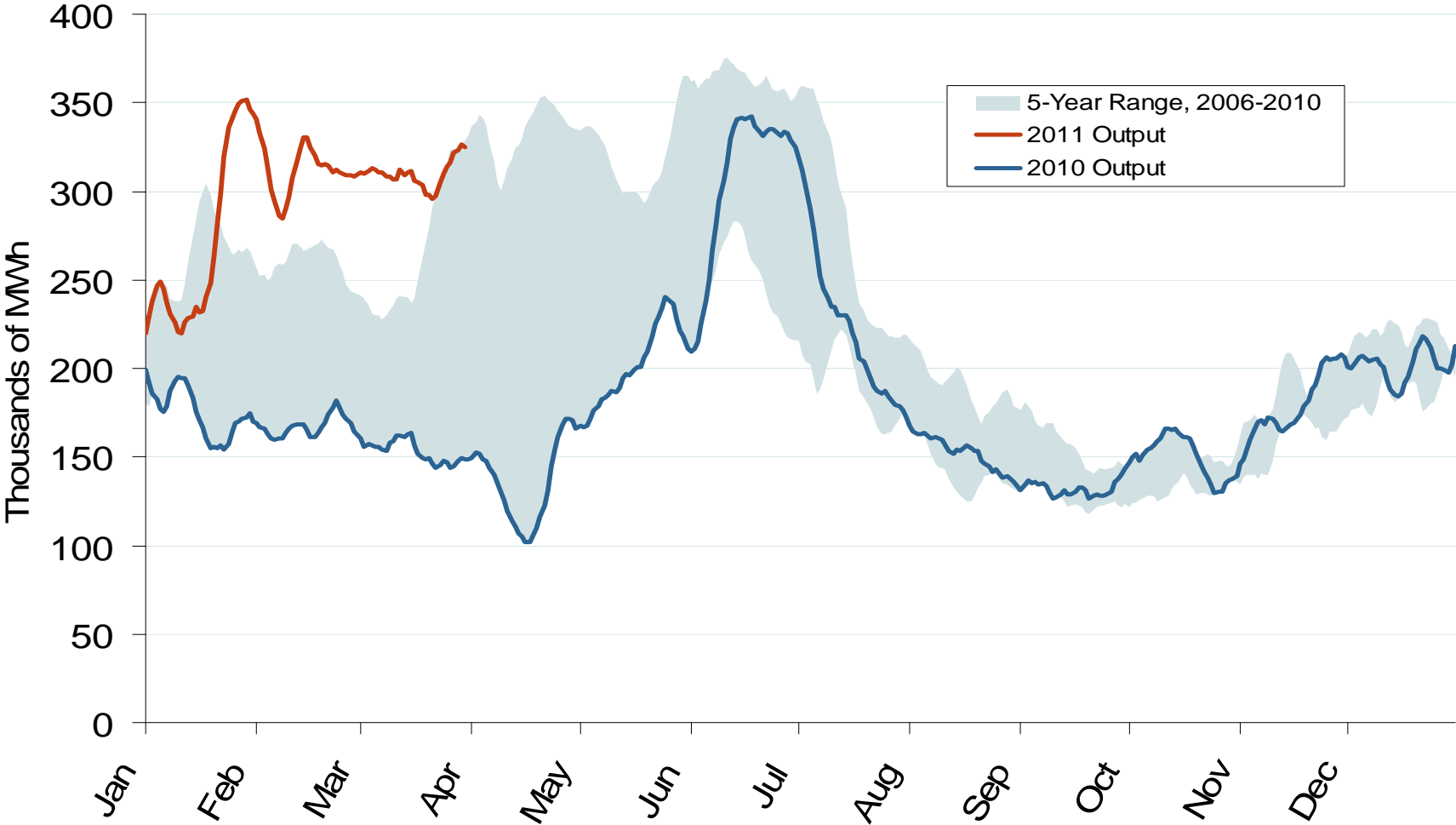
Weekly Electric Generation Output and Temperatures California



Source: Derived from *EEI* and *NOAA* data.
April 2011

Updated April 8, 2011

Pacific Northwest Hydroelectric Production



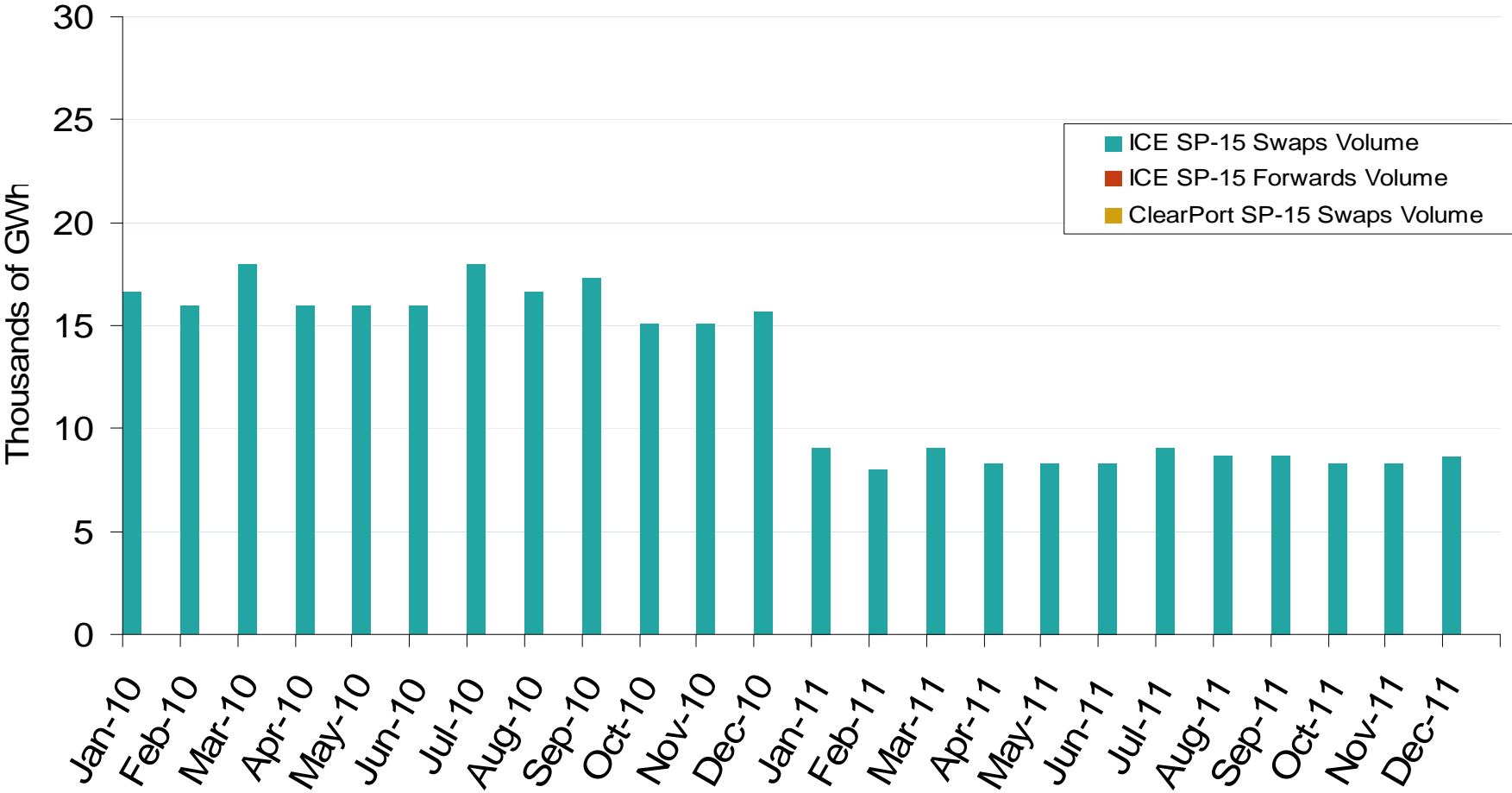
Source: Derived from USACE data reflecting the output of the 24 largest facilities.

Note: Trend lines are 7-day moving averages.

April 2011

Updated April 8, 2011

SP-15 Forward and Swap Volumes



Source: Derived from ICE and Nymex ClearPort data.

Note: ICE on-peak forward (physical) and swap (financial) volumes are for SP-15 and include monthly, dual monthly, quarterly, and calendar year contracts traded for each month. Nymex ClearPort on-peak swap (financial) volumes are for the SP-15 Hub traded by month.

Updated April 8, 2011